

# V&V Reference Report

## L2 ASCDS Version : 8.4.4

Observation 8924 - L2 Version 2  
Chandra X-Ray Center

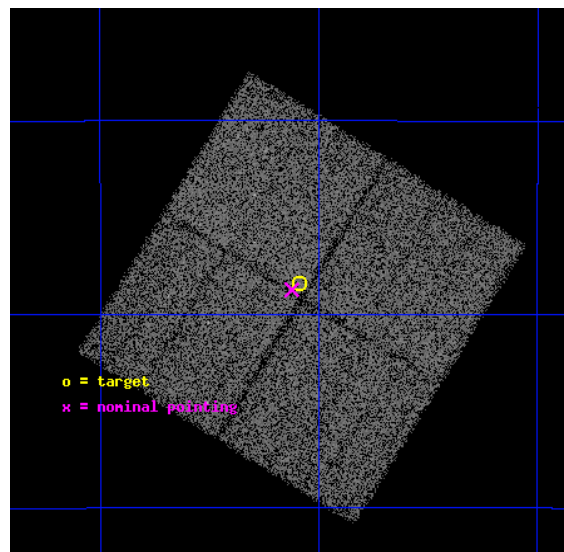
L2 Processing Date : May 16 2012

## Contents

<b>1</b>	<b>Front</b>	<b>2</b>
<b>2</b>	<b>OBI</b>	<b>3</b>
2.1	OBI . . . . .	3
2.1.1	Images . . . . .	3
2.1.2	Bias . . . . .	3
2.1.3	Parameters . . . . .	4
2.1.4	Events . . . . .	4
2.2	Compared Parameters . . . . .	5
2.3	Aspect . . . . .	6
2.4	Star Slots . . . . .	9
2.4.1	Slot 3 . . . . .	9
2.4.2	Slot 4 . . . . .	10
2.4.3	Slot 5 . . . . .	11
2.4.4	Slot 6 . . . . .	12
2.4.5	Slot 7 . . . . .	13
2.5	FID Slots . . . . .	14
2.5.1	Slot 0 . . . . .	14
2.5.2	Slot 1 . . . . .	15
2.5.3	Slot 2 . . . . .	16
<b>A</b>	<b>Summary</b>	<b>17</b>
A.1	Status . . . . .	17
A.2	Comments . . . . .	17

# 1 Front

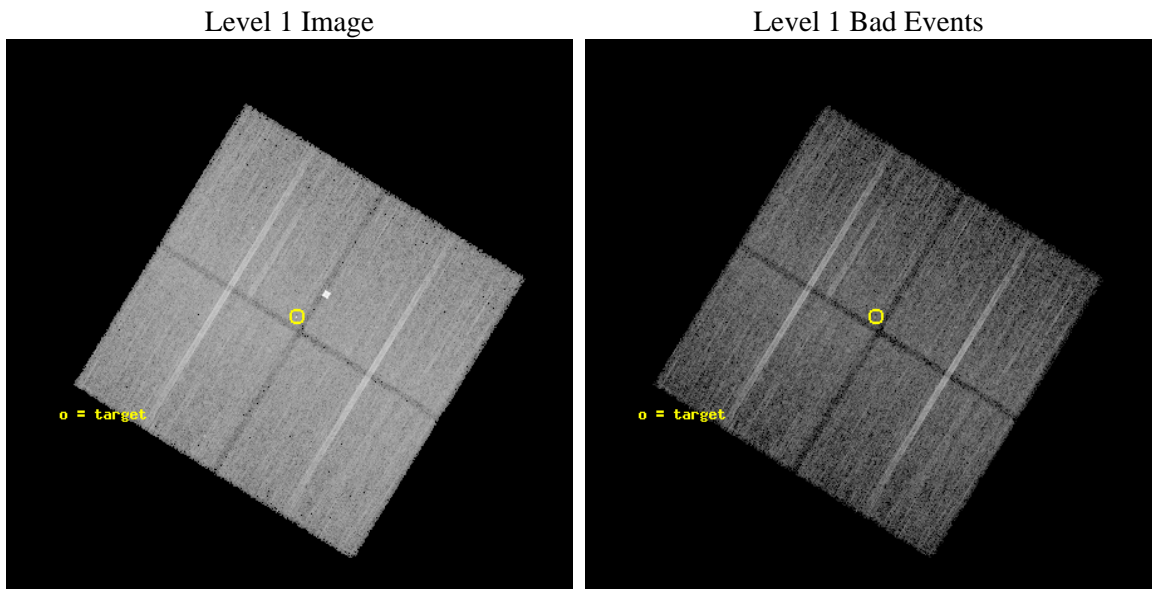
seq_num	200505	Sequence number
obs_id	8924	Observation id
title	ToO Studies with CXO of Pre-Main Sequence Stars Undergoing Optical Outbursts	Proposal title
observer	Professor David Weintraub	Principal investigator
object	EX Lupi	Source name
dtcycle	0	&#160
cycle	P	events from which exps? Prim/Second/Both
ra_targ	240.772917	Observer's specified target RA [deg]
dec_targ	-40.307	Observer's specified target Dec [deg]
ra_nom	240.78096354748	Nominal RA [deg]
dec_nom	-40.312296754975	Nominal Dec [deg]
roll_nom	301.76501944713	Nominal Roll [deg]
revision	2	Processing version of data
ontime	20108.729514837	Sum of GTIs [s]
livetime	19845.994159895	Livetime [s]
ontime0	20105.465414464	Sum of GTIs [s]
ontime1	20108.647434831	Sum of GTIs [s]
ontime2	20108.688474834	Sum of GTIs [s]
ontime3	20108.729514837	Sum of GTIs [s]
l2events	81978	Number of level 2 events



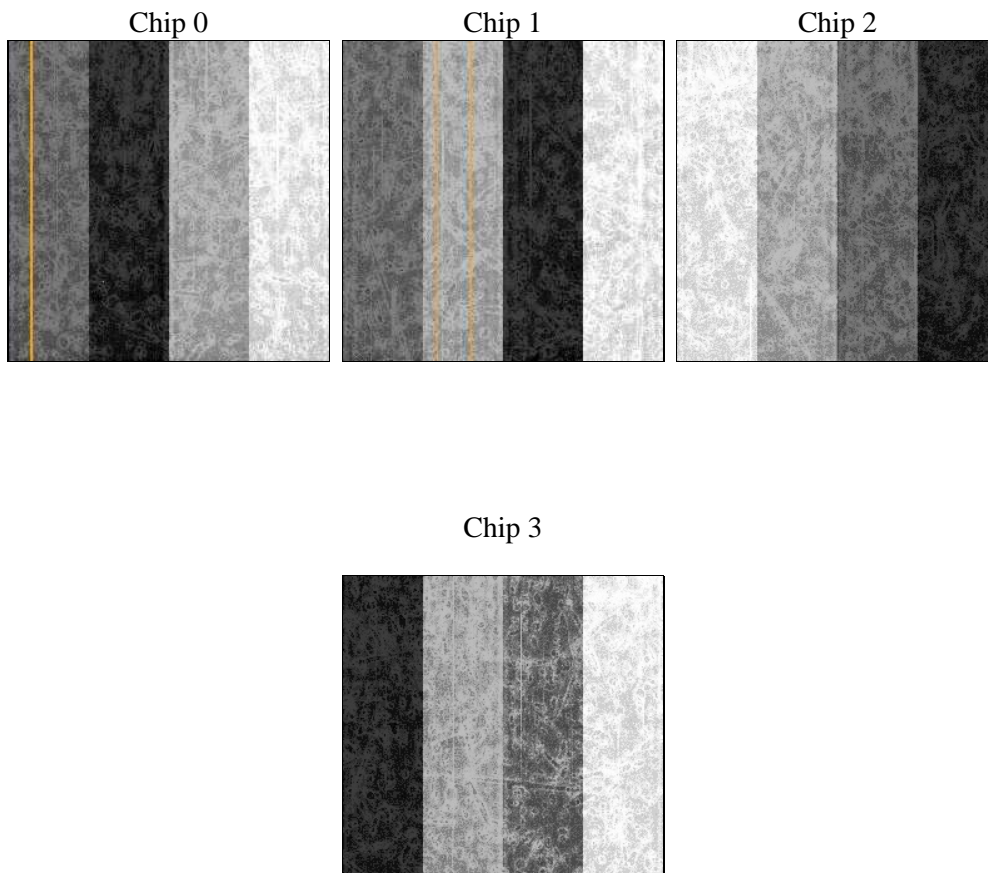
## 2 OBI

### 2.1 OBI

#### 2.1.1 Images



#### 2.1.2 Bias



### 2.1.3 Parameters

obi_num	0	Obi number	sched_exp_time	20000.000000	[s] Scheduled observation exposure time
ascdsver	8.4.4	Processing system revision	ontime	20108.729514837	Sum of GTIs [s]
caldsver	4.4.9	&#160	ontime0	20105.465414464	Sum of GTIs [s]
date	2012-05-16T14:53:30	Date and time of file creation	ontime1	20108.647434831	Sum of GTIs [s]
revision	2	Processing version of data	ontime2	20108.688474834	Sum of GTIs [s]
			ontime3	20108.729514837	Sum of GTIs [s]
			l1events	728167	Number of level 1 events

### 2.1.4 Events

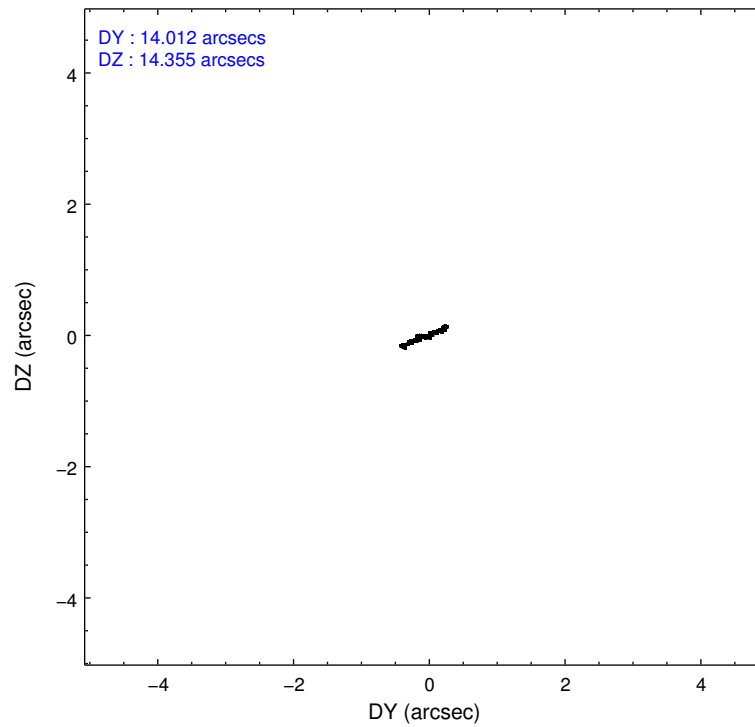
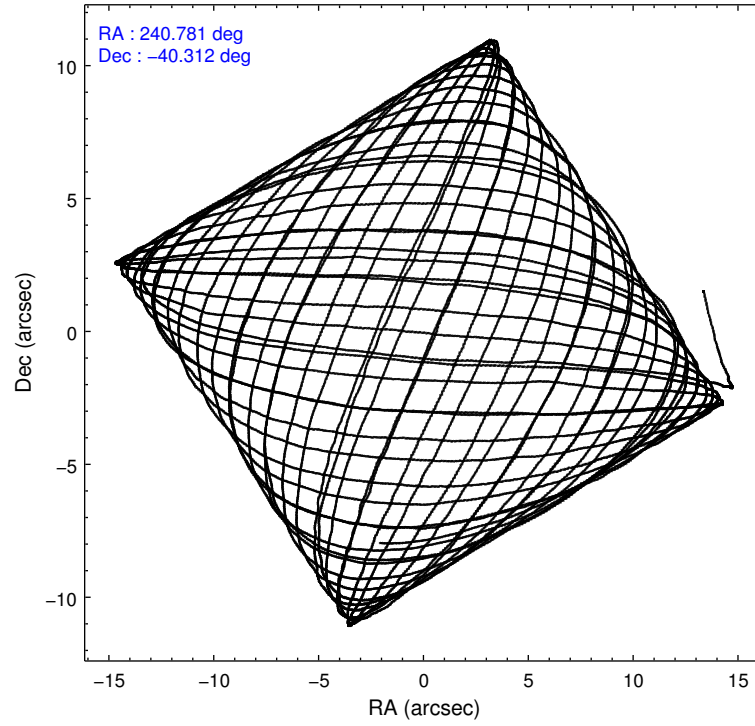
	ccd 0	ccd 1	ccd 2	ccd 3
level 1 events	172376	180872	189442	185477
rejected events	148488	150393	166145	161666
rejected %	86%	83%	87%	87%

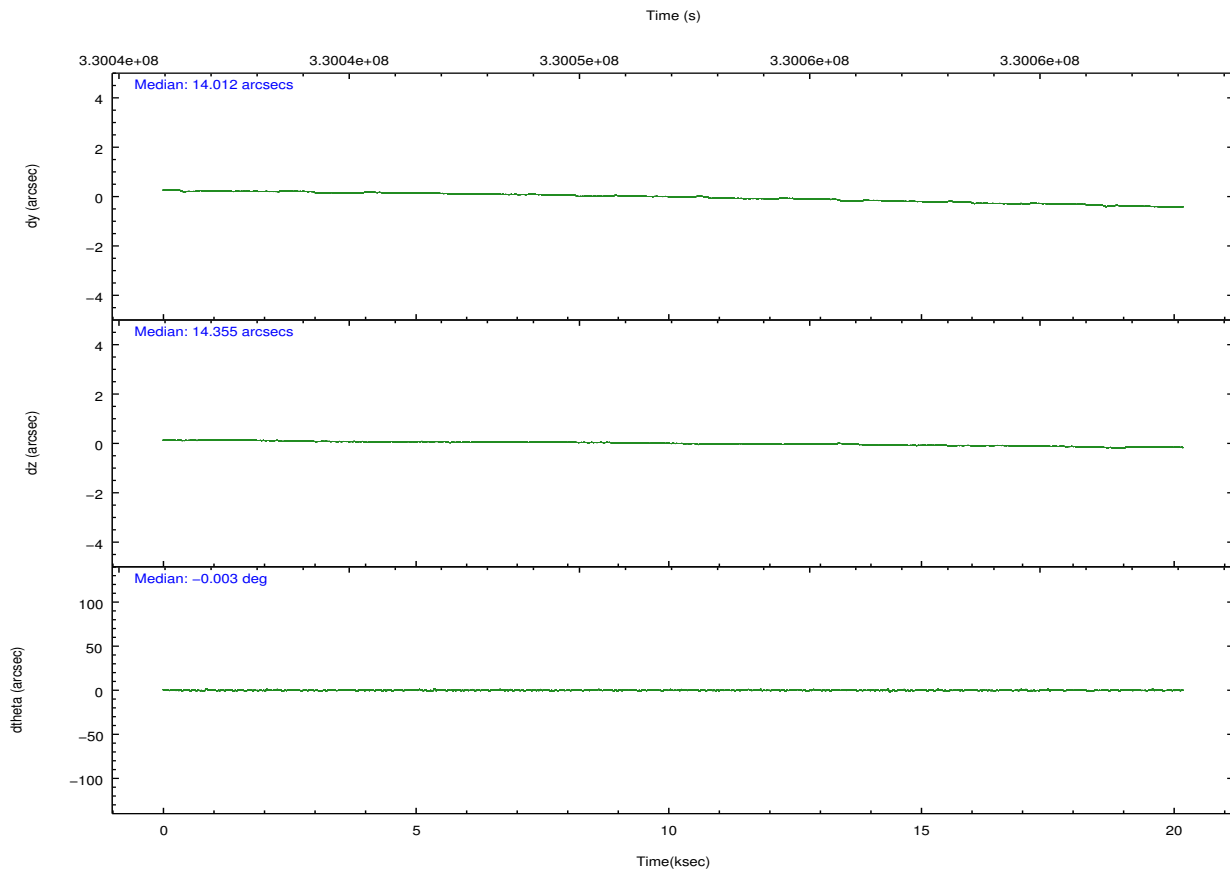
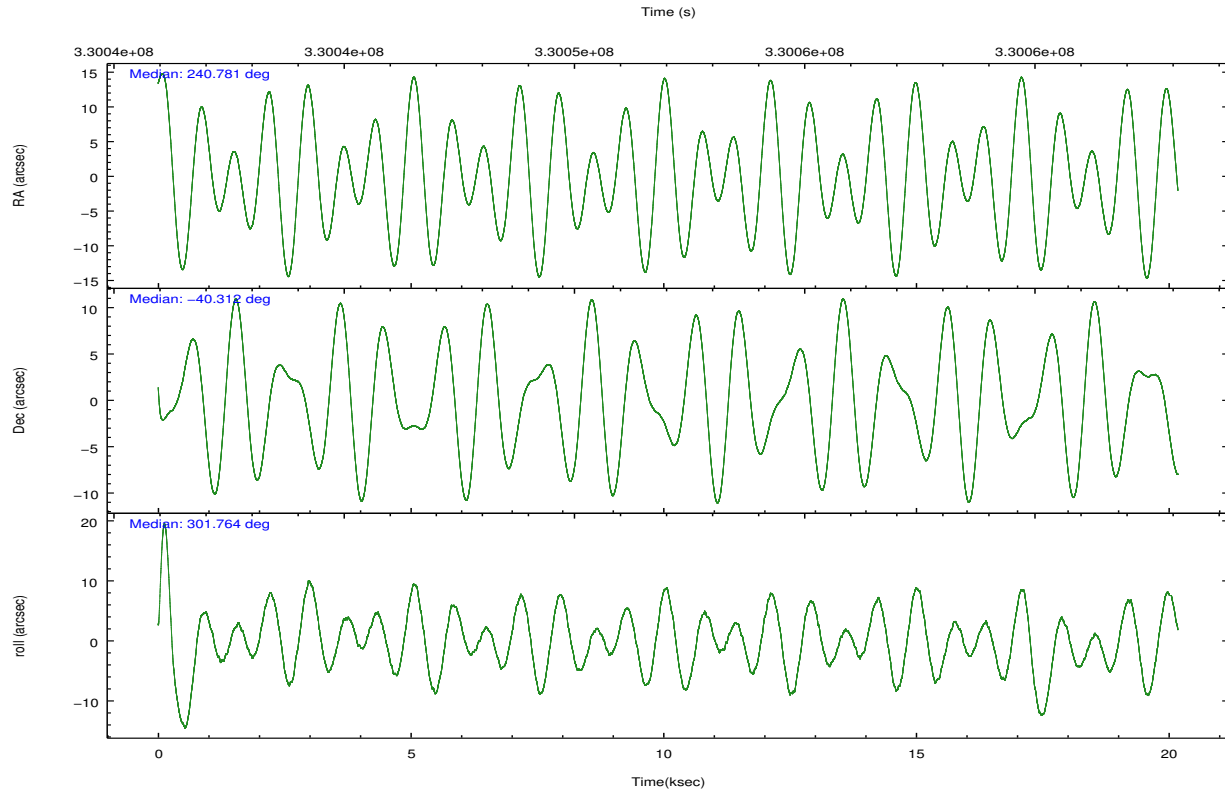
	ccd 0	ccd 1	ccd 2	ccd 3
grade 0 events	10378	15349	10333	10761
	6%	8%	5%	5%
grade 1 events	108	128	132	115
	0%	0%	0%	0%
grade 2 events	5158	5725	4889	4625
	2%	3%	2%	2%
grade 3 events	2278	2290	2119	2126
	1%	1%	1%	1%
grade 4 events	2020	2265	2180	2180
	1%	1%	1%	1%
grade 5 events	7981	8432	7633	9108
	4%	4%	4%	4%
grade 6 events	4056	4856	3778	4125
	2%	2%	1%	2%
grade 7 events	140397	141827	158378	152437
	81%	78%	83%	82%

## 2.2 Compared Parameters

Parameter	Planned	Actual	Parameter	Planned	Actual
Instrument	ACIS	ACIS	Obspar format version number	7	7
Detector	ACIS-0123	ACIS-0123	Obspar file type	PREDICTED	ACTUAL
Grating	NONE	NONE	Obspar update status	NONE	UPDATED
Data mode	FAINT	FAINT	Number of optional ACIS chips dropped	0	0
Observation mode	POINTING	POINTING	On-chip summing requested	N	N
[deg] Pointing RA	240.749096	240.7809635474839	Subarray requested	NONE	NONE
[deg] Pointing Dec	-40.299375	-40.3122967549746	Alternating exposures requested	N	N
[deg] Pointing Roll	301.535726	301.7650194471298	[s] Primary exposure time	0.000000	3.1
[mm] SIM focus pos	-0.782348	-0.7809083437167272			
[mm] SIM defocus	0	0.001439871863259334			
[mm] SIM translation stage pos	-233.592463	-233.5874344608287			
[mm] SIM translation stage offset	0	-0.005018542100998502			
[s] Observation start time (MET)	330042126.184000	330041231.48361			
Observation start date	2008-06-16T22:21:01	2008-06-16T22:07:11			
[s] Observation end time (MET)	330062126.184000	330062813.37216			
Observation end date	2008-06-17T03:54:21	2008-06-17T04:06:53			
Read mode	TIMED	TIMED			

## 2.3 Aspect





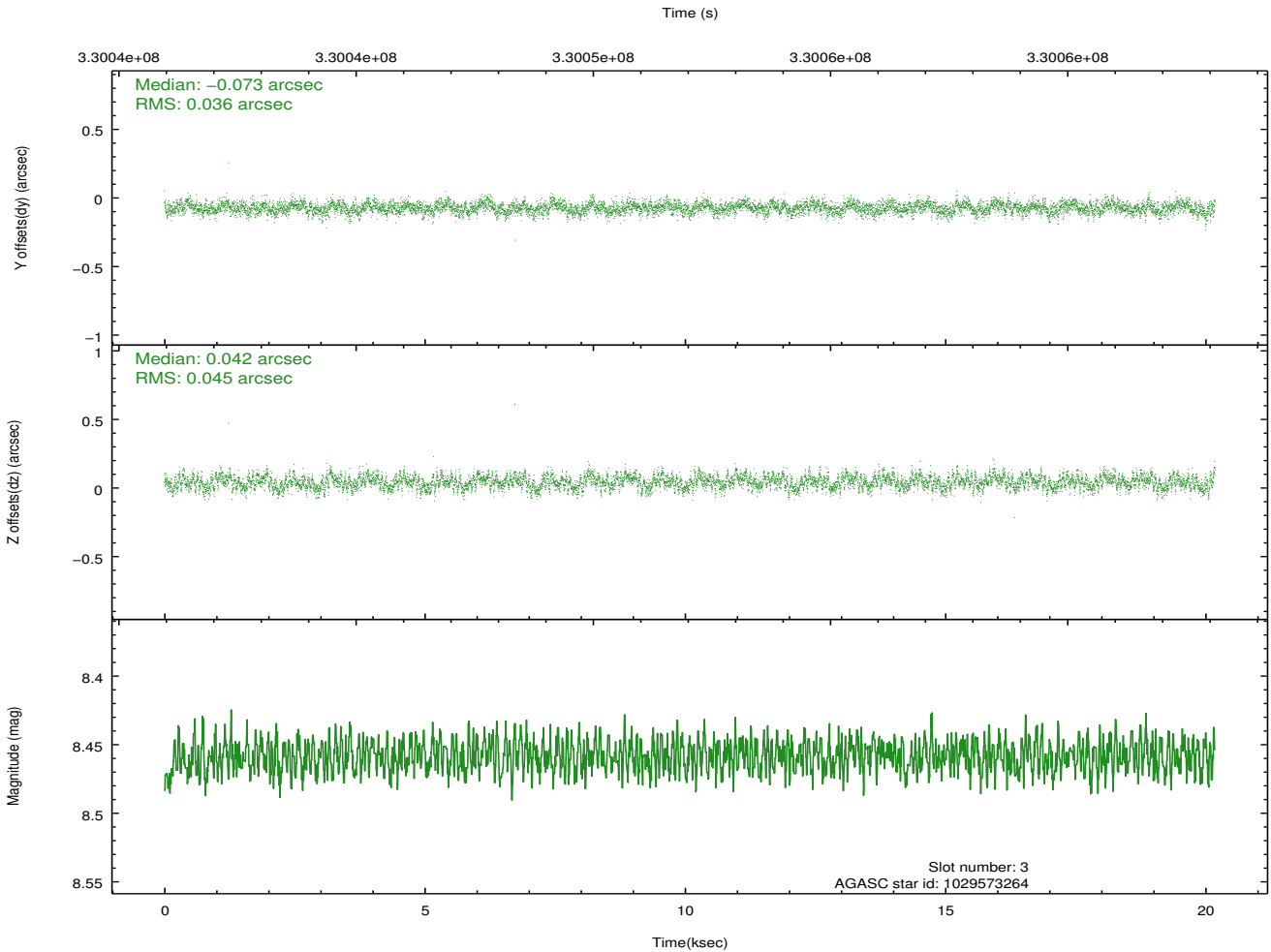
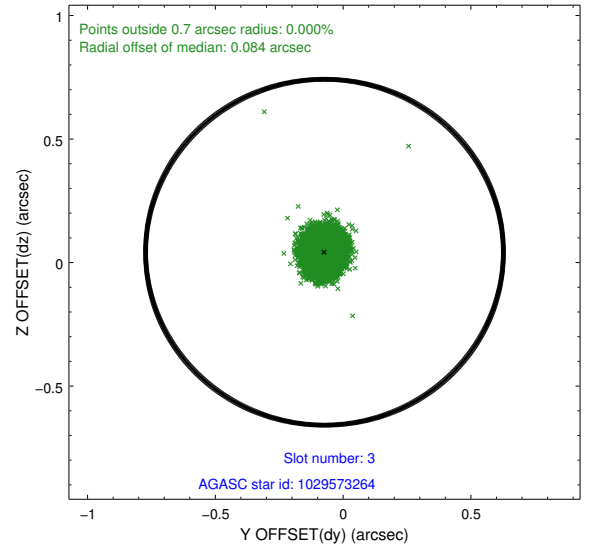
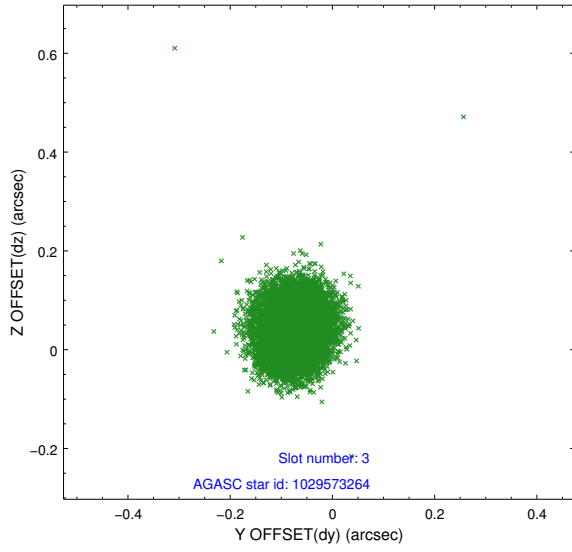
### Slot Statistics

slot	status	id	mag	n_pts	med_dy	med_dz	dr1	dr2	ra	dec	mean_y	mean_z
0	FID	ACIS-I-1	7.05	4922	0.014	0.034	0.011	0.017	0.000000	0.000000	925.54	-837.89
1	FID	ACIS-I-5	7.03	4922	-0.204	0.026	0.009	0.015	0.000000	0.000000	-1822.71	1059.46
2	FID	ACIS-I-6	7.04	4922	0.100	0.010	0.008	0.013	0.000000	0.000000	390.94	1704.19
3	GUIDE	1029573264	8.46	9841	-0.073	0.042	0.061	0.097	241.313581	-40.319539	876.48	1280.15
4	GUIDE	1029575760	8.01	9842	0.077	0.152	0.067	0.106	241.064770	-40.844631	2124.42	-294.61
5	GUIDE	1029578000	7.73	9843	-0.084	-0.142	0.058	0.094	241.211449	-40.737672	2007.56	247.79
6	GUIDE	1029578024	9.04	9770	-0.029	-0.073	0.084	0.136	241.750782	-40.334089	1557.82	2269.45
7	GUIDE	1029580448	9.66	9831	0.105	0.023	0.106	0.172	240.622045	-39.636367	-2218.01	948.32

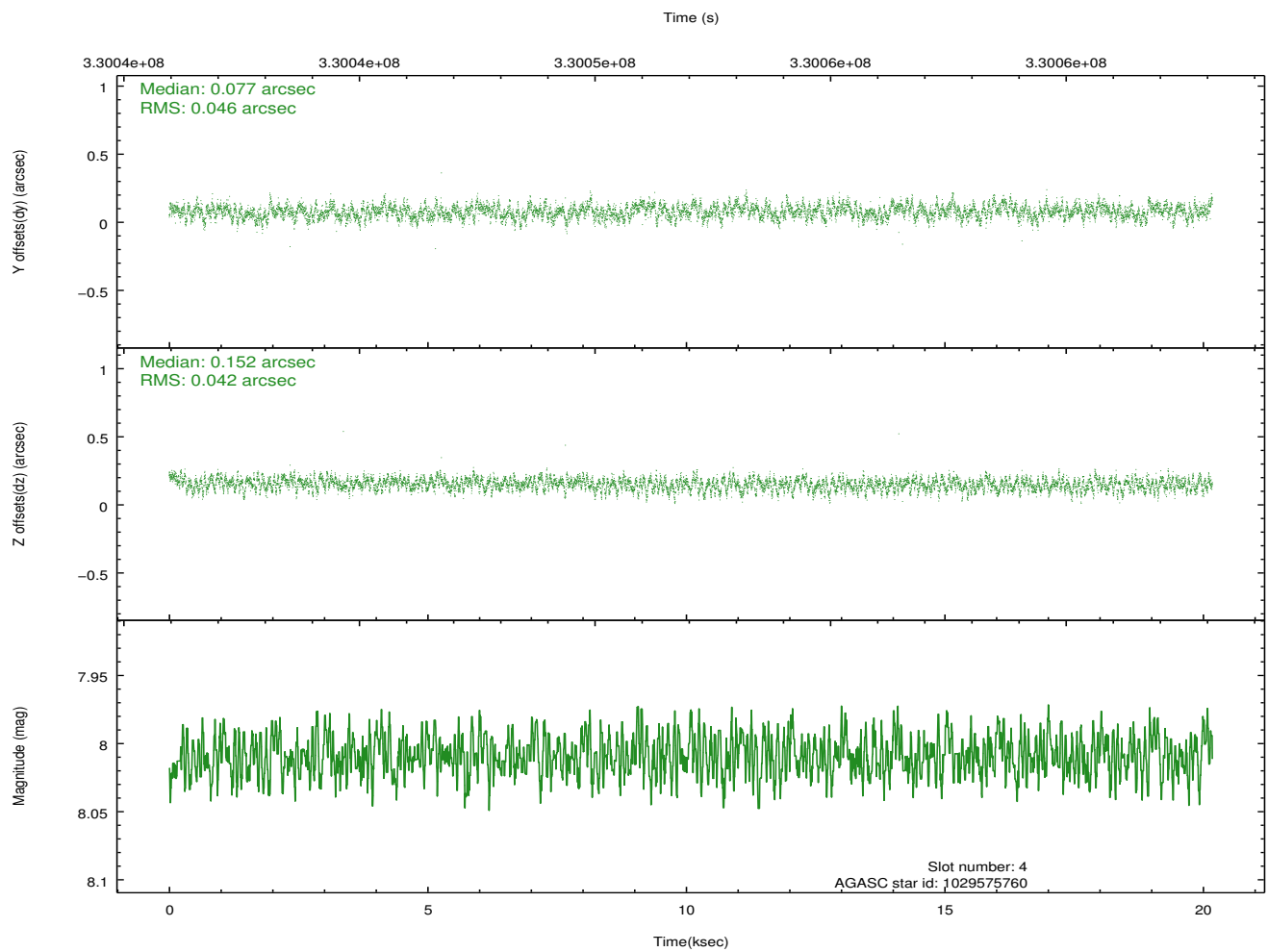
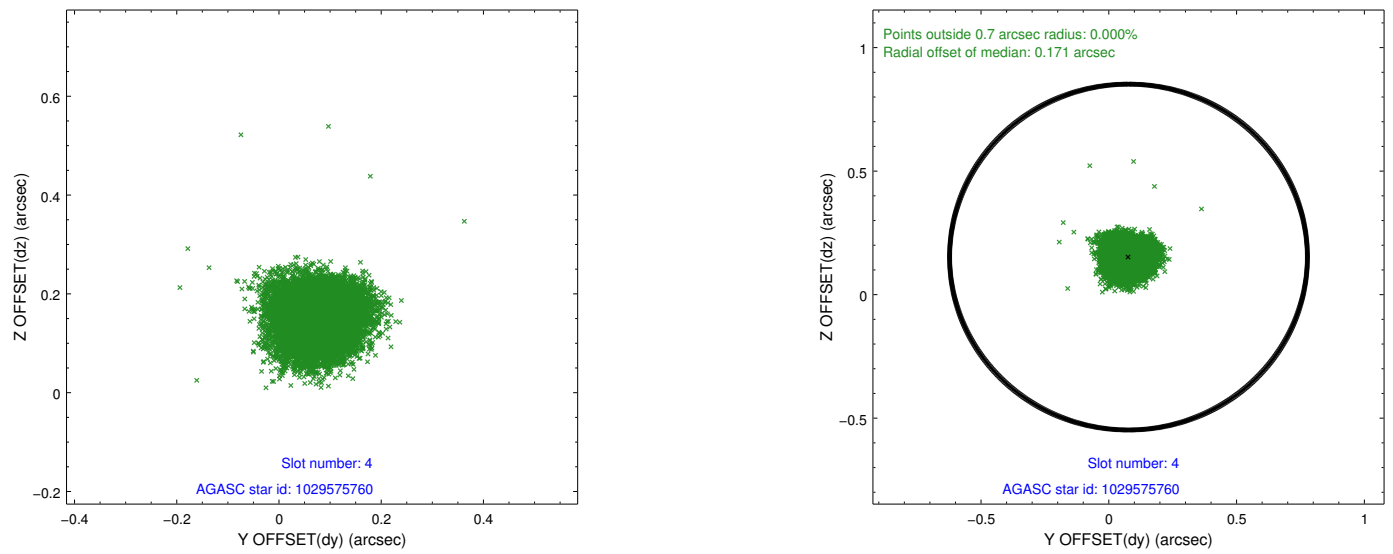
∞

## 2.4 Star Slots

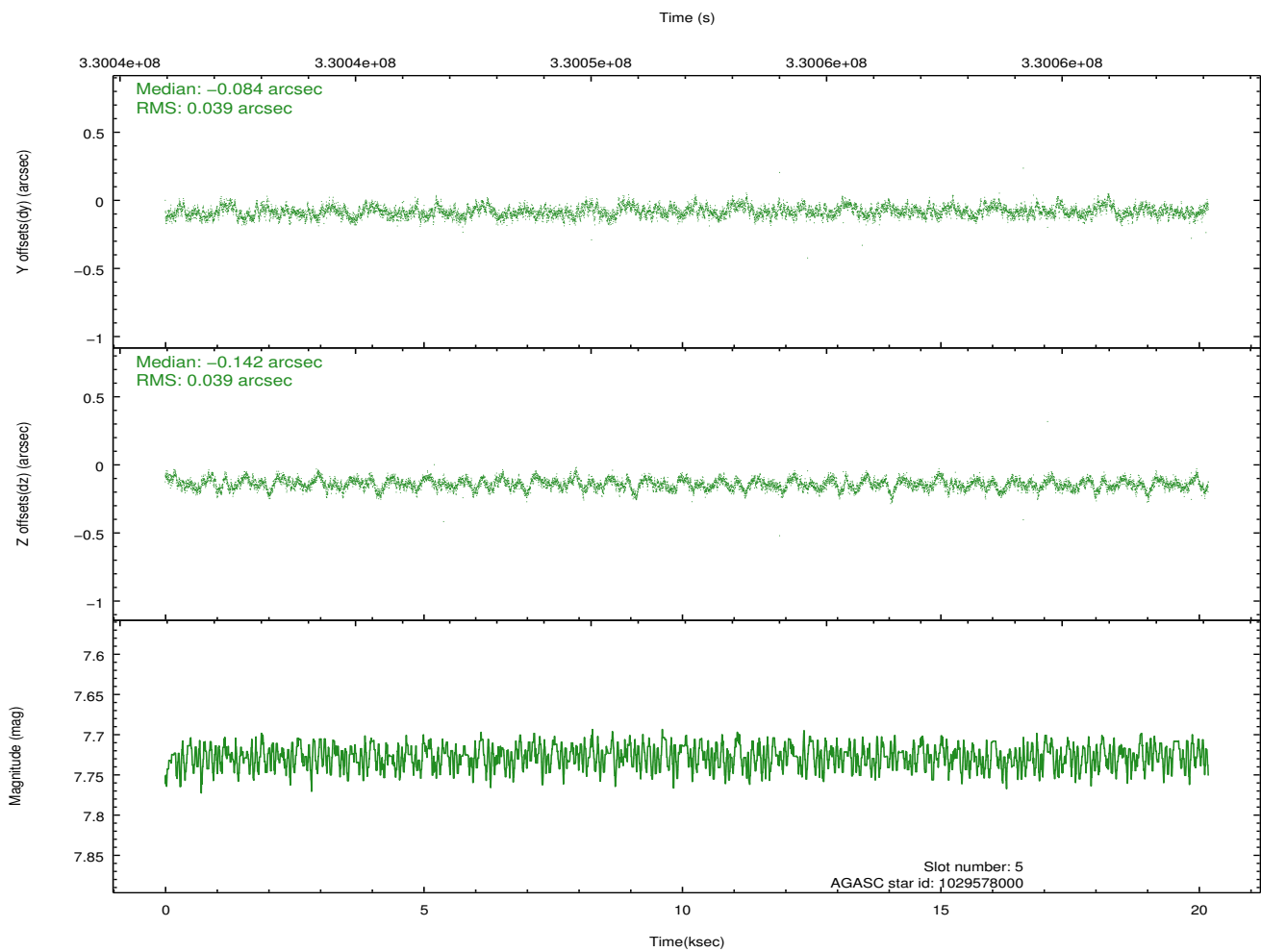
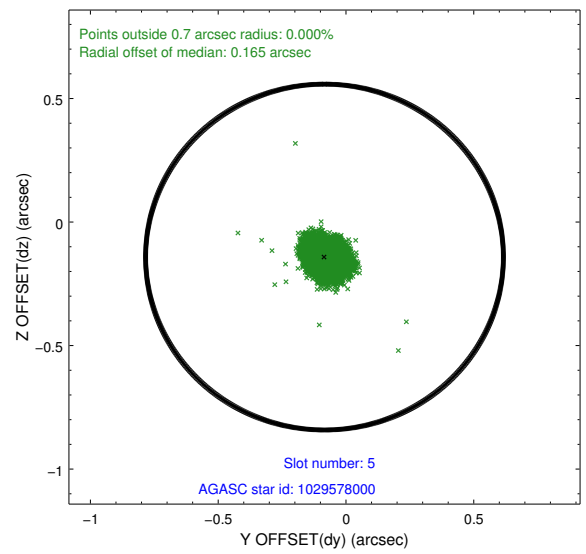
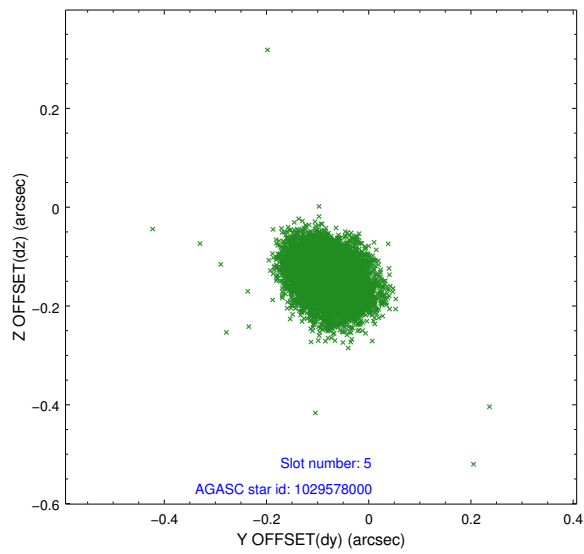
### 2.4.1 Slot 3



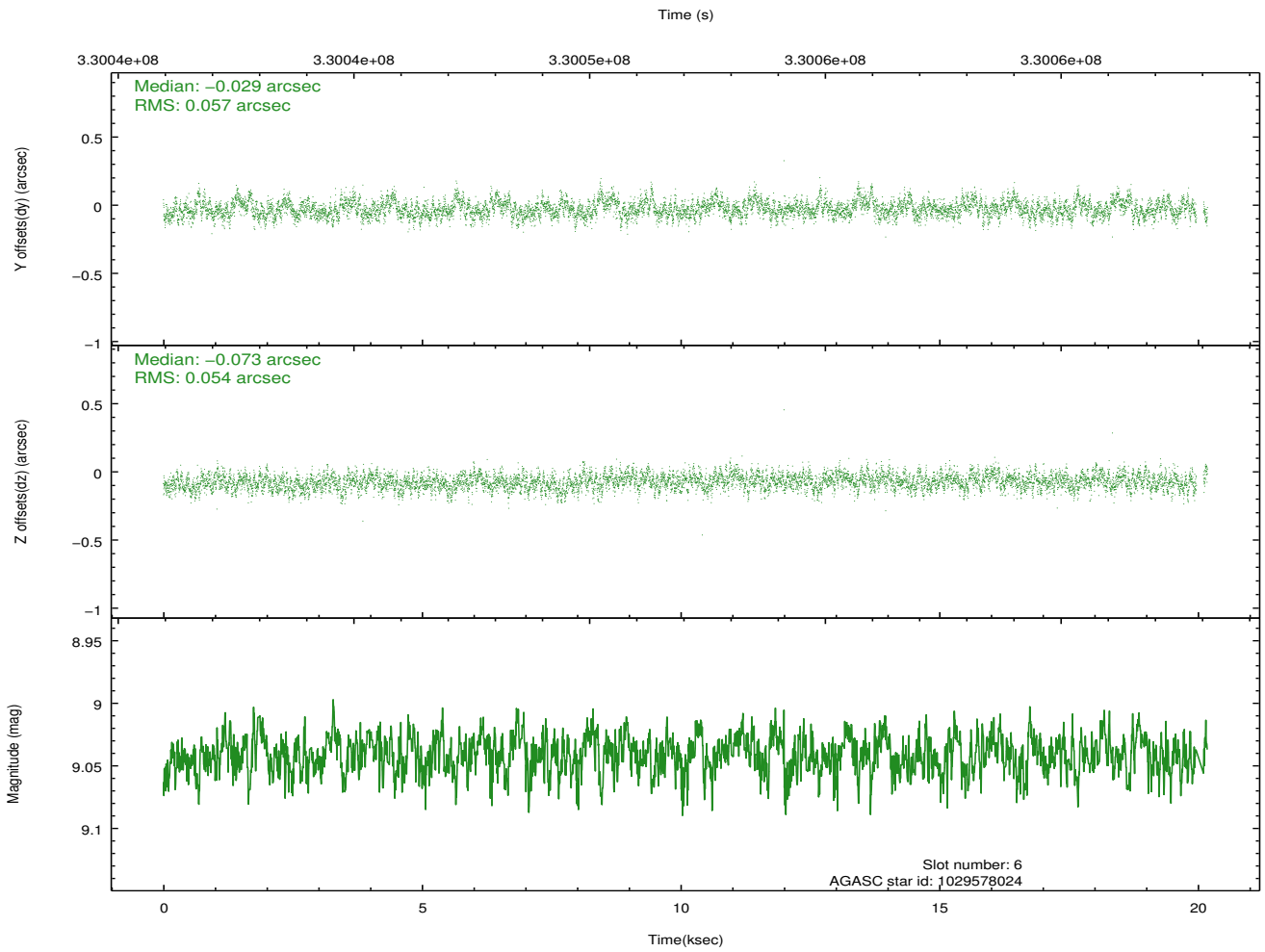
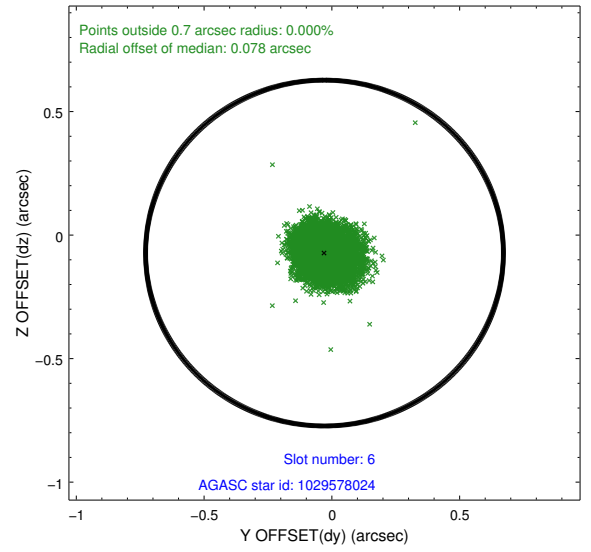
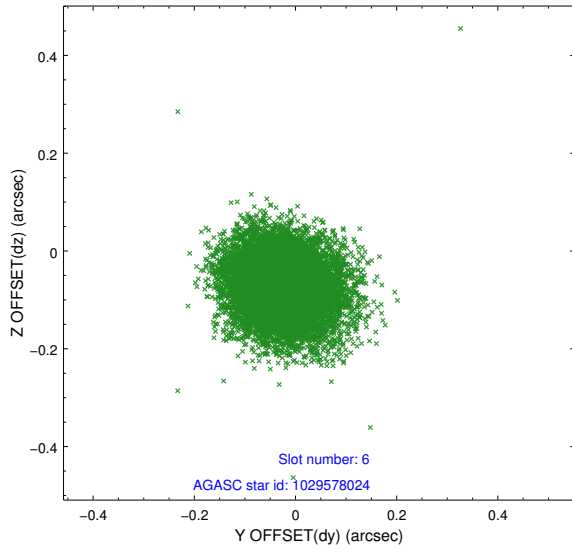
## 2.4.2 Slot 4



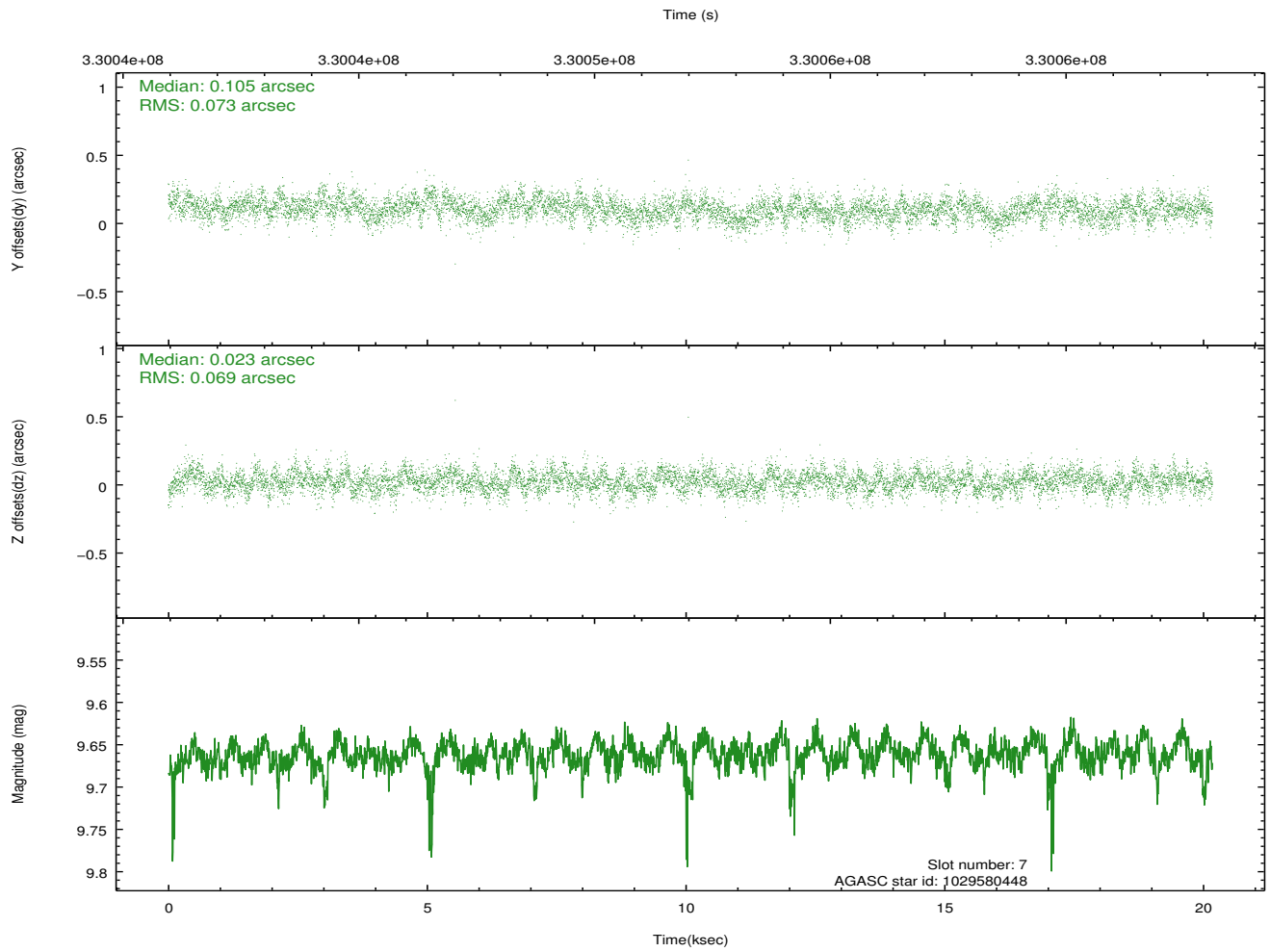
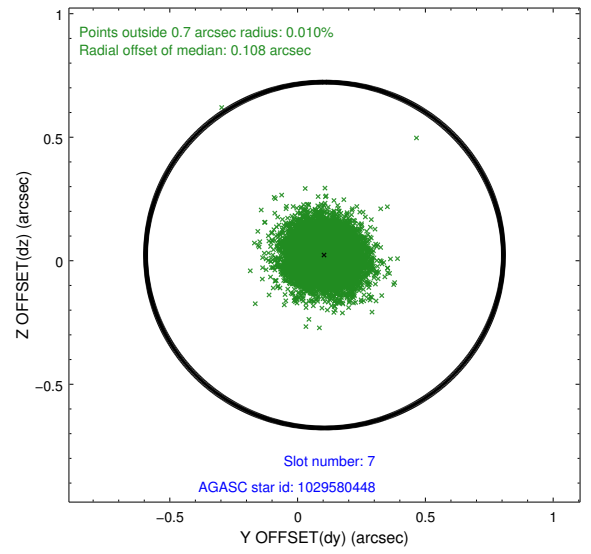
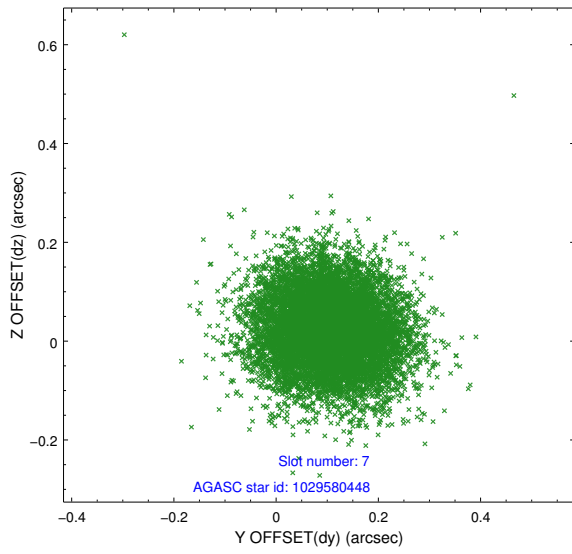
### 2.4.3 Slot 5



### 2.4.4 Slot 6

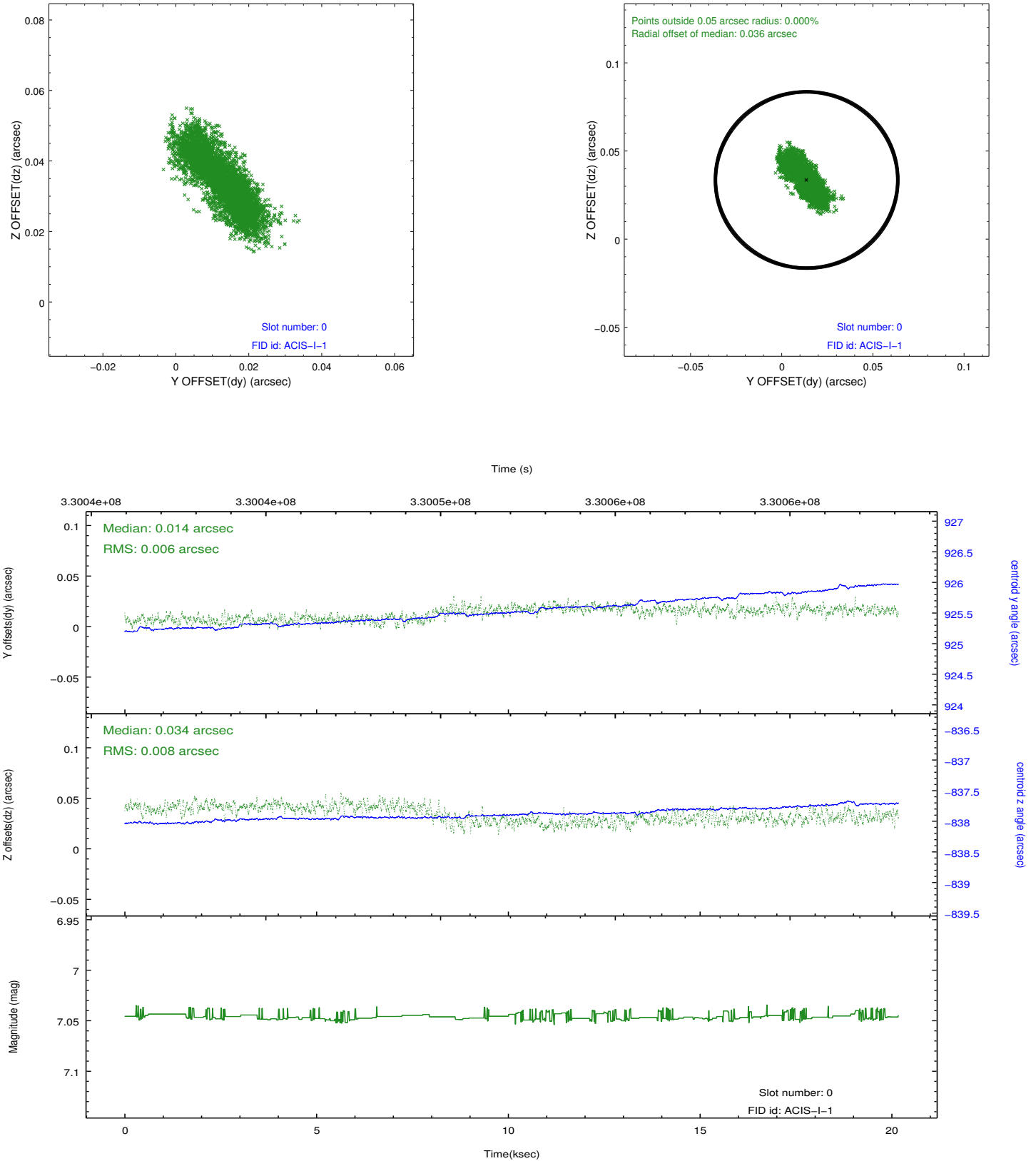


## 2.4.5 Slot 7

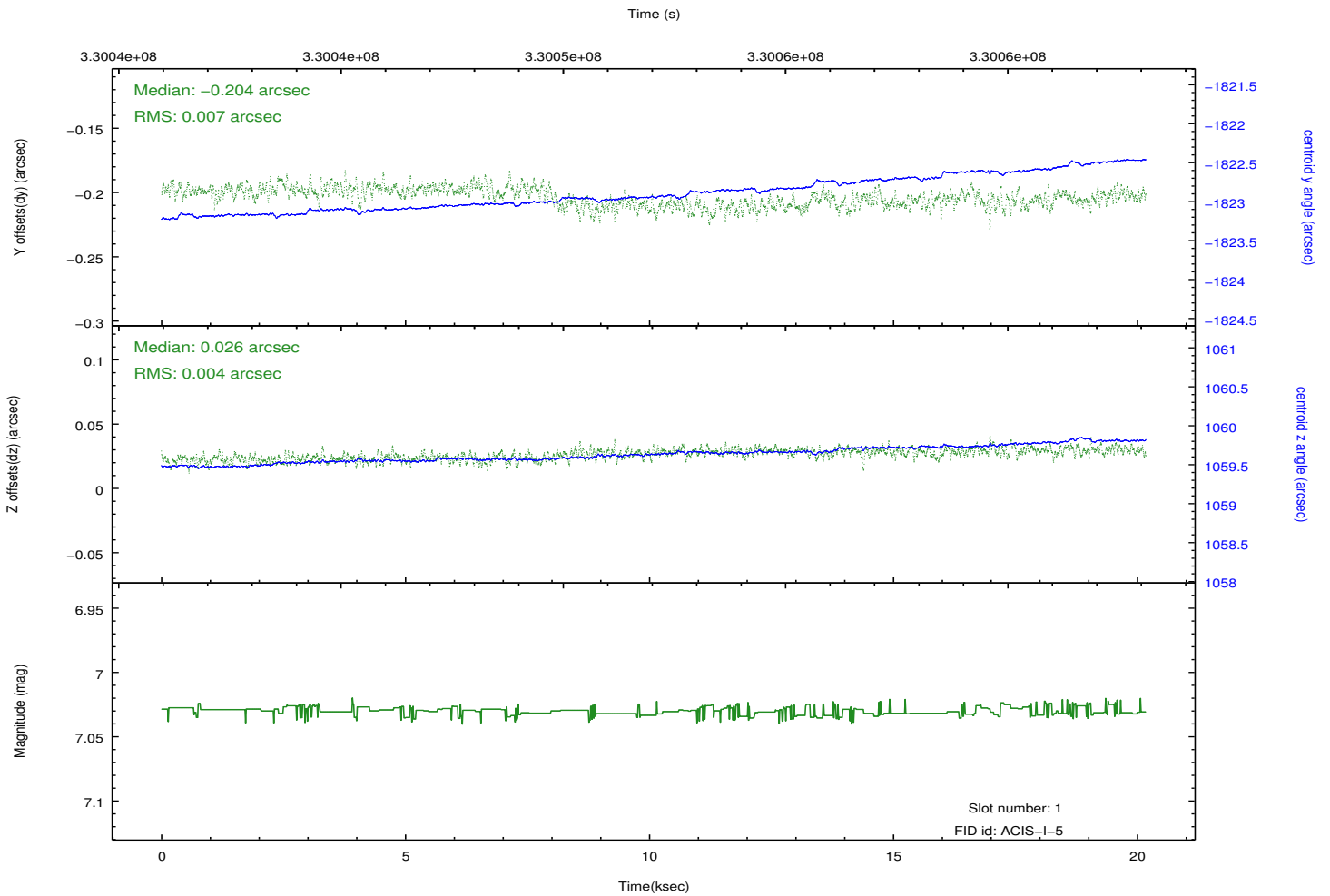
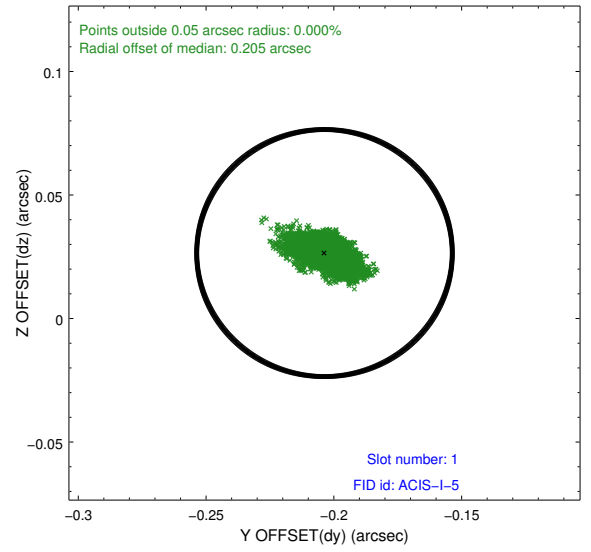
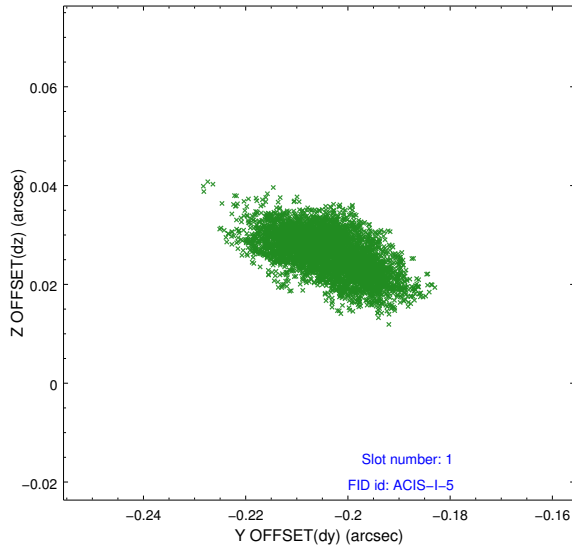


## 2.5 FID Slots

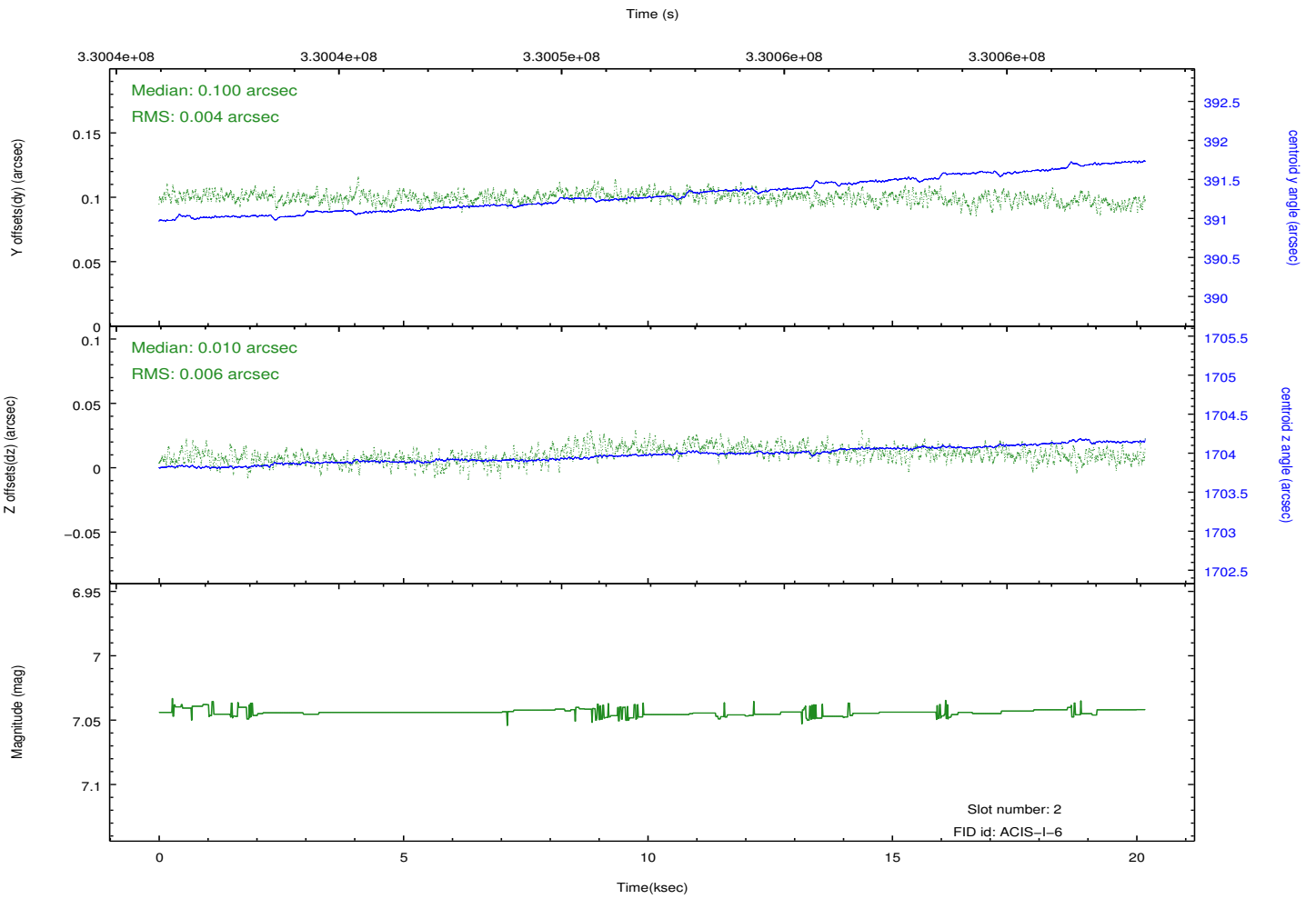
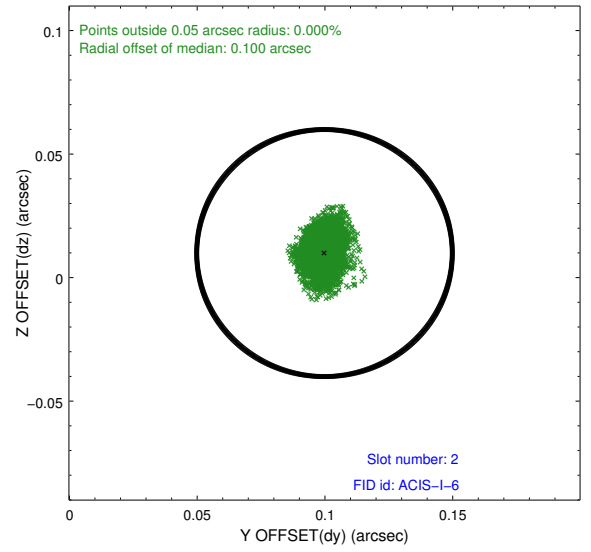
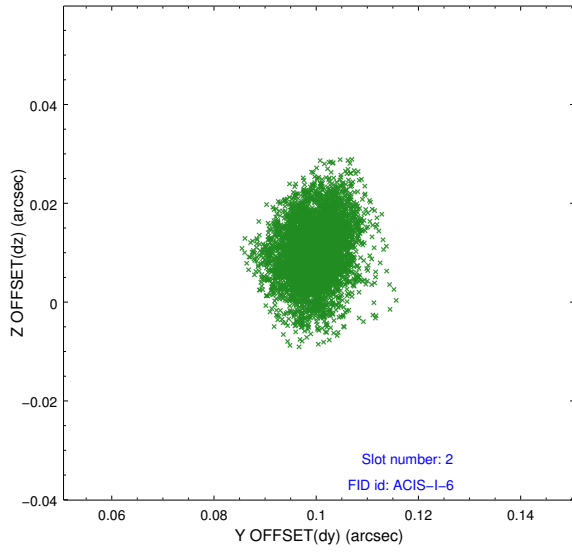
### 2.5.1 Slot 0



## 2.5.2 Slot 1



### 2.5.3 Slot 2



## **A Summary**

### **A.1 Status**

V&V Scientist	Beth Sundheim
V&V Date (YYYY-MM-DD)	2012.05.22
V&V Edition	1
V&V Disposition and Status	OK
V&V Charge Time	20.1097001

### **A.2 Comments**