

V&V Reference Report

L2 ASCDS Version : 8.4.4

Observation 9534 - L2 Version 2
Chandra X-Ray Center

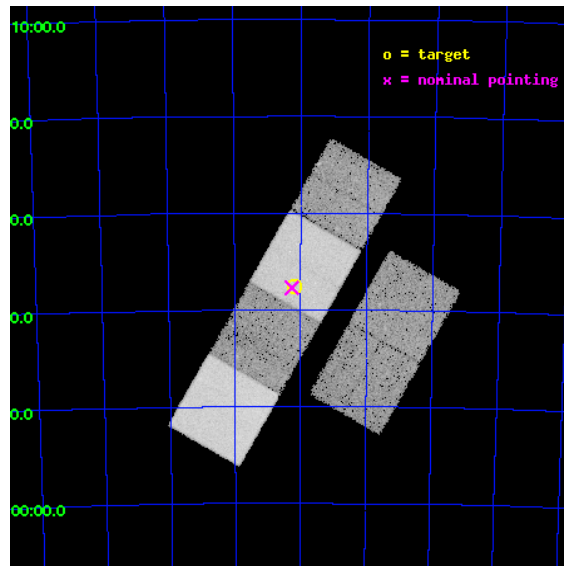
L2 Processing Date : May 12 2012

Contents

| | | |
|----------|-------------------------------|-----------|
| 1 | Front | 2 |
| 2 | OBI | 3 |
| 2.1 | OBI | 3 |
| 2.1.1 | Images | 3 |
| 2.1.2 | Bias | 3 |
| 2.1.3 | Parameters | 4 |
| 2.1.4 | Events | 4 |
| 2.2 | Compared Parameters | 5 |
| 2.3 | Aspect | 6 |
| 2.4 | Star Slots | 9 |
| 2.4.1 | Slot 3 | 9 |
| 2.4.2 | Slot 4 | 10 |
| 2.4.3 | Slot 5 | 11 |
| 2.4.4 | Slot 6 | 12 |
| 2.4.5 | Slot 7 | 13 |
| 2.5 | FID Slots | 14 |
| 2.5.1 | Slot 0 | 14 |
| 2.5.2 | Slot 1 | 15 |
| 2.5.3 | Slot 2 | 16 |
| A | Summary | 17 |
| A.1 | Status | 17 |
| A.2 | Comments | 17 |

1 Front

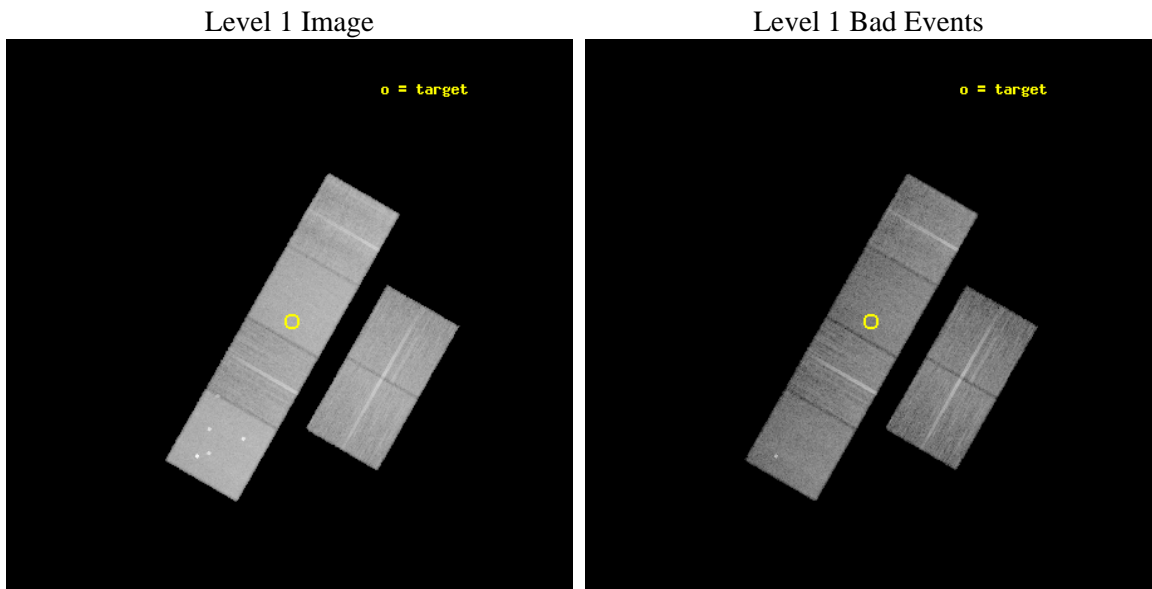
| | | |
|----------|--|---|
| seq_num | 600675 | Sequence number |
| obs_id | 9534 | Observation id |
| title | Galaxies across the Octaves: A Chandra Legacy Survey of SINGS Galaxies | Proposal title |
| observer | Dr Leigh Jenkins | Principal investigator |
| object | NGC 2915 | Source name |
| dtycycle | 0 | |
| cycle | P | events from which exps? Prim/Second/Both |
| ra_targ | 141.547917 | Observer's specified target RA [deg] |
| dec_targ | -76.626389 | Observer's specified target Dec [deg] |
| ra_nom | 141.56629602046 | Nominal RA [deg] |
| dec_nom | -76.62872782474 | Nominal Dec [deg] |
| roll_nom | 299.77971092158 | Nominal Roll [deg] |
| revision | 2 | Processing version of data |
| ontime | 15551.138172328 | Sum of GTIs [s] |
| livetime | 15354.220297019 | Livetime [s] |
| ontime2 | 15547.938212097 | Sum of GTIs [s] |
| ontime3 | 15551.015052319 | Sum of GTIs [s] |
| ontime5 | 15551.097132325 | Sum of GTIs [s] |
| ontime6 | 15551.056092322 | Sum of GTIs [s] |
| ontime7 | 15551.138172328 | Sum of GTIs [s] |
| ontime8 | 15550.974012315 | Sum of GTIs [s] |
| l2events | 245913 | Number of level 2 events |



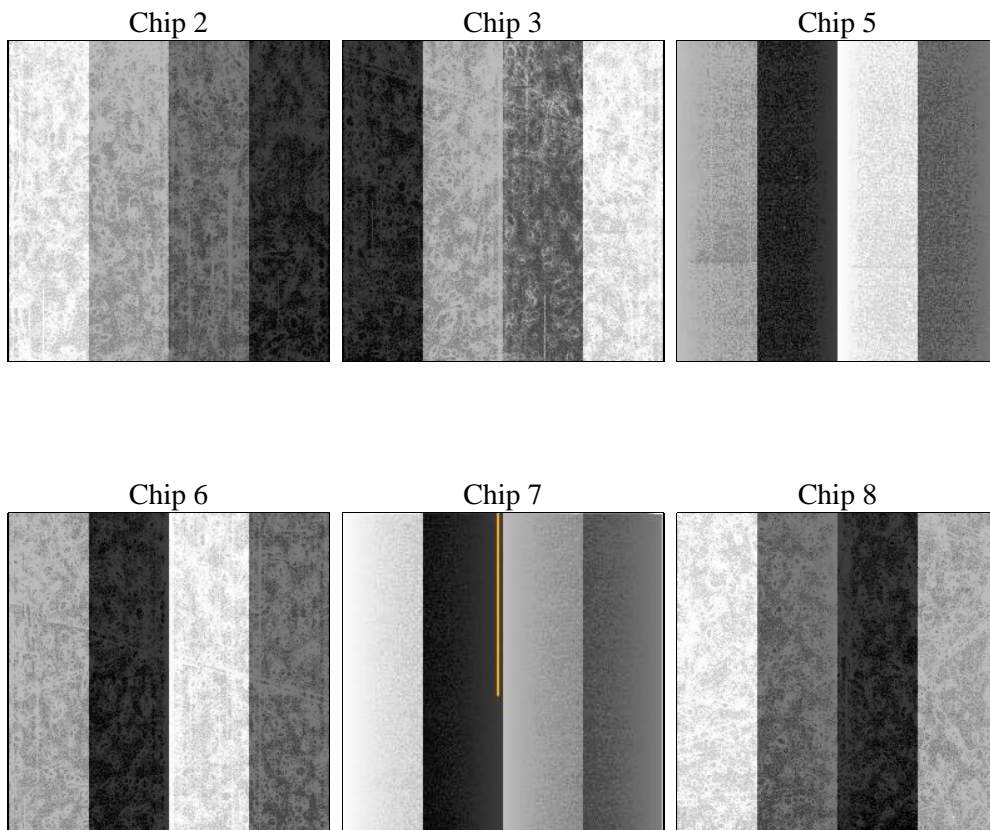
2 OBI

2.1 OBI

2.1.1 Images



2.1.2 Bias



2.1.3 Parameters

| | | | | | |
|----------|---------------------|--------------------------------|----------------|-----------------|---|
| obi_num | 0 | Obi number | sched_exp_time | 15600.000000 | [s] Scheduled observation exposure time |
| ascdsver | 8.4.4 | Processing system revision | ontime | 15551.138172328 | Sum of GTIs [s] |
| caldbver | 4.4.9 | | ontime2 | 15547.938212097 | Sum of GTIs [s] |
| date | 2012-05-13T00:01:39 | Date and time of file creation | ontime3 | 15551.015052319 | Sum of GTIs [s] |
| revision | 2 | Processing version of data | ontime5 | 15551.097132325 | Sum of GTIs [s] |
| | | | ontime6 | 15551.056092322 | Sum of GTIs [s] |
| | | | ontime7 | 15551.138172328 | Sum of GTIs [s] |
| | | | ontime8 | 15550.974012315 | Sum of GTIs [s] |
| | | | l1events | 1062030 | Number of level 1 events |

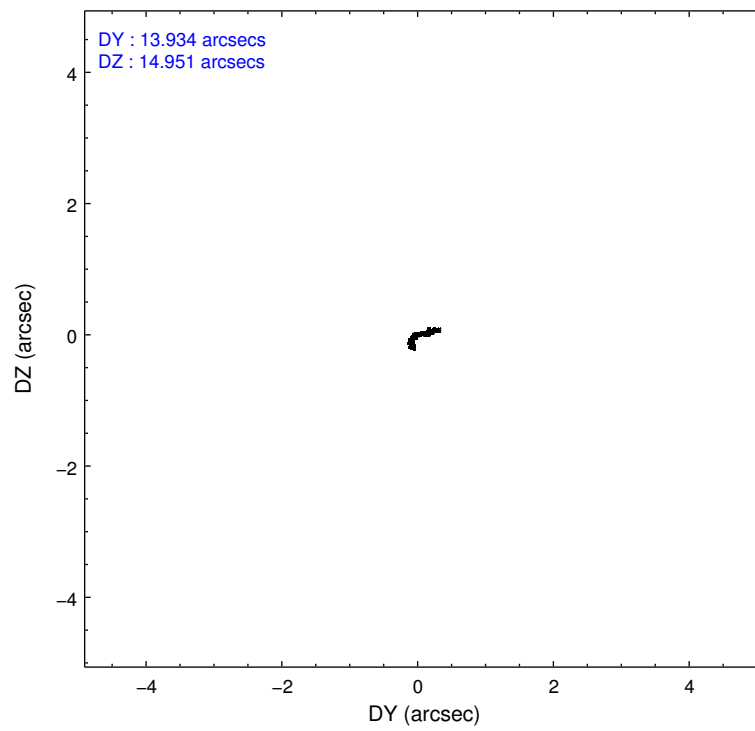
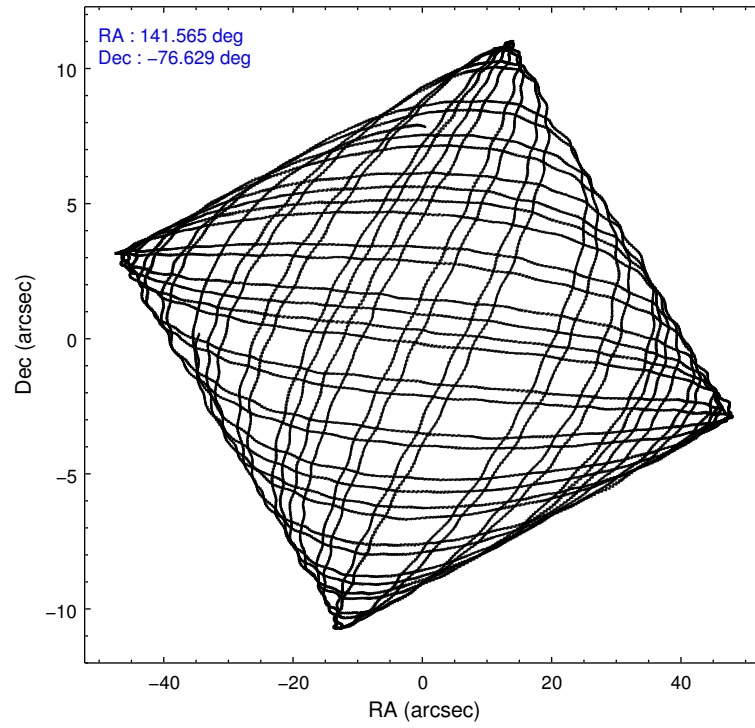
2.1.4 Events

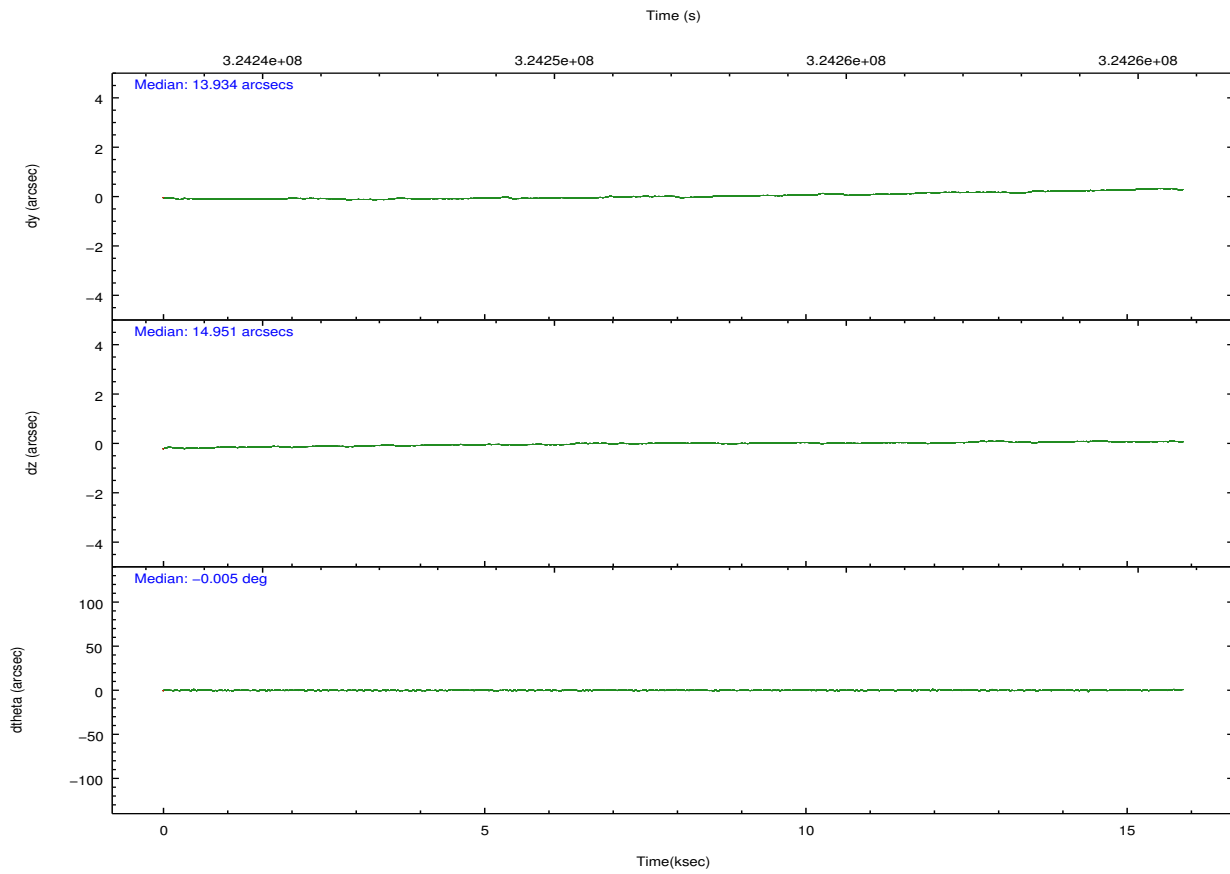
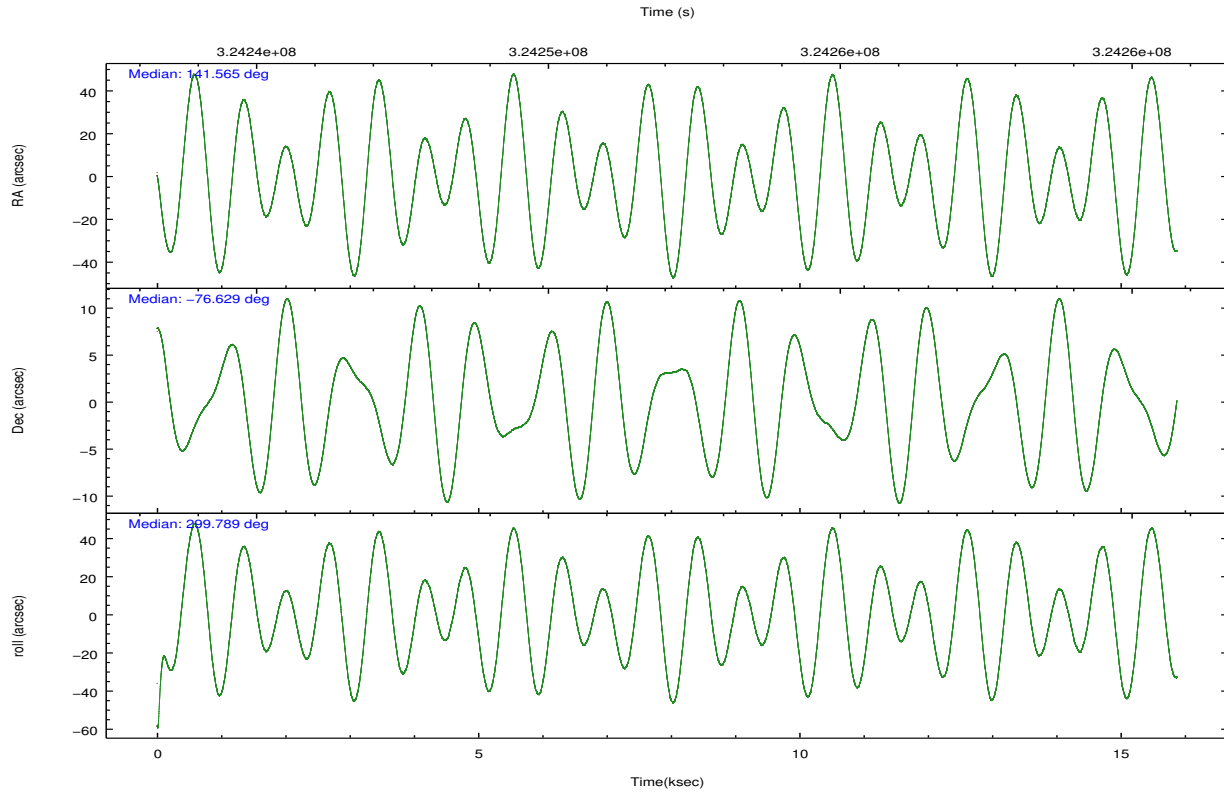
| | ccd 2 | ccd 3 | ccd 5 | ccd 6 | ccd 7 | ccd 8 | | ccd 2 | ccd 3 | ccd 5 | ccd 6 | ccd 7 | ccd 8 |
|-----------------|--------|--------|--------|--------|--------|--------|----------------|--------|--------|--------|--------|-------|--------|
| level 1 events | 150851 | 142331 | 232948 | 145778 | 204297 | 185825 | grade 0 events | 7519 | 7603 | 13642 | 6997 | 7163 | 13601 |
| rejected events | 133321 | 124766 | 122707 | 127943 | 118894 | 142839 | | 4% | 5% | 5% | 4% | 3% | 7% |
| rejected % | 88% | 87% | 52% | 87% | 58% | 76% | grade 1 events | 95 | 95 | 823 | 94 | 202 | 125 |
| | | | | | | | | 0% | 0% | 0% | 0% | 0% | 0% |
| | | | | | | | grade 2 events | 3899 | 3480 | 33497 | 3947 | 17423 | 9639 |
| | | | | | | | | 2% | 2% | 14% | 2% | 8% | 5% |
| | | | | | | | grade 3 events | 1648 | 1644 | 3761 | 1710 | 7453 | 4389 |
| | | | | | | | | 1% | 1% | 1% | 1% | 3% | 2% |
| | | | | | | | grade 4 events | 1596 | 1698 | 3502 | 1643 | 7286 | 4157 |
| | | | | | | | | 1% | 1% | 1% | 1% | 3% | 2% |
| | | | | | | | grade 5 events | 6083 | 6973 | 15886 | 7004 | 19263 | 9402 |
| | | | | | | | | 4% | 4% | 6% | 4% | 9% | 5% |
| | | | | | | | grade 6 events | 2873 | 3145 | 55886 | 3547 | 46114 | 11213 |
| | | | | | | | | 1% | 2% | 23% | 2% | 22% | 6% |
| | | | | | | | grade 7 events | 127138 | 117693 | 105951 | 120836 | 99393 | 133299 |
| | | | | | | | | 84% | 82% | 45% | 82% | 48% | 71% |

2.2 Compared Parameters

| Parameter | Planned | Actual | Parameter | Planned | Actual |
|-----------------------------------|---------------------|----------------------|---------------------------------------|-----------|---------|
| Instrument | ACIS | ACIS | Obspar format version number | 7 | 7 |
| Detector | ACIS-235678 | ACIS-235678 | Obspar file type | PREDICTED | ACTUAL |
| Grating | NONE | NONE | Obspar update status | NONE | UPDATED |
| Data mode | FAINT | FAINT | CCD I0 on | N | N |
| Observation mode | POINTING | POINTING | CCD I1 on | N | N |
| [deg] Pointing RA | 141.463482 | 141.566296020464 | CCD I2 on | O1 | Y |
| [deg] Pointing Dec | -76.615247 | -76.62872782474031 | CCD I3 on | O2 | Y |
| [deg] Pointing Roll | 299.523119 | 299.7797109215824 | CCD S0 on | N | N |
| [mm] SIM focus pos | -0.684267 | -0.6828225247311905 | CCD S1 on | Y | Y |
| [mm] SIM defocus | 0 | 0.001444936568705701 | CCD S2 on | Y | Y |
| [mm] SIM translation stage pos | -190.132523 | -190.1400660498719 | CCD S3 on | Y | Y |
| [mm] SIM translation stage offset | 0 | 0.00754346686406393 | CCD S4 on | Y | Y |
| [s] Observation start time (MET) | 324244365.184000 | 324243362.26333 | CCD S5 on | N | N |
| Observation start date | 2008-04-10T19:51:40 | 2008-04-10T19:36:02 | Number of optional ACIS chips dropped | 0 | 0 |
| [s] Observation end time (MET) | 324259965.184000 | 324260673.48918 | On-chip summing requested | N | N |
| Observation end date | 2008-04-11T00:11:40 | 2008-04-11T00:24:33 | Subarray requested | NONE | NONE |
| Read mode | TIMED | TIMED | Alternating exposures requested | N | N |
| | | | [s] Primary exposure time | 0.000000 | 3.2 |

2.3 Aspect



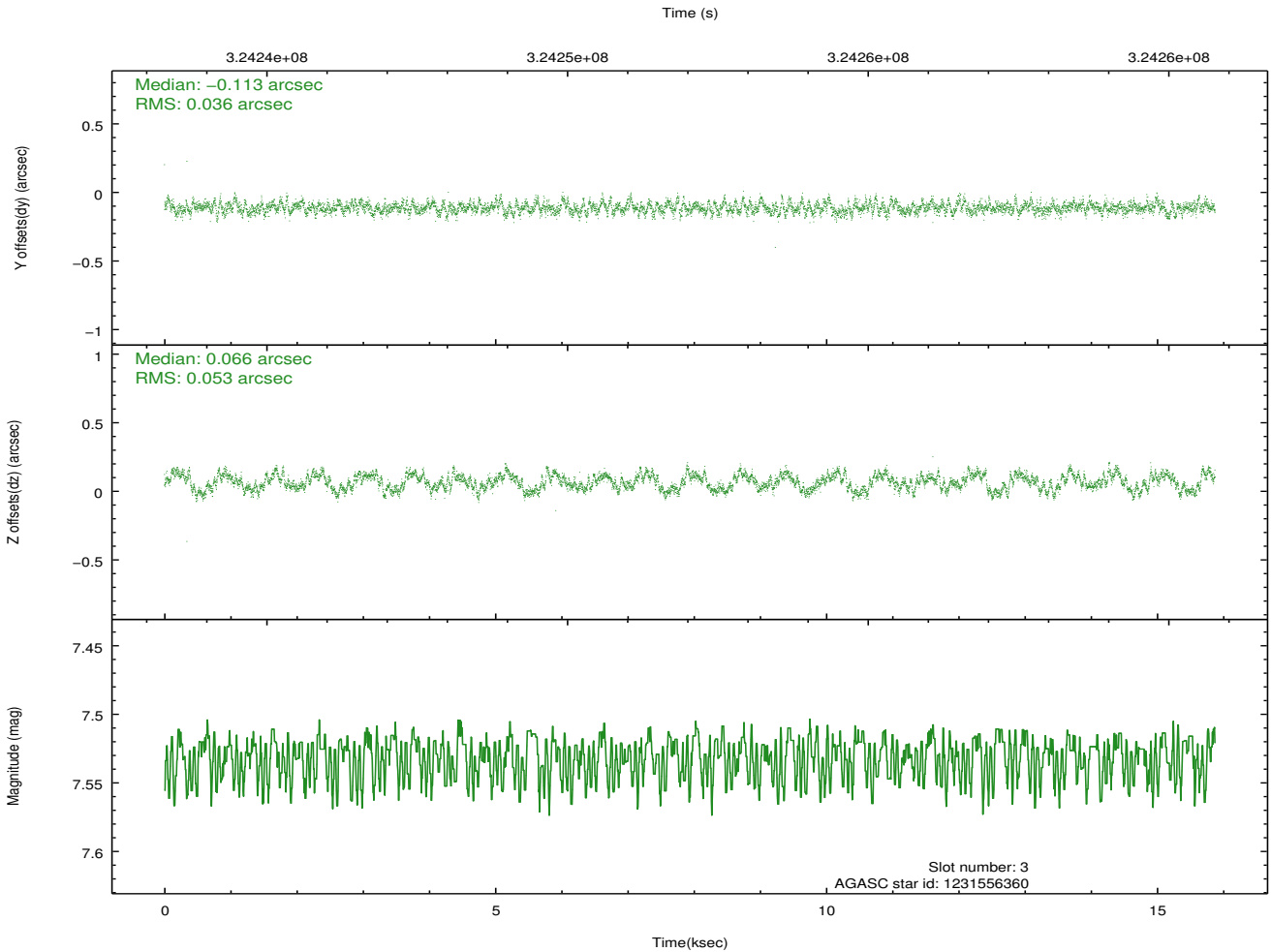
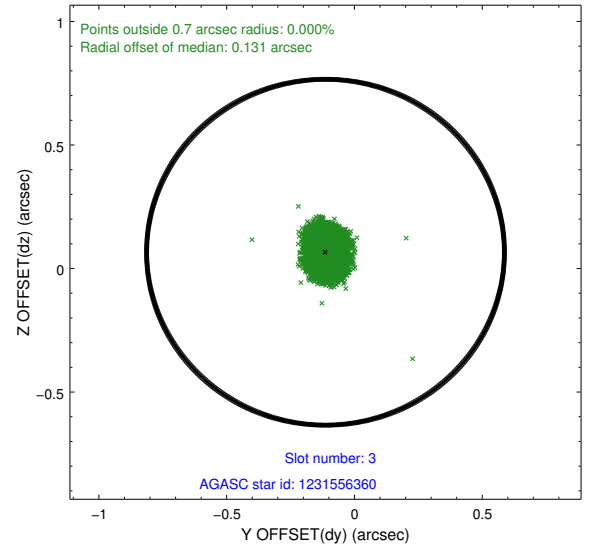
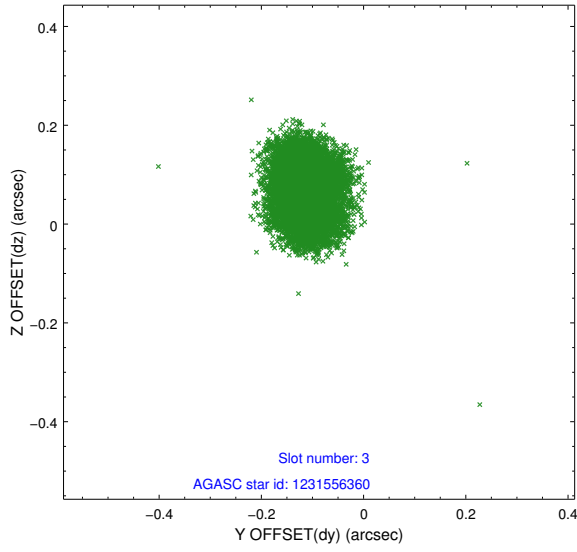


Slot Statistics

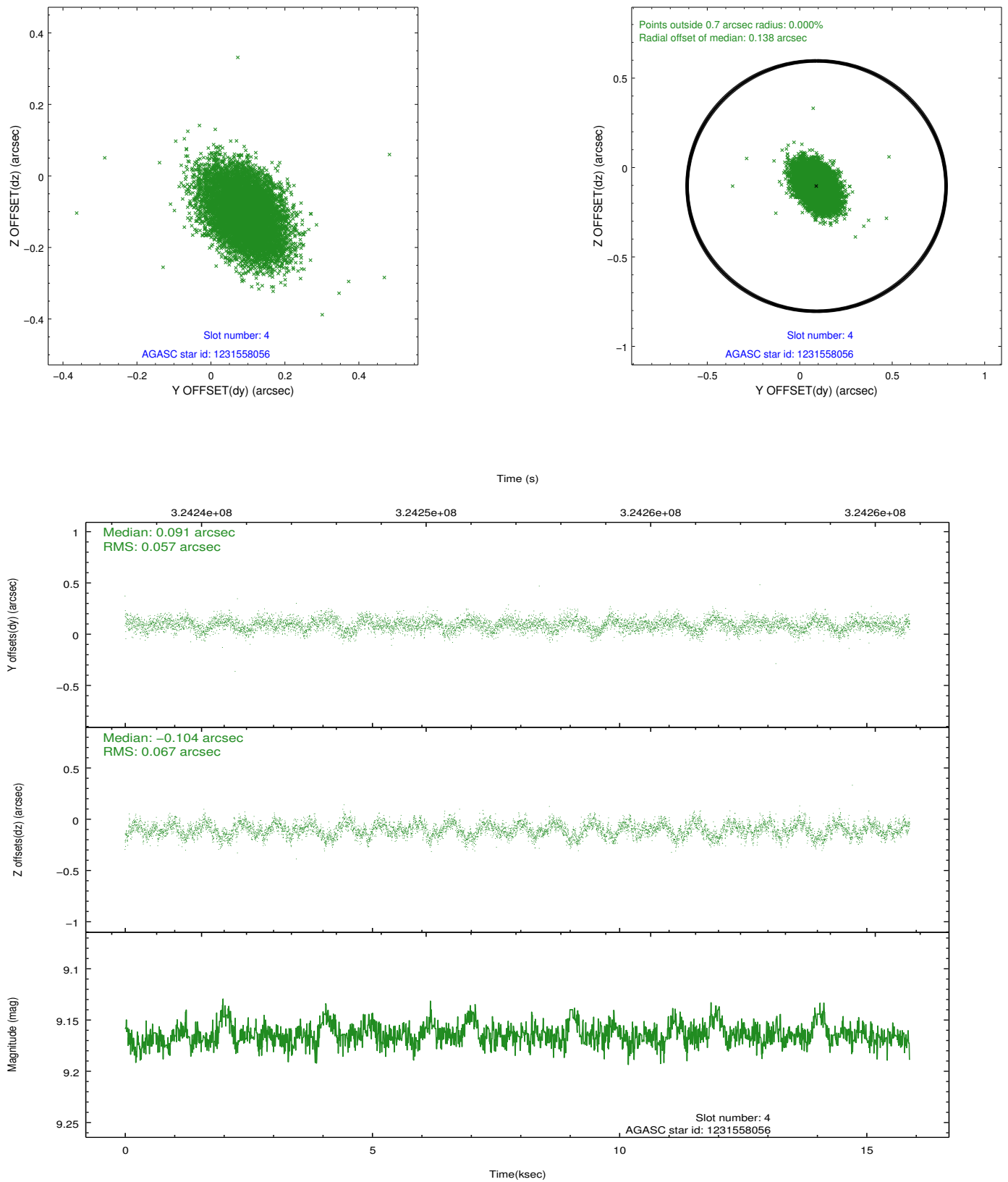
| slot | status | id | mag | n_pts | med_dy | med_dz | dr1 | dr2 | ra | dec | mean_y | mean_z |
|------|--------|------------|------|-------|--------|--------|-------|-------|------------|------------|----------|----------|
| 0 | FID | ACIS-S-2 | 6.86 | 3872 | -0.062 | 0.003 | 0.007 | 0.012 | 0.000000 | 0.000000 | -766.95 | -1736.31 |
| 1 | FID | ACIS-S-4 | 6.95 | 3872 | 0.144 | 0.029 | 0.007 | 0.011 | 0.000000 | 0.000000 | 2146.38 | 171.95 |
| 2 | FID | ACIS-S-5 | 6.97 | 3871 | -0.114 | -0.024 | 0.007 | 0.011 | 0.000000 | 0.000000 | -1819.51 | 165.83 |
| 3 | GUIDE | 1231556360 | 7.53 | 7743 | -0.113 | 0.066 | 0.070 | 0.106 | 141.129879 | -76.726017 | 211.45 | -436.26 |
| 4 | GUIDE | 1231558056 | 9.16 | 7736 | 0.091 | -0.104 | 0.091 | 0.152 | 140.990573 | -75.952299 | -2279.93 | 816.38 |
| 5 | GUIDE | 1231559768 | 8.67 | 7737 | 0.083 | 0.002 | 0.068 | 0.108 | 142.205647 | -76.505230 | -33.63 | 736.56 |
| 6 | GUIDE | 1232081760 | 9.19 | 7735 | -0.114 | 0.036 | 0.144 | 0.209 | 141.677503 | -77.241571 | 2046.29 | -962.83 |
| 7 | GUIDE | 1231556952 | 9.29 | 7732 | 0.049 | -0.010 | 0.106 | 0.164 | 141.974854 | -76.129104 | -1304.27 | 1244.23 |

2.4 Star Slots

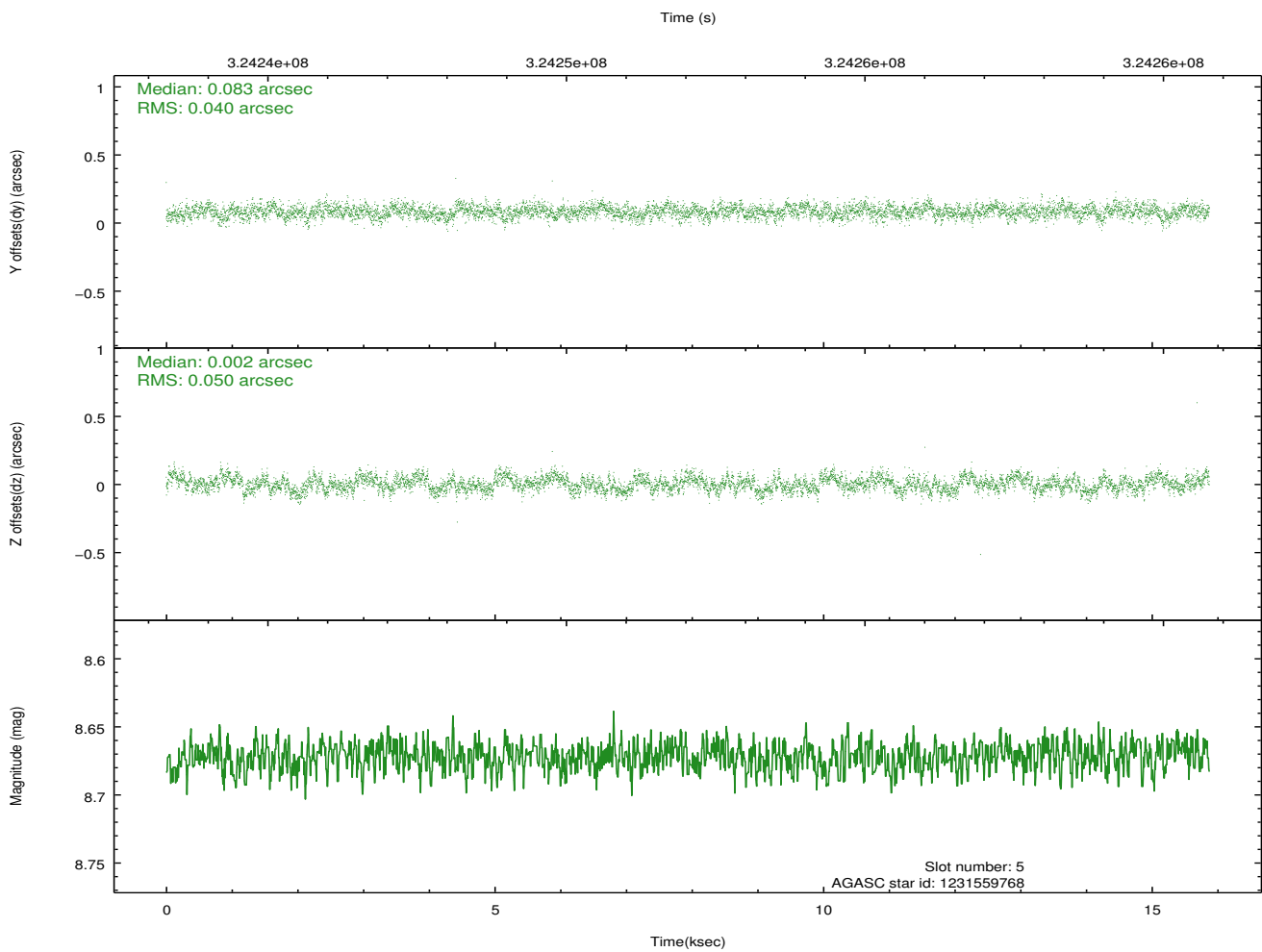
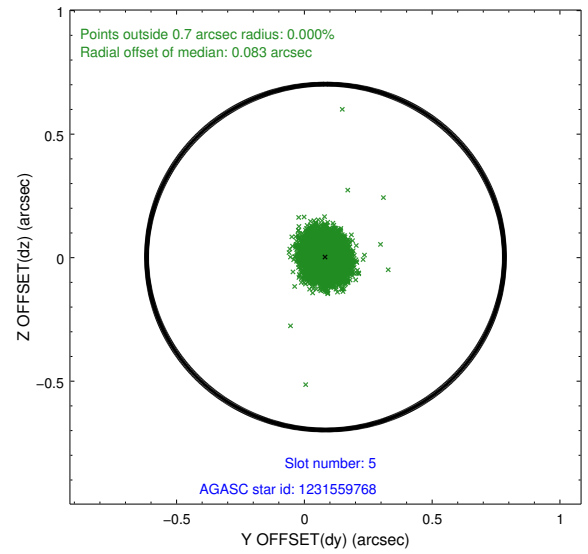
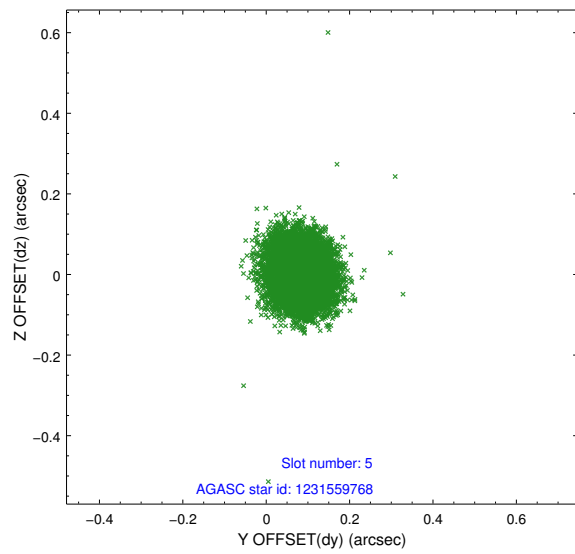
2.4.1 Slot 3



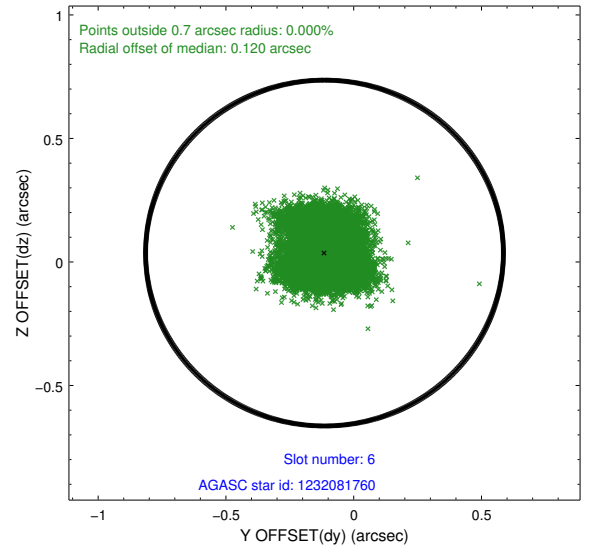
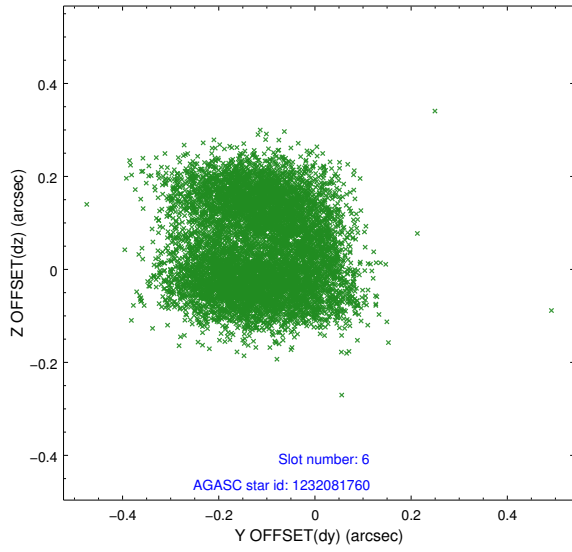
2.4.2 Slot 4



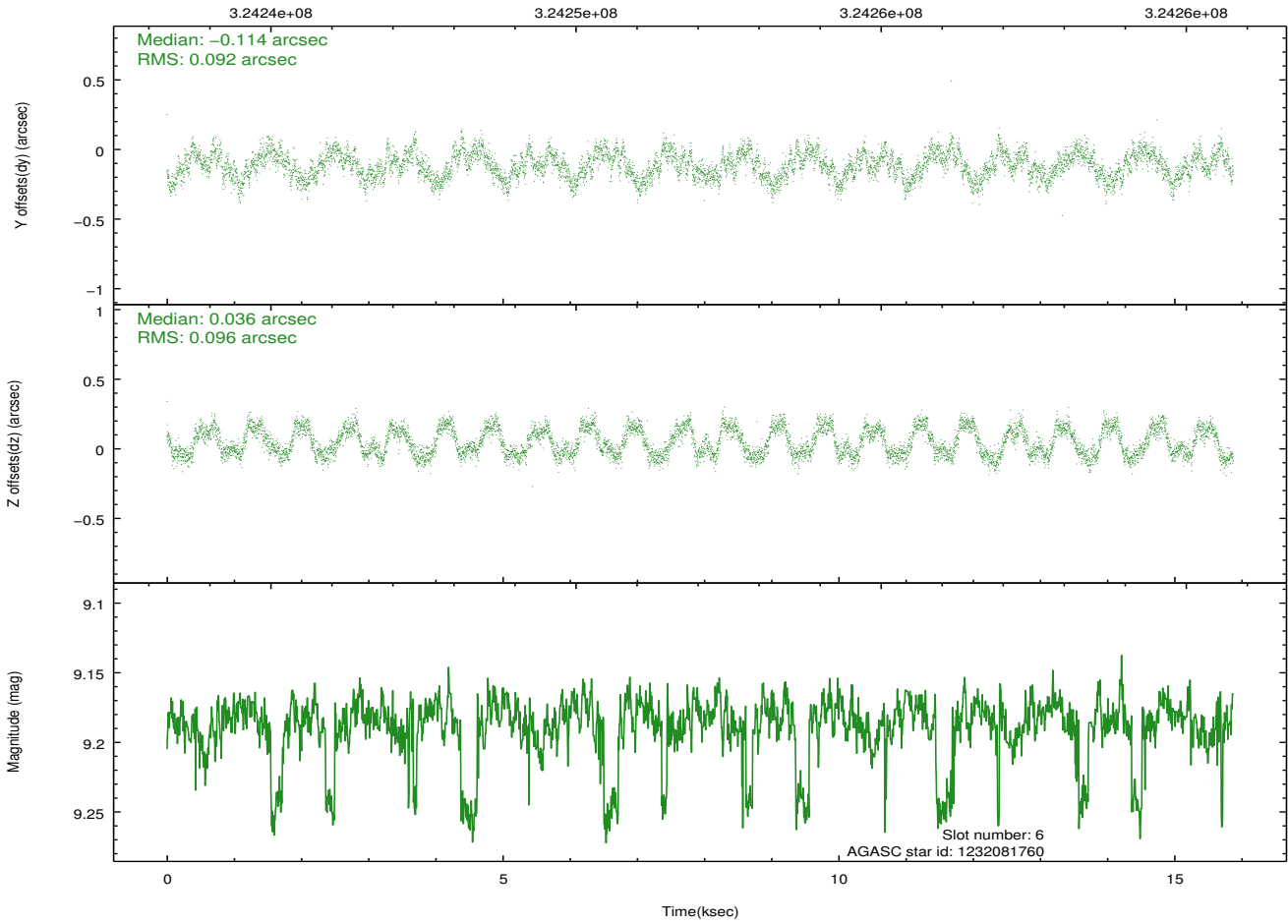
2.4.3 Slot 5



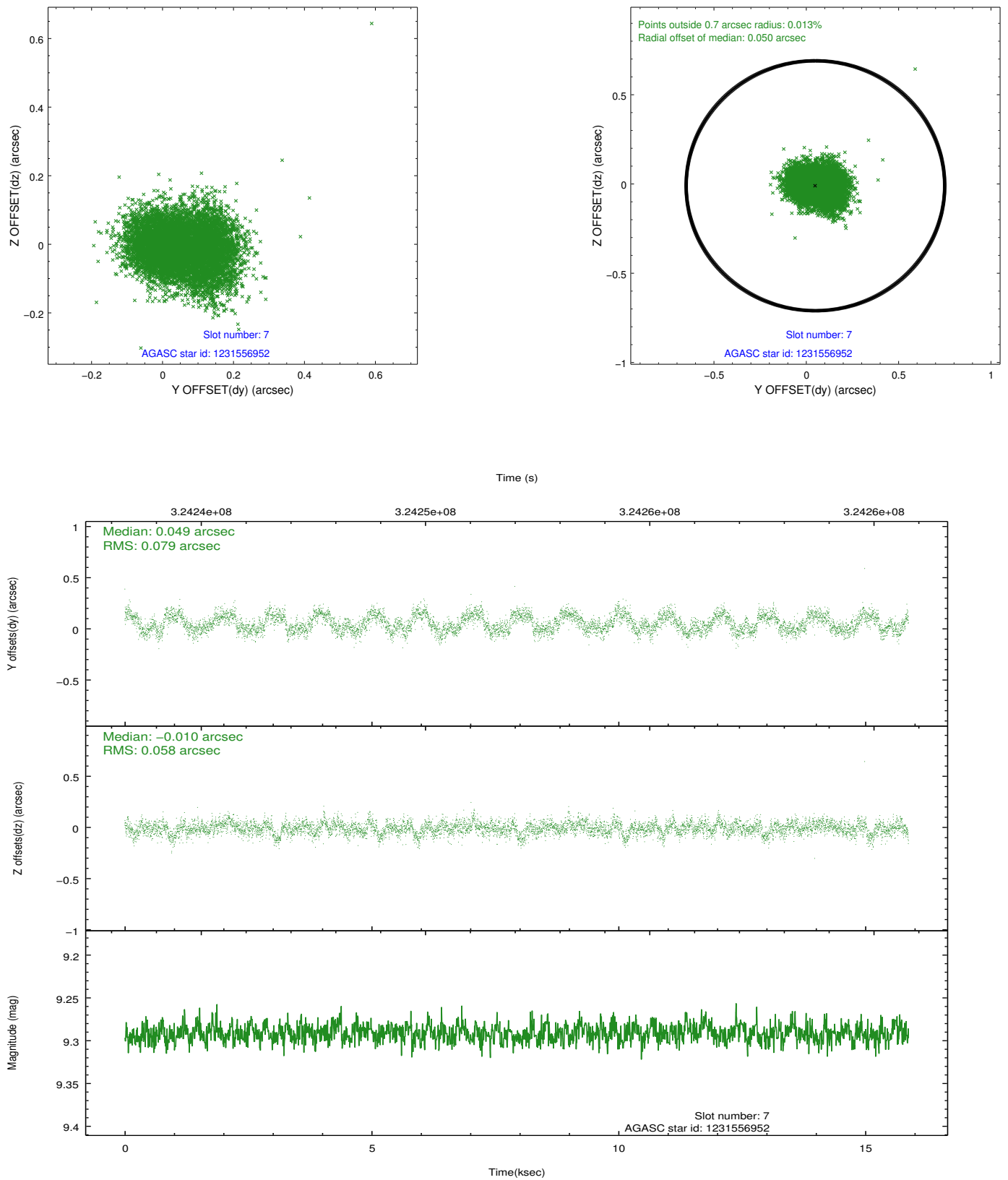
2.4.4 Slot 6



Time (s)

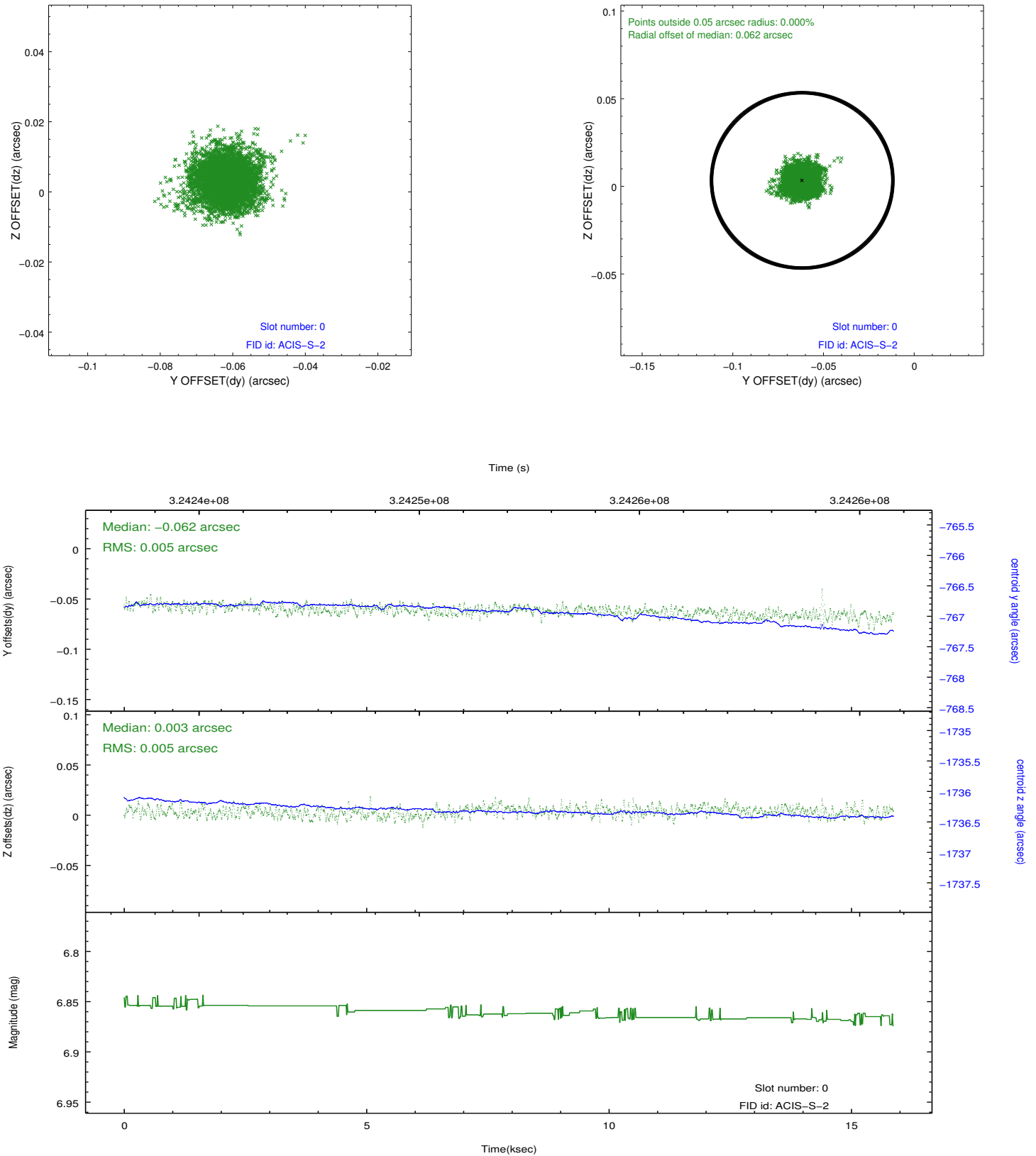


2.4.5 Slot 7

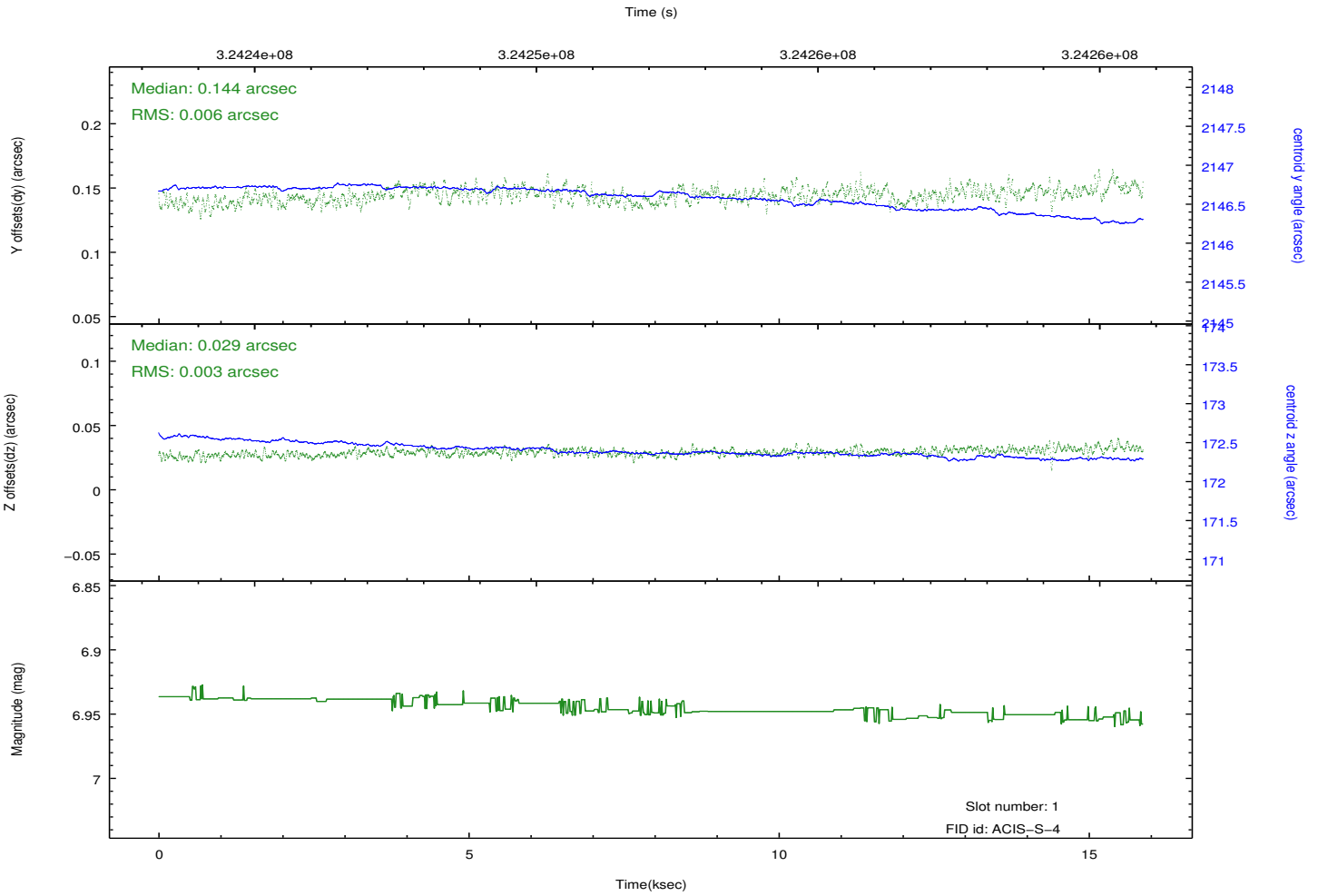
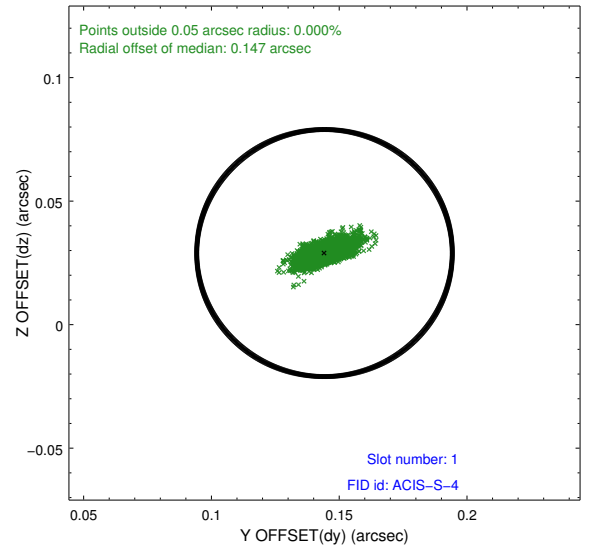
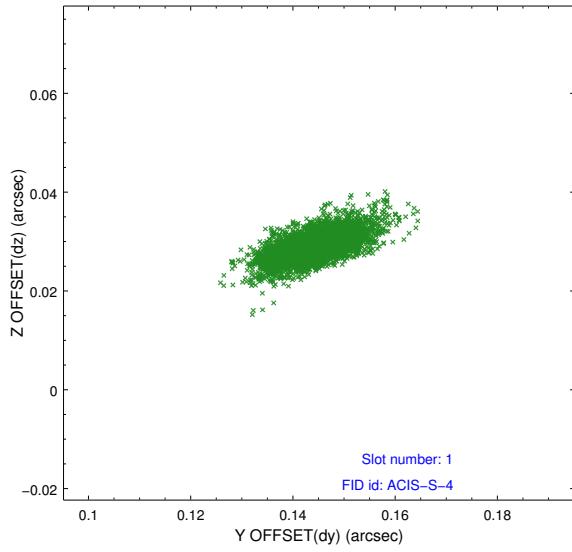


2.5 FID Slots

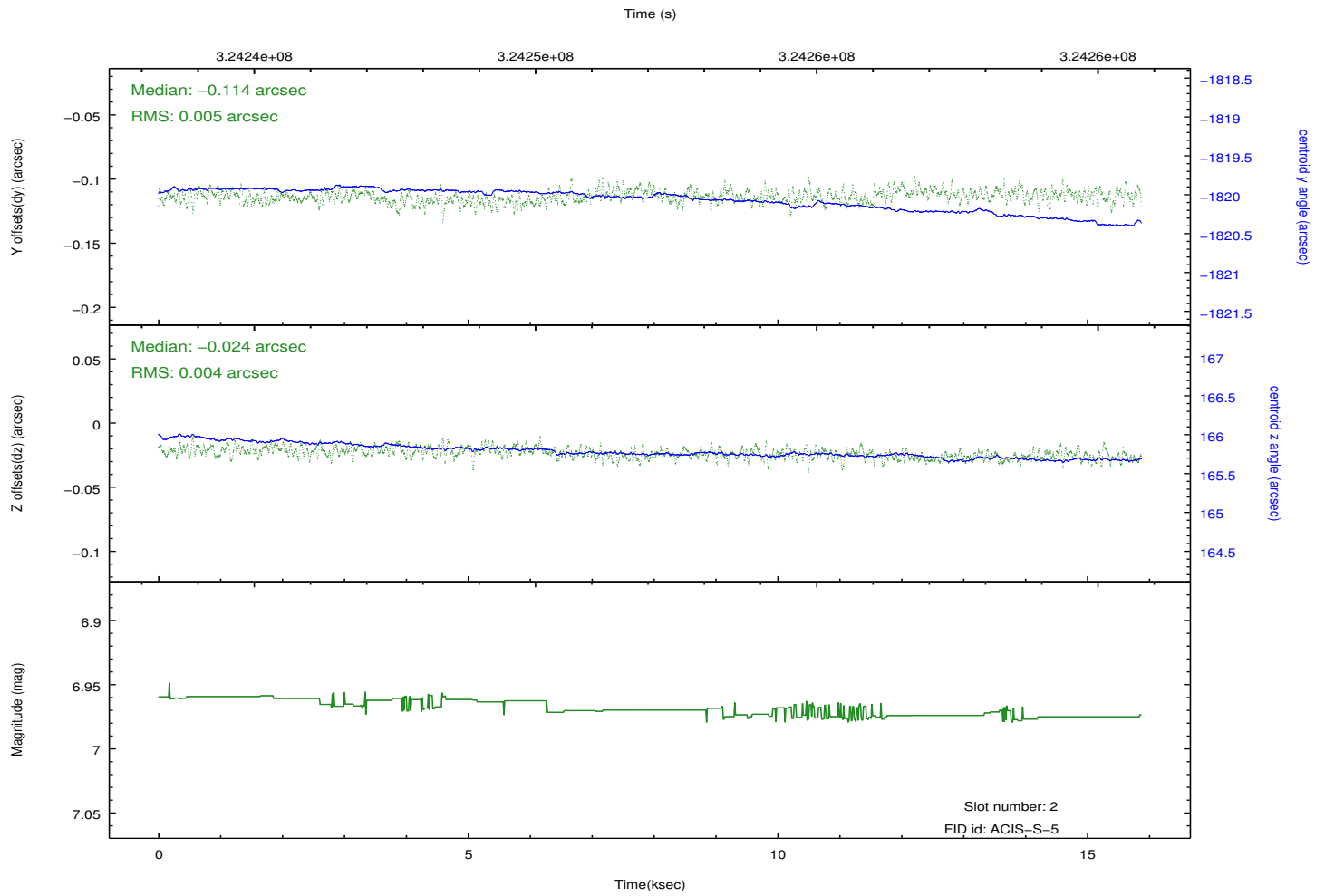
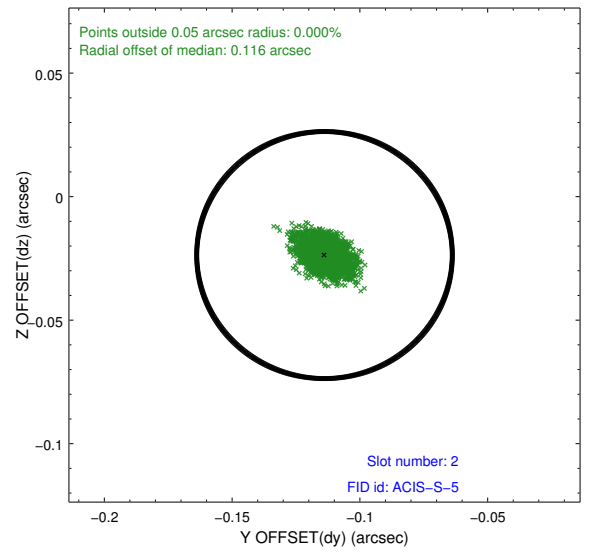
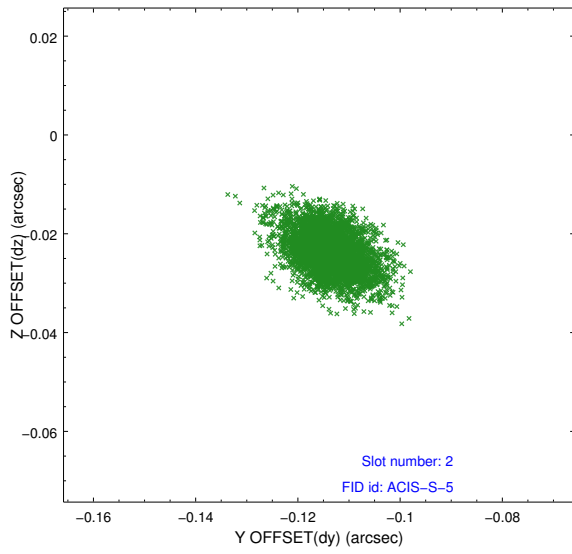
2.5.1 Slot 0



2.5.2 Slot 1



2.5.3 Slot 2



A Summary

A.1 Status

| | |
|----------------------------|------------|
| V&V Scientist | Jen Lauer |
| V&V Date (YYYY-MM-DD) | 2012.05.15 |
| V&V Edition | 1 |
| V&V Disposition and Status | OK |
| V&V Charge Time | 15.5519999 |

A.2 Comments