

V&V Reference Report

L2 ASCDS Version : 8.4.4

Observation 9874 - L2 Version 2
Chandra X-Ray Center

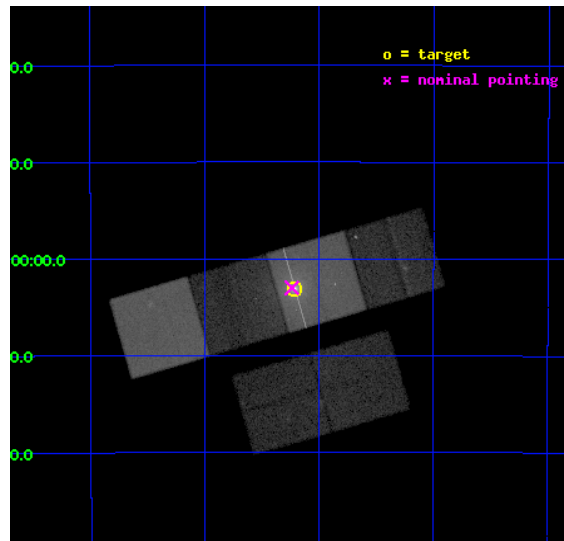
L2 Processing Date : May 17 2012

Contents

1	Front	2
2	OBI	3
2.1	OBI	3
2.1.1	Images	3
2.1.2	Bias	3
2.1.3	Parameters	4
2.1.4	Events	4
2.2	Compared Parameters	5
2.3	Aspect	6
2.4	Star Slots	9
2.4.1	Slot 3	9
2.4.2	Slot 4	10
2.4.3	Slot 5	11
2.4.4	Slot 6	12
2.4.5	Slot 7	13
2.5	FID Slots	14
2.5.1	Slot 0	14
2.5.2	Slot 1	15
2.5.3	Slot 2	16
A	Summary	17
A.1	Status	17
A.2	Comments	17

1 Front

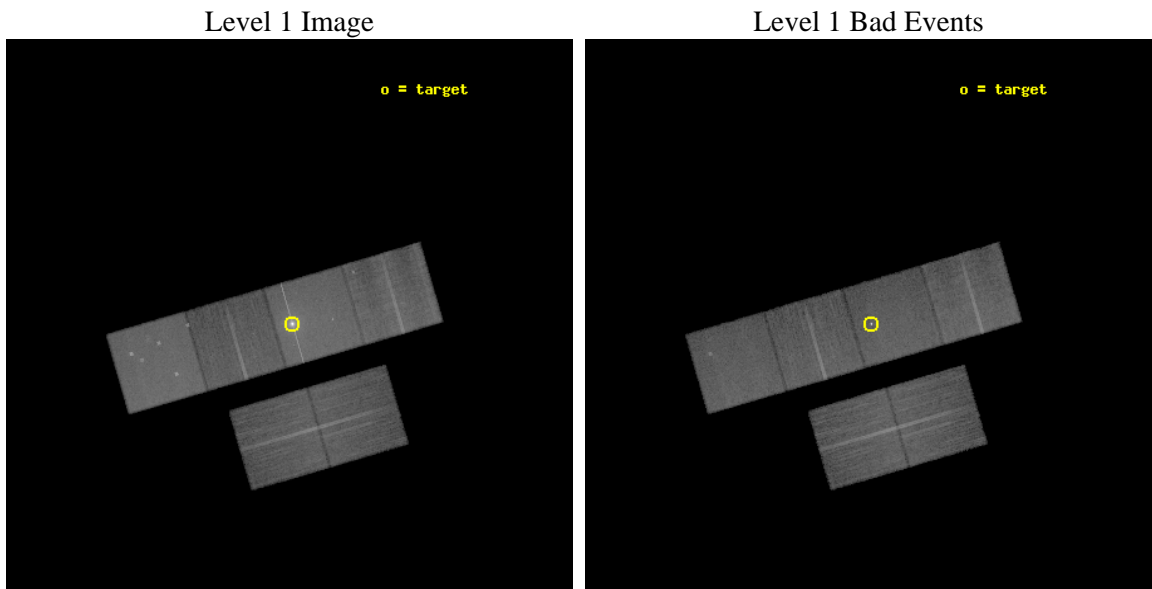
seq_num	300232	Sequence number
obs_id	9874	Observation id
title	A Chandra Legacy Survey of Dynamically Active Globular Clusters	Pr
observer	Prof. David Pooley	Principal investigator
object	NGC 6441	Source name
dtcycle	0	
cycle	P	events from which exps? Prim/Second/Both
ra_targ	267.55375	Observer's specified target RA [deg]
dec_targ	-37.051389	Observer's specified target Dec [deg]
ra_nom	267.55958731472	Nominal RA [deg]
dec_nom	-37.050072692591	Nominal Dec [deg]
roll_nom	343.76015316761	Nominal Roll [deg]
revision	2	Processing version of data
ontime	17180.799936056	Sum of GTIs [s]
livetime	16963.24630223	Livetime [s]
ontime2	17180.799936056	Sum of GTIs [s]
ontime3	17180.799936056	Sum of GTIs [s]
ontime5	17180.799936056	Sum of GTIs [s]
ontime6	17177.558935761	Sum of GTIs [s]
ontime7	17180.799936056	Sum of GTIs [s]
ontime8	17180.799936056	Sum of GTIs [s]
l2events	383728	Number of level 2 events



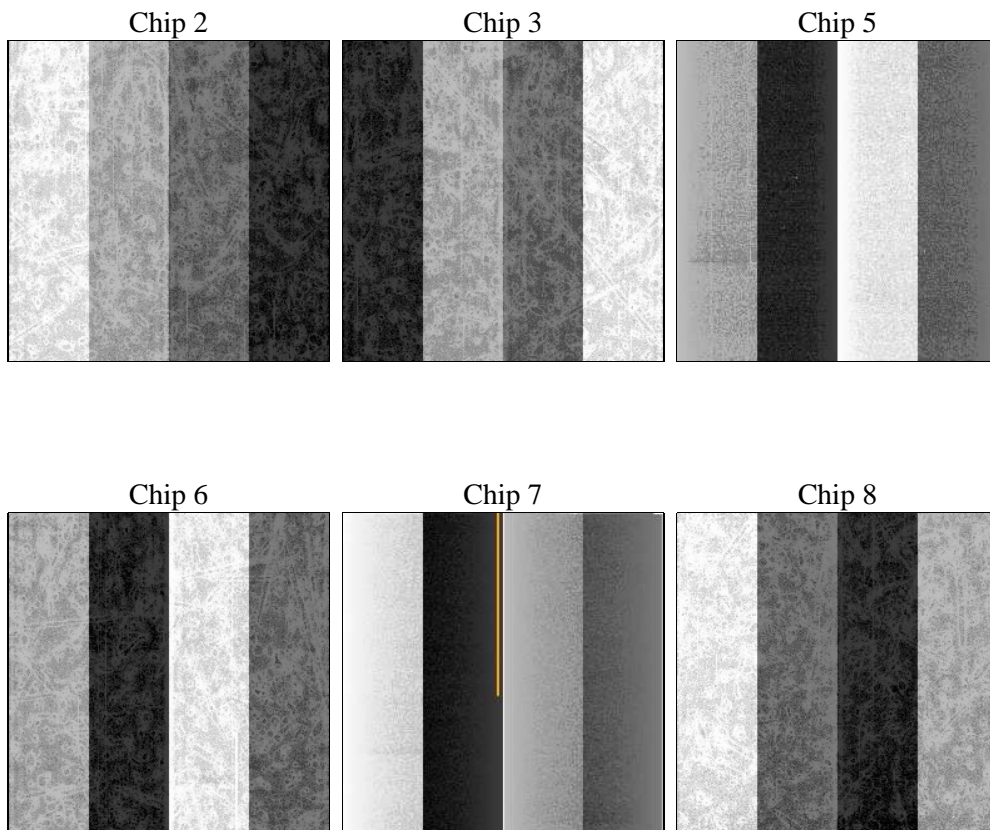
2 OBI

2.1 OBI

2.1.1 Images



2.1.2 Bias



2.1.3 Parameters

obi_num	0	Obi number	sched_exp_time	17000.000000	[s] Scheduled observation exposure time
ascdsver	8.4.4	Processing system revision	ontime	17180.799936056	Sum of GTIs [s]
caldbver	4.4.9	 	ontime2	17180.799936056	Sum of GTIs [s]
date	2012-05-17T02:37:46	Date and time of file creation	ontime3	17180.799936056	Sum of GTIs [s]
revision	2	Processing version of data	ontime5	17180.799936056	Sum of GTIs [s]
			ontime6	17177.558935761	Sum of GTIs [s]
			ontime7	17180.799936056	Sum of GTIs [s]
			ontime8	17180.799936056	Sum of GTIs [s]
			l1events	1317010	Number of level 1 events

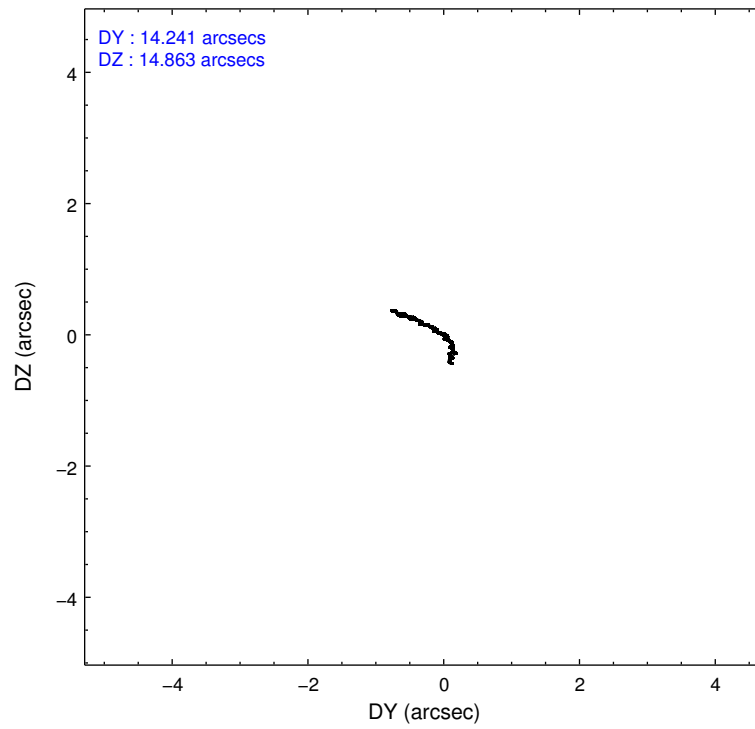
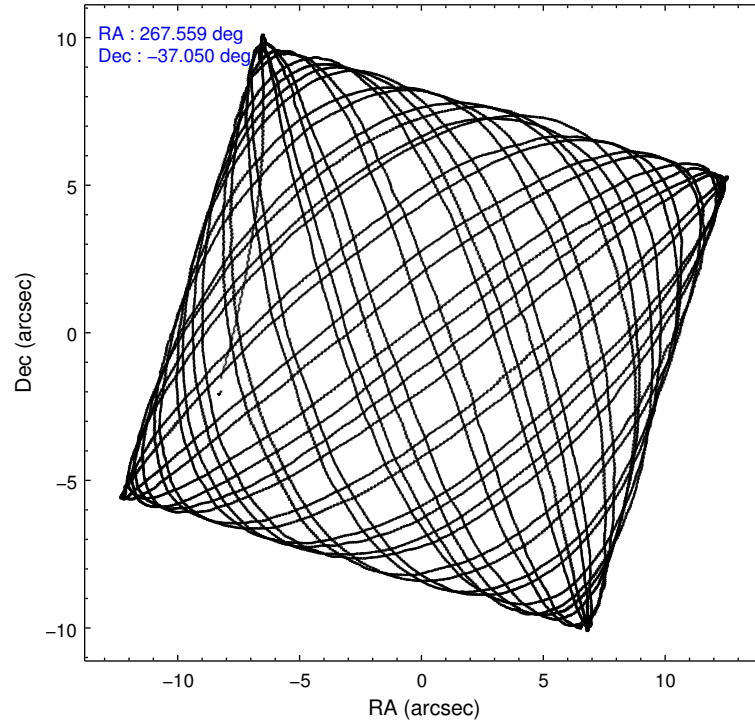
2.1.4 Events

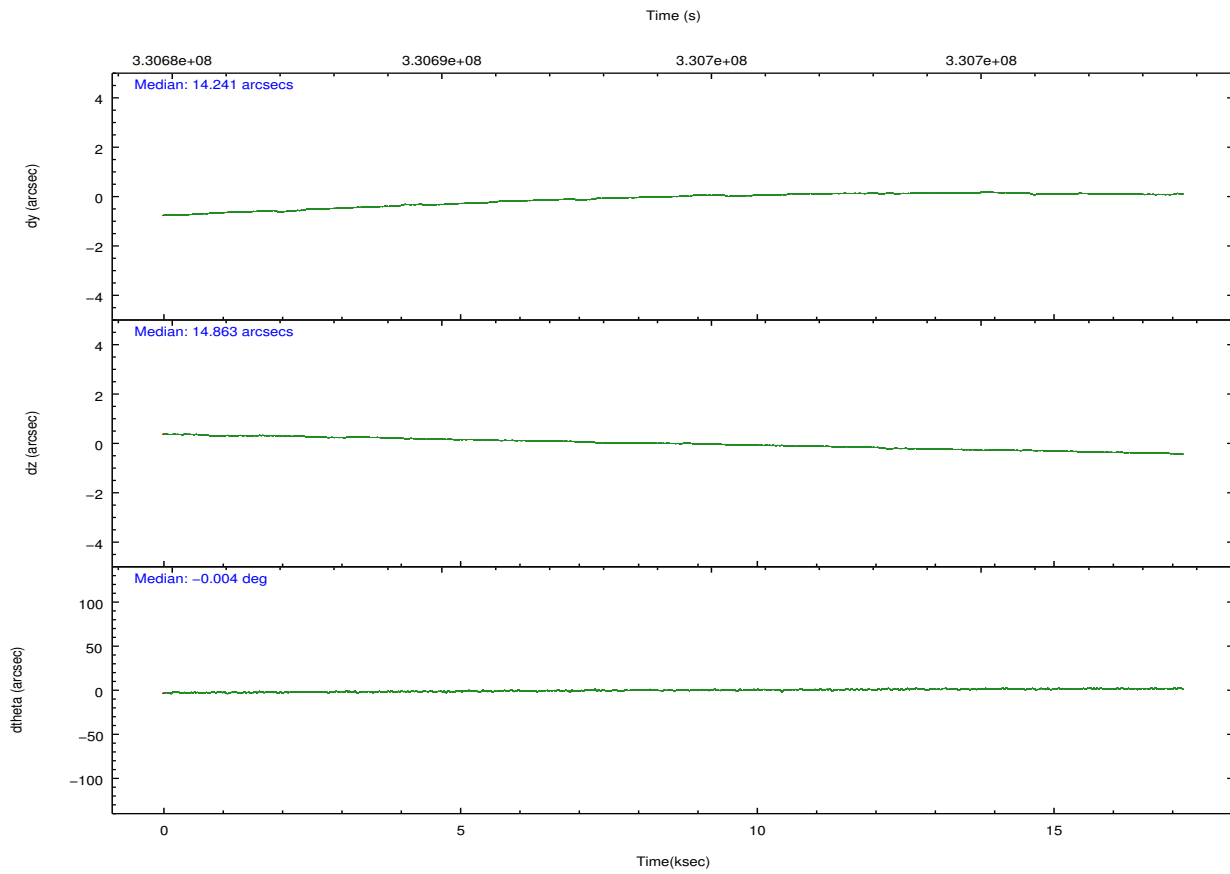
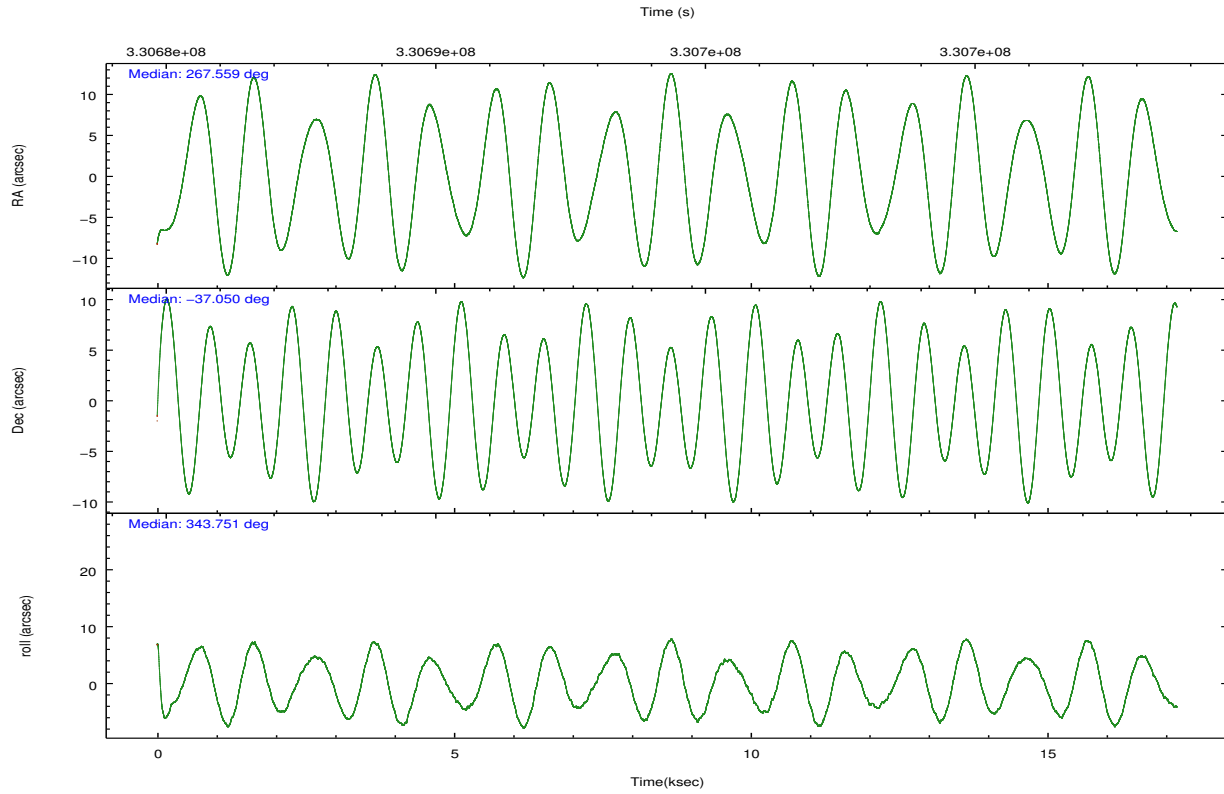
	ccd 2	ccd 3	ccd 5	ccd 6	ccd 7	ccd 8		ccd 2	ccd 3	ccd 5	ccd 6	ccd 7	ccd 8
level 1 events	170947	162584	263282	173756	327326	219115	grade 0 events	10293	10474	12436	14671	28221	18727
rejected events	149032	140711	140620	145084	143412	165484		6%	6%	4%	8%	8%	8%
rejected %	87%	86%	53%	83%	43%	75%	grade 1 events	133	119	445	147	840	165
								0%	0%	0%	0%	0%	0%
							grade 2 events	4420	4072	37468	5396	42066	11477
								2%	2%	14%	3%	12%	5%
							grade 3 events	1872	1949	5027	2129	17977	5502
								1%	1%	1%	1%	5%	2%
							grade 4 events	1867	1985	4278	2087	17624	5102
								1%	1%	1%	1%	5%	2%
							grade 5 events	6639	7632	18568	7832	24148	10613
								3%	4%	7%	4%	7%	4%
							grade 6 events	3520	3444	63759	4454	78451	12957
								2%	2%	24%	2%	23%	5%
							grade 7 events	142203	132909	121301	137040	117999	154572
								83%	81%	46%	78%	36%	70%

2.2 Compared Parameters

Parameter	Planned	Actual	Parameter	Planned	Actual
Instrument	ACIS	ACIS	Obspar format version number	7	7
Detector	ACIS-235678	ACIS-235678	Obspar file type	PREDICTED	ACTUAL
Grating	NONE	NONE	Obspar update status	NONE	UPDATED
Data mode	FAINT	FAINT	CCD I0 on	N	N
Observation mode	POINTING	POINTING	CCD I1 on	N	N
[deg] Pointing RA	267.526444	267.559587314725	CCD I2 on	O1	Y
[deg] Pointing Dec	-37.056958	-37.05007269259117	CCD I3 on	O2	Y
[deg] Pointing Roll	343.583543	343.7601531676086	CCD S0 on	N	N
[mm] SIM focus pos	-0.684267	-0.6828225247311905	CCD S1 on	Y	Y
[mm] SIM defocus	0	0.001444936568705701	CCD S2 on	Y	Y
[mm] SIM translation stage pos	-190.132523	-190.1425803651734	CCD S3 on	Y	Y
[mm] SIM translation stage offset	0	0.01005778216563158	CCD S4 on	Y	Y
[s] Observation start time (MET)	330685869.184000	330684776.22757	CCD S5 on	N	N
Observation start date	2008-06-24T09:10:04	2008-06-24T08:52:56	Number of optional ACIS chips dropped	0	0
[s] Observation end time (MET)	330702869.184000	330703533.72848	On-chip summing requested	N	N
Observation end date	2008-06-24T13:53:24	2008-06-24T14:05:33	Subarray requested	NONE	NONE
Read mode	TIMED	TIMED	Alternating exposures requested	N	N
			[s] Primary exposure time	0.000000	3.2

2.3 Aspect



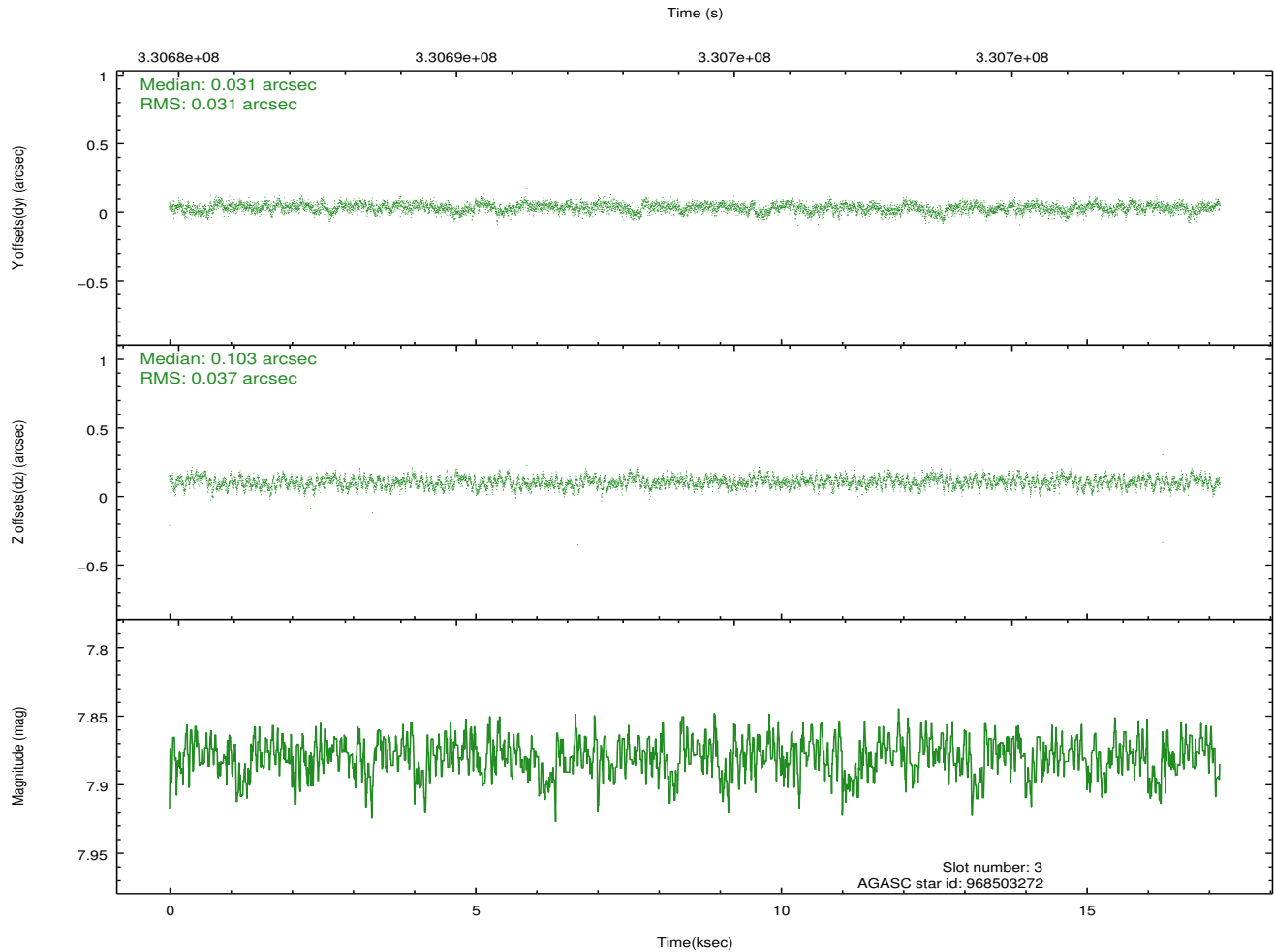
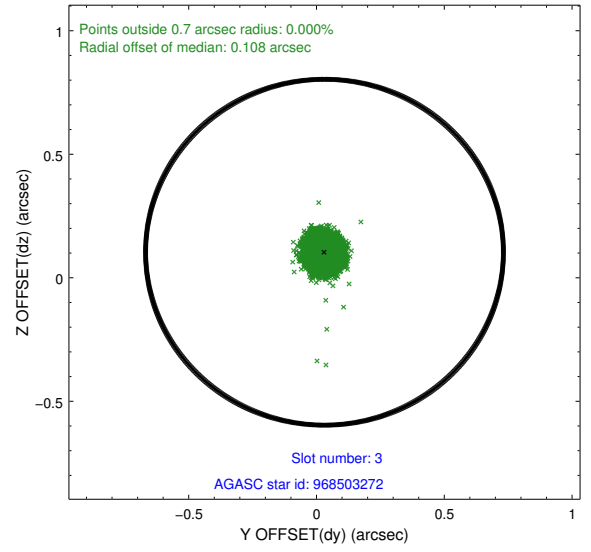
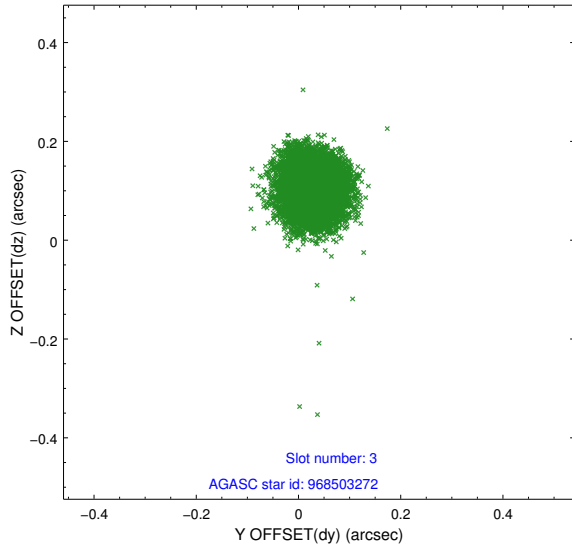


Slot Statistics

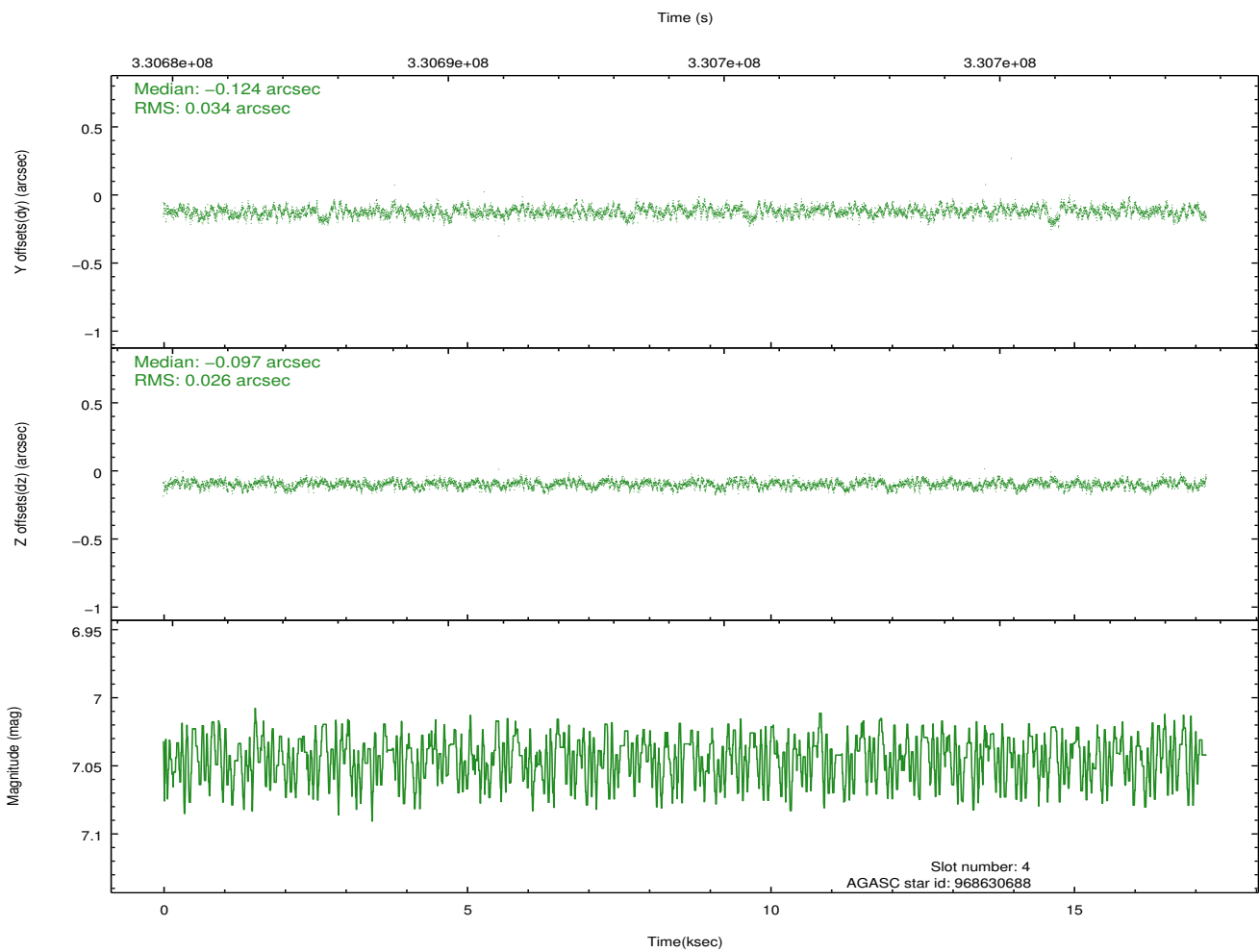
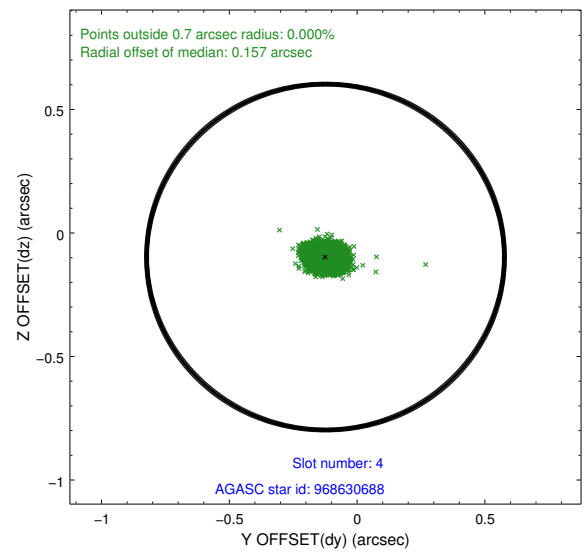
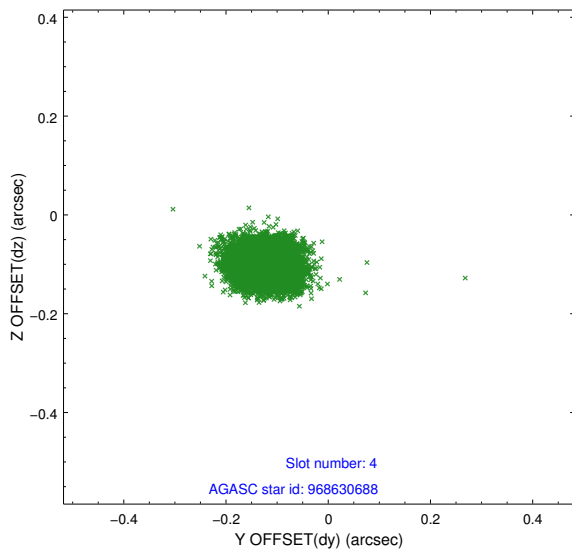
slot	status	id	mag	n_pts	med_dy	med_dz	dr1	dr2	ra	dec	mean_y	mean_z
0	FID	ACIS-S-2	6.87	4191	-0.013	-0.009	0.007	0.013	0.000000	0.000000	-767.07	-1736.19
1	FID	ACIS-S-5	6.99	4192	-0.085	-0.018	0.007	0.012	0.000000	0.000000	-1820.37	165.52
2	FID	ACIS-S-6	7.08	4192	0.073	0.034	0.007	0.014	0.000000	0.000000	394.36	809.76
3	GUIDE	968503272	7.88	8383	0.031	0.103	0.052	0.083	267.353683	-36.565699	-978.73	1554.73
4	GUIDE	968630688	7.04	8384	-0.124	-0.097	0.045	0.074	268.313872	-37.080057	2195.67	550.69
5	GUIDE	968496800	7.56	8376	0.067	0.073	0.054	0.087	267.208106	-37.412075	-510.51	-1485.02
6	GUIDE	968641112	7.16	8382	-0.024	-0.173	0.066	0.115	267.924934	-36.467732	507.72	2358.09
7	GUIDE	1033645360	8.11	8380	0.051	0.085	0.070	0.111	267.815704	-37.809705	1556.33	-2367.58

2.4 Star Slots

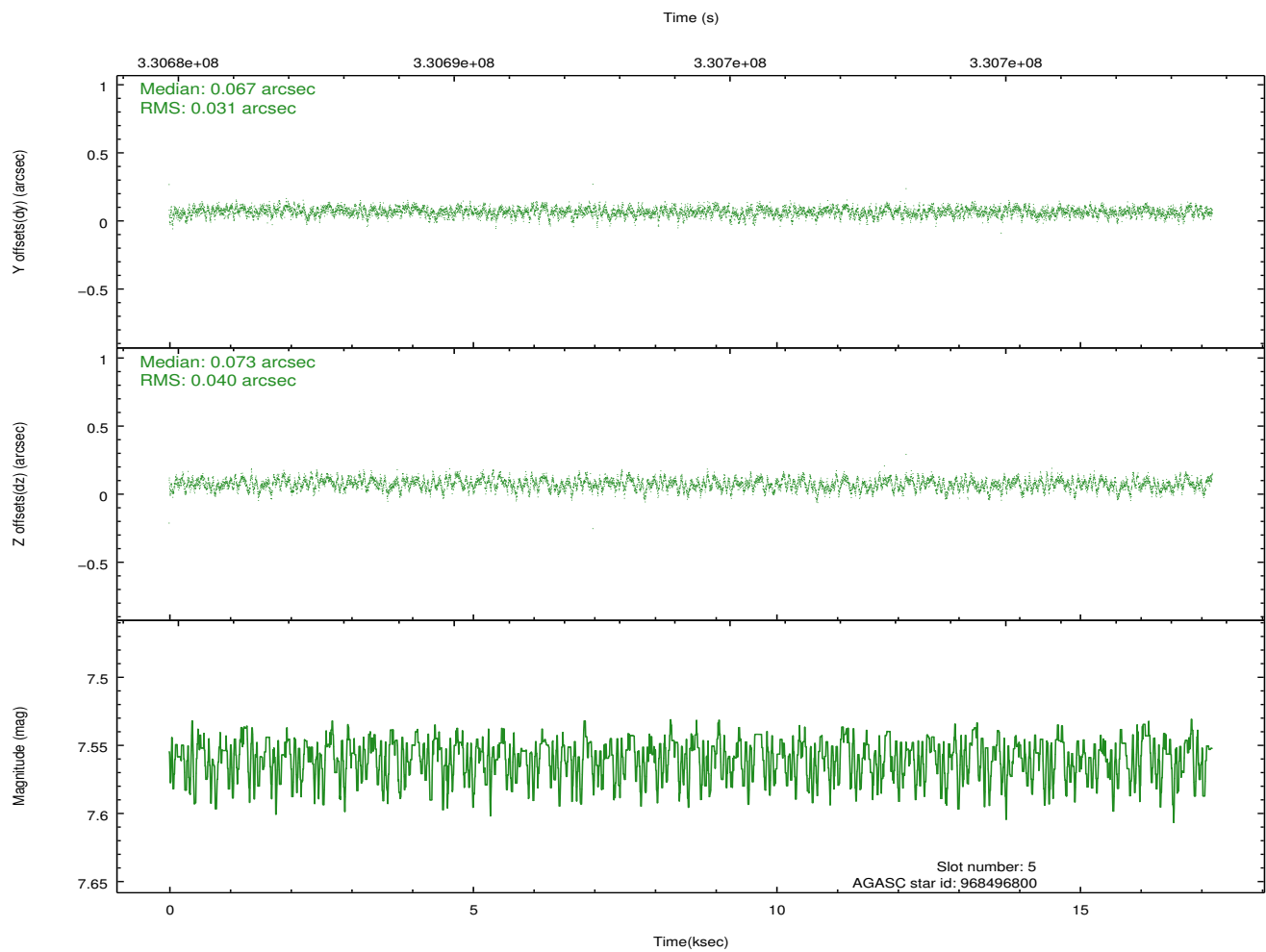
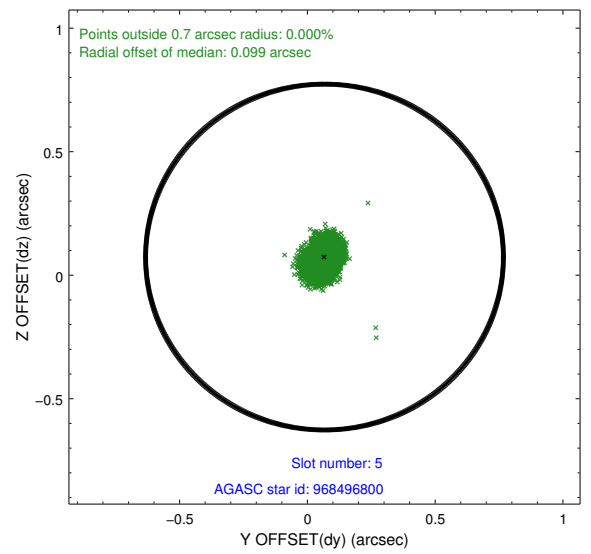
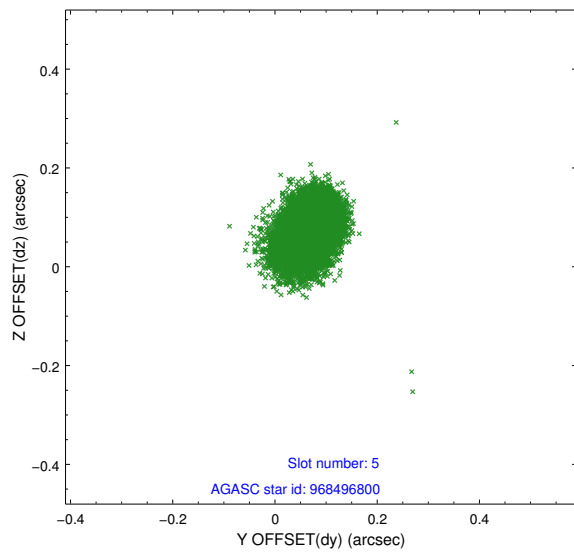
2.4.1 Slot 3



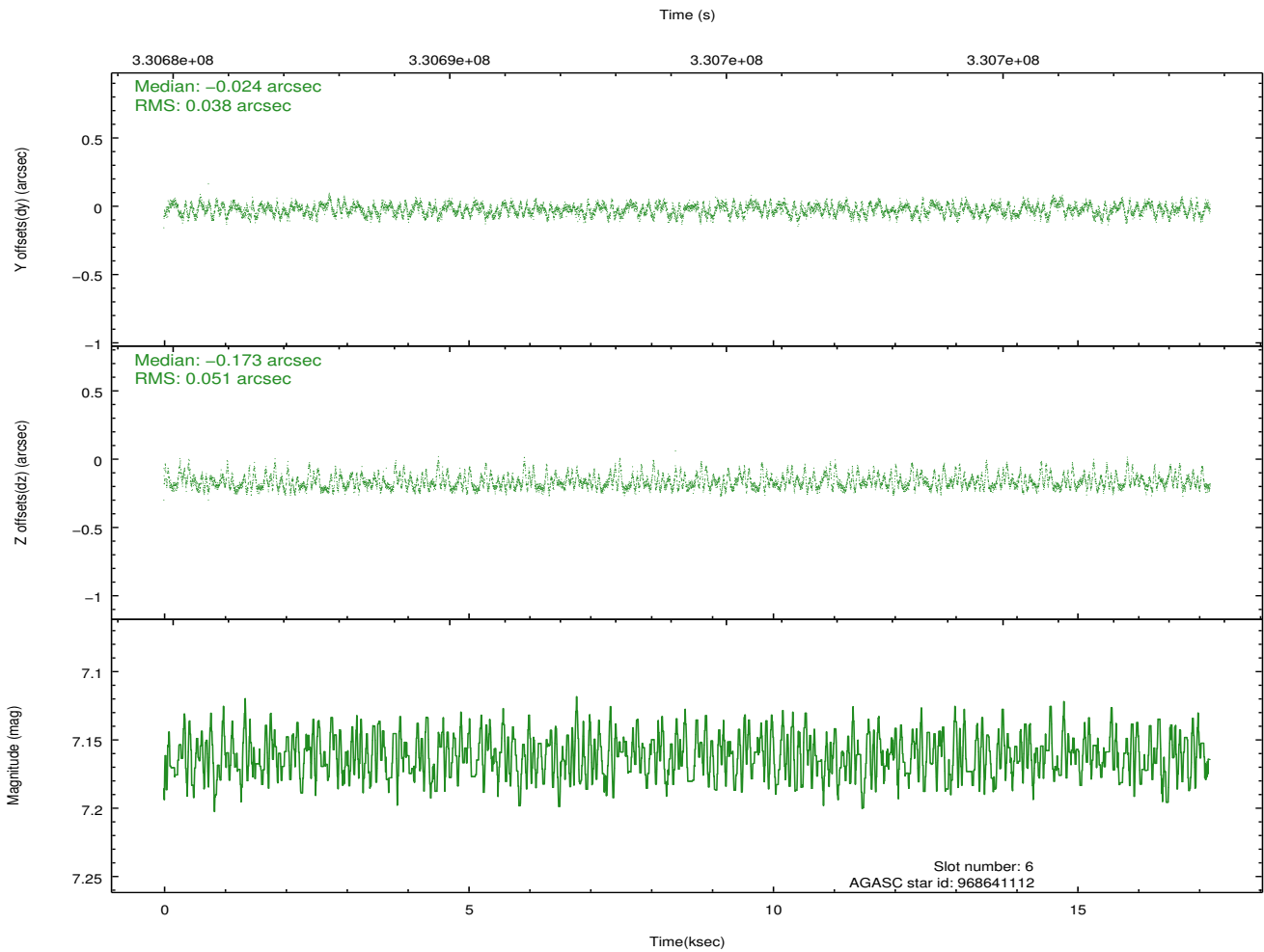
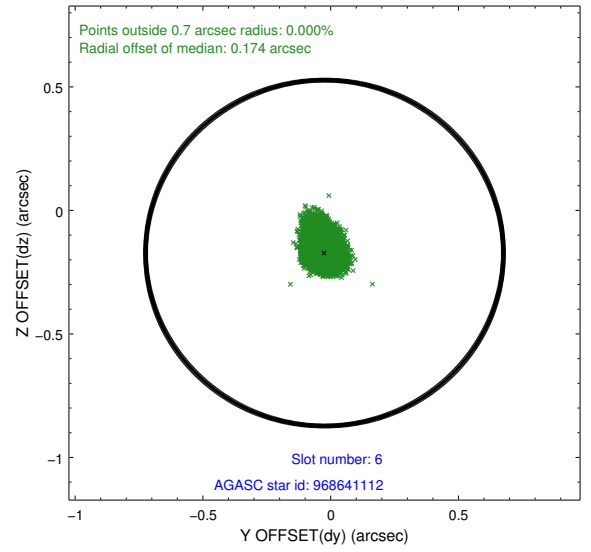
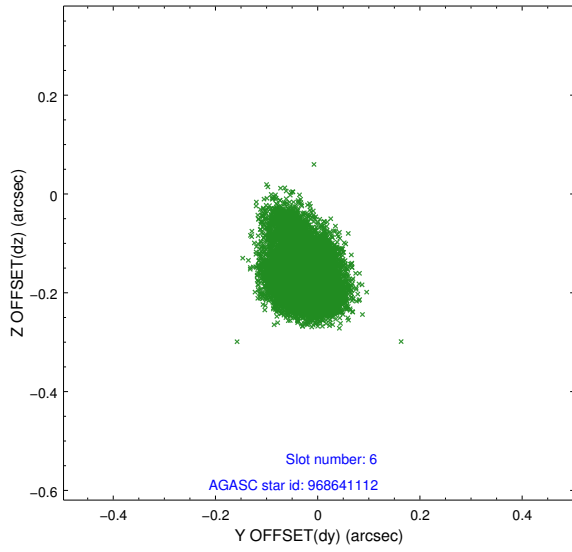
2.4.2 Slot 4



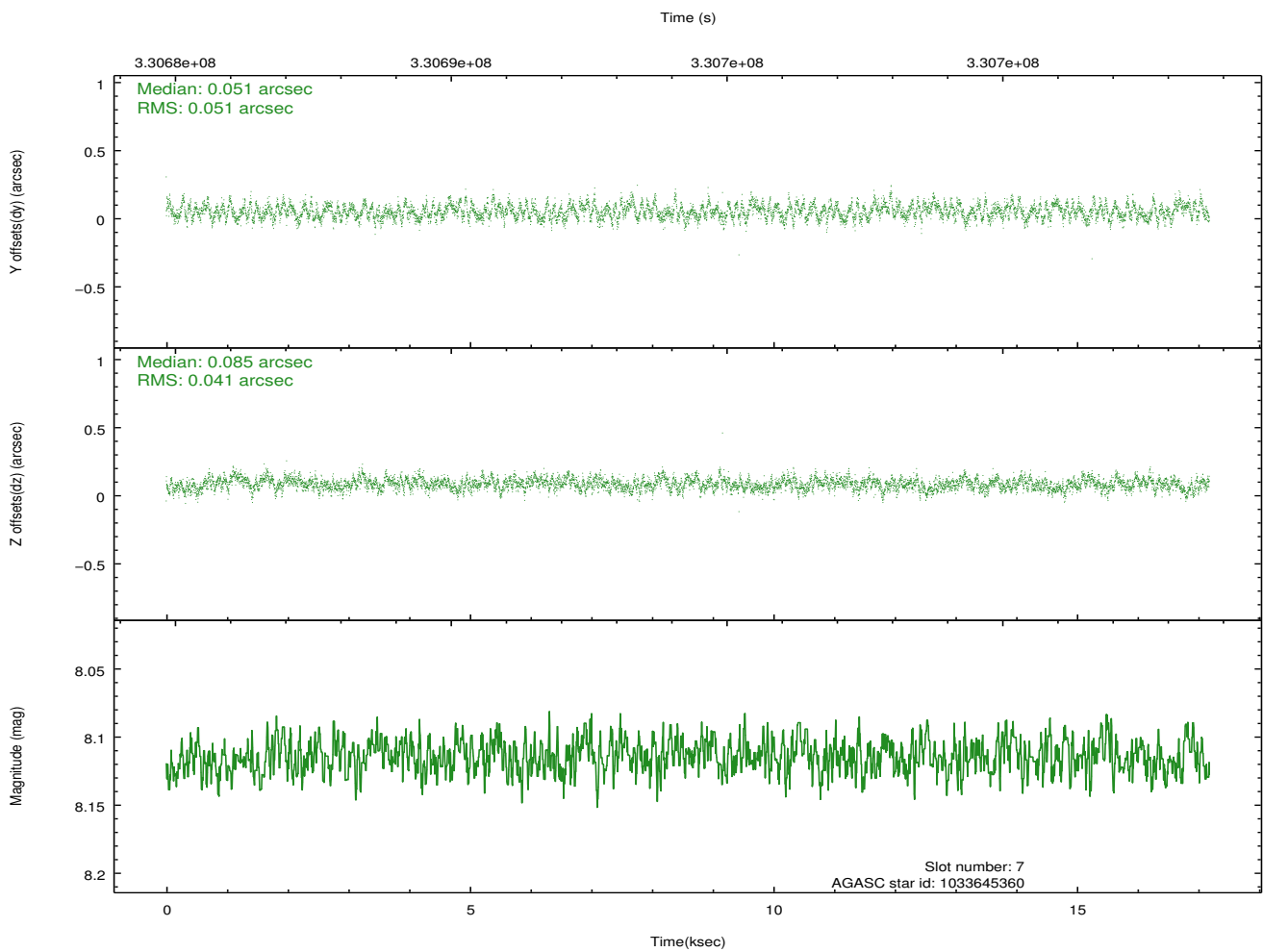
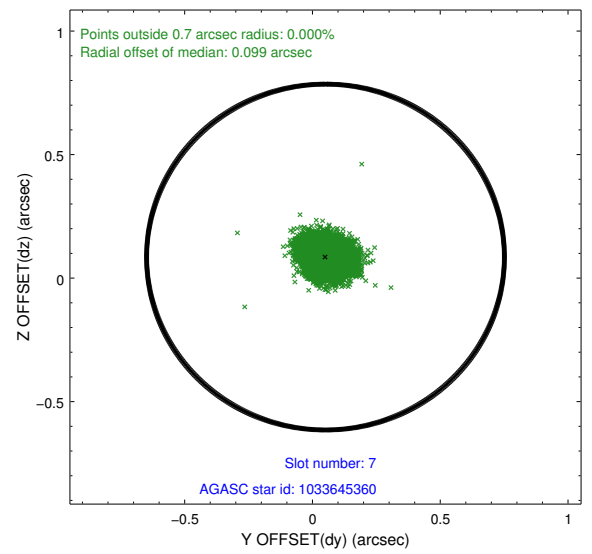
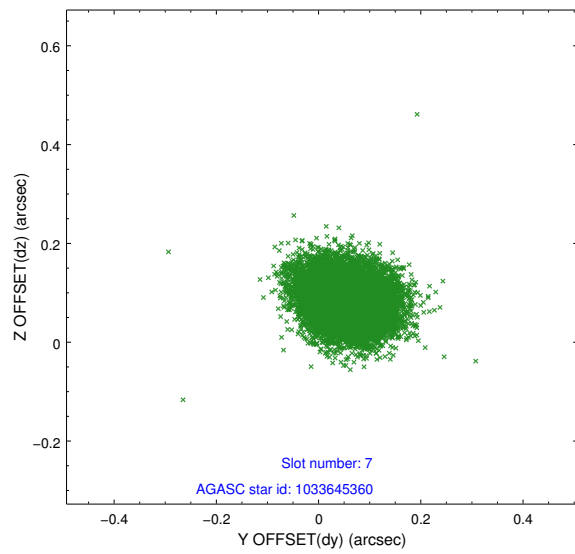
2.4.3 Slot 5



2.4.4 Slot 6

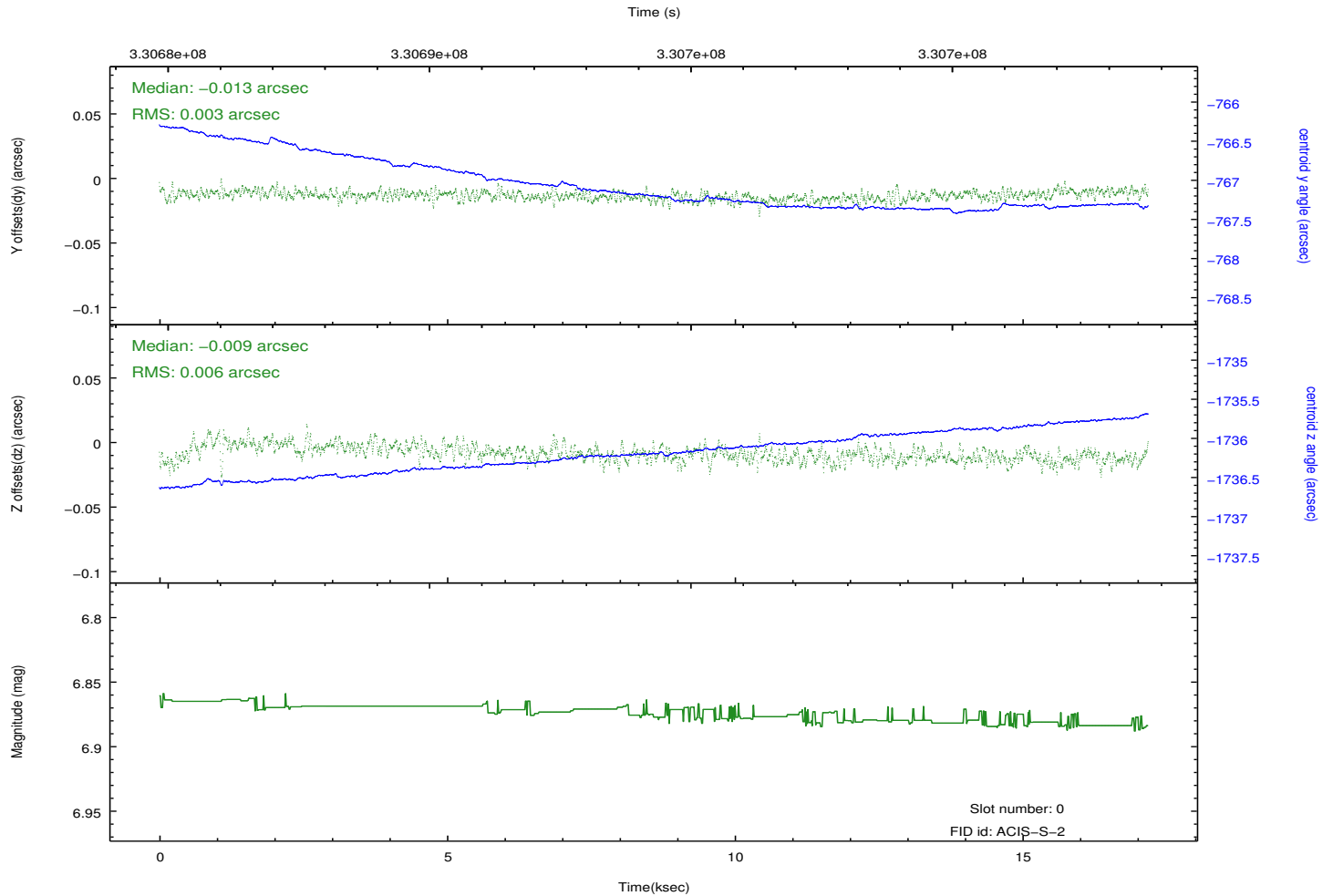
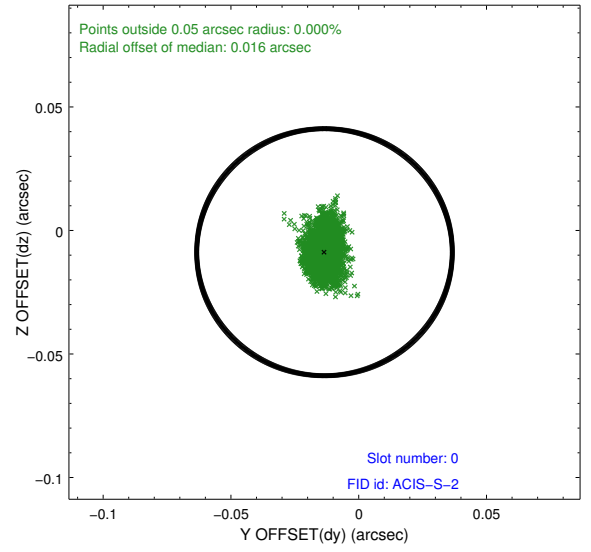
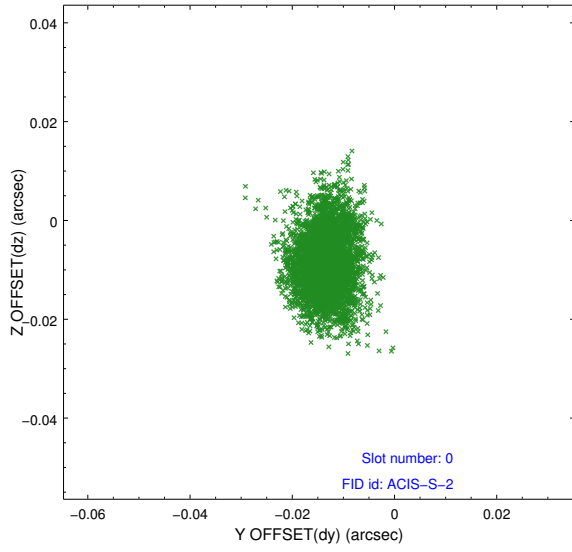


2.4.5 Slot 7

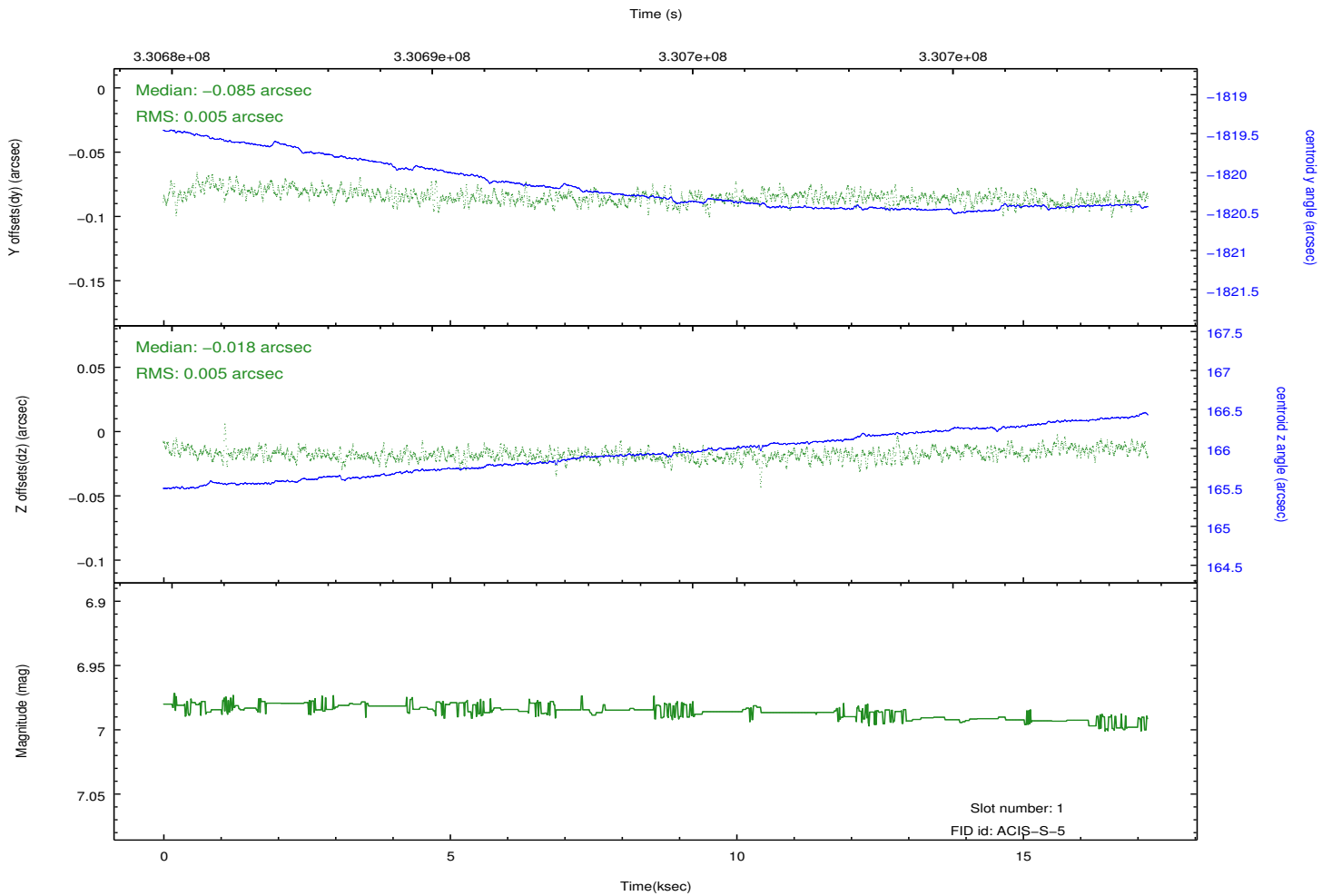
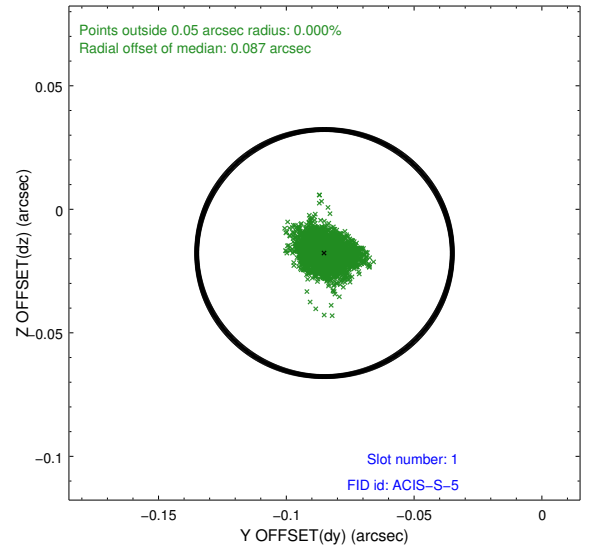
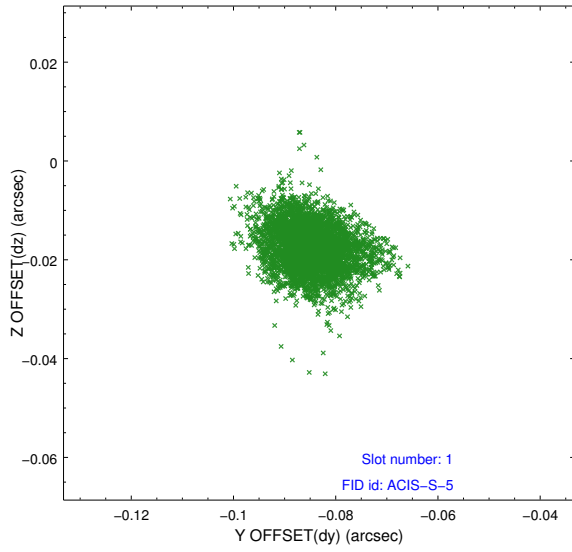


2.5 FID Slots

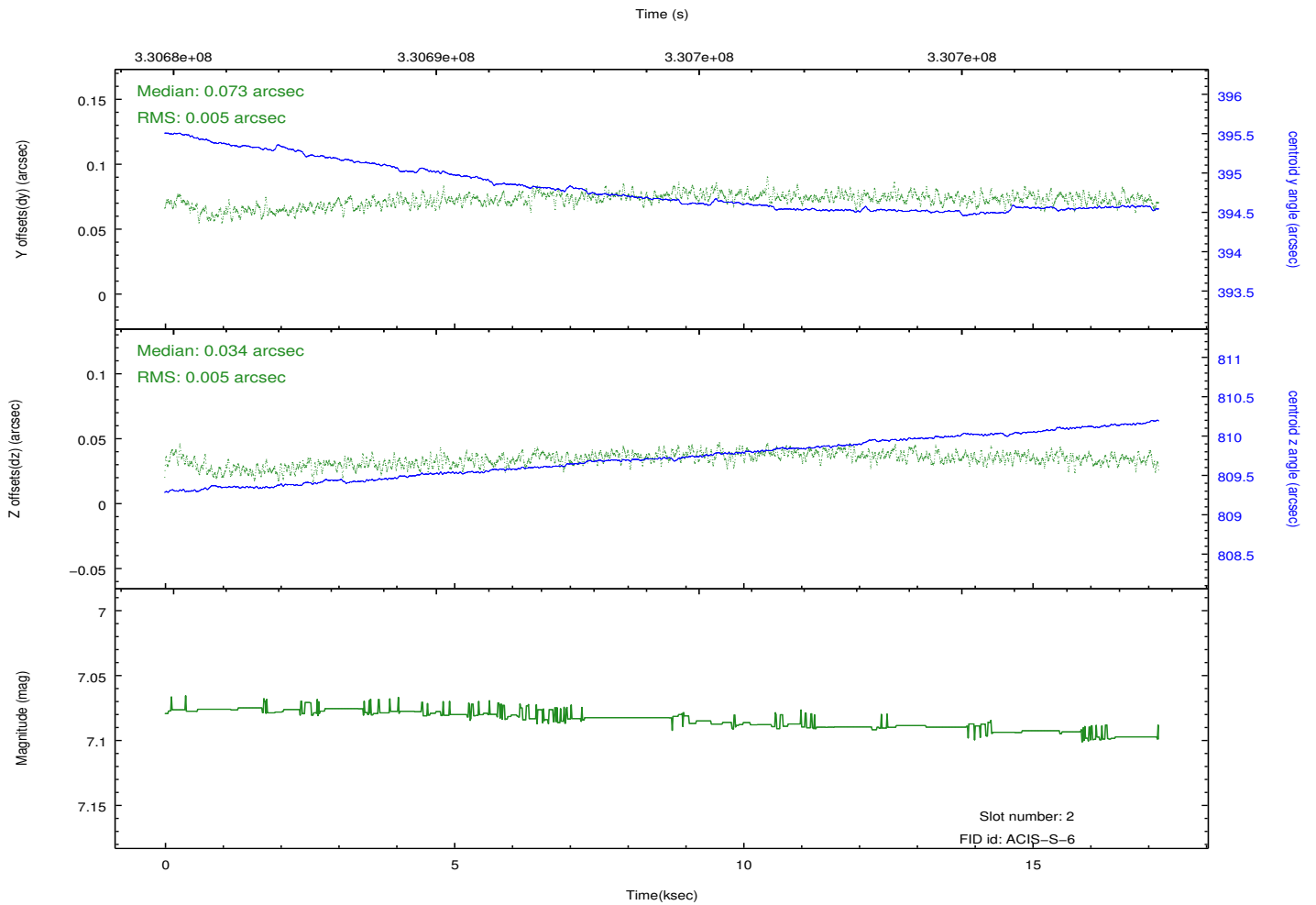
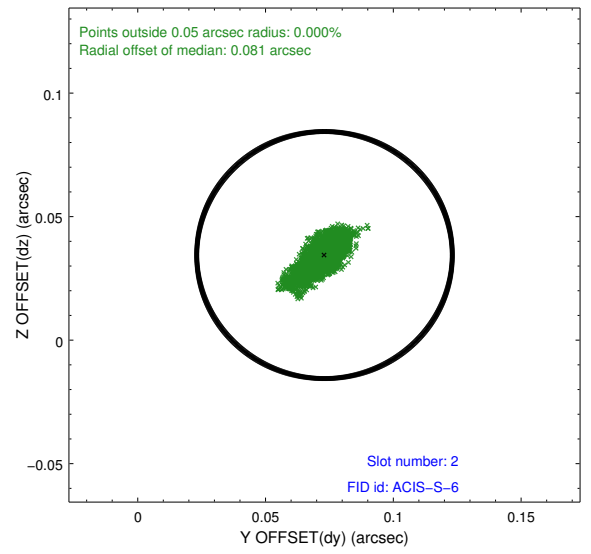
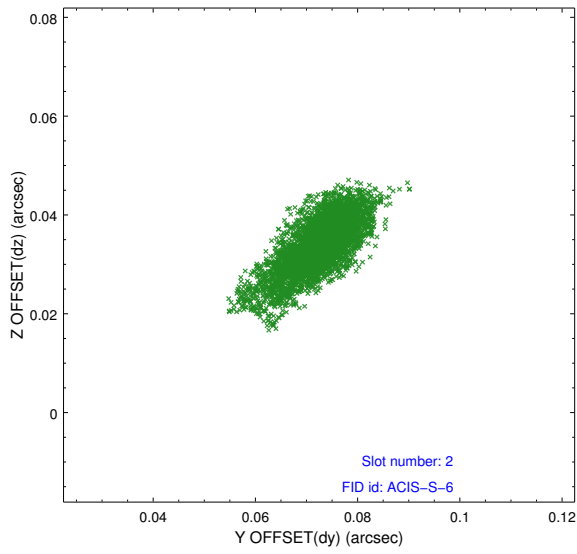
2.5.1 Slot 0



2.5.2 Slot 1



2.5.3 Slot 2



A Summary

A.1 Status

V&V Scientist	Jen Lauer
V&V Date (YYYY-MM-DD)	2012.05.22
V&V Edition	1
V&V Disposition and Status	OK
V&V Charge Time	17.1807999

A.2 Comments