

V&V Reference Report

L2 ASCDS Version : 8.4.4

Observation 10795 - L2 Version 3
Chandra X-Ray Center

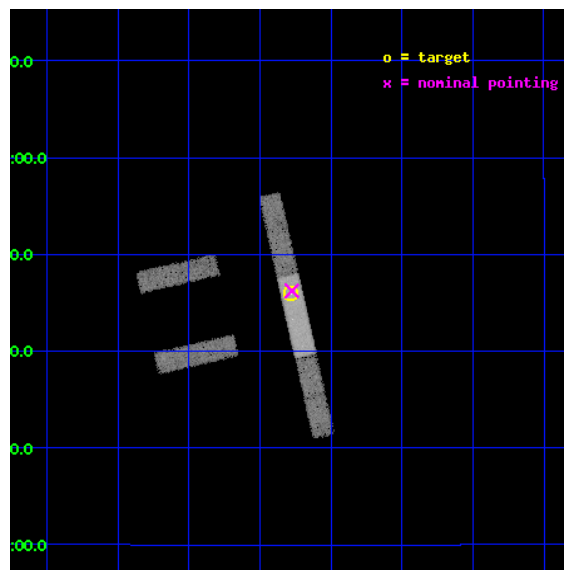
L2 Processing Date : Jun 15 2012

Contents

1	Front	2
2	OBI	3
2.1	OBI	3
2.1.1	Images	3
2.1.2	Bias	3
2.1.3	Parameters	4
2.1.4	Events	4
2.2	Compared Parameters	5
2.3	Aspect	6
2.4	Star Slots	9
2.4.1	Slot 3	9
2.4.2	Slot 4	10
2.4.3	Slot 6	11
2.4.4	Slot 7	12
2.5	FID Slots	13
2.5.1	Slot 0	13
2.5.2	Slot 1	14
2.5.3	Slot 2	15
A	Summary	16
A.1	Status	16
A.2	Comments	16

1 Front

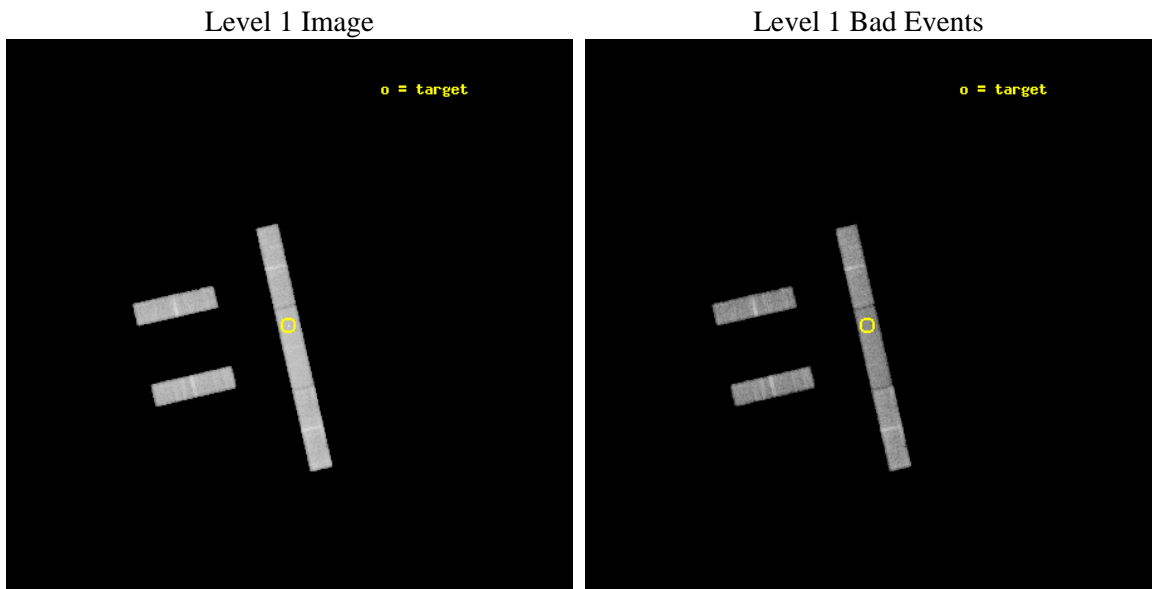
seq_num	701960	Sequence number
obs_id	10795	Observation id
title	Studying the Optical and X-ray Emission Regions of Quasar PG 1115+080 by Monitoring Microlensing Events	Proposal title
observer	Professor Gordon Garmire	Principal investigator
object	PG 1115+080	Source name
dtcycle	0	
cycle	P	events from which exps? Prim/Second/Both
ra_targ	169.570417	Observer's specified target RA [deg]
dec_targ	7.766111	Observer's specified target Dec [deg]
ra_nom	169.5688426369	Nominal RA [deg]
dec_nom	7.7706809889261	Nominal Dec [deg]
roll_nom	77.156816138009	Nominal Roll [deg]
revision	3	Processing version of data
ontime	15142.0	Sum of GTIs [s]
liveltime	14545.070314301	Livetime [s]
ontime2	15142.0	Sum of GTIs [s]
ontime3	15142.0	Sum of GTIs [s]
ontime6	15142.0	Sum of GTIs [s]
ontime7	15142.0	Sum of GTIs [s]
ontime8	15139.917929828	Sum of GTIs [s]
l2events	43657	Number of level 2 events



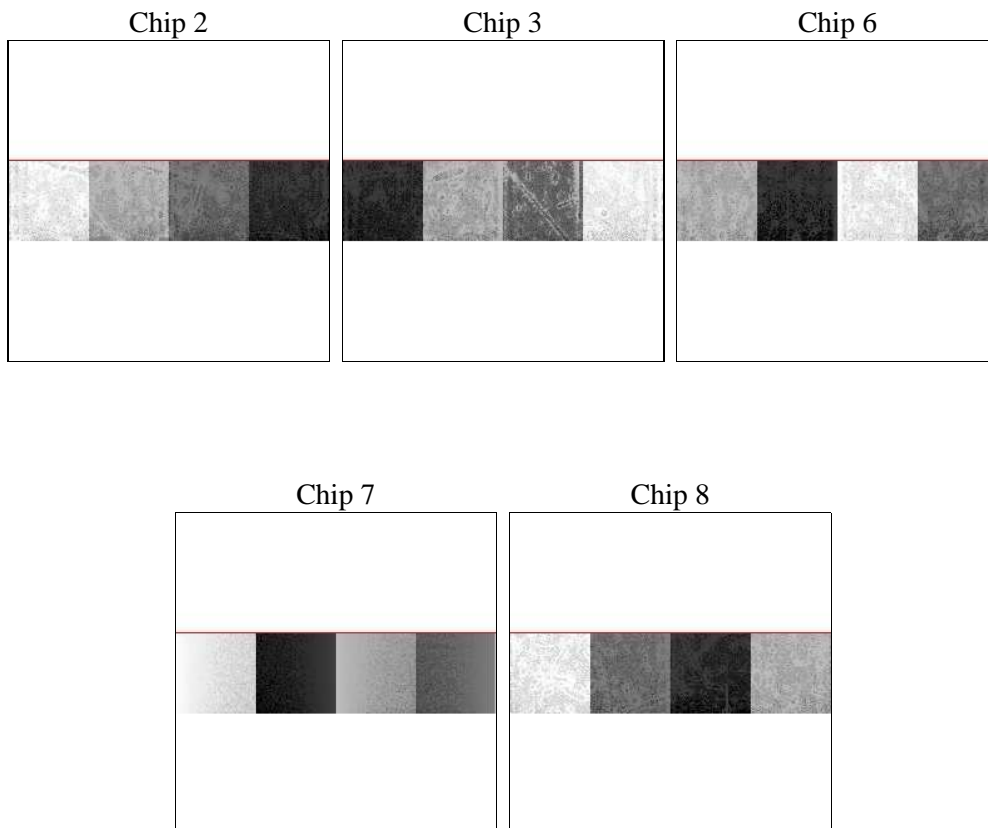
2 OBI

2.1 OBI

2.1.1 Images



2.1.2 Bias



2.1.3 Parameters

obi_num	0	Obi number	sched_exp_time	15000.000000	[s] Scheduled observation exposure time
ascdsver	8.4.5	Processing system revision	ontime	15142.0	Sum of GTIs [s]
caldbver	4.4.10	 	ontime2	15142.0	Sum of GTIs [s]
date	2012-06-15T14:47:29	Date and time of file creation	ontime3	15142.0	Sum of GTIs [s]
revision	3	Processing version of data	ontime6	15142.0	Sum of GTIs [s]
			ontime7	15142.0	Sum of GTIs [s]
			ontime8	15139.917929828	Sum of GTIs [s]
			l1events	274640	Number of level 1 events

2.1.4 Events

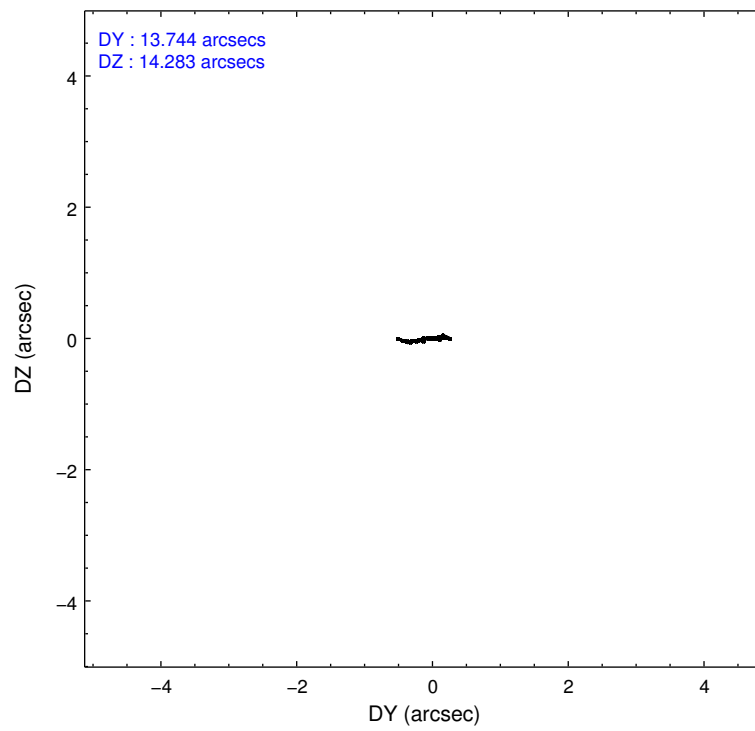
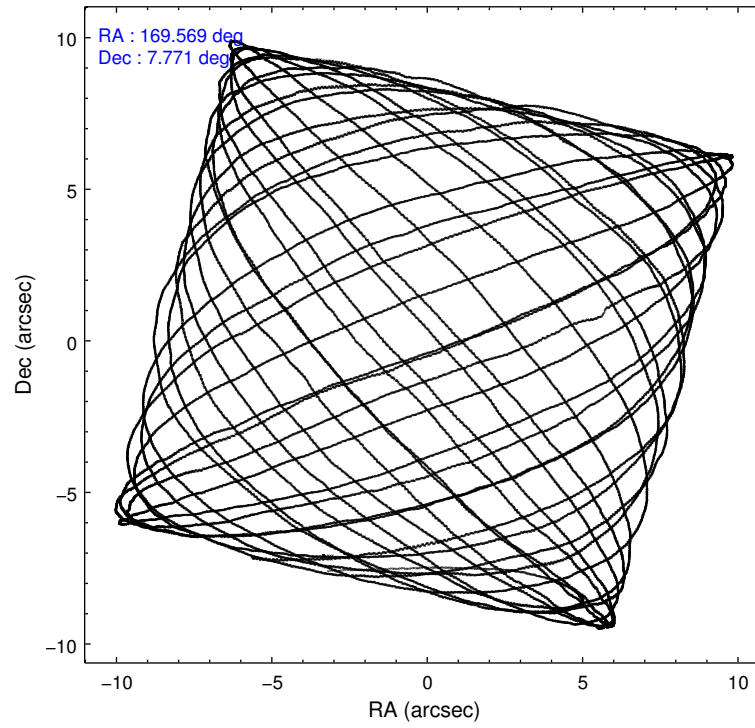
	ccd 2	ccd 3	ccd 6	ccd 7	ccd 8
level 1 events	46677	48644	50918	62561	65840
rejected events	41499	43087	45114	36830	52919
rejected %	88%	88%	88%	58%	80%

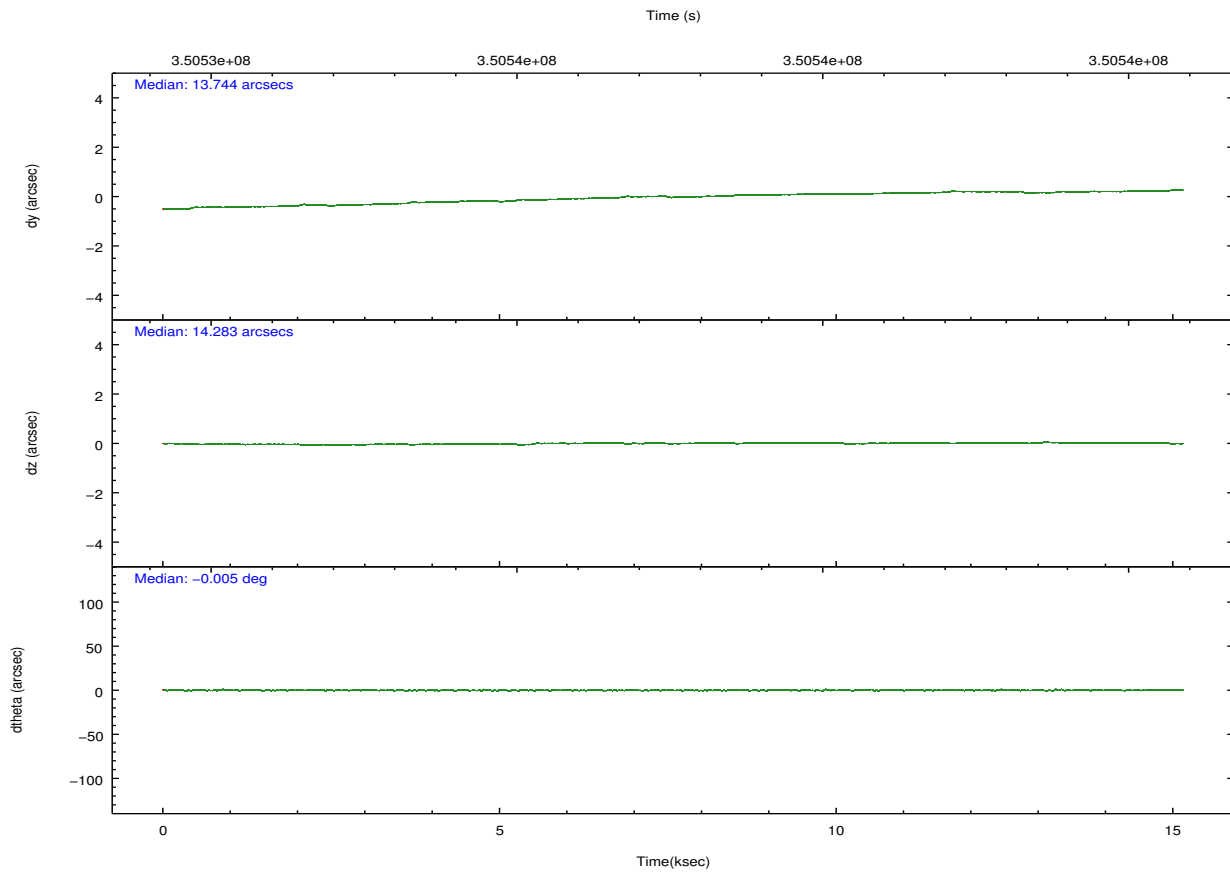
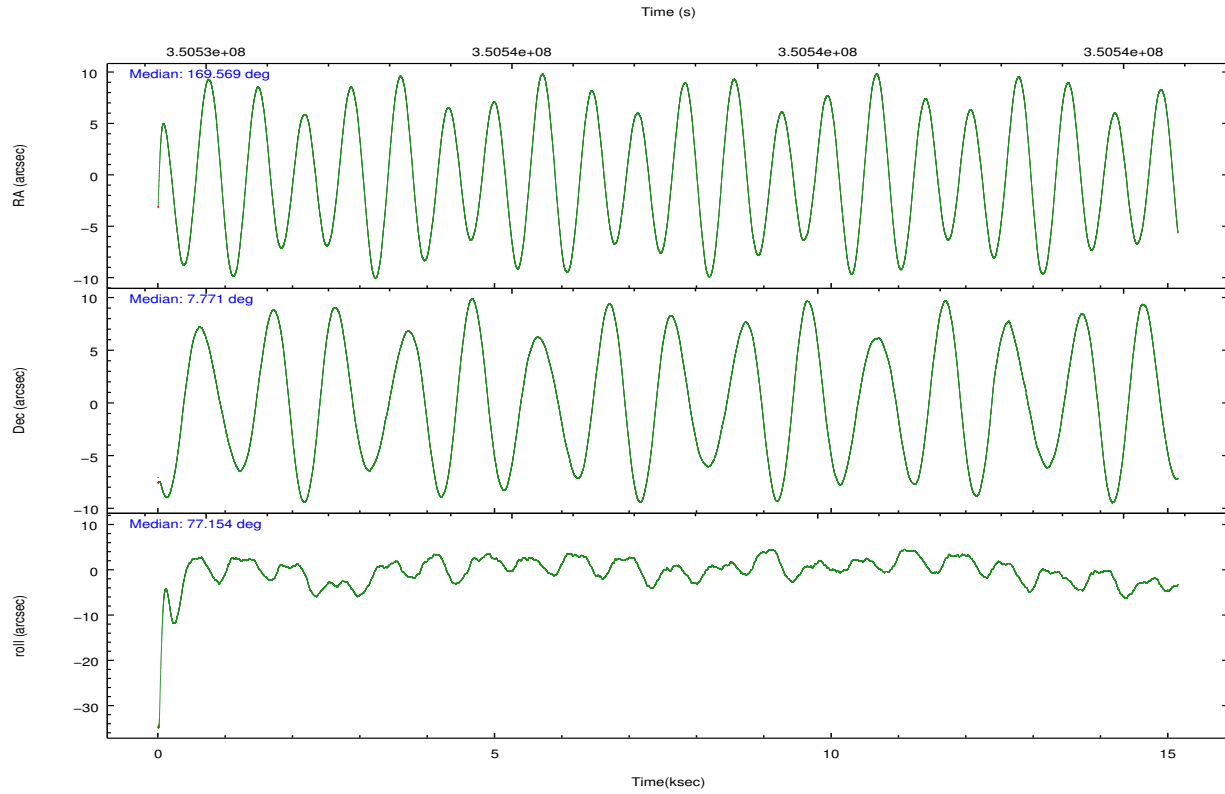
	ccd 2	ccd 3	ccd 6	ccd 7	ccd 8
grade 0 events	2125	2289	2128	2712	4037
	4%	4%	4%	4%	6%
grade 1 events	21	22	17	59	30
	0%	0%	0%	0%	0%
grade 2 events	1014	1050	1201	5774	3018
	2%	2%	2%	9%	4%
grade 3 events	749	822	815	2752	1595
	1%	1%	1%	4%	2%
grade 4 events	725	768	816	2657	1480
	1%	1%	1%	4%	2%
grade 5 events	1736	2115	2229	6062	2838
	3%	4%	4%	9%	4%
grade 6 events	854	964	1188	13254	3625
	1%	1%	2%	21%	5%
grade 7 events	39453	40614	42524	29291	49217
	84%	83%	83%	46%	74%

2.2 Compared Parameters

Parameter	Planned	Actual	Parameter	Planned	Actual
Instrument	ACIS	ACIS	Obspar format version number	7	7
Detector	ACIS-23678	ACIS-23678	Obspar file type	PREDICTED	ACTUAL
Grating	NONE	NONE	Obspar update status	NONE	UPDATED
Data mode	VFAINT	VFAINT	CCD I0 on	N	N
Observation mode	POINTING	POINTING	CCD I1 on	N	N
[deg] Pointing RA	169.577333	169.5688426368978	CCD I2 on	O1	Y
[deg] Pointing Dec	7.744691	7.770680988926051	CCD I3 on	O2	Y
[deg] Pointing Roll	76.999071	77.15681613800896	CCD S0 on	N	N
[mm] SIM focus pos	-0.684267	-0.6828225247311905	CCD S1 on	N	N
[mm] SIM defocus	0	0.001444936568705701	CCD S2 on	O4	Y
[mm] SIM translation stage pos	-190.132523	-190.1400660498719	CCD S3 on	Y	Y
[mm] SIM translation stage offset	0	0.00754346686406393	CCD S4 on	O3	Y
[s] Observation start time (MET)	350530134.184000	350528974.28972	CCD S5 on	N	N
Observation start date	2009-02-09T01:27:48	2009-02-09T01:09:34	Number of optional ACIS chips dropped	0	0
[s] Observation end time (MET)	350545134.184000	350545829.39056	On-chip summing requested	N	N
Observation end date	2009-02-09T05:37:48	2009-02-09T05:50:29	Subarray requested	CUSTOM	1/4
Read mode	TIMED	TIMED	Subarray start row	385	385
			Subarray row count	256	256
			Alternating exposures requested	N	N
			[s] Primary exposure time	0.000000	1

2.3 Aspect



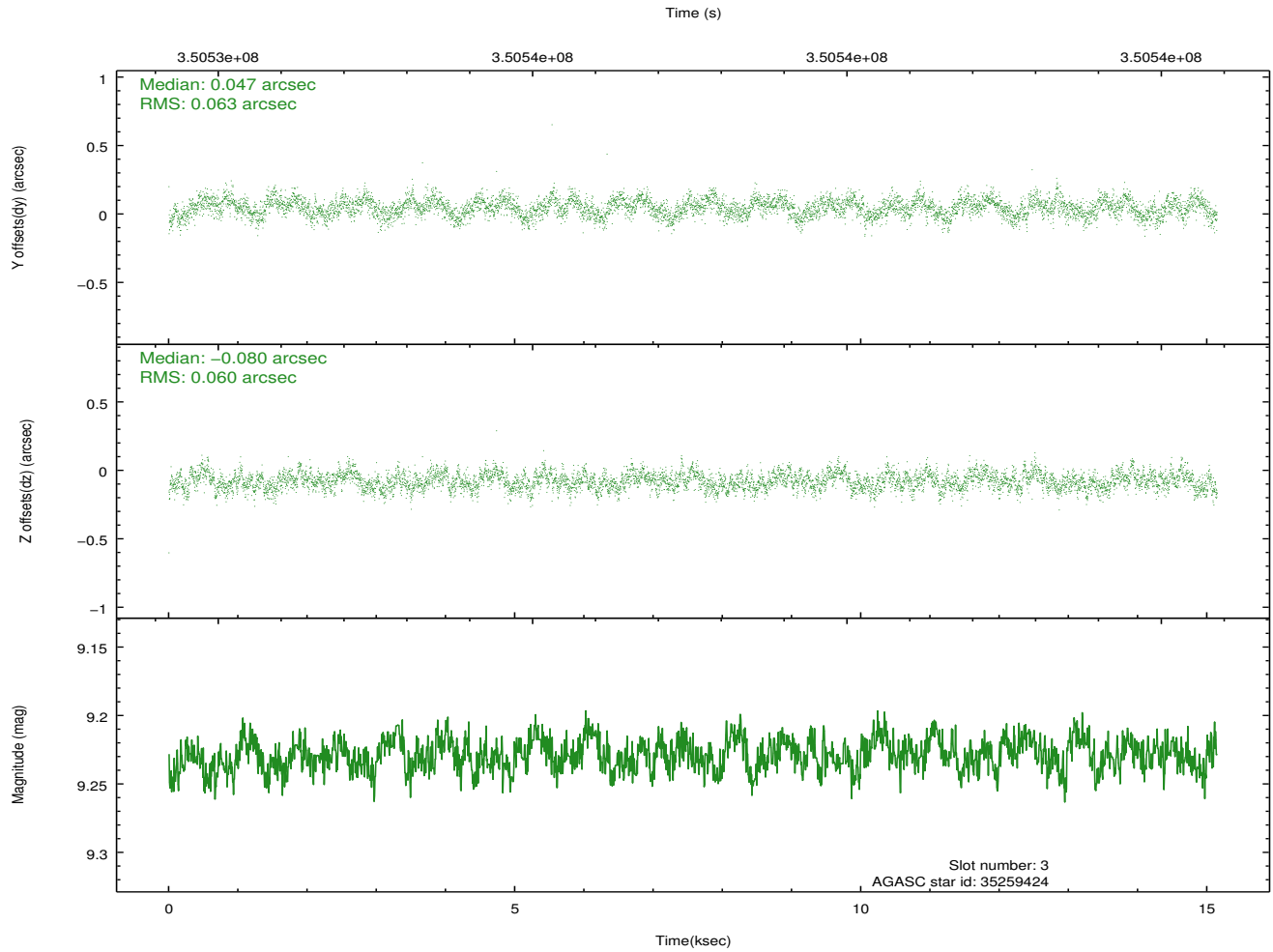
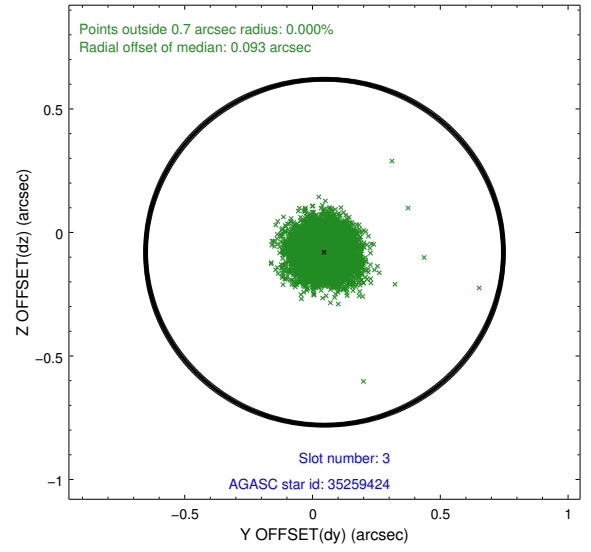
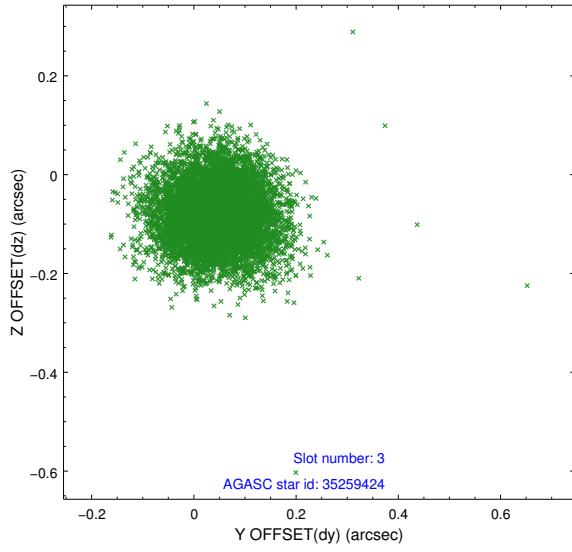


Slot Statistics

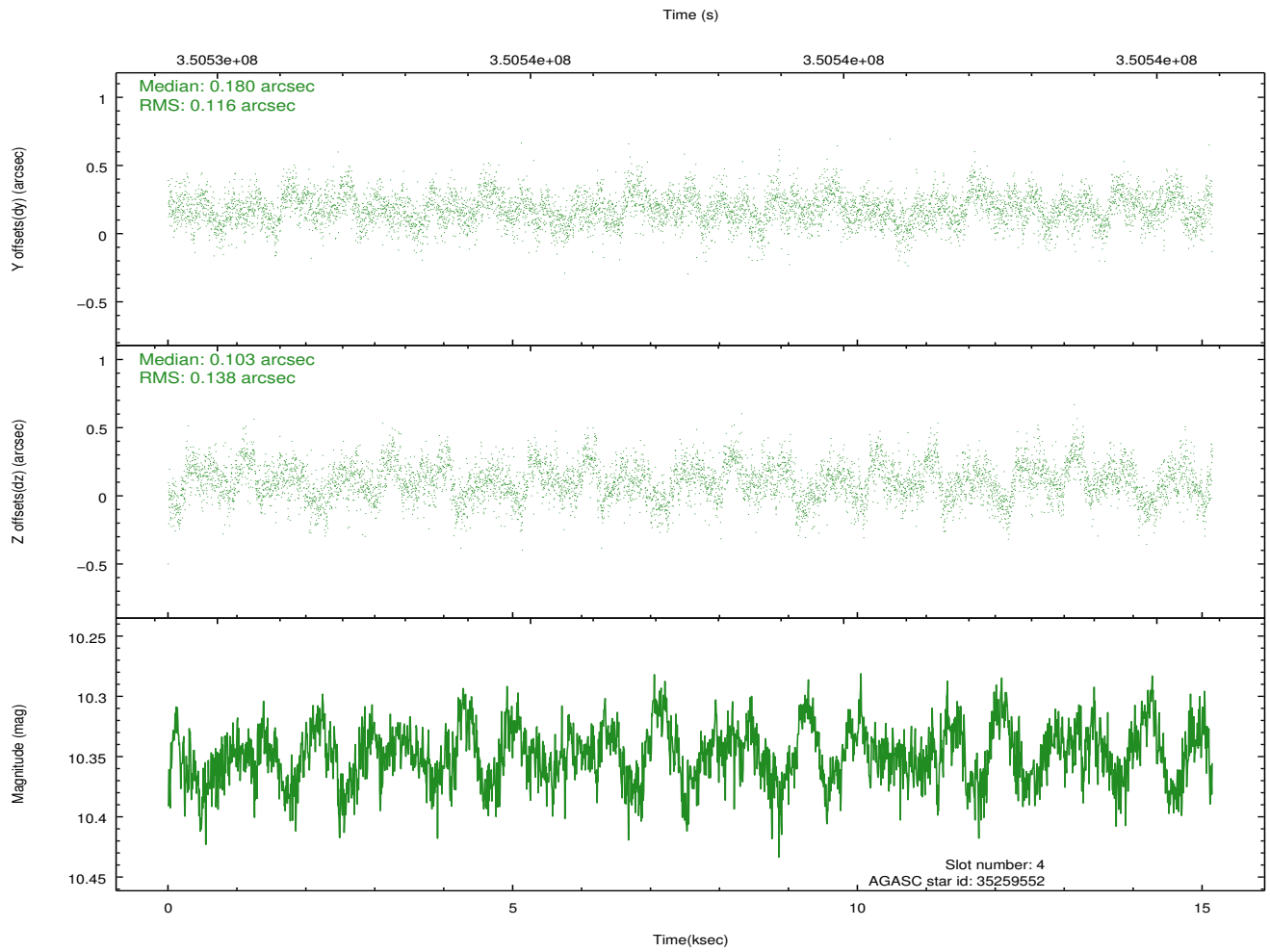
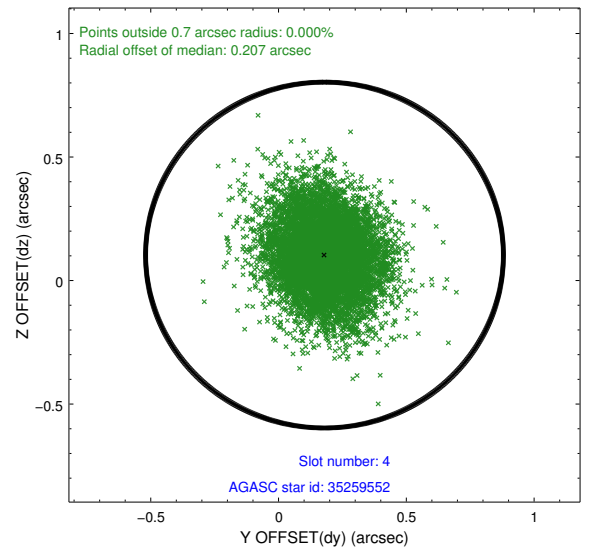
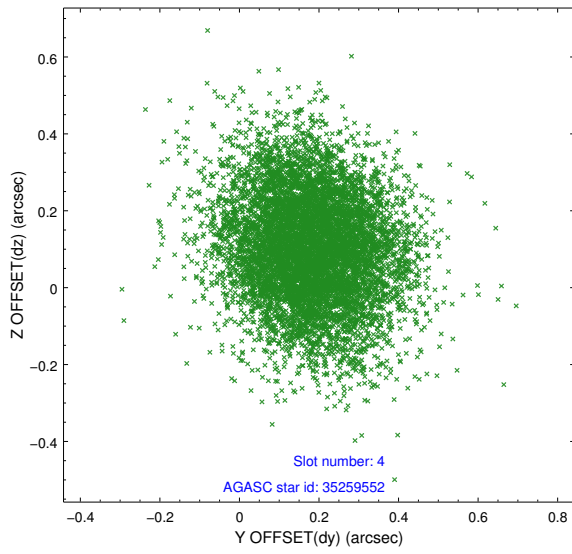
slot	status	id	mag	n_pts	med_dy	med_dz	dr1	dr2	ra	dec	mean_y	mean_z
0	FID	ACIS-S-2	6.93	3695	-0.045	-0.024	0.010	0.015	0.000000	0.000000	-766.65	-1735.67
1	FID	ACIS-S-4	7.01	3695	0.157	0.028	0.013	0.023	0.000000	0.000000	2146.67	172.59
2	FID	ACIS-S-5	7.04	3695	-0.142	0.005	0.008	0.014	0.000000	0.000000	-1819.23	166.54
3	GUIDE	35259424	9.23	7382	0.047	-0.080	0.092	0.147	169.225147	7.406887	-1467.11	951.91
4	GUIDE	35259552	10.35	7375	0.180	0.103	0.190	0.312	169.021323	7.237315	-2225.29	1524.67
5	OMITTED		0.00	0	0.000	0.000	0.000	0.000	0.000000	0.000000	0.00	0.00
6	GUIDE	112067736	10.45	7271	-0.290	-0.131	0.262	0.390	169.254540	7.940950	429.53	1280.76
7	GUIDE	112068528	8.78	7384	0.075	0.105	0.104	0.161	169.984852	7.578312	-255.41	-1551.03

2.4 Star Slots

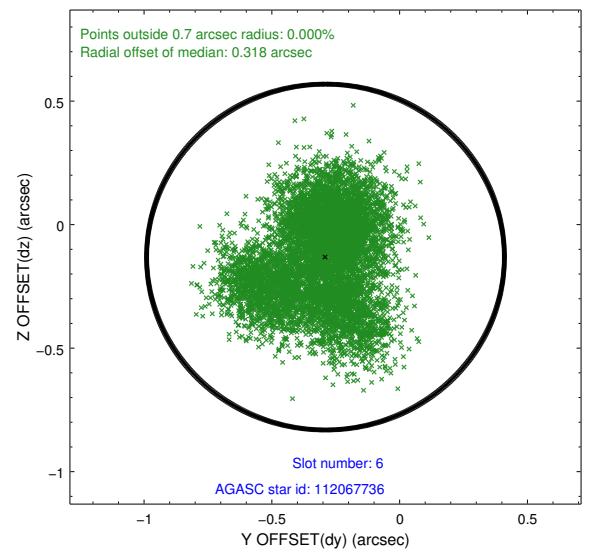
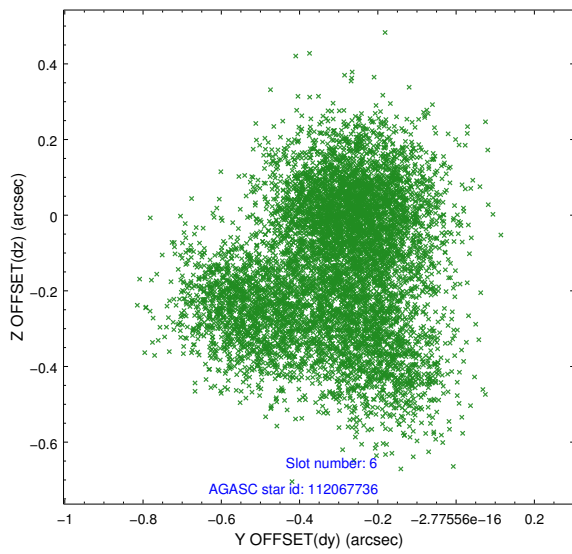
2.4.1 Slot 3



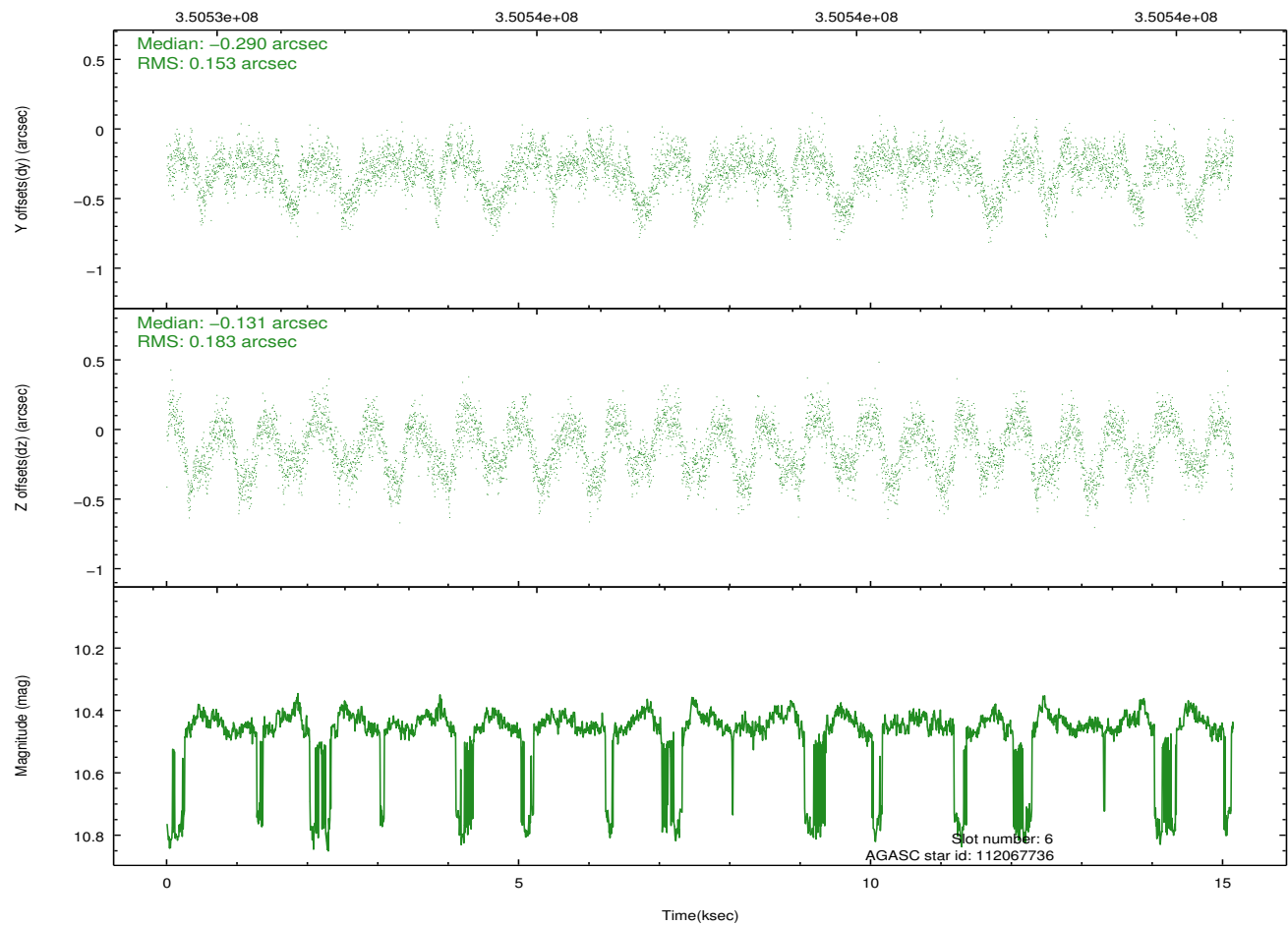
2.4.2 Slot 4



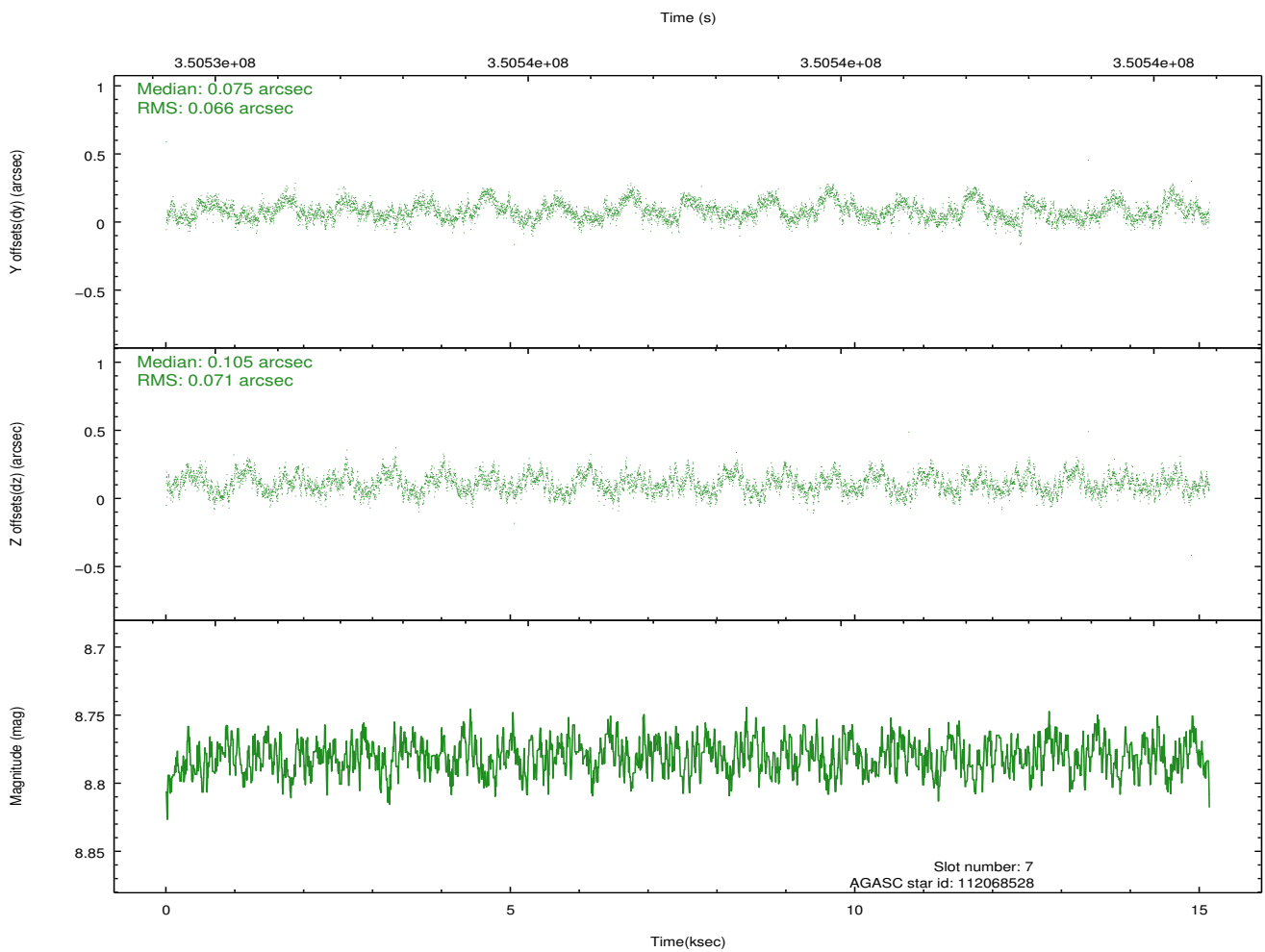
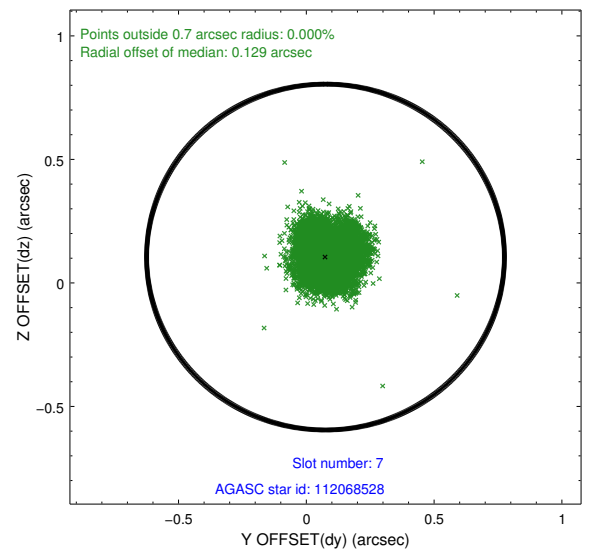
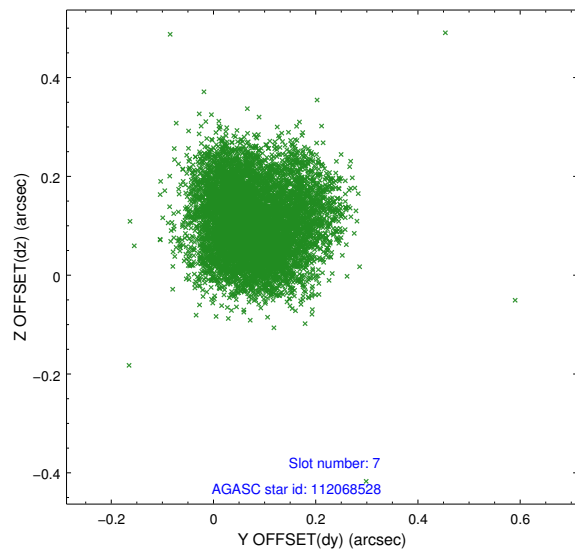
2.4.3 Slot 6



Time (s)

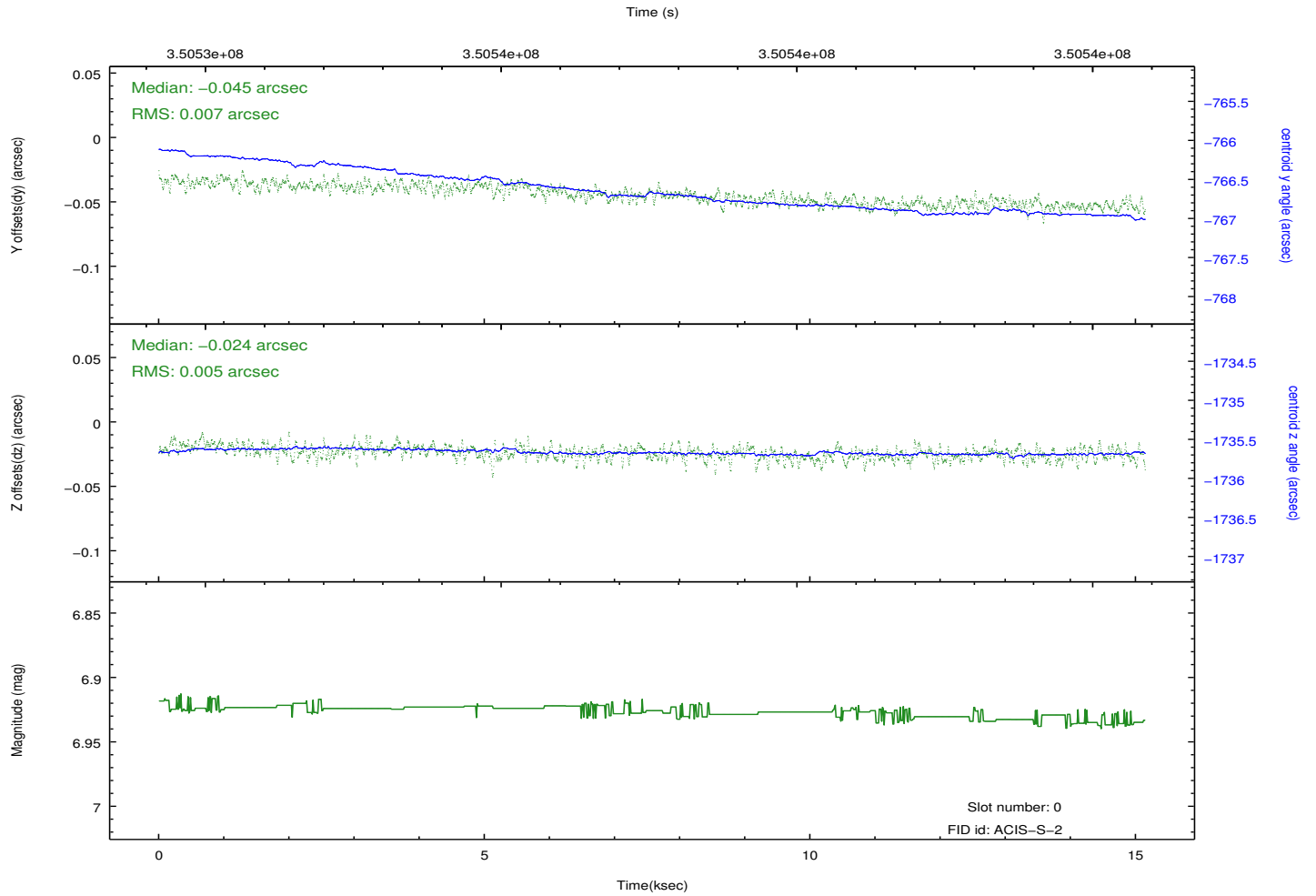
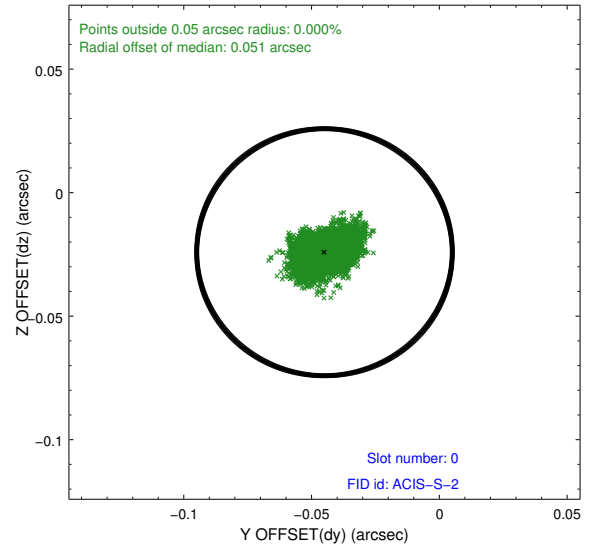
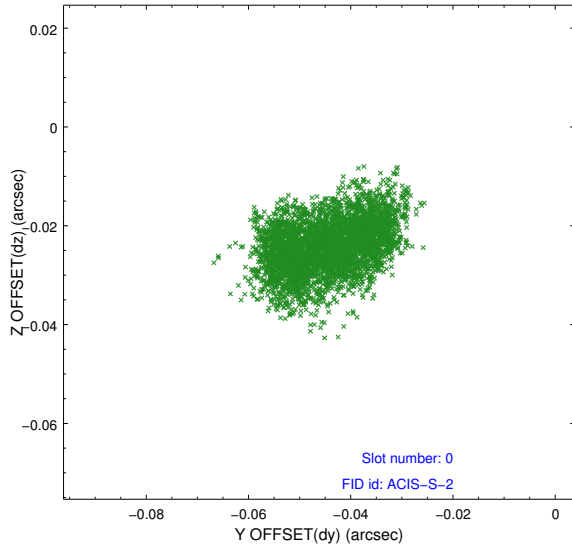


2.4.4 Slot 7

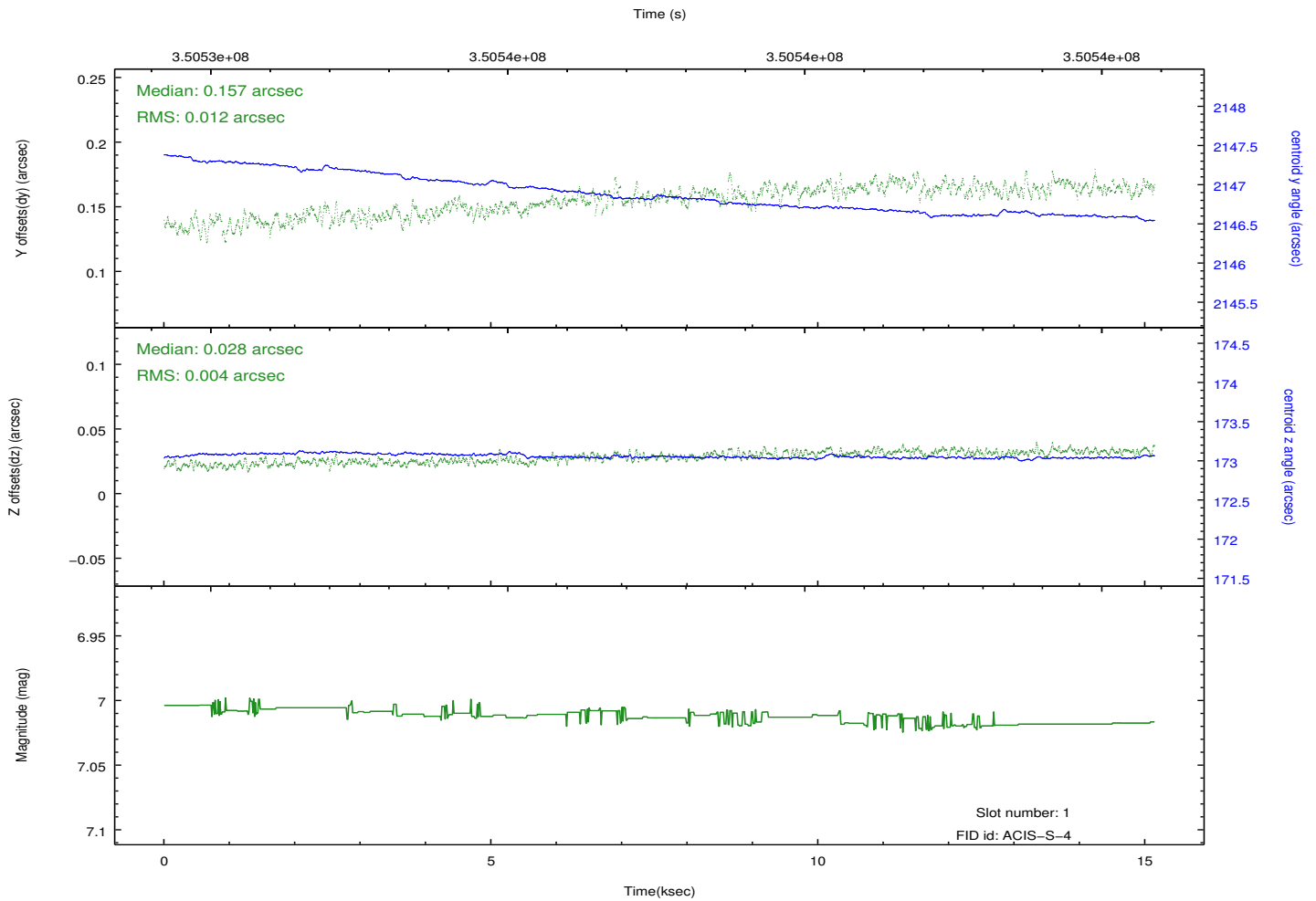
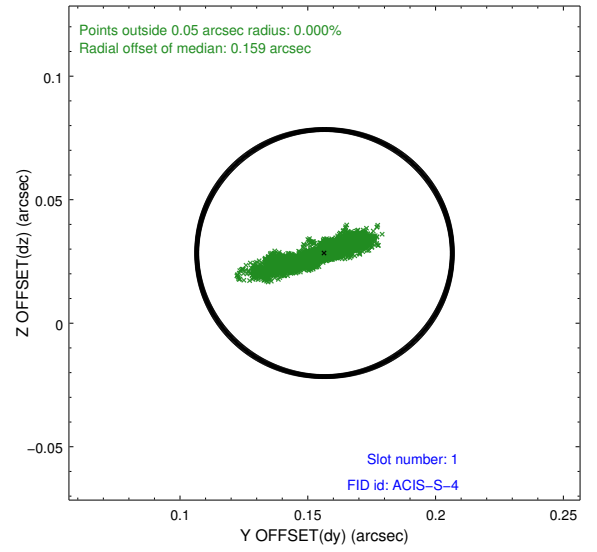
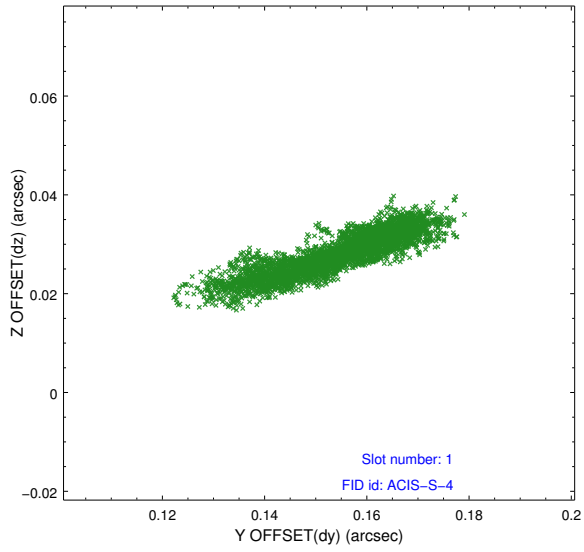


2.5 FID Slots

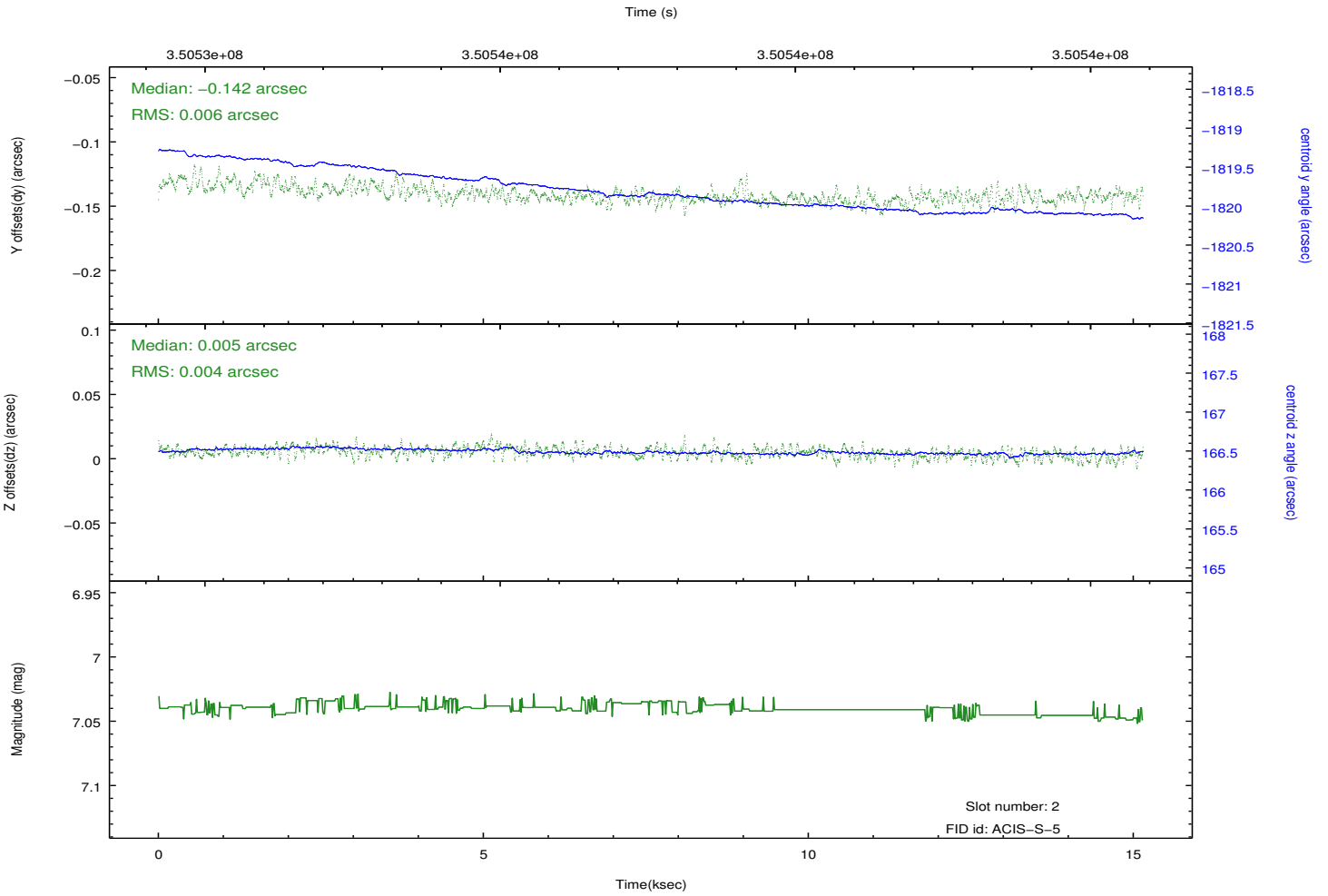
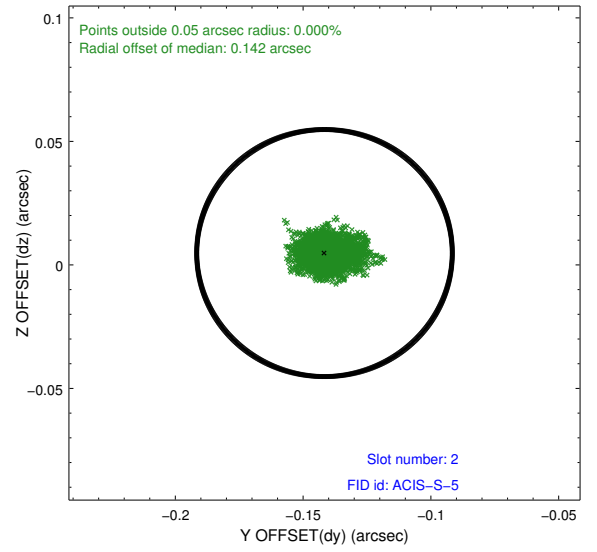
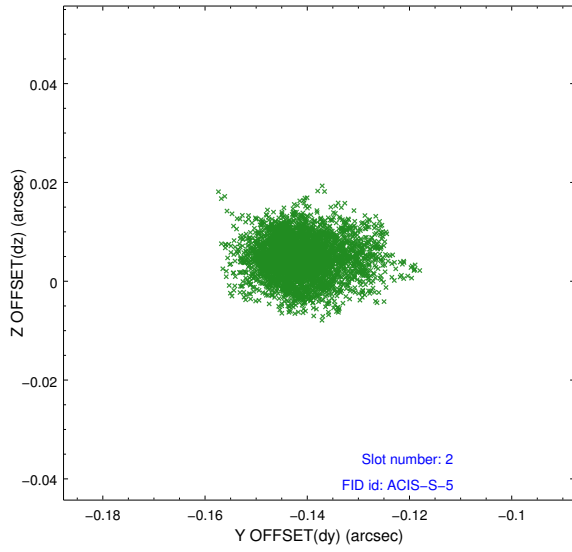
2.5.1 Slot 0



2.5.2 Slot 1



2.5.3 Slot 2



A Summary

A.1 Status

V&V Scientist	Jen Lauer
V&V Date (YYYY-MM-DD)	2012.06.19
V&V Edition	1
V&V Disposition and Status	OK
V&V Charge Time	15.142

A.2 Comments

The guide star in slot 5 was removed from the aspect solution due to poor data quality. The aspect solution is improved by the removal of this guide star from the solution.

=====

Coordinated optical monitoring. Window preference met.