

# V&V Reference Report

## L2 ASCDS Version : 8.4.5

Observation 11305 - L2 Version 2  
Chandra X-Ray Center

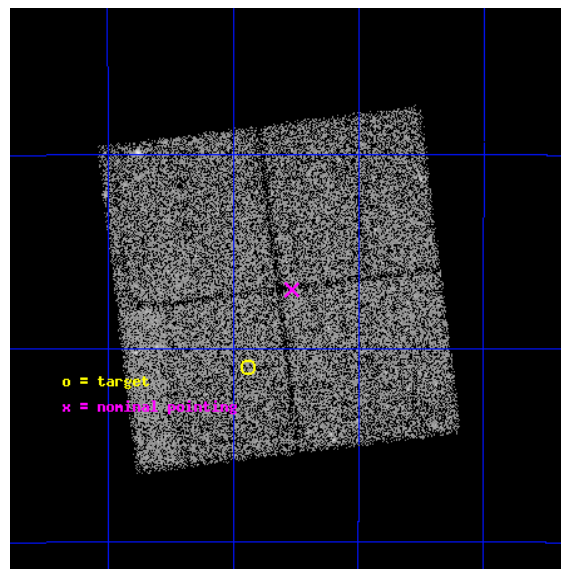
L2 Processing Date : Jun 25 2012

## Contents

<b>1</b>	<b>Front</b>	<b>2</b>
<b>2</b>	<b>OBI</b>	<b>3</b>
2.1	OBI . . . . .	3
2.1.1	Images . . . . .	3
2.1.2	Bias . . . . .	3
2.1.3	Parameters . . . . .	4
2.1.4	Events . . . . .	4
2.2	Compared Parameters . . . . .	5
2.3	Aspect . . . . .	6
2.4	Star Slots . . . . .	9
2.4.1	Slot 3 . . . . .	9
2.4.2	Slot 4 . . . . .	10
2.4.3	Slot 5 . . . . .	11
2.4.4	Slot 6 . . . . .	12
2.4.5	Slot 7 . . . . .	13
2.5	FID Slots . . . . .	14
2.5.1	Slot 0 . . . . .	14
2.5.2	Slot 1 . . . . .	15
2.5.3	Slot 2 . . . . .	16
<b>A</b>	<b>Summary</b>	<b>17</b>
A.1	Status . . . . .	17
A.2	Comments . . . . .	17

# 1 Front

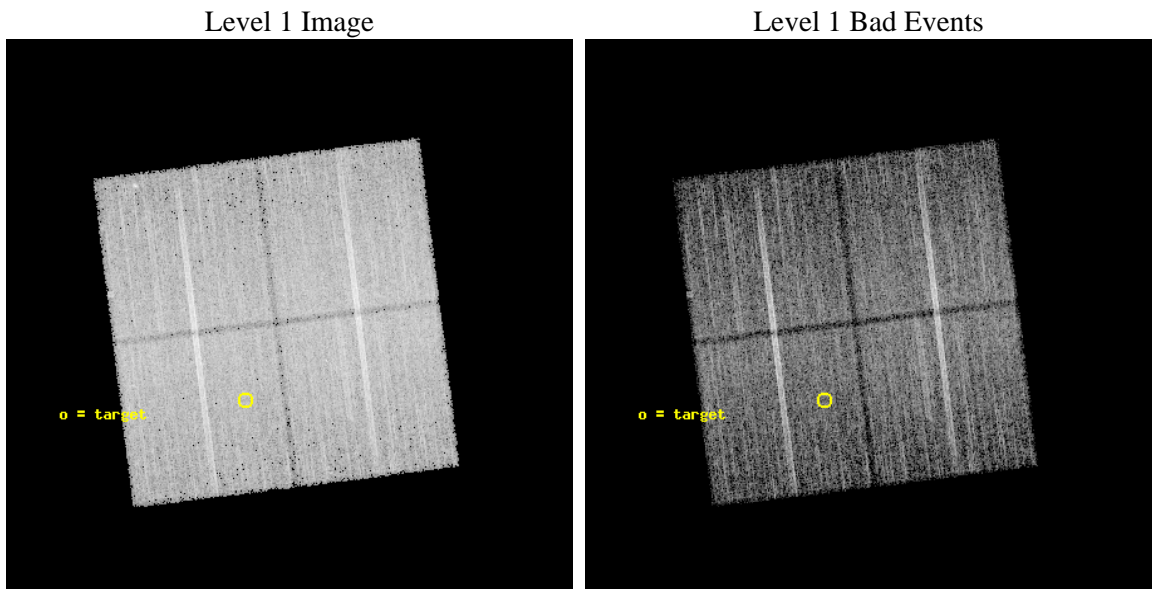
seq_num	600824	Sequence number
obs_id	11305	Observation id
title	The Deepest Stellar X-ray/optical Census of the Bulge	Proposal tit
observer	Dr William Clarkson	Principal investigator
object	SWEEPS_FIELD	Source name
dtcycle	0	&#160
cycle	P	events from which exps? Prim/Second/Both
ra_targ	269.735558	Observer's specified target RA [deg]
dec_targ	-29.18259	Observer's specified target Dec [deg]
ra_nom	269.69150971374	Nominal RA [deg]
dec_nom	-29.116136567656	Nominal Dec [deg]
roll_nom	82.917191173483	Nominal Roll [deg]
revision	2	Processing version of data
ontime	20060.100154281	Sum of GTIs [s]
livetime	19798.000177734	Livetime [s]
ontime0	20056.95915395	Sum of GTIs [s]
ontime1	20060.100154281	Sum of GTIs [s]
ontime2	20060.100154281	Sum of GTIs [s]
ontime3	20053.818153679	Sum of GTIs [s]
l2events	69293	Number of level 2 events



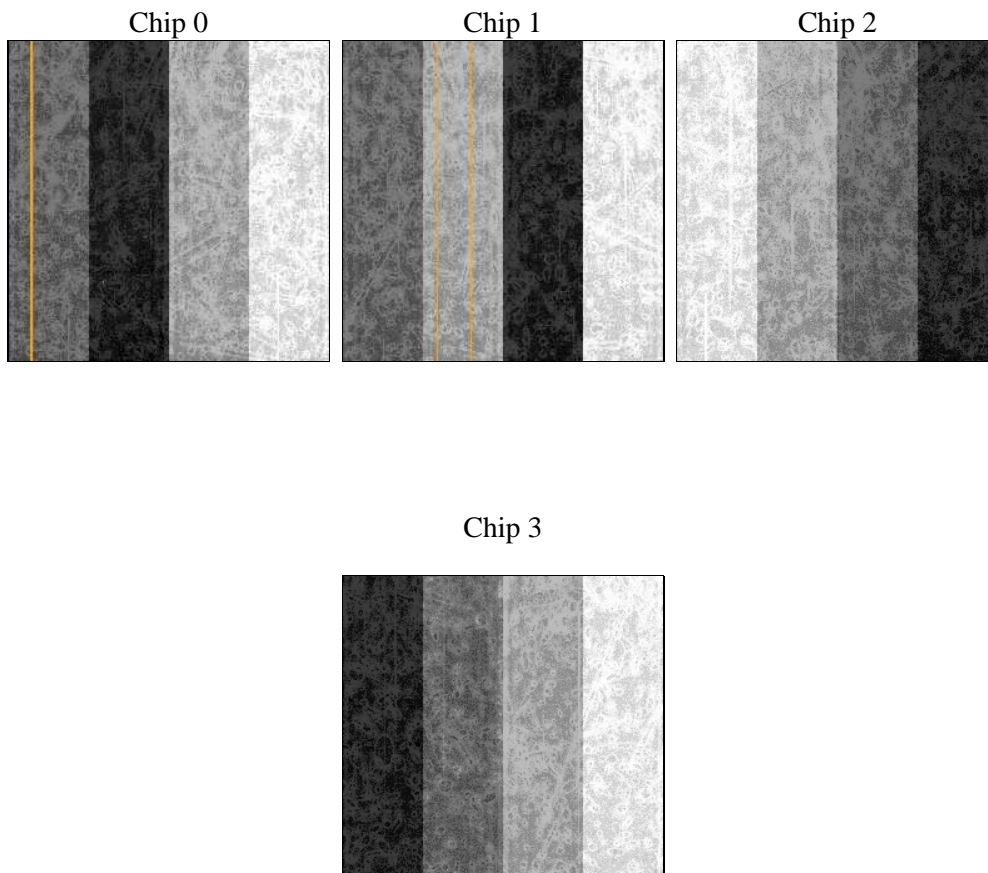
## 2 OBI

### 2.1 OBI

#### 2.1.1 Images



#### 2.1.2 Bias



### 2.1.3 Parameters

obi_num	0	Obi number	sched_exp_time	20000.000000	[s] Scheduled observation exposure time
ascdsver	8.4.5	Processing system revision	ontime	20060.100154281	Sum of GTIs [s]
caldsver	4.4.10	&#160	ontime0	20056.95915395	Sum of GTIs [s]
date	2012-06-25T11:23:45	Date and time of file creation	ontime1	20060.100154281	Sum of GTIs [s]
revision	2	Processing version of data	ontime2	20060.100154281	Sum of GTIs [s]
			ontime3	20053.818153679	Sum of GTIs [s]
			l1events	587462	Number of level 1 events

### 2.1.4 Events

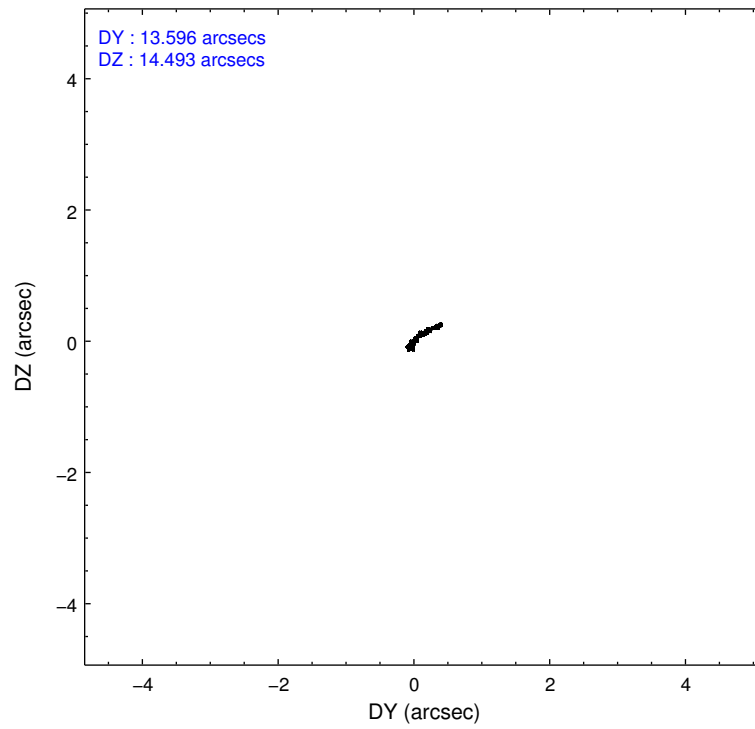
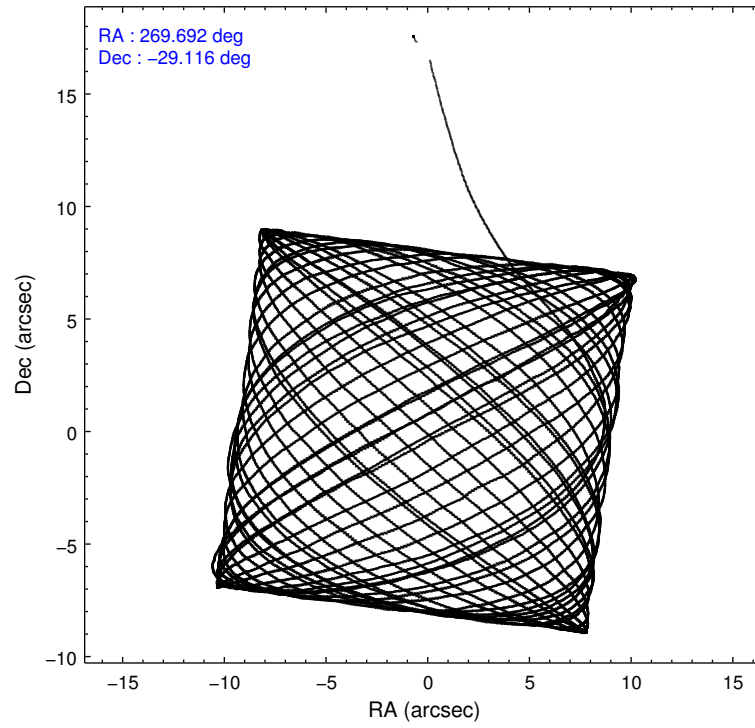
	ccd 0	ccd 1	ccd 2	ccd 3
level 1 events	140596	143942	150808	152116
rejected events	120006	121955	131195	132953
rejected %	85%	84%	86%	87%

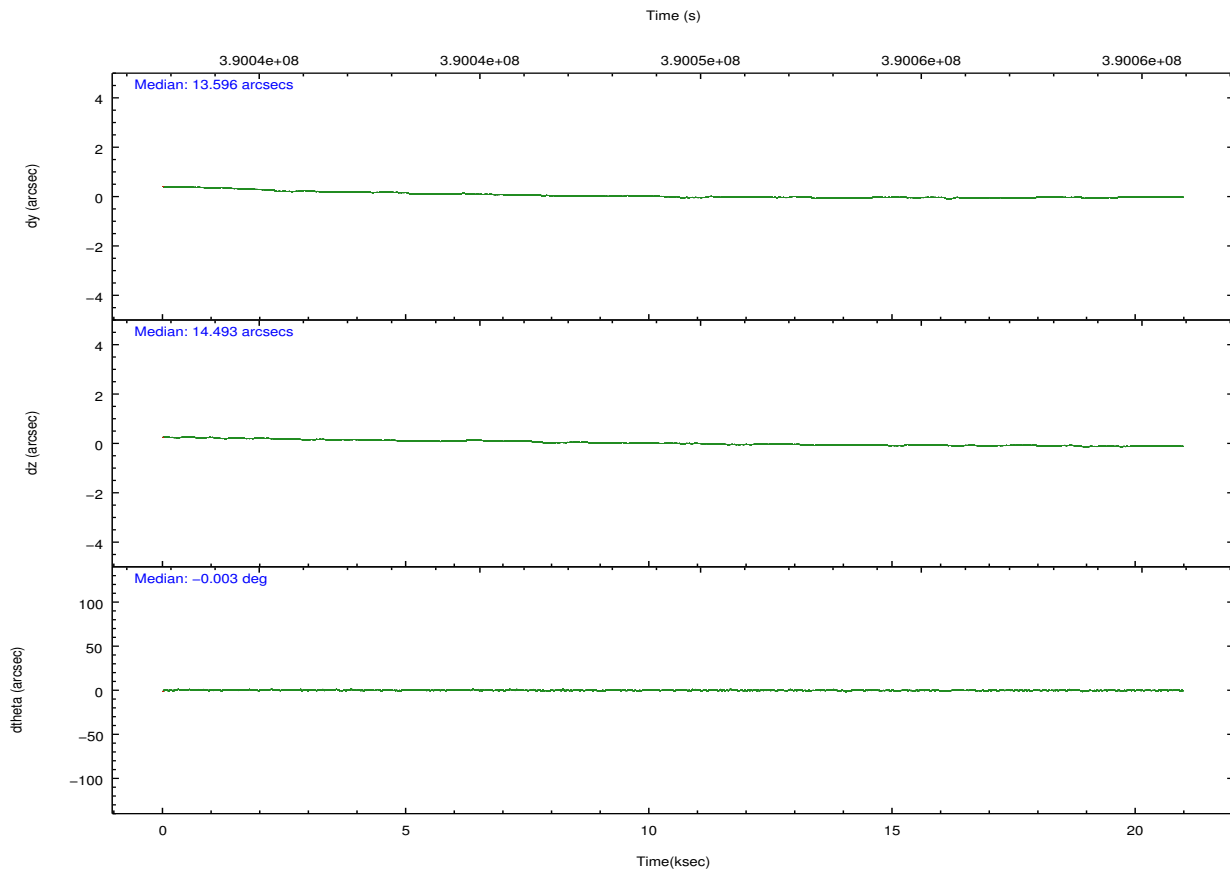
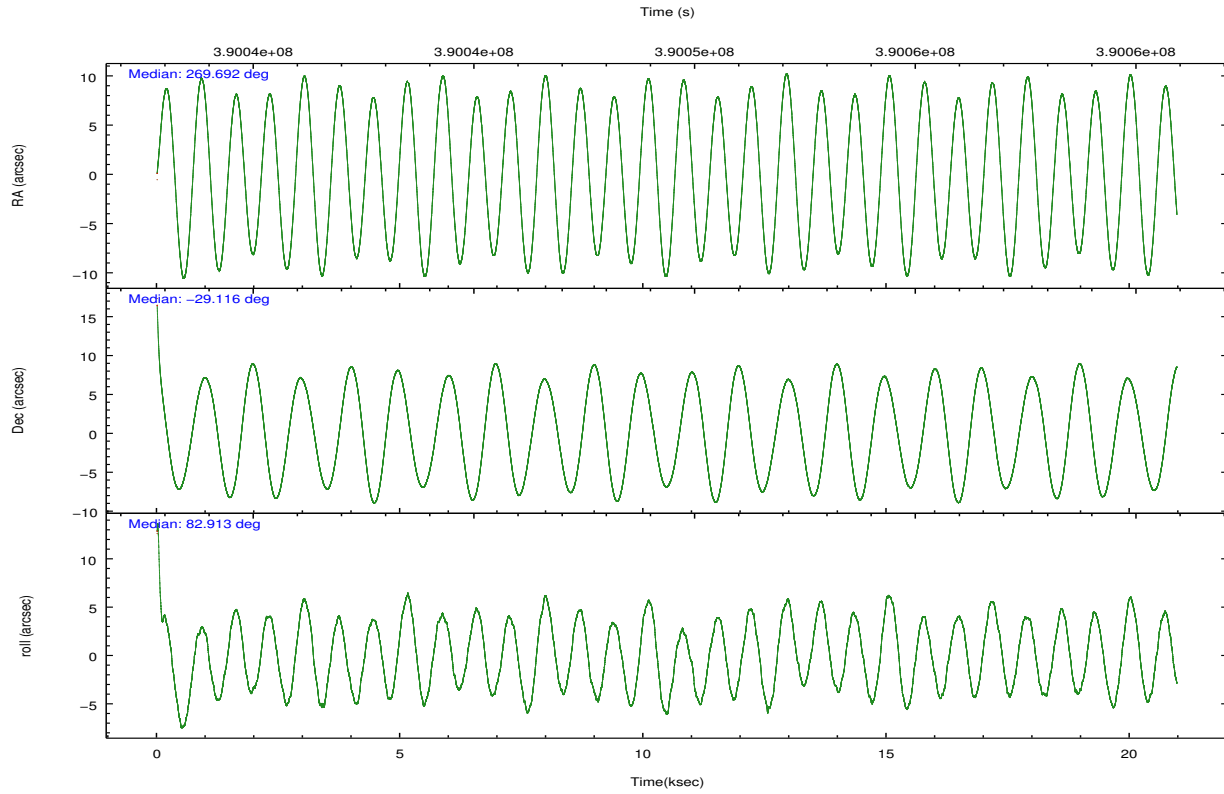
	ccd 0	ccd 1	ccd 2	ccd 3
grade 0 events	9353	9780	8852	8784
	6%	6%	5%	5%
grade 1 events	122	103	101	107
	0%	0%	0%	0%
grade 2 events	4269	4498	4189	3759
	3%	3%	2%	2%
grade 3 events	1960	1948	1728	1767
	1%	1%	1%	1%
grade 4 events	1778	2004	1831	1727
	1%	1%	1%	1%
grade 5 events	6119	6649	5660	6763
	4%	4%	3%	4%
grade 6 events	3235	3759	3022	3131
	2%	2%	2%	2%
grade 7 events	113760	115201	125425	126078
	80%	80%	83%	82%

## 2.2 Compared Parameters

Parameter	Planned	Actual	Parameter	Planned	Actual
Instrument	ACIS	ACIS	Obspar format version number	7	7
Detector	ACIS-0123	ACIS-0123	Obspar file type	PREDICTED	ACTUAL
Grating	NONE	NONE	Obspar update status	NONE	UPDATED
Data mode	VFAINT	VFAINT	Number of optional ACIS chips dropped	0	0
Observation mode	POINTING	POINTING	On-chip summing requested	N	N
[deg] Pointing RA	269.703862	269.6915097137449	Subarray requested	NONE	NONE
[deg] Pointing Dec	-29.141423	-29.11613656765637	Alternating exposures requested	N	N
[deg] Pointing Roll	82.714506	82.91719117348333	[s] Primary exposure time	0.000000	3.1
[mm] SIM focus pos	-0.782348	-0.7809083437167272			
[mm] SIM defocus	0	0.001439871863259334			
[mm] SIM translation stage pos	-233.592463	-233.5874344608287			
[mm] SIM translation stage offset	0	-0.005018542100998502			
[s] Observation start time (MET)	390039862.184000	390037608.96231			
Observation start date	2010-05-12T08:23:16	2010-05-12T07:46:48			
[s] Observation end time (MET)	390059862.184000	390060684.78848			
Observation end date	2010-05-12T13:56:36	2010-05-12T14:11:24			
Read mode	TIMED	TIMED			

## 2.3 Aspect



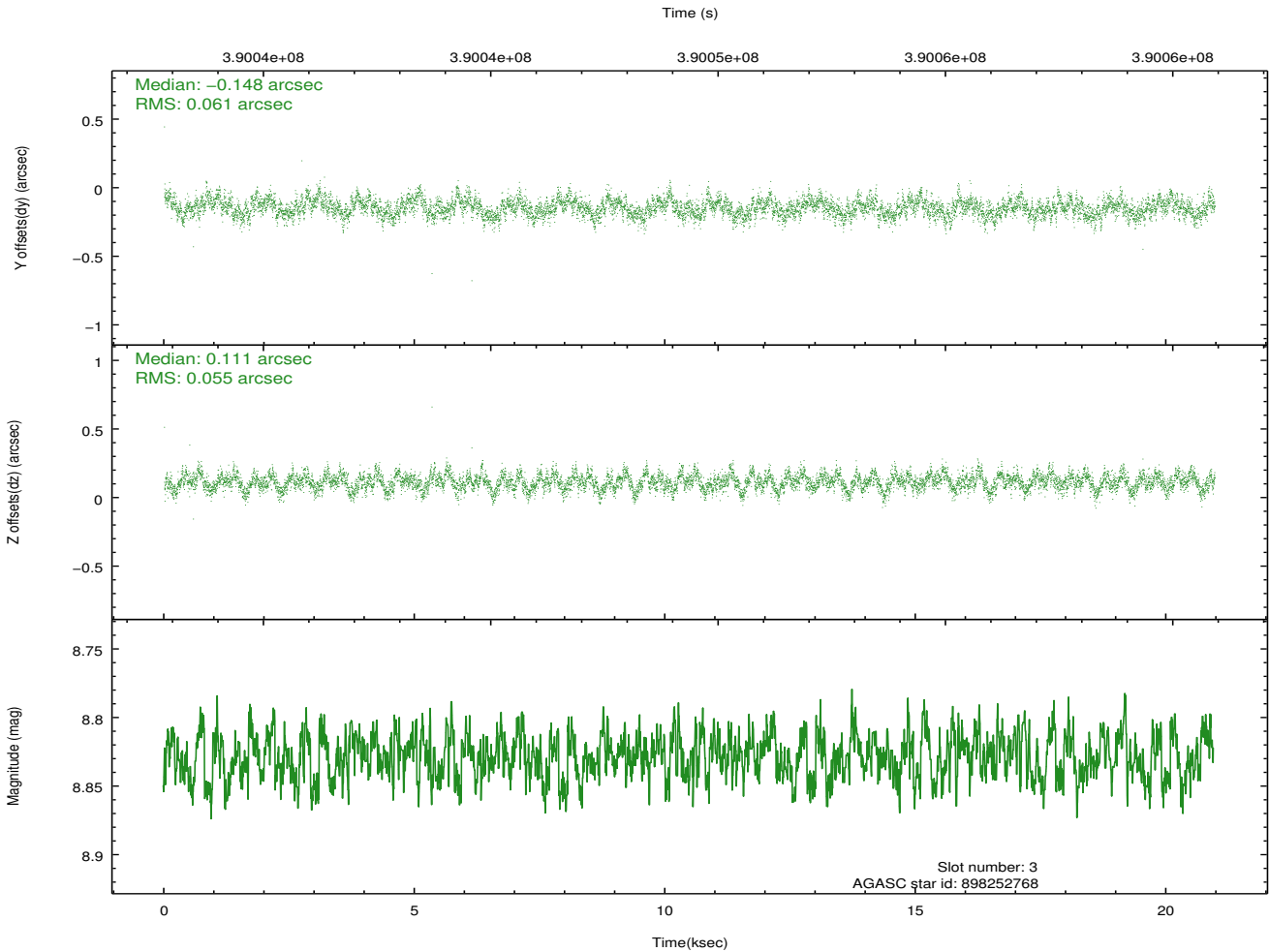
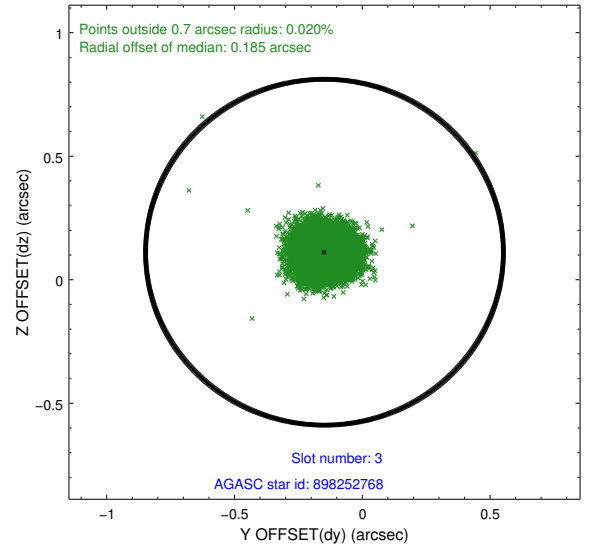
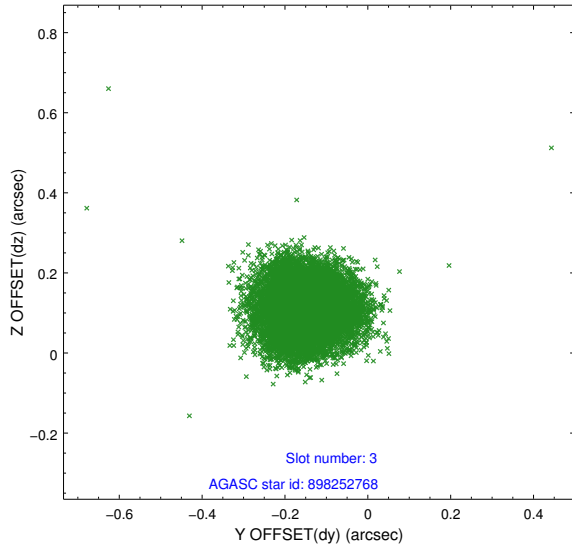


### Slot Statistics

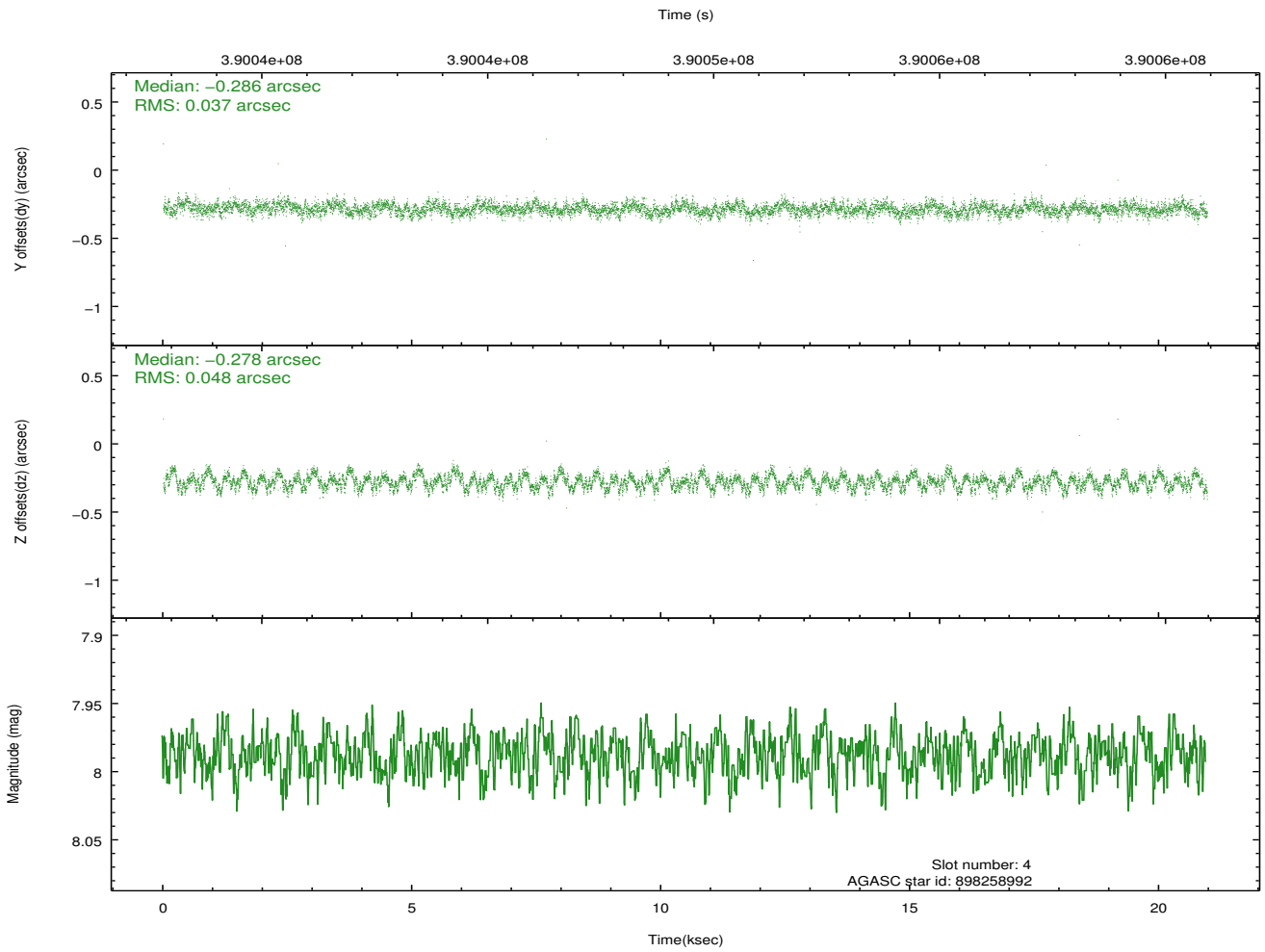
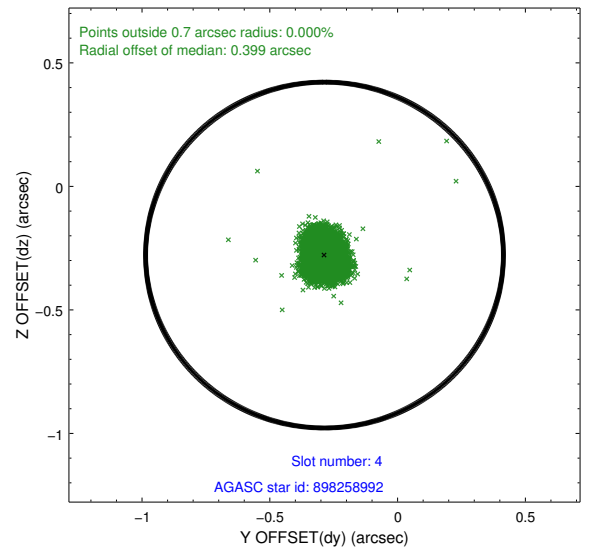
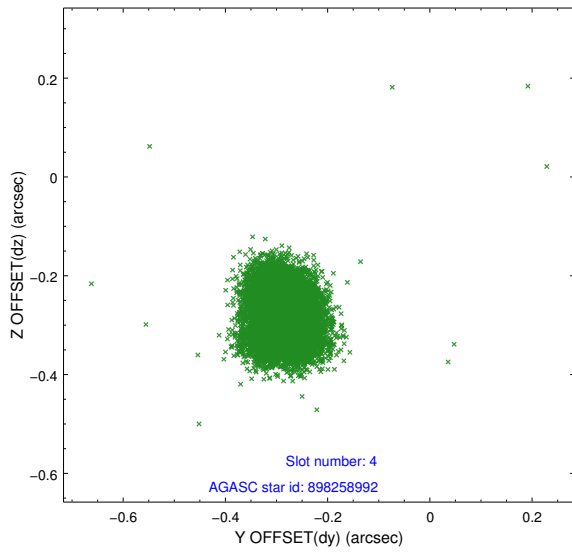
slot	status	id	mag	n_pts	med_dy	med_dz	dr1	dr2	ra	dec	mean_y	mean_z
0	FID	ACIS-I-1	7.05	5114	0.033	0.005	0.009	0.015	0.000000	0.000000	925.89	-838.08
1	FID	ACIS-I-5	7.03	5114	-0.217	0.038	0.009	0.015	0.000000	0.000000	-1822.41	1059.30
2	FID	ACIS-I-6	7.03	5115	0.093	0.027	0.009	0.016	0.000000	0.000000	391.26	1704.03
3	GUIDE	898252768	8.83	10223	-0.148	0.111	0.087	0.139	269.910789	-28.705322	1639.65	-448.65
4	GUIDE	898258992	7.99	10228	-0.286	-0.278	0.064	0.102	269.435214	-28.570389	1930.46	1103.17
5	GUIDE	898383760	8.24	10223	0.216	0.201	0.062	0.100	270.301358	-29.342458	-484.78	-1951.66
6	GUIDE	898243064	8.74	10217	0.161	-0.201	0.091	0.150	268.852106	-29.678564	-2265.59	2395.82
7	GUIDE	898398488	7.80	10225	0.057	0.168	0.066	0.104	270.116283	-29.824370	-2277.58	-1589.35

## 2.4 Star Slots

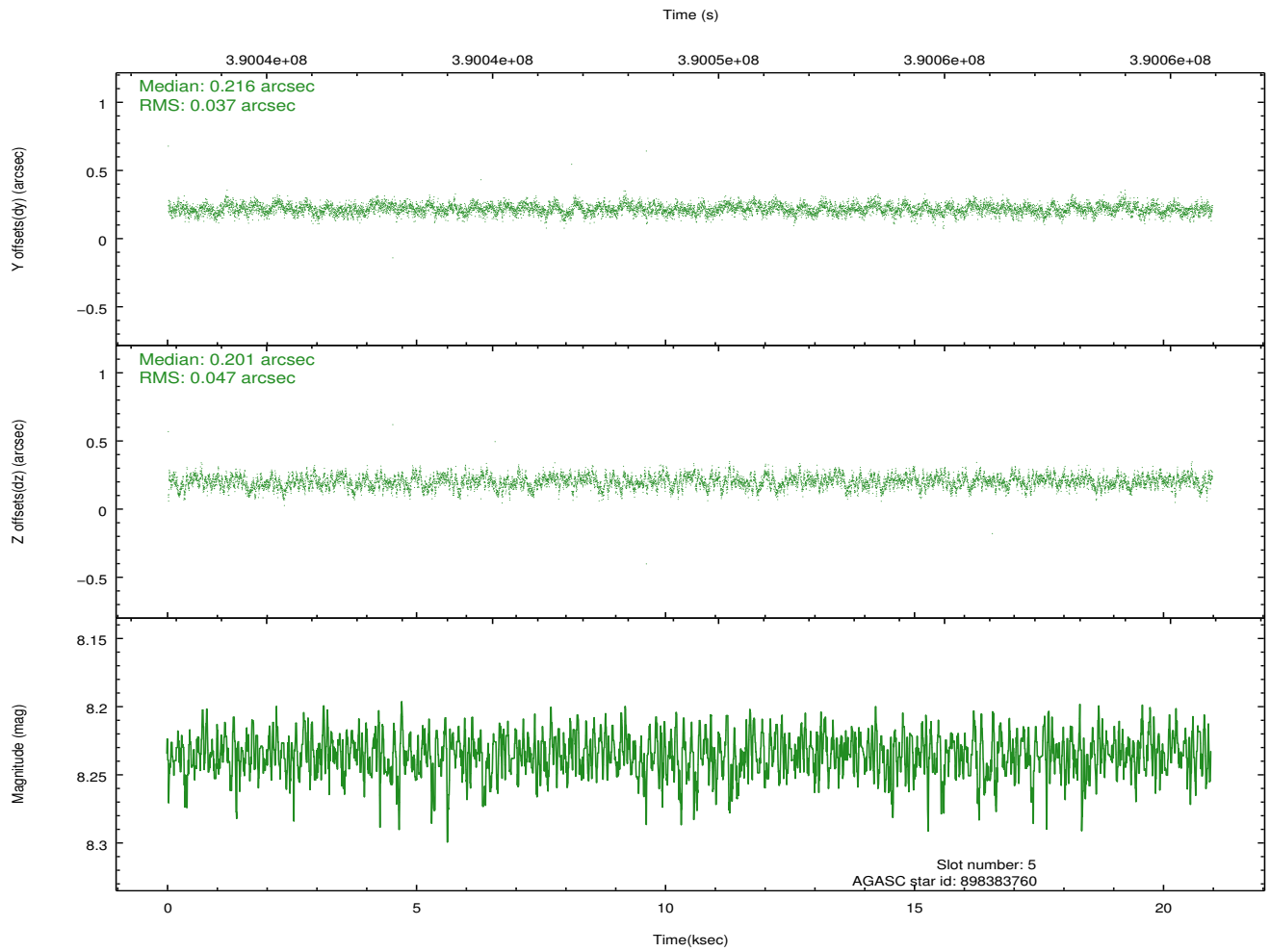
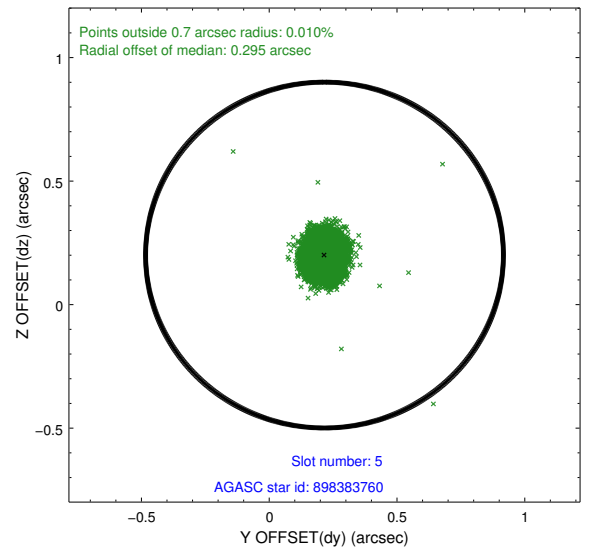
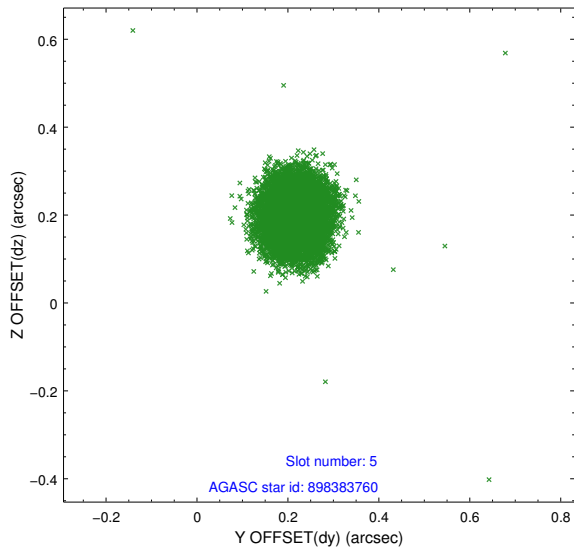
### 2.4.1 Slot 3



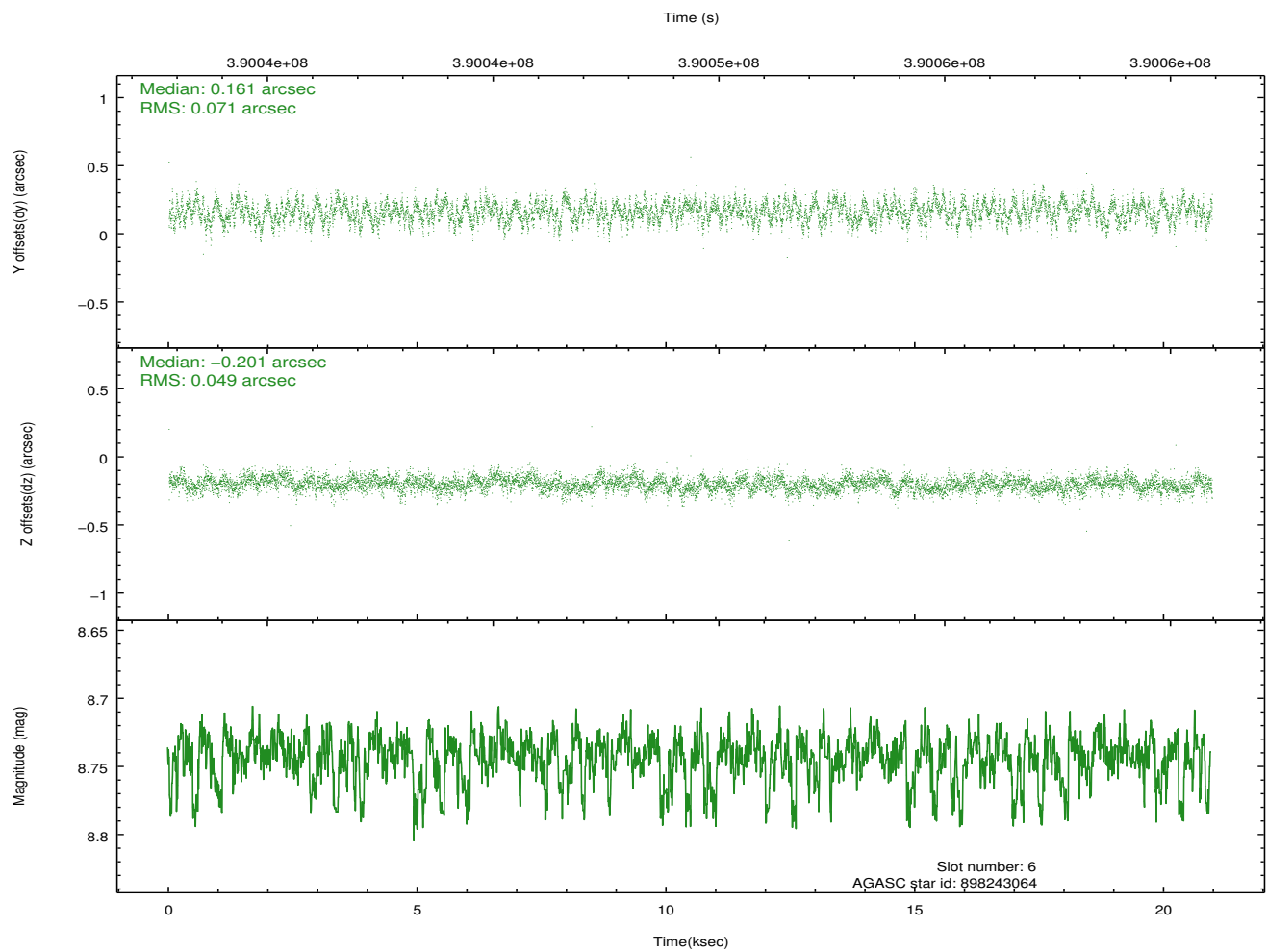
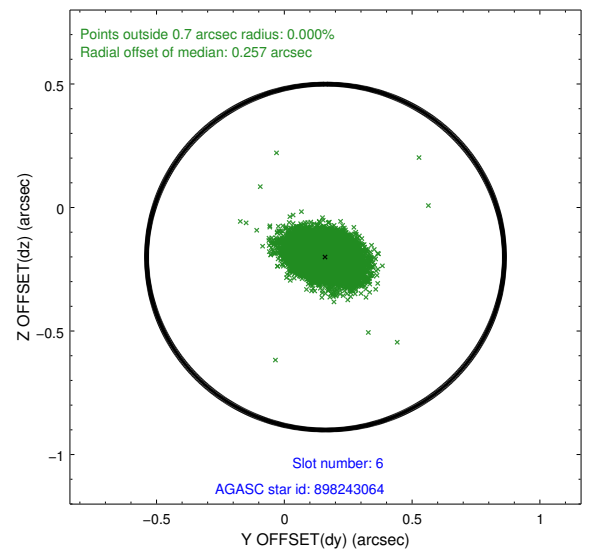
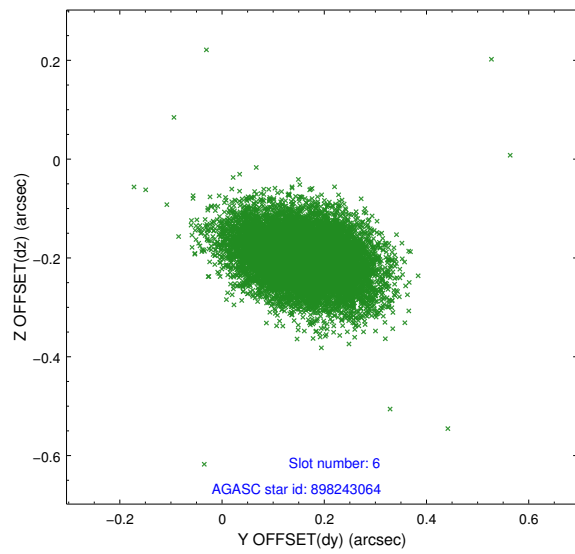
## 2.4.2 Slot 4



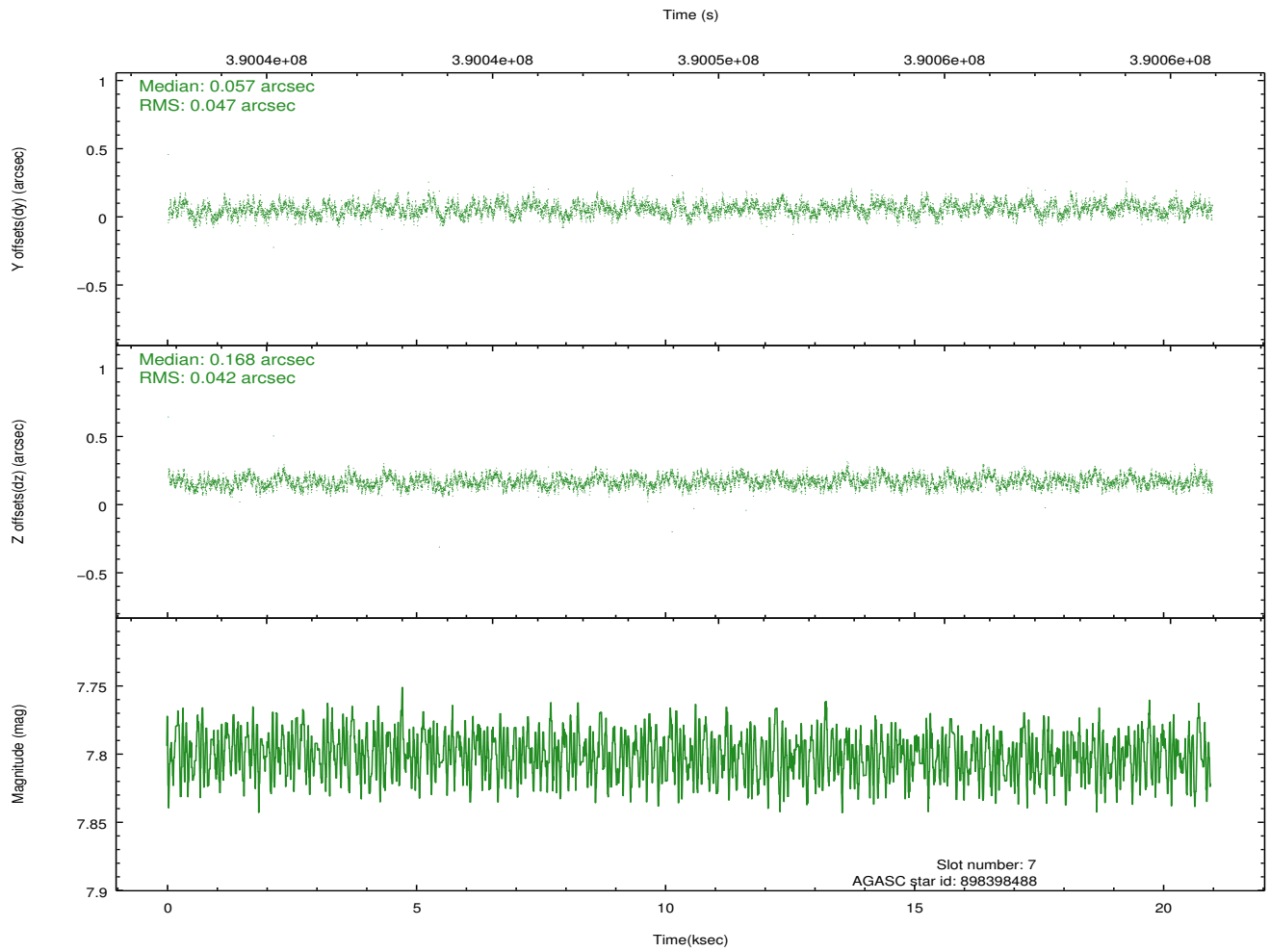
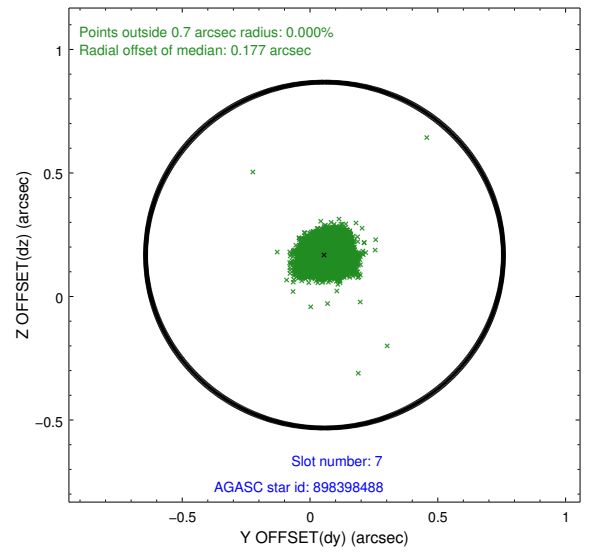
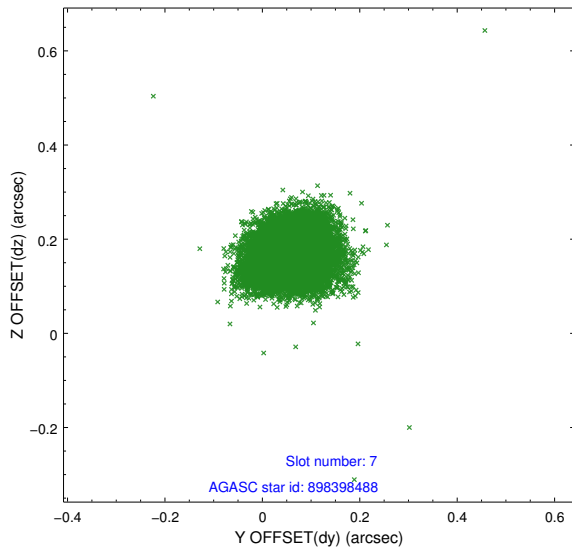
### 2.4.3 Slot 5



## 2.4.4 Slot 6

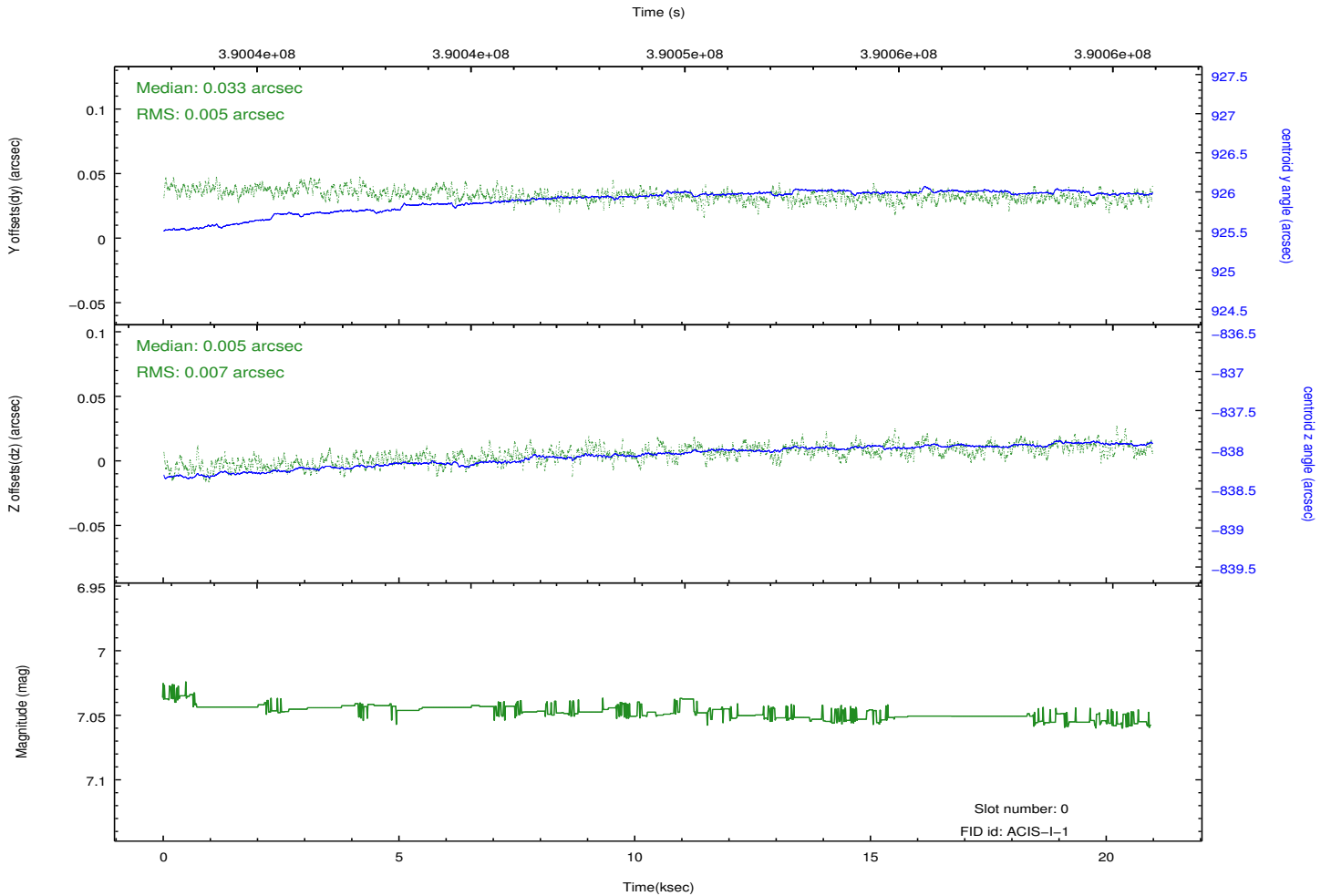
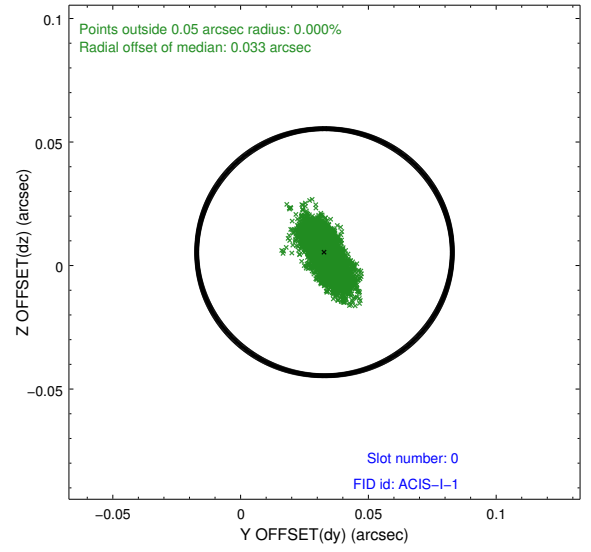
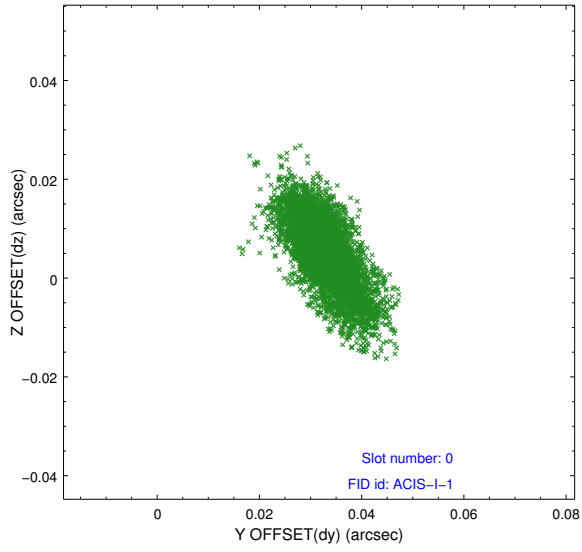


### 2.4.5 Slot 7

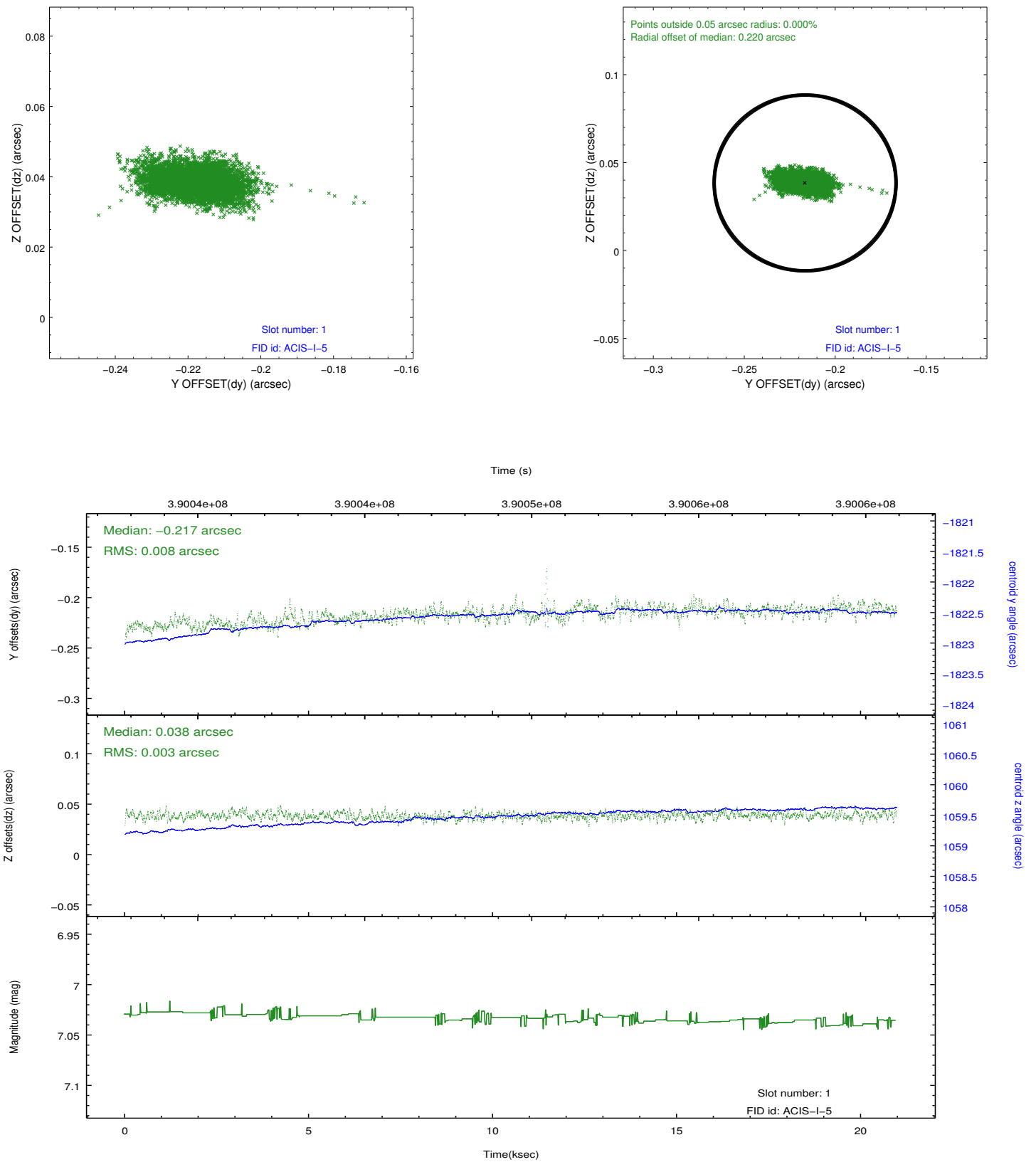


## 2.5 FID Slots

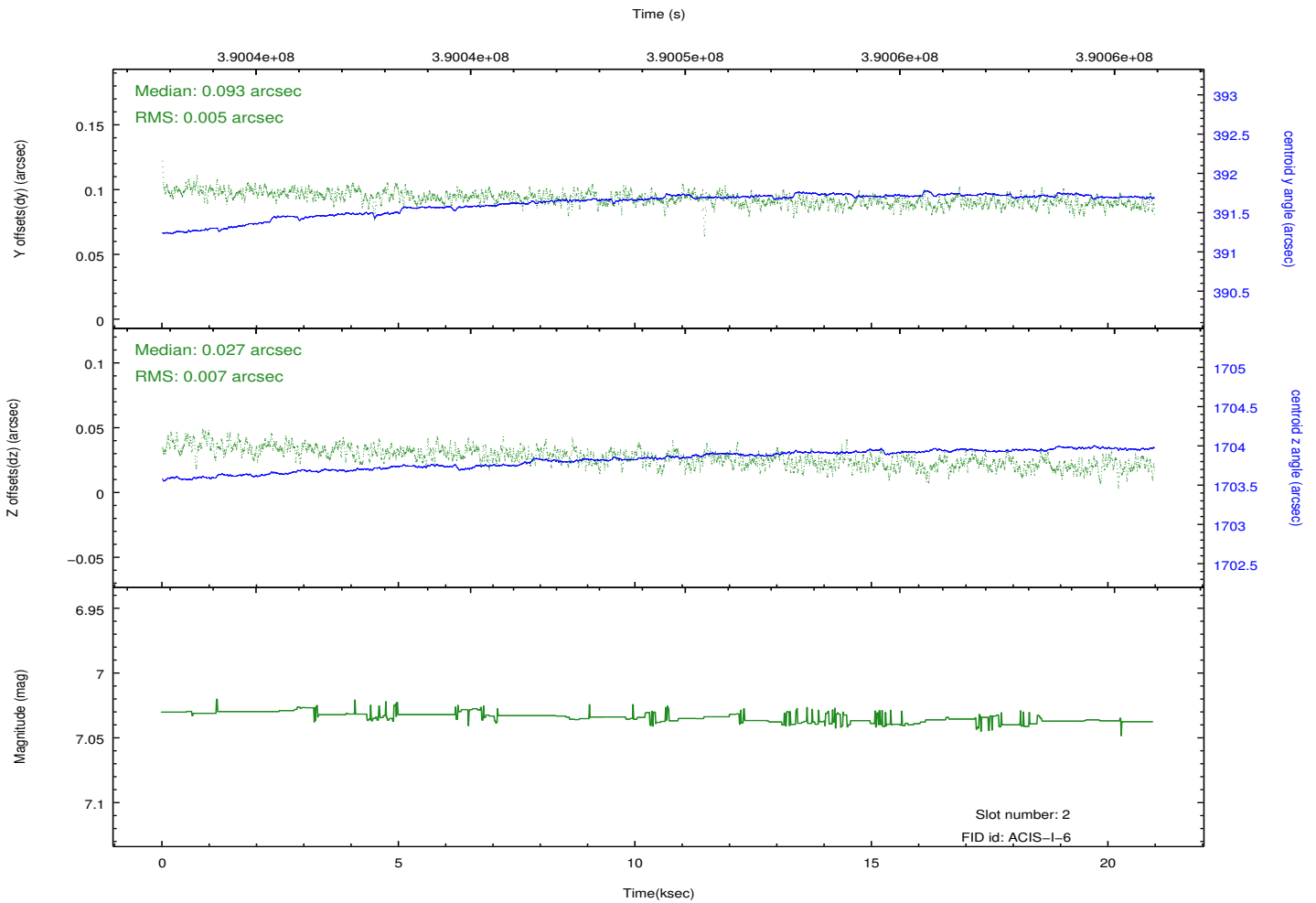
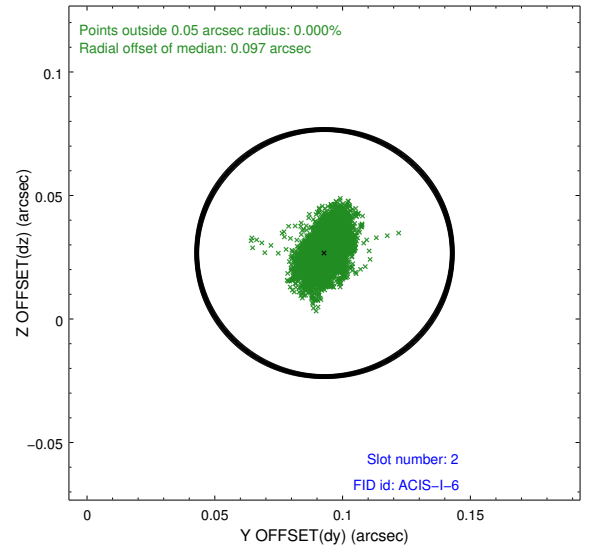
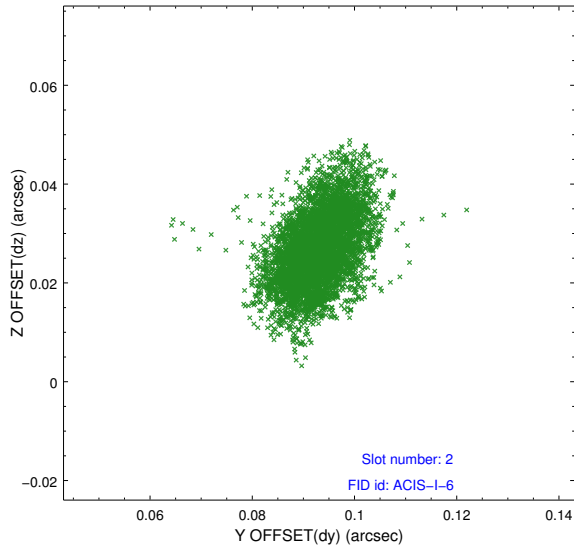
### 2.5.1 Slot 0



## 2.5.2 Slot 1



### 2.5.3 Slot 2



# A Summary

## A.1 Status

V&V Scientist	Jen Lauer
V&V Date (YYYY-MM-DD)	2012.07.02
V&V Edition	1
V&V Disposition and Status	OK
V&V Charge Time	20.060100154281

## A.2 Comments

Joint proposal with HST.

===

Photometry requested but not used. Object too faint for tracking.