

V&V Reference Report

L2 ASCDS Version : 8.4.5

Observation 11535 - L2 Version 3
Chandra X-Ray Center

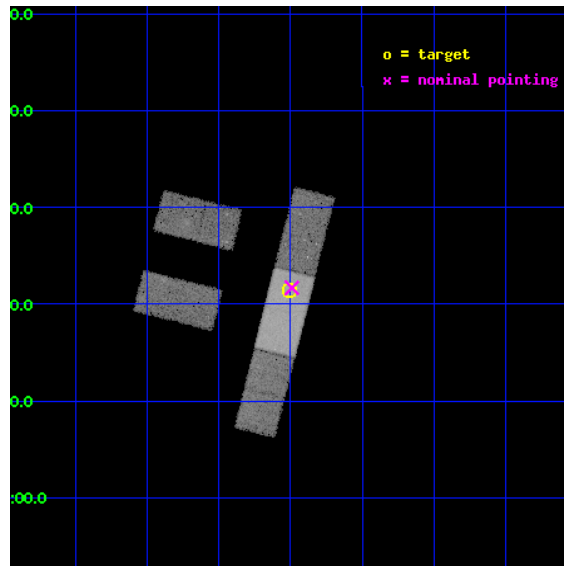
L2 Processing Date : Jun 24 2012

Contents

1	Front	2
2	OBI	3
2.1	OBI	3
2.1.1	Images	3
2.1.2	Bias	3
2.1.3	Parameters	4
2.1.4	Events	4
2.2	Compared Parameters	5
2.3	Aspect	6
2.4	Star Slots	9
2.4.1	Slot 3	9
2.4.2	Slot 4	10
2.4.3	Slot 5	11
2.4.4	Slot 6	12
2.4.5	Slot 7	13
2.5	FID Slots	14
2.5.1	Slot 0	14
2.5.2	Slot 1	15
2.5.3	Slot 2	16
A	Summary	17
A.1	Status	17
A.2	Comments	17

1 Front

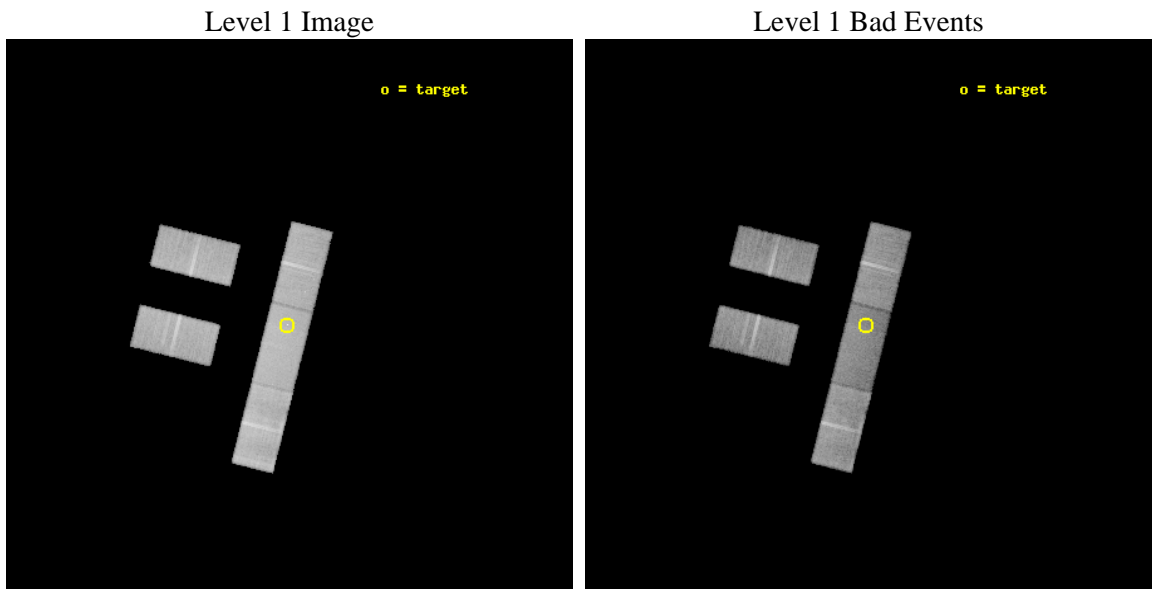
seq_num	702121	Sequence number
obs_id	11535	Observation id
title	The Size of Quasar Non-Thermal/X-ray Emission Regions	Proposal tit
observer	Prof. Christopher Kochanek	Principal investigator
object	Q2237+0305	Source name
dtcycle	0	
cycle	P	events from which exps? Prim/Second/Both
ra_targ	340.12625	Observer's specified target RA [deg]
dec_targ	3.358	Observer's specified target Dec [deg]
ra_nom	340.12277429237	Nominal RA [deg]
dec_nom	3.3613861025034	Nominal Dec [deg]
roll_nom	104.16229451125	Nominal Roll [deg]
revision	3	Processing version of data
ontime	30142.69978869	Sum of GTIs [s]
livetime	29432.172518019	Livetime [s]
ontime2	30140.958748698	Sum of GTIs [s]
ontime3	30140.958798528	Sum of GTIs [s]
ontime6	30137.476818025	Sum of GTIs [s]
ontime7	30142.69978869	Sum of GTIs [s]
ontime8	30142.69978869	Sum of GTIs [s]
l2events	111985	Number of level 2 events



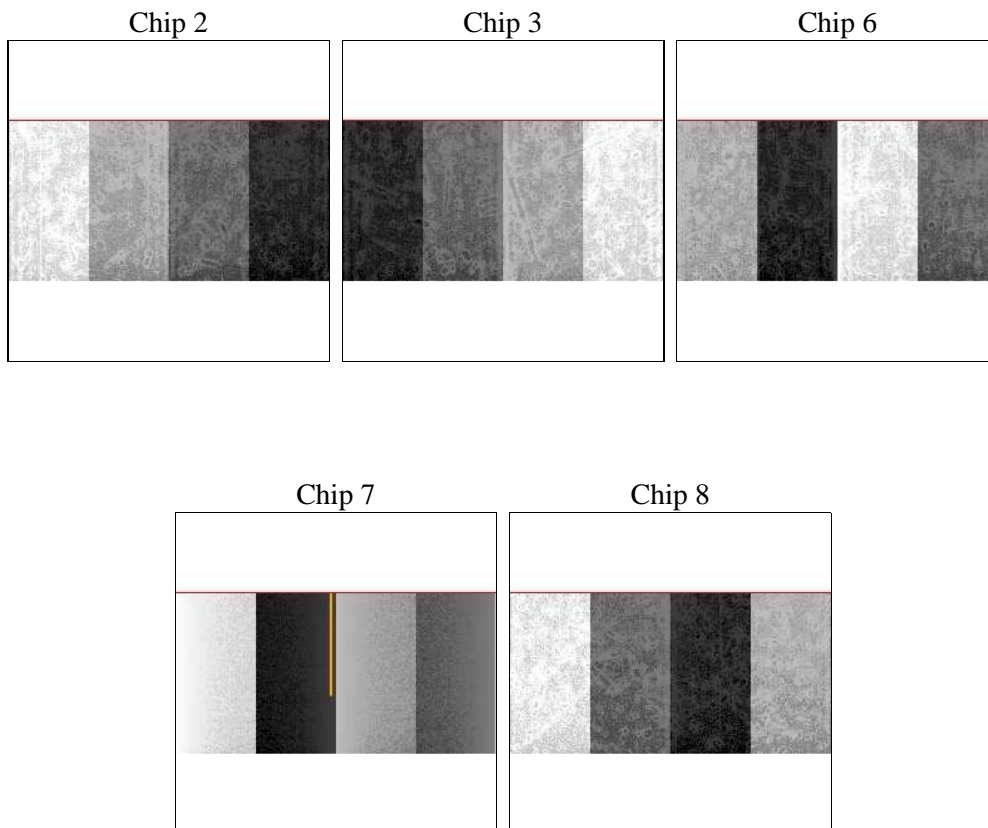
2 OBI

2.1 OBI

2.1.1 Images



2.1.2 Bias



2.1.3 Parameters

obi_num	0	Obi number	sched_exp_time	30000.511000	[s] Scheduled observation exposure time
ascdsver	8.4.5	Processing system revision	ontime	30142.69978869	Sum of GTIs [s]
caldbver	4.4.10	 	ontime2	30140.958748698	Sum of GTIs [s]
date	2012-06-24T21:46:05	Date and time of file creation	ontime3	30140.958798528	Sum of GTIs [s]
revision	3	Processing version of data	ontime6	30137.476818025	Sum of GTIs [s]
			ontime7	30142.69978869	Sum of GTIs [s]
			ontime8	30142.69978869	Sum of GTIs [s]
			l1events	688729	Number of level 1 events

2.1.4 Events

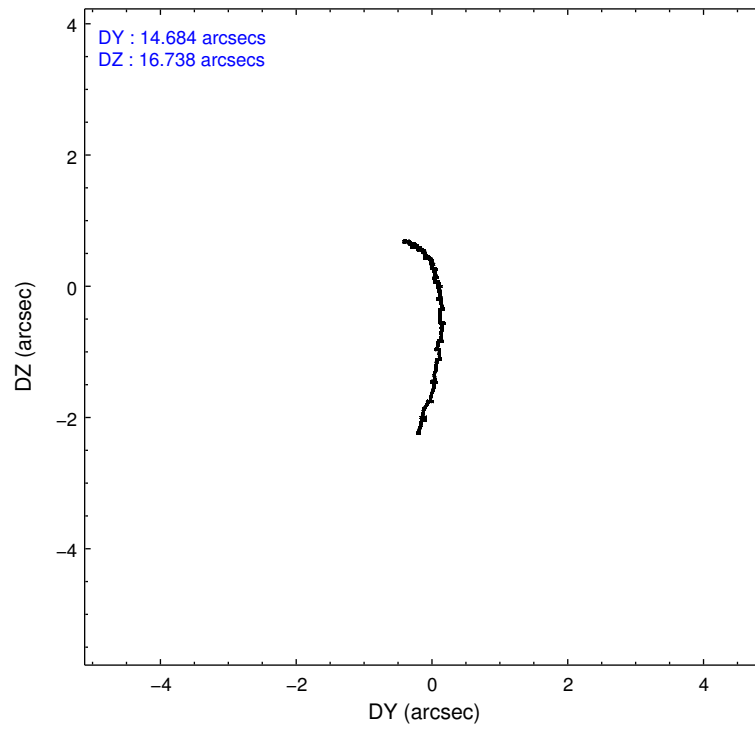
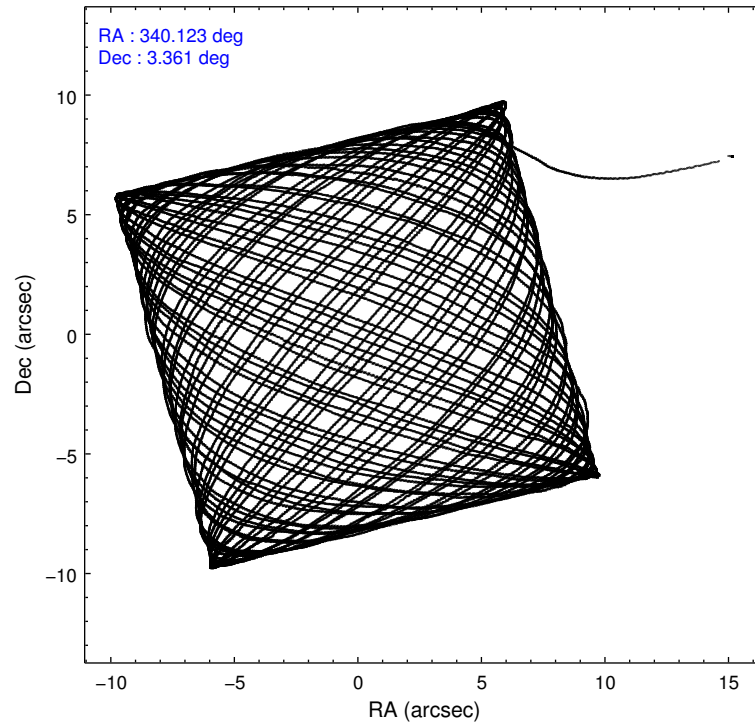
	ccd 2	ccd 3	ccd 6	ccd 7	ccd 8
level 1 events	123683	123980	127306	147629	166131
rejected events	110464	111495	113223	80928	125670
rejected %	89%	89%	88%	54%	75%

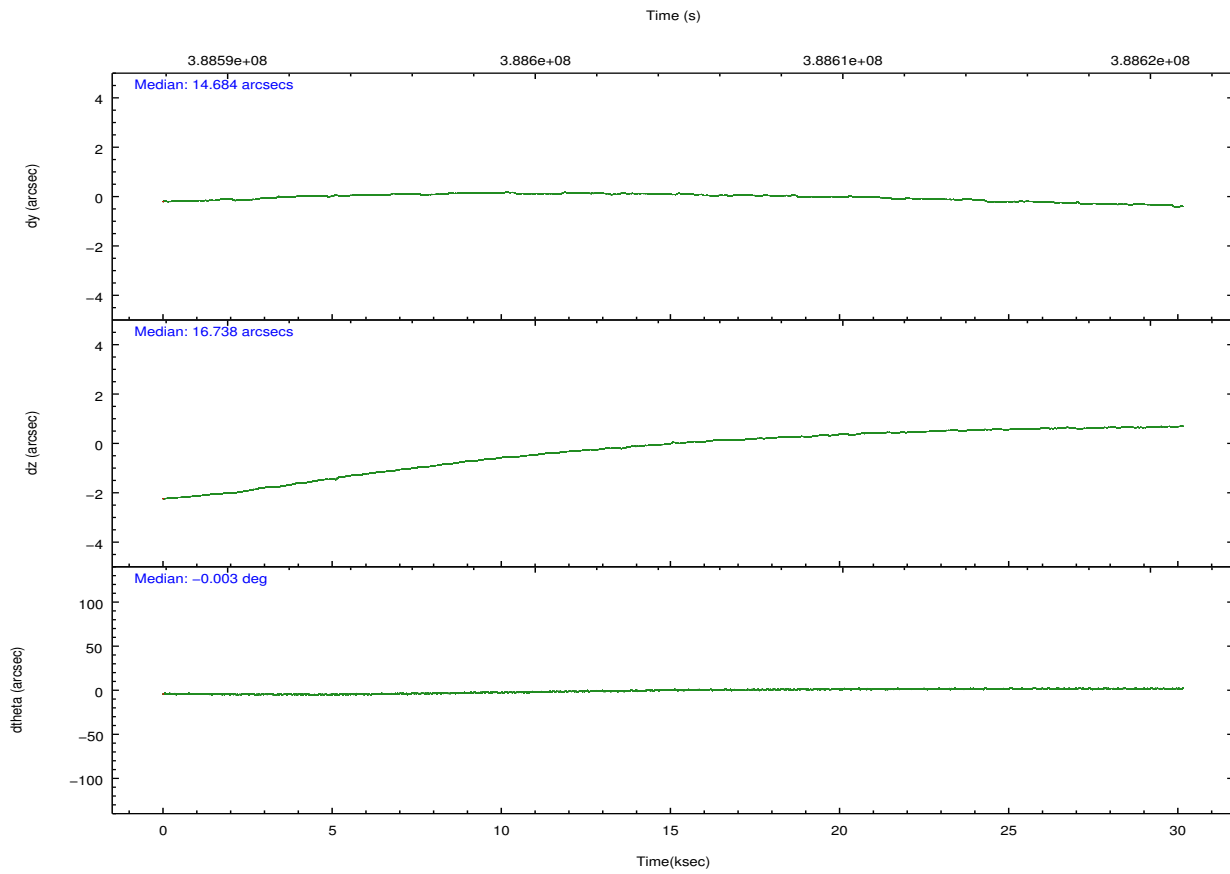
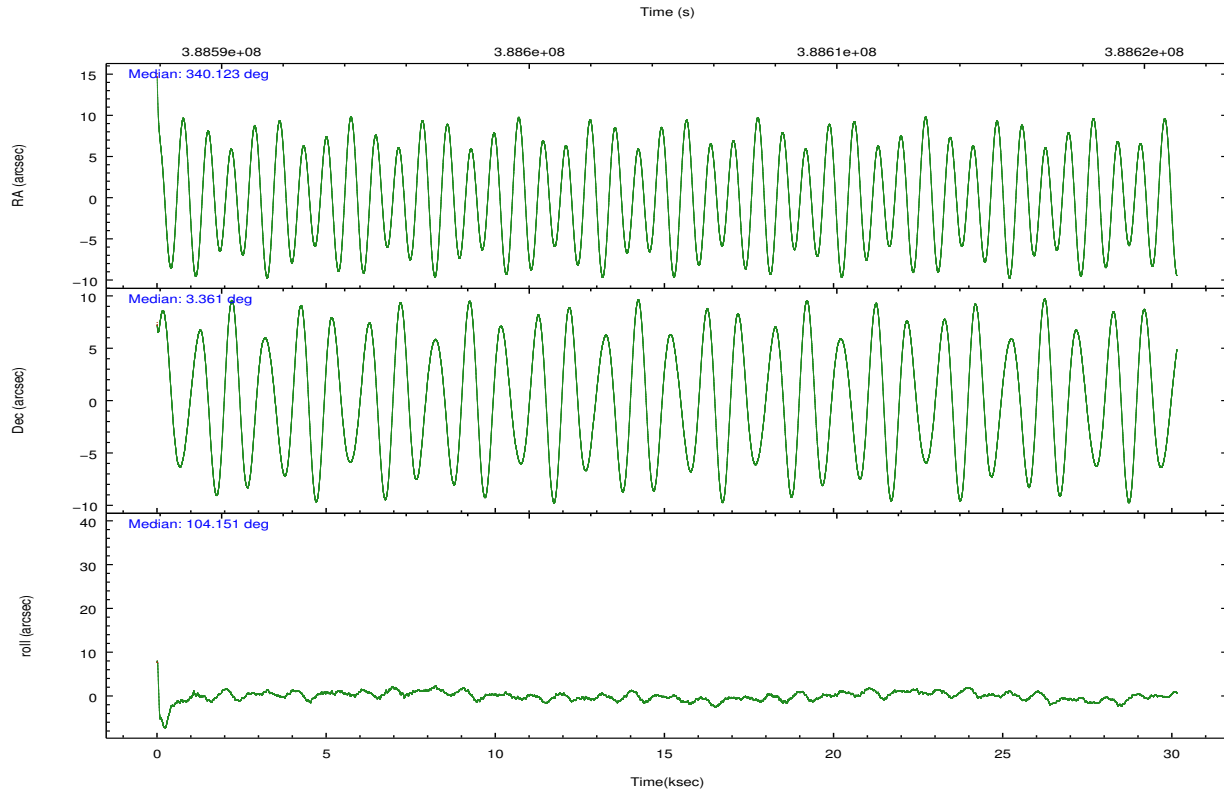
	ccd 2	ccd 3	ccd 6	ccd 7	ccd 8
grade 0 events	4689	4271	4742	6753	11696
	3%	3%	3%	4%	7%
grade 1 events	58	72	52	176	110
	0%	0%	0%	0%	0%
grade 2 events	2969	2743	3063	13973	9456
	2%	2%	2%	9%	5%
grade 3 events	1677	1686	1816	6935	4400
	1%	1%	1%	4%	2%
grade 4 events	1726	1627	1793	6645	4128
	1%	1%	1%	4%	2%
grade 5 events	4411	5330	5345	15501	7672
	3%	4%	4%	10%	4%
grade 6 events	2400	2449	2948	33756	11438
	1%	1%	2%	22%	6%
grade 7 events	105753	105802	107547	63890	117231
	85%	85%	84%	43%	70%

2.2 Compared Parameters

Parameter	Planned	Actual	Parameter	Planned	Actual
Instrument	ACIS	ACIS	Obspar format version number	7	7
Detector	ACIS-23678	ACIS-23678	Obspar file type	PREDICTED	ACTUAL
Grating	NONE	NONE	Obspar update status	NONE	UPDATED
Data mode	VFAINT	VFAINT	CCD I0 on	N	N
Observation mode	POINTING	POINTING	CCD I1 on	N	N
[deg] Pointing RA	340.142119	340.1227742923686	CCD I2 on	O4	Y
[deg] Pointing Dec	3.342023	3.361386102503444	CCD I3 on	O3	Y
[deg] Pointing Roll	104.004536	104.1622945112466	CCD S0 on	N	N
[mm] SIM focus pos	-0.684267	-0.6828225247311905	CCD S1 on	N	N
[mm] SIM defocus	0	0.001444936568705701	CCD S2 on	O1	Y
[mm] SIM translation stage pos	-190.132523	-190.1400660498719	CCD S3 on	Y	Y
[mm] SIM translation stage offset	0	0.00754346686406393	CCD S4 on	O2	Y
[s] Observation start time (MET)	388589559.184000	388588463.37611	CCD S5 on	N	N
Observation start date	2010-04-25T13:31:33	2010-04-25T13:14:23	Number of optional ACIS chips dropped	0	0
[s] Observation end time (MET)	388619560.184000	388619779.6902	On-chip summing requested	N	N
Observation end date	2010-04-25T21:51:34	2010-04-25T21:56:19	Subarray requested	CUSTOM	1/2
Read mode	TIMED	TIMED	Subarray start row	257	257
			Subarray row count	512	512
			Alternating exposures requested	N	N
			[s] Primary exposure time	0.000000	1.7

2.3 Aspect



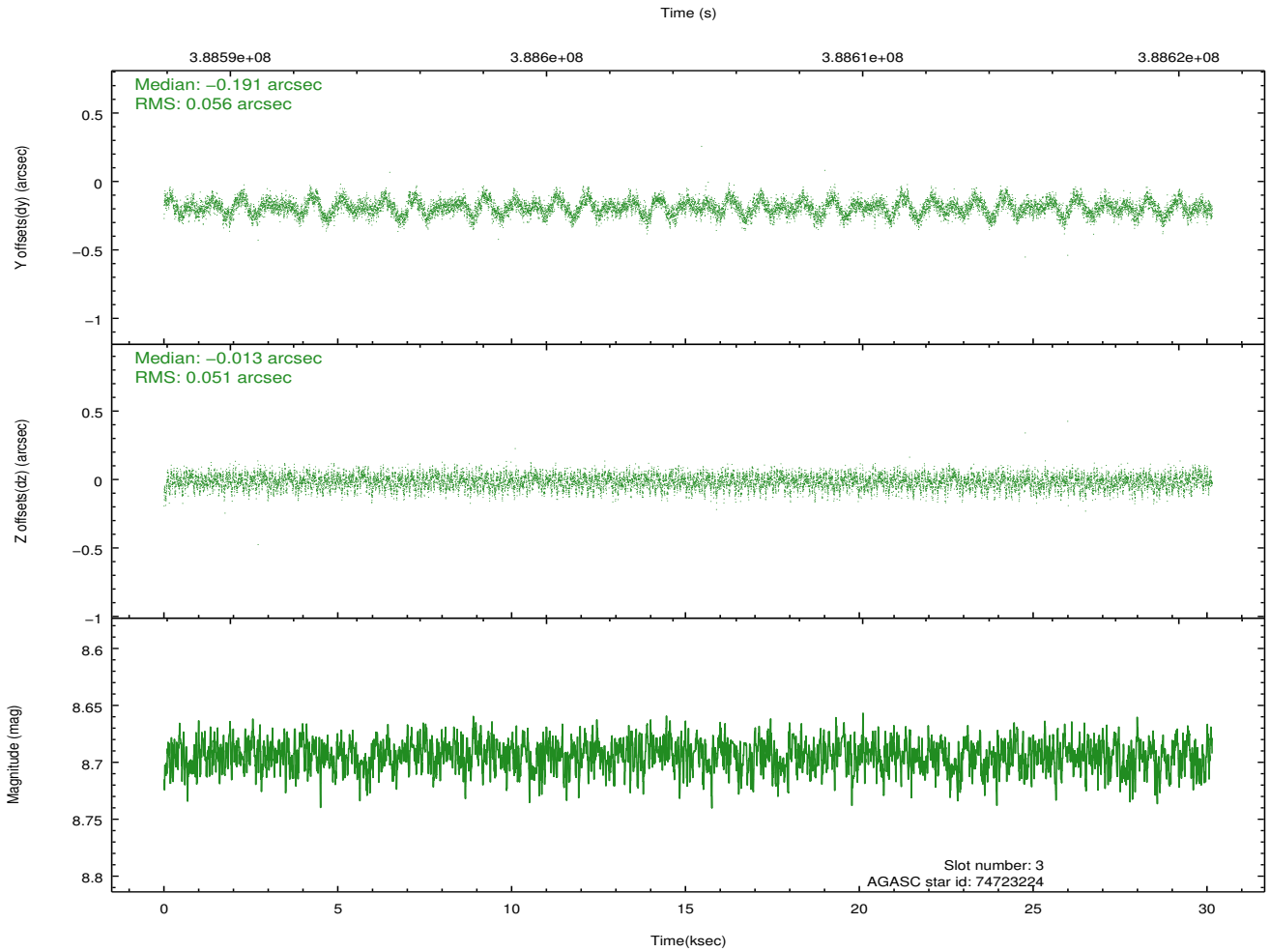
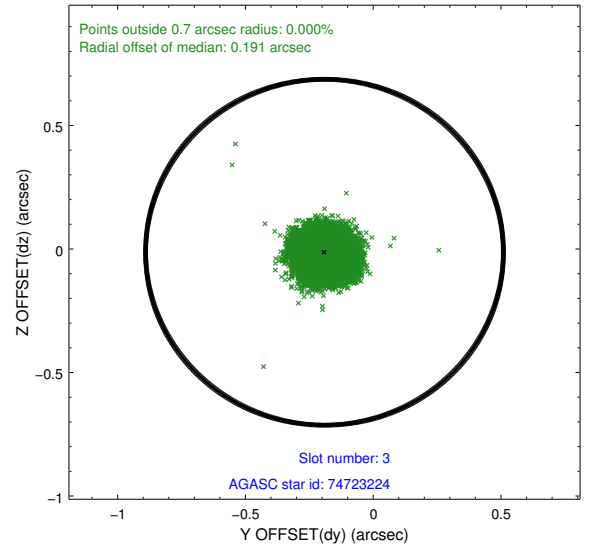
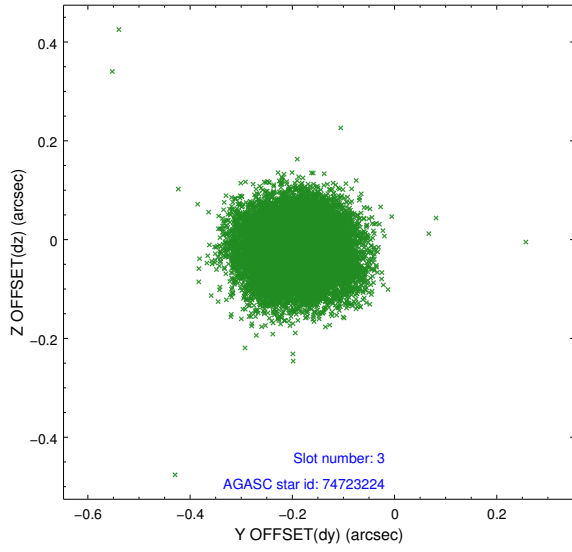


Slot Statistics

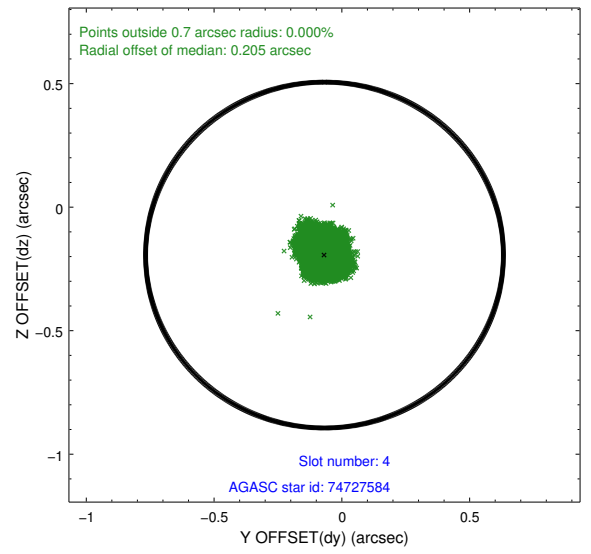
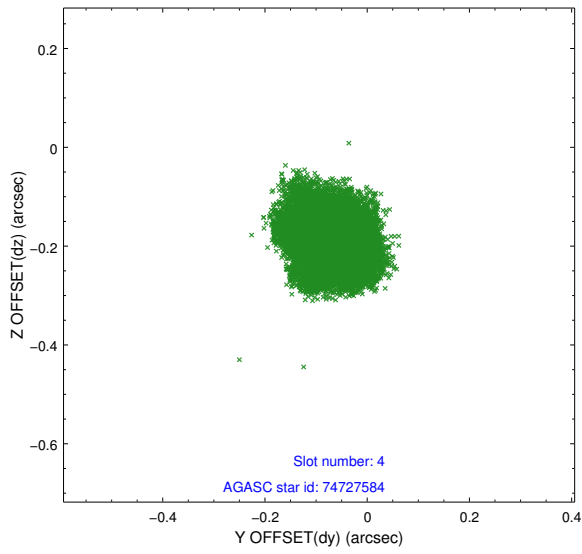
slot	status	id	mag	n_pts	med_dy	med_dz	dr1	dr2	ra	dec	mean_y	mean_z
0	FID	ACIS-S-2	6.95	7353	-0.072	-0.038	0.021	0.029	0.000000	0.000000	-767.69	-1737.88
1	FID	ACIS-S-4	7.03	7353	0.189	0.045	0.011	0.018	0.000000	0.000000	2145.83	170.58
2	FID	ACIS-S-5	7.07	7353	-0.148	0.001	0.021	0.031	0.000000	0.000000	-1820.51	164.33
3	GUIDE	74723224	8.69	14698	-0.191	-0.013	0.080	0.128	339.594650	3.574222	1287.38	1706.38
4	GUIDE	74727584	6.95	14705	-0.068	-0.194	0.069	0.106	339.633744	3.463732	867.62	1666.42
5	GUIDE	74842128	8.54	14697	0.380	0.091	0.068	0.107	340.118134	3.132788	-709.49	266.23
6	GUIDE	74854992	8.28	14701	-0.010	0.231	0.056	0.089	340.342808	3.603730	739.91	-927.02
7	GUIDE	74855640	8.84	14690	-0.108	-0.112	0.079	0.128	340.341123	3.746937	1241.83	-1046.41

2.4 Star Slots

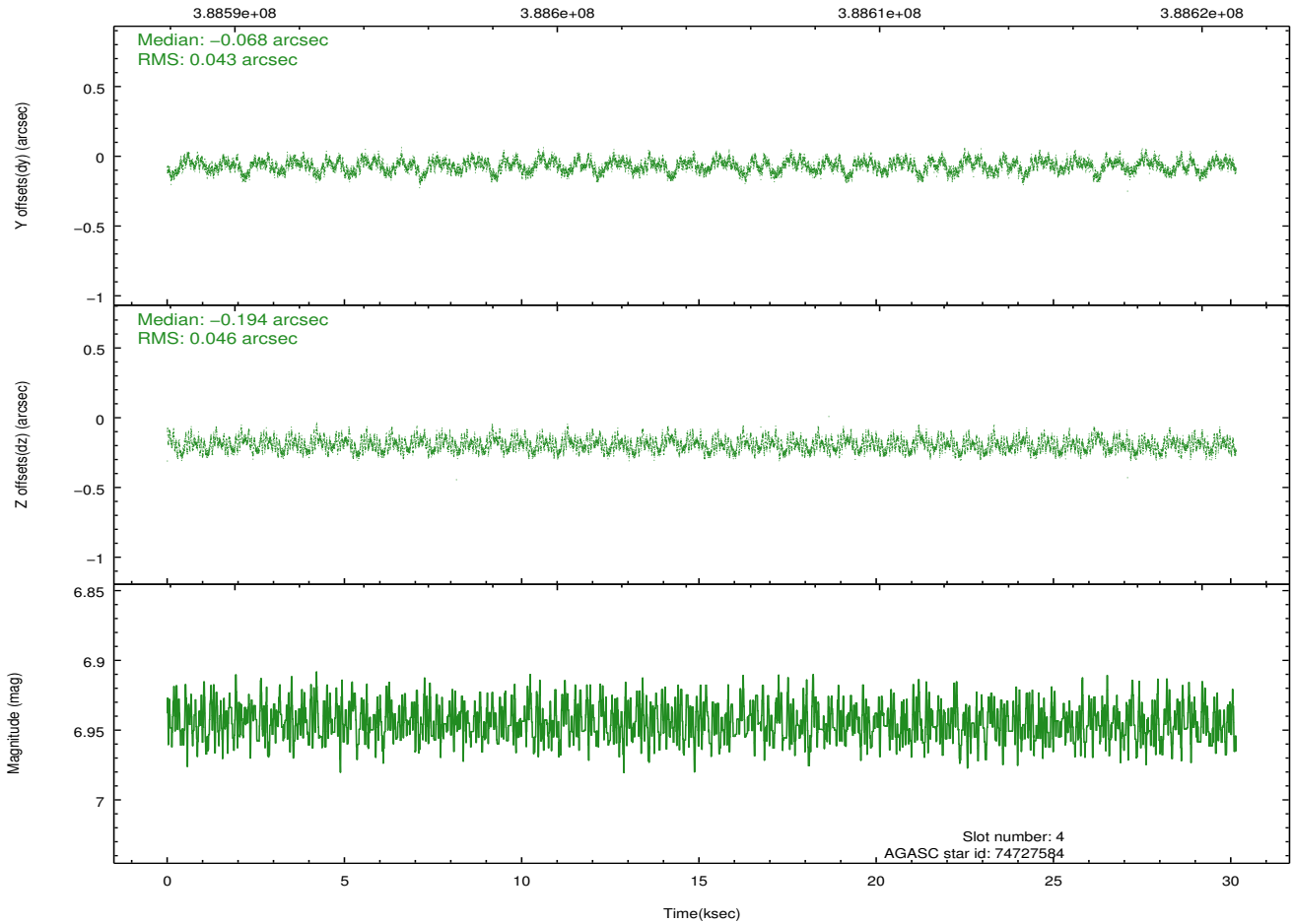
2.4.1 Slot 3



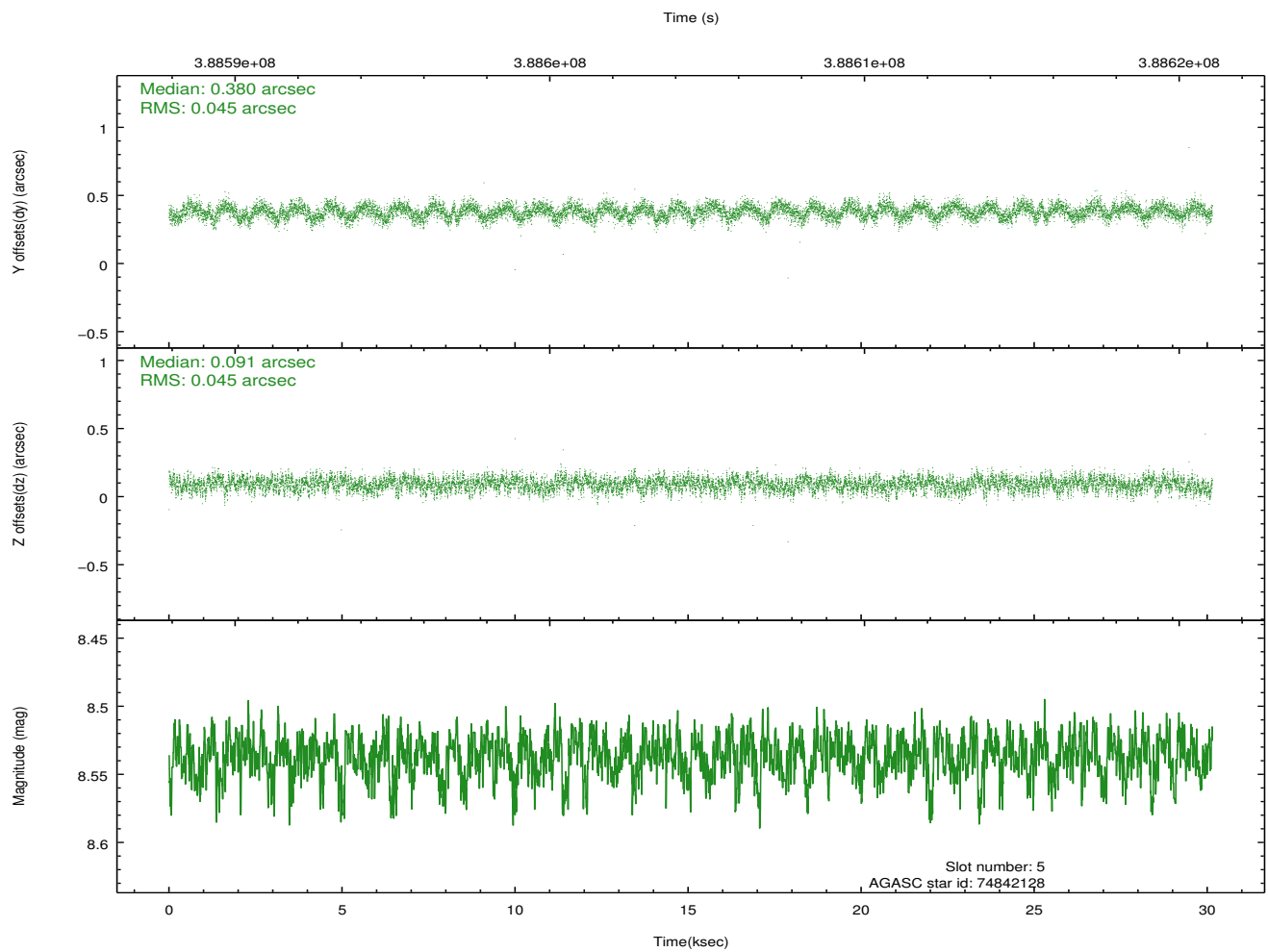
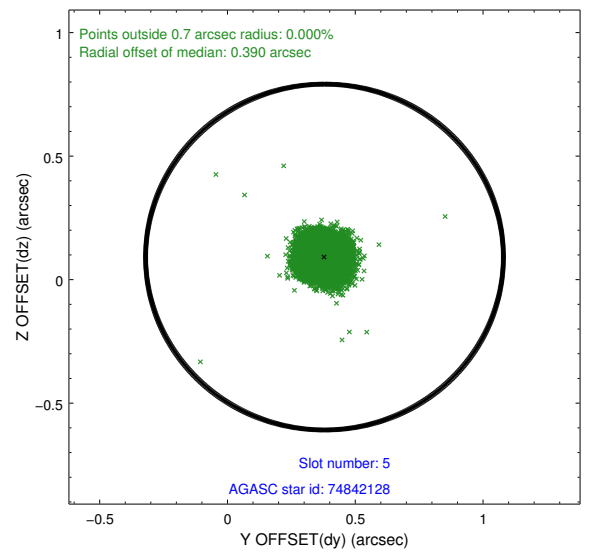
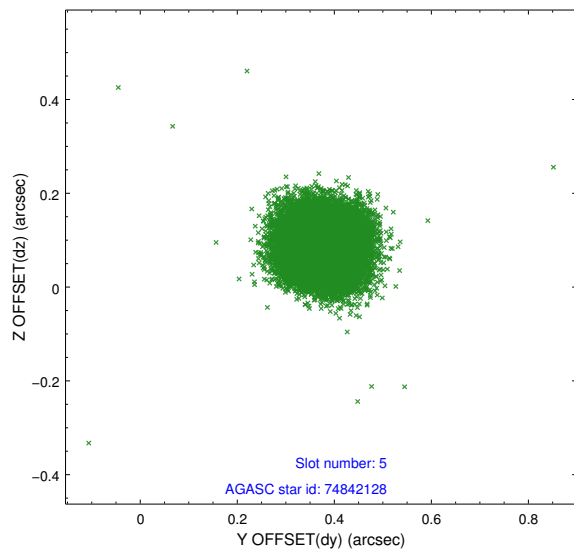
2.4.2 Slot 4



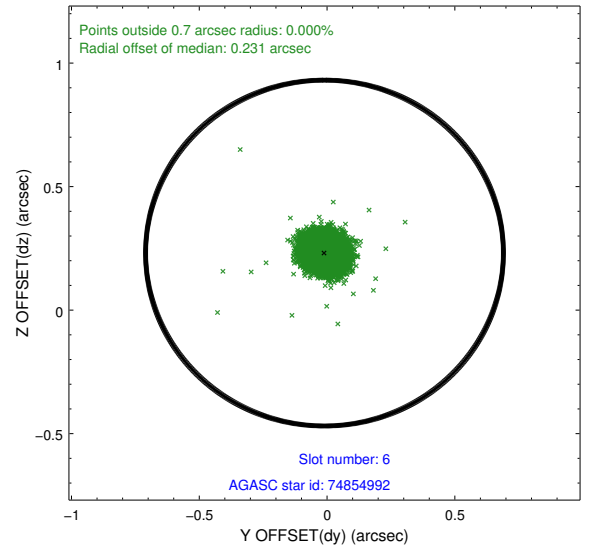
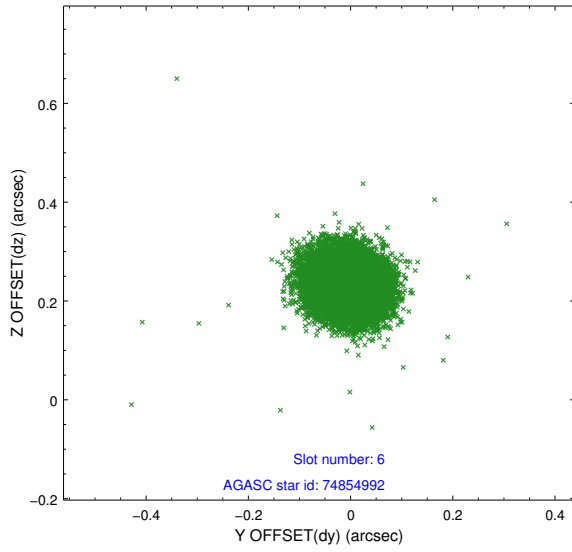
Time (s)



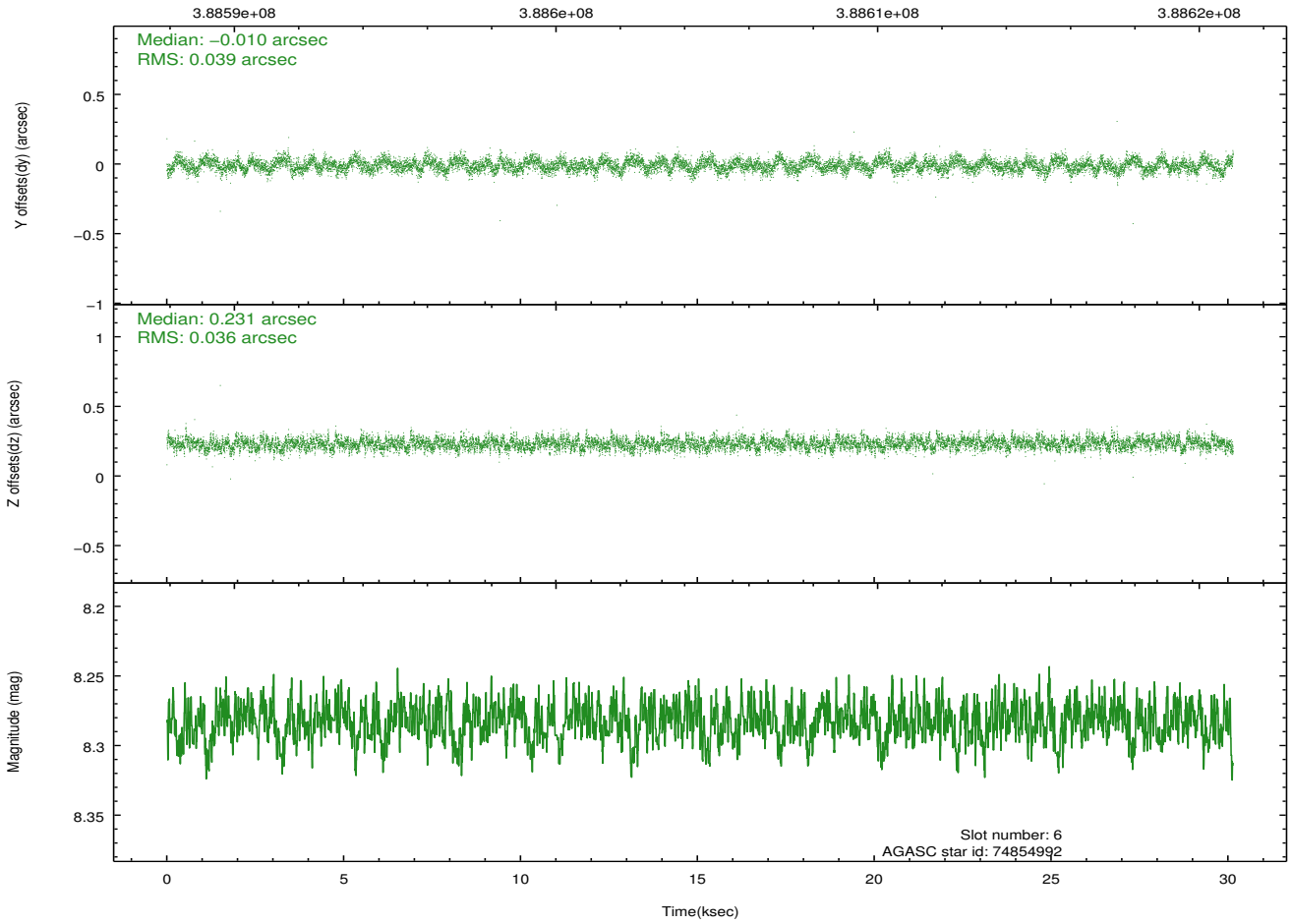
2.4.3 Slot 5



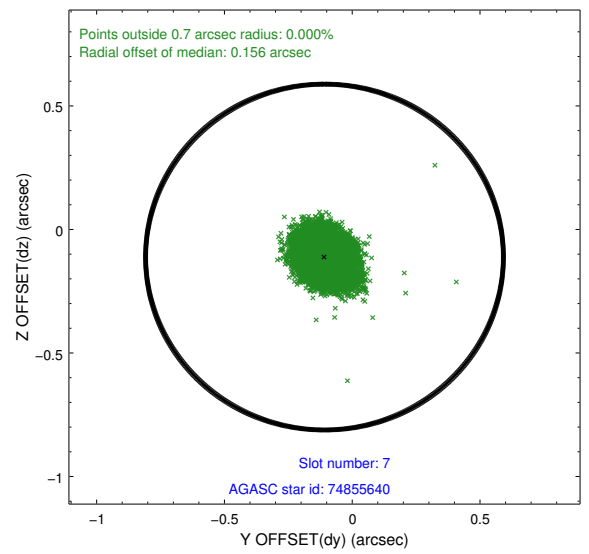
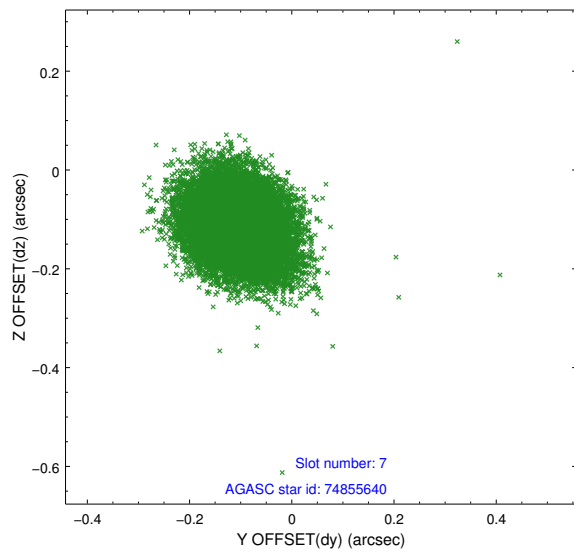
2.4.4 Slot 6



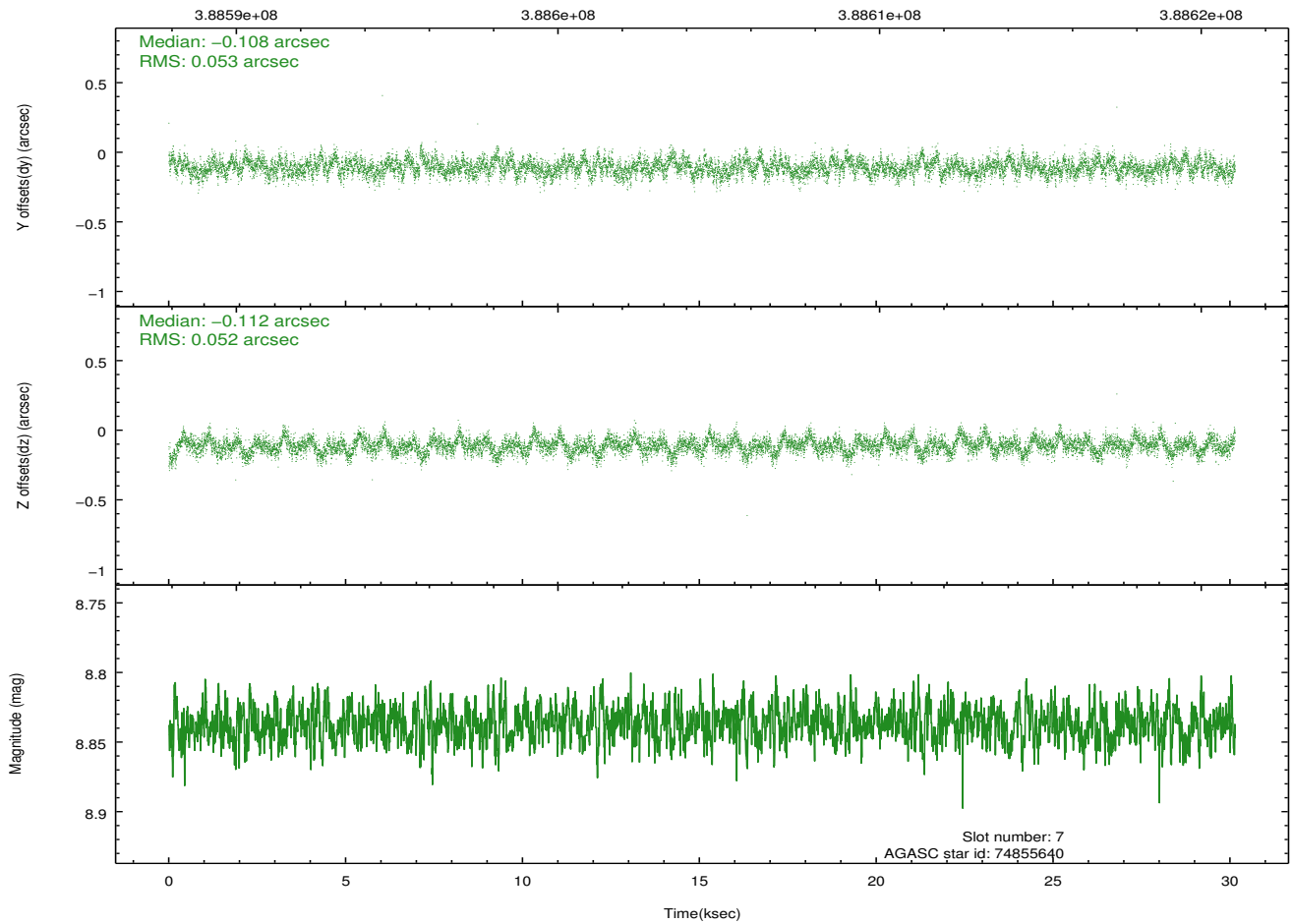
Time (s)



2.4.5 Slot 7

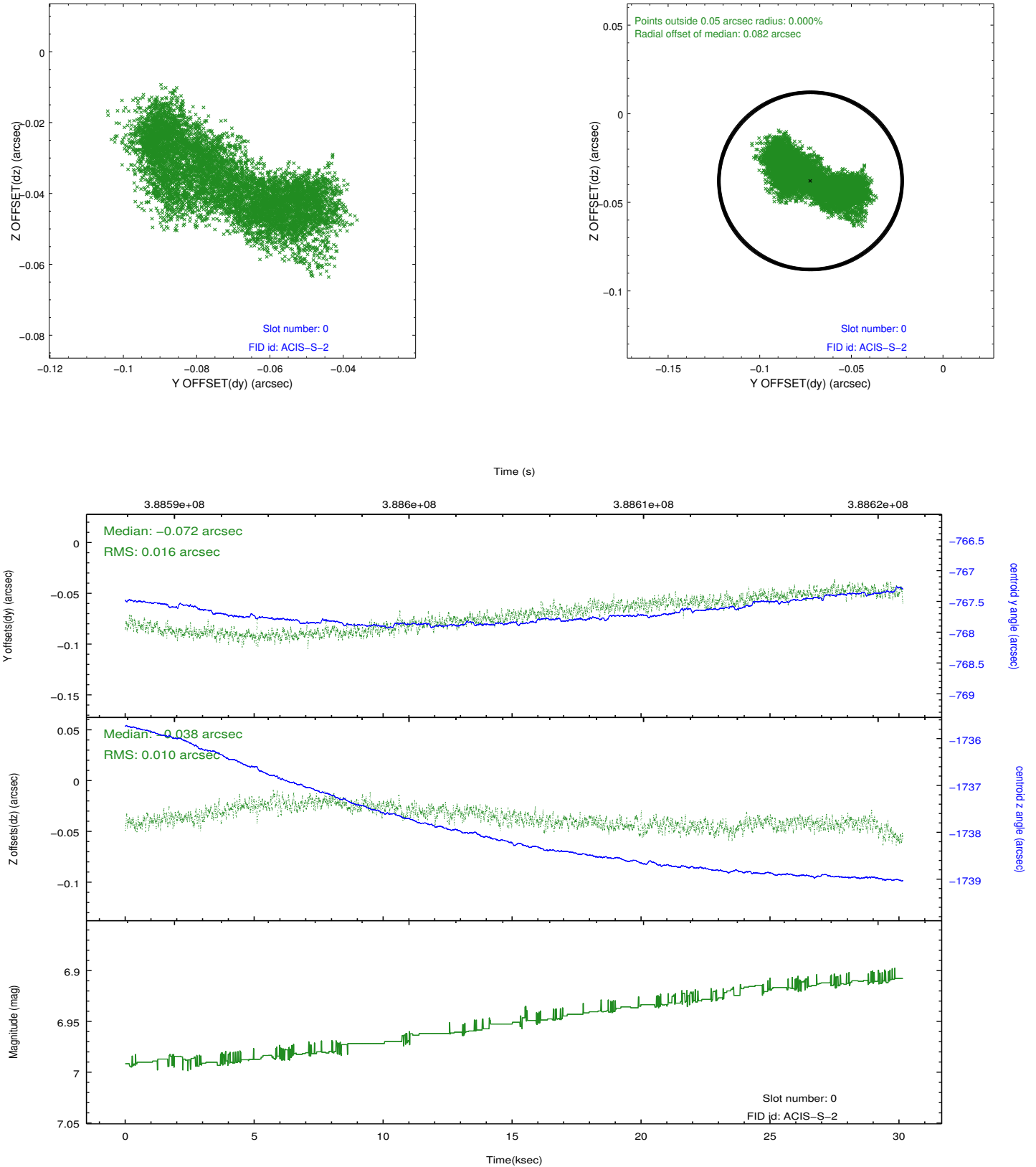


Time (s)

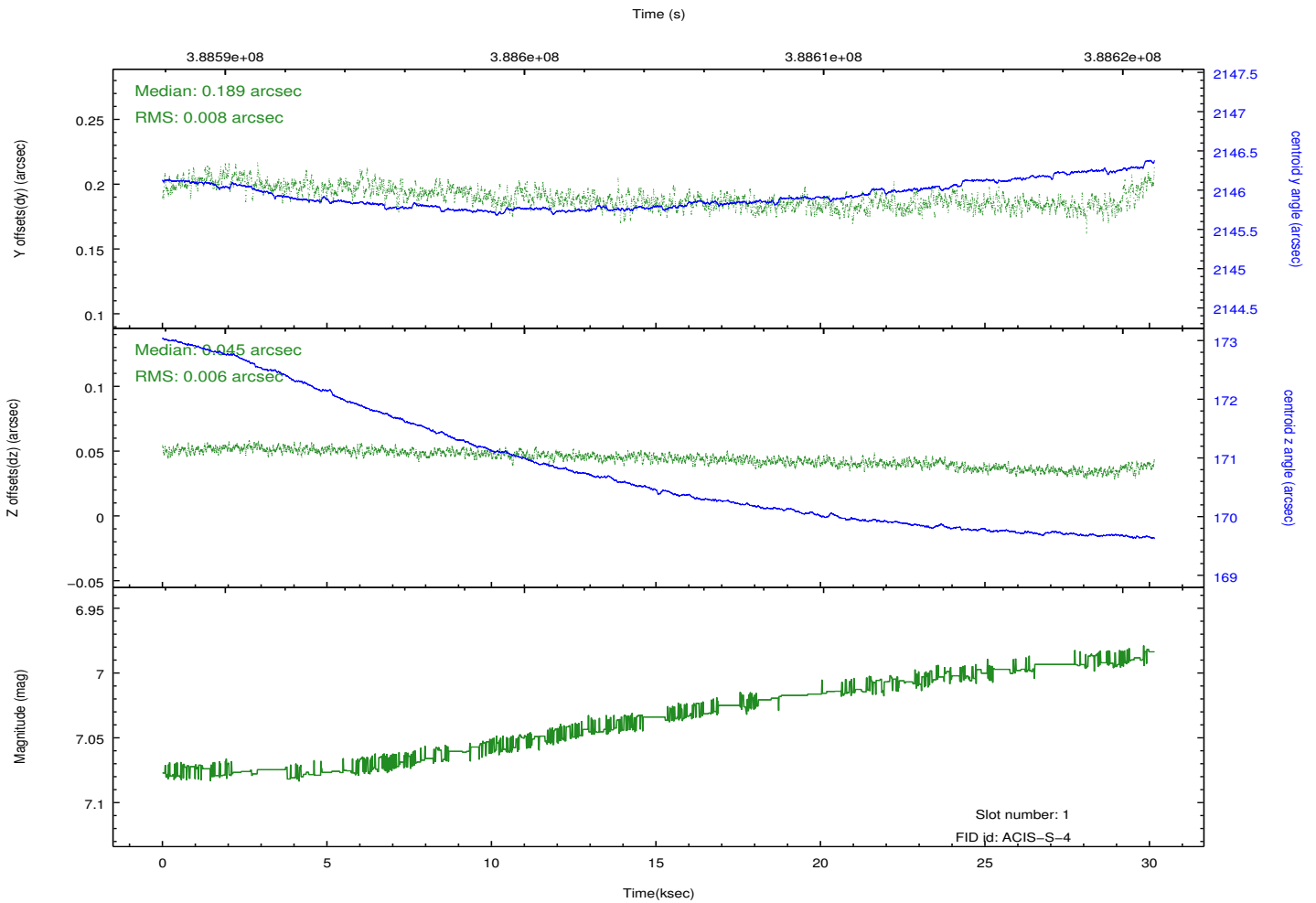
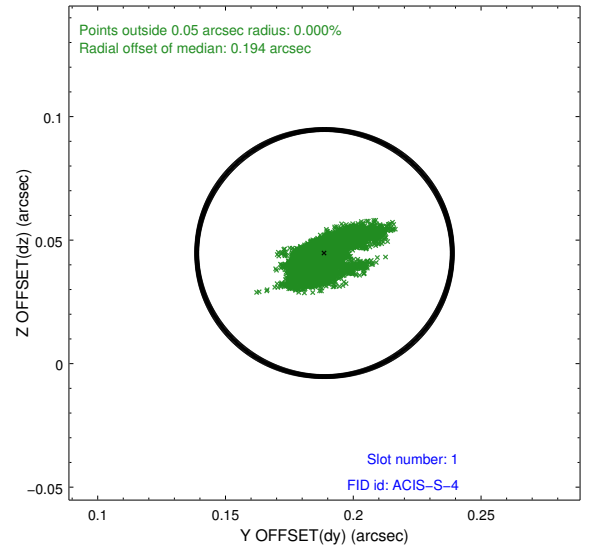
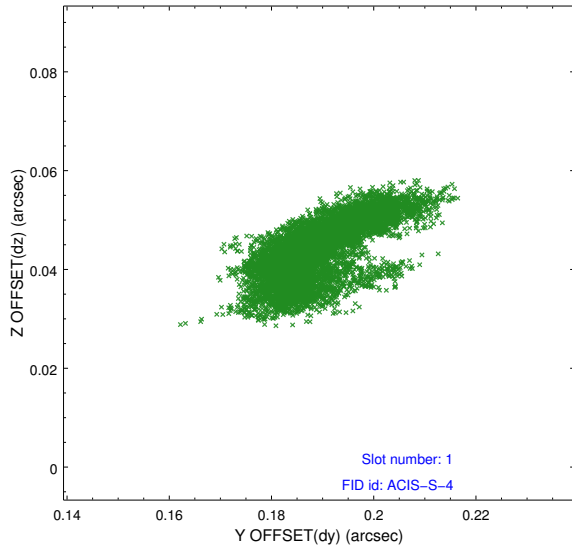


2.5 FID Slots

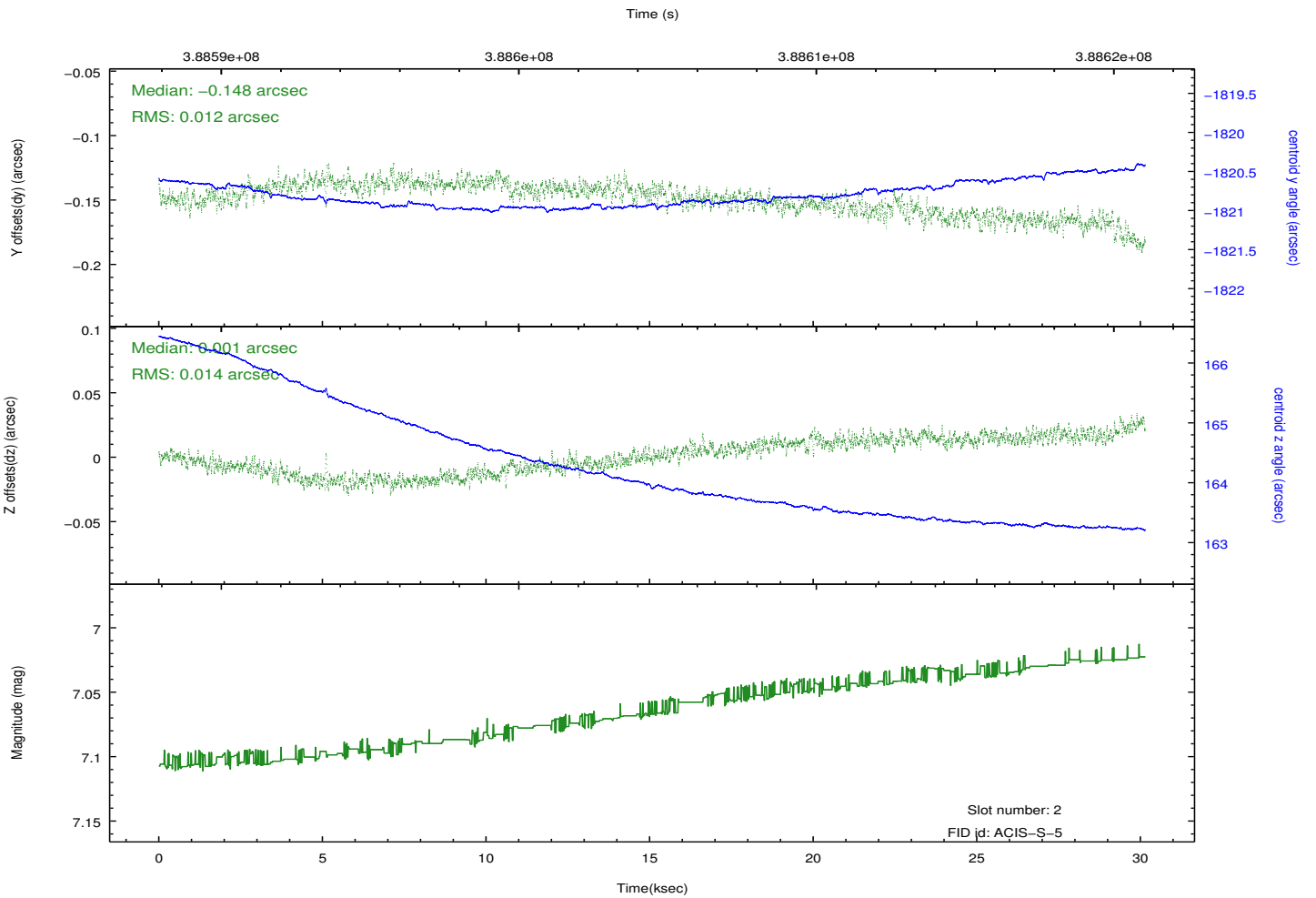
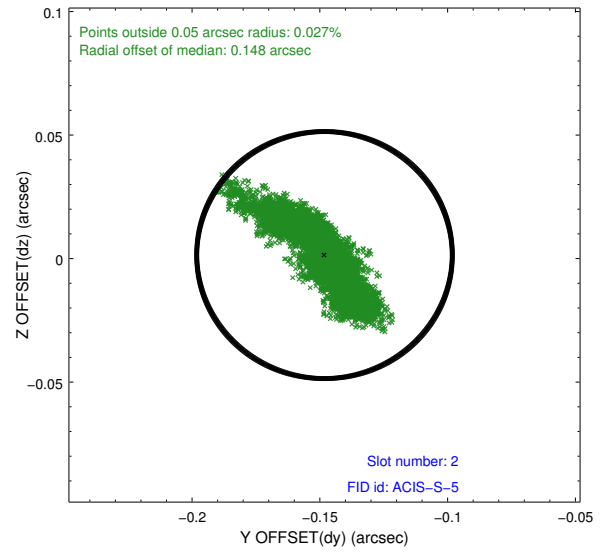
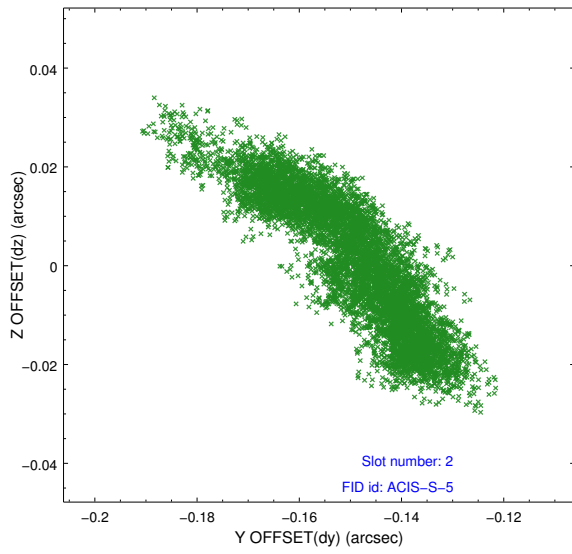
2.5.1 Slot 0



2.5.2 Slot 1



2.5.3 Slot 2



A Summary

A.1 Status

V&V Scientist	Jen Lauer
V&V Date (YYYY-MM-DD)	2012.07.02
V&V Edition	1
V&V Disposition and Status	OK
V&V Charge Time	30.14269978869

A.2 Comments