

V&V Reference Report

L2 ASCDS Version : 8.4.5

Observation 11565 - L2 Version 3
Chandra X-Ray Center

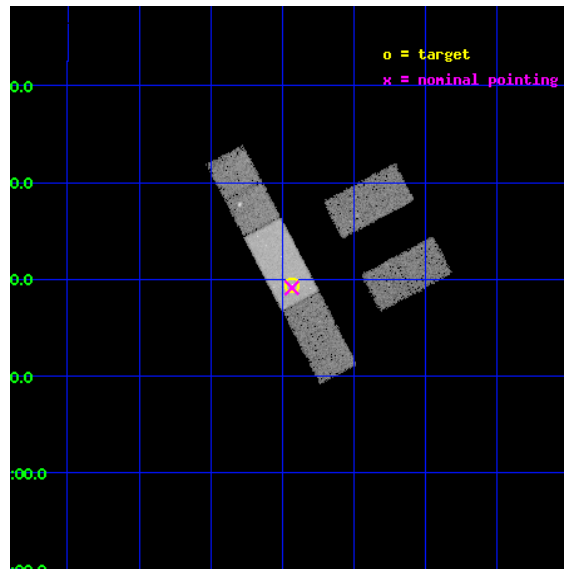
L2 Processing Date : Jun 28 2012

Contents

1	Front	2
2	OBI	3
2.1	OBI	3
2.1.1	Images	3
2.1.2	Bias	3
2.1.3	Parameters	4
2.1.4	Events	4
2.2	Compared Parameters	5
2.3	Aspect	6
2.4	Star Slots	9
2.4.1	Slot 3	9
2.4.2	Slot 4	10
2.4.3	Slot 5	11
2.4.4	Slot 6	12
2.4.5	Slot 7	13
2.5	FID Slots	14
2.5.1	Slot 0	14
2.5.2	Slot 1	15
2.5.3	Slot 2	16
A	Summary	17
A.1	Status	17
A.2	Comments	17

1 Front

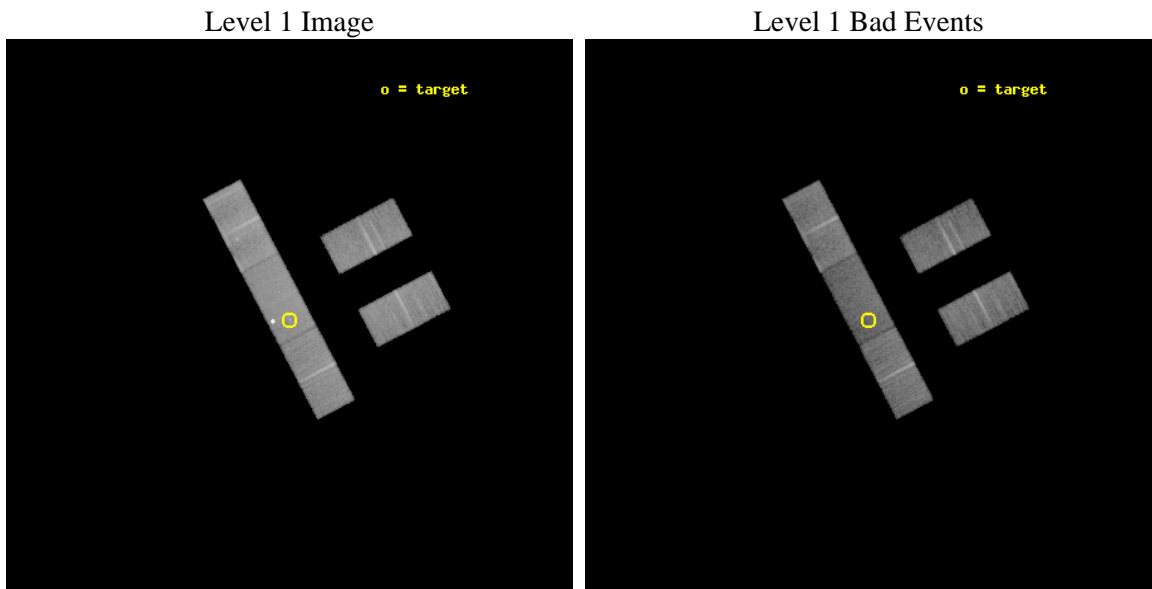
seq_num	702151	Sequence number
obs_id	11565	Observation id
title	The Size of Quasar Non-Thermal/X-ray Emission Regions	Proposal tit
observer	Prof. Christopher Kochanek	Principal investigator
object	SDSS0924+0219	Source name
dtcycle	0	
cycle	P	events from which exps? Prim/Second/Both
ra_targ	141.232917	Observer's specified target RA [deg]
dec_targ	2.323583	Observer's specified target Dec [deg]
ra_nom	141.23323985431	Nominal RA [deg]
dec_nom	2.3187718060796	Nominal Dec [deg]
roll_nom	242.23655111995	Nominal Roll [deg]
revision	3	Processing version of data
ontime	22065.999845326	Sum of GTIs [s]
liveltime	21545.857497274	Livetime [s]
ontime2	22065.999845326	Sum of GTIs [s]
ontime3	22065.999845326	Sum of GTIs [s]
ontime6	22064.258835137	Sum of GTIs [s]
ontime7	22065.999845326	Sum of GTIs [s]
ontime8	22064.258835196	Sum of GTIs [s]
l2events	82074	Number of level 2 events



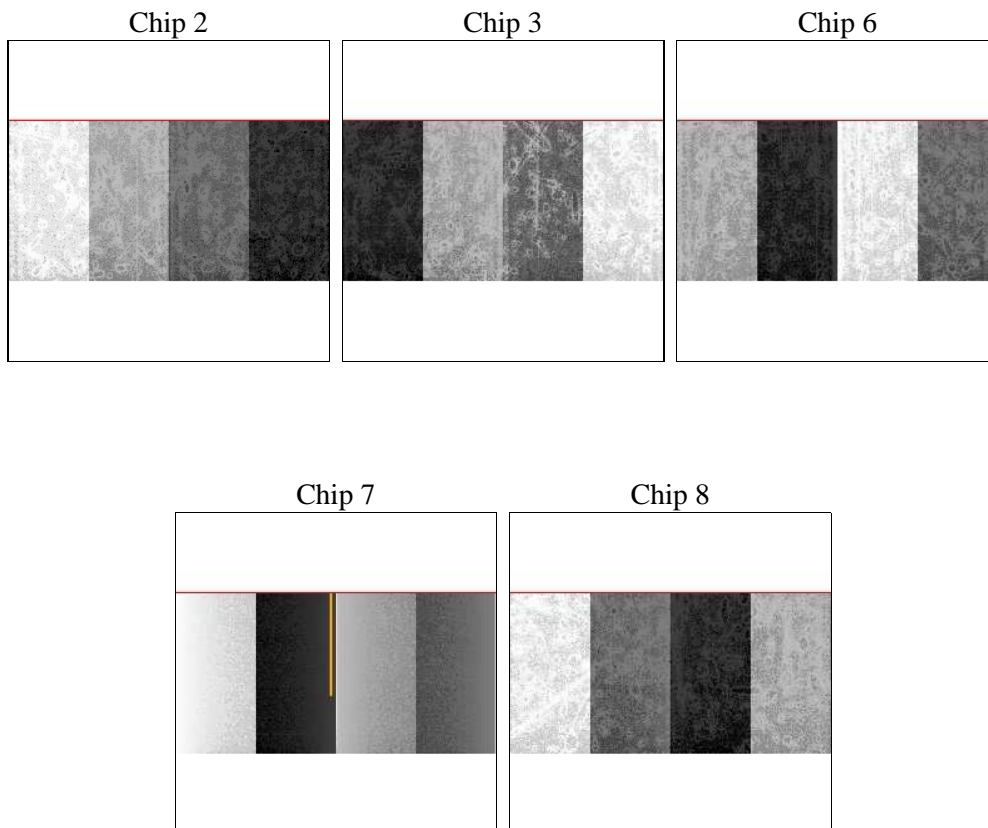
2 OBI

2.1 OBI

2.1.1 Images



2.1.2 Bias



2.1.3 Parameters

obi_num	0	Obi number	sched_exp_time	22000.817000	[s] Scheduled observation exposure time
ascdsver	8.4.5	Processing system revision	ontime	22065.999845326	Sum of GTIs [s]
caldbver	4.5.0	 	ontime2	22065.999845326	Sum of GTIs [s]
date	2012-06-28T22:14:00	Date and time of file creation	ontime3	22065.999845326	Sum of GTIs [s]
revision	3	Processing version of data	ontime6	22064.258835137	Sum of GTIs [s]
			ontime7	22065.999845326	Sum of GTIs [s]
			ontime8	22064.258835196	Sum of GTIs [s]
			l1events	503669	Number of level 1 events

2.1.4 Events

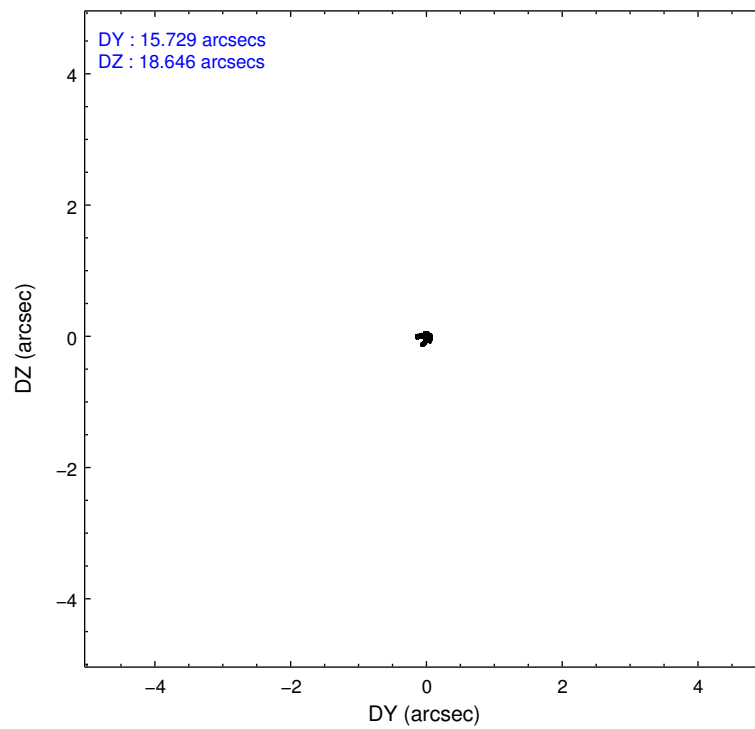
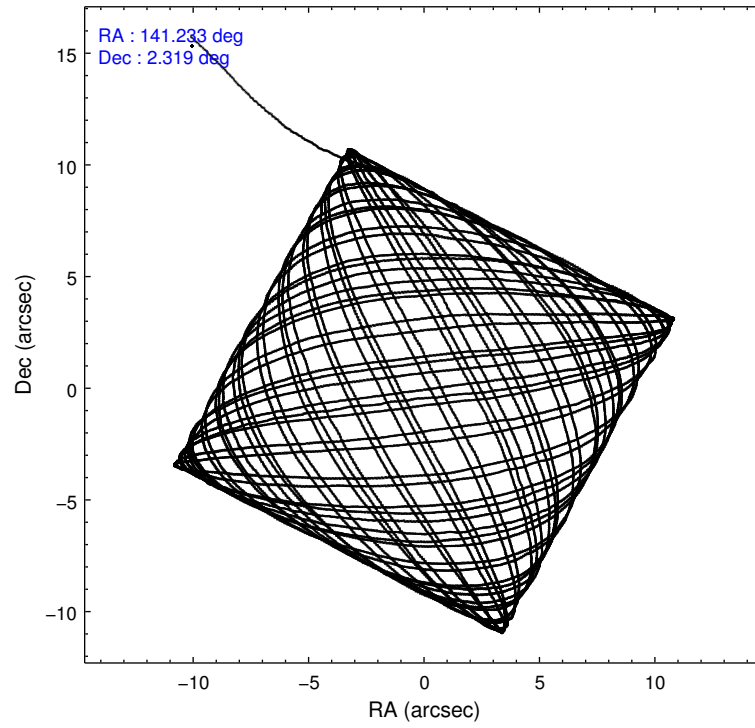
	ccd 2	ccd 3	ccd 6	ccd 7	ccd 8
level 1 events	90575	84114	91162	117906	119912
rejected events	81196	75023	81099	56200	88888
rejected %	89%	89%	88%	47%	74%

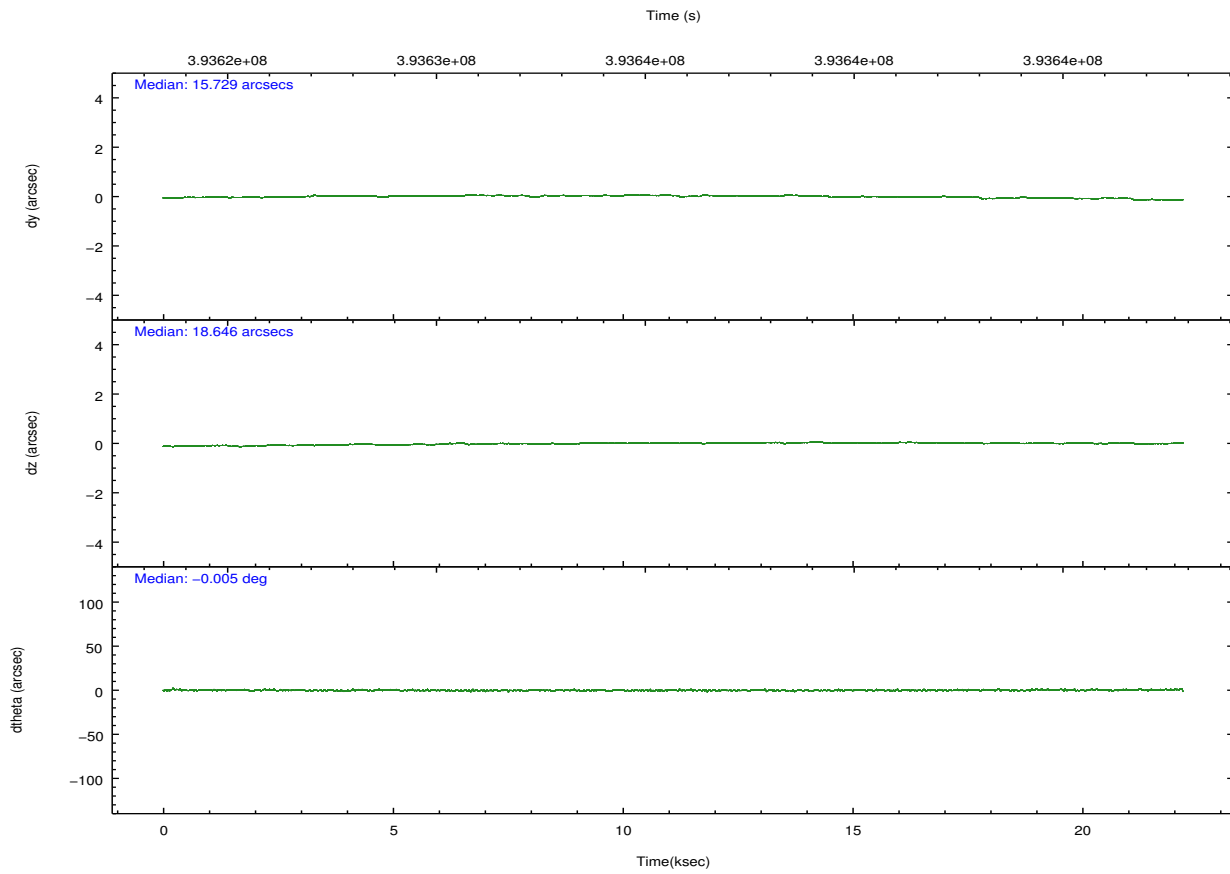
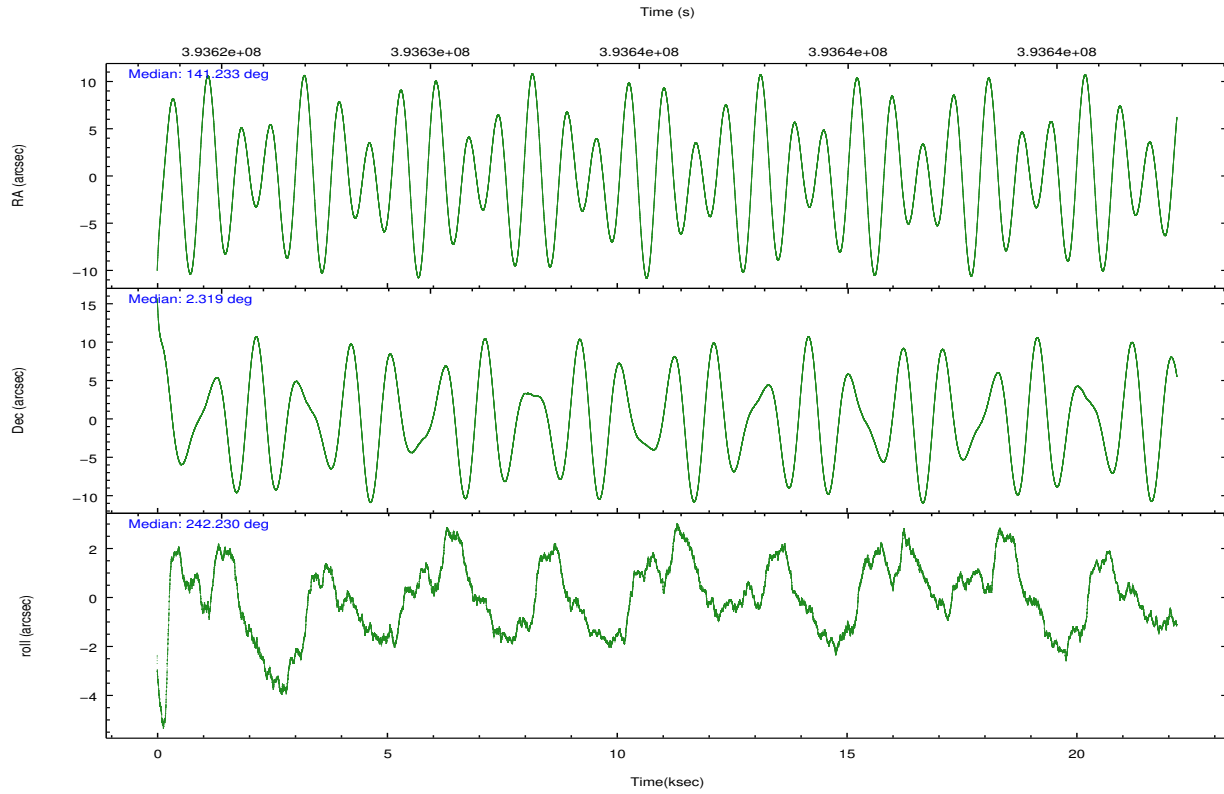
	ccd 2	ccd 3	ccd 6	ccd 7	ccd 8
grade 0 events	3131	3002	3264	17687	9205
	3%	3%	3%	15%	7%
grade 1 events	39	38	36	146	71
	0%	0%	0%	0%	0%
grade 2 events	2208	1929	2253	10244	6982
	2%	2%	2%	8%	5%
grade 3 events	1175	1286	1283	4929	3307
	1%	1%	1%	4%	2%
grade 4 events	1173	1158	1219	4937	3065
	1%	1%	1%	4%	2%
grade 5 events	3109	3873	3823	11349	5654
	3%	4%	4%	9%	4%
grade 6 events	1693	1716	2045	23920	8488
	1%	2%	2%	20%	7%
grade 7 events	78047	71112	77239	44694	83140
	86%	84%	84%	37%	69%

2.2 Compared Parameters

Parameter	Planned	Actual	Parameter	Planned	Actual
Instrument	ACIS	ACIS	Obspar format version number	7	7
Detector	ACIS-23678	ACIS-23678	Obspar file type	PREDICTED	ACTUAL
Grating	NONE	NONE	Obspar update status	NONE	UPDATED
Data mode	VFAINT	VFAINT	CCD I0 on	N	N
Observation mode	POINTING	POINTING	CCD I1 on	N	N
[deg] Pointing RA	141.231803	141.2332398543075	CCD I2 on	O4	Y
[deg] Pointing Dec	2.346046	2.318771806079583	CCD I3 on	O3	Y
[deg] Pointing Roll	242.079990	242.2365511199518	CCD S0 on	N	N
[mm] SIM focus pos	-0.684267	-0.6828225247311905	CCD S1 on	N	N
[mm] SIM defocus	0	0.001444936568705701	CCD S2 on	O1	Y
[mm] SIM translation stage pos	-190.132523	-190.1400660498719	CCD S3 on	Y	Y
[mm] SIM translation stage offset	0	0.00754346686406393	CCD S4 on	O2	Y
[s] Observation start time (MET)	393624752.184000	393623672.60755	CCD S5 on	N	N
Observation start date	2010-06-22T20:11:26	2010-06-22T19:54:32	Number of optional ACIS chips dropped	0	0
[s] Observation end time (MET)	393646753.184000	393646979.57124	On-chip summing requested	N	N
Observation end date	2010-06-23T02:18:07	2010-06-23T02:22:59	Subarray requested	CUSTOM	1/2
Read mode	TIMED	TIMED	Subarray start row	257	257
			Subarray row count	512	512
			Alternating exposures requested	N	N
			[s] Primary exposure time	0.000000	1.7

2.3 Aspect



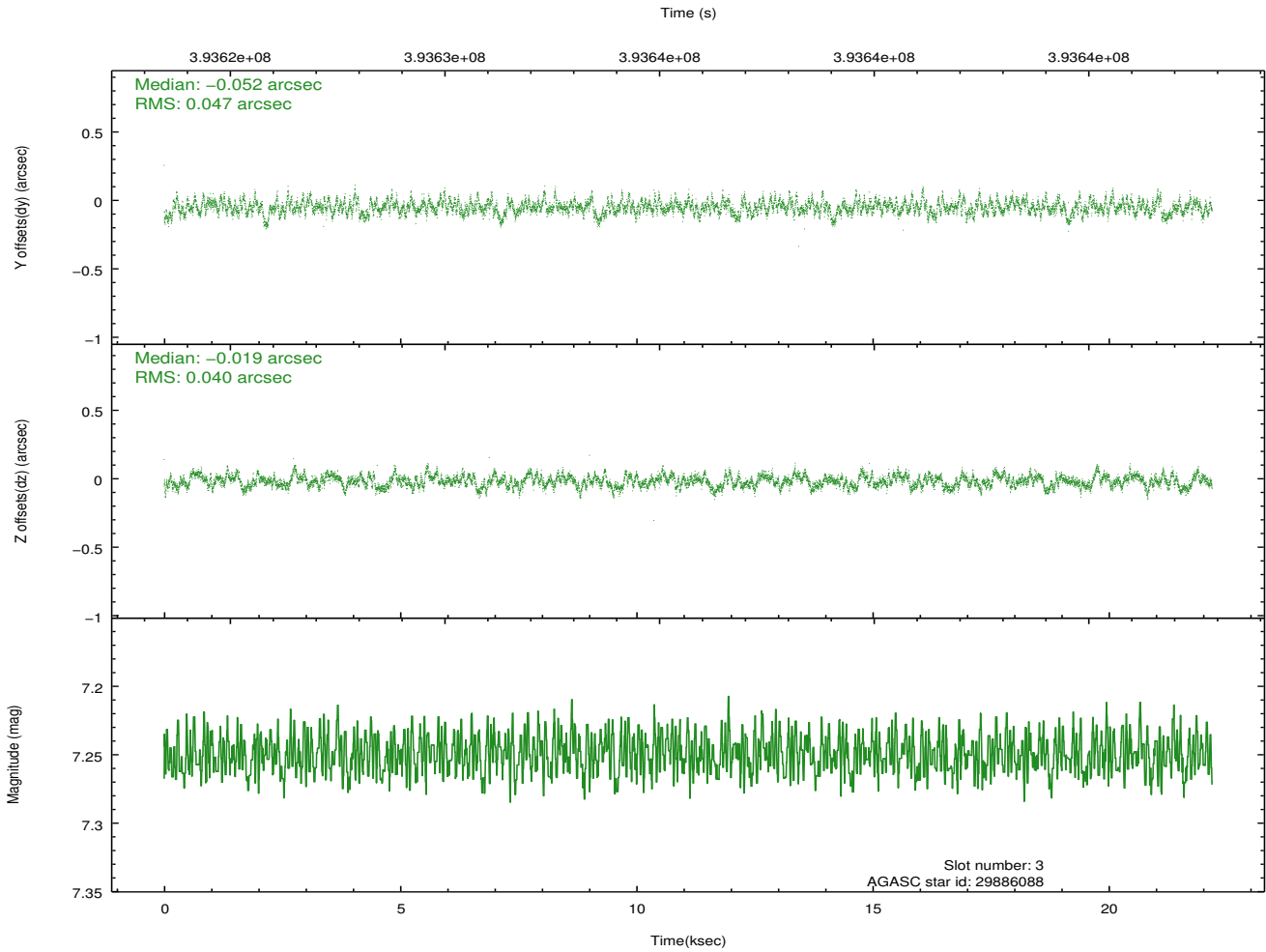
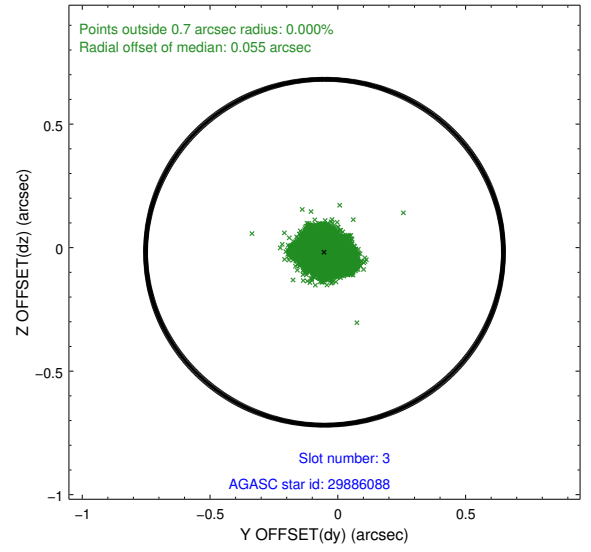
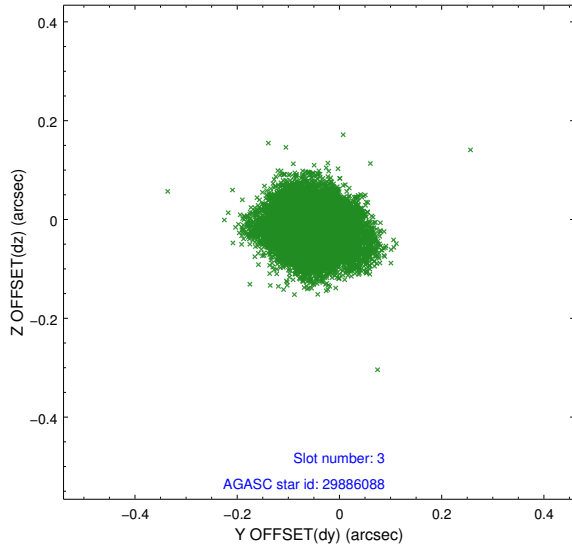


Slot Statistics

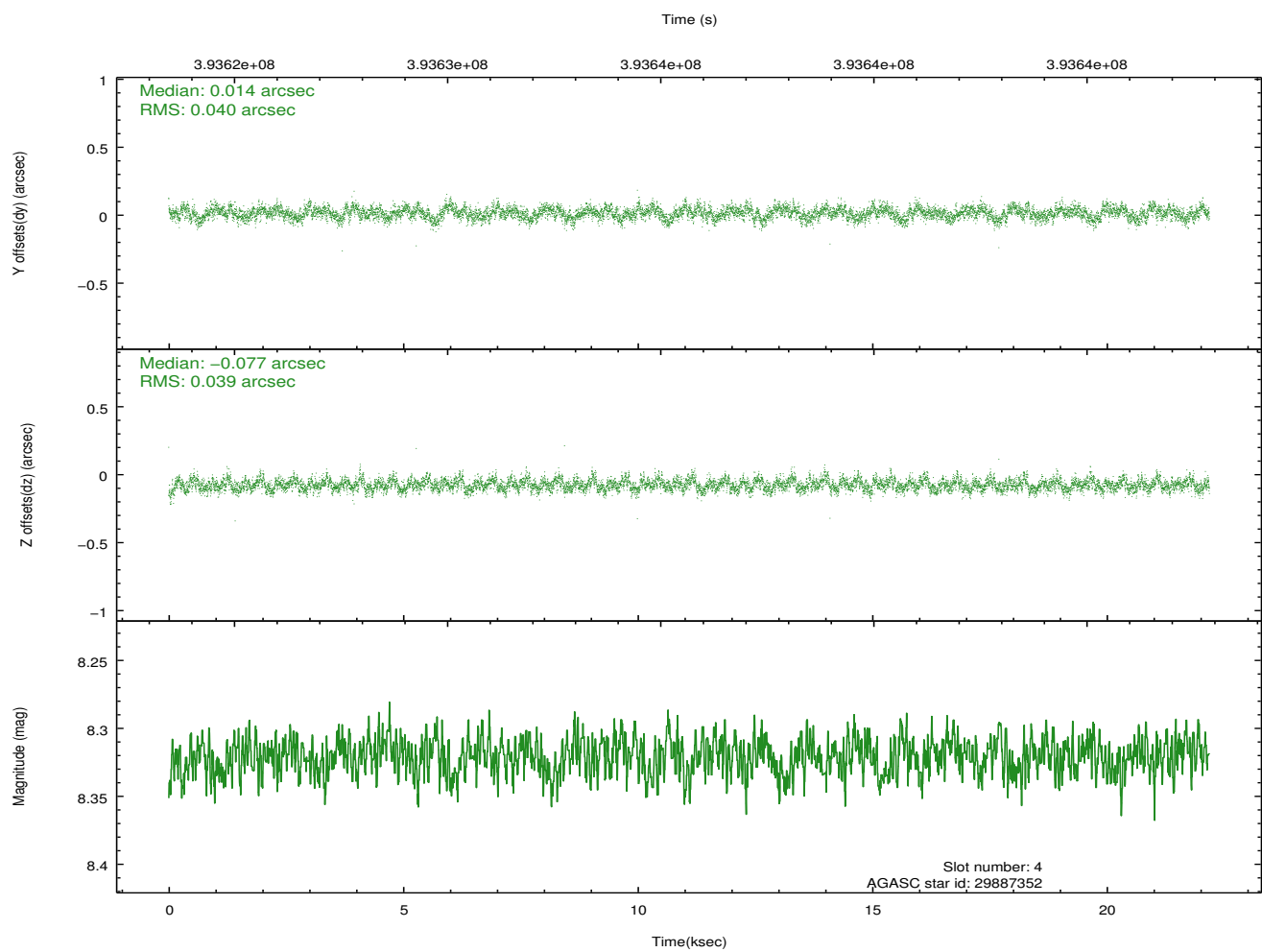
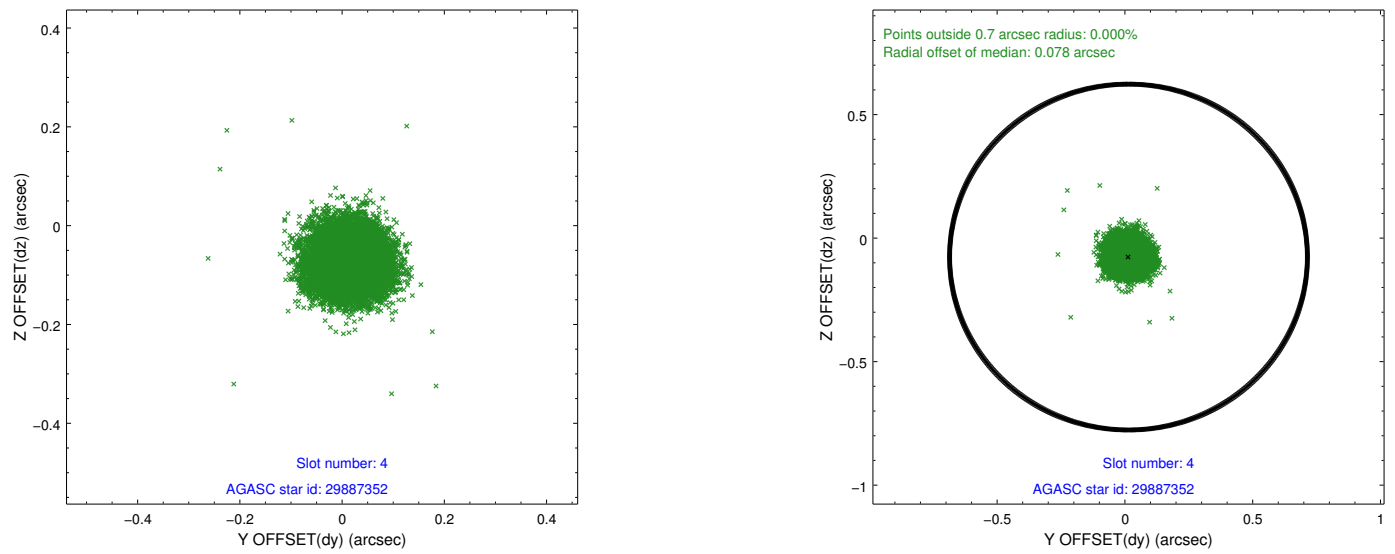
slot	status	id	mag	n_pts	med_dy	med_dz	dr1	dr2	ra	dec	mean_y	mean_z
0	FID	ACIS-S-1	6.96	5412	-0.013	0.025	0.006	0.010	0.000000	0.000000	927.30	-1735.72
1	FID	ACIS-S-4	6.96	5412	0.062	-0.016	0.006	0.010	0.000000	0.000000	2144.87	168.24
2	FID	ACIS-S-6	7.11	5412	-0.072	0.002	0.006	0.011	0.000000	0.000000	393.38	805.79
3	GUIDE	29886088	7.25	10816	-0.052	-0.019	0.066	0.106	140.911389	2.409953	336.66	-1125.64
4	GUIDE	29887352	8.32	10820	0.014	-0.077	0.059	0.094	141.532384	1.680922	1609.52	2077.23
5	GUIDE	30288600	9.07	10816	-0.016	0.067	0.074	0.125	141.552019	2.678221	-1595.38	458.37
6	GUIDE	30290968	9.47	10733	0.161	-0.047	0.117	0.185	140.928070	2.739309	-739.15	-1627.78
7	GUIDE	30292744	8.53	10818	-0.107	0.072	0.065	0.104	141.614493	2.506173	-1153.56	945.92

2.4 Star Slots

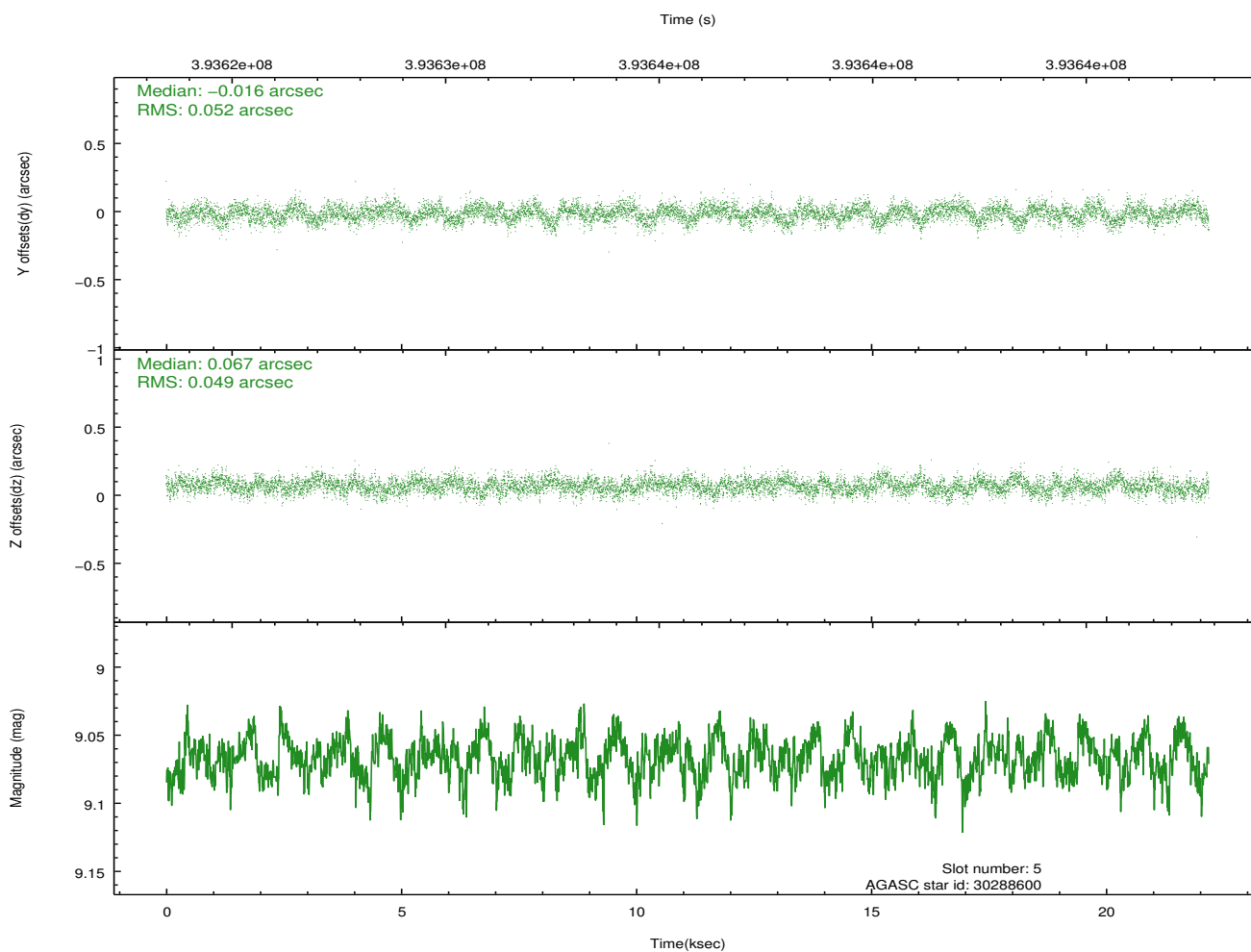
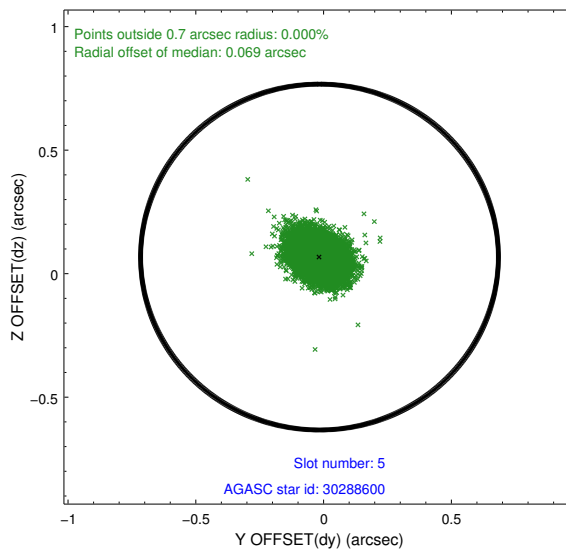
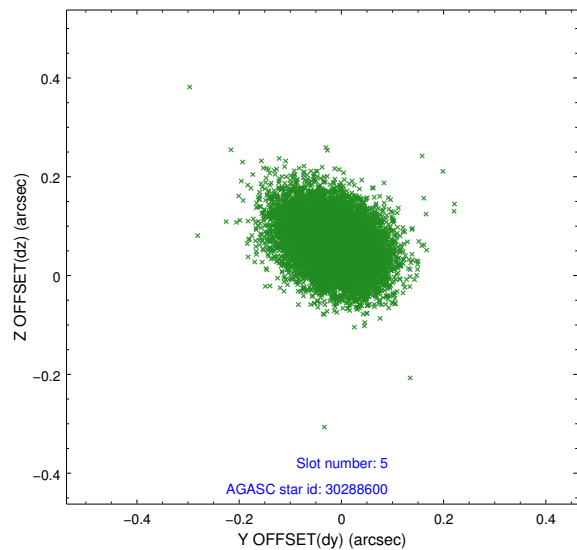
2.4.1 Slot 3



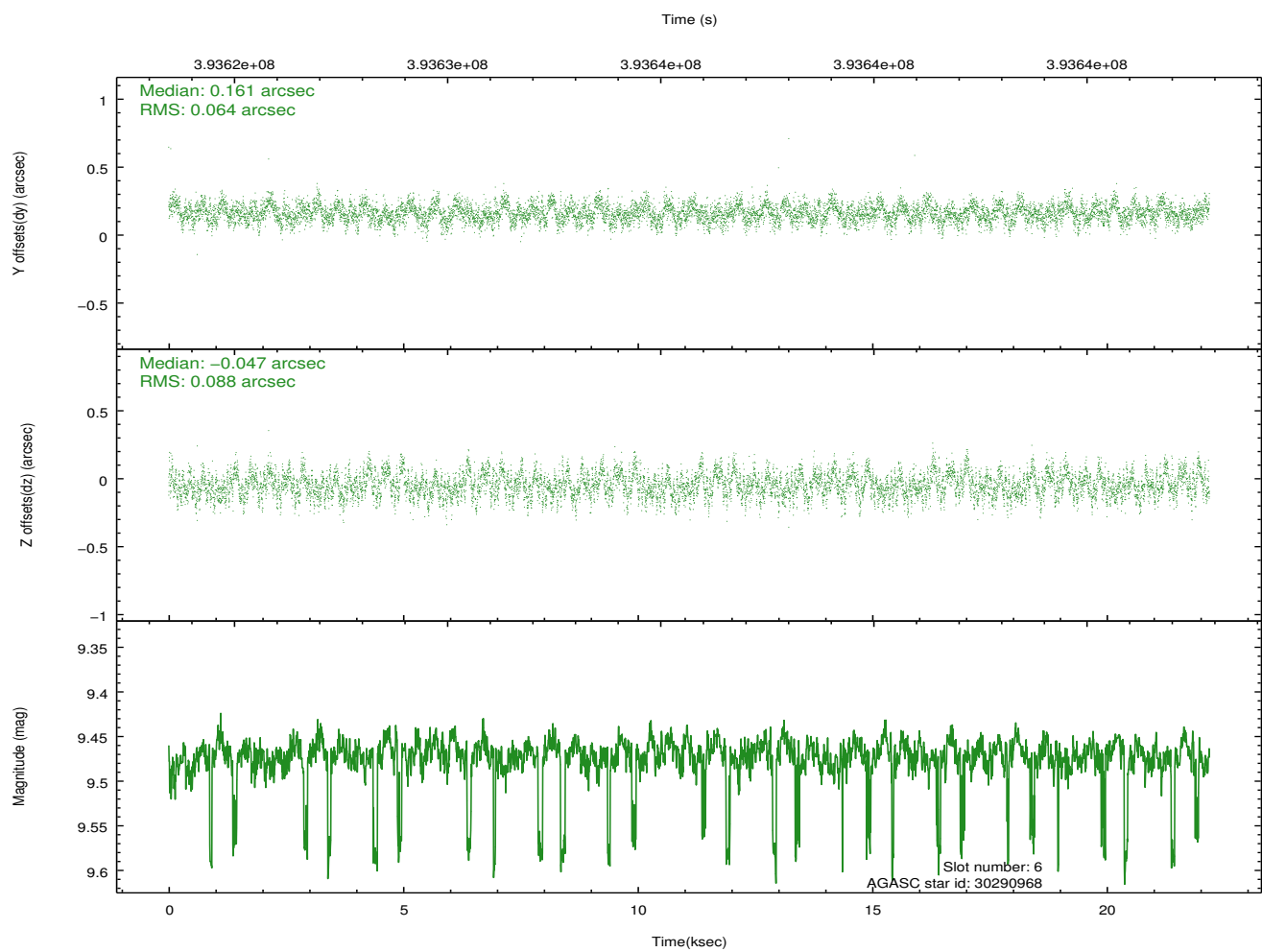
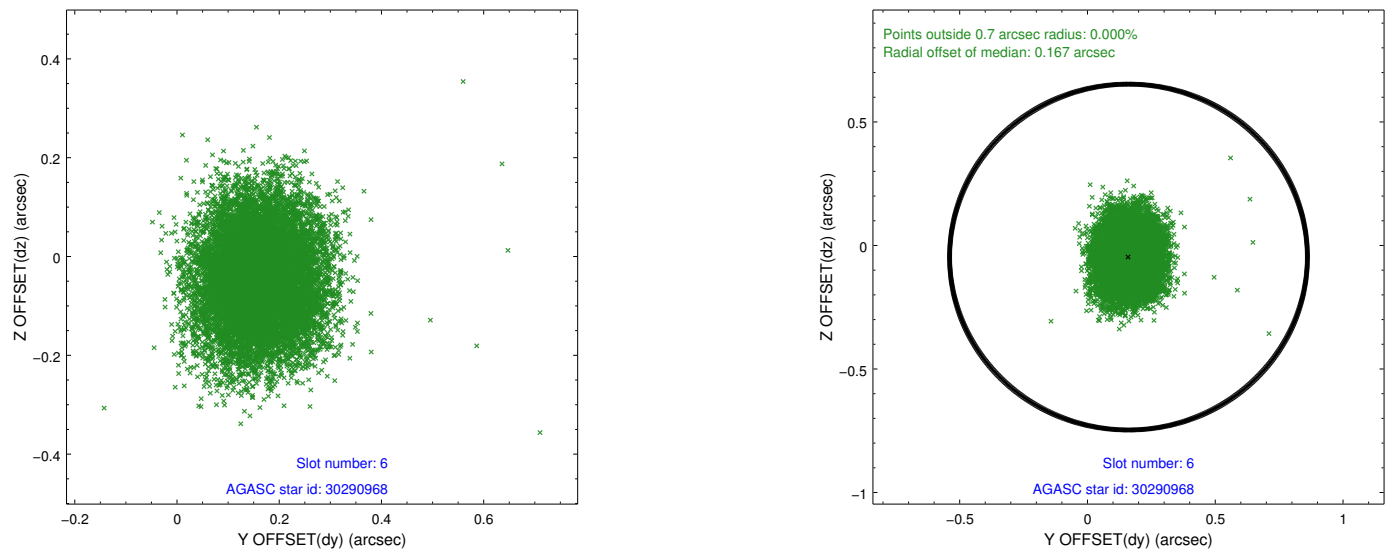
2.4.2 Slot 4



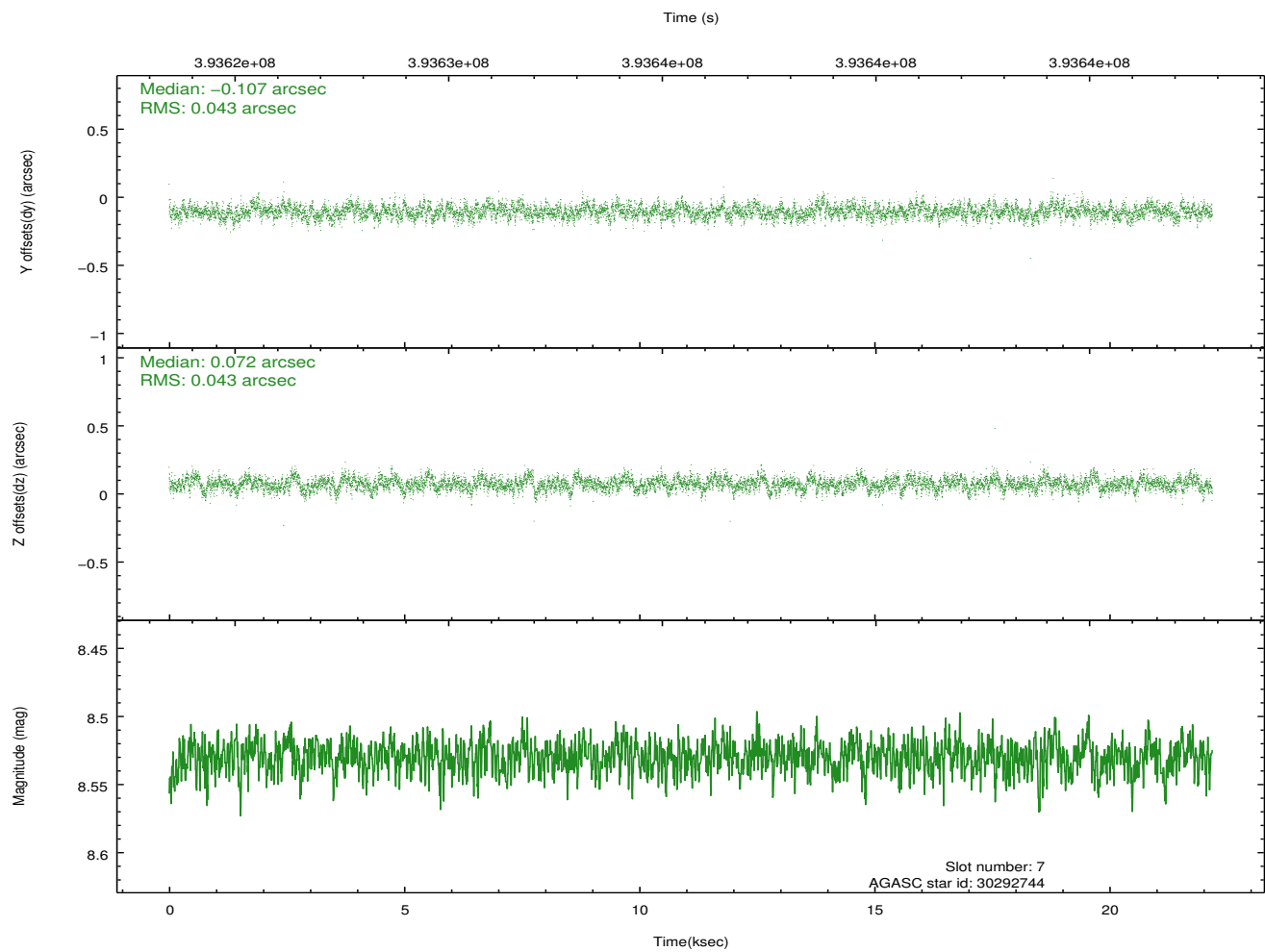
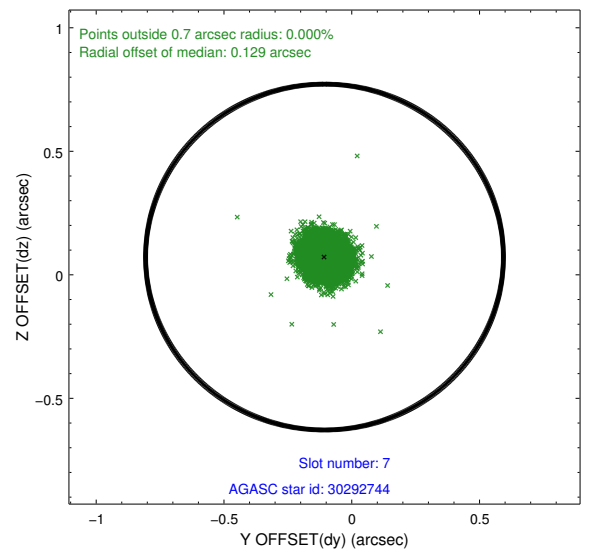
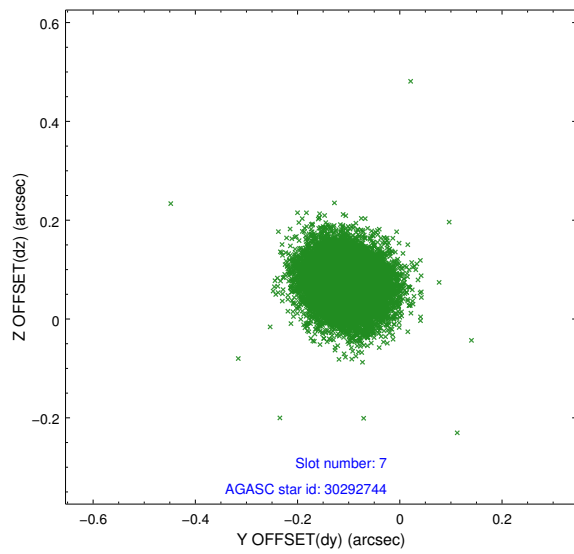
2.4.3 Slot 5



2.4.4 Slot 6

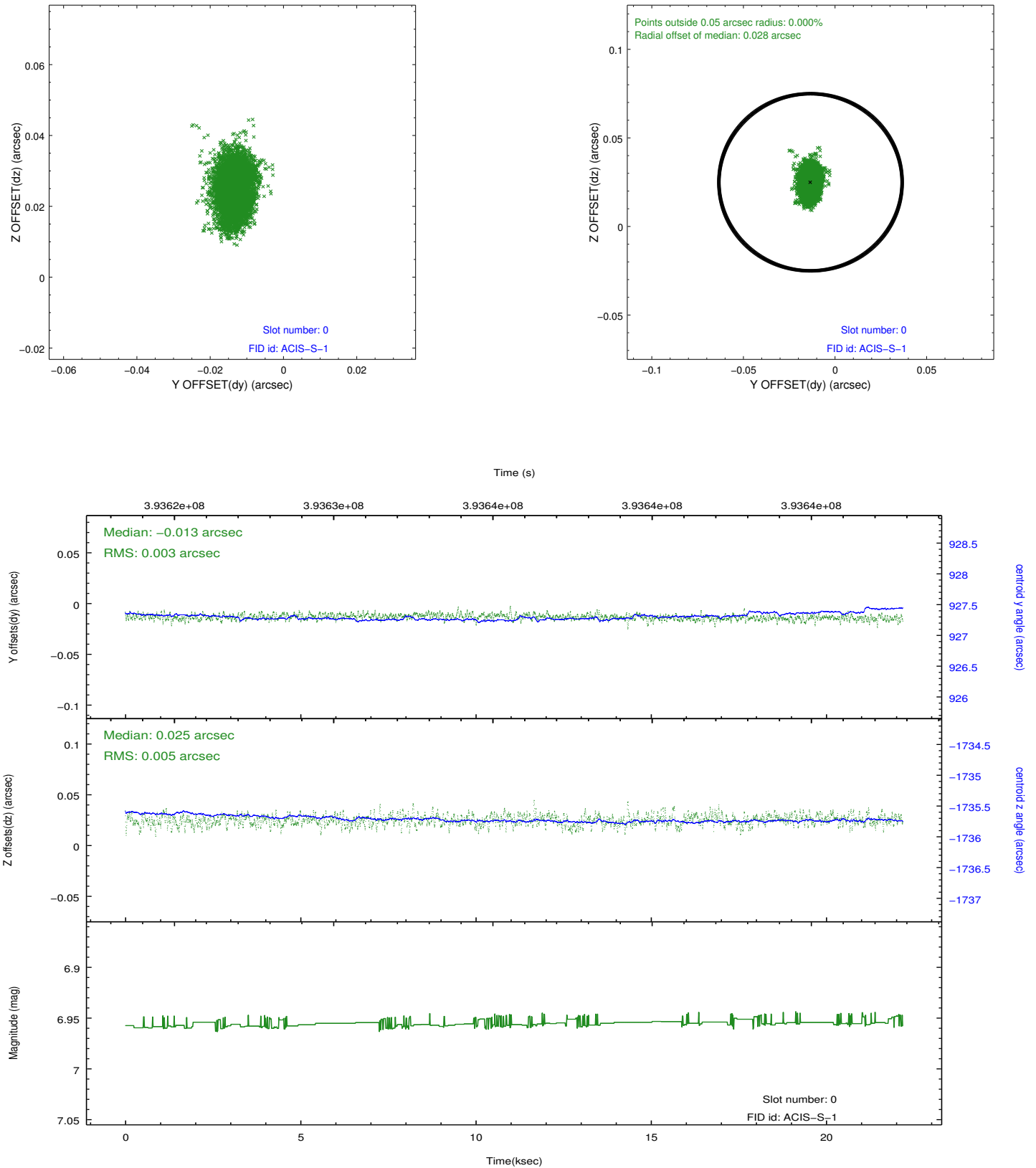


2.4.5 Slot 7

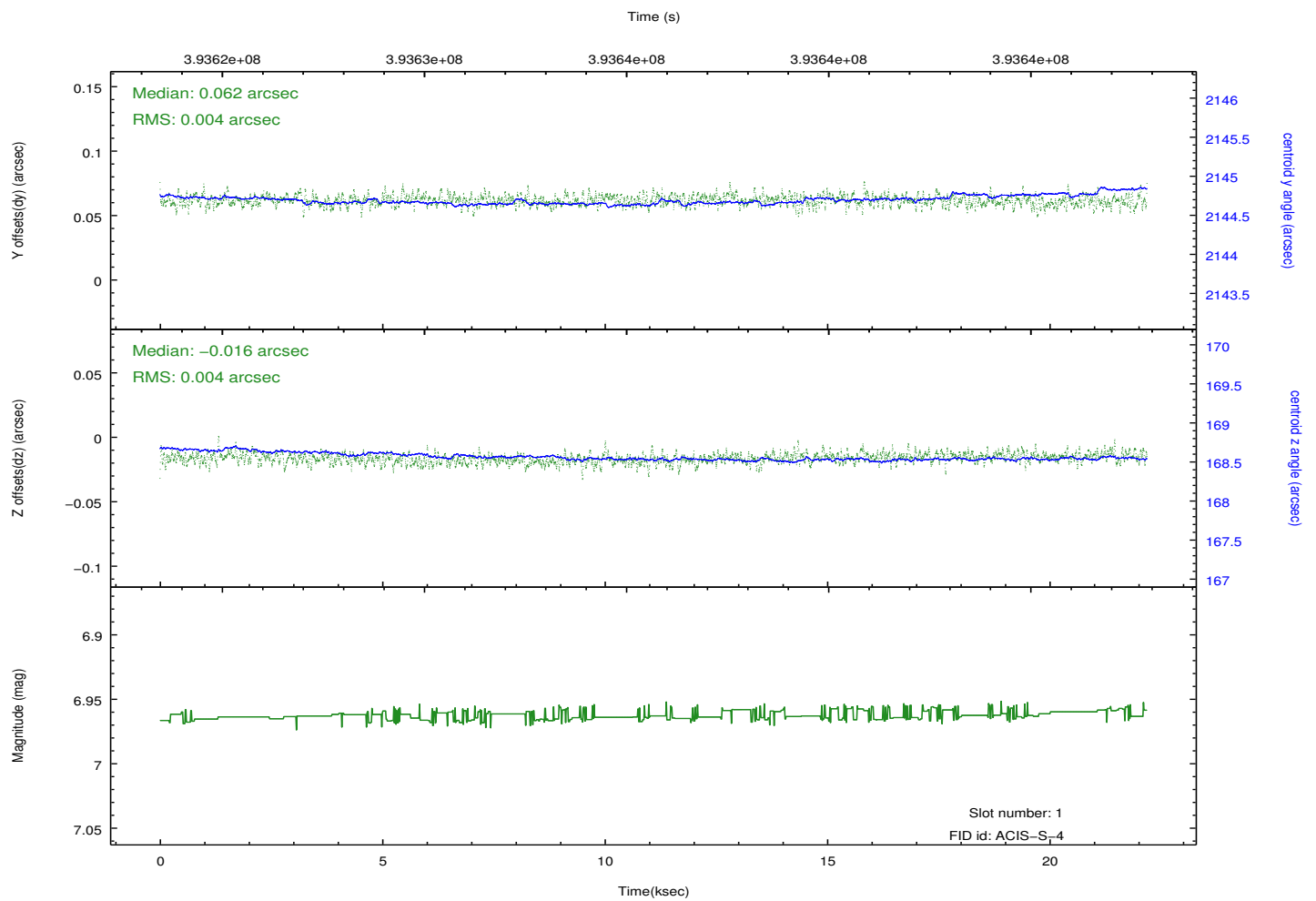
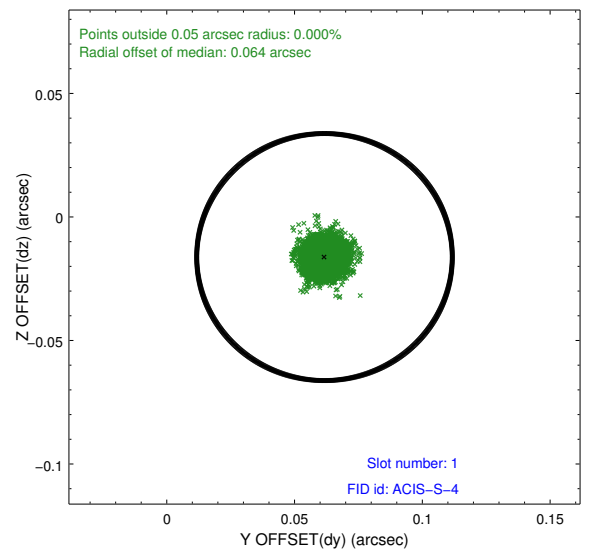
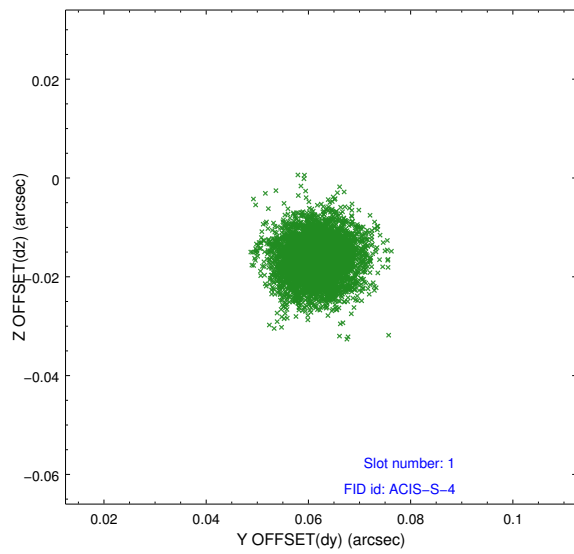


2.5 FID Slots

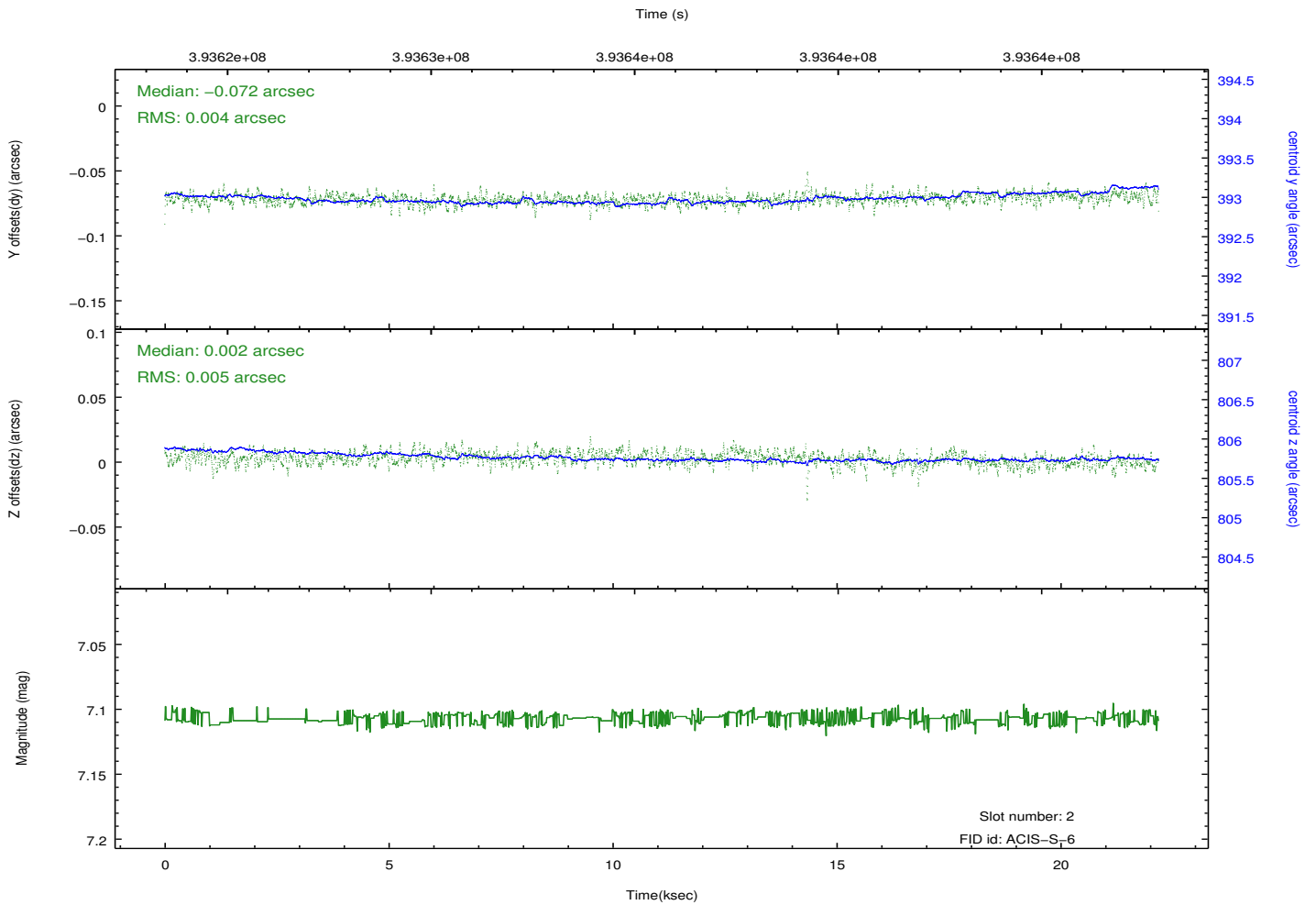
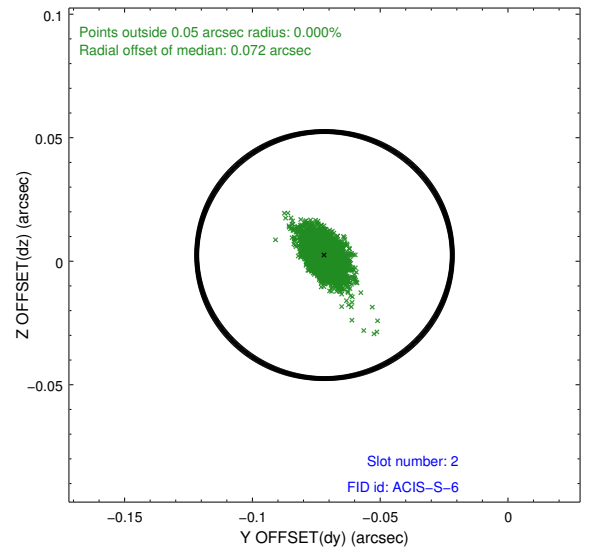
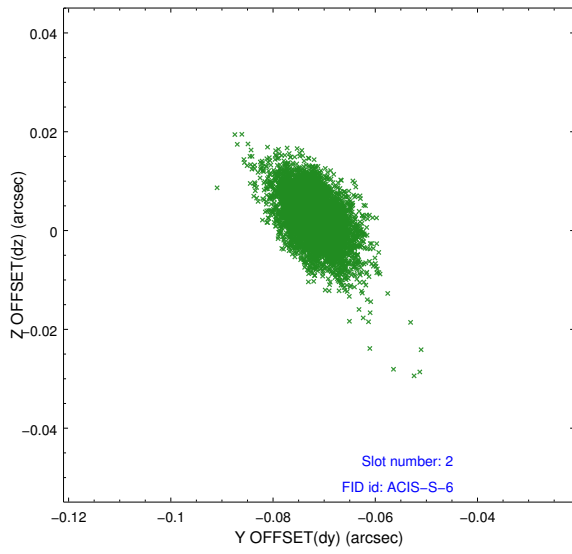
2.5.1 Slot 0



2.5.2 Slot 1



2.5.3 Slot 2



A Summary

A.1 Status

V&V Scientist	Jen Lauer
V&V Date (YYYY-MM-DD)	2012.07.06
V&V Edition	1
V&V Disposition and Status	OK
V&V Charge Time	22.065999845326

A.2 Comments