

# V&V Reference Report

## L2 ASCDS Version : 8.4.5

Observation 11725 - L2 Version 2  
Chandra X-Ray Center

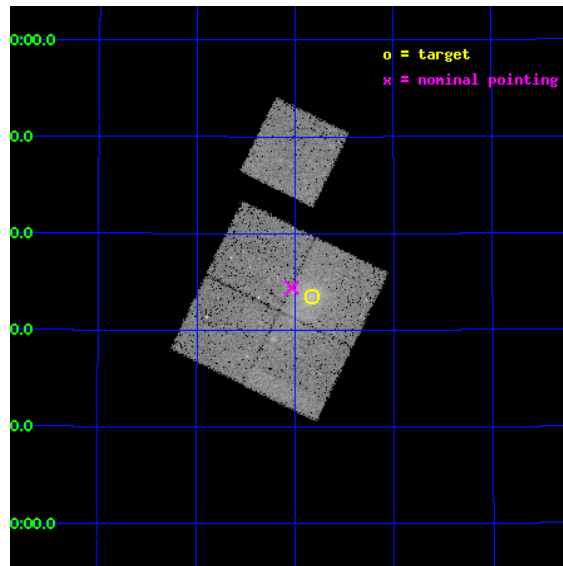
L2 Processing Date : Jun 16 2012

## Contents

<b>1</b>	<b>Front</b>	<b>2</b>
<b>2</b>	<b>OBI</b>	<b>3</b>
2.1	OBI . . . . .	3
2.1.1	Images . . . . .	3
2.1.2	Bias . . . . .	3
2.1.3	Parameters . . . . .	4
2.1.4	Events . . . . .	4
2.2	Compared Parameters . . . . .	5
2.3	Aspect . . . . .	6
2.4	Star Slots . . . . .	9
2.4.1	Slot 3 . . . . .	9
2.4.2	Slot 4 . . . . .	10
2.4.3	Slot 5 . . . . .	11
2.4.4	Slot 6 . . . . .	12
2.4.5	Slot 7 . . . . .	13
2.5	FID Slots . . . . .	14
2.5.1	Slot 0 . . . . .	14
2.5.2	Slot 1 . . . . .	15
2.5.3	Slot 2 . . . . .	16
<b>A</b>	<b>Summary</b>	<b>17</b>
A.1	Status . . . . .	17
A.2	Comments . . . . .	17

# 1 Front

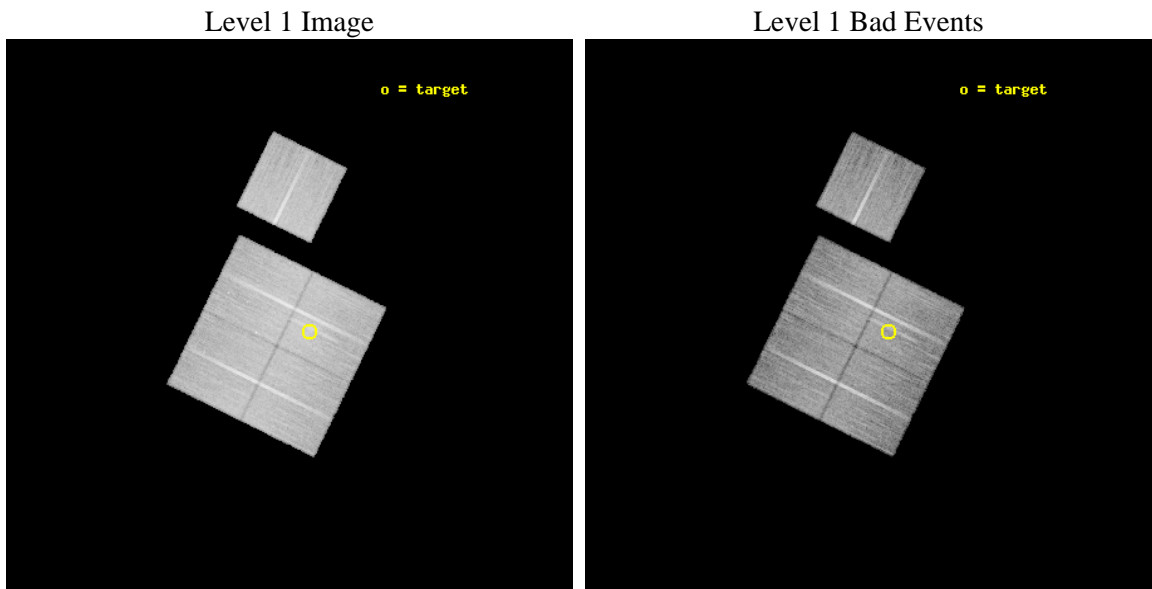
seq_num	800865	Sequence number
obs_id	11725	Observation id
title	Cosmology with a complete sample of 0.15	Proposal title
observer	Prof. Massimiliano Bonamente	Principal investigator
object	Abell 1682	Source name
dtcycle	0	&#160
cycle	P	events from which exps? Prim/Second/Both
ra_targ	196.708333	Observer's specified target RA [deg]
dec_targ	46.558333	Observer's specified target Dec [deg]
ra_nom	196.75872890075	Nominal RA [deg]
dec_nom	46.573296002927	Nominal Dec [deg]
roll_nom	26.228880641367	Nominal Roll [deg]
revision	2	Processing version of data
ontime	20134.459164619	Sum of GTIs [s]
livetime	19871.38763286	Livetime [s]
ontime0	20134.459184587	Sum of GTIs [s]
ontime1	20134.459164619	Sum of GTIs [s]
ontime2	20134.459194541	Sum of GTIs [s]
ontime3	20134.459164619	Sum of GTIs [s]
ontime6	20134.459184527	Sum of GTIs [s]
l2events	86040	Number of level 2 events



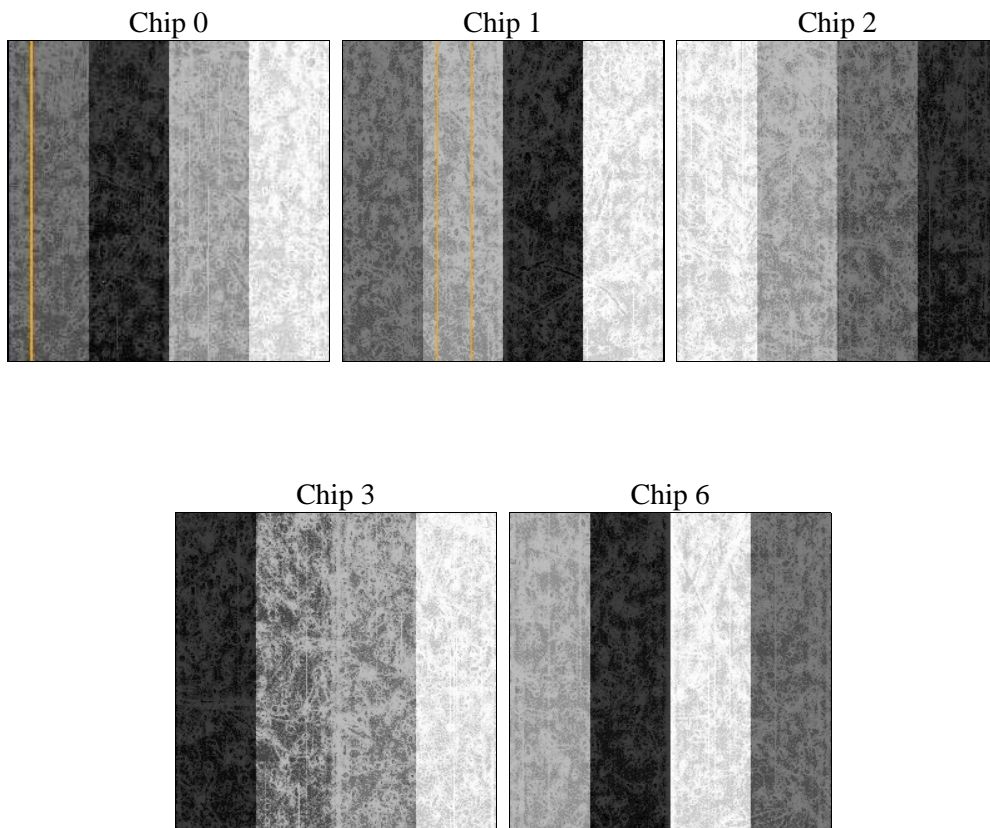
## 2 OBI

### 2.1 OBI

#### 2.1.1 Images



#### 2.1.2 Bias



### 2.1.3 Parameters

obi_num	0	Obi number	sched_exp_time	20000.000000	[s] Scheduled observation exposure time
ascdsver	8.4.5	Processing system revision	ontime	20134.459164619	Sum of GTIs [s]
caldbver	4.4.10	&#160	ontime0	20134.459184587	Sum of GTIs [s]
date	2012-06-16T03:12:38	Date and time of file creation	ontime1	20134.459164619	Sum of GTIs [s]
revision	2	Processing version of data	ontime2	20134.459194541	Sum of GTIs [s]
			ontime3	20134.459164619	Sum of GTIs [s]
			ontime6	20134.459184527	Sum of GTIs [s]
			l1events	881456	Number of level 1 events

### 2.1.4 Events

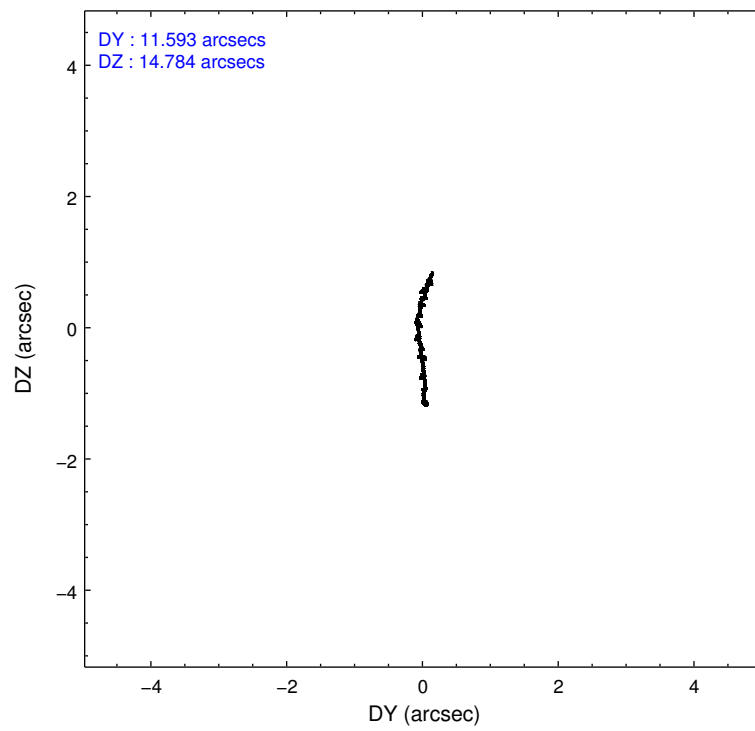
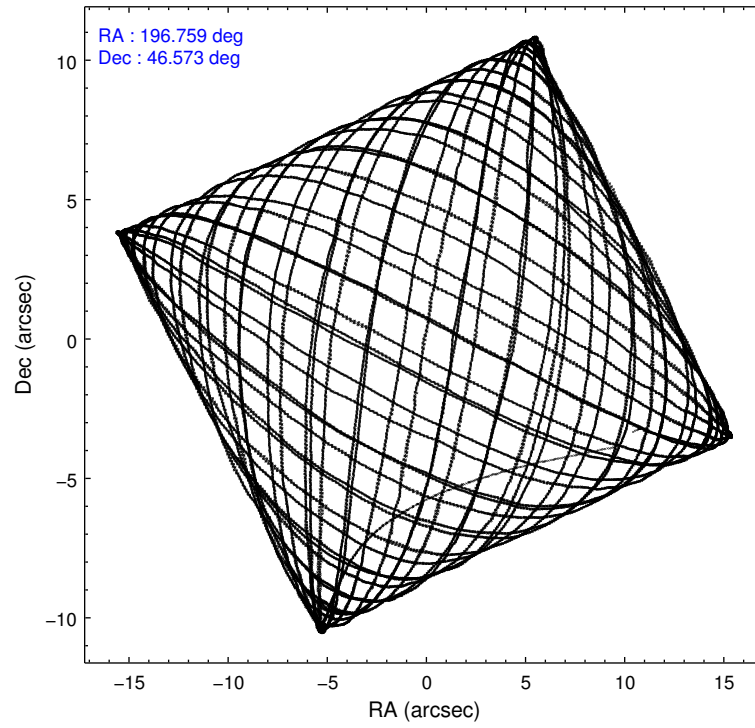
	ccd 0	ccd 1	ccd 2	ccd 3	ccd 6
level 1 events	165798	167354	185946	184843	177515
rejected events	147298	145868	167144	160058	159354
rejected %	88%	87%	89%	86%	89%

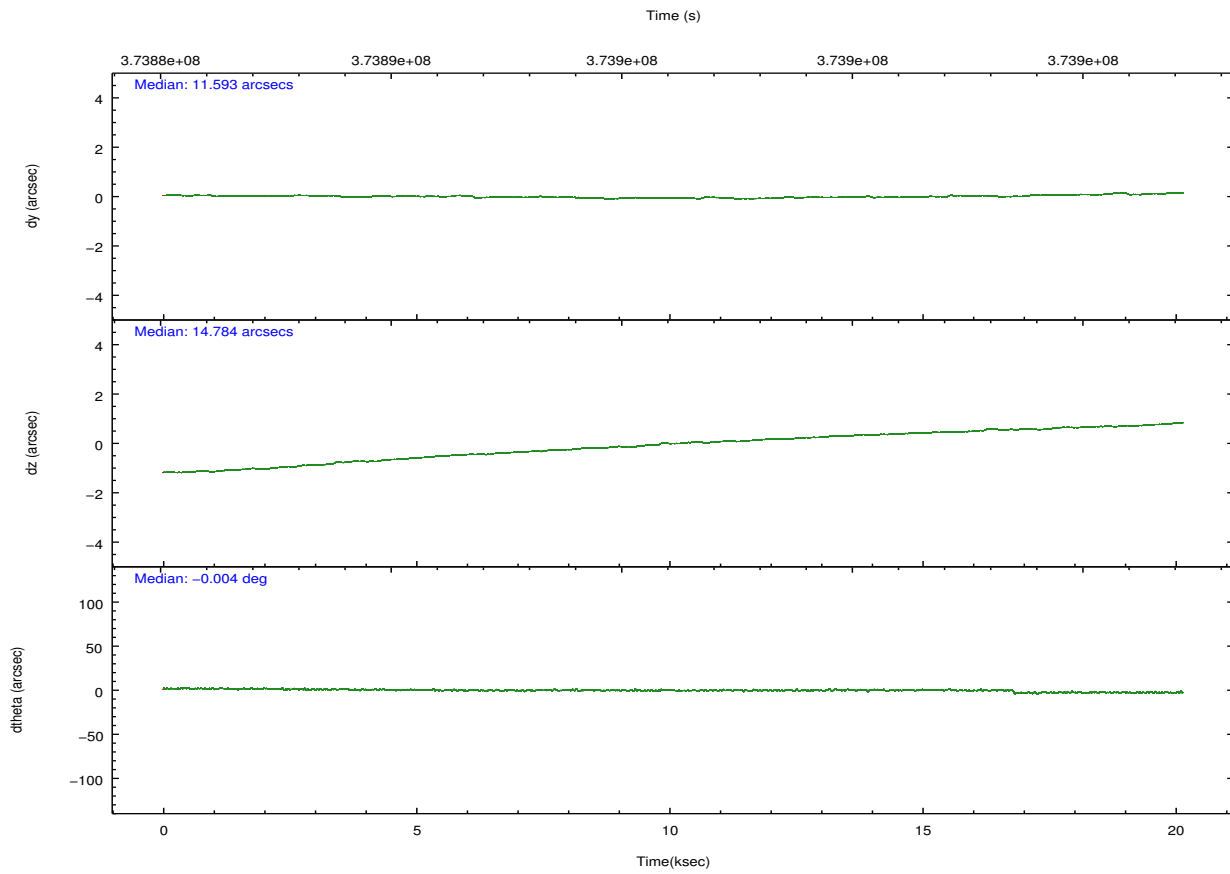
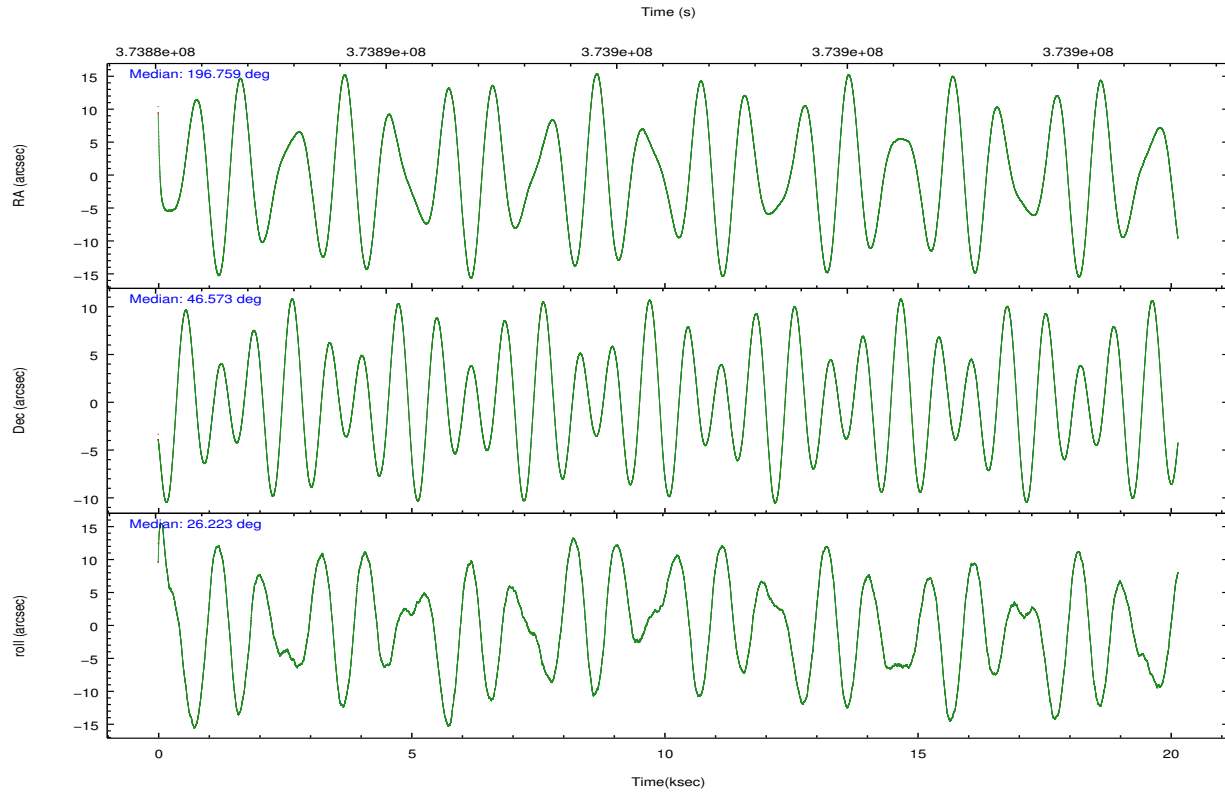
	ccd 0	ccd 1	ccd 2	ccd 3	ccd 6
grade 0 events	6854	8633	7379	12617	6573
	4%	5%	3%	6%	3%
grade 1 events	110	112	117	146	80
	0%	0%	0%	0%	0%
grade 2 events	4552	4953	4557	4580	3979
	2%	2%	2%	2%	2%
grade 3 events	2036	2115	1905	2140	2021
	1%	1%	1%	1%	1%
grade 4 events	1924	2128	1980	2140	1925
	1%	1%	1%	1%	1%
grade 5 events	6538	7158	6298	7715	7320
	3%	4%	3%	4%	4%
grade 6 events	3534	4145	3395	3746	4007
	2%	2%	1%	2%	2%
grade 7 events	140250	138110	160315	151759	151610
	84%	82%	86%	82%	85%

## 2.2 Compared Parameters

Parameter	Planned	Actual	Parameter	Planned	Actual
Instrument	ACIS	ACIS	Obspar format version number	7	7
Detector	ACIS-01236	ACIS-01236	Obspar file type	PREDICTED	ACTUAL
Grating	NONE	NONE	Obspar update status	NONE	UPDATED
Data mode	VFAINT	VFAINT	Number of optional ACIS chips dropped	0	0
Observation mode	POINTING	POINTING	On-chip summing requested	N	N
[deg] Pointing RA	196.736623	196.7587289007519	Subarray requested	NONE	NONE
[deg] Pointing Dec	46.550406	46.57329600292709	Alternating exposures requested	N	N
[deg] Pointing Roll	26.036247	26.22888064136663	[s] Primary exposure time	0.000000	3.1
[mm] SIM focus pos	-0.782348	-0.7809083437167272			
[mm] SIM defocus	0	0.001439871863259334			
[mm] SIM translation stage pos	-227.592463	-227.5958210972112			
[mm] SIM translation stage offset	-6	-5.996631905718488			
[s] Observation start time (MET)	373886181.184000	373885004.70664			
Observation start date	2009-11-06T09:15:15	2009-11-06T08:56:44			
[s] Observation end time (MET)	373906181.184000	373906586.59523			
Observation end date	2009-11-06T14:48:35	2009-11-06T14:56:26			
Read mode	TIMED	TIMED			

## 2.3 Aspect



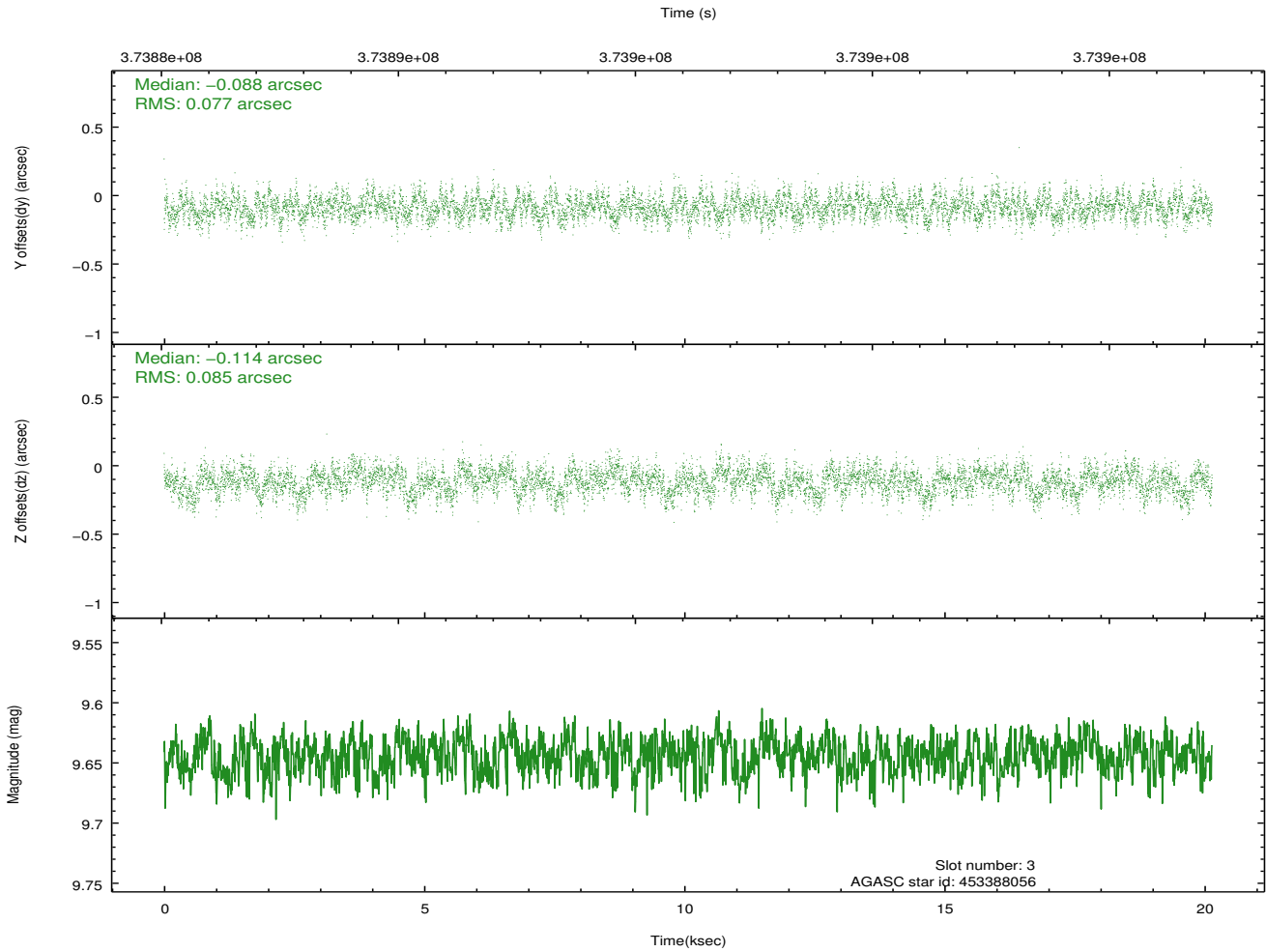
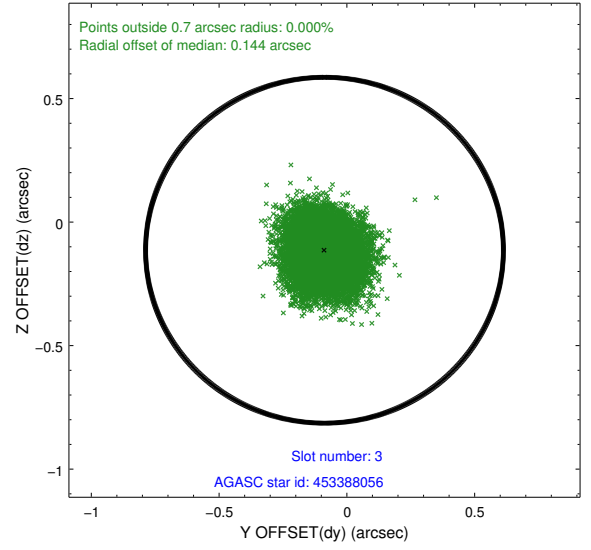
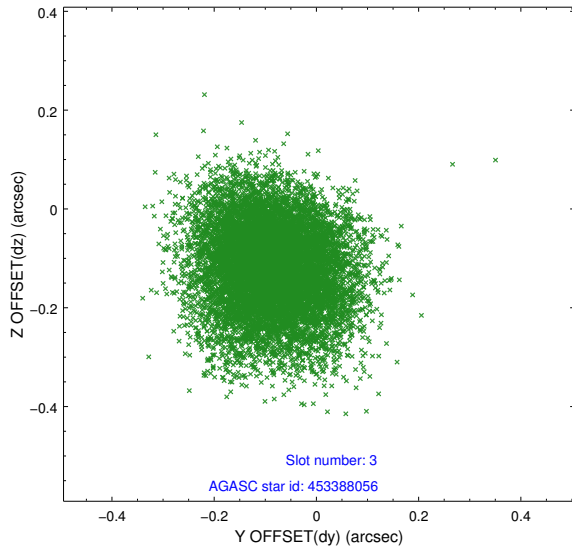


### Slot Statistics

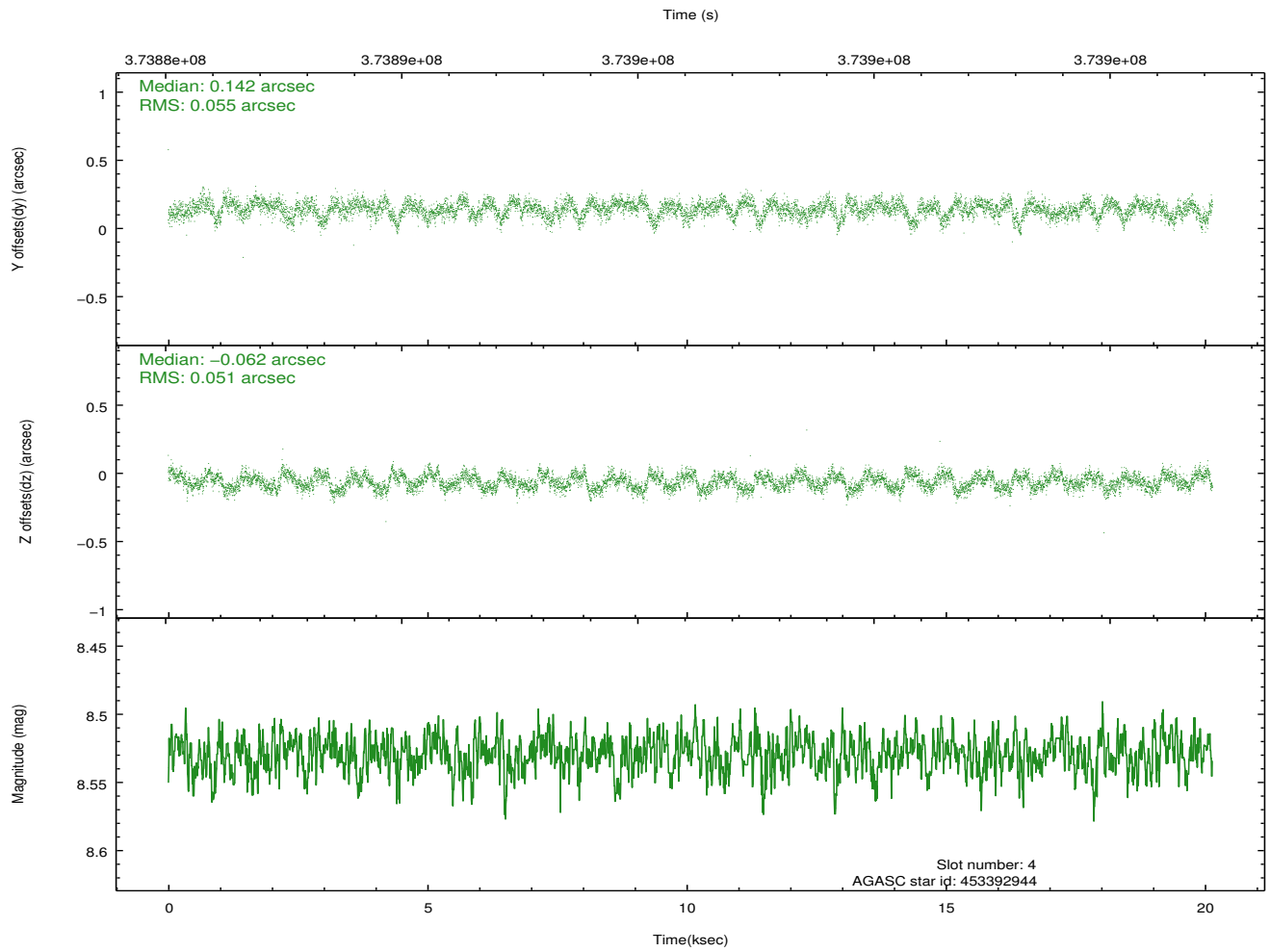
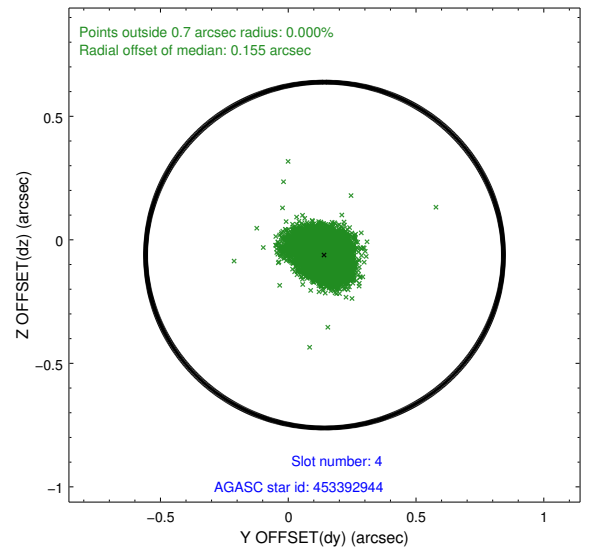
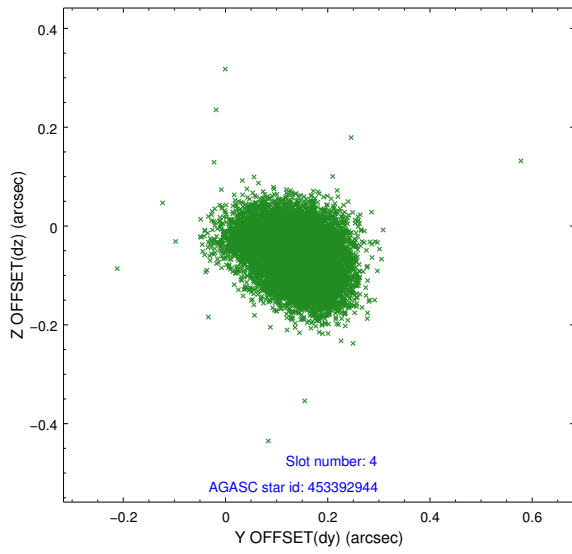
slot	status	id	mag	n_pts	med_dy	med_dz	dr1	dr2	ra	dec	mean_y	mean_z
0	FID	ACIS-I-1	7.03	4914	0.072	-0.086	0.027	0.041	0.000000	0.000000	927.95	-961.42
1	FID	ACIS-I-4	6.94	4914	0.061	0.052	0.019	0.026	0.000000	0.000000	2147.68	939.20
2	FID	ACIS-I-5	7.02	4913	-0.231	0.105	0.017	0.030	0.000000	0.000000	-1820.17	936.44
3	GUIDE	453388056	9.64	9817	-0.088	-0.114	0.123	0.197	196.630652	47.161715	733.10	2091.58
4	GUIDE	453392944	8.53	9823	0.142	-0.062	0.080	0.128	196.043621	46.459257	-1684.82	467.34
5	GUIDE	453395040	9.64	9803	0.212	0.173	0.126	0.197	196.255895	46.165420	-1683.40	-715.74
6	GUIDE	453525928	8.84	9817	-0.244	-0.086	0.069	0.112	197.234950	46.853493	1582.90	445.60
7	GUIDE	453527416	9.72	9814	-0.010	0.098	0.163	0.248	197.089270	46.385166	527.20	-916.62

## 2.4 Star Slots

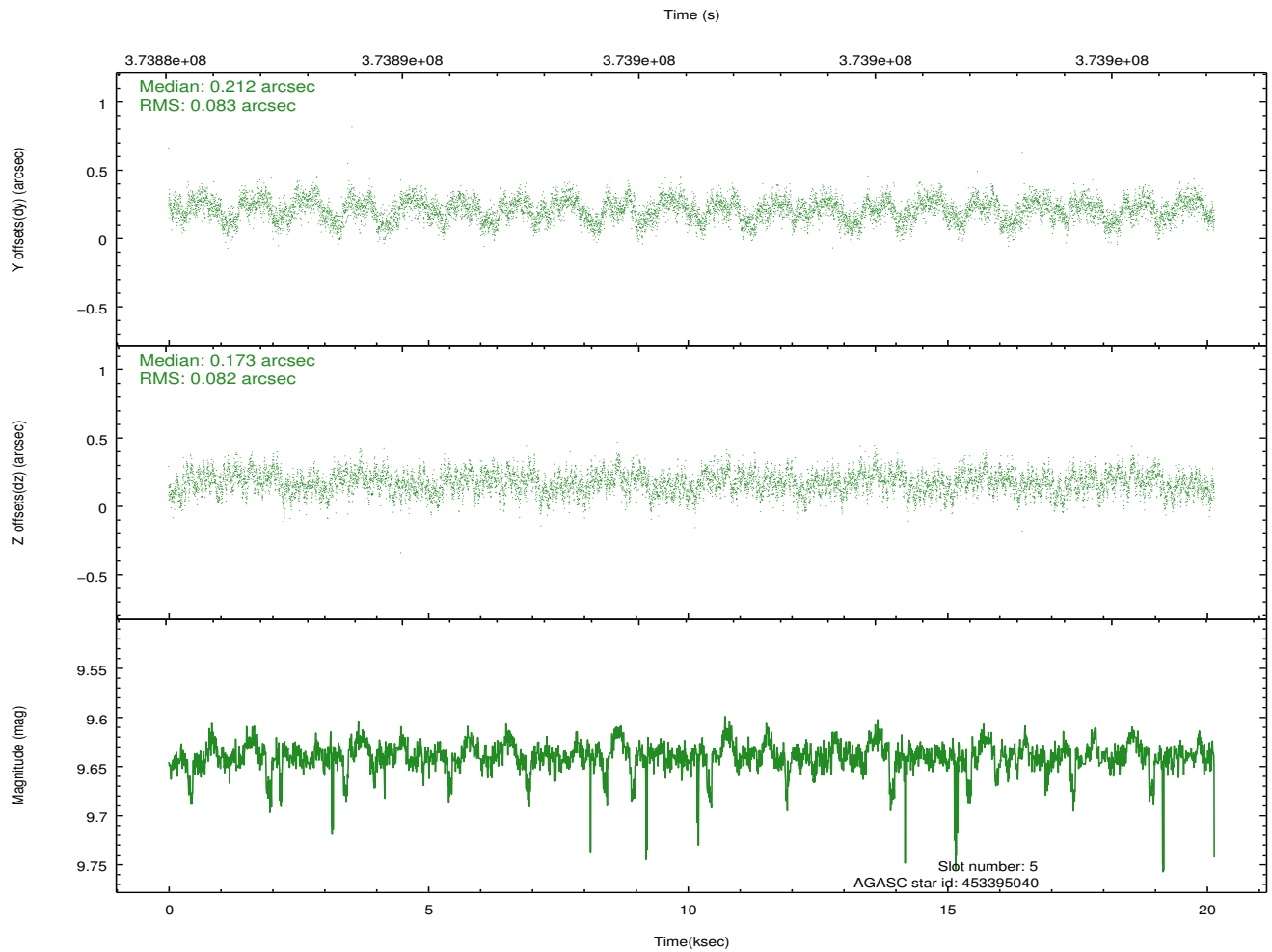
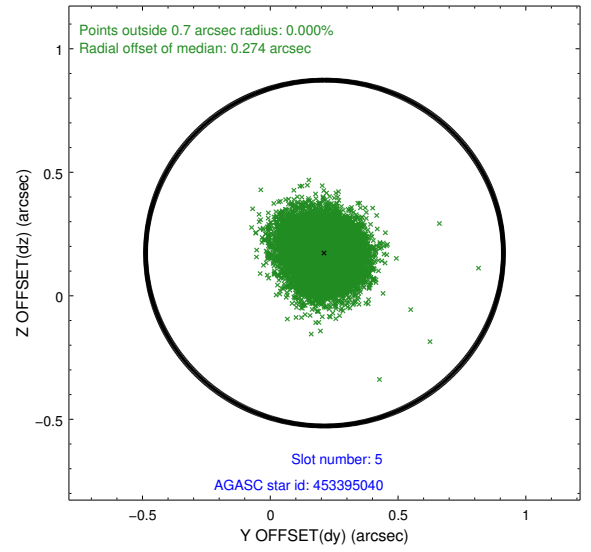
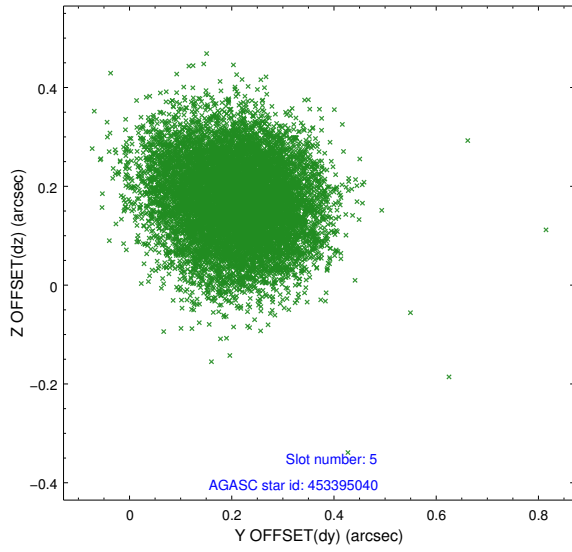
### 2.4.1 Slot 3



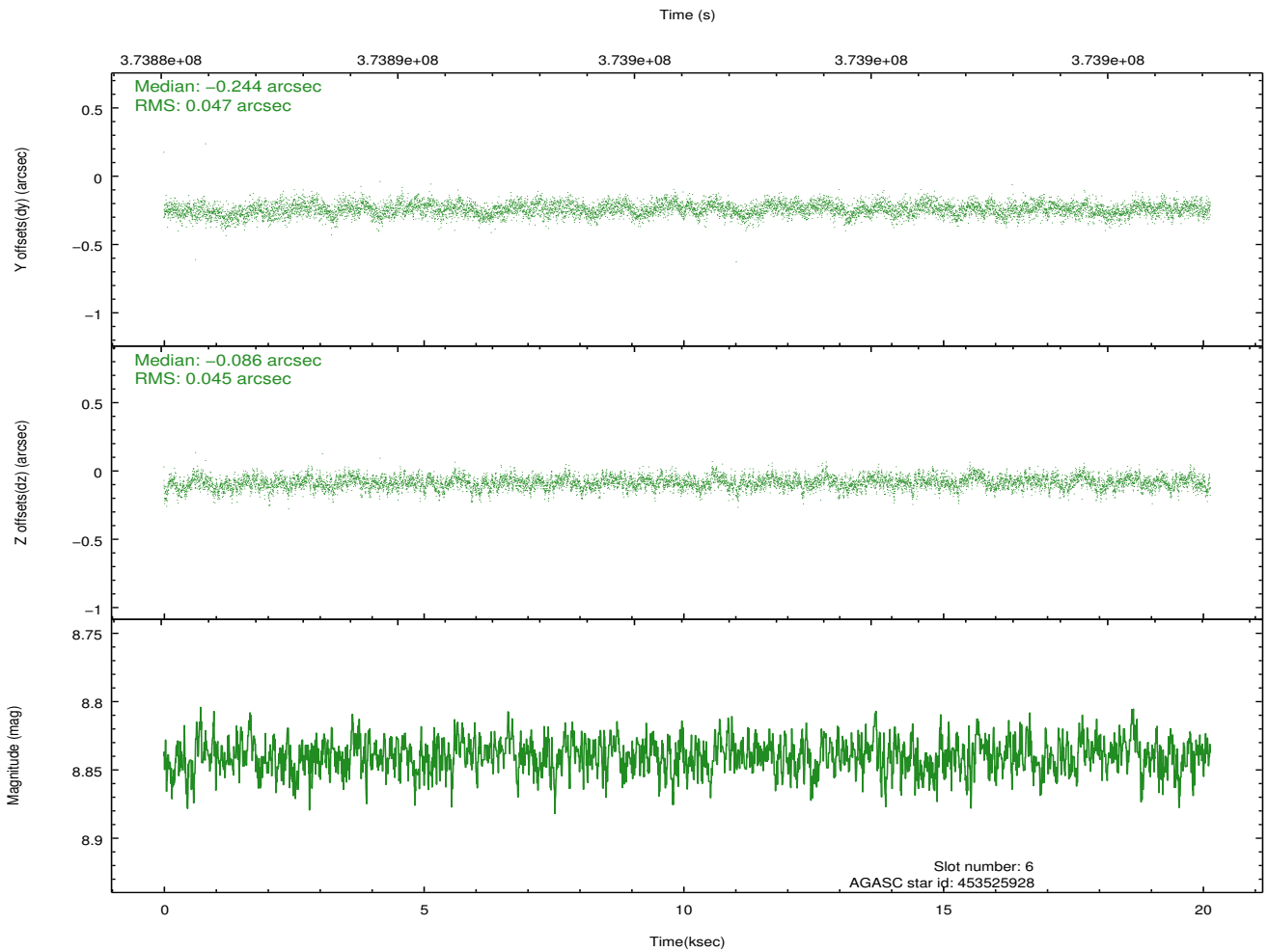
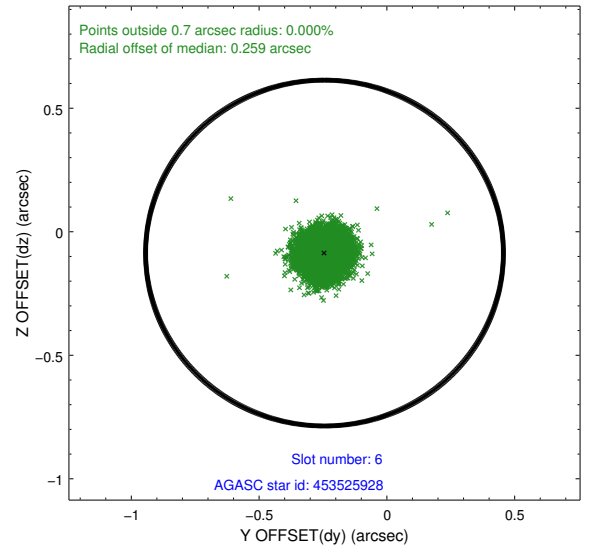
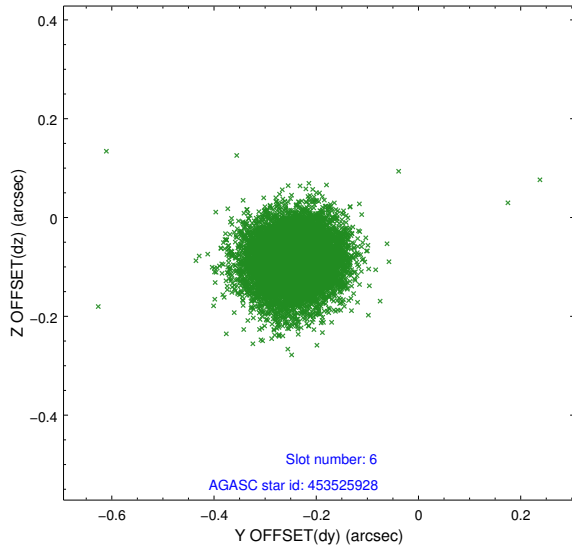
## 2.4.2 Slot 4



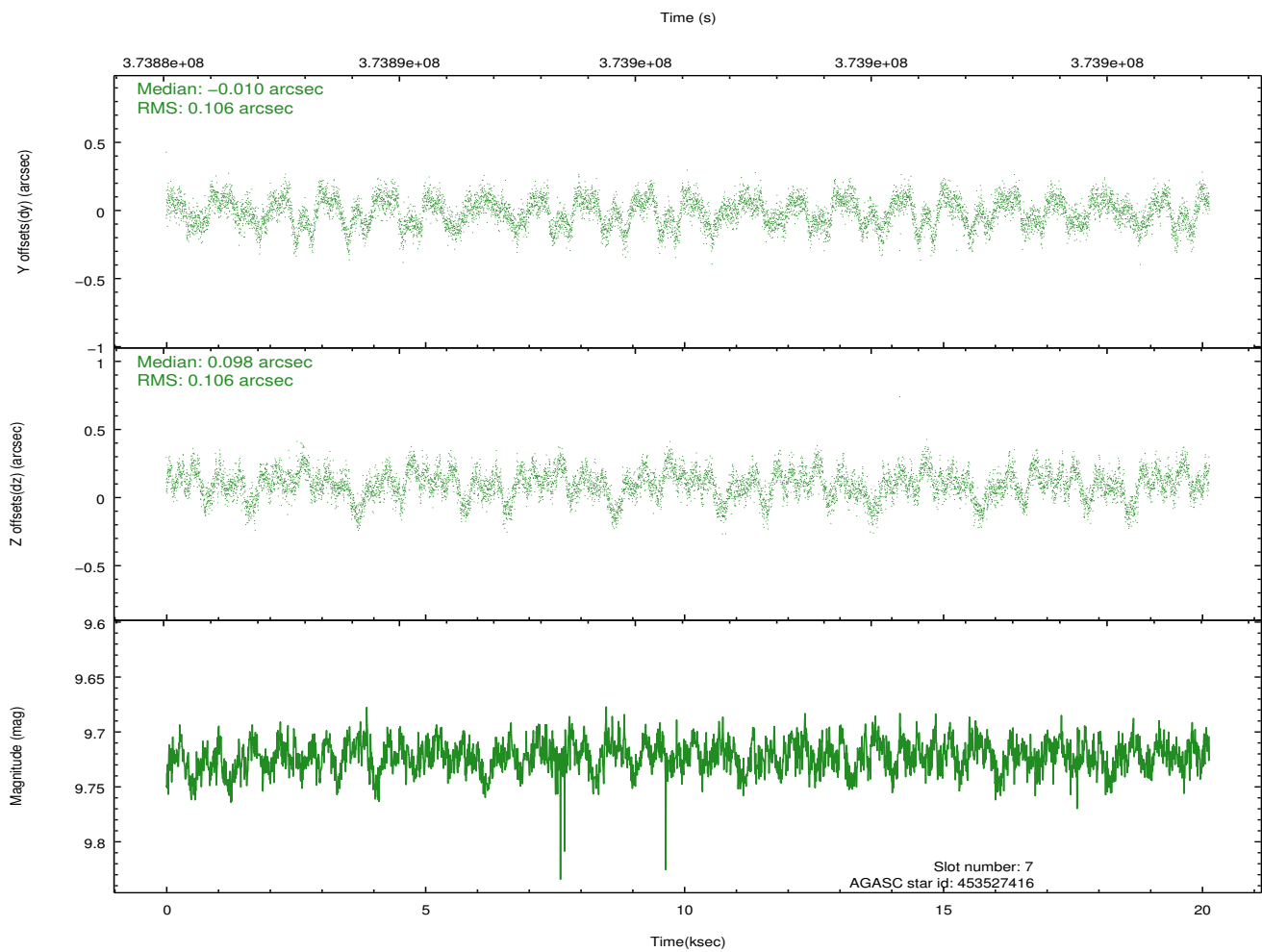
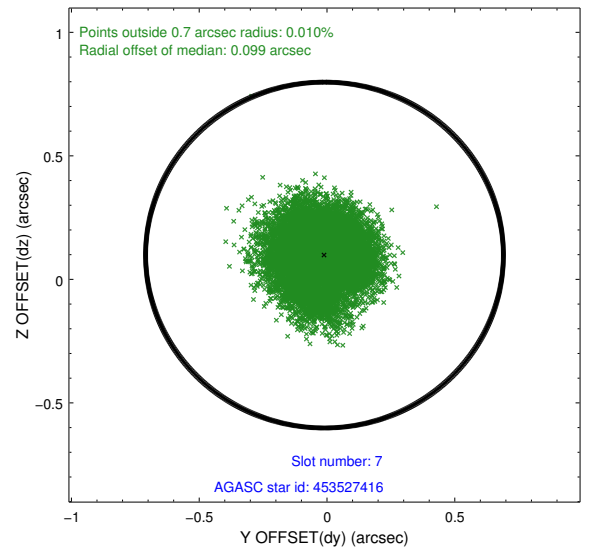
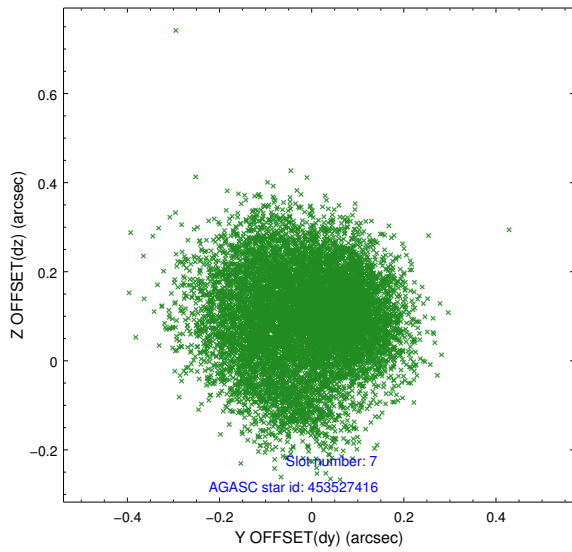
### 2.4.3 Slot 5



### 2.4.4 Slot 6

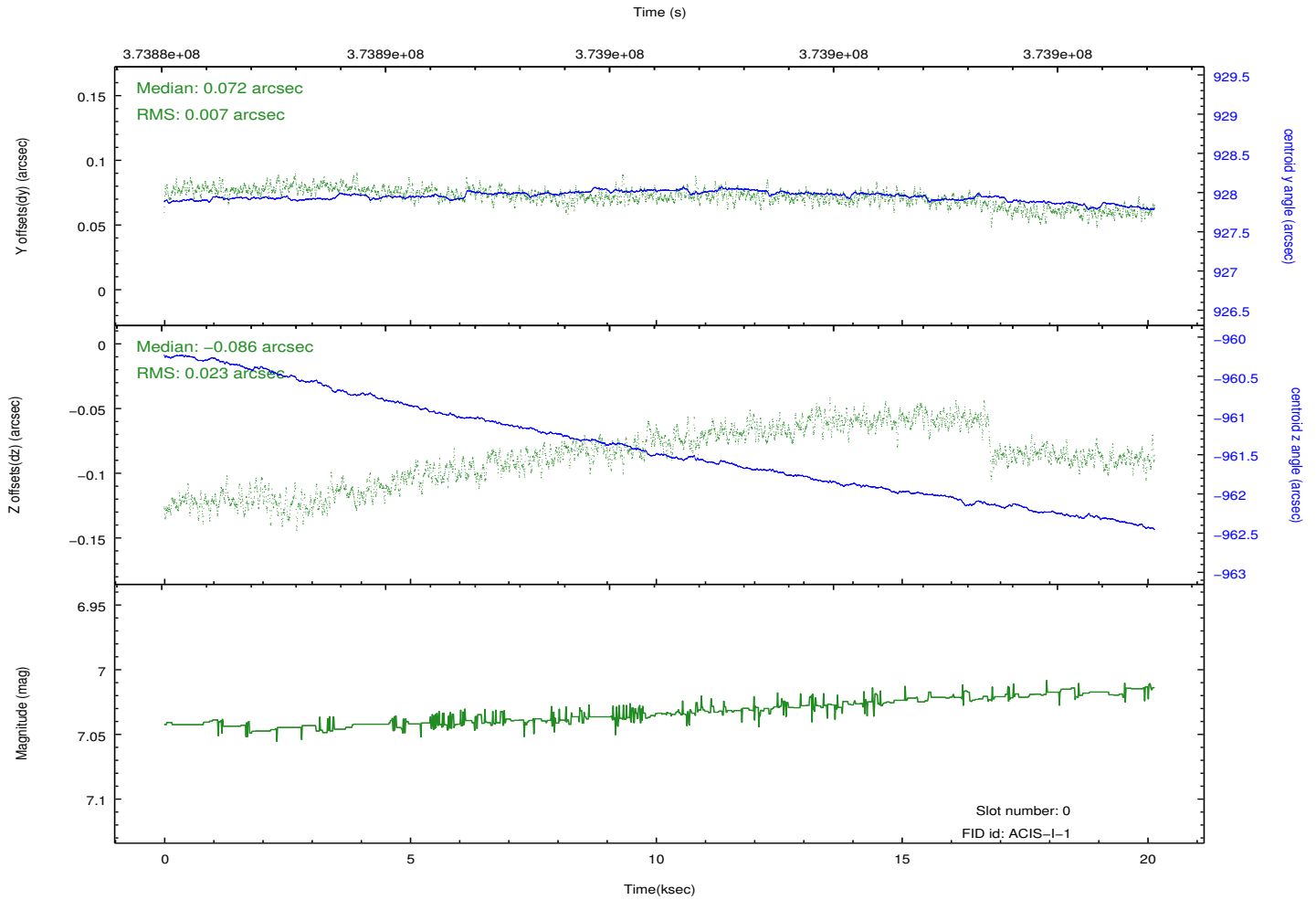
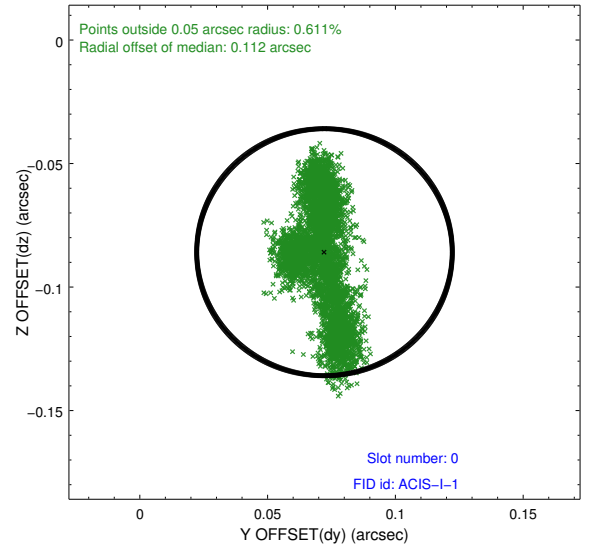
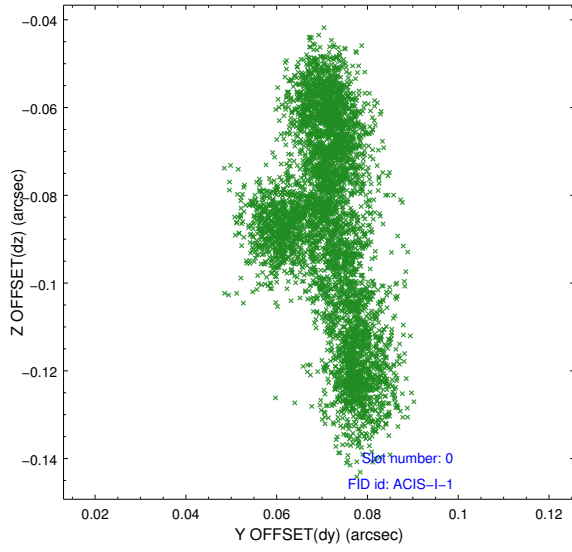


## 2.4.5 Slot 7

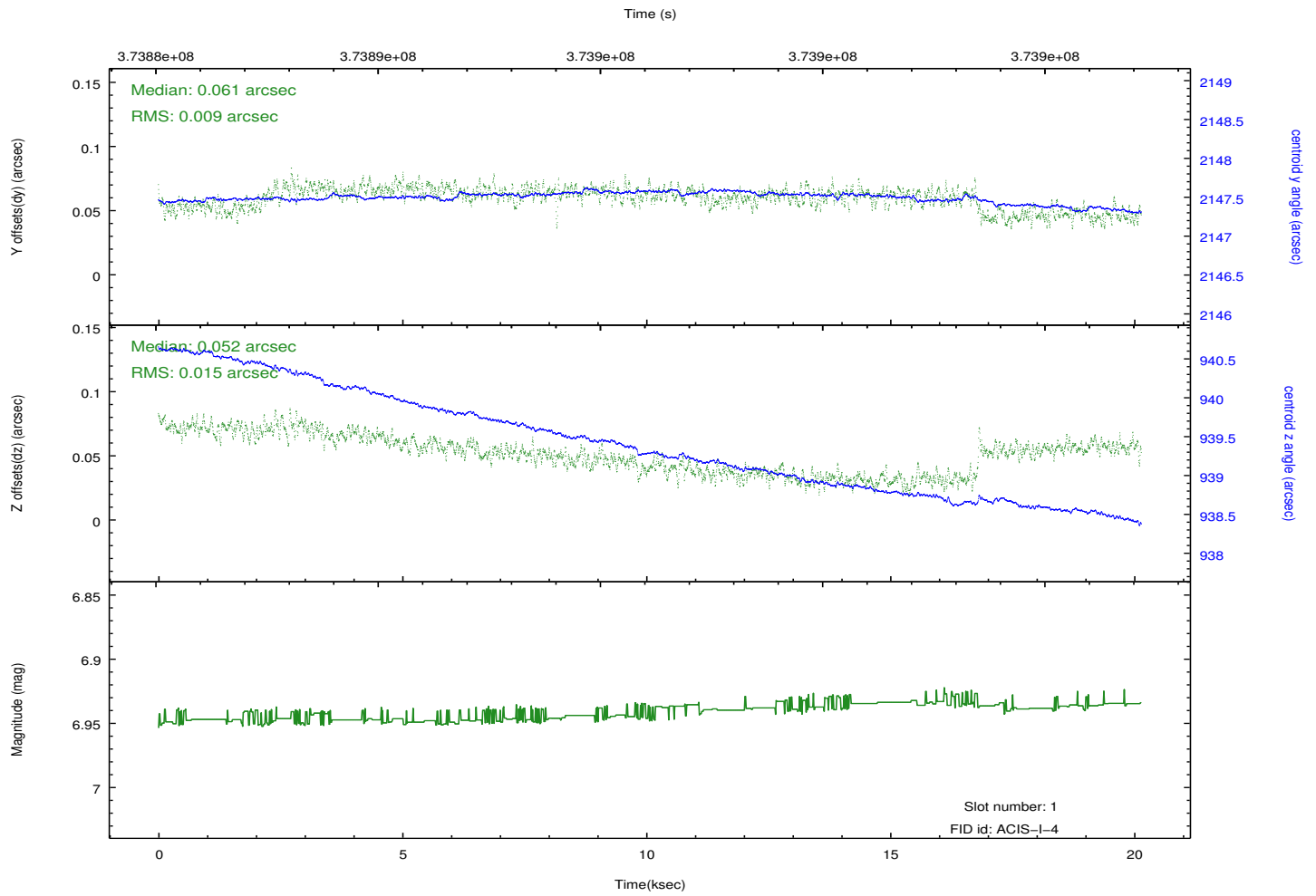
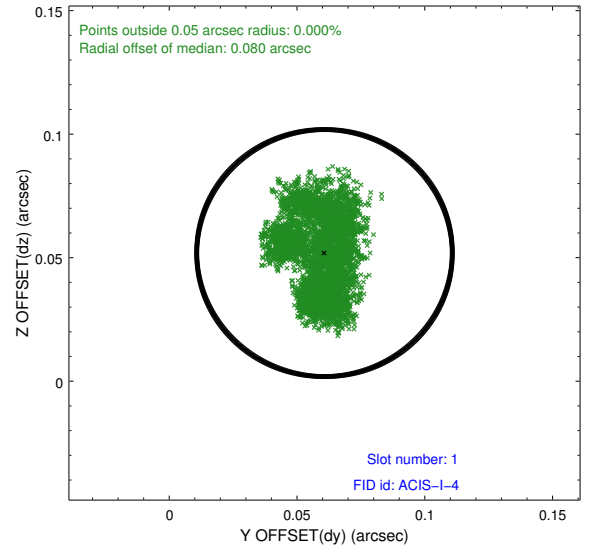
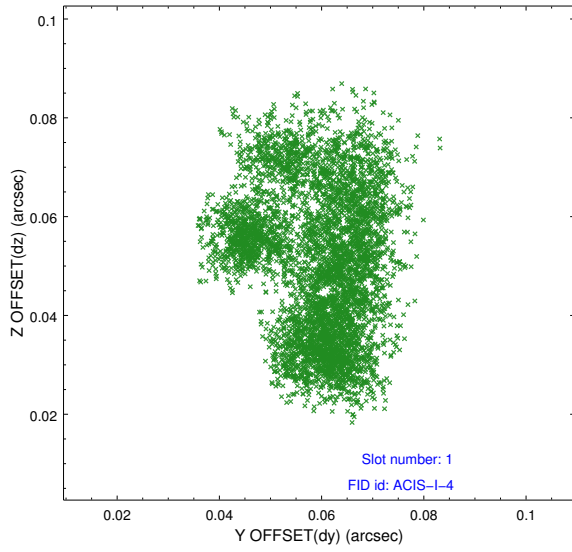


## 2.5 FID Slots

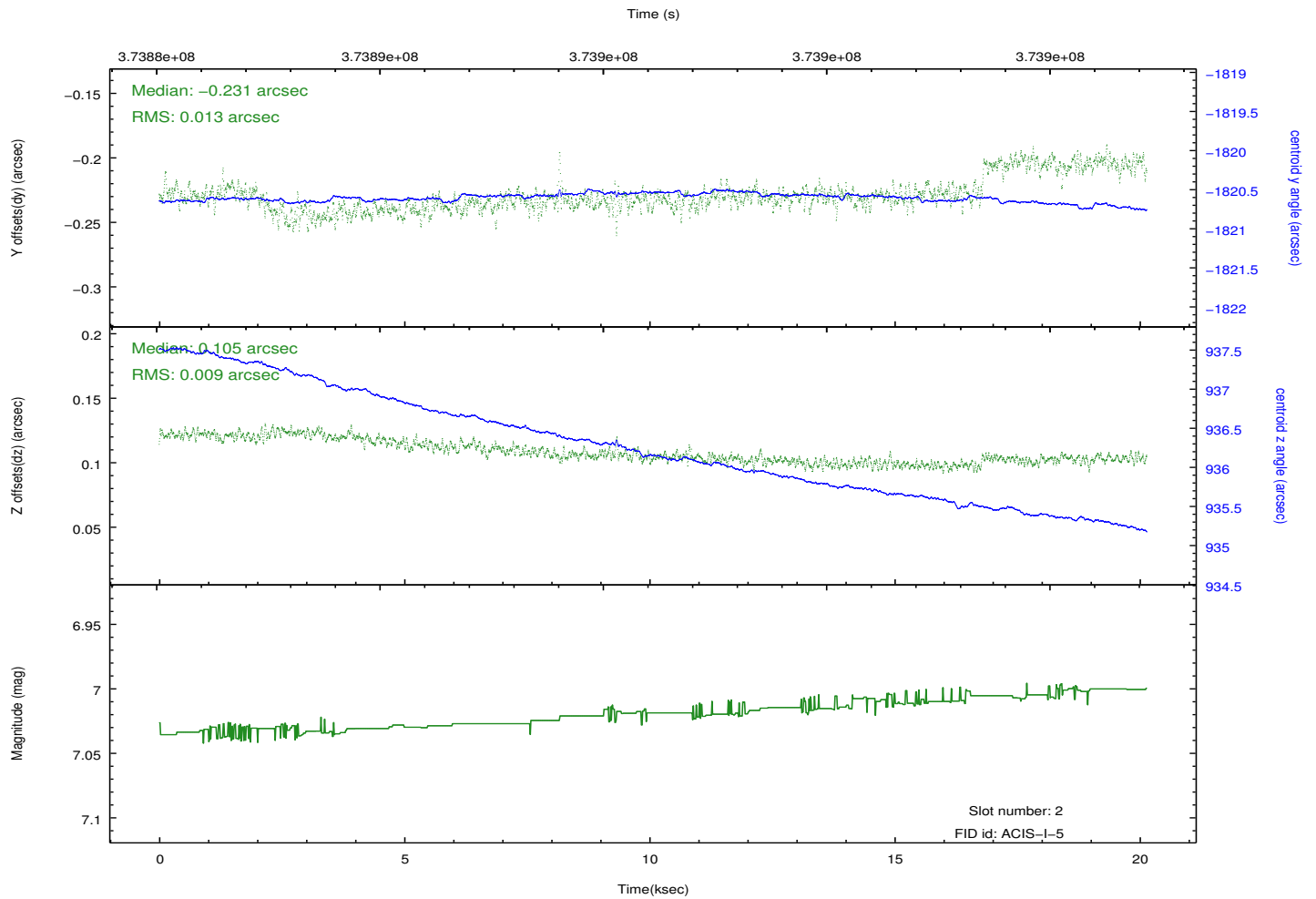
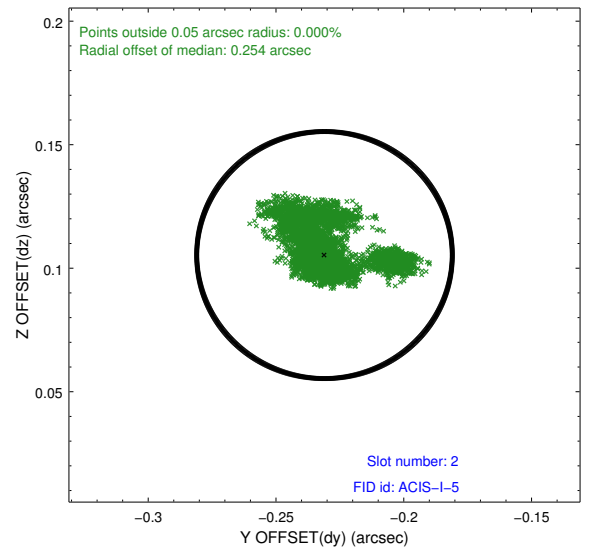
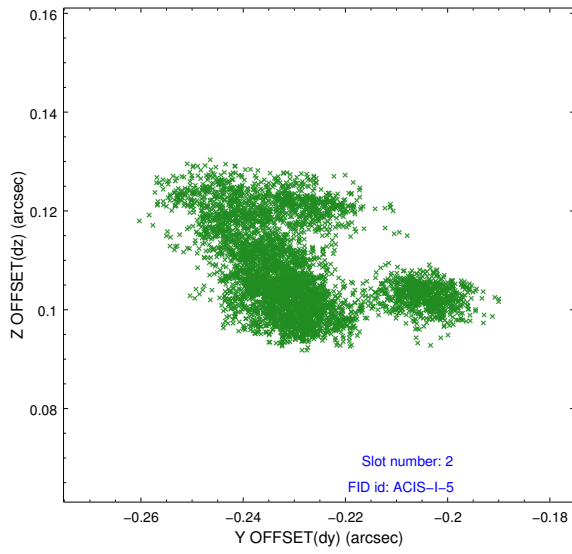
### 2.5.1 Slot 0



## 2.5.2 Slot 1



### 2.5.3 Slot 2



# A Summary

## A.1 Status

V&V Scientist	Beth Sundheim
V&V Date (YYYY-MM-DD)	2012.06.20
V&V Edition	1
V&V Disposition and Status	OK
V&V Charge Time	20.134459164619

## A.2 Comments