

V&V Reference Report

L2 ASCDS Version : 8.4.5

Observation 11805 - L2 Version 2
Chandra X-Ray Center

L2 Processing Date : Jun 27 2012

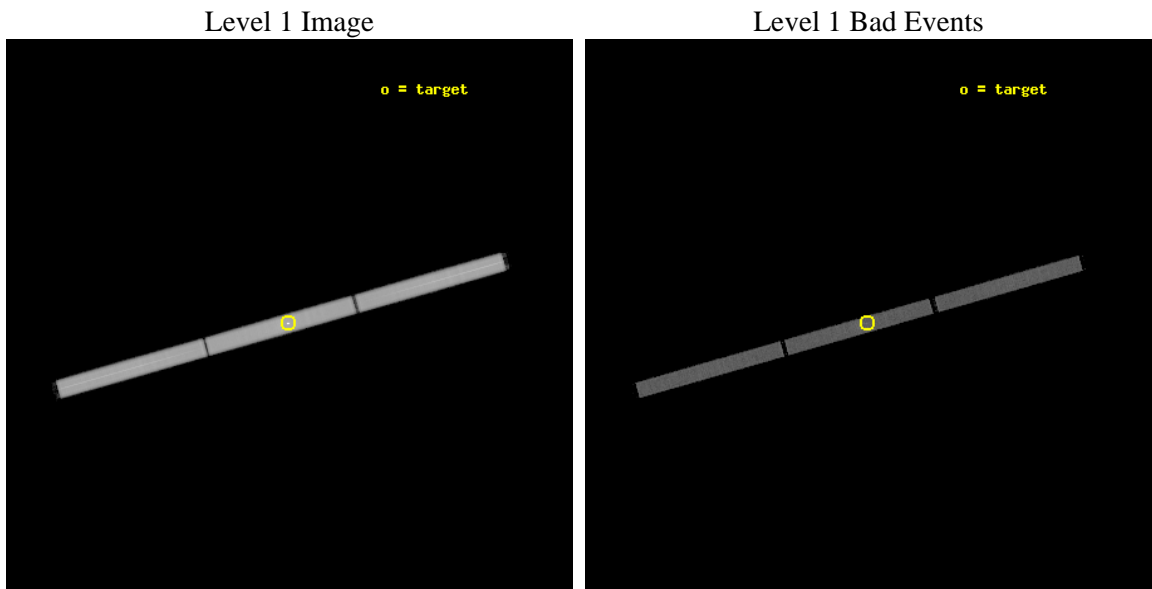
Contents

1	Front	2
2	OBI	3
2.1	OBI	3
2.1.1	Images	3
2.1.2	Parameters	4
2.1.3	Events	4
2.2	Compared Parameters	5
2.3	Aspect	6
2.4	Star Slots	9
2.4.1	Slot 3	9
2.4.2	Slot 4	10
2.4.3	Slot 5	11
2.4.4	Slot 6	12
2.4.5	Slot 7	13
2.5	FID Slots	14
2.5.1	Slot 0	14
2.5.2	Slot 1	15
2.5.3	Slot 2	16
3	Gratings	17
3.1	LETG Arm	17
A	Summary	19
A.1	Status	19
A.2	Comments	19

2 OBI

2.1 OBI

2.1.1 Images



2.1.2 Parameters

obi_num	0	Obi number	sched_exp_time	25000.000000	[s] Scheduled observation exposure time
ascdsver	8.4.5	Processing system revision	ontime	25185.532529473	[s]
caldbver	4.5.0	 	l1events	3164036	Number of level 1 events
date	2012-06-27T18:21:37	Date and time of file creation			
revision	2	Processing version of data			

2.1.3 Events

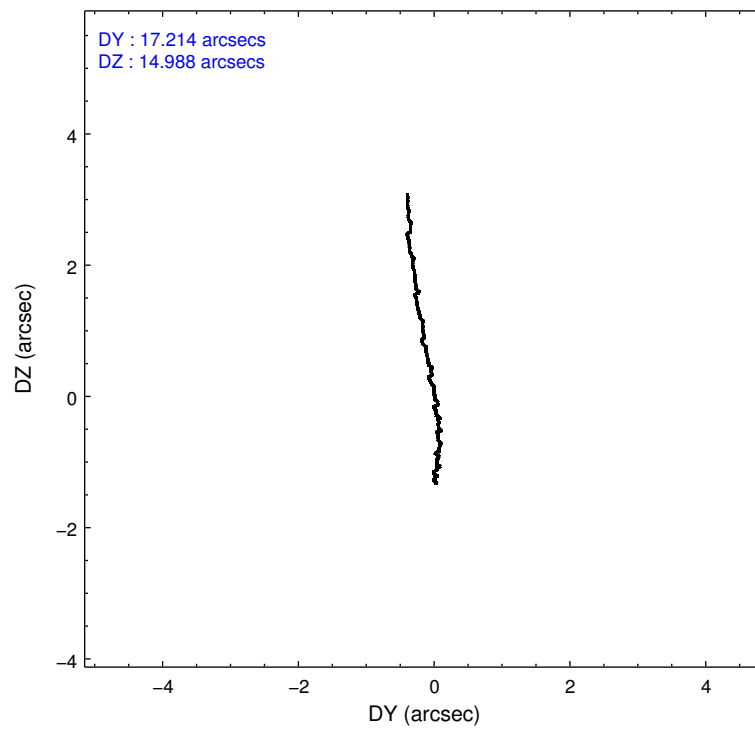
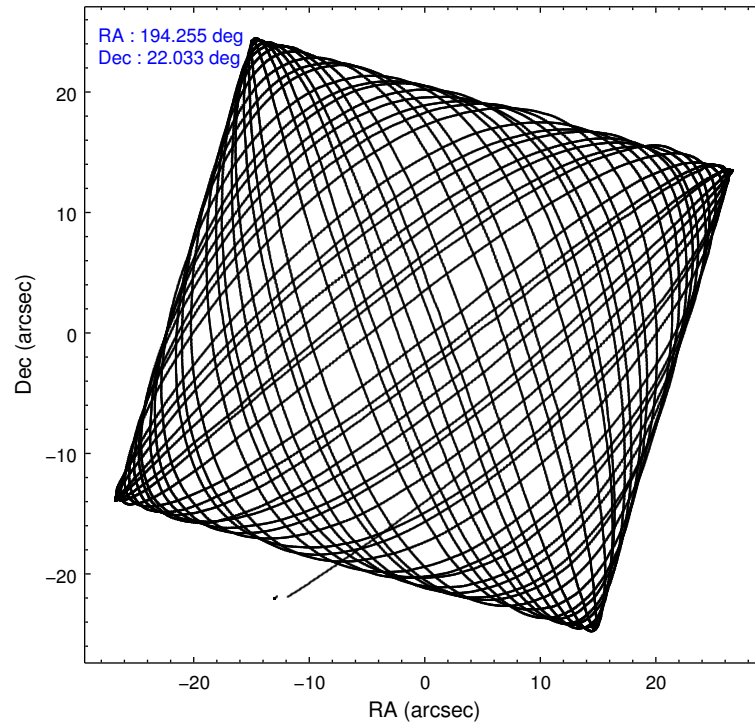
Level 1 Events

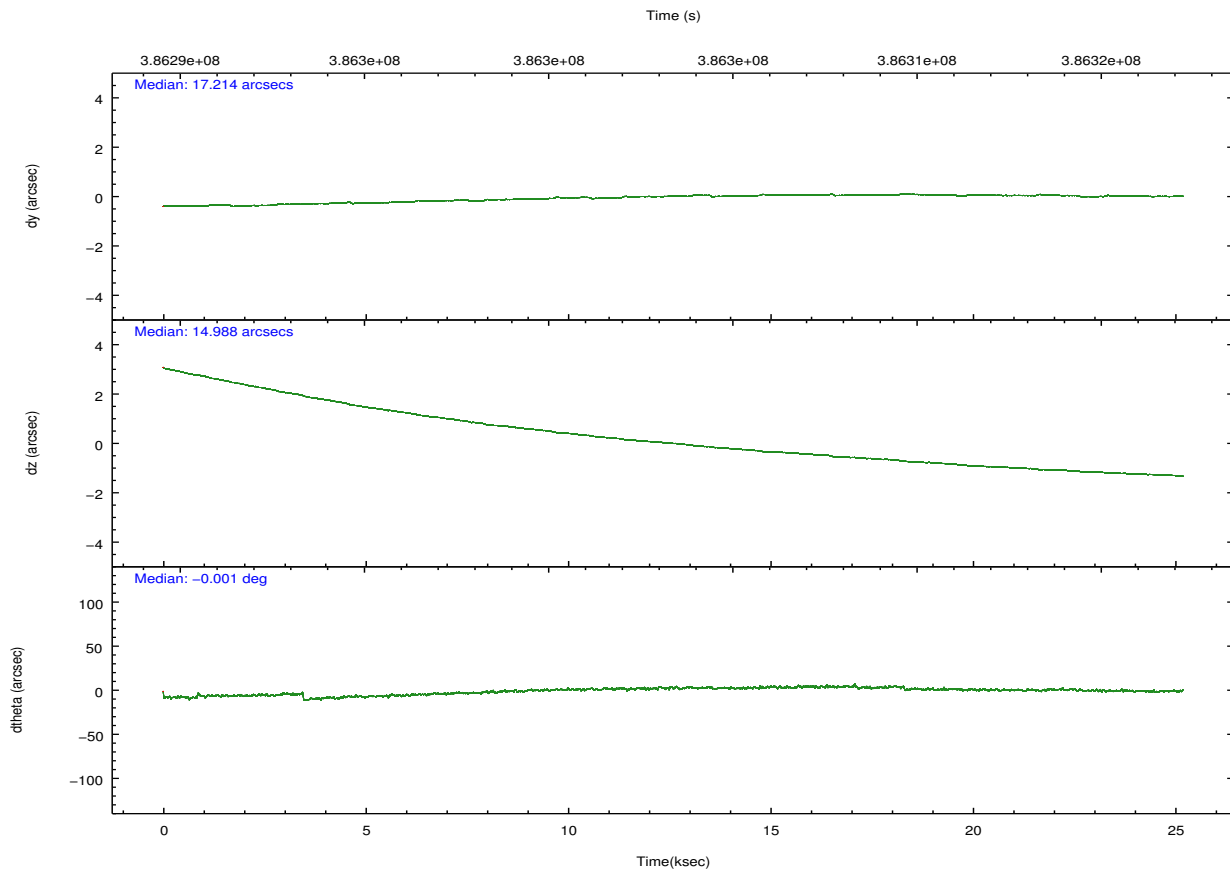
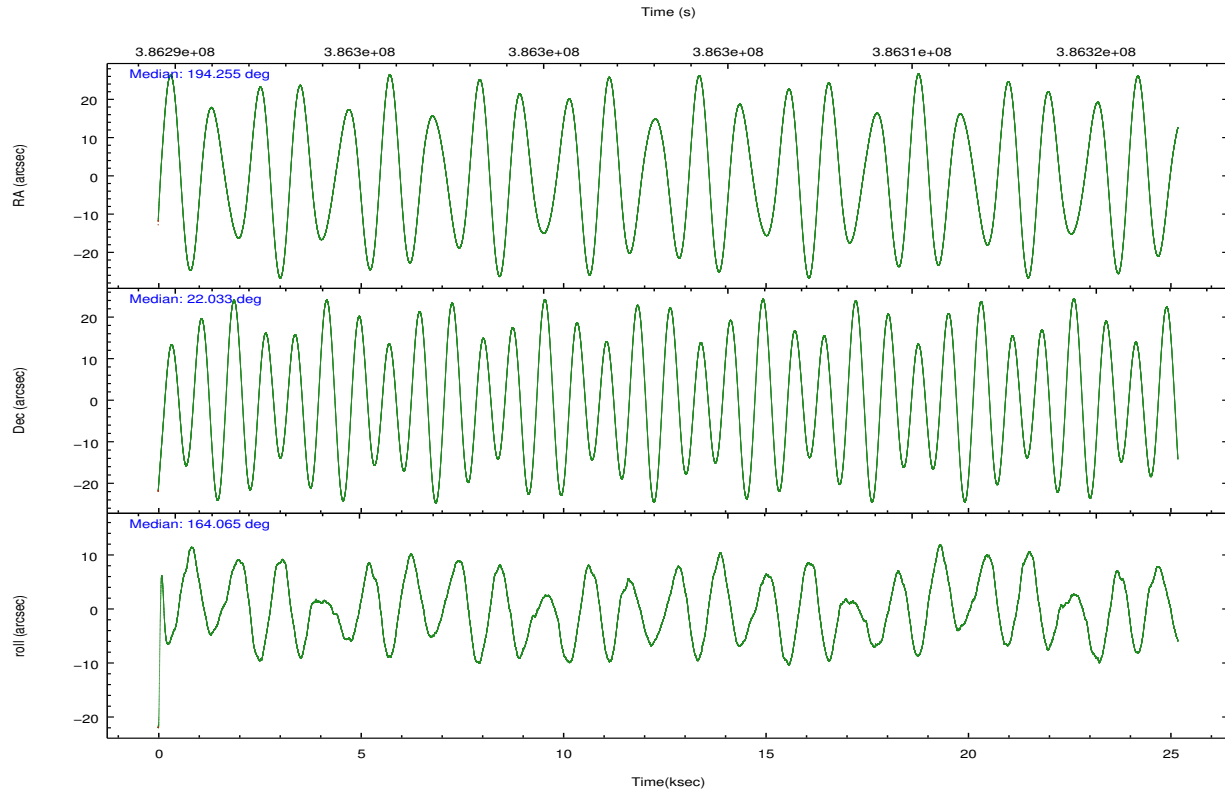
	segment 1	segment 2	segment 3
level 1 events	1058196	1040527	1065313
rejected events	81004	80347	81917
rejected %	7%	7%	7%

2.2 Compared Parameters

Parameter	Planned	Actual	Parameter	Planned	Actual
Instrument	HRC	HRC	Obspar format version number	7	7
Detector	HRC-S	HRC-S	Obspar file type	PREDICTED	ACTUAL
Grating	LETG	LETG	Obspar update status	NONE	UPDATED
Data mode	OBSERVING	OBSERVING			
Observation mode	POINTING	POINTING			
[deg] Pointing RA	194.284287	194.2546755999641			
[deg] Pointing Dec	22.040984	22.03264281683296			
[deg] Pointing Roll	163.990734	164.069157497598			
[mm] SIM focus pos	-1.429586	-1.428180813131781			
[mm] SIM defocus	0.1037507710433287	0.1051558262725154			
[mm] SIM translation stage pos	250.455976	250.466033080201			
[mm] SIM translation stage offset	0	-0.01005468664627074			
[s] Observation start time (MET)	386290957.184000	386289994.0343			
Observation start date	2010-03-29T23:01:31	2010-03-29T22:46:34			
[s] Observation end time (MET)	386315957.184000	386317400.48569			
Observation end date	2010-03-30T05:58:11	2010-03-30T06:23:20			

2.3 Aspect



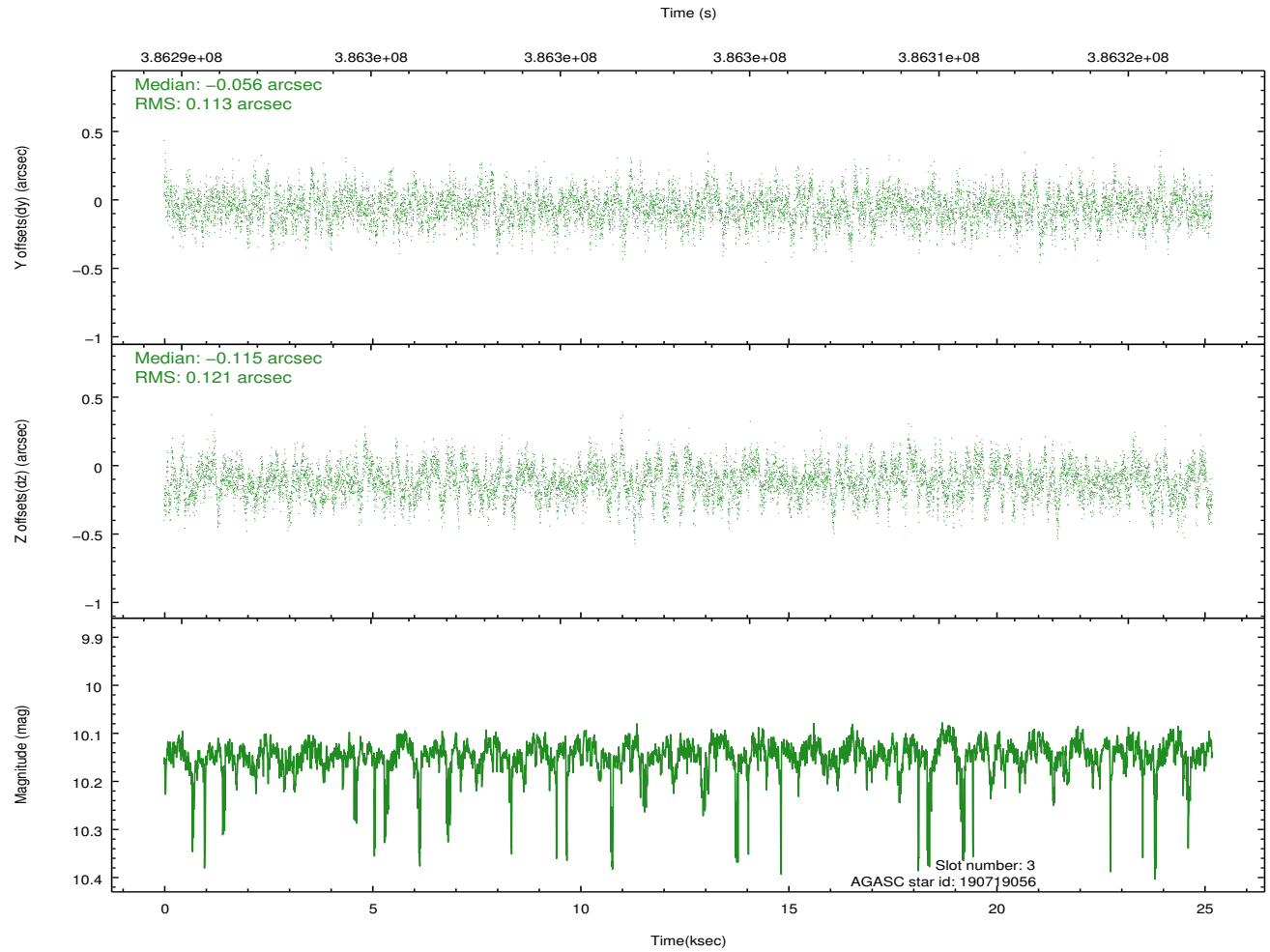
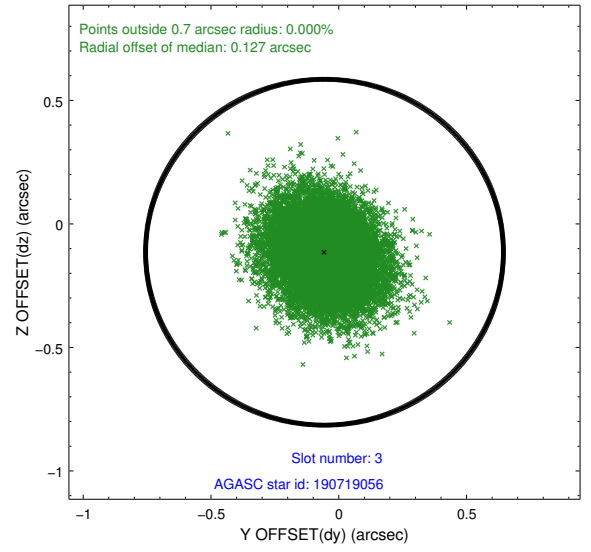
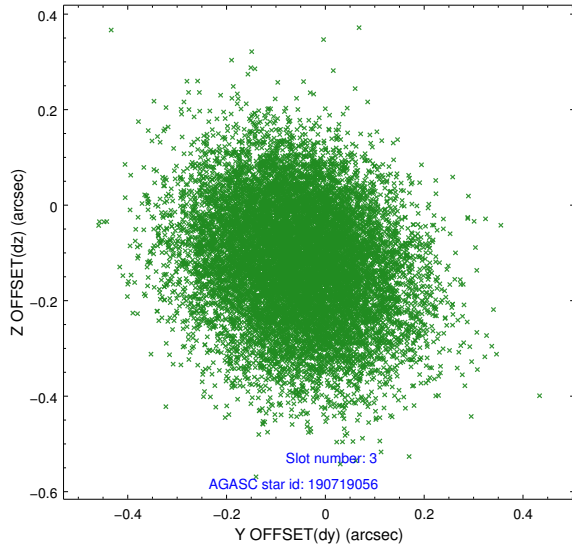


Slot Statistics

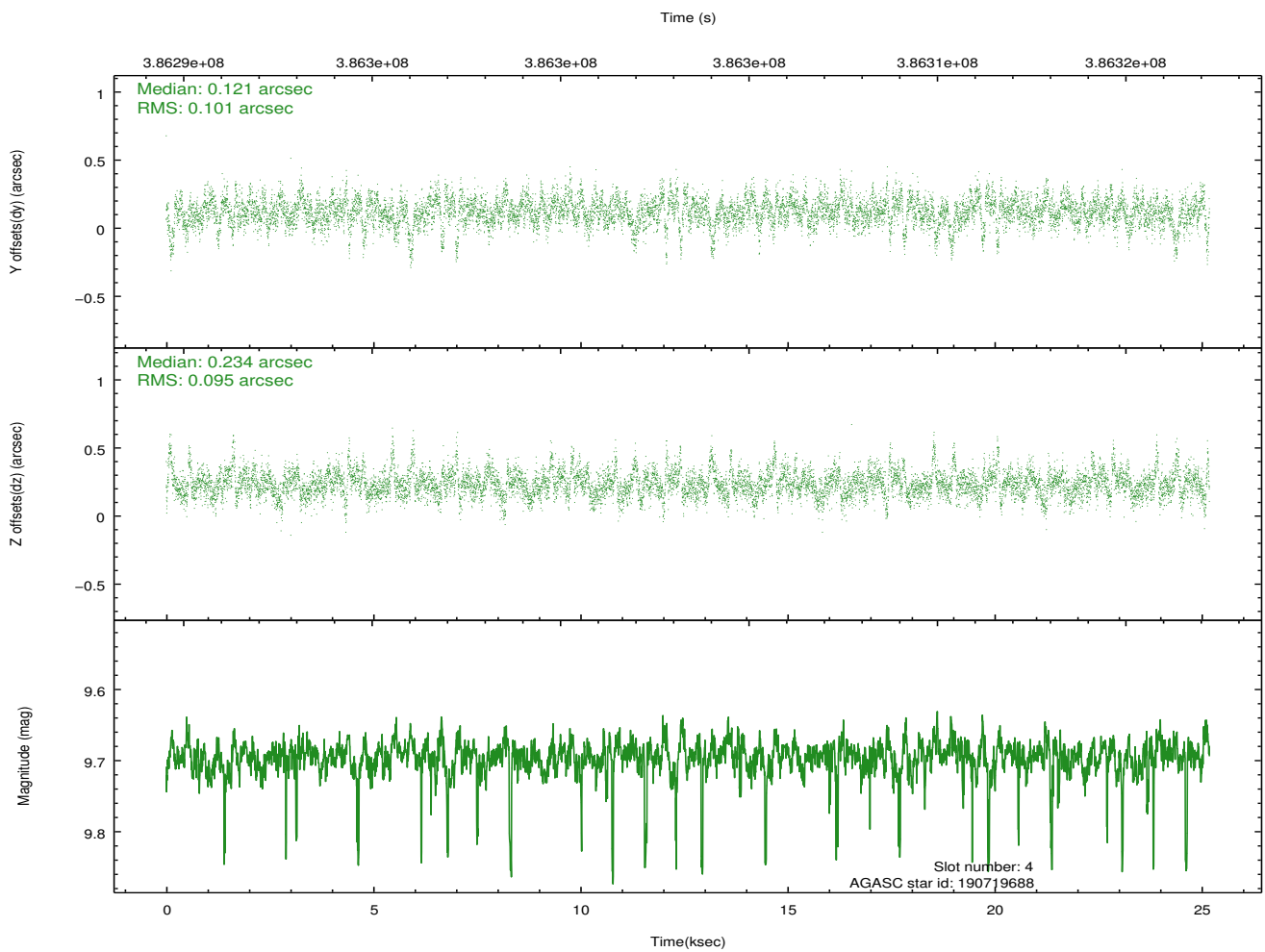
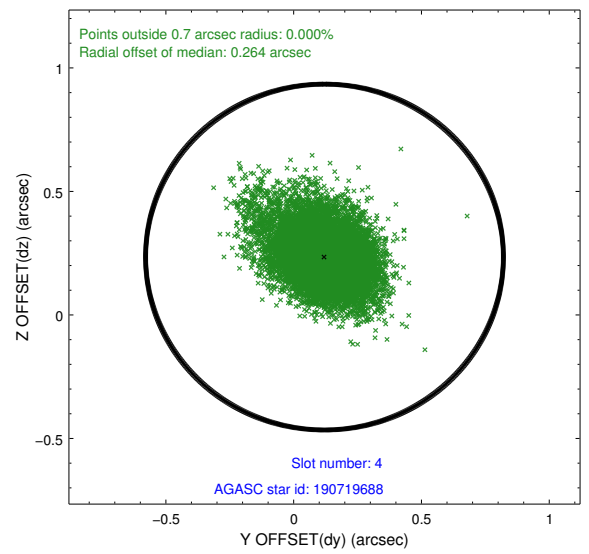
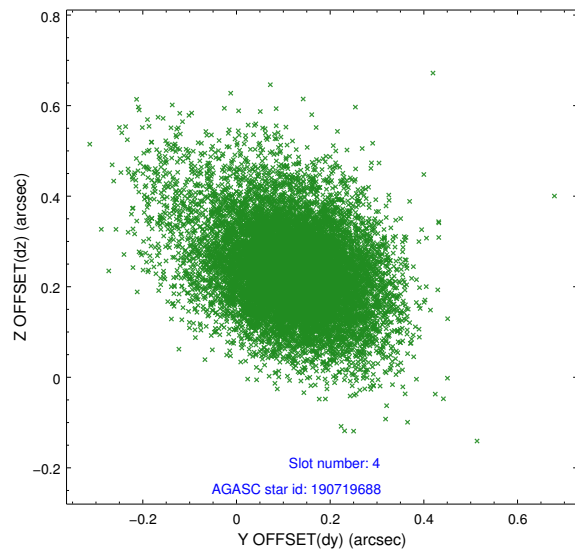
slot	status	id	mag	n_pts	med_dy	med_dz	dr1	dr2	ra	dec	mean_y	mean_z
0	FID	HRC-S-2	7.06	6143	0.213	-0.120	0.024	0.052	0.000000	0.000000	1228.19	-456.77
1	FID	HRC-S-3	7.08	6141	-0.035	-0.065	0.012	0.025	0.000000	0.000000	-1174.22	565.46
2	FID	HRC-S-4	7.02	6139	0.227	-0.111	0.022	0.041	0.000000	0.000000	1226.64	568.05
3	GUIDE	190719056	10.15	12224	-0.056	-0.115	0.178	0.284	194.588717	21.325530	-1691.37	2193.44
4	GUIDE	190719688	9.69	12213	0.121	0.234	0.139	0.253	193.909737	22.180853	1339.72	-140.19
5	GUIDE	190720152	7.12	12283	-0.121	-0.293	0.085	0.141	193.666732	22.107929	2047.11	332.84
6	GUIDE	190843704	7.36	12284	-0.095	0.109	0.084	0.131	194.670543	22.042885	-1237.60	-360.92
7	GUIDE	190845144	8.87	12274	0.154	0.063	0.110	0.184	194.692633	22.213679	-1135.56	-973.83

2.4 Star Slots

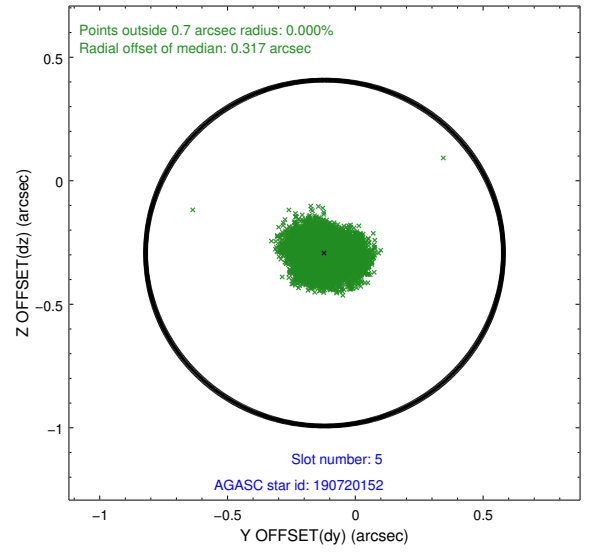
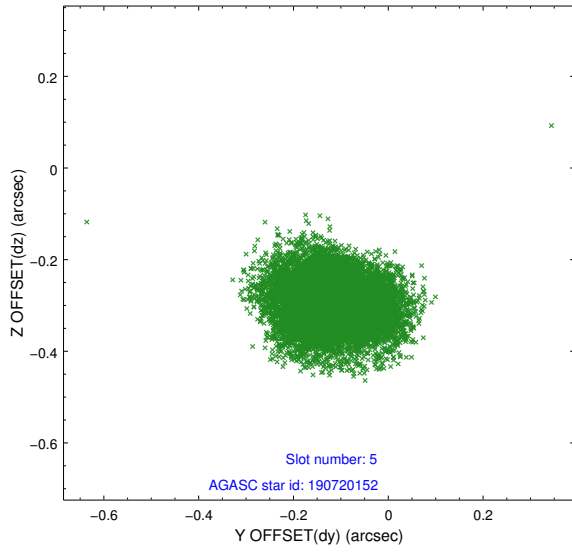
2.4.1 Slot 3



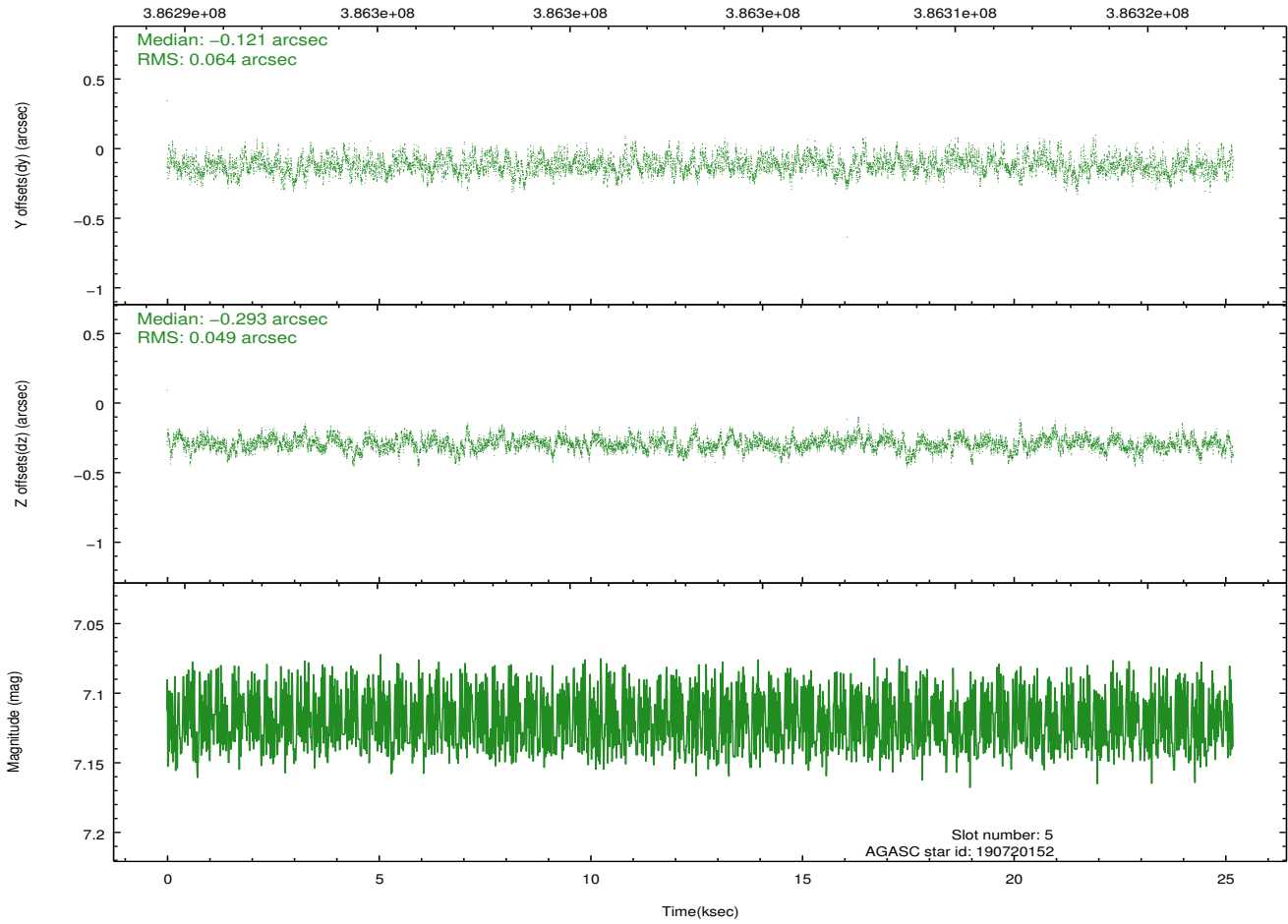
2.4.2 Slot 4



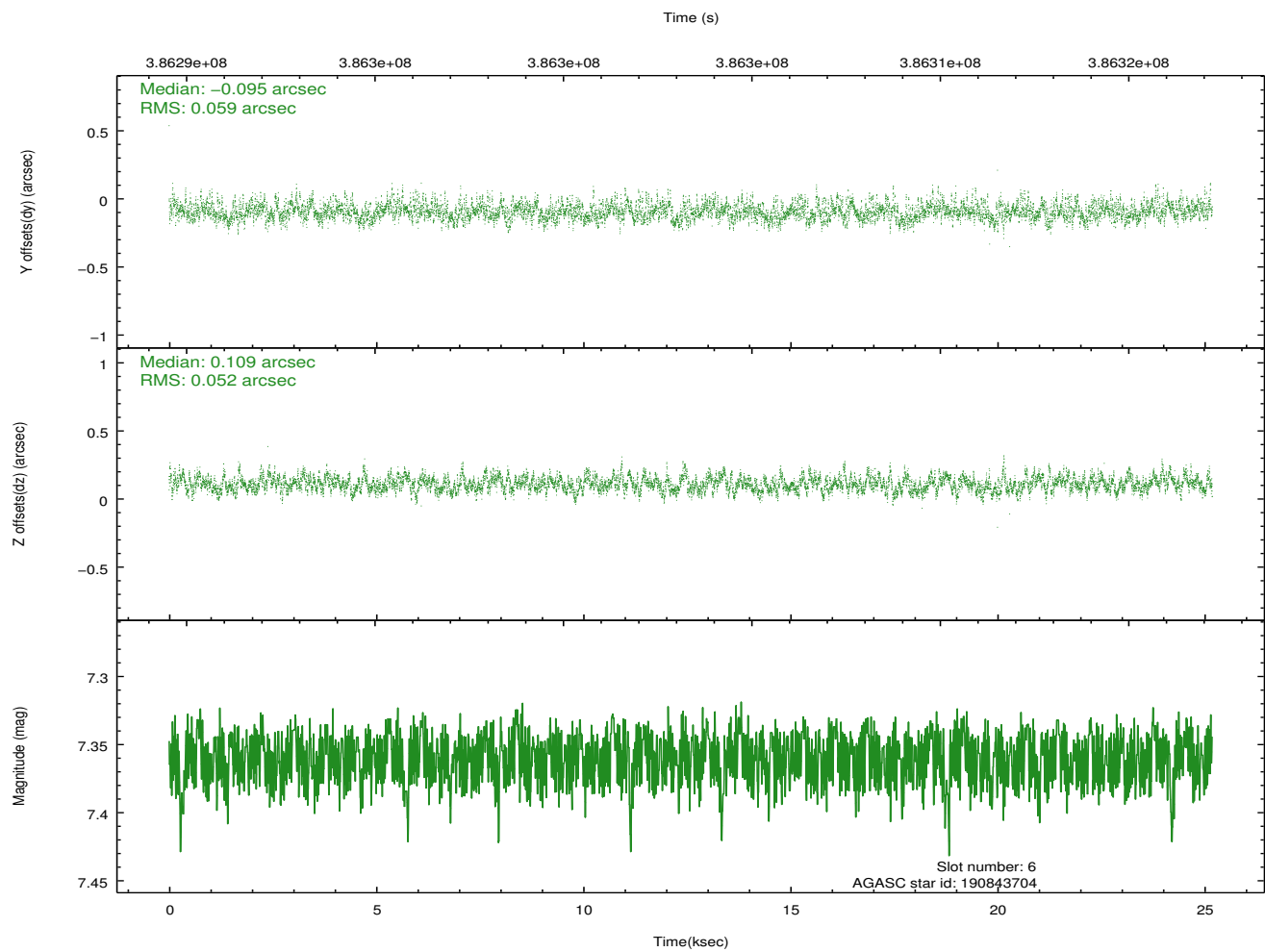
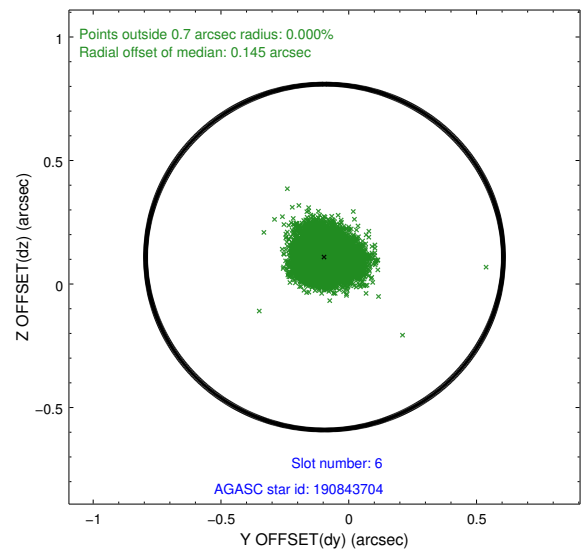
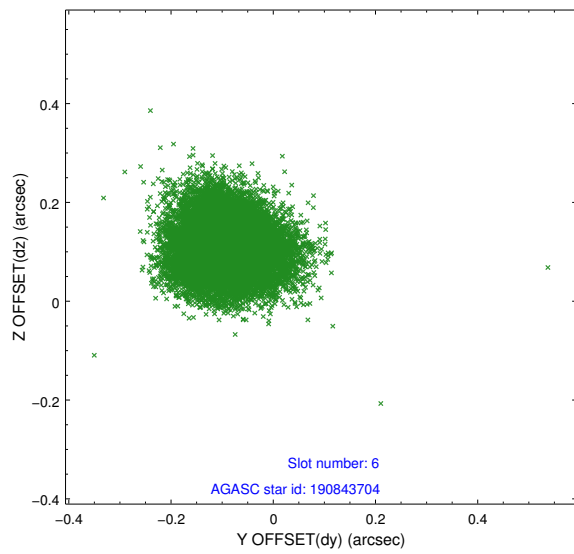
2.4.3 Slot 5



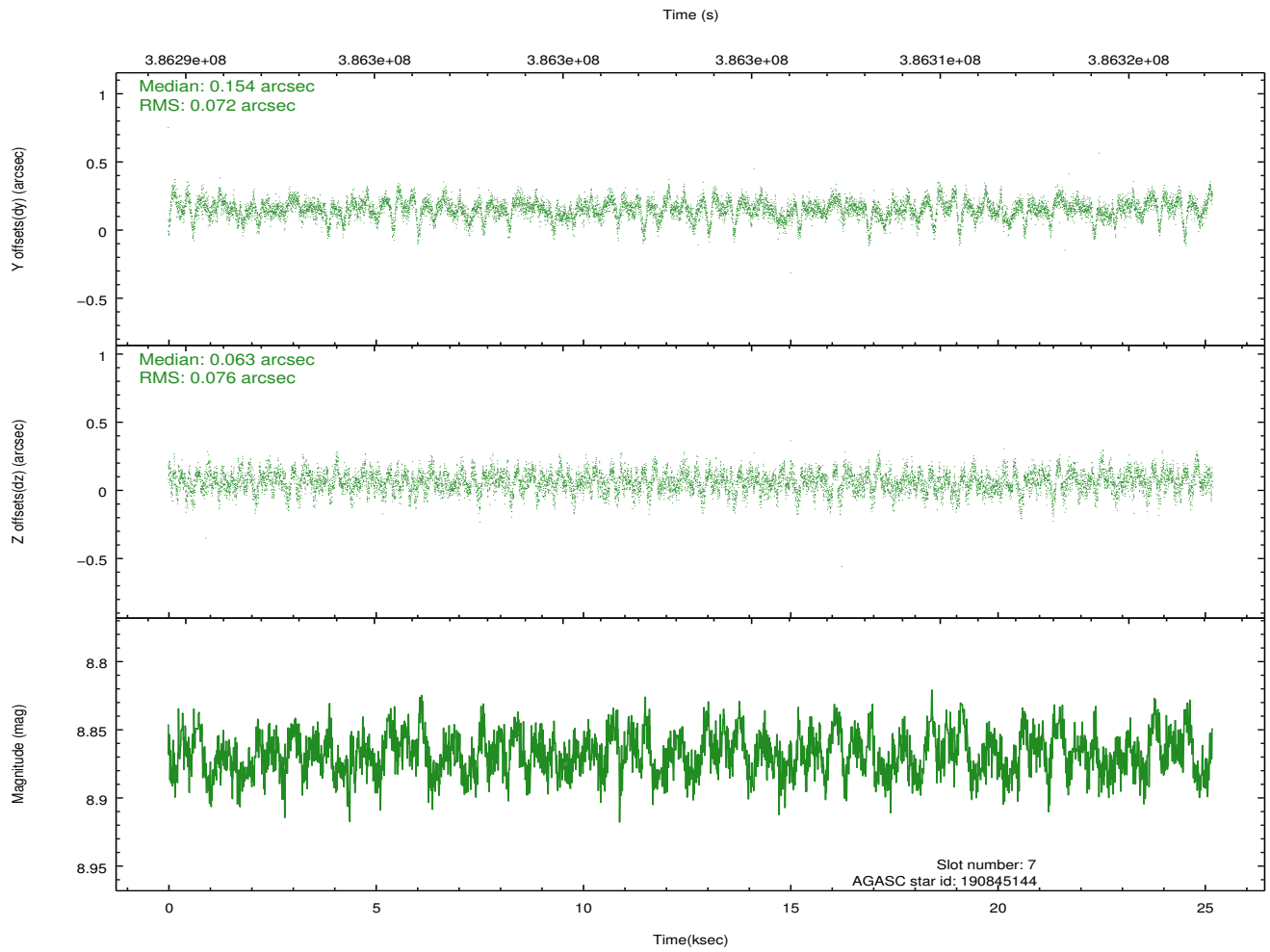
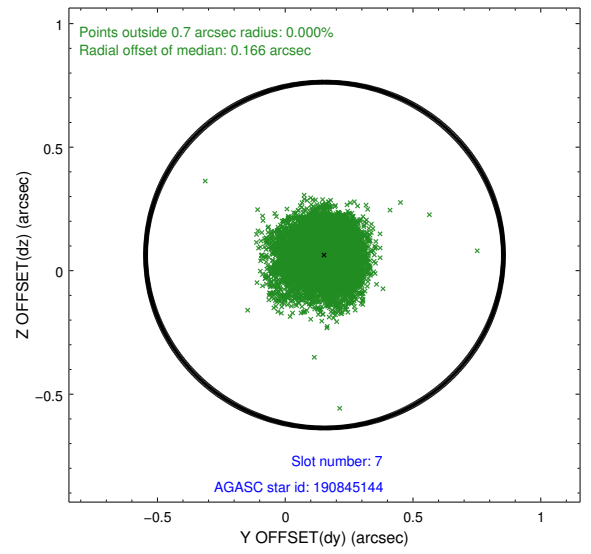
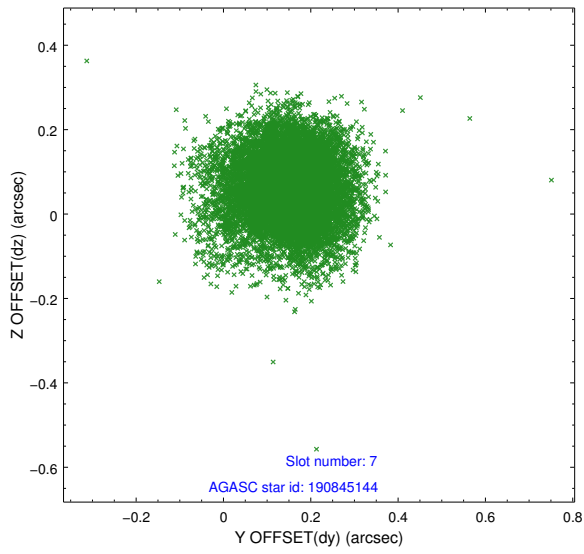
Time (s)



2.4.4 Slot 6

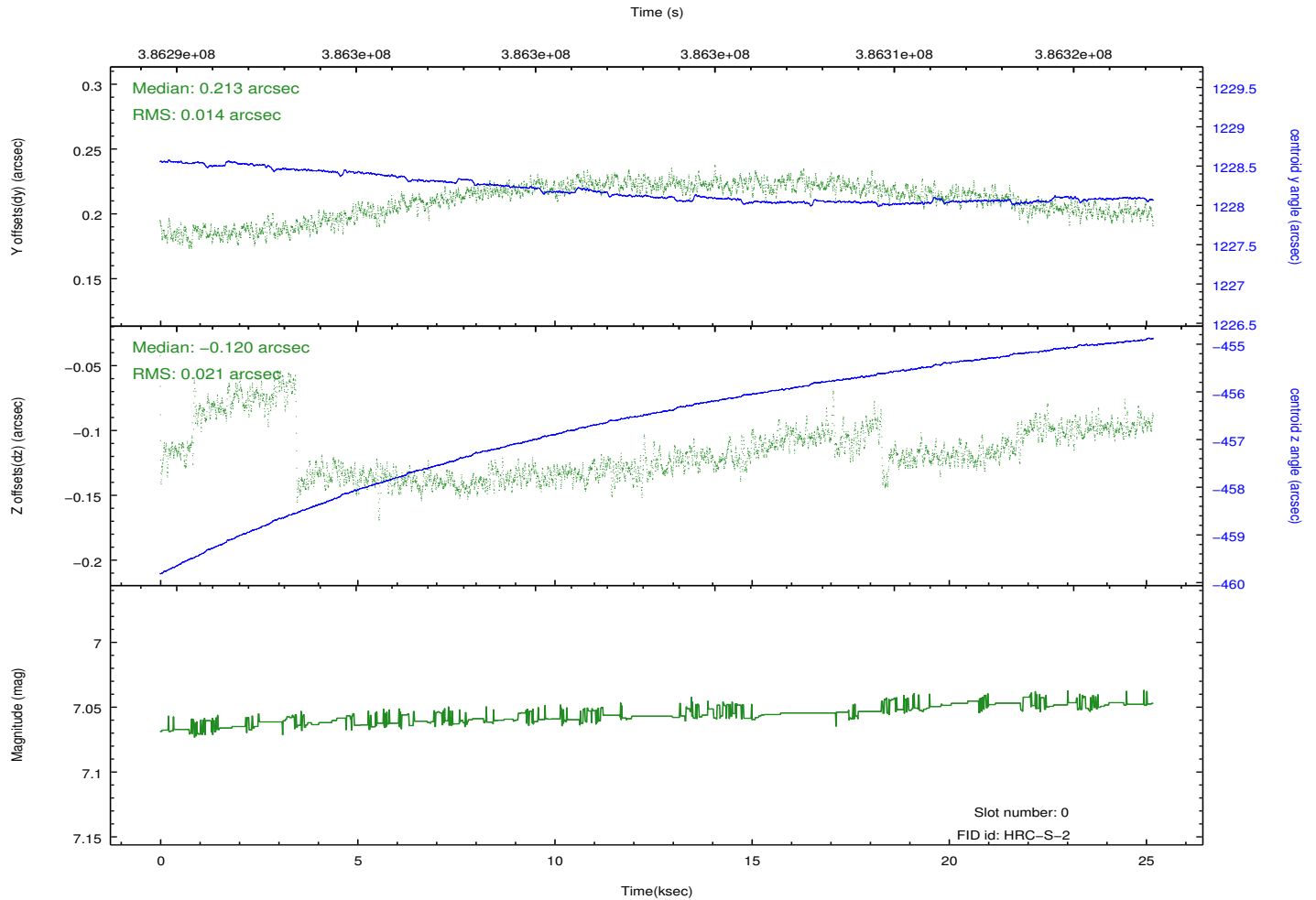
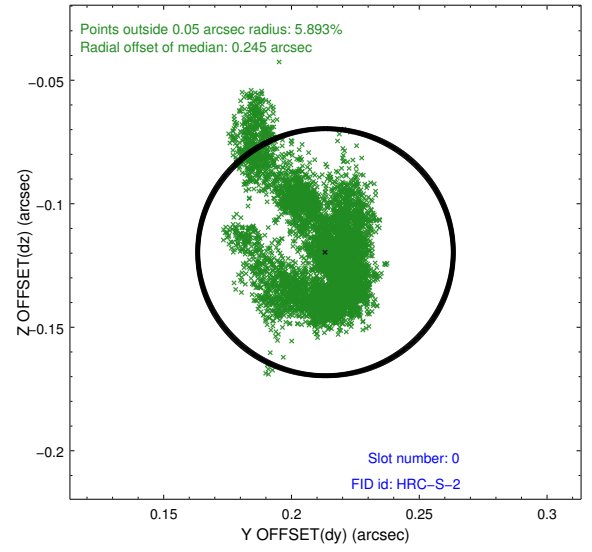
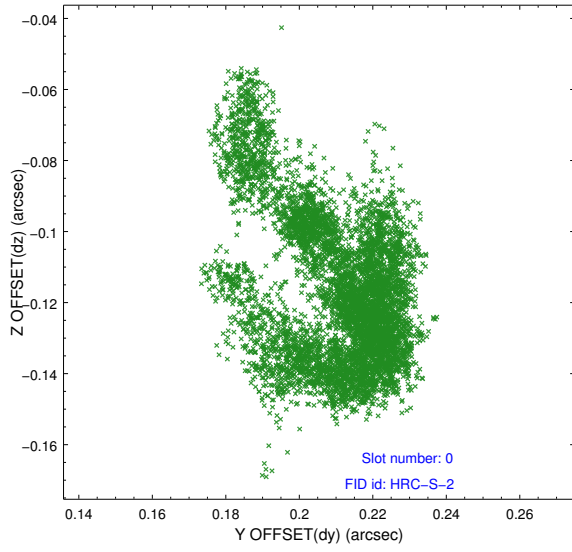


2.4.5 Slot 7

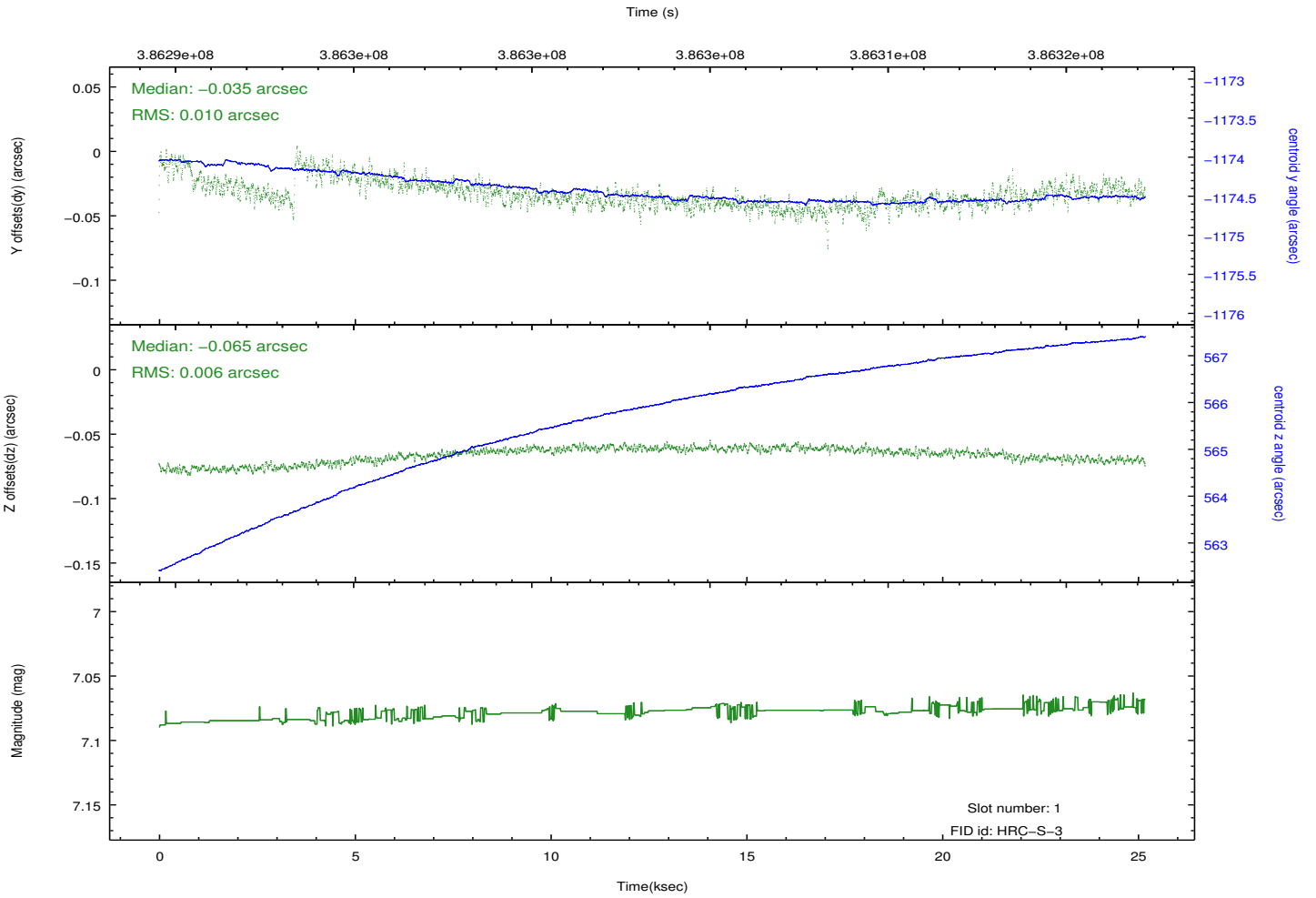
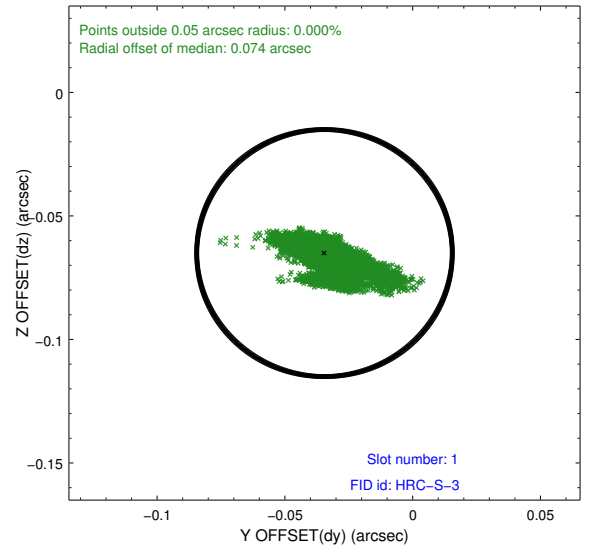
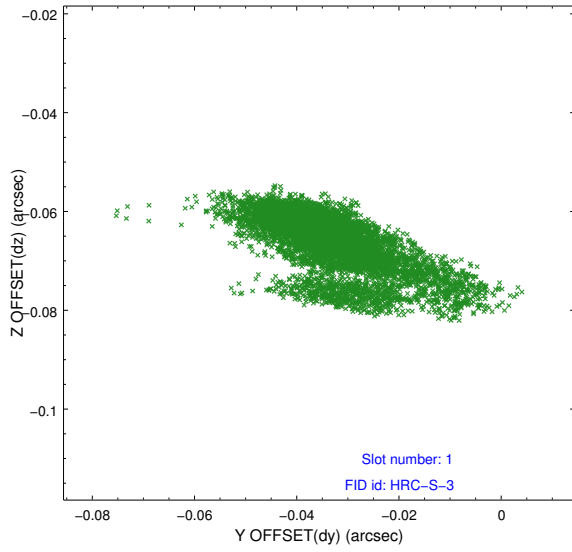


2.5 FID Slots

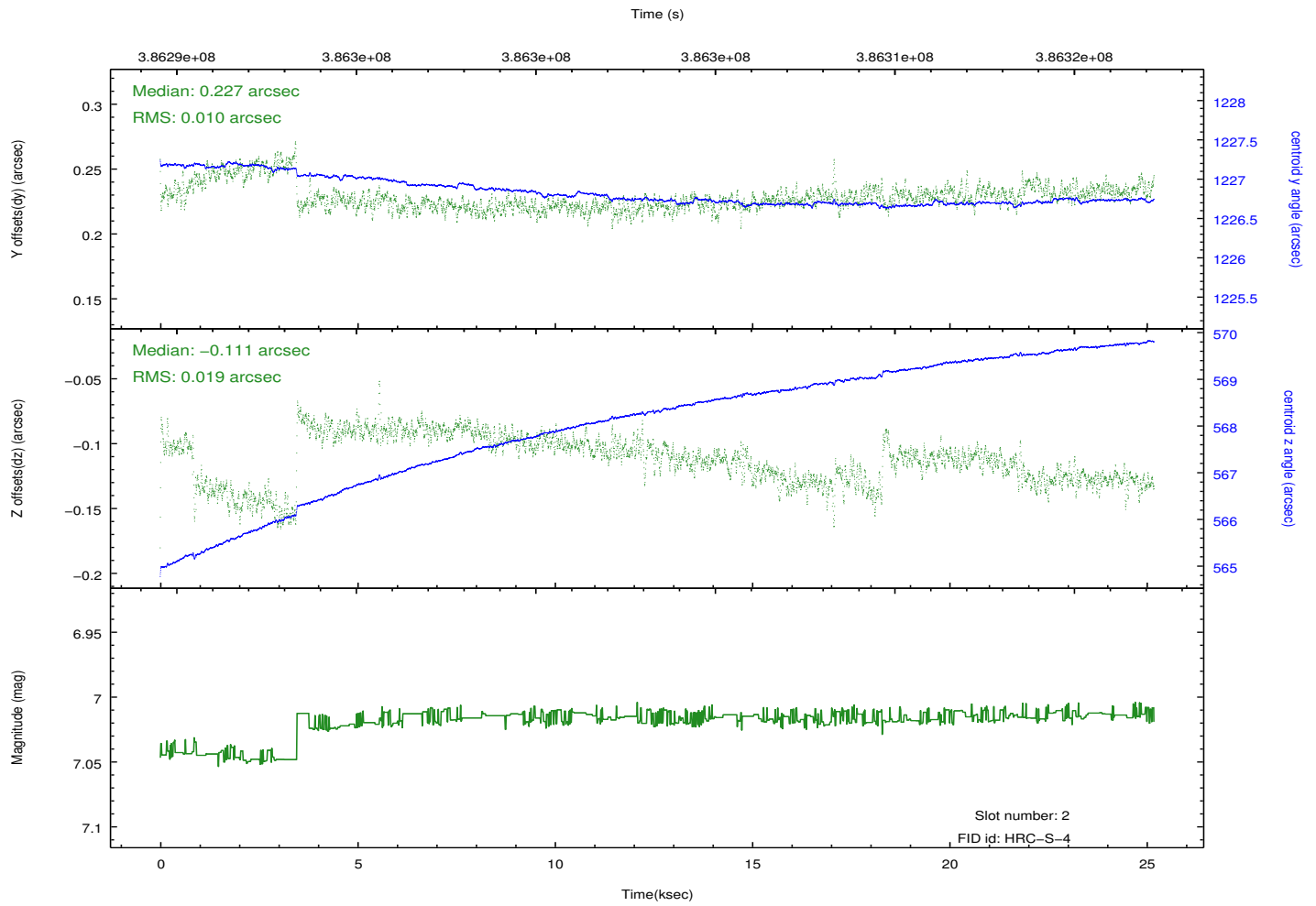
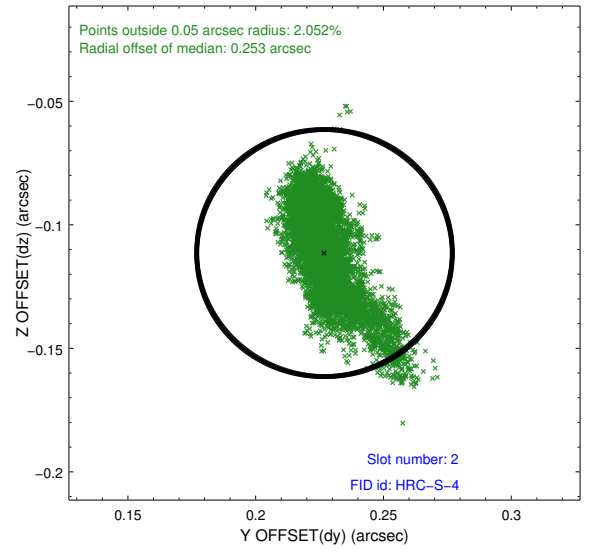
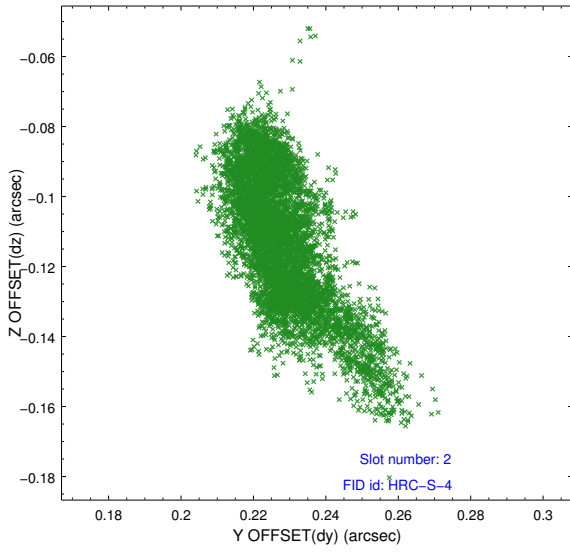
2.5.1 Slot 0



2.5.2 Slot 1

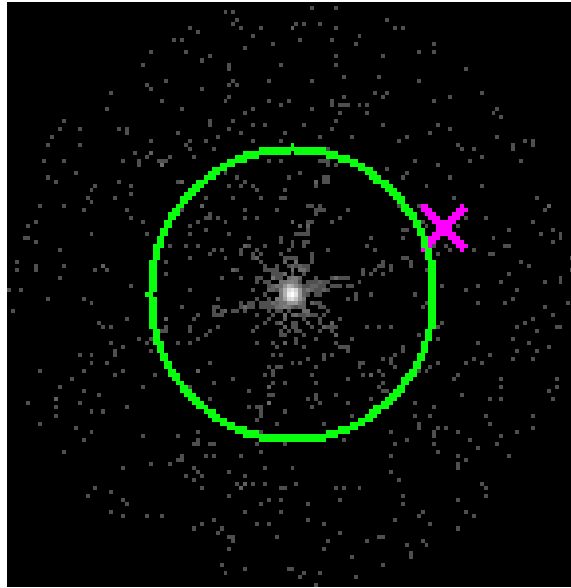


2.5.3 Slot 2

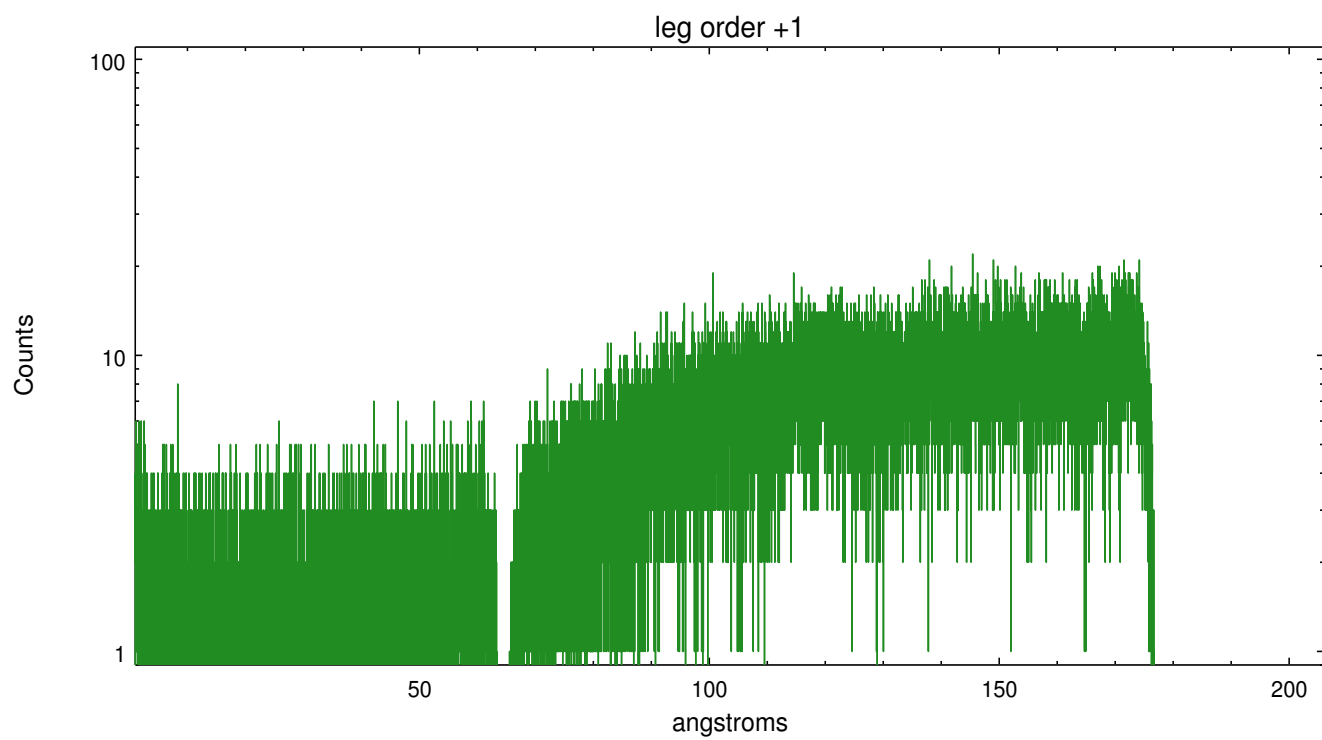
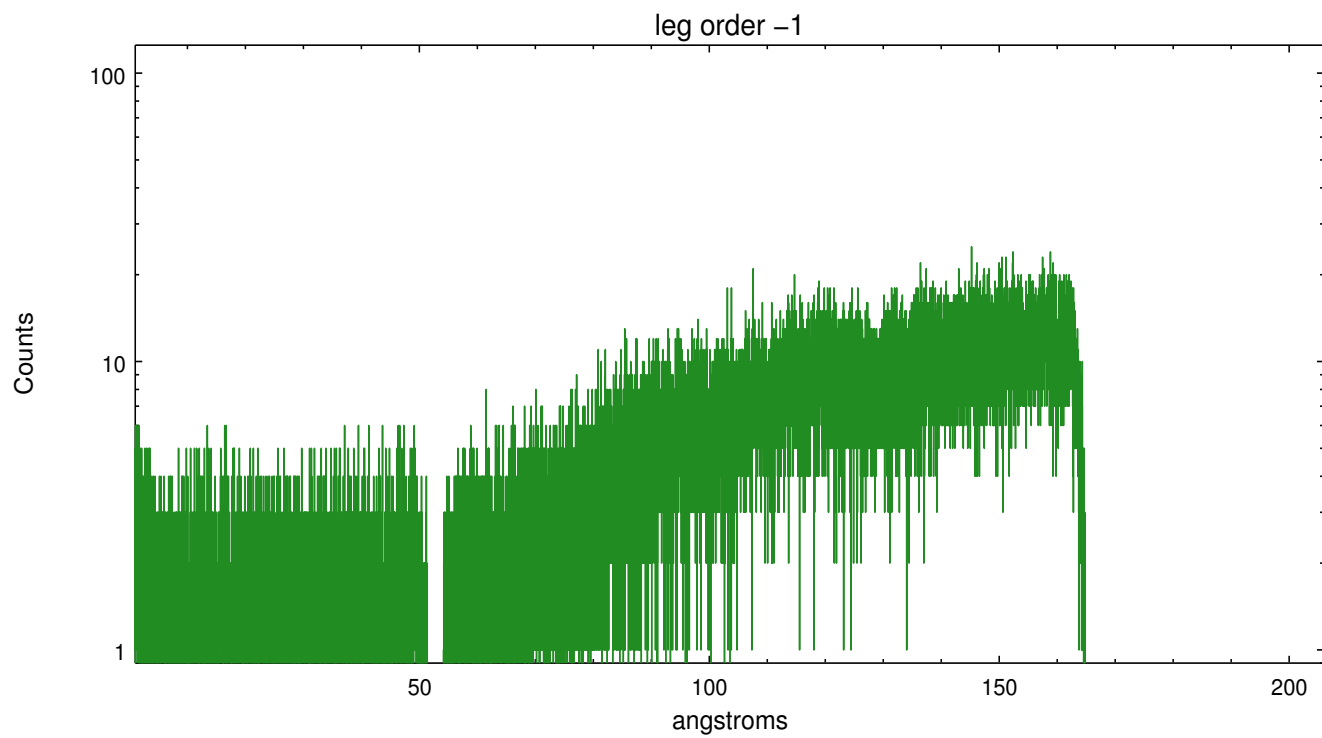


3 Gratings

3.1 LETG Arm



LETG Zero Order



A Summary

A.1 Status

V&V Scientist	Joy Nichols
V&V Date (YYYY-MM-DD)	2012.07.02
V&V Edition	1
V&V Disposition and Status	OK
V&V Charge Time	25.185532529831

A.2 Comments