

V&V Reference Report

L2 ASCDS Version : 8.4.5

Observation 11955 - L2 Version 2
Chandra X-Ray Center

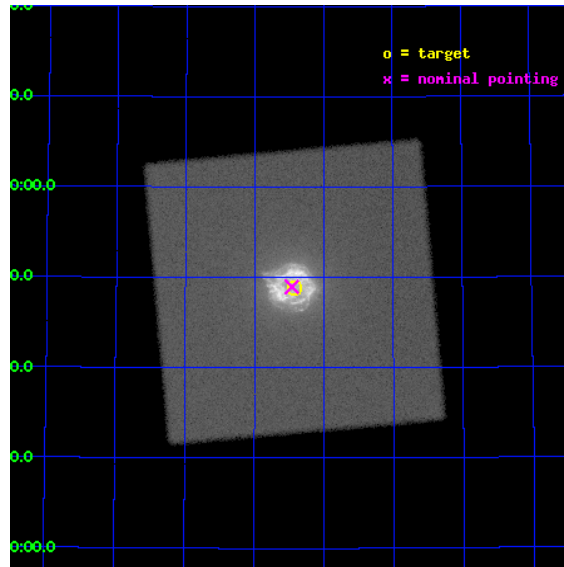
L2 Processing Date : Jun 27 2012

Contents

1	Front	2
2	OBI	3
2.1	OBI	3
2.1.1	Images	3
2.1.2	Parameters	4
2.1.3	Events	4
2.2	Compared Parameters	5
2.3	Aspect	6
2.4	Star Slots	9
2.4.1	Slot 3	9
2.4.2	Slot 4	10
2.4.3	Slot 5	11
2.4.4	Slot 6	12
2.4.5	Slot 7	13
2.5	FID Slots	14
2.5.1	Slot 0	14
2.5.2	Slot 1	15
2.5.3	Slot 2	16
A	Summary	17
A.1	Status	17
A.2	Comments	17

1 Front

seq_num	590498	Sequence number
obs_id	11955	Observation id
title	AO-11 Calibration Observations of Cas A	Proposal title
observer	Dr. CXC Calibration	Principal investigator
object	Cas A	Source name
ra_targ	350.8575	Observer's specified target RA [deg]
dec_targ	58.814833	Observer's specified target Dec [deg]
ra_nom	350.86531683156	Nominal RA [deg]
dec_nom	58.816141313702	Nominal Dec [deg]
roll_nom	39.897769872132	Nominal Roll [deg]
revision	2	Processing version of data
ontime	10115.46926409	[s]
liveltime	9144.9474924179	Ontime multiplied by DTCOR
l2events	1540600	Number of level 2 events

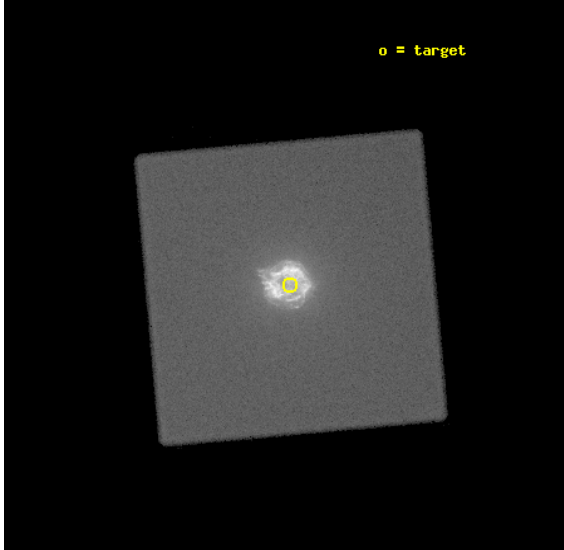


2 OBI

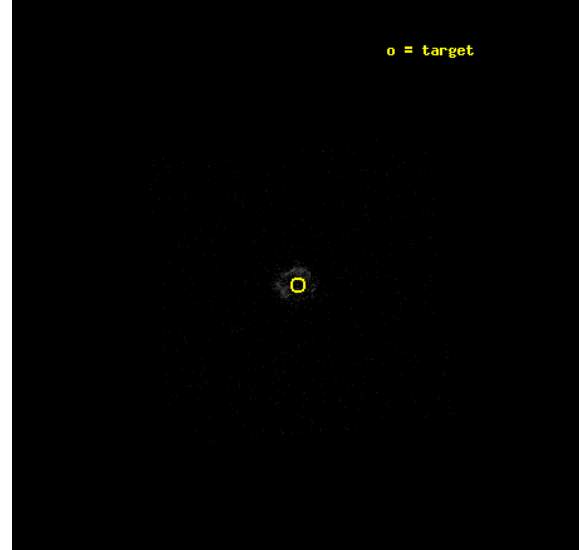
2.1 OBI

2.1.1 Images

Level 1 Image



Level 1 Bad Events



2.1.2 Parameters

obi_num	1	Obi number	sched_exp_time	10000.000000	[s] Scheduled observation exposure time
ascdsver	8.4.5	Processing system revision	ontime	10115.46926409	[s]
caldbver	4.5.0	 	l1events	2056912	Number of level 1 events
date	2012-06-27T18:35:53	Date and time of file creation			
revision	2	Processing version of data			

2.1.3 Events

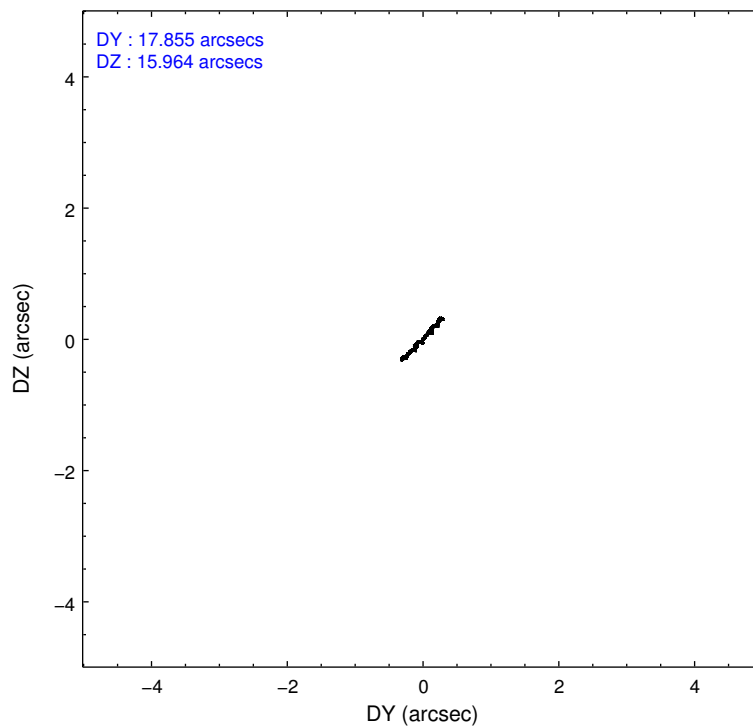
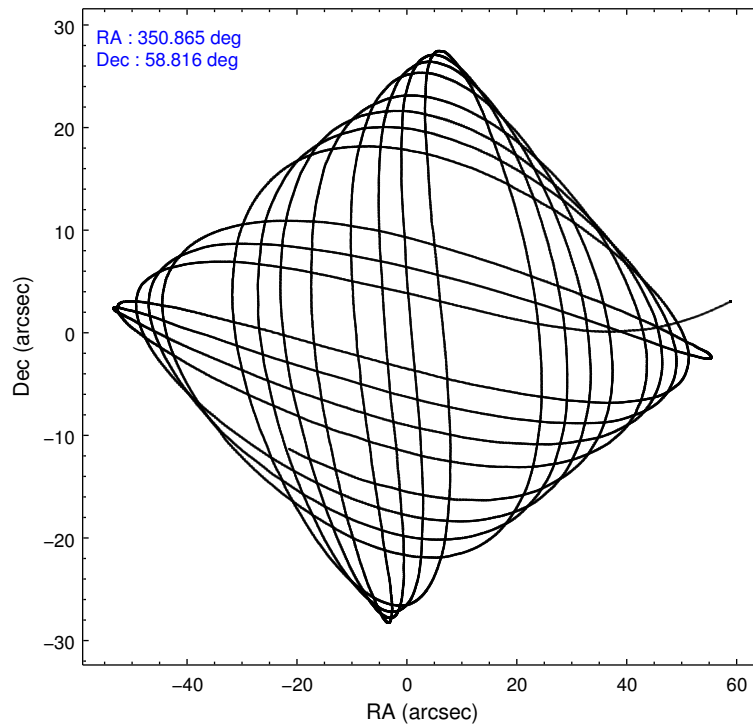
Level 1 Events

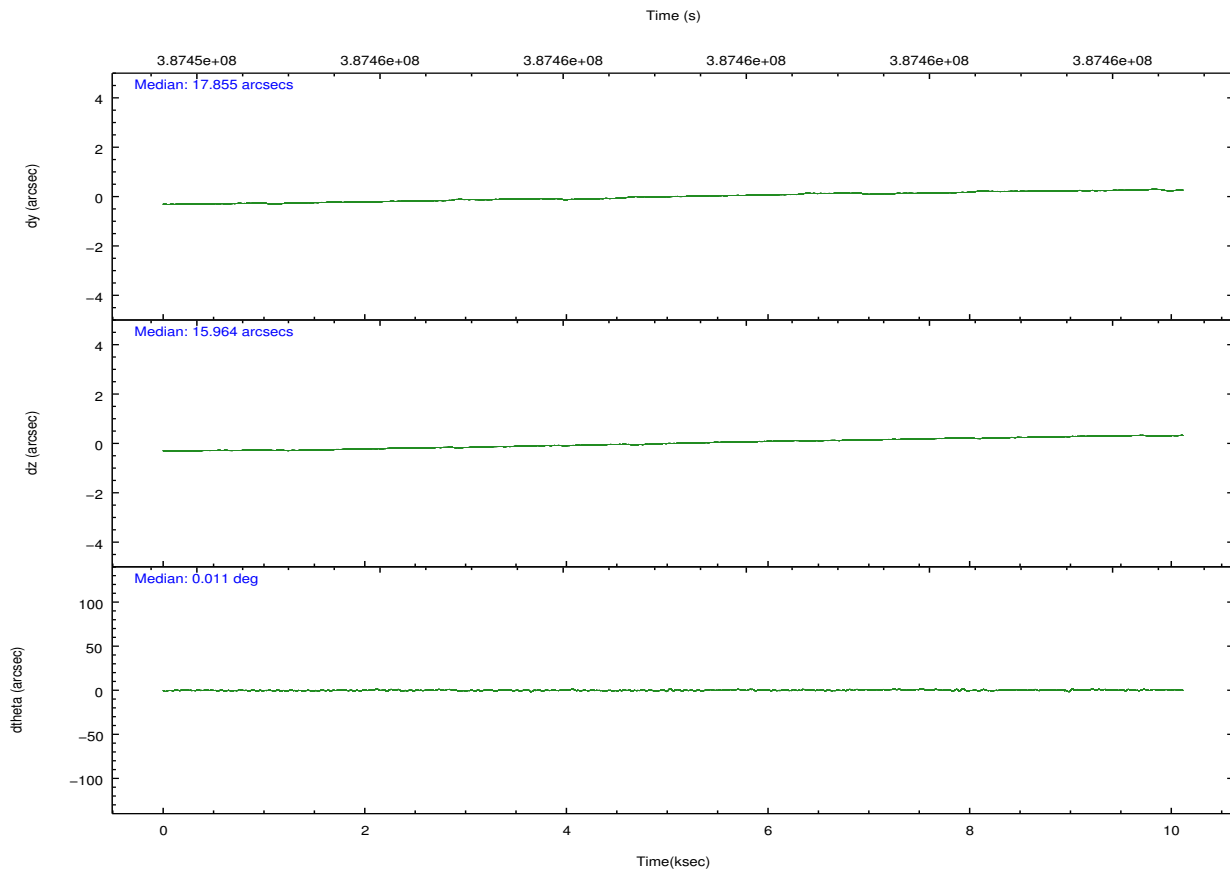
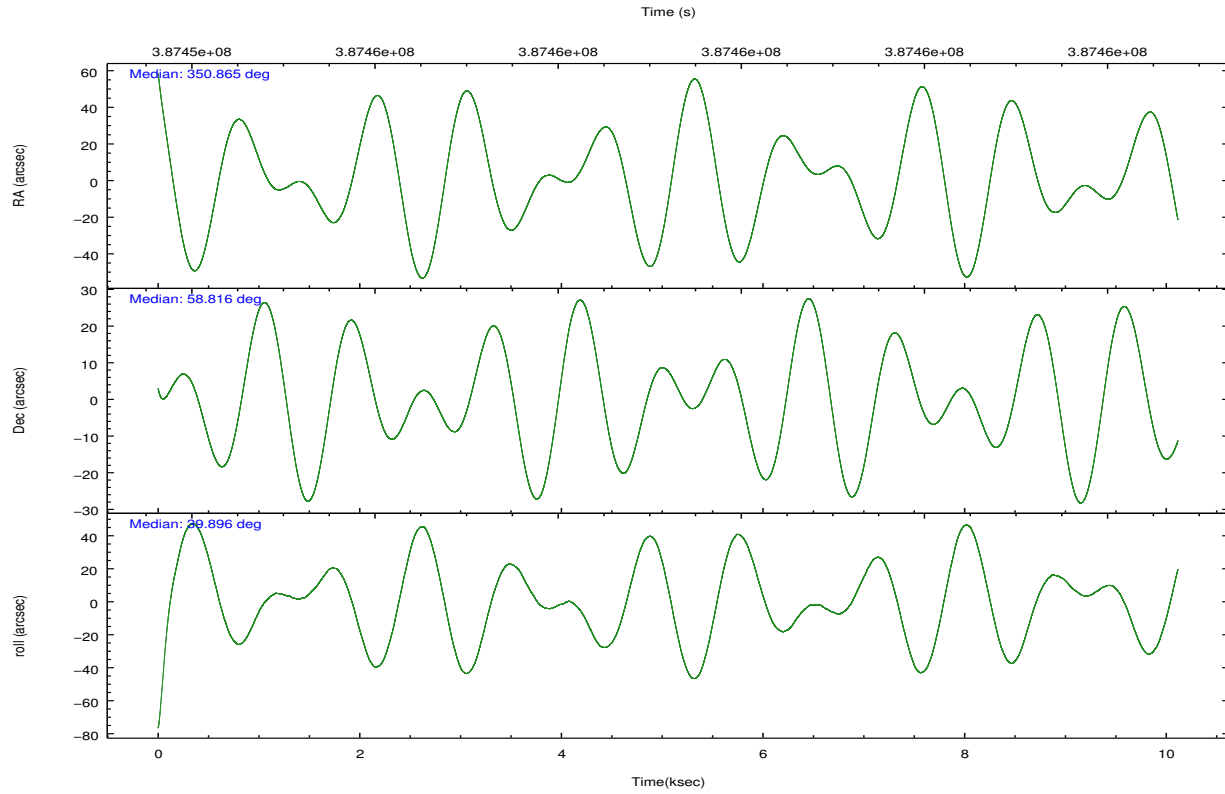
	segment 0
level 1 events	2056912
rejected events	191726
rejected %	9%

2.2 Compared Parameters

Parameter	Planned	Actual	Parameter	Planned	Actual
Instrument	HRC	HRC	Obspar format version number	7	7
Detector	HRC-I	HRC-I	Obspar file type	PREDICTED	ACTUAL
Grating	NONE	NONE	Obspar update status	NONE	UPDATED
Data mode	OBSERVING	OBSERVING			
Observation mode	POINTING	POINTING			
[deg] Pointing RA	350.848351	350.8653168315592			
[deg] Pointing Dec	58.790406	58.81614131370244			
[deg] Pointing Roll	40.007824	39.89776987213157			
[mm] SIM focus pos	-1.040293	-1.038866356238299			
[mm] SIM defocus	0	0.001426264420575141			
[mm] SIM translation stage pos	126.985494	126.9829799899862			
[mm] SIM translation stage offset	0	0.002508901615314585			
[s] Observation start time (MET)	387454260.184000	387452589.06837			
Observation start date	2010-04-12T10:09:54	2010-04-12T09:43:09			
[s] Observation end time (MET)	387464260.184000	387465677.80654			
Observation end date	2010-04-12T12:56:34	2010-04-12T13:21:17			

2.3 Aspect



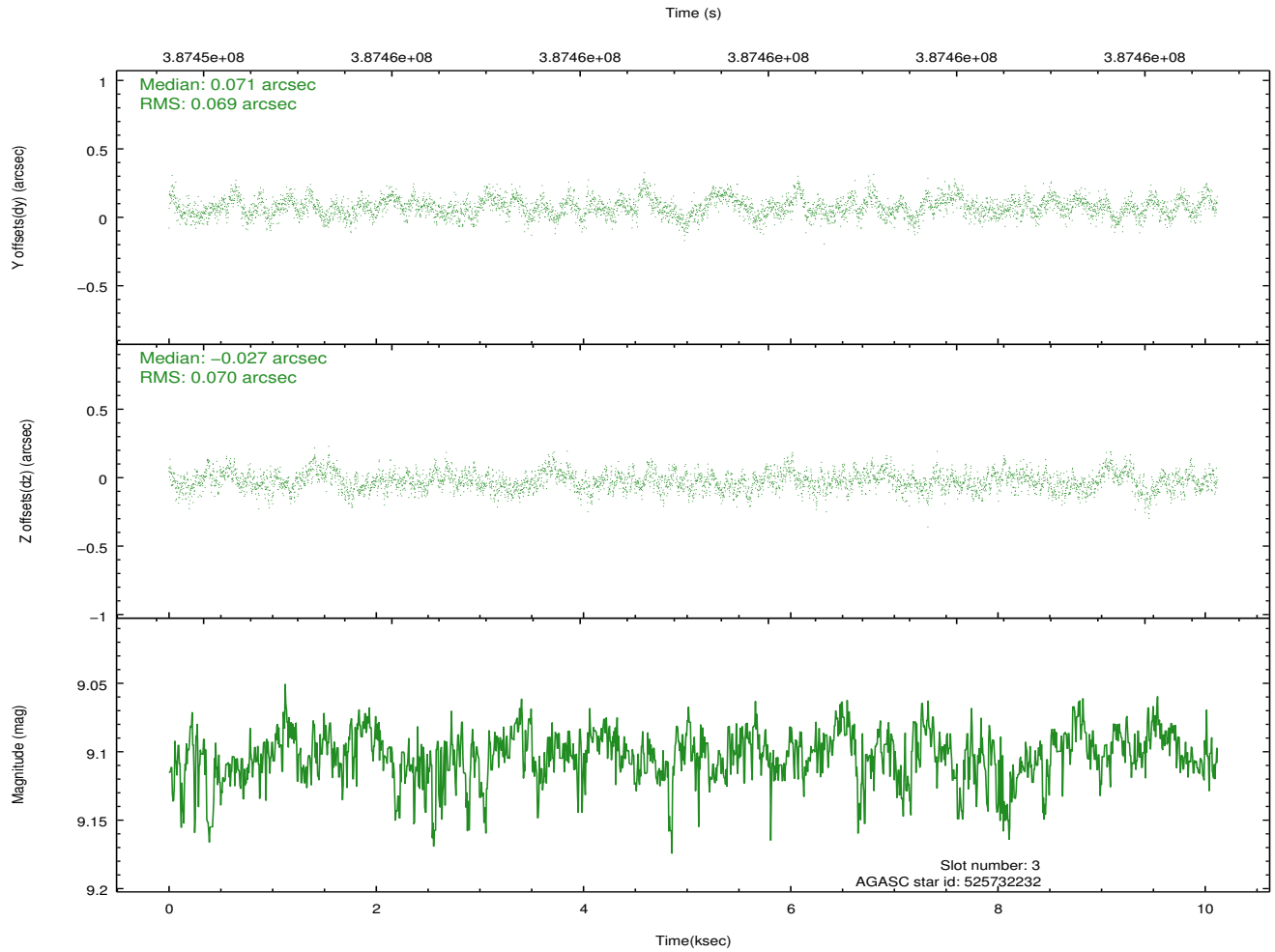
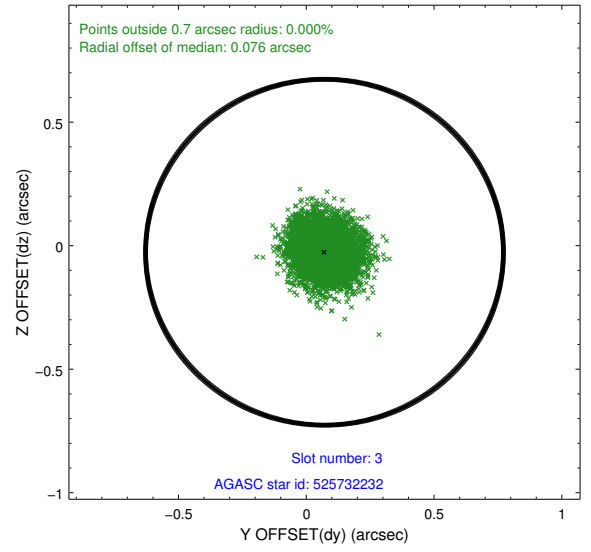
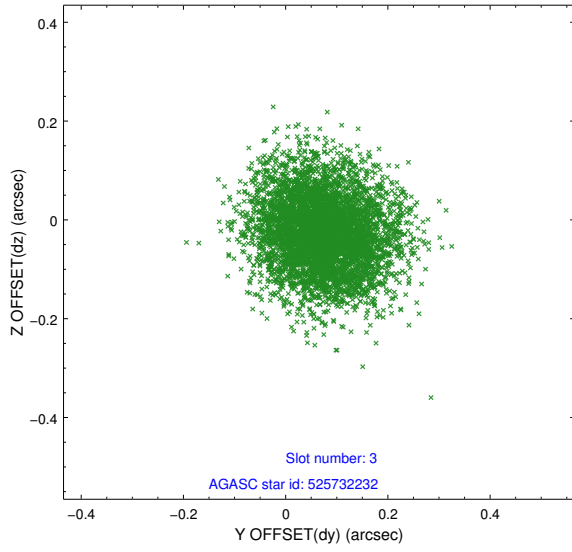


Slot Statistics

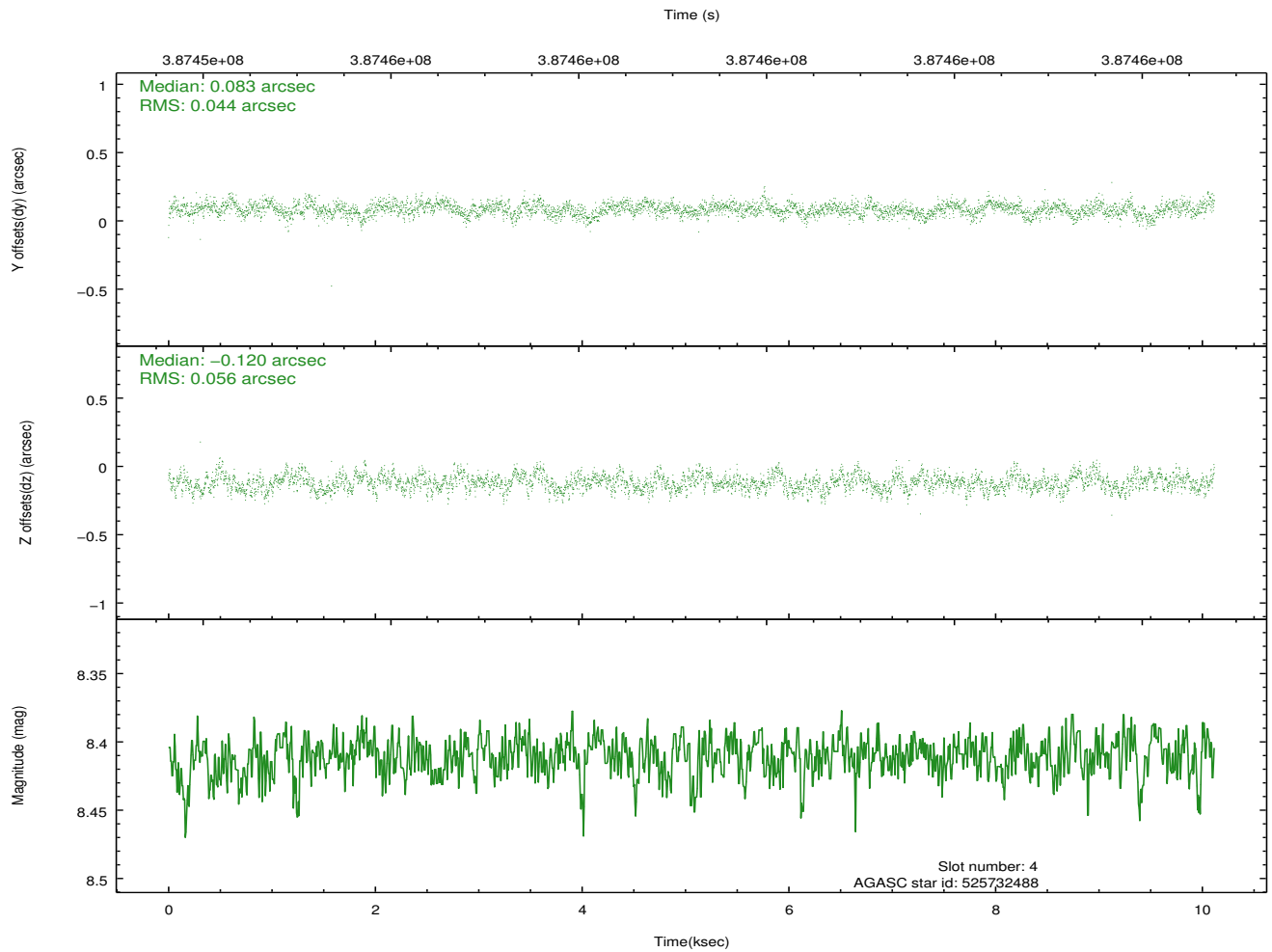
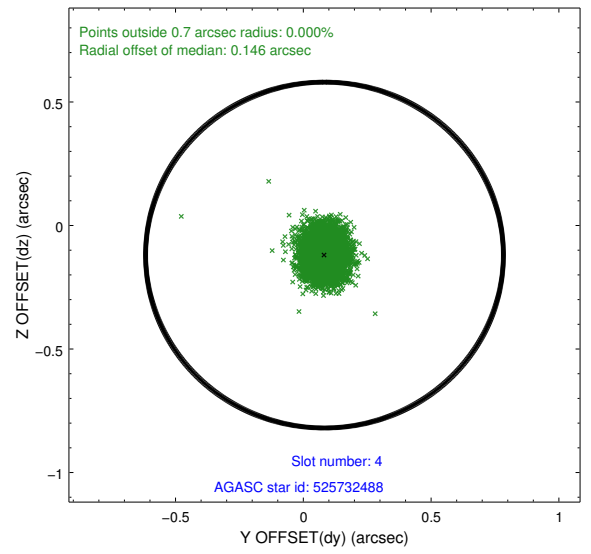
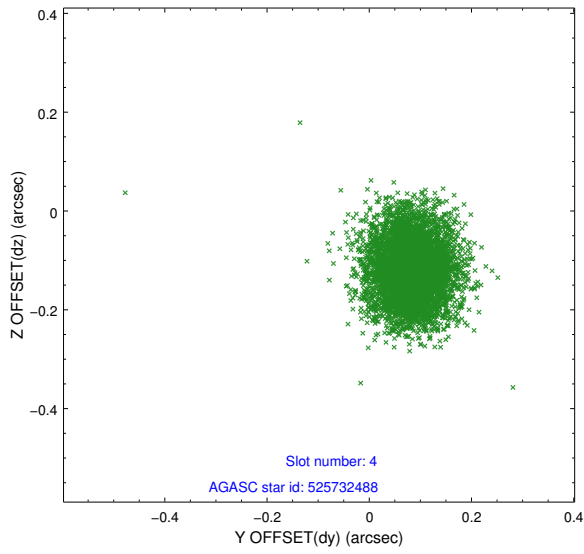
slot	status	id	mag	n_pts	med_dy	med_dz	dr1	dr2	ra	dec	mean_y	mean_z
0	FID	HRC-I-1	6.95	2467	-0.005	-0.032	0.011	0.018	0.000000	0.000000	-773.79	-1304.07
1	FID	HRC-I-3	7.03	2467	-0.092	-0.066	0.013	0.022	0.000000	0.000000	-1202.57	999.95
2	FID	HRC-I-4	6.96	2468	0.209	0.009	0.010	0.017	0.000000	0.000000	1268.83	998.45
3	GUIDE	525732232	9.10	4933	0.071	-0.027	0.105	0.169	351.669550	58.757012	1103.72	-1071.93
4	GUIDE	525732488	8.41	4935	0.083	-0.120	0.076	0.124	350.087090	58.516915	-1723.39	172.15
5	GUIDE	525732528	9.36	4895	-0.072	0.062	0.113	0.183	351.607241	59.298932	2250.14	512.12
6	GUIDE	525735456	6.79	4936	-0.219	-0.215	0.067	0.104	350.628183	59.307249	886.98	1686.14
7	GUIDE	525735976	8.81	4934	0.135	0.301	0.080	0.132	350.142956	58.277622	-2204.62	-549.22

2.4 Star Slots

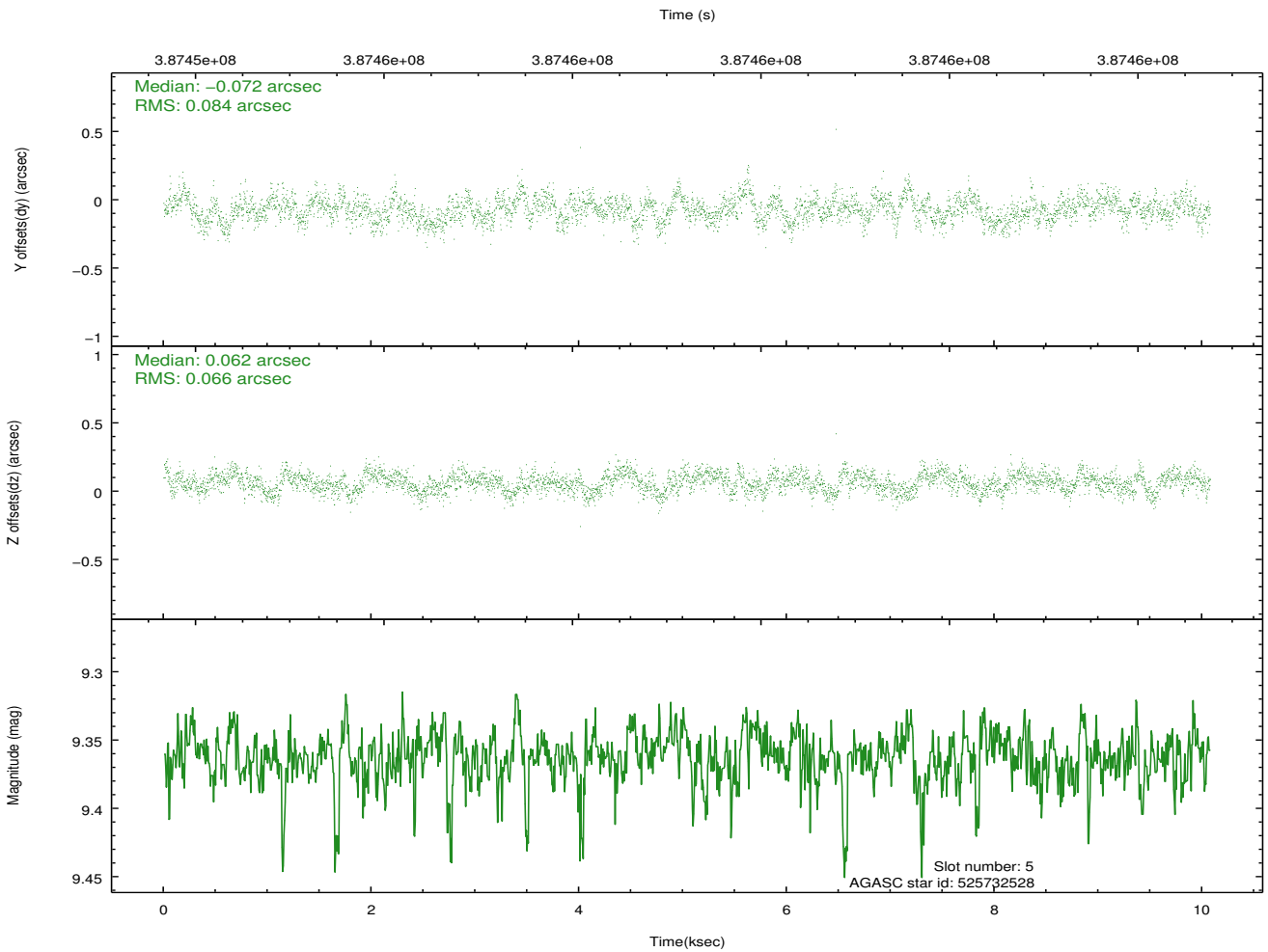
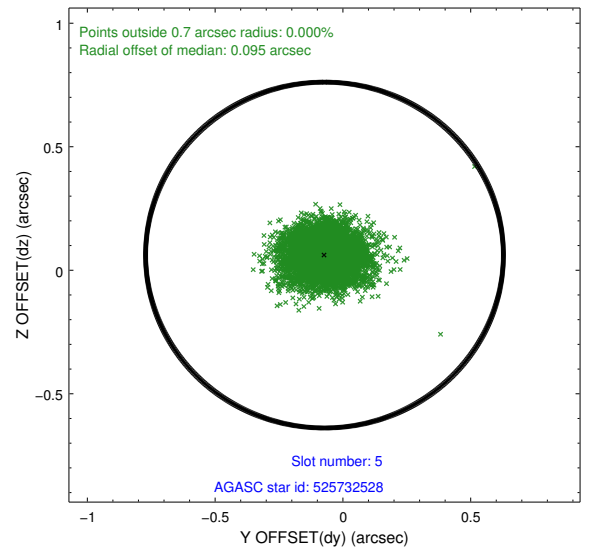
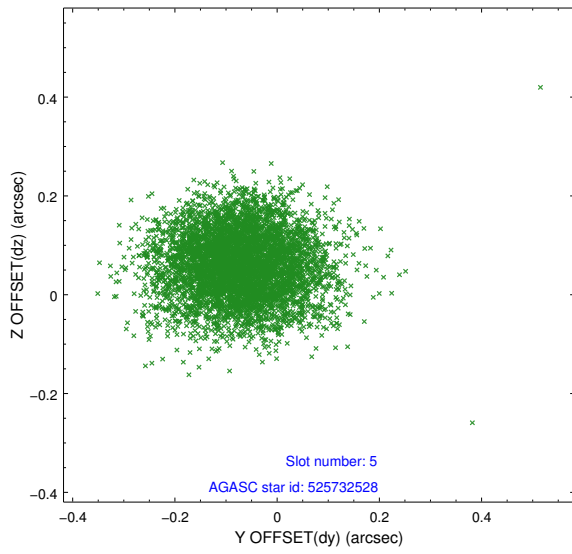
2.4.1 Slot 3



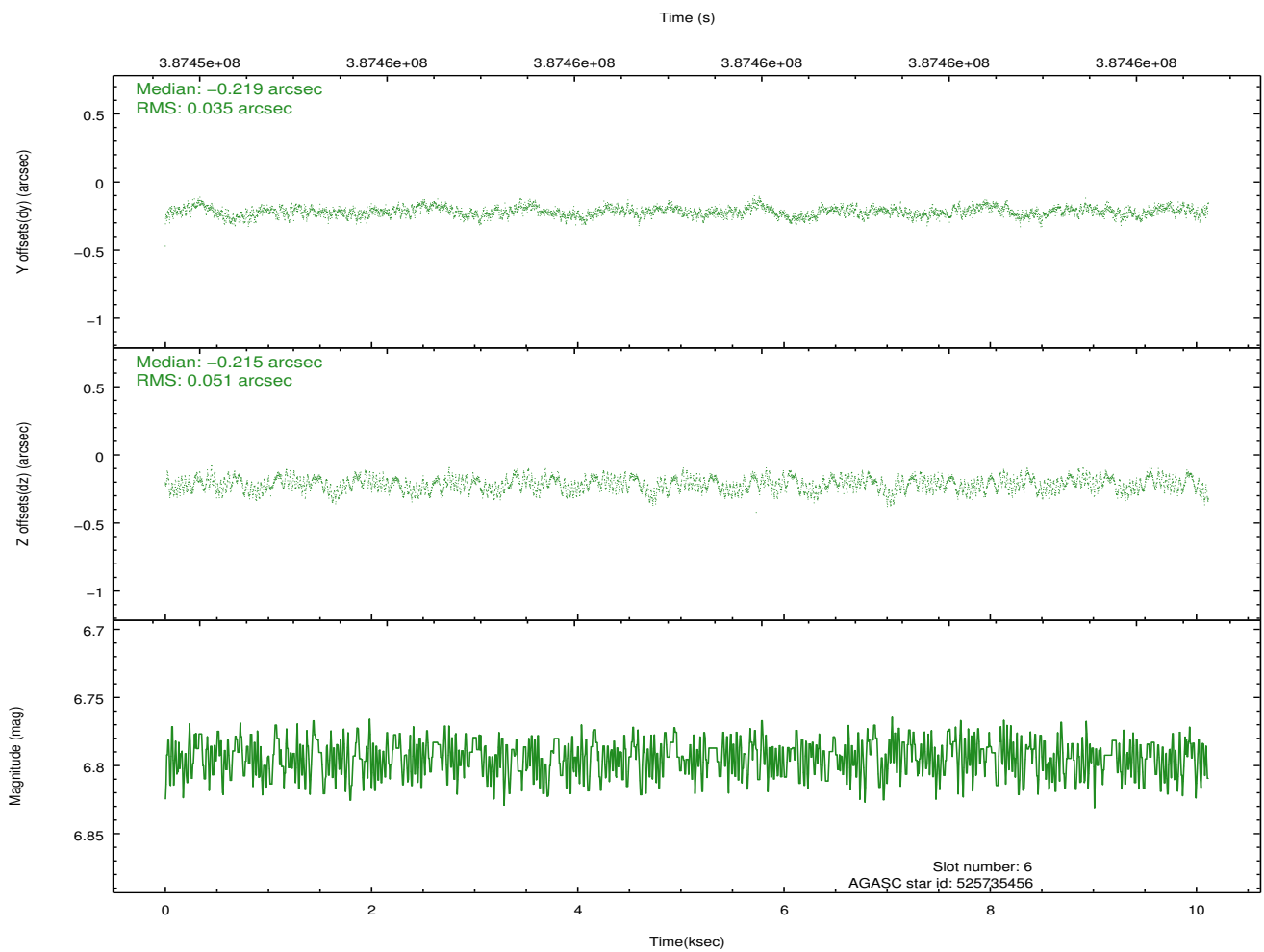
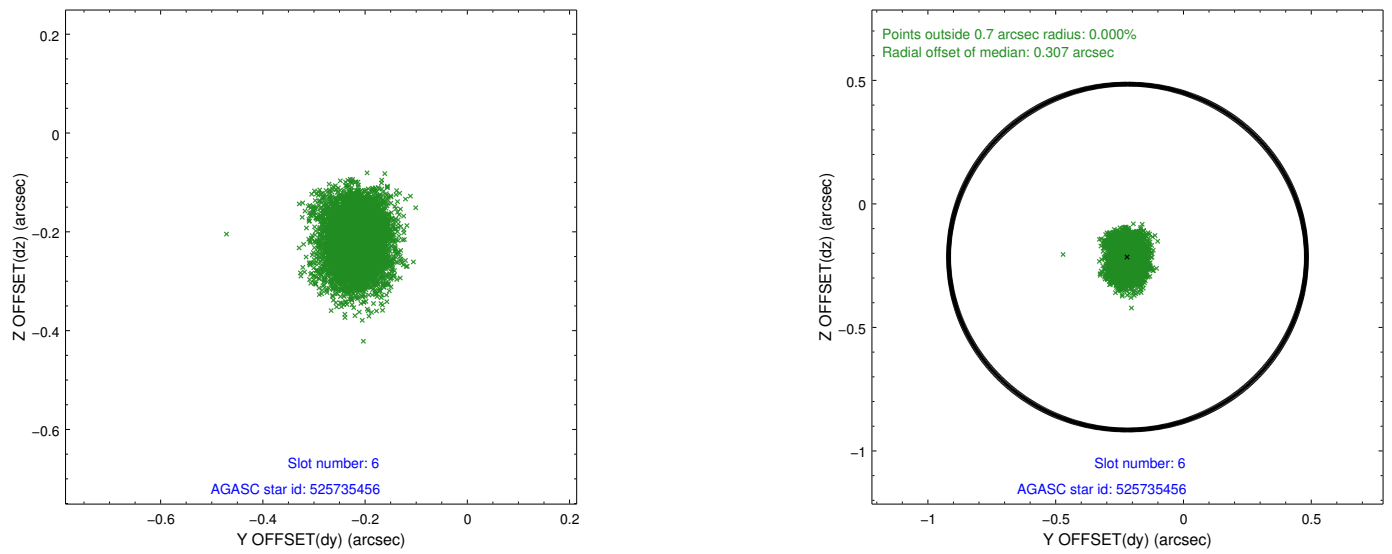
2.4.2 Slot 4



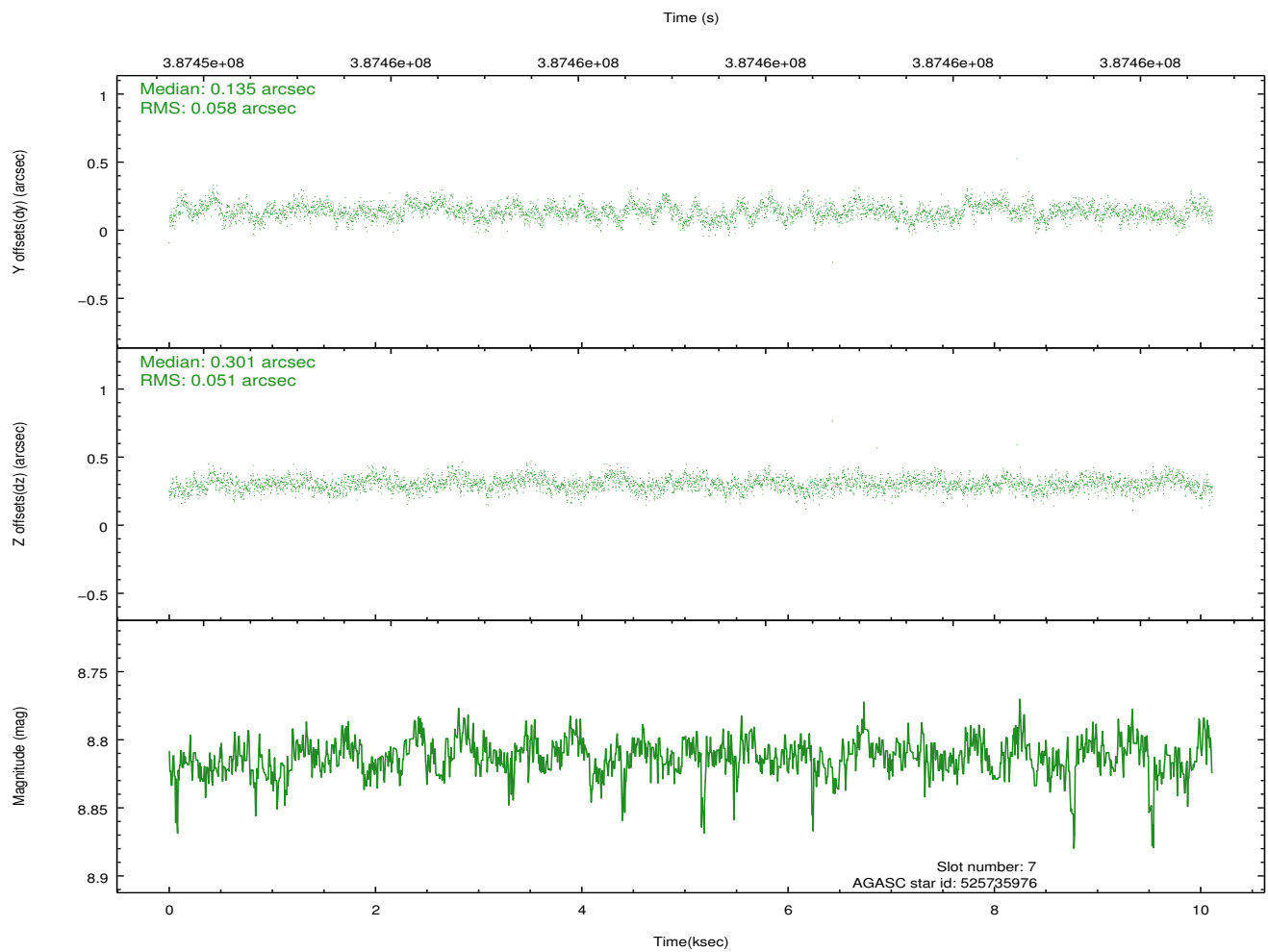
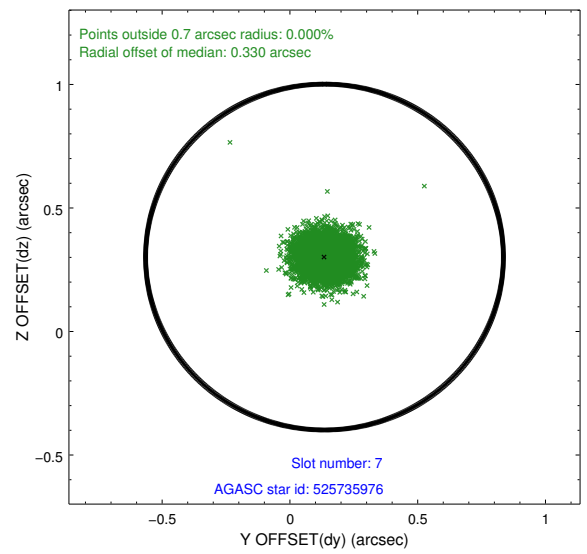
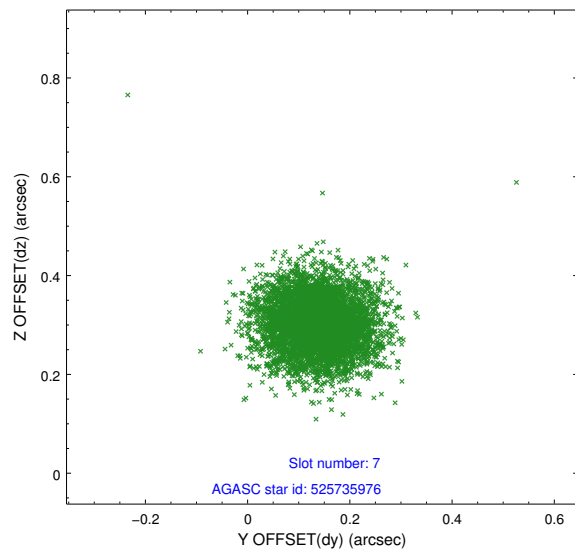
2.4.3 Slot 5



2.4.4 Slot 6

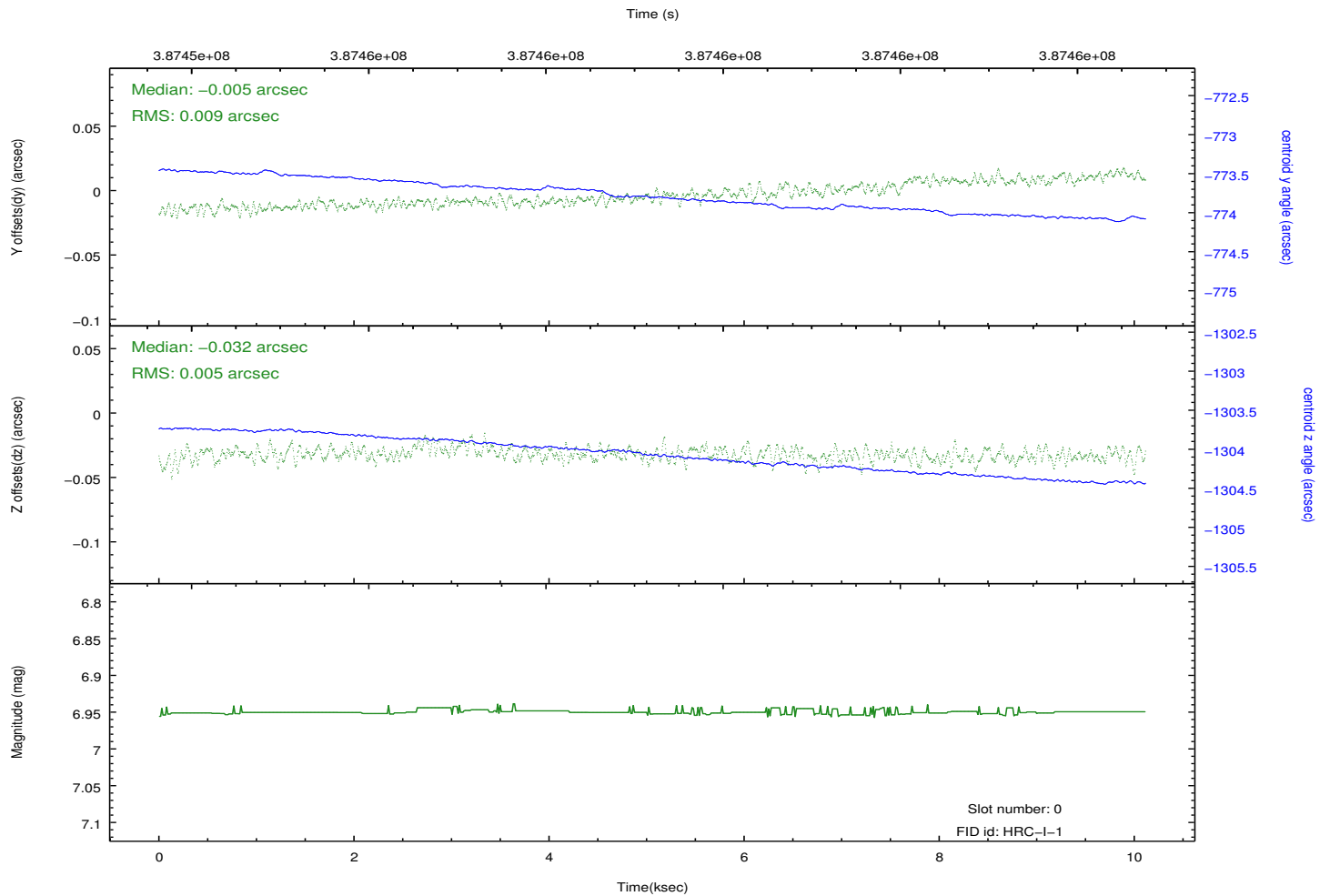
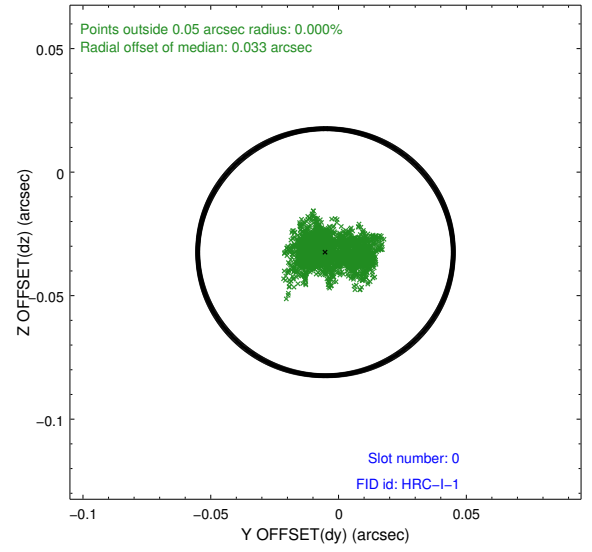
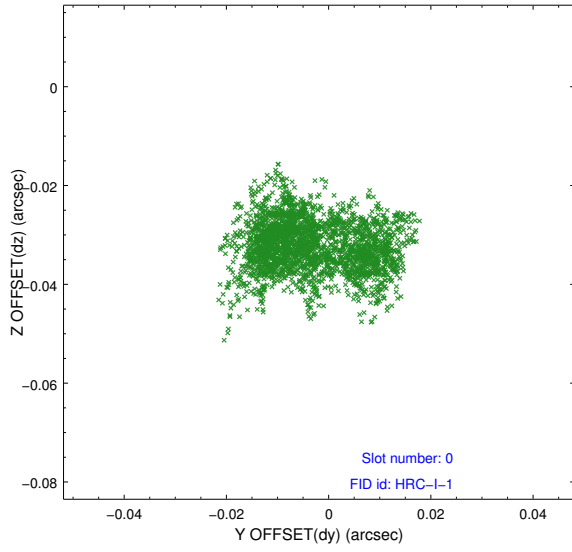


2.4.5 Slot 7

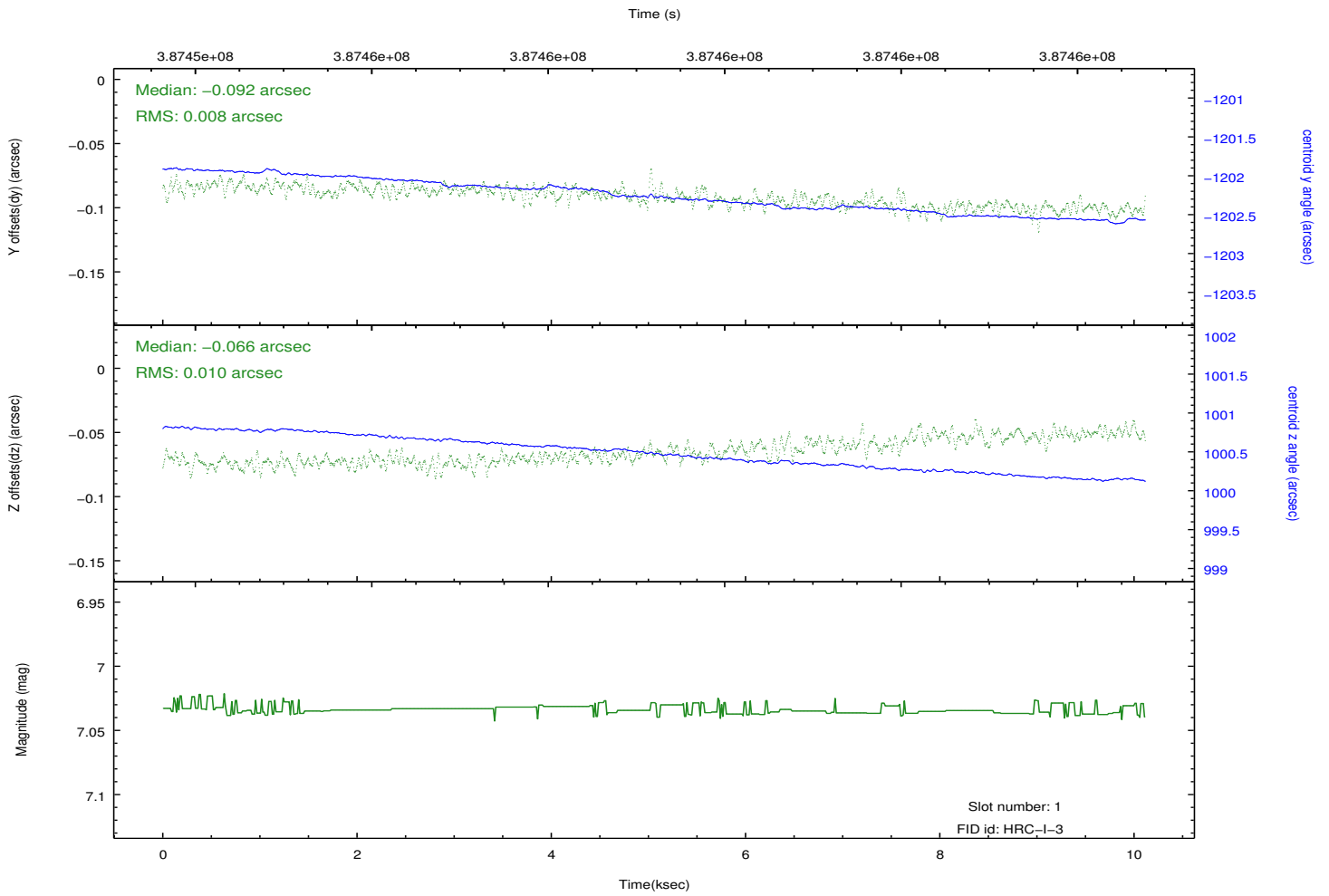
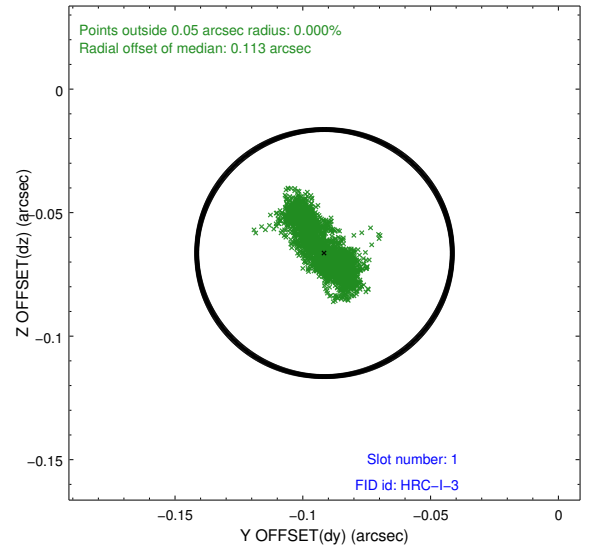
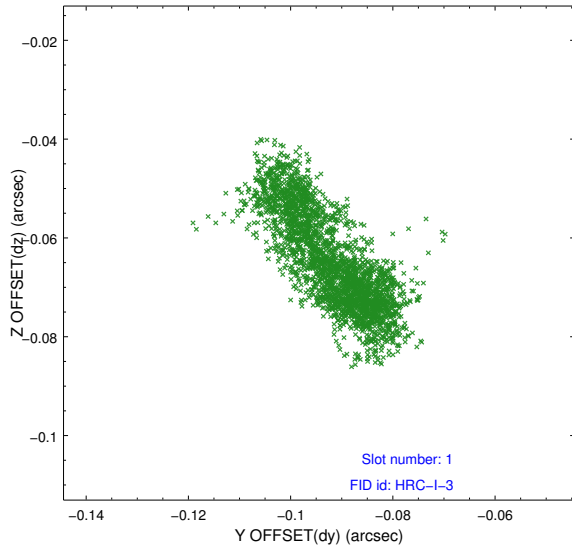


2.5 FID Slots

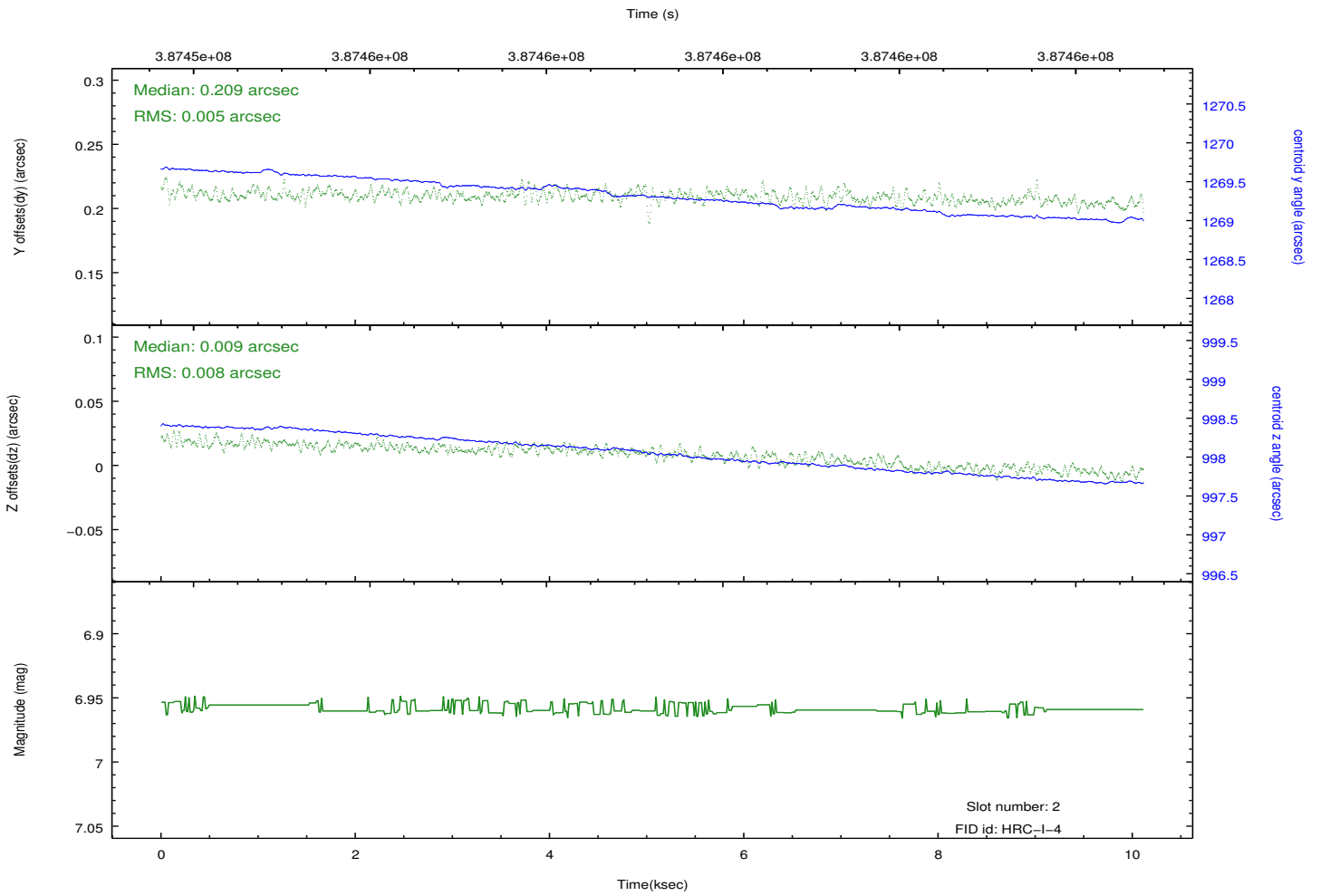
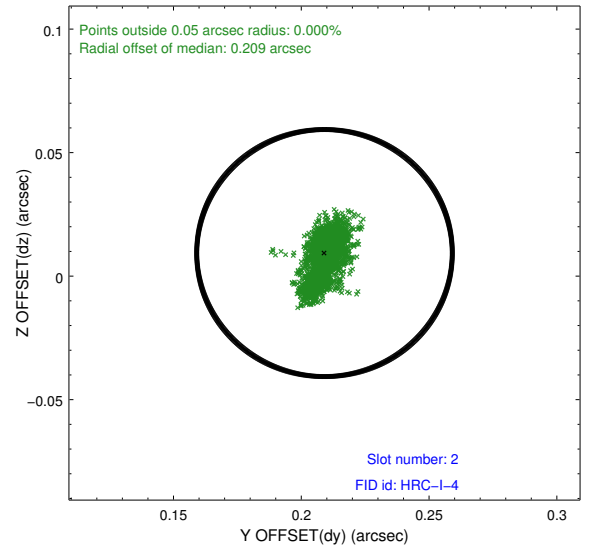
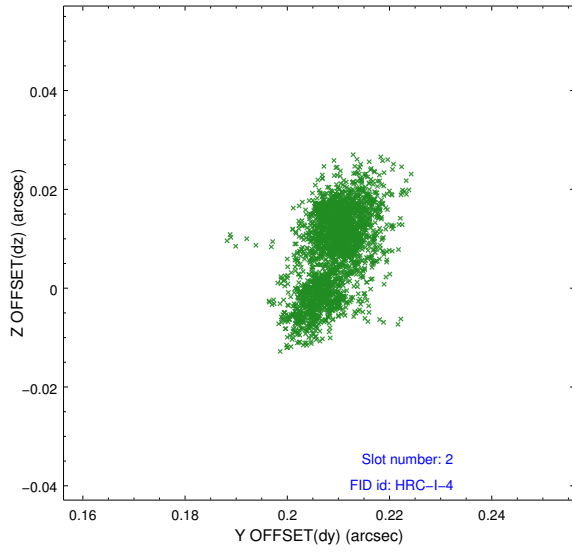
2.5.1 Slot 0



2.5.2 Slot 1



2.5.3 Slot 2



A Summary

A.1 Status

V&V Scientist	Beth Sundheim
V&V Date (YYYY-MM-DD)	2012.07.03
V&V Edition	1
V&V Disposition and Status	OK
V&V Charge Time	10.115725514114

A.2 Comments