

# V&V Reference Report

## L2 ASCDS Version : 8.4.5

Observation 11975 - L2 Version 2  
Chandra X-Ray Center

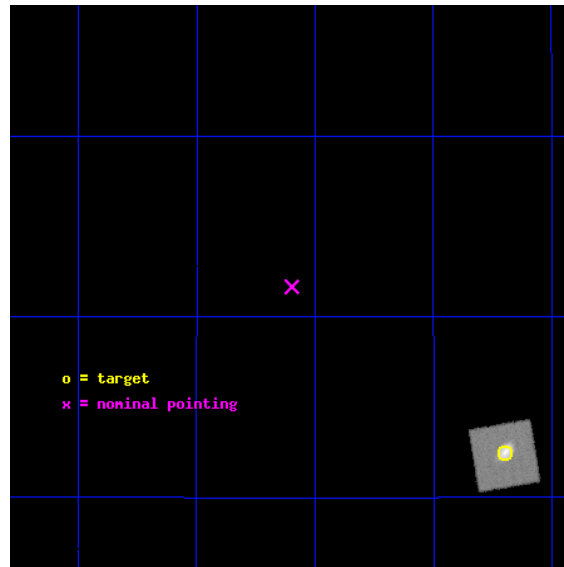
L2 Processing Date : Jun 27 2012

## Contents

<b>1</b>	<b>Front</b>	<b>2</b>
<b>2</b>	<b>OBI</b>	<b>3</b>
2.1	OBI . . . . .	3
2.1.1	Images . . . . .	3
2.1.2	Parameters . . . . .	4
2.1.3	Events . . . . .	4
2.2	Compared Parameters . . . . .	5
2.3	Aspect . . . . .	6
2.4	Star Slots . . . . .	9
2.4.1	Slot 3 . . . . .	9
2.4.2	Slot 4 . . . . .	10
2.4.3	Slot 5 . . . . .	11
2.4.4	Slot 6 . . . . .	12
2.4.5	Slot 7 . . . . .	13
2.5	FID Slots . . . . .	14
2.5.1	Slot 0 . . . . .	14
2.5.2	Slot 1 . . . . .	15
<b>A</b>	<b>Summary</b>	<b>16</b>
A.1	Status . . . . .	16
A.2	Comments . . . . .	16

# 1 Front

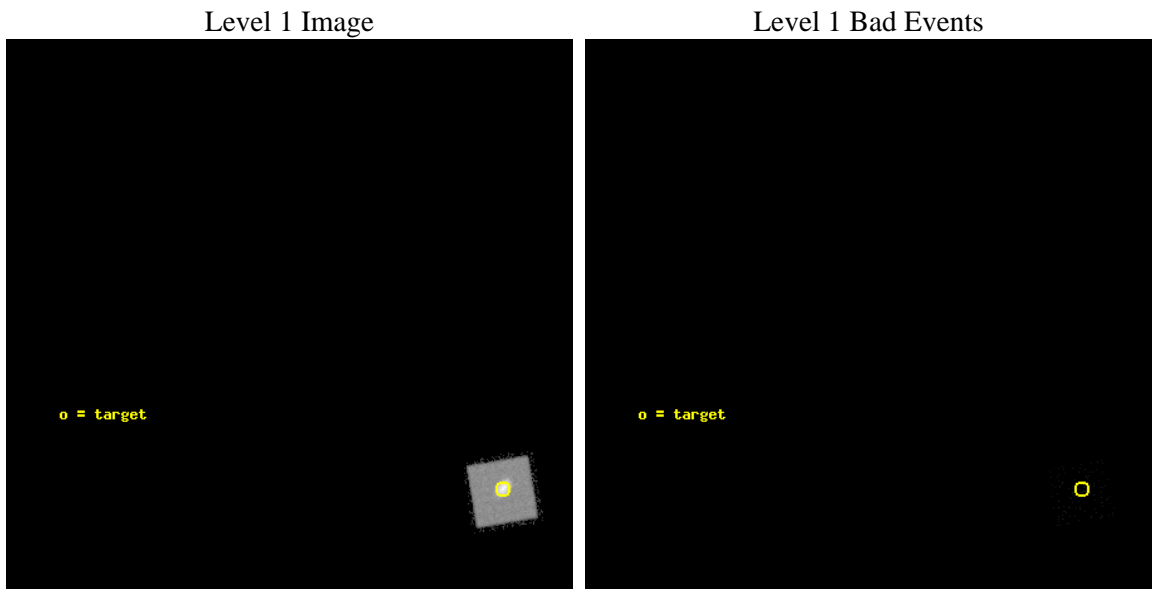
seq_num	990015	Sequence number
obs_id	11975	Observation id
title	AO-11 Calibration Observations of the ACIS charged particle background	Proposal title
observer	Dr. CXC Calibration	Principal investigator
object	31 Com	Source name
ra_targ	192.924583	Observer's specified target RA [deg]
dec_targ	27.540722	Observer's specified target Dec [deg]
ra_nom	193.14944907142	Nominal RA [deg]
dec_nom	27.69453697205	Nominal Dec [deg]
roll_nom	125.56346758337	Nominal Roll [deg]
revision	2	Processing version of data
ontime	46070.677330613	[s]
livetime	40327.58878884	Ontime multiplied by DTCOR
l2events	86186	Number of level 2 events



## 2 OBI

### 2.1 OBI

#### 2.1.1 Images



### 2.1.2 Parameters

obi_num	0	Obi number	sched_exp_time	46000.000000	[s] Scheduled observation exposure time
ascdsver	8.4.5	Processing system revision	ontime	46136.277340591	[s]
caldsver	4.5.0	&#160	l1events	104419	Number of level 1 events
date	2012-06-27T17:55:26	Date and time of file creation			
revision	2	Processing version of data			

### 2.1.3 Events

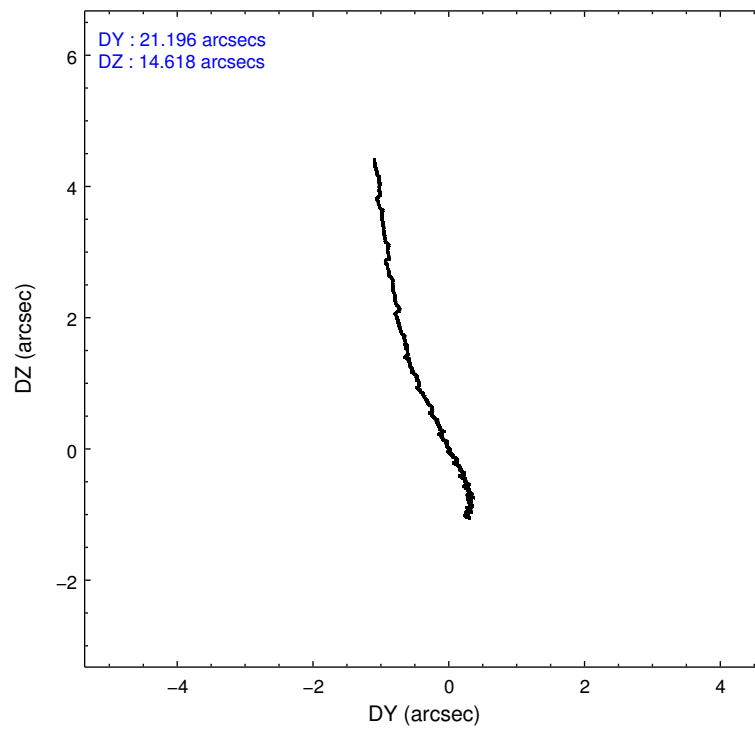
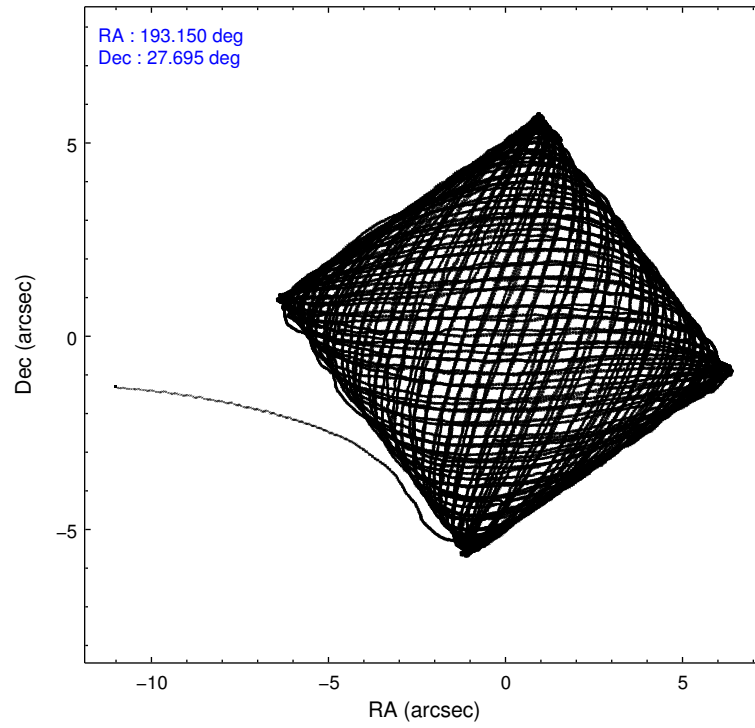
#### Level 1 Events

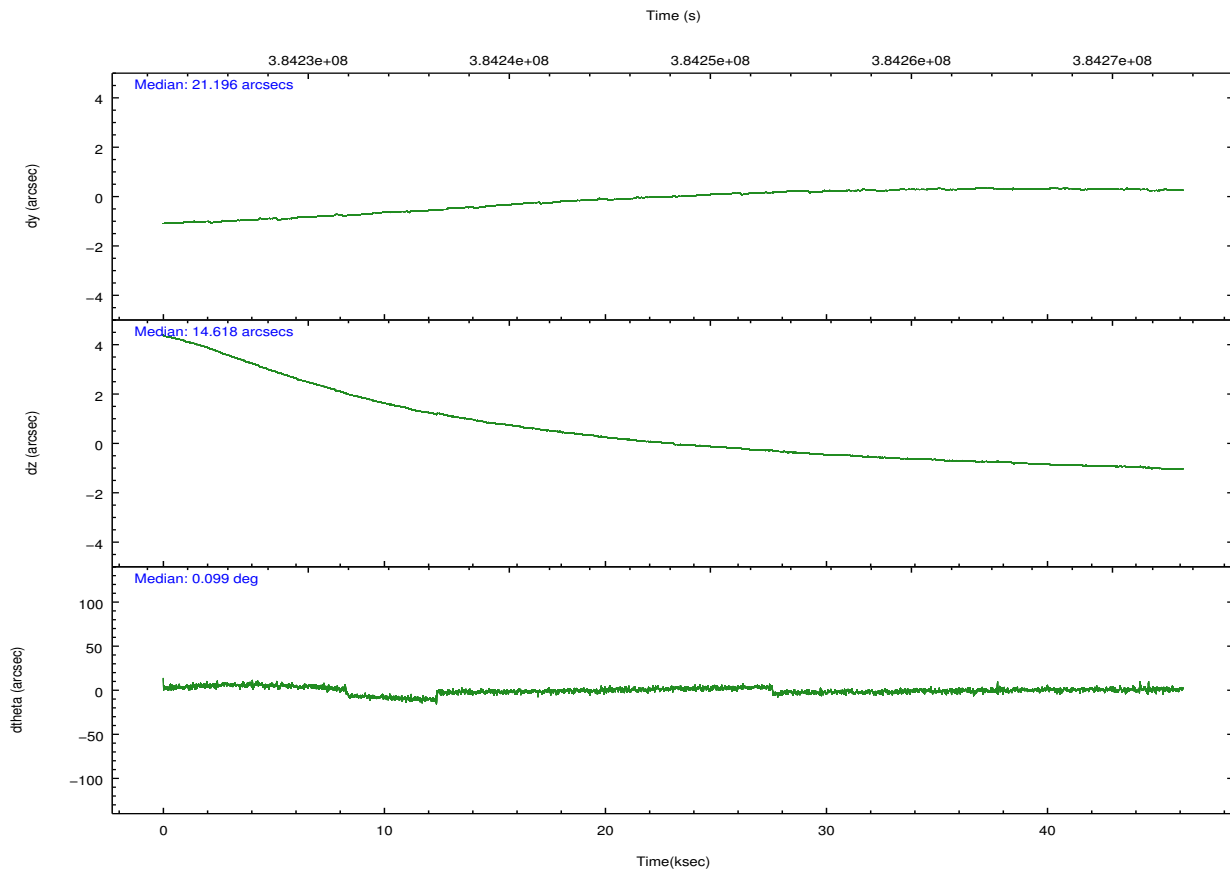
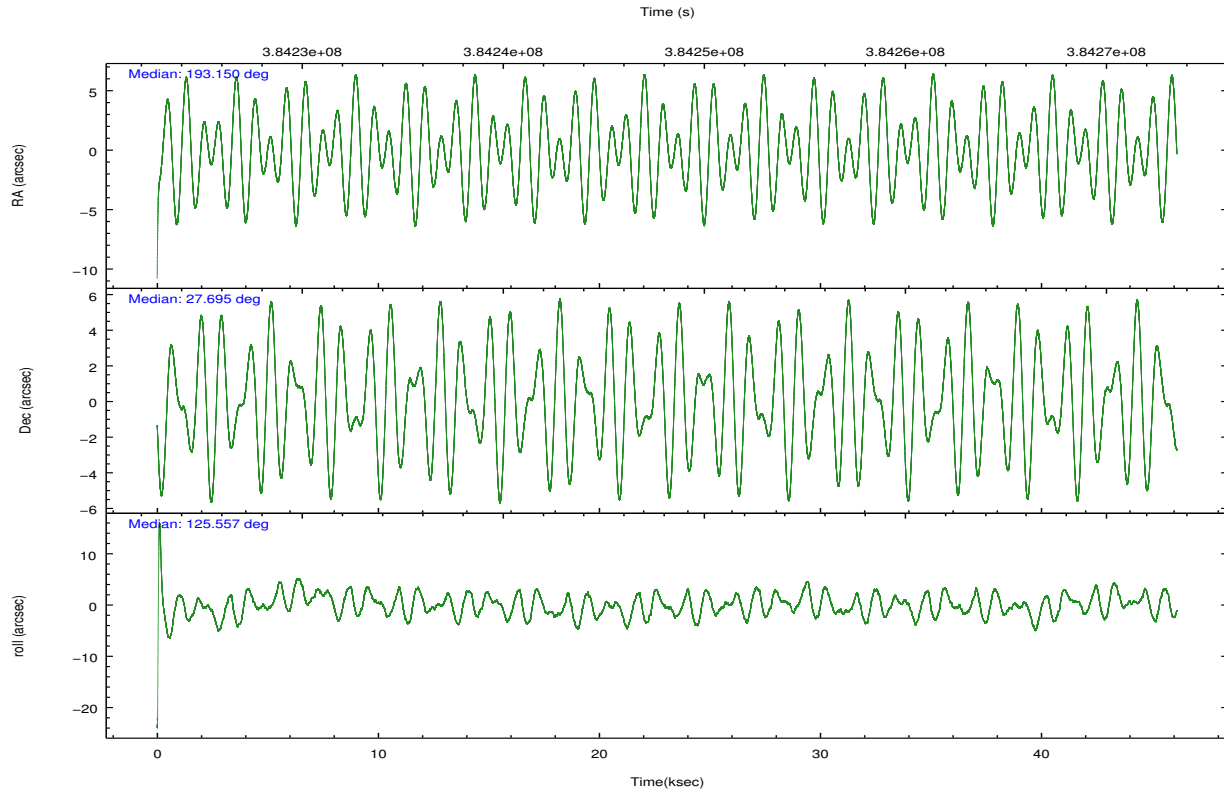
	<b>segment 0</b>
level 1 events	104419
rejected events	2302
rejected %	2%

## 2.2 Compared Parameters

Parameter	Planned	Actual	Parameter	Planned	Actual
Instrument	HRC	HRC	Obspar format version number	7	7
Detector	HRC-I	HRC-I	Obspar file type	PREDICTED	ACTUAL
Grating	NONE	NONE	Obspar update status	OVERRIDE	OVERRIDE
Data mode	NEXT_IN_LINE	NEXT_IN_LINE			
Observation mode	POINTING	POINTING			
[deg] Pointing RA	193.177705	193.1494490714177			
[deg] Pointing Dec	27.683859	27.69453697204996			
[deg] Pointing Roll	125.645843	125.5634675833695			
[s] Window start time (MET)	383788866.184000	383788866.184000			
[s] Window stop time (MET)	386380866.184000	386380866.184000			
[mm] SIM focus pos	-1.0388663562	-1.0388663562			
[mm] SIM defocus	0.00142623215544524	0.00142623215544524			
[mm] SIM translation stage pos	51.9960404363	51.9960404363			
[mm] SIM translation stage offset	74.98945386898779	74.98945386898779			
[s] Observation start time (MET)	384224037.24193	384224037.24193			
Observation start date	2010-03-06T01:12:29	2010-03-06T00:53:57			
[s] Observation end time (MET)	384271844.78185	384271844.78185			
Observation end date	2010-03-06T13:59:09	2010-03-06T14:10:44			

## 2.3 Aspect



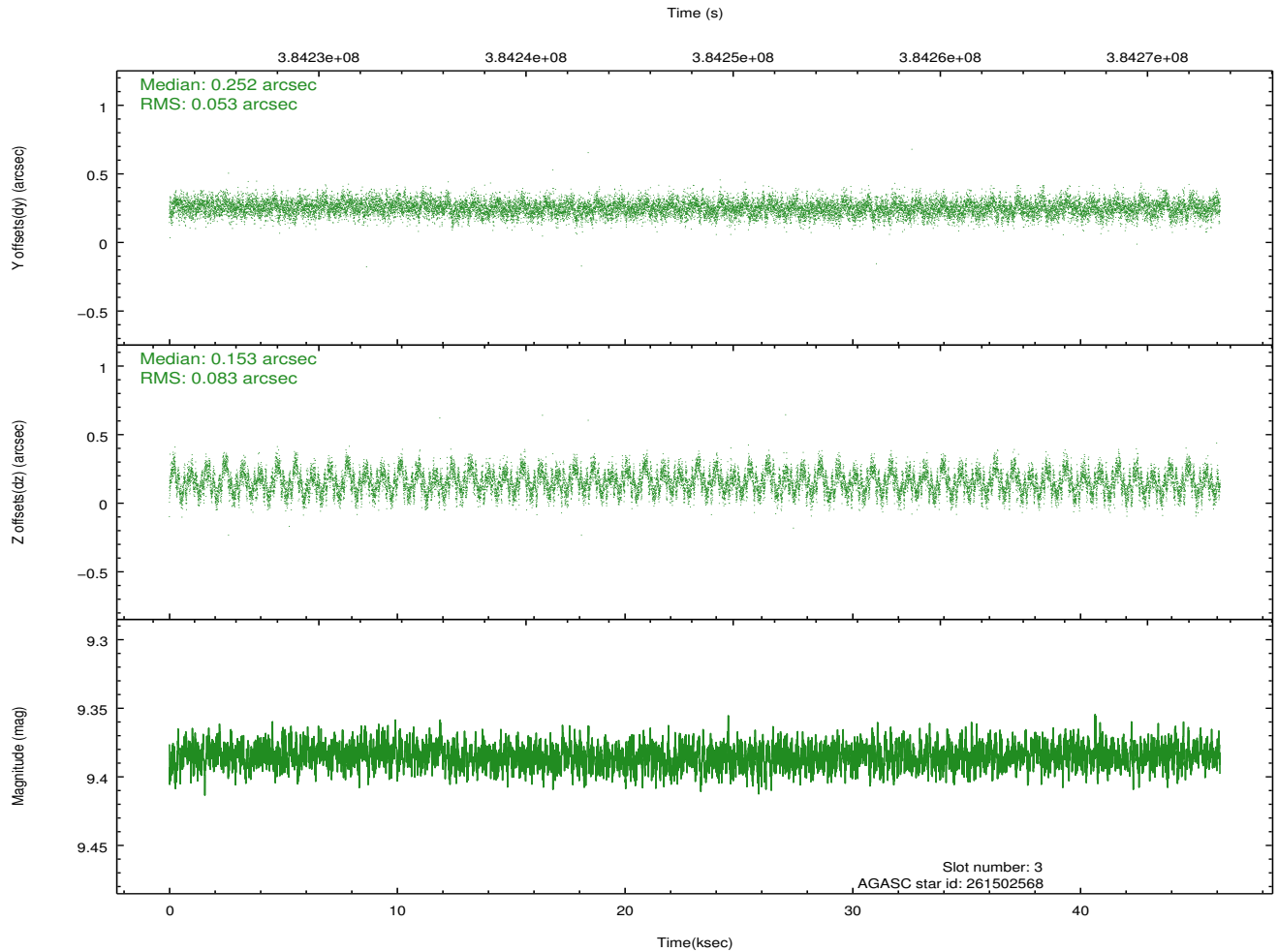
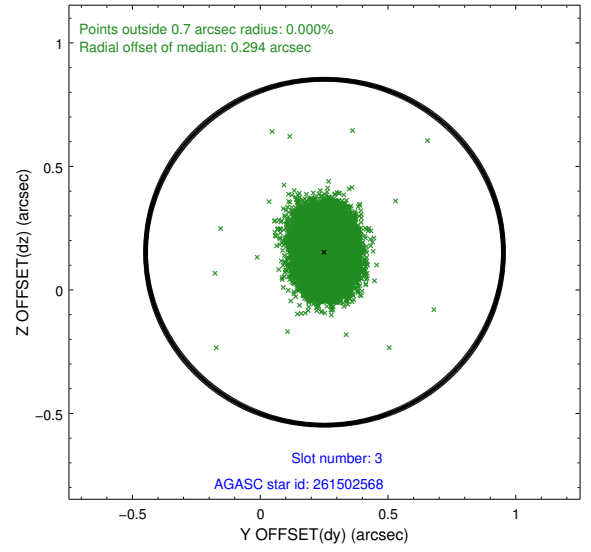
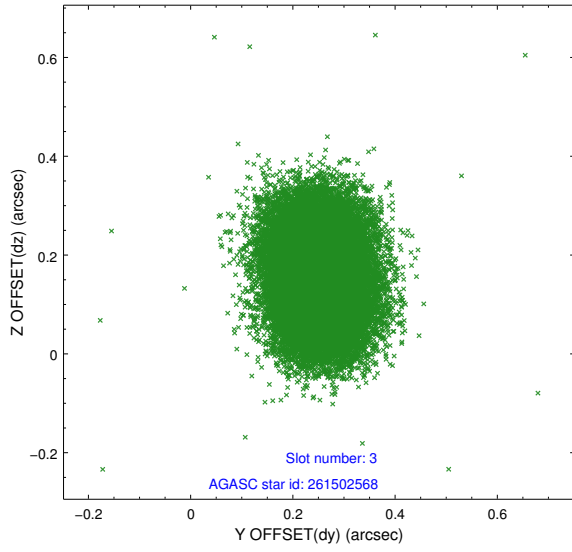


### Slot Statistics

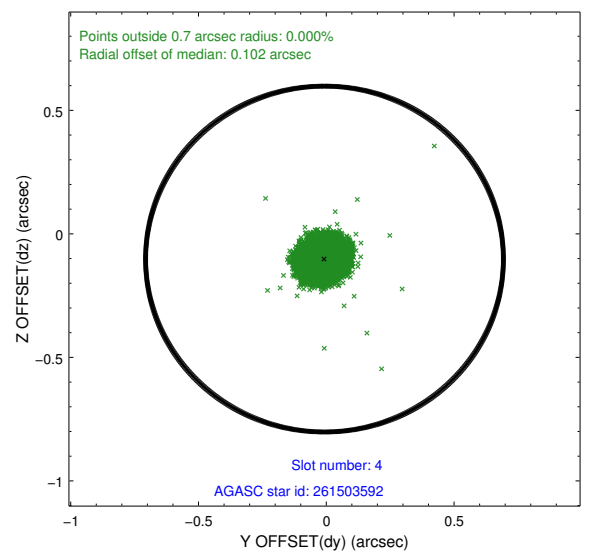
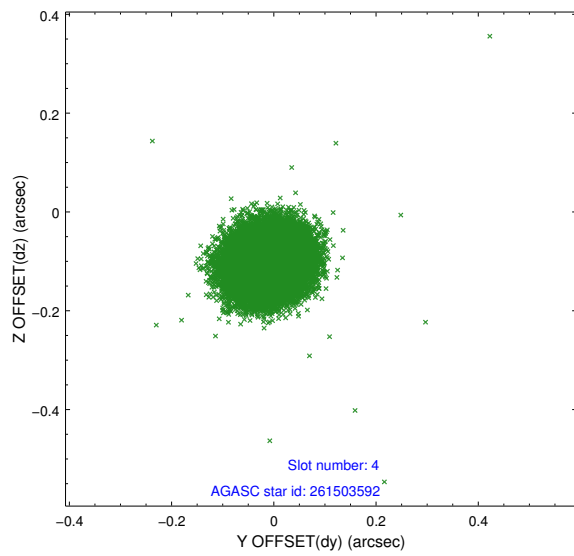
slot	status	id	mag	n_pts	med_dy	med_dz	dr1	dr2	ra	dec	mean_y	mean_z
0	FID	HRC-I-1	6.93	11253	-0.706	-0.029	0.007	0.017	0.000000	0.000000	-775.77	234.61
1	FID	HRC-I-2	7.06	11252	0.785	-0.025	0.007	0.017	0.000000	0.000000	835.20	235.67
2	UNUSED		0.00	0	0.000	0.000	0.000	0.000	0.000000	0.000000	0.00	0.00
3	GUIDE	261502568	9.39	22479	0.252	0.153	0.106	0.167	193.527777	27.676053	-671.22	-891.13
4	GUIDE	261503592	7.86	22503	-0.007	-0.102	0.057	0.091	193.784432	27.766358	-881.12	-1745.86
5	GUIDE	261505808	9.38	22484	-0.033	0.150	0.099	0.160	193.710324	27.913269	-312.78	-1859.99
6	GUIDE	261507256	8.34	22499	-0.170	-0.069	0.092	0.140	193.022402	28.129301	1590.78	-533.82
7	GUIDE	261507448	9.54	22465	-0.040	-0.126	0.154	0.235	192.816574	27.341077	-327.99	1656.78

## 2.4 Star Slots

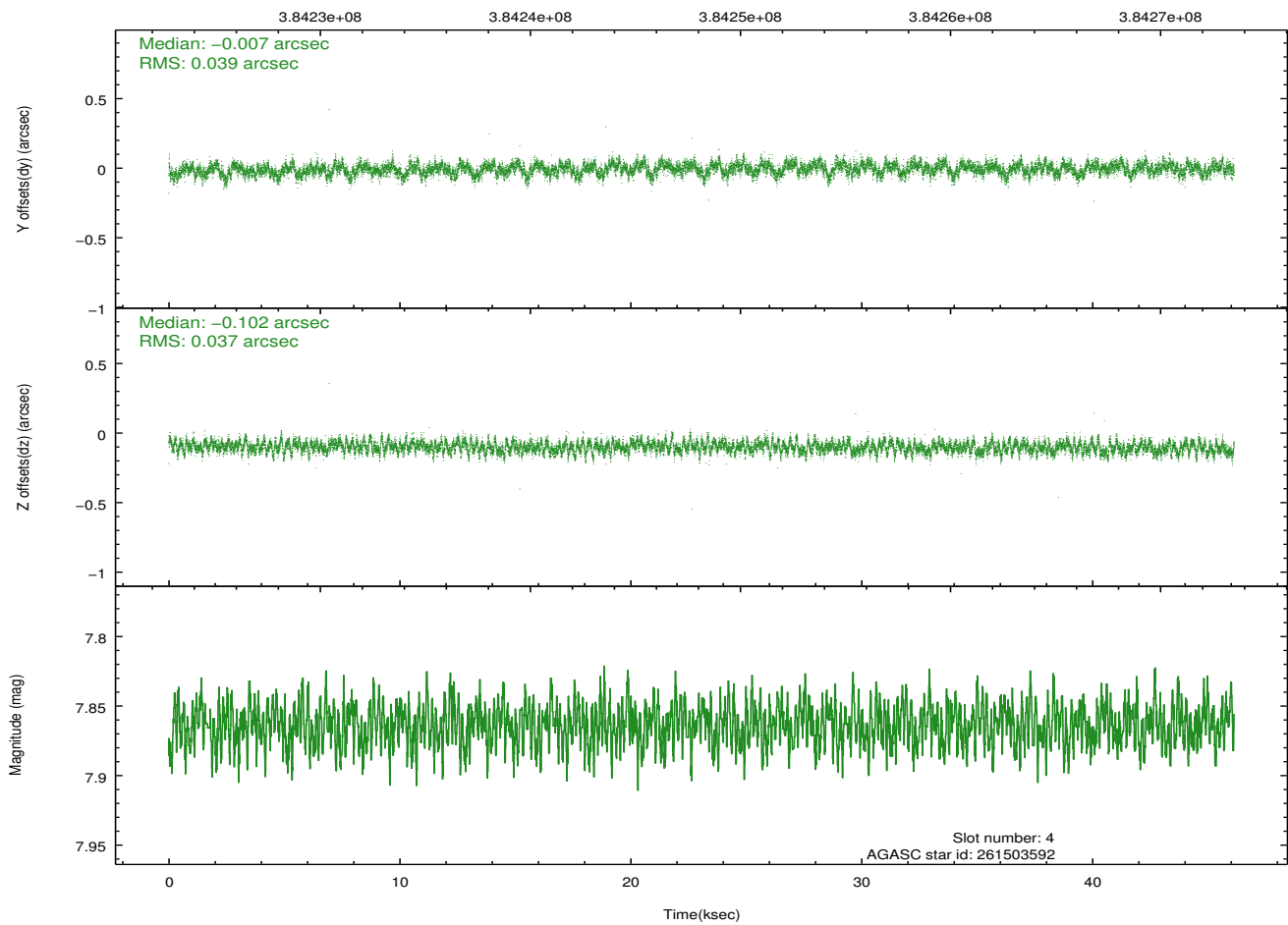
### 2.4.1 Slot 3



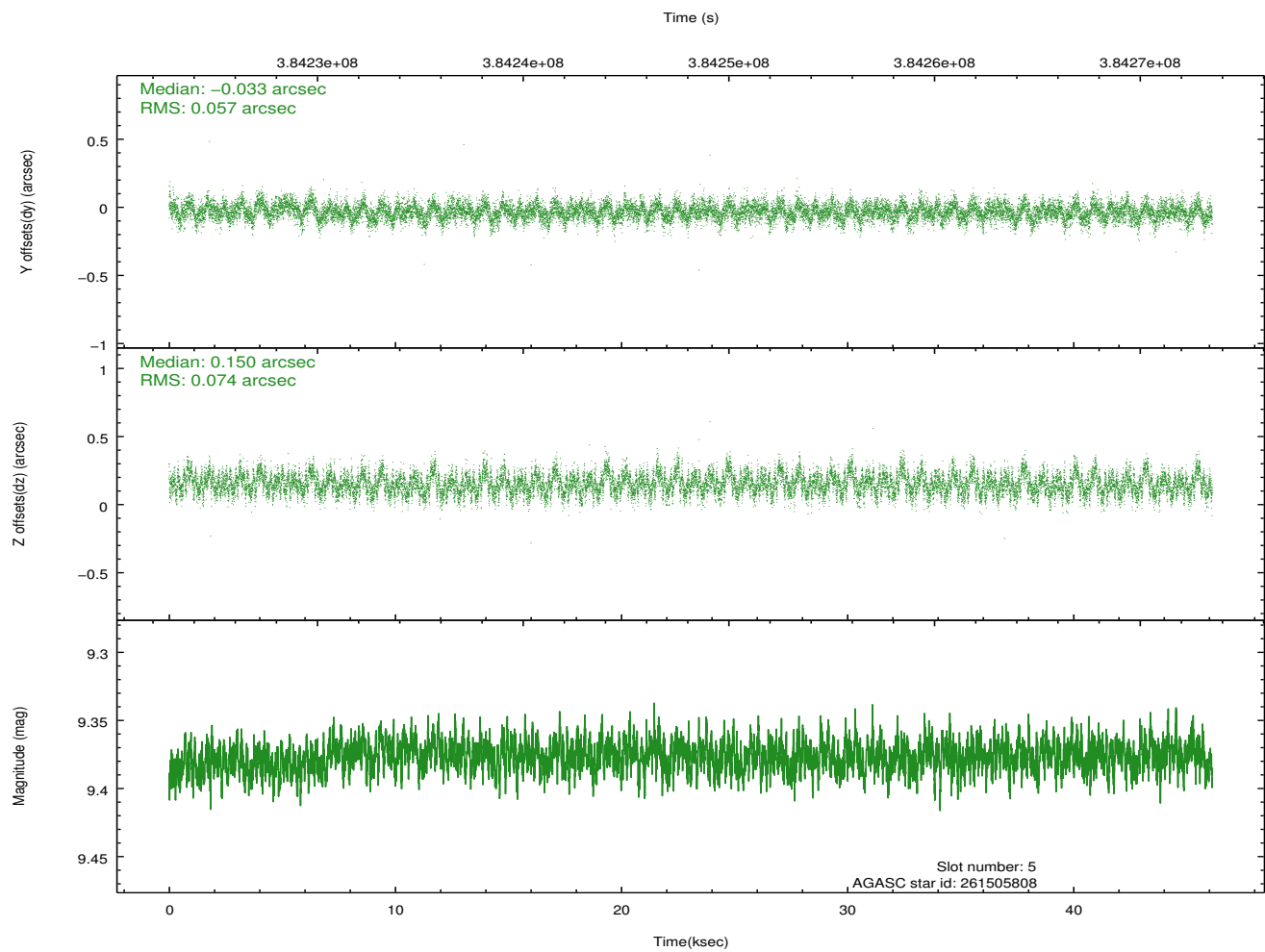
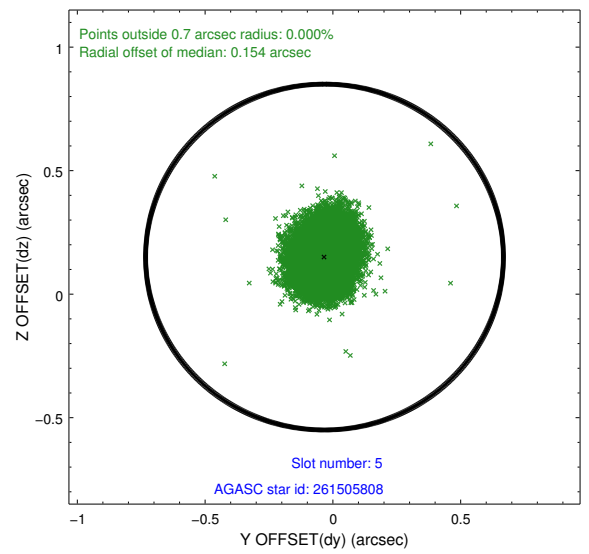
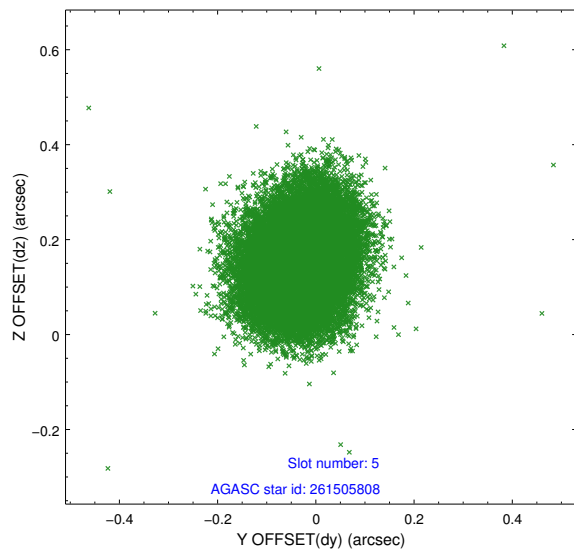
## 2.4.2 Slot 4



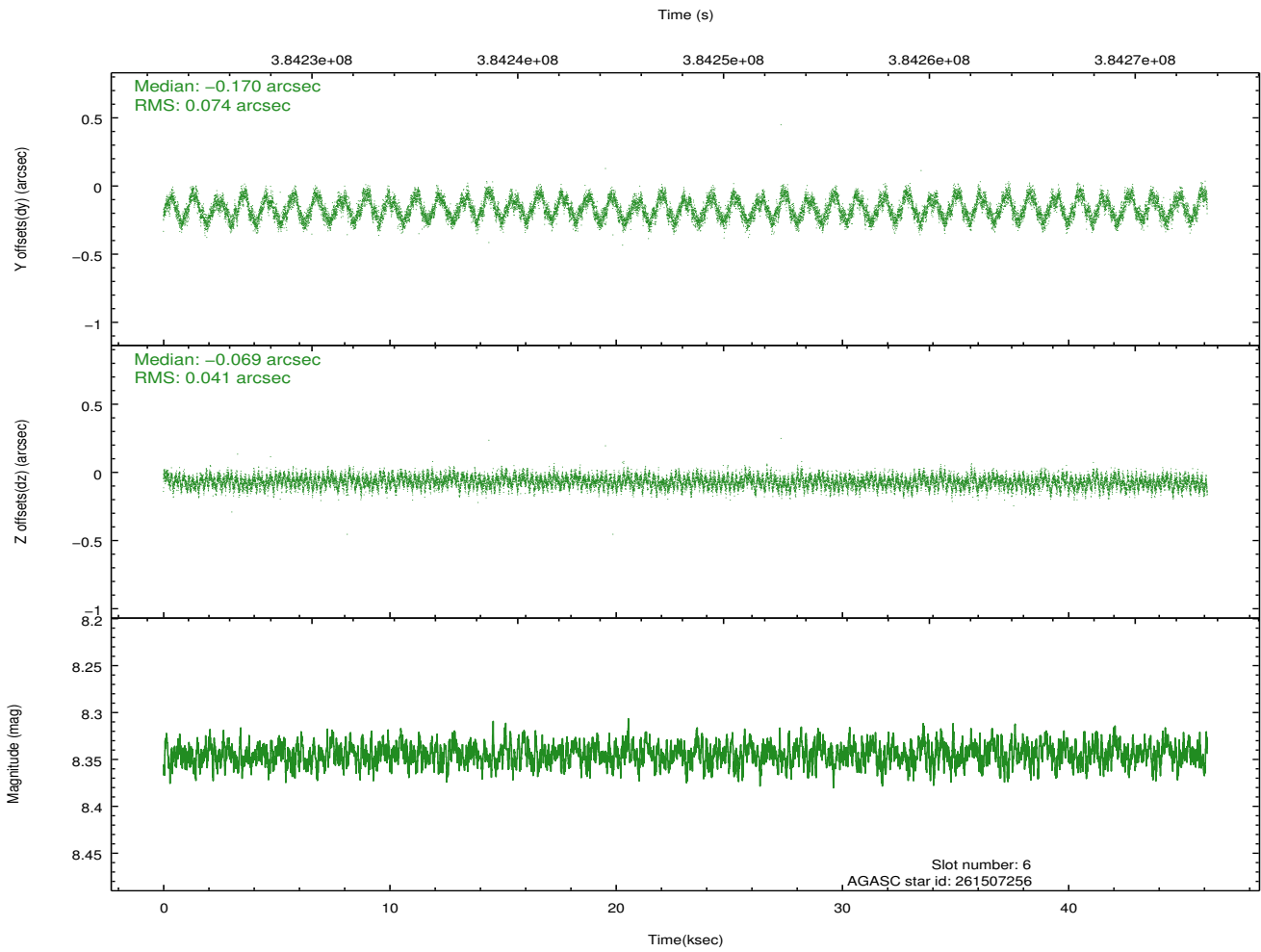
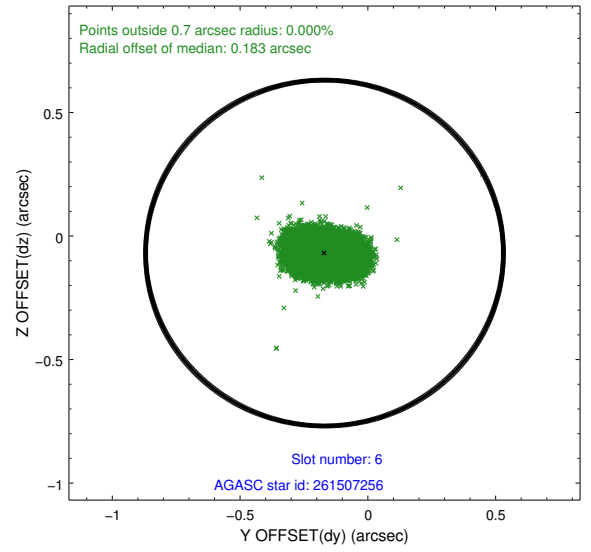
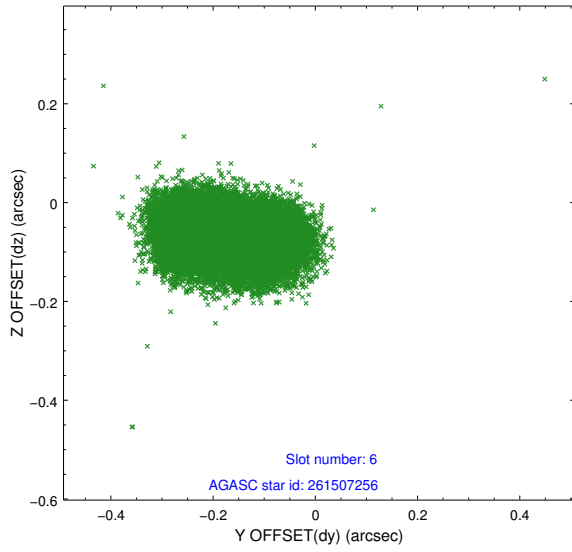
Time (s)



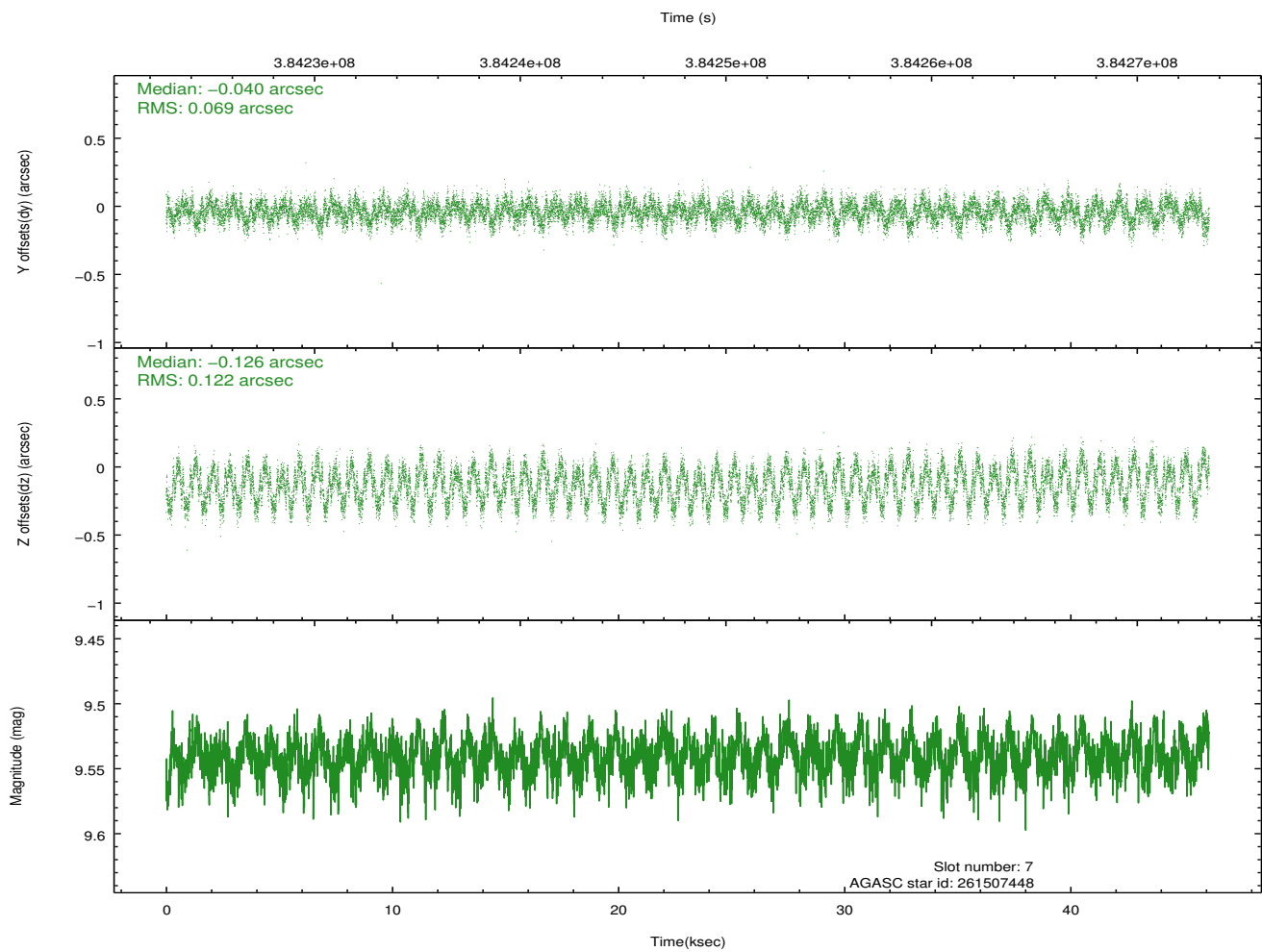
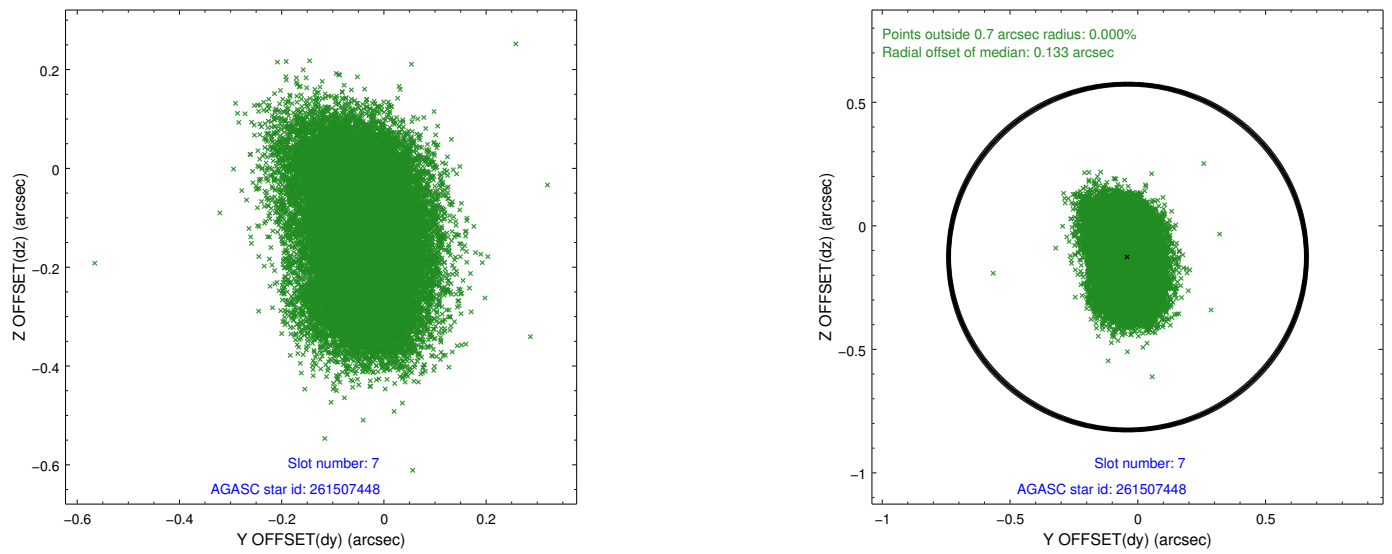
### 2.4.3 Slot 5



## 2.4.4 Slot 6

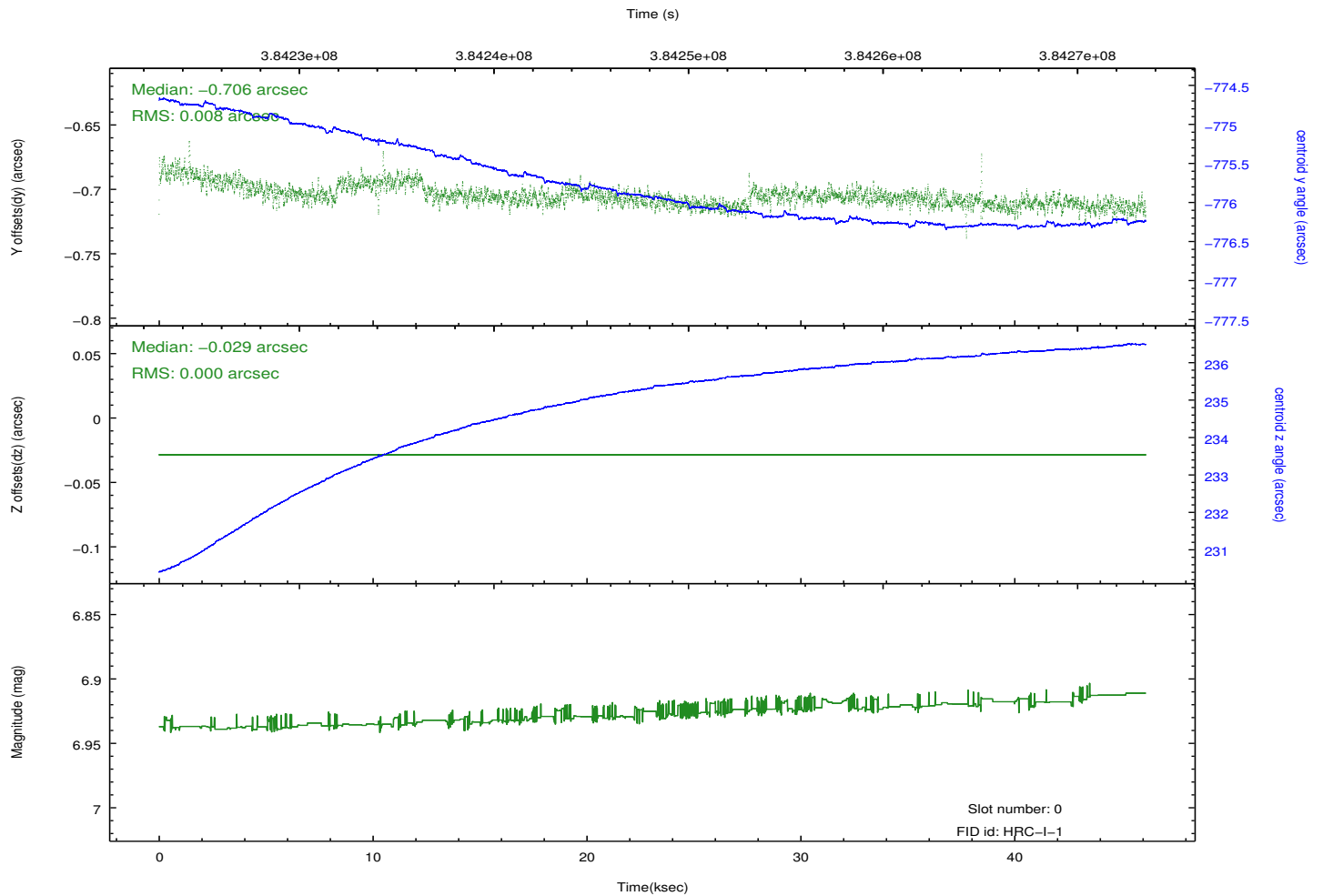
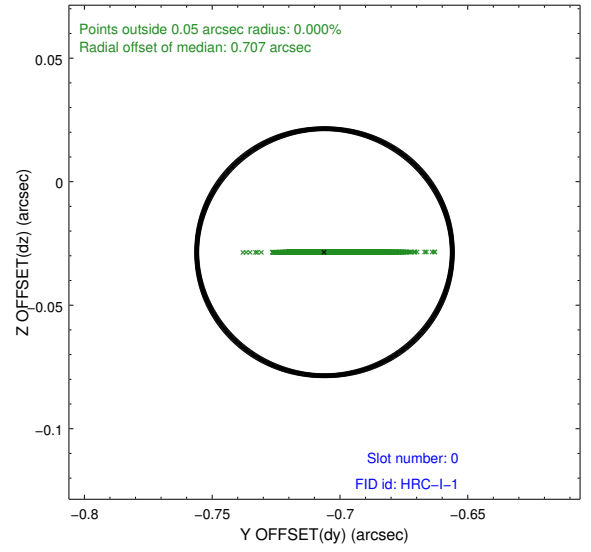
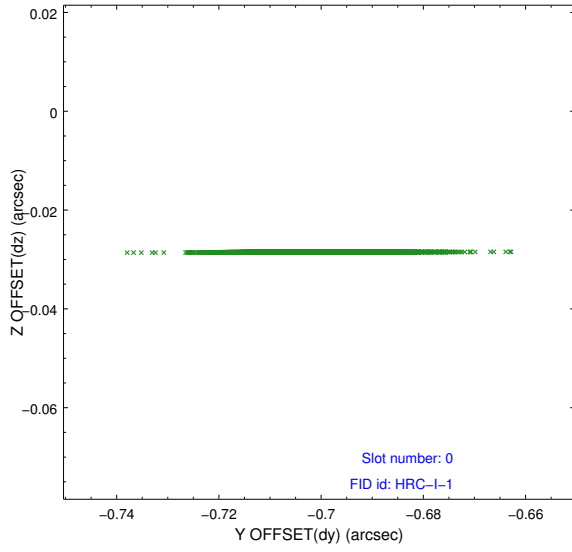


## 2.4.5 Slot 7

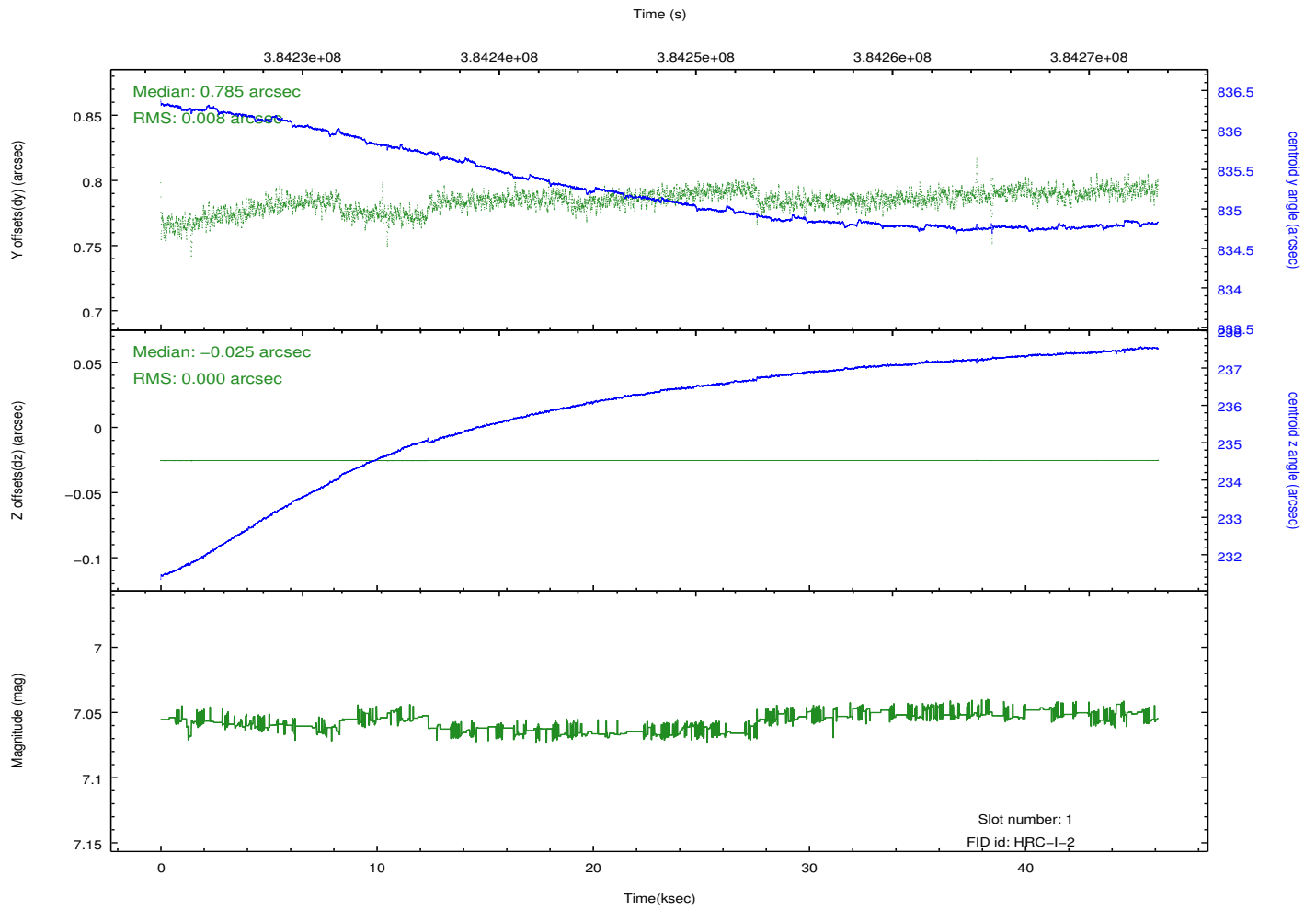
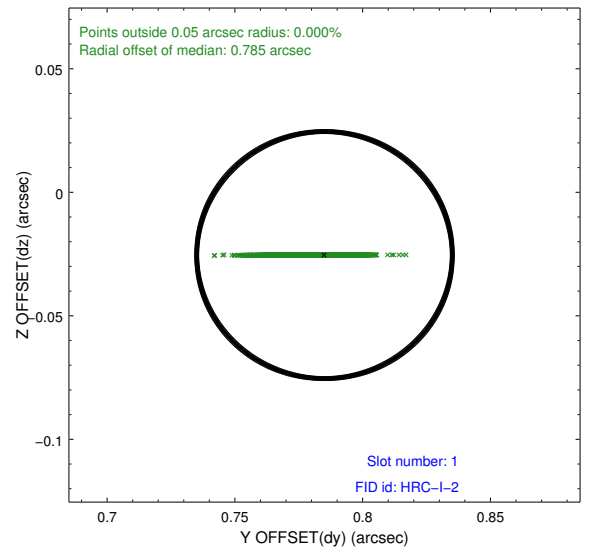
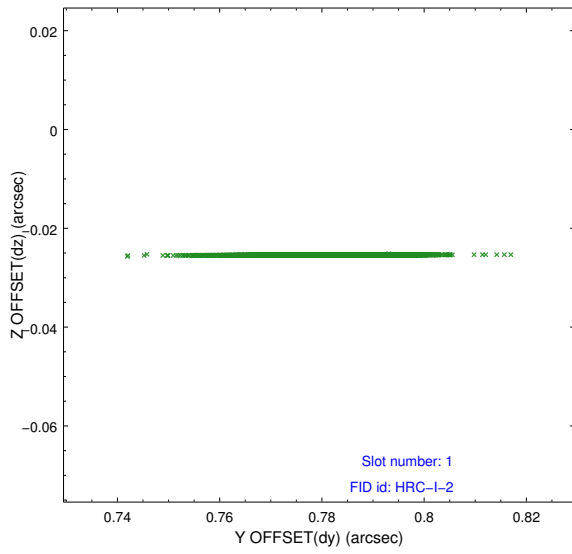


## 2.5 FID Slots

### 2.5.1 Slot 0



## 2.5.2 Slot 1



# A Summary

## A.1 Status

V&V Scientist	Jen Lauer
V&V Date (YYYY-MM-DD)	2012.07.11
V&V Edition	1
V&V Disposition and Status	OK
V&V Charge Time	46.070677339971

## A.2 Comments

This observation was performed with a large SIM offset, per PI request. As a result, the fid light positions are offset beyond normally expected ranges, but the fid light position correction has compensated for this offset. Slot 2 was not utilized in this observation.

=====

Window constraint met.