

V&V Reference Report

L2 ASCDS Version : 8.1.2

Observation 1235 - L2 Version 3
Chandra X-Ray Center

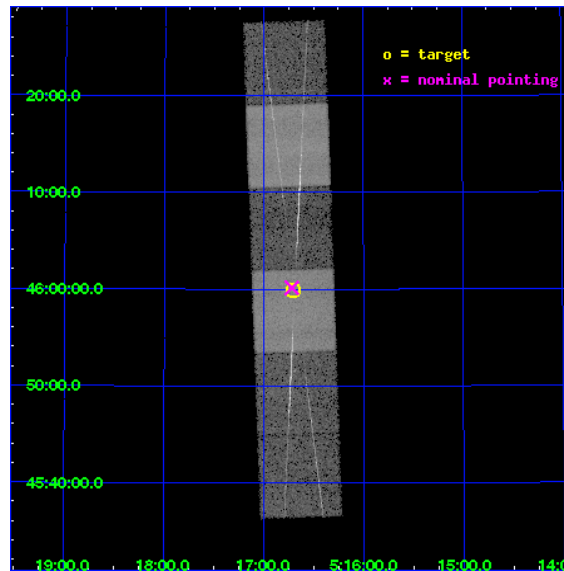
L2 Processing Date : Dec 17 2009

Contents

1	Front	2
2	OBI	3
2.1	OBI	3
2.1.1	Images	3
2.1.2	Bias	3
2.1.3	Parameters	4
2.1.4	Events	4
2.2	Compared Parameters	5
2.3	Aspect	6
2.4	Star Slots	9
2.4.1	Slot 3	9
2.4.2	Slot 4	10
2.4.3	Slot 5	11
2.4.4	Slot 6	12
2.4.5	Slot 7	13
2.5	FID Slots	14
2.5.1	Slot 0	14
2.5.2	Slot 1	15
2.5.3	Slot 2	16
3	Gratings	17
3.1	HEG Arm	17
3.2	MEG Arm	19
A	Summary	21
A.1	Status	21
A.2	Comments	21

1 Front

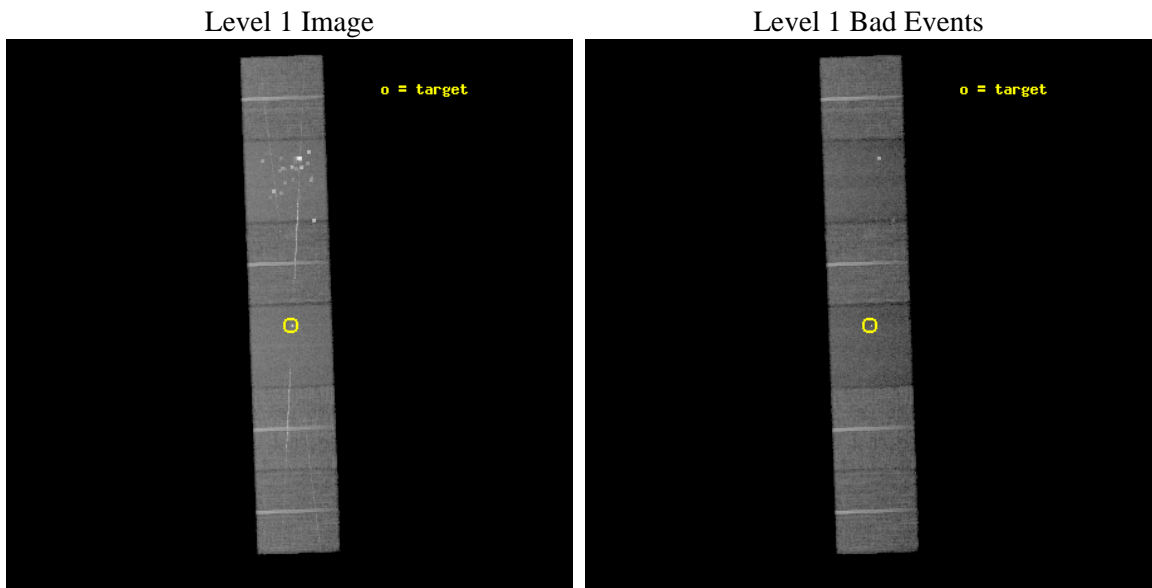
seq_num	280185	Sequence number
obs_id	1235	Observation id
title	 	Proposal title
observer	Dr. CXC Calibration	Principal investigator
object	CAPELLA	Source name
dtcycle	0	
cycle	P	events from which exps? Prim/Second/Both
ra_targ	79.17625	Observer's specified target RA
dec_targ	45.997889	Observer's specified target Dec
ra_nom	79.17966120133	Nominal RA
dec_nom	46.002585804776	Nominal Dec
roll_nom	87.94788624075	Nominal Roll
revision	3	Processing version of data
ontime	14756.93527171	Sum of GTIs [s]
livetime	14570.07407174	Livetime [s]
ontime4	14756.853191711	Sum of GTIs [s]
ontime5	14756.894231707	Sum of GTIs [s]
ontime6	14753.489251129	Sum of GTIs [s]
ontime7	14756.93527171	Sum of GTIs [s]
ontime8	14756.812181637	Sum of GTIs [s]
ontime9	14756.771111712	Sum of GTIs [s]
l2events	213779	Number of level 2 events



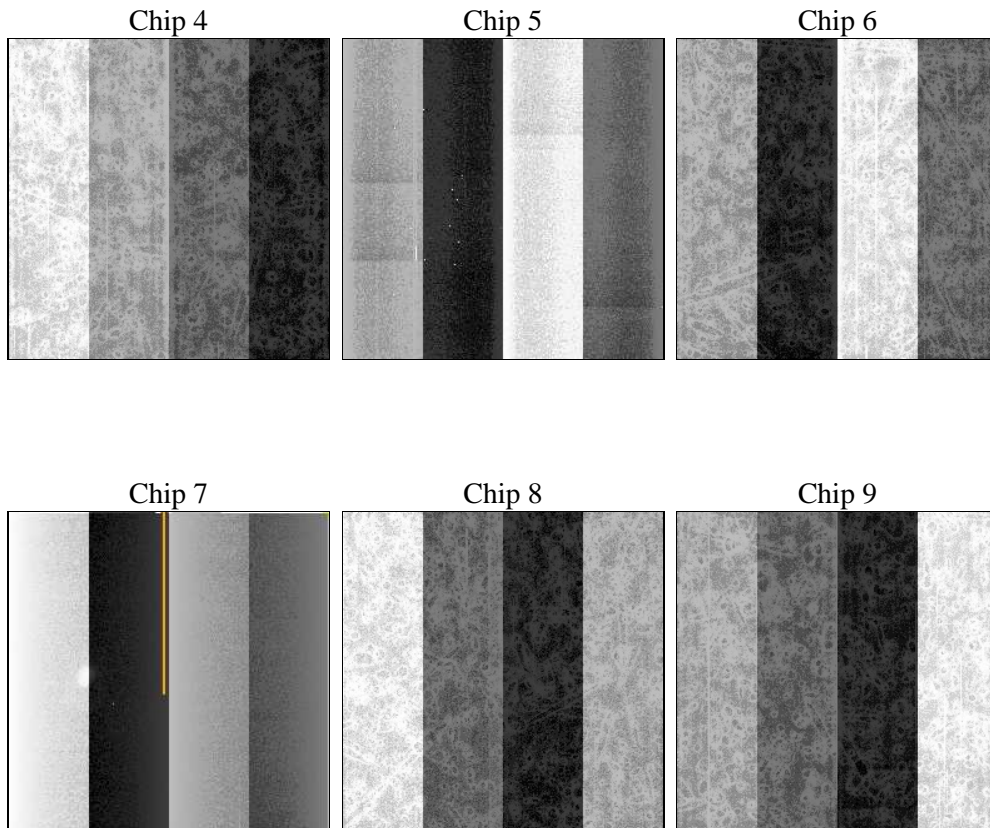
2 OBI

2.1 OBI

2.1.1 Images



2.1.2 Bias



2.1.3 Parameters

obi_num	1	Obi number	sched_exp_time	15000.000000	Scheduled observation exposure time
ascdsver	8.1.2	ASCDS version number	ontime	14756.93527171	Sum of GTIs [s]
caldbver	4.1.4	 	ontime4	14756.853191711	Sum of GTIs [s]
date	2009-12-17T11:56:38	Date and time of file creation	ontime5	14756.894231707	Sum of GTIs [s]
revision	3	Processing version of data	ontime6	14753.489251129	Sum of GTIs [s]
			ontime7	14756.93527171	Sum of GTIs [s]
			ontime8	14756.812181637	Sum of GTIs [s]
			ontime9	14756.771111712	Sum of GTIs [s]
			l1events	1053973	Number of level 1 events

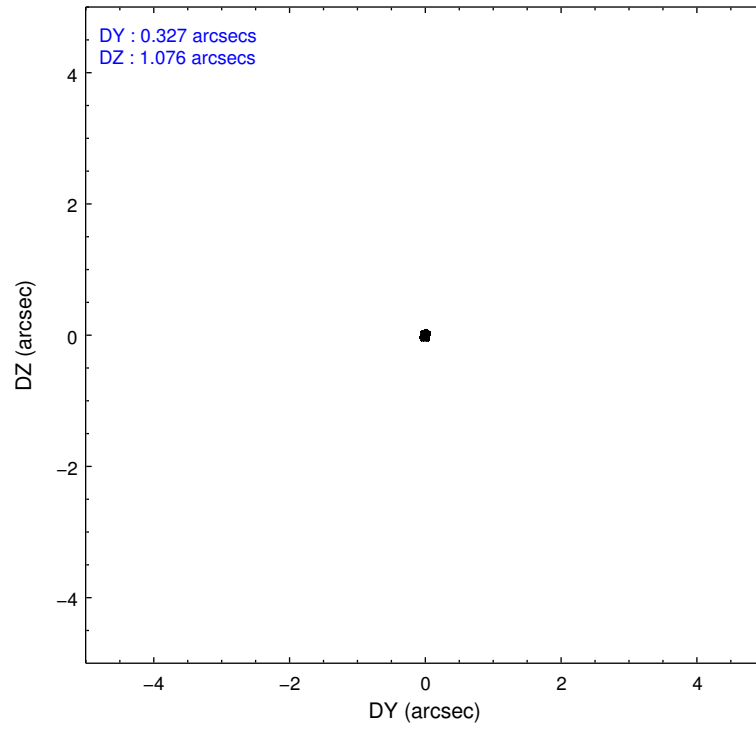
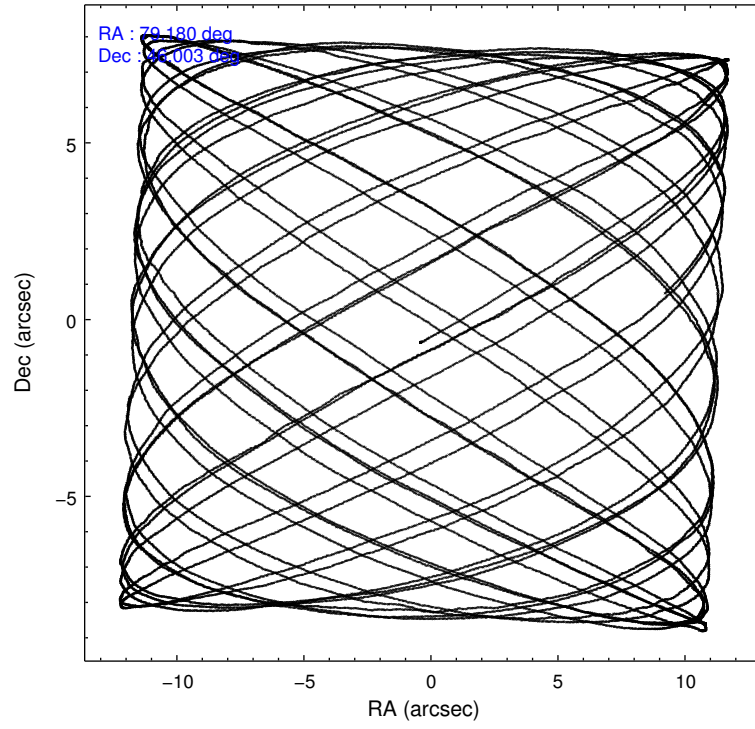
2.1.4 Events

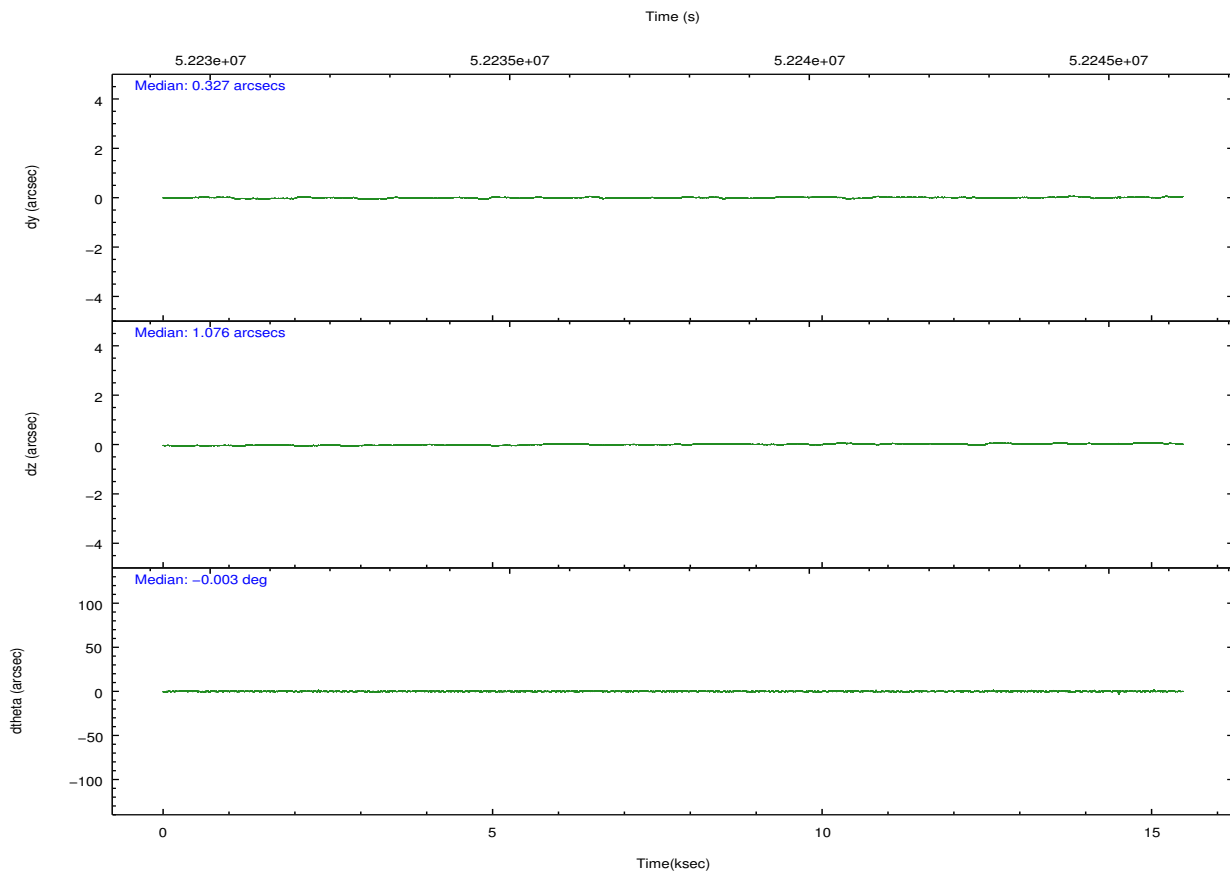
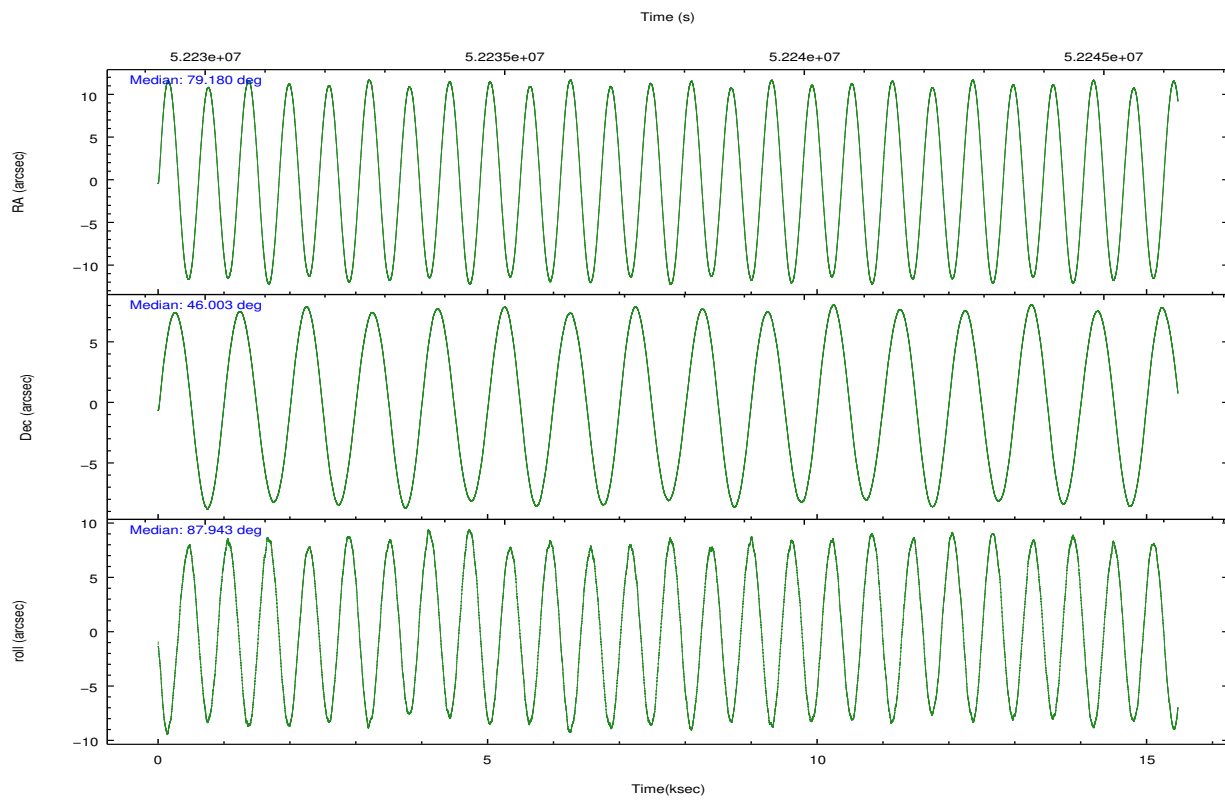
	ccd 4	ccd 5	ccd 6	ccd 7	ccd 8	ccd 9		ccd 4	ccd 5	ccd 6	ccd 7	ccd 8	ccd 9
level 1 events	161648	231224	158088	162616	190951	149446	grade 0 events	5910	45036	10916	5320	16925	6196
rejected events	146117	99045	136373	96363	152979	133110		3%	19%	6%	3%	8%	4%
rejected %	90%	42%	86%	59%	80%	89%	grade 1 events	47	1006	71	194	137	48
								0%	0%	0%	0%	0%	0%
							grade 2 events	4618	26975	4924	10961	9174	4449
								2%	11%	3%	6%	4%	2%
							grade 3 events	1148	6966	1285	6658	2506	1263
								0%	3%	0%	4%	1%	0%
							grade 4 events	1087	6424	1331	5505	2382	1163
								0%	2%	0%	3%	1%	0%
							grade 5 events	2870	8426	3533	10871	4857	3802
								1%	3%	2%	6%	2%	2%
							grade 6 events	2772	46836	3267	37840	6997	3270
								1%	20%	2%	23%	3%	2%
							grade 7 events	143196	89555	132761	85267	147973	129255
								88%	38%	83%	52%	77%	86%

2.2 Compared Parameters

Parameter	Planned	Actual	Parameter	Planned	Actual
Instrument	ACIS	ACIS	Obspar format version number	6	6
Detector	ACIS-456789	ACIS-456789	Obspar file type	PREDICTED	ACTUAL
Grating	HETG	HETG	Obspar update status	NONE	UPDATED
Data mode	FAINT	FAINT	Number of optional ACIS chips dropped	0	0
Observation mode	POINTING	POINTING	On-chip summing requested	N	N
Pointing RA	79.197712	79.17966120132986	Subarray requested	NONE	NONE
Pointing Dec	45.977967	46.00258580477639	Alternating exposures requested	N	N
Pointing Roll	87.778273	87.94788624074968	Primary exposure time	0.000000	3.2
SIM focus pos (mm)	-0.684267	-0.7362356599963374			
SIM defocus (mm)	0	-0.0519681986964412			
SIM translation stage pos (mm)	-190.132523	-190.1425803651734			
SIM translation stage offset (mm)	0	0.01005778216563158			
Observation start time	52230464.184000	52229797.101497			
Observation start date	1999-08-28T12:26:40	1999-08-28T12:16:37			
Observation end time	52245464.184000	52245597.477065			
Observation end date	1999-08-28T16:36:40	1999-08-28T16:39:57			
Read mode	TIMED	TIMED			

2.3 Aspect



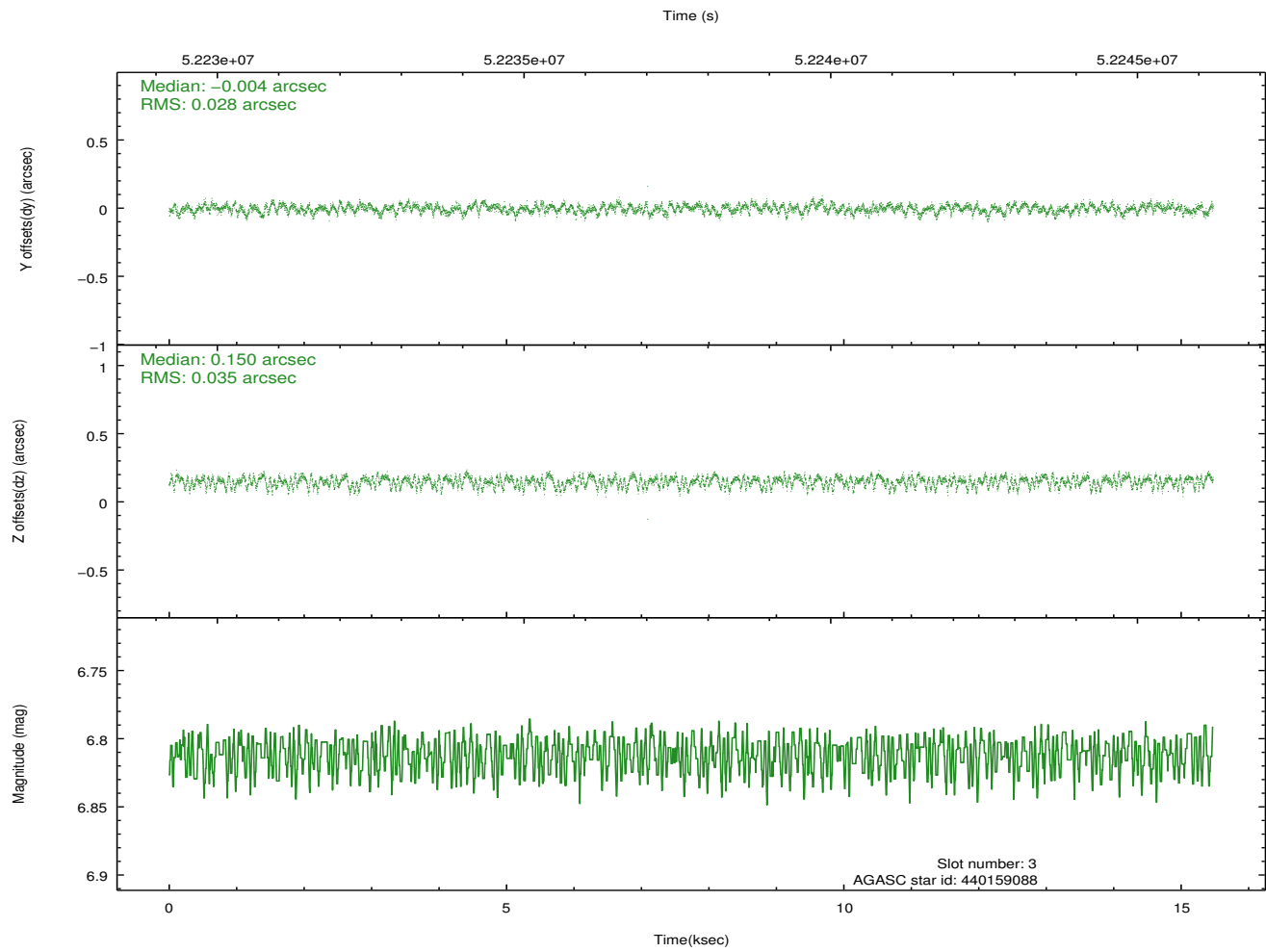
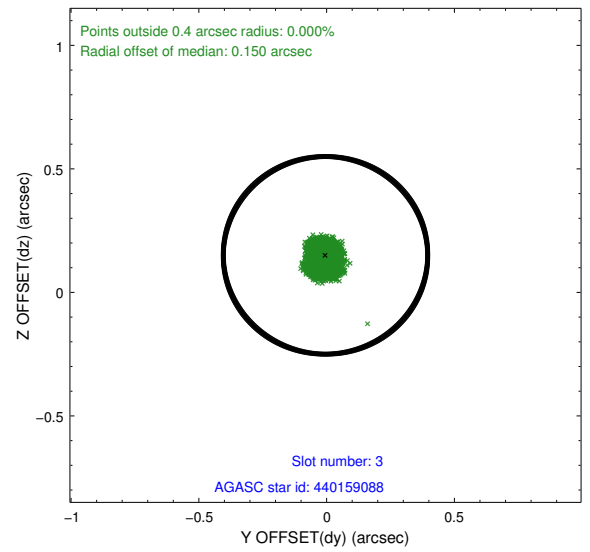
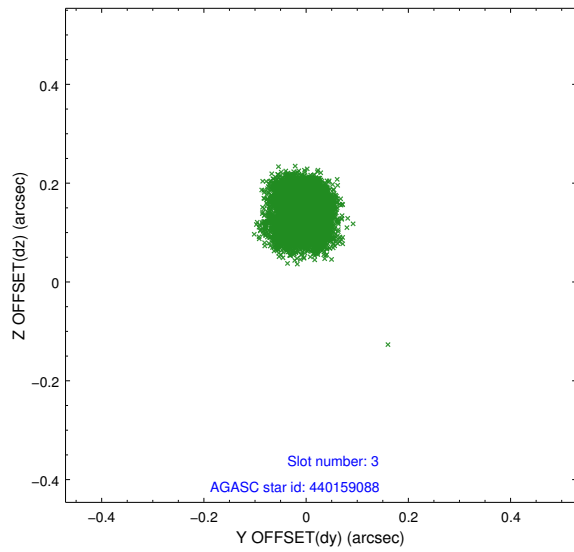


Slot Statistics

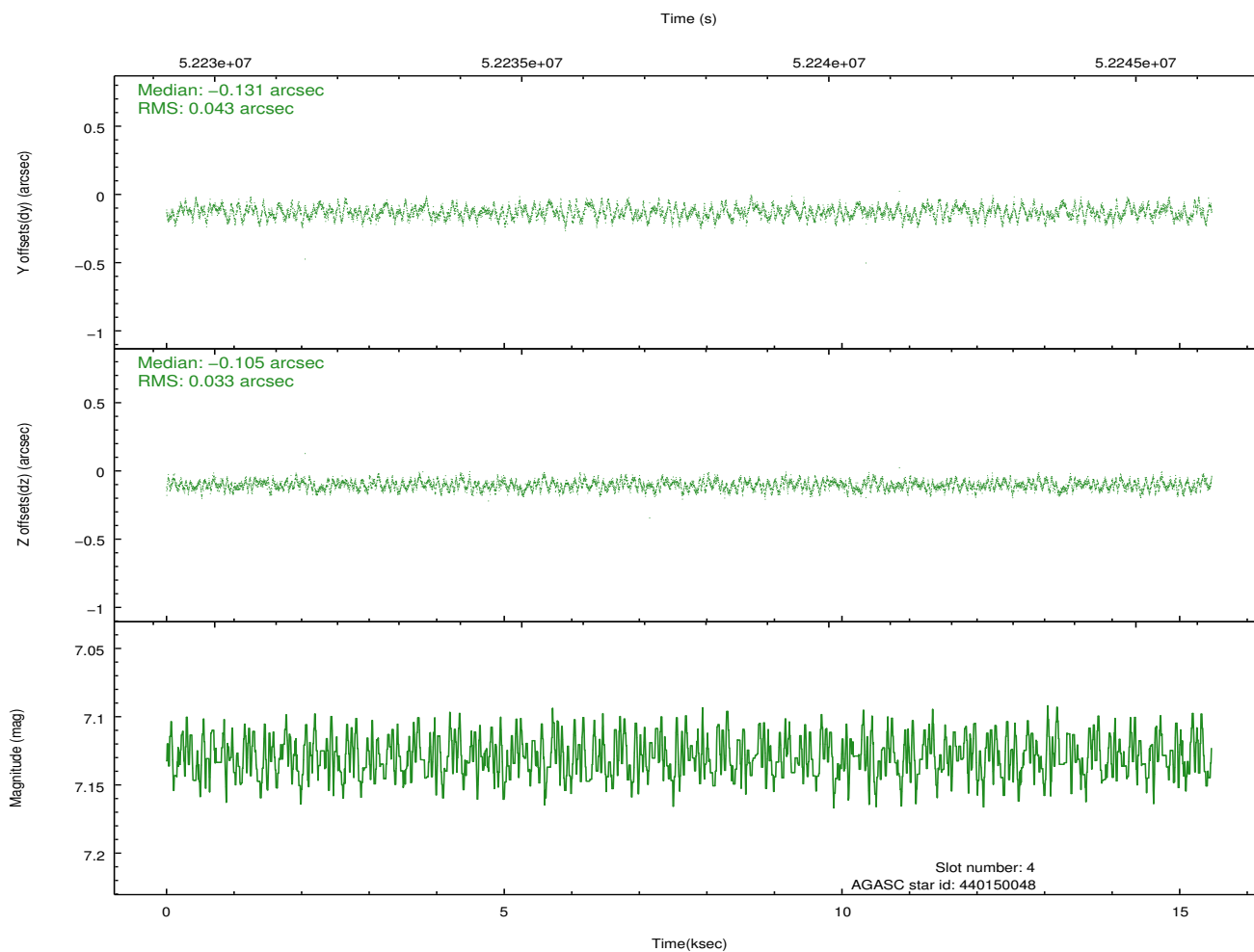
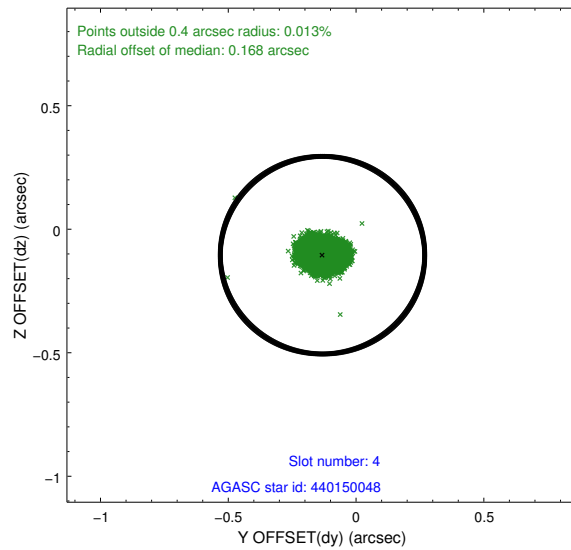
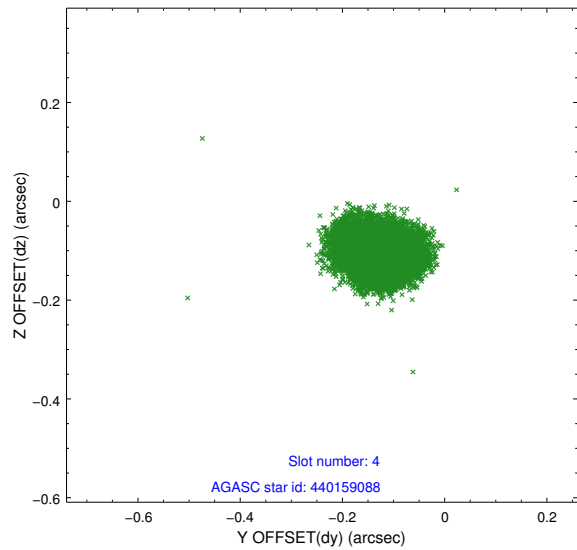
slot	status	id	mag	n_pts	med_dy	med_dz	dr1	dr2	ra	dec	mean_y	mean_z
0	FID	ACIS-S-2	7.12	7550	-0.018	0.007	0.006	0.011	0.000000	0.000000	-752.94	-1722.00
1	FID	ACIS-S-4	7.22	7549	0.075	0.007	0.005	0.010	0.000000	0.000000	2160.42	186.35
2	FID	ACIS-S-5	7.25	7550	-0.089	-0.005	0.006	0.010	0.000000	0.000000	-1805.73	180.16
3	GUIDE	440159088	6.81	7550	-0.004	0.150	0.047	0.078	79.453034	46.128063	565.37	-614.93
4	GUIDE	440150048	7.13	7548	-0.131	-0.105	0.060	0.090	79.112838	46.416060	1567.49	272.02
5	GUIDE	440149808	8.42	7546	-0.067	-0.003	0.055	0.087	78.873930	46.405955	1509.83	863.54
6	GUIDE	438460832	8.98	7546	0.112	-0.224	0.085	0.137	78.414614	45.554782	-1589.38	1914.10
7	GUIDE	440145944	9.09	7542	0.090	0.185	0.083	0.127	80.083717	45.428844	-1876.52	-2312.26

2.4 Star Slots

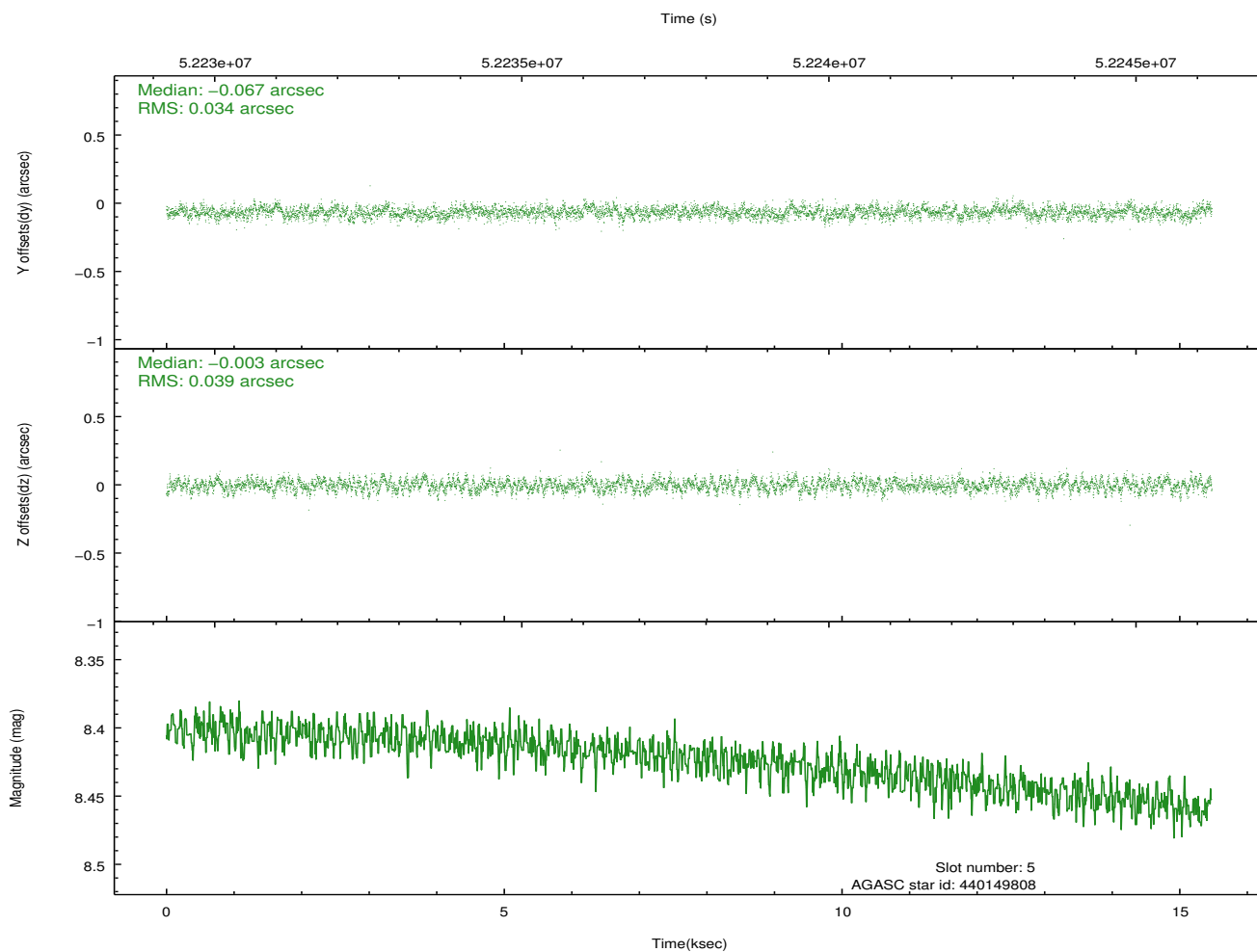
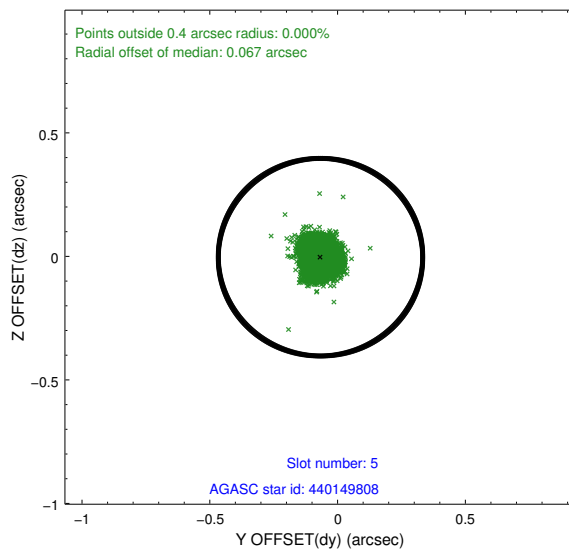
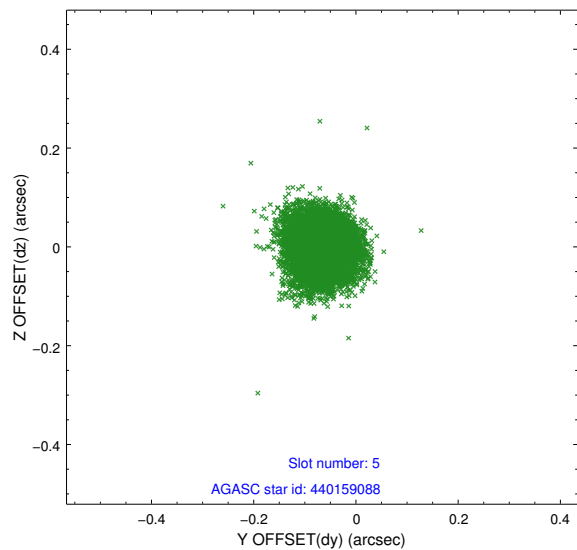
2.4.1 Slot 3



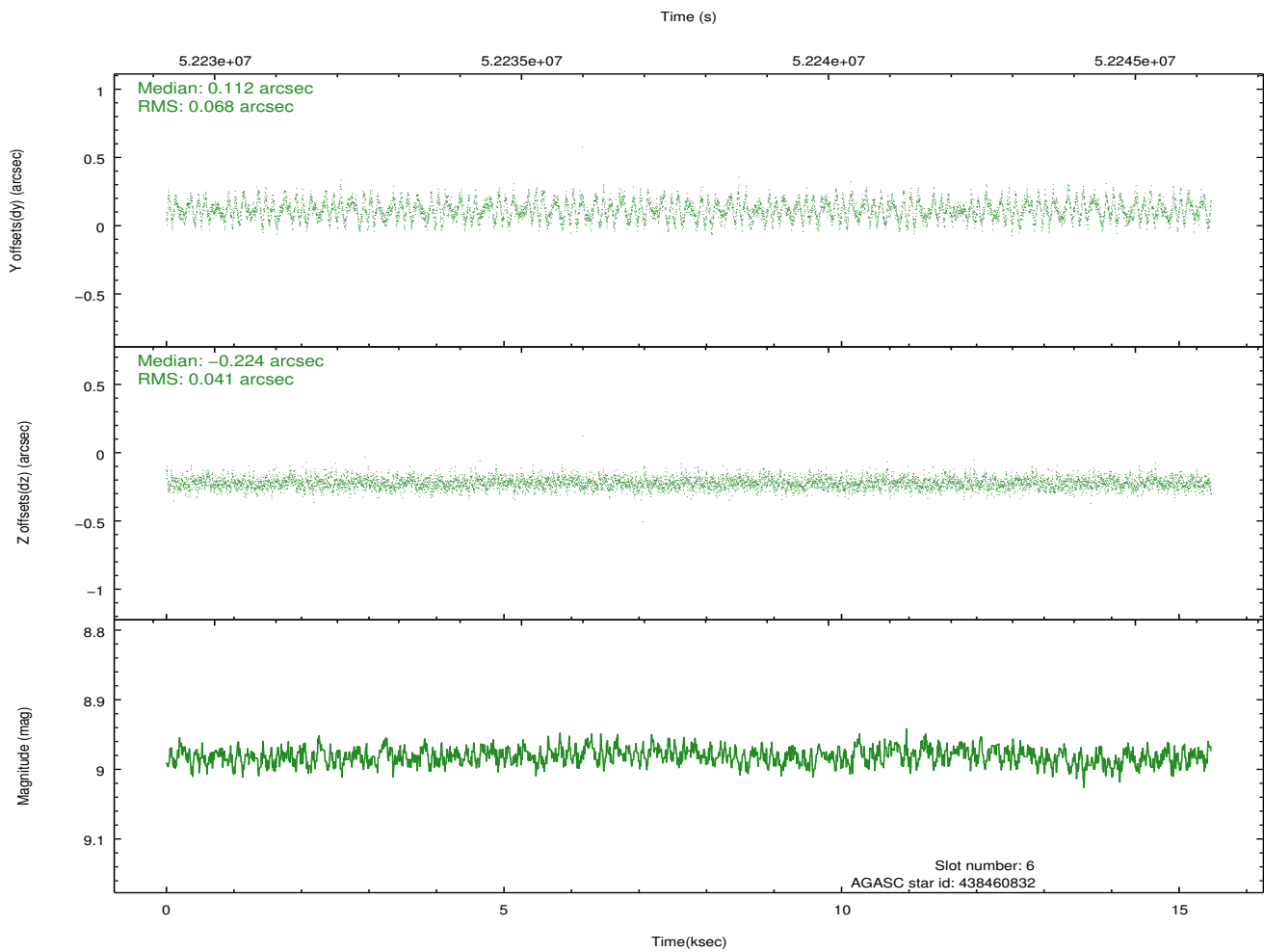
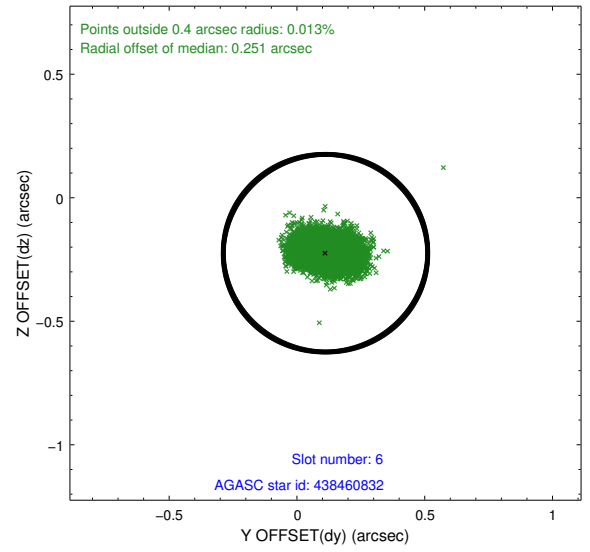
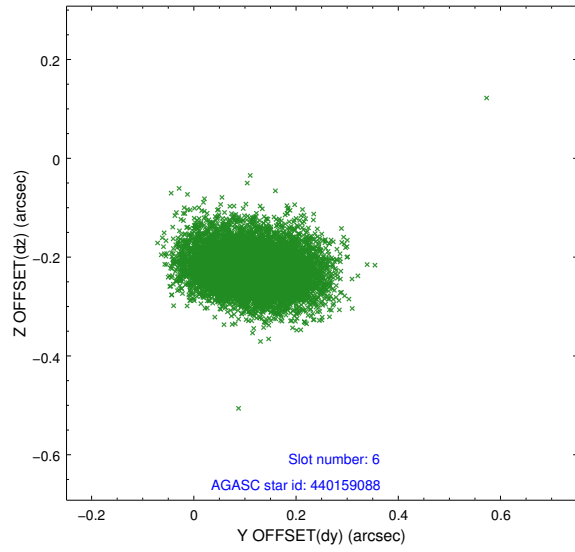
2.4.2 Slot 4



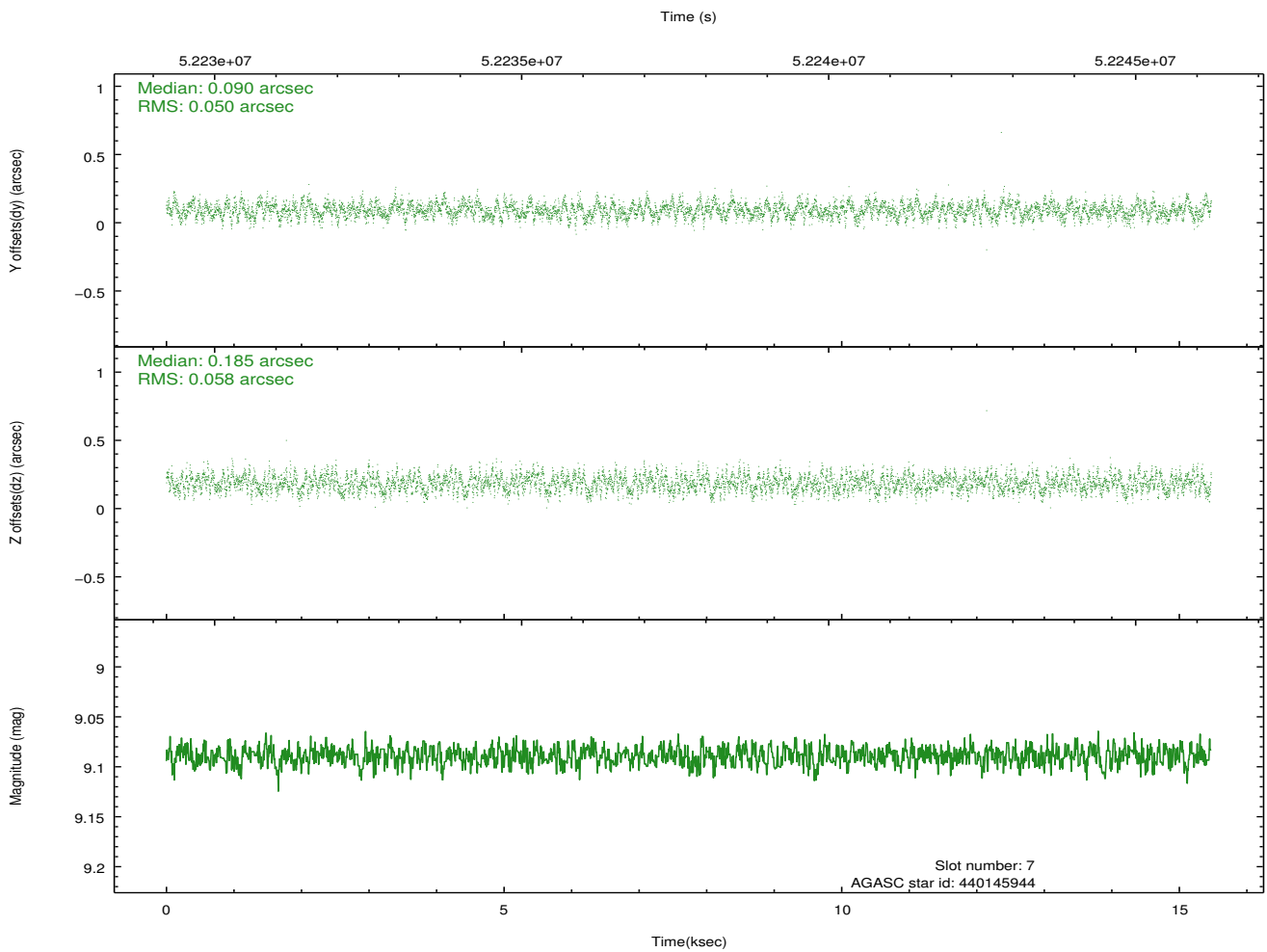
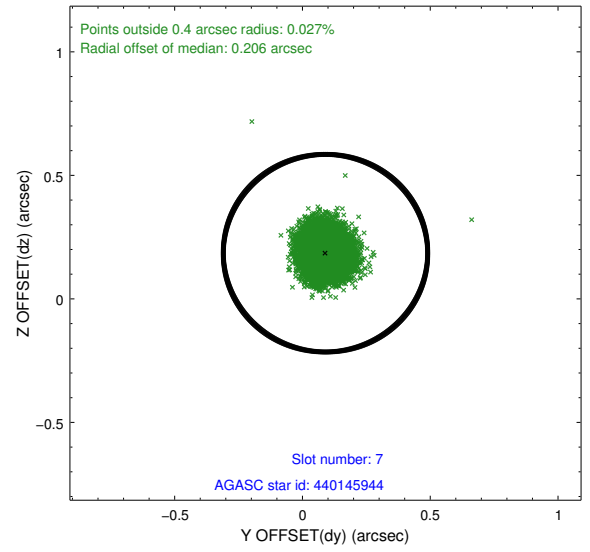
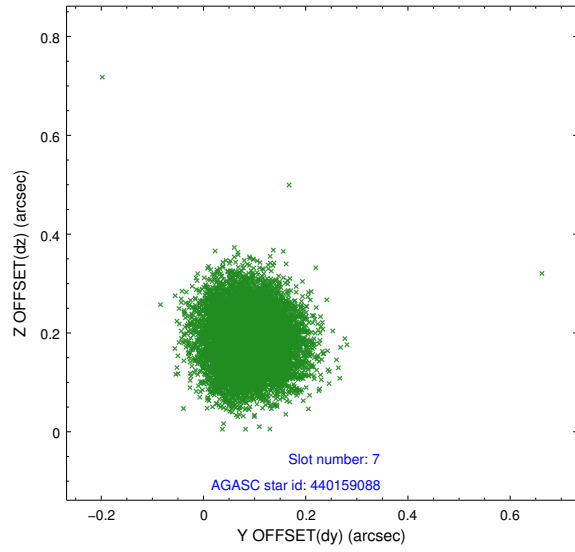
2.4.3 Slot 5



2.4.4 Slot 6

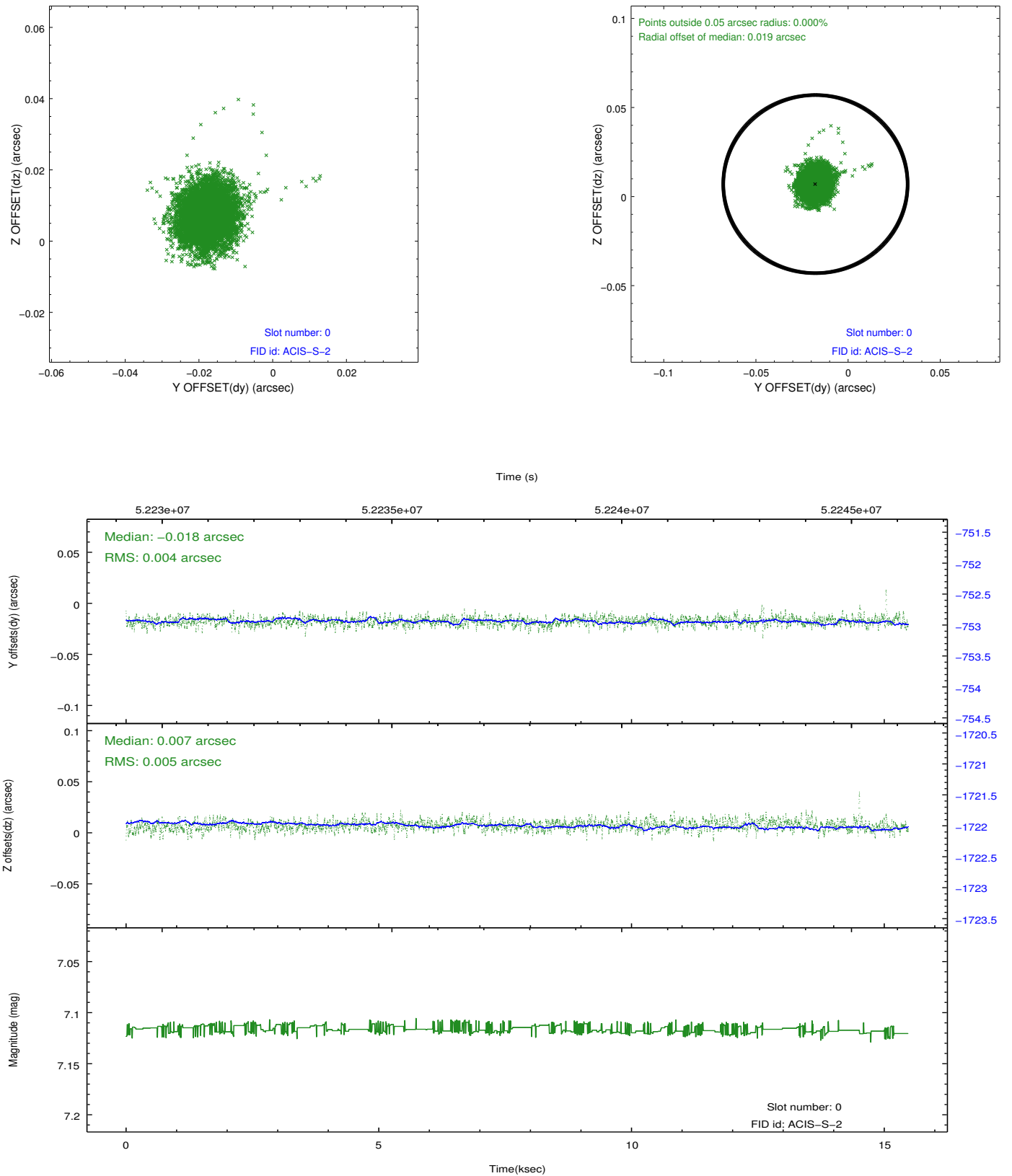


2.4.5 Slot 7

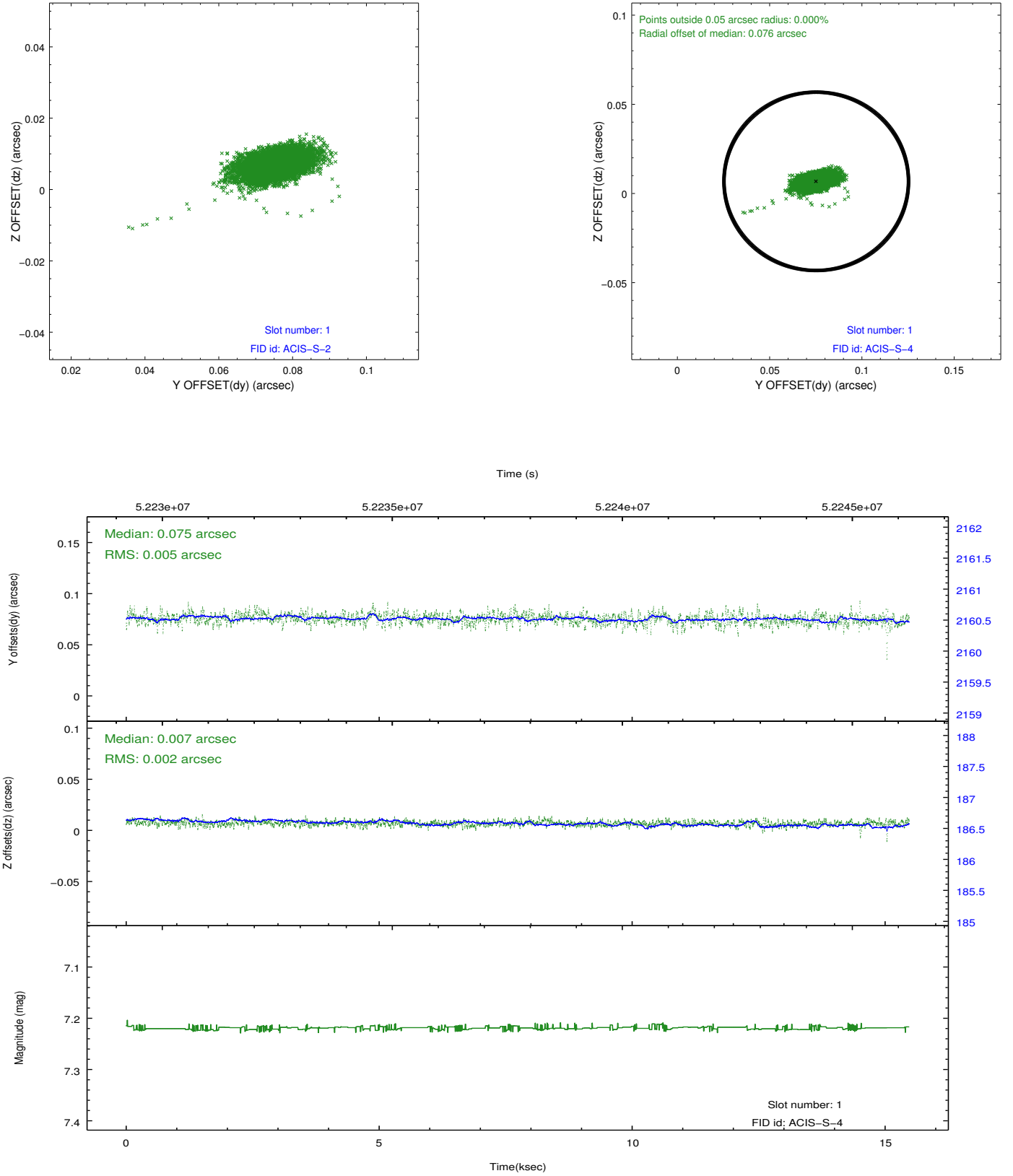


2.5 FID Slots

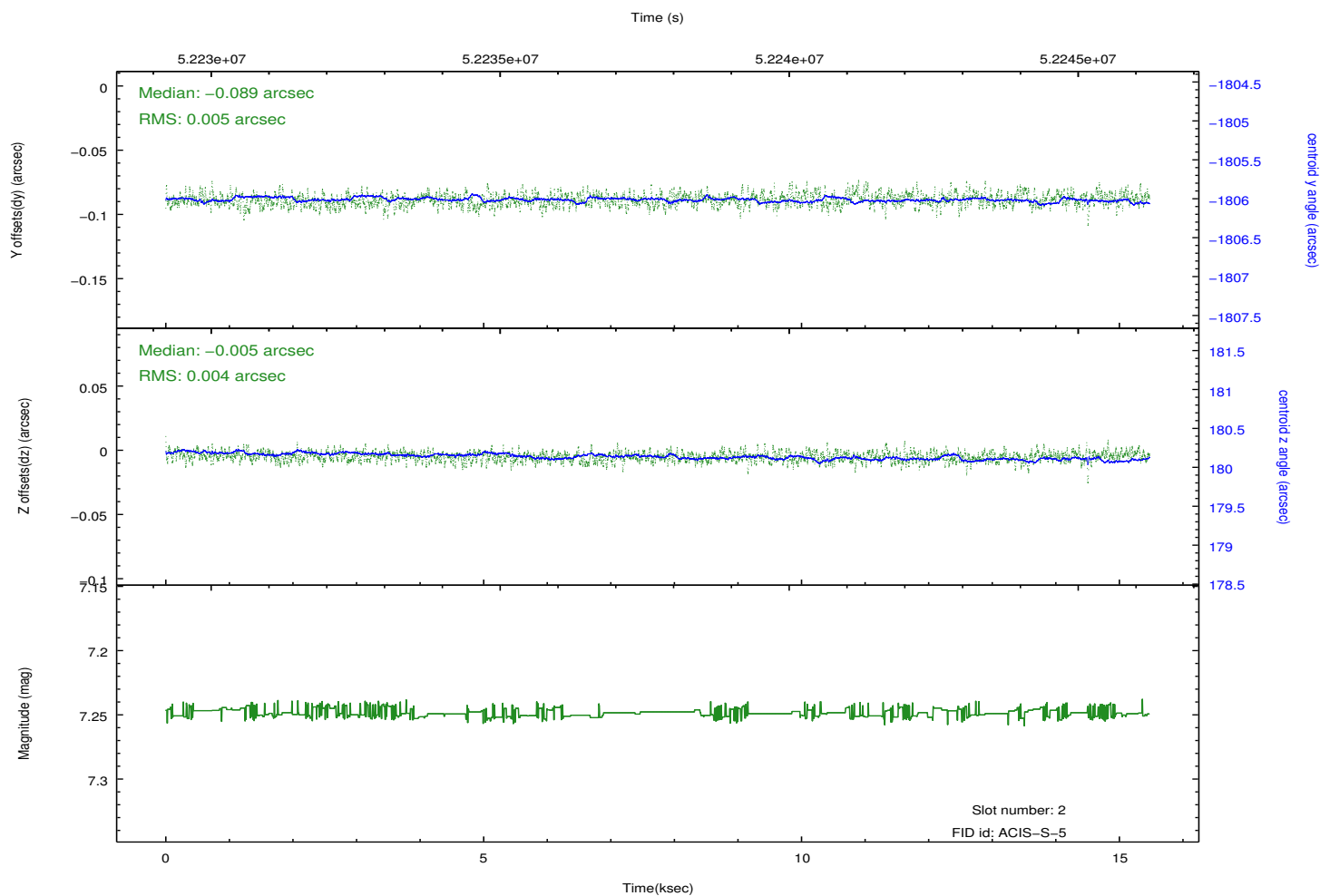
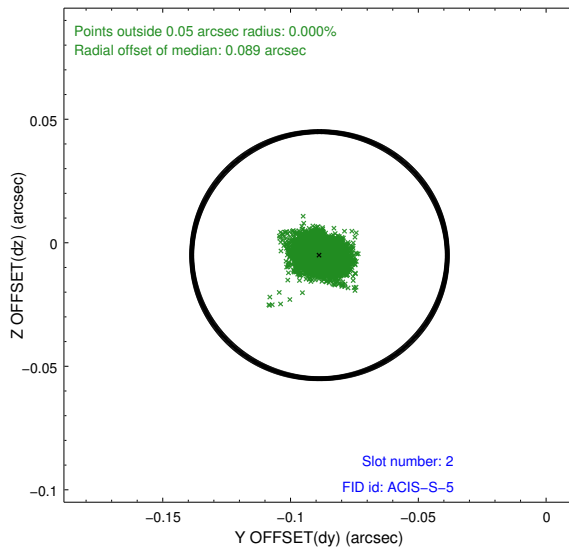
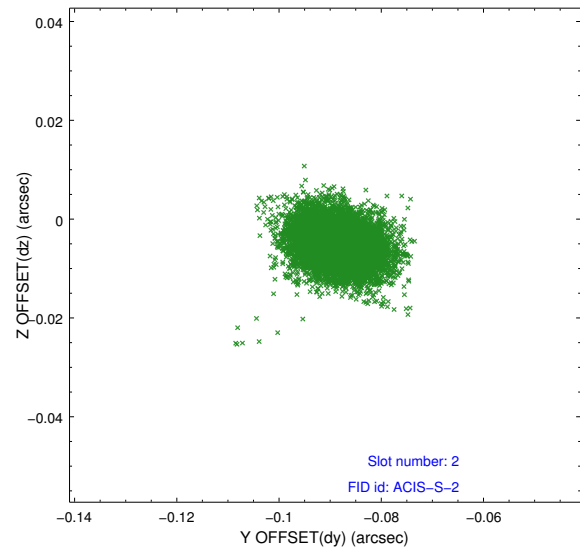
2.5.1 Slot 0



2.5.2 Slot 1

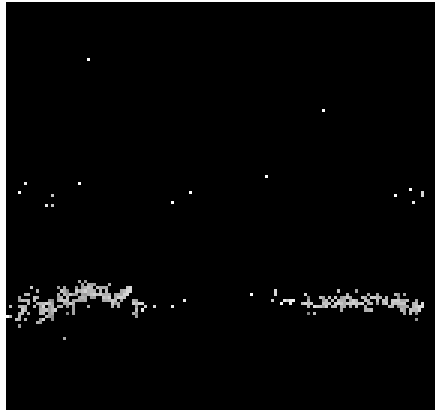


2.5.3 Slot 2

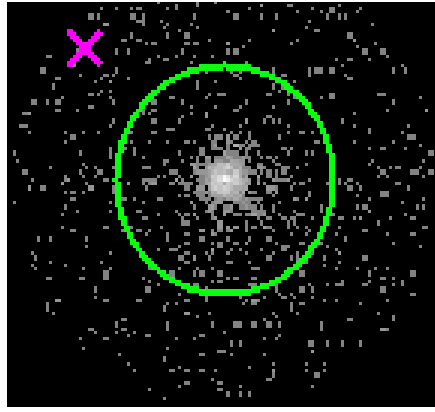


3 Gratings

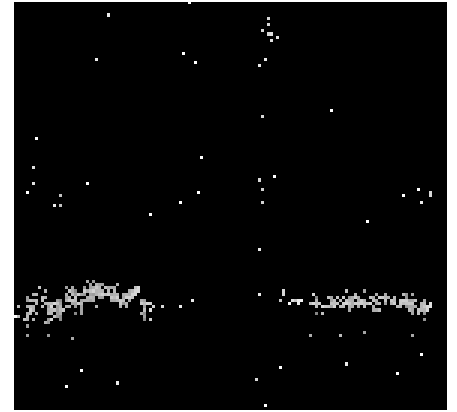
3.1 HEG Arm



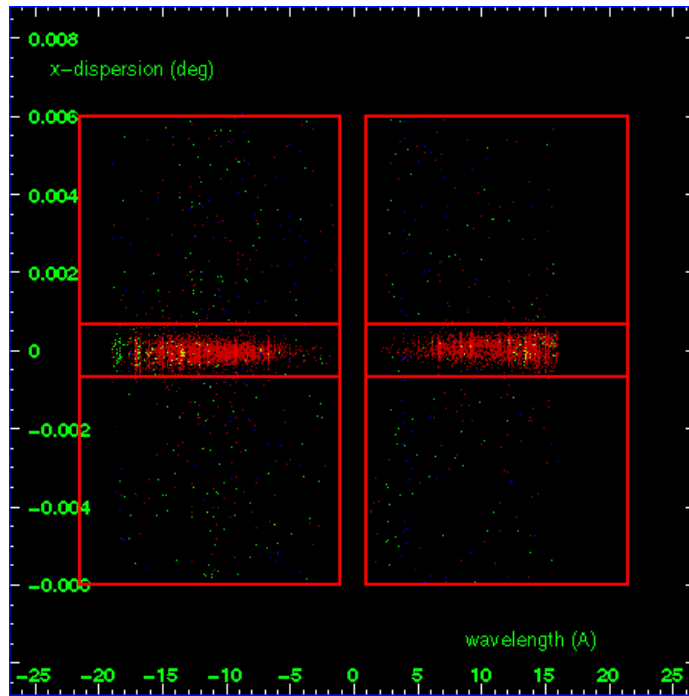
HEG Order Sort 123



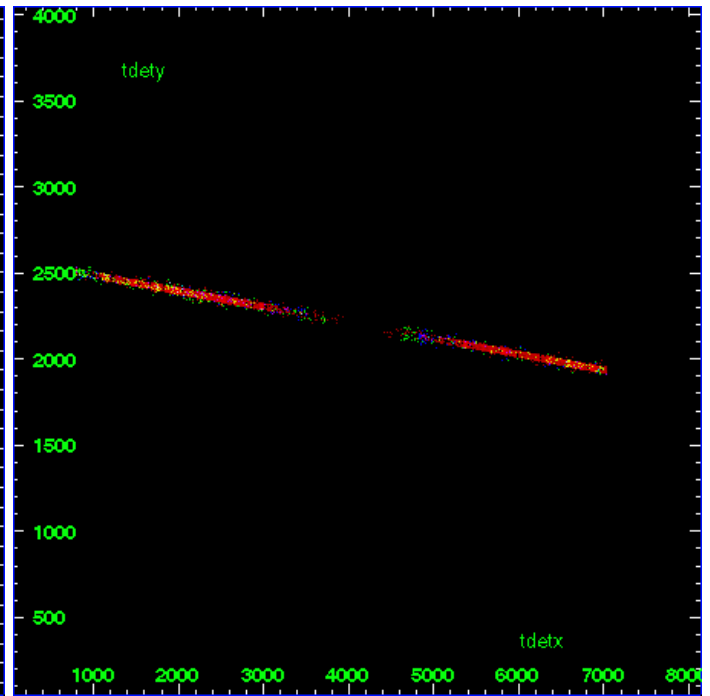
HEG Zero Order



HEG Order Sort ALL

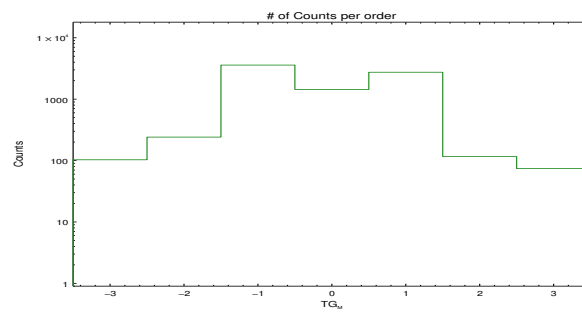


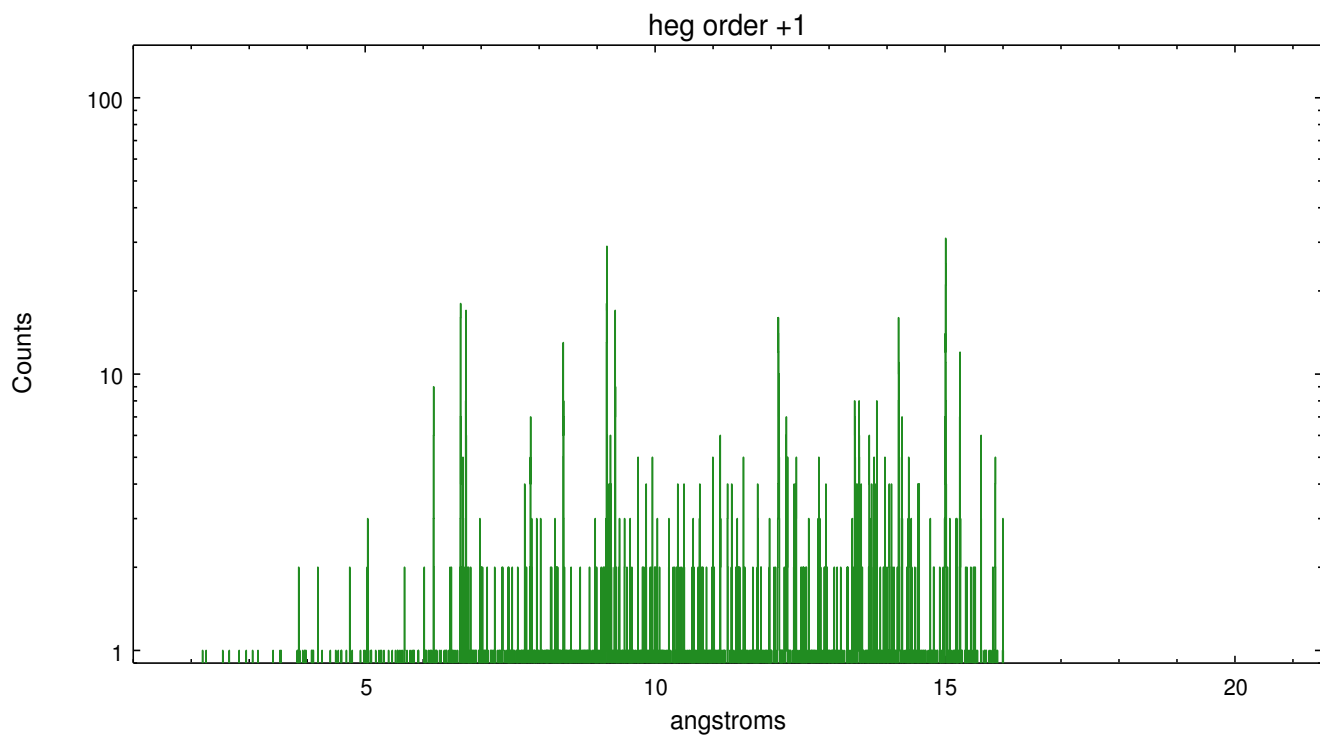
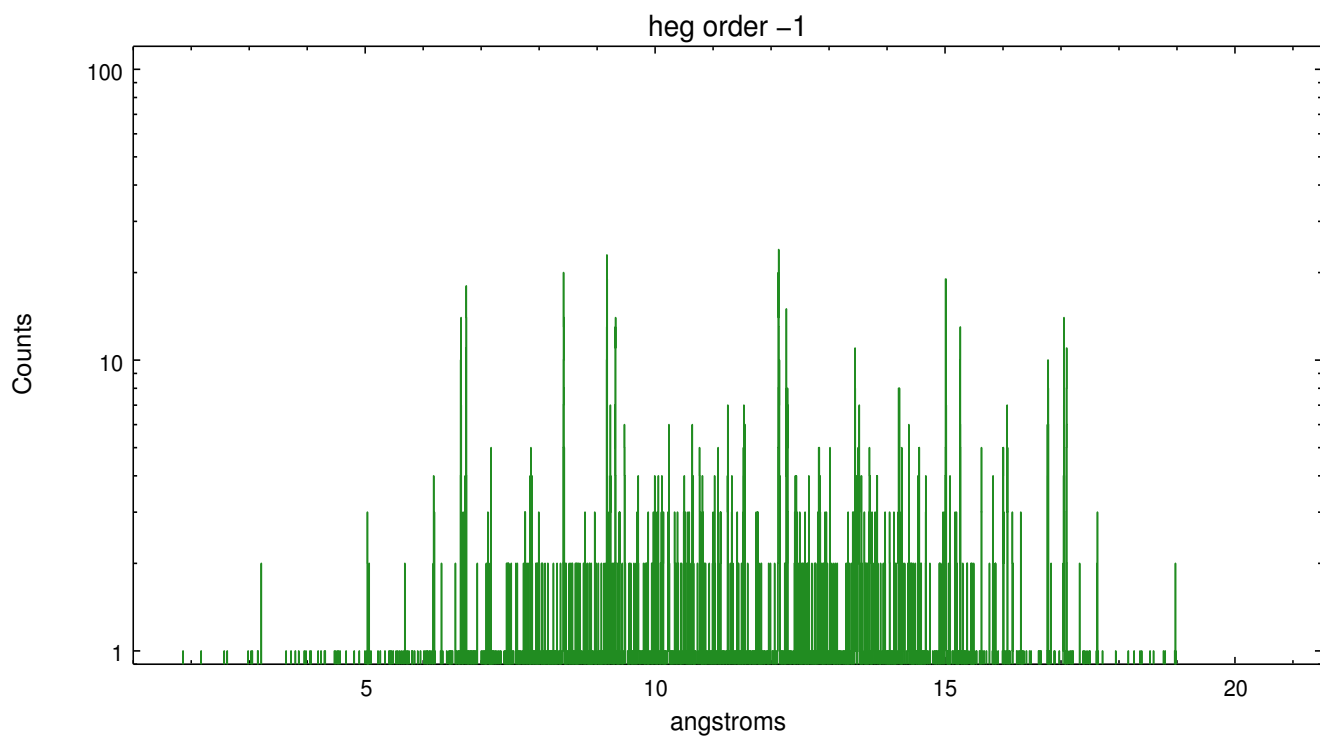
Spot Image HEG



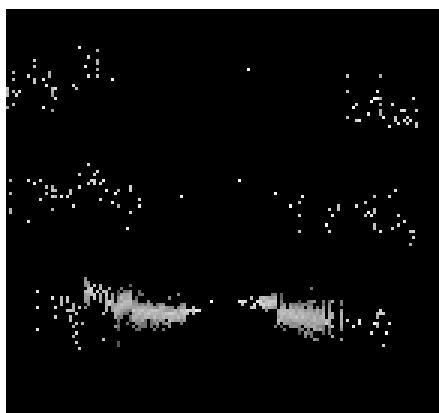
Full Detector HEG

	order	order	order	order	order	order	order
	-3	-2	-1	0	1	2	3
Events	103	241	3590	1440	2743	116	74

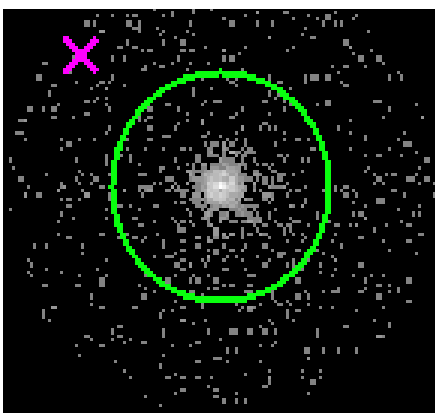




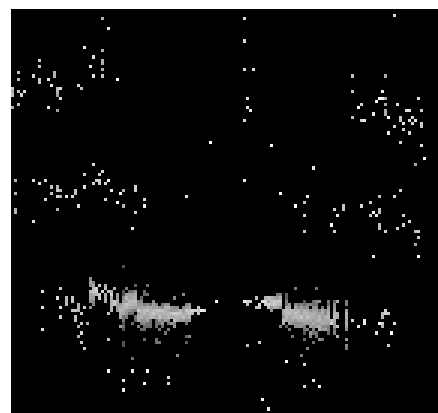
3.2 MEG Arm



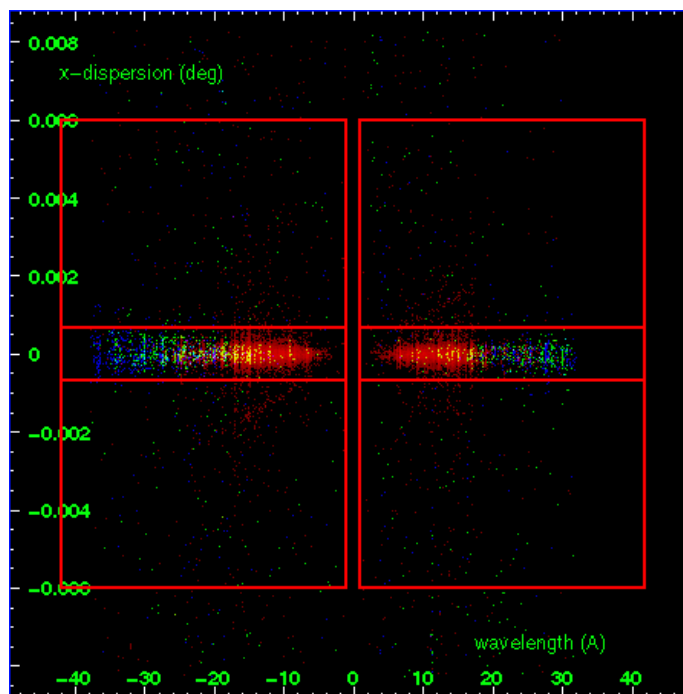
MEG Order Sort 123



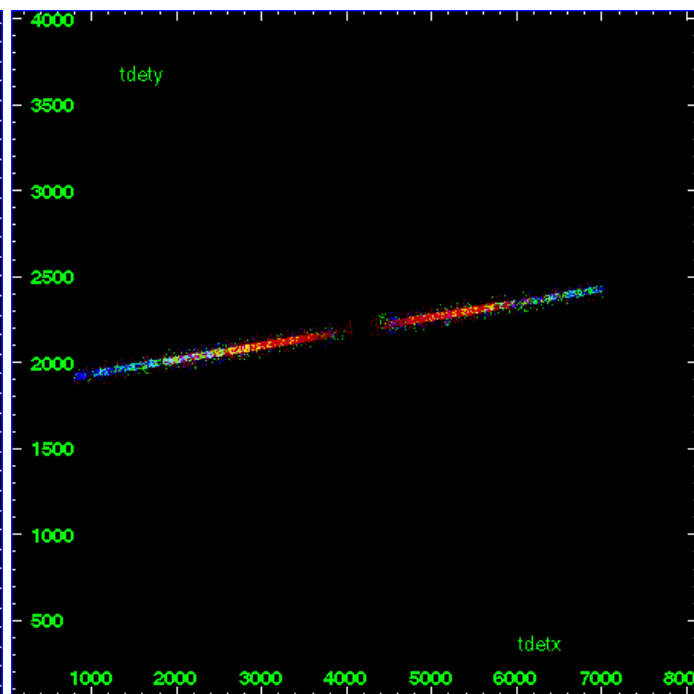
MEG Zero Order



MEG Order Sort ALL

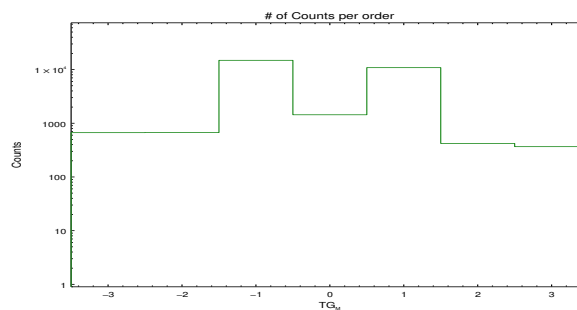


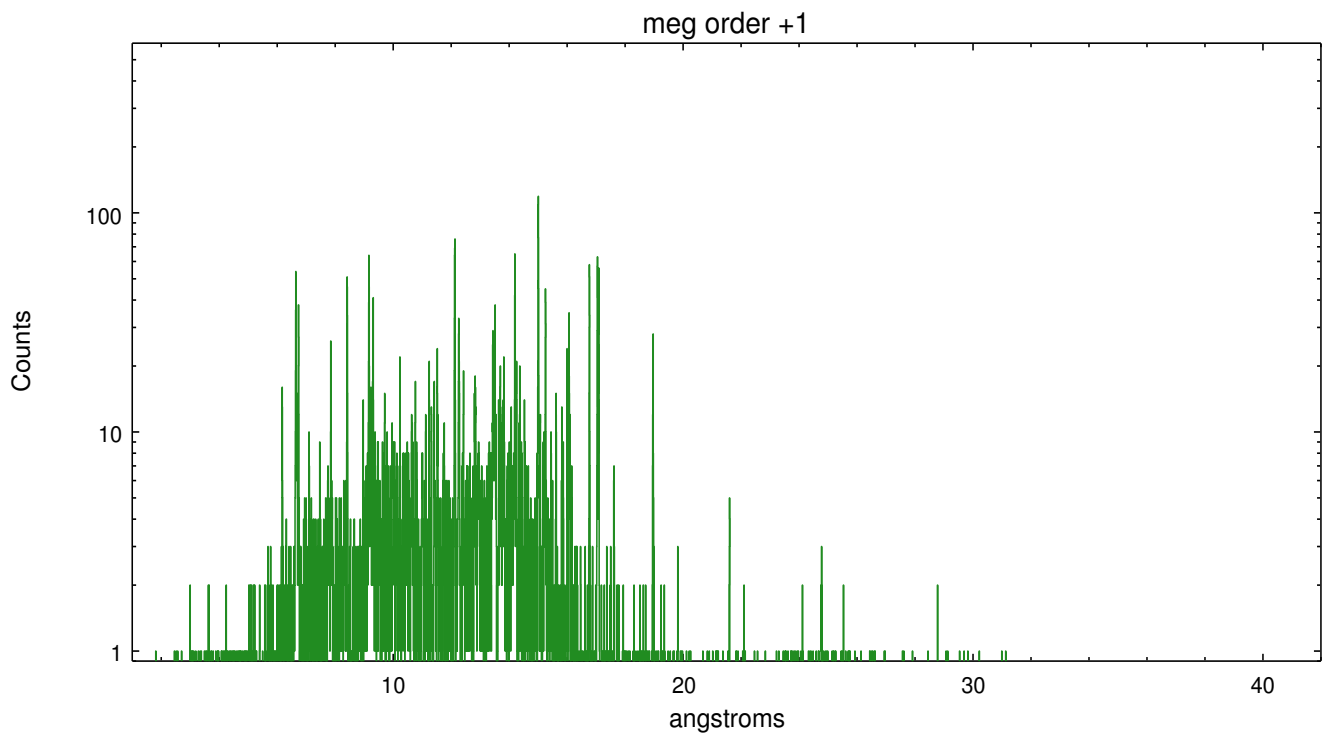
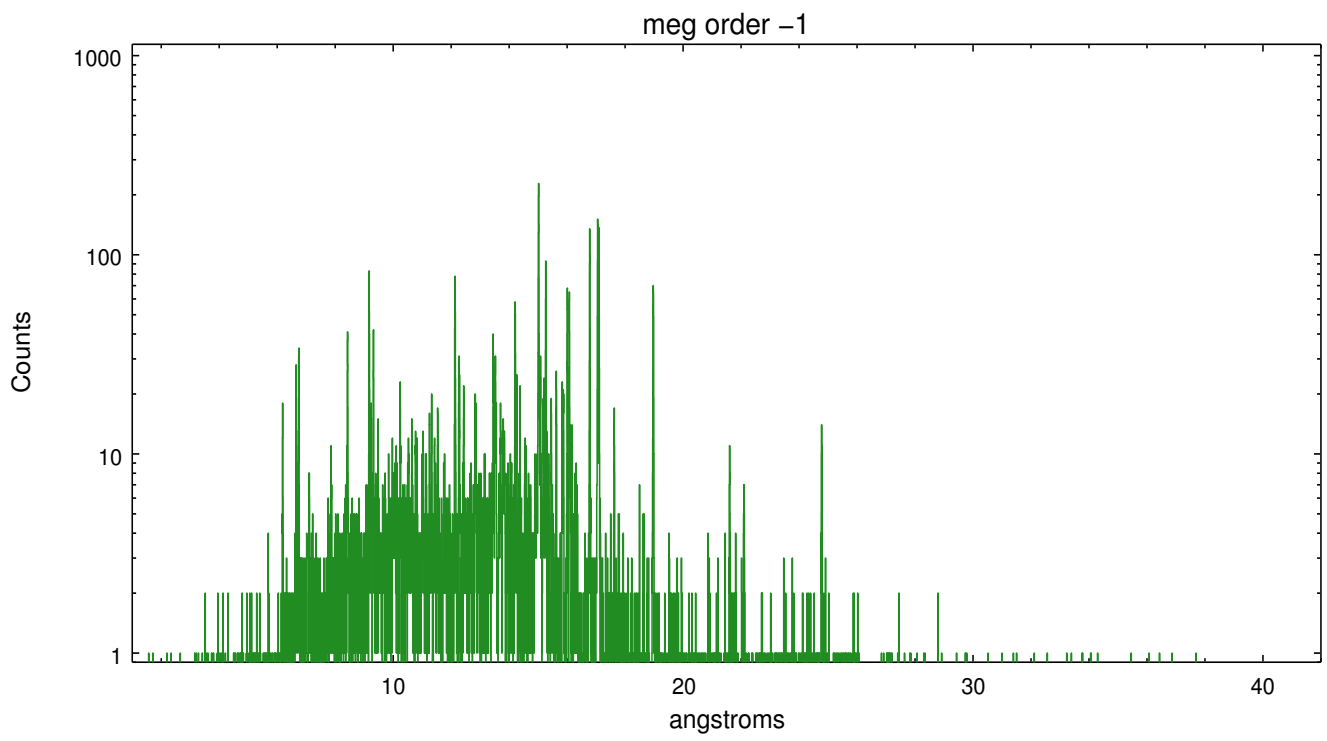
Spot Image MEG



Full Detector MEG

	order -3	order -2	order -1	order 0	order 1	order 2	order 3
Events	669	671	14854	1440	10864	421	367





A Summary

A.1 Status

V&V Scientist	David Huenemoerder
V&V Date (YYYY-MM-DD)	2010.03.26
V&V Edition	1
V&V Disposition and Status	OK
V&V Charge Time	14.755

A.2 Comments