

V&V Reference Report

L2 ASCDS Version : 8.4.5

Observation 13795 - L2 Version 2
Chandra X-Ray Center

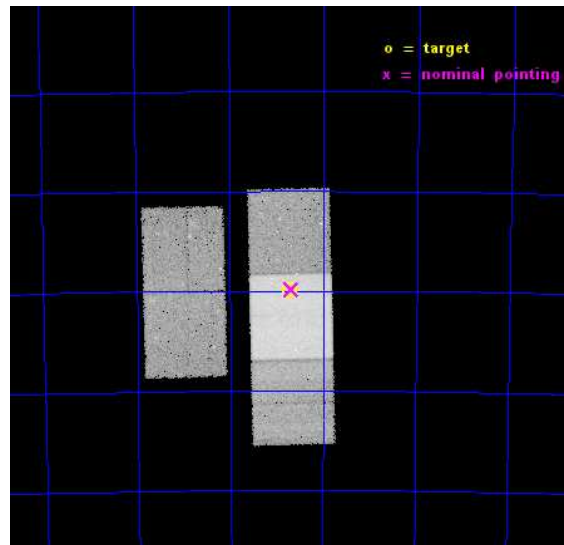
L2 Processing Date : Nov 27 2014

Contents

1	Front	2
2	OBI	3
2.1	OBI	3
2.1.1	Images	3
2.1.2	Bias	3
2.1.3	Parameters	4
2.1.4	Events	4
2.2	Compared Parameters	5
2.3	Aspect	6
2.4	Star Slots	9
2.4.1	Slot 3	9
2.4.2	Slot 4	10
2.4.3	Slot 5	11
2.4.4	Slot 6	12
2.4.5	Slot 7	13
2.5	FID Slots	14
2.5.1	Slot 0	14
2.5.2	Slot 1	15
2.5.3	Slot 2	16
A	Summary	17
A.1	Status	17
A.2	Comments	17

1 Front

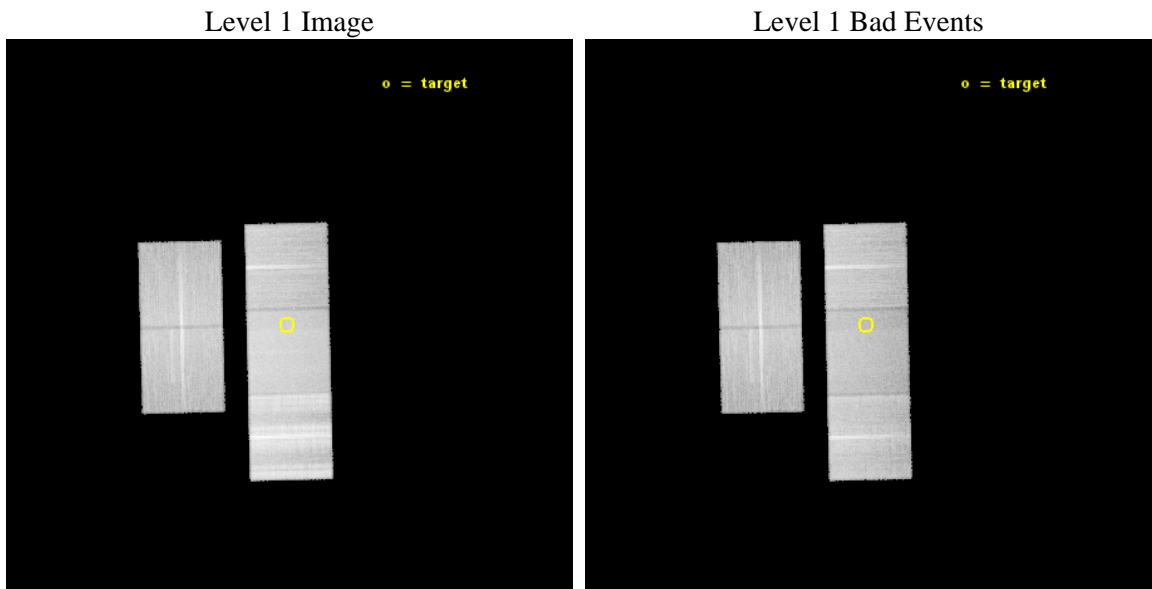
seq_num	501627	Sequence number
obs_id	13795	Observation id
title	The Astrophysics of the Most Energetic Gamma-Ray Bursts	Proposal t
observer	Dr. Andrew Fruchter	Principal investigator
object	GRB 120711A	Source name
dtcycle	0	
cycle	P	events from which exps? Prim/Second/Both
ra_targ	94.6785	Observer's specified target RA [deg]
dec_targ	-70.999111	Observer's specified target Dec [deg]
ra_nom	94.670771375627	Nominal RA [deg]
dec_nom	-70.997433120181	Nominal Dec [deg]
roll_nom	88.649315446529	Nominal Roll [deg]
revision	2	Processing version of data
ontime	41065.700315833	Sum of GTIs [s]
livetime	40529.146709078	Livetime [s]
ontime2	41065.700315833	Sum of GTIs [s]
ontime3	41065.700315833	Sum of GTIs [s]
ontime6	41065.700315833	Sum of GTIs [s]
ontime7	41065.700315833	Sum of GTIs [s]
ontime8	41062.559295654	Sum of GTIs [s]
l2events	235017	Number of level 2 events



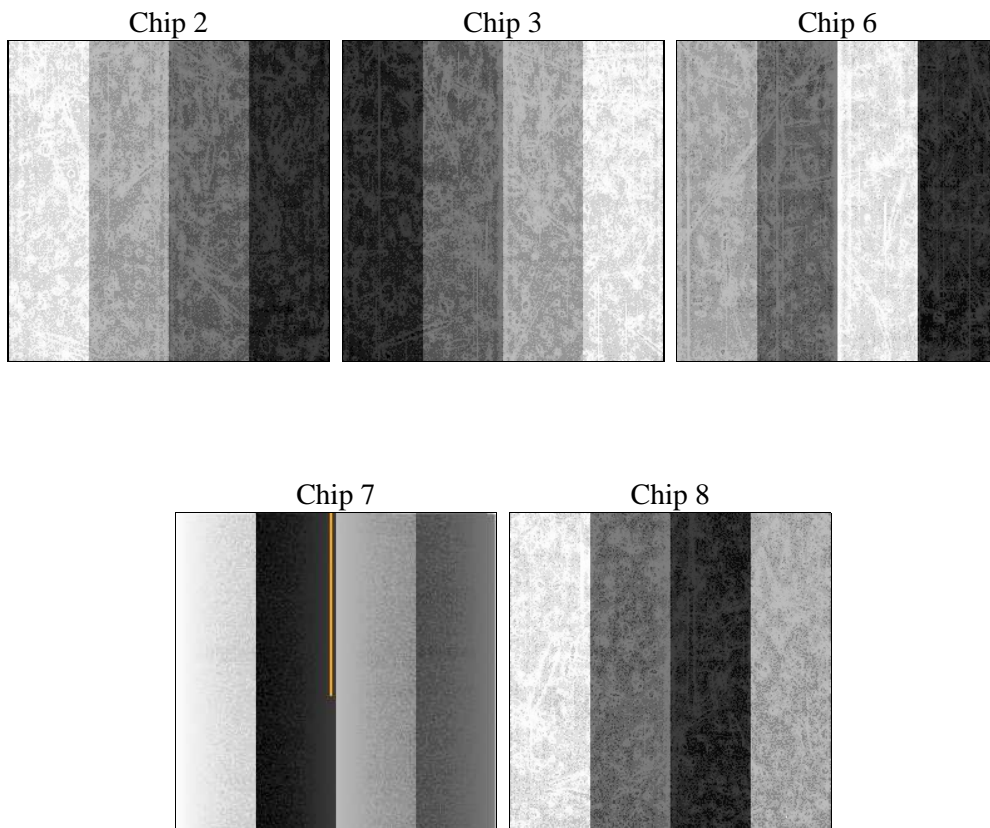
2 OBI

2.1 OBI

2.1.1 Images



2.1.2 Bias



2.1.3 Parameters

obi_num	0	Obi number	sched_exp_time	41000.000000	[s] Scheduled observation exposure time
ascdsver	10.3	Processing system revision	ontime	41065.700315833	Sum of GTIs [s]
caldsver	4.6.4	 	ontime2	41065.700315833	Sum of GTIs [s]
date	2014-11-27T16:44:55	Date and time of file creation	ontime3	41065.700315833	Sum of GTIs [s]
revision	2	Processing version of data	ontime6	41065.700315833	Sum of GTIs [s]
			ontime7	41065.700315833	Sum of GTIs [s]
			ontime8	41062.559295654	Sum of GTIs [s]
			l1events	1410176	Number of level 1 events

2.1.4 Events

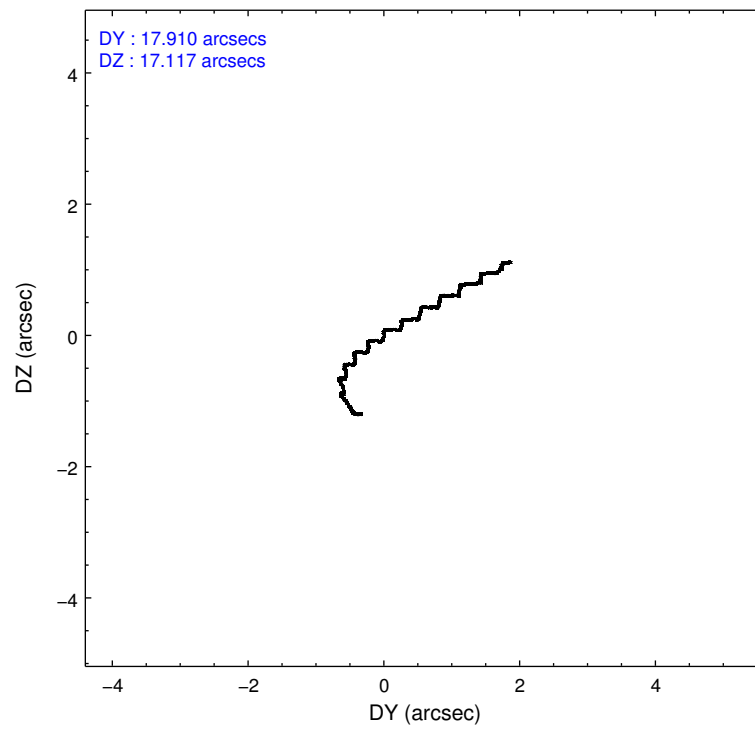
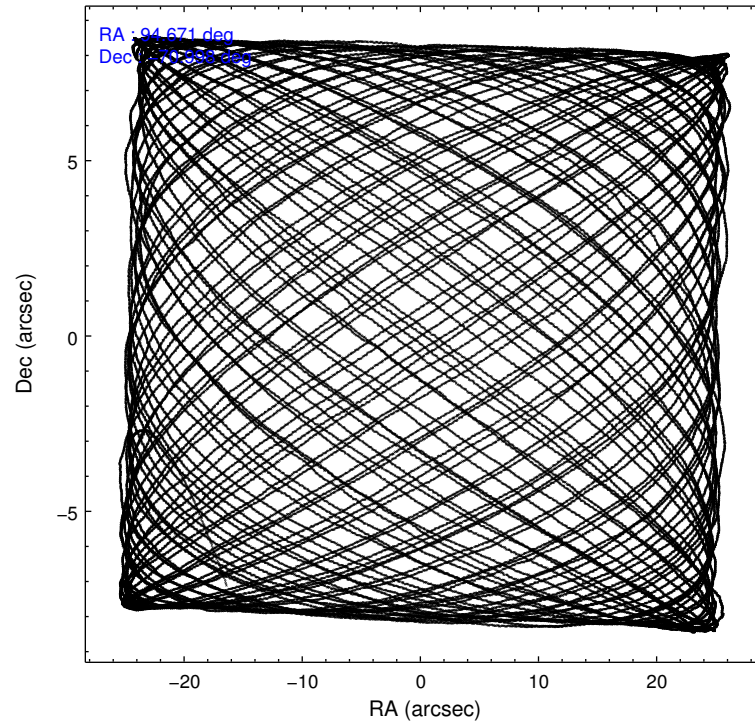
	ccd 2	ccd 3	ccd 6	ccd 7	ccd 8
level 1 events	226384	220972	238604	300861	423355
rejected events	195758	195466	207877	165366	226012
rejected %	86%	88%	87%	54%	53%

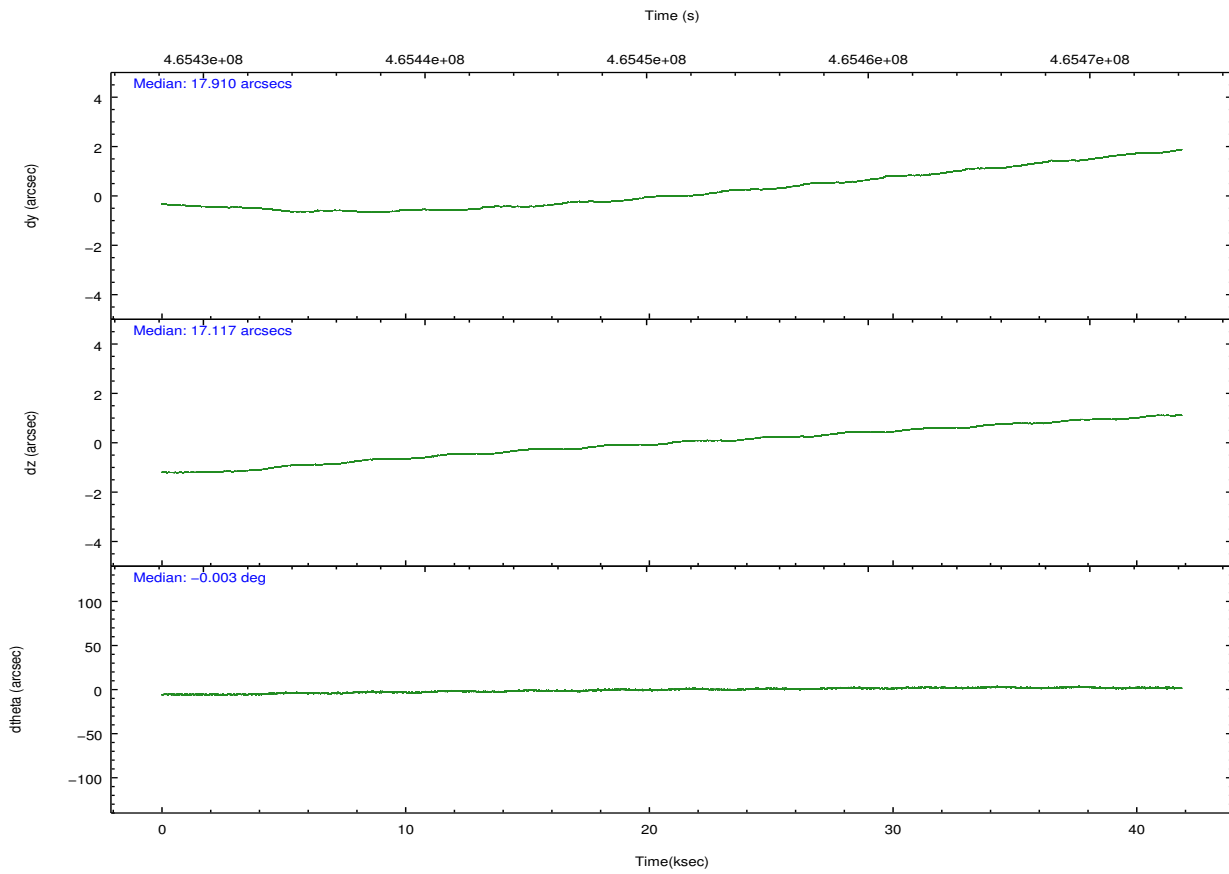
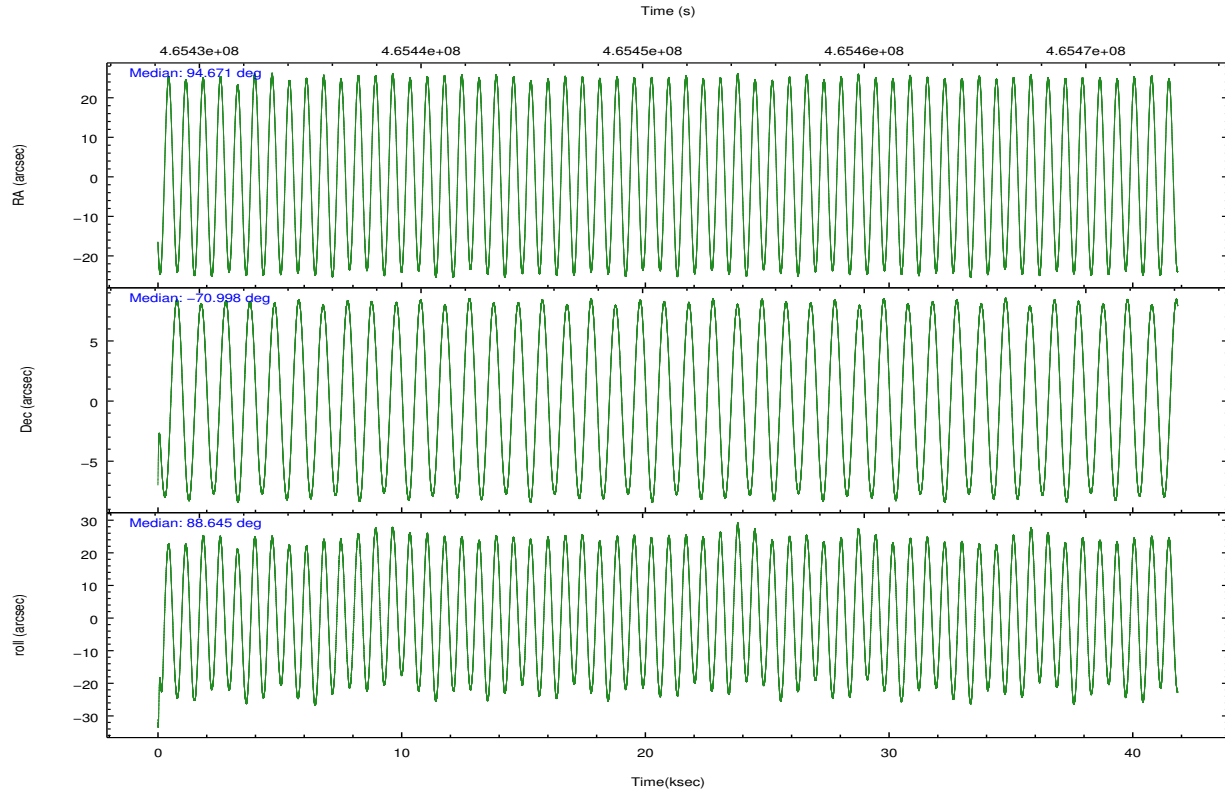
	ccd 2	ccd 3	ccd 6	ccd 7	ccd 8
grade 0 events	12865	9777	12693	12721	74222
	5%	4%	5%	4%	17%
grade 1 events	155	153	126	446	663
	0%	0%	0%	0%	0%
grade 2 events	7086	5605	6676	28892	25362
	3%	2%	2%	9%	5%
grade 3 events	2676	2676	2646	11514	34539
	1%	1%	1%	3%	8%
grade 4 events	3038	2495	2752	11624	32027
	1%	1%	1%	3%	7%
grade 5 events	9179	10893	11257	30466	16990
	4%	4%	4%	10%	4%
grade 6 events	4963	4956	5960	70753	31199
	2%	2%	2%	23%	7%
grade 7 events	186422	184417	196494	134445	208353
	82%	83%	82%	44%	49%

2.2 Compared Parameters

Parameter	Planned	Actual	Parameter	Planned	Actual
Instrument	ACIS	ACIS	Obspar format version number	7	7
Detector	ACIS-23678	ACIS-23678	Obspar file type	PREDICTED	ACTUAL
Grating	NONE	NONE	Obspar update status	NONE	UPDATED
Data mode	FAINT	FAINT	Number of optional ACIS chips dropped	0	0
Observation mode	POINTING	POINTING	On-chip summing requested	N	N
[deg] Pointing RA	94.712104	94.67077137562681	Subarray requested	NONE	NONE
[deg] Pointing Dec	-71.021235	-70.99743312018106	Alternating exposures requested	N	N
[deg] Pointing Roll	88.531781	88.64931544652919	[s] Primary exposure time	0.000000	3.1
[mm] SIM focus pos	-0.684267	-0.6828225247311905			
[mm] SIM defocus	0	0.001444936568705701			
[mm] SIM translation stage pos	-190.132523	-190.1400660498719			
[mm] SIM translation stage offset	0	0.00754346686406393			
[s] Observation start time (MET)	465431051.184000	465429340.45096			
Observation start date	2012-09-30T22:23:04	2012-09-30T21:55:40			
[s] Observation end time (MET)	465472051.184000	465472872.71579			
Observation end date	2012-10-01T09:46:24	2012-10-01T10:01:12			
Read mode	TIMED	TIMED			

2.3 Aspect





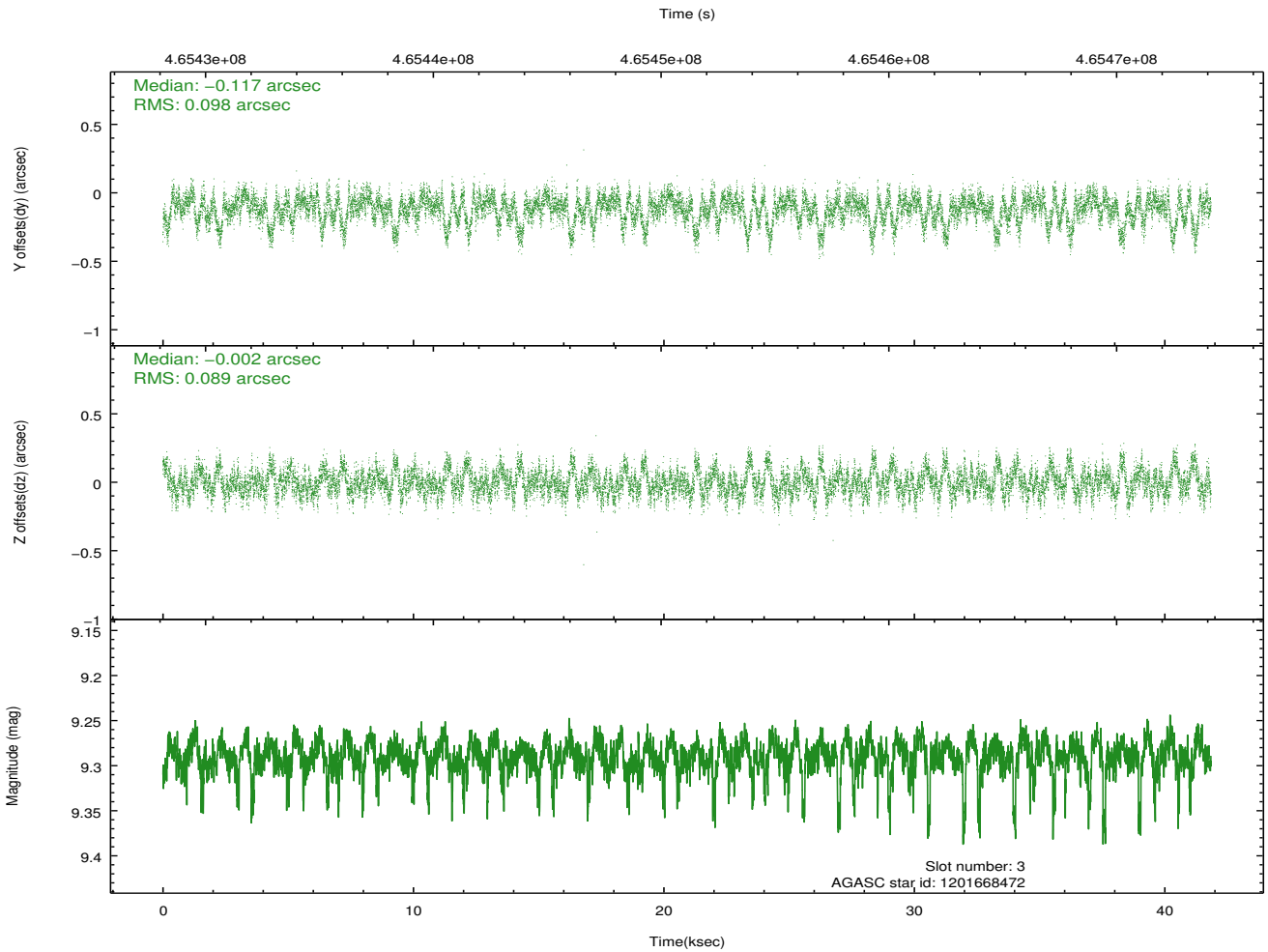
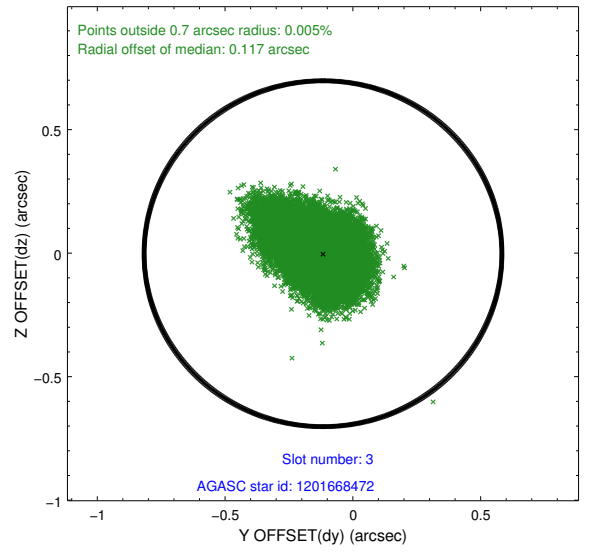
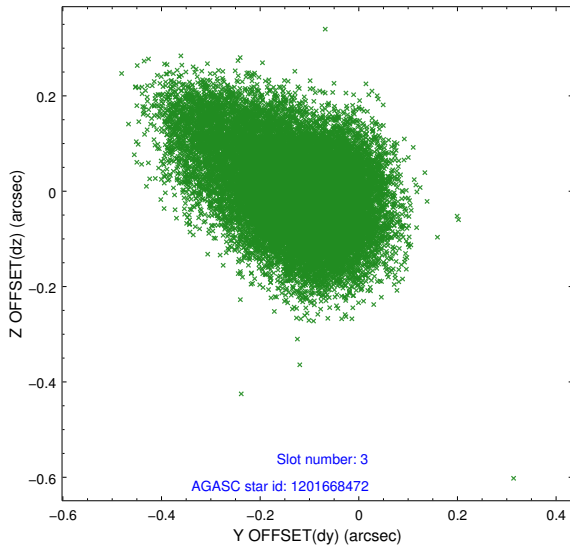
Slot Statistics

slot	status	used	id	mag	n_pts	med_dy	med_dz	dr1	dr2	ra	dec	mean_y	mean_z
0	FID		ACIS-S-2	6.93	10206	-0.094	-0.030	0.027	0.036	0.000000	0.000000	-771.30	-1738.54
1	FID		ACIS-S-4	7.01	10207	0.245	0.051	0.018	0.031	0.000000	0.000000	2142.33	169.99
2	FID		ACIS-S-5	7.04	10206	-0.185	-0.011	0.026	0.041	0.000000	0.000000	-1824.21	163.63
3	GUIDE	used	1201668472	9.29	20368	-0.117	-0.002	0.136	0.242	95.162780	-70.551287	1703.44	-496.55
4	GUIDE	used	1201673112	9.00	20395	-0.033	-0.117	0.098	0.160	93.755729	-70.460525	1979.73	1202.71
5	GUIDE	used	1201677552	9.37	20389	-0.416	-0.221	0.104	0.166	93.710140	-70.598114	1480.84	1235.85
6	GUIDE	used	1202196968	9.16	20404	0.371	0.357	0.127	0.193	94.954850	-71.380799	-1286.52	-311.70
7	GUIDE	used	1203896600	9.76	20385	0.205	-0.019	0.134	0.220	96.331520	-71.548408	-1873.94	-1893.78

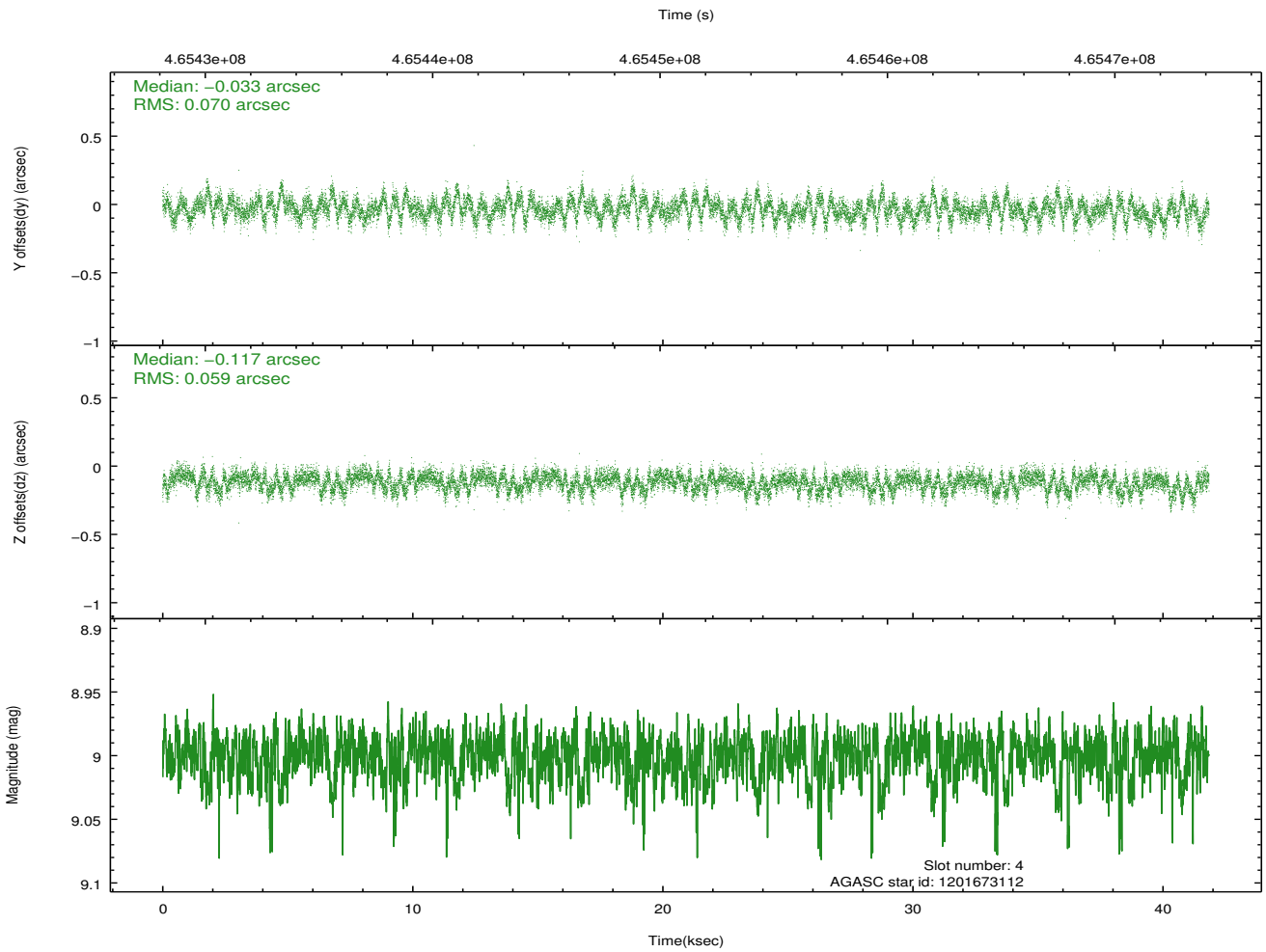
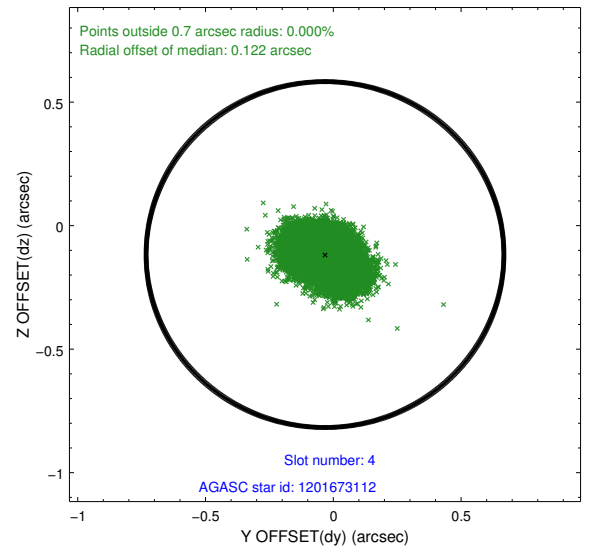
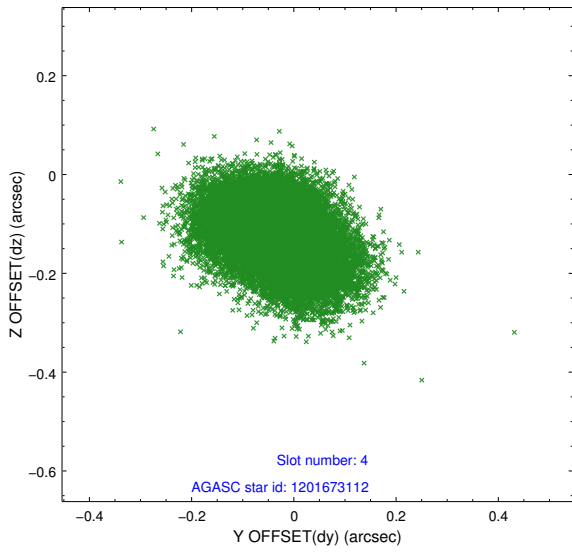
∞

2.4 Star Slots

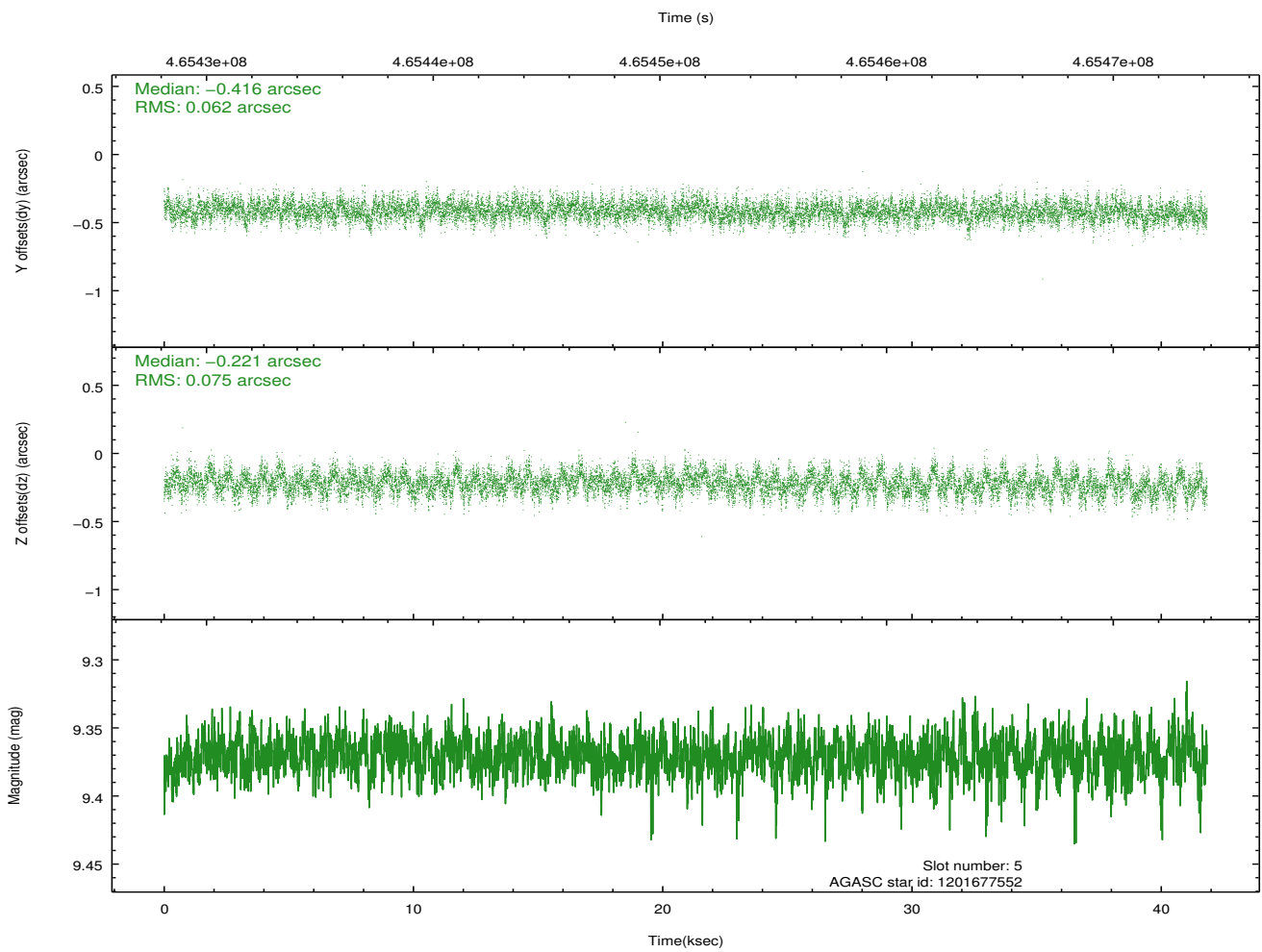
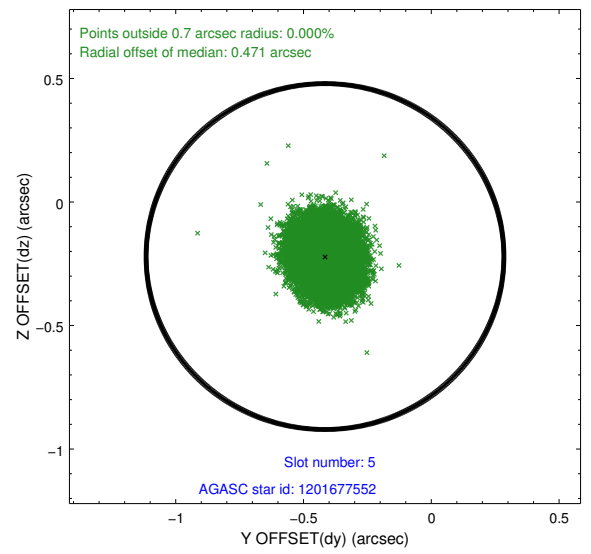
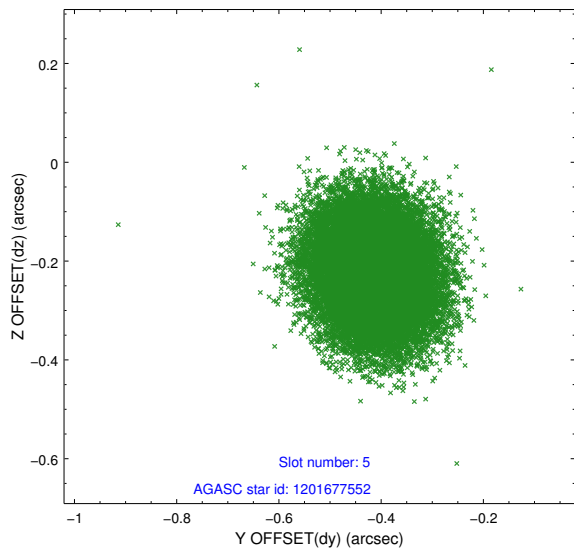
2.4.1 Slot 3



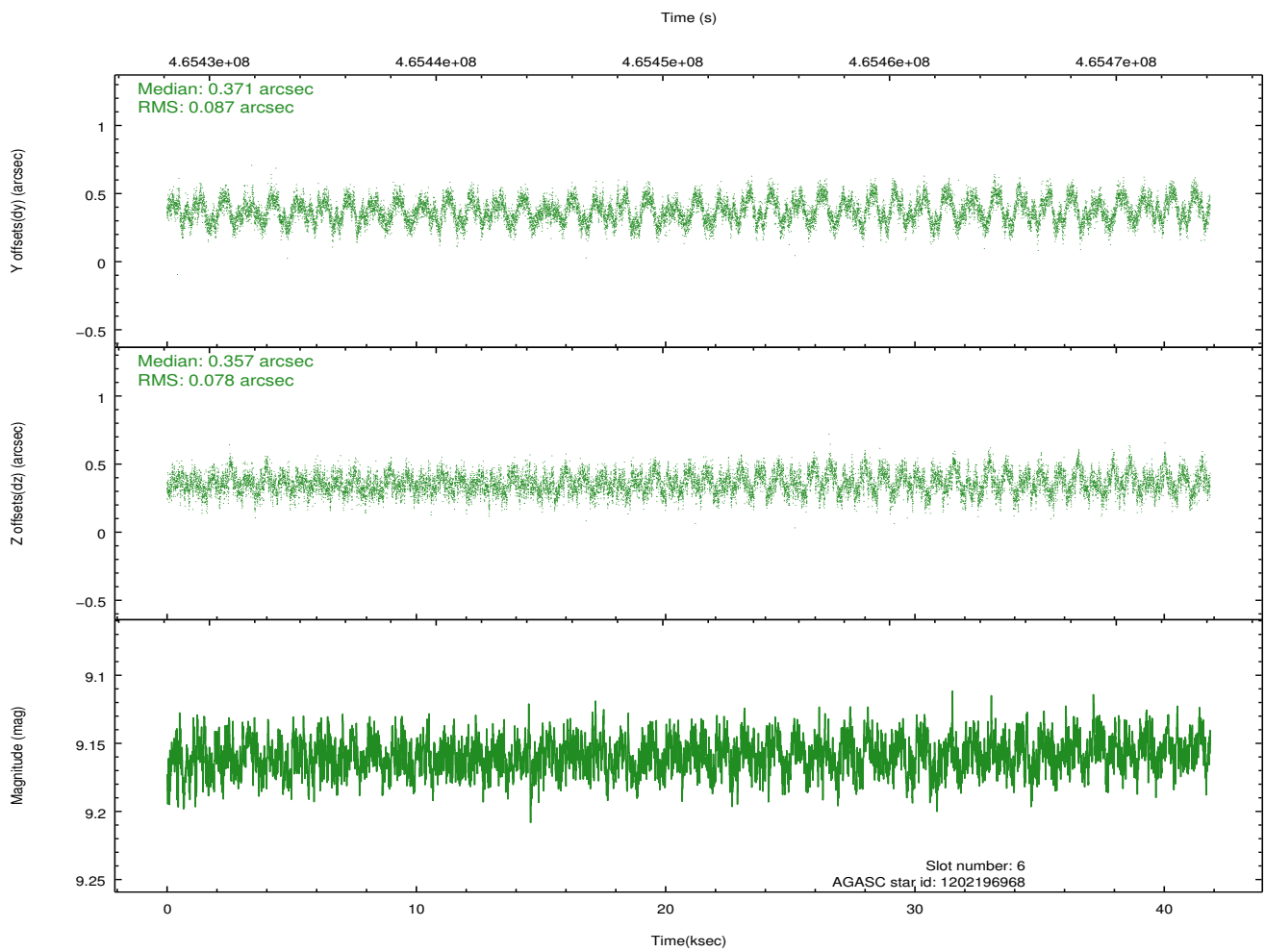
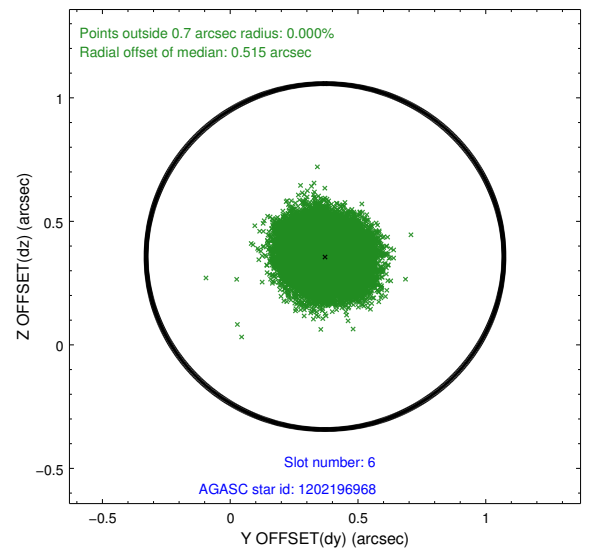
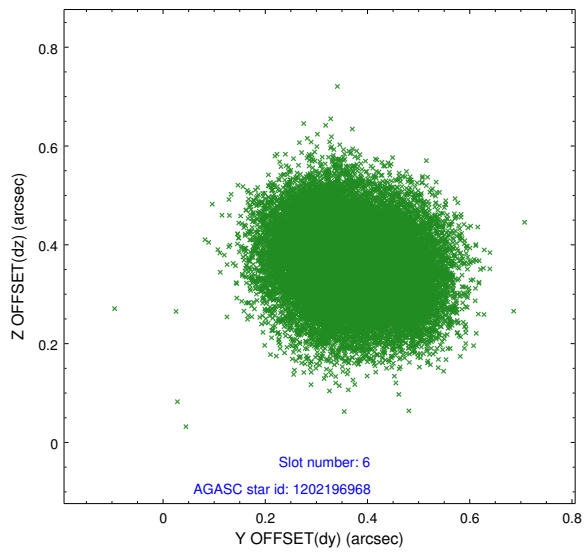
2.4.2 Slot 4



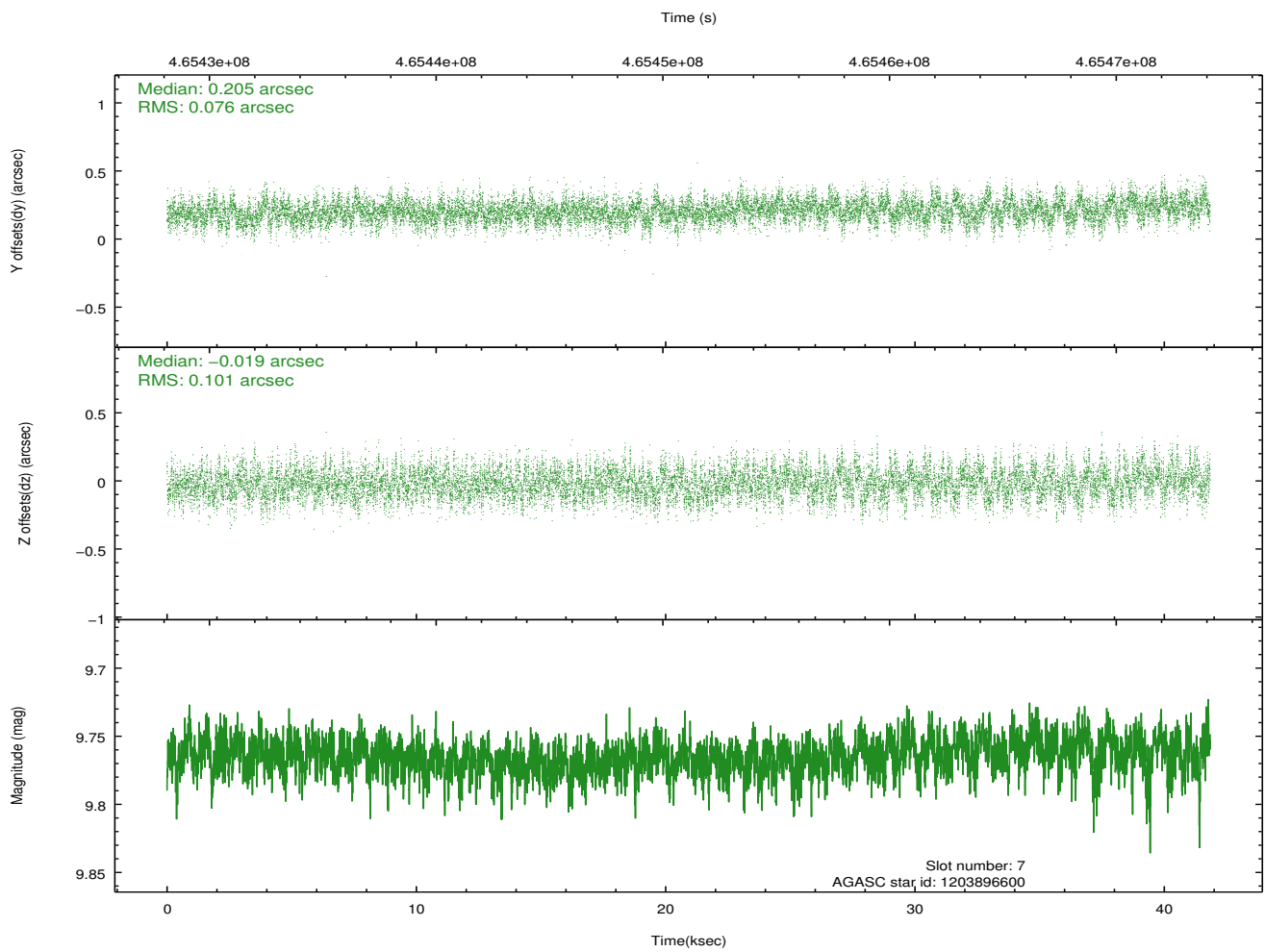
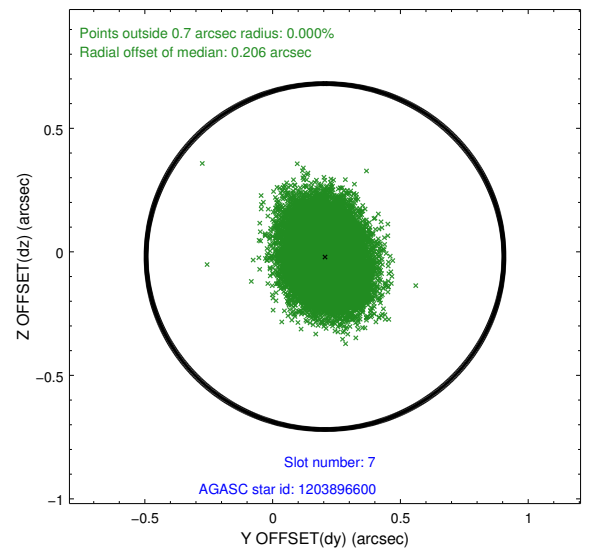
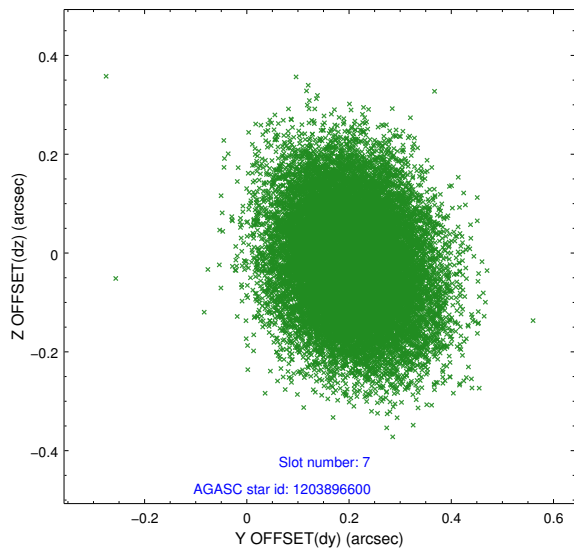
2.4.3 Slot 5



2.4.4 Slot 6

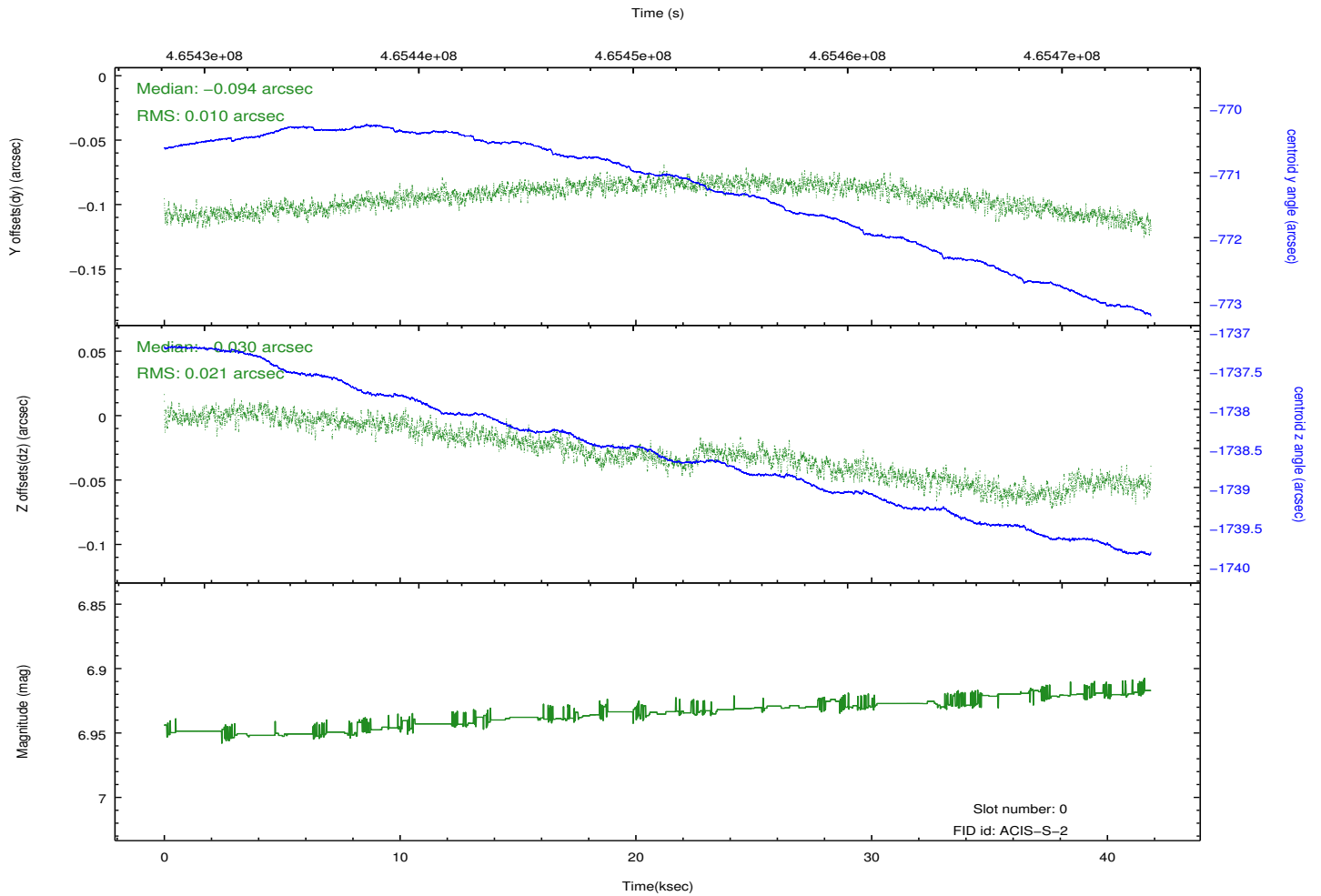
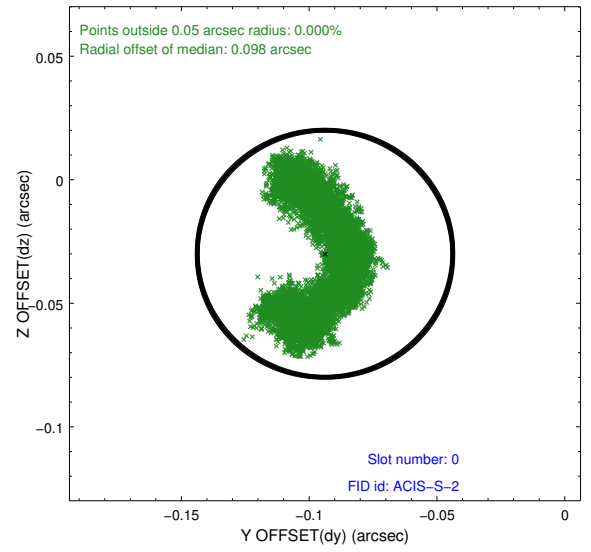
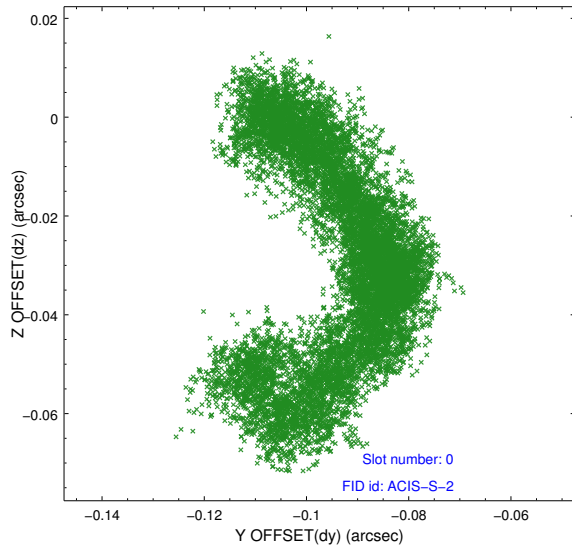


2.4.5 Slot 7

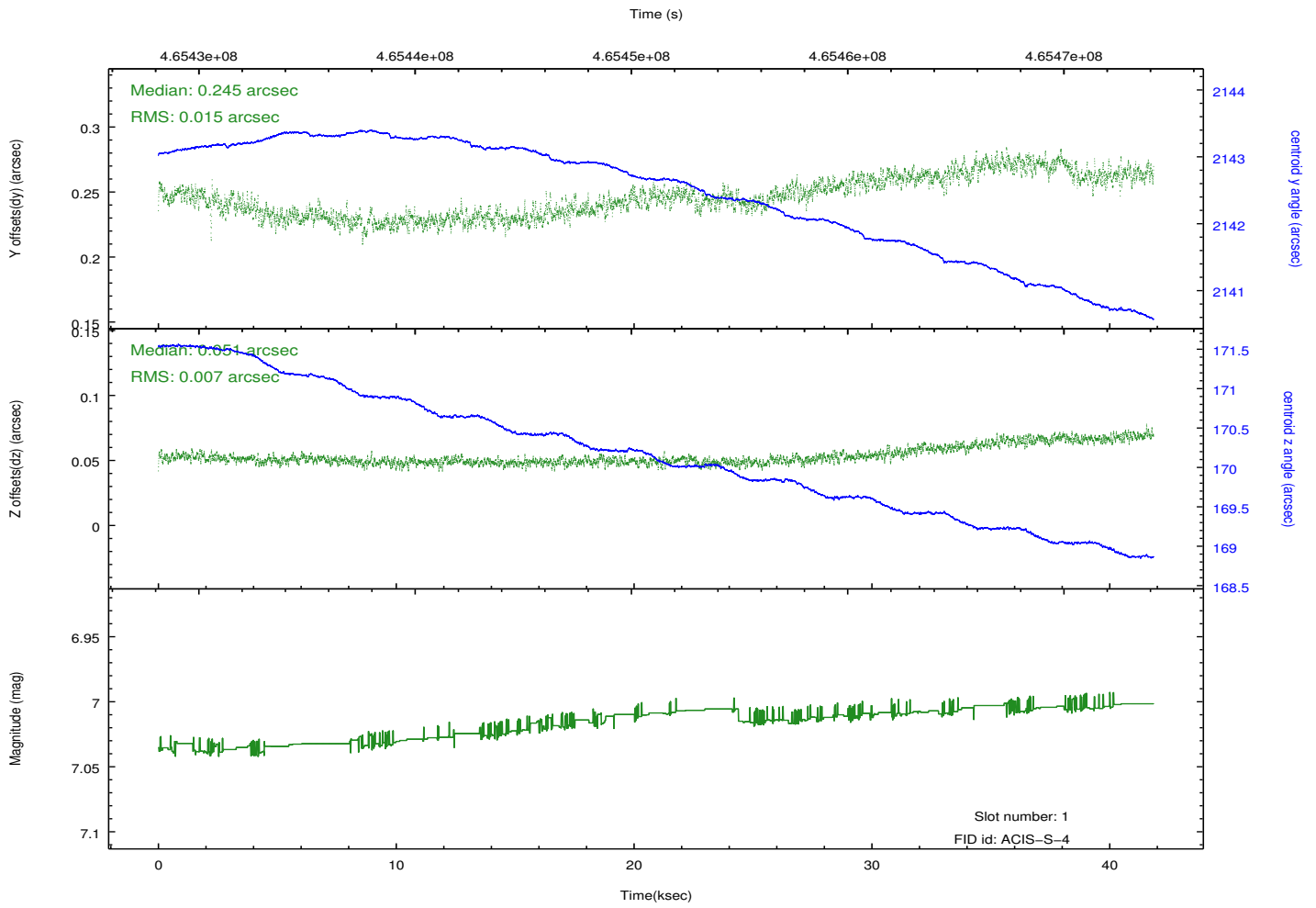
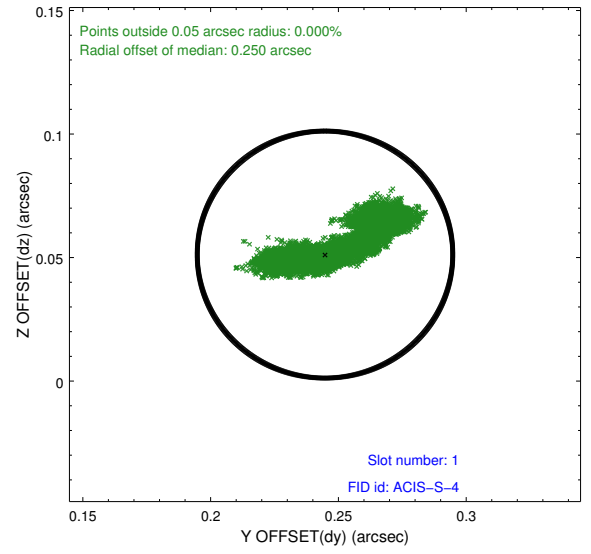
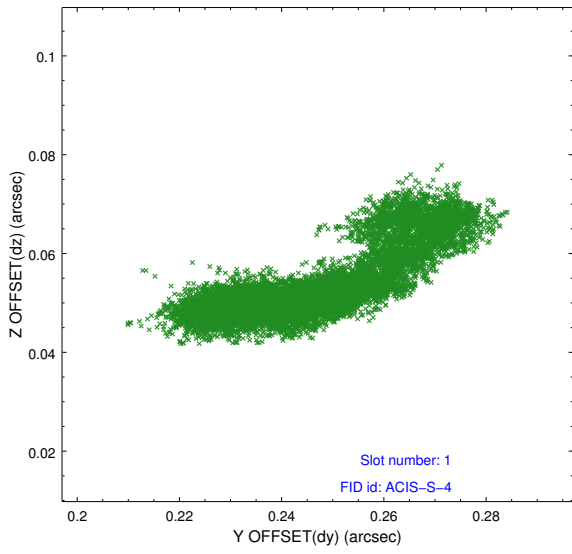


2.5 FID Slots

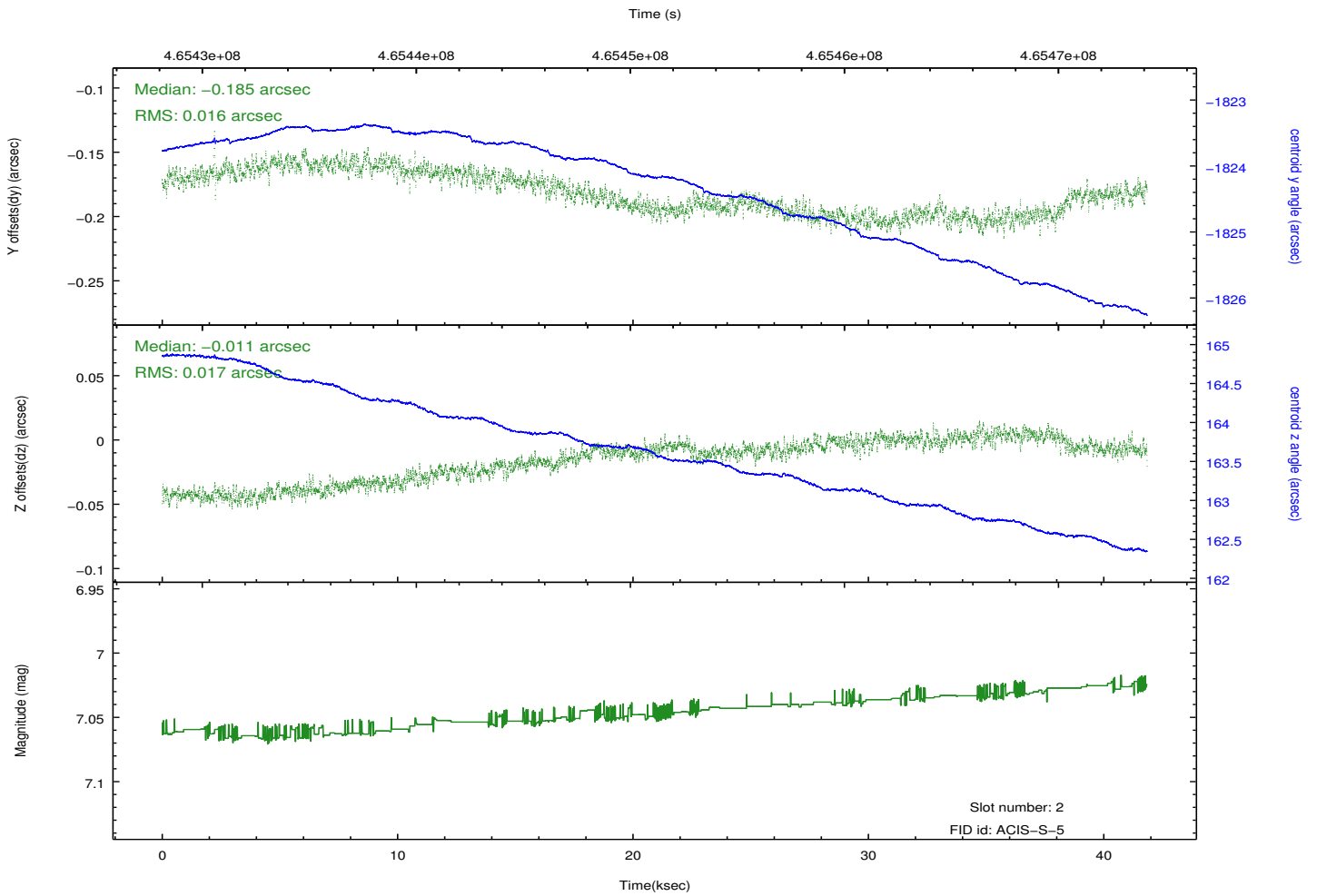
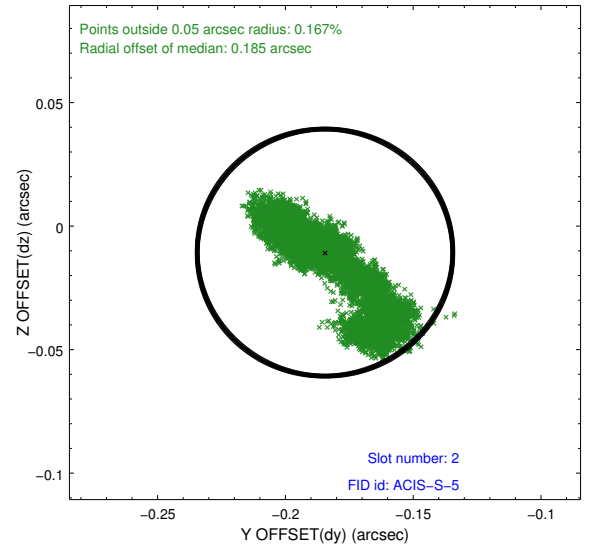
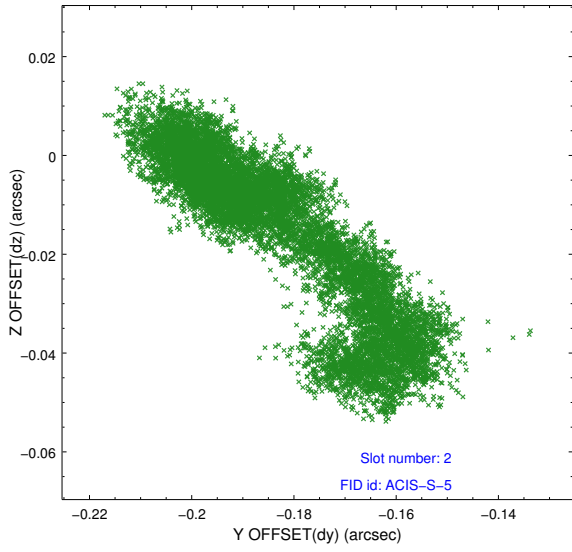
2.5.1 Slot 0



2.5.2 Slot 1



2.5.3 Slot 2



A Summary

A.1 Status

V&V Scientist	Beth Sundheim
V&V Date (YYYY-MM-DD)	2014.12.02
V&V Edition	1
V&V Disposition and Status	OK
V&V Charge Time	41.065700315833

A.2 Comments

Joint proposal with HST.

These data have been reprocessed with new aspect alignment calibration files that correct small mean offsets (up to 0.4 arcsecs) and improve overall astrometric accuracy. The new calibration was determined using data from the time period being reprocessed and was performed using cross-correlation of X-ray sources with radio and optical counterparts.