

V&V Reference Report

L2 ASCDS Version : 8.4.3

Observation 13905 - L2 Version 2
Chandra X-Ray Center

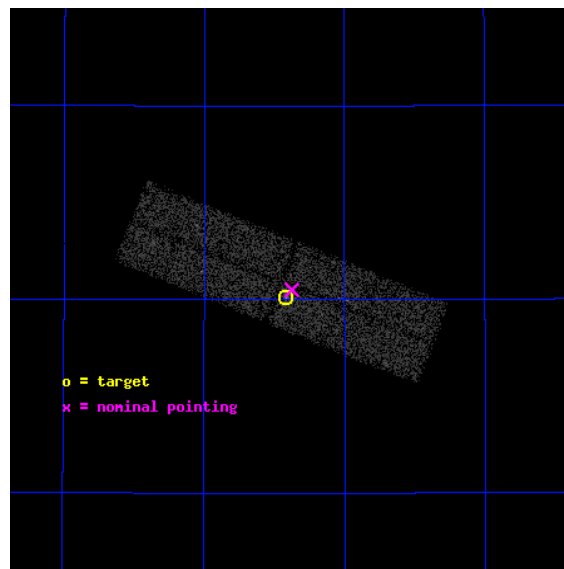
L2 Processing Date : Feb 27 2012

Contents

1	Front	2
2	OBI	3
2.1	OBI	3
2.1.1	Images	3
2.1.2	Bias	3
2.1.3	Parameters	4
2.1.4	Events	4
2.2	Compared Parameters	5
2.3	Aspect	6
2.4	Star Slots	9
2.4.1	Slot 3	9
2.4.2	Slot 4	10
2.4.3	Slot 5	11
2.4.4	Slot 6	12
2.4.5	Slot 7	13
2.5	FID Slots	14
2.5.1	Slot 0	14
2.5.2	Slot 1	15
2.5.3	Slot 2	16
A	Summary	17
A.1	Status	17
A.2	Comments	17

1 Front

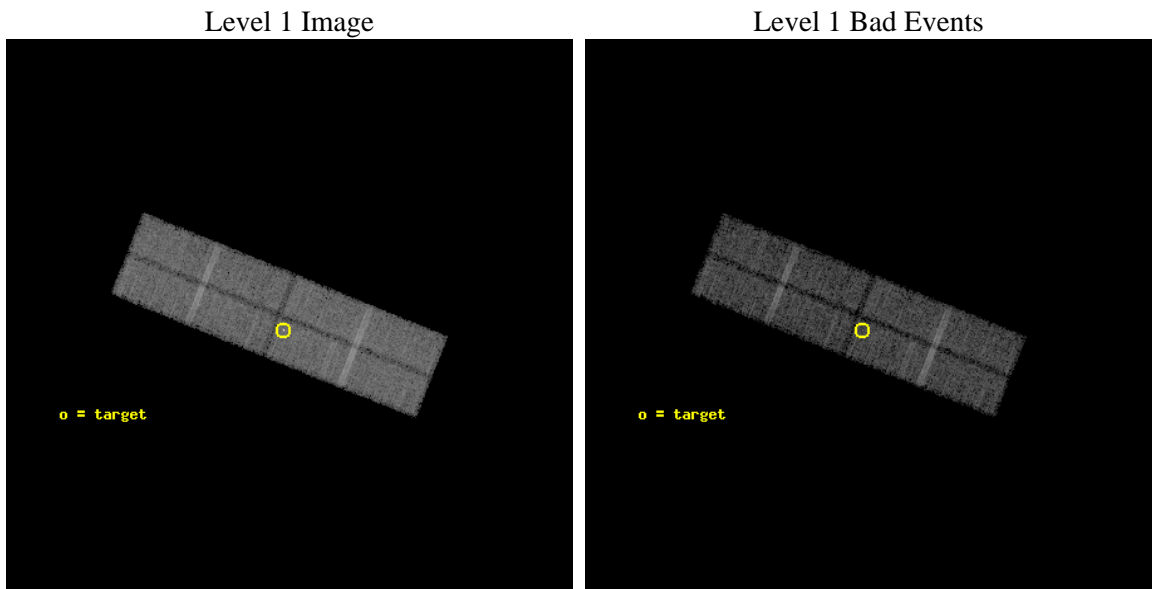
seq_num	702630	Sequence number
obs_id	13905	Observation id
title	Quasar jet knots: an under-exploited tool for jet physics	Proposal
observer	Prof Diana Worrall	Principal investigator
object	B0800+608	Source name
dtcycle	0	
cycle	P	events from which exps? Prim/Second/Both
ra_targ	121.104167	Observer's specified target RA [deg]
dec_targ	60.668917	Observer's specified target Dec [deg]
ra_nom	121.09371191168	Nominal RA [deg]
dec_nom	60.675167452288	Nominal Dec [deg]
roll_nom	111.95701984601	Nominal Roll [deg]
revision	2	Processing version of data
ontime	25073.0	Sum of GTIs [s]
livetime	24084.569276877	Livetime [s]
ontime0	25073.0	Sum of GTIs [s]
ontime1	25073.0	Sum of GTIs [s]
ontime2	25073.0	Sum of GTIs [s]
ontime3	25073.0	Sum of GTIs [s]
l2events	17674	Number of level 2 events



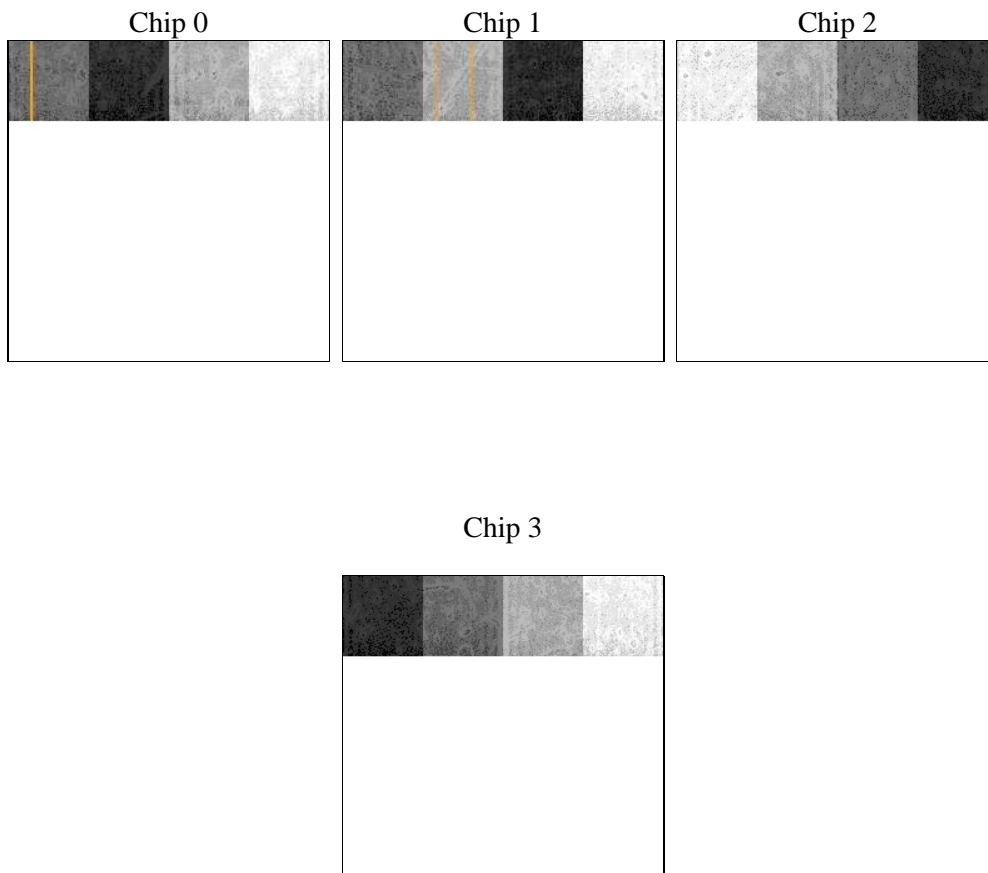
2 OBI

2.1 OBI

2.1.1 Images



2.1.2 Bias



2.1.3 Parameters

obi_num	2	Obi number	sched_exp_time	25000.000000	[s] Scheduled observation exposure time
ascdsver	8.4.3	Processing system revision	ontime	25073.0	Sum of GTIs [s]
caldbver	4.4.8	 	ontime0	25073.0	Sum of GTIs [s]
date	2012-02-28T00:54:50	Date and time of file creation	ontime1	25073.0	Sum of GTIs [s]
revision	2	Processing version of data	ontime2	25073.0	Sum of GTIs [s]
			ontime3	25073.0	Sum of GTIs [s]
			l1events	174882	Number of level 1 events

2.1.4 Events

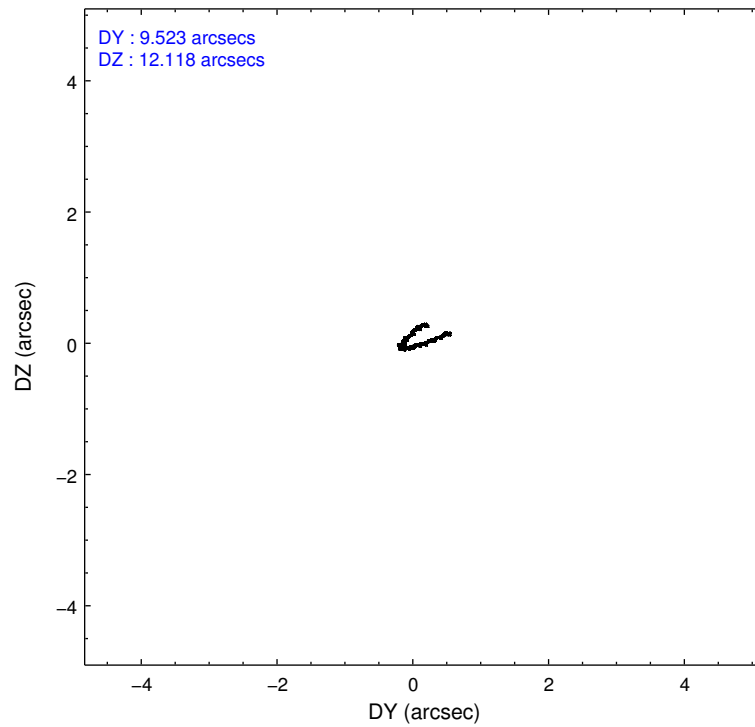
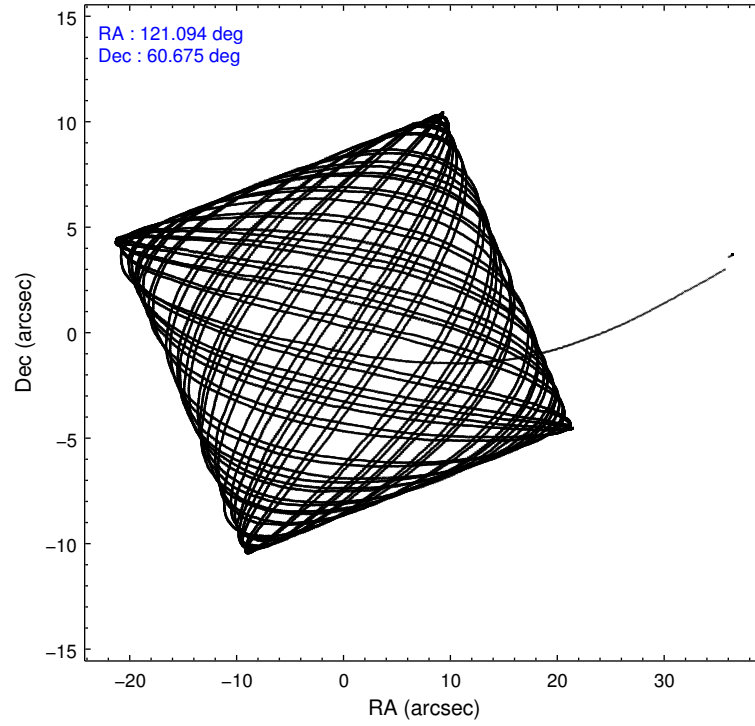
	ccd 0	ccd 1	ccd 2	ccd 3
level 1 events	40121	42424	44760	47577
rejected events	34913	37117	39923	40511
rejected %	87%	87%	89%	85%

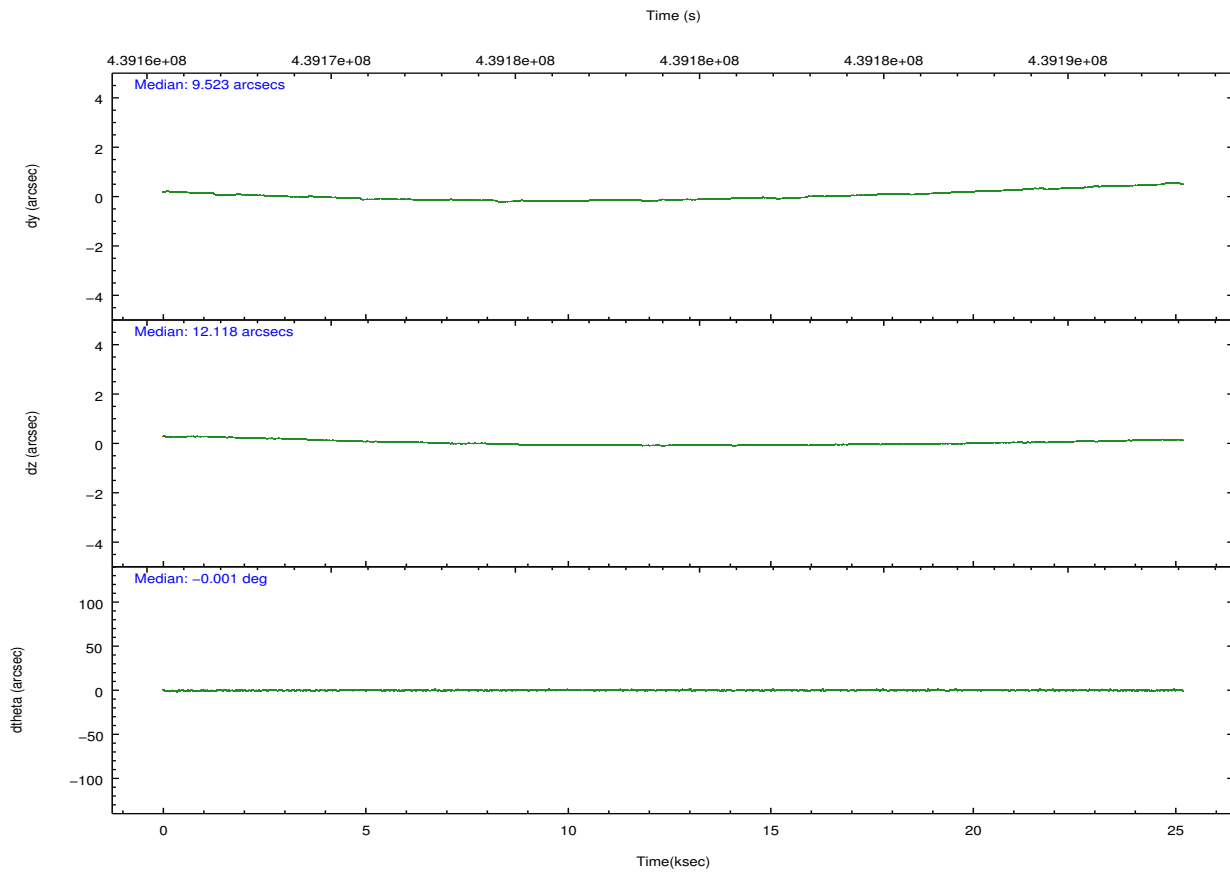
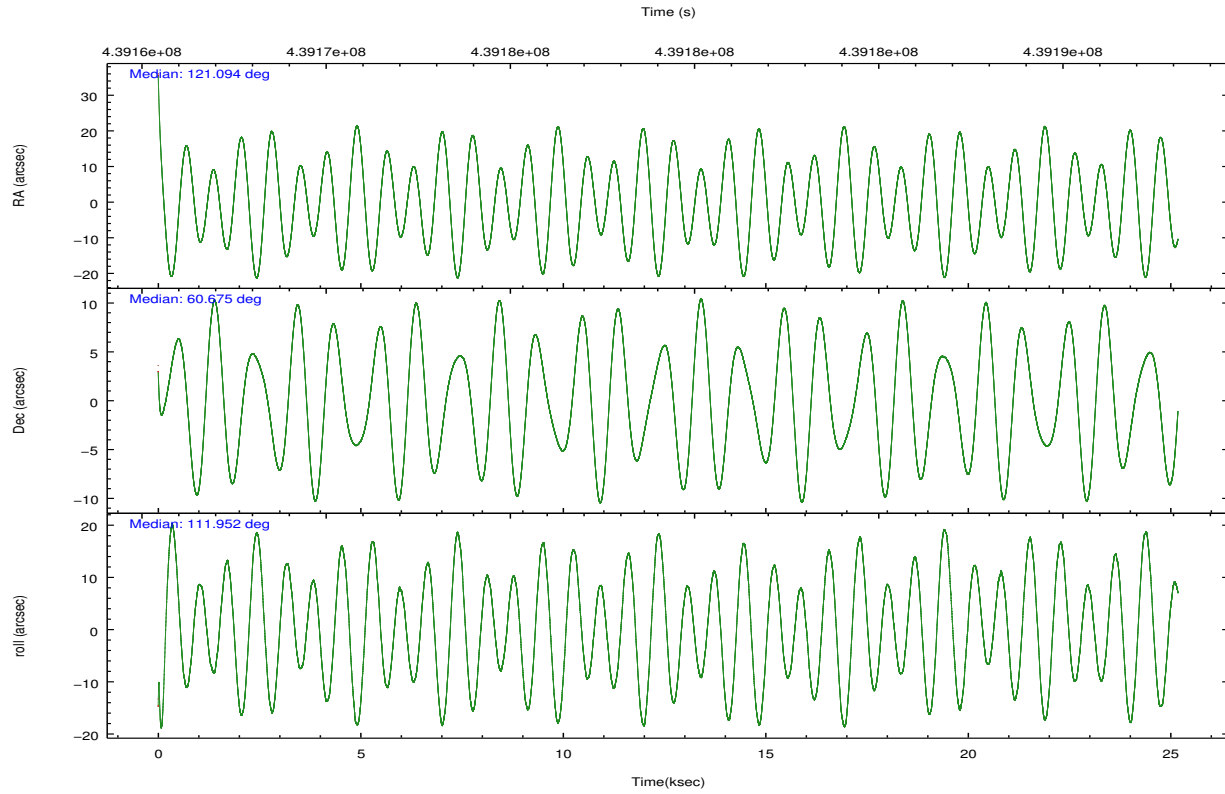
	ccd 0	ccd 1	ccd 2	ccd 3
grade 0 events	1552	1531	1579	3388
	3%	3%	3%	7%
grade 1 events	27	20	26	51
	0%	0%	0%	0%
grade 2 events	1137	1027	1008	1118
	2%	2%	2%	2%
grade 3 events	821	851	739	814
	2%	2%	1%	1%
grade 4 events	792	835	726	796
	1%	1%	1%	1%
grade 5 events	1743	1646	1570	1898
	4%	3%	3%	3%
grade 6 events	906	1067	785	950
	2%	2%	1%	1%
grade 7 events	33143	35447	38327	38562
	82%	83%	85%	81%

2.2 Compared Parameters

Parameter	Planned	Actual	Parameter	Planned	Actual
Instrument	ACIS	ACIS	Obspar format version number	7	7
Detector	ACIS-0123	ACIS-0123	Obspar file type	PREDICTED	ACTUAL
Grating	NONE	NONE	Obspar update status	NONE	UPDATED
Data mode	VFAINT	VFAINT	Number of optional ACIS chips dropped	0	0
Observation mode	POINTING	POINTING	On-chip summing requested	N	N
[deg] Pointing RA	121.138053	121.0937119116795	Subarray requested	CUSTOM	1/4
[deg] Pointing Dec	60.658315	60.67516745228756	Subarray start row	769	769
[deg] Pointing Roll	111.709662	111.957019846013	Subarray row count	256	256
[mm] SIM focus pos	-0.782348	-0.7809083437167272	Alternating exposures requested	N	N
[mm] SIM defocus	0	0.001439871863259334	[s] Primary exposure time	0.000000	1
[mm] SIM translation stage pos	-233.592463	-233.5874344608287			
[mm] SIM translation stage offset	0	-0.005018542100998502			
[s] Observation start time (MET)	439166864.184000	439166059.25875			
Observation start date	2011-12-01T22:46:38	2011-12-01T22:34:19			
[s] Observation end time (MET)	439191864.184000	439192604.19765			
Observation end date	2011-12-02T05:43:18	2011-12-02T05:56:44			
Read mode	TIMED	TIMED			

2.3 Aspect



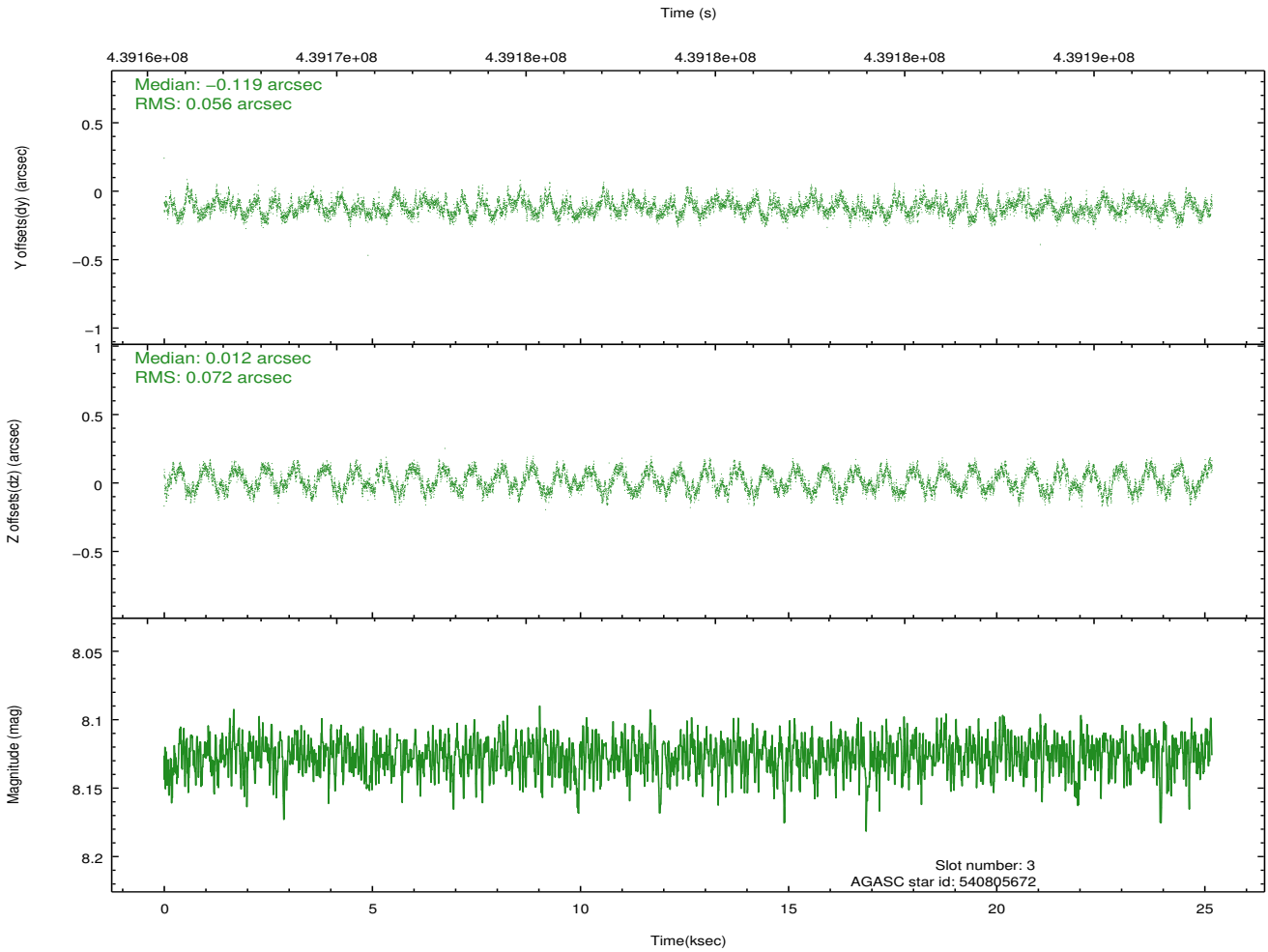
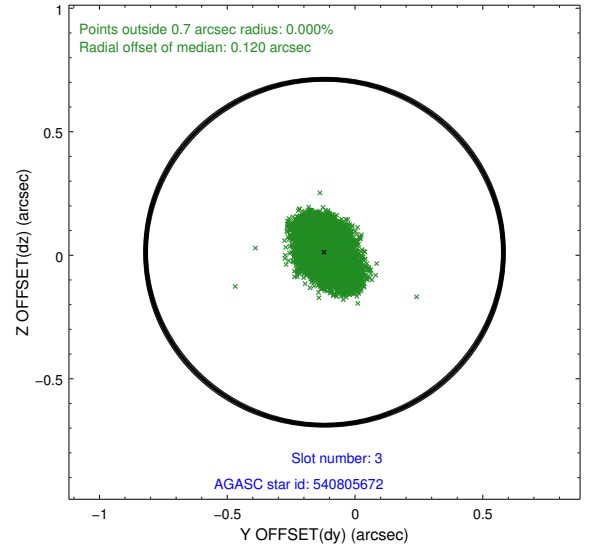
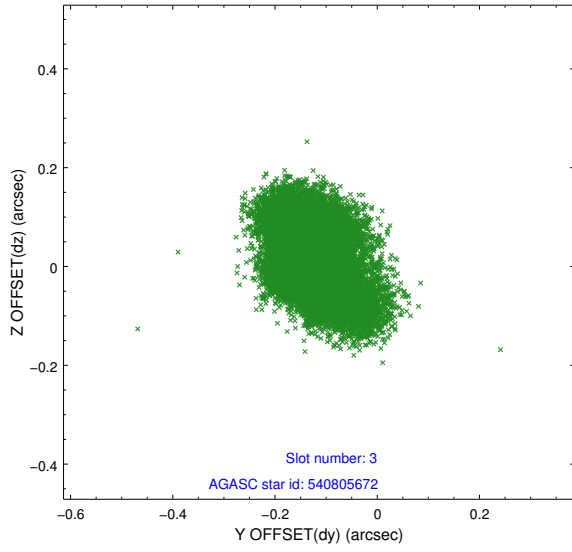


Slot Statistics

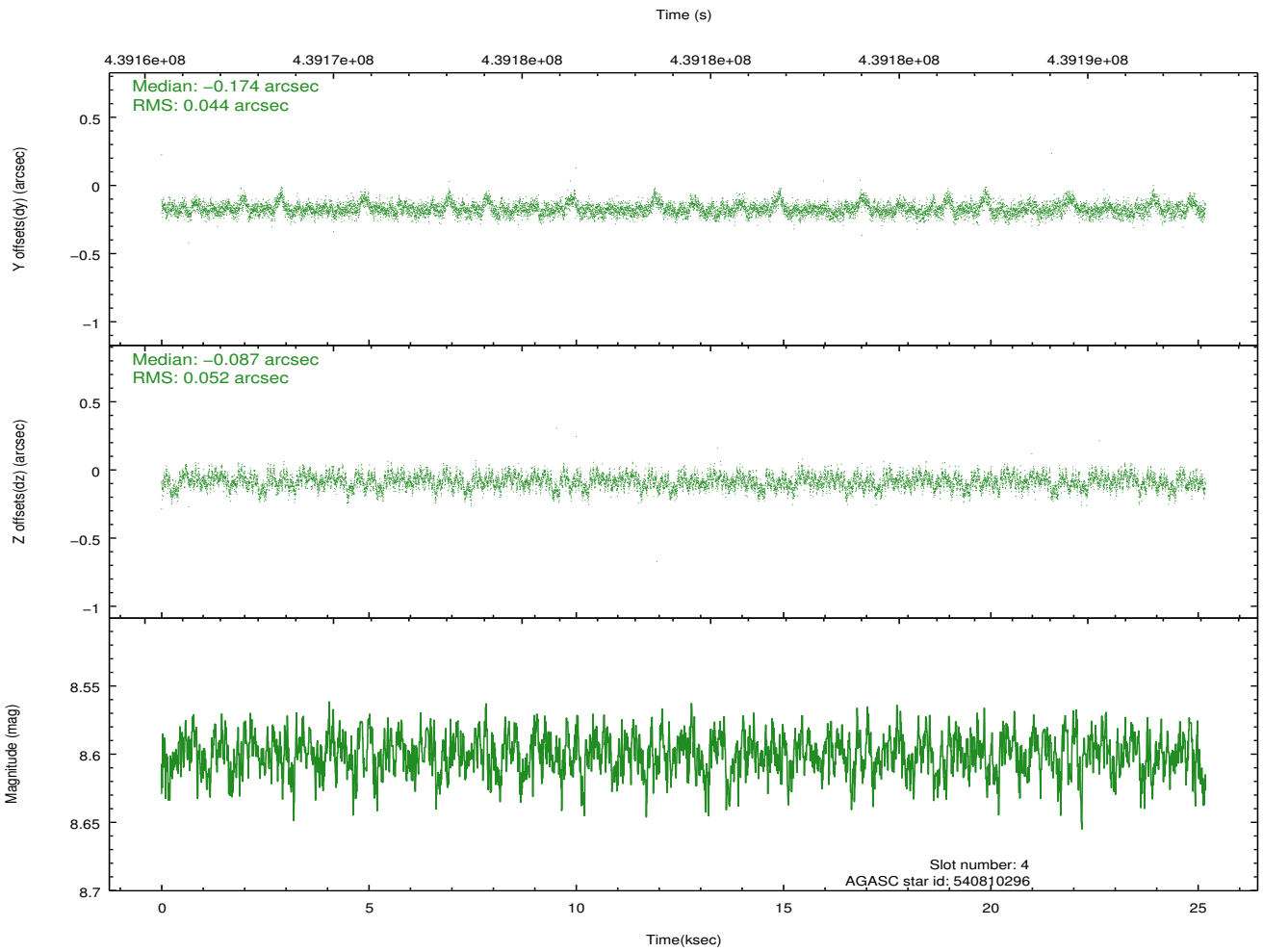
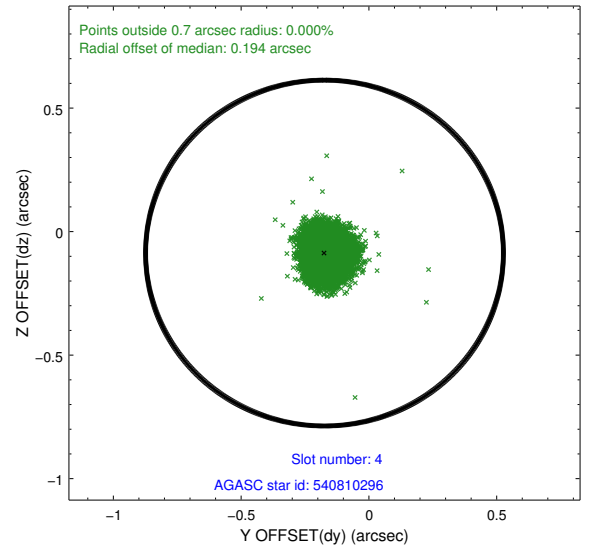
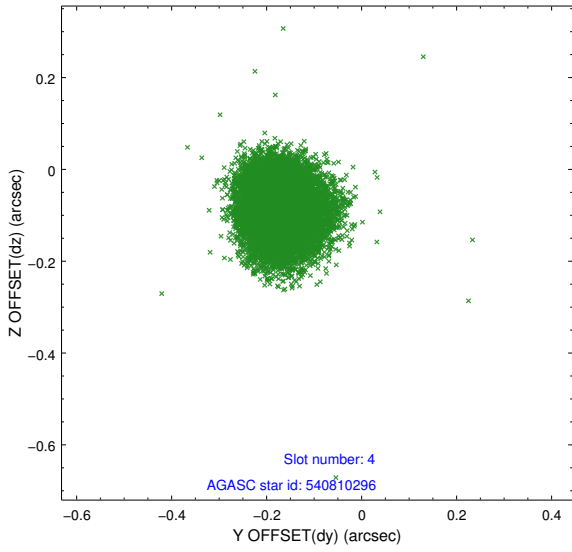
slot	status	id	mag	n_pts	med_dy	med_dz	dr1	dr2	ra	dec	mean_y	mean_z
0	FID	ACIS-I-1	7.13	6142	0.095	-0.052	0.007	0.012	0.000000	0.000000	930.13	-835.74
1	FID	ACIS-I-5	7.11	6142	-0.222	0.095	0.006	0.011	0.000000	0.000000	-1818.21	1061.87
2	FID	ACIS-I-6	7.12	6142	0.035	0.027	0.007	0.013	0.000000	0.000000	395.52	1706.41
3	GUIDE	540805672	8.13	12282	-0.119	0.012	0.098	0.150	120.618810	60.415883	-466.01	1179.89
4	GUIDE	540810296	8.60	12277	-0.174	-0.087	0.072	0.117	120.900356	60.703134	305.62	329.24
5	GUIDE	540810744	7.19	12282	-0.165	0.177	0.055	0.087	121.883444	60.709017	-308.78	-1289.66
6	GUIDE	540819080	7.09	12283	0.127	-0.167	0.076	0.125	120.569114	60.993476	1492.79	474.83
7	GUIDE	540804760	9.38	12279	0.330	0.060	0.122	0.198	121.911782	60.689442	-391.89	-1311.06

2.4 Star Slots

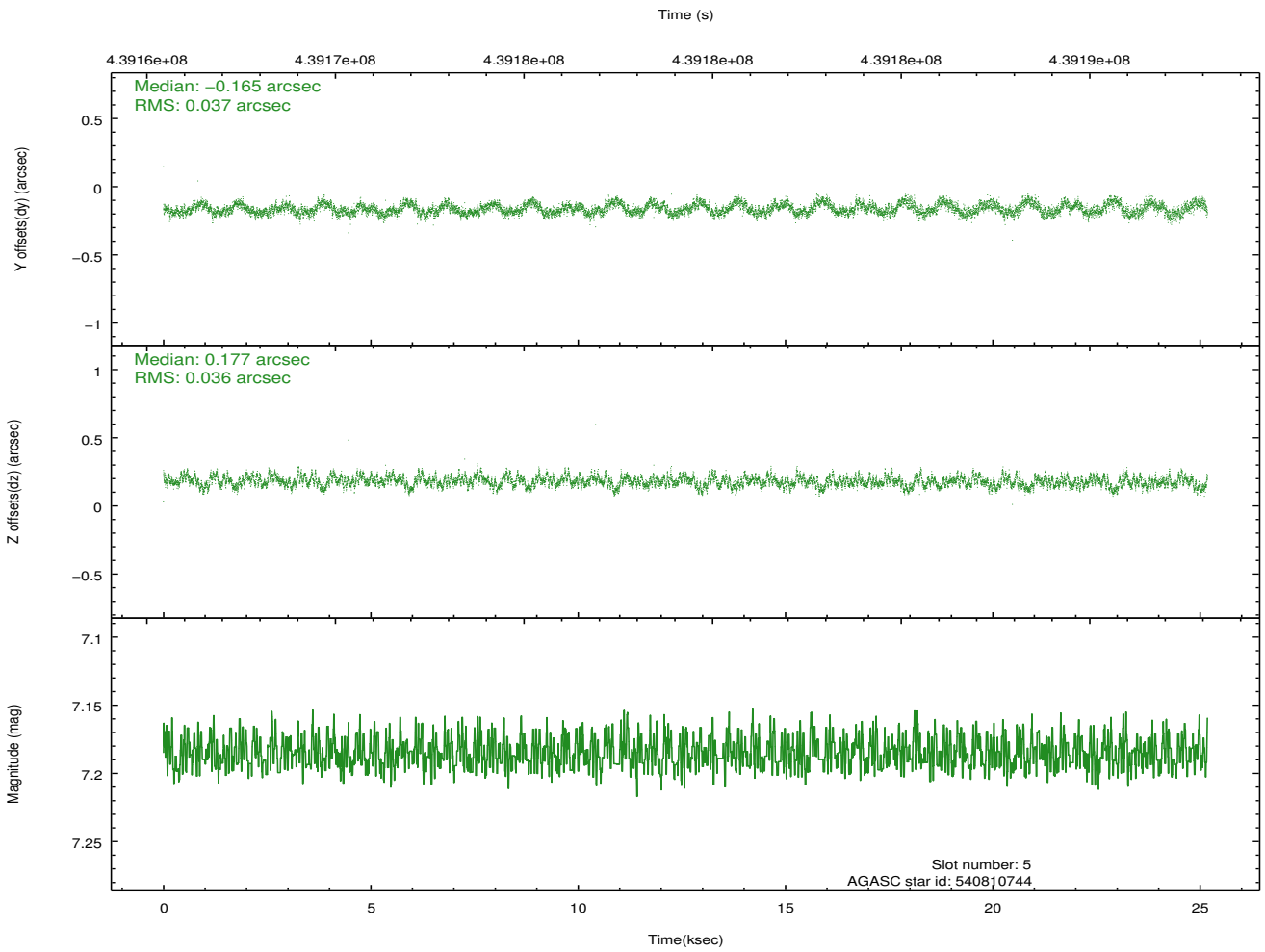
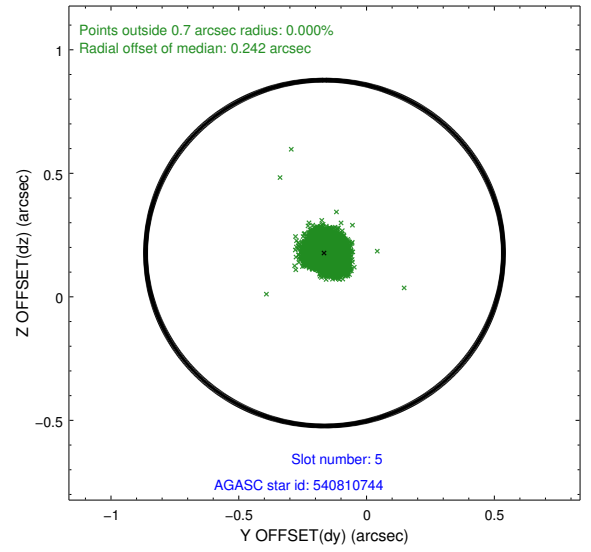
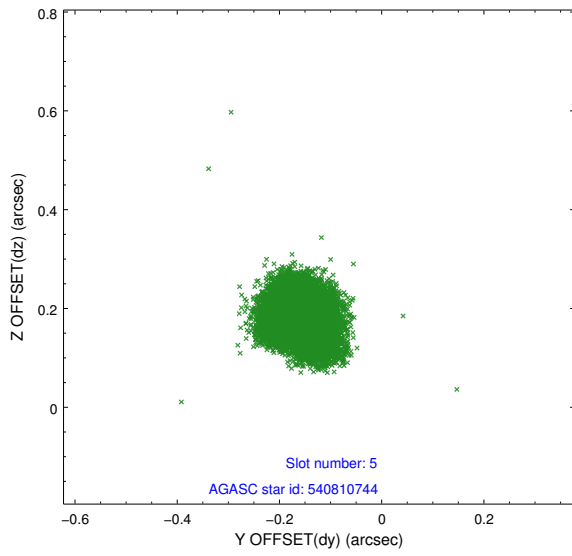
2.4.1 Slot 3



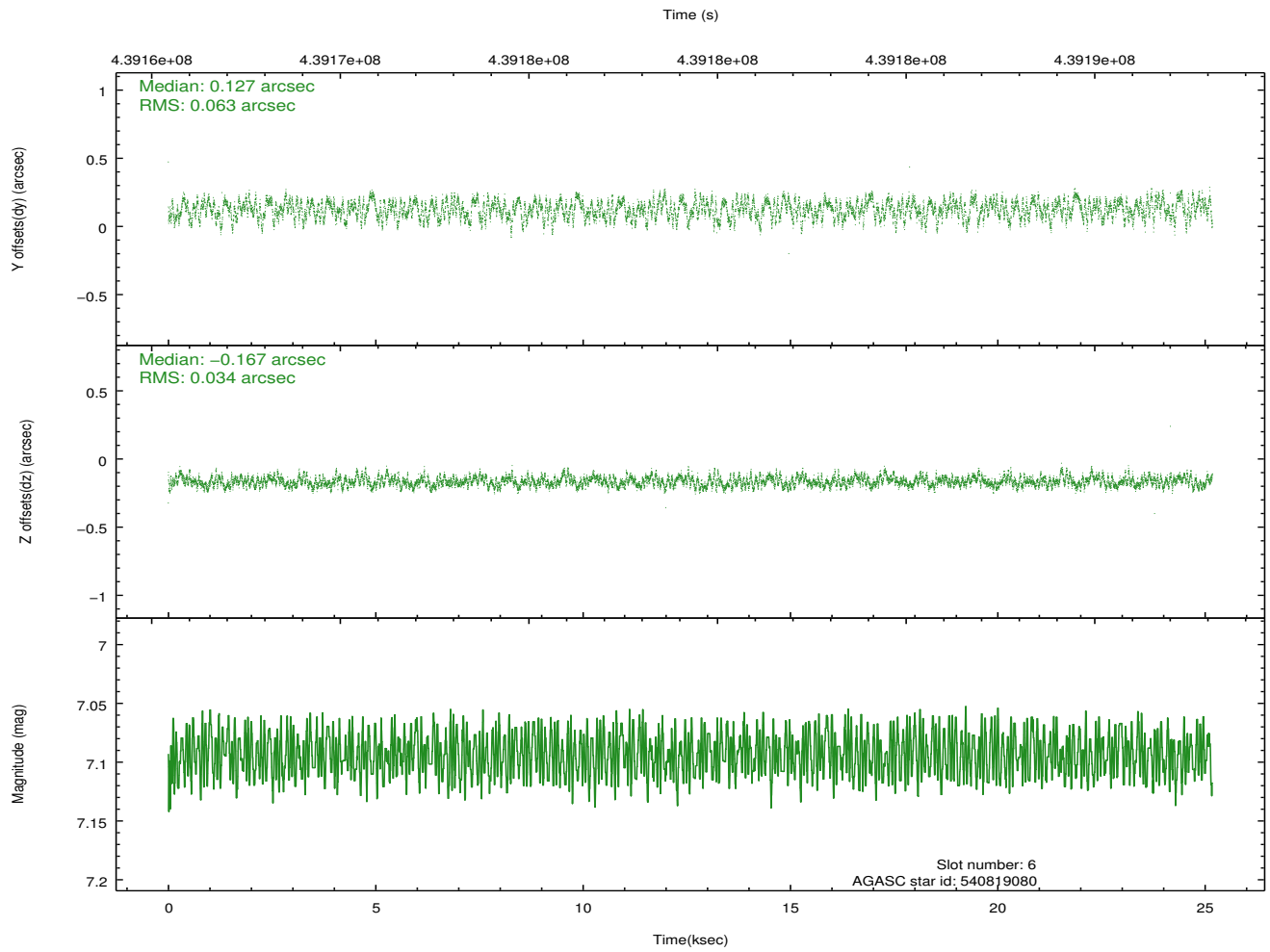
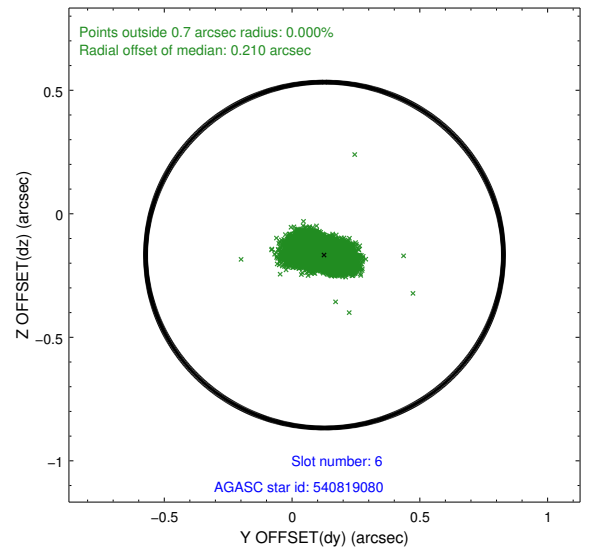
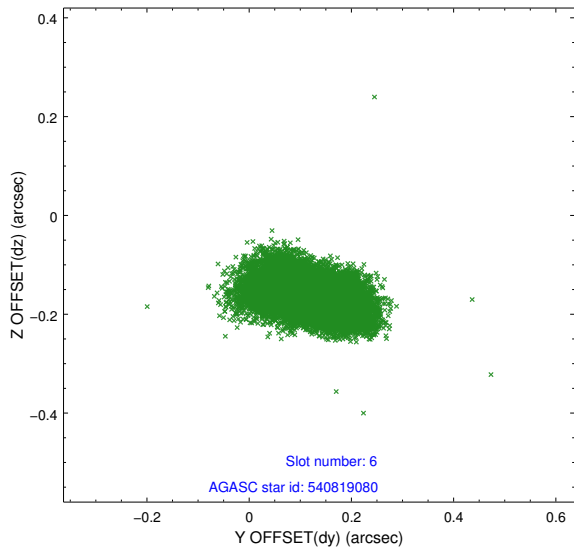
2.4.2 Slot 4



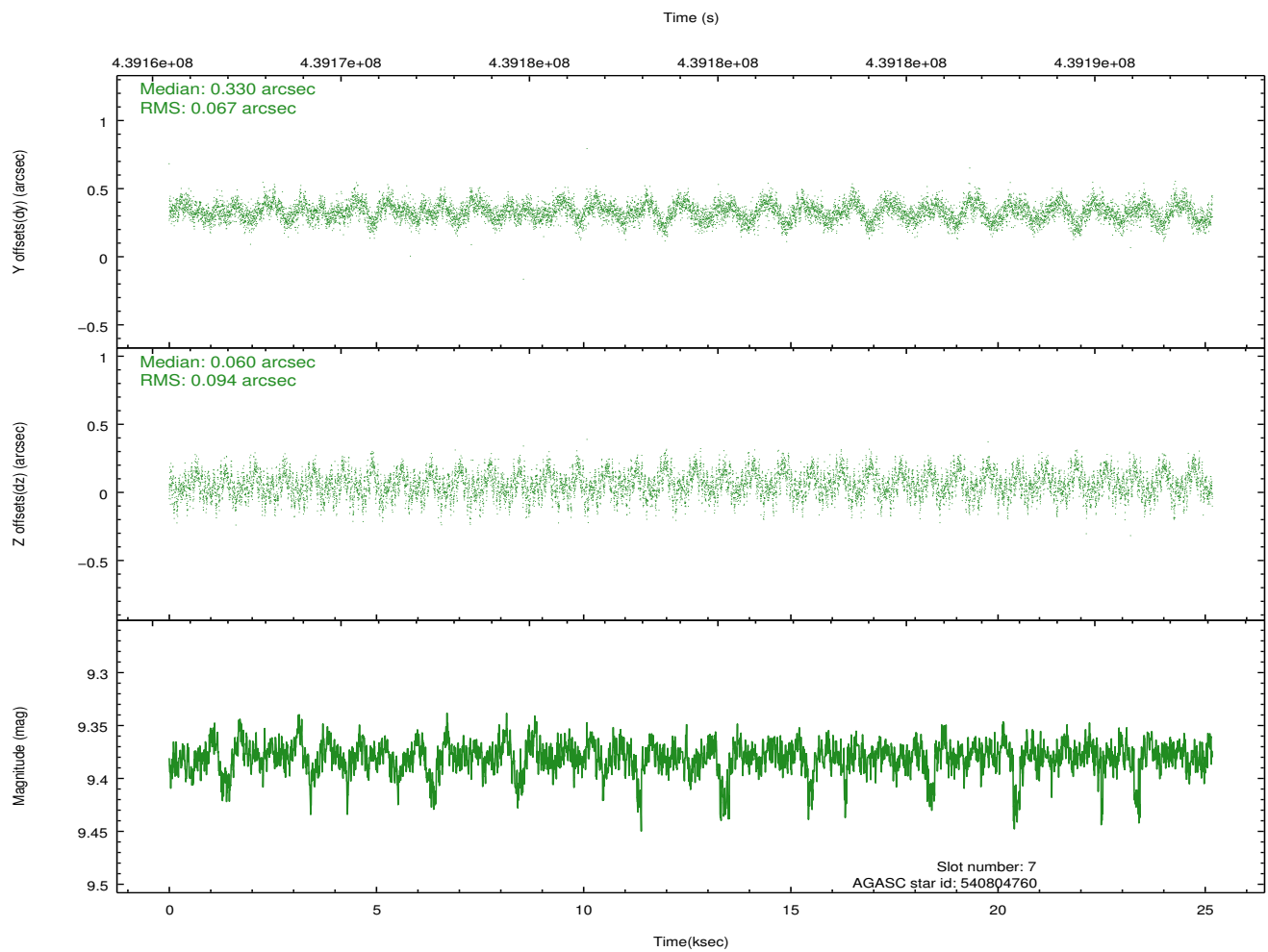
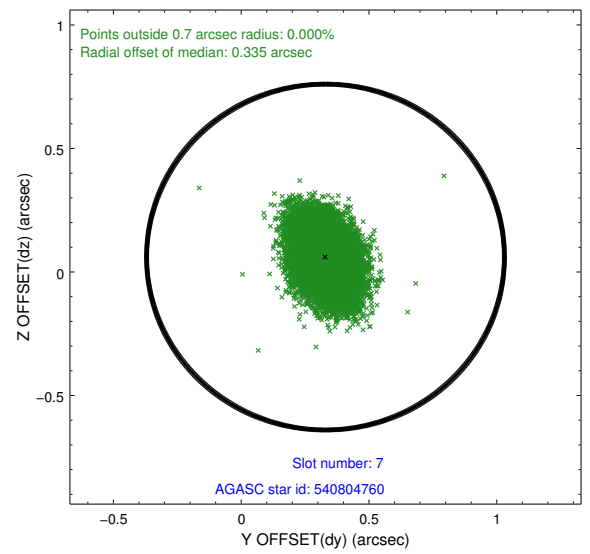
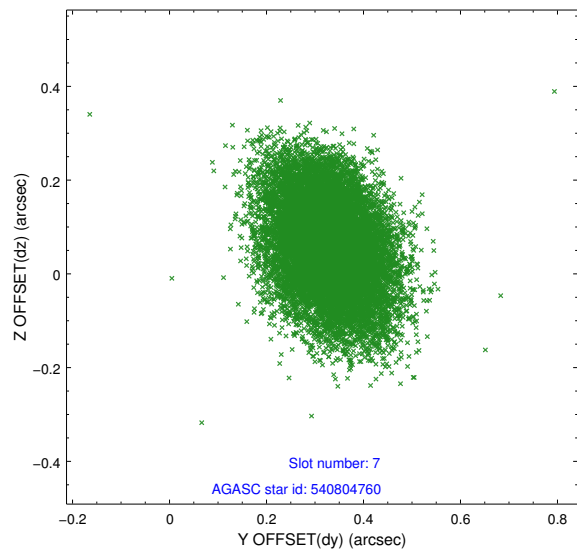
2.4.3 Slot 5



2.4.4 Slot 6

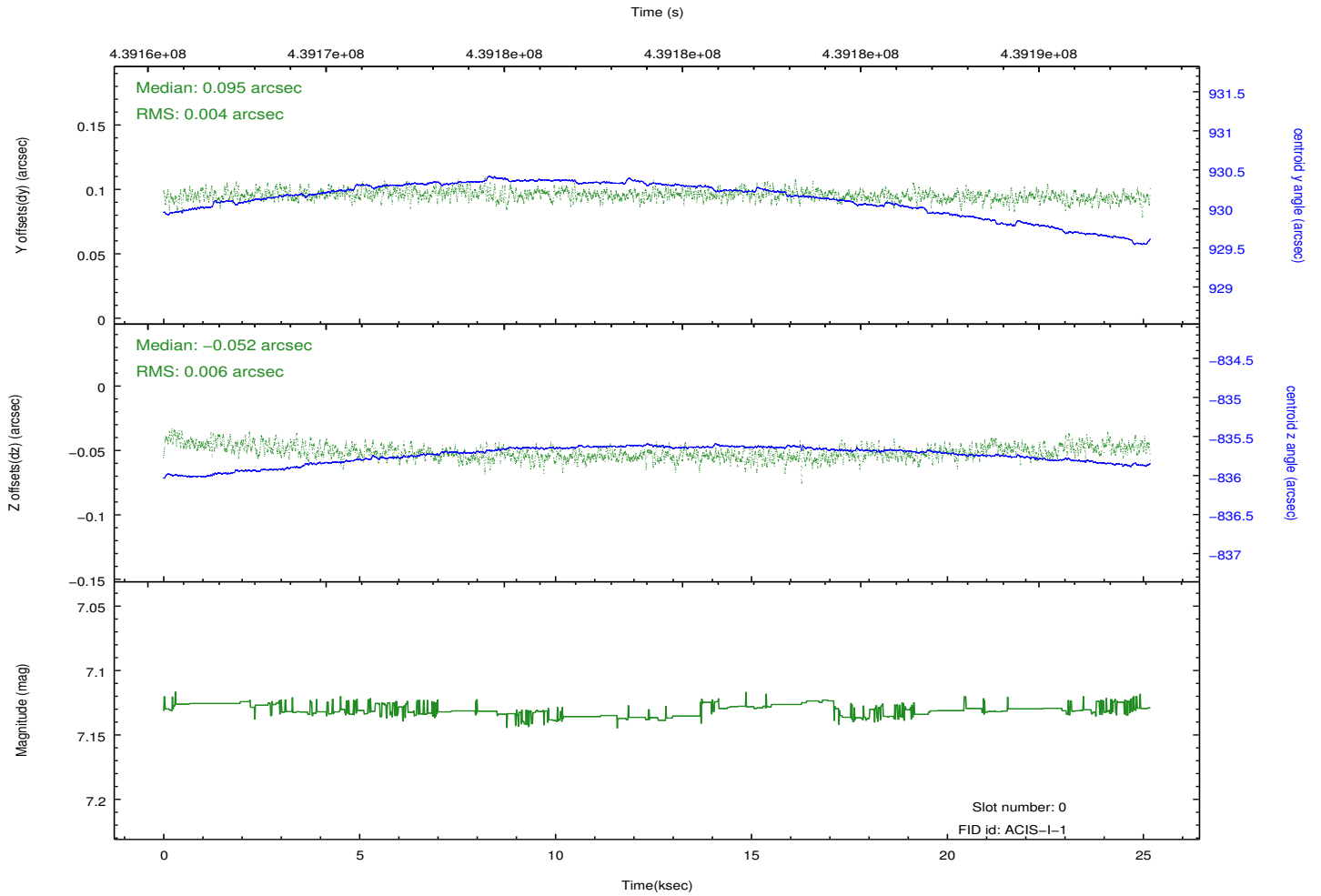
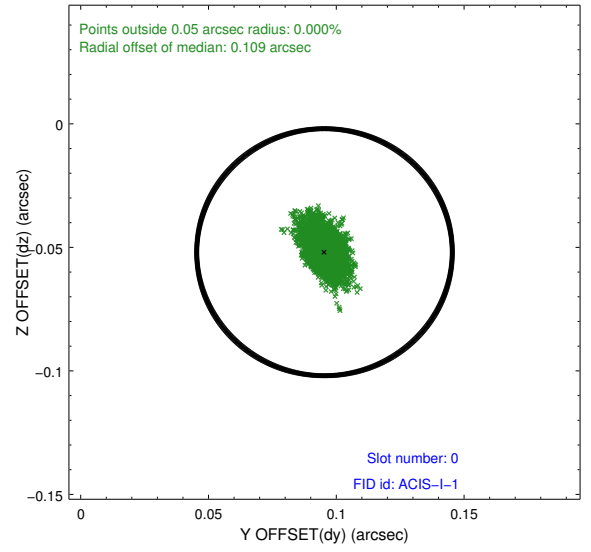
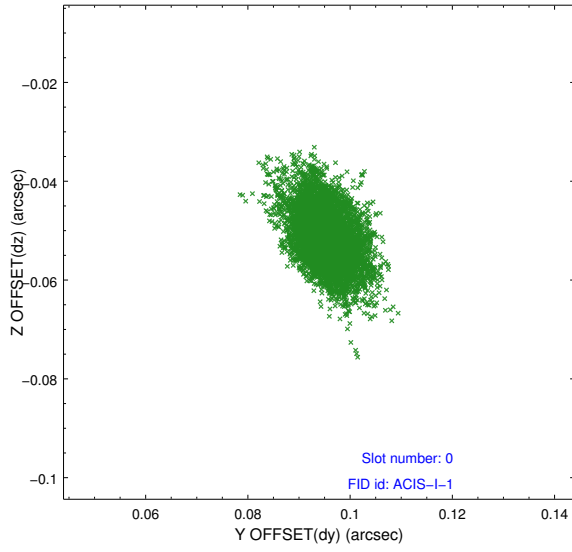


2.4.5 Slot 7

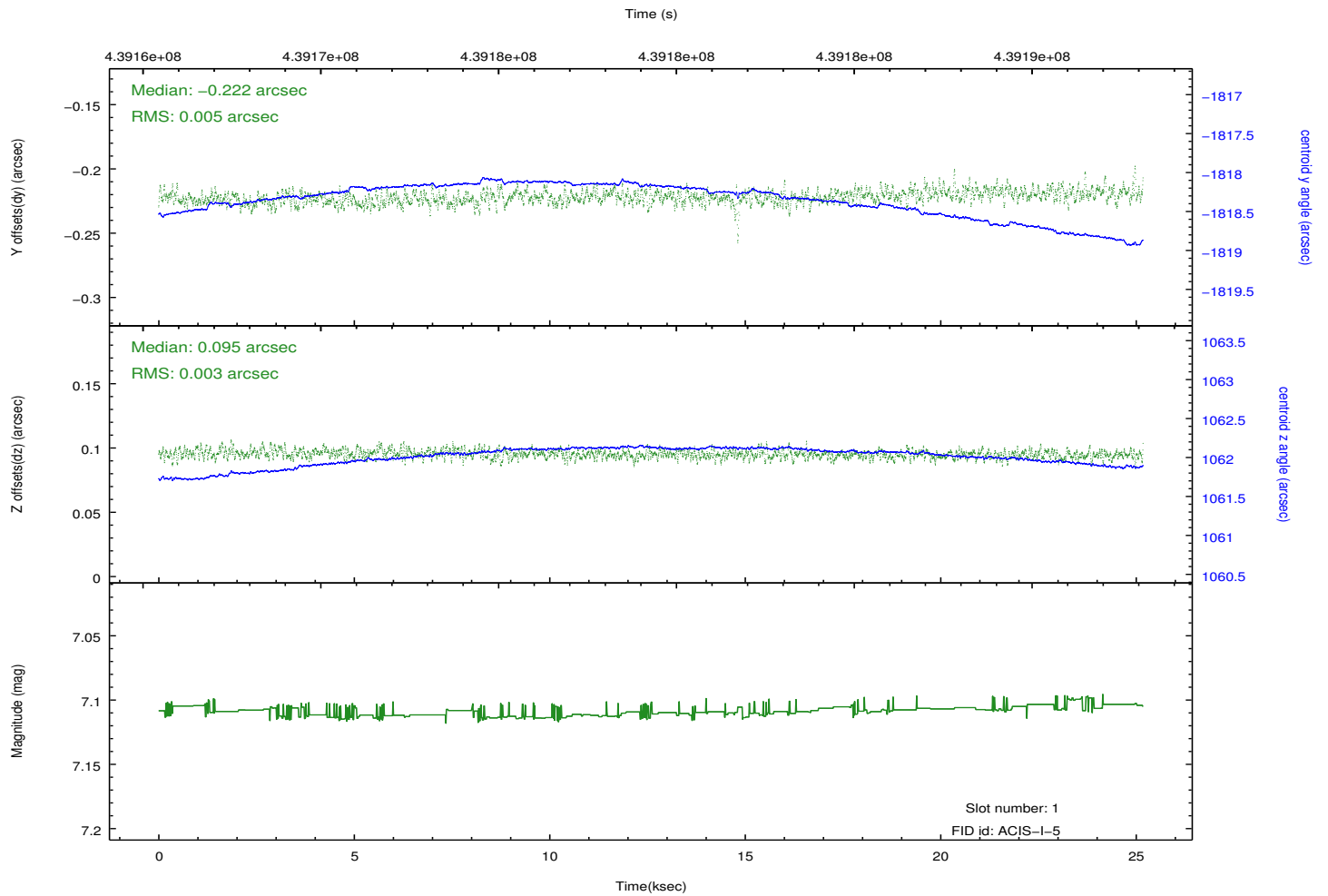
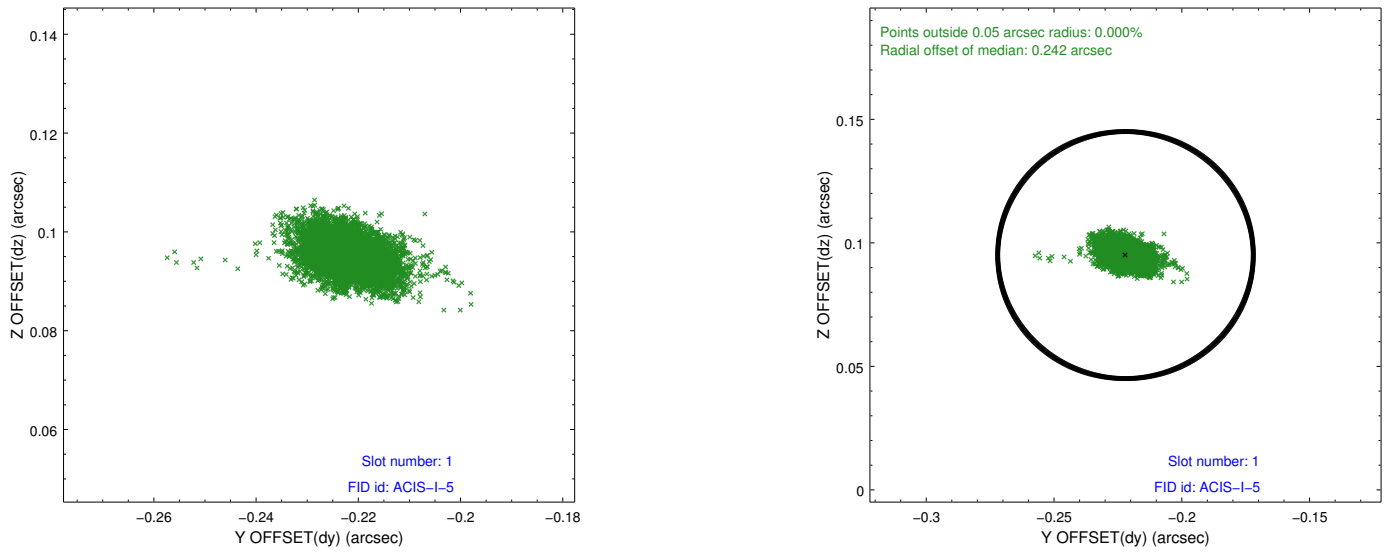


2.5 FID Slots

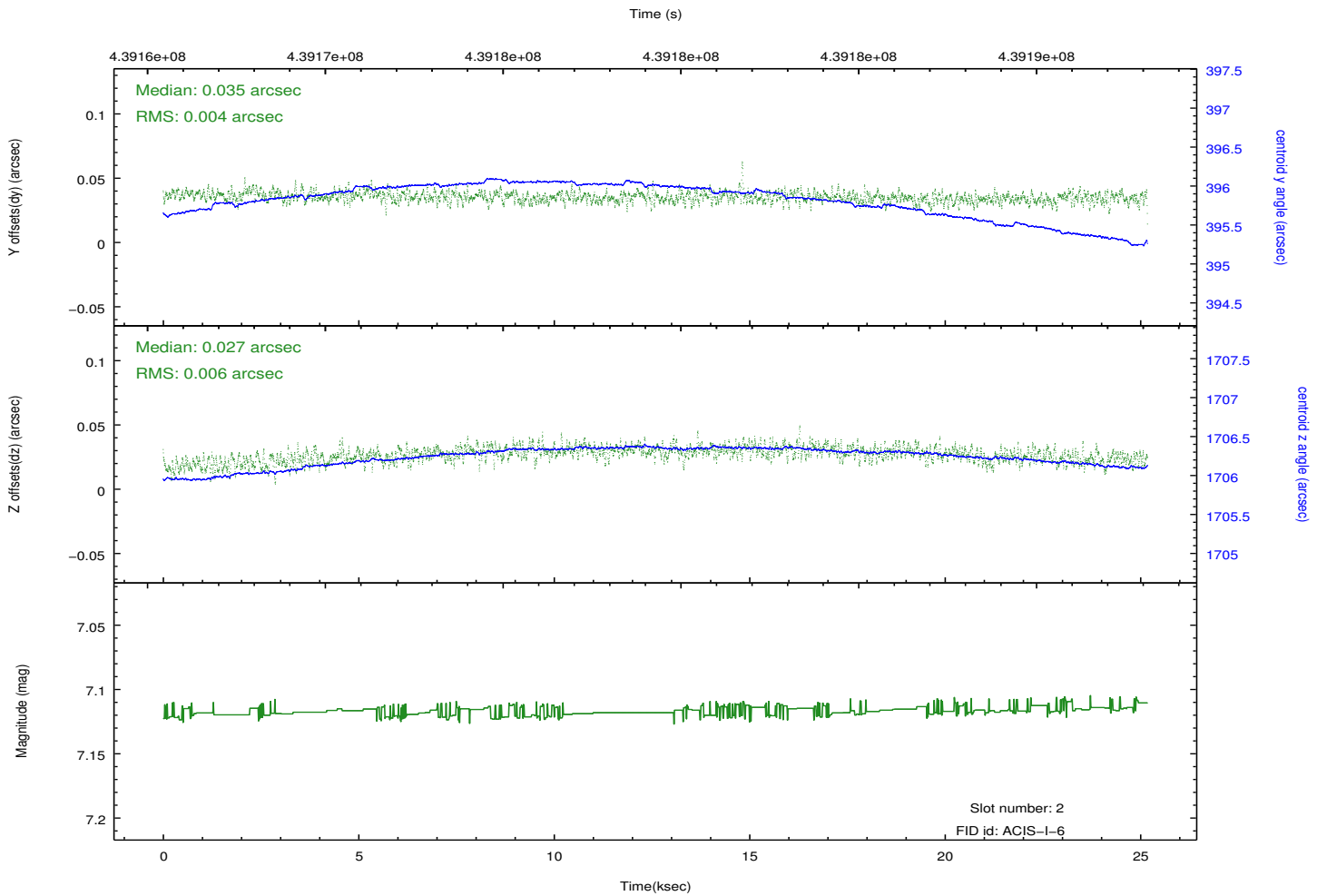
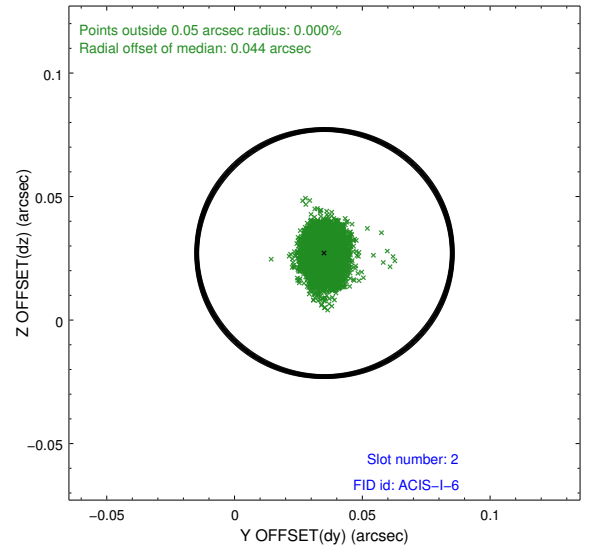
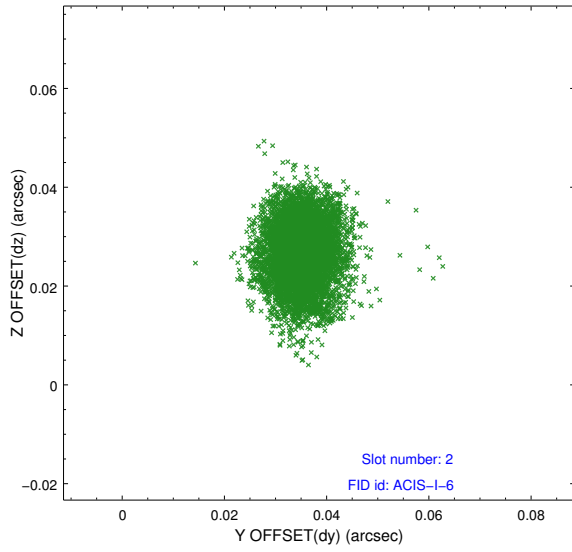
2.5.1 Slot 0



2.5.2 Slot 1



2.5.3 Slot 2



A Summary

A.1 Status

V&V Scientist	Beth Sundheim
V&V Date (YYYY-MM-DD)	2012.02.29
V&V Edition	1
V&V Disposition and Status	OK
V&V Charge Time	25.073

A.2 Comments