

# V&V Reference Report

## L2 ASCDS Version : 8.1.1

Observation 1465 - L2 Version 4  
Chandra X-Ray Center

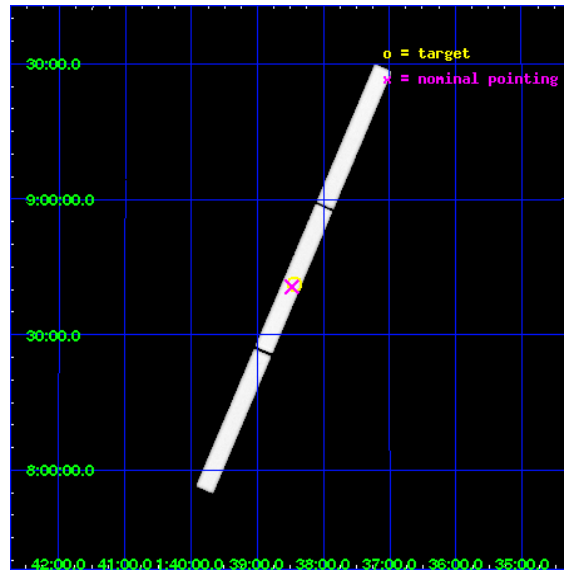
L2 Processing Date : Nov 24 2009

## Contents

<b>1</b>	<b>Front</b>	<b>2</b>
<b>2</b>	<b>OBI</b>	<b>3</b>
2.1	OBI . . . . .	3
2.1.1	Images . . . . .	3
2.1.2	Parameters . . . . .	4
2.1.3	Events . . . . .	4
2.2	Compared Parameters . . . . .	5
2.3	Aspect . . . . .	6
2.4	Star Slots . . . . .	9
2.4.1	Slot 3 . . . . .	9
2.4.2	Slot 4 . . . . .	10
2.4.3	Slot 5 . . . . .	11
2.4.4	Slot 6 . . . . .	12
2.4.5	Slot 7 . . . . .	13
2.5	FID Slots . . . . .	14
2.5.1	Slot 0 . . . . .	14
2.5.2	Slot 1 . . . . .	15
2.5.3	Slot 2 . . . . .	16
<b>3</b>	<b>Gratings</b>	<b>17</b>
3.1	LETG Arm . . . . .	17
<b>A</b>	<b>Summary</b>	<b>19</b>
A.1	Status . . . . .	19
A.2	Comments . . . . .	19

# 1 Front

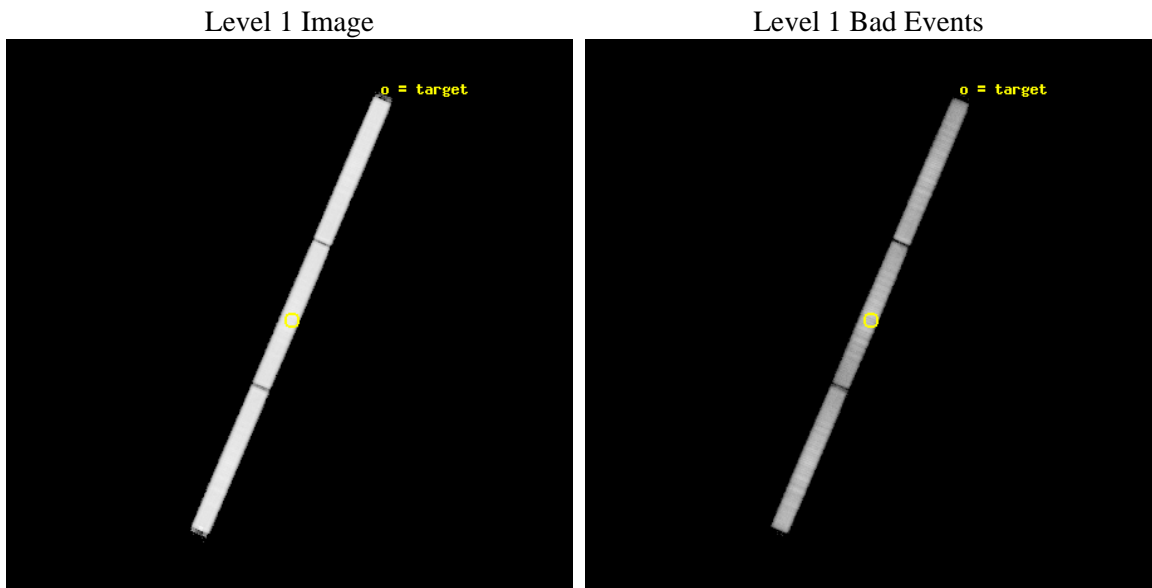
seq_num	100011	Sequence number
obs_id	1465	Observation id
title	&#160	Proposal title
observer	DR. J WAITE	Principal investigator
object	JUPITER	Source name
ra_targ	24.60814	Observer's specified target RA
dec_targ	8.68839	Observer's specified target Dec
ra_nom	24.619233436211	Nominal RA
dec_nom	8.6780233925453	Nominal Dec
roll_nom	293.15259611446	Nominal Roll
revision	4	Processing version of data
ontime	23426.632096551	[s]
livetime	23268.189642576	Ontime multiplied by DTCOR
l2events	1060221	Number of level 2 events



## 2 OBI

### 2.1 OBI

#### 2.1.1 Images



## 2.1.2 Parameters

obi_num	0	Obi number	sched_exp_time	23150.000000	Scheduled observation exposure time
ascdsver	8.1.1	Processing system revision	ontime	23426.632096551	[s]
caldbver	4.1.4	&#160	ll events	1727585	Number of level 1 events
date	2009-11-24T15:27:40	Date and time of file creation			
revision	4	Processing version of data			

## 2.1.3 Events

### Level 1 Events

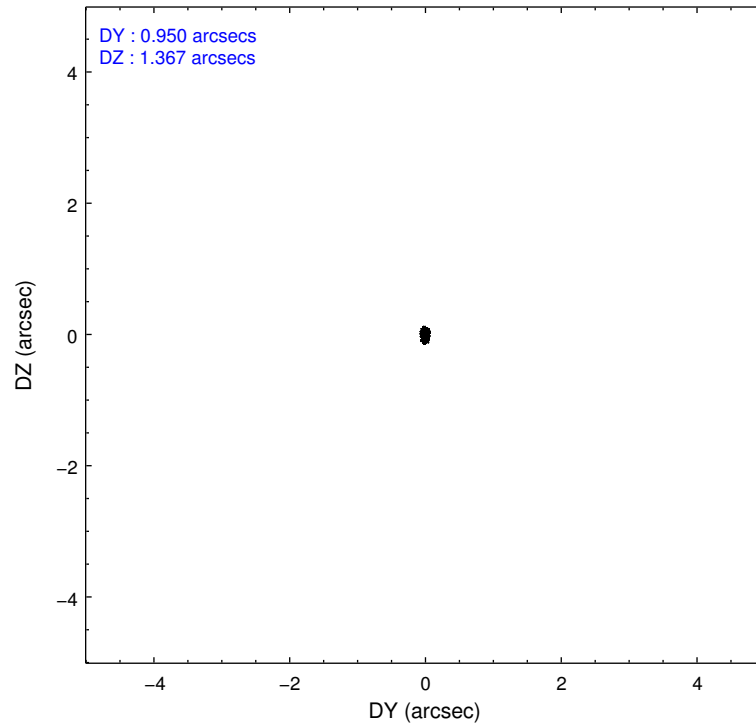
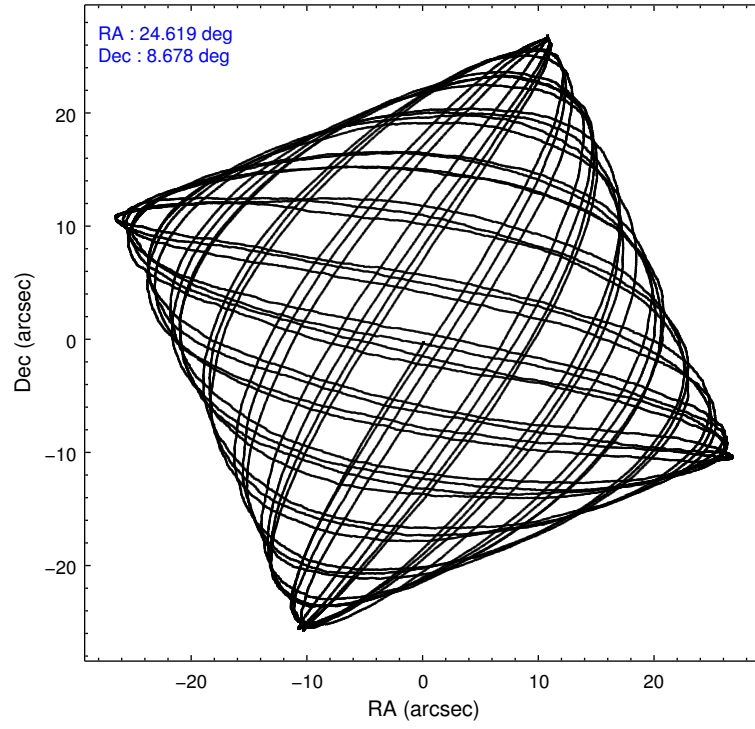
	<b>segment 1</b>	<b>segment 2</b>	<b>segment 3</b>
level 1 events	578431	562765	586389
rejected events	154366	165060	187778
rejected %	26%	29%	32%

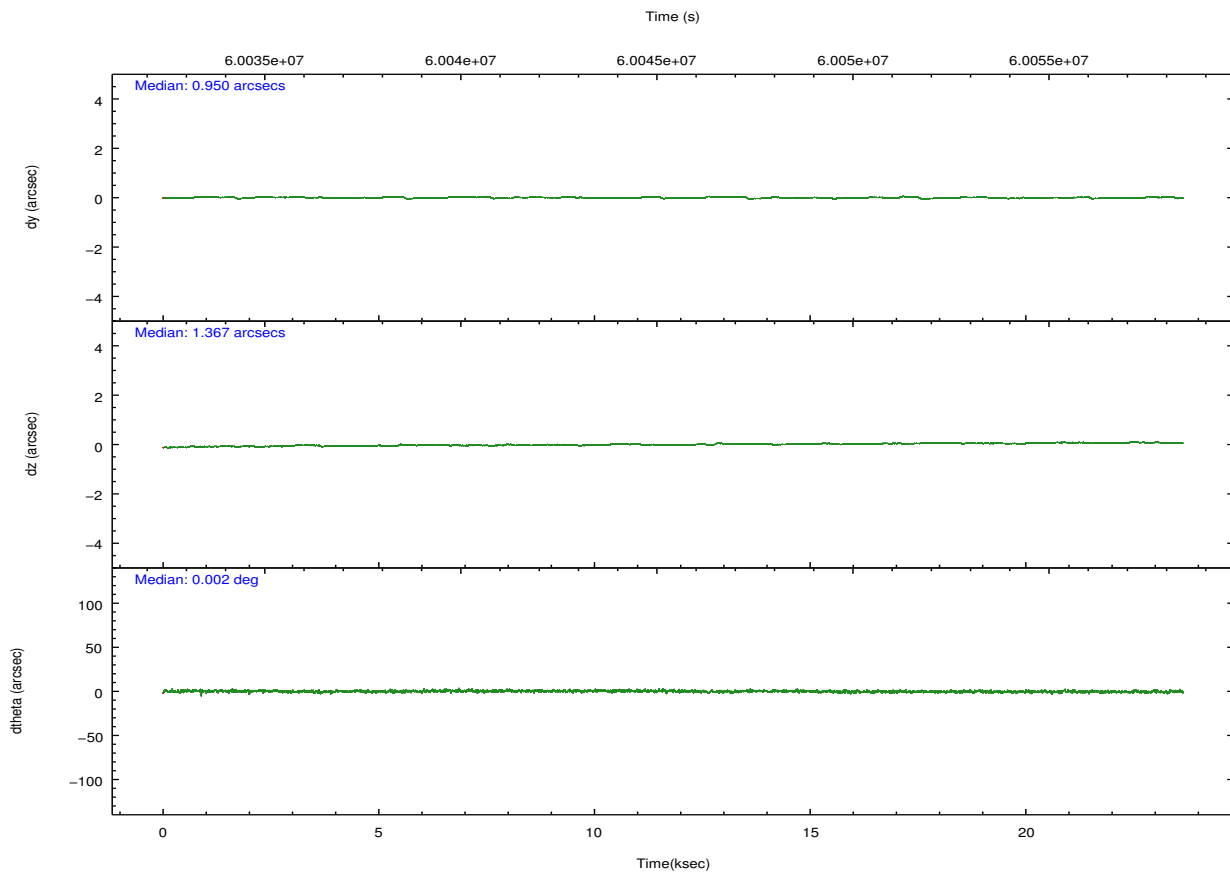
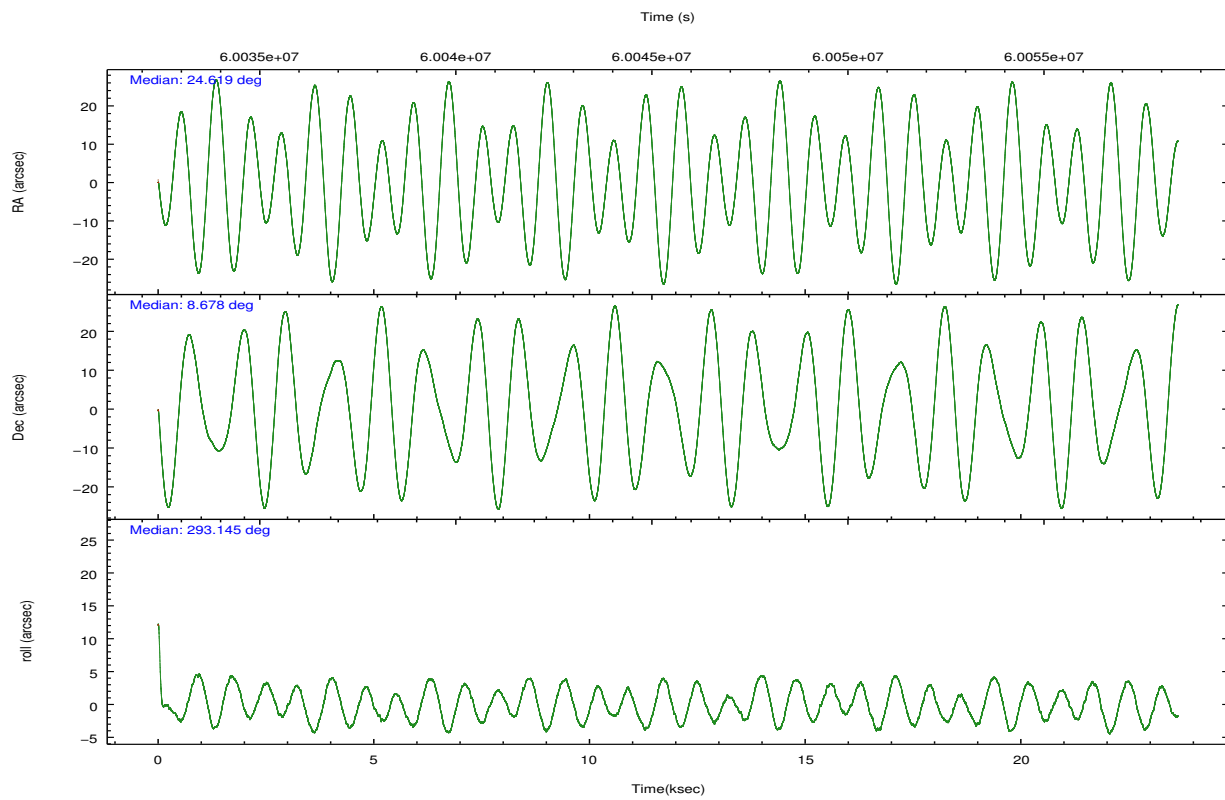
## 2.2 Compared Parameters

Parameter	Planned	Actual
Instrument	HRC	HRC
Detector	HRC-S	HRC-S
Grating	LETG	LETG
Data mode	OBSERVING	OBSERVING
Observation mode	POINTING	POINTING
Pointing RA	24.595247	24.61923343621117
Pointing Dec	8.694642	8.678023392545336
Pointing Roll	293.088871	293.1525961144586
Window start time	60034084.184000	60034084.184000
Window stop time	60057244.184000	60057244.184000
SIM focus pos (mm)	-1.429586	-1.428180813131781
SIM defocus (mm)	0.1037507710433287	0.1051558262725154
SIM translation stage pos (mm)	250.455976	250.466033080201
SIM translation stage offset (mm)	0	-0.01005468664627074
Observation start time	60034084.184000	60033417.587892
Observation start date	1999-11-26T20:07:00	1999-11-26T19:56:57
Observation end time	60057234.184000	60057958.138779
Observation end date	1999-11-27T02:32:50	1999-11-27T02:45:58

Parameter	Planned	Actual
Obspar format version number	6	6
Obspar file type	PREDICTED	ACTUAL
Obspar update status	NONE	UPDATED

## 2.3 Aspect



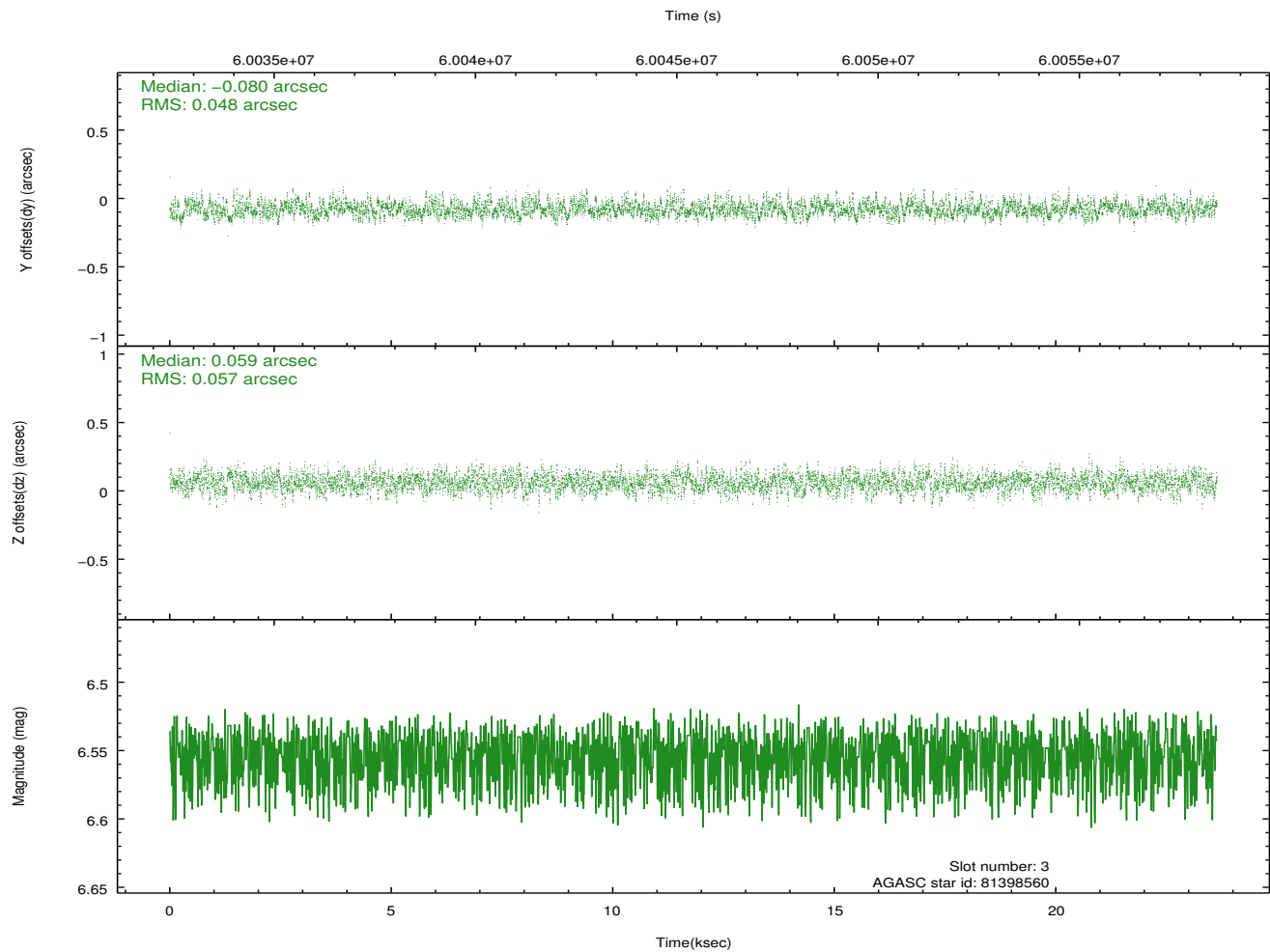
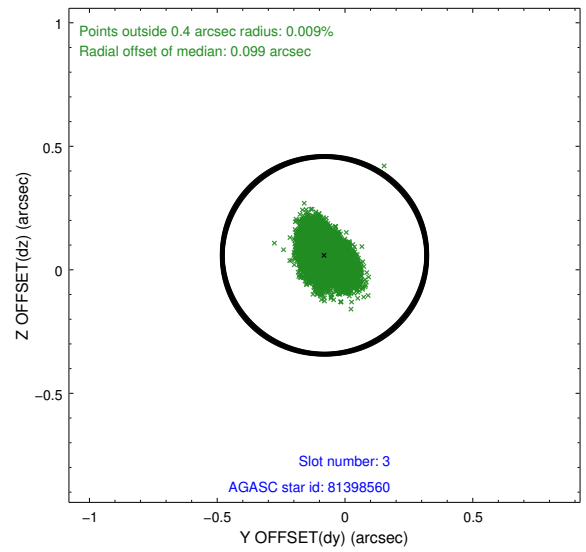
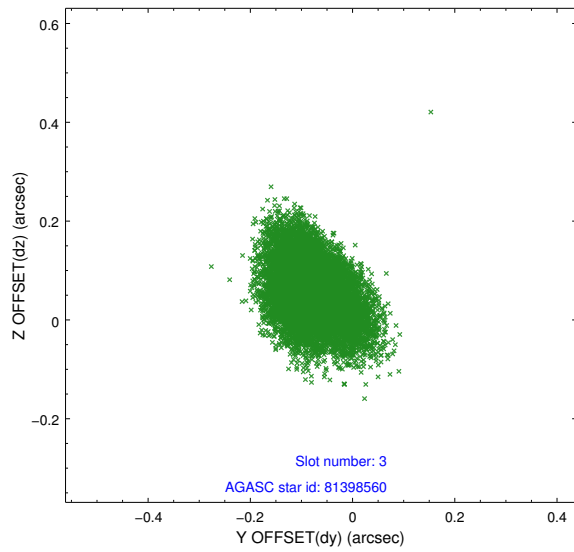


### Slot Statistics

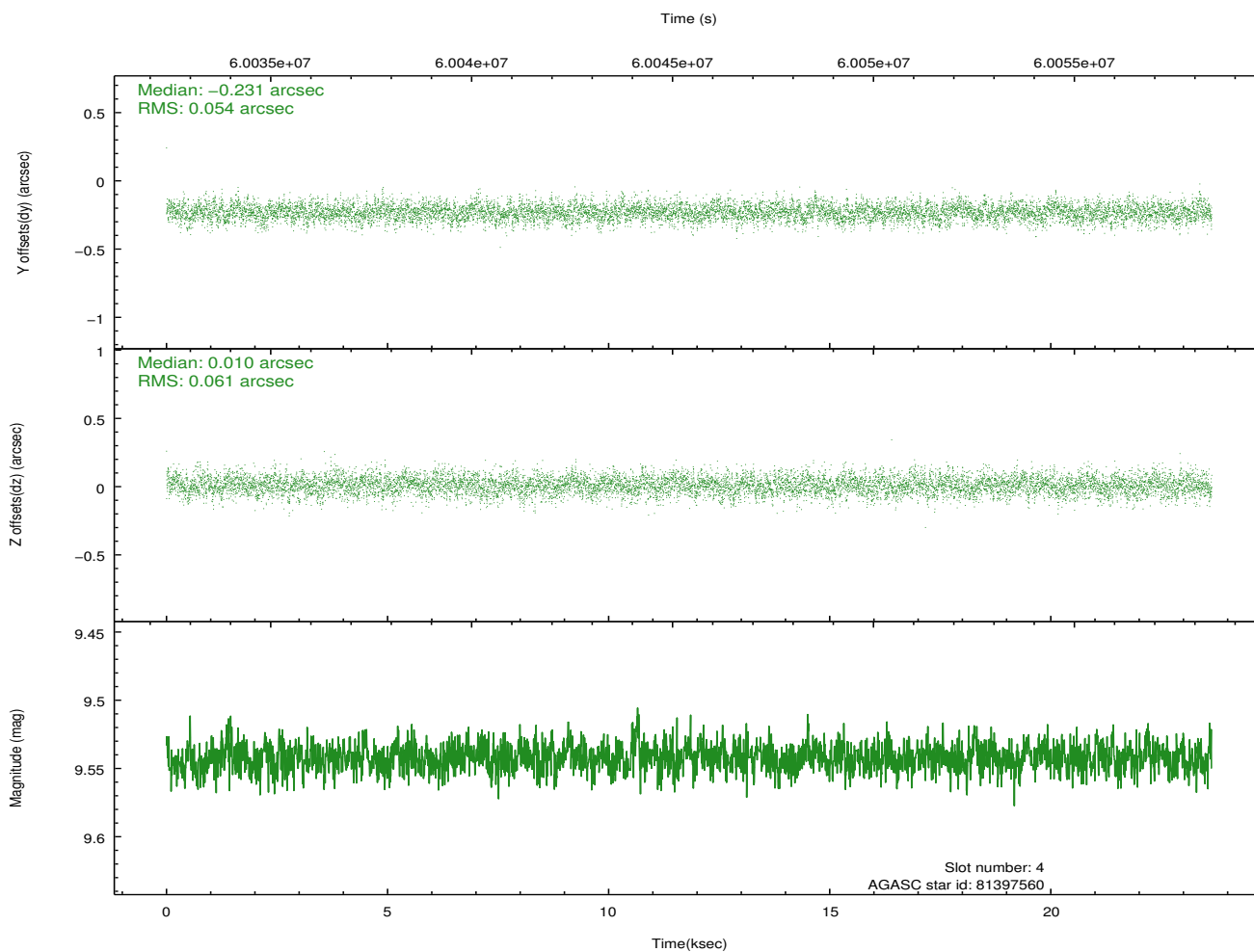
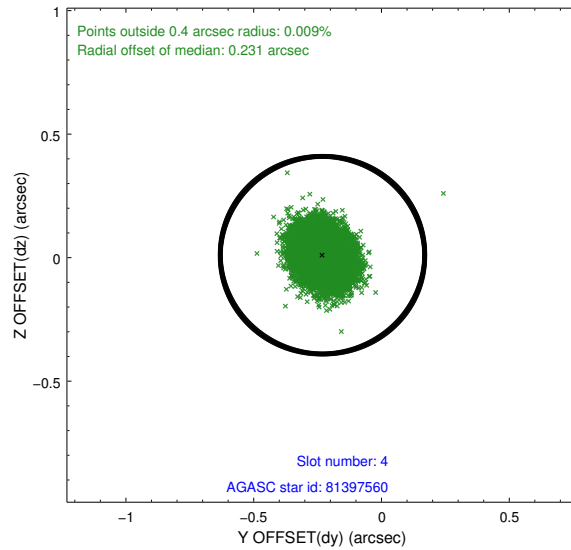
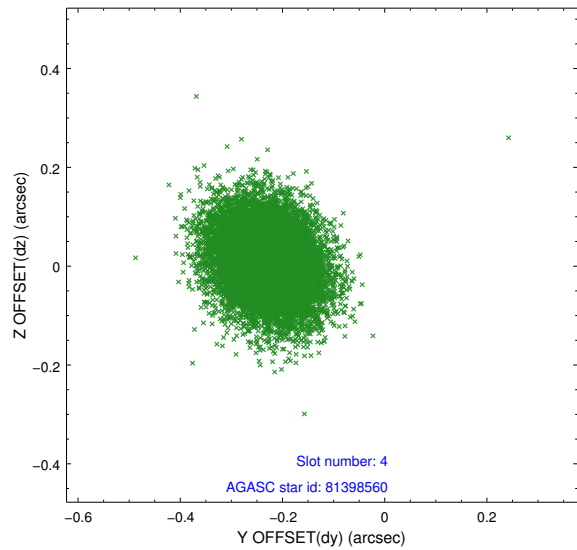
slot	status	id	mag	n_pts	med_dy	med_dz	dr1	dr2	ra	dec	mean_y	mean_z
0	FID	HRC-S-1	7.00	11533	0.127	-0.114	0.009	0.014	0.000000	0.000000	-1155.00	-449.63
1	FID	HRC-S-3	7.02	11533	0.108	-0.084	0.010	0.016	0.000000	0.000000	-1157.76	579.89
2	FID	HRC-S-4	6.98	11533	0.152	-0.099	0.005	0.008	0.000000	0.000000	1243.27	582.32
3	GUIDE	81398560	6.55	11533	-0.080	0.059	0.078	0.130	25.145528	8.760778	547.95	1895.70
4	GUIDE	81397560	9.54	11521	-0.231	0.010	0.086	0.142	24.004098	8.965422	-1721.87	-1550.34
5	GUIDE	81398056	9.21	11524	0.031	0.136	0.104	0.170	25.259975	8.764958	693.11	2276.39
6	GUIDE	81401872	9.32	11522	0.350	-0.248	0.117	0.191	24.228053	7.847453	2293.05	-2399.73
7	GUIDE	81401848	9.57	11519	-0.065	0.041	0.093	0.154	24.221068	8.860999	-1072.44	-988.97

## 2.4 Star Slots

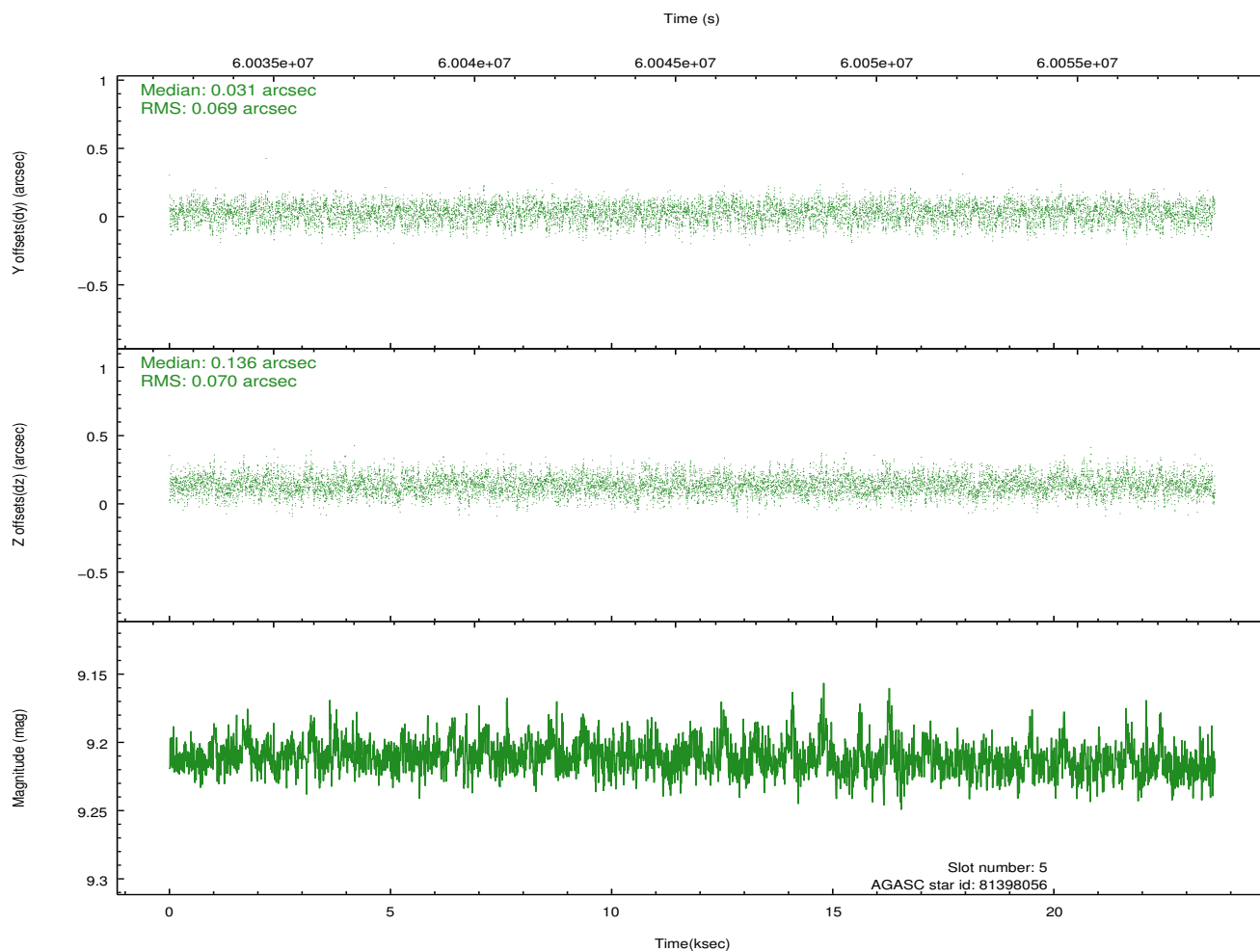
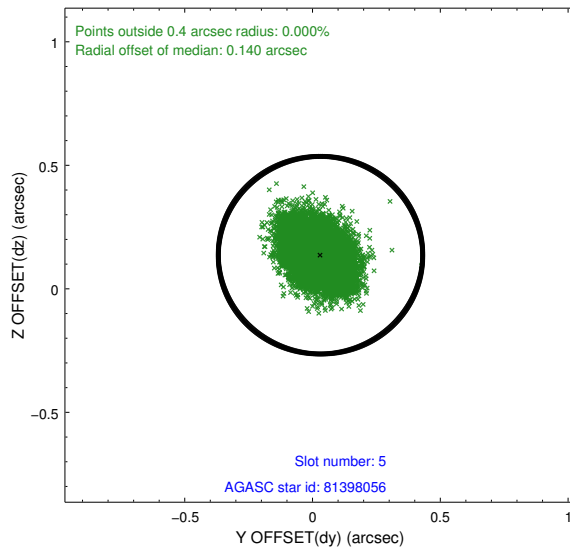
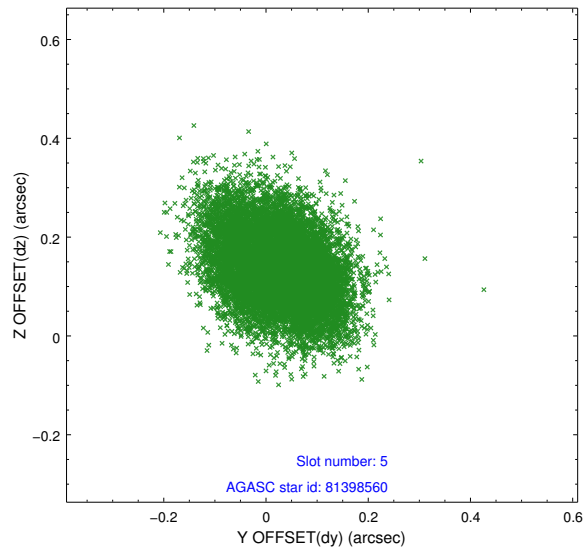
### 2.4.1 Slot 3



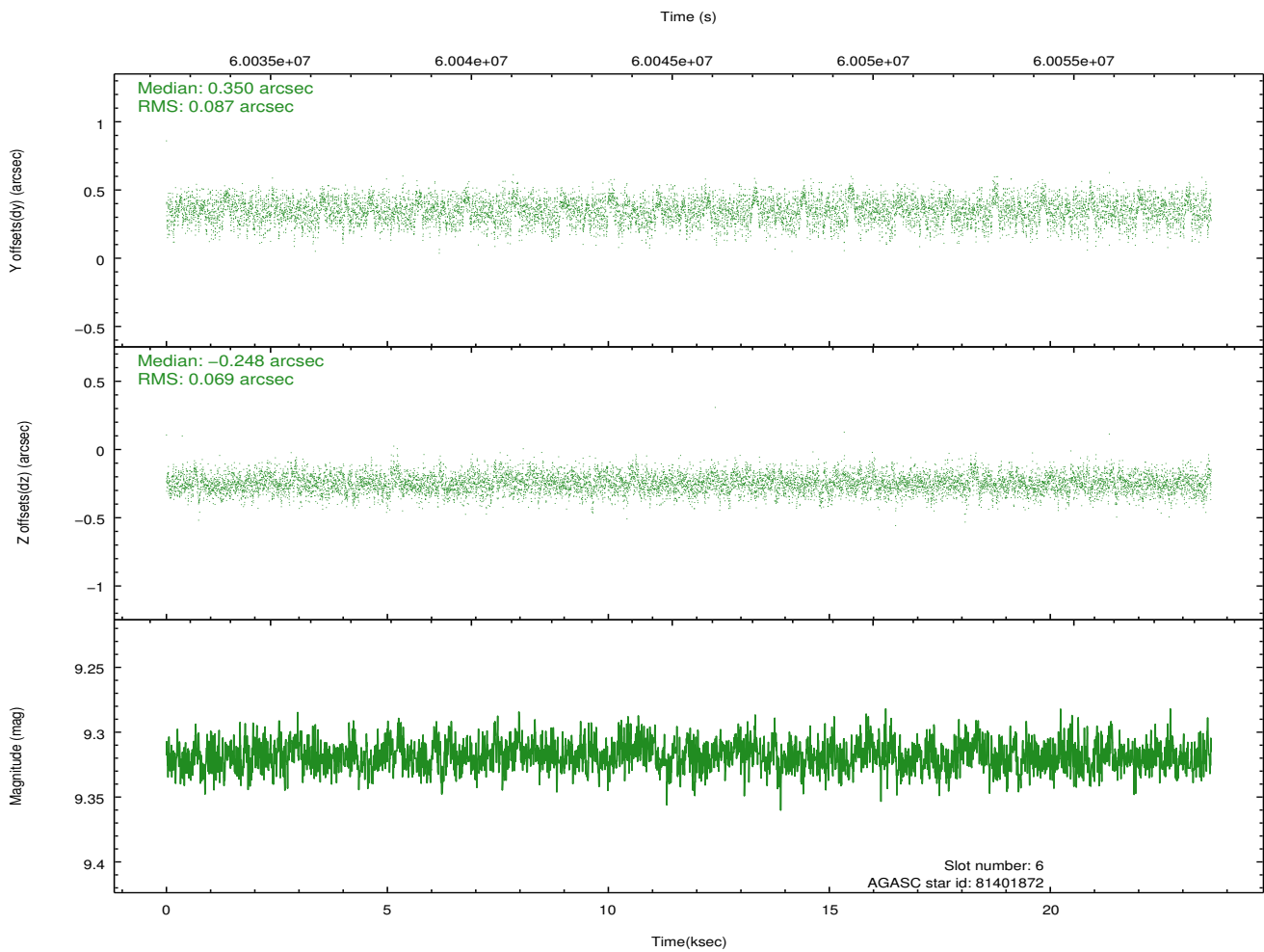
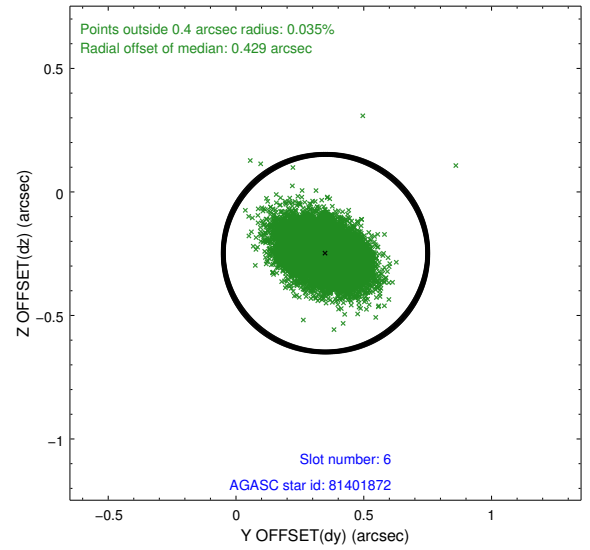
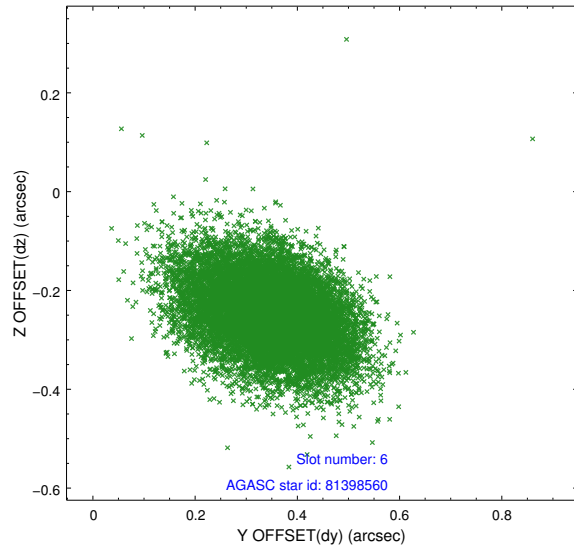
## 2.4.2 Slot 4



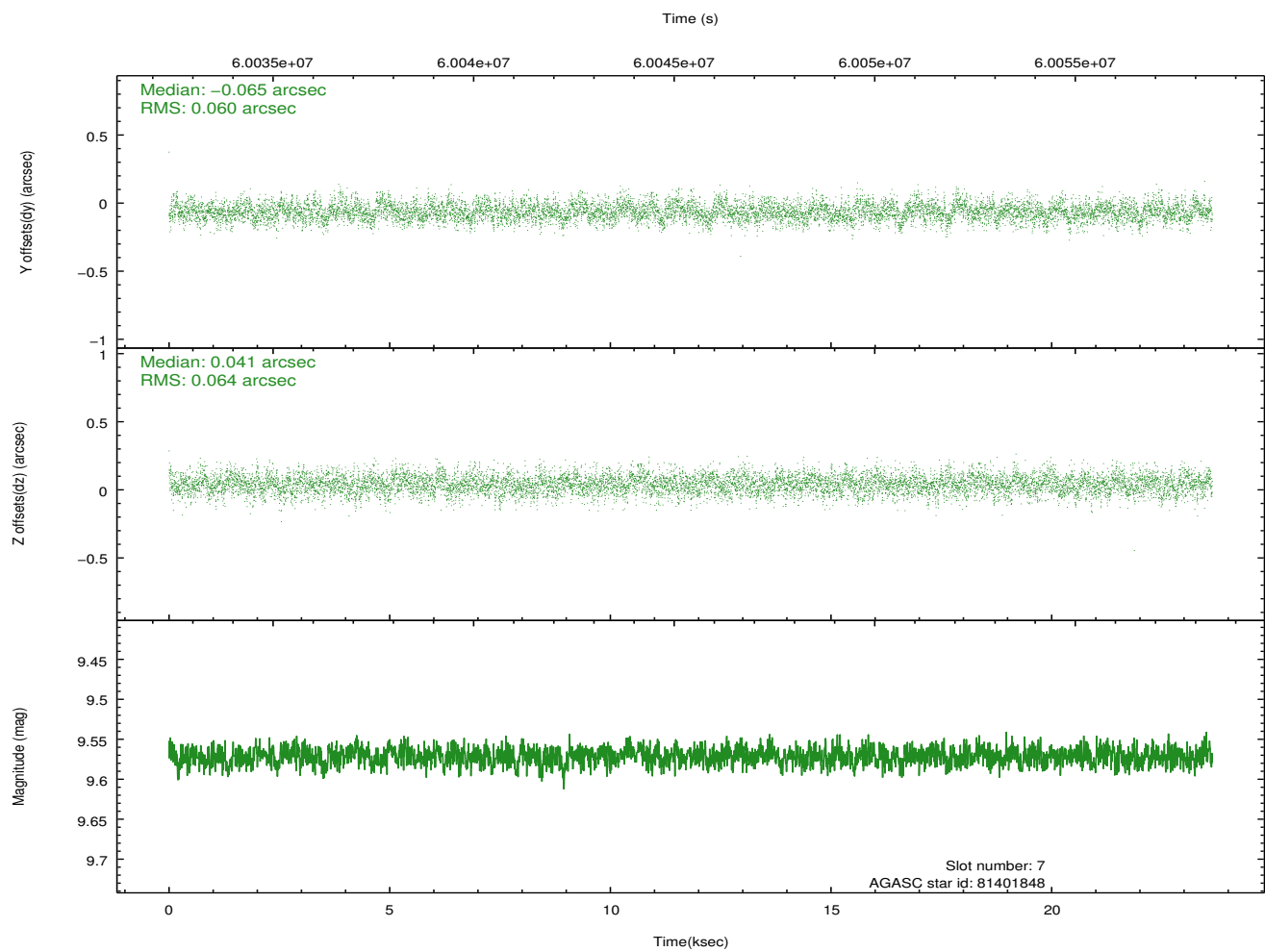
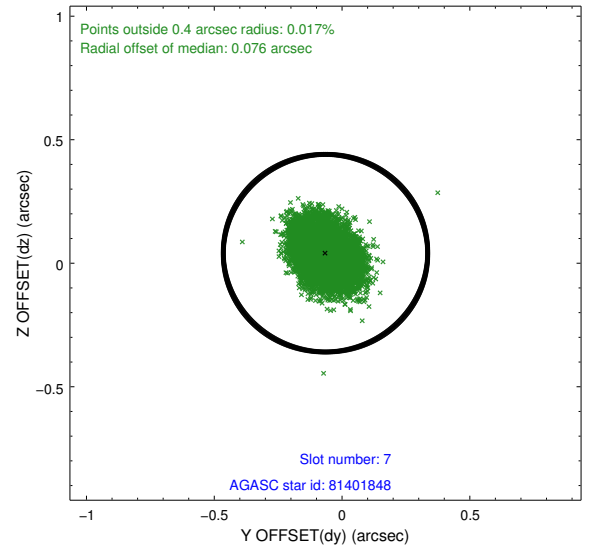
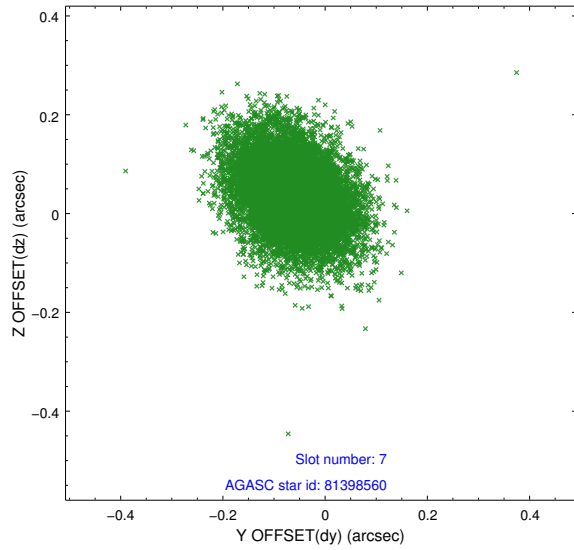
### 2.4.3 Slot 5



## 2.4.4 Slot 6

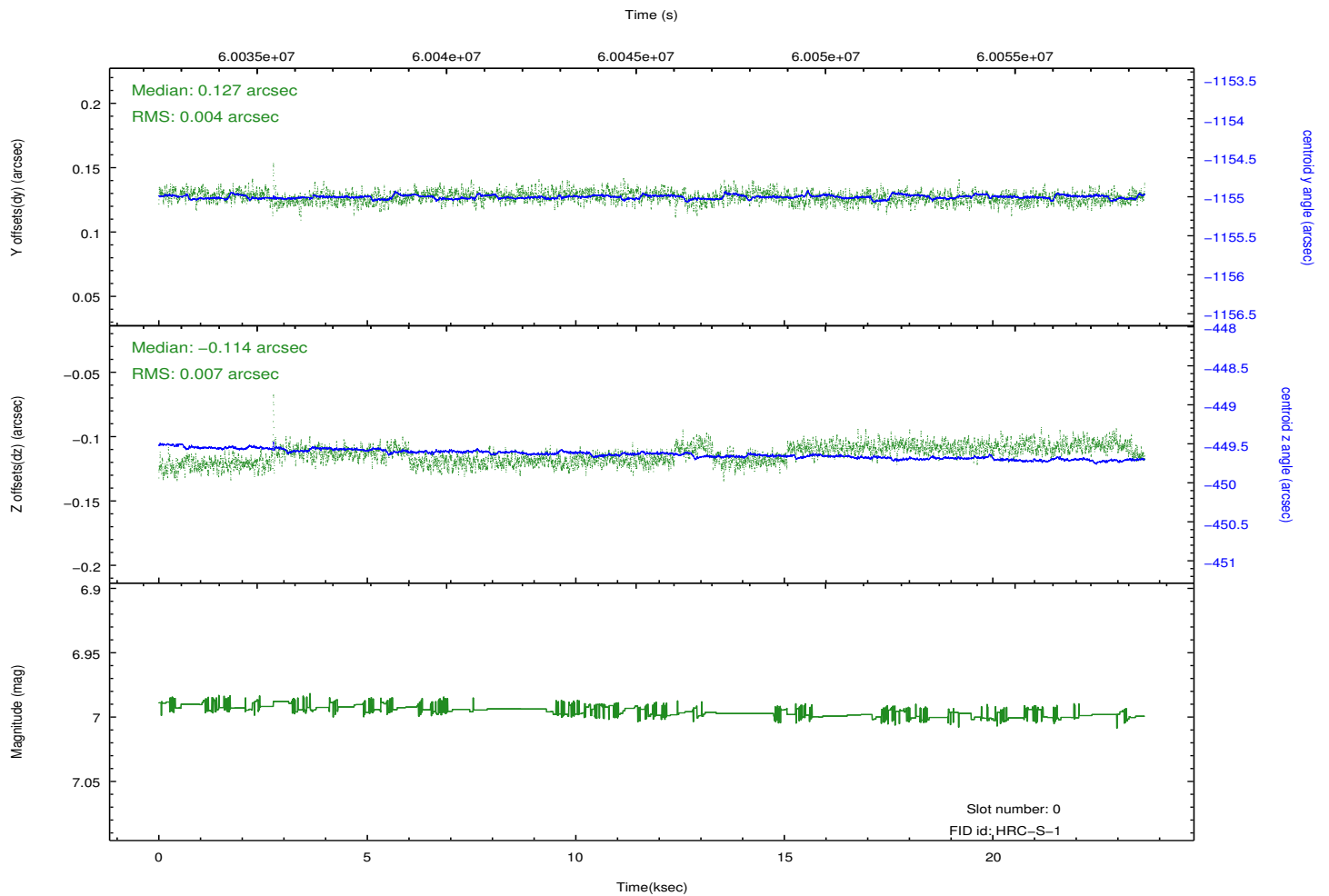
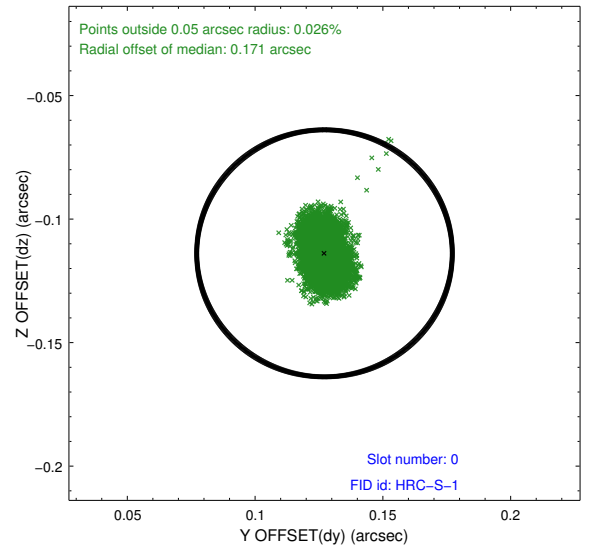
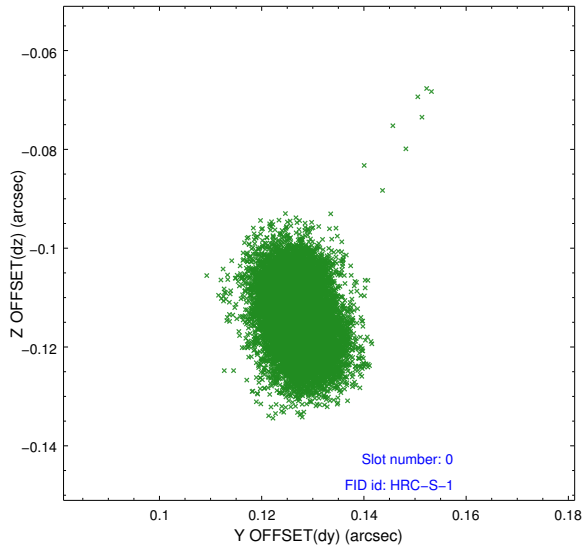


## 2.4.5 Slot 7

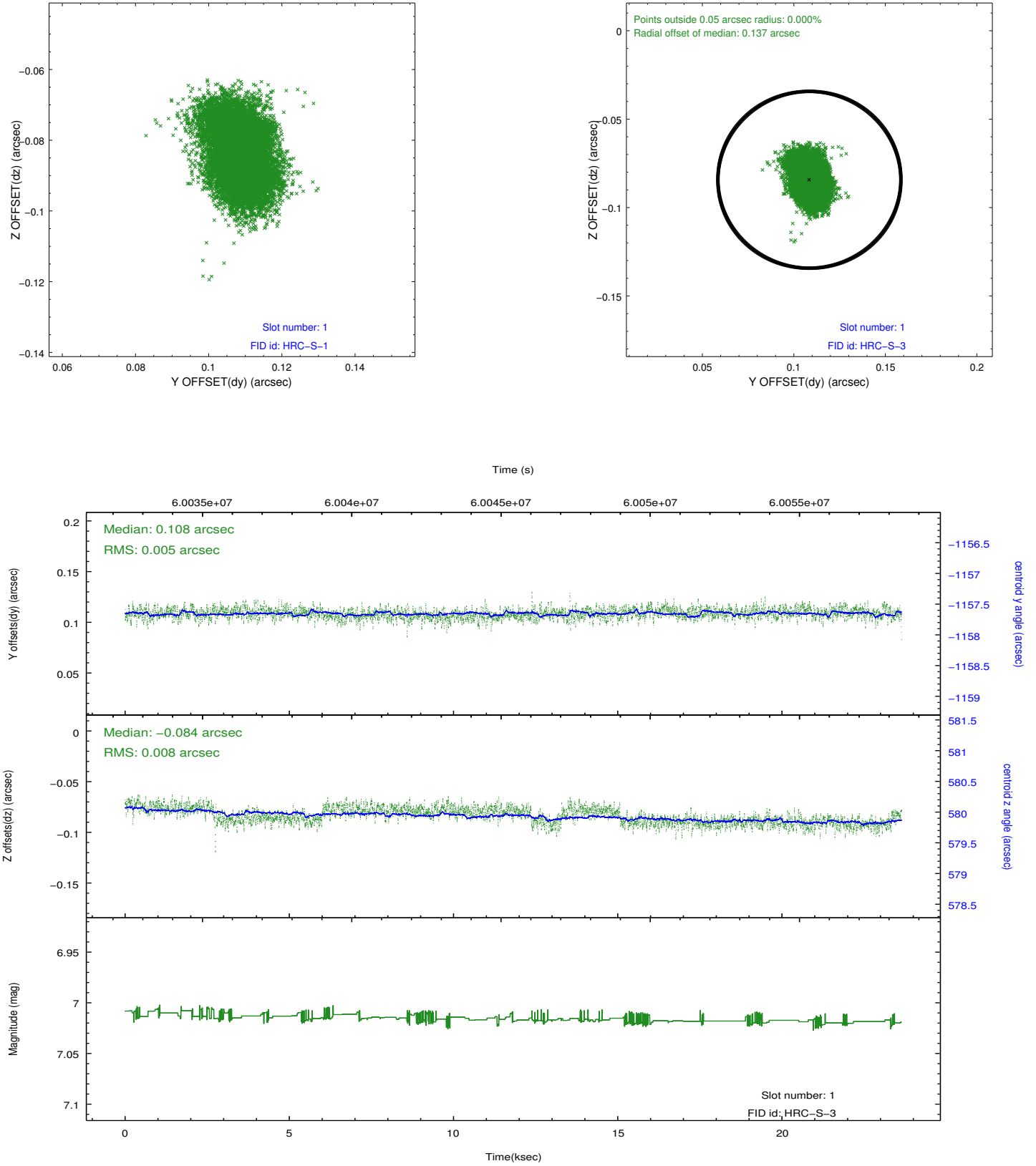


## 2.5 FID Slots

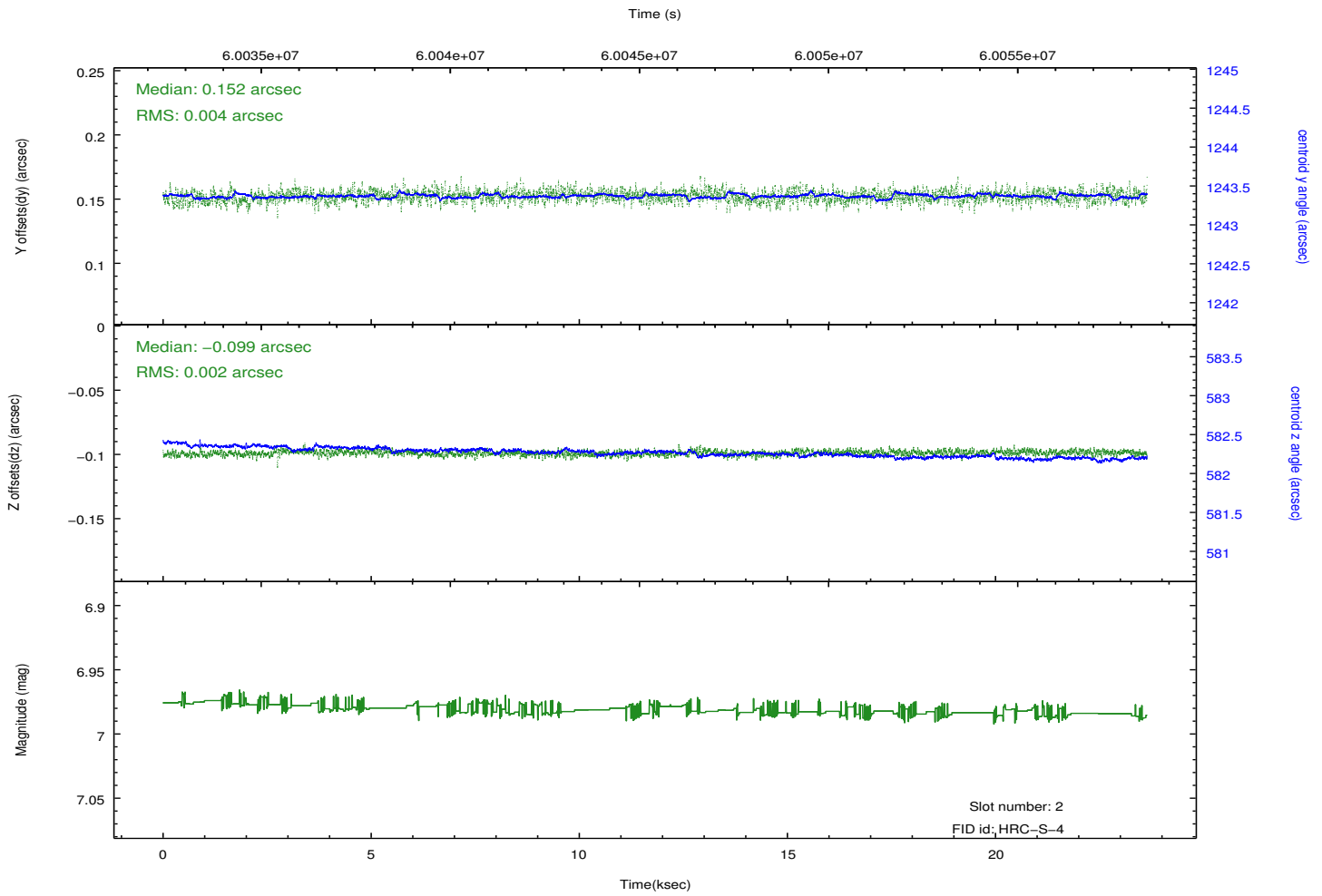
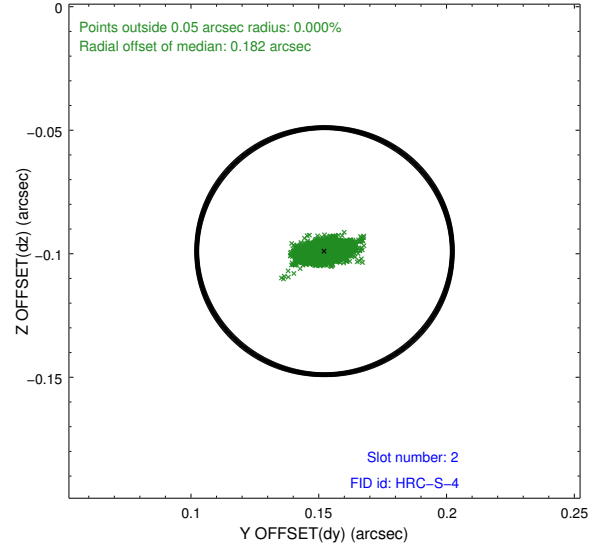
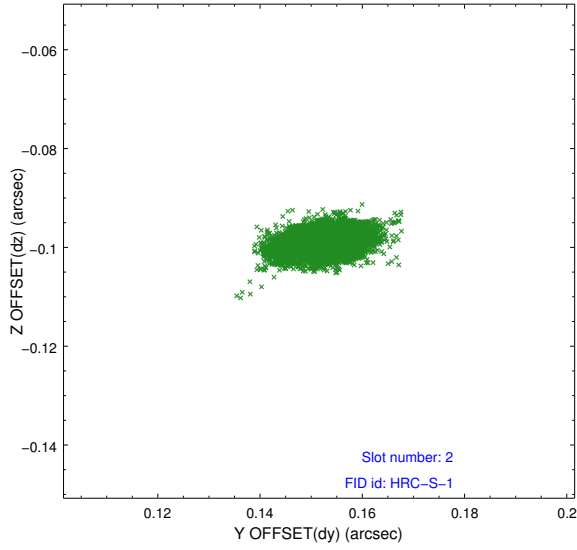
### 2.5.1 Slot 0



## 2.5.2 Slot 1

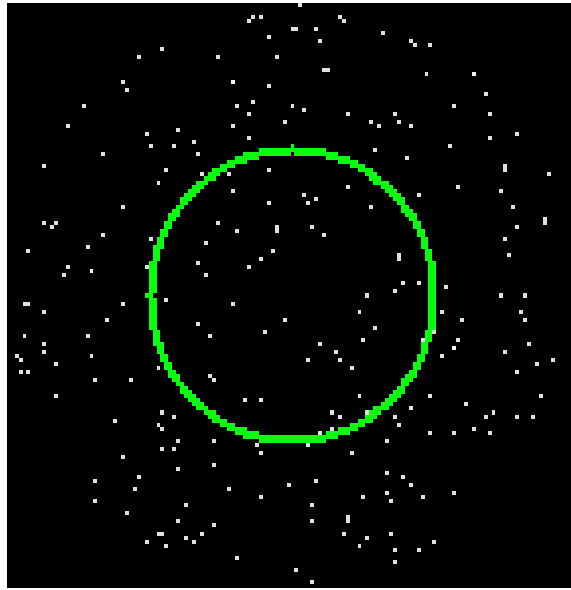


### 2.5.3 Slot 2

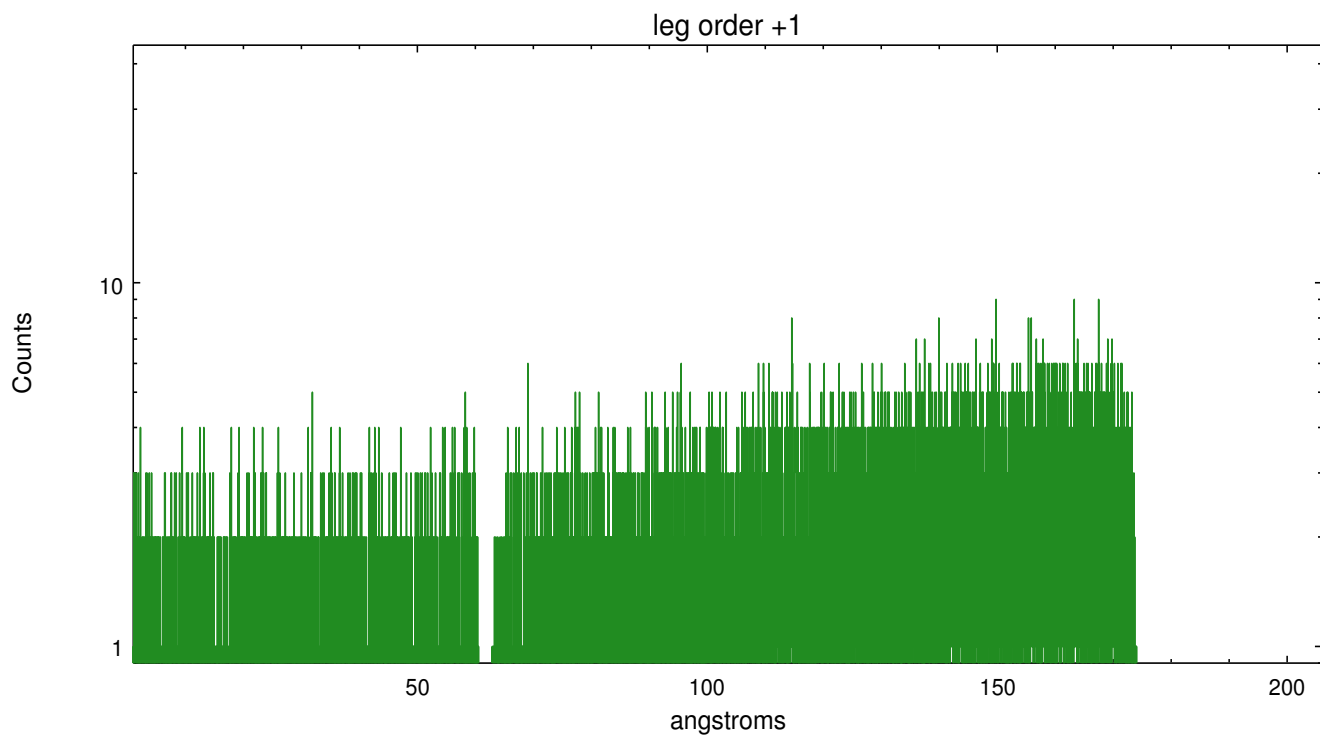
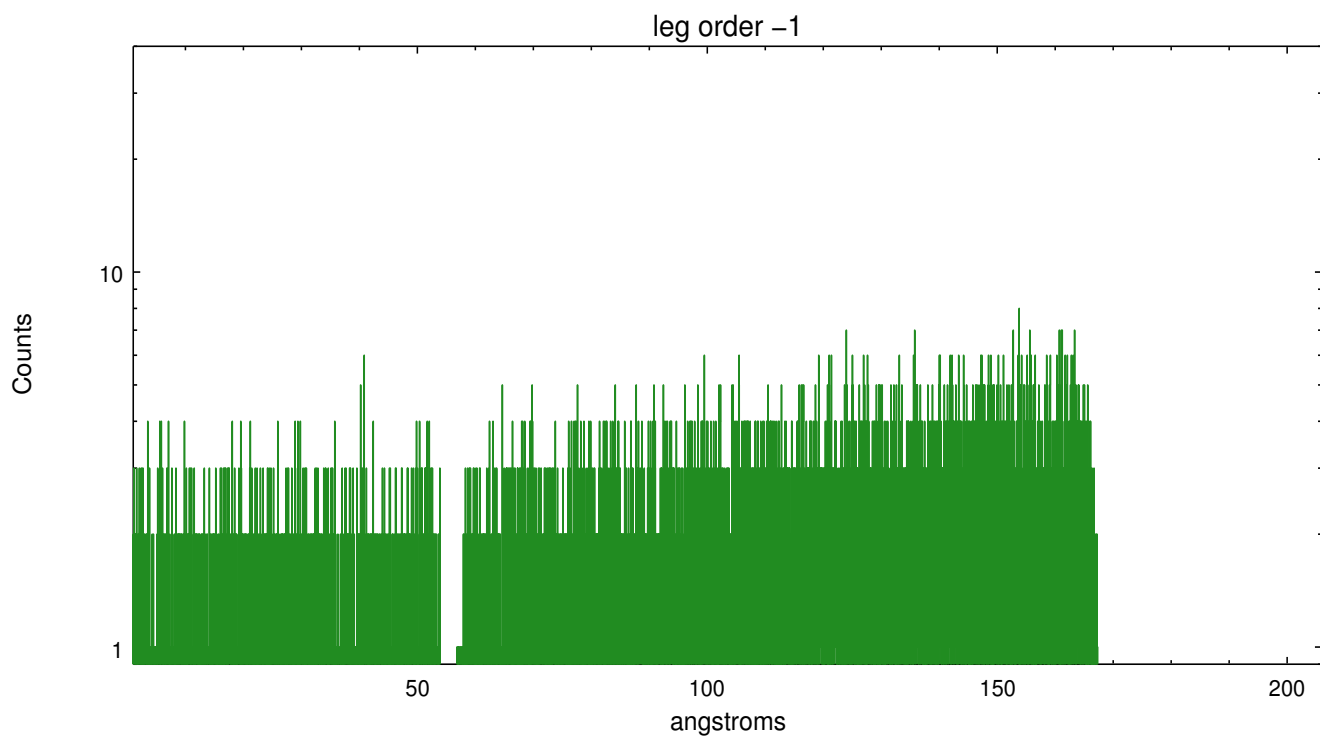


## 3 Gratings

### 3.1 LETG Arm



LETG Zero Order



# A Summary

## A.1 Status

V&V Scientist	Joy Nichols
V&V Date (YYYY-MM-DD)	2010.05.13
V&V Edition	1
V&V Disposition and Status	OK
V&V Charge Time	23.418

## A.2 Comments

Extraction of the spectral data has been done in sky coordinates with default parameters. No zeroth order position was detected since the target is moving, so the pointing direction was taken as the initial position of the target. The extracted spectral data are INCORRECT. In order to use the data from this observation, the event positions must be placed in the coordinate system of the moving target, for example with `sso_freeze` in CIAO. Then the extraction of the spectral data should be done starting at Level 1.5 processing. Some manual intervention may be required to identify the most appropriate position for the zeroth order target position.