

V&V Reference Report

L2 ASCDS Version : 8.5.1.1

Observation 15465 - L2 Version 2
Chandra X-Ray Center

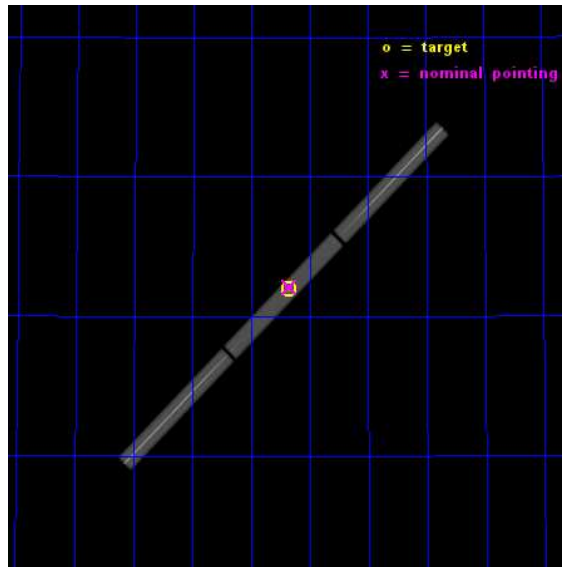
L2 Processing Date : Dec 1 2014

Contents

1	Front	2
2	OBI	3
2.1	OBI	3
2.1.1	Images	3
2.1.2	Parameters	4
2.1.3	Events	4
2.2	Compared Parameters	5
2.3	Aspect	6
2.4	Star Slots	9
2.4.1	Slot 3	9
2.4.2	Slot 4	10
2.4.3	Slot 5	11
2.4.4	Slot 6	12
2.4.5	Slot 7	13
2.5	FID Slots	14
2.5.1	Slot 0	14
2.5.2	Slot 1	15
2.5.3	Slot 2	16
3	Gratings	17
3.1	LETG Arm	17
A	Summary	19
A.1	Status	19
A.2	Comments	19

1 Front

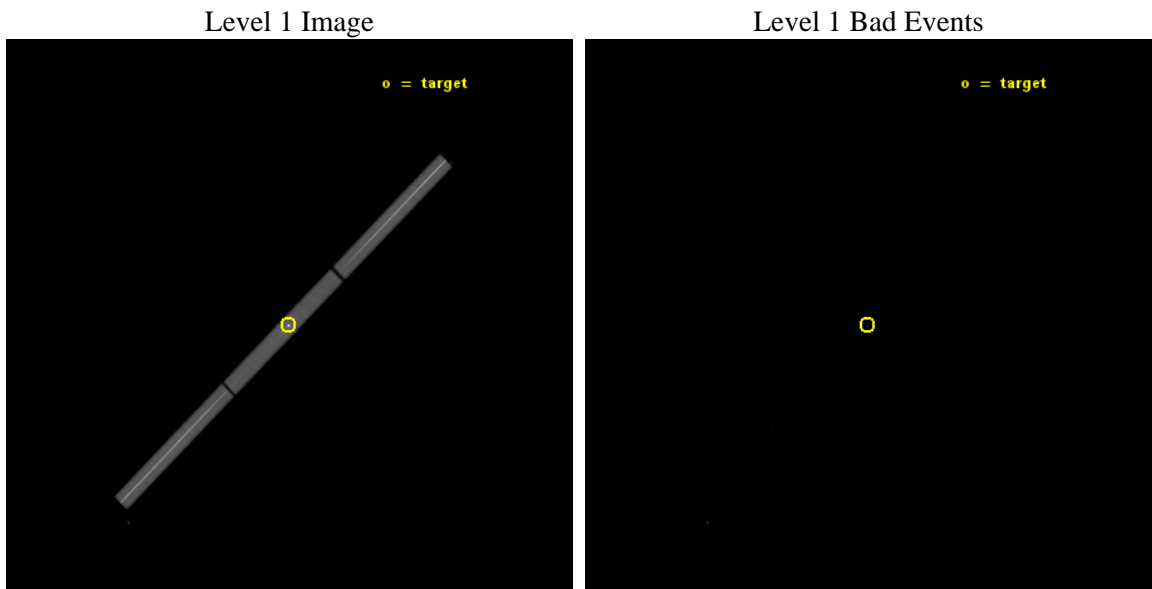
seq_num	291144	Sequence number
obs_id	15465	Observation id
title	AO-14 LETG/HRC-S Calibration Observations of HZ43	Proposal title
observer	Dr. CXC Calibration	Principal investigator
object	HZ43	Source name
ra_targ	199.090417	Observer's specified target RA [deg]
dec_targ	29.098306	Observer's specified target Dec [deg]
ra_nom	199.08663366682	Nominal RA [deg]
dec_nom	29.101669896658	Nominal Dec [deg]
roll_nom	134.60921354901	Nominal Roll [deg]
revision	2	Processing version of data
ontime	20181.226090848	[s]
livetime	19976.737415553	Ontime multiplied by DTCOR
l2events	1950855	Number of level 2 events



2 OBI

2.1 OBI

2.1.1 Images



2.1.2 Parameters

obi_num	0	Obi number	sched_exp_time	20000.000000	[s] Scheduled observation exposure time
ascdsver	10.3	Processing system revision	ontime	20181.226090848	[s]
caldsver	4.6.4	 	l1events	2420354	Number of level 1 events
date	2014-12-02T03:09:06	Date and time of file creation	tgmethod	TGDETECT	Method used to create src1a file
revision	2	Processing version of data	zo_pos	(32676.79, 32677.92)	src1a sky pixel position

2.1.3 Events

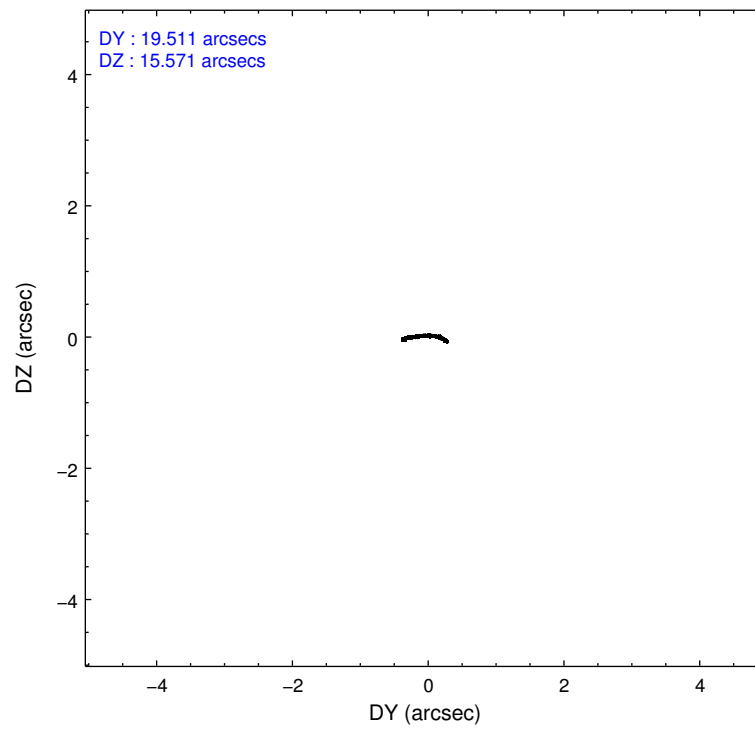
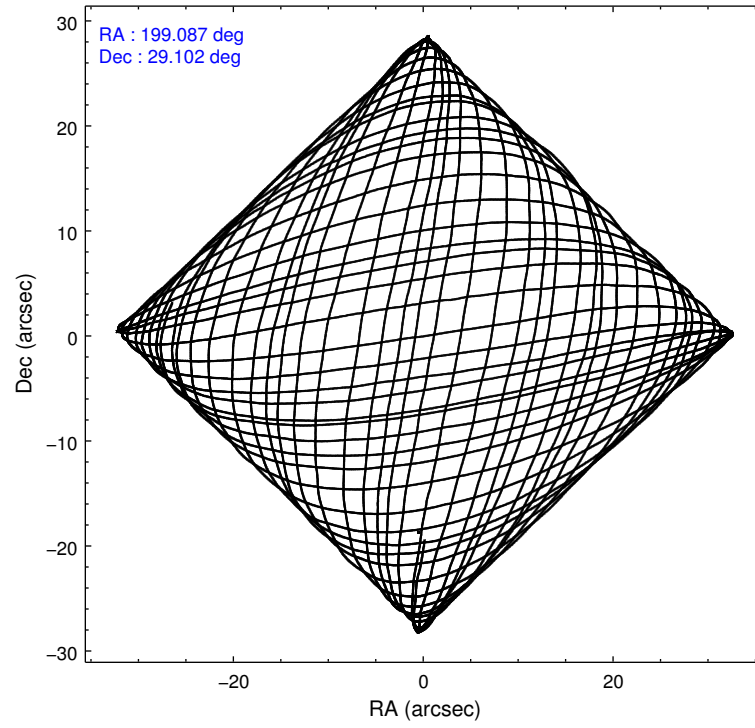
Level 1 Events

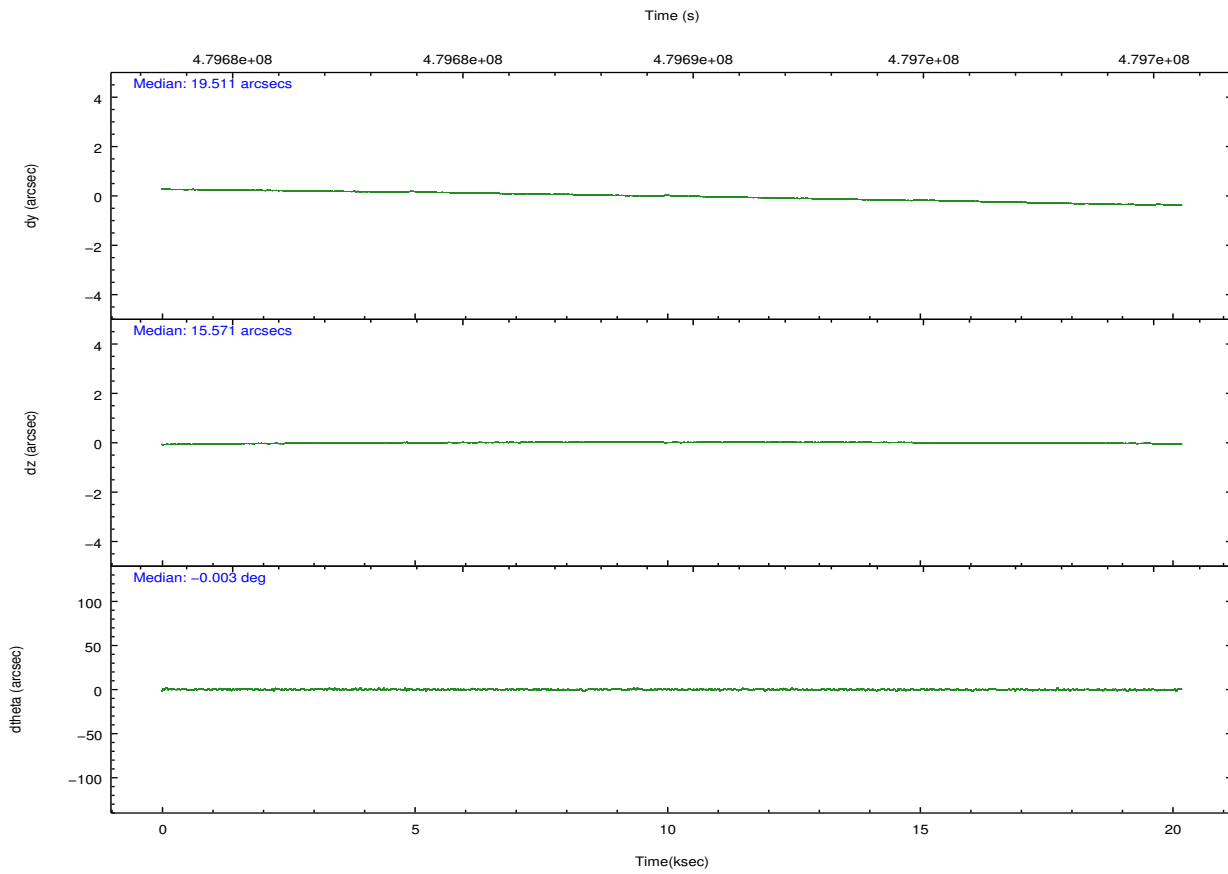
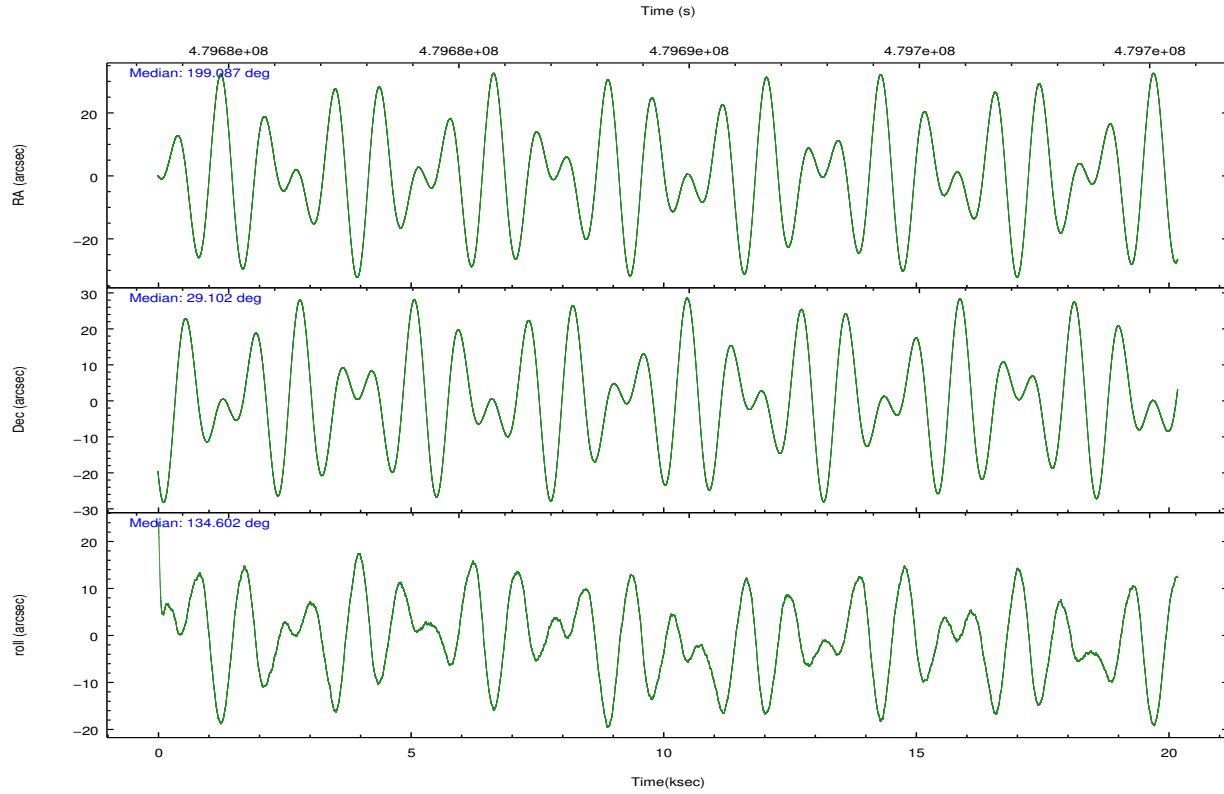
	segment 1	segment 2	segment 3
level 1 events	842628	731081	846645
rejected events	4376	3880	4168
rejected %	0%	0%	0%

2.2 Compared Parameters

Parameter	Planned	Actual	Parameter	Planned	Actual
Instrument	HRC	HRC	Obspar format version number	7	7
Detector	HRC-S	HRC-S	Obspar file type	PREDICTED	ACTUAL
Grating	LETG	LETG	Obspar update status	NONE	UPDATED
Data mode	OBSERVING	OBSERVING			
Observation mode	POINTING	POINTING			
[deg] Pointing RA	199.118710	199.08663366682			
[deg] Pointing Dec	29.095507	29.10166989665779			
[deg] Pointing Roll	134.526274	134.6092135490084			
[mm] SIM focus pos	-1.429586	-1.428180813131781			
[mm] SIM defocus	0.1037507710433287	0.1051558262725154			
[mm] SIM translation stage pos	250.455976	250.466033080201			
[mm] SIM translation stage offset	0	-0.01005468664627074			
[s] Observation start time (MET)	479679627.184000	479679251.50612			
Observation start date	2013-03-14T20:19:20	2013-03-14T20:14:11			
[s] Observation end time (MET)	479699627.184000	479700614.04478			
Observation end date	2013-03-15T01:52:40	2013-03-15T02:10:14			

2.3 Aspect





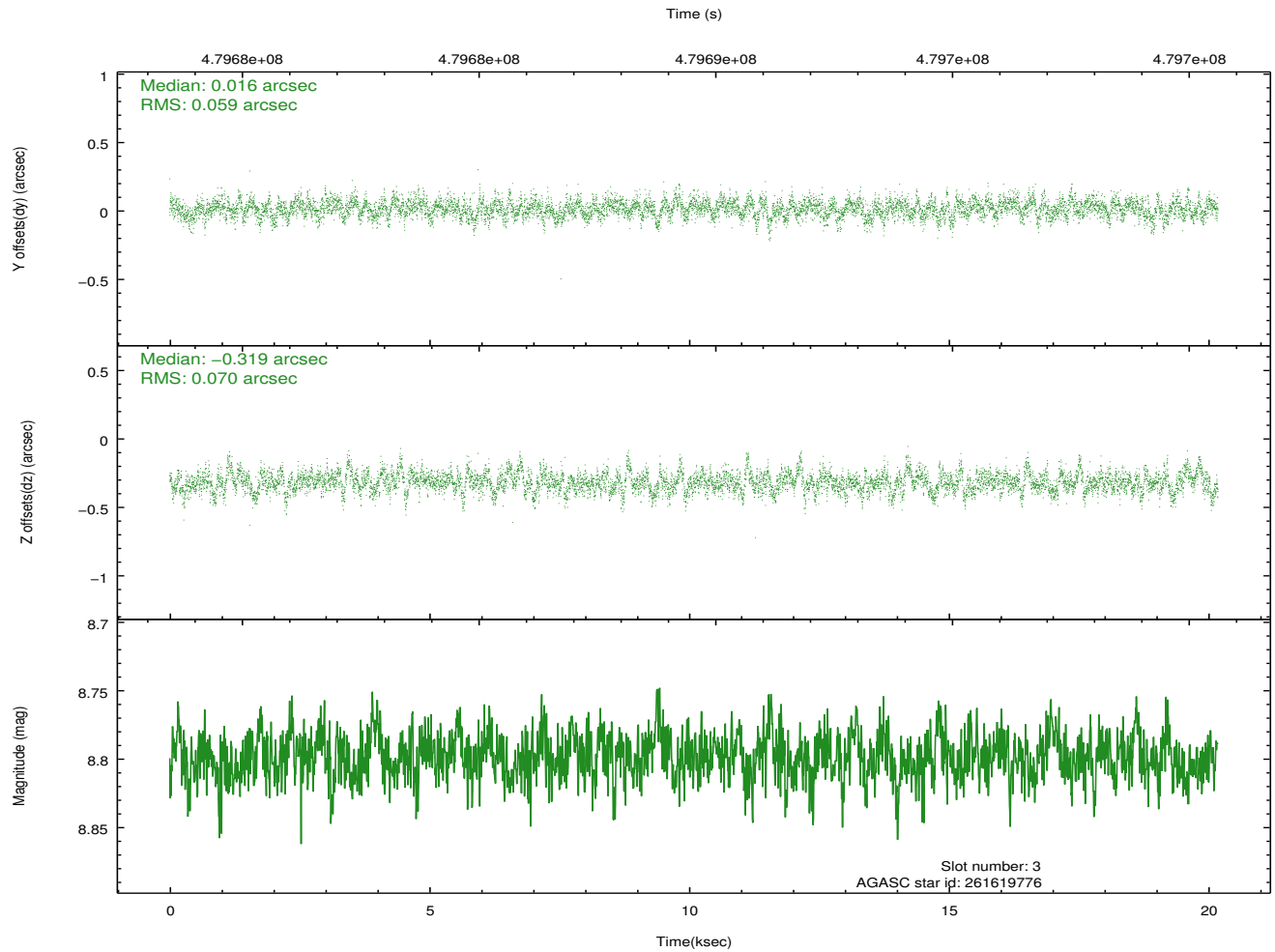
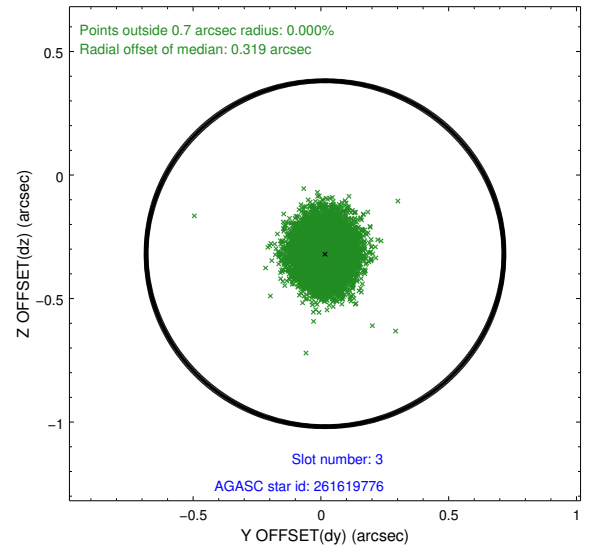
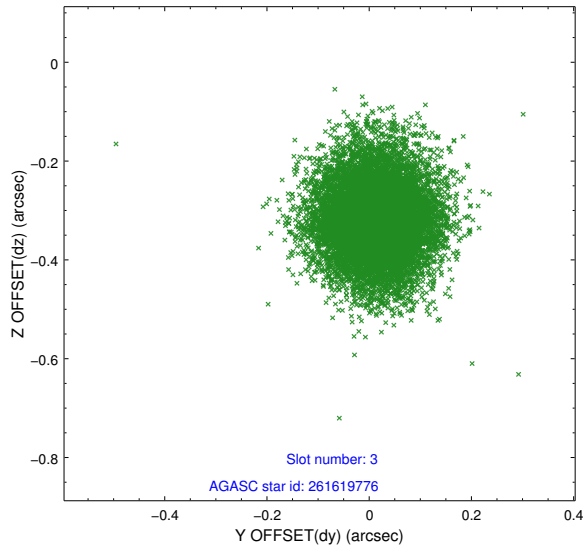
Slot Statistics

slot	status	used	id	mag	n_pts	med_dy	med_dz	dr1	dr2	ra	dec	mean_y	mean_z
0	FID		HRC-S-1	7.00	4923	0.031	-0.201	0.011	0.017	0.000000	0.000000	-1174.07	-464.48
1	FID		HRC-S-2	6.98	4923	0.245	-0.107	0.010	0.016	0.000000	0.000000	1225.59	-457.15
2	FID		HRC-S-3	7.01	4923	0.113	0.006	0.007	0.012	0.000000	0.000000	-1176.45	565.16
3	GUIDE	used	261619776	8.80	9817	0.016	-0.319	0.096	0.159	198.654383	29.401174	1807.36	264.40
4	GUIDE	used	261621400	6.98	9846	-0.121	-0.246	0.084	0.139	198.901600	28.741982	-425.60	1380.59
5	GUIDE	used	261626376	9.66	9745	0.071	0.060	0.234	0.391	198.947288	29.347445	1025.09	-252.15
6	GUIDE	used	261629720	8.12	9847	0.205	0.300	0.098	0.159	199.236176	29.044452	-389.32	-134.57
7	GUIDE	used	261623040	9.13	9773	-0.180	0.203	0.126	0.214	198.792686	29.757643	2415.37	-945.58

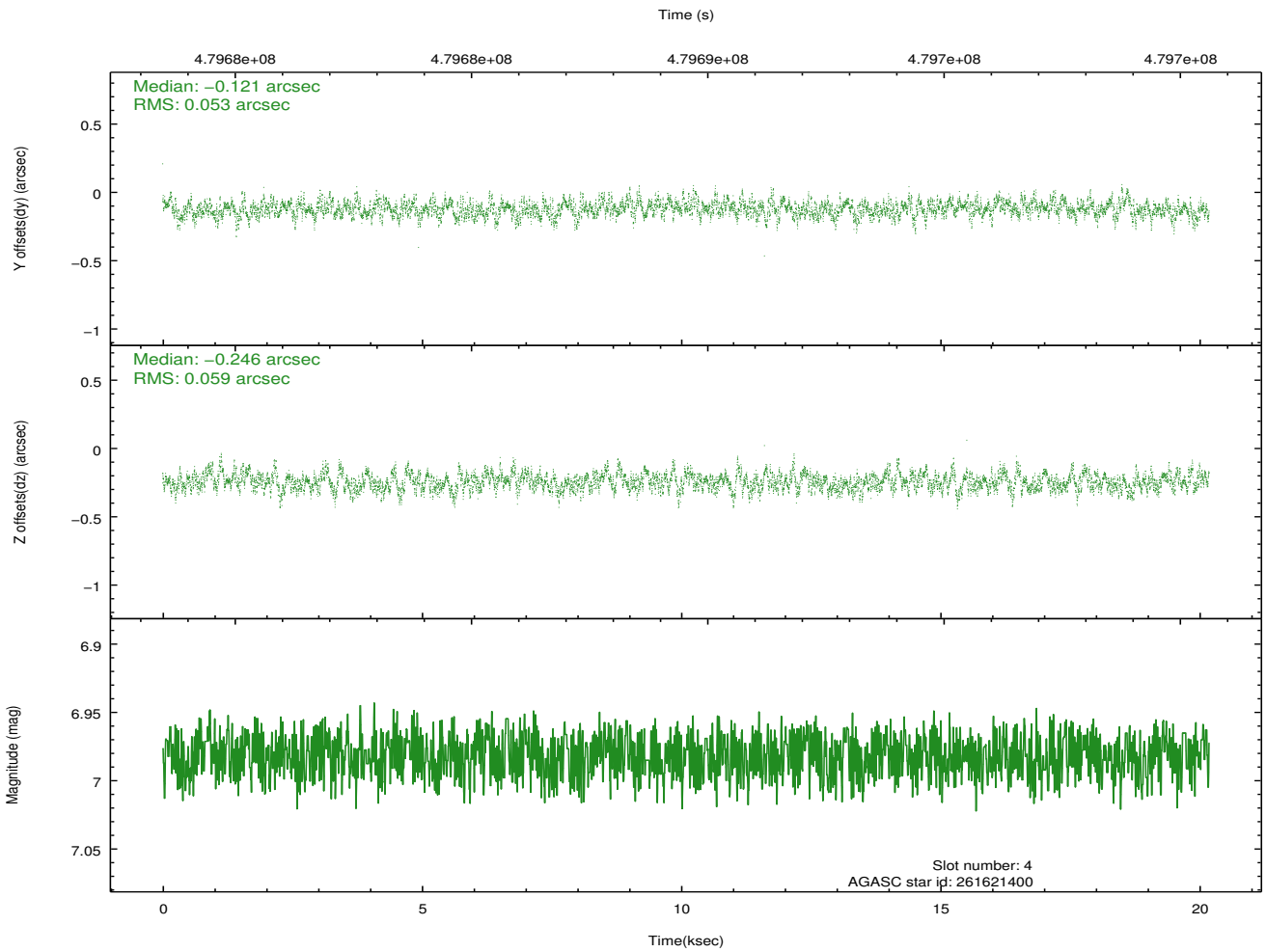
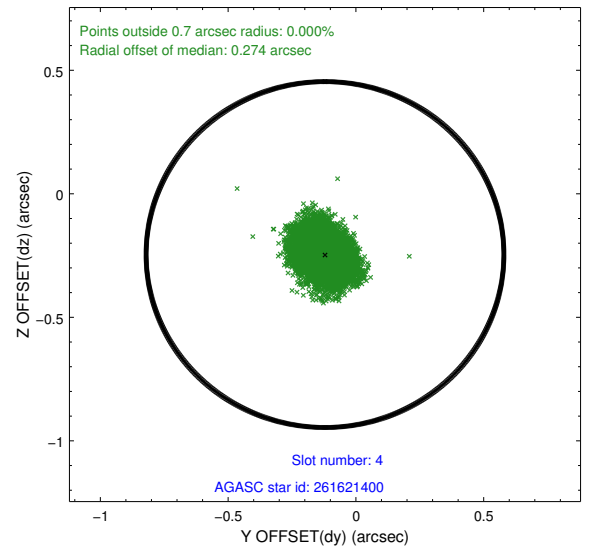
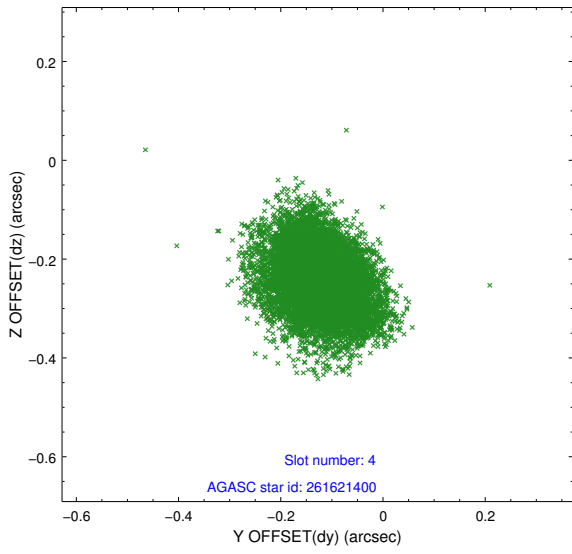
∞

2.4 Star Slots

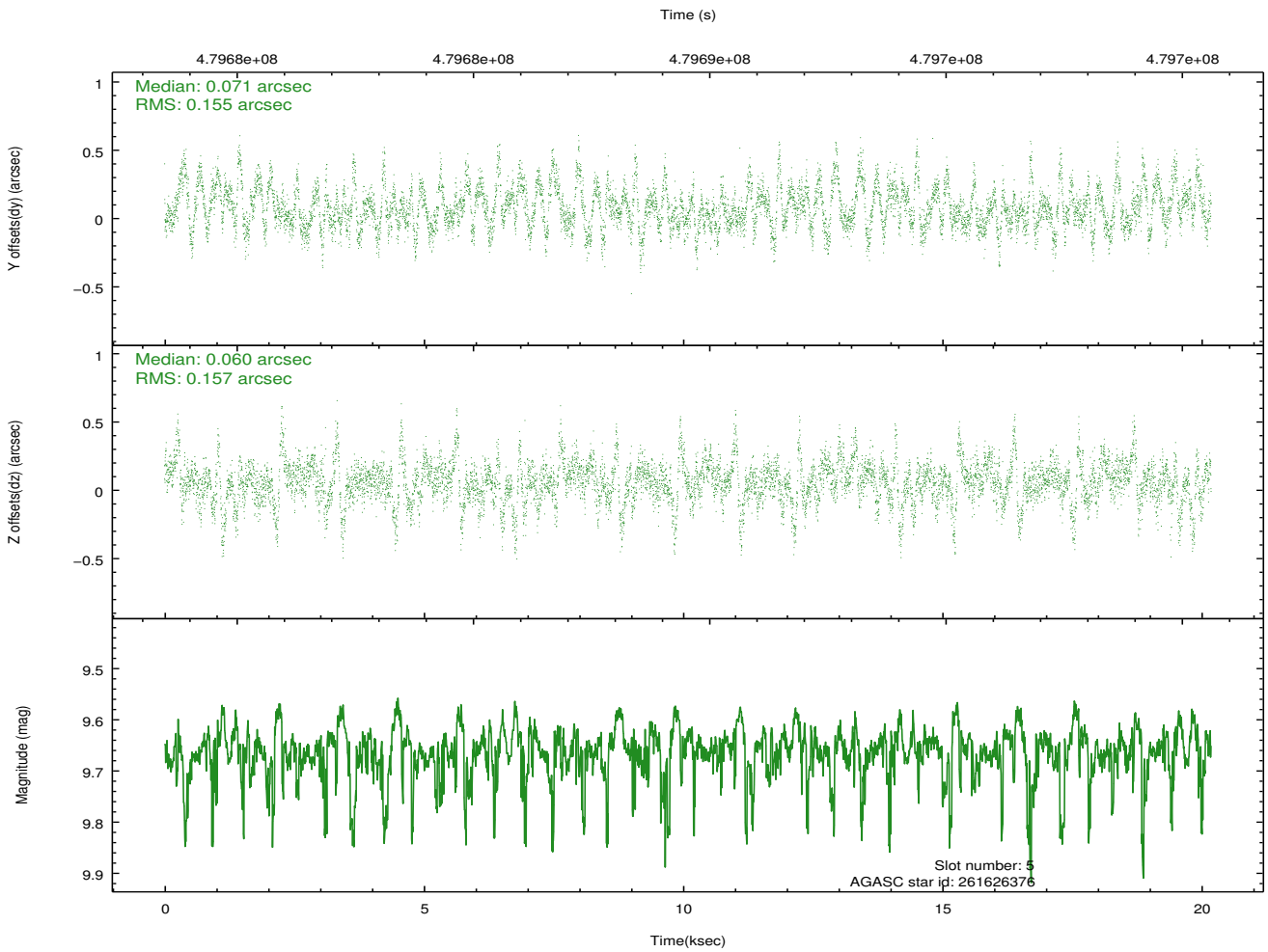
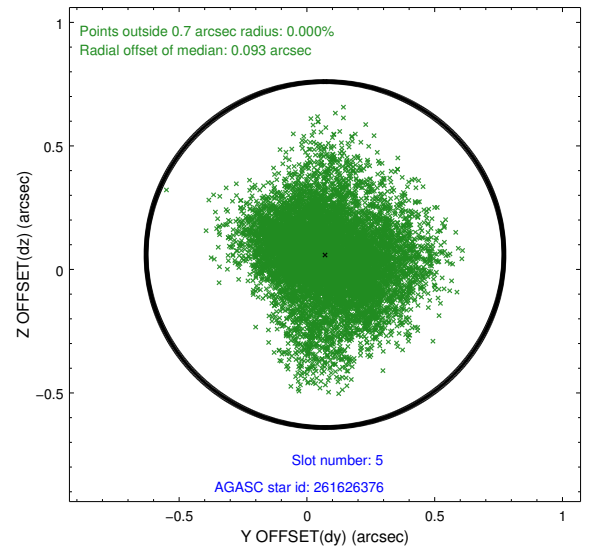
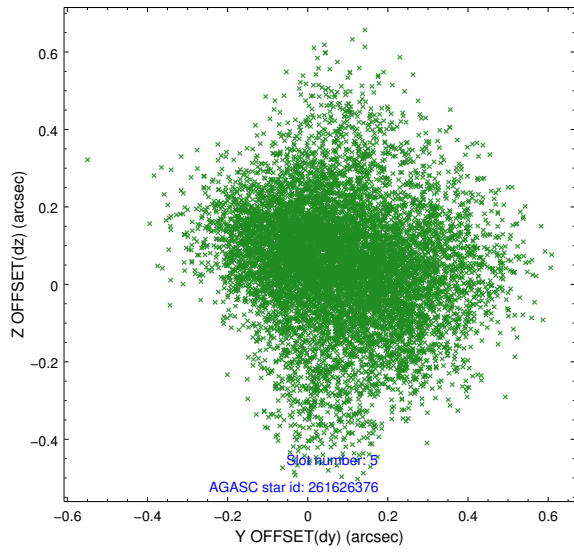
2.4.1 Slot 3



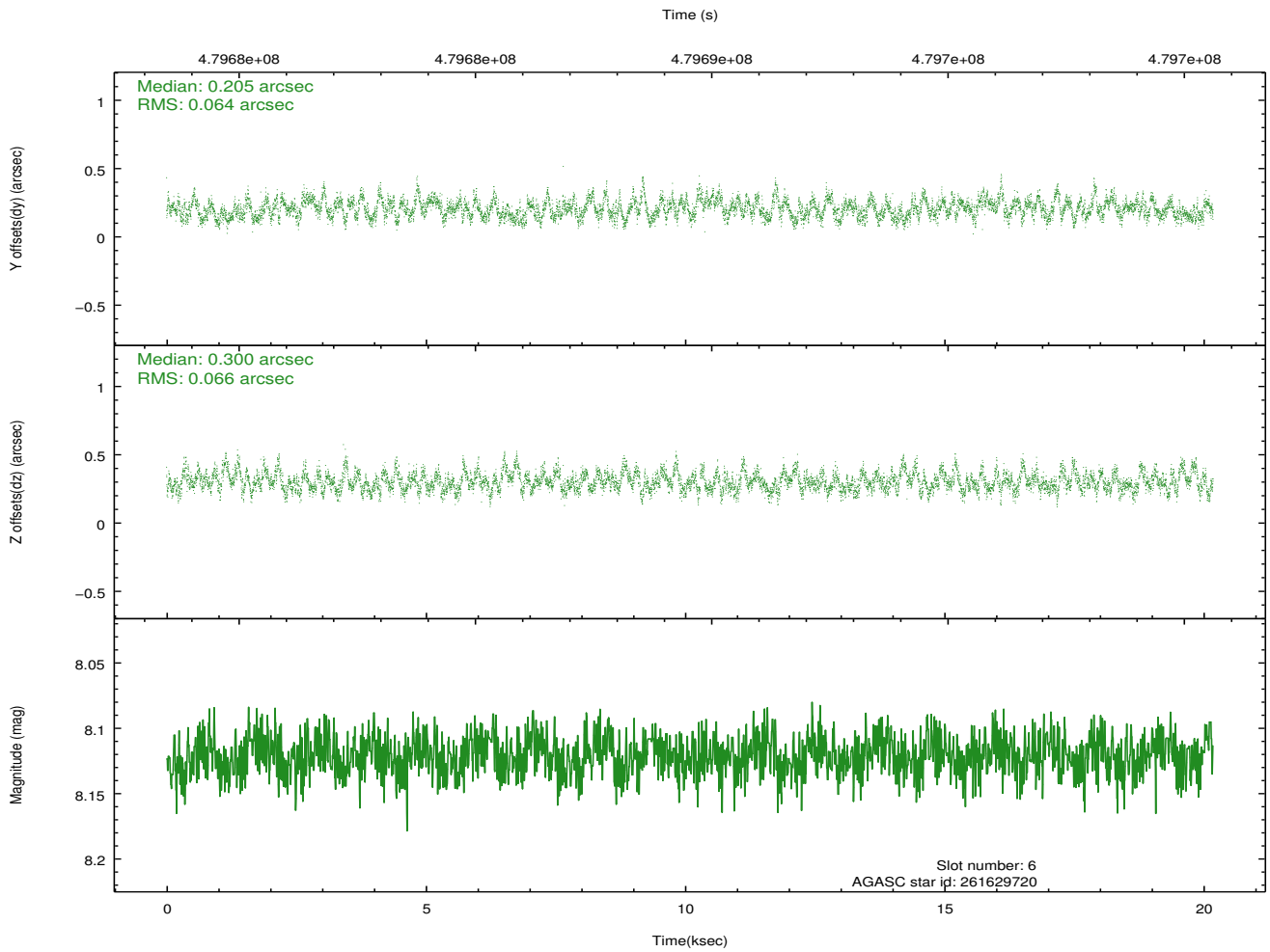
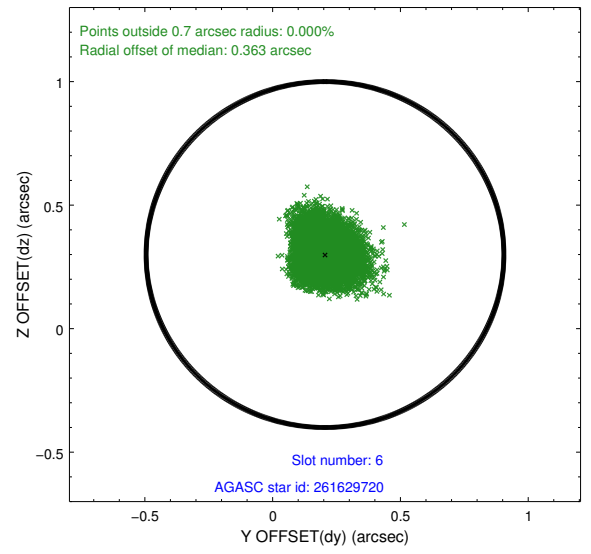
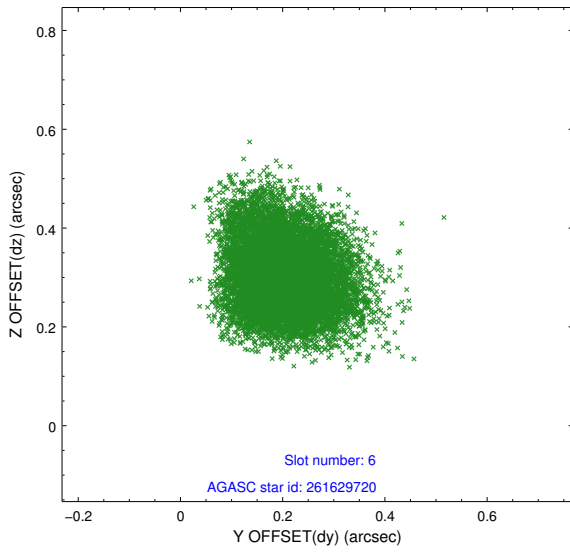
2.4.2 Slot 4



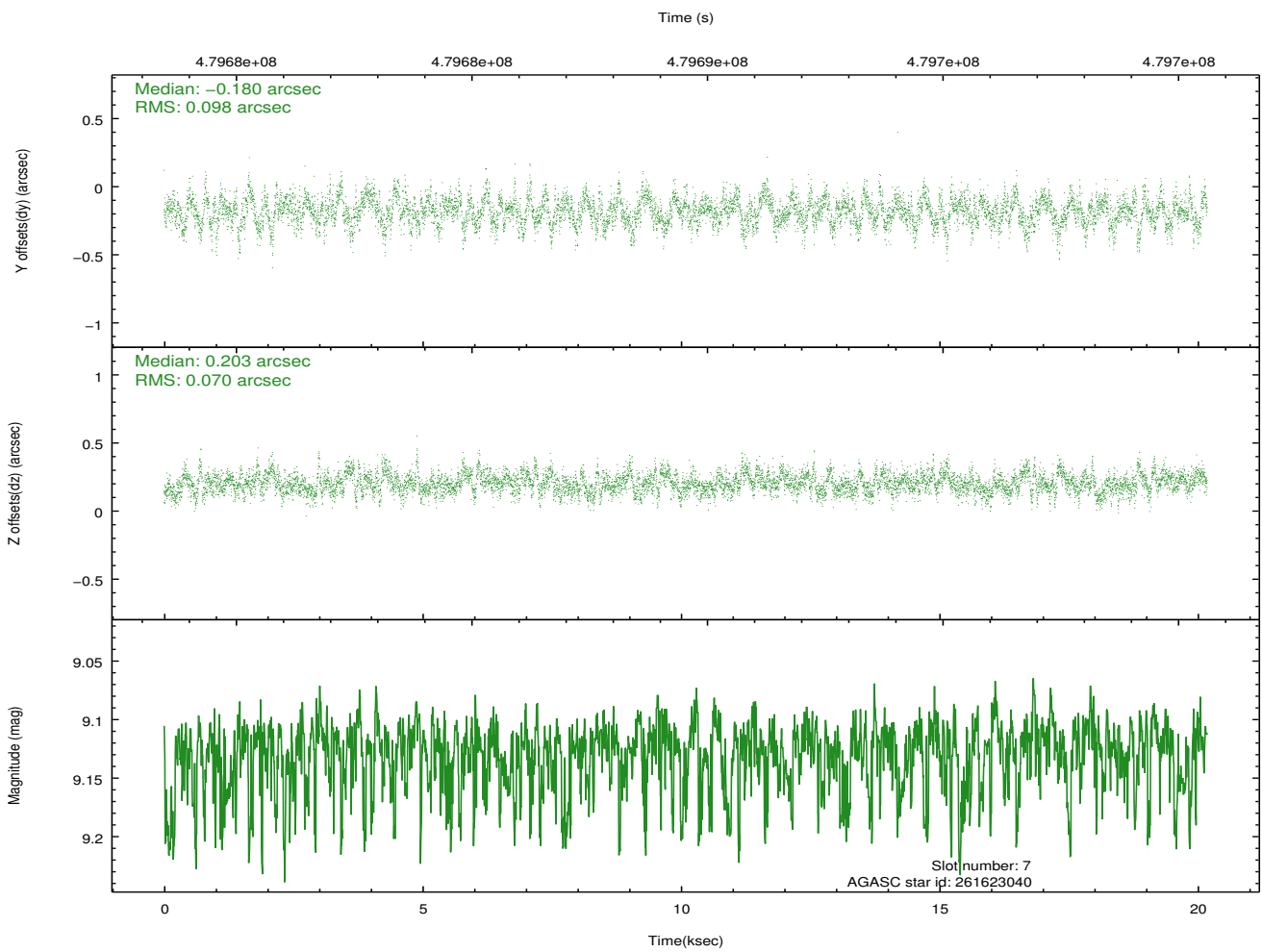
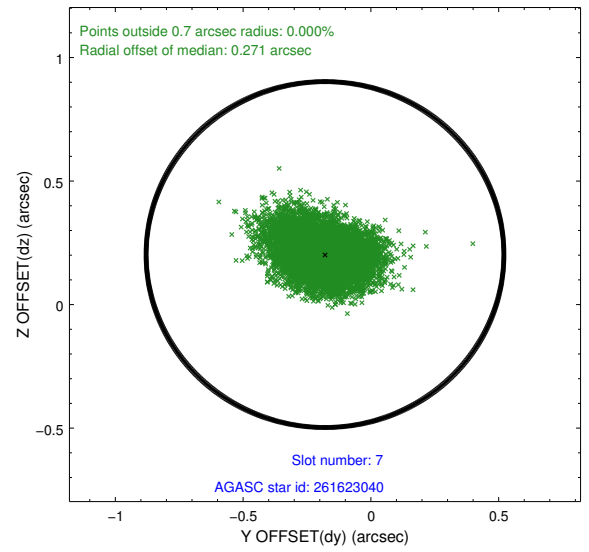
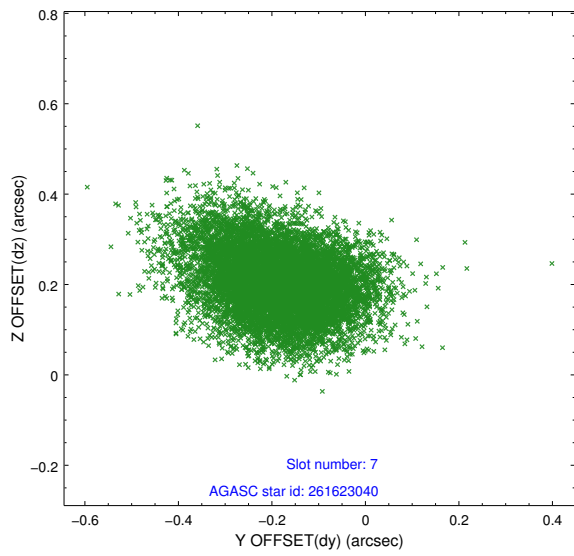
2.4.3 Slot 5



2.4.4 Slot 6

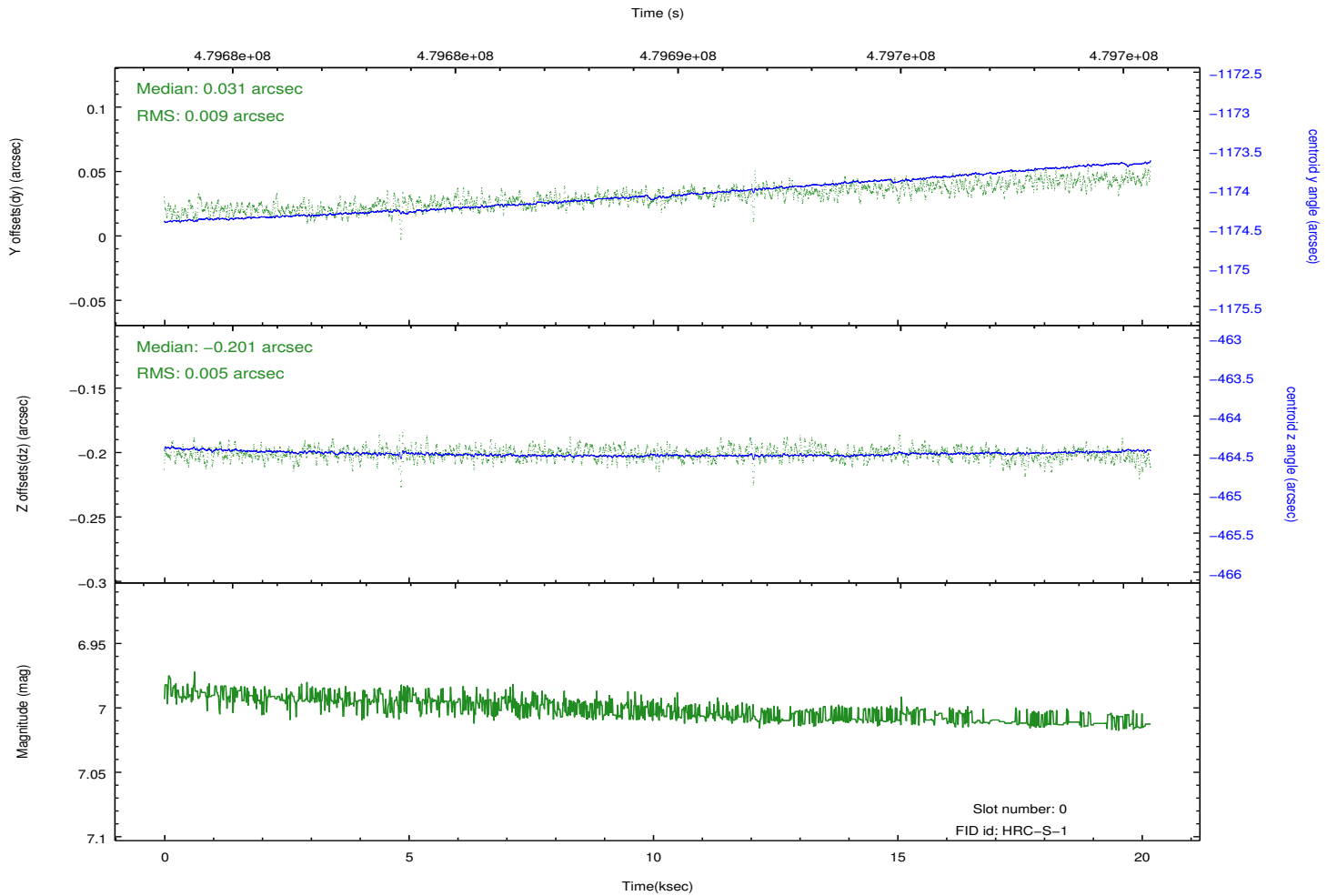
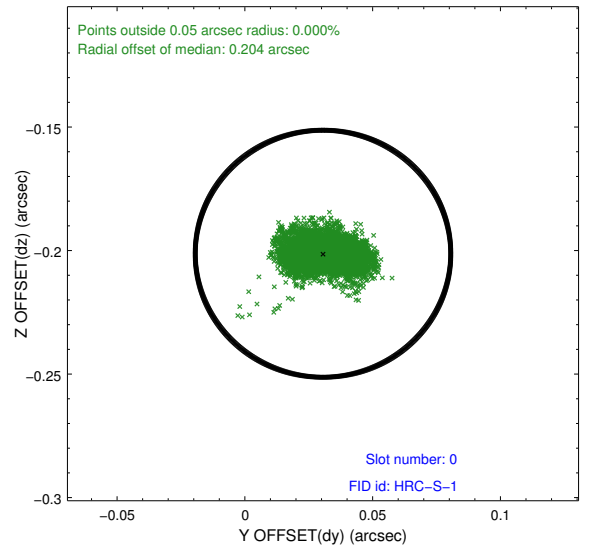
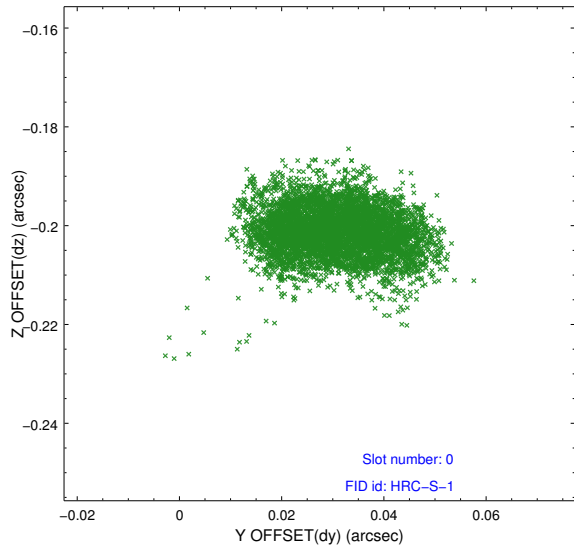


2.4.5 Slot 7

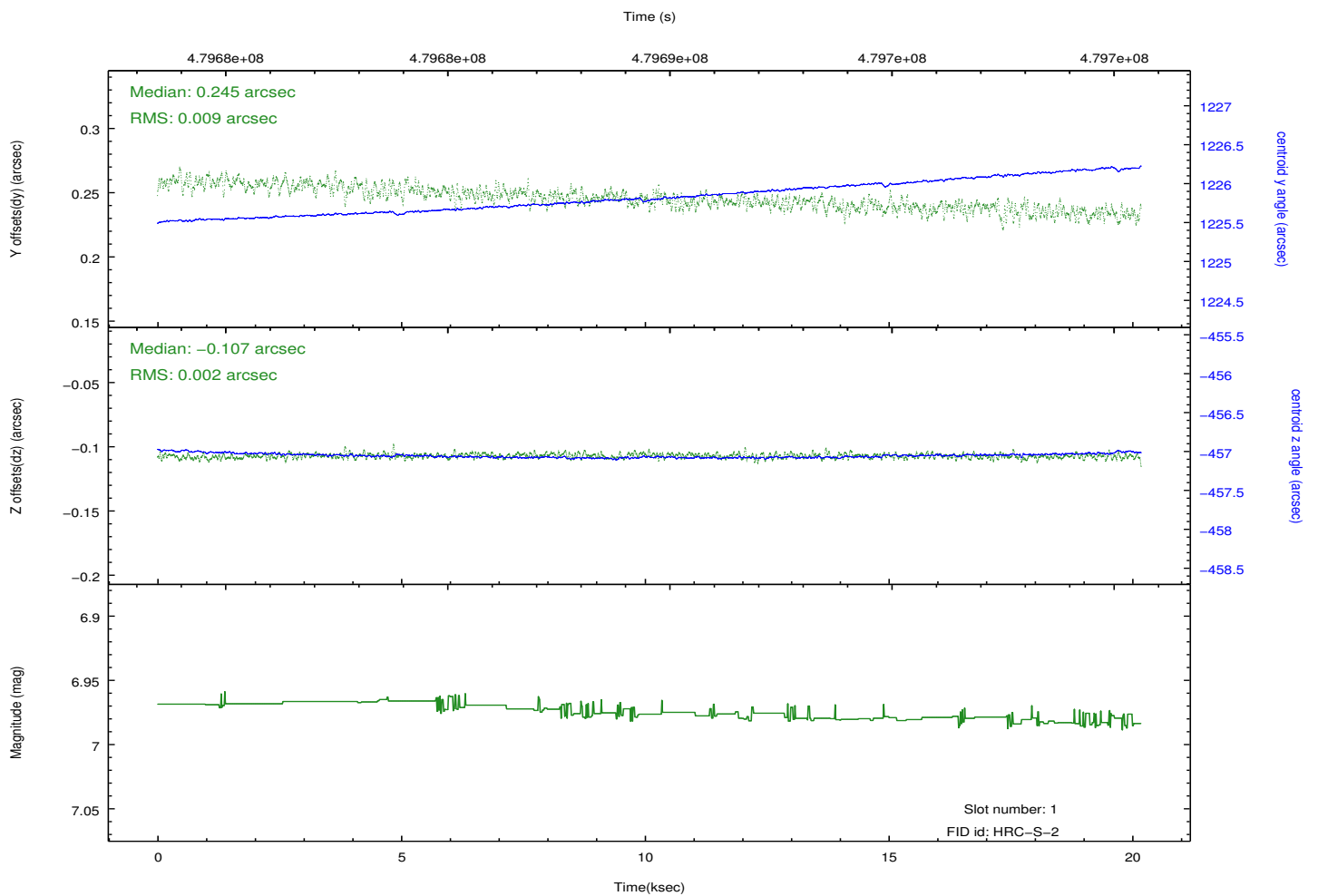
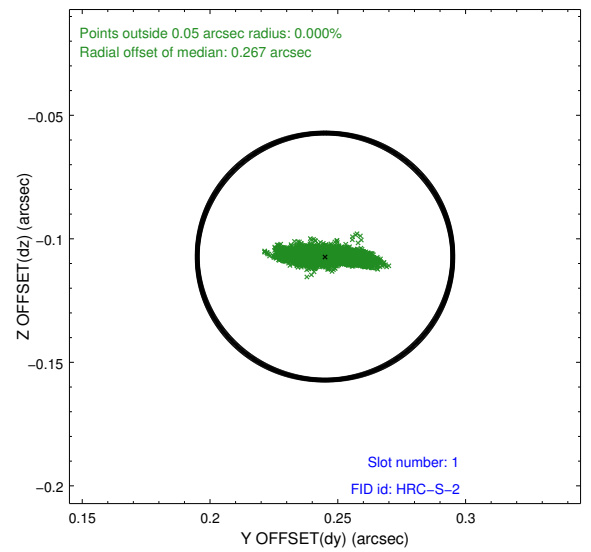
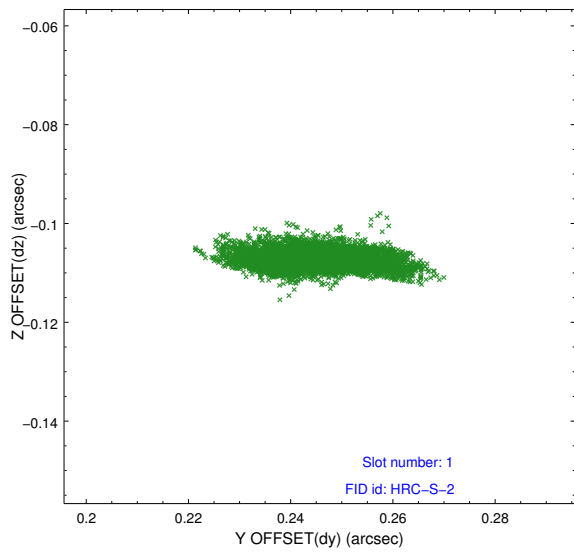


2.5 FID Slots

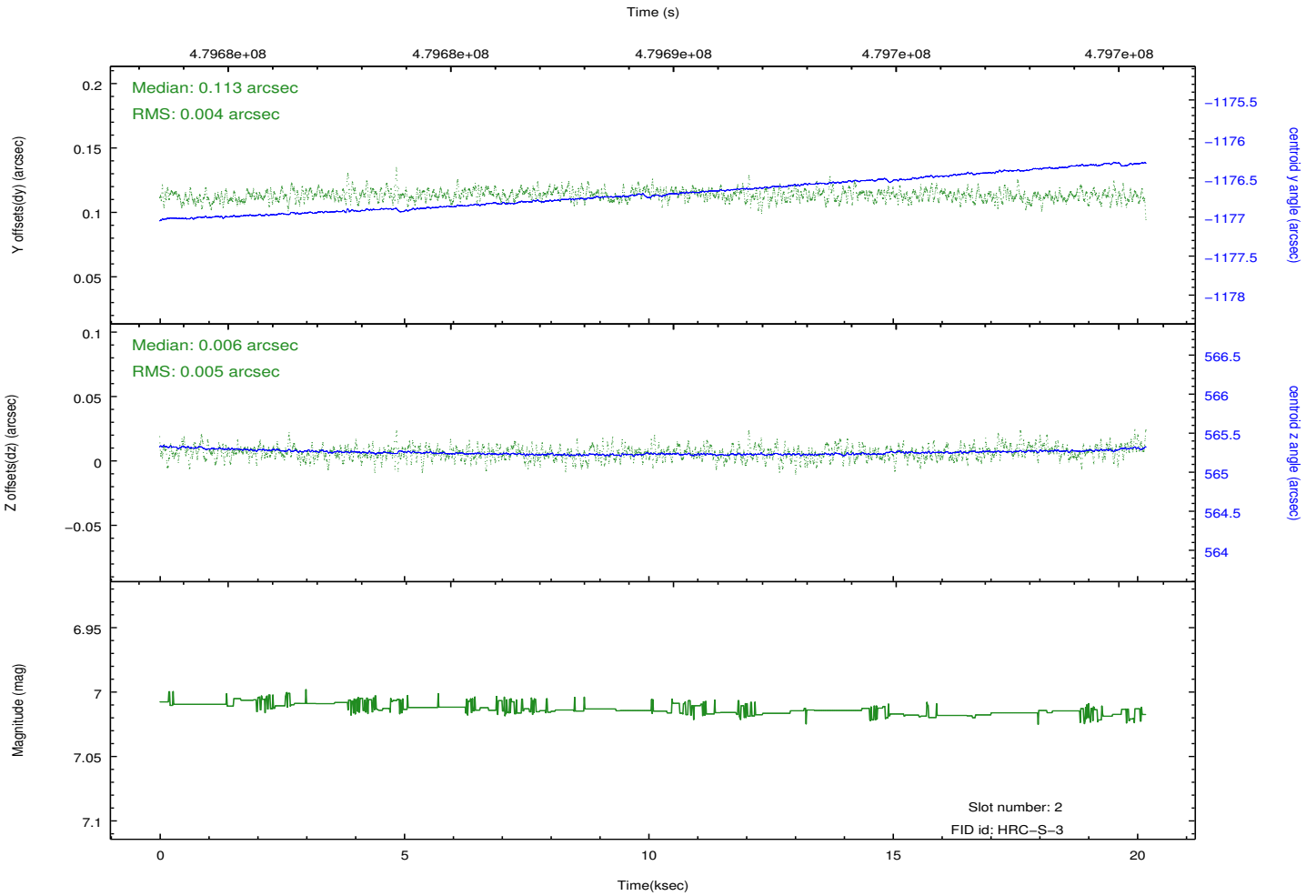
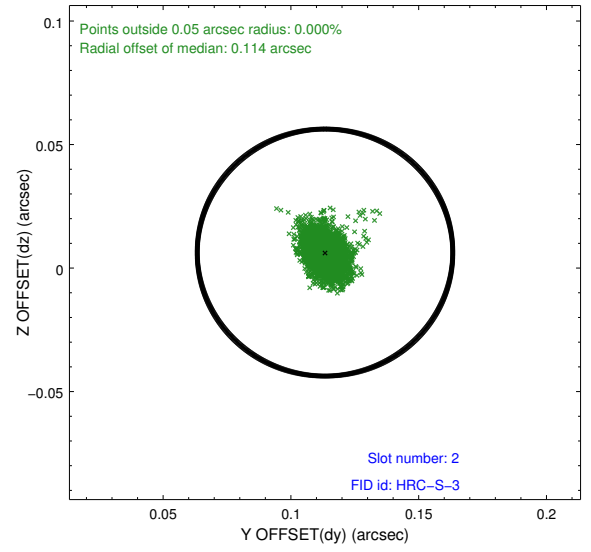
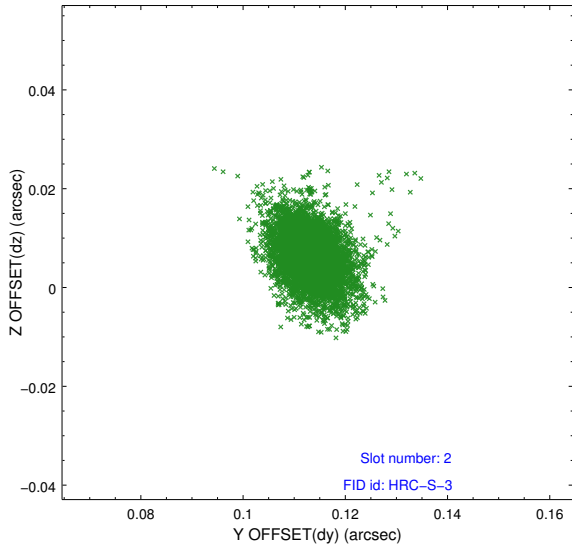
2.5.1 Slot 0



2.5.2 Slot 1

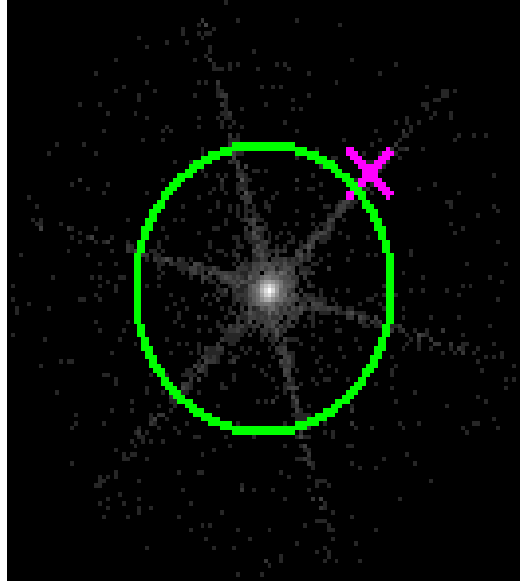


2.5.3 Slot 2

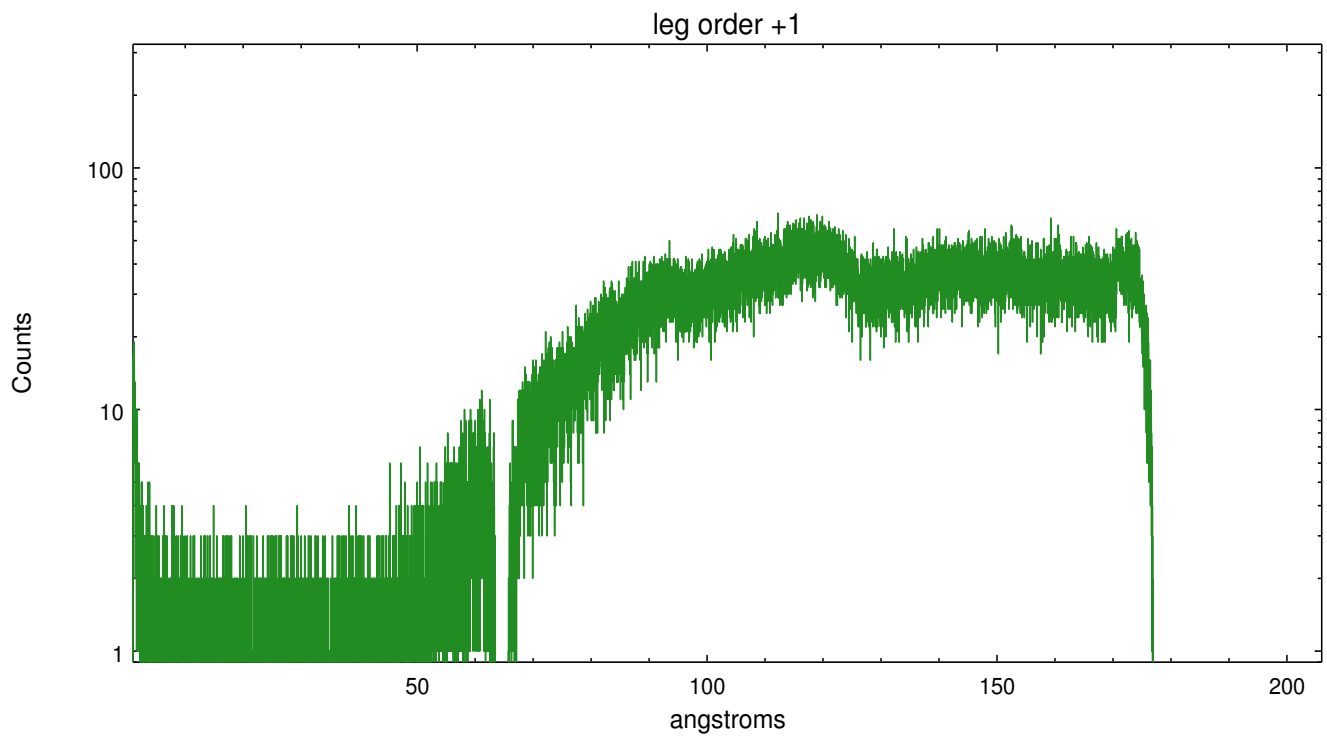
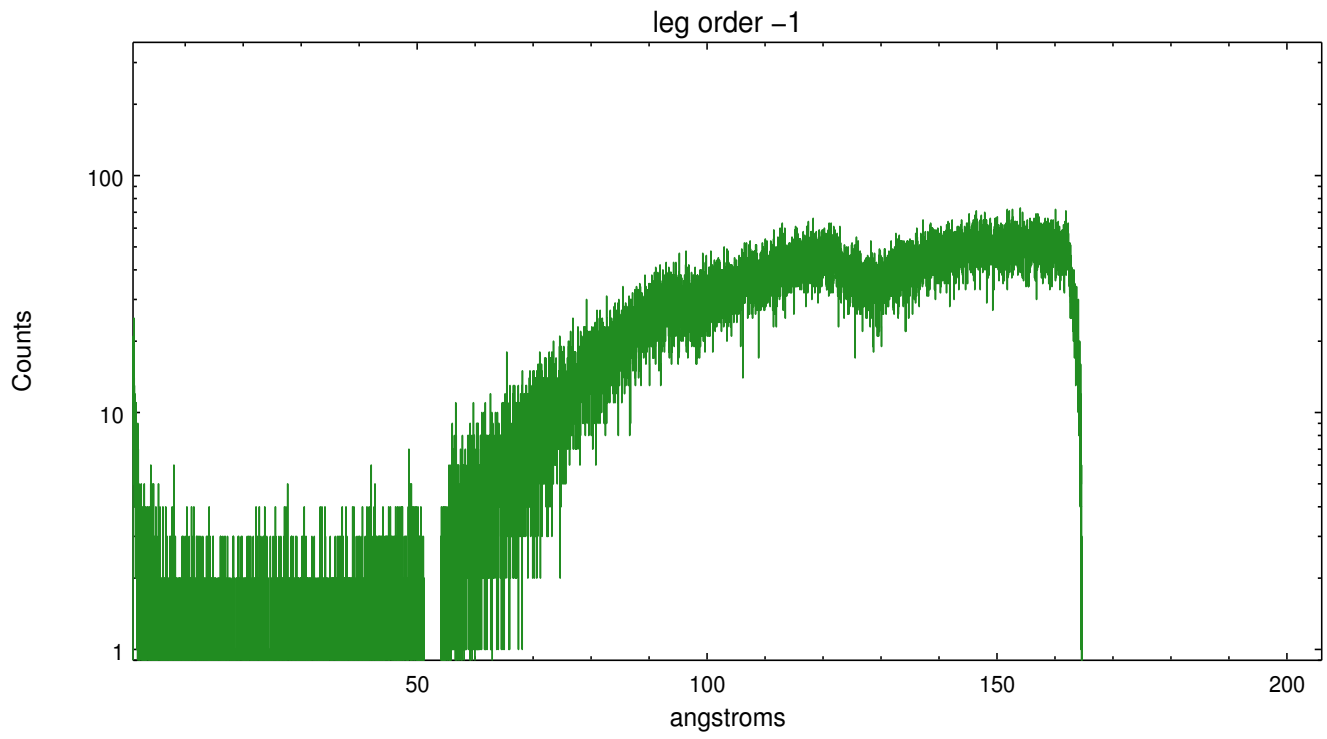


3 Gratings

3.1 LETG Arm



LETG Zero Order



A Summary

A.1 Status

V&V Scientist	Joy Nichols
V&V Date (YYYY-MM-DD)	2015.11.13
V&V Edition	1
V&V Disposition and Status	OK
V&V Charge Time	20.181226090848

A.2 Comments

These data have been reprocessed with new aspect alignment calibration files that correct small mean offsets (up to 0.4 arcsecs) and improve overall astrometric accuracy. The new calibration was determined using data from the time period being reprocessed and was performed using cross-correlation of X-ray sources with radio and optical counterparts.

=====