

V&V Reference Report

L2 ASCDS Version : 10.2.4

Observation 16515 - L2 Version 1
Chandra X-Ray Center

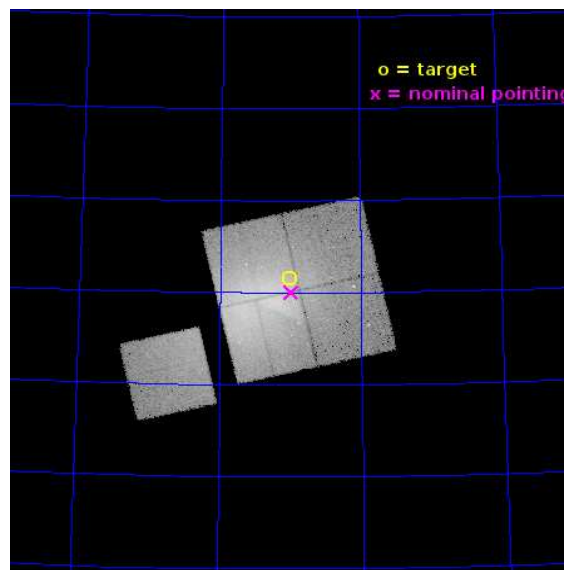
L2 Processing Date : Sep 8 2014

Contents

1	Front	2
2	OBI	3
2.1	OBI	3
2.1.1	Images	3
2.1.2	Bias	3
2.1.3	Parameters	4
2.1.4	Events	4
2.2	Compared Parameters	5
2.3	Aspect	6
2.4	Star Slots	9
2.4.1	Slot 3	9
2.4.2	Slot 4	10
2.4.3	Slot 5	11
2.4.4	Slot 6	12
2.4.5	Slot 7	13
2.5	FID Slots	14
2.5.1	Slot 0	14
2.5.2	Slot 1	15
2.5.3	Slot 2	16
A	Summary	17
A.1	Status	17
A.2	Comments	17

1 Front

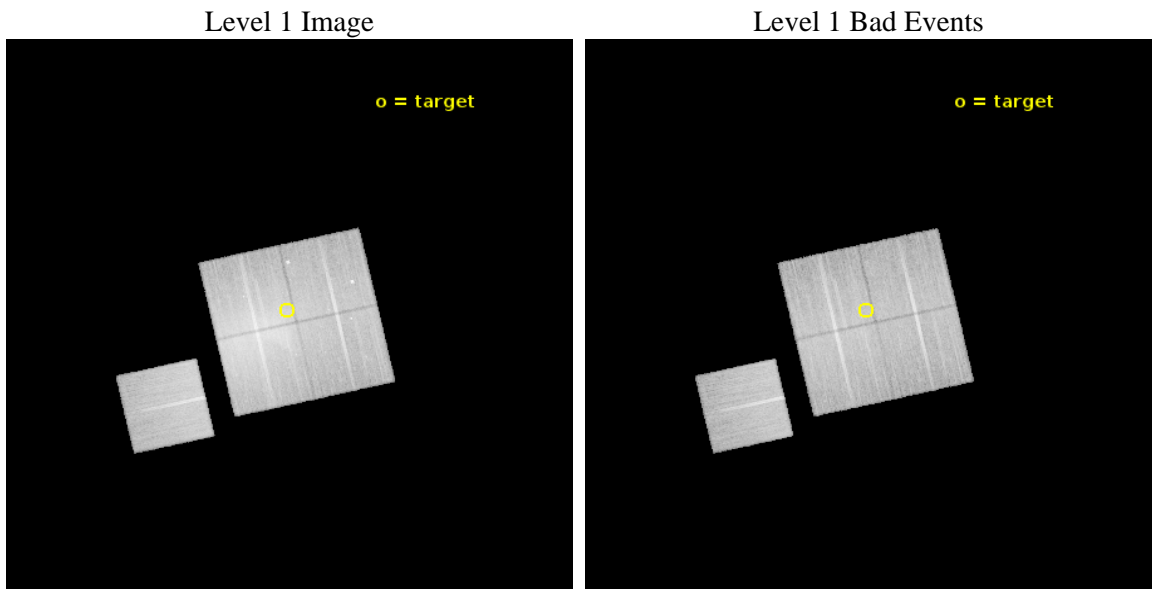
seq_num	801383	Sequence number
obs_id	16515	Observation id
title	Abell 2256: New paradigms for thermal/relativistic interactions?	P
observer	Dr. LAWRENCE RUDNICK	Principal investigator
object	Abell 2256	Source name
dtcycle	0	
cycle	P	events from which exps? Prim/Second/Both
ra_targ	255.63265	Observer's specified target RA [deg]
dec_targ	78.691753	Observer's specified target Dec [deg]
ra_nom	255.61691083342	Nominal RA [deg]
dec_nom	78.667361756871	Nominal Dec [deg]
roll_nom	257.22412265842	Nominal Roll [deg]
revision	1	Processing version of data
ontime	43756.418385923	Sum of GTIs [s]
livetime	43184.708566704	Livetime [s]
ontime0	43759.55937618	Sum of GTIs [s]
ontime1	43762.700336576	Sum of GTIs [s]
ontime2	43759.559346259	Sum of GTIs [s]
ontime3	43756.418385923	Sum of GTIs [s]
ontime6	43762.700336576	Sum of GTIs [s]
l2events	298818	Number of level 2 events



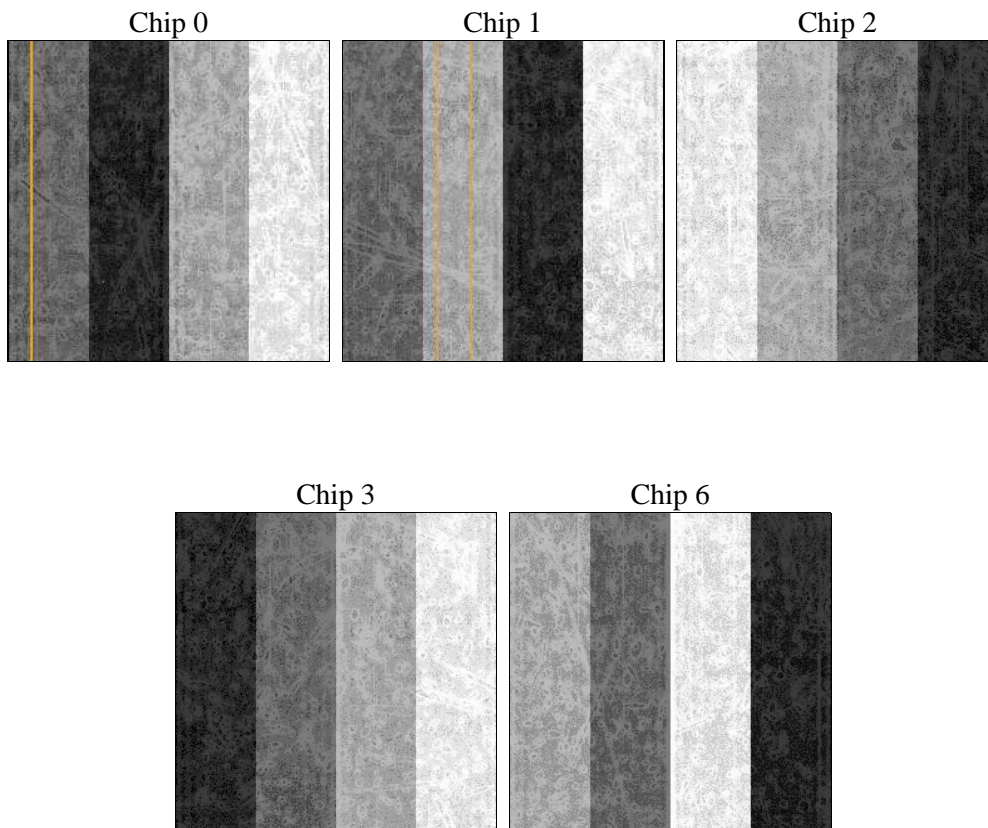
2 OBI

2.1 OBI

2.1.1 Images



2.1.2 Bias



2.1.3 Parameters

obi_num	1	Obi number	sched_exp_time	43681.000000	[s] Scheduled observation exposure time
ascdsver	10.2.4	Processing system revision	ontime	43756.418385923	Sum of GTIs [s]
caldbver	4.6.3	 	ontime0	43759.55937618	Sum of GTIs [s]
date	2014-09-08T06:57:54	Date and time of file creation	ontime1	43762.700336576	Sum of GTIs [s]
revision	1	Processing version of data	ontime2	43759.559346259	Sum of GTIs [s]
			ontime3	43756.418385923	Sum of GTIs [s]
			ontime6	43762.700336576	Sum of GTIs [s]
			l1events	1263381	Number of level 1 events

2.1.4 Events

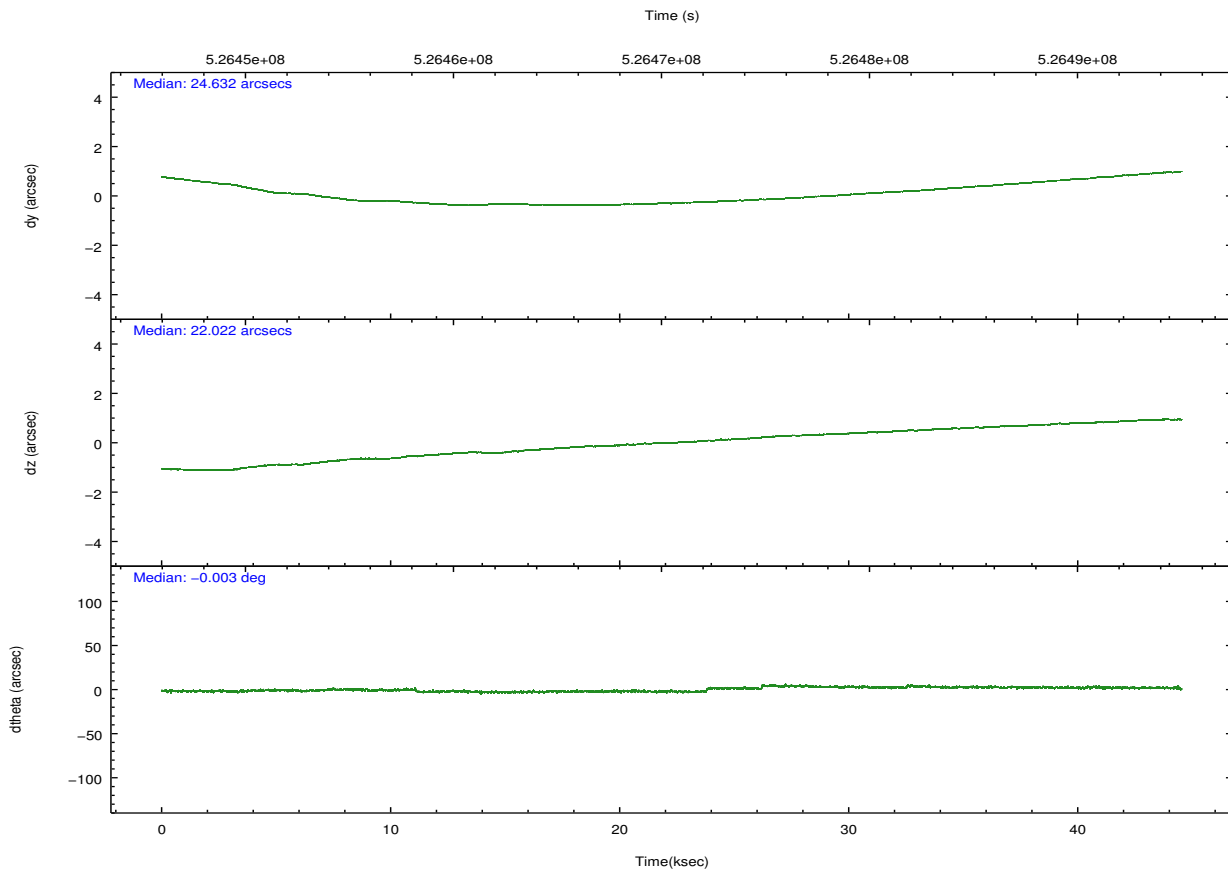
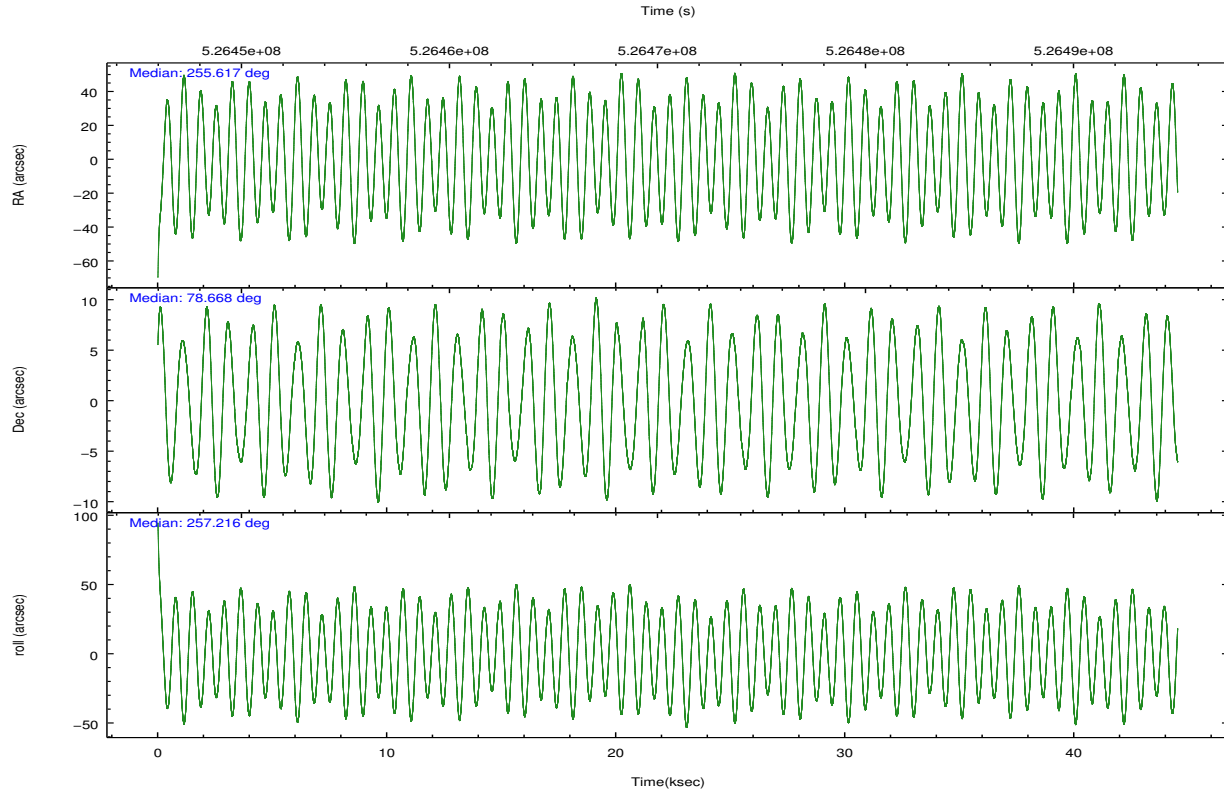
	ccd 0	ccd 1	ccd 2	ccd 3	ccd 6
level 1 events	211362	214264	320144	281036	236575
rejected events	172358	173065	197716	187340	194509
rejected %	81%	80%	61%	66%	82%

	ccd 0	ccd 1	ccd 2	ccd 3	ccd 6
grade 0 events	19921	21352	87287	65253	22447
	9%	9%	27%	23%	9%
grade 1 events	153	186	476	355	162
	0%	0%	0%	0%	0%
grade 2 events	8339	7929	16596	12495	7826
	3%	3%	5%	4%	3%
grade 3 events	2967	3006	5335	4671	3050
	1%	1%	1%	1%	1%
grade 4 events	2740	2928	5922	4669	2941
	1%	1%	1%	1%	1%
grade 5 events	8104	8518	7907	9427	8650
	3%	3%	2%	3%	3%
grade 6 events	5045	5994	7310	6619	5805
	2%	2%	2%	2%	2%
grade 7 events	164093	164351	189311	177547	185694
	77%	76%	59%	63%	78%

2.2 Compared Parameters

Parameter	Planned	Actual	Parameter	Planned	Actual
Instrument	ACIS	ACIS	Obspar format version number	7	7
Detector	ACIS-01236	ACIS-01236	Obspar file type	PREDICTED	ACTUAL
Grating	NONE	NONE	Obspar update status	NONE	UPDATED
Data mode	VFAINT	VFAINT	Number of optional ACIS chips dropped	0	0
Observation mode	POINTING	POINTING	On-chip summing requested	N	N
[deg] Pointing RA	255.574725	255.6169108334203	Subarray requested	NONE	NONE
[deg] Pointing Dec	78.693665	78.66736175687109	Alternating exposures requested	N	N
[deg] Pointing Roll	257.056795	257.2241226584197	[s] Primary exposure time	0.000000	3.1
[mm] SIM focus pos	-0.782348	-0.7809083437167272			
[mm] SIM defocus	0	0.001439871863259334			
[mm] SIM translation stage pos	-233.592463	-233.5874344608287			
[mm] SIM translation stage offset	0	-0.005018542100998502			
[s] Observation start time (MET)	526449081.184000	526447361.10759			
Observation start date	2014-09-07T03:50:14	2014-09-07T03:22:41			
[s] Observation end time (MET)	526492762.184000	526493541.97265			
Observation end date	2014-09-07T15:58:15	2014-09-07T16:12:21			
Read mode	TIMED	TIMED			

2.3 Aspect

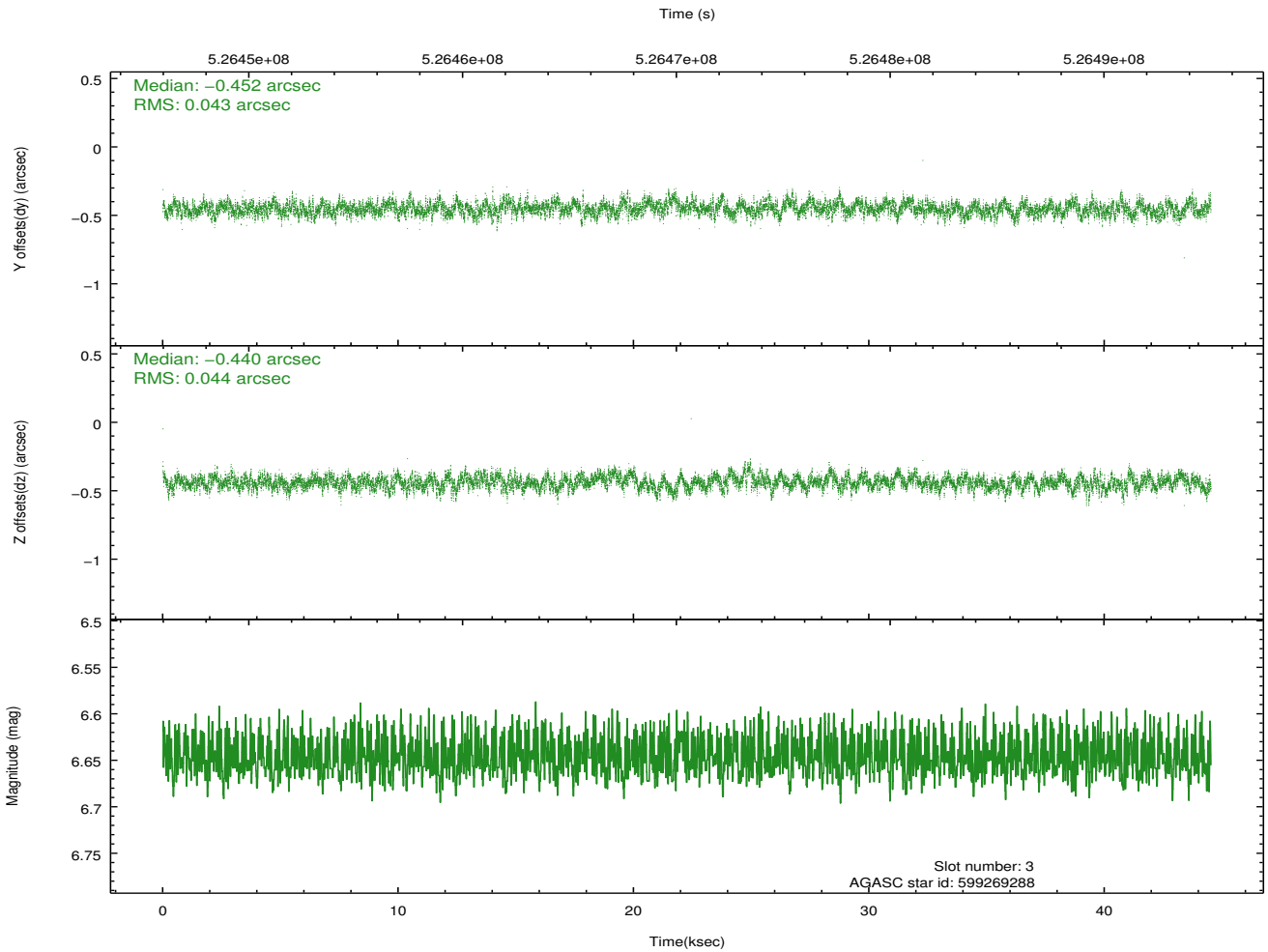
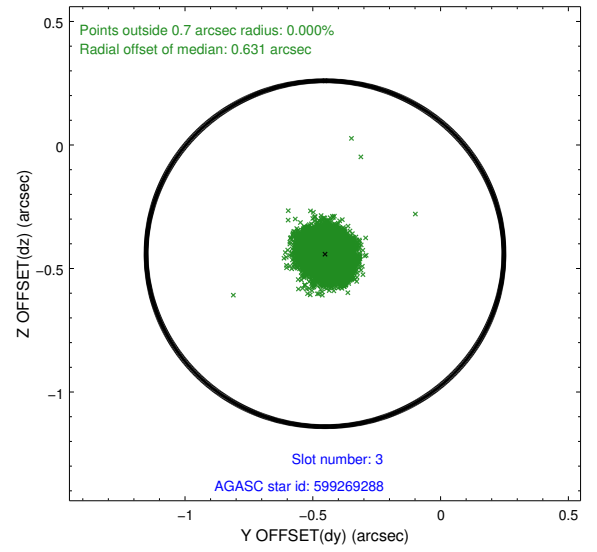
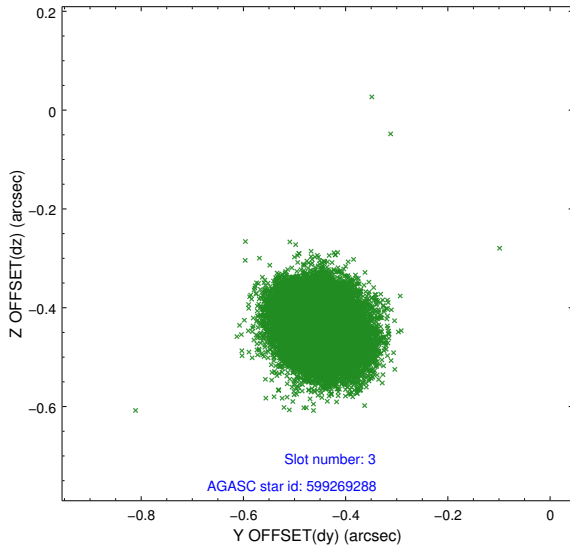


Slot Statistics

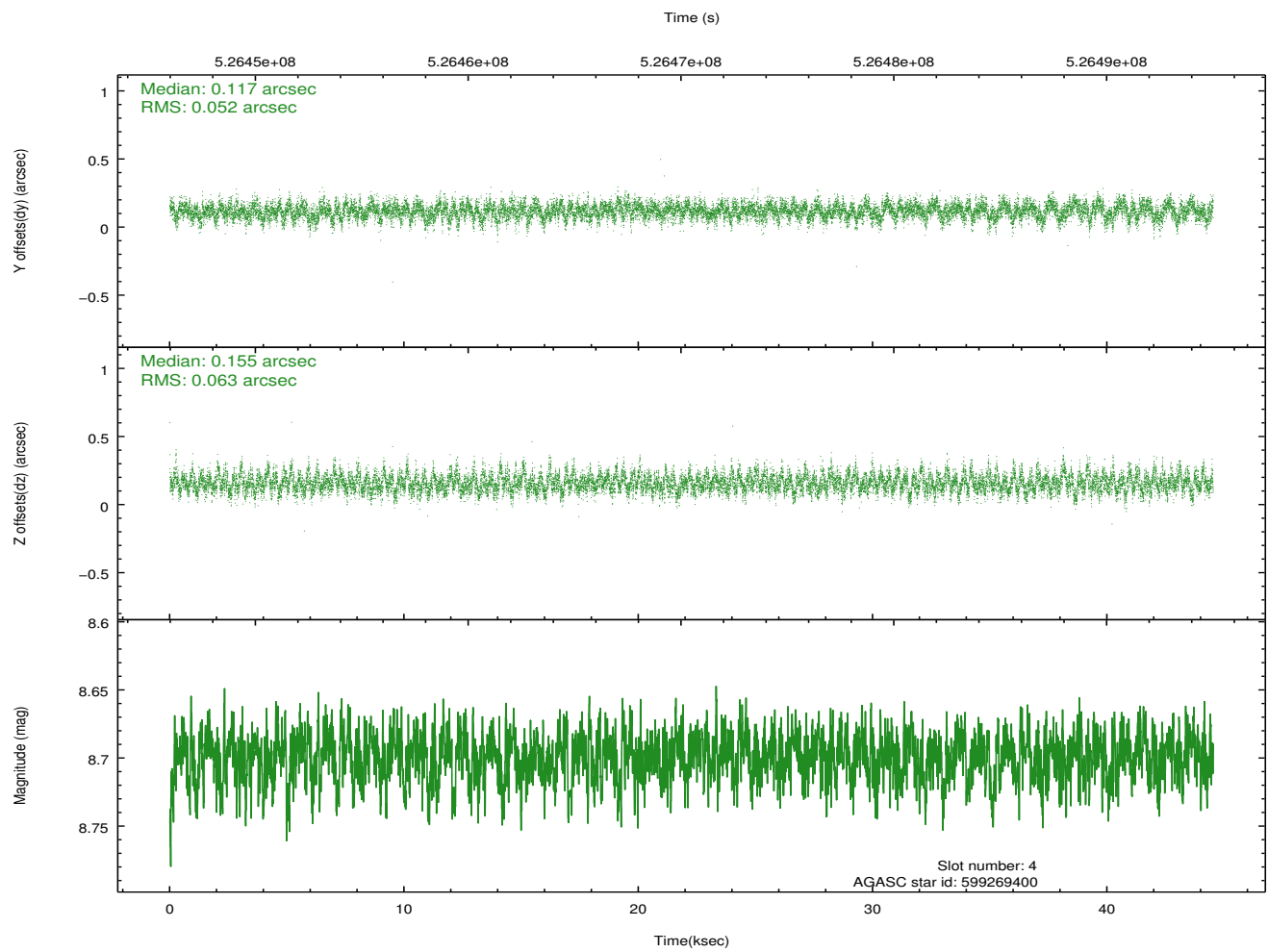
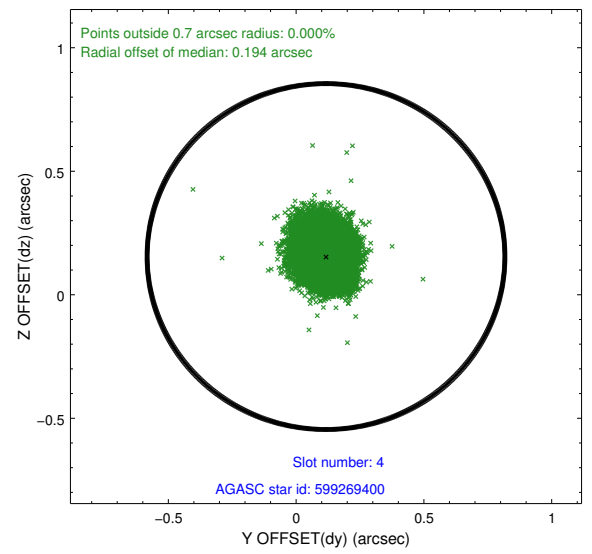
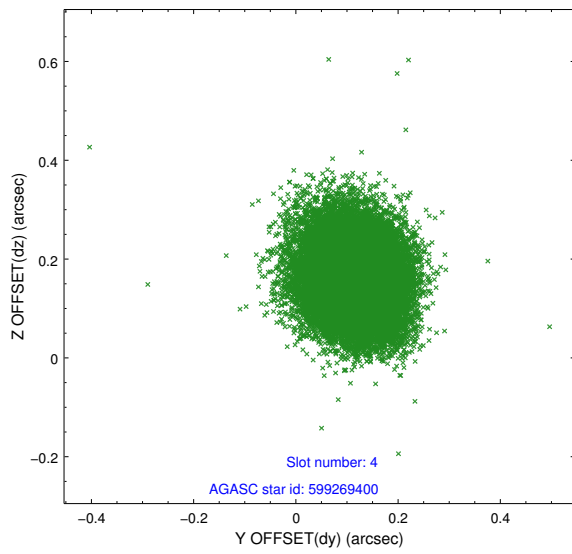
slot	status	id	mag	n_pts	med_dy	med_dz	dr1	dr2	ra	dec	mean_y	mean_z
0	FID	ACIS-I-2	6.96	10859	-0.167	-0.115	0.029	0.047	0.000000	0.000000	-779.87	-852.26
1	FID	ACIS-I-4	7.02	10858	0.344	0.123	0.016	0.023	0.000000	0.000000	2134.68	1054.19
2	FID	ACIS-I-5	7.04	10860	-0.274	0.062	0.019	0.033	0.000000	0.000000	-1833.83	1051.91
3	GUIDE	599269288	6.65	21718	-0.452	-0.440	0.065	0.106	255.018743	78.099062	2176.69	76.69
4	GUIDE	599269400	8.70	21705	0.117	0.155	0.085	0.141	254.398050	78.499006	864.70	-667.56
5	GUIDE	599789480	8.83	21710	0.186	0.155	0.102	0.168	253.845424	78.947438	-639.71	-1371.53
6	GUIDE	599790040	9.06	21700	0.197	0.325	0.106	0.173	252.479590	78.878159	-220.57	-2254.85
7	GUIDE	599790632	7.95	21713	-0.050	-0.197	0.083	0.134	257.096793	78.828804	-725.03	922.23

2.4 Star Slots

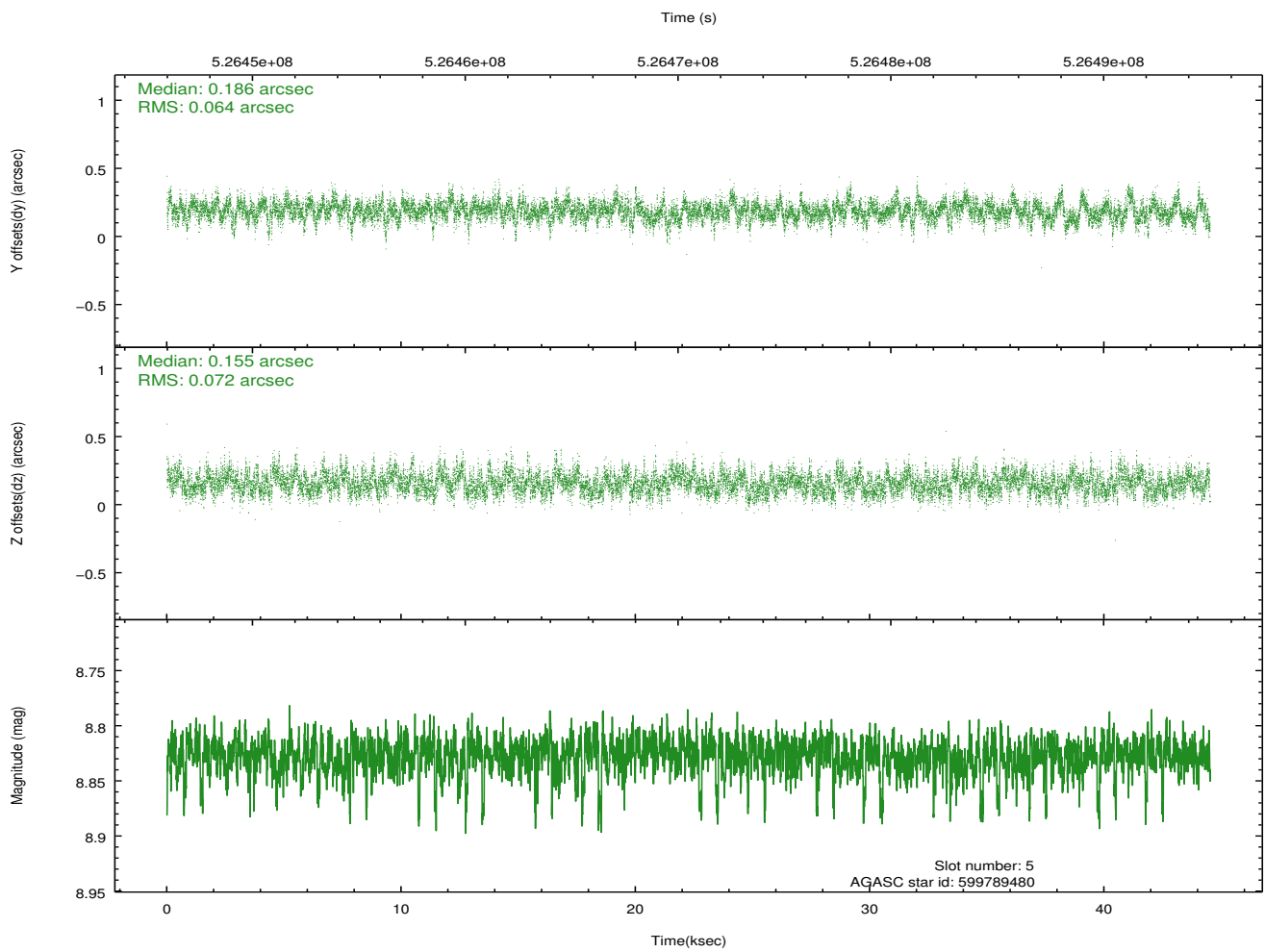
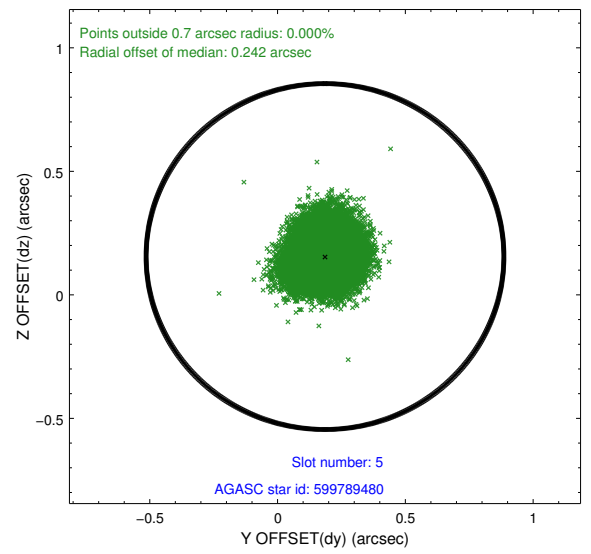
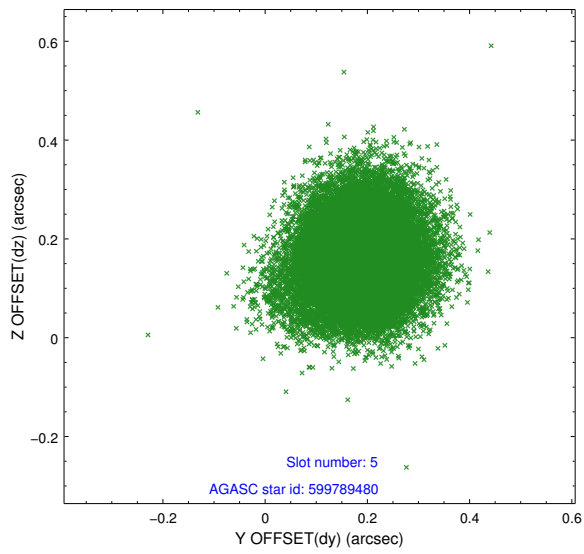
2.4.1 Slot 3



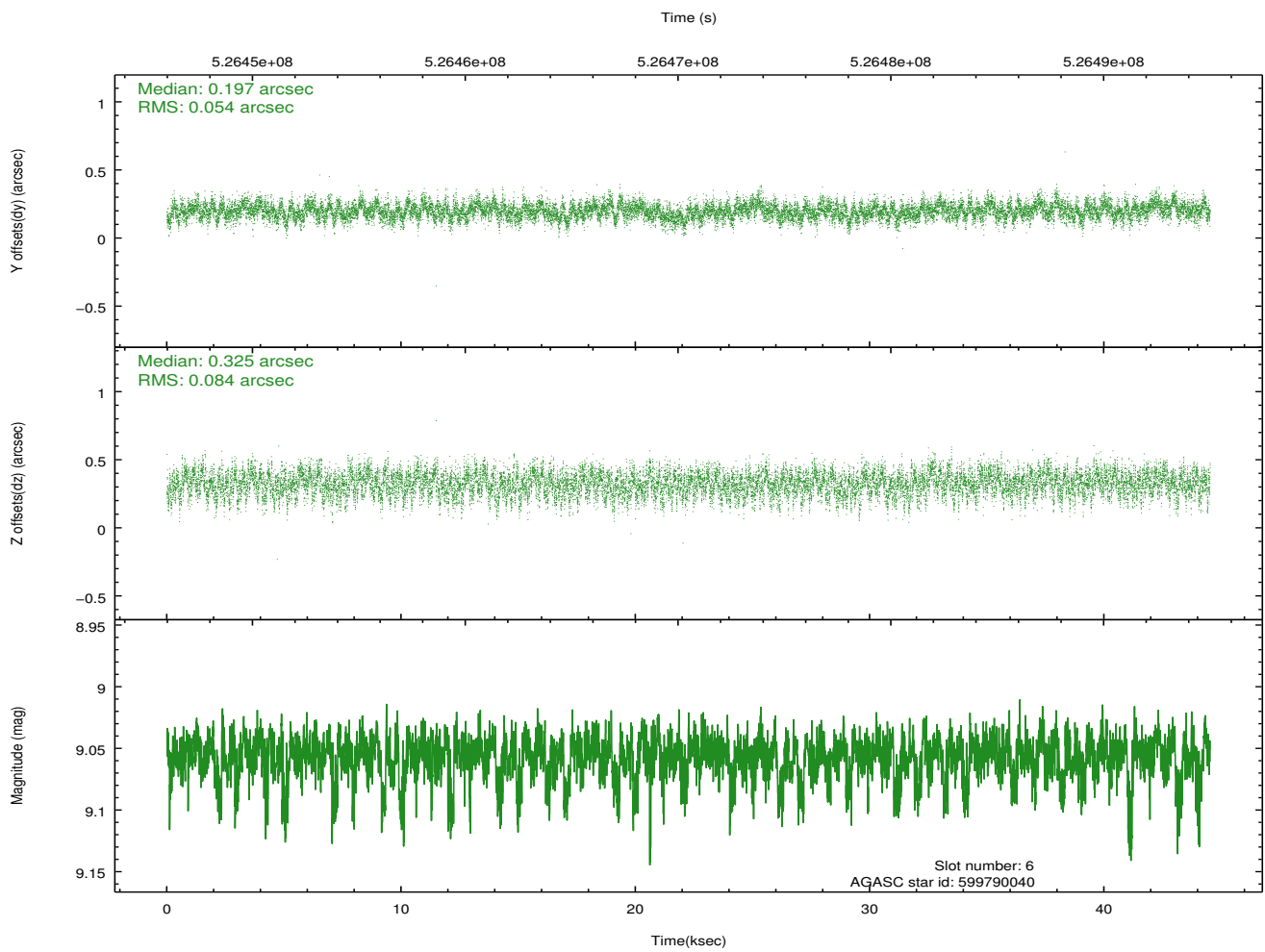
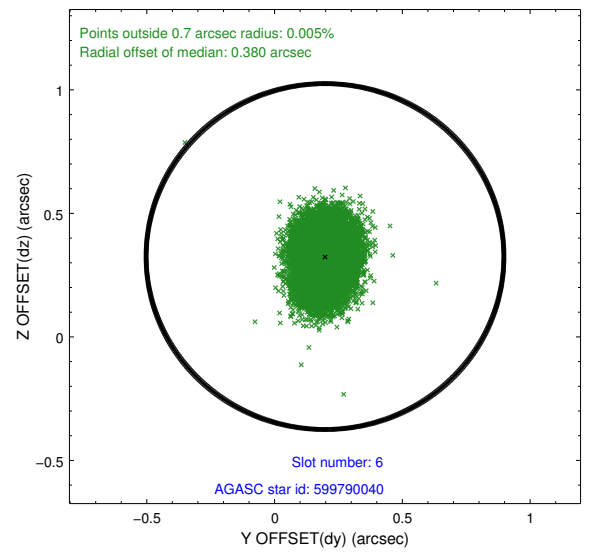
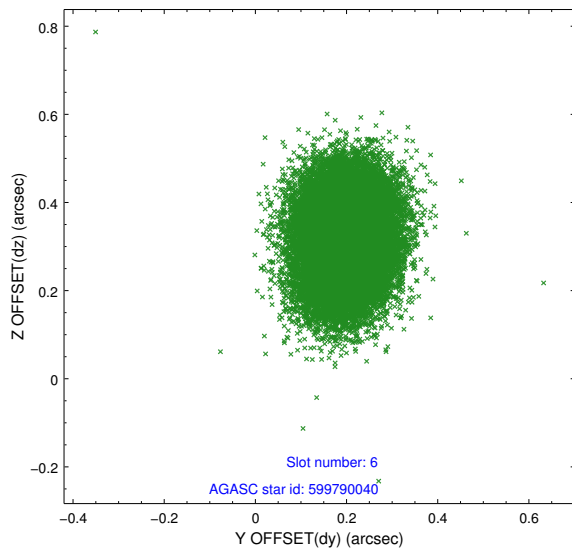
2.4.2 Slot 4



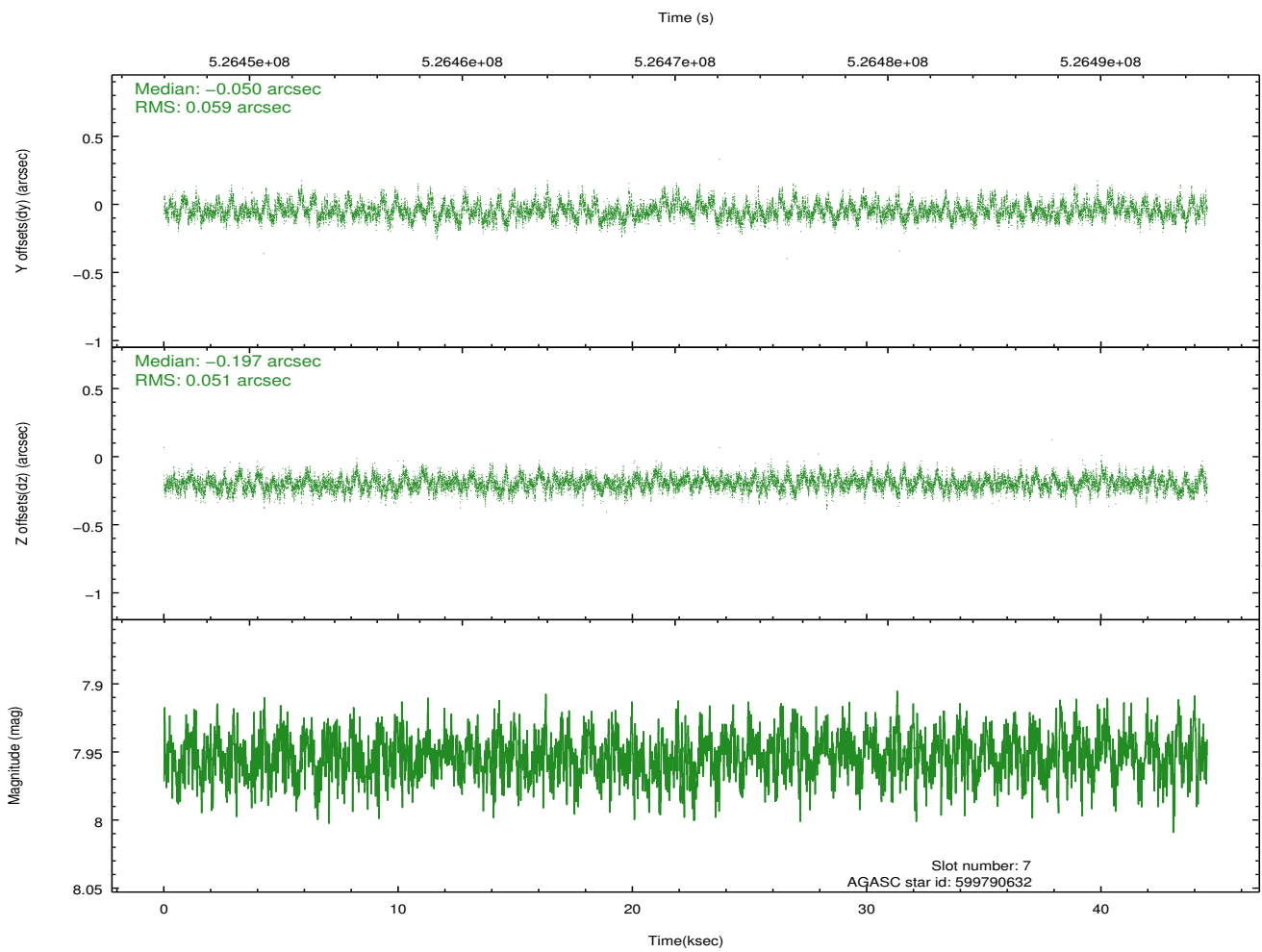
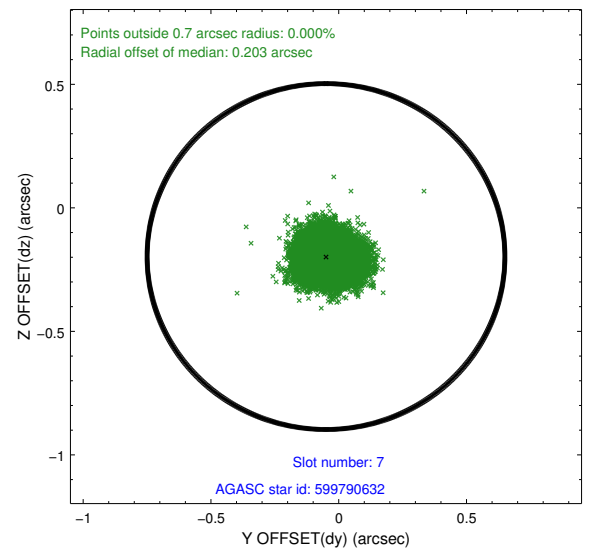
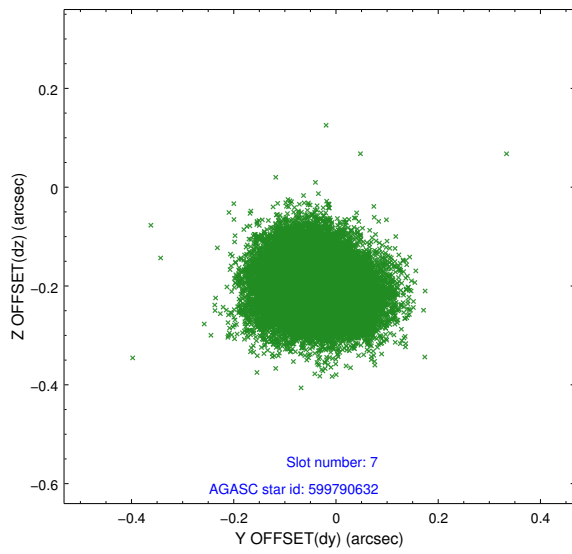
2.4.3 Slot 5



2.4.4 Slot 6

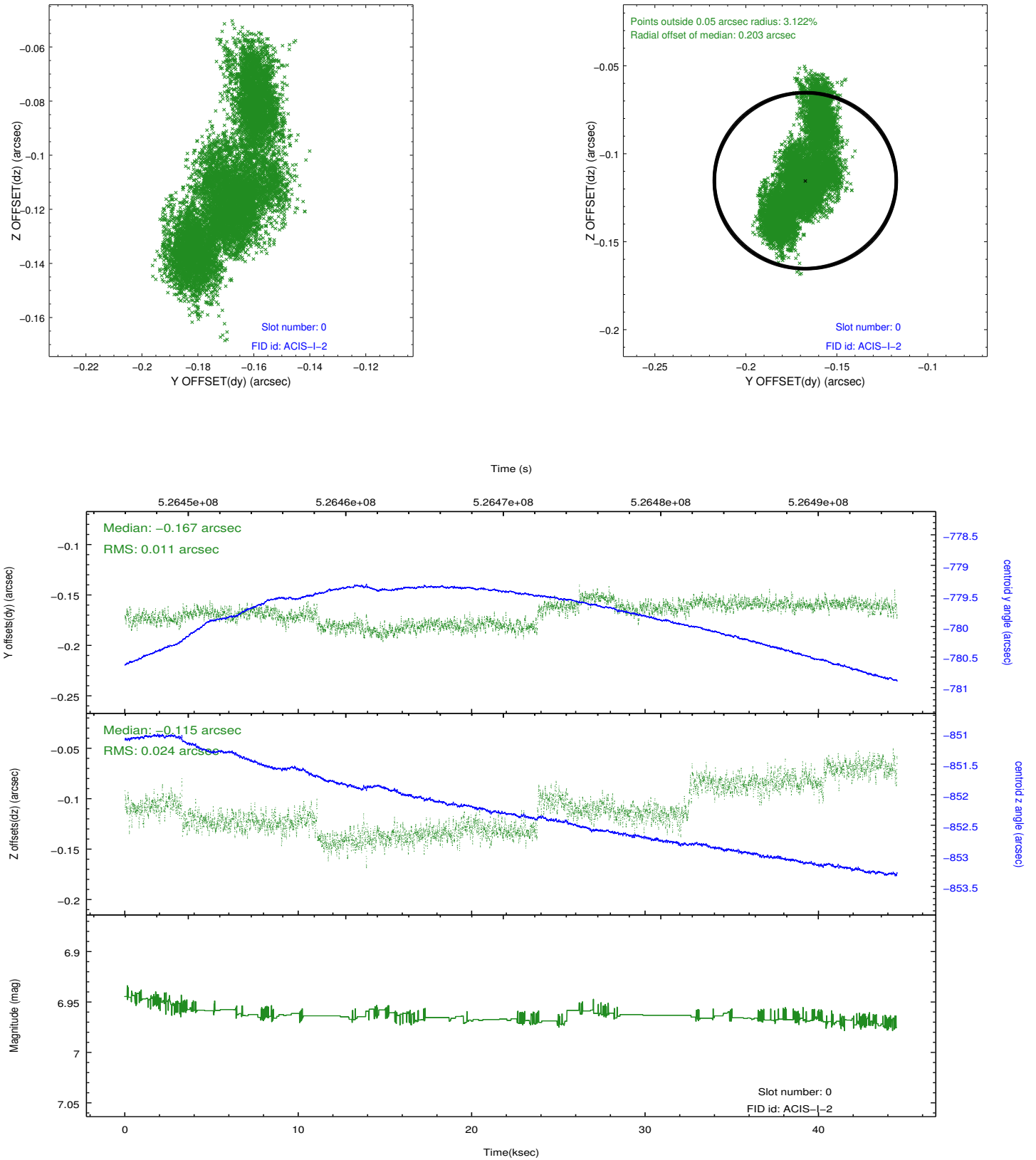


2.4.5 Slot 7

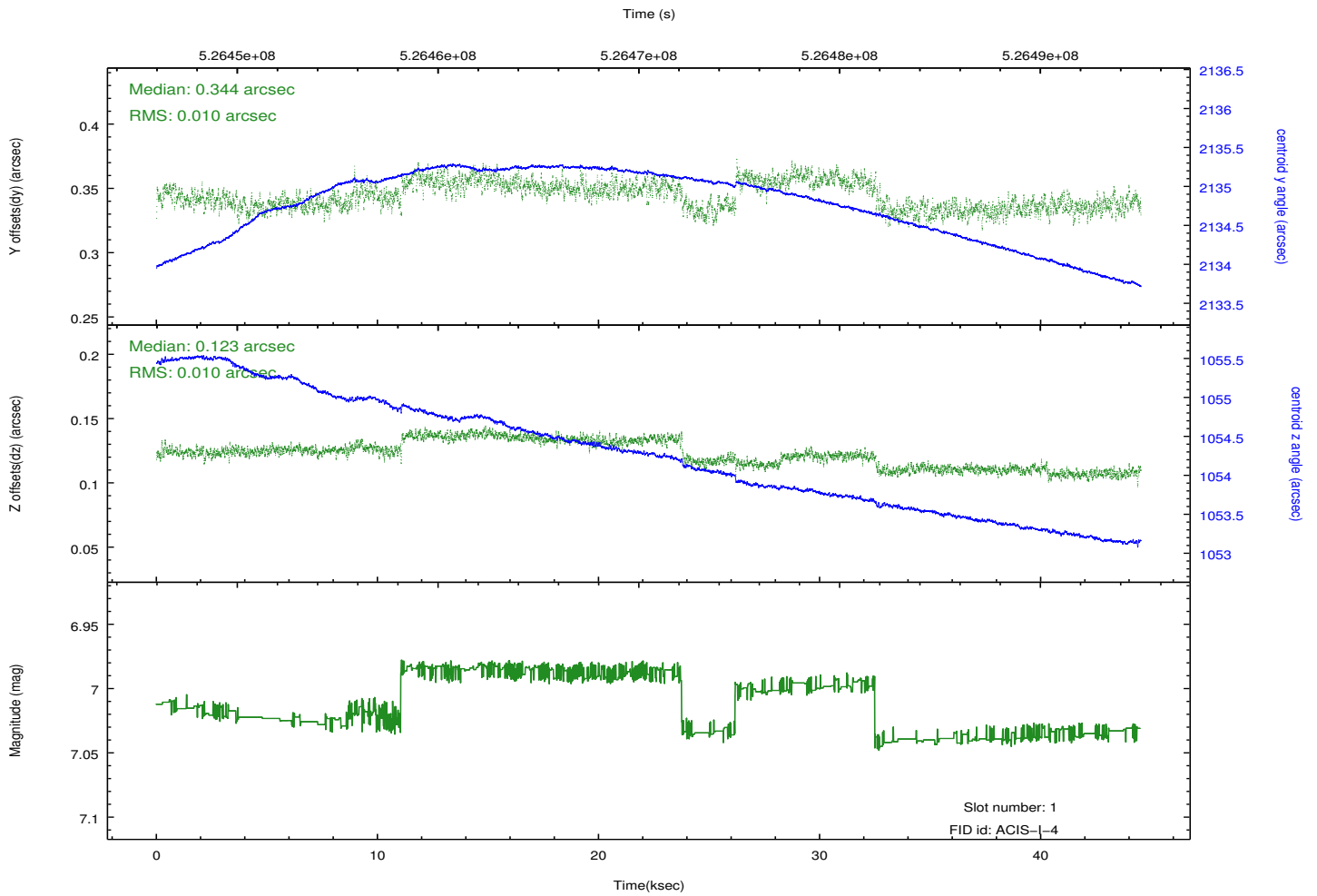
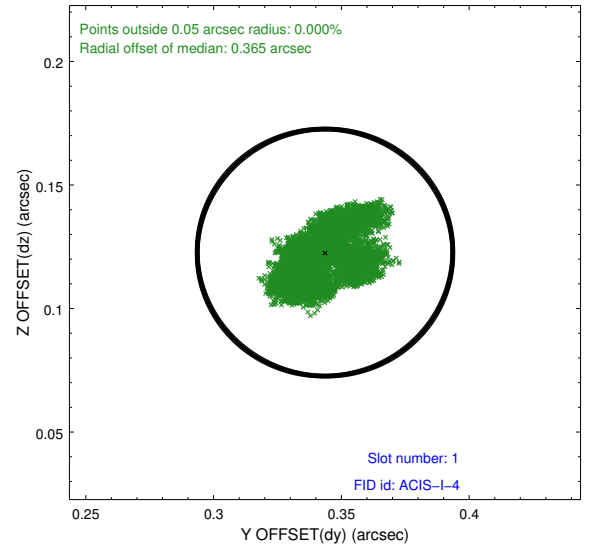
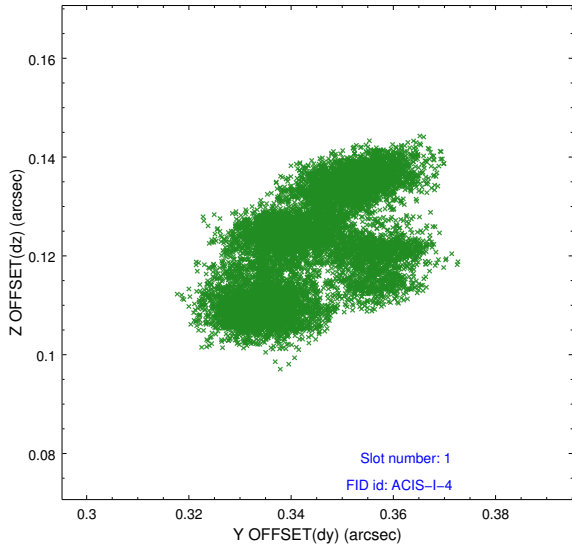


2.5 FID Slots

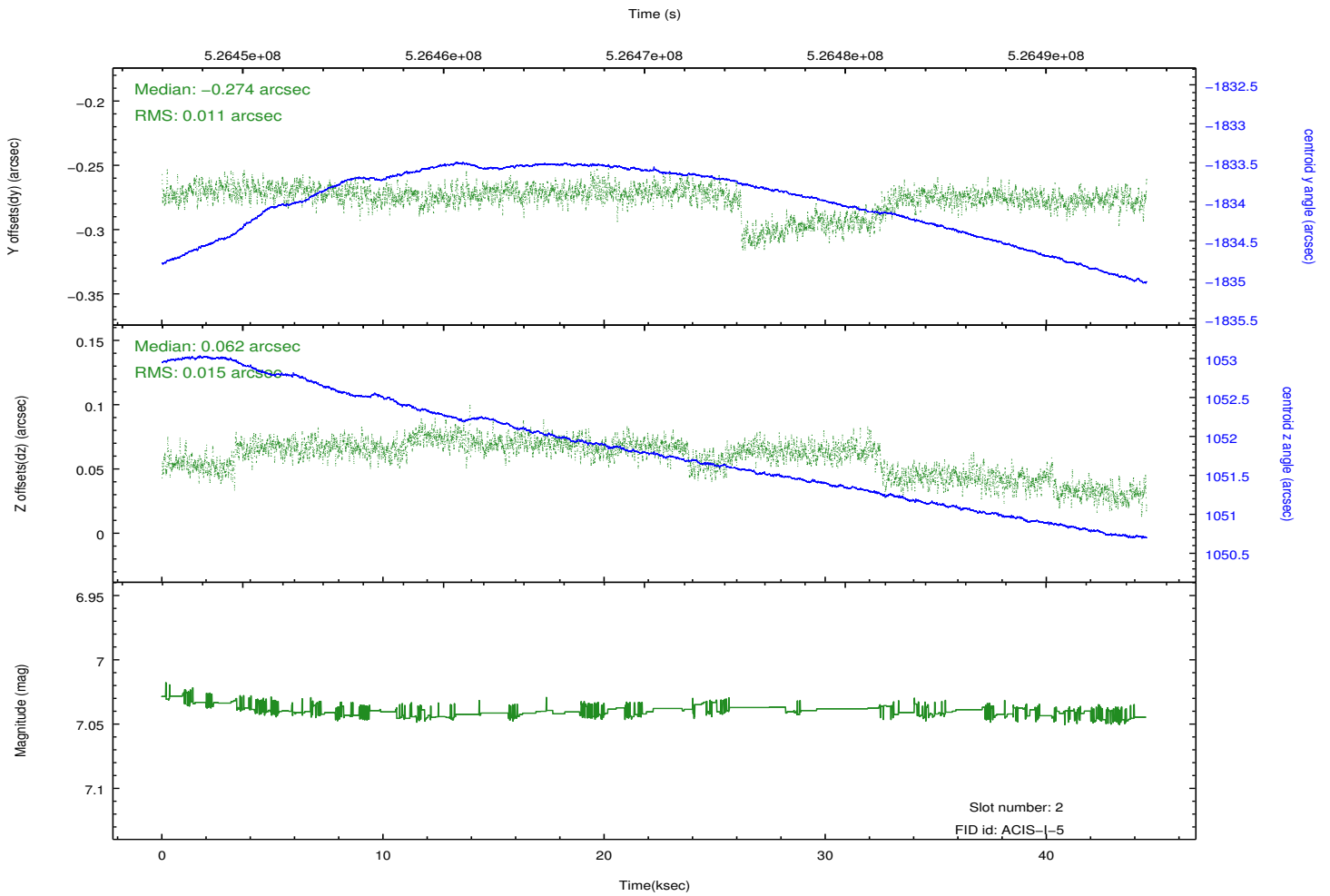
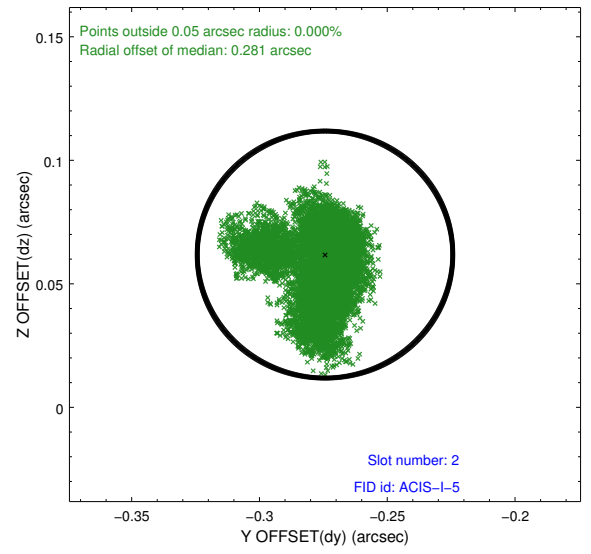
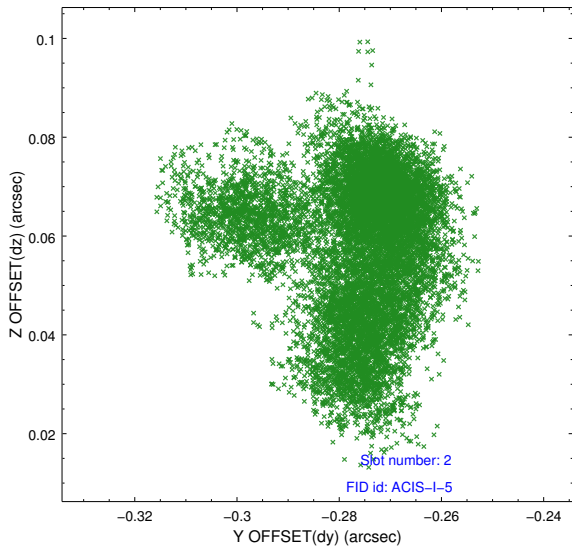
2.5.1 Slot 0



2.5.2 Slot 1



2.5.3 Slot 2



A Summary

A.1 Status

V&V Scientist	Joy Nichols
V&V Date (YYYY-MM-DD)	2014.09.08
V&V Edition	1
V&V Disposition and Status	OK
V&V Charge Time	43.756418385923

A.2 Comments