

V&V Reference Report

L2 ASCDS Version : 10.3

Observation 17545 - L2 Version 1
Chandra X-Ray Center

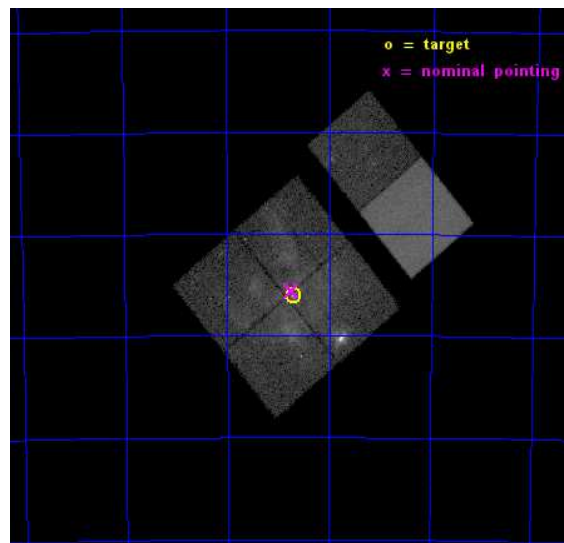
L2 Processing Date : Oct 30 2014

Contents

1	Front	2
2	OBI	3
2.1	OBI	3
2.1.1	Images	3
2.1.2	Bias	3
2.1.3	Parameters	4
2.1.4	Events	4
2.2	Compared Parameters	5
2.3	Aspect	6
2.4	Star Slots	9
2.4.1	Slot 3	9
2.4.2	Slot 4	10
2.4.3	Slot 5	11
2.4.4	Slot 6	12
2.4.5	Slot 7	13
2.5	FID Slots	14
2.5.1	Slot 0	14
2.5.2	Slot 1	15
2.5.3	Slot 2	16
A	Summary	17
A.1	Status	17
A.2	Comments	17

1 Front

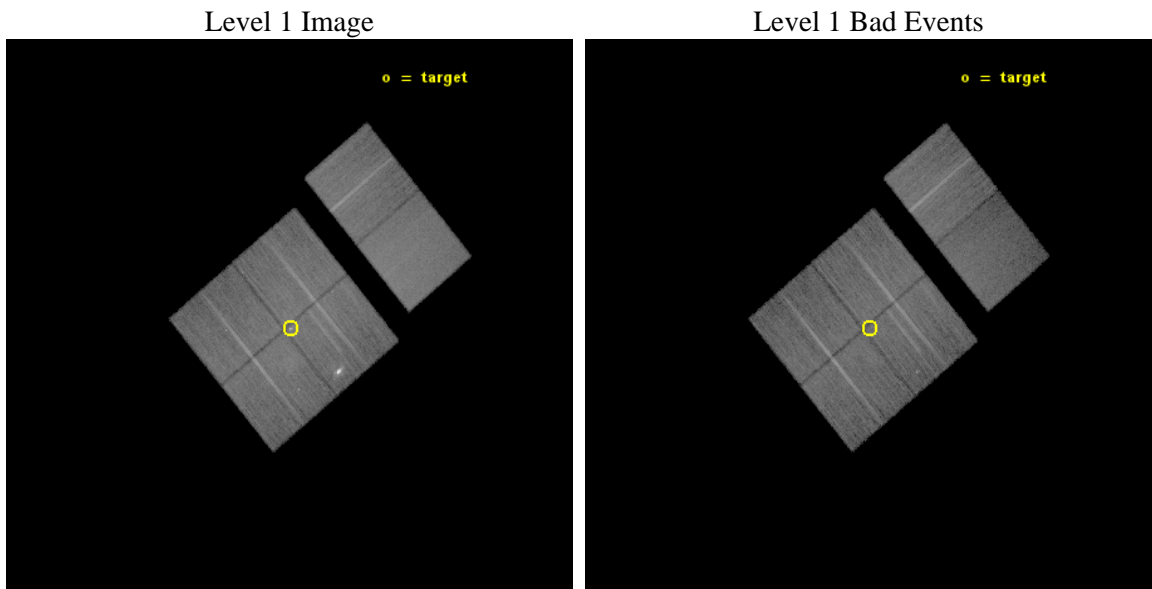
seq_num	901116	Sequence number
obs_id	17545	Observation id
title	The Tarantula -- Revealed by X-rays (T-ReX): A Definitive Chandra Investigation of 30 Doradus	Proposal title
observer	Dr. Leisa Townsley	Principal investigator
object	30 Doradus	Source name
dtcycle	0	
cycle	P	events from which exps? Prim/Second/Both
ra_targ	84.676667	Observer's specified target RA [deg]
dec_targ	-69.100806	Observer's specified target Dec [deg]
ra_nom	84.685429941634	Nominal RA [deg]
dec_nom	-69.093219948973	Nominal Dec [deg]
roll_nom	50.21688657106	Nominal Roll [deg]
revision	1	Processing version of data
ontime	34972.799869776	Sum of GTIs [s]
livetime	34529.953219733	Livetime [s]
ontime0	34969.558899403	Sum of GTIs [s]
ontime1	34972.799869776	Sum of GTIs [s]
ontime2	34972.799869776	Sum of GTIs [s]
ontime3	34972.799869776	Sum of GTIs [s]
ontime6	34972.799869776	Sum of GTIs [s]
ontime7	34972.799869776	Sum of GTIs [s]
l2events	221863	Number of level 2 events



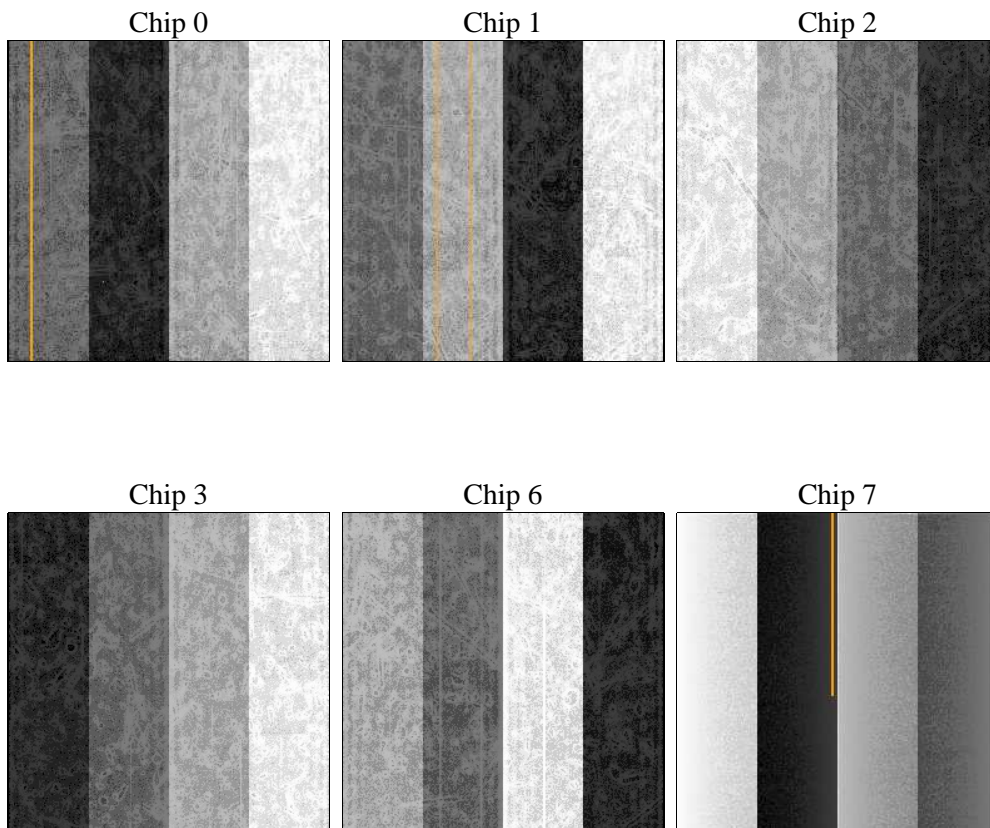
2 OBI

2.1 OBI

2.1.1 Images



2.1.2 Bias



2.1.3 Parameters

obi_num	0	Obi number	sched_exp_time	35000.000000	[s] Scheduled observation exposure time
ascdsver	10.3	Processing system revision	ontime	34972.799869776	Sum of GTIs [s]
caldsver	4.6.4	 	ontime0	34969.558899403	Sum of GTIs [s]
date	2014-10-30T03:47:31	Date and time of file creation	ontime1	34972.799869776	Sum of GTIs [s]
revision	1	Processing version of data	ontime2	34972.799869776	Sum of GTIs [s]
			ontime3	34972.799869776	Sum of GTIs [s]
			ontime6	34972.799869776	Sum of GTIs [s]
			ontime7	34972.799869776	Sum of GTIs [s]
			l1events	977143	Number of level 1 events

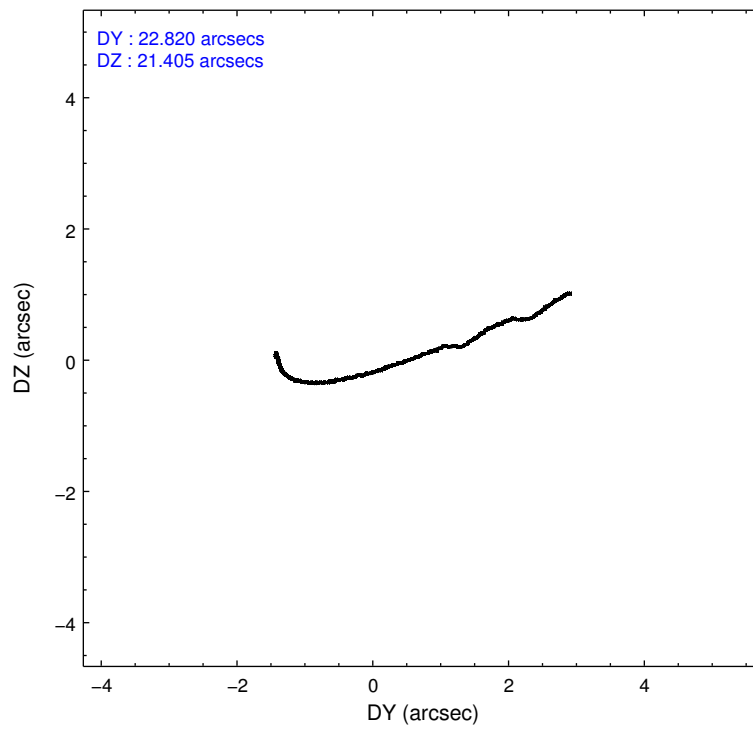
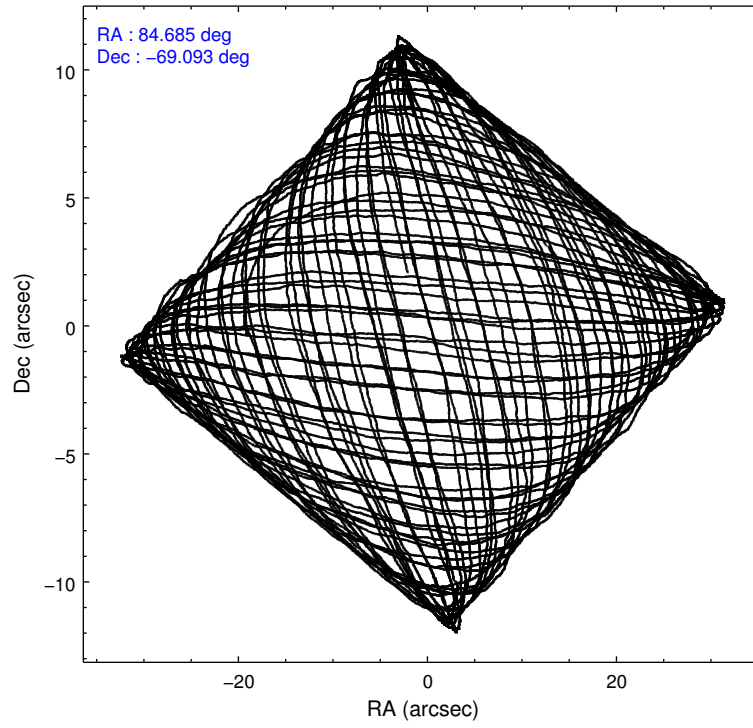
2.1.4 Events

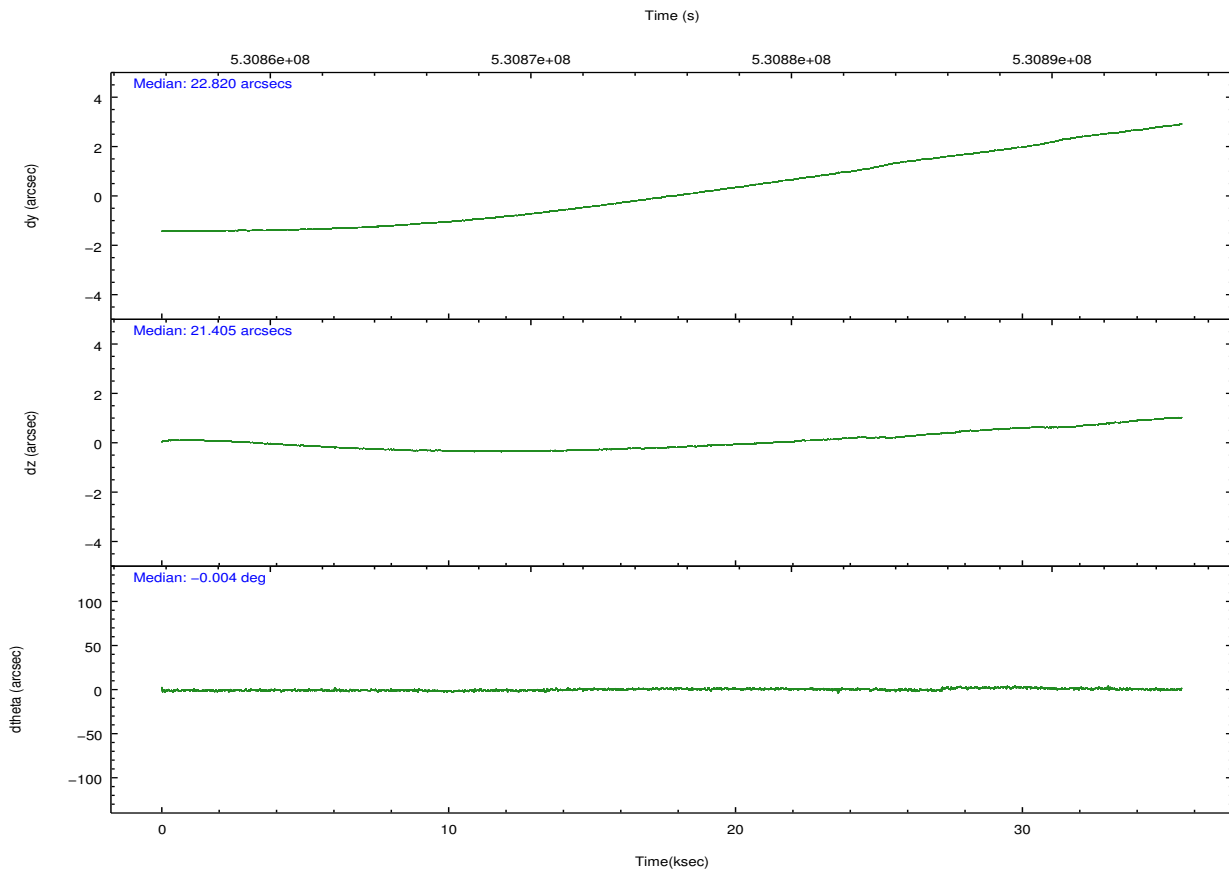
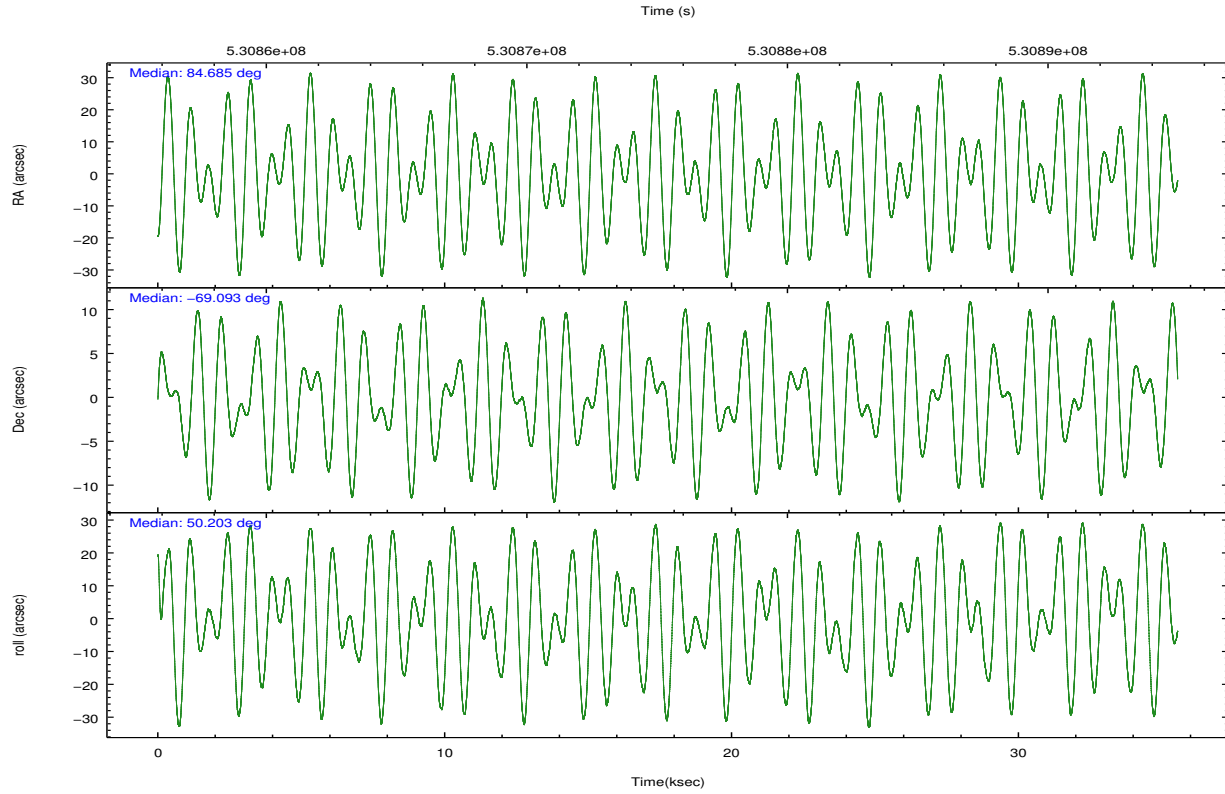
	ccd 0	ccd 1	ccd 2	ccd 3	ccd 6	ccd 7		ccd 0	ccd 1	ccd 2	ccd 3	ccd 6	ccd 7
level 1 events	141608	151344	161626	179273	158777	184515	grade 0 events	12174	15495	14935	33141	8039	9060
rejected events	116612	121810	133806	129276	138287	96031		8%	10%	9%	18%	5%	4%
rejected %	82%	80%	82%	72%	87%	52%	grade 1 events	101	93	125	256	96	272
								0%	0%	0%	0%	0%	0%
							grade 2 events	5189	5371	5296	7085	4370	19149
								3%	3%	3%	3%	2%	10%
							grade 3 events	2062	2102	2055	2784	1898	7799
								1%	1%	1%	1%	1%	4%
							grade 4 events	1856	2210	2082	2800	1981	7683
								1%	1%	1%	1%	1%	4%
							grade 5 events	6442	6641	6167	7129	7305	19519
								4%	4%	3%	3%	4%	10%
							grade 6 events	3718	4357	3455	4190	4204	44801
								2%	2%	2%	2%	2%	24%
							grade 7 events	110066	115075	127511	121888	130884	76232
								77%	76%	78%	67%	82%	41%

2.2 Compared Parameters

Parameter	Planned	Actual	Parameter	Planned	Actual
Instrument	ACIS	ACIS	Obspar format version number	7	7
Detector	ACIS-012367	ACIS-012367	Obspar file type	PREDICTED	ACTUAL
Grating	NONE	NONE	Obspar update status	NONE	UPDATED
Data mode	VFAINT	VFAINT	CCD I0 on	Y	Y
Observation mode	POINTING	POINTING	CCD I1 on	Y	Y
[deg] Pointing RA	84.672527	84.68542994163406	CCD I2 on	Y	Y
[deg] Pointing Dec	-69.120445	-69.09321994897272	CCD I3 on	Y	Y
[deg] Pointing Roll	49.996131	50.21688657105987	CCD S0 on	N	N
[mm] SIM focus pos	-0.782348	-0.7809083437167272	CCD S1 on	N	N
[mm] SIM defocus	0	0.001439871863259334	CCD S2 on	O1	Y
[mm] SIM translation stage pos	-233.592463	-233.5874344608287	CCD S3 on	O2	Y
[mm] SIM translation stage offset	0	-0.005018542100998502	CCD S4 on	N	N
[s] Observation start time (MET)	530858184.184000	530856897.00255	CCD S5 on	N	N
Observation start date	2014-10-28T04:35:17	2014-10-28T04:14:57	Number of optional ACIS chips dropped	0	0
[s] Observation end time (MET)	530893184.184000	530893832.36711	On-chip summing requested	N	N
Observation end date	2014-10-28T14:18:37	2014-10-28T14:30:32	Subarray requested	NONE	NONE
Read mode	TIMED	TIMED	Alternating exposures requested	N	N
			[s] Primary exposure time	0.000000	3.2

2.3 Aspect





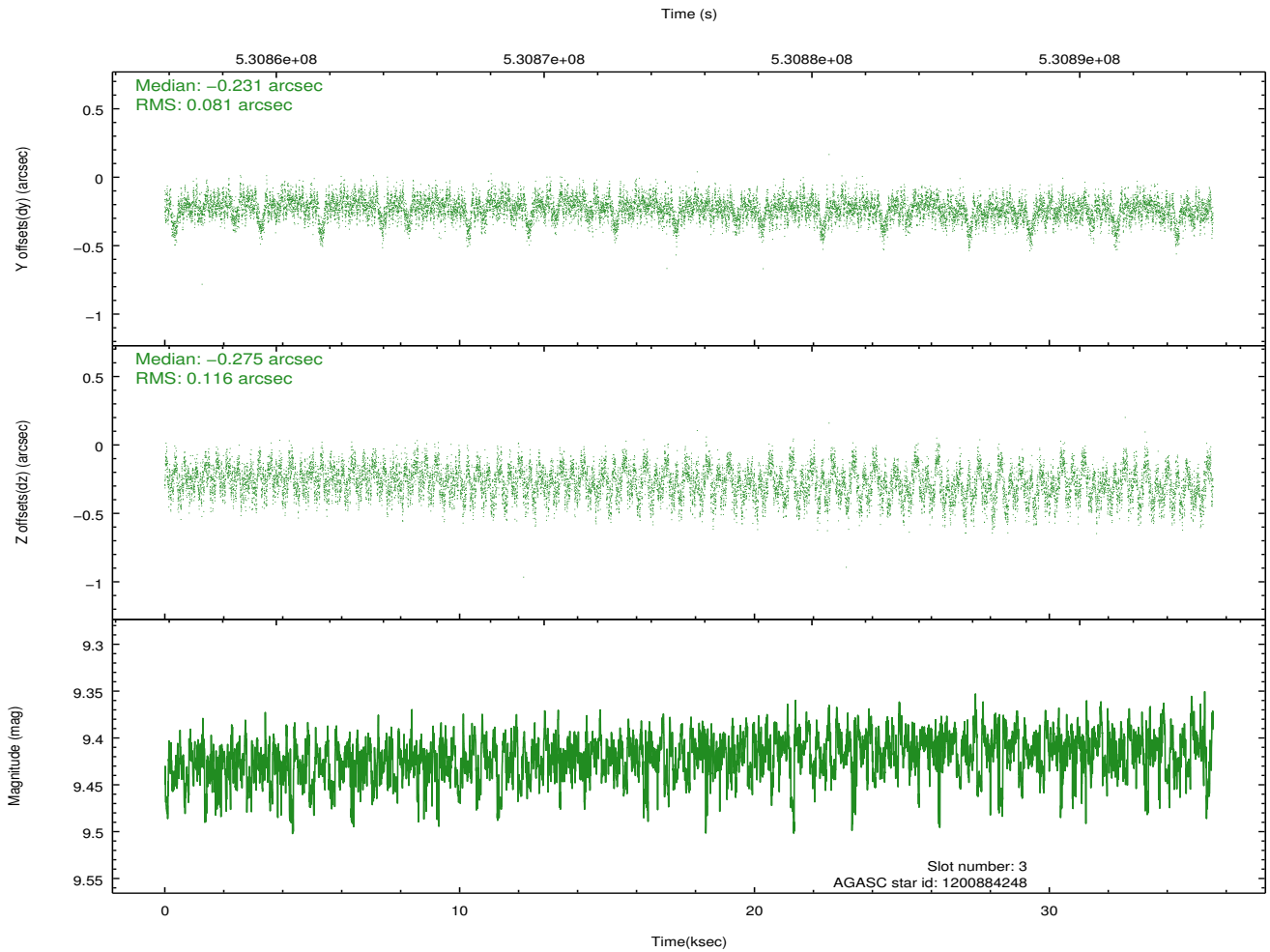
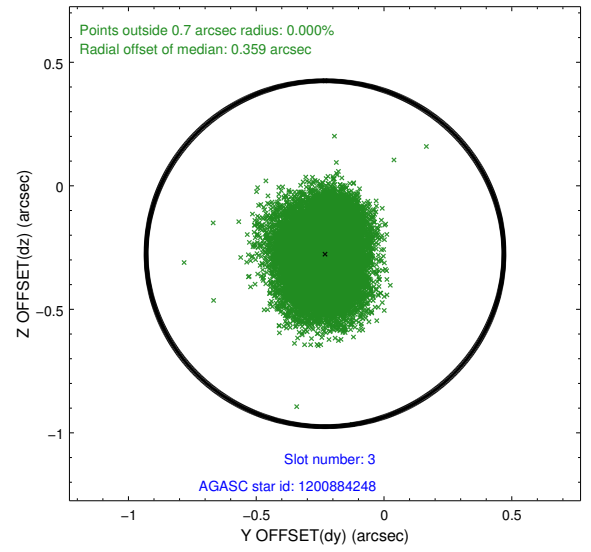
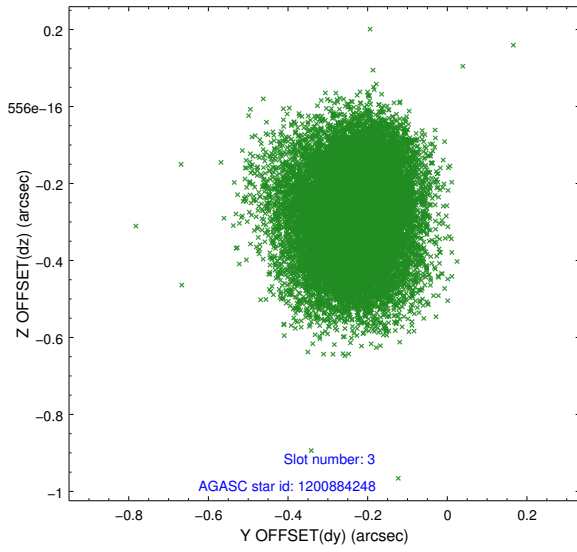
Slot Statistics

slot	status	used	id	mag	n_pts	med_dy	med_dz	dr1	dr2	ra	dec	mean_y	mean_z
0	FID		ACIS-I-2	6.99	8669	-0.136	-0.083	0.039	0.052	0.000000	0.000000	-778.10	-851.73
1	FID		ACIS-I-4	7.01	8671	0.303	0.102	0.048	0.070	0.000000	0.000000	2136.31	1054.69
2	FID		ACIS-I-5	7.06	8671	-0.253	0.061	0.023	0.036	0.000000	0.000000	-1832.06	1052.43
3	GUIDE	used	1200884248	9.42	17326	-0.231	-0.275	0.151	0.243	83.880915	-68.565170	856.55	2078.33
4	GUIDE	used	1200885760	9.42	17321	-0.142	-0.210	0.176	0.283	83.723637	-68.777667	142.62	1734.05
5	GUIDE	used	1201020040	8.57	17336	-0.031	0.140	0.101	0.164	85.379163	-68.879396	1250.09	-147.10
6	GUIDE	used	1201540776	9.53	17329	0.425	0.572	0.222	0.334	85.107945	-69.858480	-1688.58	-2122.53
7	GUIDE	used	1201018384	9.05	17333	-0.018	-0.226	0.130	0.205	85.801362	-68.593260	2397.31	75.03

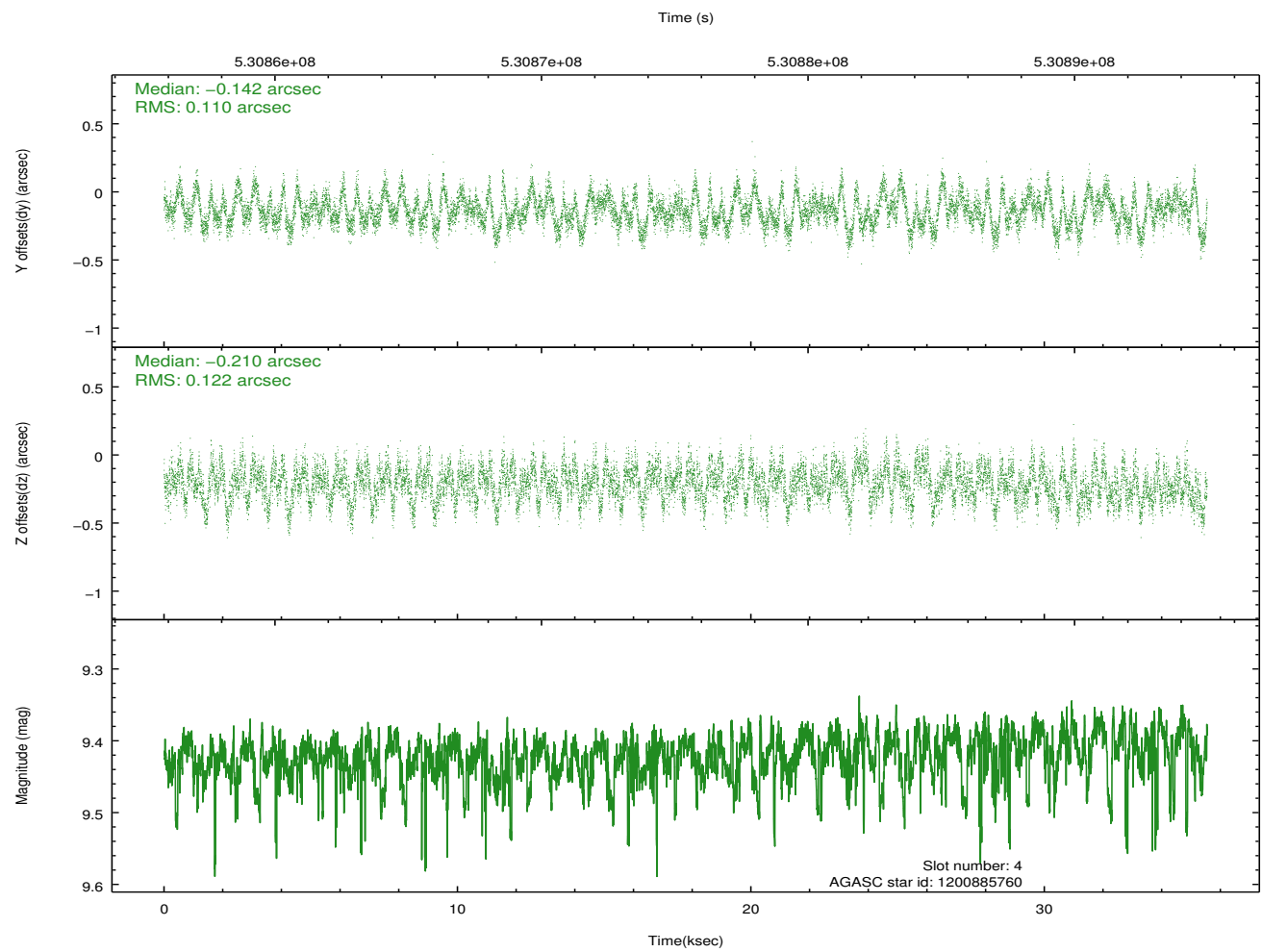
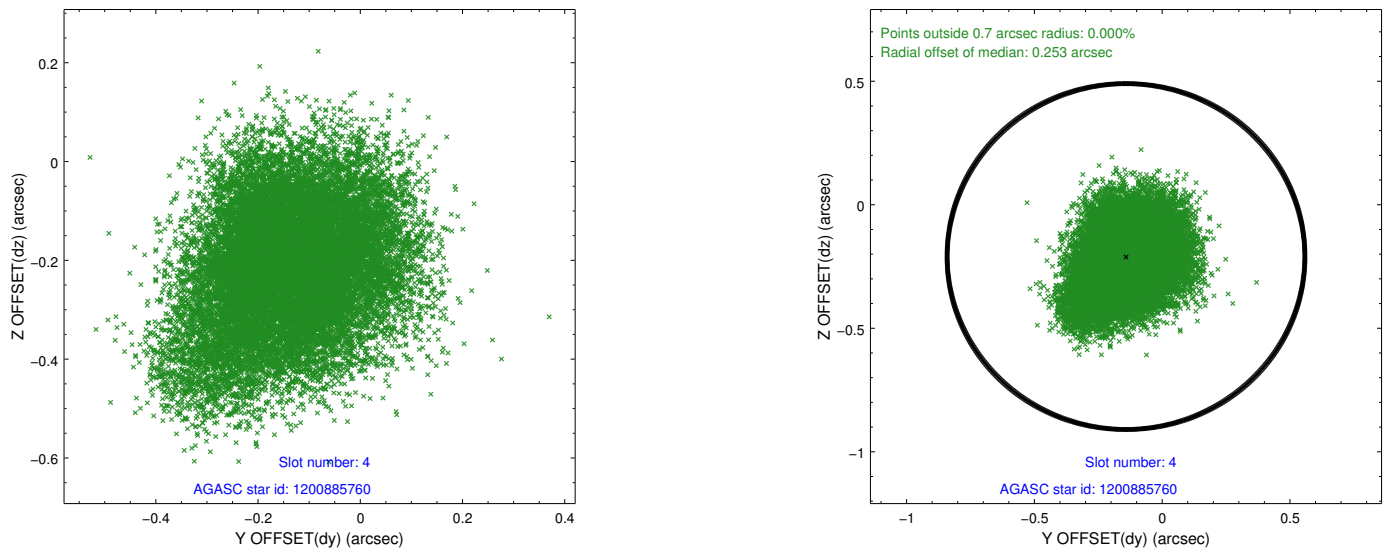
∞

2.4 Star Slots

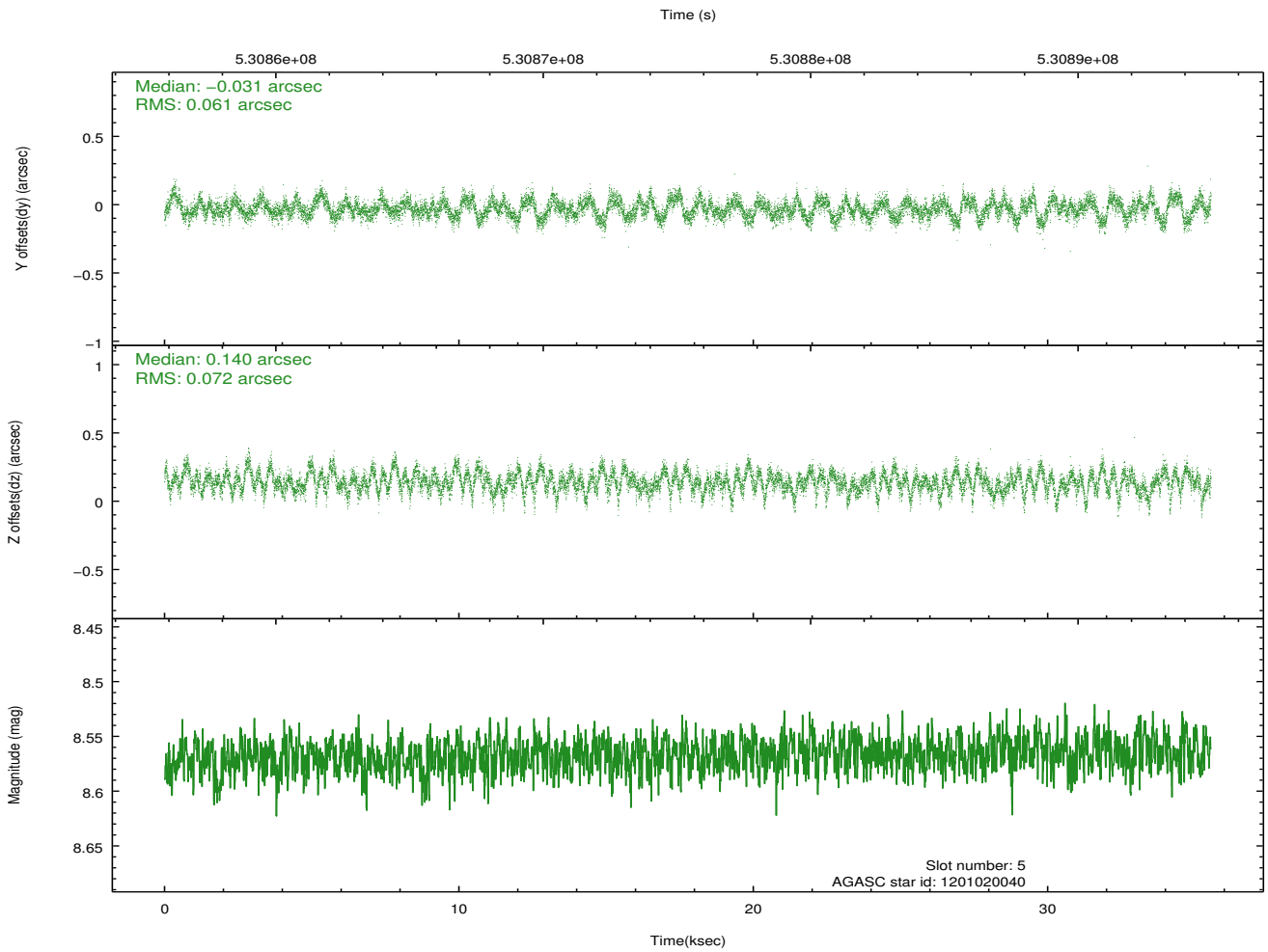
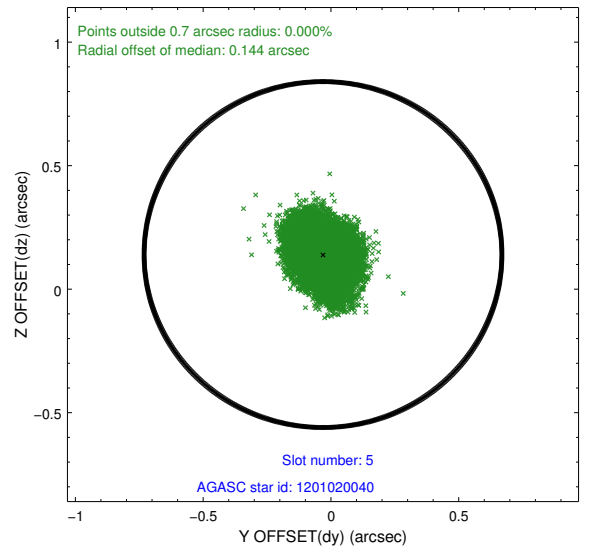
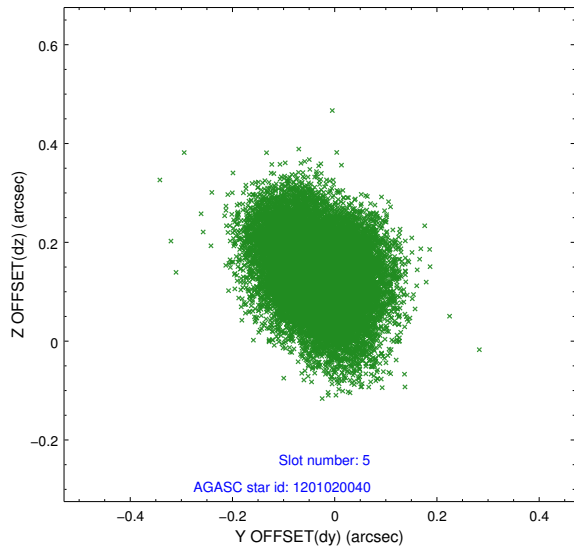
2.4.1 Slot 3



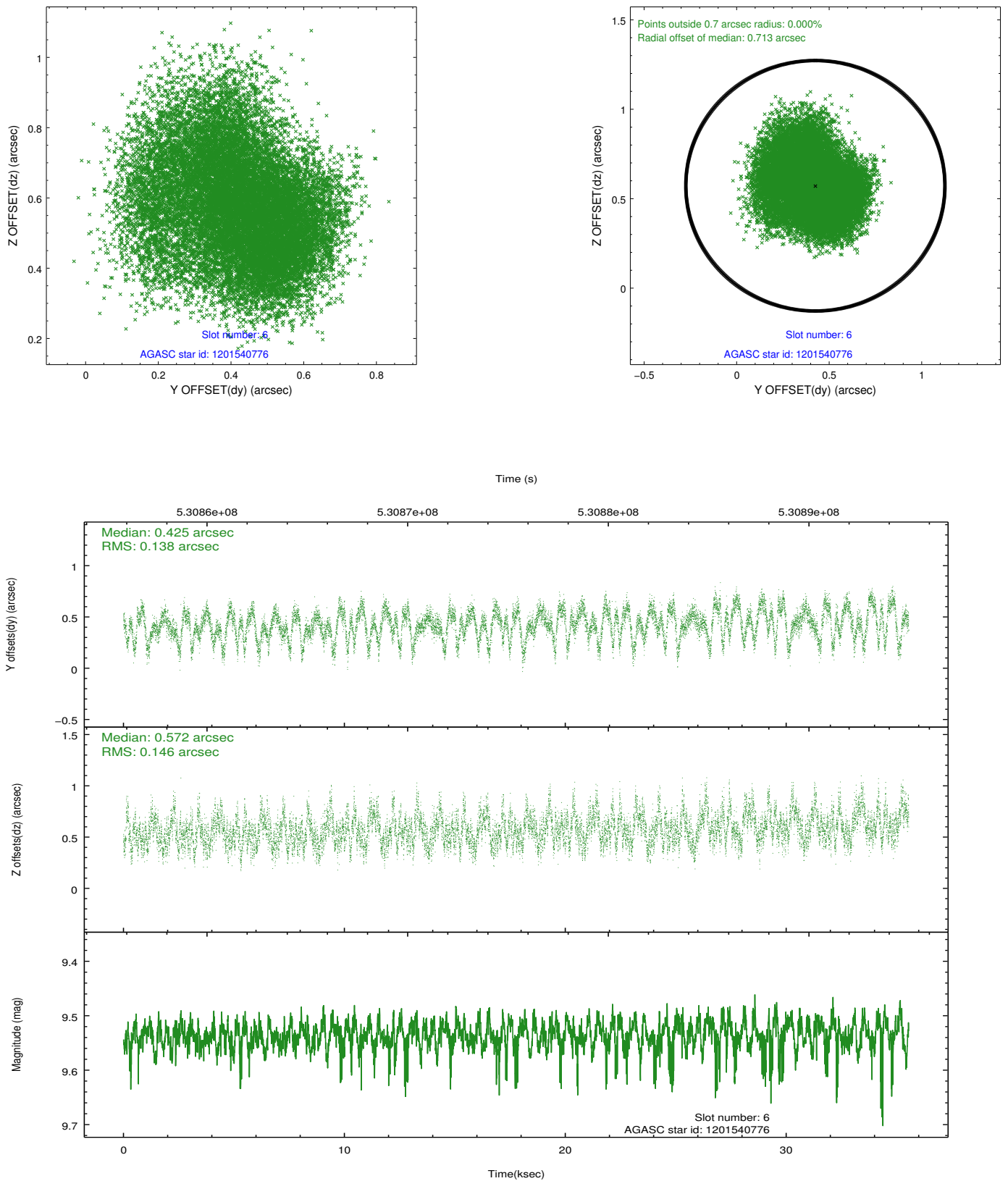
2.4.2 Slot 4



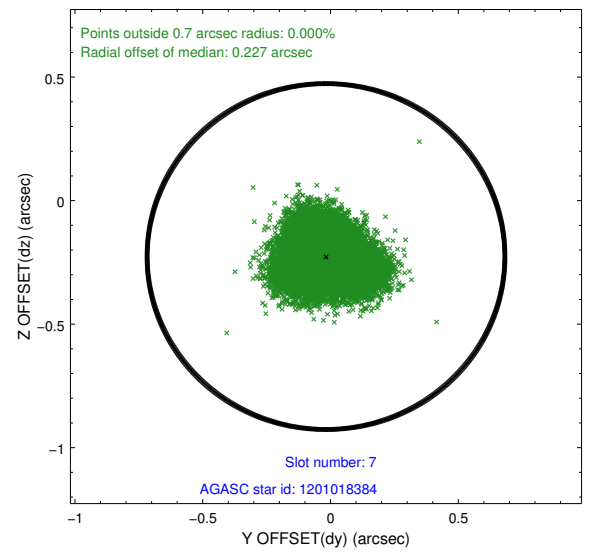
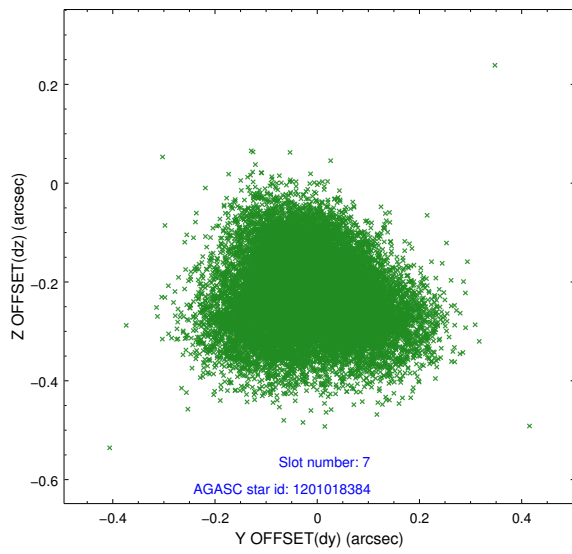
2.4.3 Slot 5



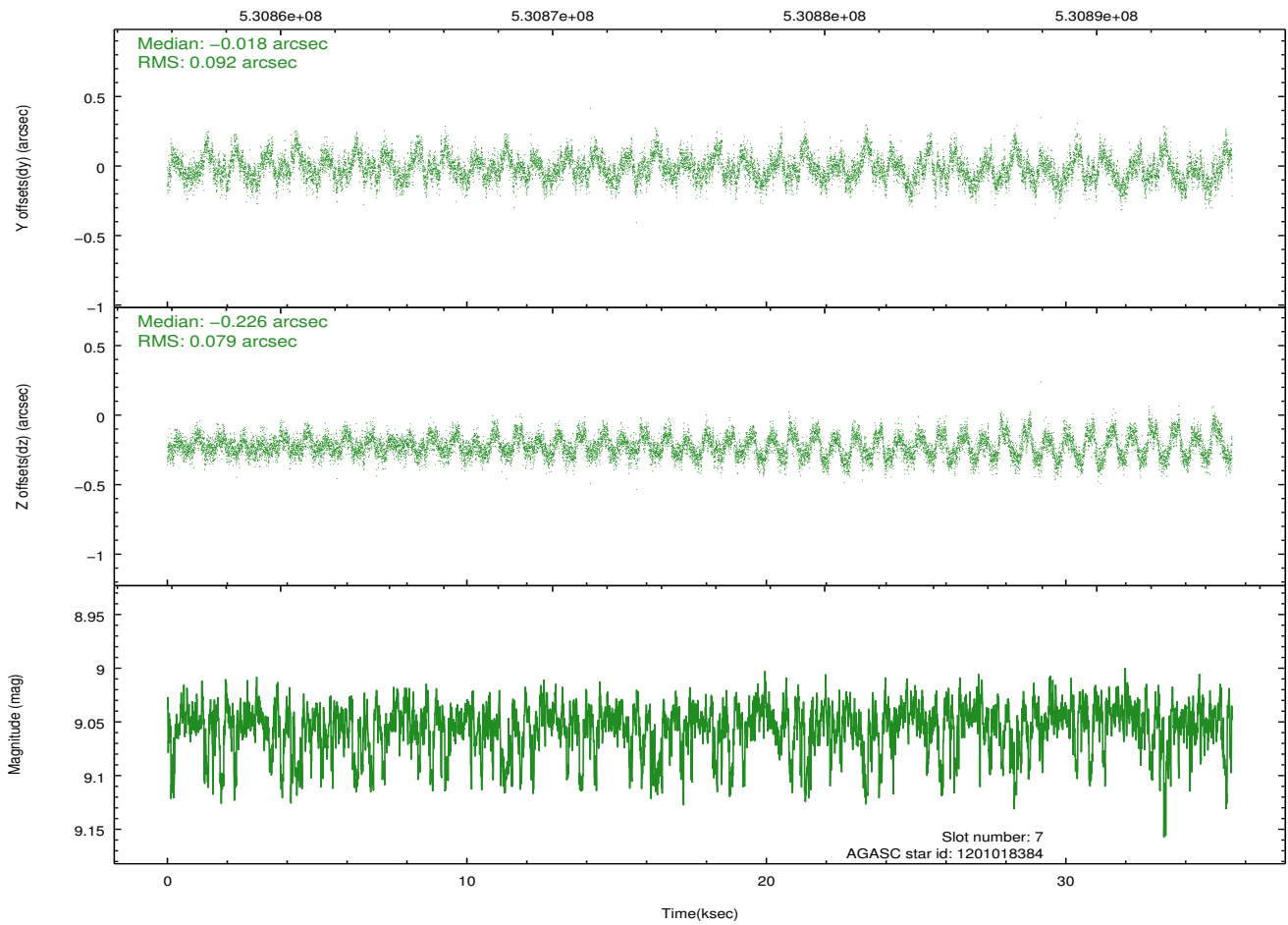
2.4.4 Slot 6



2.4.5 Slot 7

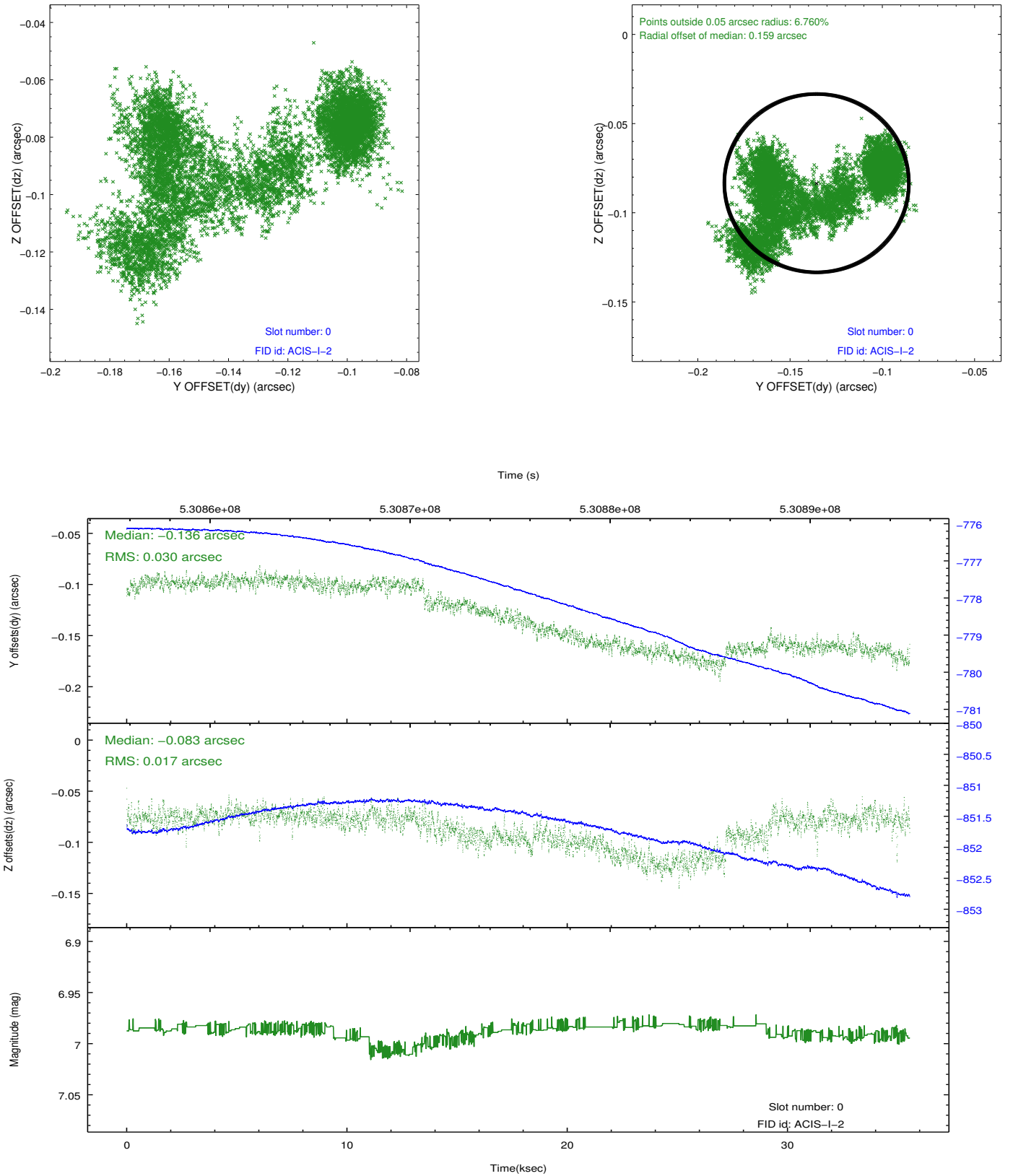


Time (s)

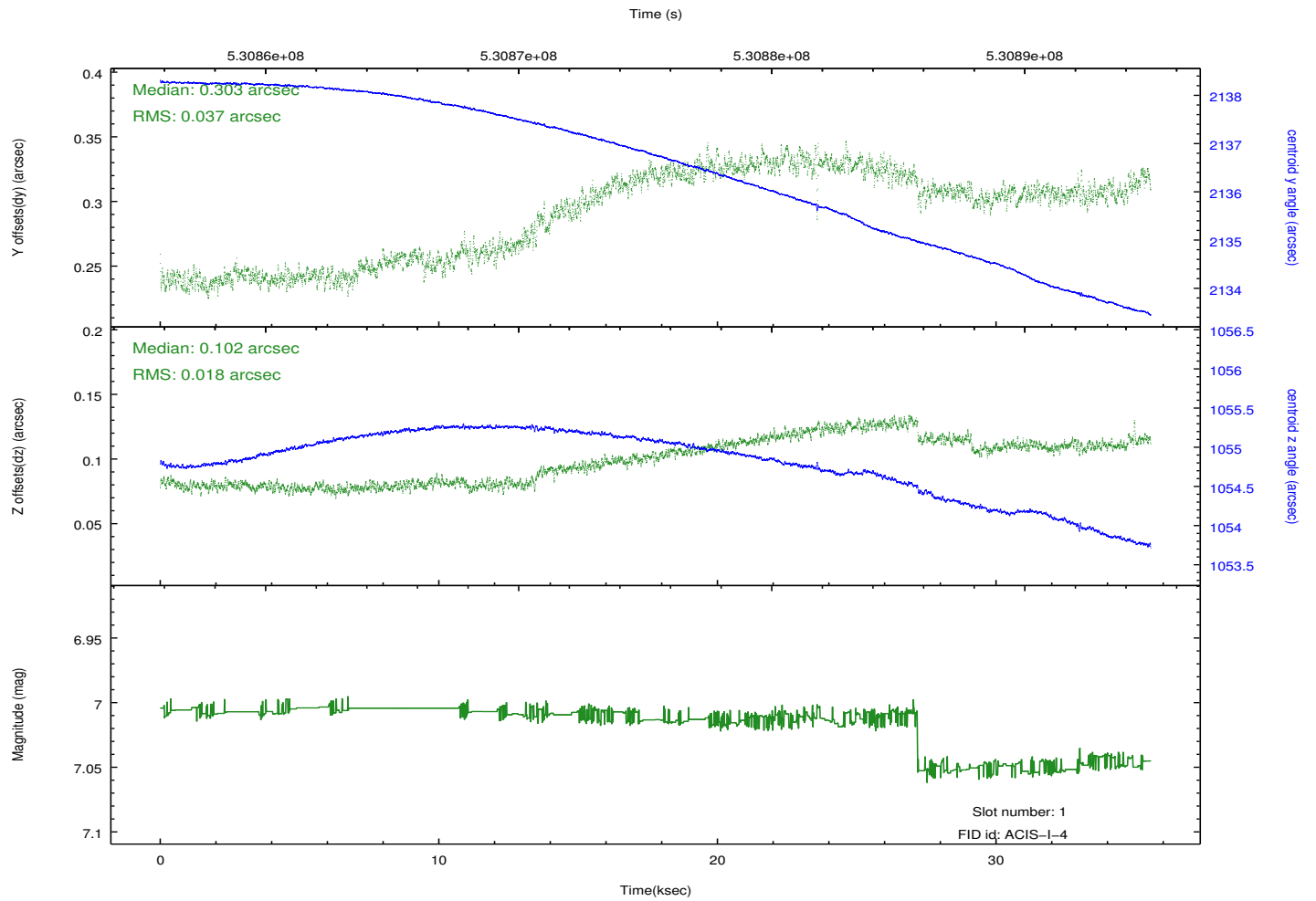
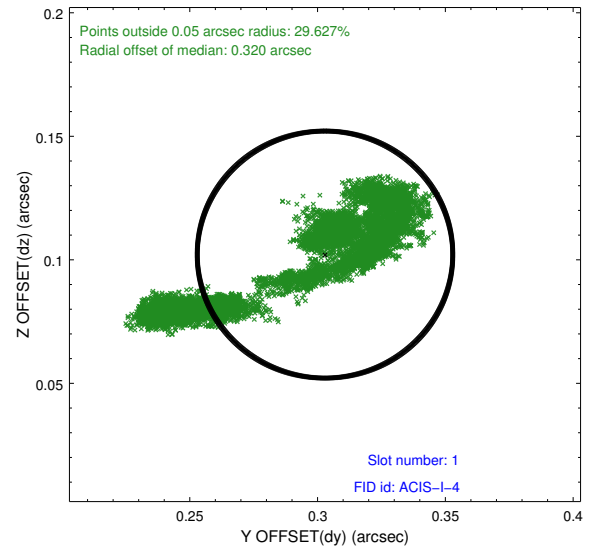
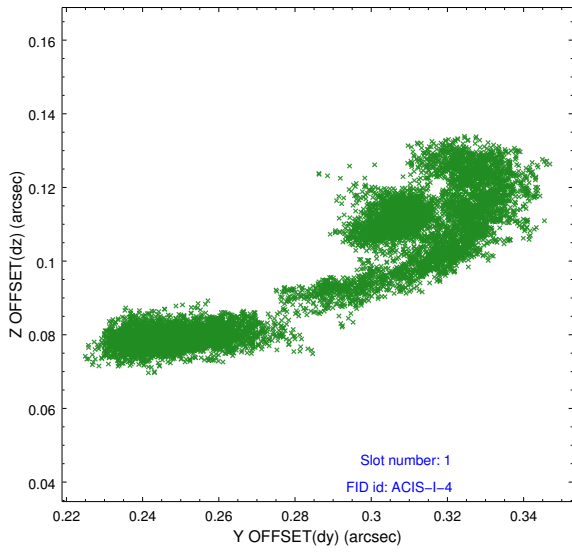


2.5 FID Slots

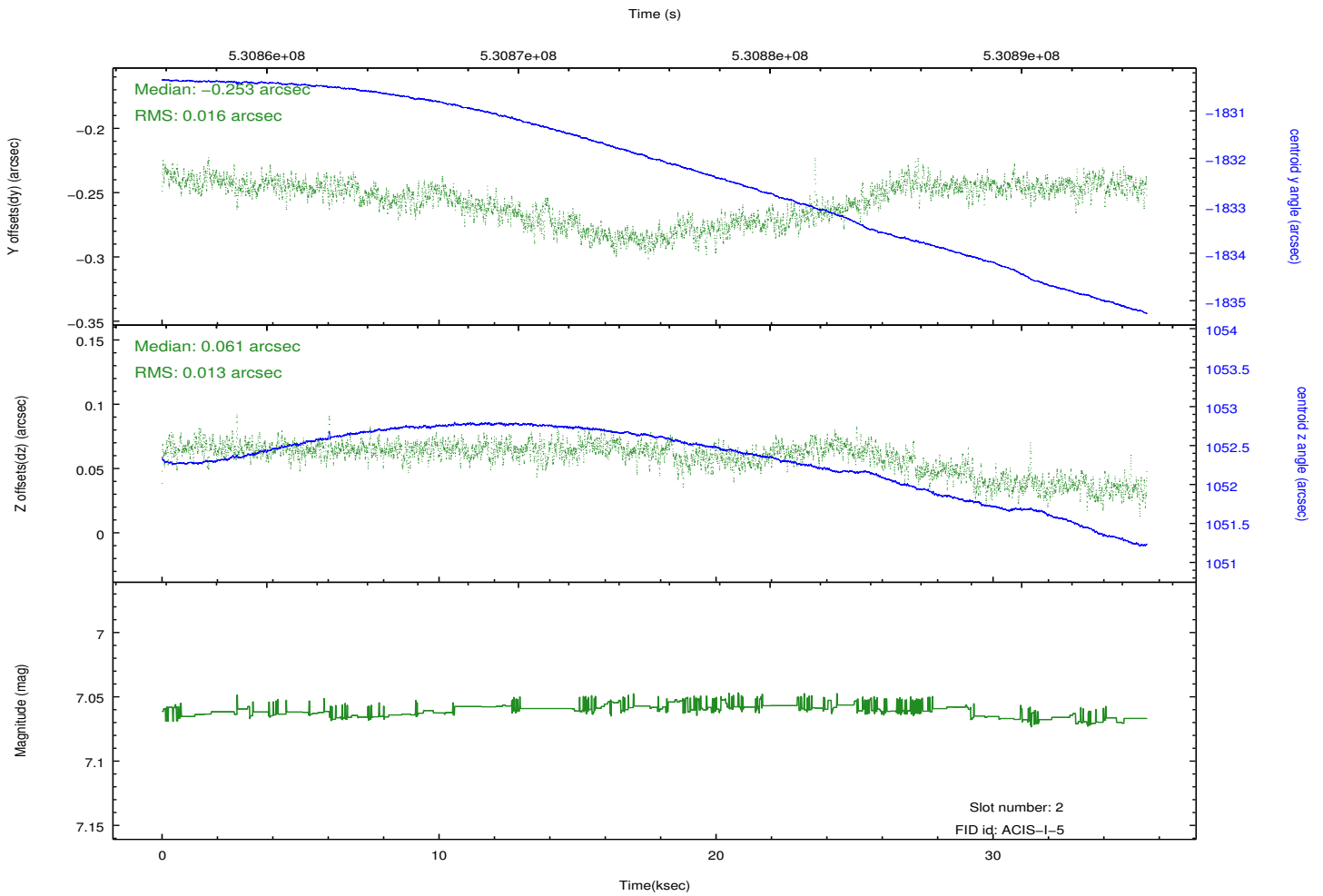
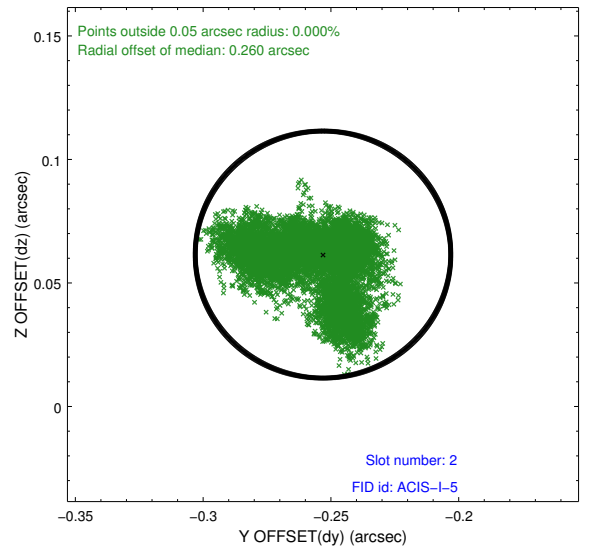
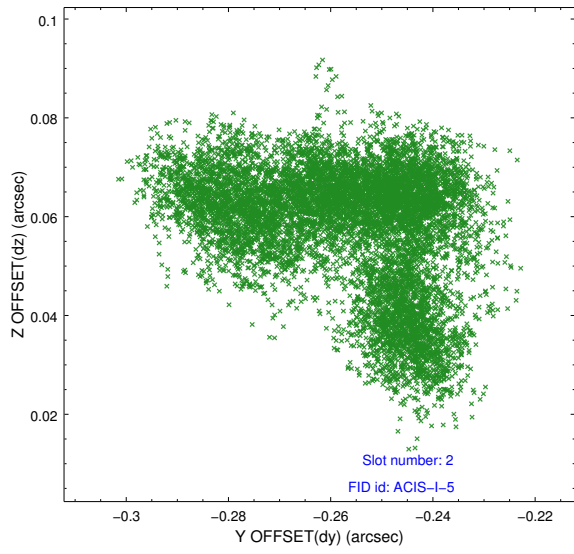
2.5.1 Slot 0



2.5.2 Slot 1



2.5.3 Slot 2



A Summary

A.1 Status

V&V Scientist	Joy Nichols
V&V Date (YYYY-MM-DD)	2014.10.30
V&V Edition	1
V&V Disposition and Status	OK
V&V Charge Time	34.972799869776

A.2 Comments