

V&V Reference Report

L2 ASCDS Version : 10.3.1

Observation 17585 - L2 Version 1
Chandra X-Ray Center

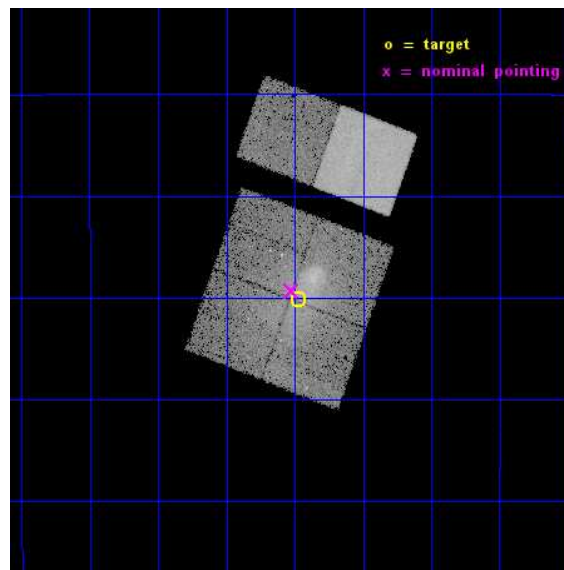
L2 Processing Date : Jan 17 2015

Contents

1	Front	2
2	OBI	3
2.1	OBI	3
2.1.1	Images	3
2.1.2	Bias	3
2.1.3	Parameters	4
2.1.4	Events	4
2.2	Compared Parameters	5
2.3	Aspect	6
2.4	Star Slots	9
2.4.1	Slot 3	9
2.4.2	Slot 4	10
2.4.3	Slot 5	11
2.4.4	Slot 6	12
2.4.5	Slot 7	13
2.5	FID Slots	14
2.5.1	Slot 0	14
2.5.2	Slot 1	15
2.5.3	Slot 2	16
A	Summary	17
A.1	Status	17
A.2	Comments	17

1 Front

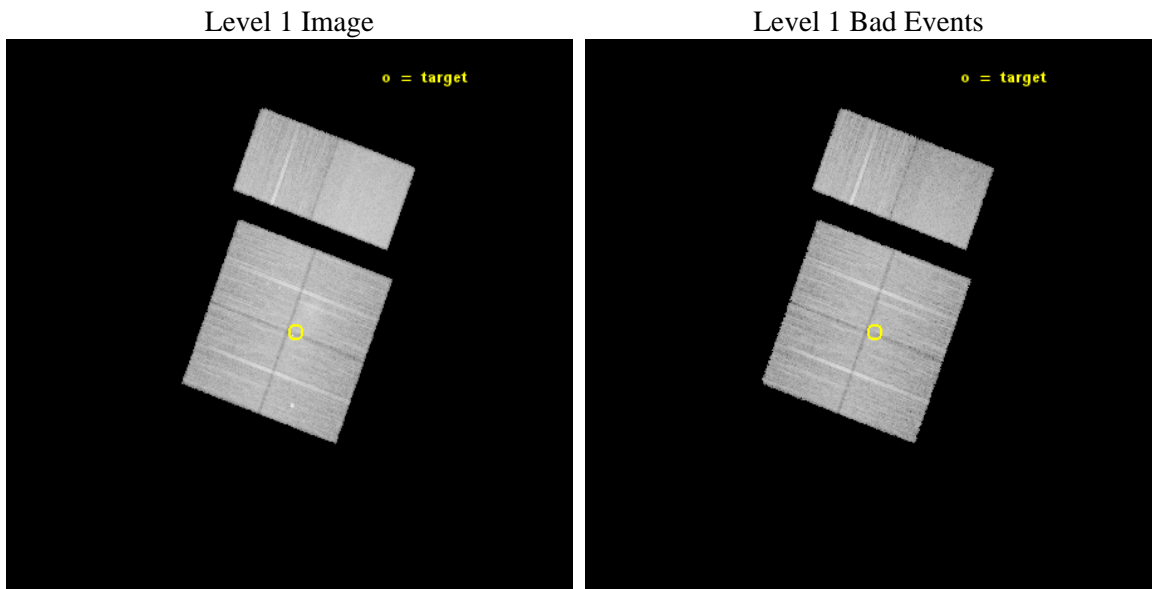
seq_num	801476	Sequence number
obs_id	17585	Observation id
title	Abell 3411: Confronting the Relic Shock Acceleration Mystery	Propo
observer	Dr Reinout van Weeren	Principal investigator
object	Abell 3411	Source name
dtcycle	0	
cycle	P	events from which exps? Prim/Second/Both
ra_targ	130.49375	Observer's specified target RA [deg]
dec_targ	-17.503472	Observer's specified target Dec [deg]
ra_nom	130.50607762612	Nominal RA [deg]
dec_nom	-17.488578201677	Nominal Dec [deg]
roll_nom	20.212401521255	Nominal Roll [deg]
revision	1	Processing version of data
ontime	23964.800357103	Sum of GTIs [s]
livetime	23661.343625111	Livetime [s]
ontime0	23961.559276819	Sum of GTIs [s]
ontime1	23964.800357103	Sum of GTIs [s]
ontime2	23961.559286714	Sum of GTIs [s]
ontime3	23964.800357103	Sum of GTIs [s]
ontime6	23964.800357103	Sum of GTIs [s]
ontime7	23964.800357103	Sum of GTIs [s]
l2events	153714	Number of level 2 events



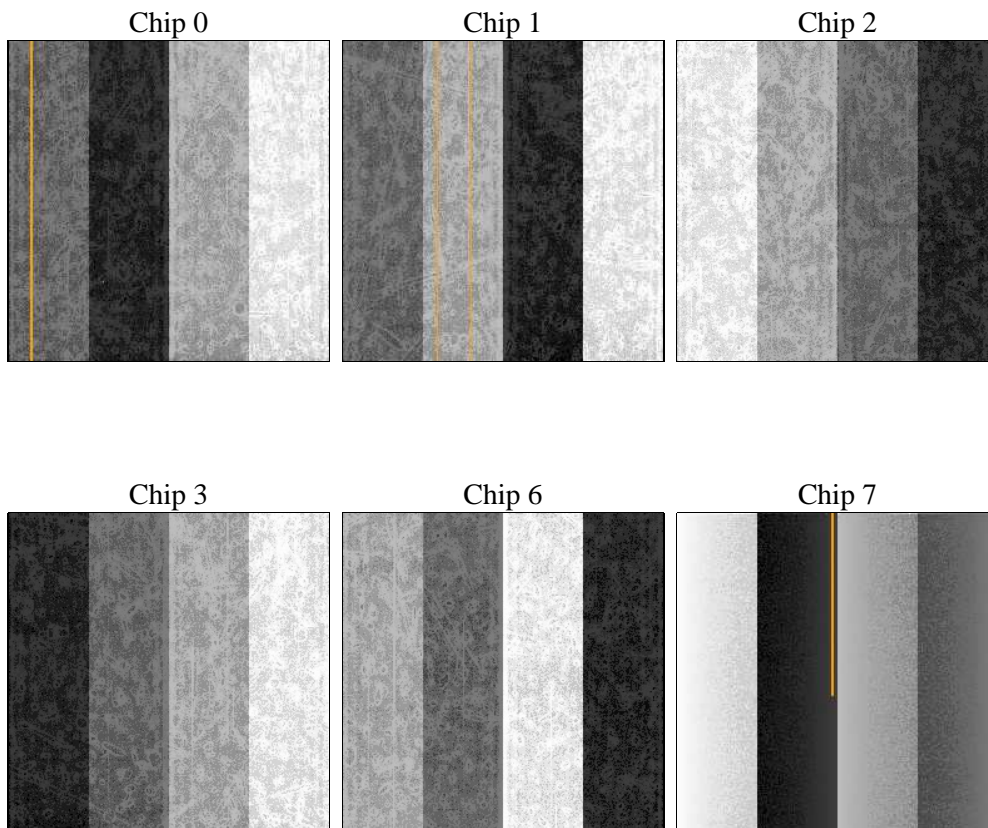
2 OBI

2.1 OBI

2.1.1 Images



2.1.2 Bias



2.1.3 Parameters

obi_num	0	Obi number	sched_exp_time	24000.000000	[s] Scheduled observation exposure time
ascdsver	10.3.1	Processing system revision	ontime	23964.800357103	Sum of GTIs [s]
caldsver	4.6.5	 	ontime0	23961.559276819	Sum of GTIs [s]
date	2015-01-18T00:04:41	Date and time of file creation	ontime1	23964.800357103	Sum of GTIs [s]
revision	1	Processing version of data	ontime2	23961.559286714	Sum of GTIs [s]
			ontime3	23964.800357103	Sum of GTIs [s]
			ontime6	23964.800357103	Sum of GTIs [s]
			ontime7	23964.800357103	Sum of GTIs [s]
			l1events	776202	Number of level 1 events

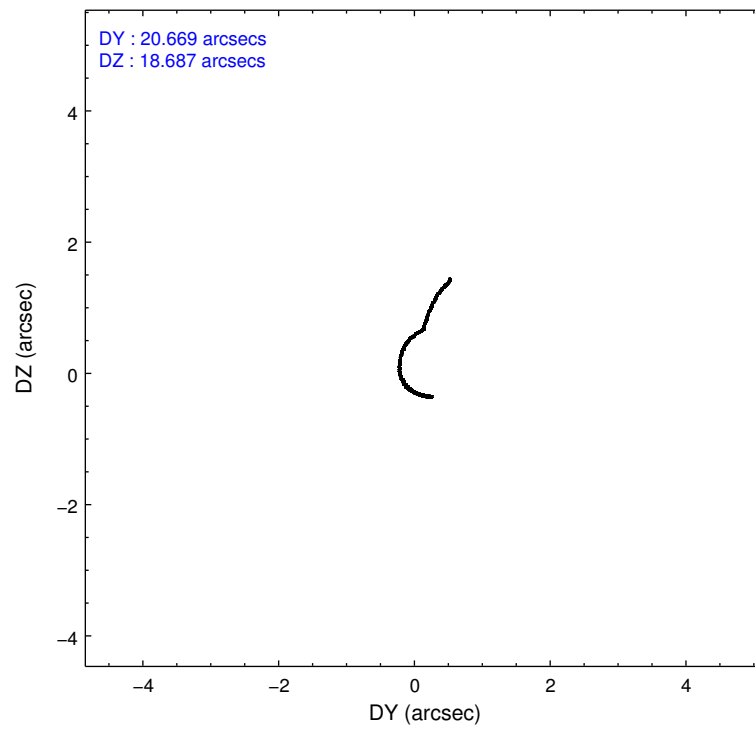
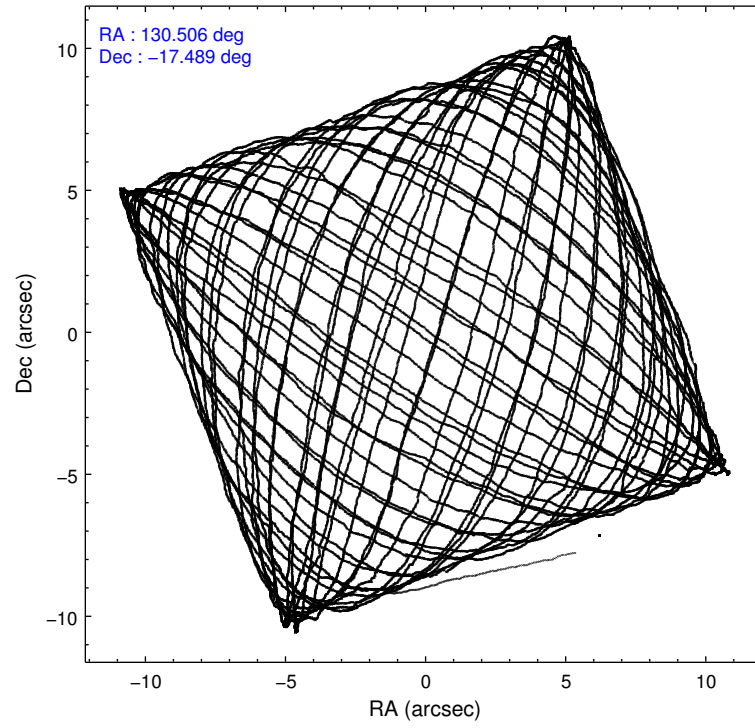
2.1.4 Events

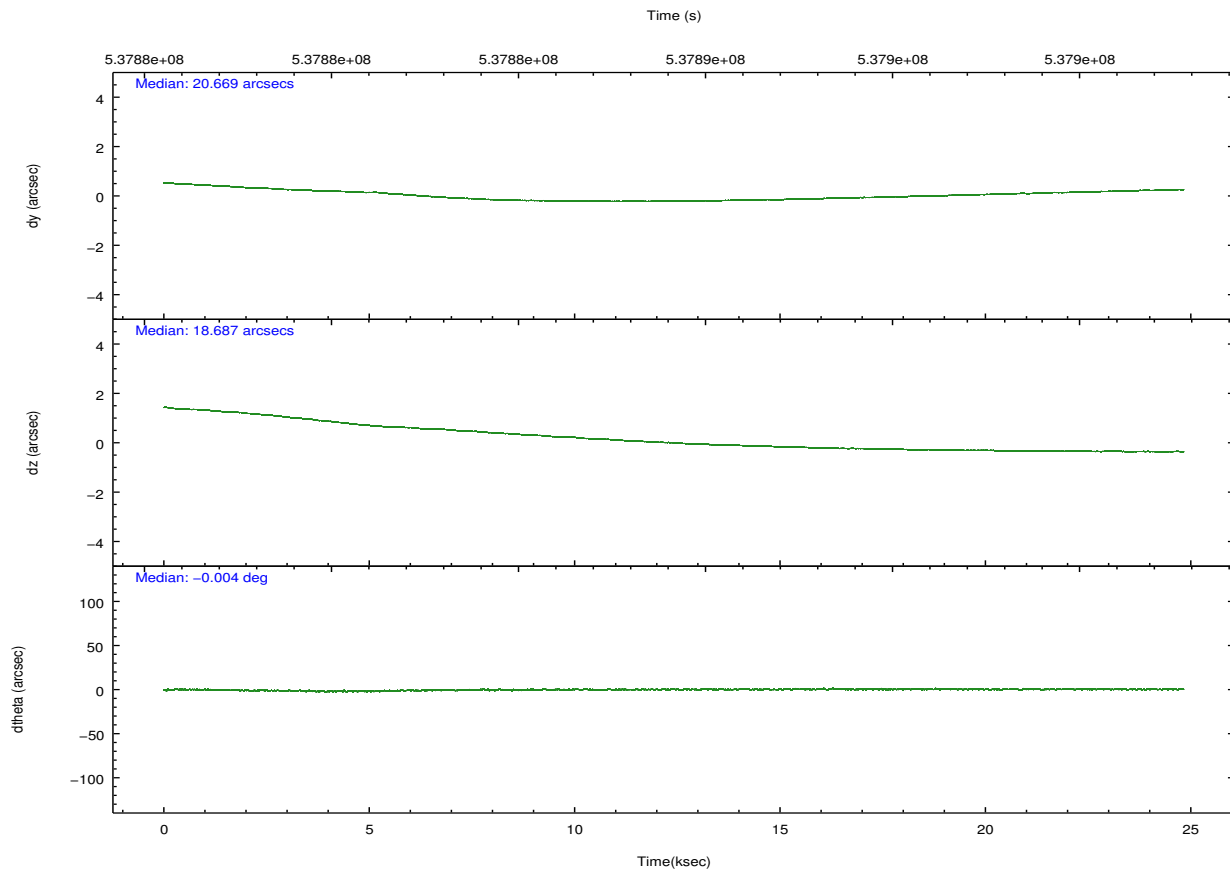
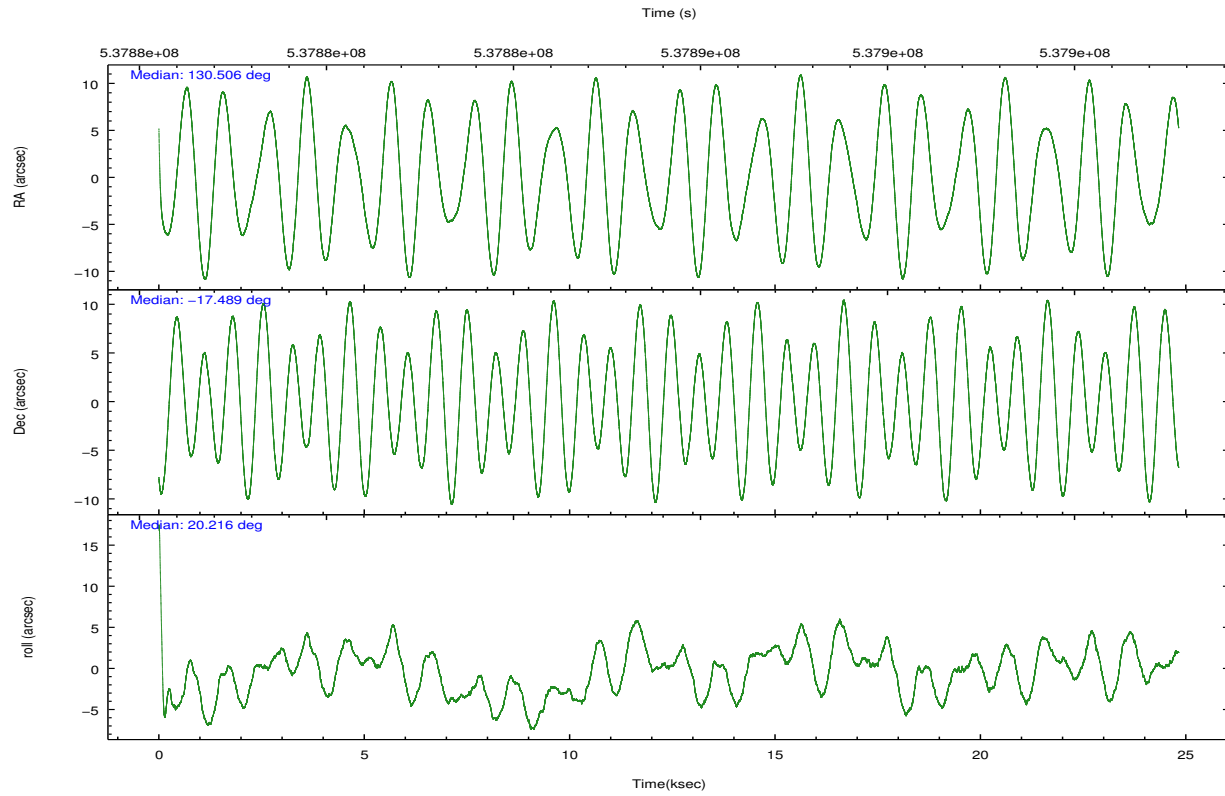
	ccd 0	ccd 1	ccd 2	ccd 3	ccd 6	ccd 7		ccd 0	ccd 1	ccd 2	ccd 3	ccd 6	ccd 7
level 1 events	112444	118539	125694	127359	125786	166380	grade 0 events	7378	10649	7473	13169	5133	6340
rejected events	94946	96794	108551	103379	110724	93327		6%	8%	5%	10%	4%	3%
rejected %	84%	81%	86%	81%	88%	56%	grade 1 events	63	79	90	111	62	188
								0%	0%	0%	0%	0%	0%
							grade 2 events	3910	4400	3704	4007	3471	14993
								3%	3%	2%	3%	2%	9%
							grade 3 events	1573	1552	1558	1804	1505	6250
								1%	1%	1%	1%	1%	3%
							grade 4 events	1522	1690	1562	1808	1547	6102
								1%	1%	1%	1%	1%	3%
							grade 5 events	5776	6079	5595	6396	6320	16715
								5%	5%	4%	5%	5%	10%
							grade 6 events	3118	3456	2852	3193	3410	39378
								2%	2%	2%	2%	2%	23%
							grade 7 events	89104	90634	102860	96871	104338	76414
								79%	76%	81%	76%	82%	45%

2.2 Compared Parameters

Parameter	Planned	Actual	Parameter	Planned	Actual
Instrument	ACIS	ACIS	Obspar format version number	7	7
Detector	ACIS-012367	ACIS-012367	Obspar file type	PREDICTED	ACTUAL
Grating	NONE	NONE	Obspar update status	NONE	UPDATED
Data mode	VFAINT	VFAINT	CCD I0 on	Y	Y
Observation mode	POINTING	POINTING	CCD I1 on	Y	Y
[deg] Pointing RA	130.487629	130.5060776261235	CCD I2 on	Y	Y
[deg] Pointing Dec	-17.509852	-17.48857820167697	CCD I3 on	Y	Y
[deg] Pointing Roll	19.998157	20.21240152125461	CCD S0 on	N	N
[mm] SIM focus pos	-0.782348	-0.7809083437167272	CCD S1 on	N	N
[mm] SIM defocus	0	0.001439871863259334	CCD S2 on	O2	Y
[mm] SIM translation stage pos	-233.592463	-233.5874344608287	CCD S3 on	O1	Y
[mm] SIM translation stage offset	0	-0.005018542100998502	CCD S4 on	N	N
[s] Observation start time (MET)	537877563.184000	537875635.63109	CCD S5 on	N	N
Observation start date	2015-01-17T10:24:56	2015-01-17T09:53:55	Number of optional ACIS chips dropped	0	0
[s] Observation end time (MET)	537901563.184000	537902473.20759	On-chip summing requested	N	N
Observation end date	2015-01-17T17:04:56	2015-01-17T17:21:13	Subarray requested	NONE	NONE
Read mode	TIMED	TIMED	Alternating exposures requested	N	N
			[s] Primary exposure time	0.000000	3.2

2.3 Aspect



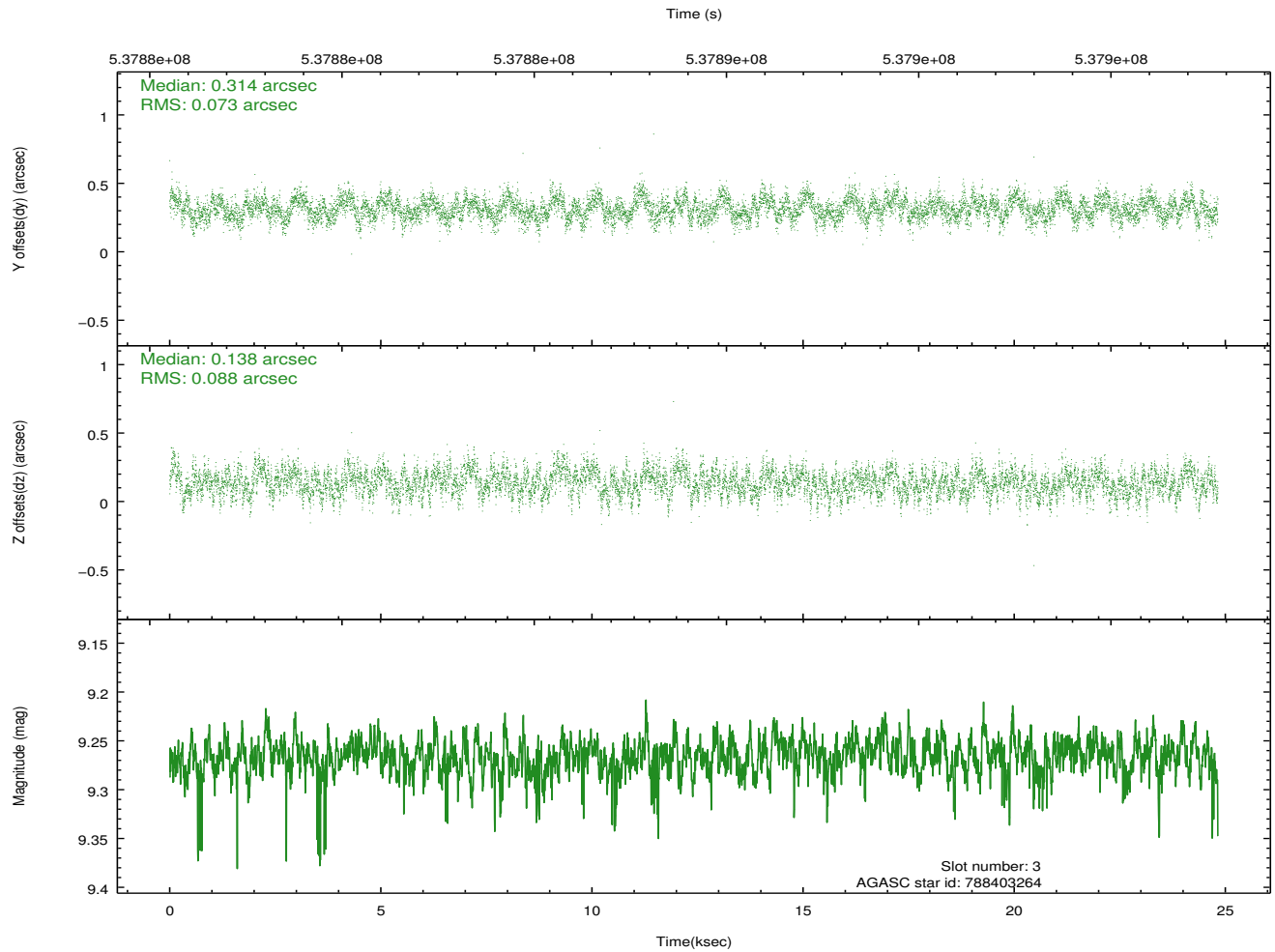
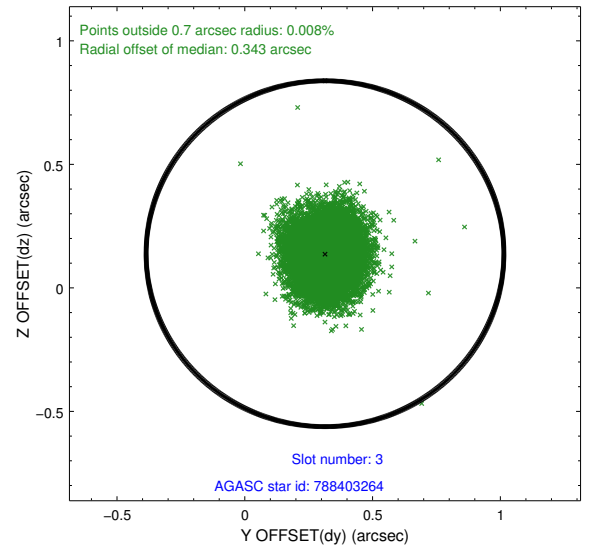
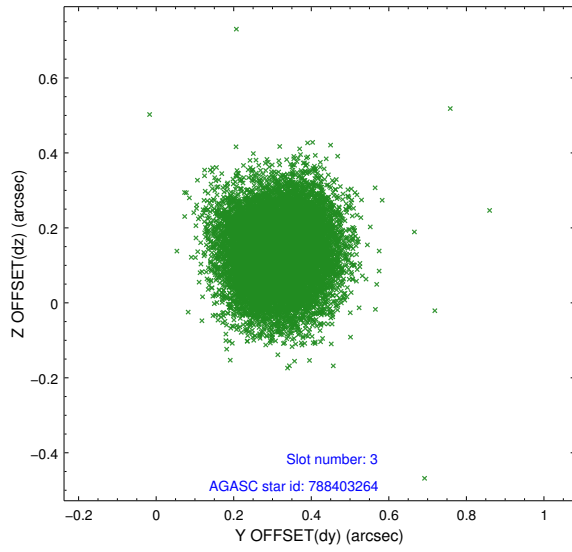


Slot Statistics

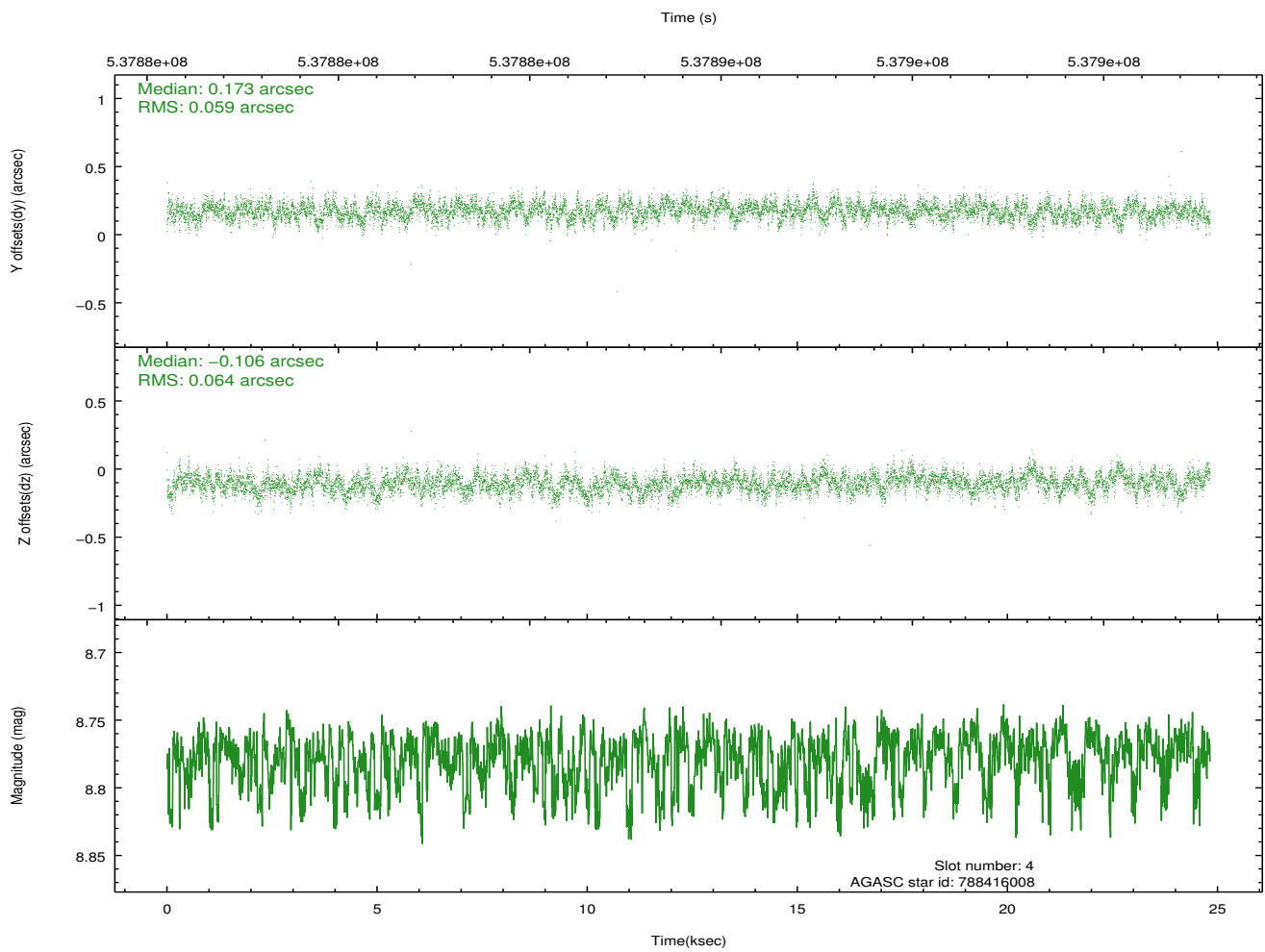
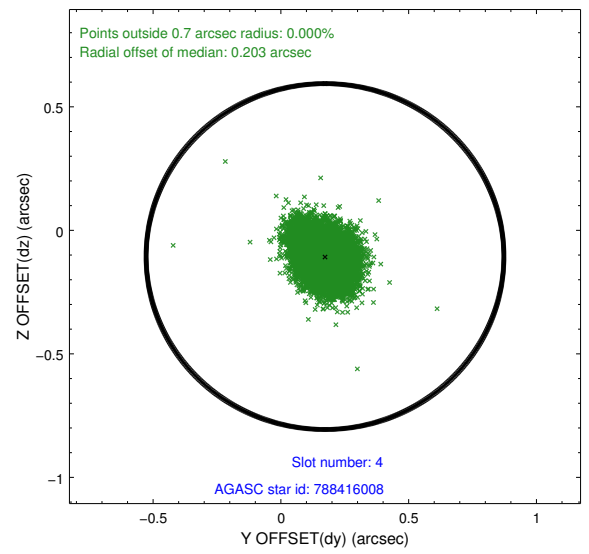
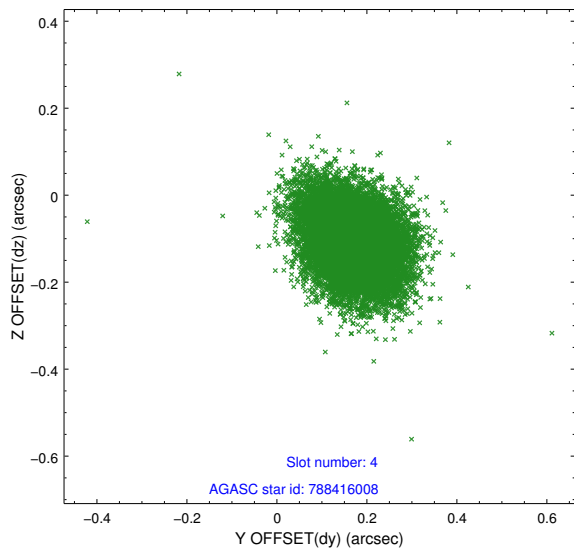
slot	status	used	id	mag	n_pts	med_dy	med_dz	dr1	dr2	ra	dec	mean_y	mean_z
0	FID		ACIS-I-1	7.07	6055	0.047	0.026	0.012	0.042	0.000000	0.000000	918.69	-842.52
1	FID		ACIS-I-5	7.06	6054	-0.302	0.033	0.009	0.015	0.000000	0.000000	-1829.78	1054.80
2	FID		ACIS-I-6	7.06	6054	0.164	0.009	0.013	0.048	0.000000	0.000000	384.11	1699.52
3	GUIDE	used	788403264	9.27	12100	0.314	0.138	0.123	0.194	129.988745	-17.706292	-1849.98	-80.69
4	GUIDE	used	788416008	8.78	12103	0.173	-0.106	0.093	0.152	129.756864	-17.301734	-2105.45	1558.90
5	GUIDE	used	788546808	8.87	12098	-0.003	0.186	0.100	0.165	131.022424	-17.370468	1897.37	-158.75
6	GUIDE	used	788548808	8.67	12104	-0.290	-0.056	0.094	0.150	130.875619	-17.230270	1597.46	488.47
7	GUIDE	used	788552320	8.47	12107	-0.187	-0.156	0.083	0.134	130.958057	-17.020554	2123.66	1097.52

2.4 Star Slots

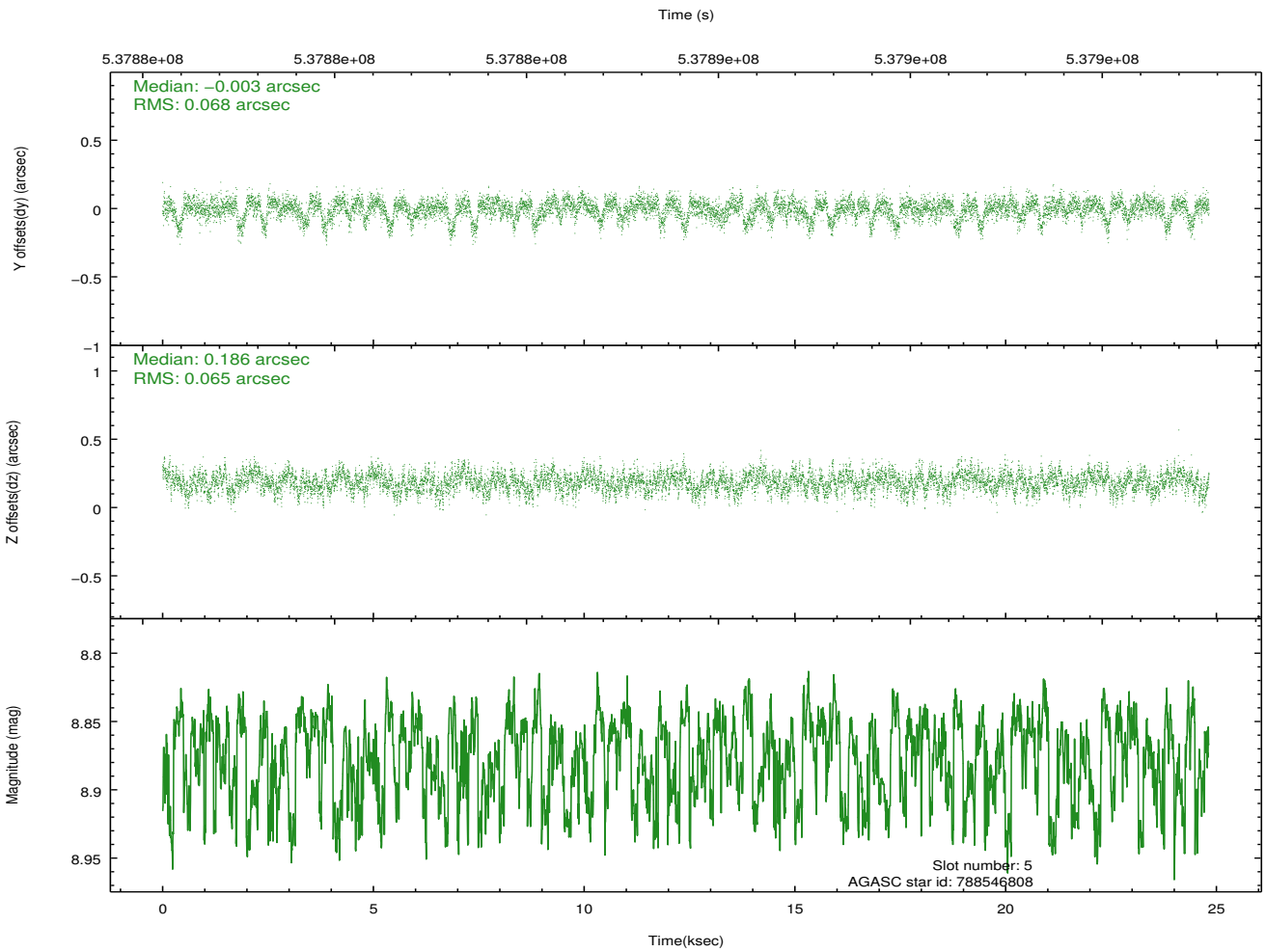
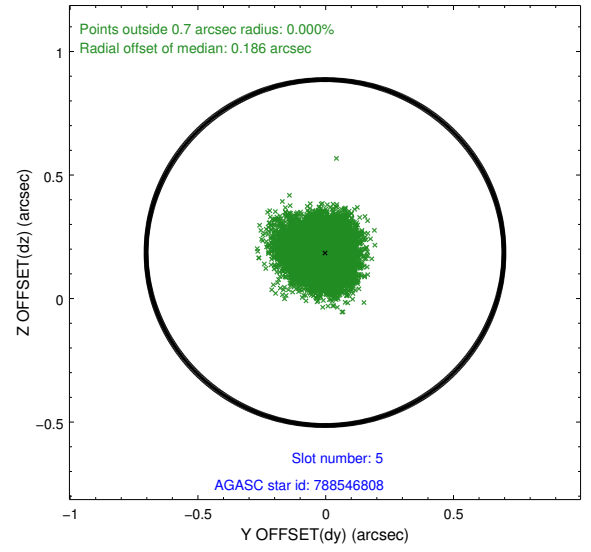
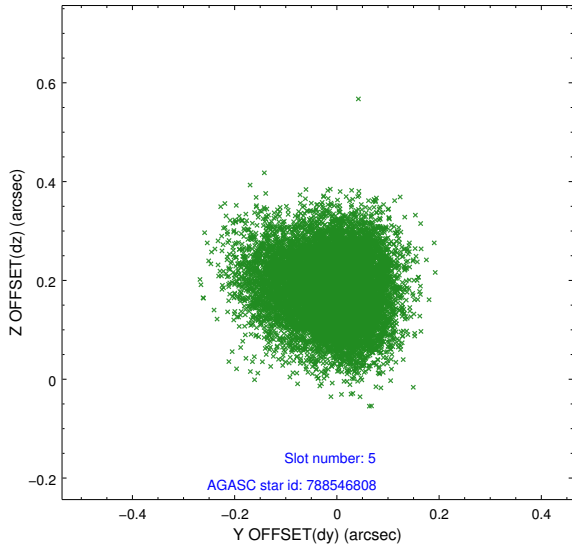
2.4.1 Slot 3



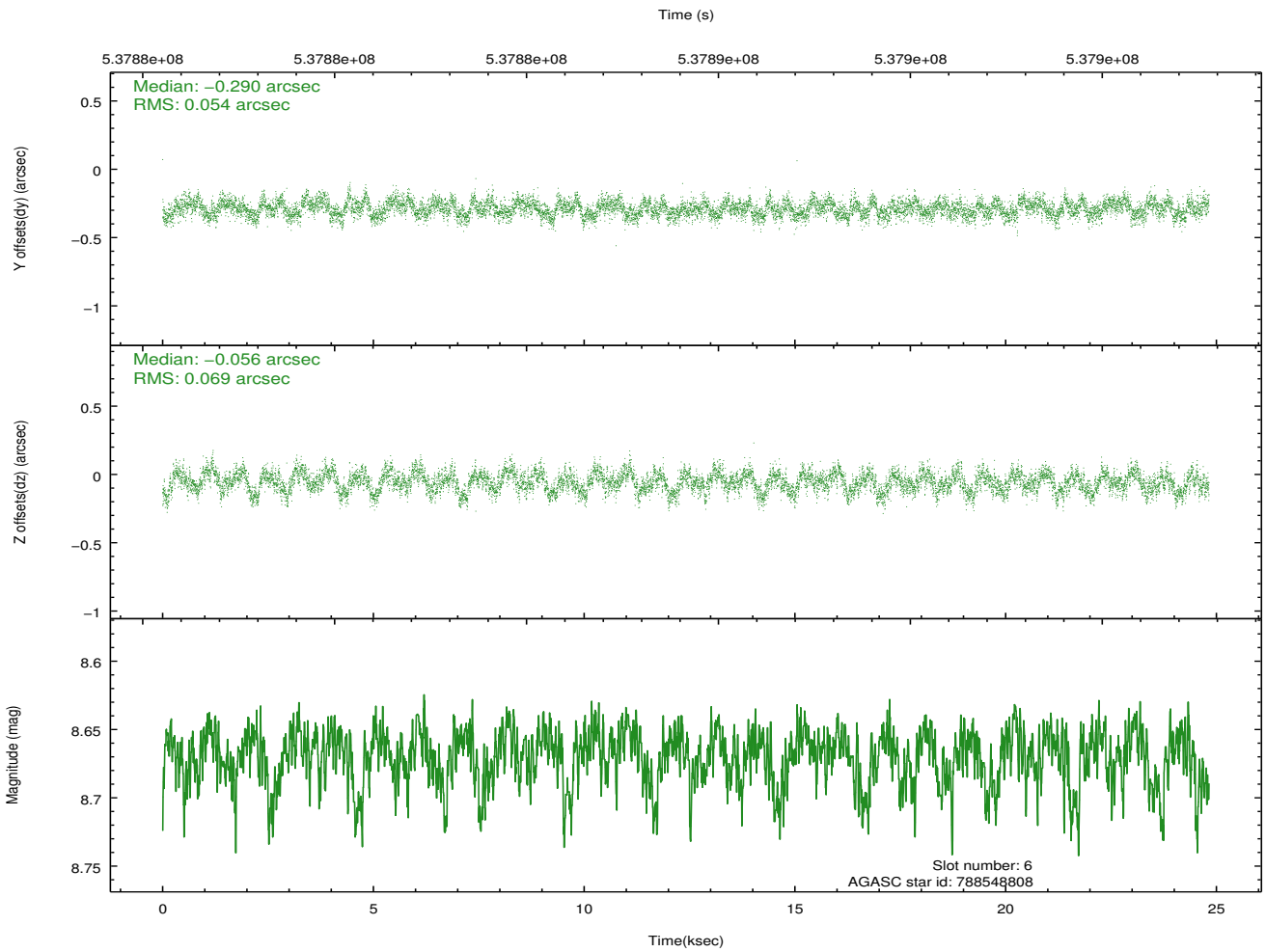
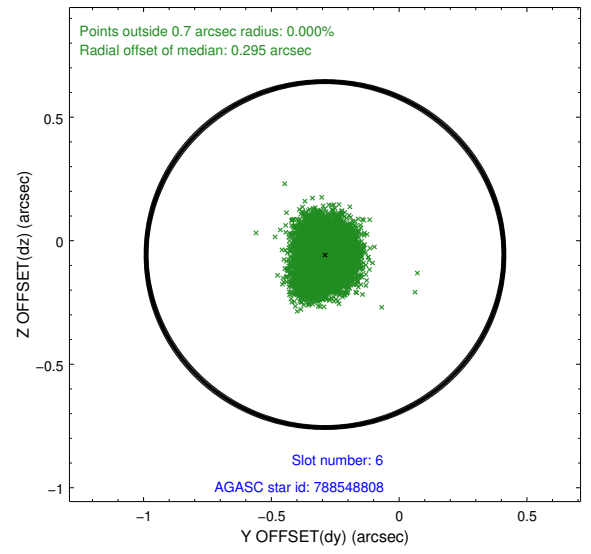
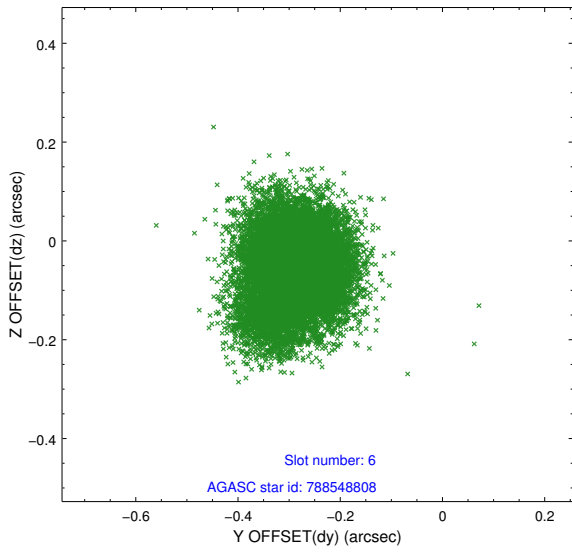
2.4.2 Slot 4



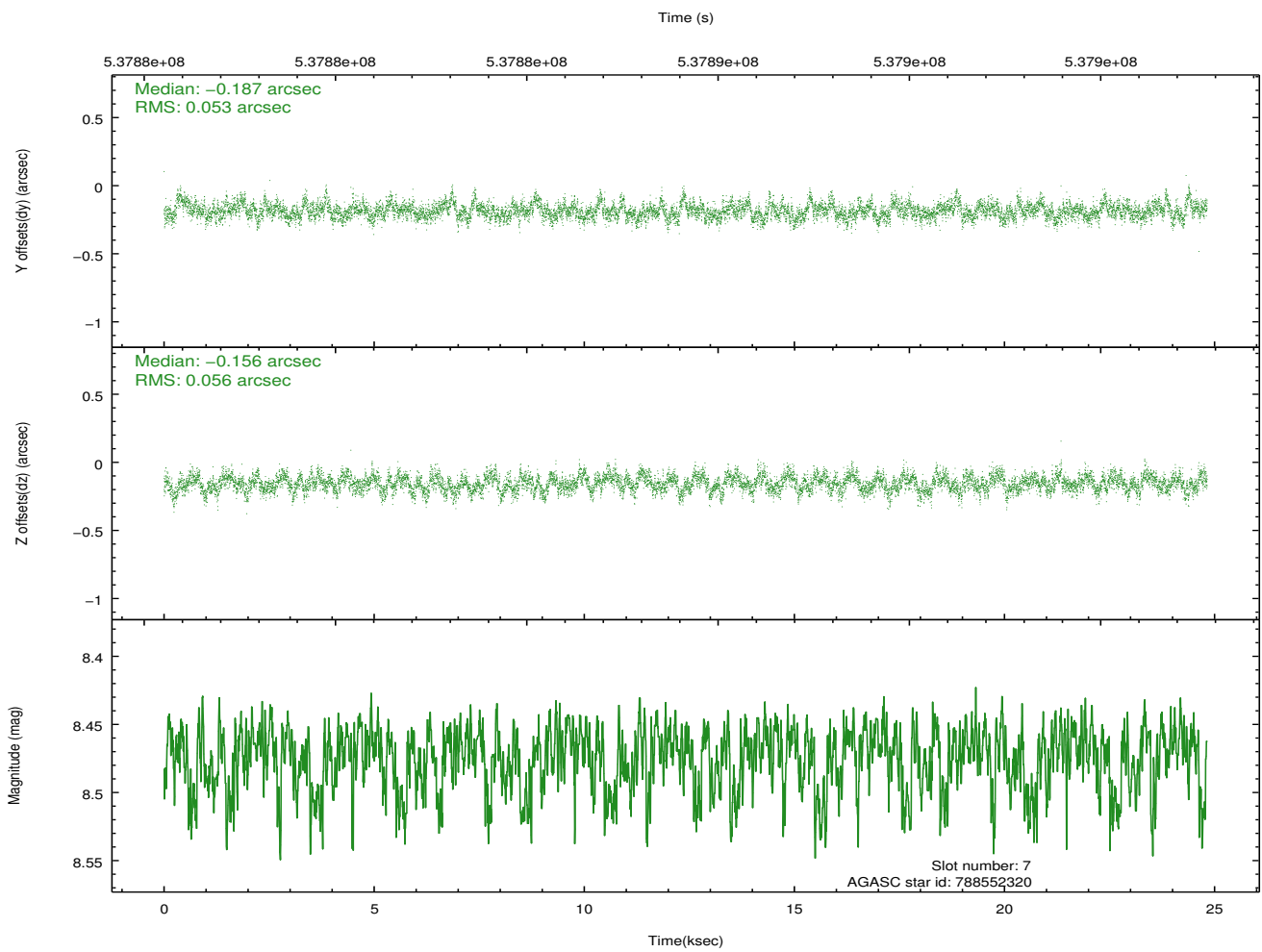
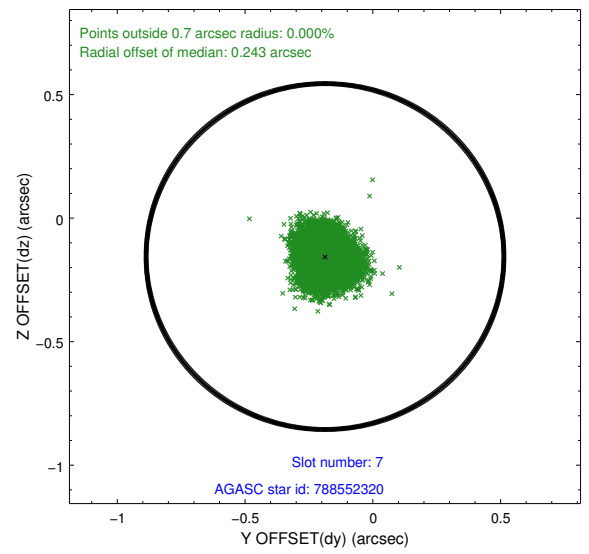
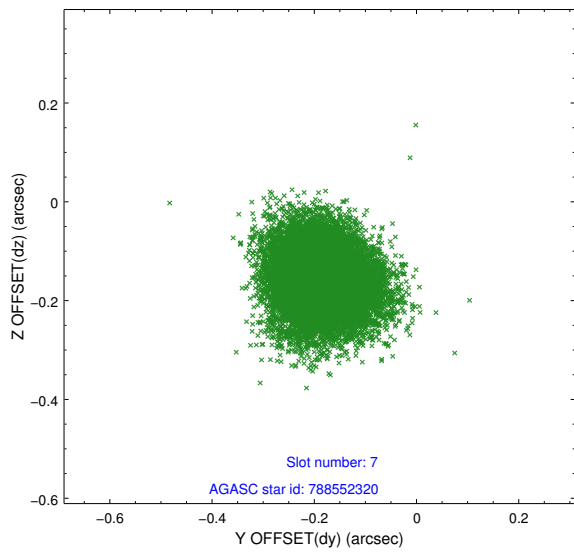
2.4.3 Slot 5



2.4.4 Slot 6

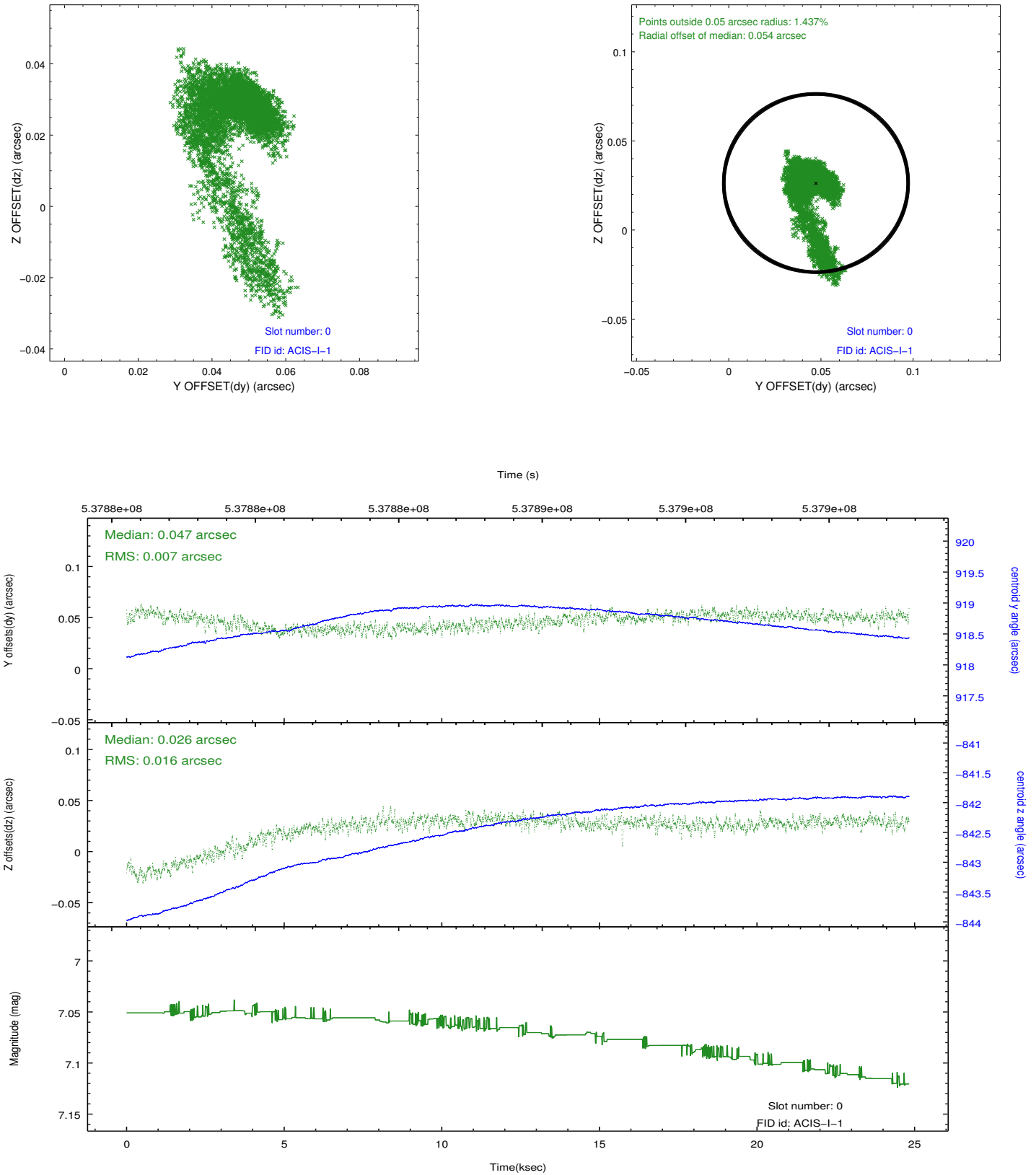


2.4.5 Slot 7

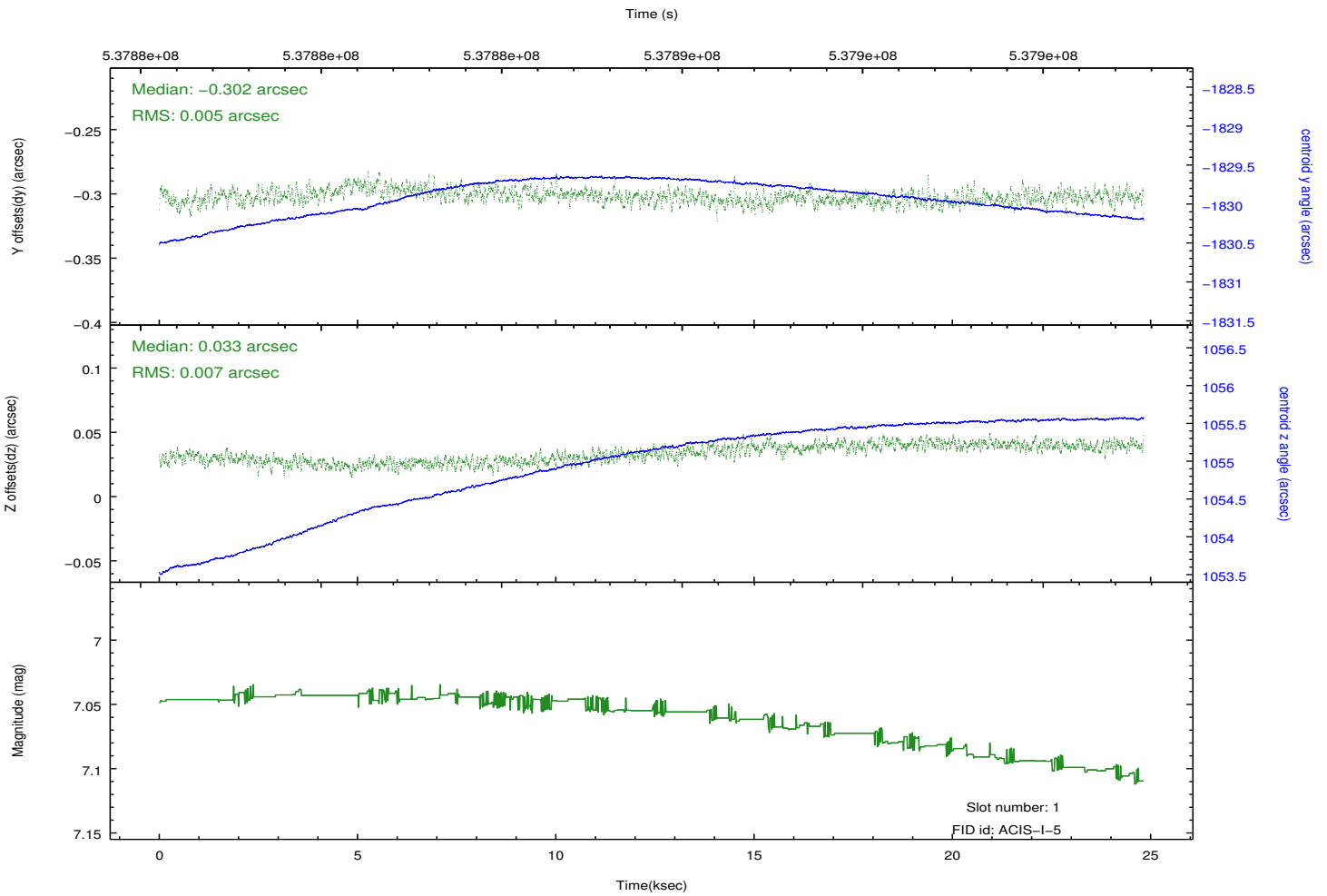
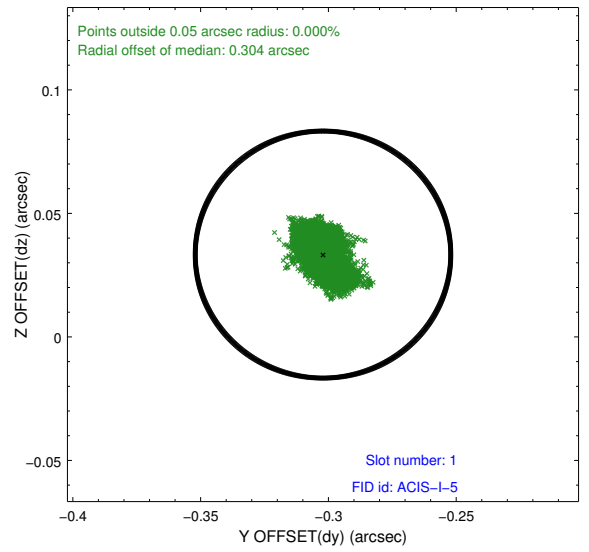
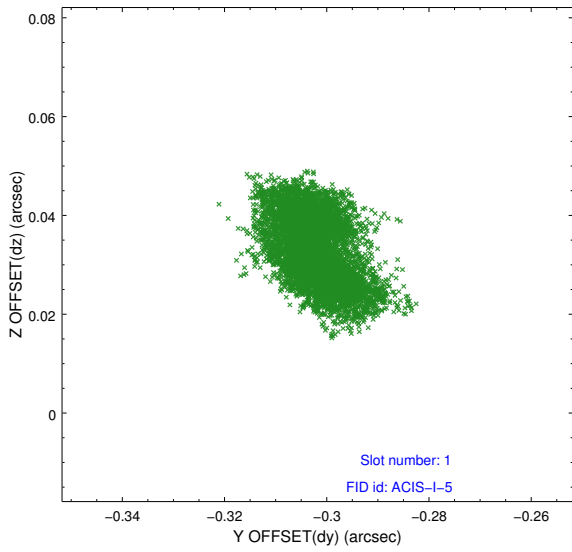


2.5 FID Slots

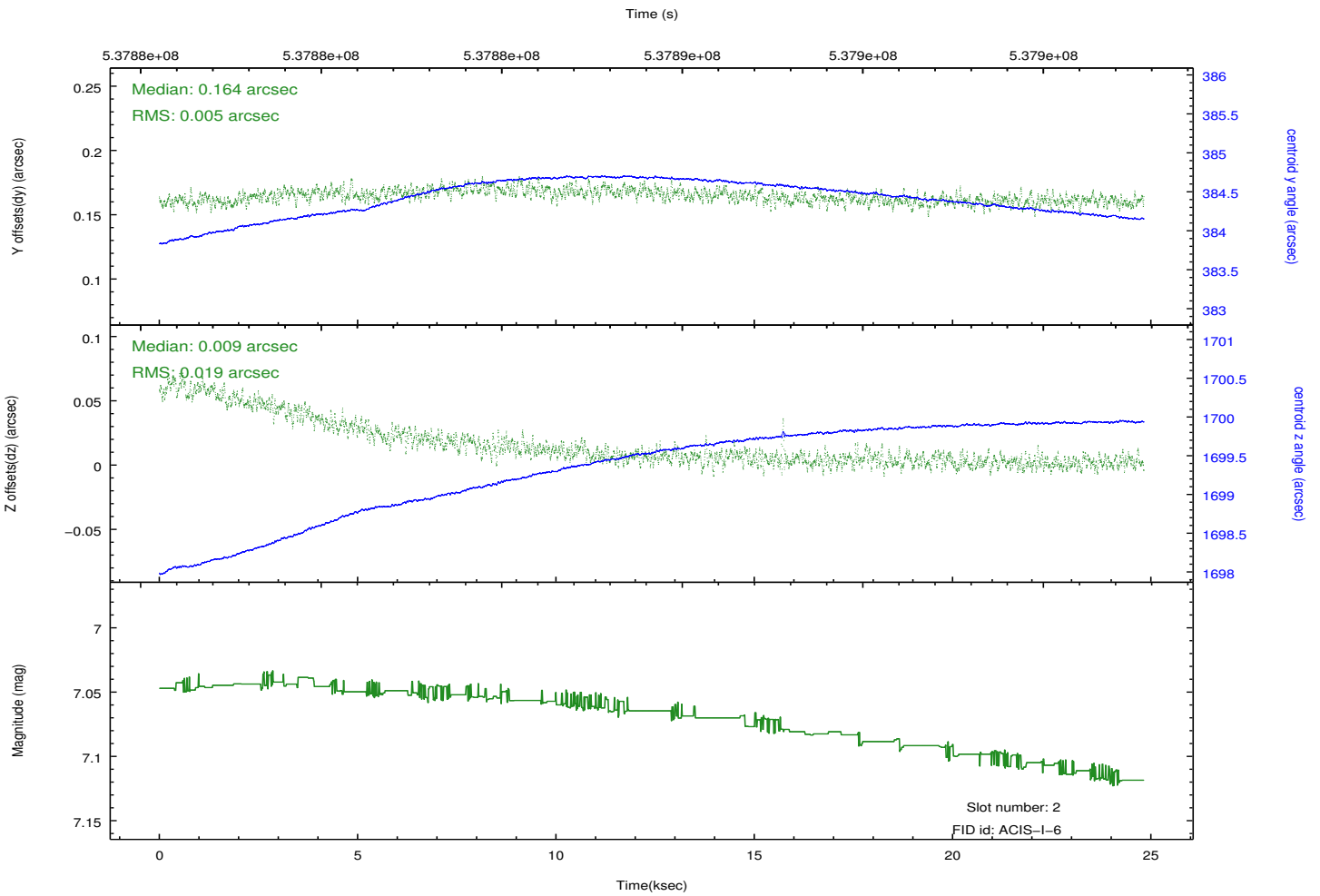
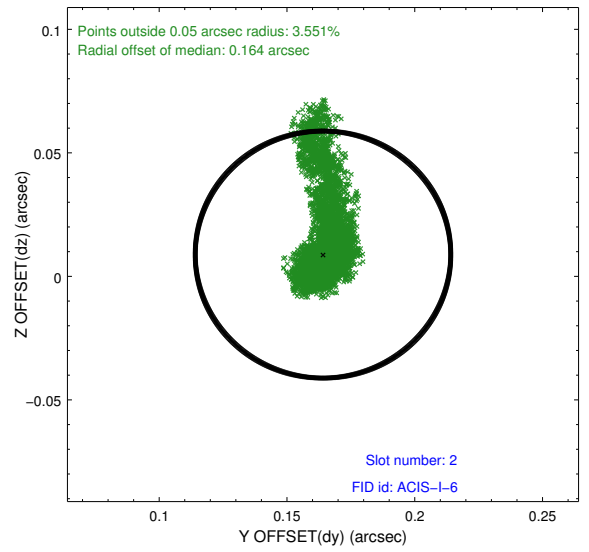
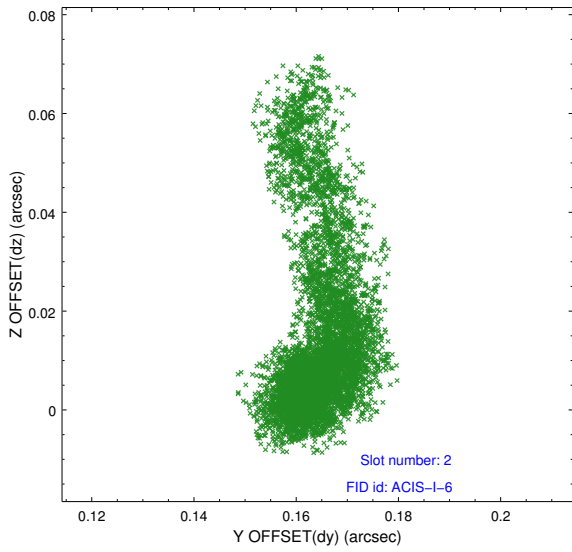
2.5.1 Slot 0



2.5.2 Slot 1



2.5.3 Slot 2



A Summary

A.1 Status

V&V Scientist	Joy Nichols
V&V Date (YYYY-MM-DD)	2015.01.20
V&V Edition	1
V&V Disposition and Status	OK
V&V Charge Time	23.964800357103

A.2 Comments