

# V&V Reference Report

## L2 ASCDS Version : 10.4.3.1

Observation 18725 - L2 Version 1  
Chandra X-Ray Center

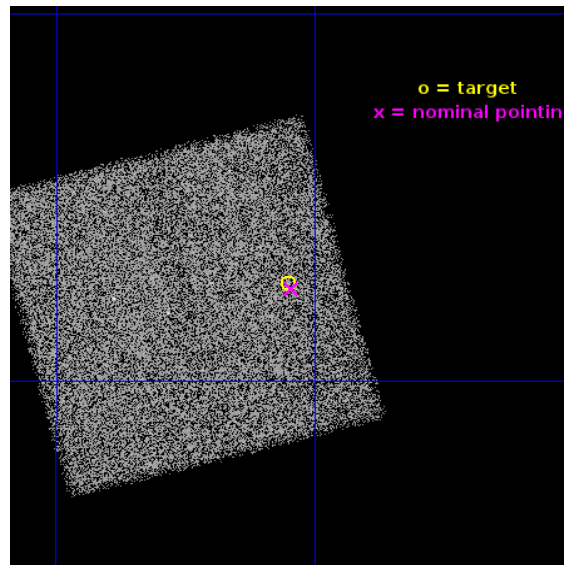
L2 Processing Date : Mar 8 2016

## Contents

<b>1</b>	<b>Front</b>	<b>2</b>
<b>2</b>	<b>OBI</b>	<b>3</b>
2.1	OBI . . . . .	3
2.1.1	Images . . . . .	3
2.1.2	Bias . . . . .	3
2.1.3	Parameters . . . . .	4
2.1.4	Events . . . . .	4
2.2	Compared Parameters . . . . .	5
2.3	Aspect . . . . .	6
2.4	Star Slots . . . . .	9
2.4.1	Slot 3 . . . . .	9
2.4.2	Slot 4 . . . . .	10
2.4.3	Slot 5 . . . . .	11
2.4.4	Slot 6 . . . . .	12
2.4.5	Slot 7 . . . . .	13
2.5	FID Slots . . . . .	14
2.5.1	Slot 0 . . . . .	14
2.5.2	Slot 1 . . . . .	15
2.5.3	Slot 2 . . . . .	16
<b>A</b>	<b>Summary</b>	<b>17</b>
A.1	Status . . . . .	17
A.2	Comments . . . . .	17

# 1 Front

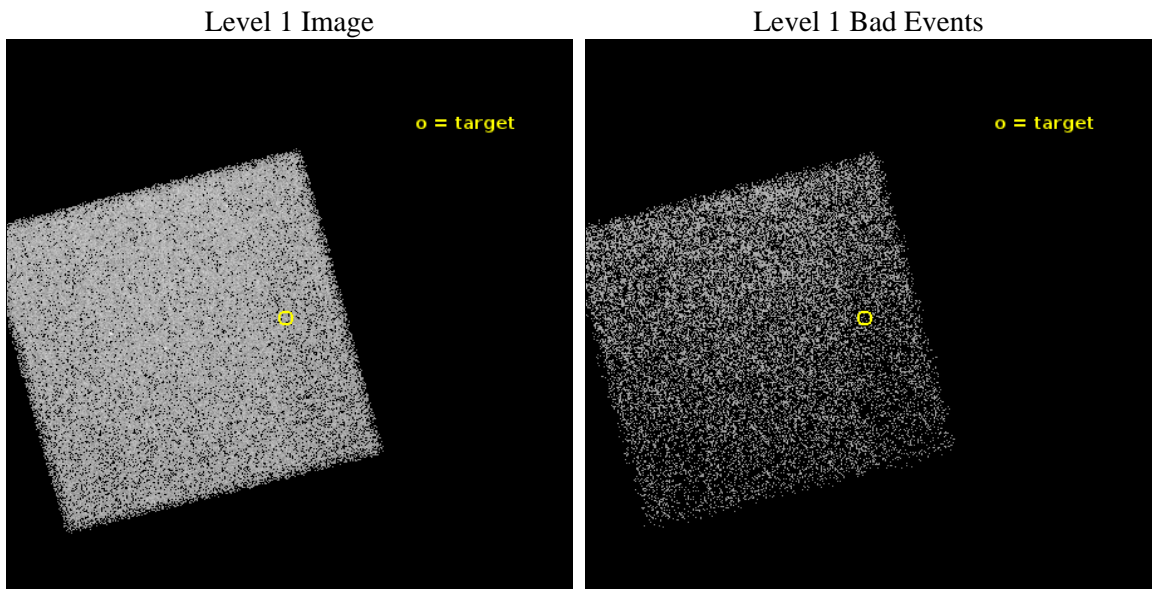
seq_num	201084	Sequence number
obs_id	18725	Observation id
title	X-ray irradiation and evaporation of a likely ocean planet	Proposa
observer	Dr Peter Wheatley	Principal investigator
object	HD97658	Source name
dtycycle	0	&#160
cycle	P	events from which exps? Prim/Second/Both
ra_targ	168.63765	Observer's specified target RA [deg]
dec_targ	25.710603	Observer's specified target Dec [deg]
ra_nom	168.63599232301	Nominal RA [deg]
dec_nom	25.708325287197	Nominal Dec [deg]
roll_nom	165.15735036891	Nominal Roll [deg]
revision	1	Processing version of data
ontime	20094.0	Sum of GTIs [s]
livetime	19822.823770815	Livetime [s]
ontime7	20094.0	Sum of GTIs [s]
l2events	69298	Number of level 2 events



## 2 OBI

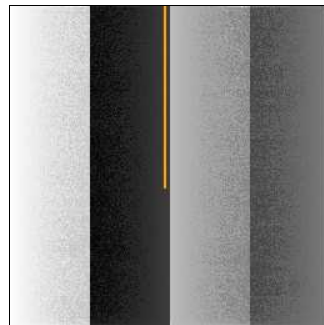
### 2.1 OBI

#### 2.1.1 Images



#### 2.1.2 Bias

Chip 7



### 2.1.3 Parameters

obi_num	1	Obi number	sched_exp_time	20000.000000	[s] Scheduled observation exposure time
ascdsver	10.4.3.1	Processing system revision	ontime	20094.0	Sum of GTIs [s]
caldbver	4.7.0	&#160	ontime7	20094.0	Sum of GTIs [s]
date	2016-03-09T03:44:46	Date and time of file creation	l1events	159923	Number of level 1 events
revision	1	Processing version of data			

### 2.1.4 Events

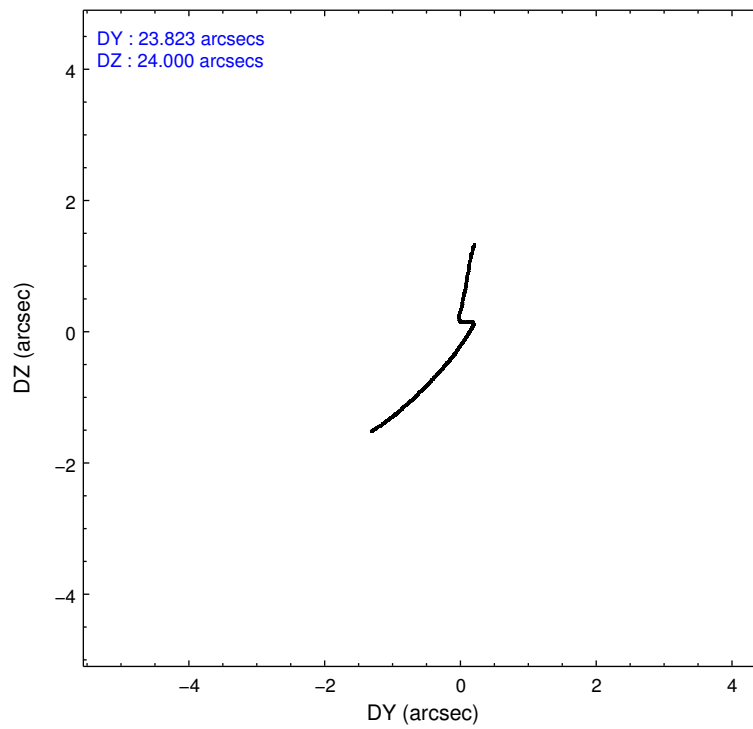
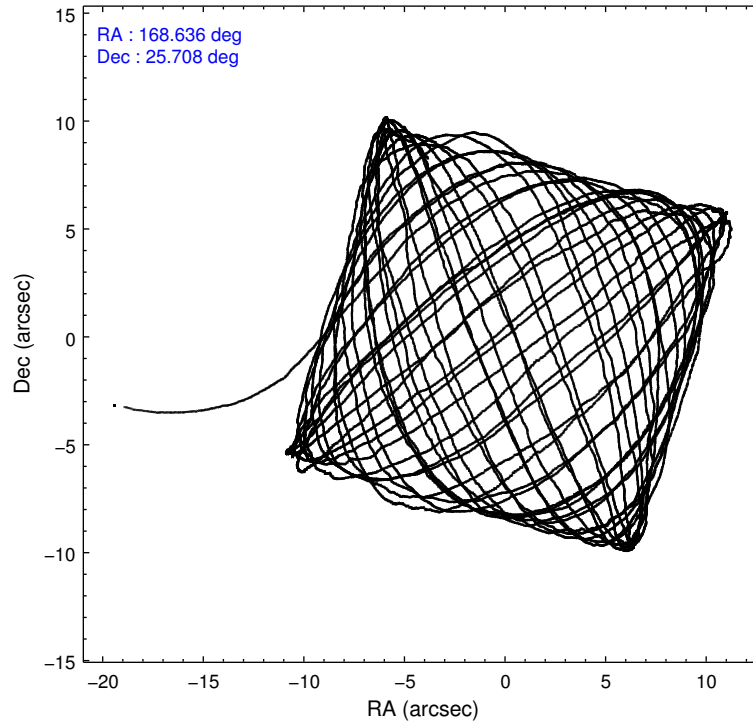
	<b>ccd 7</b>
level 1 events	159923
rejected events	88817
rejected %	<b>55%</b>

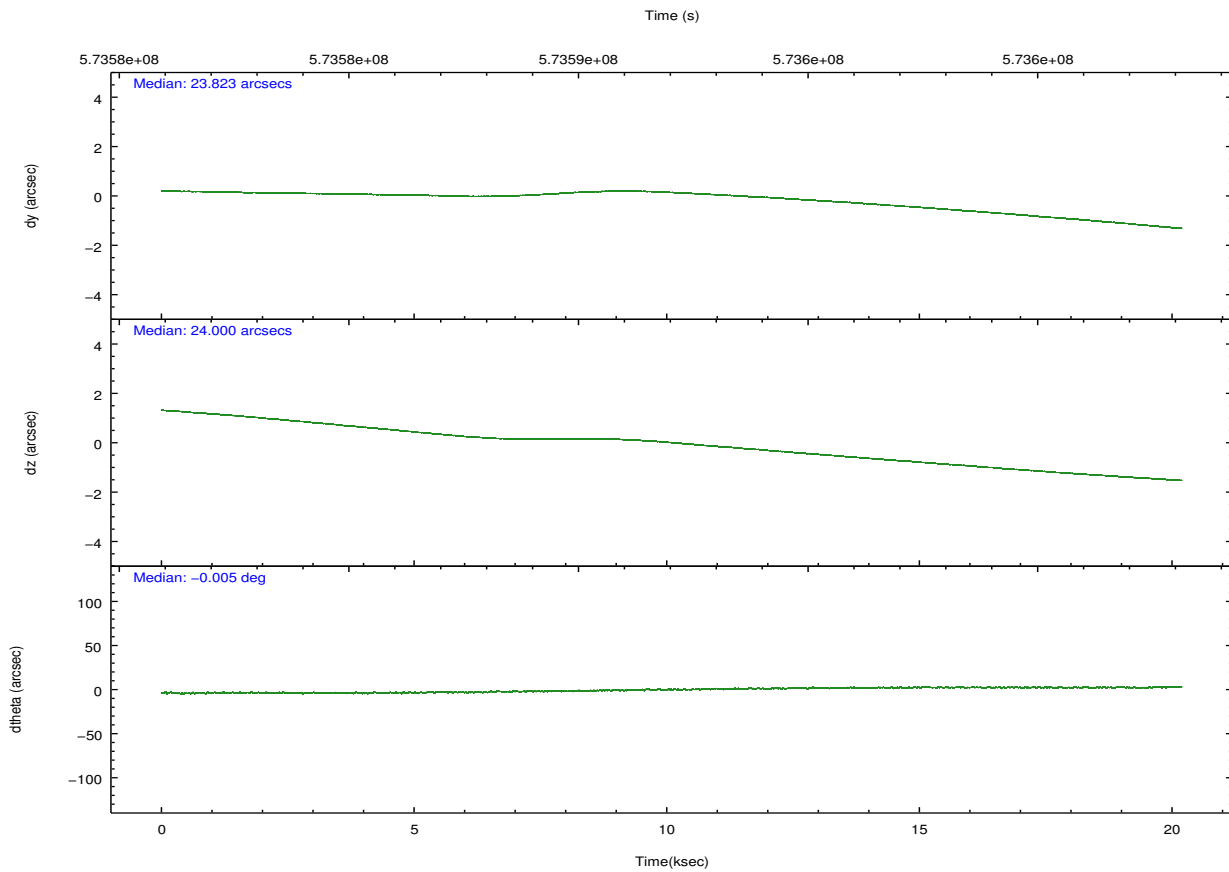
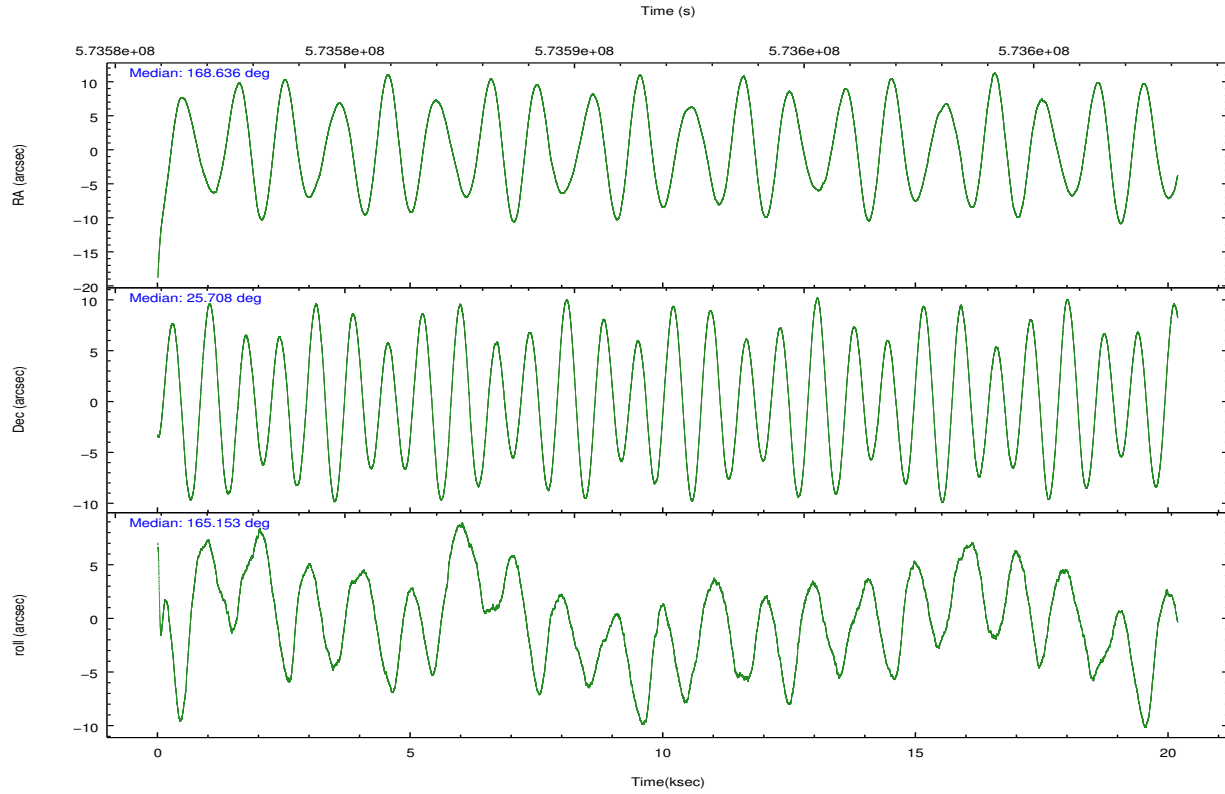
	<b>ccd 7</b>
grade 0 events	6167
	3%
grade 1 events	208
	0%
grade 2 events	14677
	9%
grade 3 events	6012
	3%
grade 4 events	6022
	3%
grade 5 events	16405
	10%
grade 6 events	38236
	23%
grade 7 events	72196
	45%

## 2.2 Compared Parameters

Parameter	Planned	Actual	Parameter	Planned	Actual
Instrument	ACIS	ACIS	Obspar format version number	7	7
Detector	ACIS-7	ACIS-7	Obspar file type	PREDICTED	ACTUAL
Grating	NONE	NONE	Obspar update status	NONE	UPDATED
Data mode	VFAINT	VFAINT	Number of optional ACIS chips dropped	0	0
Observation mode	POINTING	POINTING	On-chip summing requested	N	N
[deg] Pointing RA	168.665318	168.6359923230141	Subarray requested	NONE	NONE
[deg] Pointing Dec	25.715841	25.7083252871975	Alternating exposures requested	N	N
[deg] Pointing Roll	164.987995	165.1573503689087	[s] Primary exposure time	0.000000	3
[mm] SIM focus pos	-0.684267	-0.6828225247311905			
[mm] SIM defocus	0	0.001444936568705701			
[mm] SIM translation stage pos	-190.132523	-190.1400660498719			
[mm] SIM translation stage offset	0	0.00754346686406393			
[s] Observation start time (MET)	573582143.184000	573580863.5180399			
Observation start date	2016-03-05T16:21:15	2016-03-05T16:01:03			
[s] Observation end time (MET)	573602143.184000	573602728.30679			
Observation end date	2016-03-05T21:54:35	2016-03-05T22:05:28			
Read mode	TIMED	TIMED			

## 2.3 Aspect





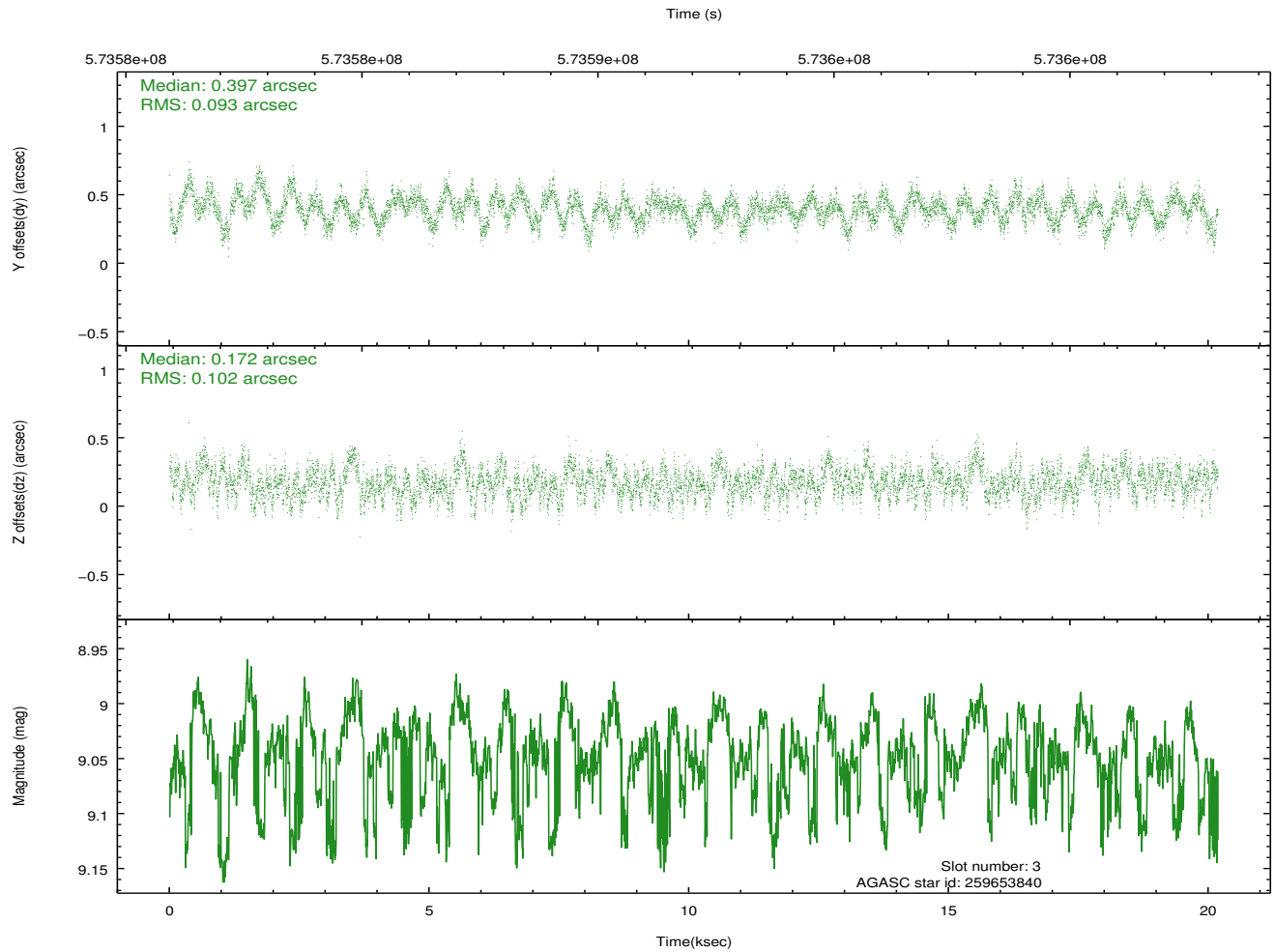
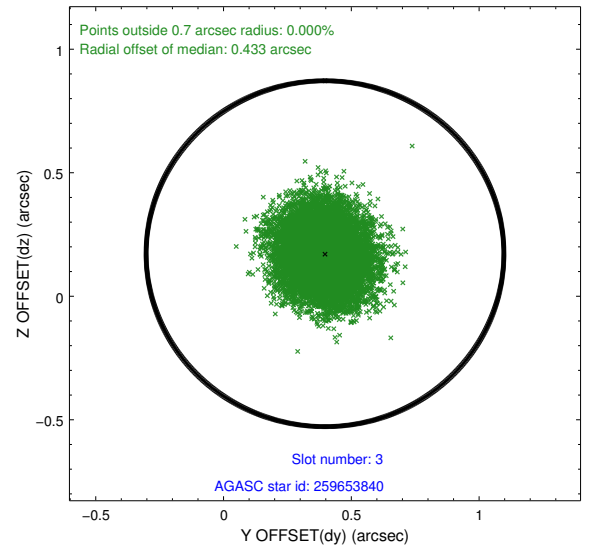
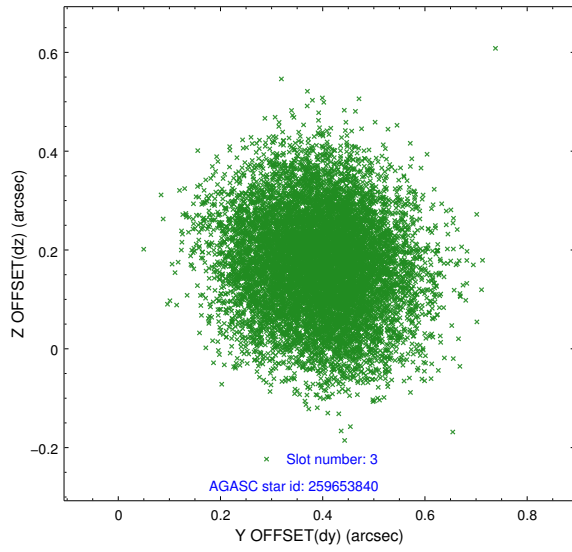
### Slot Statistics

slot	status	used	id	mag	n_pts	med_dy	med_dz	dr1	dr2	ra	dec	mean_y	mean_z
0	FID		ACIS-S-2	7.11	4923	-0.268	-0.156	0.061	0.078	0.000000	0.000000	-777.05	-1745.65
1	FID		ACIS-S-4	7.20	4923	0.607	0.169	0.024	0.045	0.000000	0.000000	2136.98	163.00
2	FID		ACIS-S-5	7.24	4923	-0.370	-0.007	0.053	0.068	0.000000	0.000000	-1829.80	156.64
3	GUIDE	used	259653840	9.05	9837	0.397	0.172	0.149	0.235	169.067302	26.217080	-785.09	-2079.86
4	GUIDE	used	259662976	7.71	9846	-0.154	-0.403	0.099	0.154	168.638176	25.710388	81.80	41.28
5	GUIDE	used	259919240	8.80	9837	0.124	0.035	0.128	0.207	168.772383	26.262082	175.80	-1988.29
6	GUIDE	used	259655608	8.63	9840	-0.399	-0.589	0.106	0.178	168.421819	25.104102	197.02	2332.86
7	GUIDE	used	259661224	8.55	9838	0.033	0.783	0.097	0.155	169.462195	25.952032	-2268.81	-1495.72

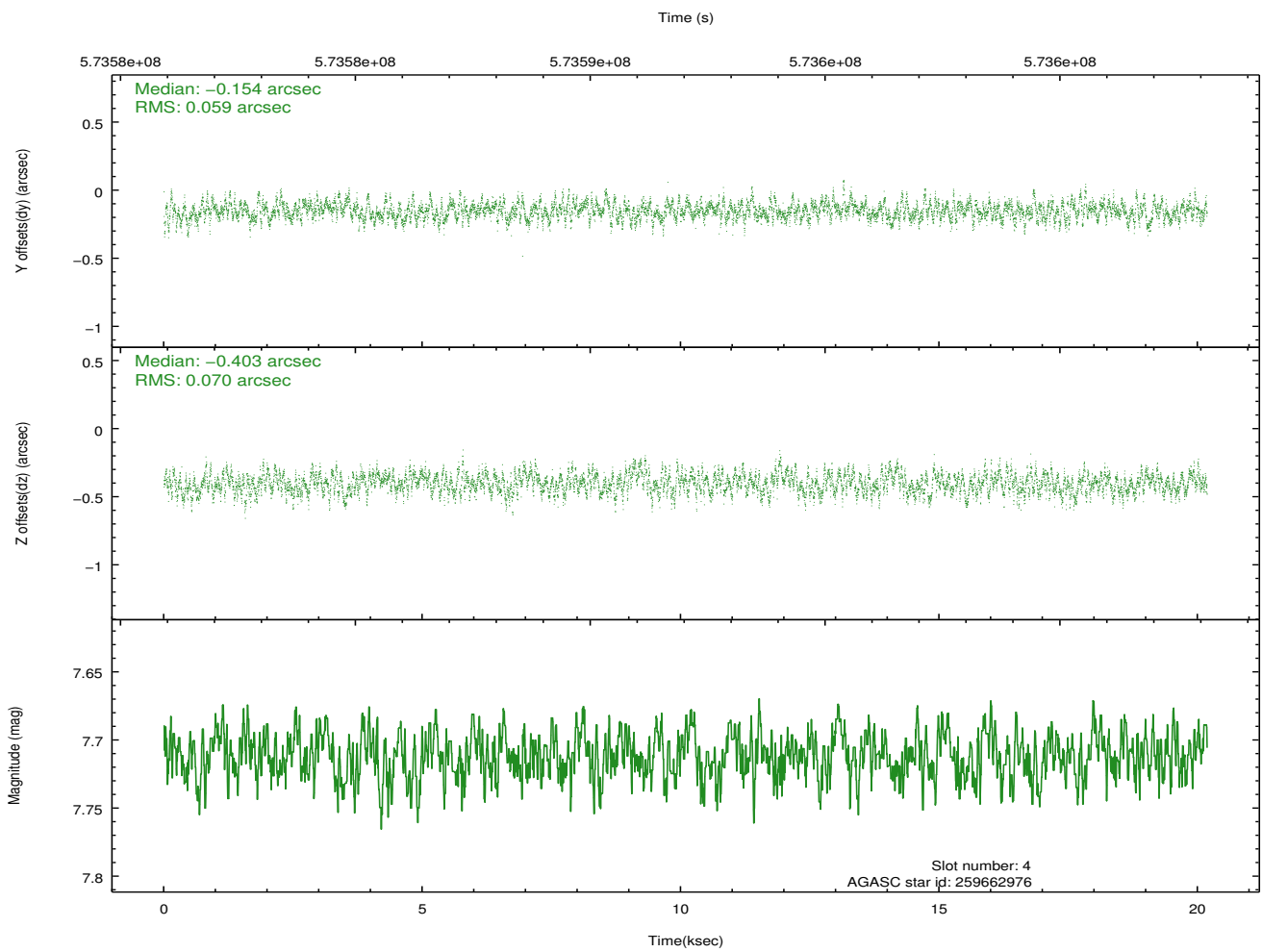
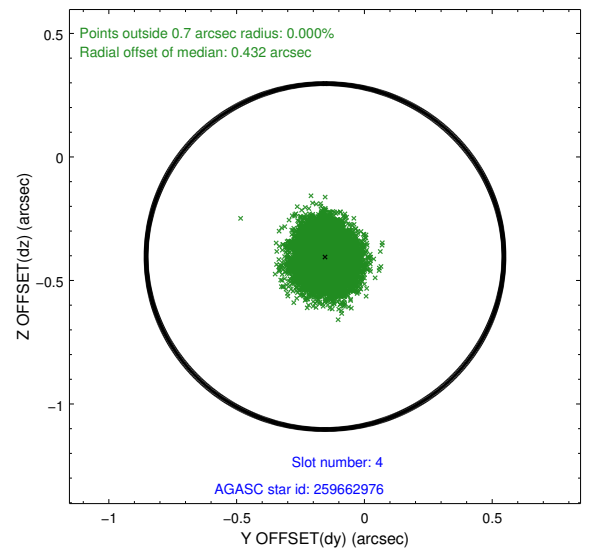
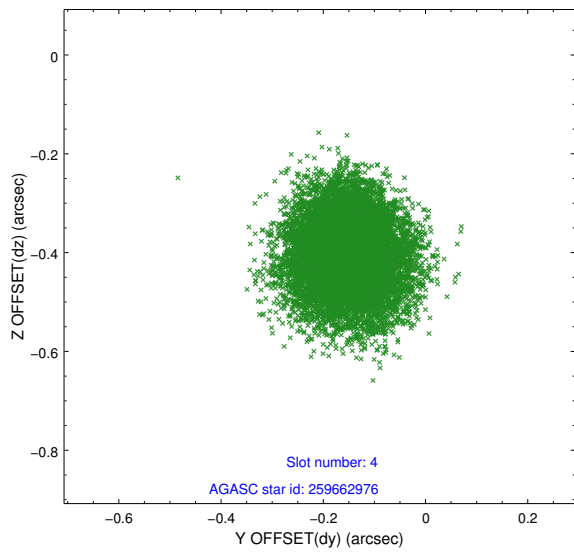
∞

## 2.4 Star Slots

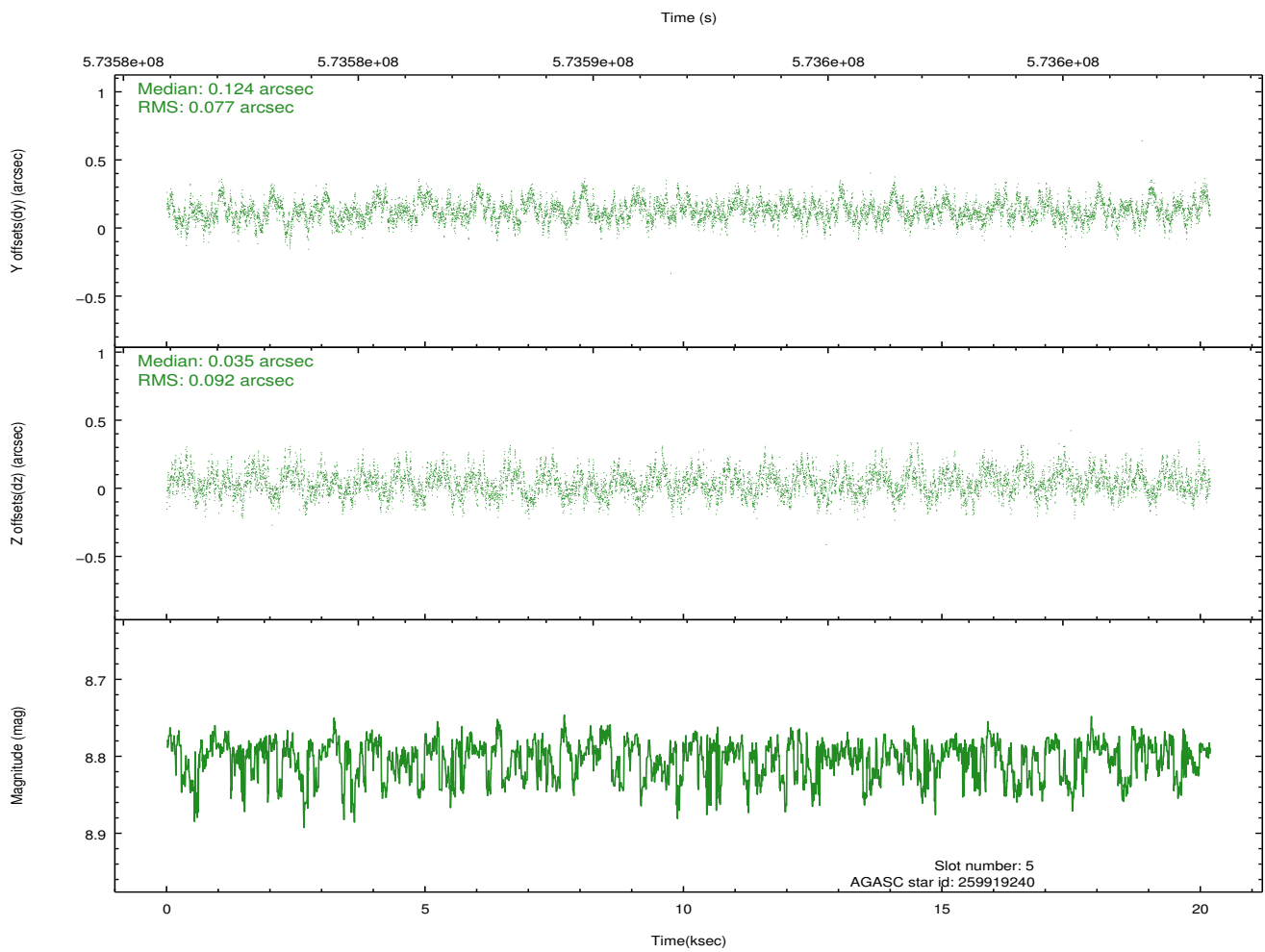
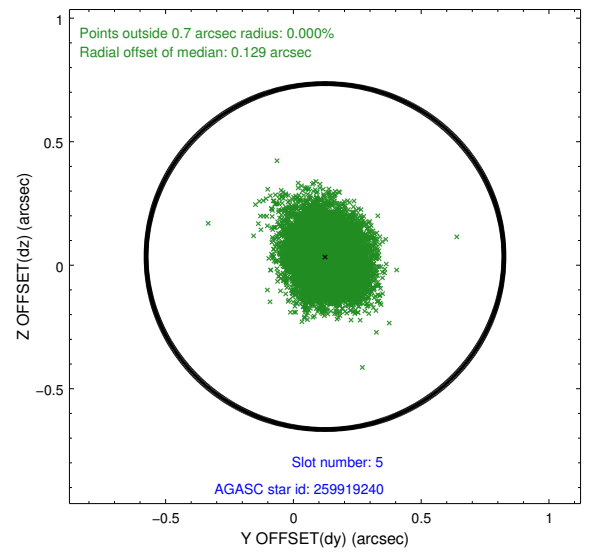
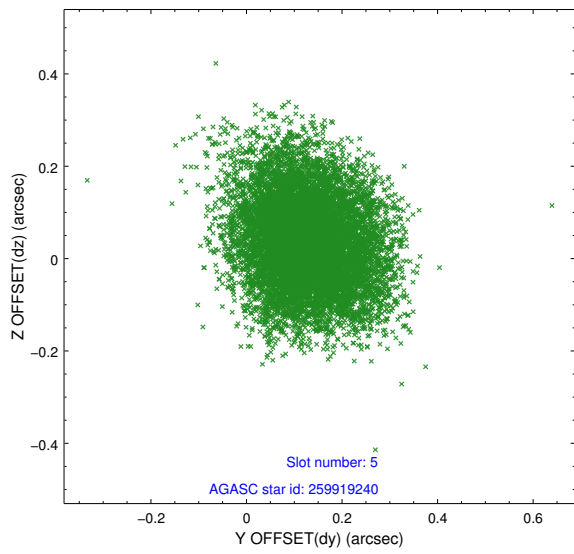
### 2.4.1 Slot 3



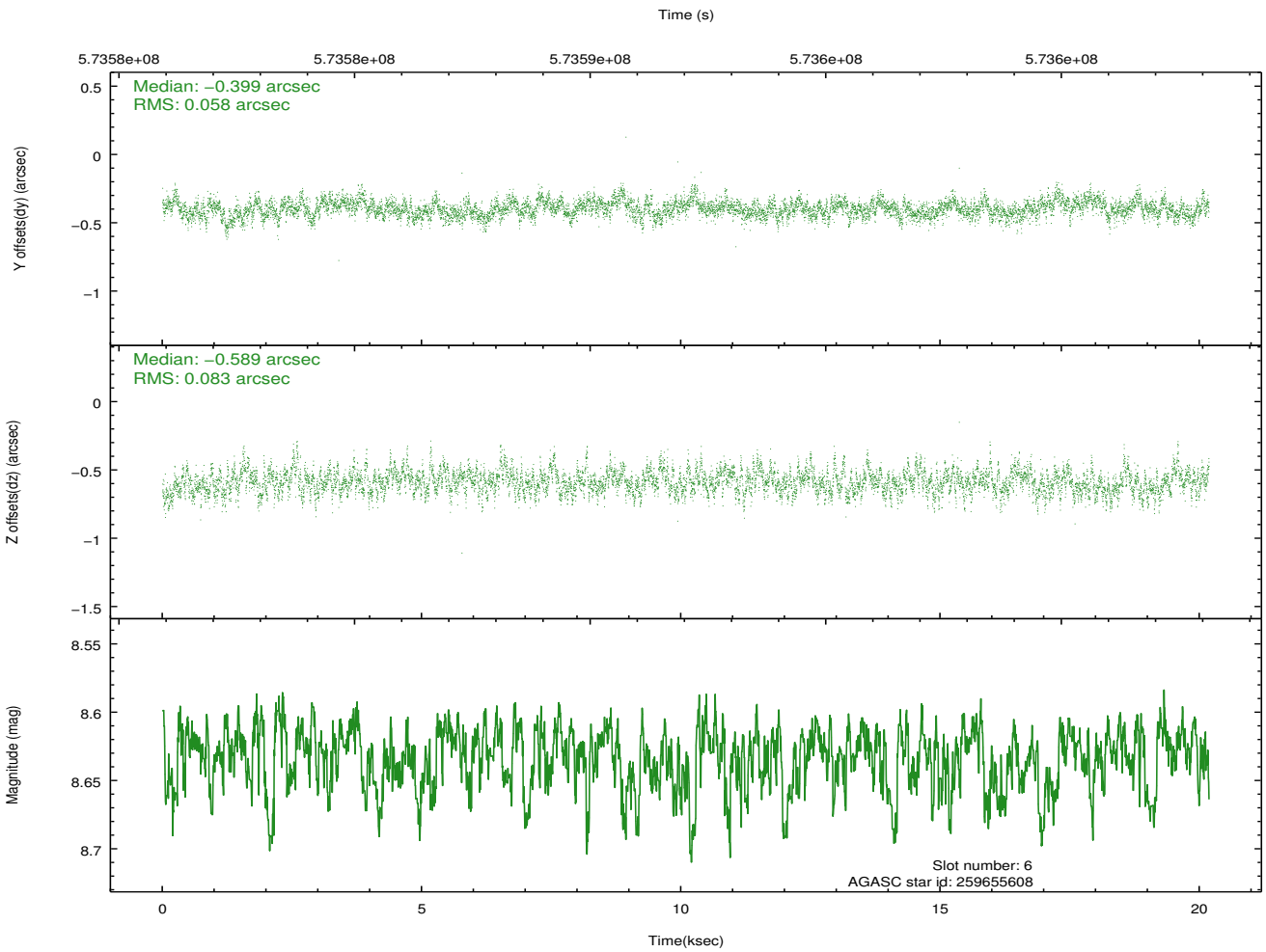
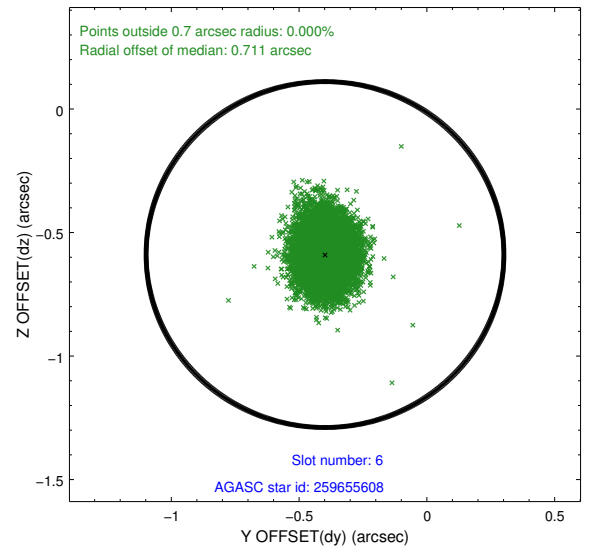
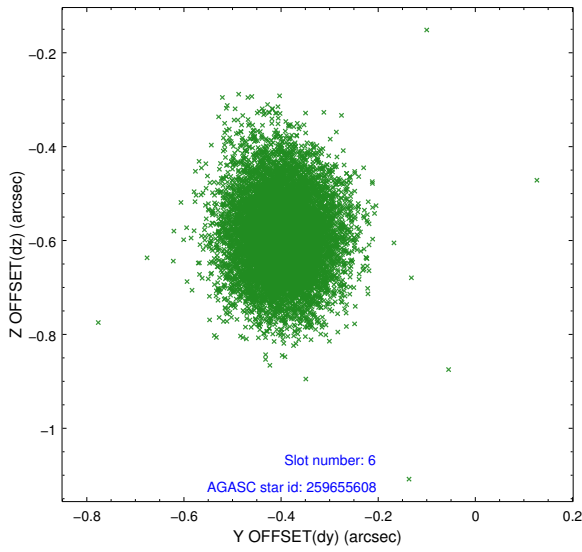
## 2.4.2 Slot 4



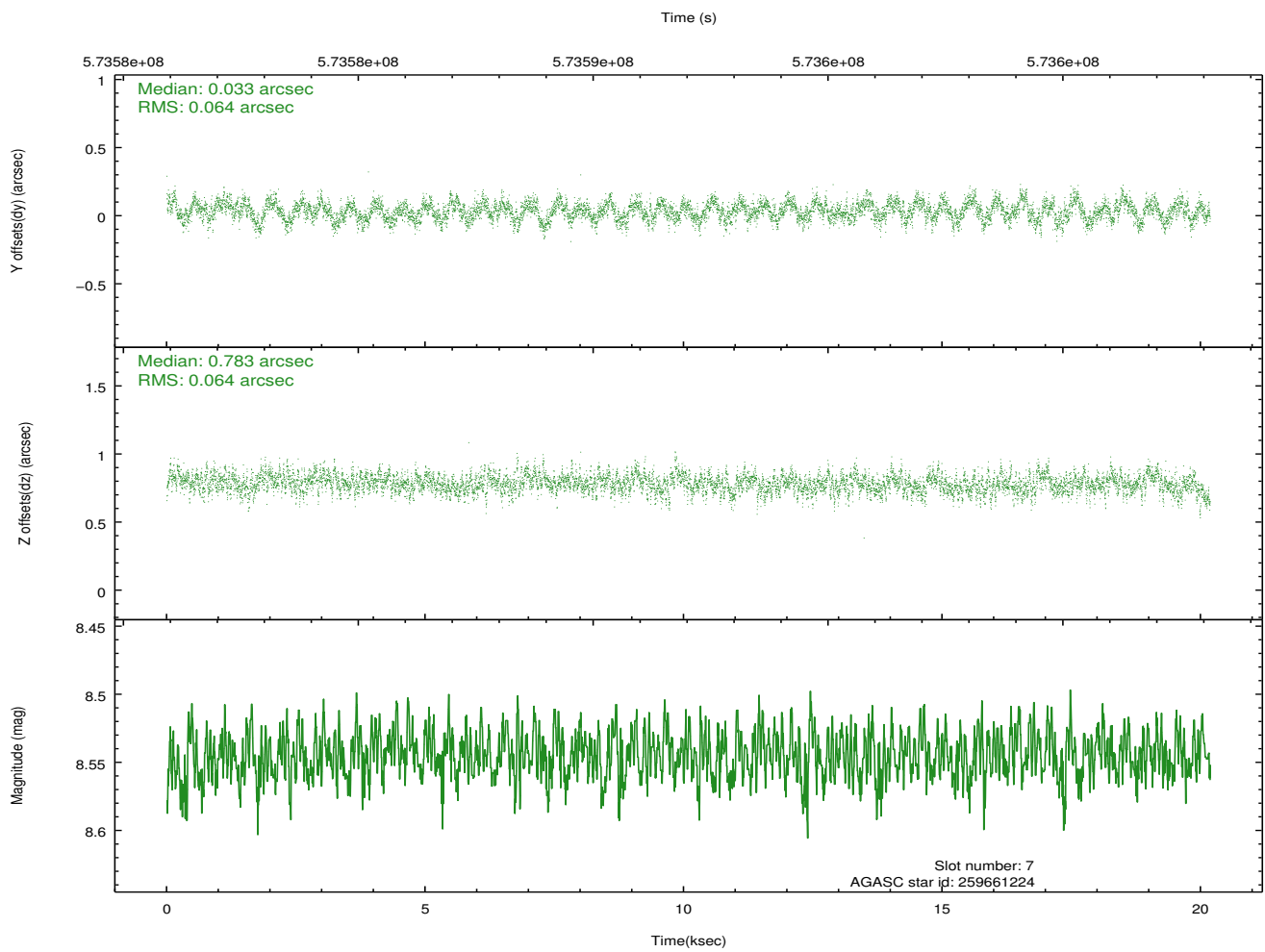
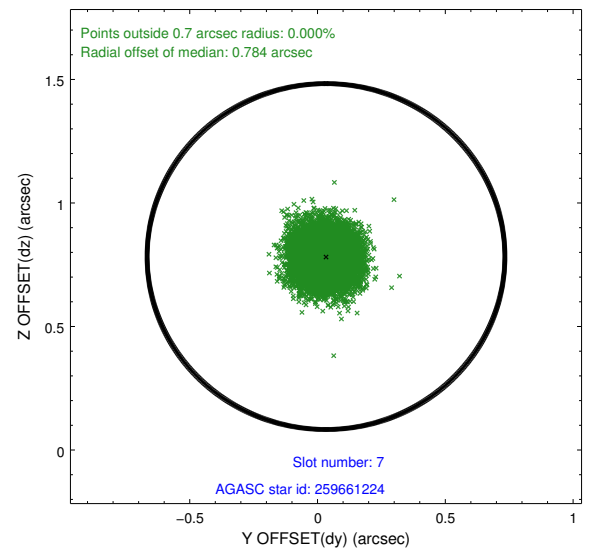
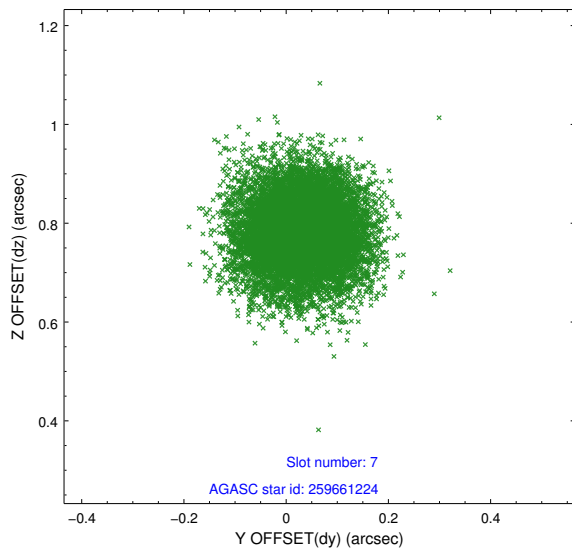
### 2.4.3 Slot 5



## 2.4.4 Slot 6

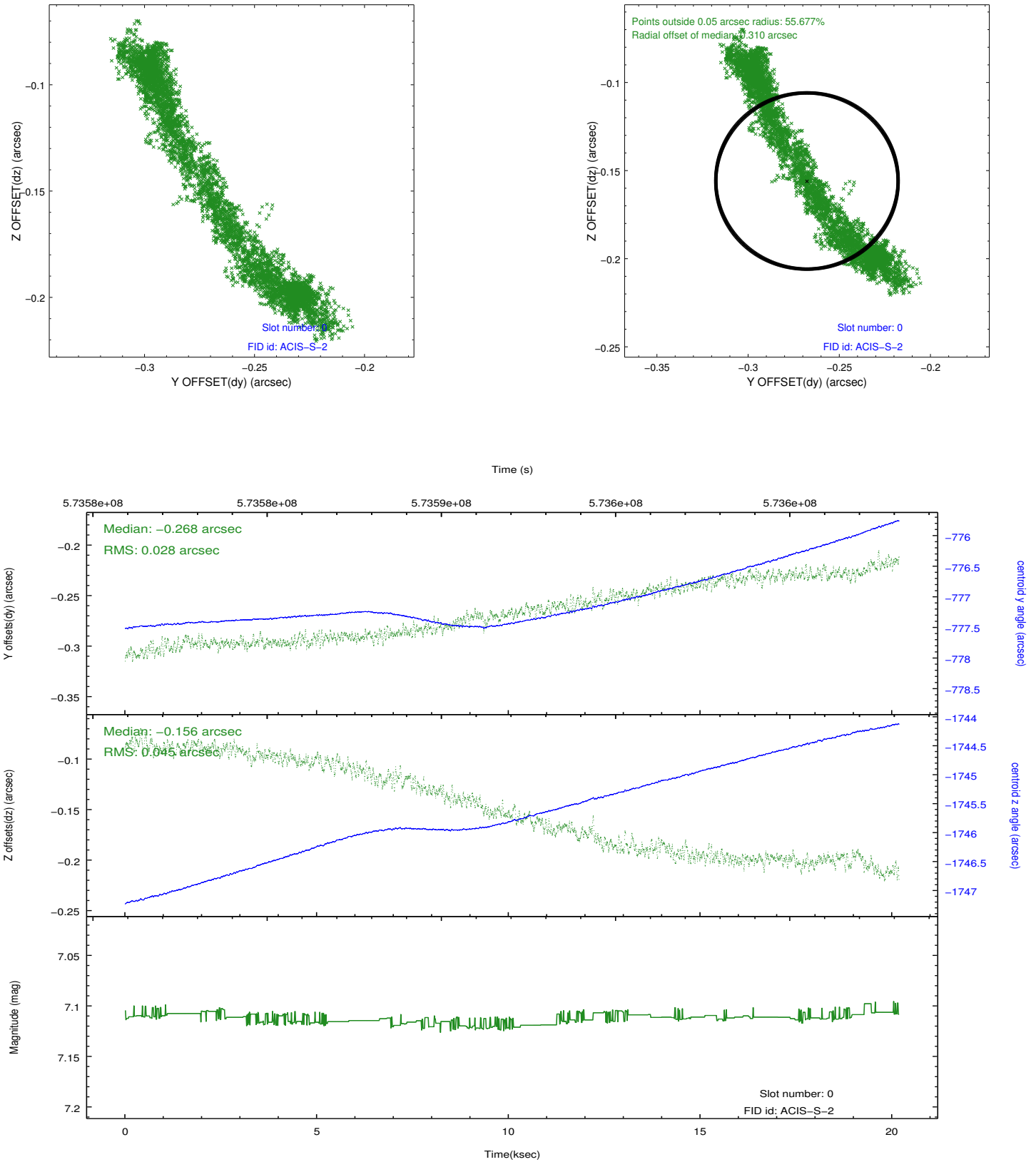


## 2.4.5 Slot 7

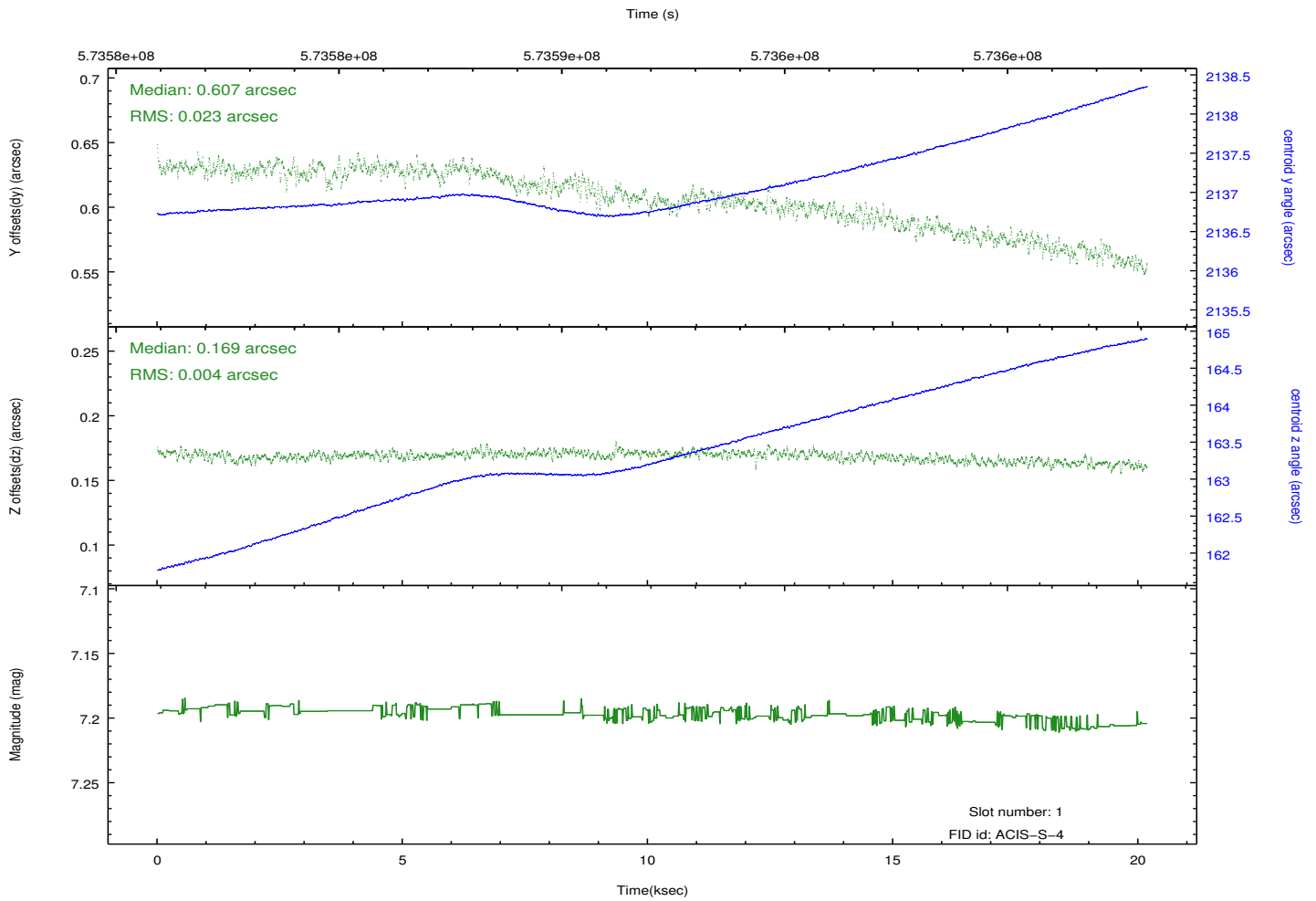
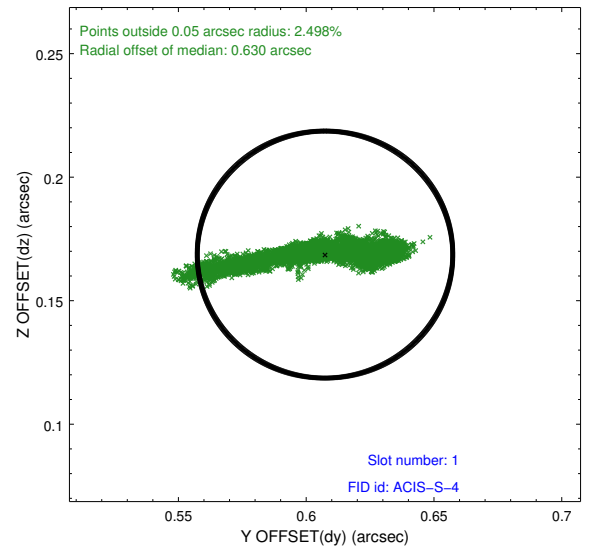
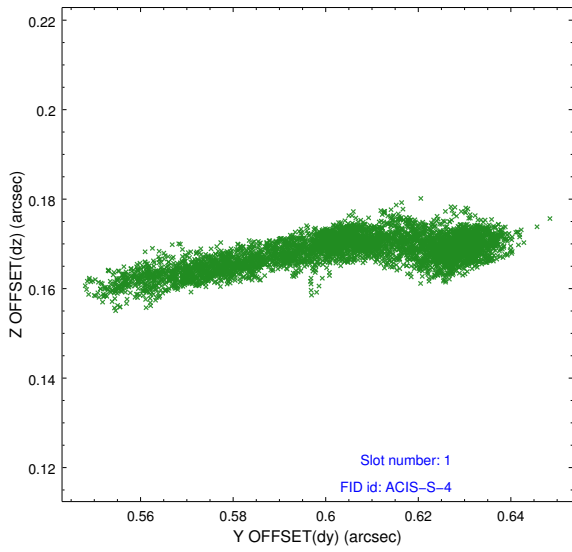


## 2.5 FID Slots

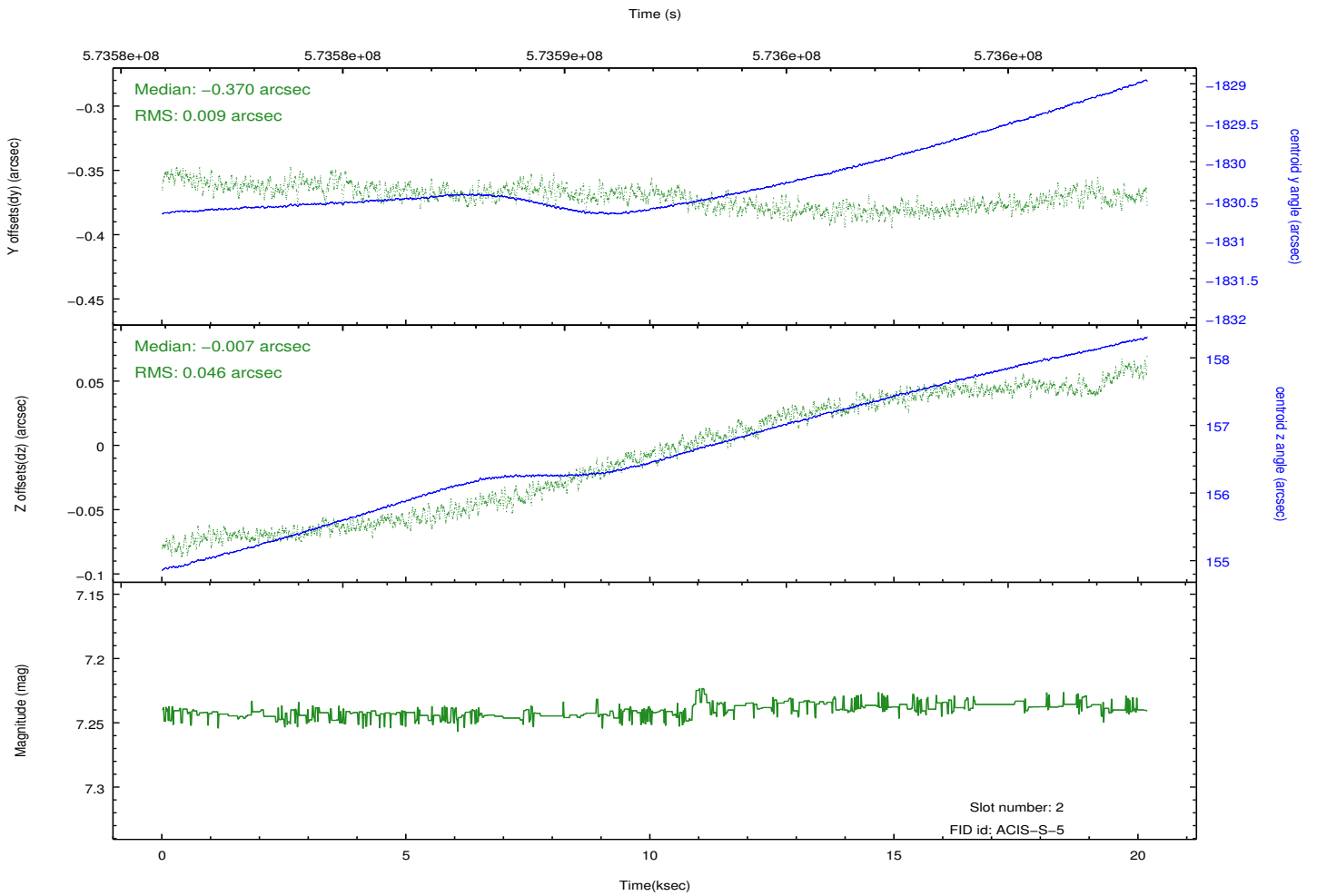
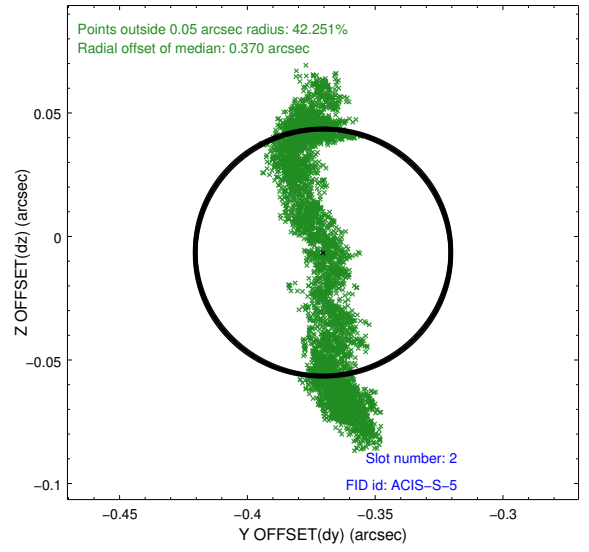
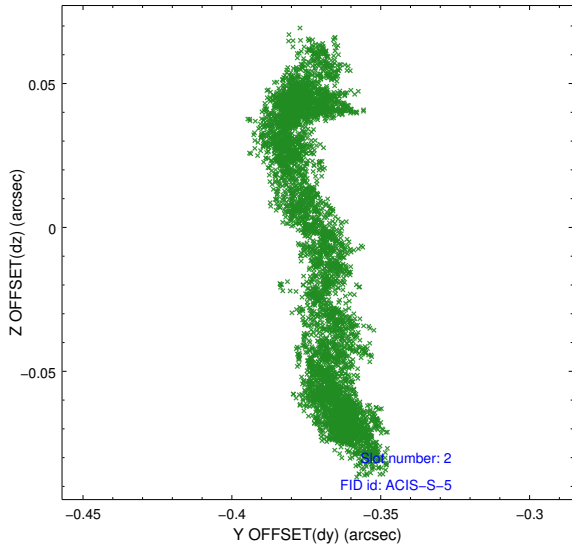
### 2.5.1 Slot 0



## 2.5.2 Slot 1



### 2.5.3 Slot 2



# A Summary

## A.1 Status

V&V Scientist	Beth Sundheim
V&V Date (YYYY-MM-DD)	2016.03.09
V&V Edition	1
V&V Disposition and Status	OK
V&V Charge Time	20.094

## A.2 Comments

Observation coordinated with HST.