

V&V Reference Report

L2 ASCDS Version : 8.4.5

Observation 1925 - L2 Version 3
Chandra X-Ray Center

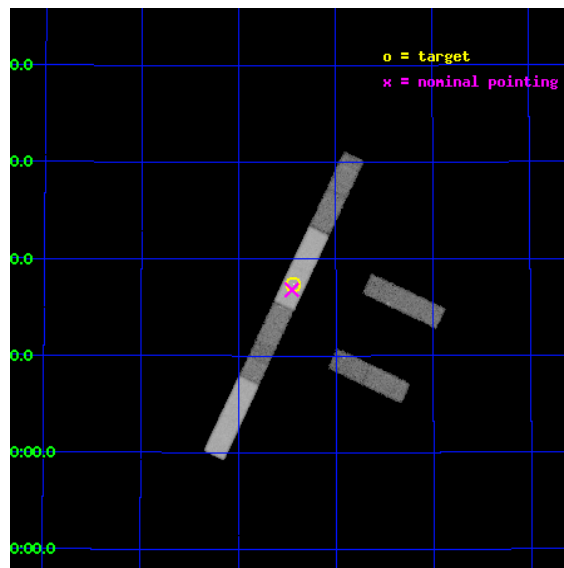
L2 Processing Date : Sep 4 2012

Contents

1	Front	2
2	OBI	3
2.1	OBI	3
2.1.1	Images	3
2.1.2	Bias	3
2.1.3	Parameters	4
2.1.4	Events	4
2.2	Compared Parameters	5
2.3	Aspect	6
2.4	Star Slots	9
2.4.1	Slot 3	9
2.4.2	Slot 4	10
2.4.3	Slot 5	11
2.4.4	Slot 6	12
2.4.5	Slot 7	13
2.5	FID Slots	14
2.5.1	Slot 0	14
2.5.2	Slot 1	15
2.5.3	Slot 2	16
A	Summary	17
A.1	Status	17
A.2	Comments	17

1 Front

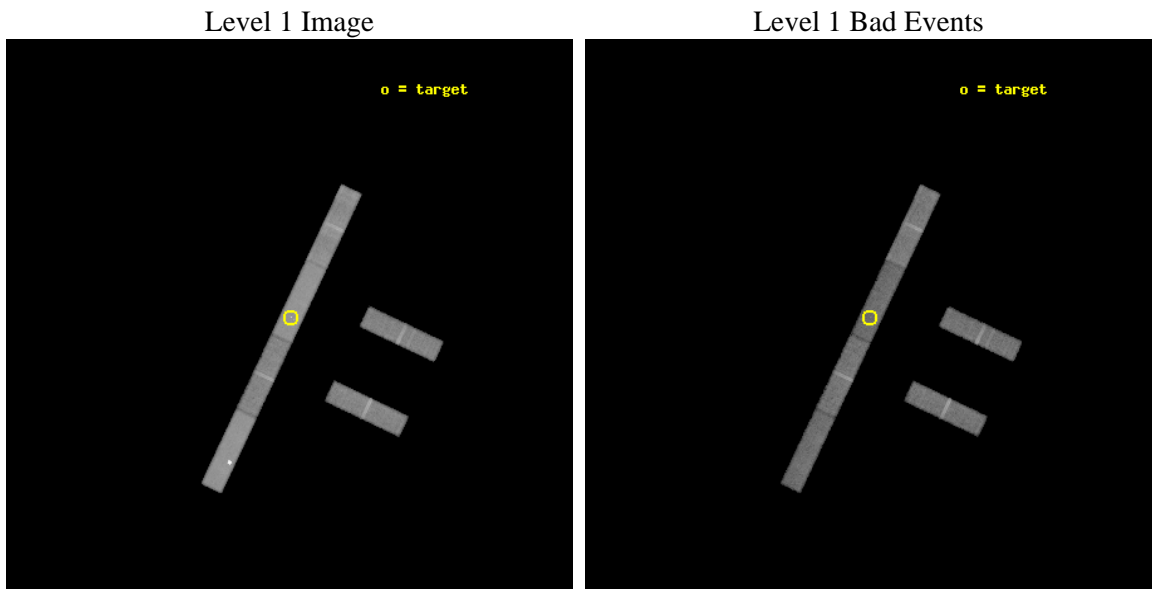
seq_num	400138	Sequence number
obs_id	1925	Observation id
title	4U 2129+47: FROM ADIOS TO ADAF OR ISOLATED NEUTRON STAR?	Proposal
observer	Dr. Michael Nowak	Principal investigator
object	4U2129+47	Source name
dtcycle	0	
cycle	P	events from which exps? Prim/Second/Both
ra_targ	322.859167	Observer's specified target RA [deg]
dec_targ	47.29	Observer's specified target Dec [deg]
ra_nom	322.86292231395	Nominal RA [deg]
dec_nom	47.280494848886	Nominal Dec [deg]
roll_nom	295.38538791737	Nominal Roll [deg]
revision	3	Processing version of data
ontime	36616.758781508	Sum of GTIs [s]
livetime	35299.756940737	Livetime [s]
ontime2	36616.758781508	Sum of GTIs [s]
ontime3	36616.758781508	Sum of GTIs [s]
ontime5	36616.758781508	Sum of GTIs [s]
ontime6	36617.899801582	Sum of GTIs [s]
ontime7	36616.758781508	Sum of GTIs [s]
ontime8	36616.758811429	Sum of GTIs [s]
l2events	177271	Number of level 2 events



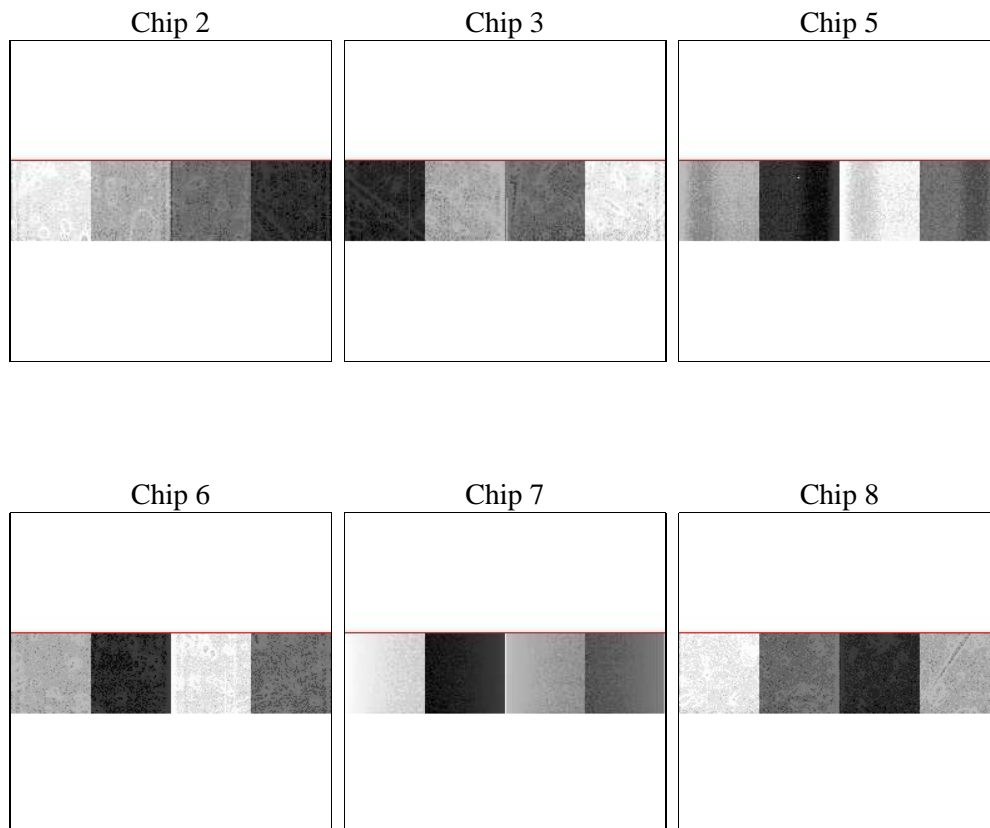
2 OBI

2.1 OBI

2.1.1 Images



2.1.2 Bias



2.1.3 Parameters

obi_num	2	Obi number	sched_exp_time	36475.644000	[s] Scheduled observation exposure time
ascdsver	8.4.5	Processing system revision	ontime	36616.758781508	Sum of GTIs [s]
caldbver	4.5.1.1	 	ontime2	36616.758781508	Sum of GTIs [s]
date	2012-09-04T04:55:59	Date and time of file creation	ontime3	36616.758781508	Sum of GTIs [s]
revision	3	Processing version of data	ontime5	36616.758781508	Sum of GTIs [s]
			ontime6	36617.899801582	Sum of GTIs [s]
			ontime7	36616.758781508	Sum of GTIs [s]
			ontime8	36616.758811429	Sum of GTIs [s]
			l1events	552422	Number of level 1 events

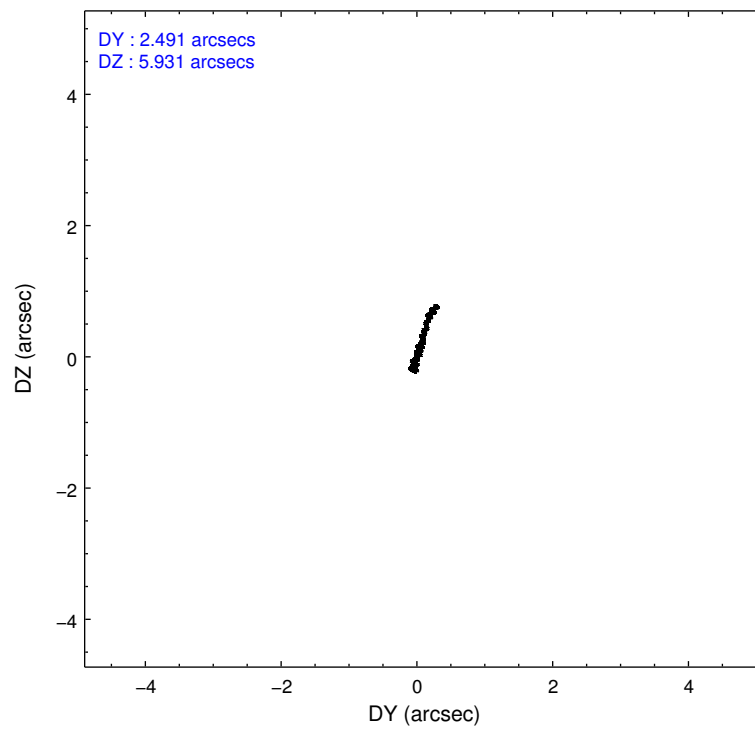
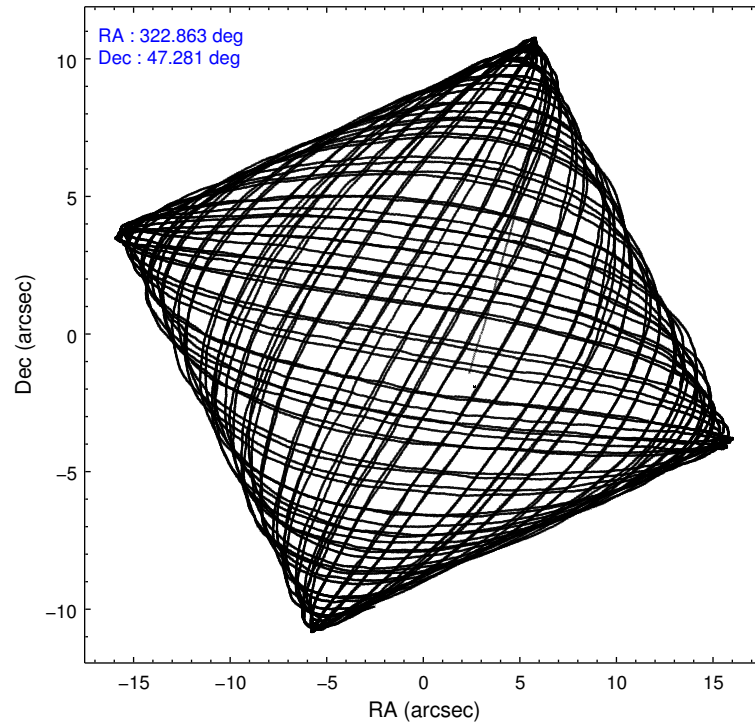
2.1.4 Events

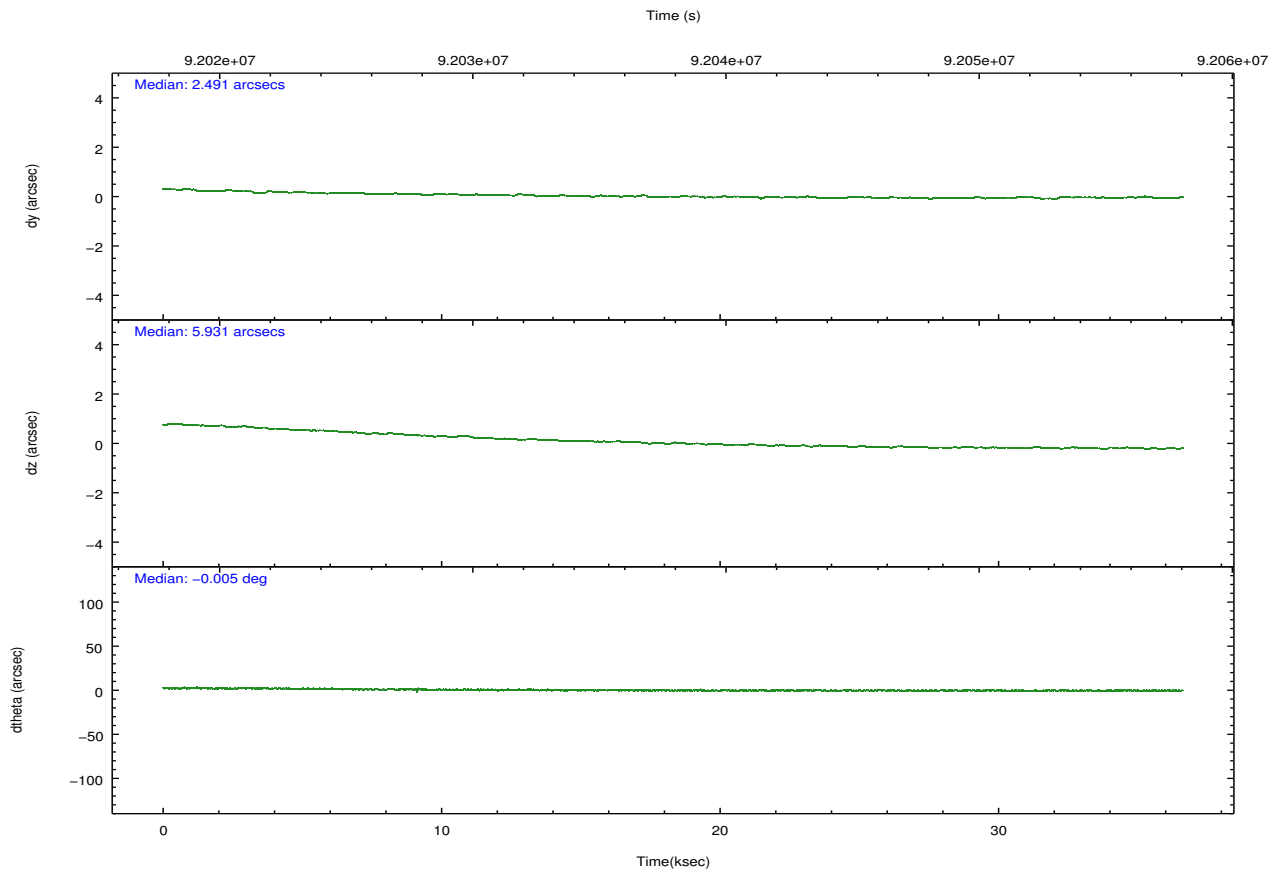
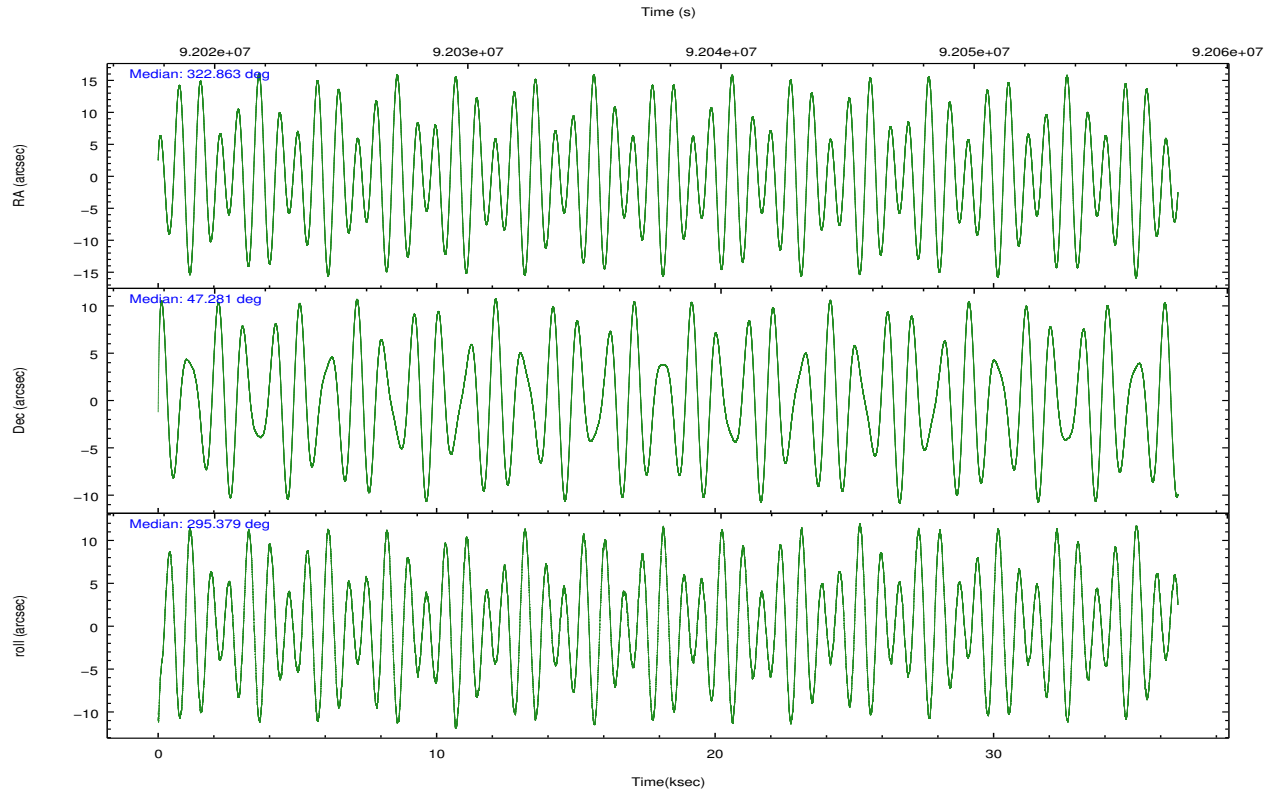
	ccd 2	ccd 3	ccd 5	ccd 6	ccd 7	ccd 8		ccd 2	ccd 3	ccd 5	ccd 6	ccd 7	ccd 8
level 1 events	71108	65535	138235	70322	109624	97598	grade 0 events	5993	5583	36711	7491	8422	11371
rejected events	59582	54768	43311	56652	40252	68819		8%	8%	26%	10%	7%	11%
rejected %	83%	83%	31%	80%	36%	70%	grade 1 events	21	21	114	18	93	41
								0%	0%	0%	0%	0%	0%
							grade 2 events	2107	1949	19686	2435	13448	4990
								2%	2%	14%	3%	12%	5%
							grade 3 events	1038	951	4786	1171	6497	3230
								1%	1%	3%	1%	5%	3%
							grade 4 events	1106	1035	4720	1098	6543	3057
								1%	1%	3%	1%	5%	3%
							grade 5 events	1859	1849	6559	2074	6681	2815
								2%	2%	4%	2%	6%	2%
							grade 6 events	1413	1371	30100	1604	35060	6517
								1%	2%	21%	2%	31%	6%
							grade 7 events	57571	52776	35559	54431	32880	65577
								80%	80%	25%	77%	29%	67%

2.2 Compared Parameters

Parameter	Planned	Actual	Parameter	Planned	Actual
Instrument	ACIS	ACIS	Obspar format version number	7	7
Detector	ACIS-235678	ACIS-235678	Obspar file type	PREDICTED	ACTUAL
Grating	NONE	NONE	Obspar update status	NONE	UPDATED
Data mode	FAINT	FAINT	Number of optional ACIS chips dropped	0	0
Observation mode	POINTING	POINTING	On-chip summing requested	N	N
[deg] Pointing RA	322.829582	322.8629223139465	Subarray requested	CUSTOM	1/4
[deg] Pointing Dec	47.295828	47.28049484888554	Subarray start row	385	385
[deg] Pointing Roll	295.253259	295.3853879173666	Subarray row count	256	256
[mm] SIM focus pos	-0.684267	-0.6828225247311905	Alternating exposures requested	N	N
[mm] SIM defocus	0	0.001444936568705701	[s] Primary exposure time	0.000000	1.1
[mm] SIM translation stage pos	-190.132523	-190.1400660498719			
[mm] SIM translation stage offset	0	0.00754346686406393			
[s] Observation start time (MET)	92019744.184000	92018685.78645401			
Observation start date	2000-12-01T01:01:20	2000-12-01T00:44:45			
[s] Observation end time (MET)	92056220.184000	92056534.42539901			
Observation end date	2000-12-01T11:09:16	2000-12-01T11:15:34			
Read mode	TIMED	TIMED			

2.3 Aspect



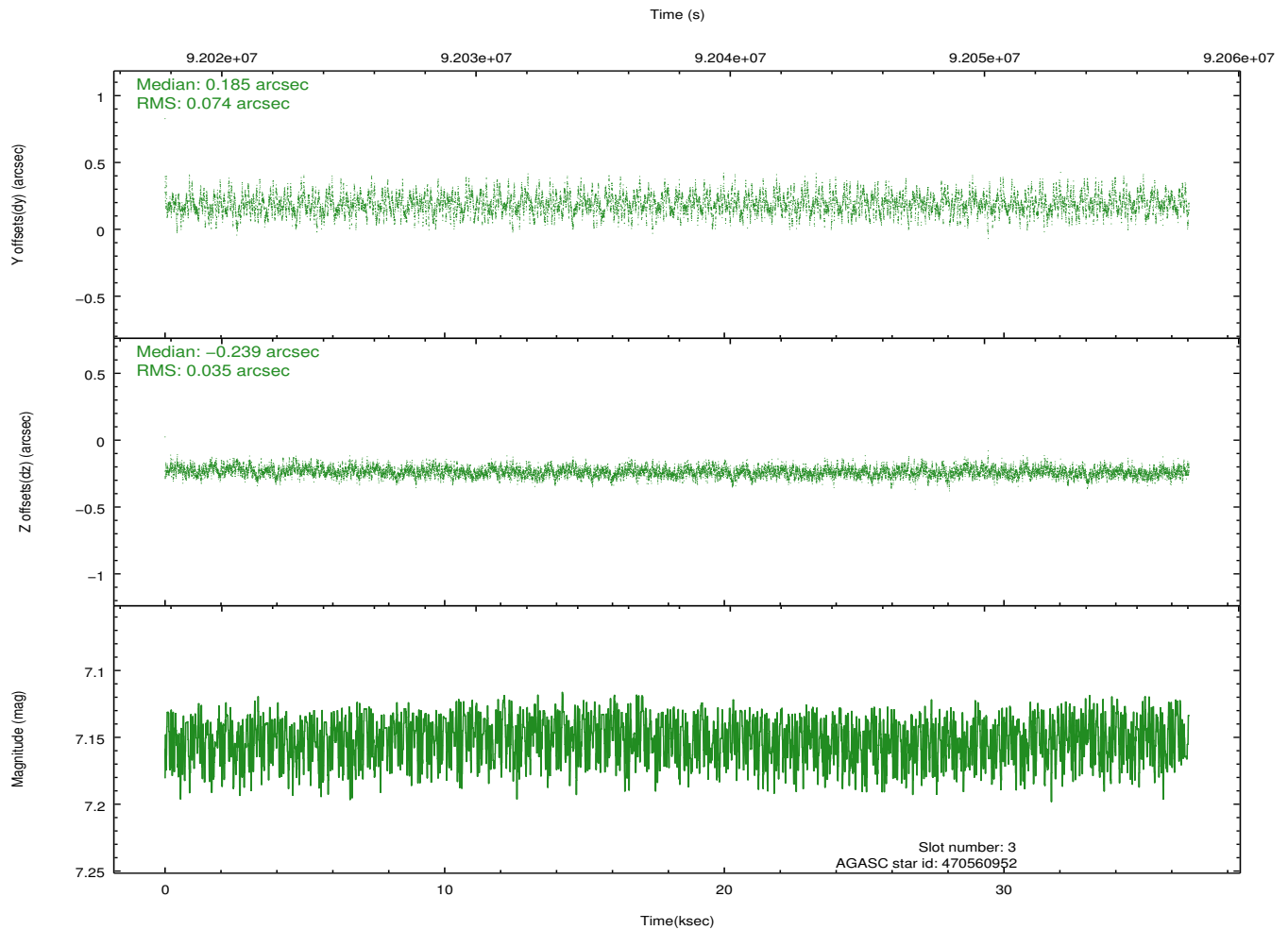
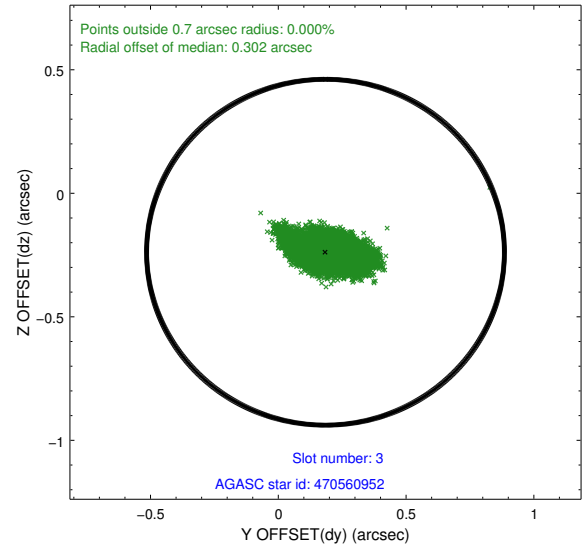
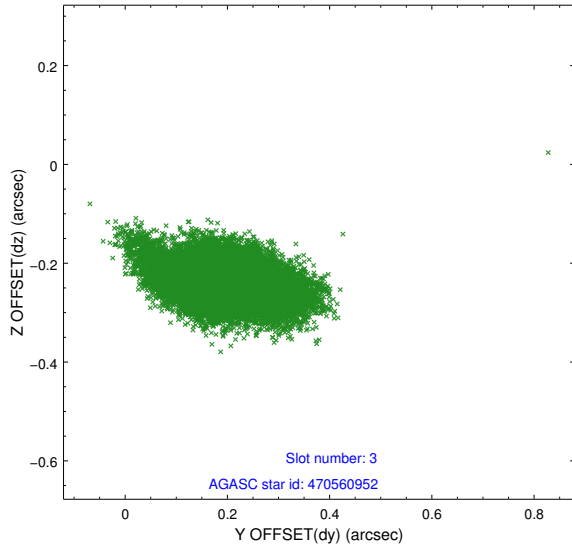


Slot Statistics

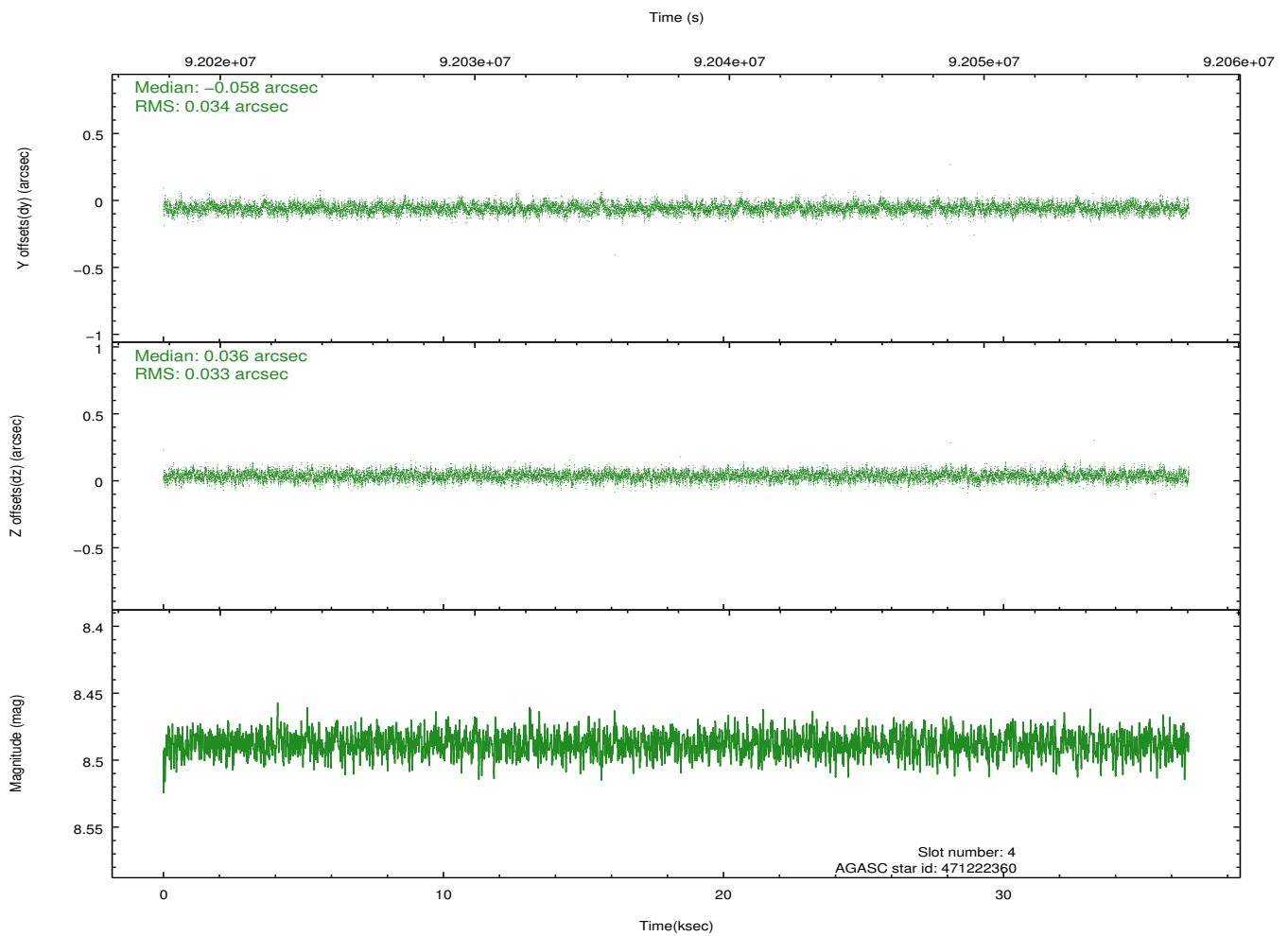
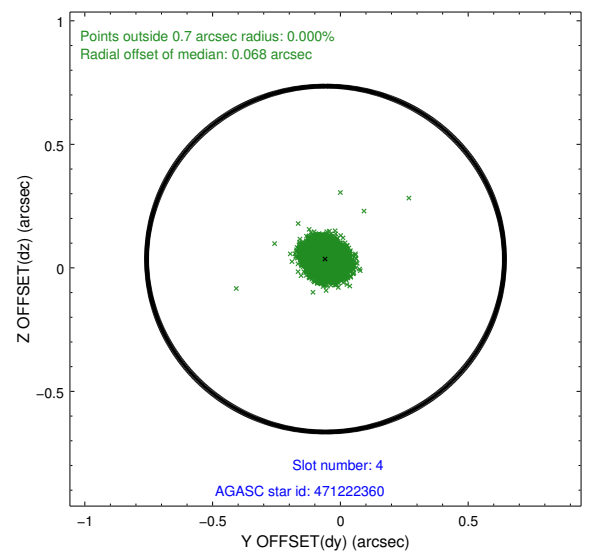
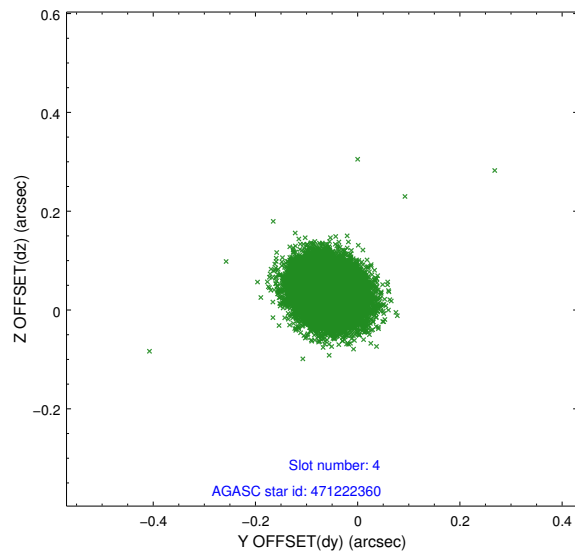
slot	status	id	mag	n_pts	med_dy	med_dz	dr1	dr2	ra	dec	mean_y	mean_z
0	FID	ACIS-S-2	7.11	8931	-0.038	0.000	0.009	0.016	0.000000	0.000000	-755.17	-1727.19
1	FID	ACIS-S-4	7.21	8928	-0.004	0.018	0.007	0.013	0.000000	0.000000	2158.10	181.31
2	FID	ACIS-S-5	7.24	8931	0.010	-0.009	0.008	0.014	0.000000	0.000000	-1807.95	174.94
3	GUIDE	470560952	7.15	17862	0.185	-0.239	0.083	0.152	322.403033	46.426452	2377.71	-2290.72
4	GUIDE	471222360	8.49	17862	-0.058	0.036	0.050	0.080	323.722466	46.988042	1926.84	1516.58
5	GUIDE	471086104	8.65	17853	-0.031	0.114	0.075	0.120	323.249901	47.513417	-274.34	1260.50
6	GUIDE	471073240	8.68	17863	-0.067	-0.024	0.063	0.102	322.948313	47.442940	-355.32	488.15
7	GUIDE	471091056	8.85	17859	-0.032	0.113	0.085	0.140	323.297085	47.790378	-1130.52	1784.34

2.4 Star Slots

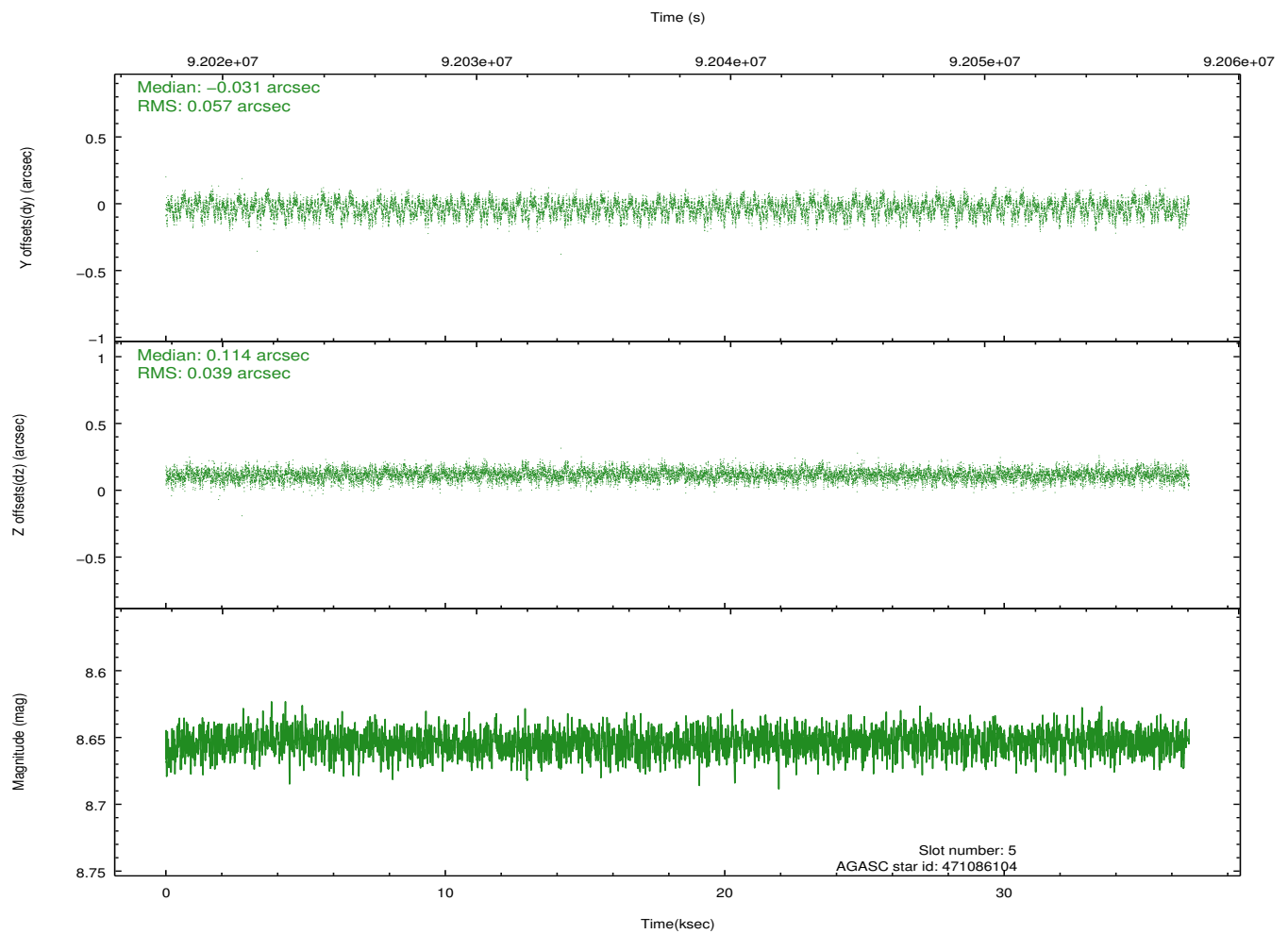
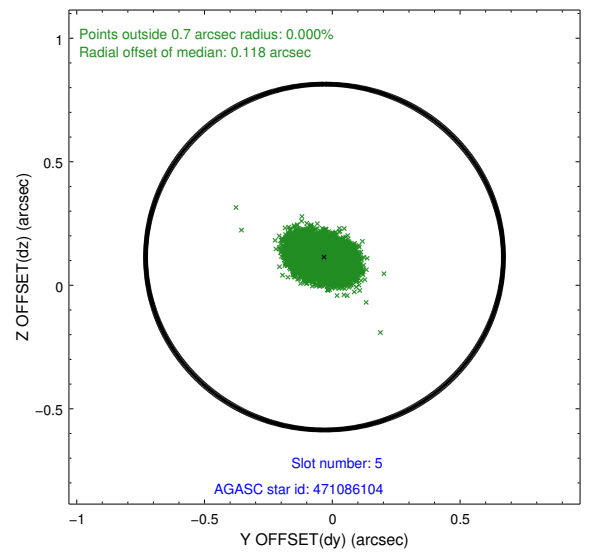
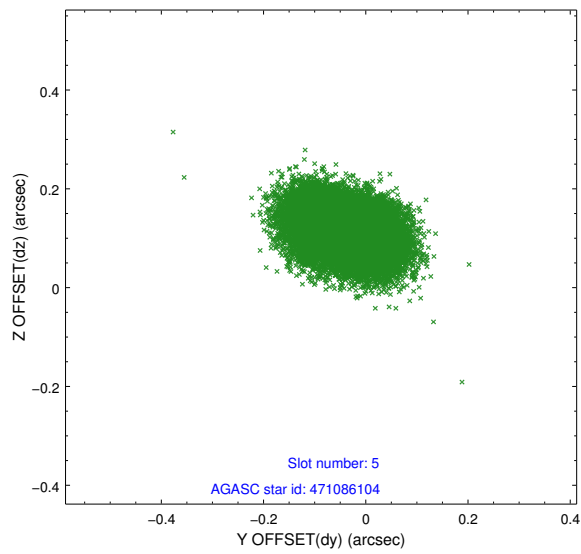
2.4.1 Slot 3



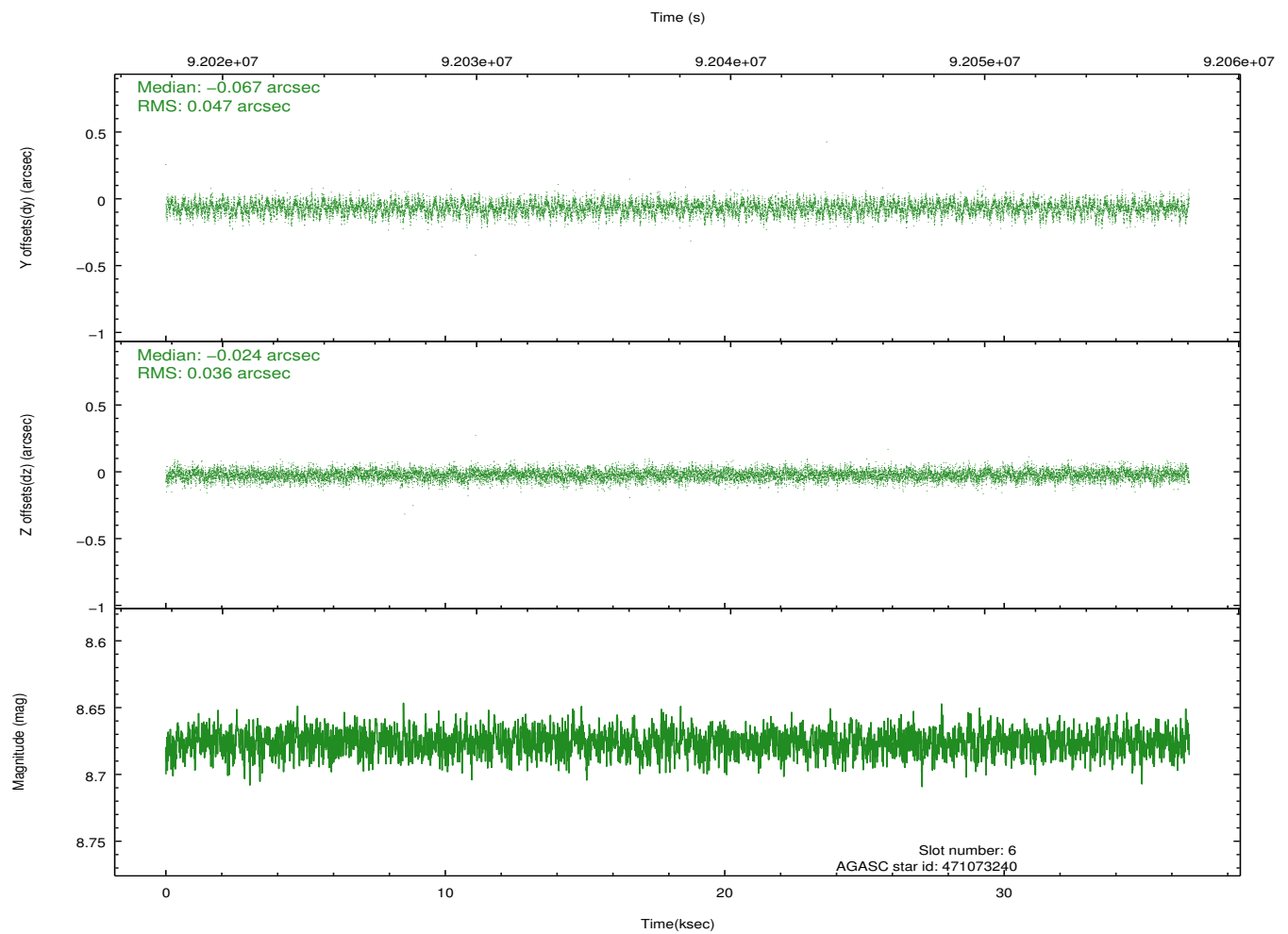
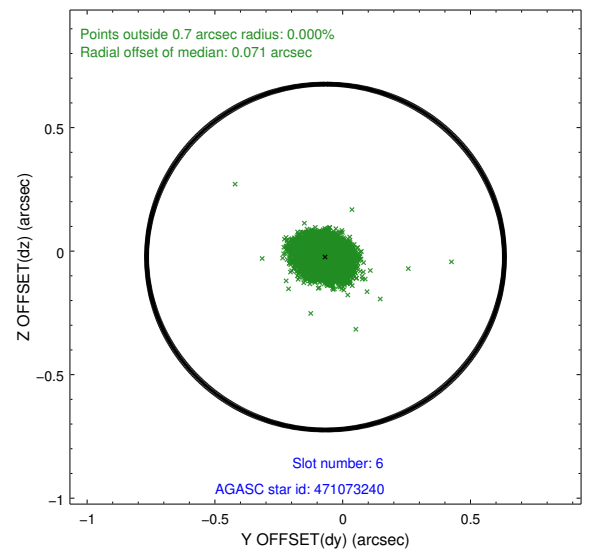
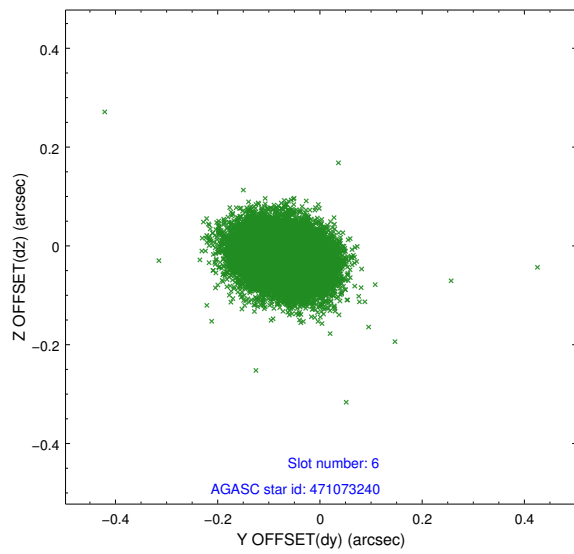
2.4.2 Slot 4



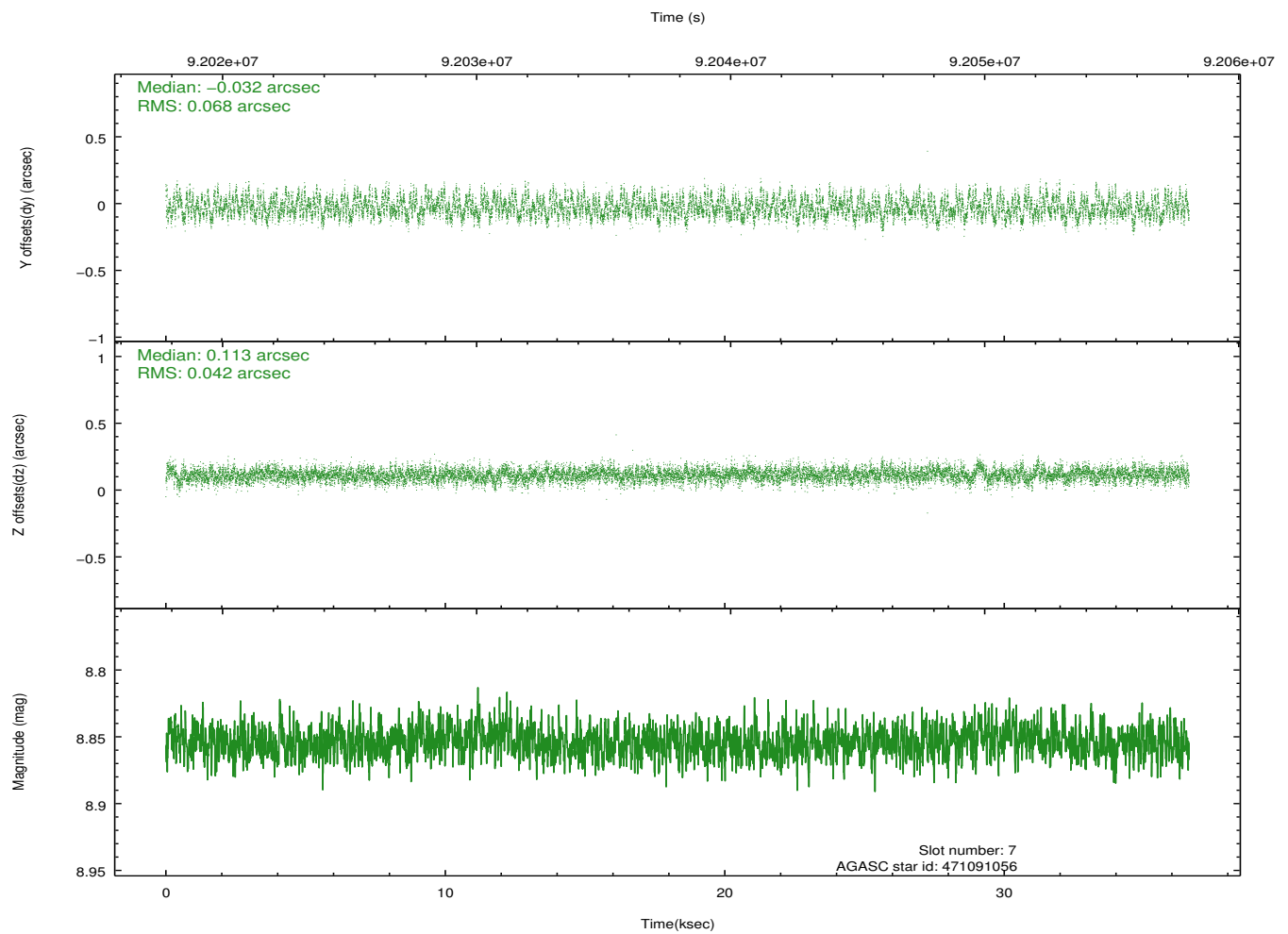
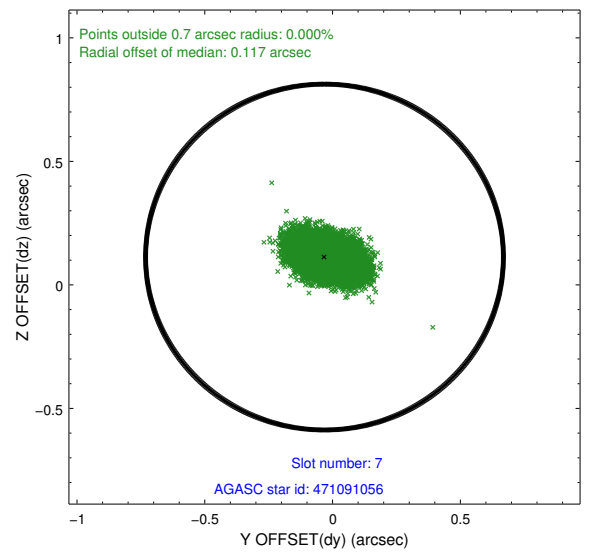
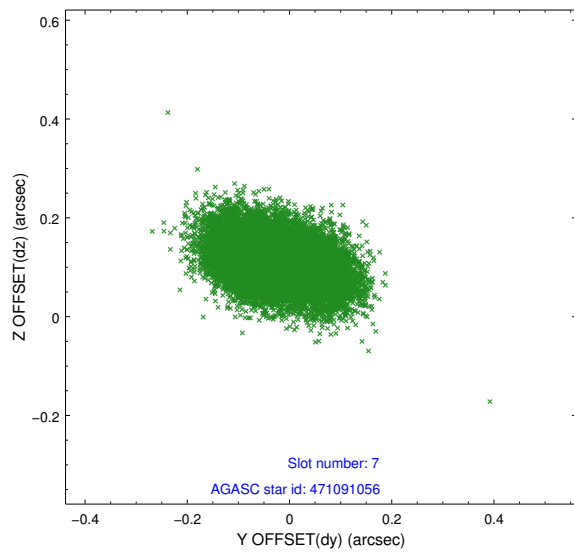
2.4.3 Slot 5



2.4.4 Slot 6

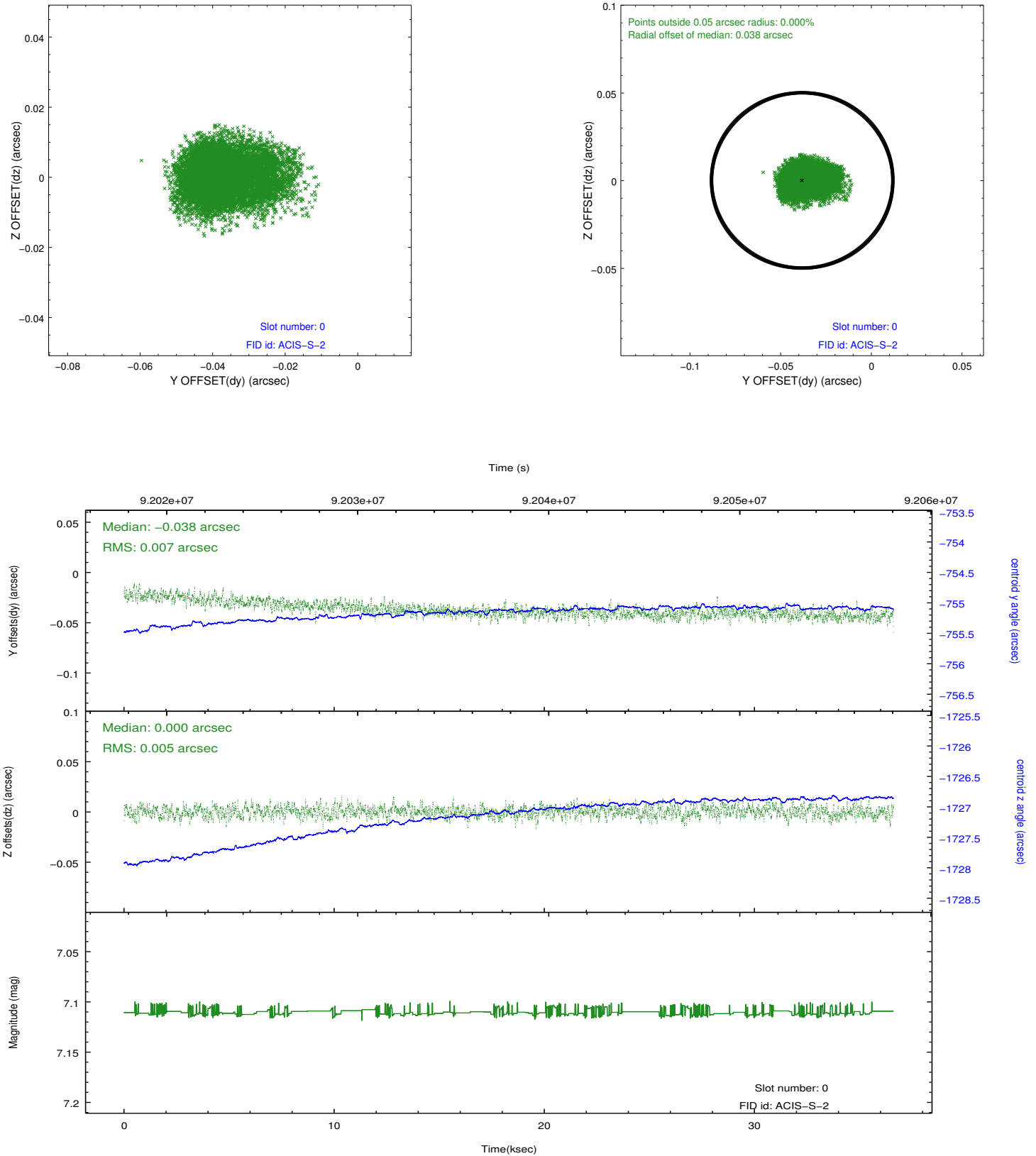


2.4.5 Slot 7

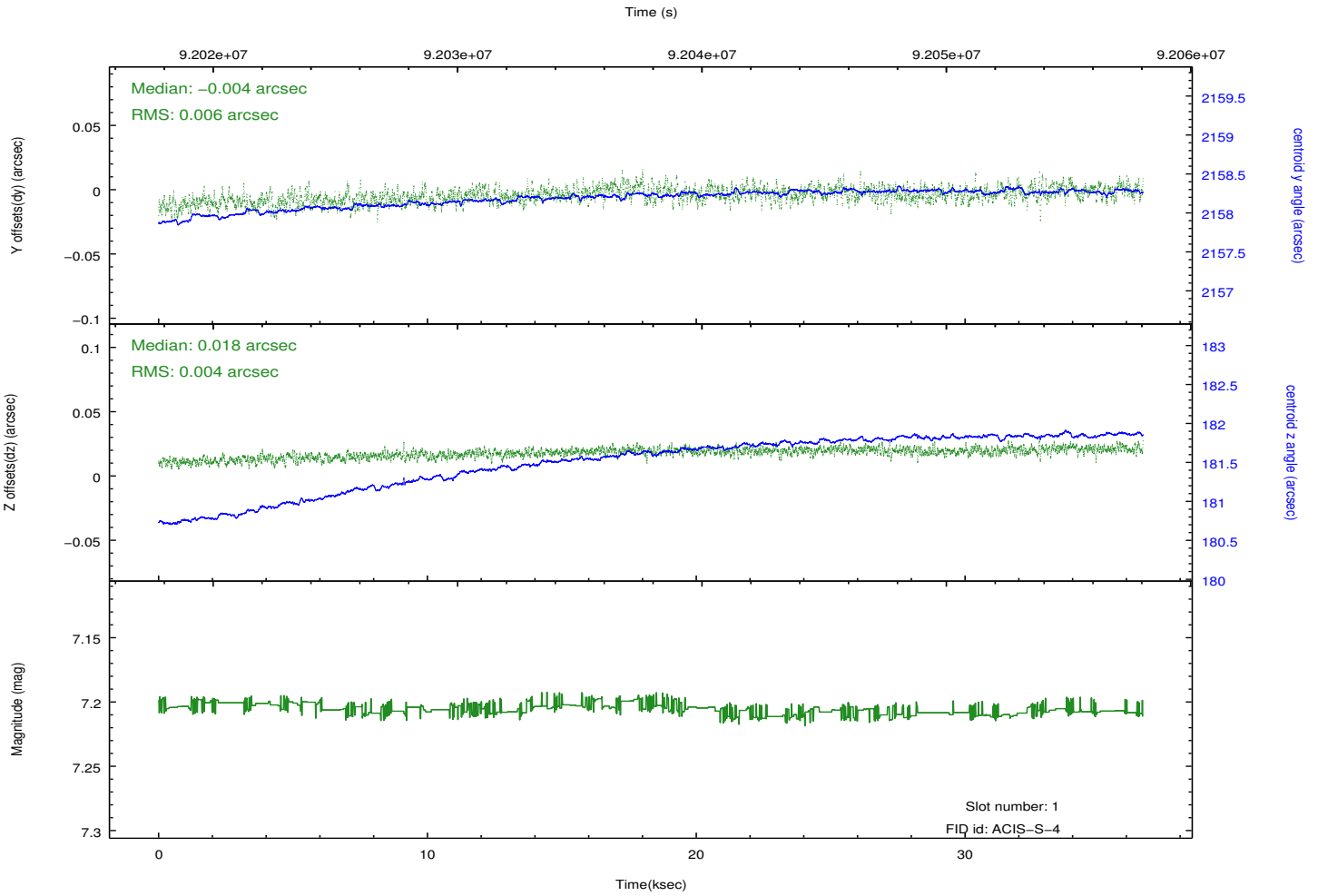
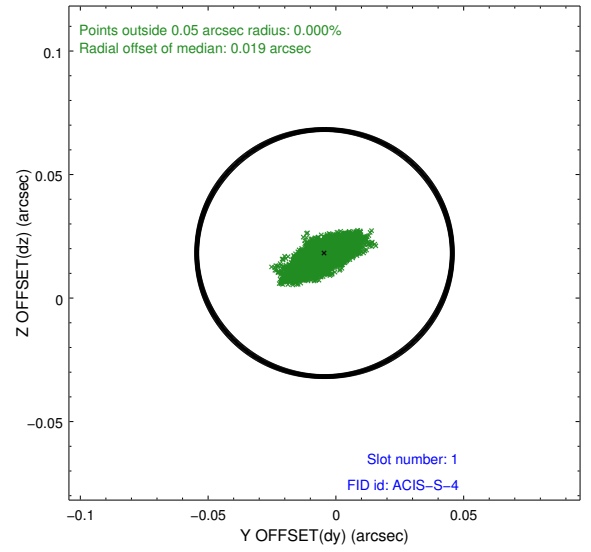
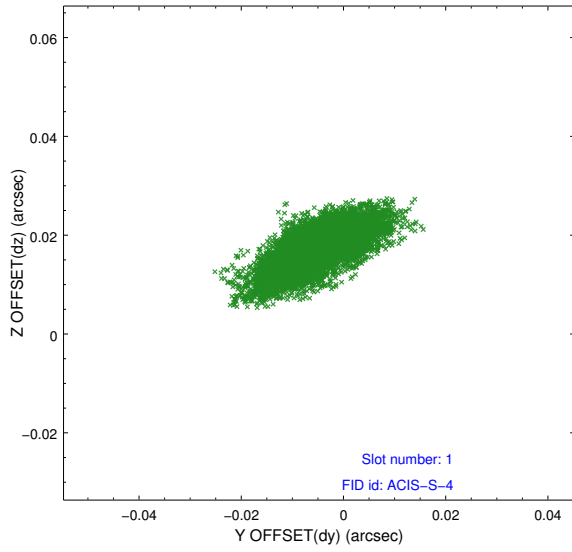


2.5 FID Slots

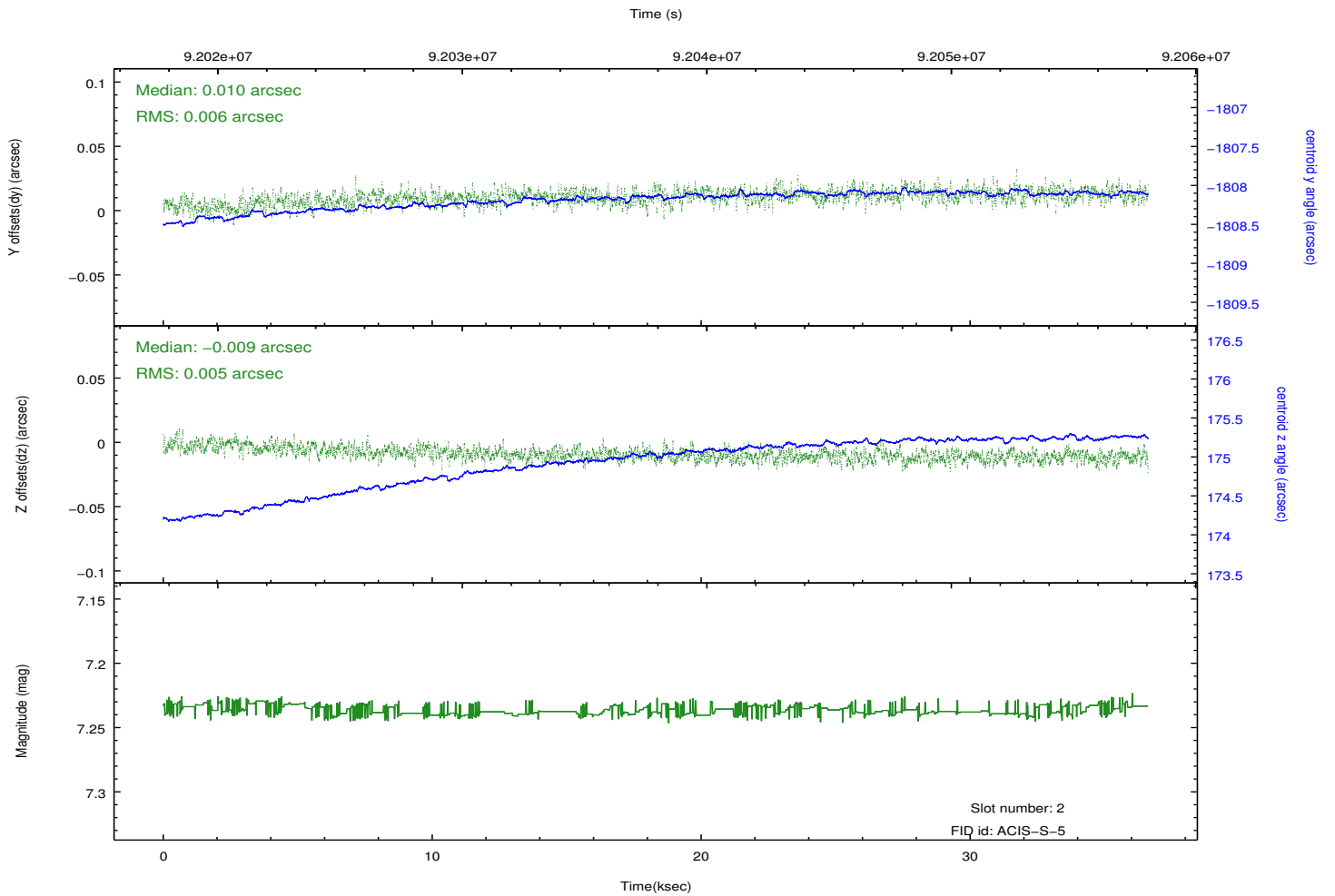
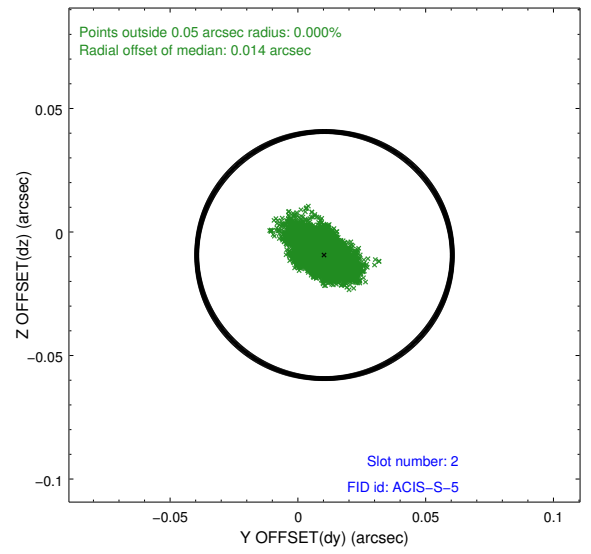
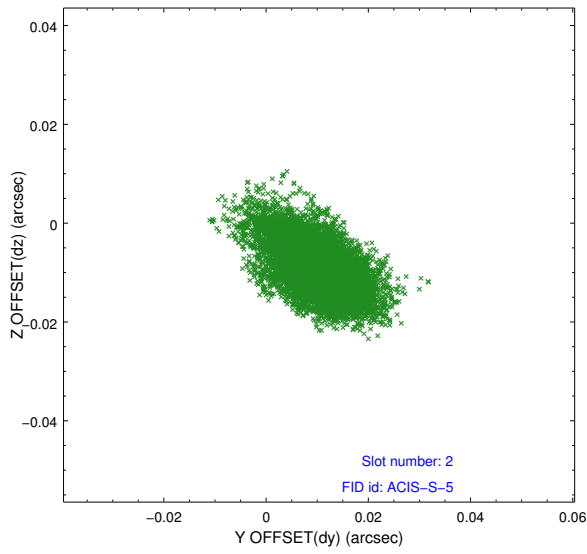
2.5.1 Slot 0



2.5.2 Slot 1



2.5.3 Slot 2



A Summary

A.1 Status

V&V Scientist	Jen Lauer
V&V Date (YYYY-MM-DD)	2012.09.11
V&V Edition	1
V&V Disposition and Status	OK
V&V Charge Time	36.616

A.2 Comments