

V&V Reference Report

L2 ASCDS Version : 8.4.5

Observation 2035 - L2 Version 3
Chandra X-Ray Center

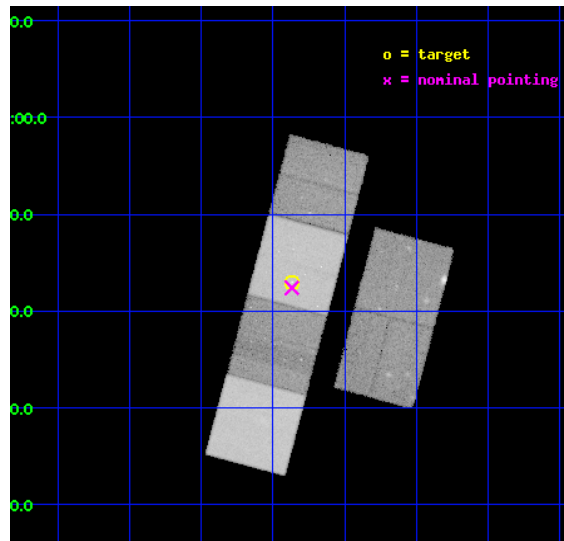
L2 Processing Date : Sep 26 2012

Contents

1	Front	2
2	OBI	3
2.1	OBI	3
2.1.1	Images	3
2.1.2	Bias	3
2.1.3	Parameters	4
2.1.4	Events	4
2.2	Compared Parameters	5
2.3	Aspect	6
2.4	Star Slots	9
2.4.1	Slot 3	9
2.4.2	Slot 4	10
2.4.3	Slot 5	11
2.4.4	Slot 6	12
2.4.5	Slot 7	13
2.5	FID Slots	14
2.5.1	Slot 0	14
2.5.2	Slot 1	15
2.5.3	Slot 2	16
A	Summary	17
A.1	Status	17
A.2	Comments	17

1 Front

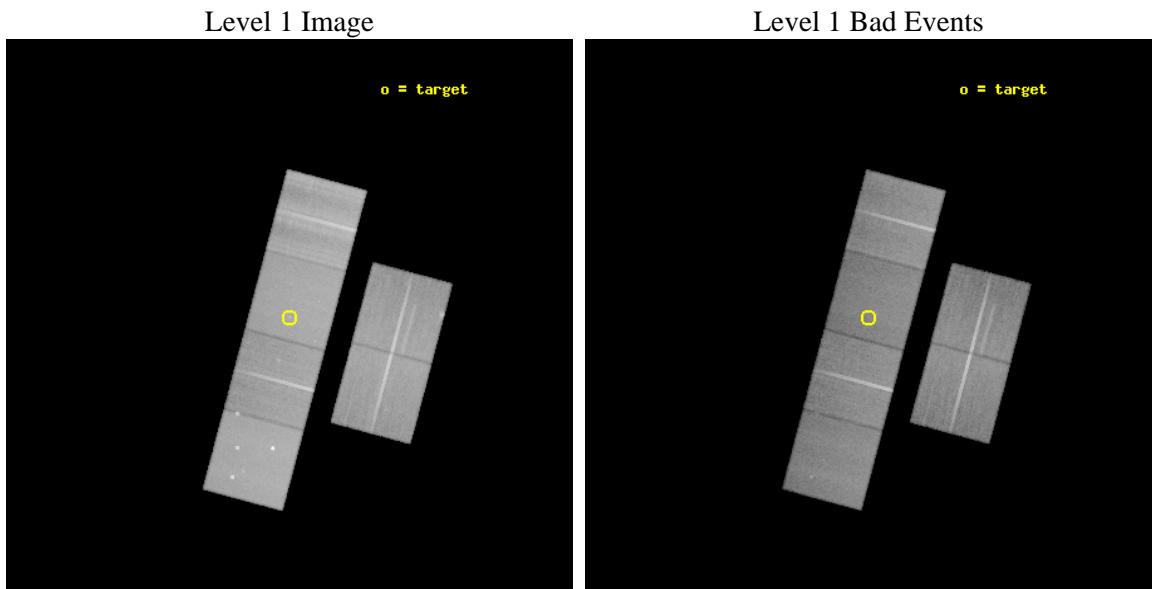
seq_num	600169	Sequence number
obs_id	2035	Observation id
title	THE X-RAY PROPERTIES OF ULTRALUMINOUS GALAXIES: COSMOLOGICAL IMPLICATIONS	Proposal title
observer	Dr. Tim Heckman	Principal investigator
object	IRAS 17208-0014	Source name
dtcycle	0	
cycle	P	events from which exps? Prim/Second/Both
ra_targ	260.84125	Observer's specified target RA [deg]
dec_targ	-0.283444	Observer's specified target Dec [deg]
ra_nom	260.8420481875	Nominal RA [deg]
dec_nom	-0.29315401121841	Nominal Dec [deg]
roll_nom	284.91909118845	Nominal Roll [deg]
revision	3	Processing version of data
ontime	49157.708519086	Sum of GTIs [s]
livetime	48535.244014599	Livetime [s]
ontime2	49157.74955909	Sum of GTIs [s]
ontime3	49157.585399091	Sum of GTIs [s]
ontime5	49157.667479083	Sum of GTIs [s]
ontime6	49154.385478839	Sum of GTIs [s]
ontime7	49157.708519086	Sum of GTIs [s]
ontime8	49151.062338904	Sum of GTIs [s]
l2events	542208	Number of level 2 events



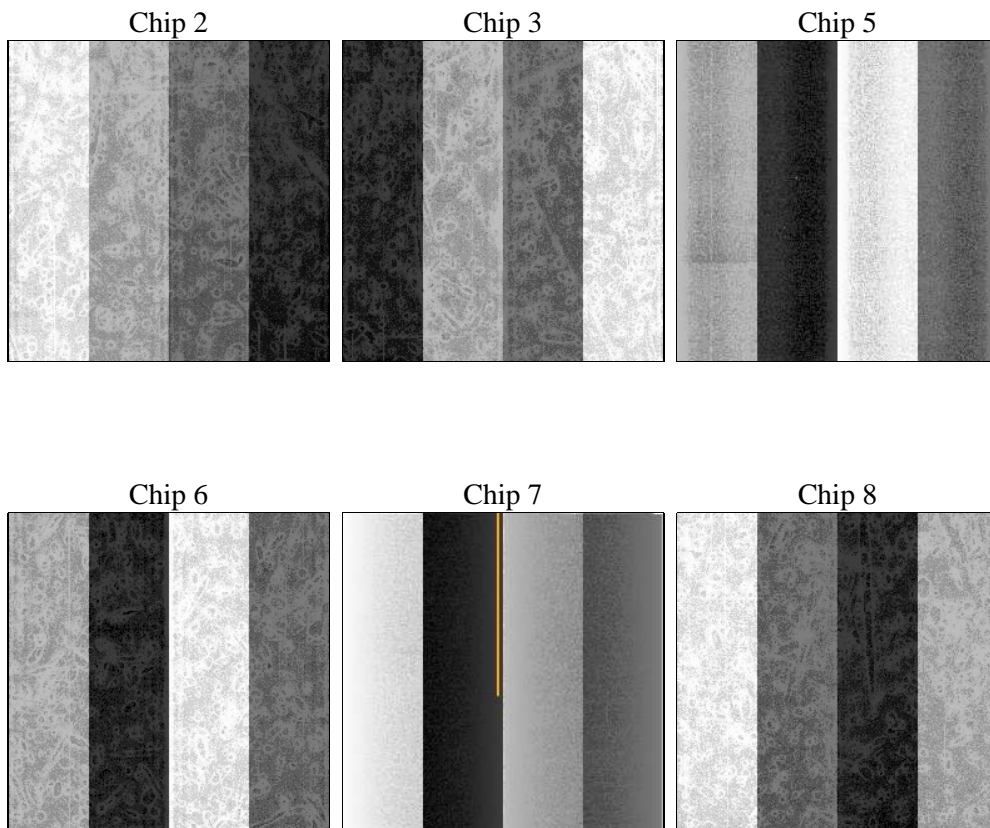
2 OBI

2.1 OBI

2.1.1 Images



2.1.2 Bias



2.1.3 Parameters

obi_num	1	Obi number	sched_exp_time	49400.000000	[s] Scheduled observation exposure time
ascdsver	8.4.5	Processing system revision	ontime	49157.708519086	Sum of GTIs [s]
caldbver	4.5.1.1	 	ontime2	49157.74955909	Sum of GTIs [s]
date	2012-09-26T03:31:37	Date and time of file creation	ontime3	49157.585399091	Sum of GTIs [s]
revision	3	Processing version of data	ontime5	49157.667479083	Sum of GTIs [s]
			ontime6	49154.385478839	Sum of GTIs [s]
			ontime7	49157.708519086	Sum of GTIs [s]
			ontime8	49151.062338904	Sum of GTIs [s]
			l1events	2383175	Number of level 1 events

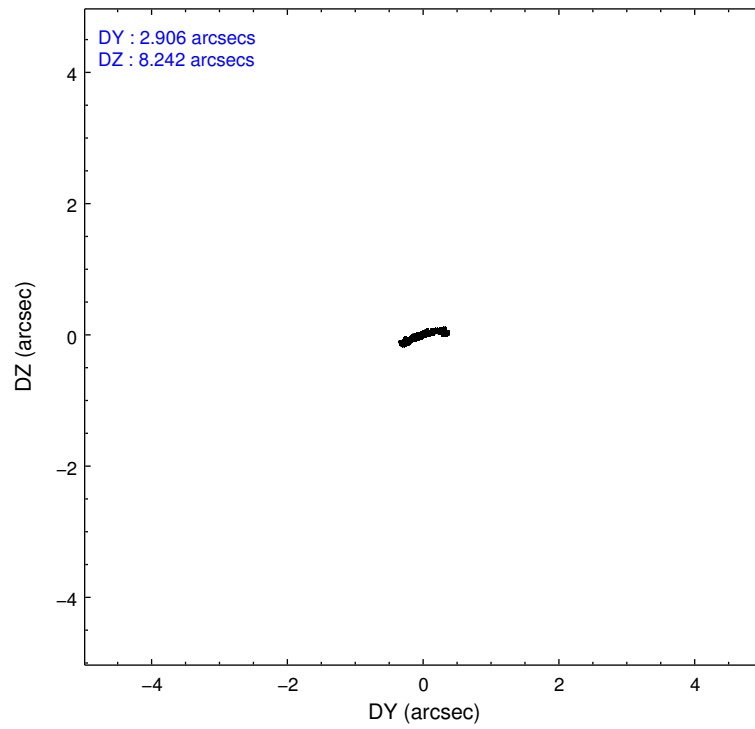
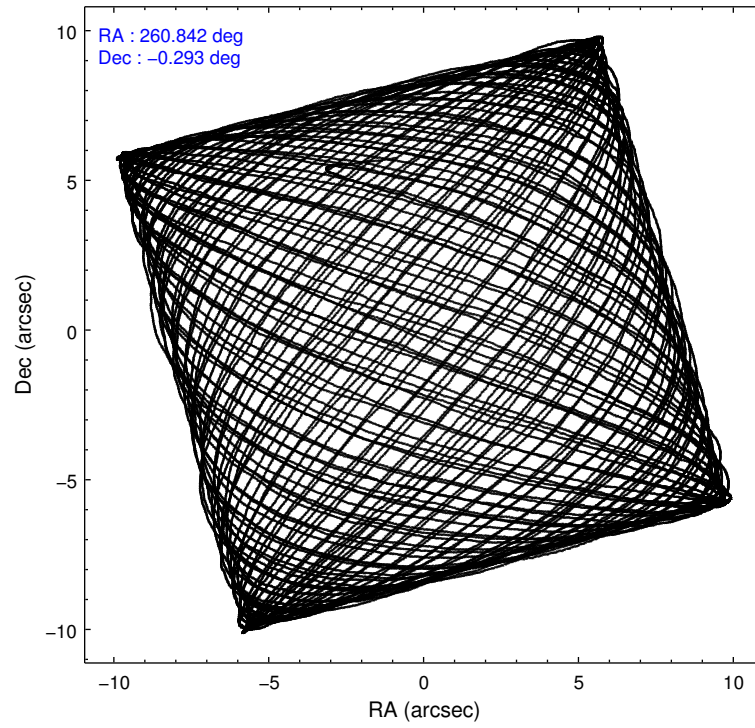
2.1.4 Events

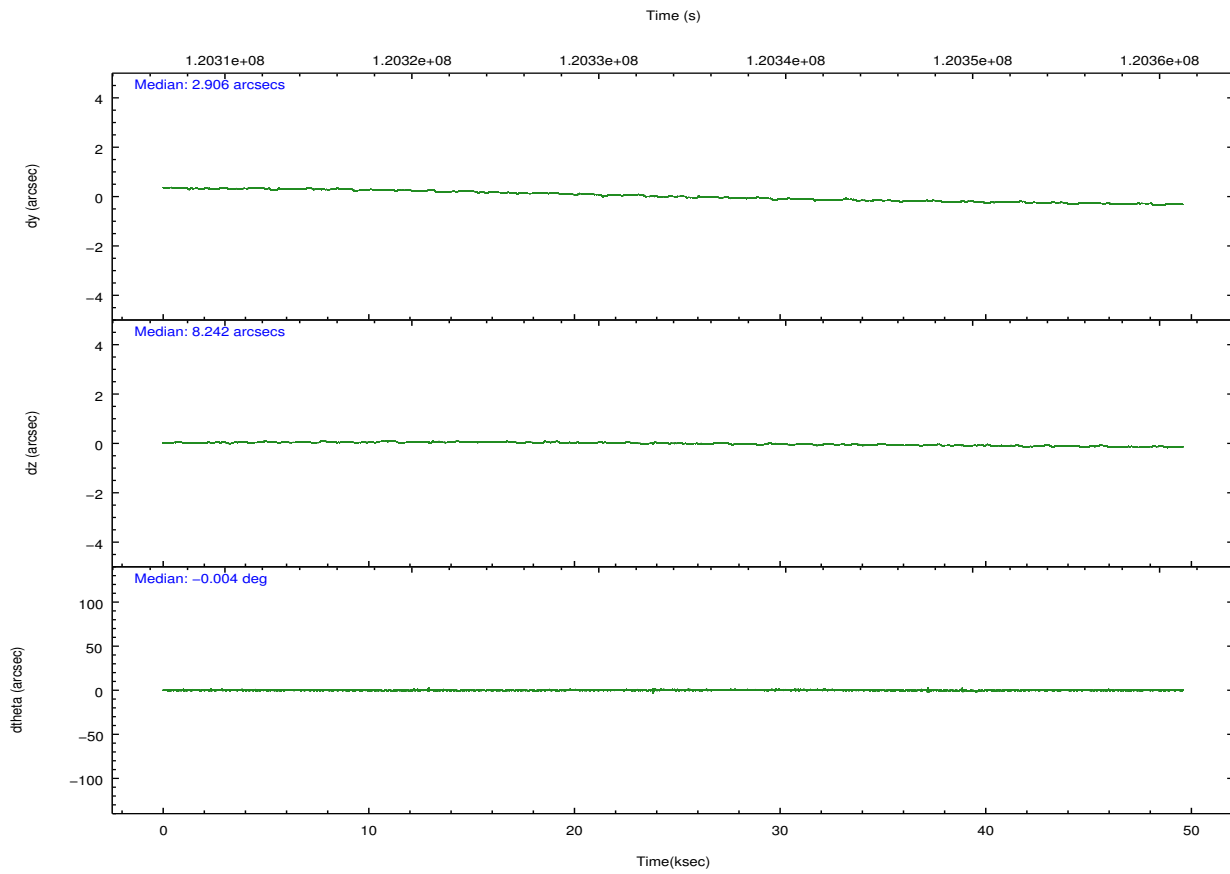
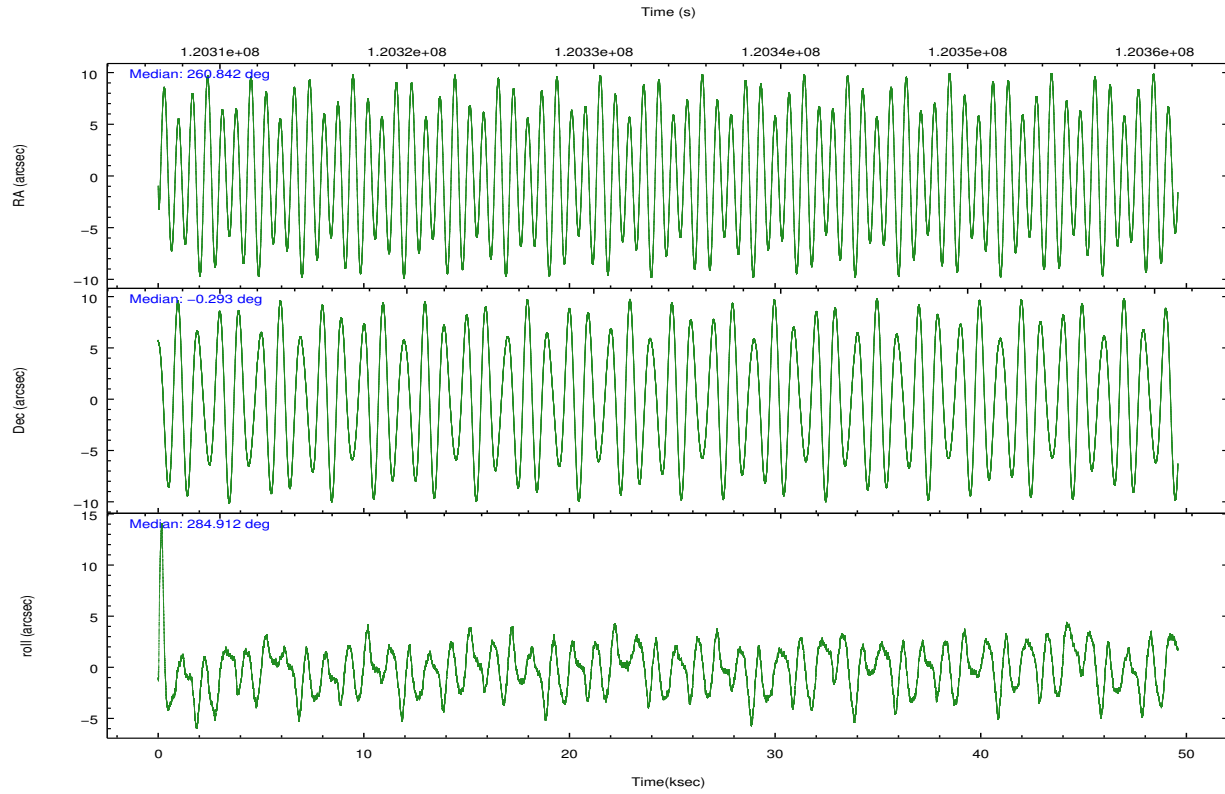
	ccd 2	ccd 3	ccd 5	ccd 6	ccd 7	ccd 8		ccd 2	ccd 3	ccd 5	ccd 6	ccd 7	ccd 8
level 1 events	346517	329033	464109	338929	410552	494035	grade 0 events	21196	21536	35396	21151	19129	58945
rejected events	300197	282121	239794	291492	229962	327882		6%	6%	7%	6%	4%	11%
rejected %	86%	85%	51%	86%	56%	66%	grade 1 events	165	182	1041	179	416	497
								0%	0%	0%	0%	0%	0%
							grade 2 events	10249	9765	62798	10293	36667	26397
								2%	2%	13%	3%	8%	5%
							grade 3 events	3376	3630	10443	3792	16564	25845
								0%	1%	2%	1%	4%	5%
							grade 4 events	3723	3845	9922	3706	16429	23126
								1%	1%	2%	1%	4%	4%
							grade 5 events	10632	11793	33637	13158	37874	17157
								3%	3%	7%	3%	9%	3%
							grade 6 events	7780	8149	105792	8500	91840	31859
								2%	2%	22%	2%	22%	6%
							grade 7 events	289396	270133	205080	278150	191633	310209
								83%	82%	44%	82%	46%	62%

2.2 Compared Parameters

Parameter	Planned	Actual	Parameter	Planned	Actual
Instrument	ACIS	ACIS	Obspar format version number	7	7
Detector	ACIS-235678	ACIS-235678	Obspar file type	PREDICTED	ACTUAL
Grating	NONE	NONE	Obspar update status	NONE	UPDATED
Data mode	FAINT	FAINT	Number of optional ACIS chips dropped	0	0
Observation mode	POINTING	POINTING	On-chip summing requested	N	N
[deg] Pointing RA	260.822580	260.8420481875021	Subarray requested	NONE	NONE
[deg] Pointing Dec	-0.274058	-0.2931540112184076	Alternating exposures requested	N	N
[deg] Pointing Roll	284.762366	284.9190911884494	[s] Primary exposure time	0.000000	3.2
[mm] SIM focus pos	-0.684267	-0.6828225247311905			
[mm] SIM defocus	0	0.001444936568705701			
[mm] SIM translation stage pos	-190.132523	-190.1400660498719			
[mm] SIM translation stage offset	0	0.00754346686406393			
[s] Observation start time (MET)	120309364.184000	120308596.17515			
Observation start date	2001-10-24T11:15:00	2001-10-24T11:03:16			
[s] Observation end time (MET)	120358764.184000	120359723.68968			
Observation end date	2001-10-25T00:58:20	2001-10-25T01:15:23			
Read mode	TIMED	TIMED			

2.3 Aspect



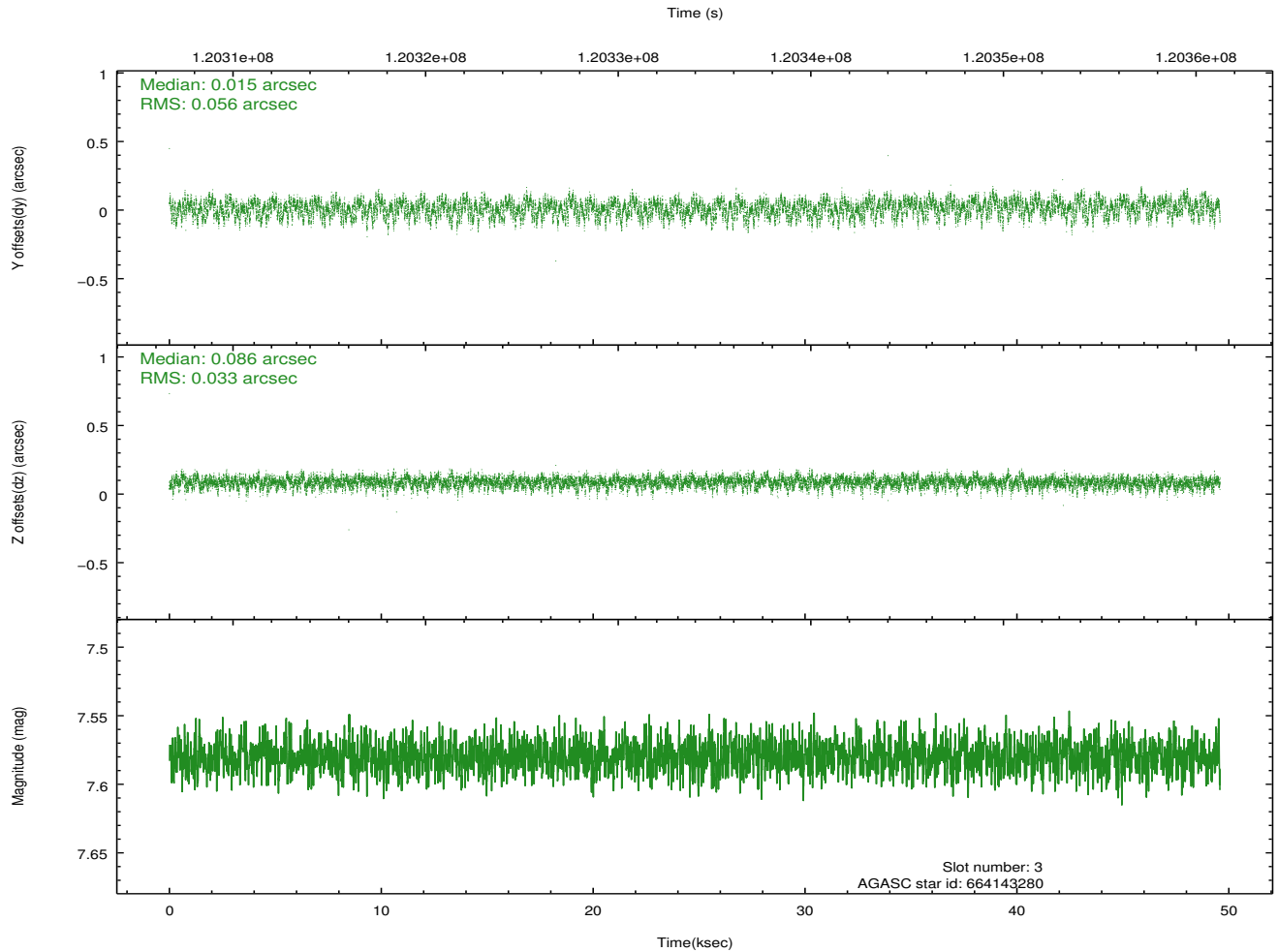
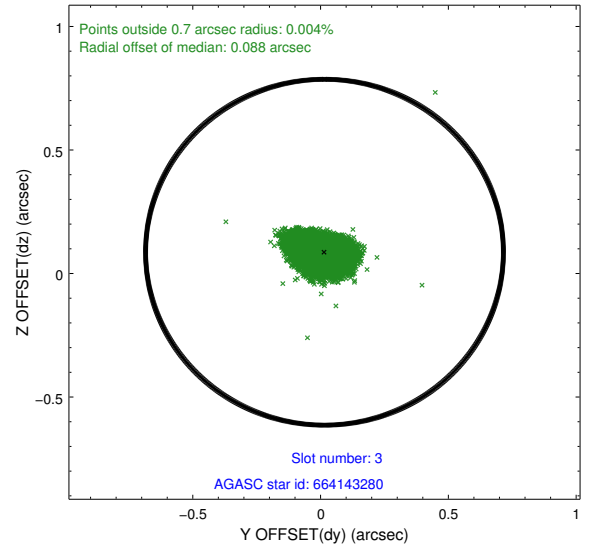
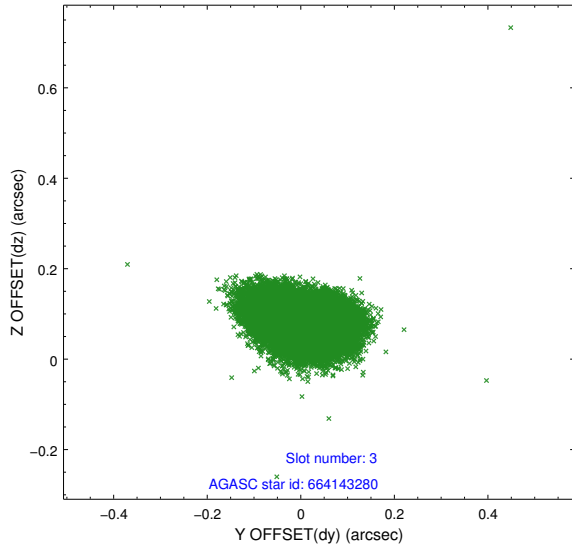


Slot Statistics

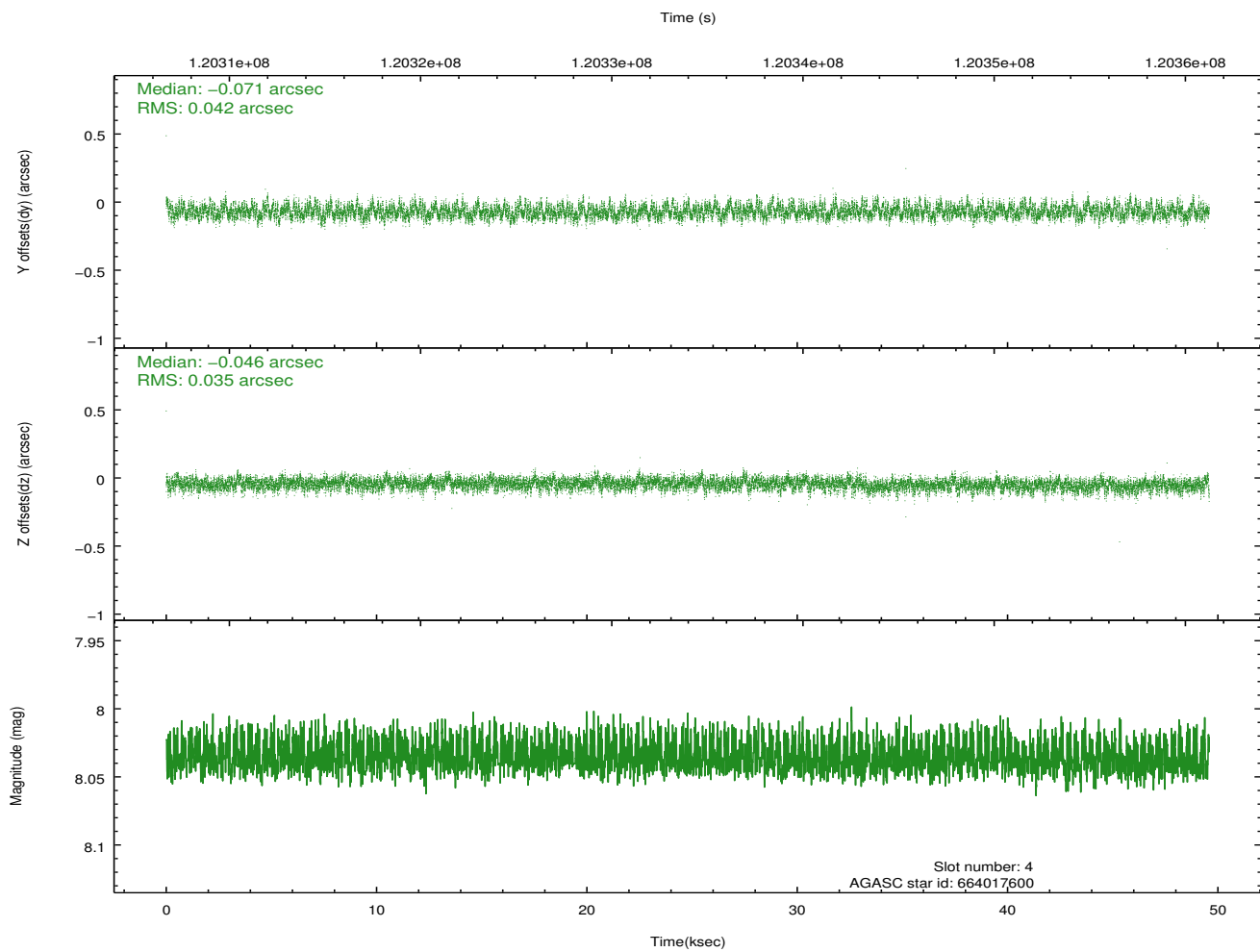
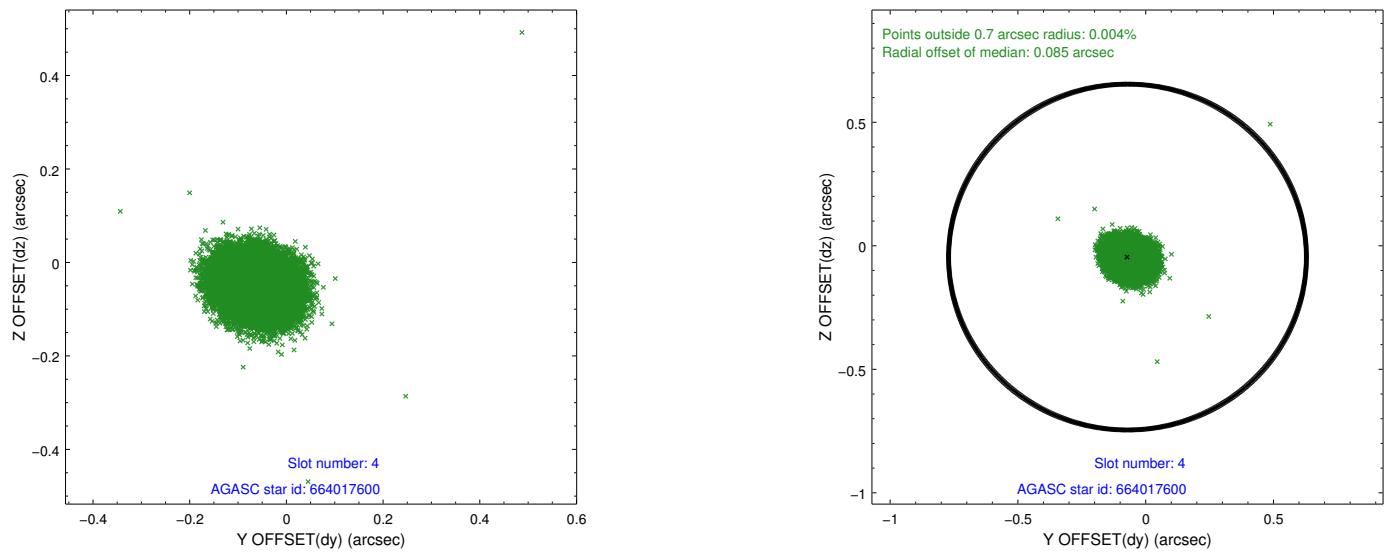
slot	status	id	mag	n_pts	med_dy	med_dz	dr1	dr2	ra	dec	mean_y	mean_z
0	FID	ACIS-S-2	7.11	12093	-0.001	-0.007	0.011	0.018	0.000000	0.000000	-755.58	-1729.43
1	FID	ACIS-S-4	7.20	12094	-0.039	0.002	0.013	0.022	0.000000	0.000000	2157.68	179.07
2	FID	ACIS-S-5	7.24	12093	0.012	0.013	0.010	0.018	0.000000	0.000000	-1808.41	172.75
3	GUIDE	664143280	7.58	24187	0.015	0.086	0.069	0.114	260.685224	-0.894069	2033.63	-1046.16
4	GUIDE	664017600	8.04	24185	-0.071	-0.046	0.058	0.094	260.331672	-0.649009	856.27	-2052.33
5	GUIDE	664015800	9.12	24157	-0.069	-0.077	0.093	0.153	260.129461	-0.165769	-1011.48	-2313.47
6	GUIDE	52569416	9.15	24183	-0.044	-0.026	0.088	0.142	261.287147	0.179746	-1153.01	2033.70
7	GUIDE	664147520	9.37	24144	0.174	0.060	0.086	0.141	261.128219	-0.663677	1637.71	707.30

2.4 Star Slots

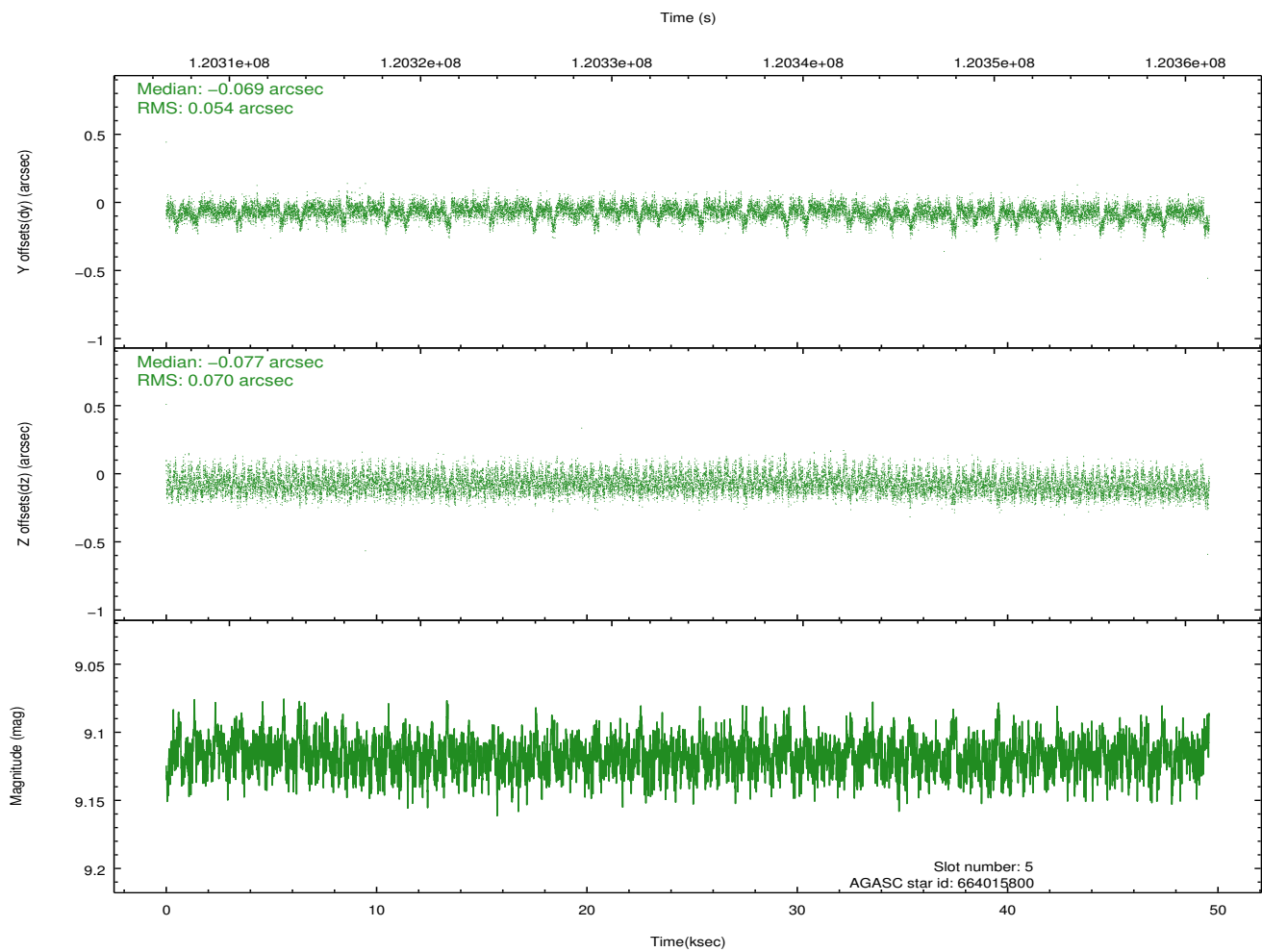
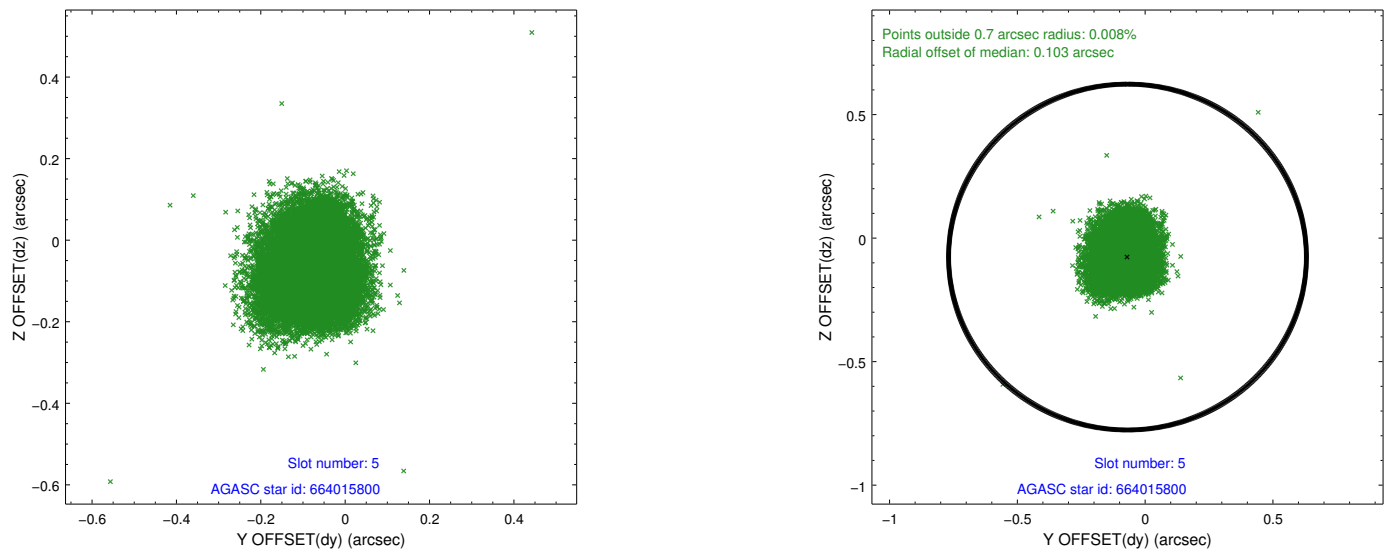
2.4.1 Slot 3



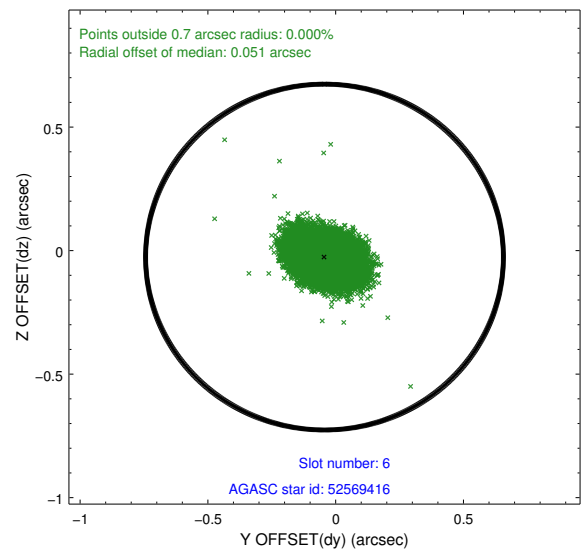
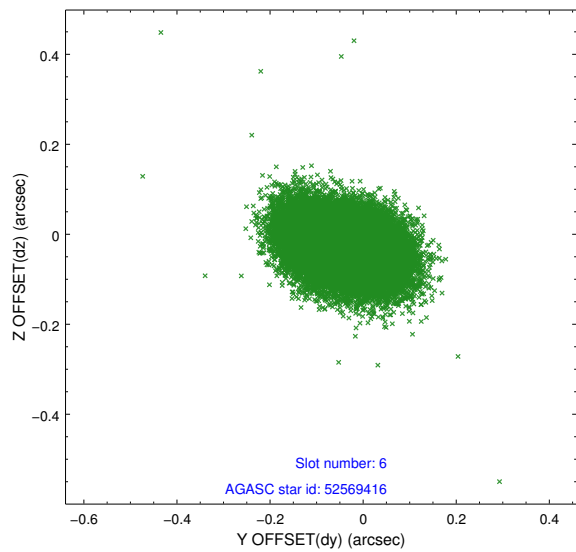
2.4.2 Slot 4



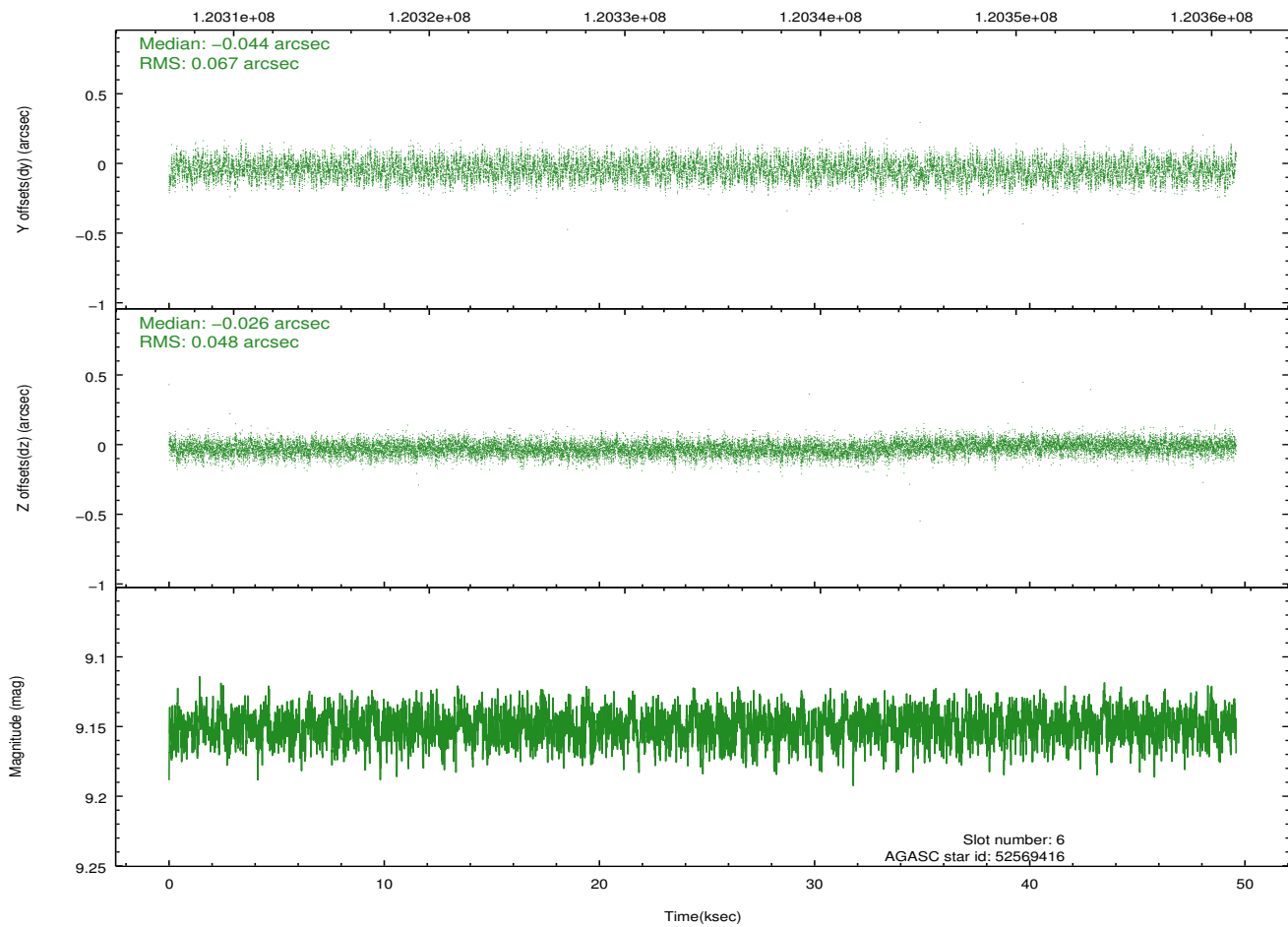
2.4.3 Slot 5



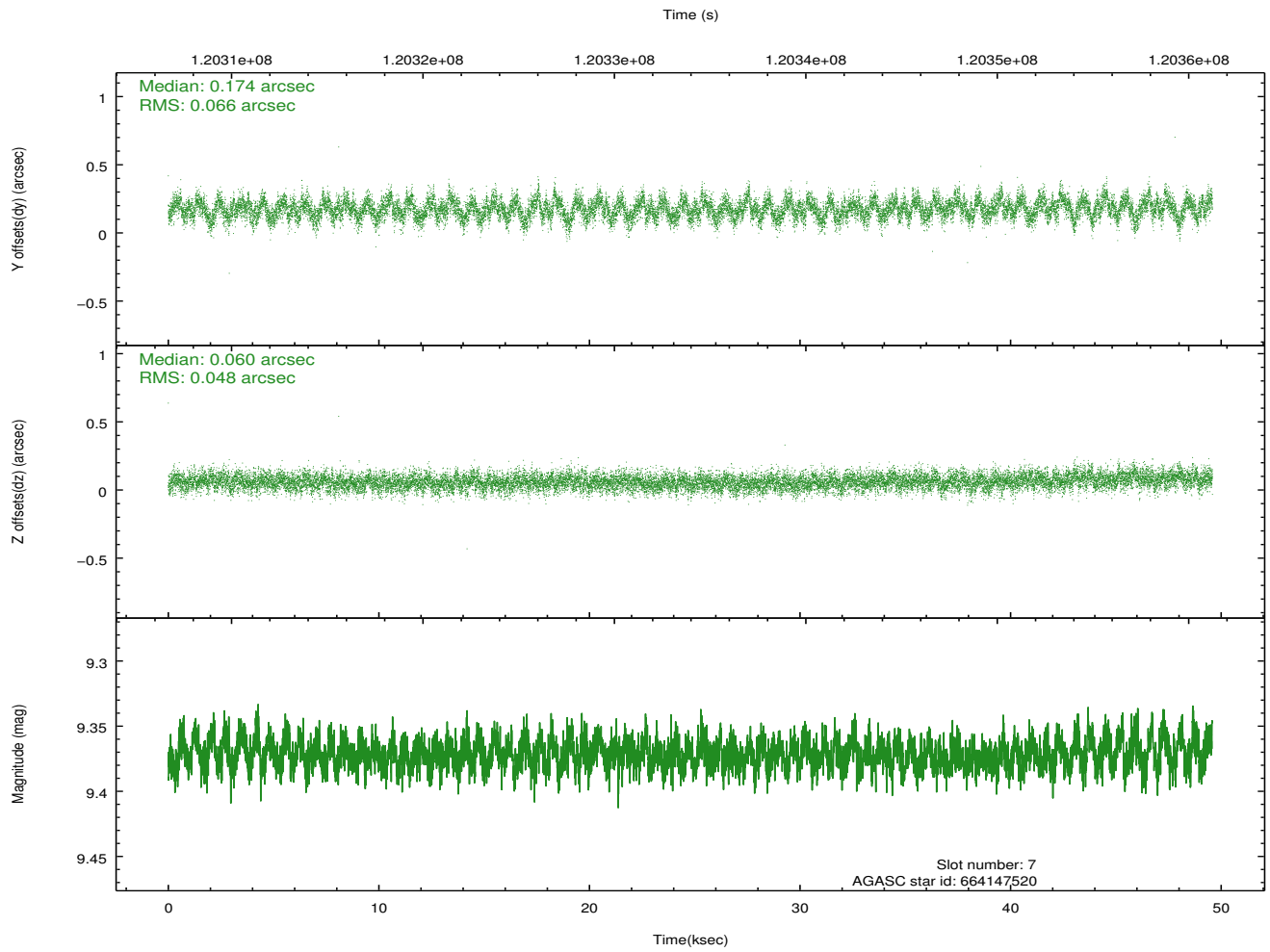
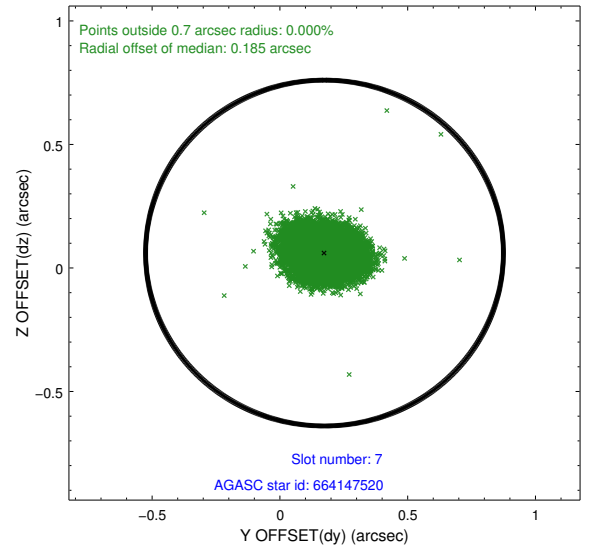
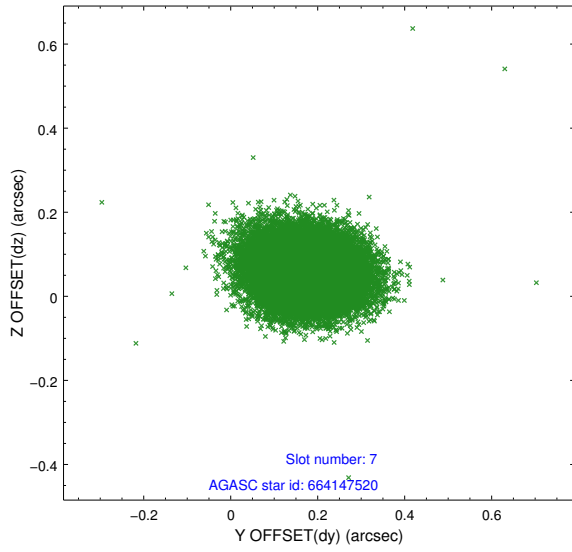
2.4.4 Slot 6



Time (s)

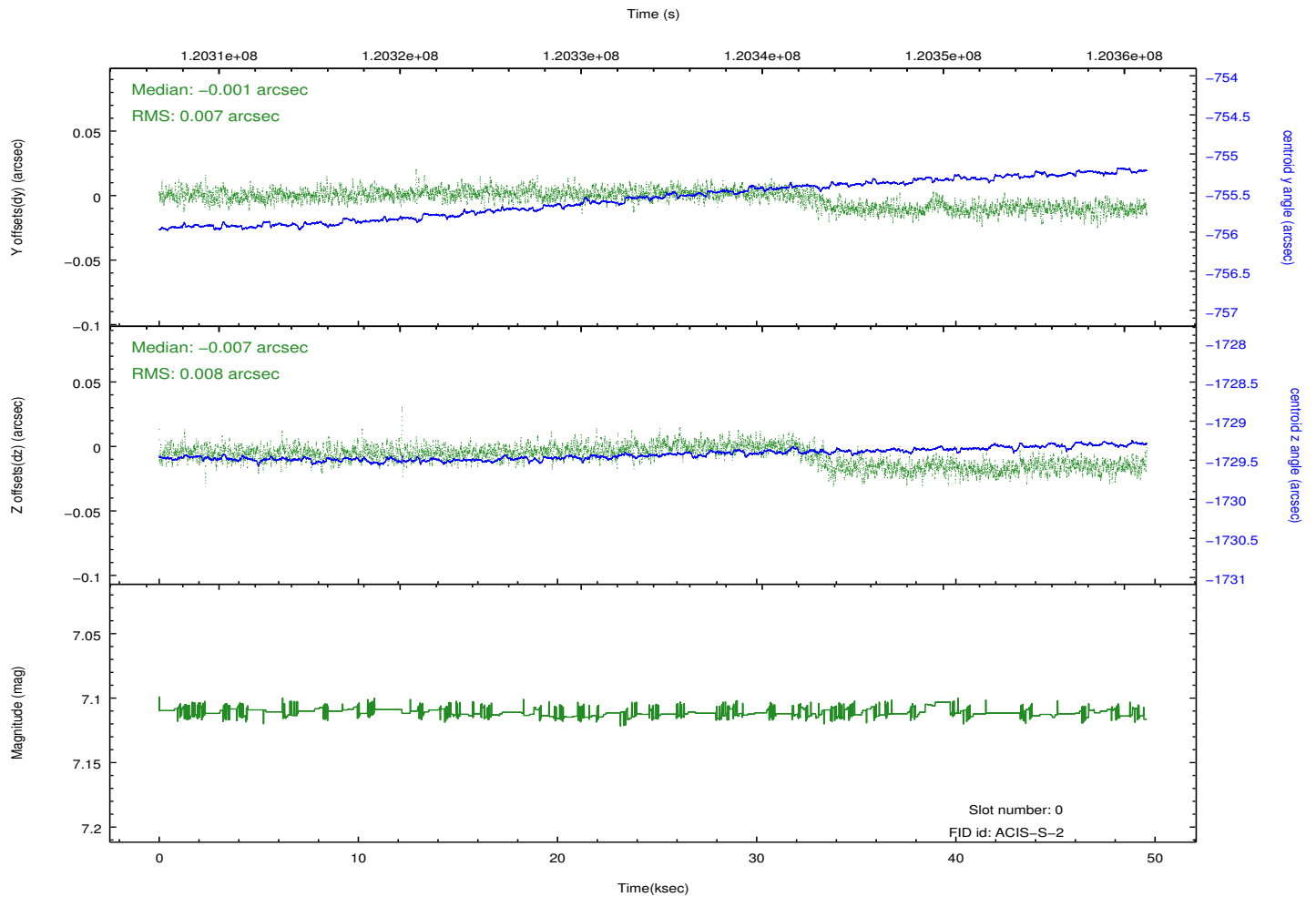
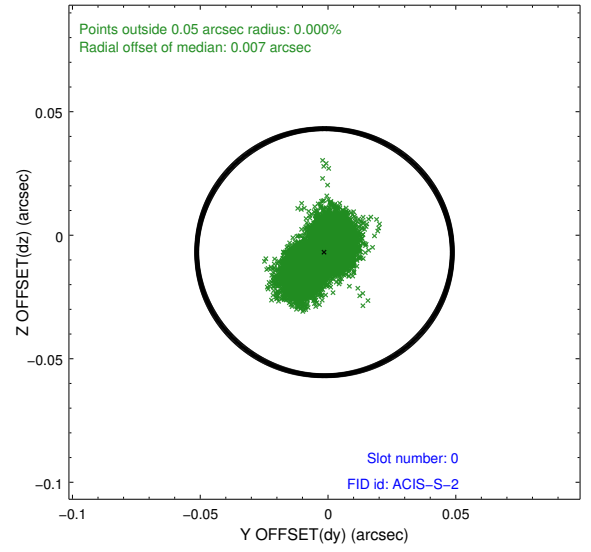
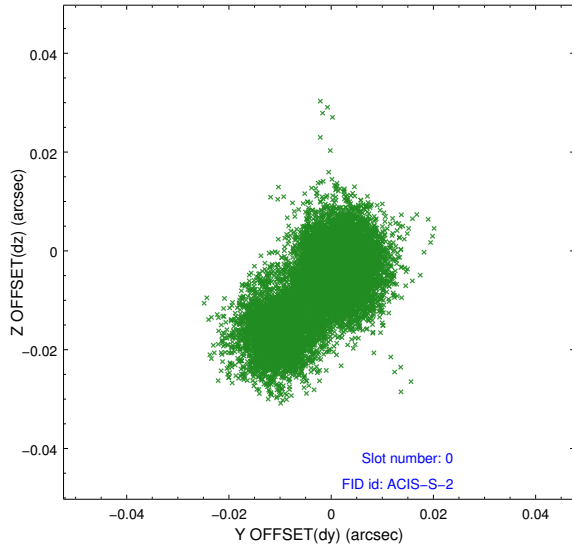


2.4.5 Slot 7

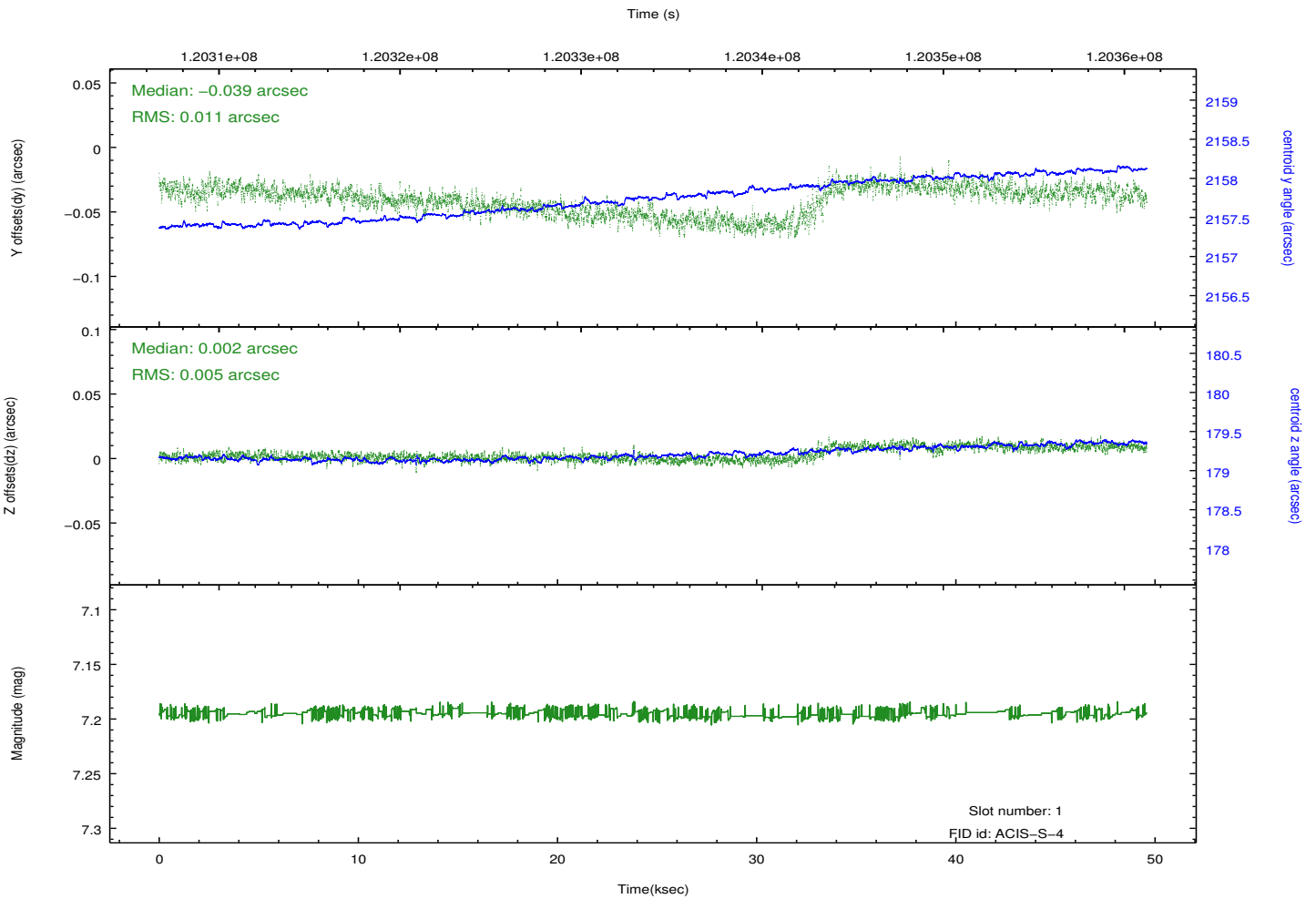
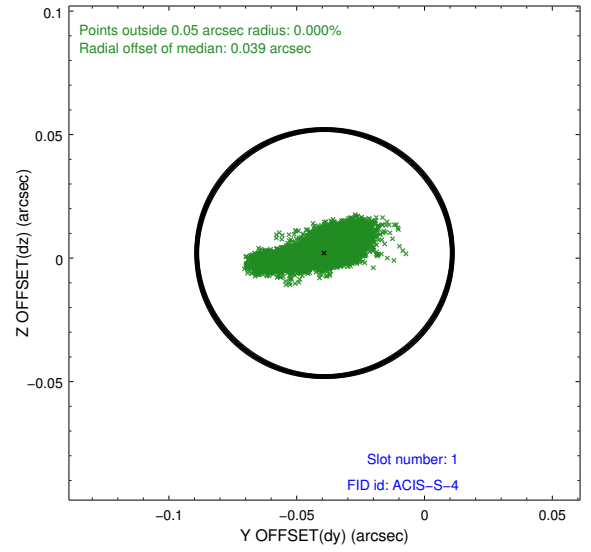
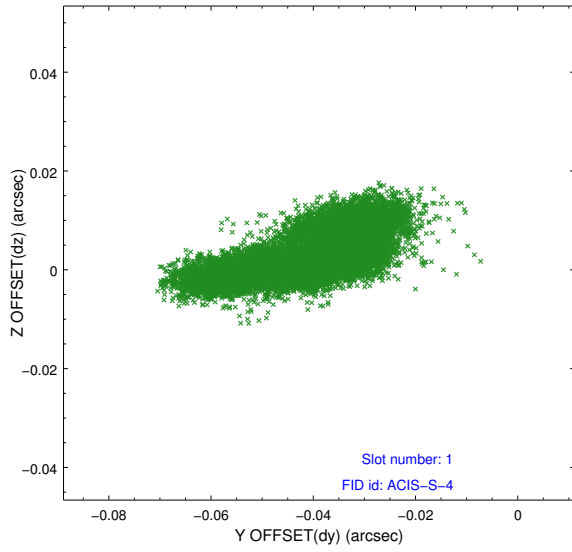


2.5 FID Slots

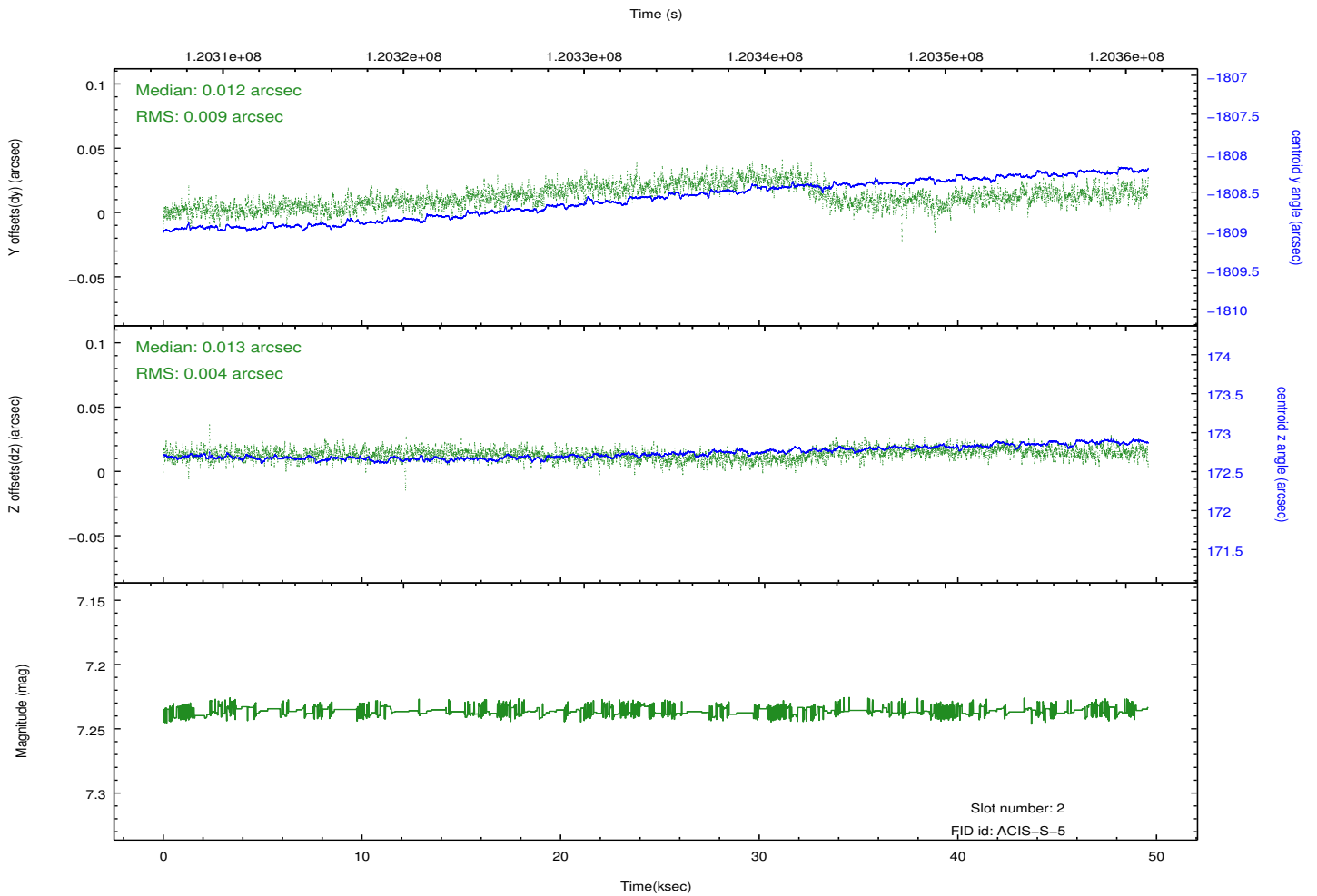
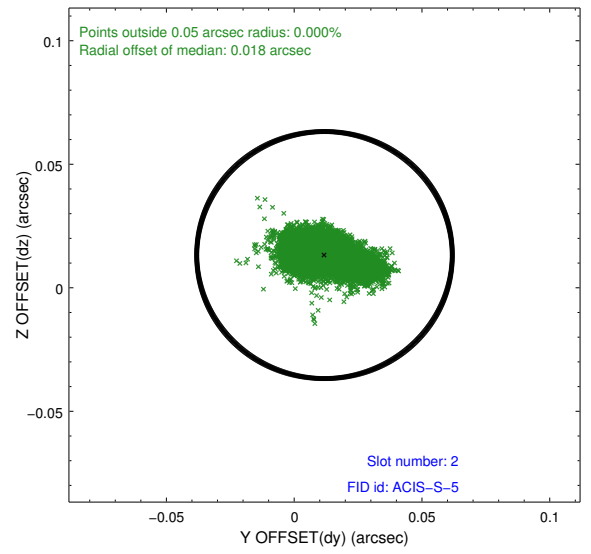
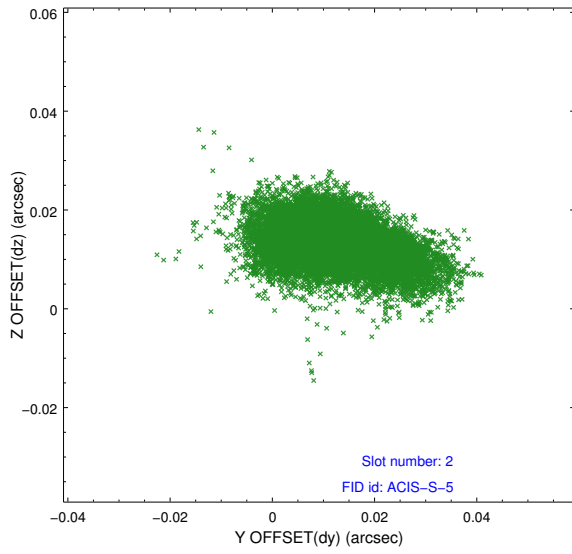
2.5.1 Slot 0



2.5.2 Slot 1



2.5.3 Slot 2



A Summary

A.1 Status

V&V Scientist	Beth Sundheim
V&V Date (YYYY-MM-DD)	2012.09.27
V&V Edition	1
V&V Disposition and Status	OK
V&V Charge Time	49.16

A.2 Comments