

V&V Reference Report

L2 ASCDS Version : 8.4.5

Observation 2285 - L2 Version 3
Chandra X-Ray Center

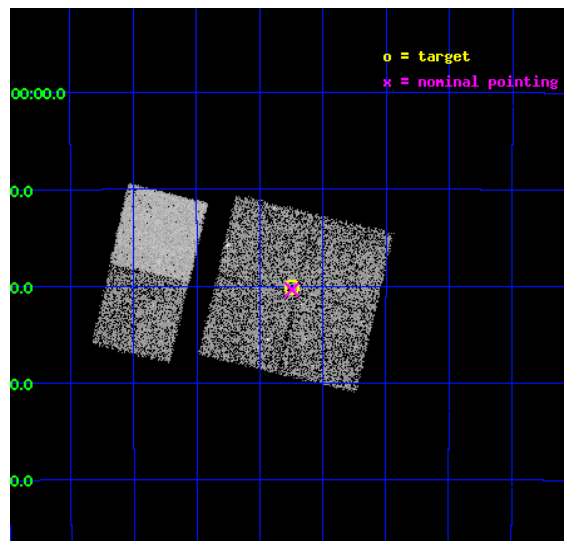
L2 Processing Date : Sep 20 2012

Contents

1	Front	2
2	OBI	3
2.1	OBI	3
2.1.1	Images	3
2.1.2	Bias	3
2.1.3	Parameters	4
2.1.4	Events	4
2.2	Compared Parameters	5
2.3	Aspect	6
2.4	Star Slots	9
2.4.1	Slot 3	9
2.4.2	Slot 4	10
2.4.3	Slot 5	11
2.4.4	Slot 6	12
2.4.5	Slot 7	13
2.5	FID Slots	14
2.5.1	Slot 0	14
2.5.2	Slot 1	15
2.5.3	Slot 2	16
A	Summary	17
A.1	Status	17
A.2	Comments	17

1 Front

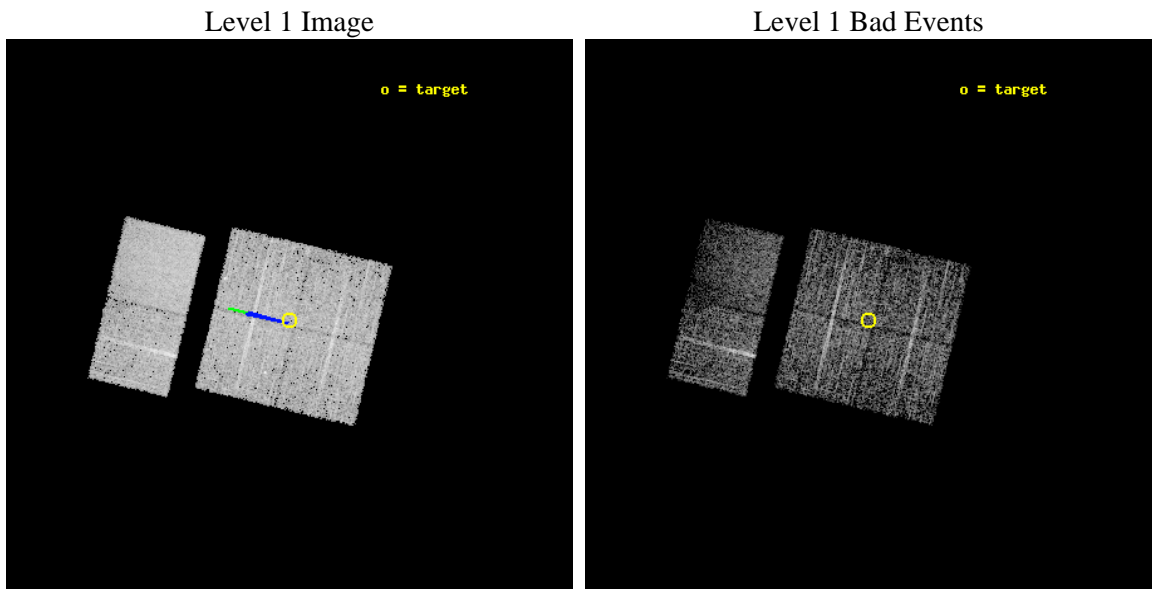
seq_num	900112	Sequence number
obs_id	2285	Observation id
title	CHANDRA SURVEY OF THE GALACTIC RIDGE AROUND THE MILKY WAY CENTER	P
observer	Prof. Q. Daniel Wang	Principal investigator
object	GCS 6	Source name
dtcycle	0	
cycle	P	events from which exps? Prim/Second/Both
ra_targ	266.5622	Observer's specified target RA [deg]
dec_targ	-28.3352	Observer's specified target Dec [deg]
ra_nom	266.56136105131	Nominal RA [deg]
dec_nom	-28.33985821171	Nominal Dec [deg]
roll_nom	283.40729567444	Nominal Roll [deg]
revision	3	Processing version of data
ontime	10540.800009802	Sum of GTIs [s]
livetime	10407.32605317	Livetime [s]
ontime0	10540.800009802	Sum of GTIs [s]
ontime1	10540.800009802	Sum of GTIs [s]
ontime2	10540.800009802	Sum of GTIs [s]
ontime3	10540.800009802	Sum of GTIs [s]
ontime6	10540.800009802	Sum of GTIs [s]
ontime7	10540.800009802	Sum of GTIs [s]
l2events	44205	Number of level 2 events



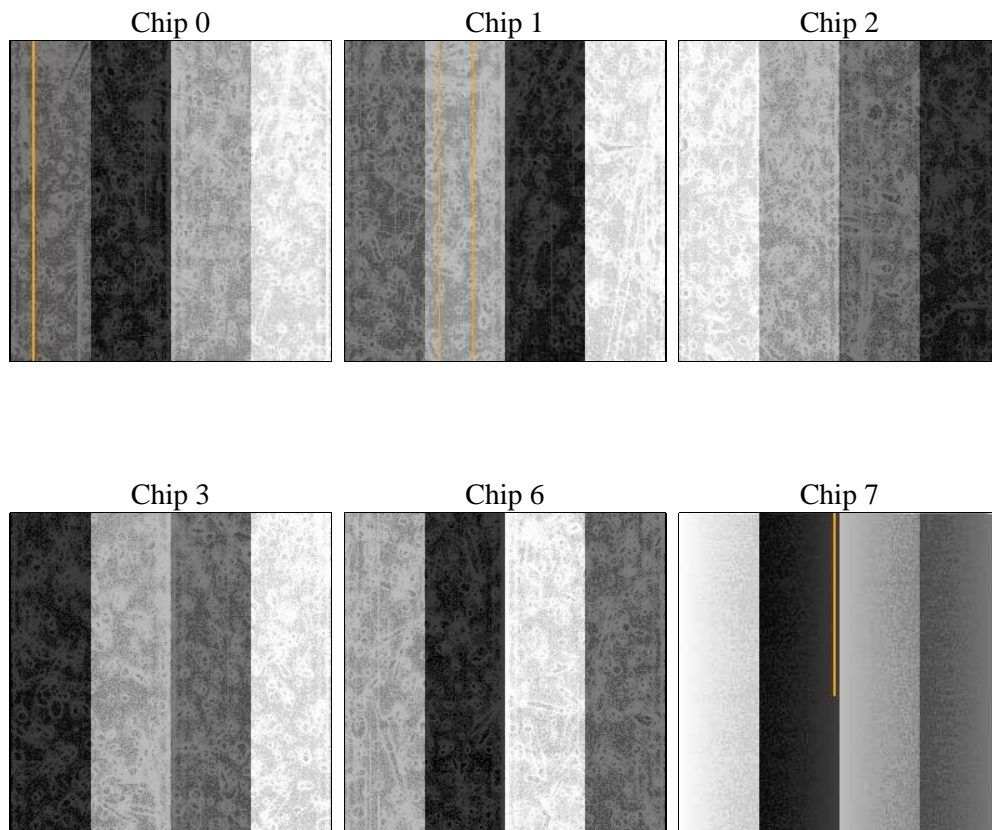
2 OBI

2.1 OBI

2.1.1 Images



2.1.2 Bias



2.1.3 Parameters

obi_num	0	Obi number	sched_exp_time	10782.823000	[s] Scheduled observation exposure time
ascdsver	8.4.5	Processing system revision	ontime	10540.800009802	Sum of GTIs [s]
caldbver	4.5.1.1	 	ontime0	10540.800009802	Sum of GTIs [s]
date	2012-09-20T19:09:21	Date and time of file creation	ontime1	10540.800009802	Sum of GTIs [s]
revision	3	Processing version of data	ontime2	10540.800009802	Sum of GTIs [s]
			ontime3	10540.800009802	Sum of GTIs [s]
			ontime6	10540.800009802	Sum of GTIs [s]
			ontime7	10540.800009802	Sum of GTIs [s]
			l1events	175068	Number of level 1 events

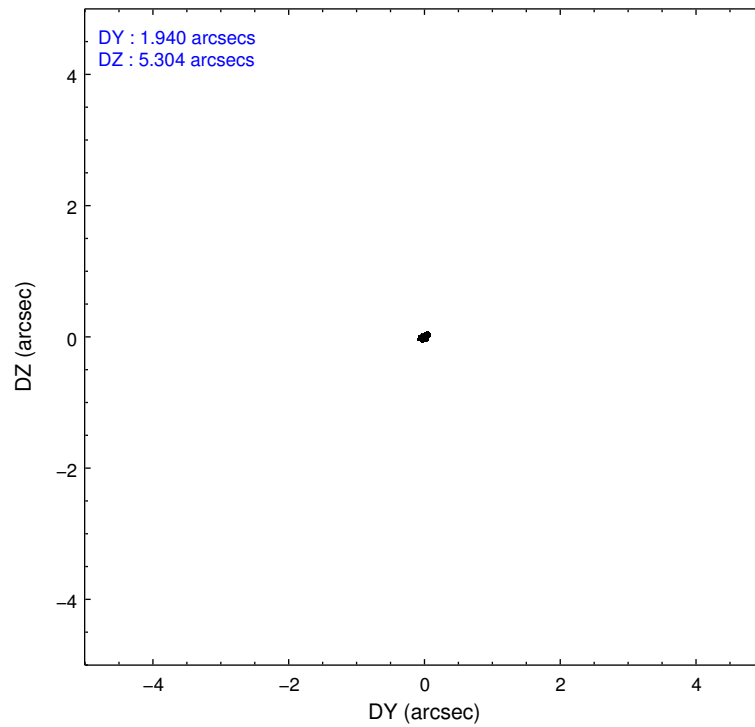
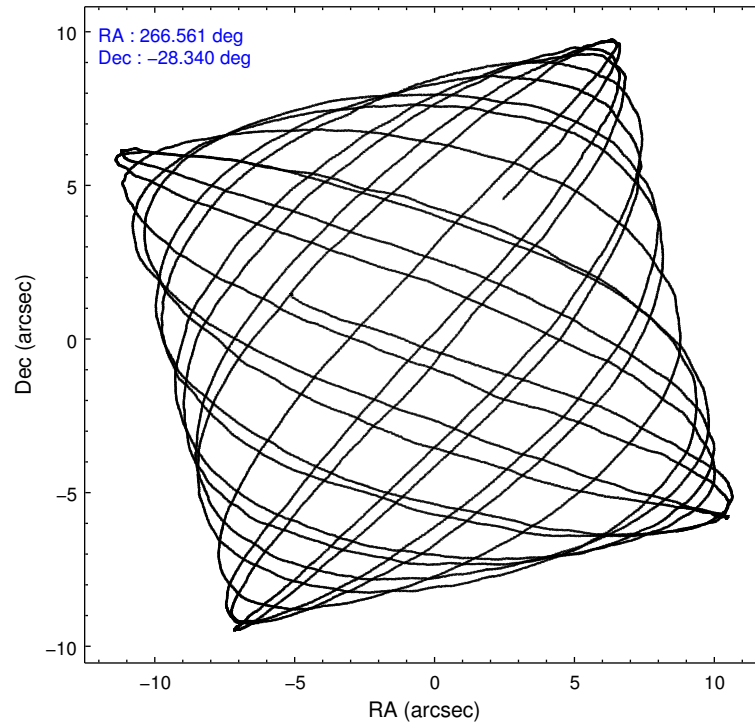
2.1.4 Events

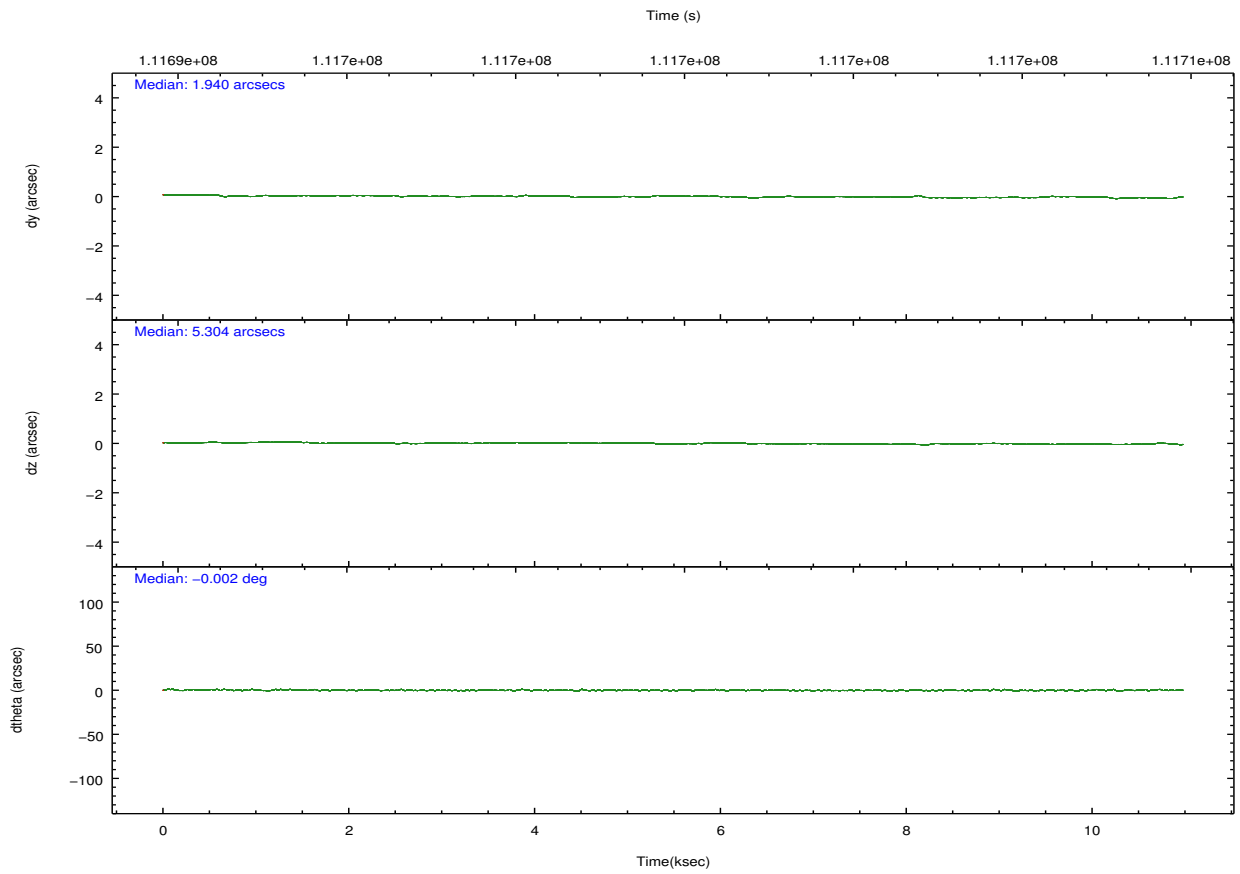
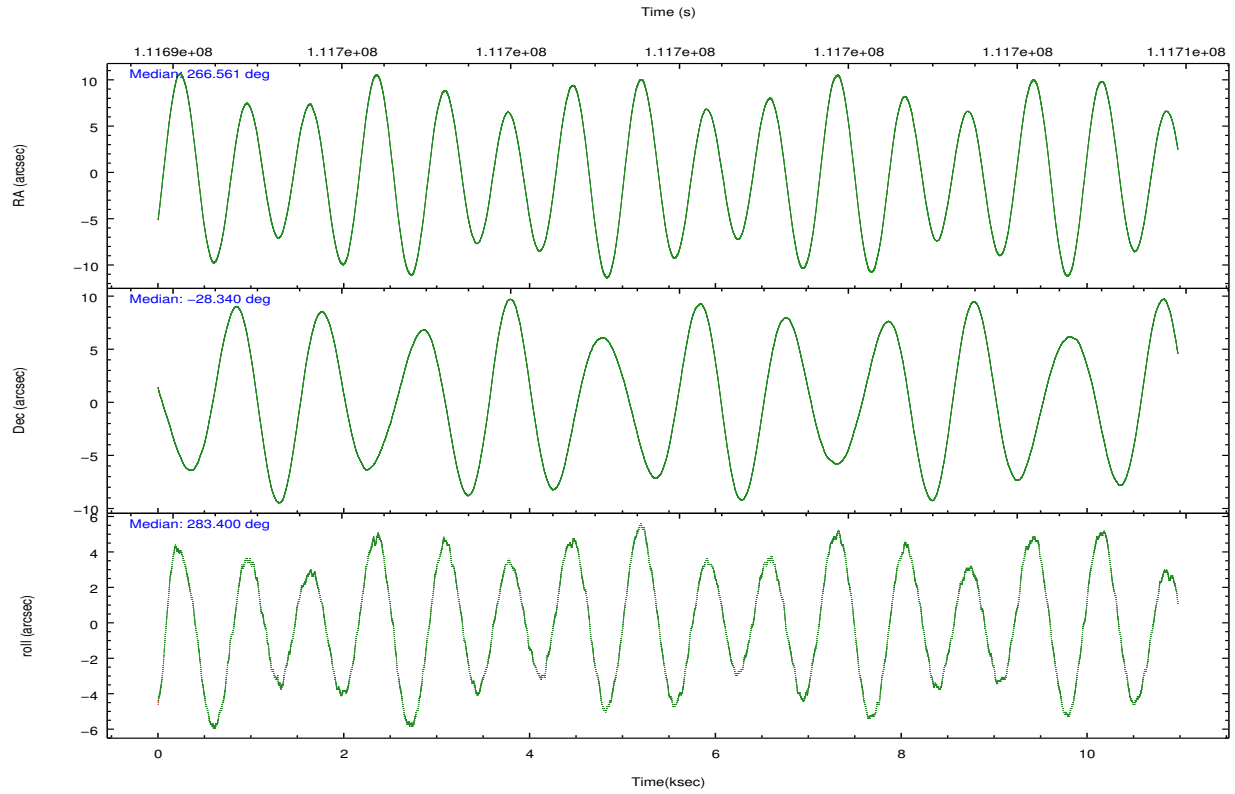
	ccd 0	ccd 1	ccd 2	ccd 3	ccd 6	ccd 7		ccd 0	ccd 1	ccd 2	ccd 3	ccd 6	ccd 7
level 1 events	26695	26446	29576	28892	28318	35141	grade 0 events	2872	3028	2993	2799	2458	1943
rejected events	21034	20487	23948	23280	22889	16189		10%	11%	10%	9%	8%	5%
rejected %	78%	77%	80%	80%	80%	46%	grade 1 events	21	37	22	24	24	36
								0%	0%	0%	0%	0%	0%
							grade 2 events	1072	1056	1045	1054	1051	3903
								4%	3%	3%	3%	3%	11%
							grade 3 events	454	476	423	444	462	1732
								1%	1%	1%	1%	1%	4%
							grade 4 events	439	471	396	446	495	1774
								1%	1%	1%	1%	1%	5%
							grade 5 events	1087	1167	983	1189	1275	3978
								4%	4%	3%	4%	4%	11%
							grade 6 events	826	928	774	872	964	9606
								3%	3%	2%	3%	3%	27%
							grade 7 events	19924	19283	22940	22064	21589	12169
								74%	72%	77%	76%	76%	34%

2.2 Compared Parameters

Parameter	Planned	Actual	Parameter	Planned	Actual
Instrument	ACIS	ACIS	Obspar format version number	7	7
Detector	ACIS-012367	ACIS-012367	Obspar file type	PREDICTED	ACTUAL
Grating	NONE	NONE	Obspar update status	NONE	UPDATED
Data mode	FAINT	FAINT	Number of optional ACIS chips dropped	0	0
Observation mode	POINTING	POINTING	On-chip summing requested	N	N
[deg] Pointing RA	266.539860	266.5613610513149	Subarray requested	NONE	NONE
[deg] Pointing Dec	-28.319946	-28.33985821170953	Alternating exposures requested	N	N
[deg] Pointing Roll	283.188404	283.4072956744394	[s] Primary exposure time	0.000000	3.2
[deg] Roll angle	283.200000	283.200000			
[deg] Roll tolerance	2.000000	2.000000			
Roll constraint allows 180D rotation	N	N			
[mm] SIM focus pos	-0.782348	-0.7809083437167272			
[mm] SIM defocus	0	0.001439871863259334			
[mm] SIM translation stage pos	-233.592463	-233.5874344608287			
[mm] SIM translation stage offset	0	-0.005018542100998502			
[s] Observation start time (MET)	111694572.184000	111694195.5099			
Observation start date	2001-07-16T18:15:08	2001-07-16T18:09:55			
[s] Observation end time (MET)	111705354.184000	111705668.84785			
Observation end date	2001-07-16T21:14:50	2001-07-16T21:21:08			
Read mode	TIMED	TIMED			

2.3 Aspect





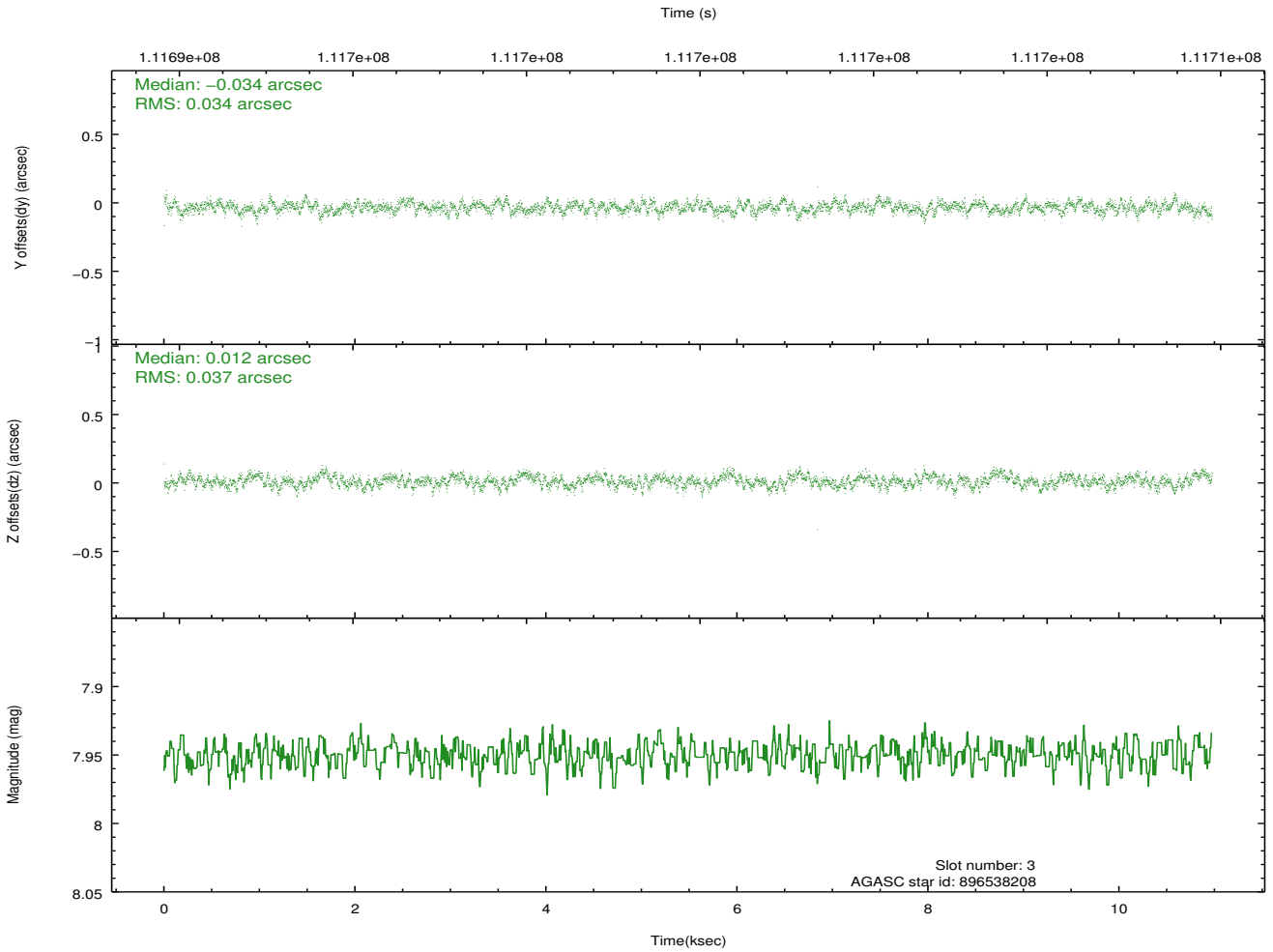
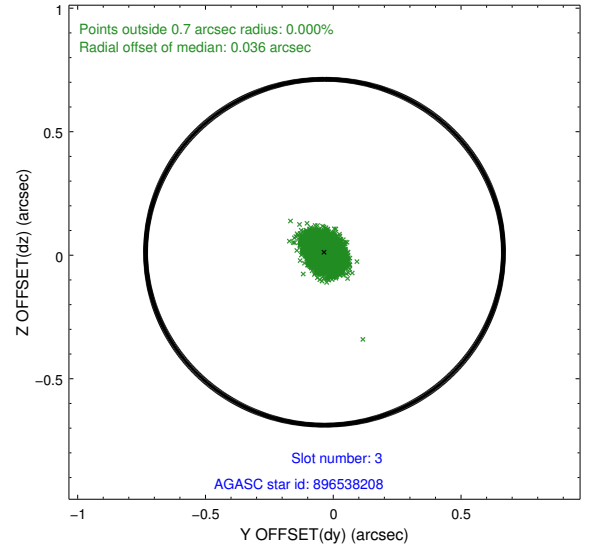
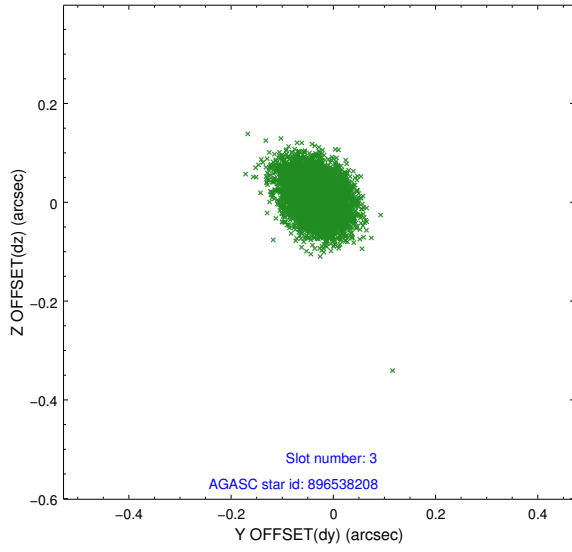
Slot Statistics

slot	status	id	mag	n_pts	med_dy	med_dz	dr1	dr2	ra	dec	mean_y	mean_z
0	FID	ACIS-I-1	7.26	2678	-0.034	0.036	0.006	0.011	0.000000	0.000000	937.85	-828.61
1	FID	ACIS-I-5	7.24	2678	-0.034	0.022	0.006	0.010	0.000000	0.000000	-1810.00	1068.62
2	FID	ACIS-I-6	7.27	2678	-0.023	0.012	0.007	0.012	0.000000	0.000000	402.89	1713.65
3	GUIDE	896538208	7.95	5355	-0.034	0.012	0.053	0.086	267.176969	-28.671626	1698.05	1668.98
4	GUIDE	896537176	8.02	5353	0.087	-0.028	0.050	0.082	266.498272	-28.678259	1227.71	-422.26
5	GUIDE	896011040	7.71	5355	-0.040	-0.024	0.048	0.077	267.058469	-28.014759	-688.98	1853.95
6	GUIDE	896538248	8.90	5355	0.106	0.039	0.067	0.108	266.238138	-28.240101	-495.65	-866.54
7	GUIDE	895877624	8.40	5351	-0.117	0.003	0.059	0.097	265.811835	-28.076955	-1371.24	-2054.32

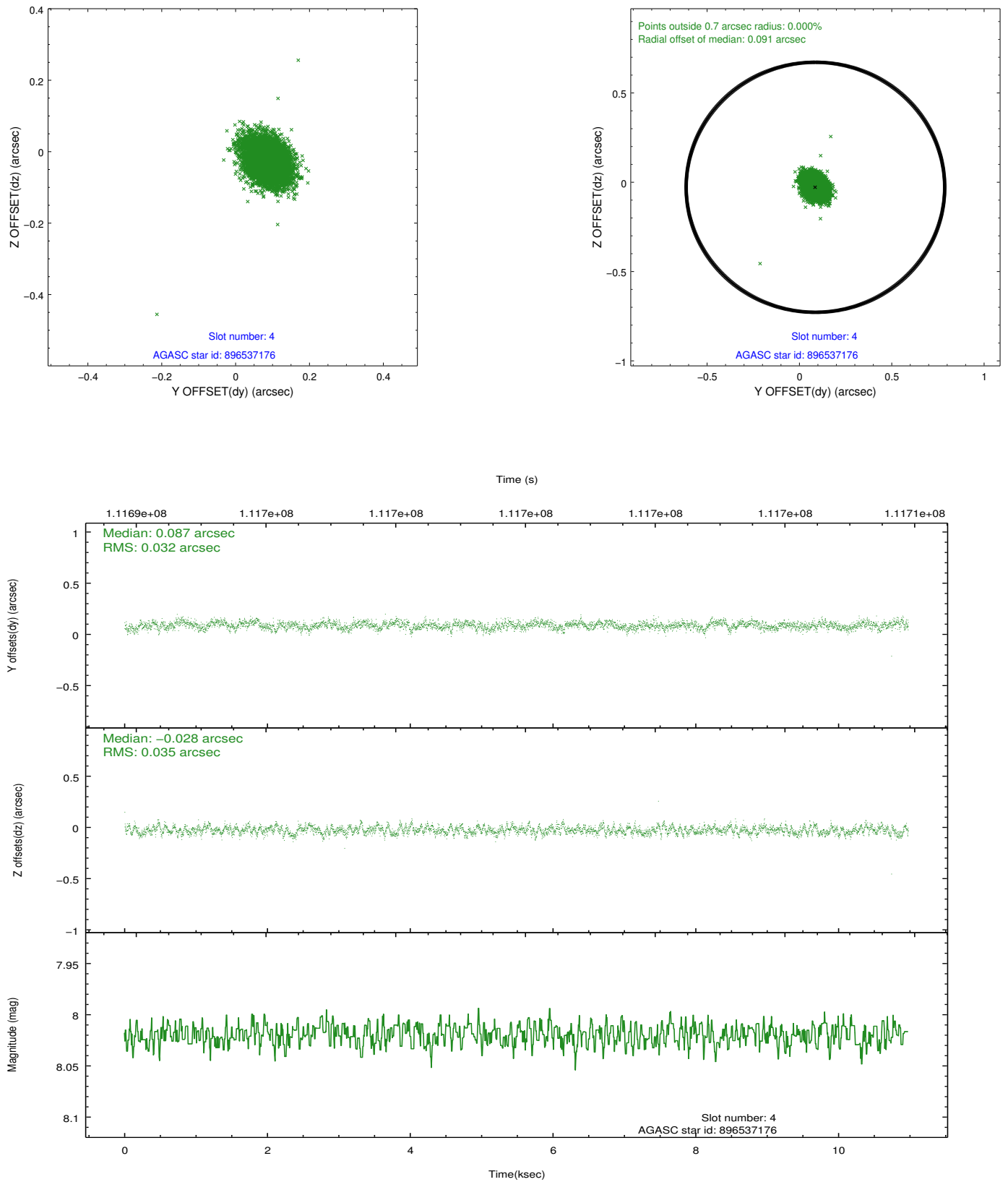
∞

2.4 Star Slots

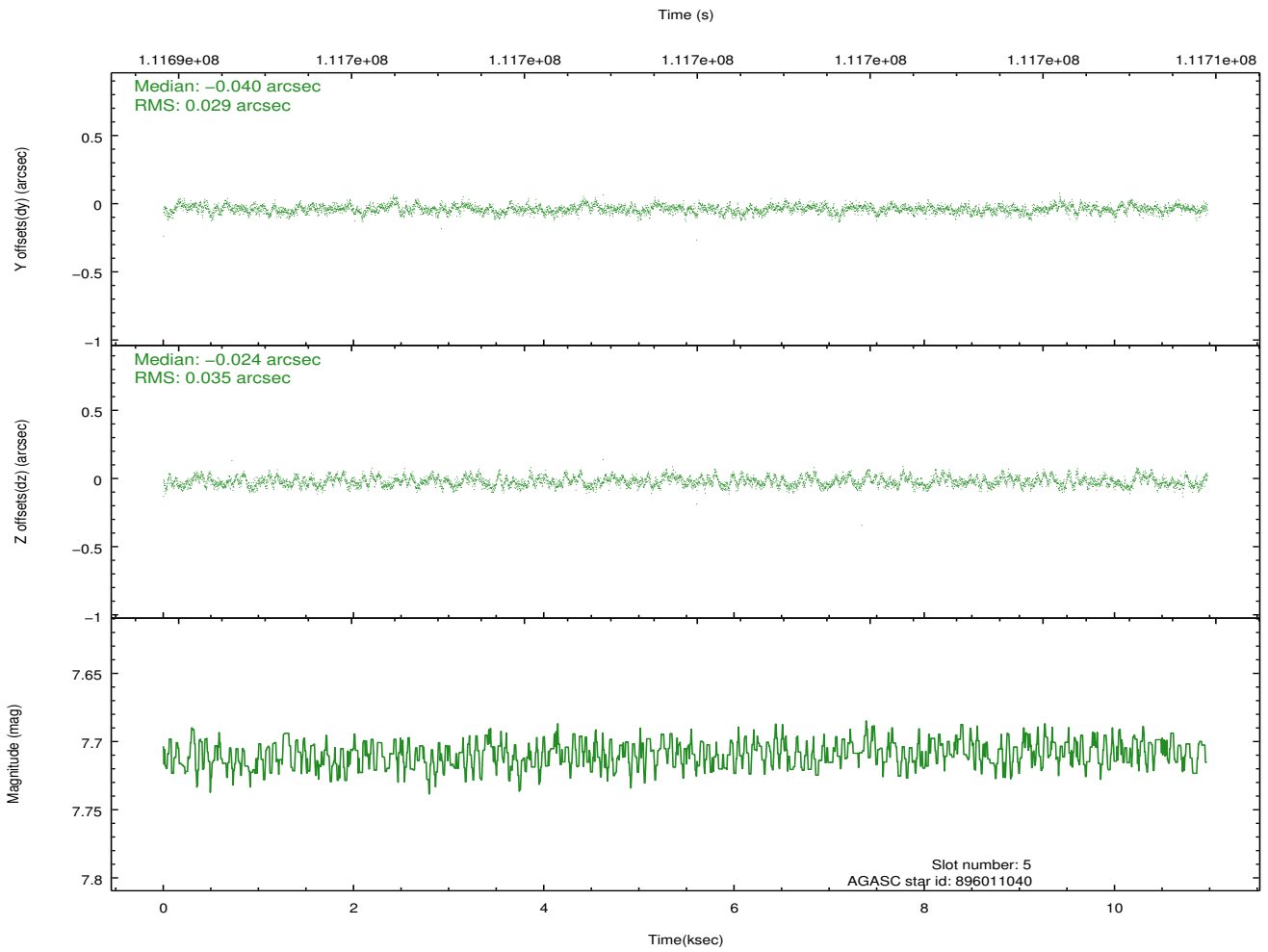
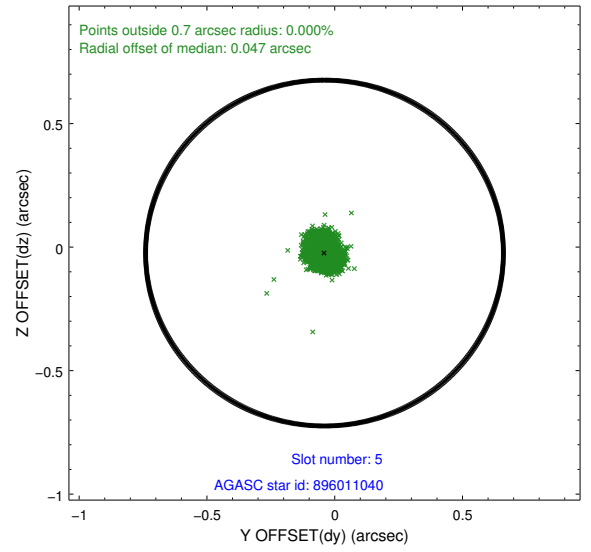
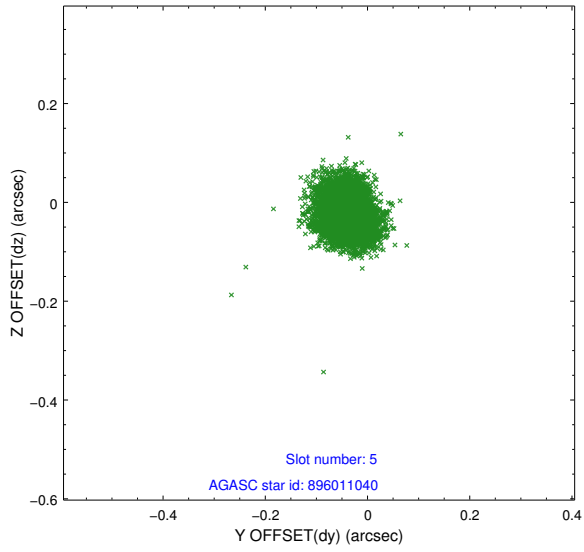
2.4.1 Slot 3



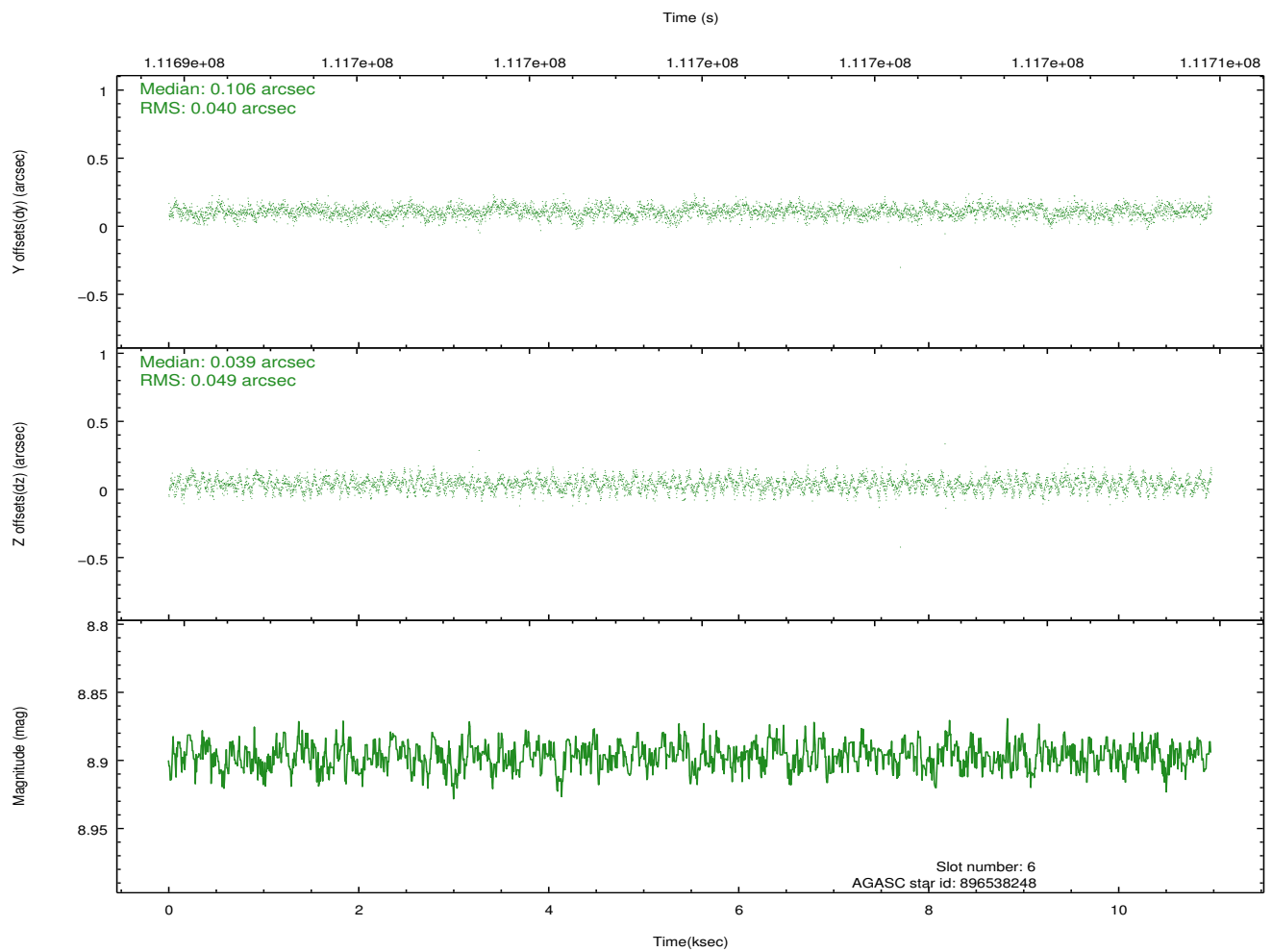
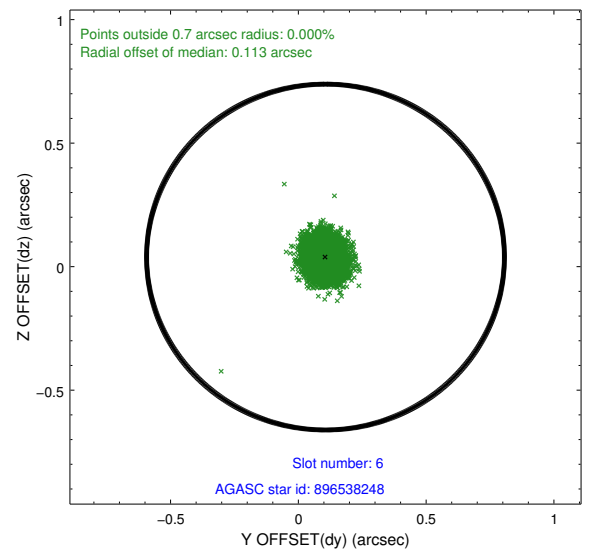
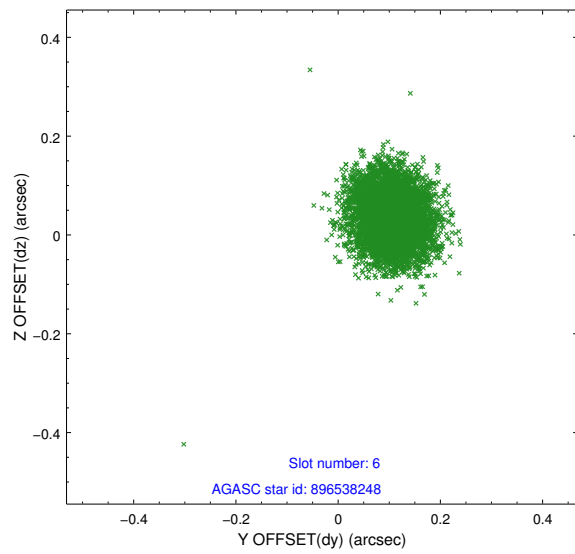
2.4.2 Slot 4



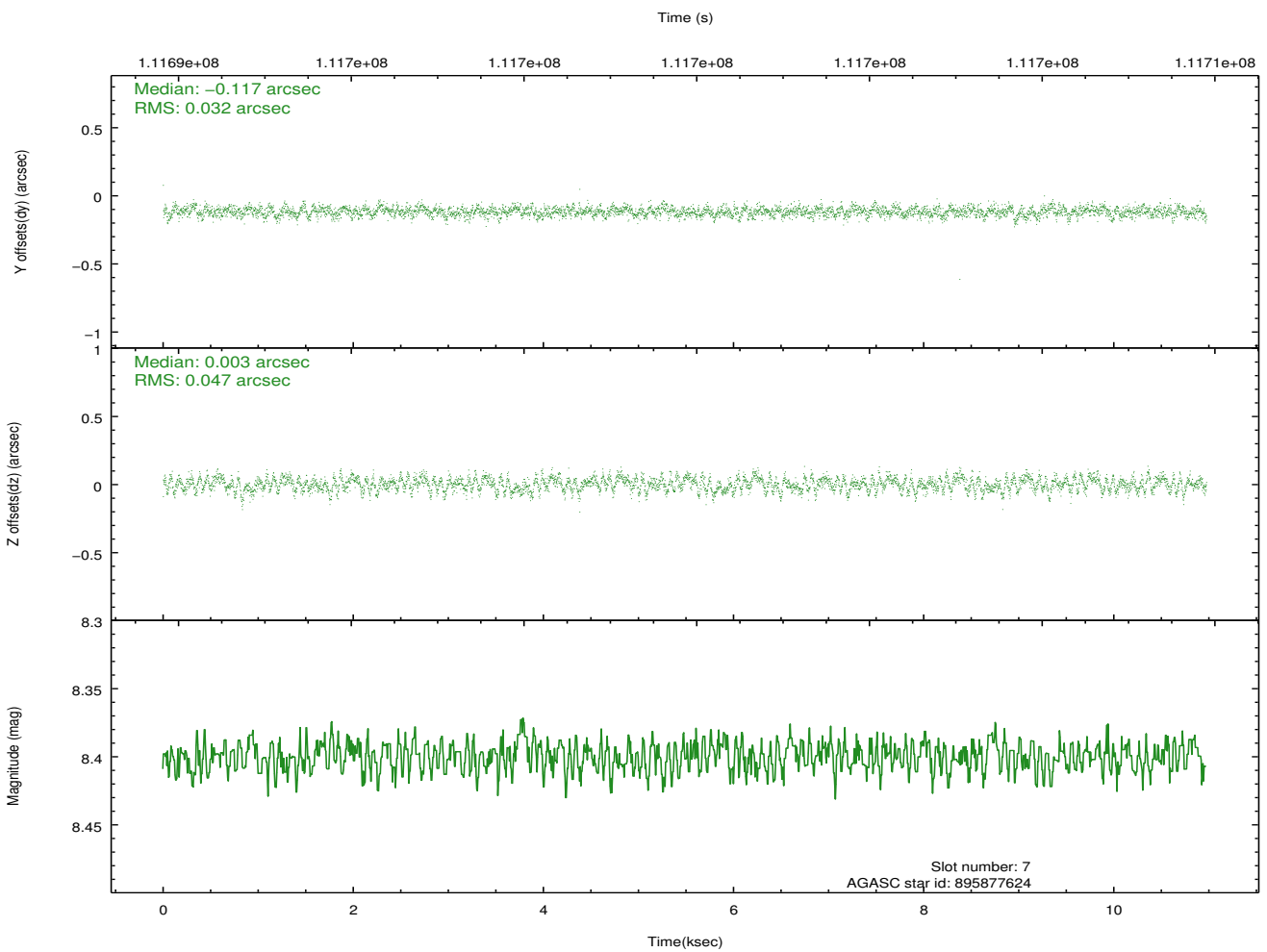
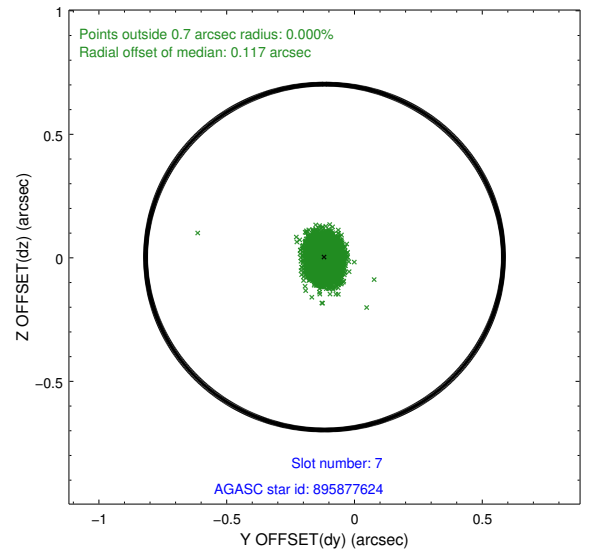
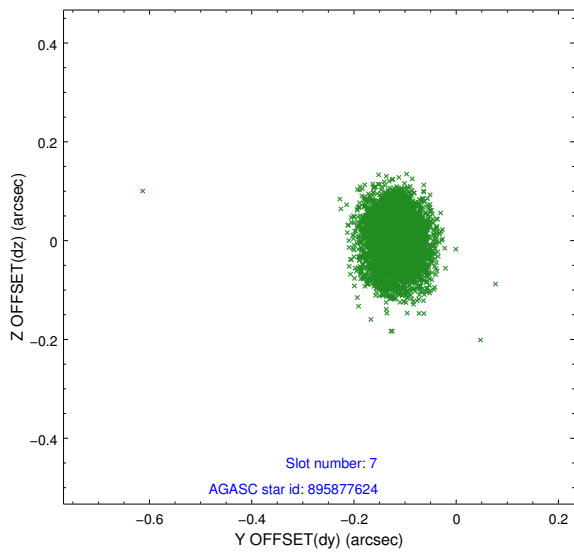
2.4.3 Slot 5



2.4.4 Slot 6

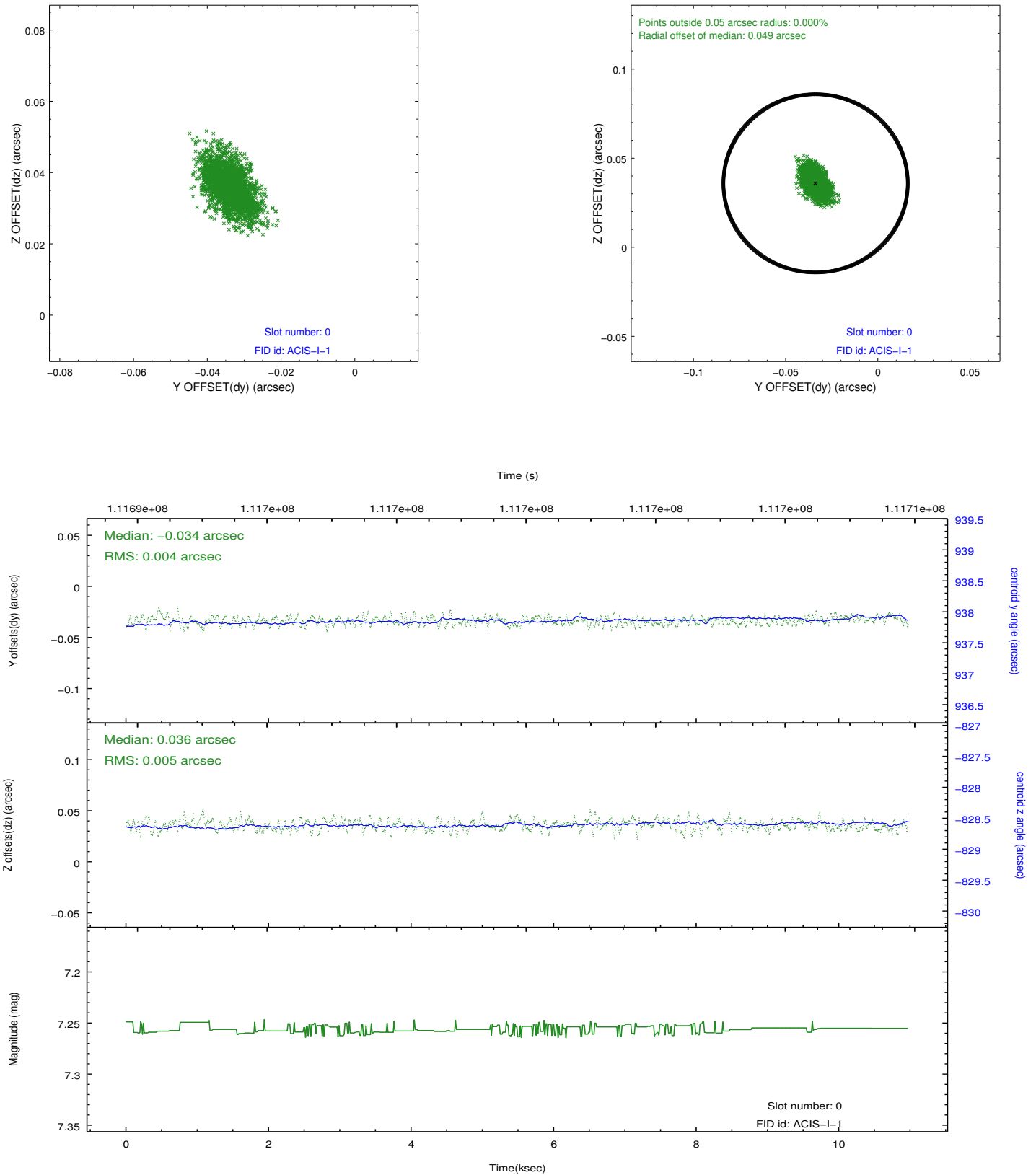


2.4.5 Slot 7

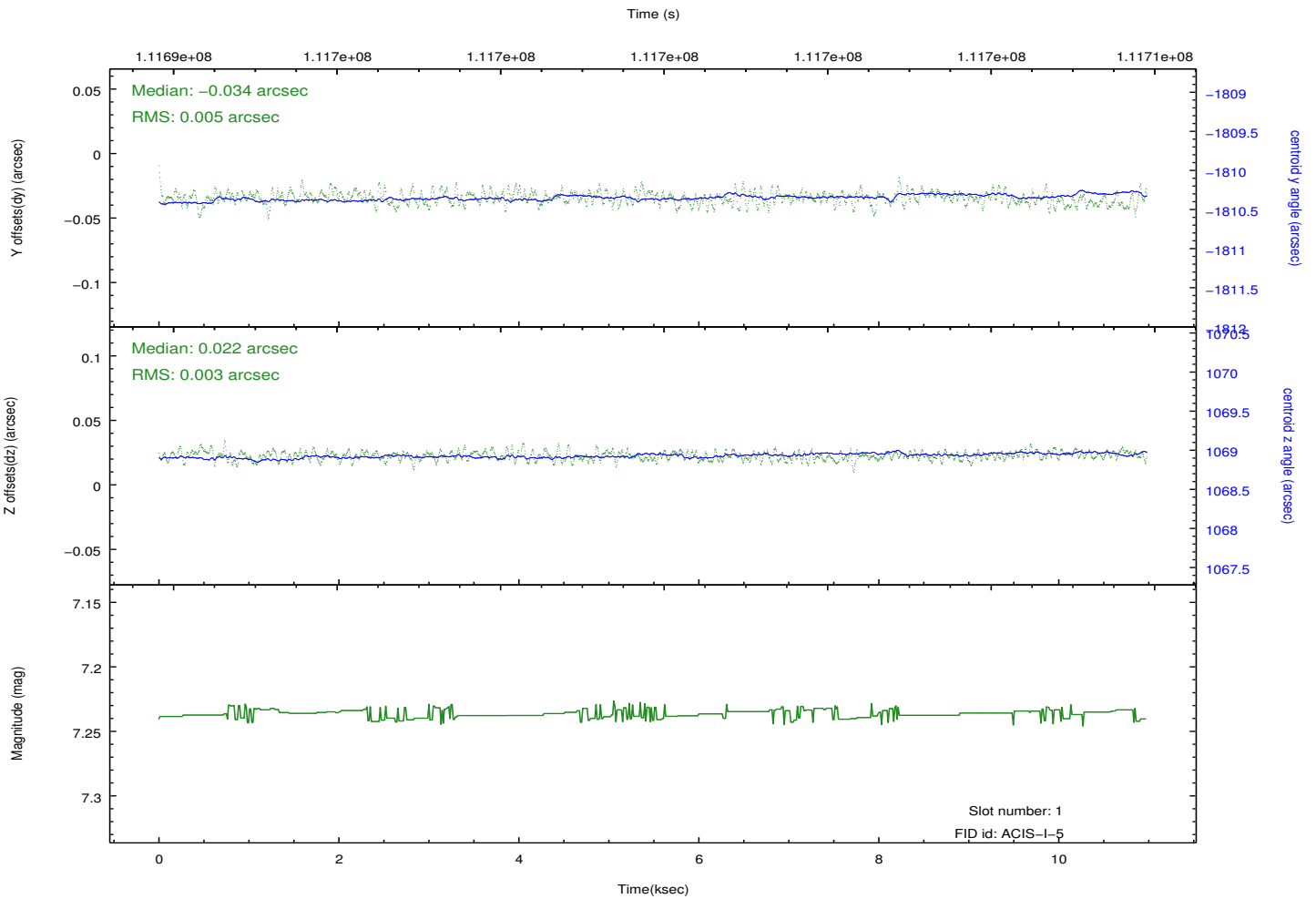
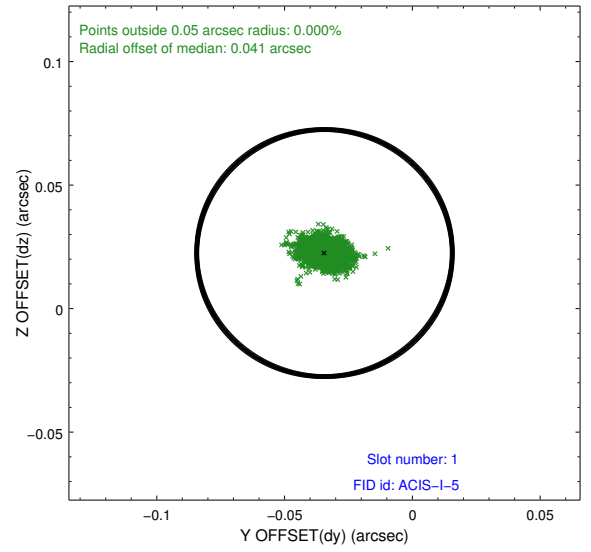
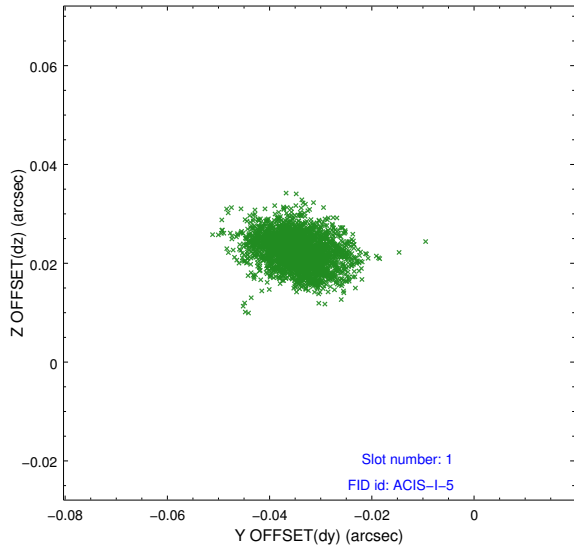


2.5 FID Slots

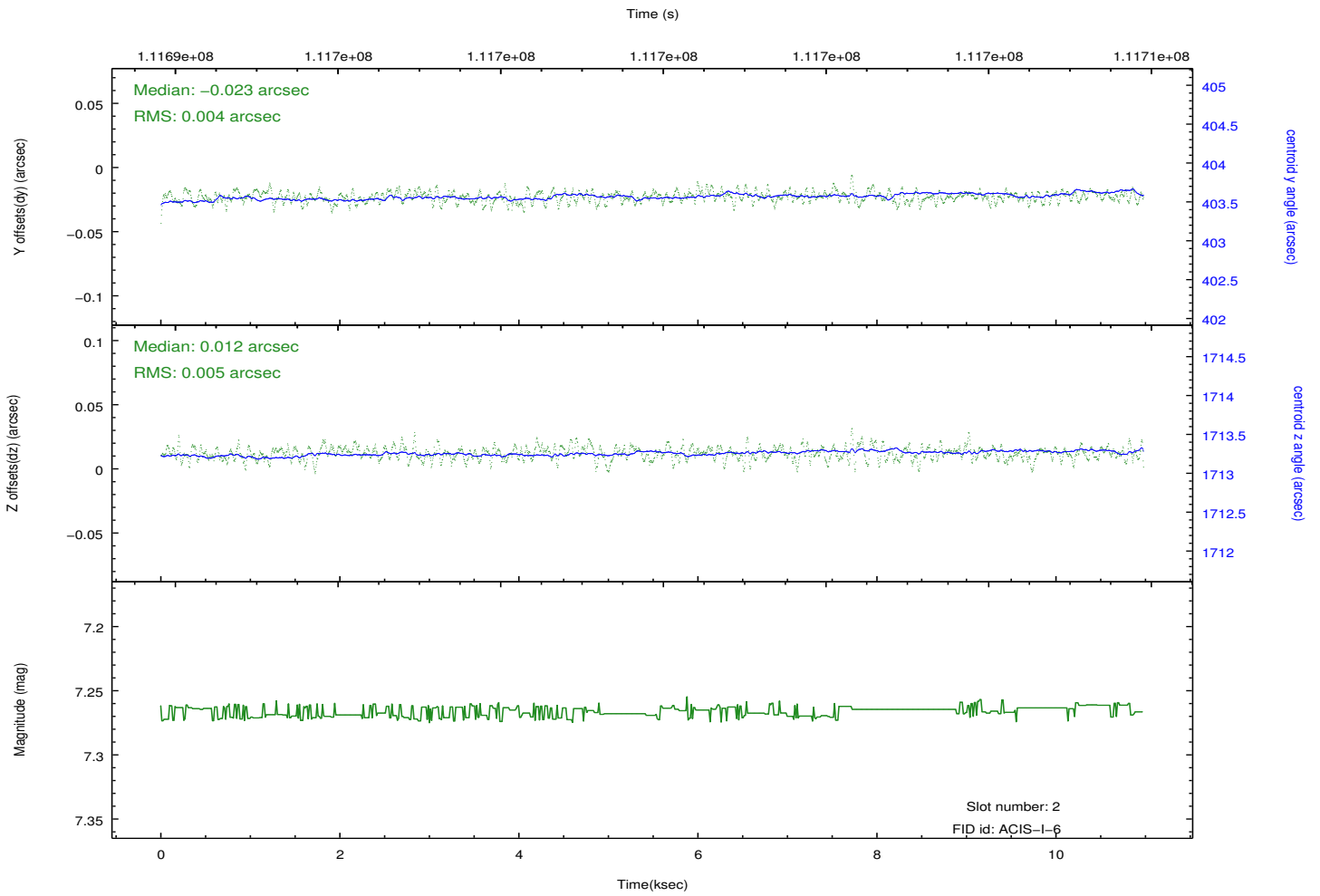
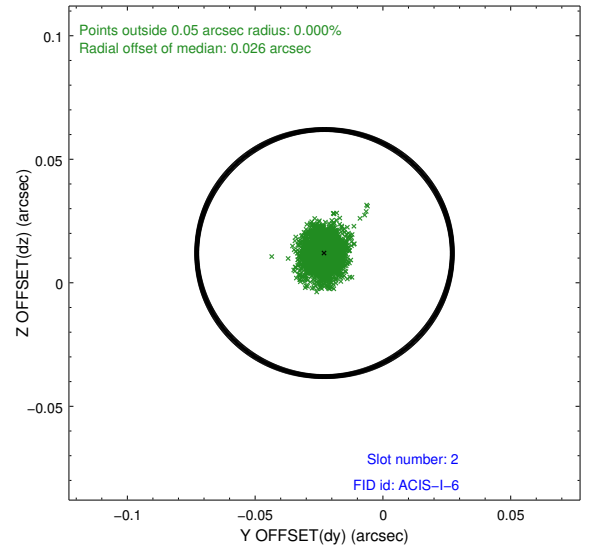
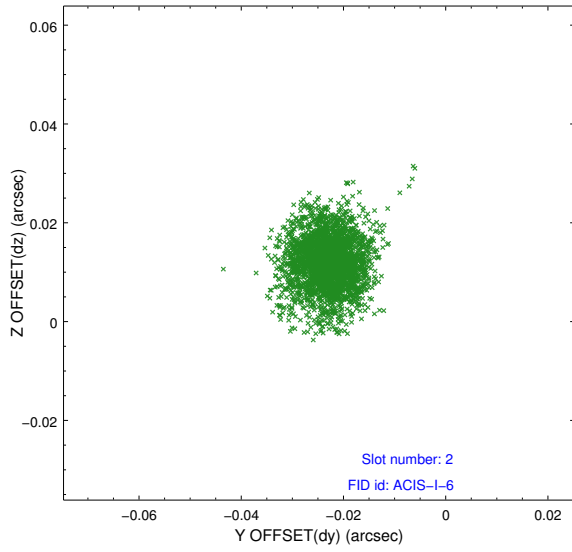
2.5.1 Slot 0



2.5.2 Slot 1



2.5.3 Slot 2



A Summary

A.1 Status

V&V Scientist	Jen Lauer
V&V Date (YYYY-MM-DD)	2012.09.24
V&V Edition	1
V&V Disposition and Status	OK
V&V Charge Time	10.544

A.2 Comments

Roll constraint met.