

V&V Reference Report

L2 ASCDS Version : 8.4.5

Observation 2585 - L2 Version 3
Chandra X-Ray Center

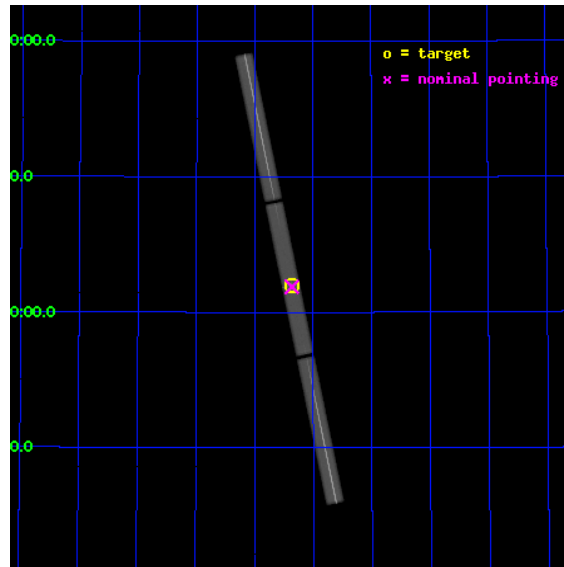
L2 Processing Date : Oct 12 2012

Contents

1	Front	2
2	OBI	3
2.1	OBI	3
2.1.1	Images	3
2.1.2	Parameters	4
2.1.3	Events	4
2.2	Compared Parameters	5
2.3	Aspect	6
2.4	Star Slots	9
2.4.1	Slot 3	9
2.4.2	Slot 4	10
2.4.3	Slot 5	11
2.4.4	Slot 6	12
2.4.5	Slot 7	13
2.5	FID Slots	14
2.5.1	Slot 0	14
2.5.2	Slot 1	15
2.5.3	Slot 2	16
3	Gratings	17
3.1	LETG Arm	17
A	Summary	19
A.1	Status	19
A.2	Comments	19

1 Front

seq_num	290141	Sequence number
obs_id	2585	Observation id
title	AO3 CALIBRATION OBSERVATIONS OF HZ43	Proposal title
observer	Dr. CXC Calibration	Principal investigator
object	HZ43	Source name
ra_targ	199.092083	Observer's specified target RA [deg]
dec_targ	29.099	Observer's specified target Dec [deg]
ra_nom	199.09081144751	Nominal RA [deg]
dec_nom	29.094480721695	Nominal Dec [deg]
roll_nom	258.23305731771	Nominal Roll [deg]
revision	3	Processing version of data
ontime	20179.175829589	[s]
livetime	19989.372794171	Ontime multiplied by DTCOR
l2events	1854840	Number of level 2 events

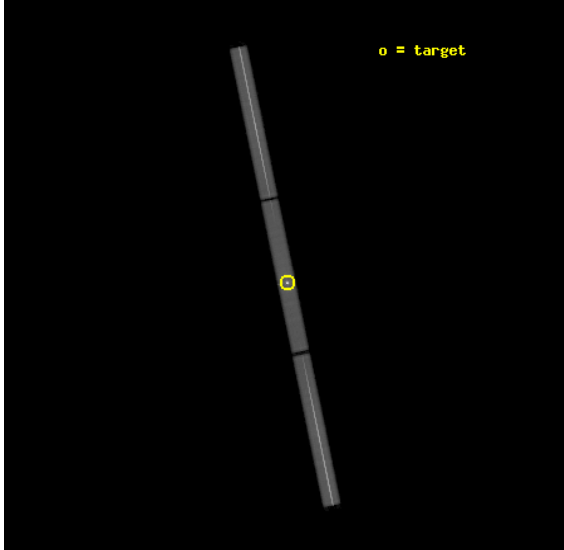


2 OBI

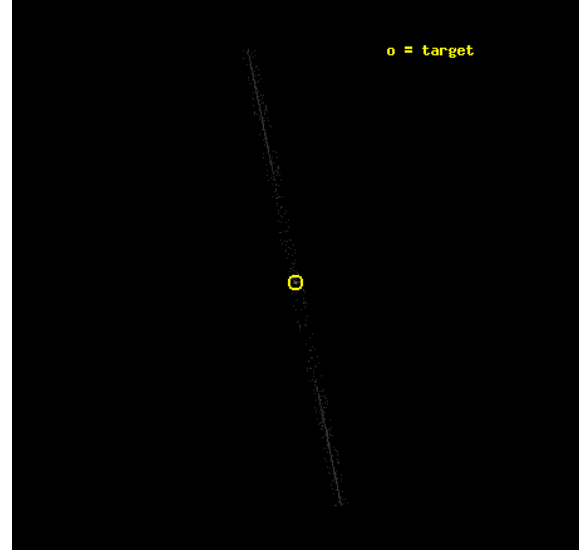
2.1 OBI

2.1.1 Images

Level 1 Image



Level 1 Bad Events



2.1.2 Parameters

obi_num	0	Obi number	sched_exp_time	20000.000000	[s] Scheduled observation exposure time
ascdsver	8.4.5	Processing system revision	ontime	20179.175829589	[s]
caldbver	4.5.2	 	l1events	2371279	Number of level 1 events
date	2012-10-11T20:24:29	Date and time of file creation			
revision	3	Processing version of data			

2.1.3 Events

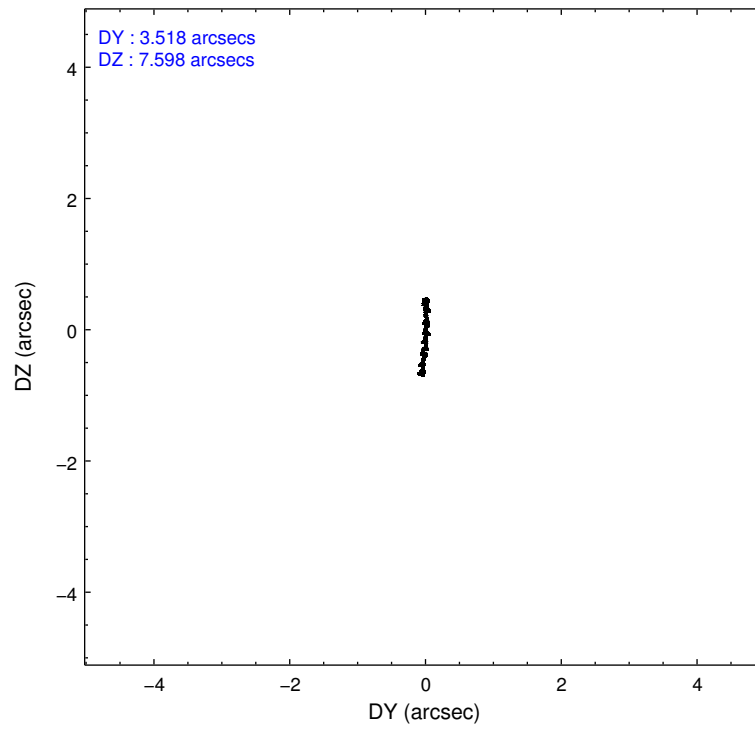
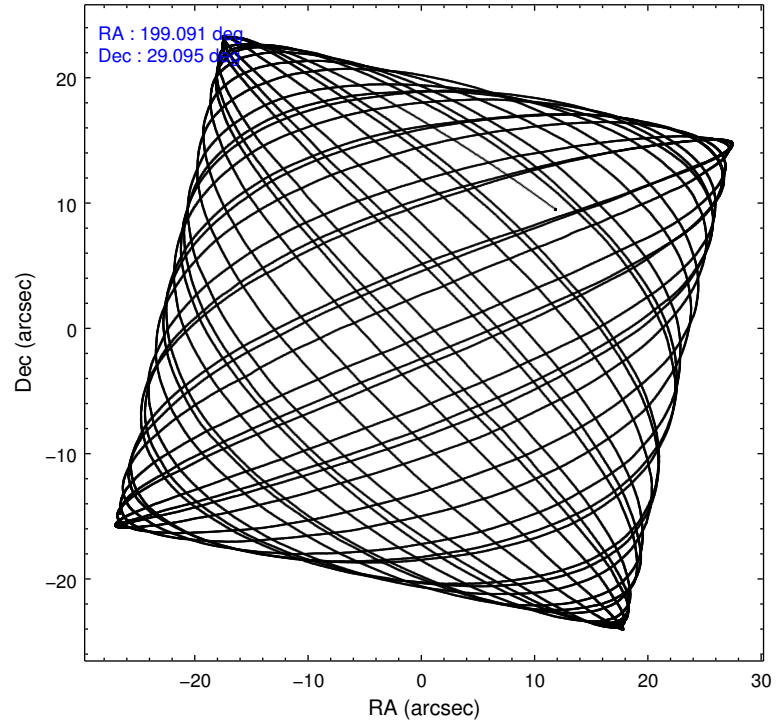
Level 1 Events

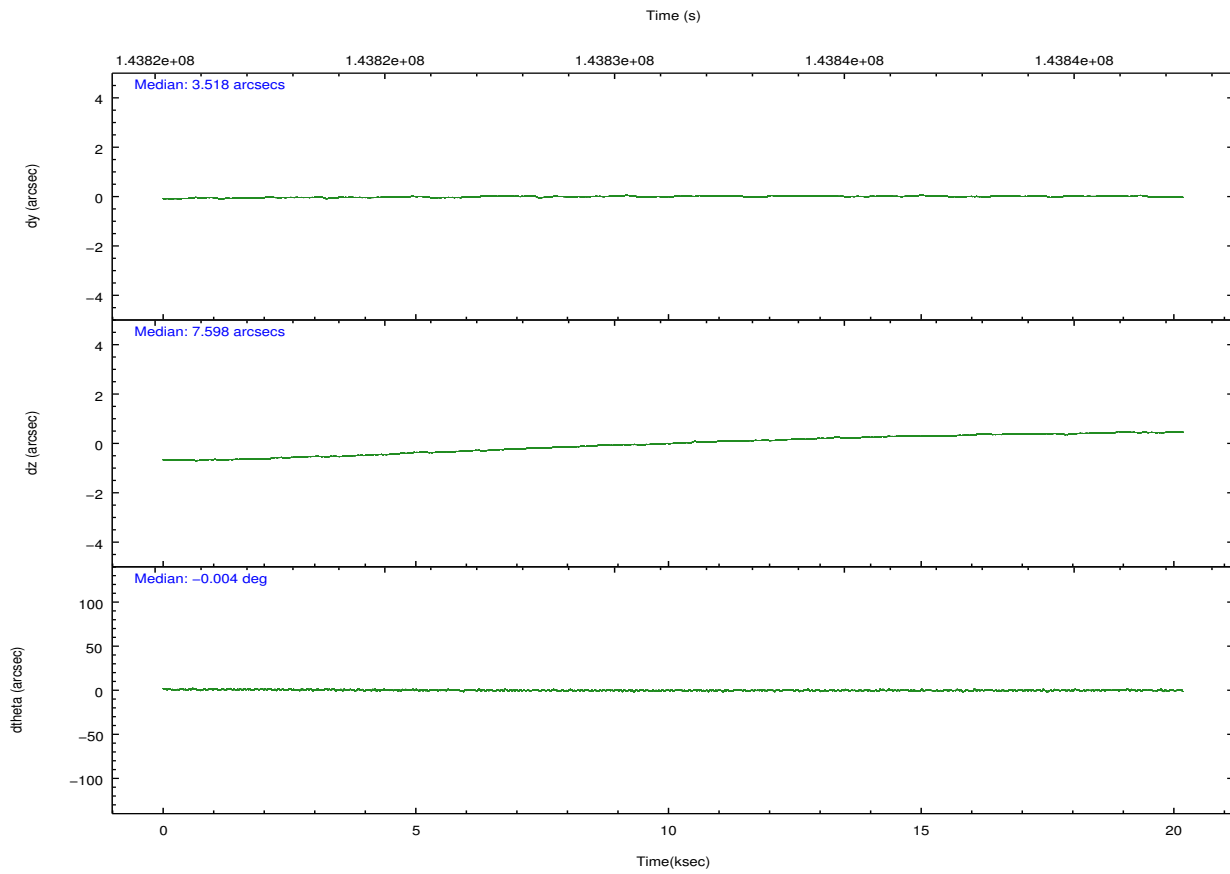
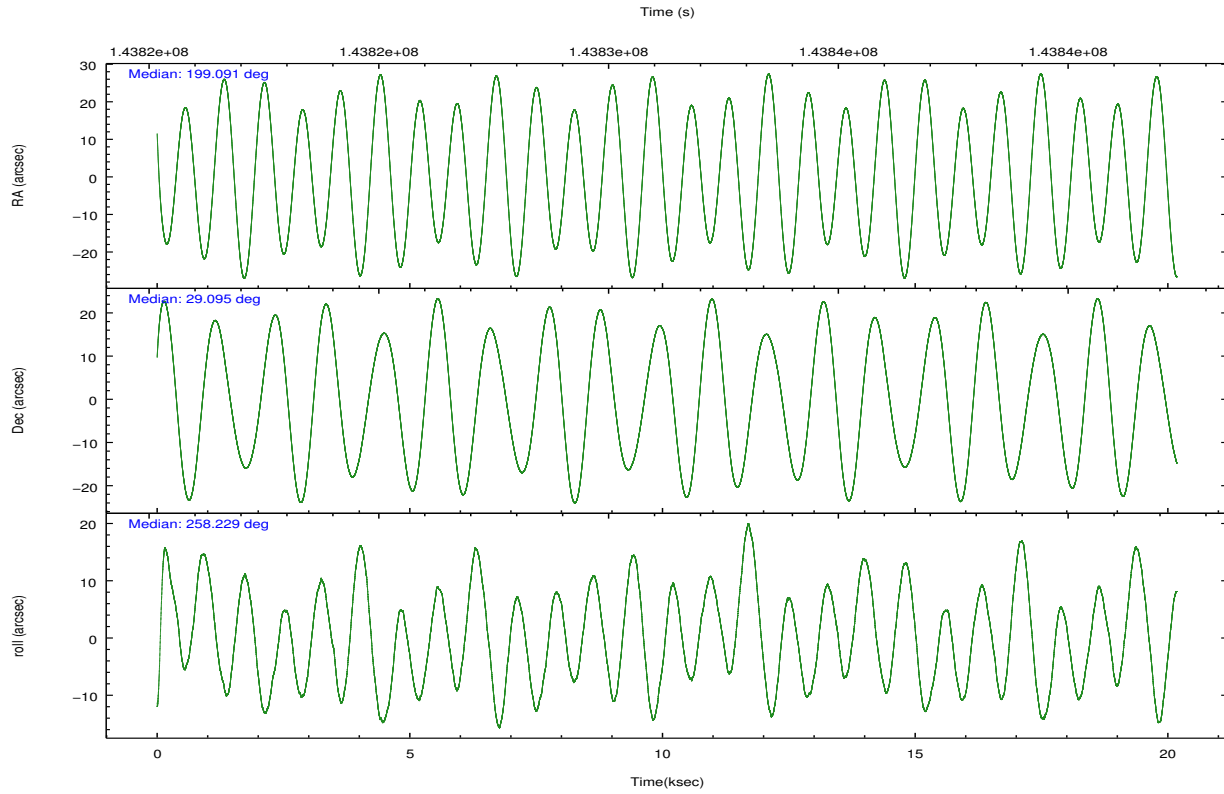
	segment 1	segment 2	segment 3
level 1 events	821705	711077	838497
rejected events	33231	31901	33789
rejected %	4%	4%	4%

2.2 Compared Parameters

Parameter	Planned	Actual	Parameter	Planned	Actual
Instrument	HRC	HRC	Obspar format version number	7	7
Detector	HRC-S	HRC-S	Obspar file type	PREDICTED	ACTUAL
Grating	LETG	LETG	Obspar update status	NONE	UPDATED
Data mode	OBSERVING	OBSERVING			
Observation mode	POINTING	POINTING			
[deg] Pointing RA	199.079066	199.09081144751			
[deg] Pointing Dec	29.121132	29.09448072169539			
[deg] Pointing Roll	258.171442	258.2330573177134			
[s] Window start time (MET)	139276864.184000	139276864.184000			
[s] Window stop time (MET)	144460864.184000	144460864.184000			
[mm] SIM focus pos	-1.429586	-1.428180813131781			
[mm] SIM defocus	0.1037507710433287	0.1051558262725154			
[mm] SIM translation stage pos	250.455976	250.466033080201			
[mm] SIM translation stage offset	0	-0.01005468664627074			
[s] Observation start time (MET)	143821364.184000	143820098.37659			
Observation start date	2002-07-23T14:21:40	2002-07-23T14:01:38			
[s] Observation end time (MET)	143841364.184000	143841534.20247			
Observation end date	2002-07-23T19:55:00	2002-07-23T19:58:54			

2.3 Aspect



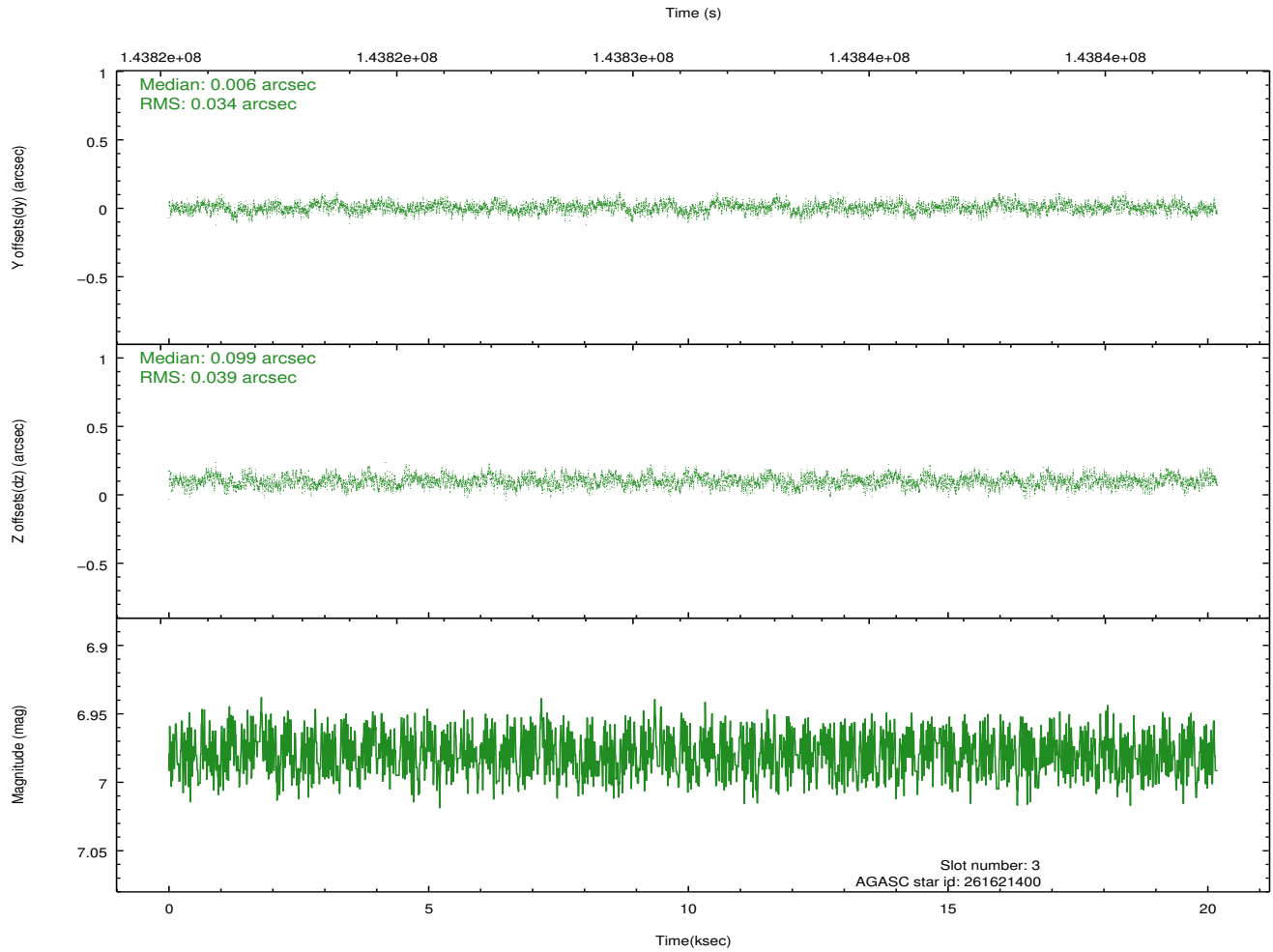
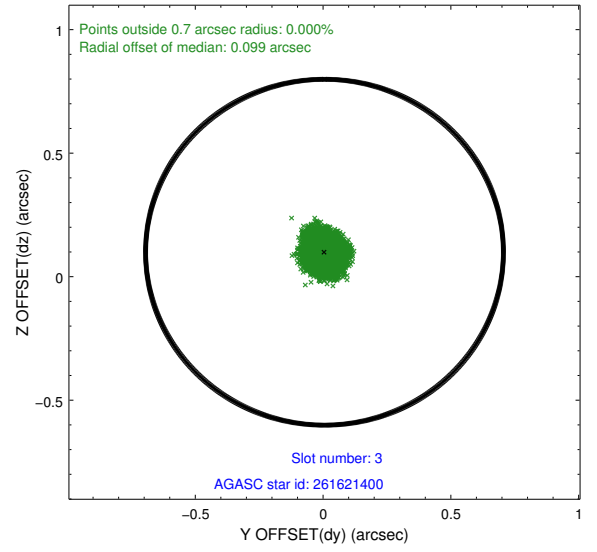
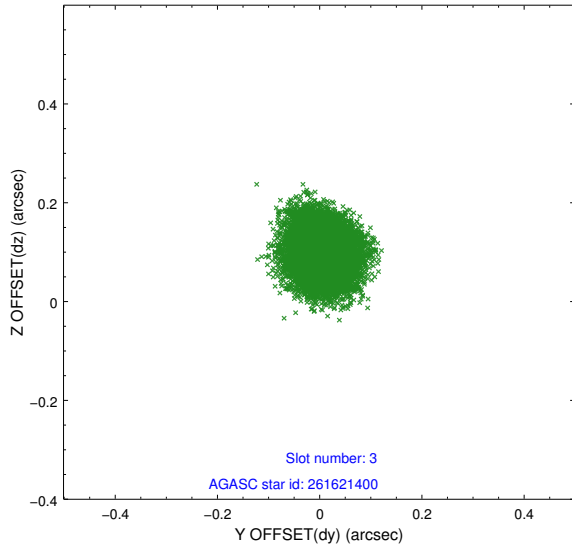


Slot Statistics

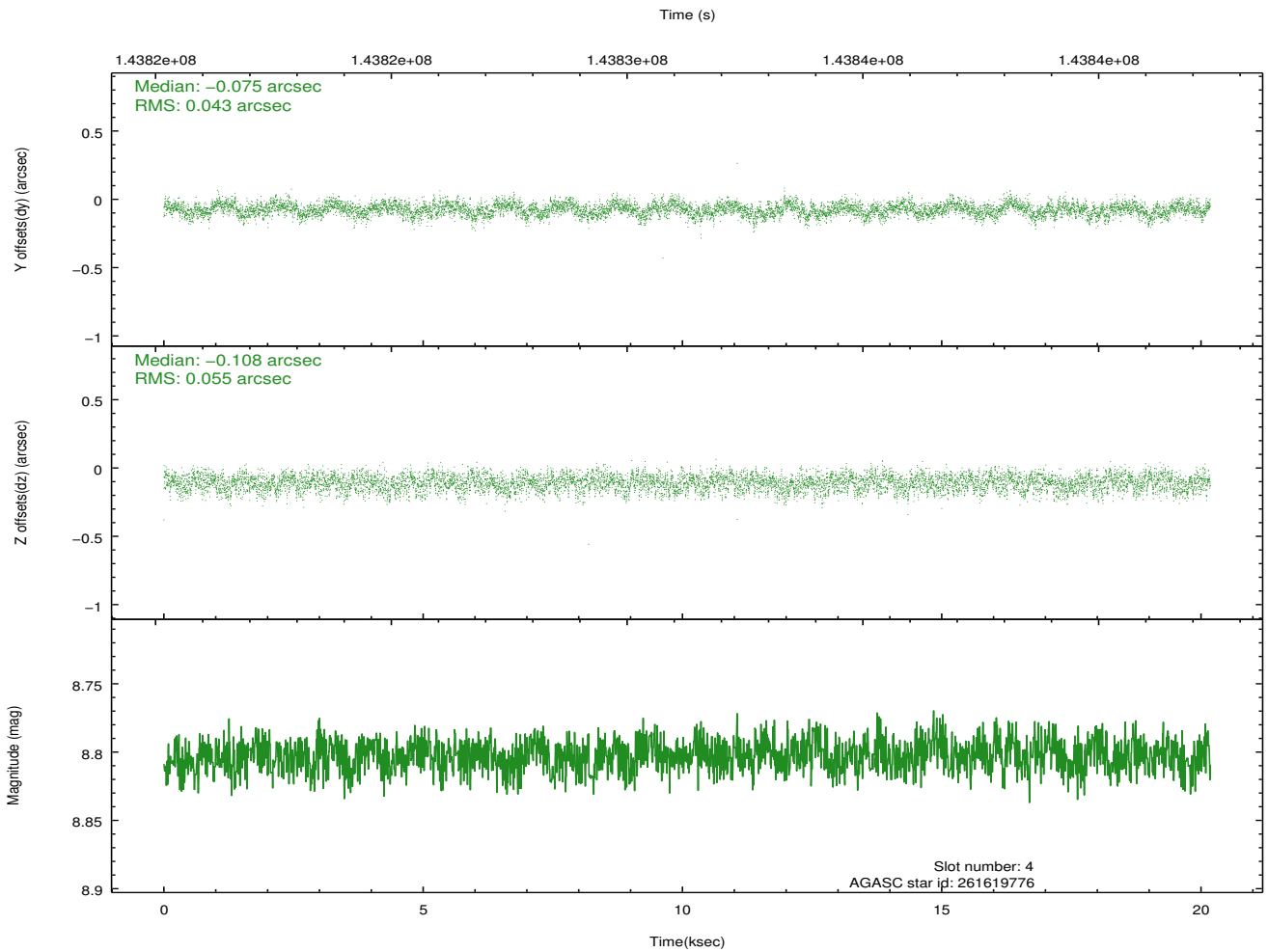
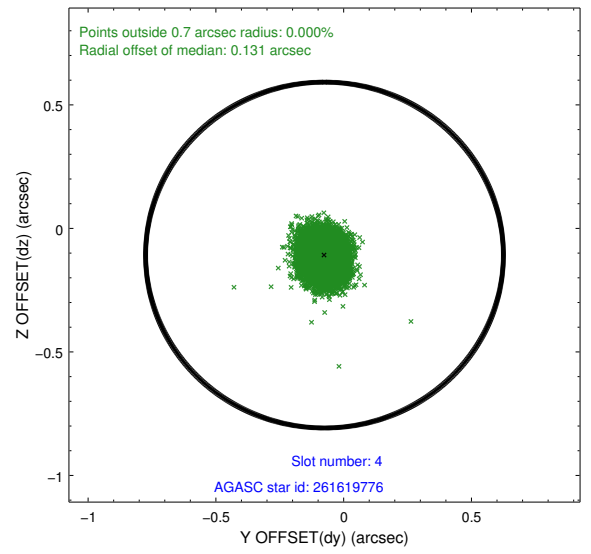
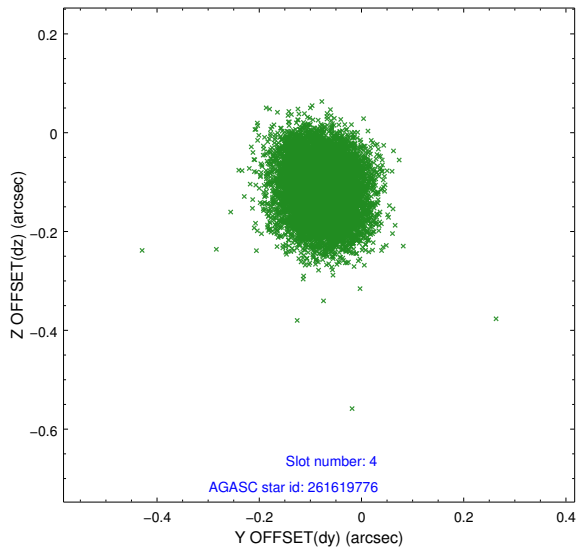
slot	status	id	mag	n_pts	med_dy	med_dz	dr1	dr2	ra	dec	mean_y	mean_z
0	FID	HRC-S-1	6.98	4922	0.151	-0.094	0.007	0.013	0.000000	0.000000	-1157.54	-456.10
1	FID	HRC-S-2	6.98	4922	0.077	-0.087	0.006	0.012	0.000000	0.000000	1241.83	-448.80
2	FID	HRC-S-3	7.00	4922	0.162	-0.121	0.008	0.017	0.000000	0.000000	-1160.01	573.31
3	GUIDE	261621400	6.98	9844	0.006	0.099	0.055	0.088	198.901600	28.741982	1450.78	-267.76
4	GUIDE	261619776	8.80	9840	-0.075	-0.108	0.075	0.119	198.654383	29.401174	-715.46	-1510.15
5	GUIDE	261619992	9.33	9841	0.102	-0.031	0.100	0.163	198.395553	28.647634	2105.52	-1764.84
6	GUIDE	261623040	9.12	9844	-0.139	-0.026	0.082	0.139	198.792686	29.757643	-2059.87	-1345.64
7	GUIDE	261623624	9.13	9818	0.108	0.070	0.082	0.131	199.611555	28.454113	2001.28	2141.92

2.4 Star Slots

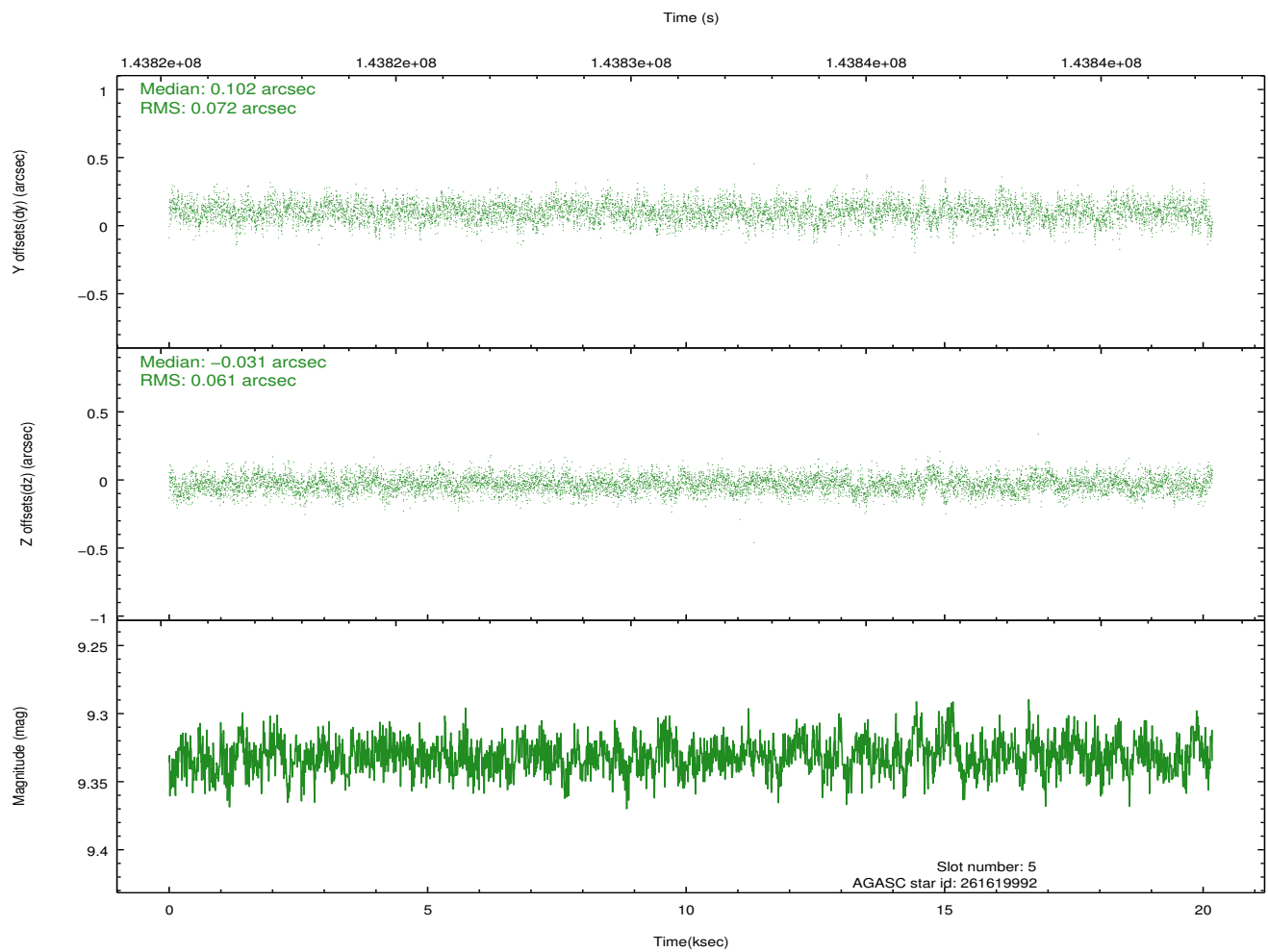
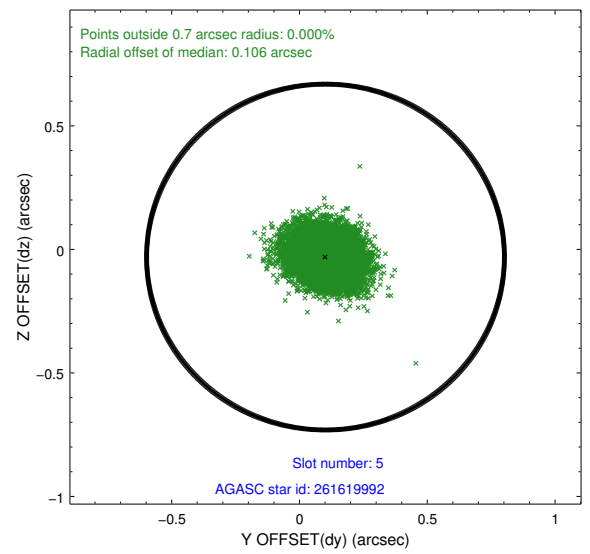
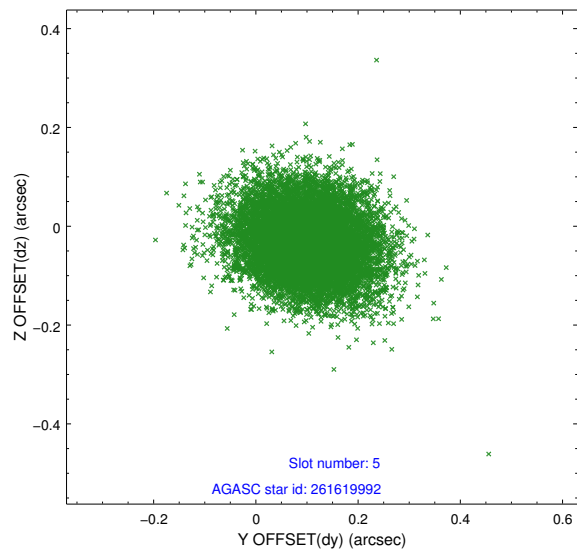
2.4.1 Slot 3



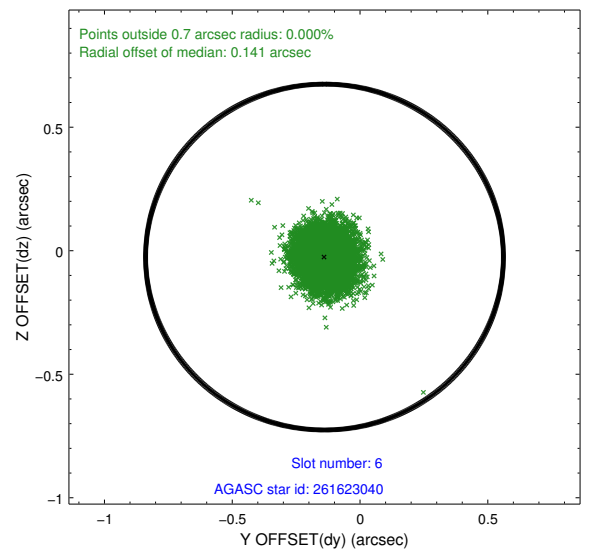
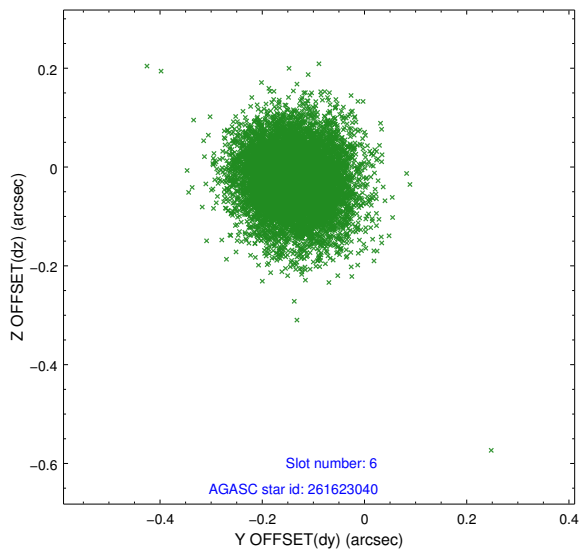
2.4.2 Slot 4



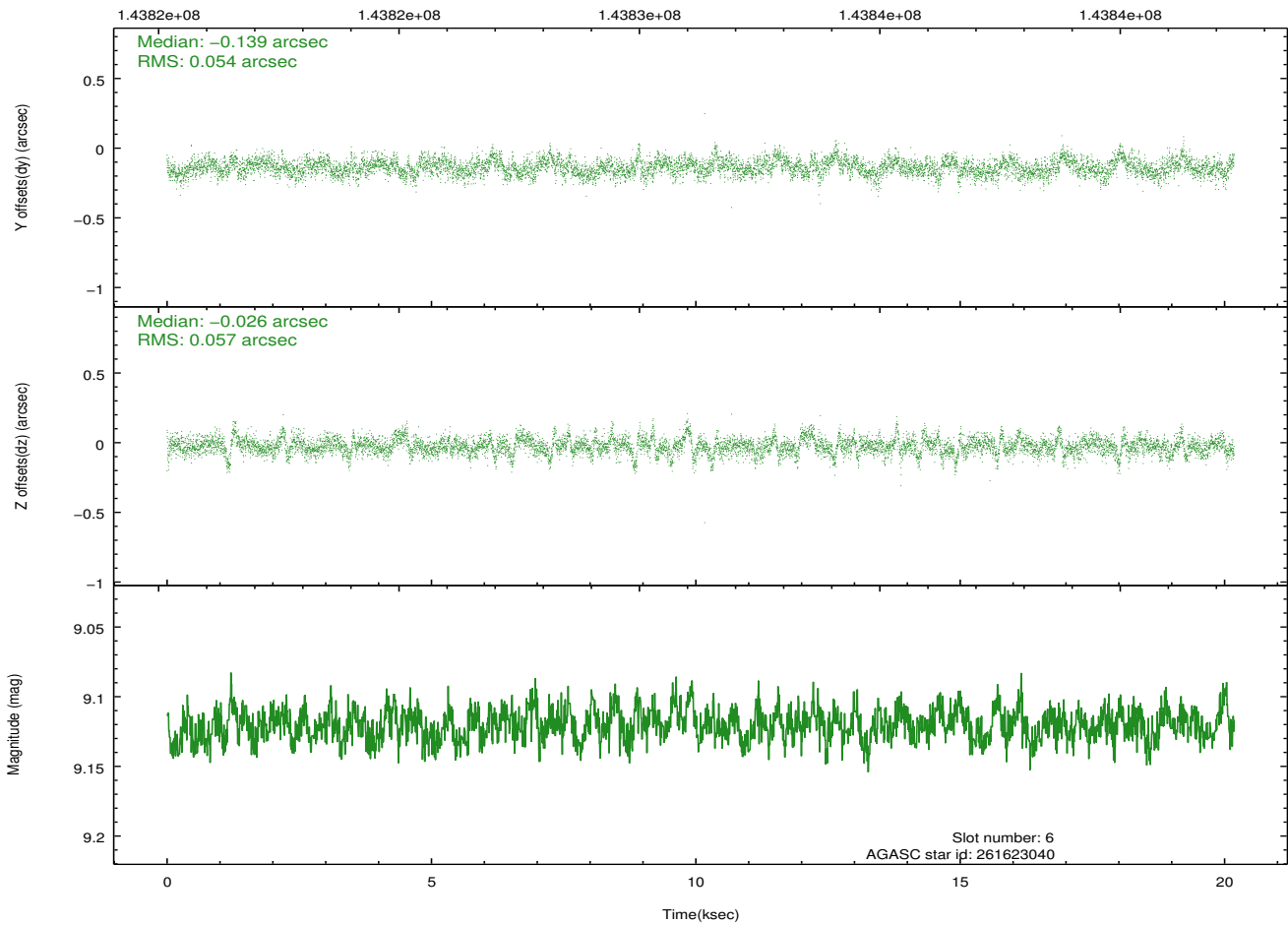
2.4.3 Slot 5



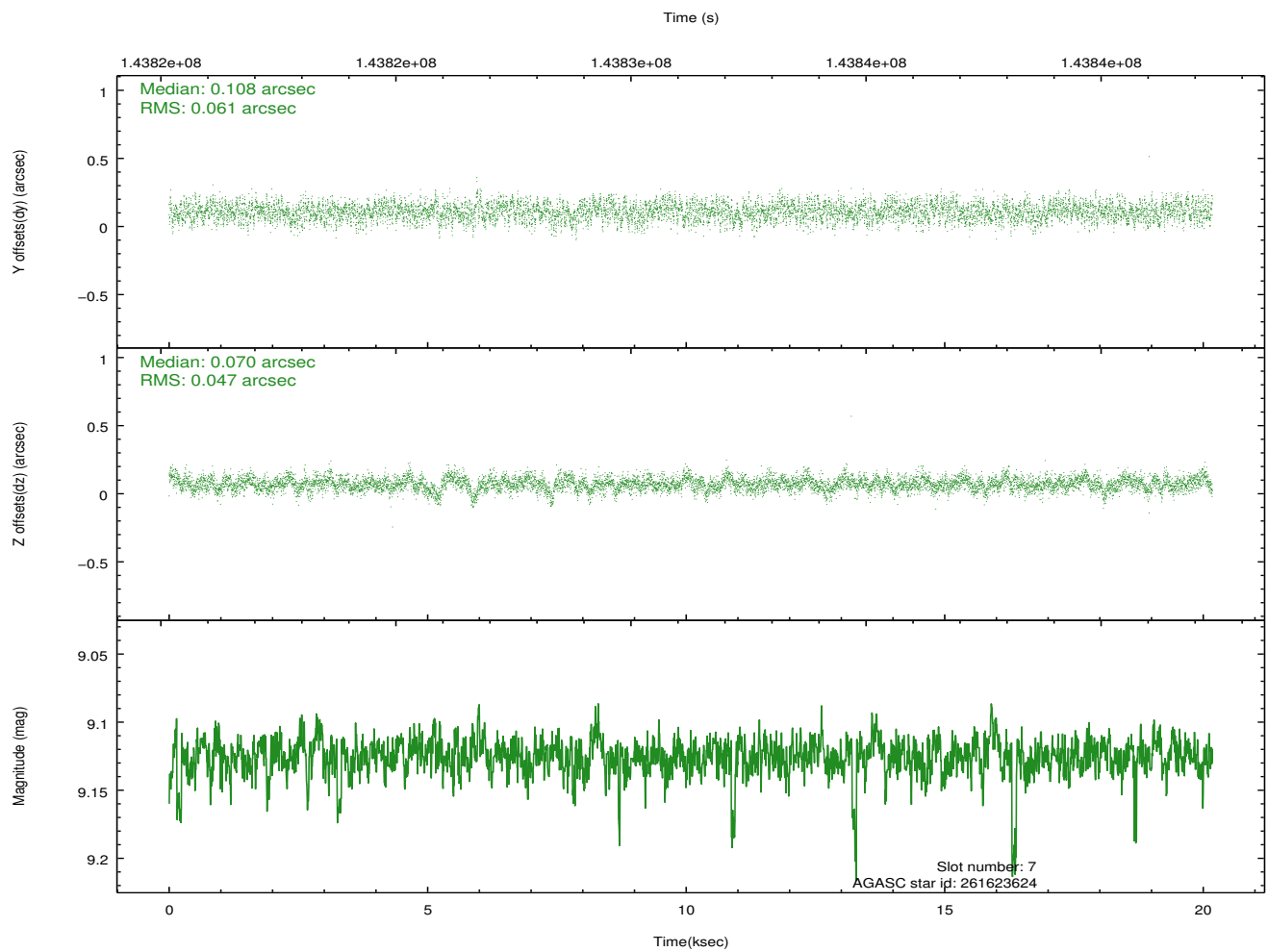
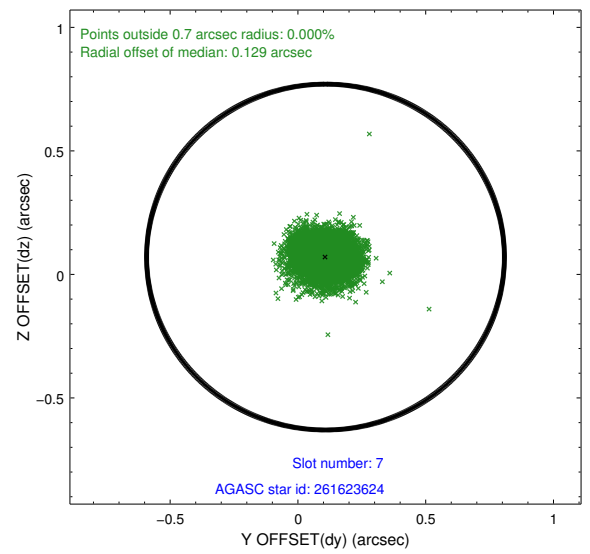
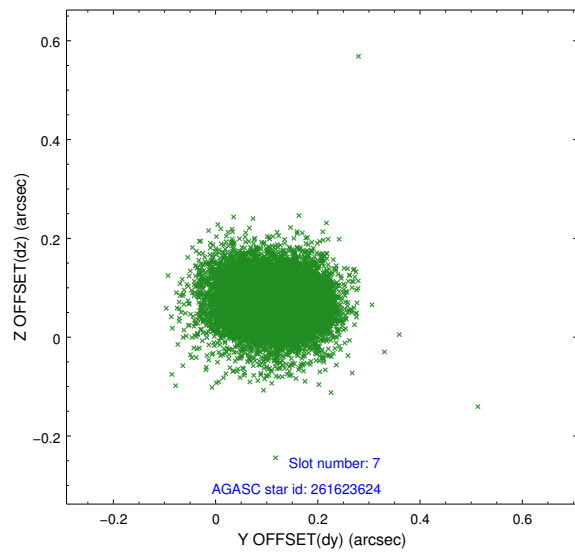
2.4.4 Slot 6



Time (s)

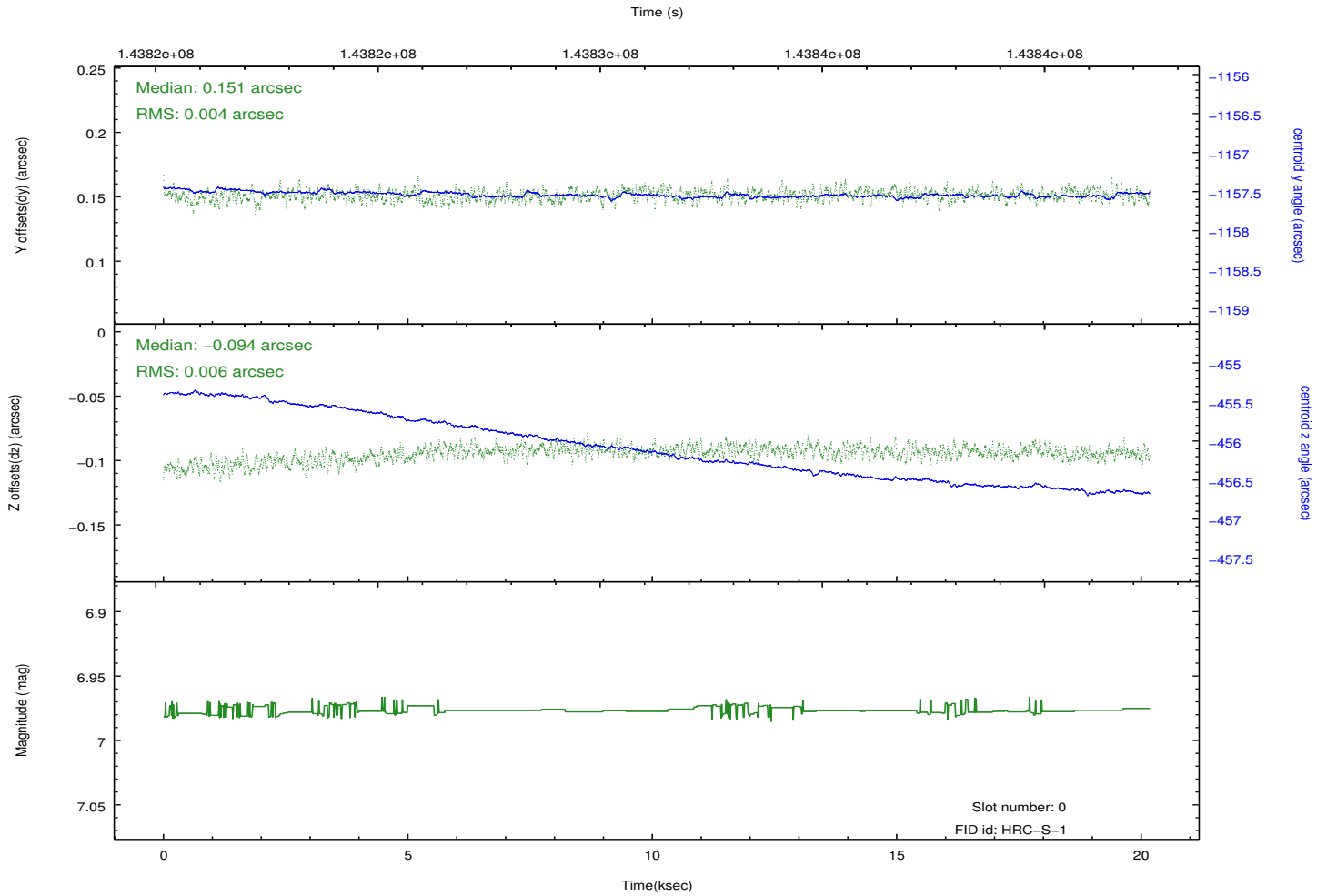
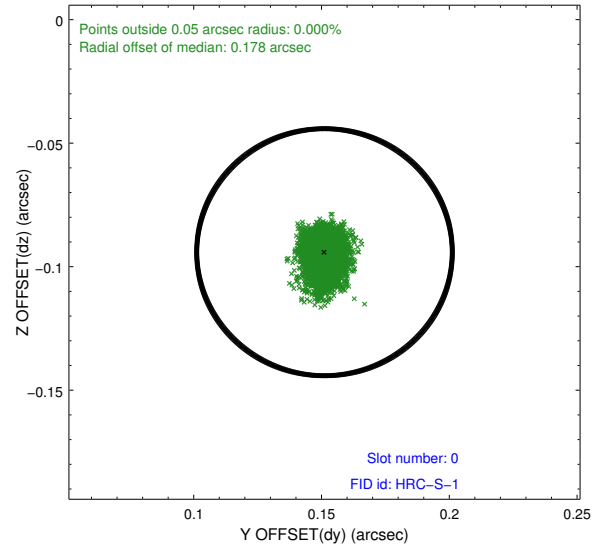
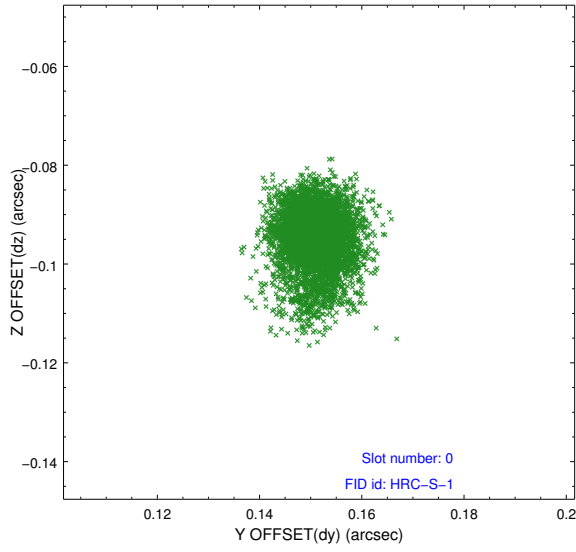


2.4.5 Slot 7

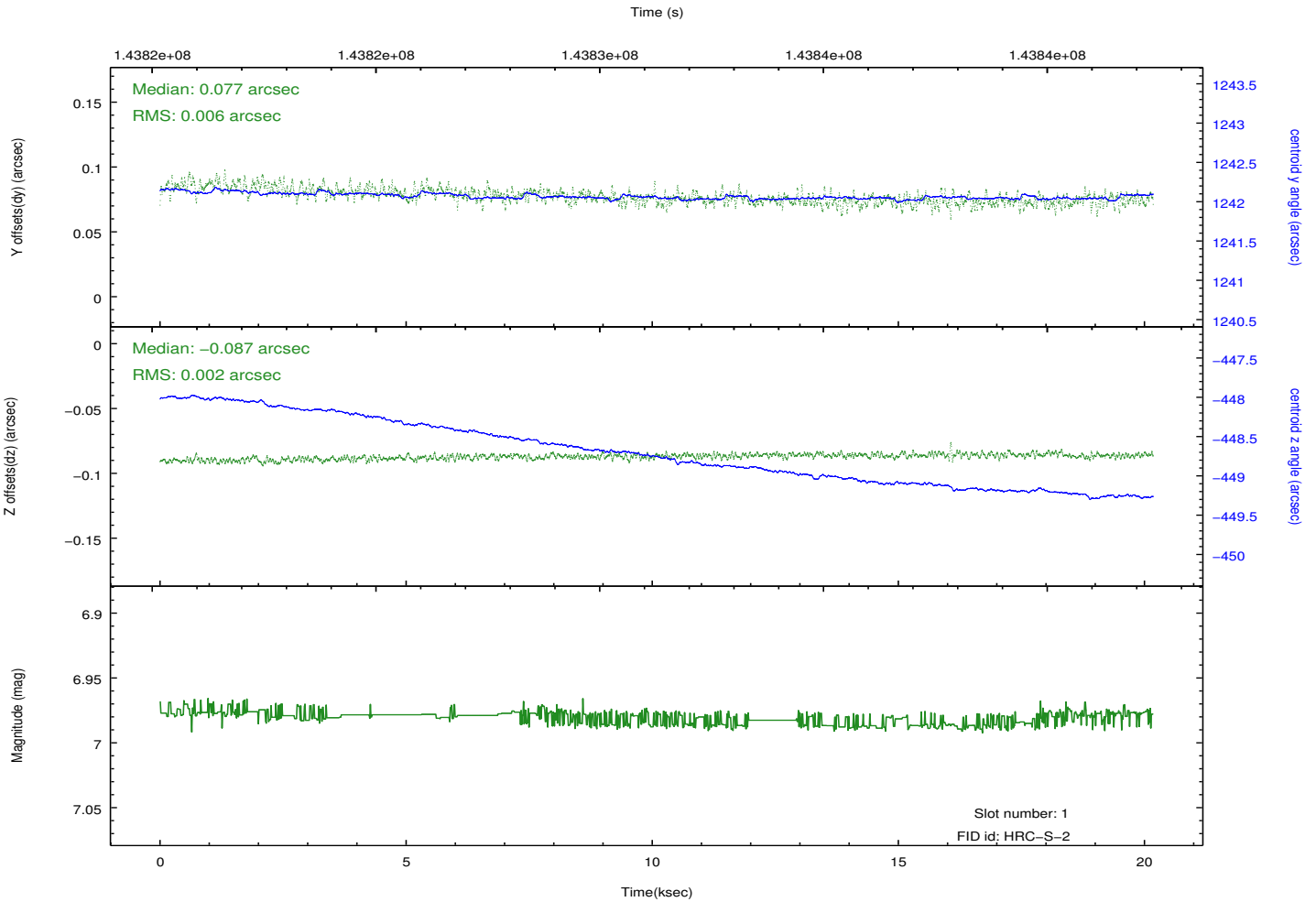
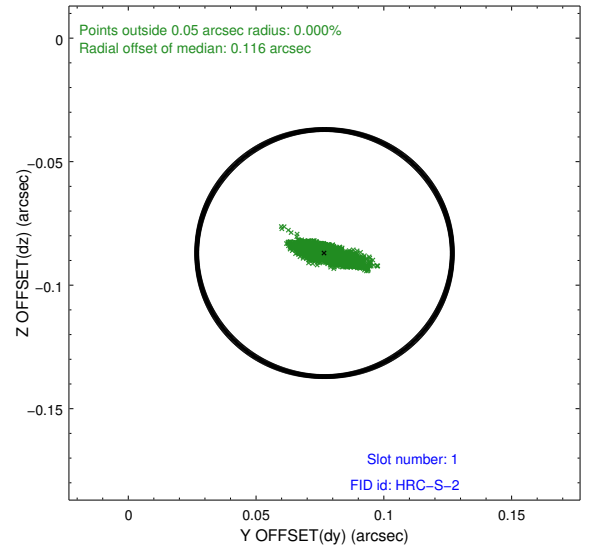
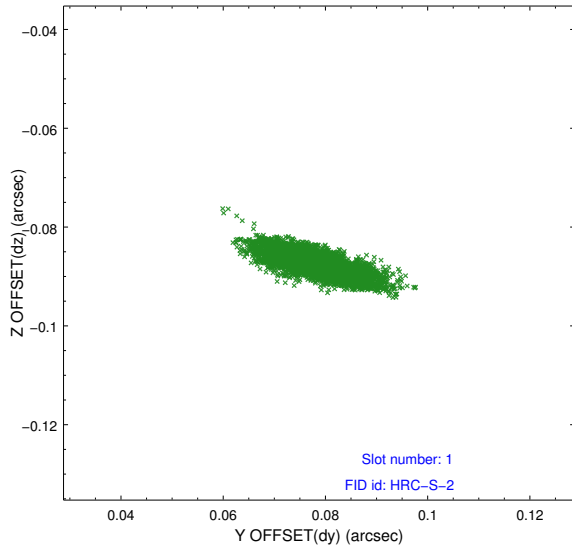


2.5 FID Slots

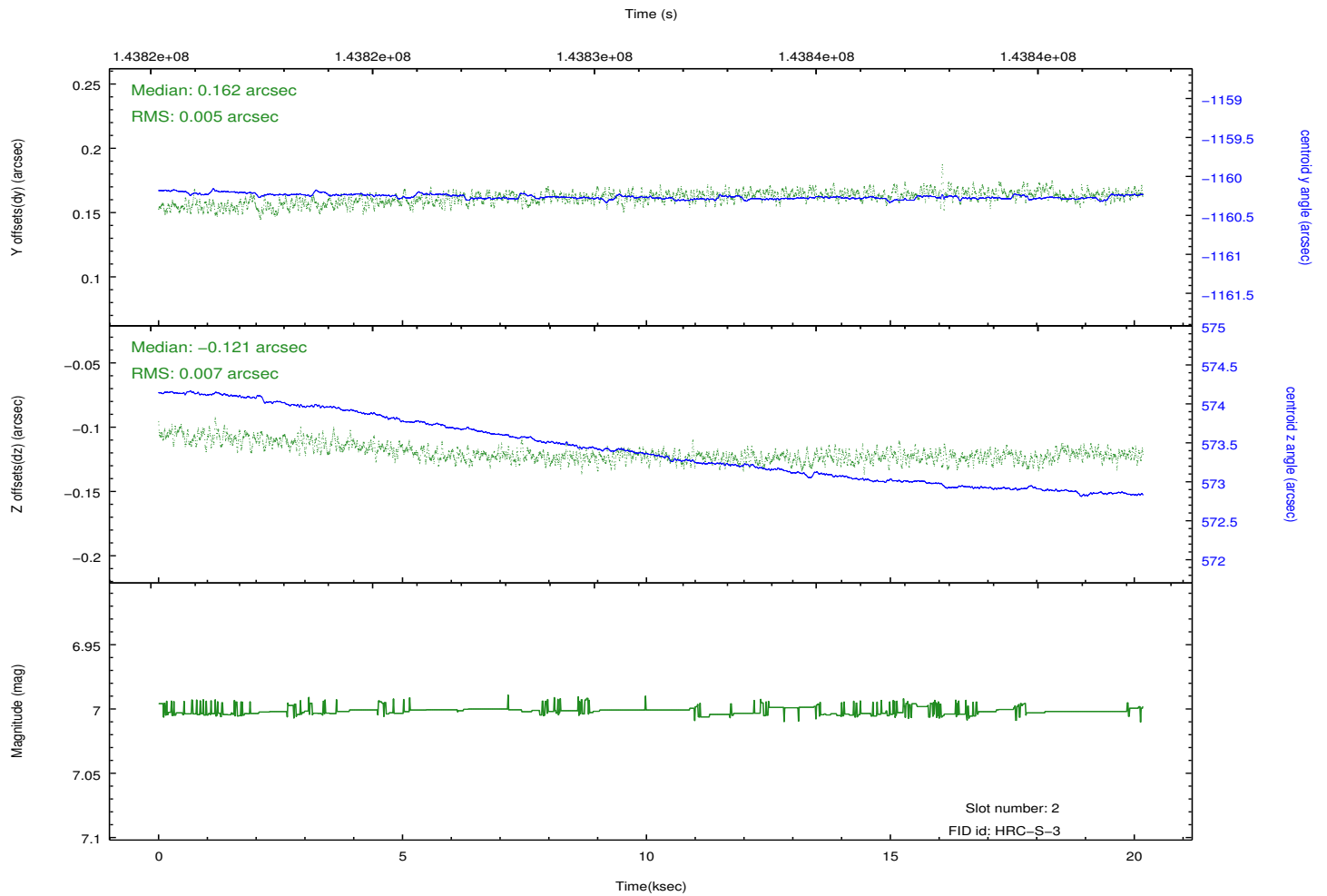
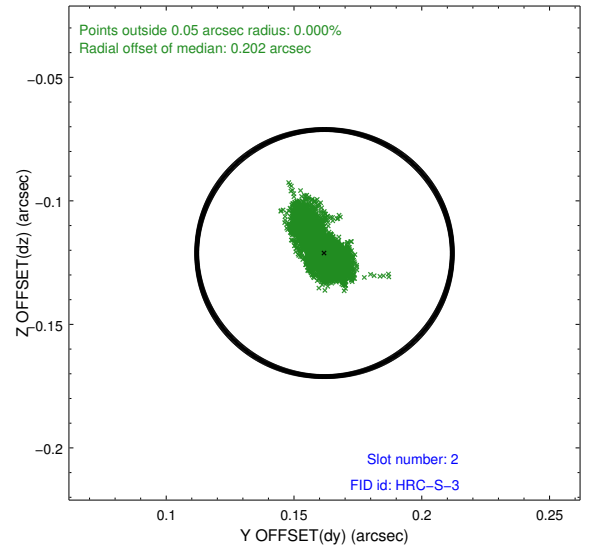
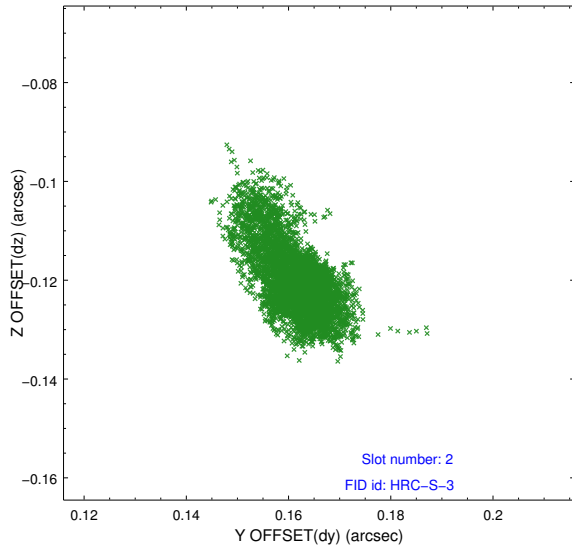
2.5.1 Slot 0



2.5.2 Slot 1

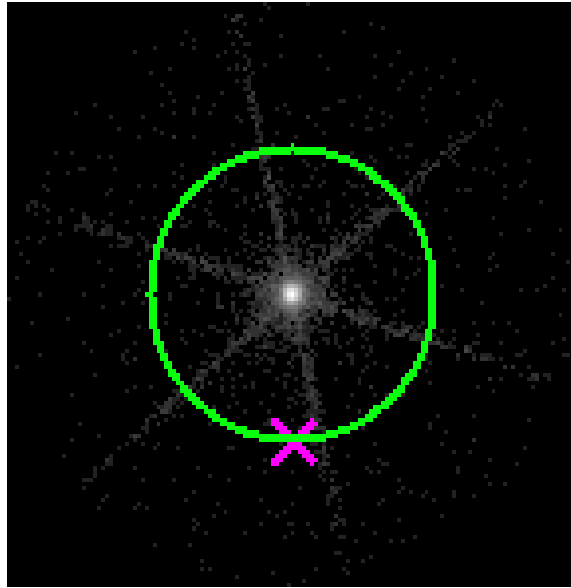


2.5.3 Slot 2

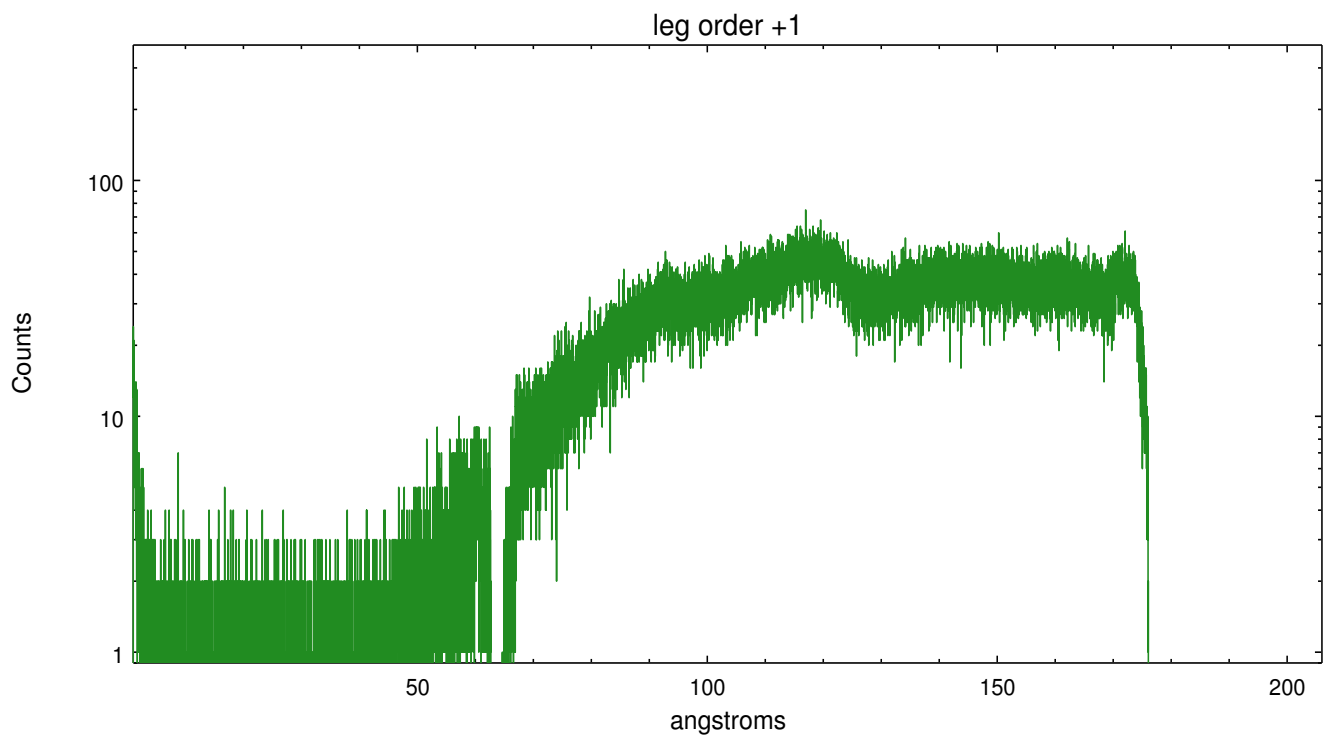
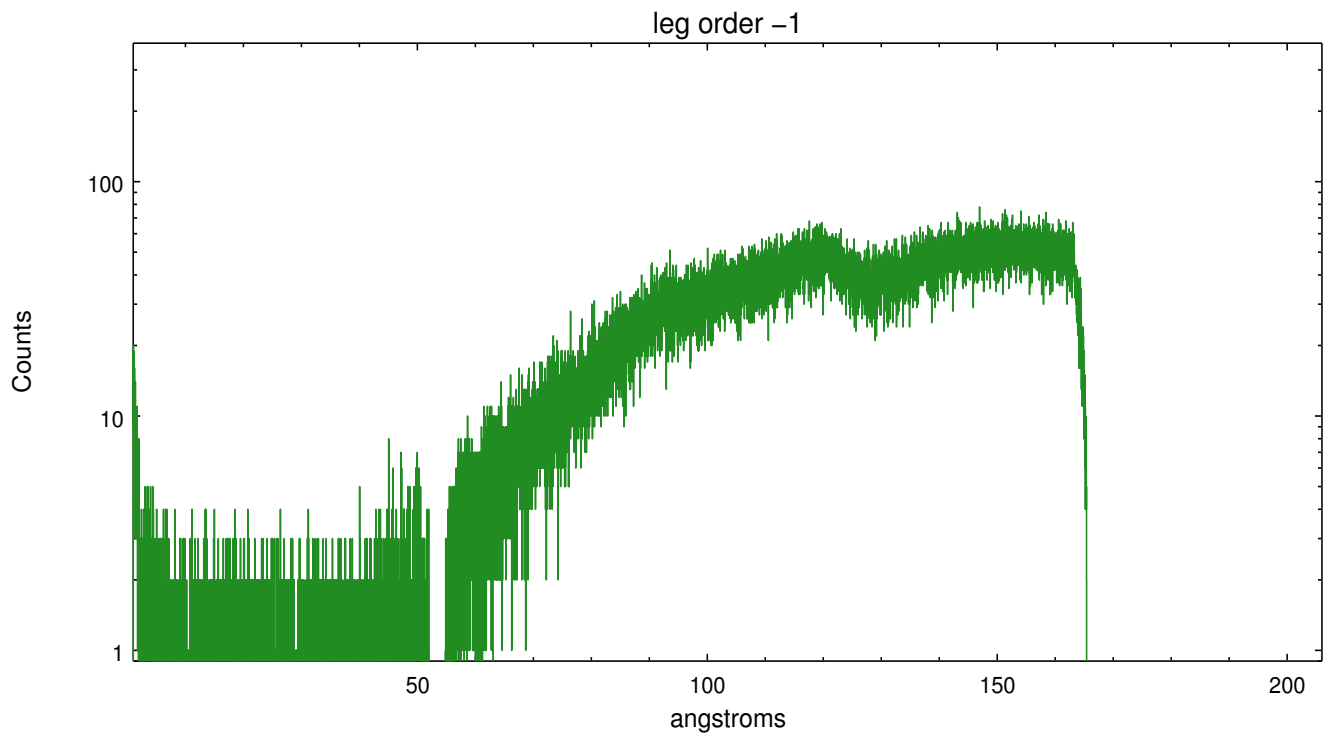


3 Gratings

3.1 LETG Arm



LETG Zero Order



A Summary

A.1 Status

V&V Scientist	Joy Nichols
V&V Date (YYYY-MM-DD)	2012.10.22
V&V Edition	1
V&V Disposition and Status	OK
V&V Charge Time	20.179

A.2 Comments