

V&V Reference Report

L2 ASCDS Version : 8.4.5

Observation 2755 - L2 Version 6
Chandra X-Ray Center

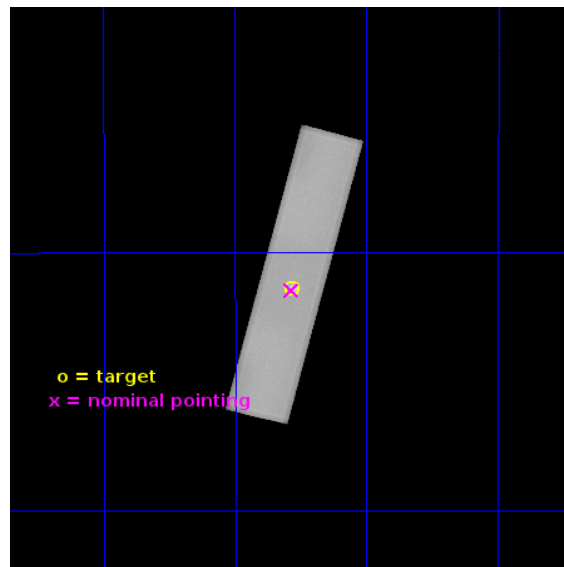
L2 Processing Date : Jun 28 2013

Contents

1	Front	2
2	OBI	3
2.1	OBI	3
2.1.1	Images	3
2.1.2	Parameters	4
2.1.3	Events	4
2.2	Compared Parameters	5
2.3	Aspect	6
2.4	Star Slots	9
2.4.1	Slot 3	9
2.4.2	Slot 4	10
2.4.3	Slot 5	11
2.4.4	Slot 6	12
2.4.5	Slot 7	13
2.5	FID Slots	14
2.5.1	Slot 0	14
2.5.2	Slot 1	15
A	Summary	16
A.1	Status	16
A.2	Comments	16

1 Front

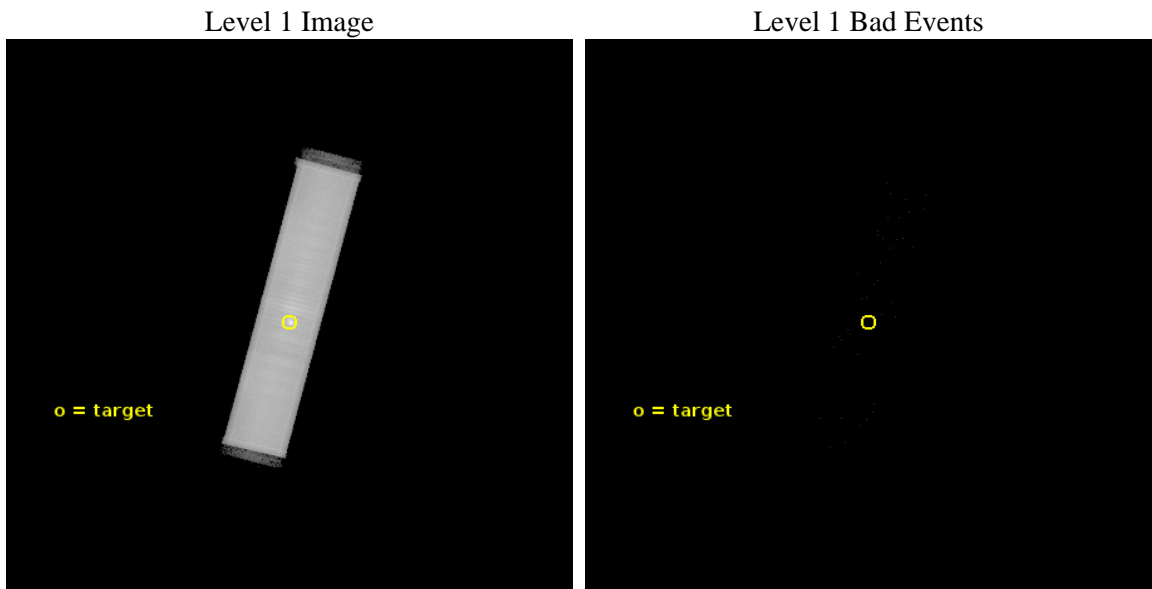
seq_num	500205	Sequence number
obs_id	2755	Observation id
title	A SEARCH FOR PULSATIONS FROM THE CENTRAL CORE OF G21.5-0.9	Proposa
observer	Dr. Stephen Murray	Principal investigator
object	G21.5-0.9	Source name
ra_targ	278.391667	Observer's specified target RA [deg]
dec_targ	-10.568611	Observer's specified target Dec [deg]
ra_nom	278.39269570877	Nominal RA [deg]
dec_nom	-10.573164339453	Nominal Dec [deg]
roll_nom	284.41309053765	Nominal Roll [deg]
revision	6	Processing version of data
ontime	30368.957513213	[s]
livetime	29196.874119056	Ontime multiplied by DTCOR
l2events	1288380	Number of level 2 events



2 OBI

2.1 OBI

2.1.1 Images



2.1.2 Parameters

obi_num	2	Obi number	sched_exp_time	29992.282000	[s] Scheduled observation exposure time
ascdsver	10	Processing system revision	ontime	30368.957513213	[s]
caldsver	4.5.7	 	l1events	1724457	Number of level 1 events
date	2013-06-29T00:25:12	Date and time of file creation			
revision	6	Processing version of data			

2.1.3 Events

Level 1 Events

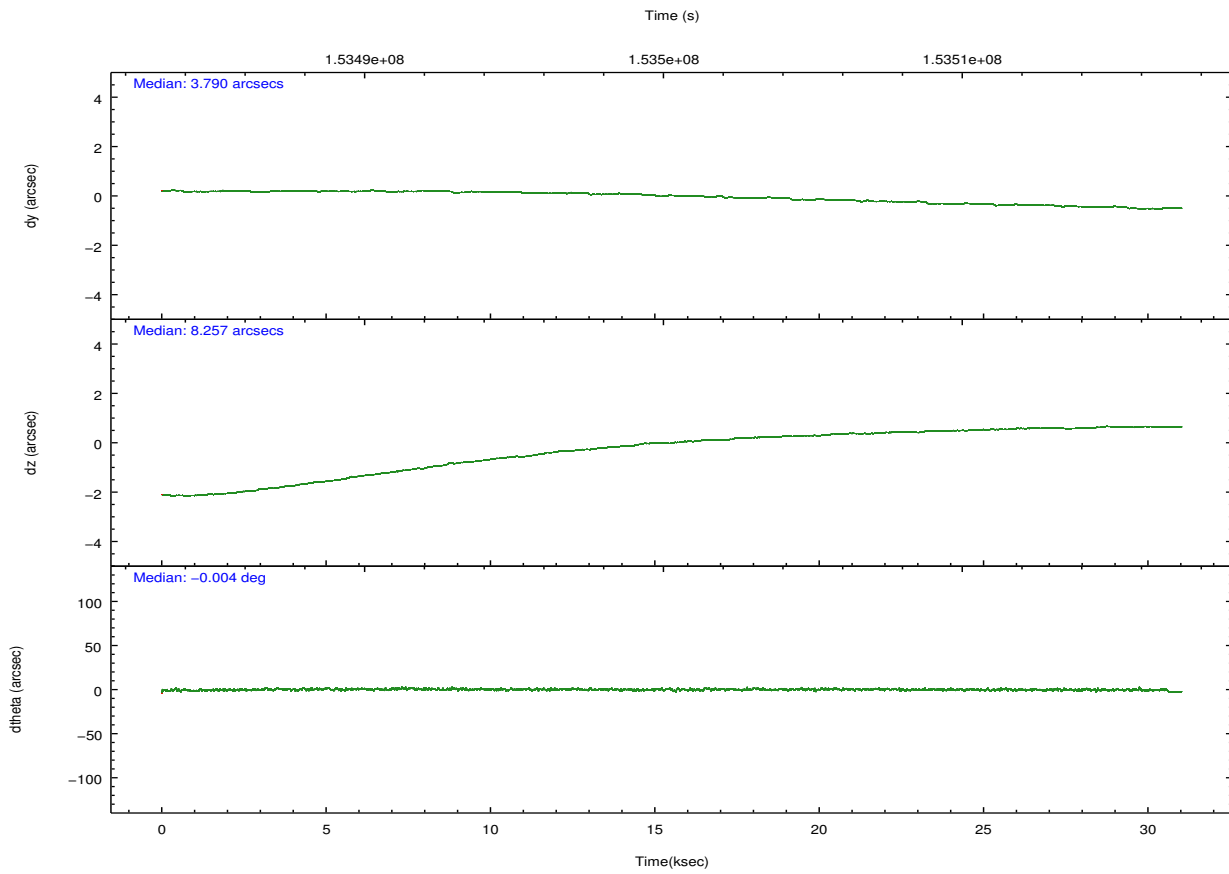
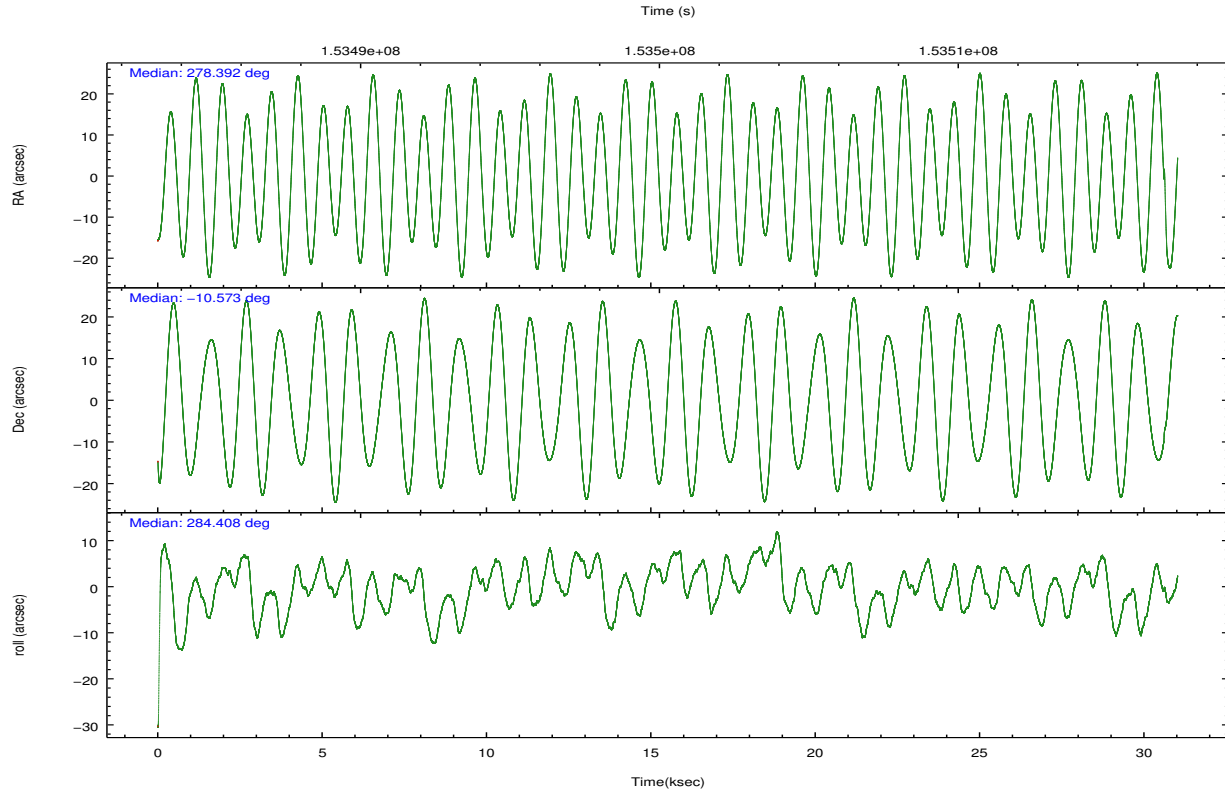
	segment 1	segment 2	segment 3
level 1 events	1709	1722740	8
rejected events	0	1014	0
rejected %	0%	0%	0%

2.2 Compared Parameters

Parameter	Planned	Actual
Instrument	HRC	HRC
Detector	HRC-S	HRC-S
Grating	NONE	NONE
Data mode	OBSERVING	OBSERVING
Observation mode	POINTING	POINTING
[deg] Pointing RA	278.371358	278.3926957087732
[deg] Pointing Dec	-10.553763	-10.57316433945263
[deg] Pointing Roll	284.341870	284.4130905376468
[mm] SIM focus pos	-1.529586	-1.523540733526241
[mm] SIM defocus	0.003750771043328743	0.009795905878055677
[mm] SIM translation stage pos	250.455976	250.4635187648994
[mm] SIM translation stage offset	0	-0.007540371344731511
[s] Observation start time (MET)	153484903.184000	153483887.43871
Observation start date	2002-11-12T10:40:39	2002-11-12T10:24:47
[s] Observation end time (MET)	153514896.184000	153516652.59007
Observation end date	2002-11-12T19:00:32	2002-11-12T19:30:52

Parameter	Planned	Actual
Obspar format version number	7	7
Obspar file type	PREDICTED	ACTUAL
Obspar update status	NONE	UPDATED

2.3 Aspect

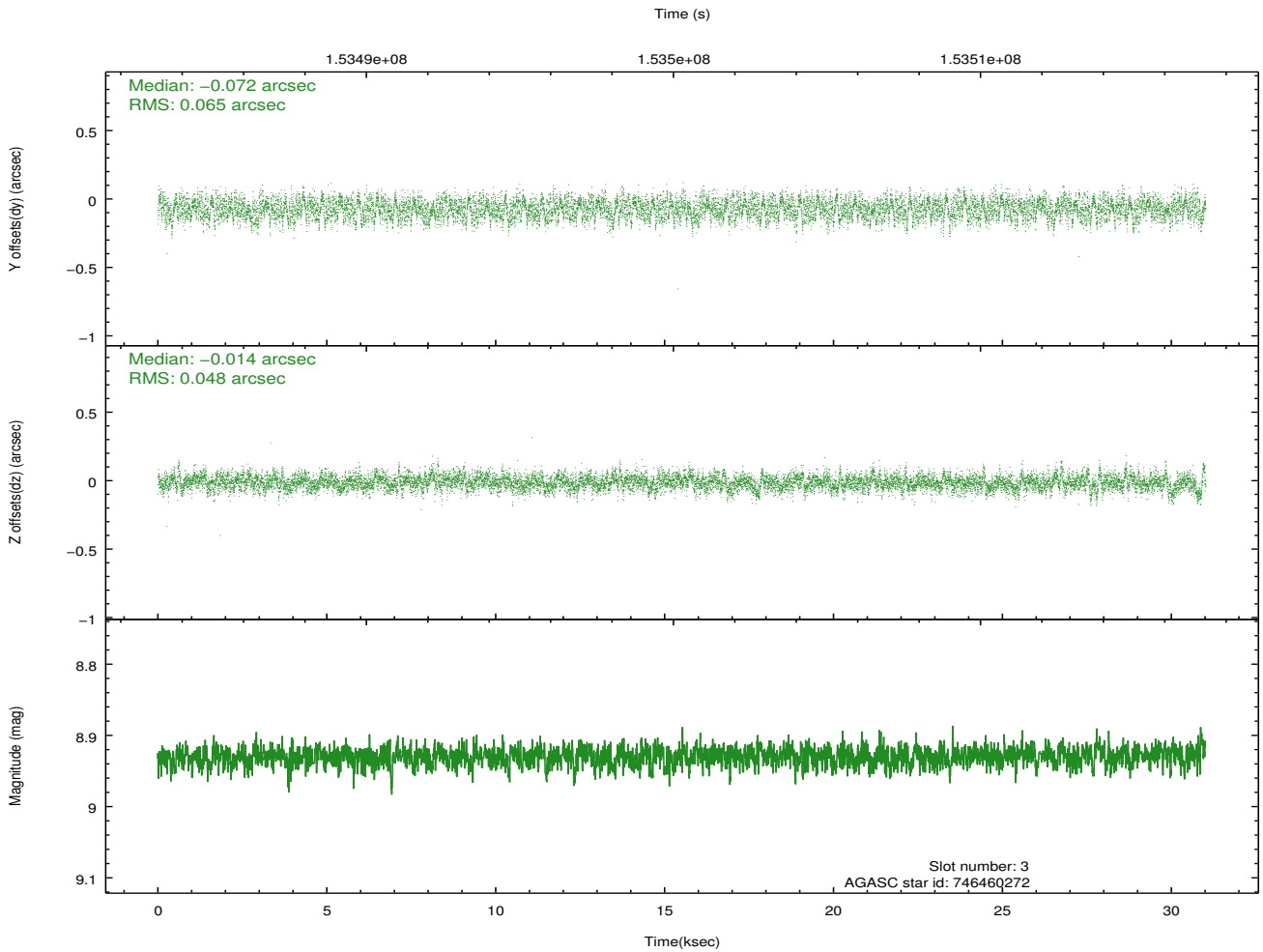
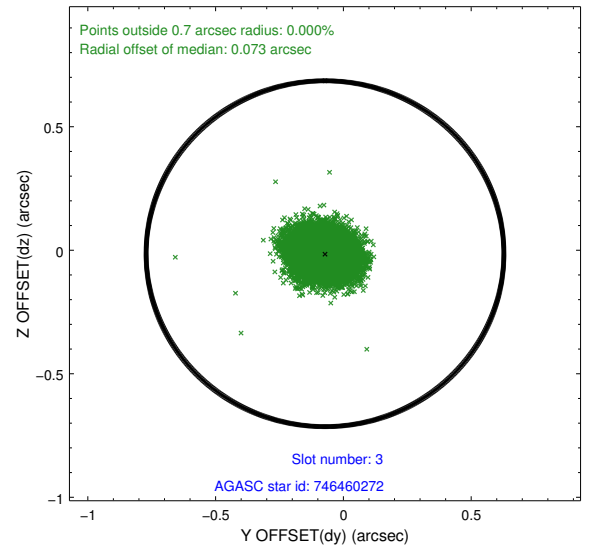
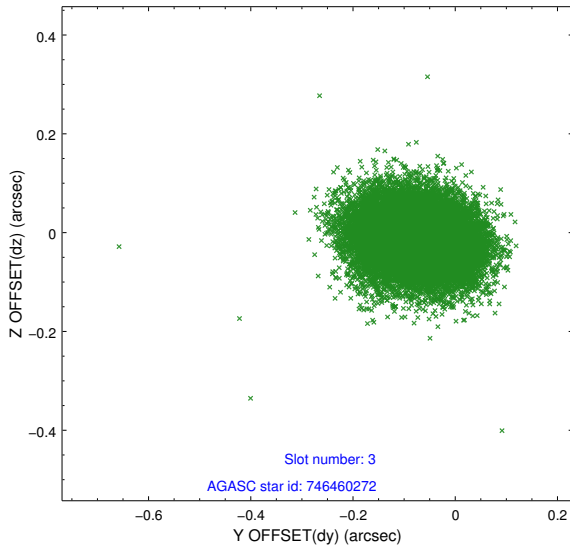


Slot Statistics

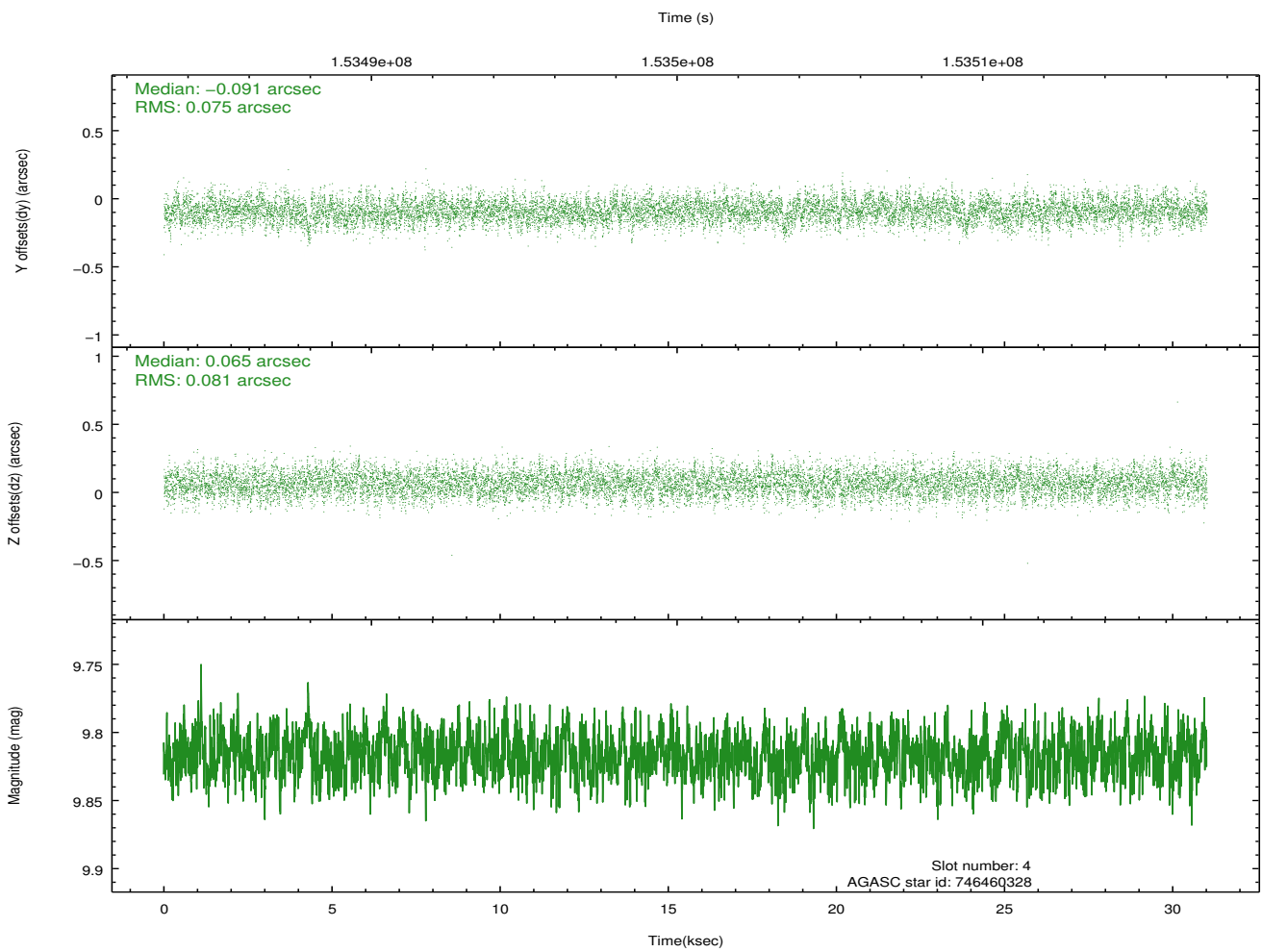
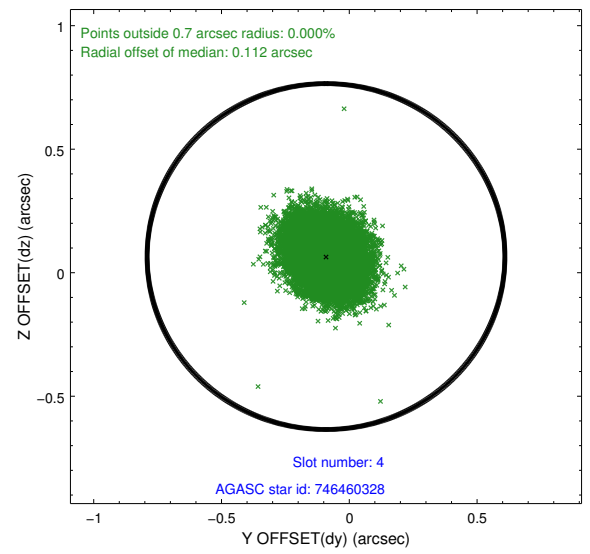
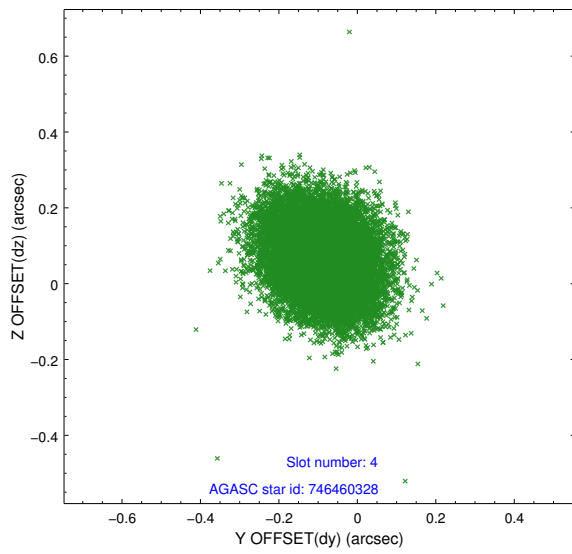
slot	status	id	mag	n_pts	med_dy	med_dz	dr1	dr2	ra	dec	mean_y	mean_z
0	FID	HRC-S-1	6.99	7469	0.166	-0.104	0.004	0.008	0.000000	0.000000	-1157.75	-456.43
1	FID	HRC-S-2	6.99	7469	0.099	-0.103	0.004	0.008	0.000000	0.000000	1241.69	-449.09
2	OMITTED		0.00	0	0.000	0.000	0.000	0.000	0.000000	0.000000	0.00	0.00
3	GUIDE	746460272	8.93	15124	-0.072	-0.014	0.087	0.138	278.847488	-10.152127	-980.70	1992.89
4	GUIDE	746460328	9.82	15073	-0.091	0.065	0.118	0.189	278.603974	-9.898096	-2081.01	1384.35
5	GUIDE	746462392	8.55	15125	0.073	0.045	0.067	0.110	279.038421	-10.890715	1763.52	1984.59
6	GUIDE	746462456	8.39	15128	-0.031	0.044	0.066	0.105	278.652171	-10.530173	165.99	984.48
7	GUIDE	746995400	9.48	15110	0.119	-0.138	0.127	0.209	278.078957	-11.289885	2313.77	-1656.16

2.4 Star Slots

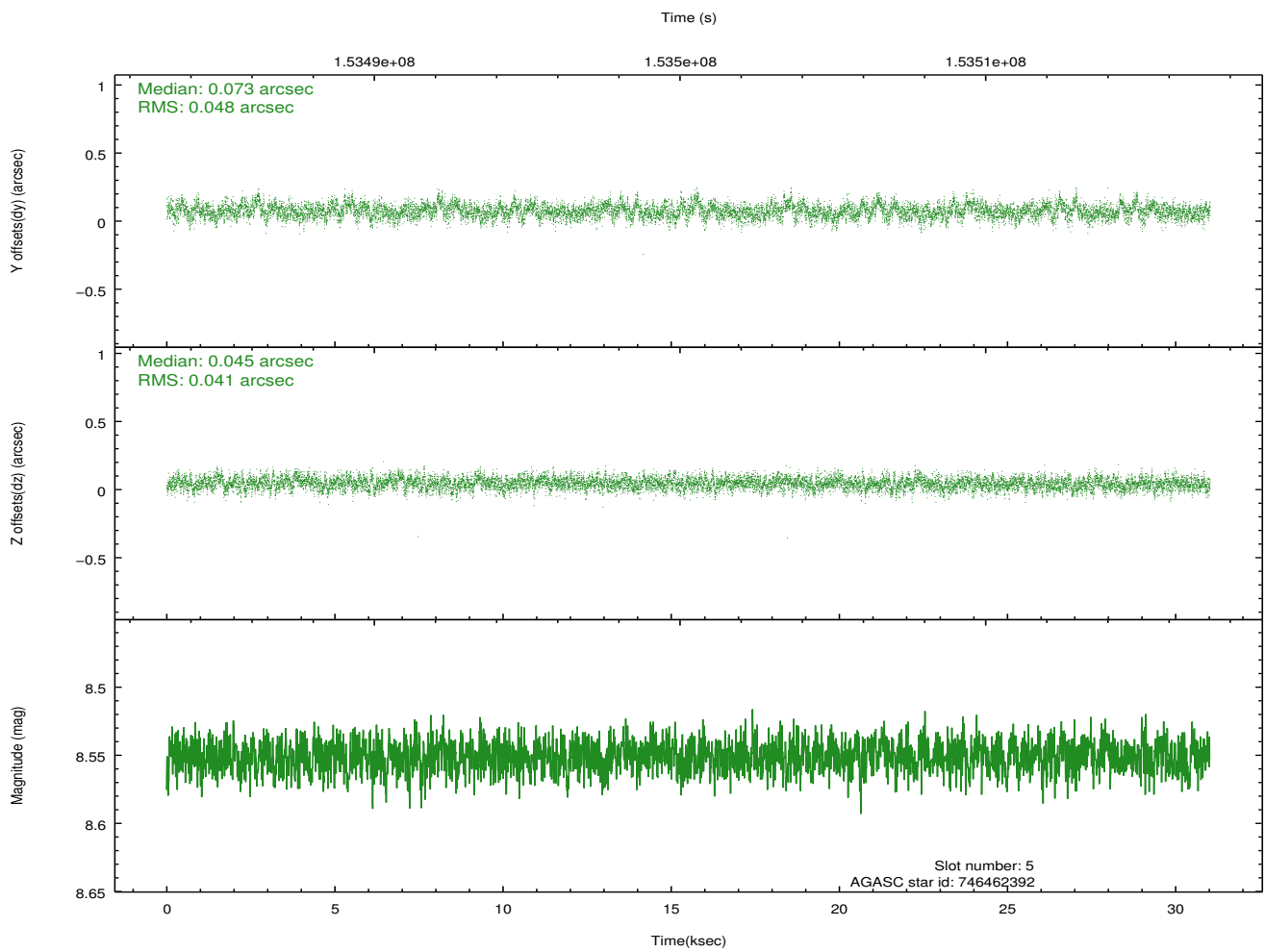
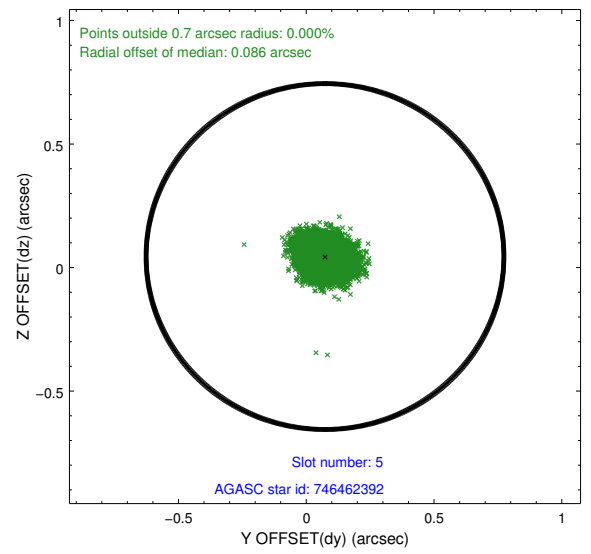
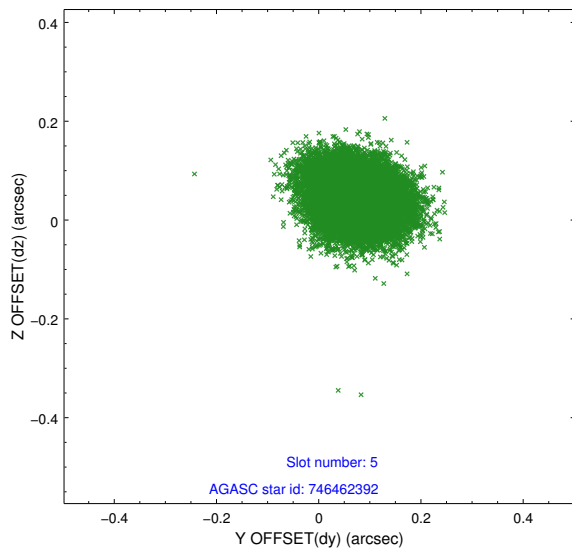
2.4.1 Slot 3



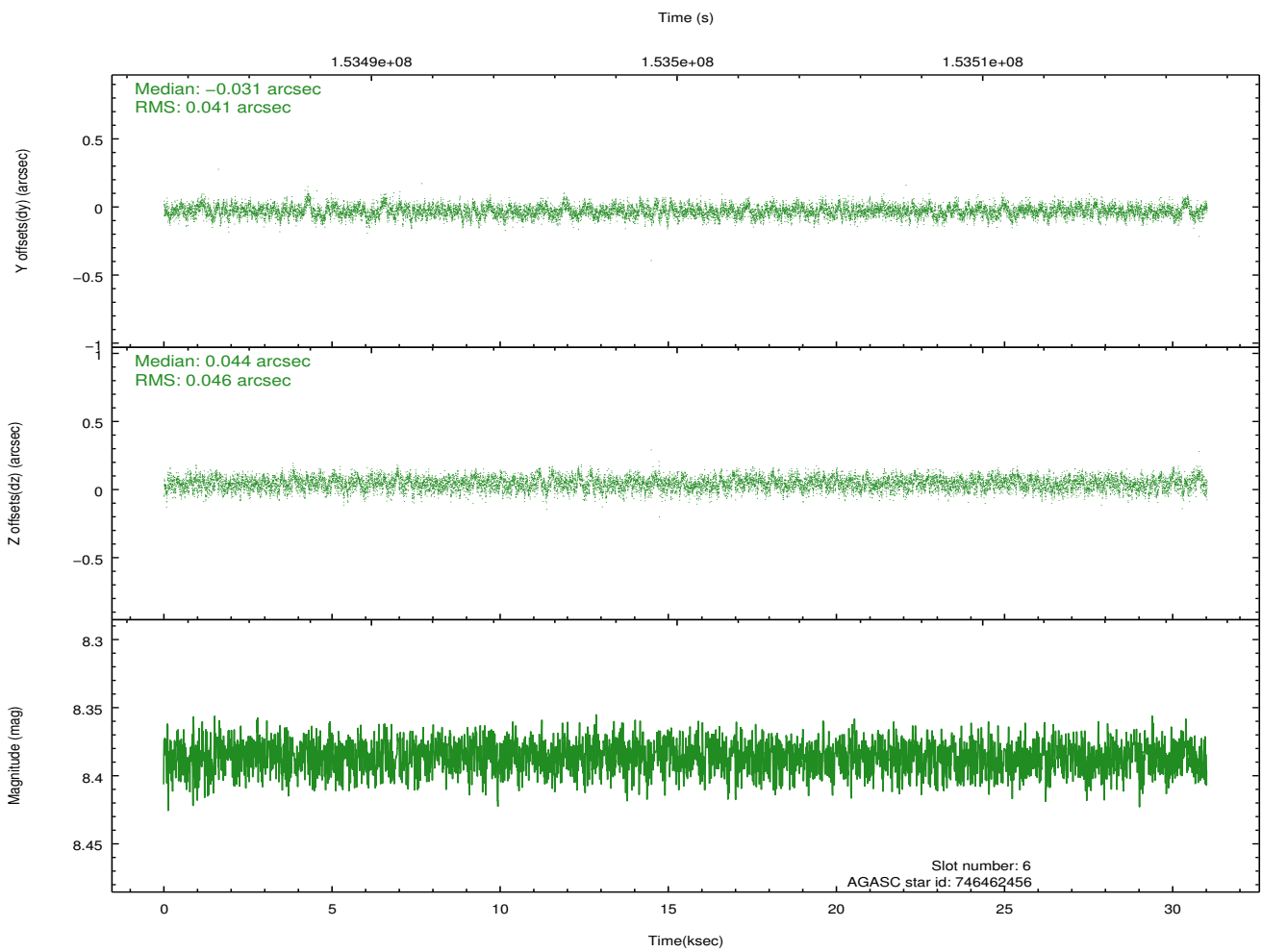
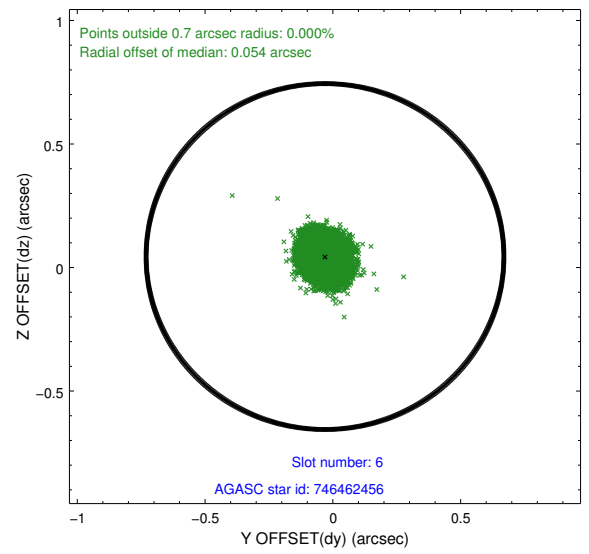
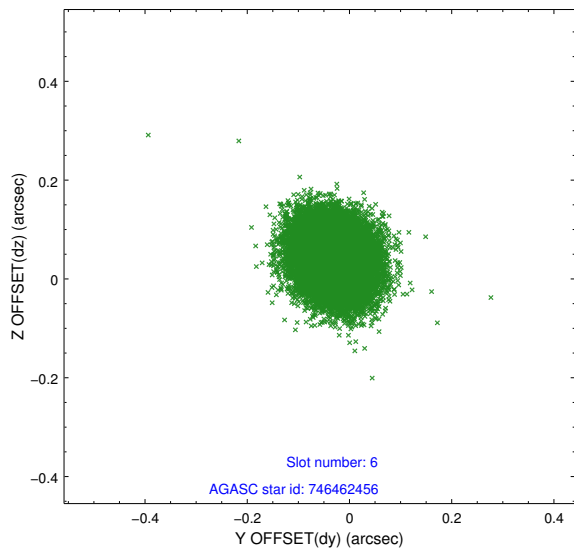
2.4.2 Slot 4



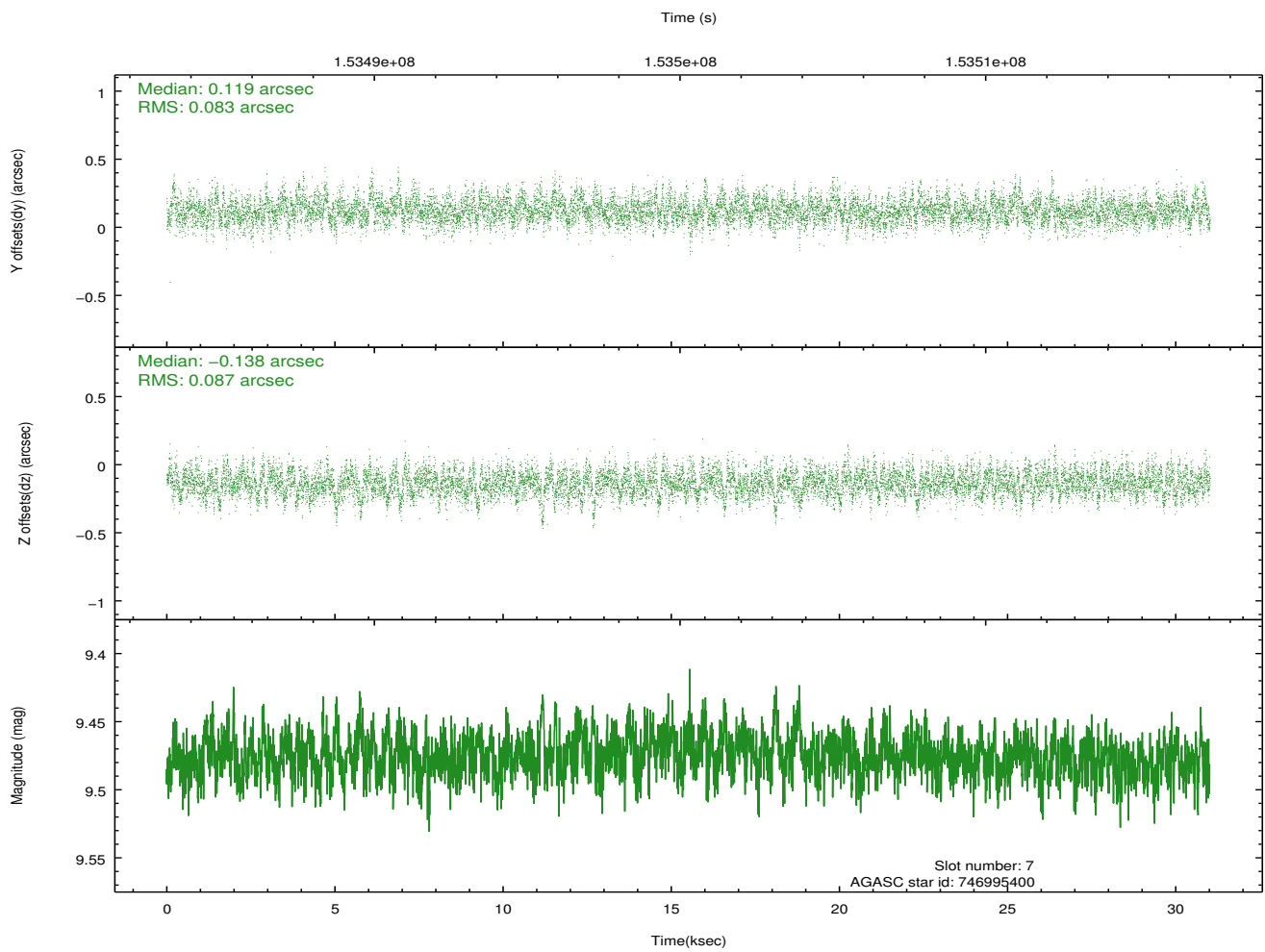
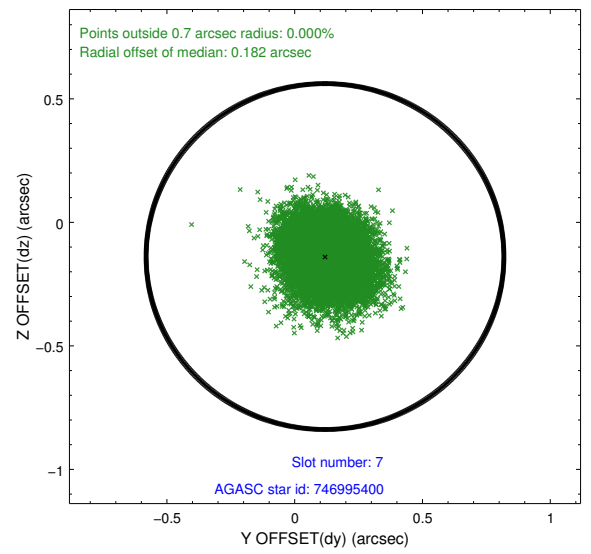
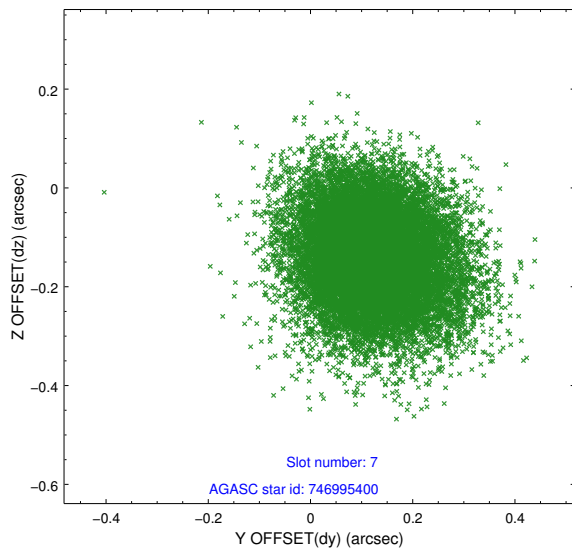
2.4.3 Slot 5



2.4.4 Slot 6

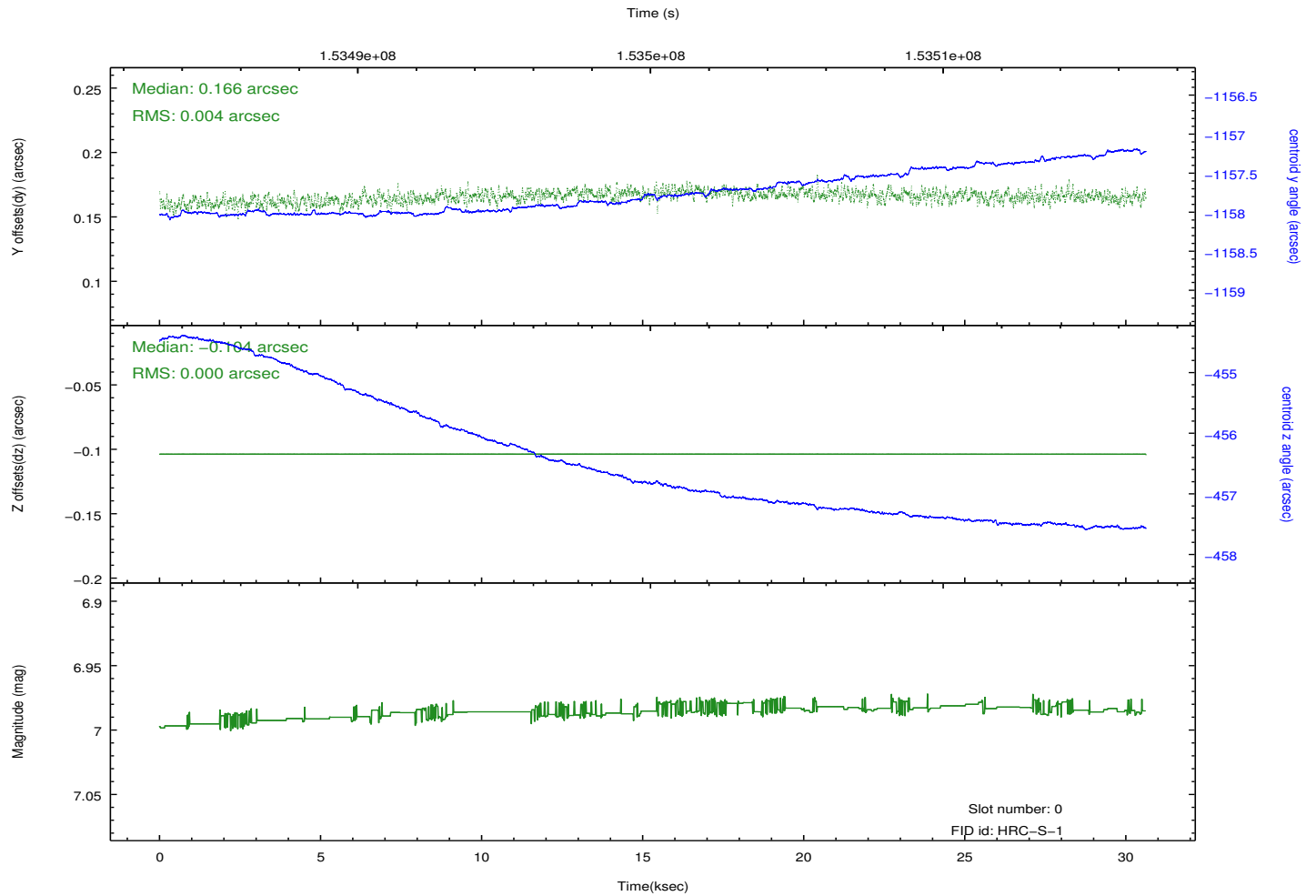
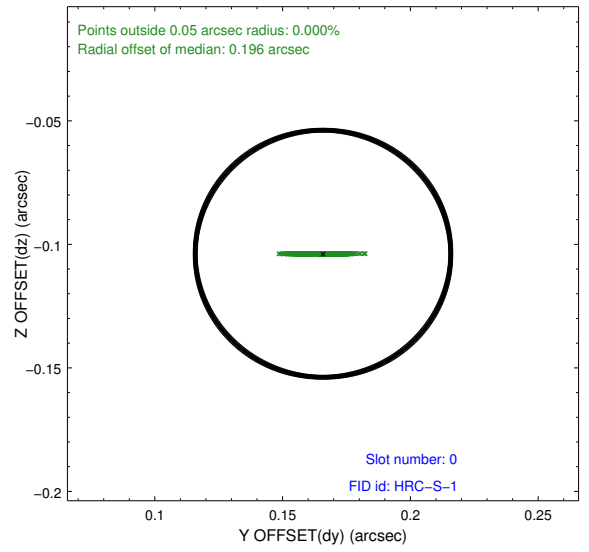
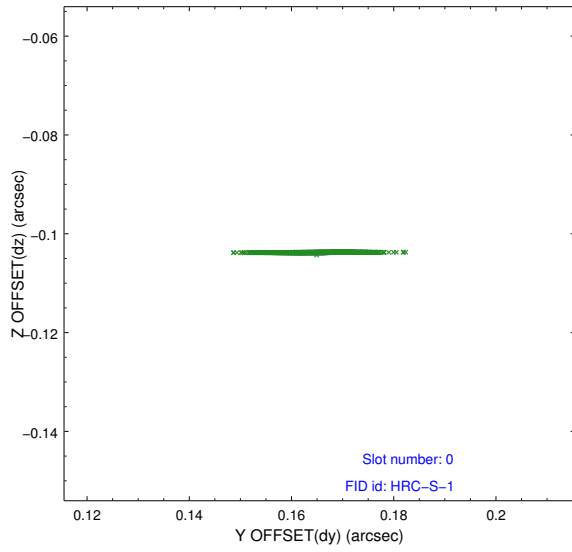


2.4.5 Slot 7

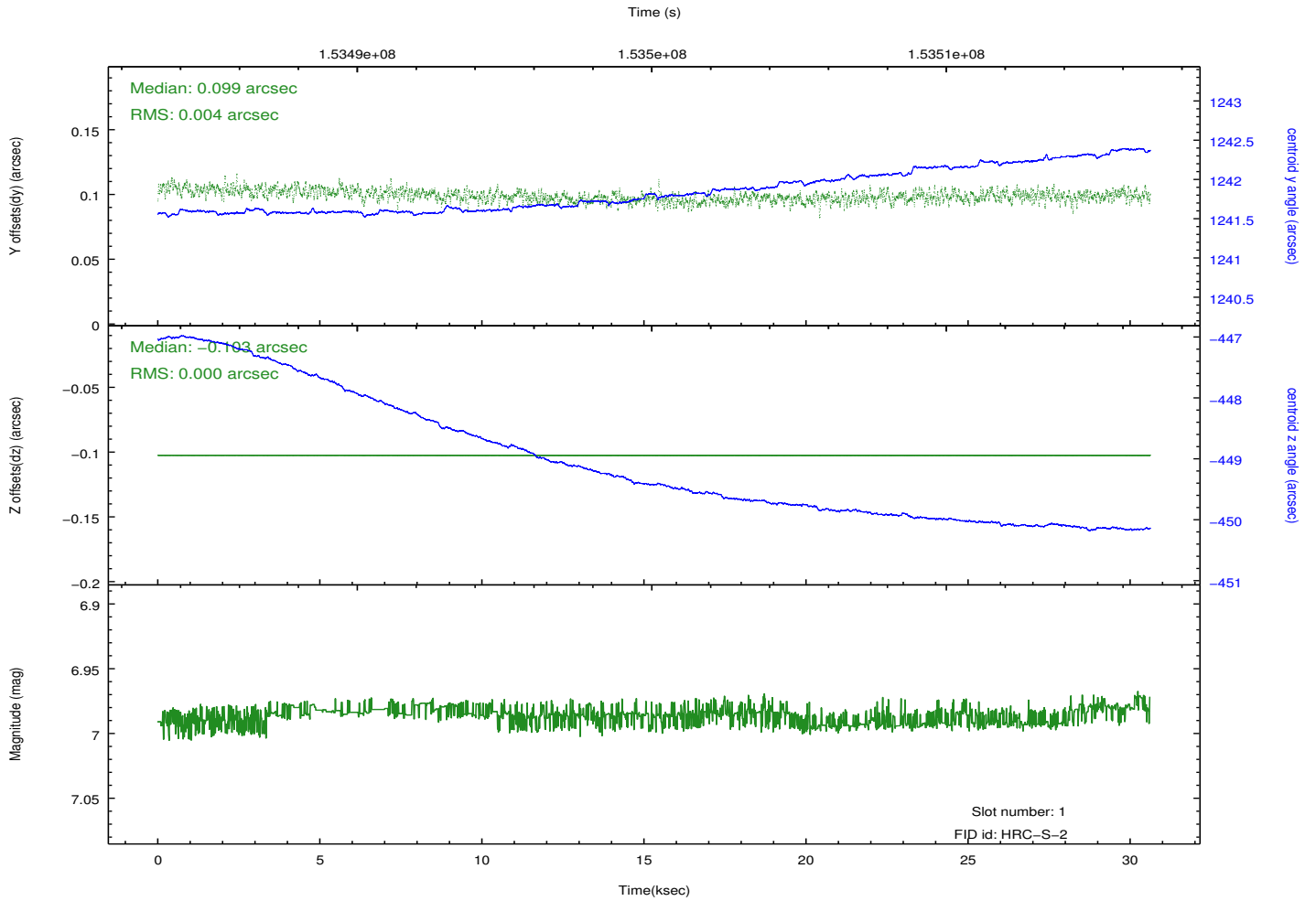
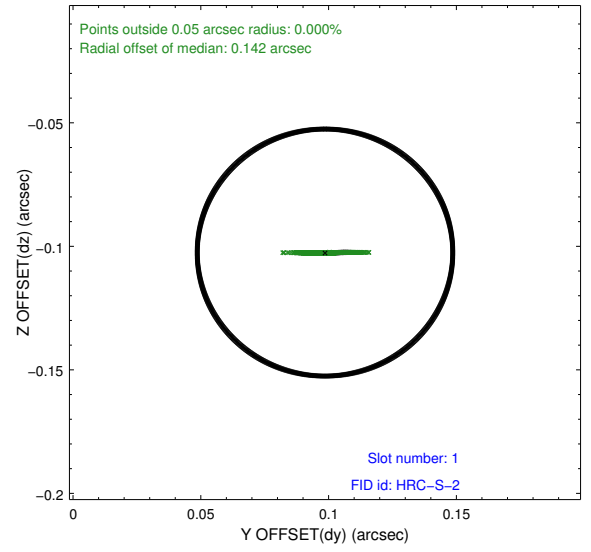
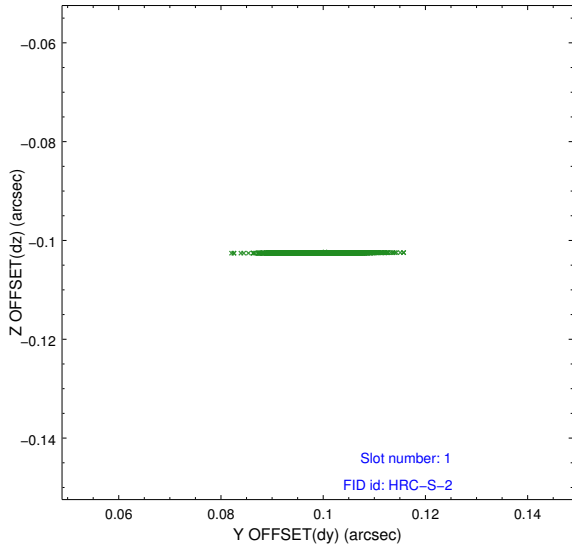


2.5 FID Slots

2.5.1 Slot 0



2.5.2 Slot 1



A Summary

A.1 Status

V&V Scientist	Beth Sundheim
V&V Date (YYYY-MM-DD)	2013.07.01
V&V Edition	1
V&V Disposition and Status	OK
V&V Charge Time	30.368

A.2 Comments

The fid light in slot 2 was removed from the aspect solution due to poor data quality. The aspect solution is improved by the removal of this fid light from the solution.