

# V&V Reference Report

## L2 ASCDS Version : 8.4.5

Observation 2795 - L2 Version 3  
Chandra X-Ray Center

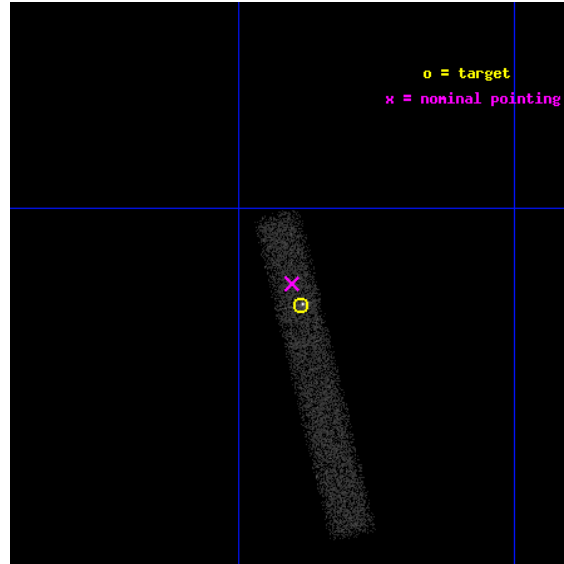
L2 Processing Date : Sep 27 2012

## Contents

<b>1</b>	<b>Front</b>	<b>2</b>
<b>2</b>	<b>OBI</b>	<b>3</b>
2.1	OBI . . . . .	3
2.1.1	Images . . . . .	3
2.1.2	Bias . . . . .	3
2.1.3	Parameters . . . . .	4
2.1.4	Events . . . . .	4
2.2	Compared Parameters . . . . .	5
2.3	Aspect . . . . .	6
2.4	Star Slots . . . . .	9
2.4.1	Slot 3 . . . . .	9
2.4.2	Slot 4 . . . . .	10
2.4.3	Slot 5 . . . . .	11
2.4.4	Slot 6 . . . . .	12
2.4.5	Slot 7 . . . . .	13
2.5	FID Slots . . . . .	14
2.5.1	Slot 0 . . . . .	14
2.5.2	Slot 1 . . . . .	15
2.5.3	Slot 2 . . . . .	16
<b>A</b>	<b>Summary</b>	<b>17</b>
A.1	Status . . . . .	17
A.2	Comments . . . . .	17

# 1 Front

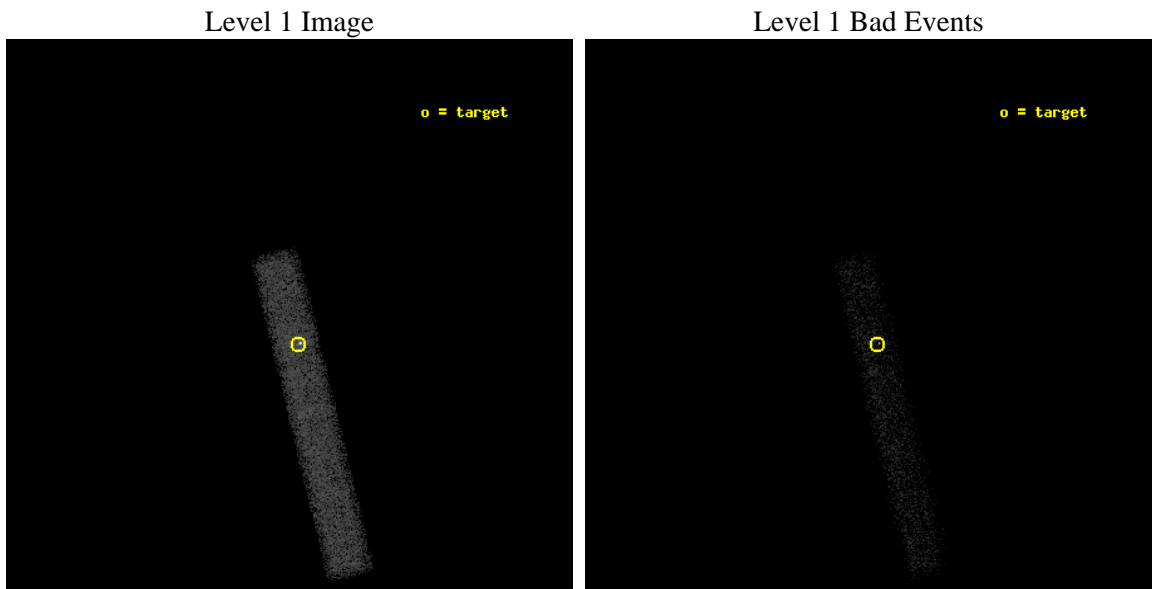
seq_num	500245	Sequence number
obs_id	2795	Observation id
title	CHANDRA OBSERVATIONS OF RXJ0806.3+1527: X-RAY STUDY OF A UNIQUE X-RAY PULSATOR	Proposal title
observer	Dr. Gianluca Israel	Principal investigator
object	RXJ0806.3+1527	Source name
dtcycle	0	&#160
cycle	P	events from which exps? Prim/Second/Both
ra_targ	121.596667	Observer's specified target RA [deg]
dec_targ	15.458444	Observer's specified target Dec [deg]
ra_nom	121.6007317212	Nominal RA [deg]
dec_nom	15.467322565499	Nominal Dec [deg]
roll_nom	76.378312728063	Nominal Roll [deg]
revision	3	Processing version of data
ontime	21220.800316215	Sum of GTIs [s]
livetime	19246.145761123	Livetime [s]
ontime7	21220.800316215	Sum of GTIs [s]
l2events	16679	Number of level 2 events



## 2 OBI

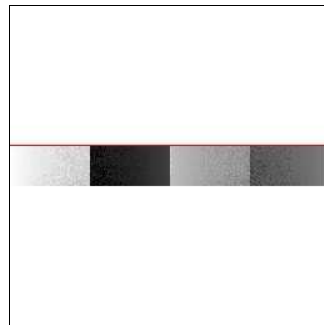
### 2.1 OBI

#### 2.1.1 Images



#### 2.1.2 Bias

Chip 7



### 2.1.3 Parameters

obi_num	0	Obi number	sched_exp_time	20600.000000	[s] Scheduled observation exposure time
ascdsver	8.4.5	Processing system revision	ontime	21220.800316215	Sum of GTIs [s]
caldbver	4.5.1.1	&#160	ontime7	21220.800316215	Sum of GTIs [s]
date	2012-09-27T02:19:58	Date and time of file creation	l1events	29930	Number of level 1 events
revision	3	Processing version of data			

### 2.1.4 Events

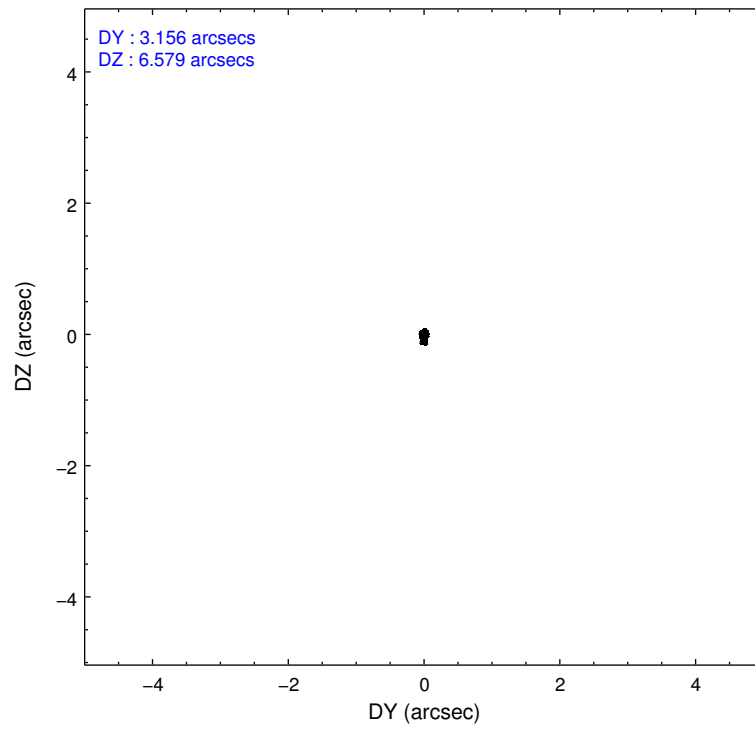
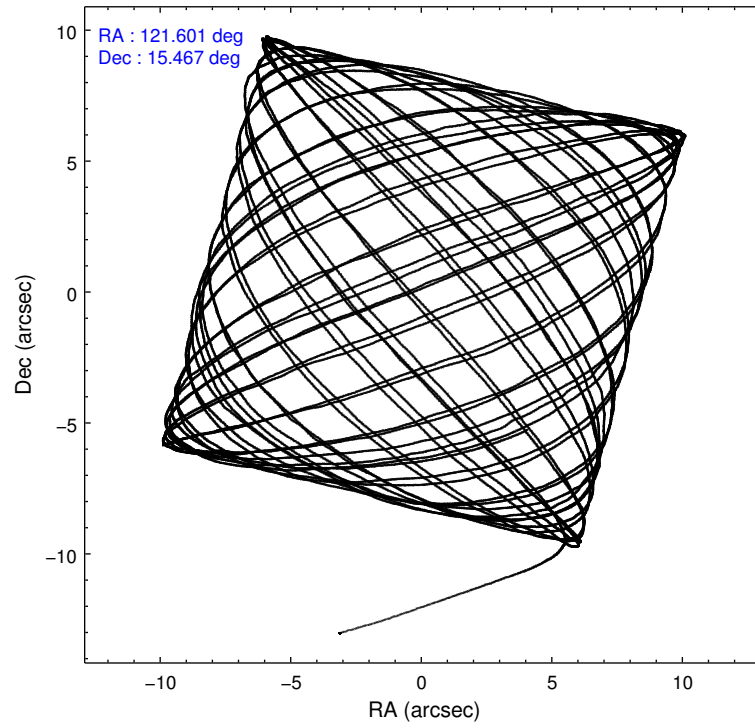
	<b>ccd 7</b>
level 1 events	29930
rejected events	12773
rejected %	42%

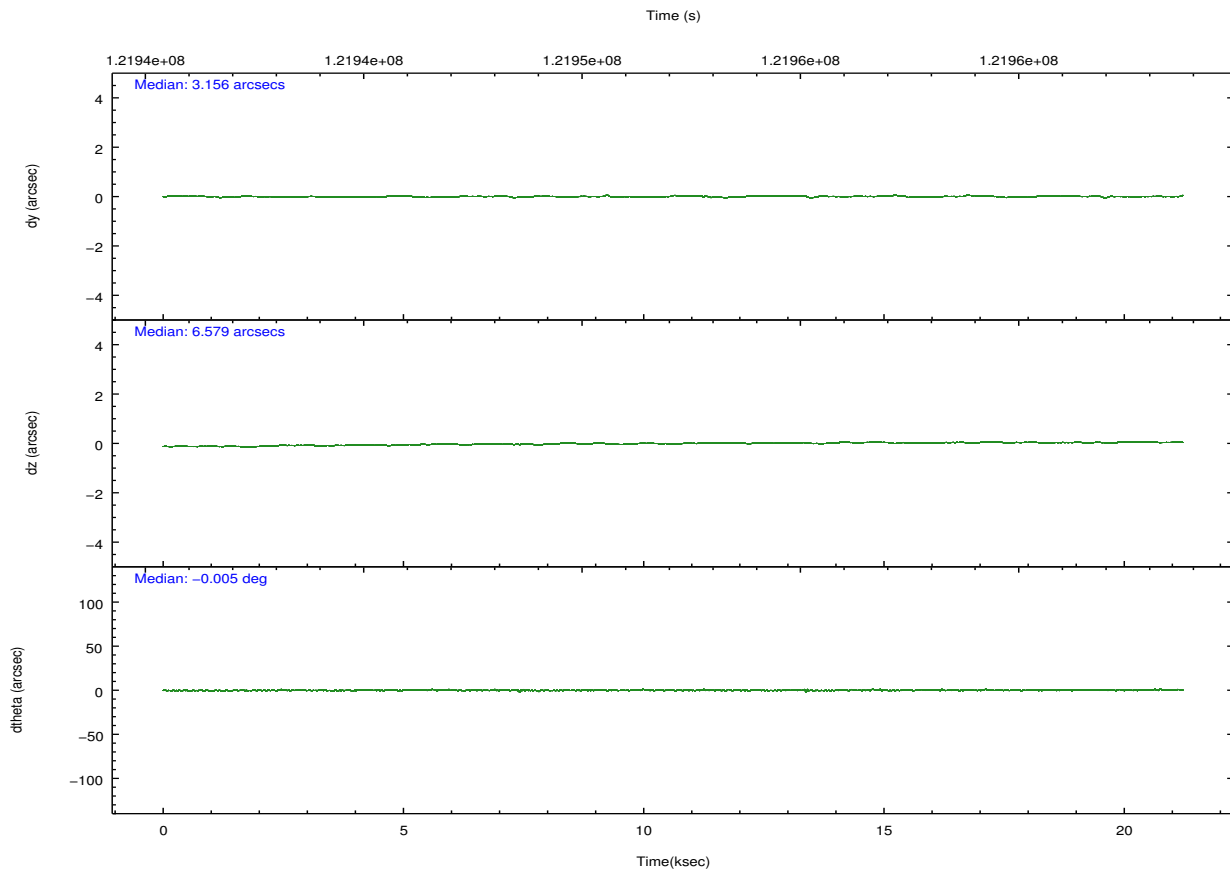
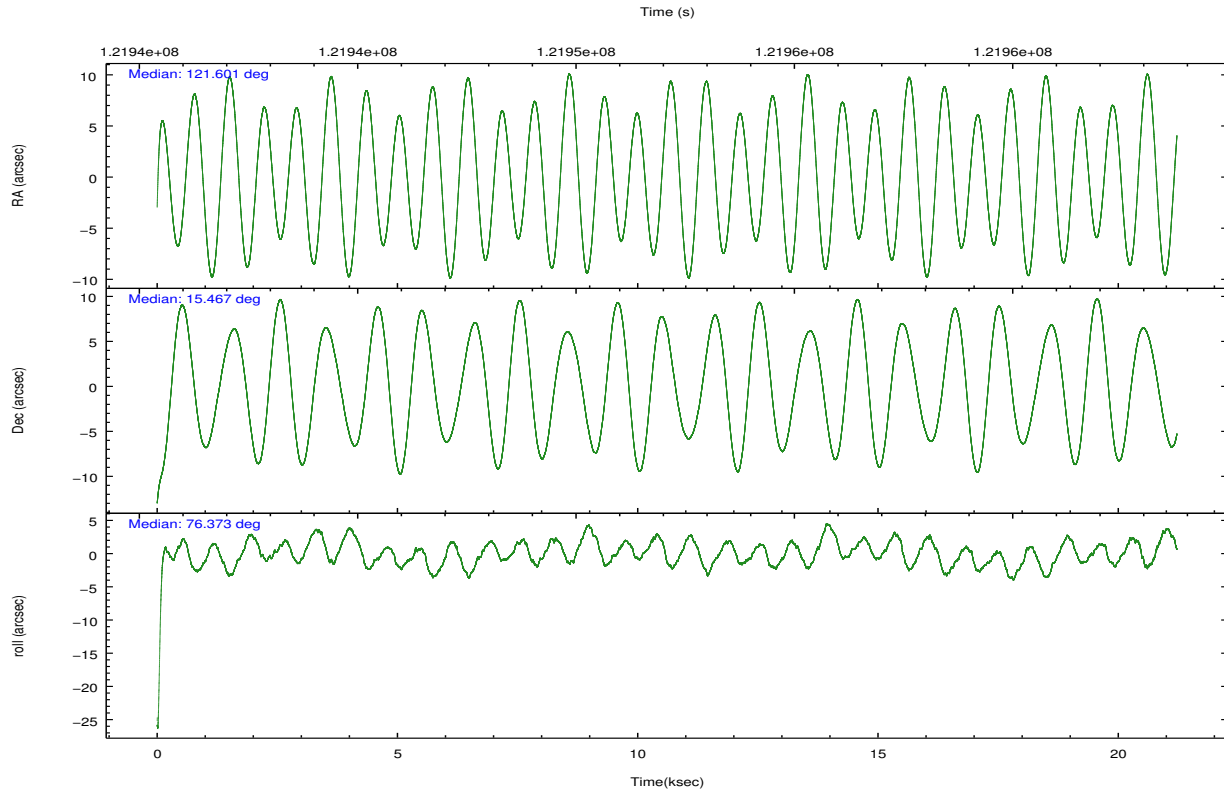
	<b>ccd 7</b>
grade 0 events	4993
	16%
grade 1 events	96
	0%
grade 2 events	3279
	10%
grade 3 events	1966
	6%
grade 4 events	1835
	6%
grade 5 events	2217
	7%
grade 6 events	5267
	17%
grade 7 events	10277
	34%

## 2.2 Compared Parameters

Parameter	Planned	Actual	Parameter	Planned	Actual
Instrument	ACIS	ACIS	Obspar format version number	7	7
Detector	ACIS-7	ACIS-7	Obspar file type	PREDICTED	ACTUAL
Grating	NONE	NONE	Obspar update status	NONE	UPDATED
Data mode	VFAINT	VFAINT	Number of optional ACIS chips dropped	0	0
Observation mode	POINTING	POINTING	On-chip summing requested	N	N
[deg] Pointing RA	121.609030	121.6007317212047	Subarray requested	CUSTOM	1/8
[deg] Pointing Dec	15.441279	15.46732256549948	Subarray start row	449	449
[deg] Pointing Roll	76.219491	76.37831272806341	Subarray row count	128	128
[mm] SIM focus pos	-0.684267	-0.6828225247311905	Alternating exposures requested	N	N
[mm] SIM defocus	0	0.001444936568705701	[s] Primary exposure time	0.000000	0.4
[mm] SIM translation stage pos	-190.132523	-190.1425803651734			
[mm] SIM translation stage offset	0	0.01005778216563158			
[s] Observation start time (MET)	121942094.184000	121940918.99011			
Observation start date	2001-11-12T08:47:10	2001-11-12T08:28:38			
[s] Observation end time (MET)	121962694.184000	121964279.25354			
Observation end date	2001-11-12T14:30:30	2001-11-12T14:57:59			
Read mode	TIMED	TIMED			

## 2.3 Aspect



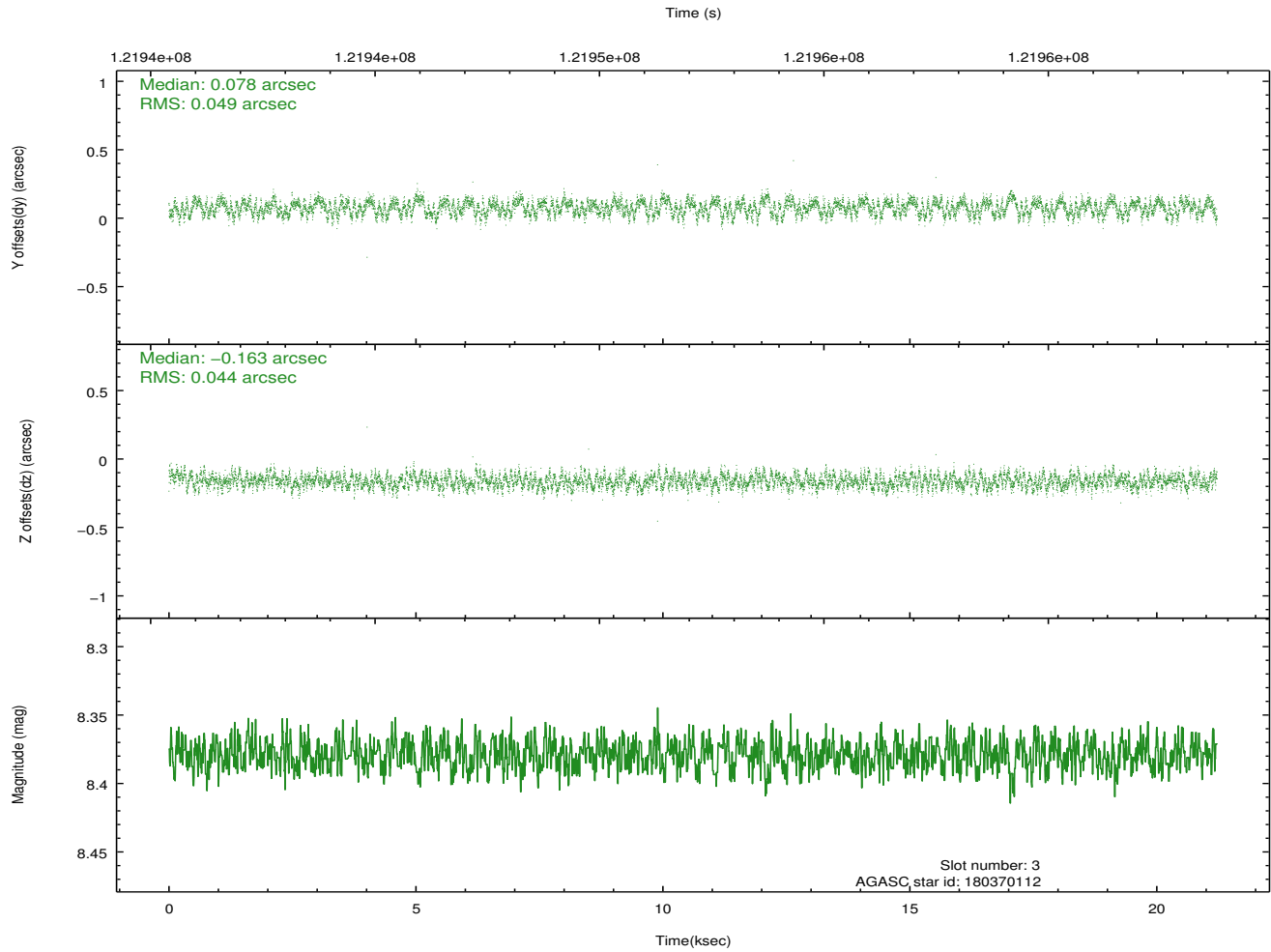
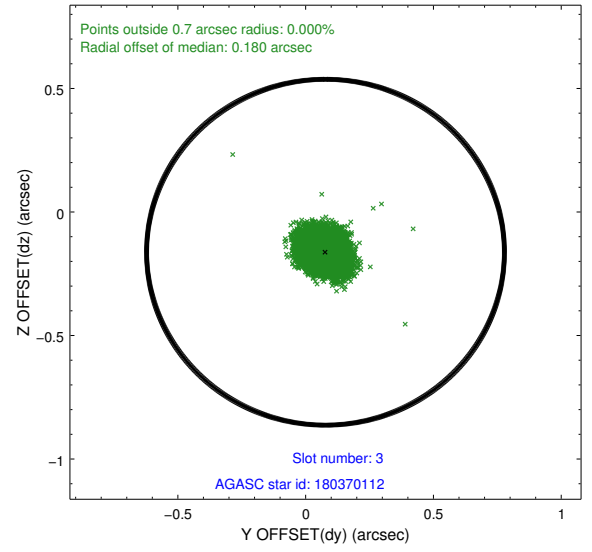
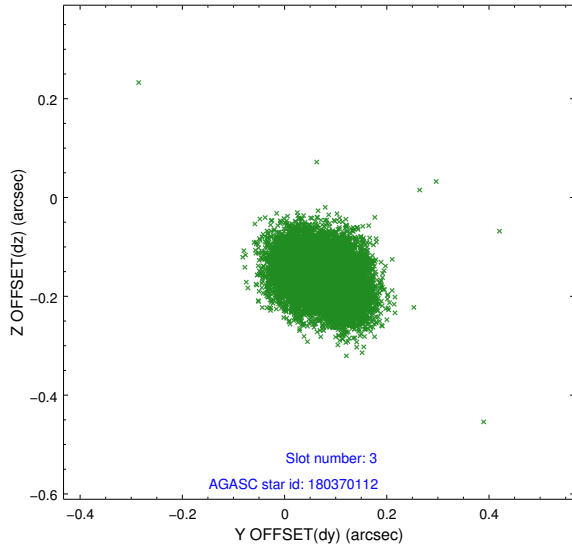


### Slot Statistics

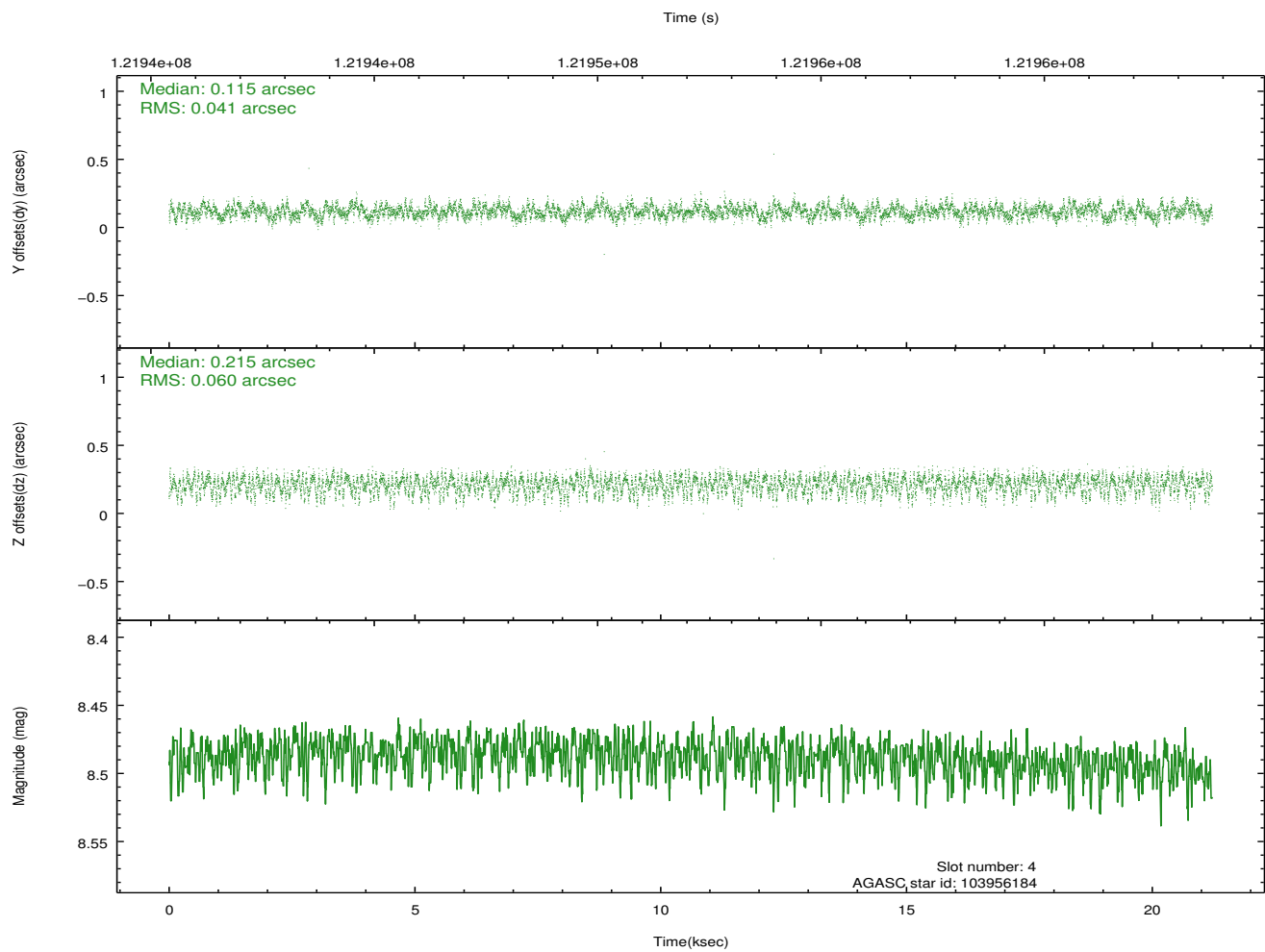
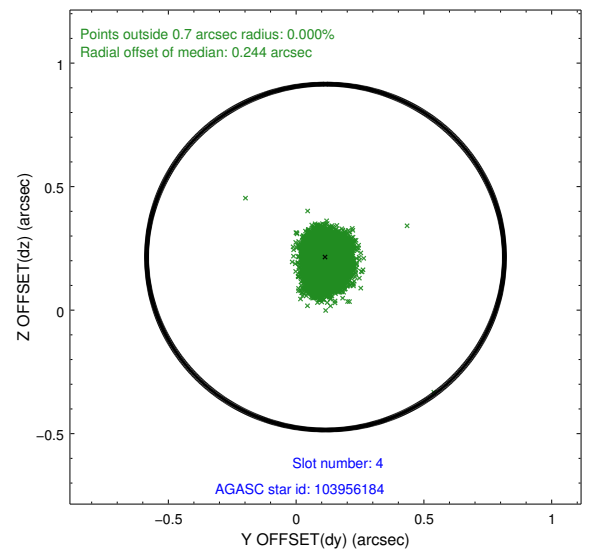
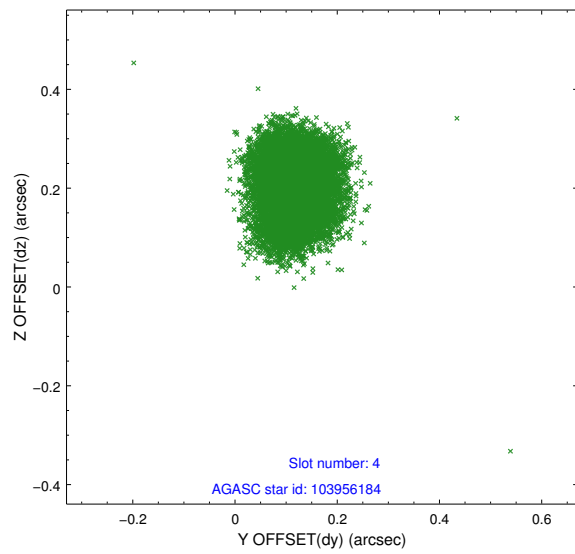
slot	status	id	mag	n_pts	med_dy	med_dz	dr1	dr2	ra	dec	mean_y	mean_z
0	FID	ACIS-S-2	7.11	5176	-0.025	0.011	0.007	0.012	0.000000	0.000000	-755.80	-1727.66
1	FID	ACIS-S-4	7.20	5176	-0.018	0.009	0.005	0.011	0.000000	0.000000	2157.38	180.69
2	FID	ACIS-S-5	7.24	5175	0.012	-0.011	0.007	0.012	0.000000	0.000000	-1808.42	174.47
3	GUIDE	180370112	8.38	10351	0.078	-0.163	0.072	0.110	121.144488	15.364256	-652.63	1500.97
4	GUIDE	103956184	8.49	10352	0.115	0.215	0.077	0.124	122.093586	14.853591	-1651.47	-2140.46
5	GUIDE	103954656	8.81	10346	0.065	0.294	0.078	0.123	122.085217	14.992315	-1173.80	-1992.42
6	GUIDE	180367416	9.14	10352	-0.005	-0.460	0.084	0.137	120.920648	15.525818	-270.11	2392.20
7	GUIDE	180359160	9.59	10350	-0.256	0.119	0.101	0.160	121.837257	16.020694	2213.81	-269.03

## 2.4 Star Slots

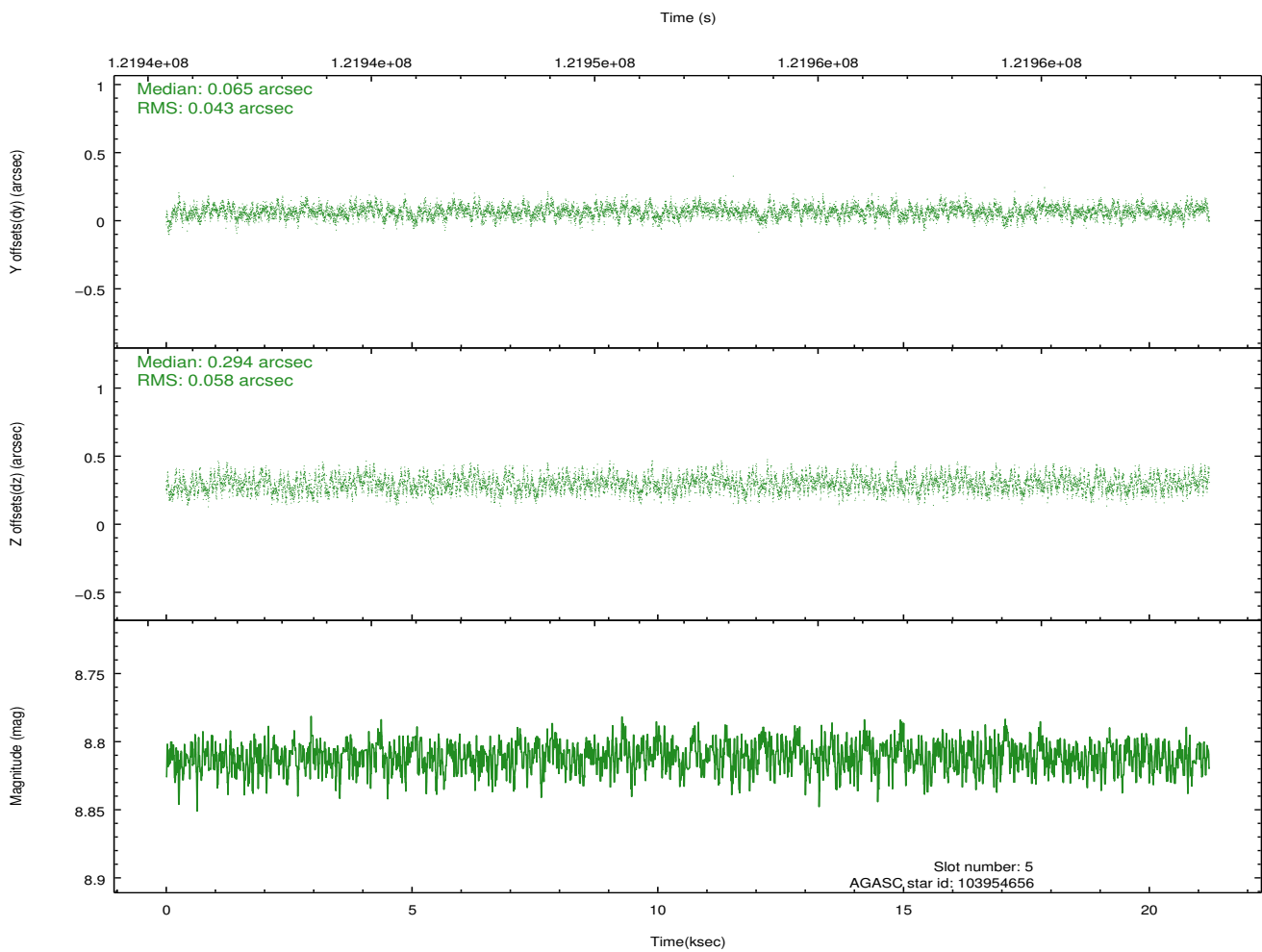
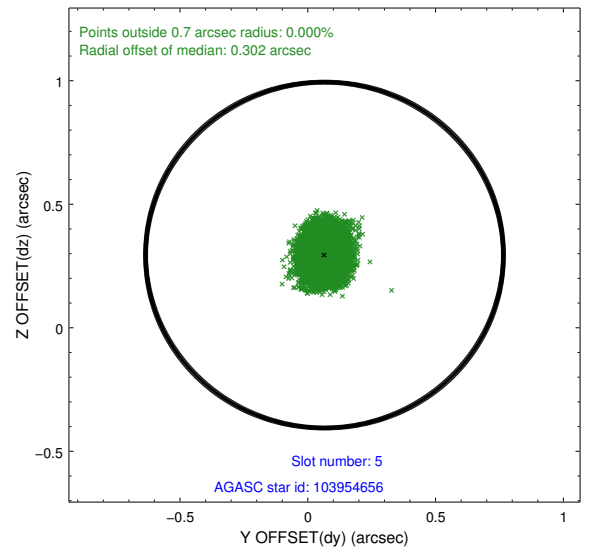
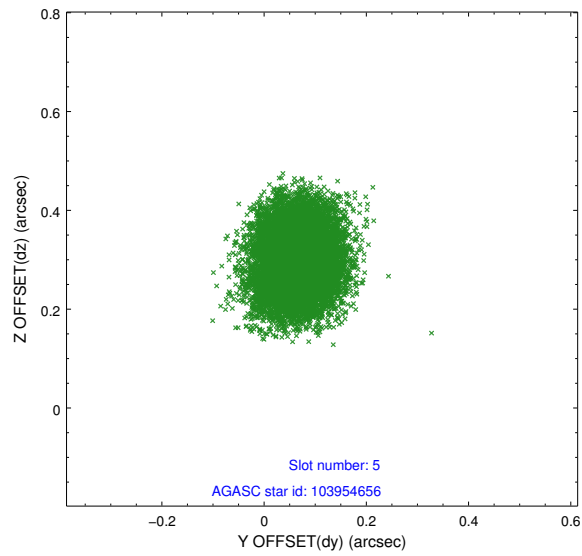
### 2.4.1 Slot 3



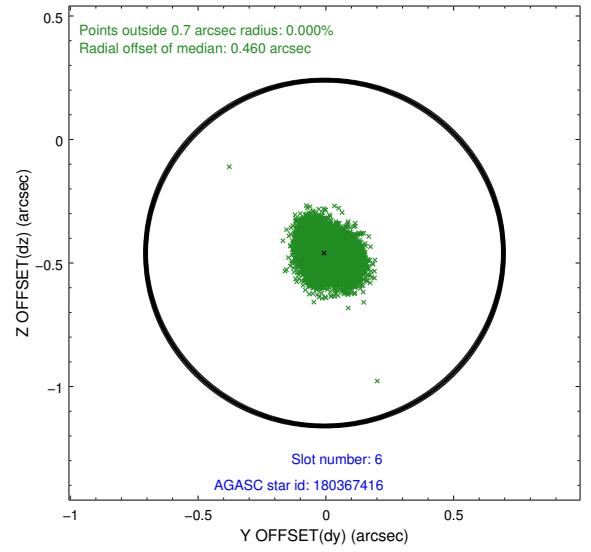
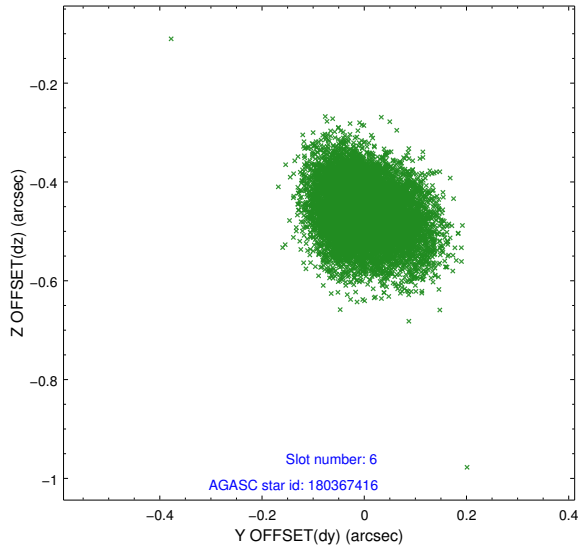
## 2.4.2 Slot 4



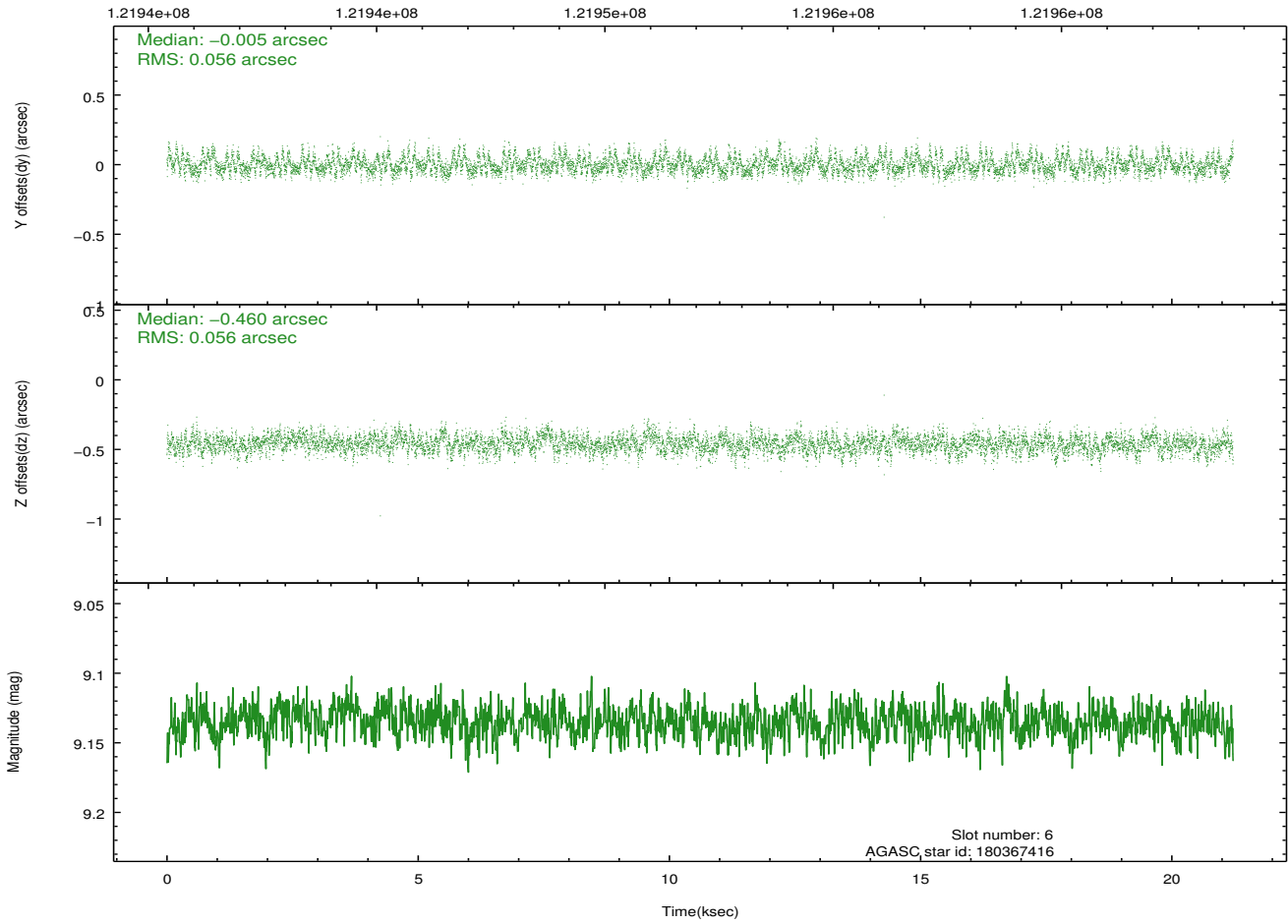
### 2.4.3 Slot 5



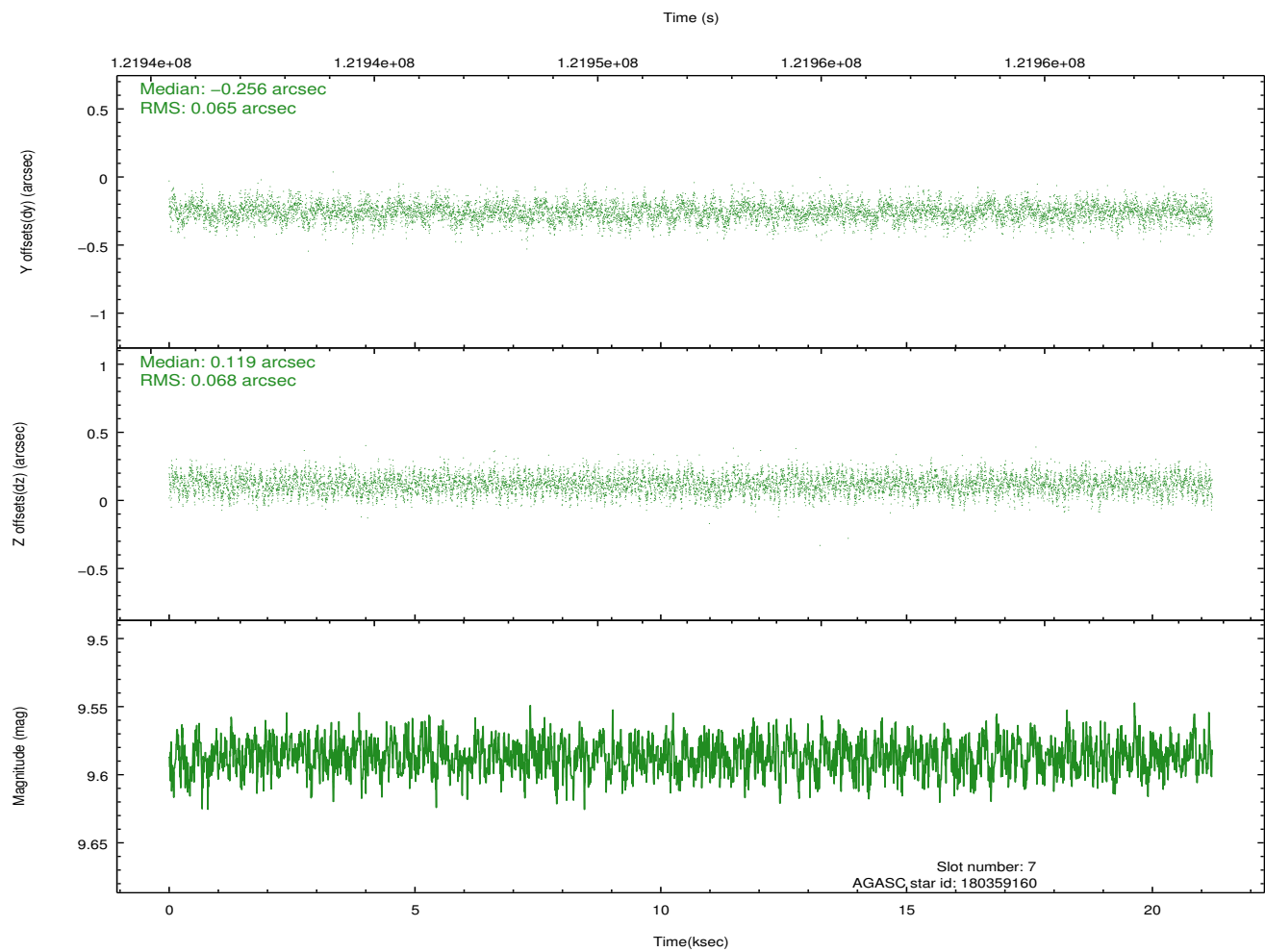
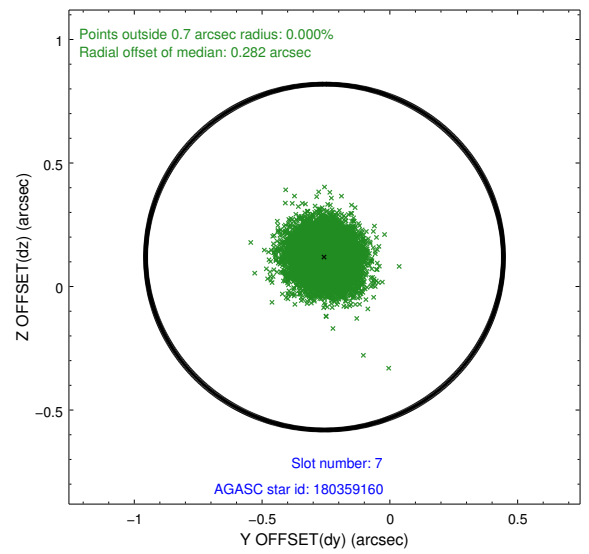
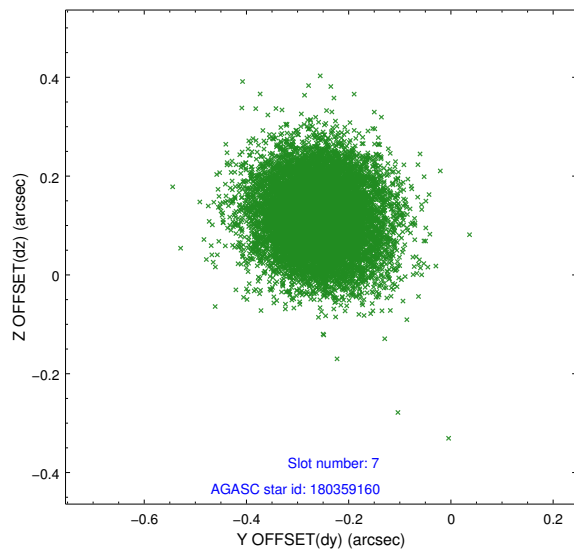
### 2.4.4 Slot 6



Time (s)

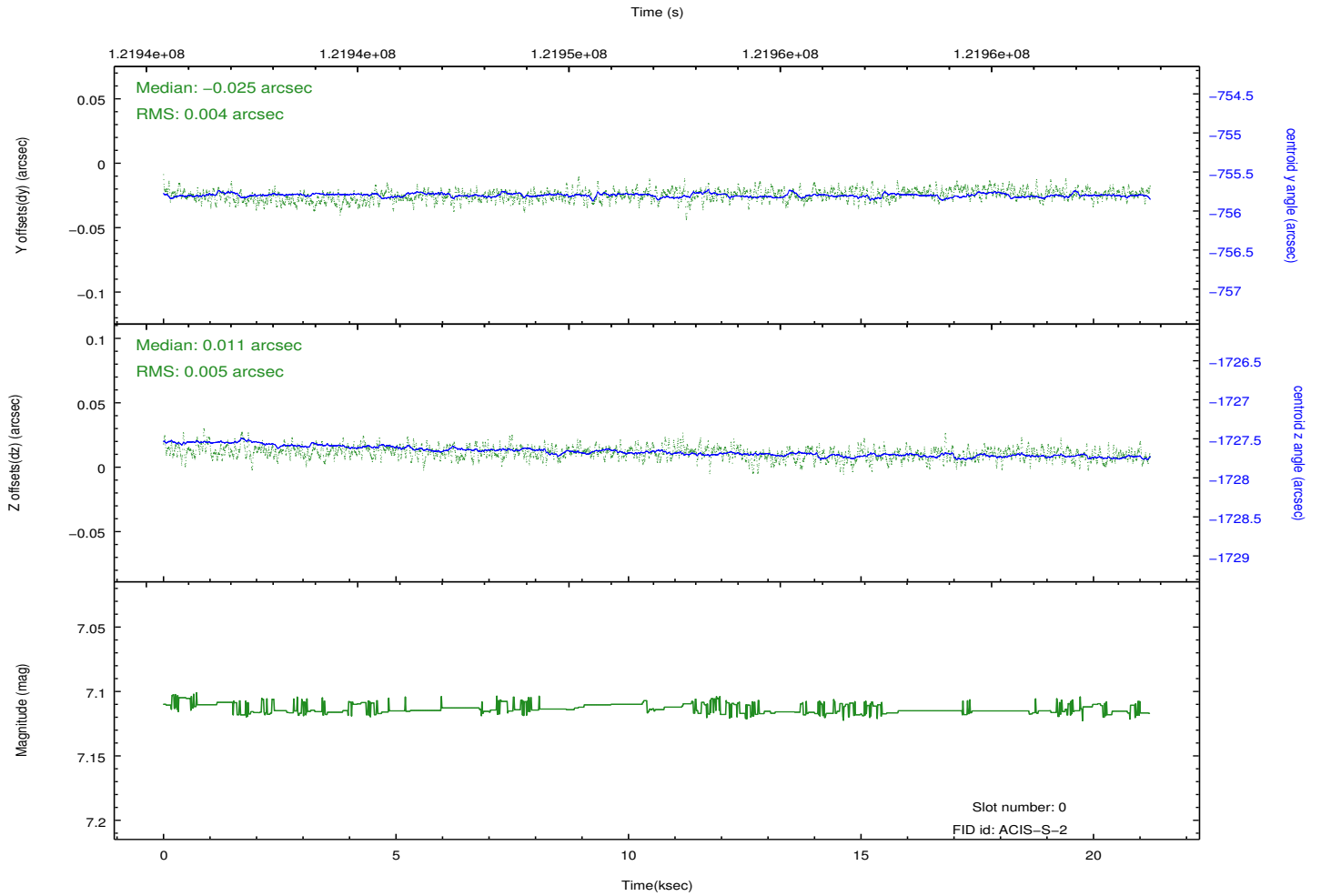
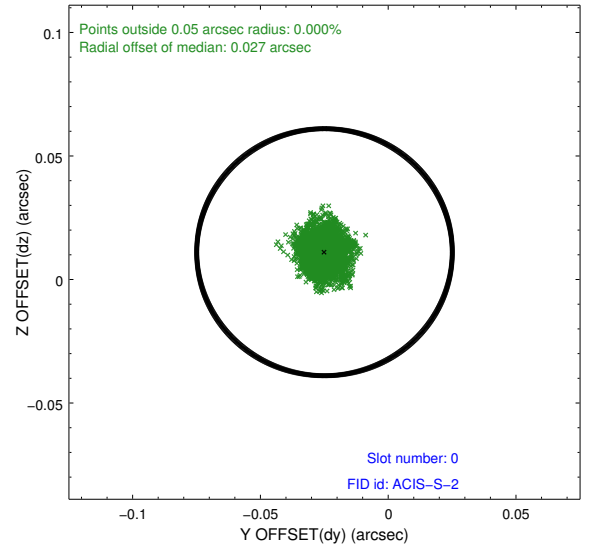
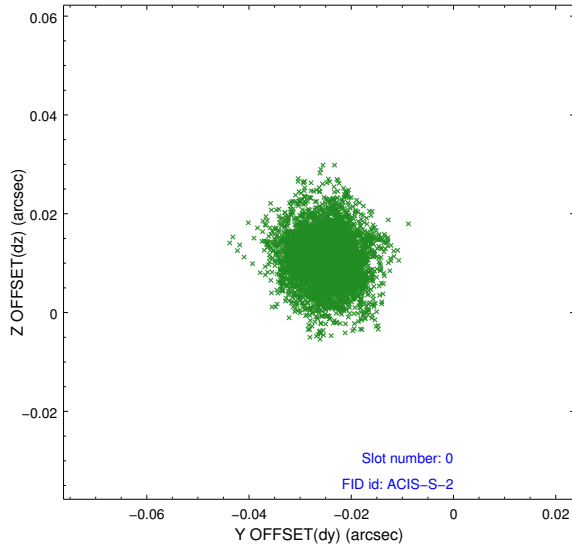


## 2.4.5 Slot 7

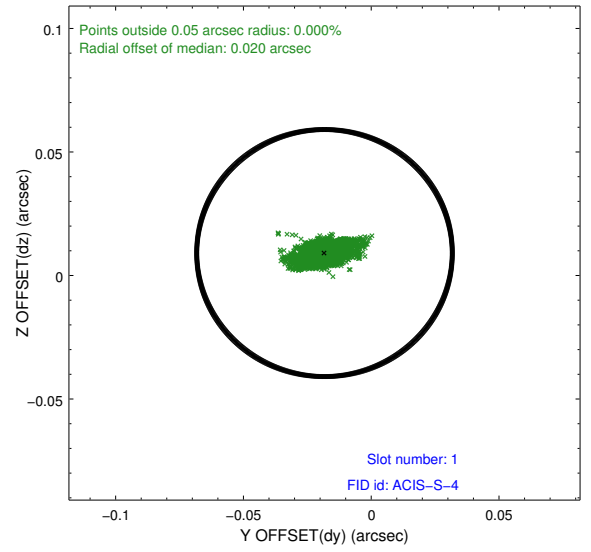
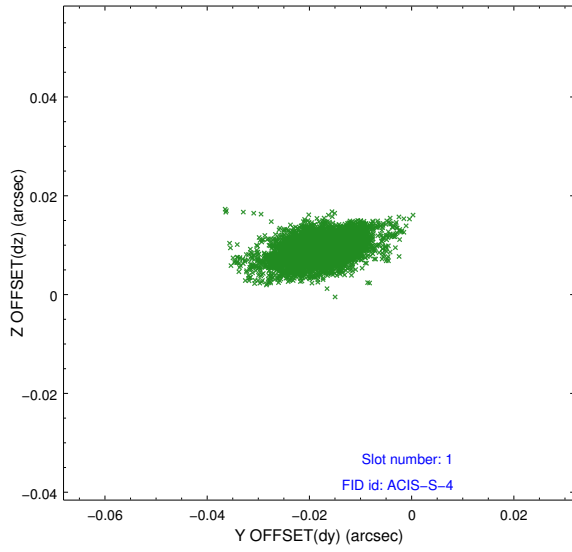


## 2.5 FID Slots

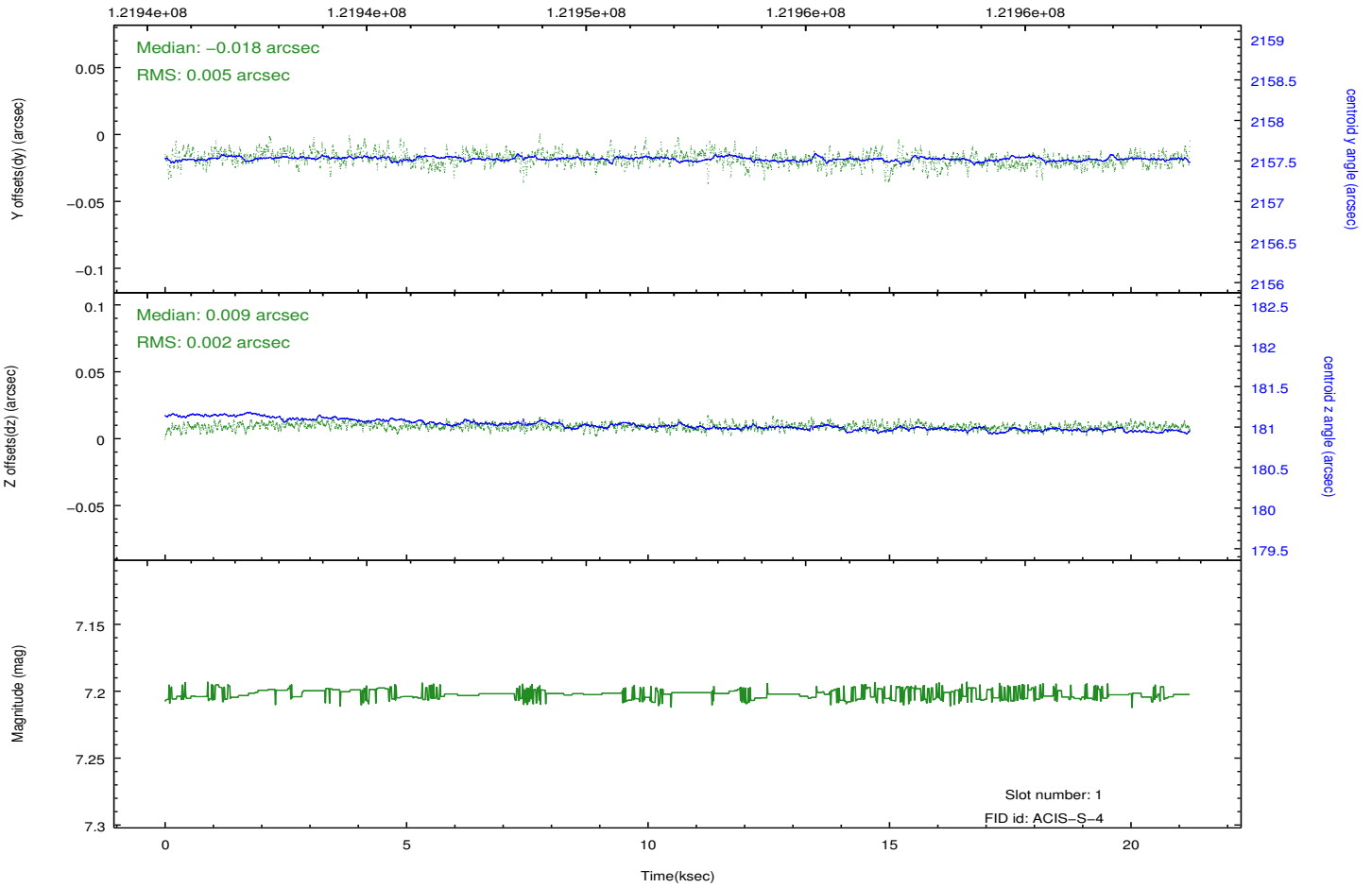
### 2.5.1 Slot 0



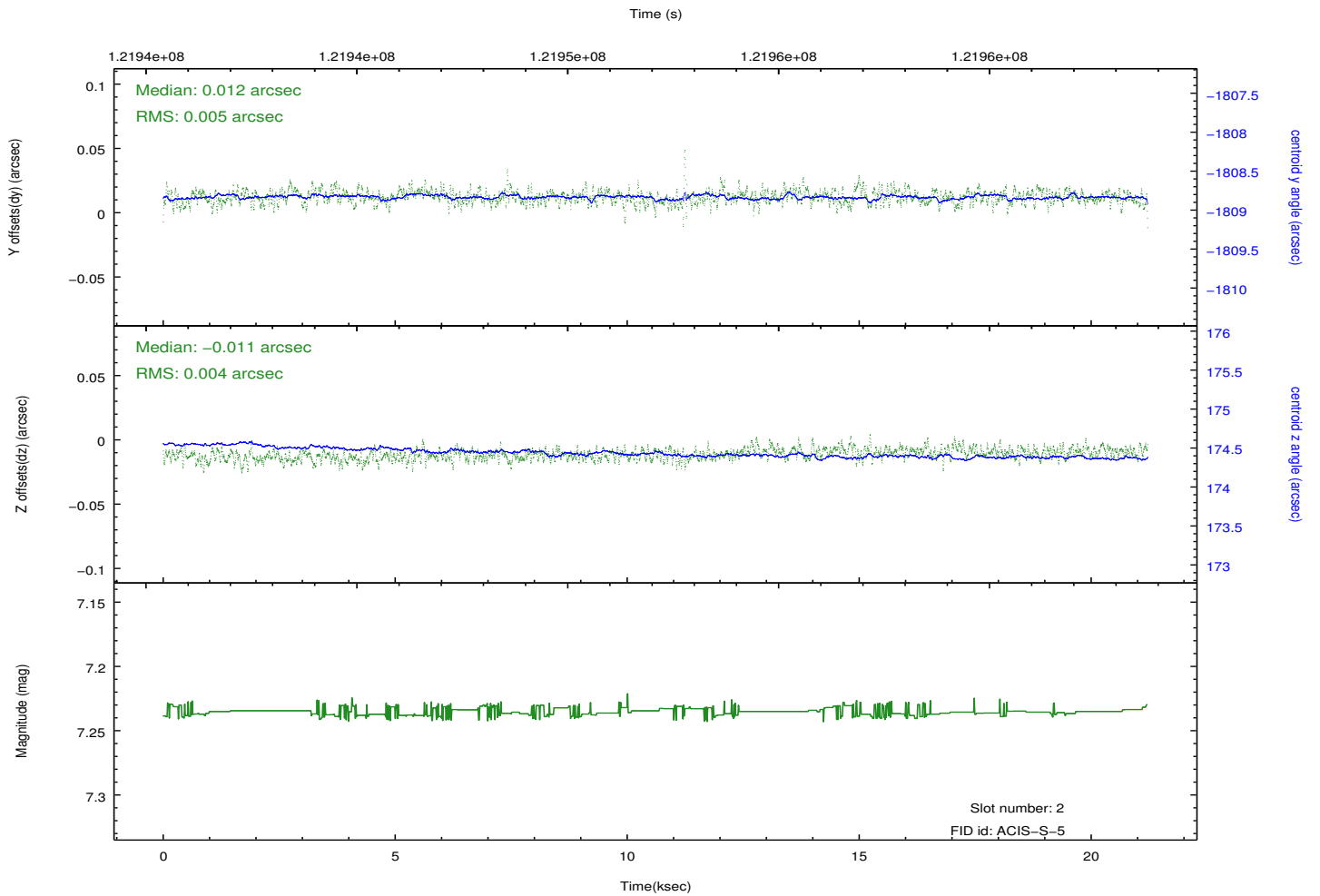
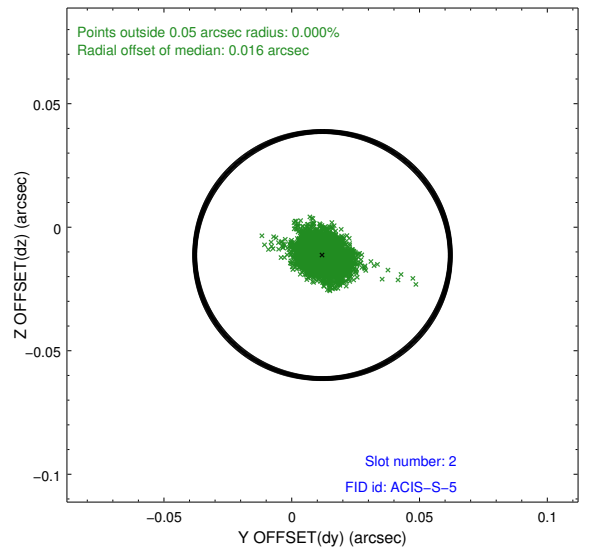
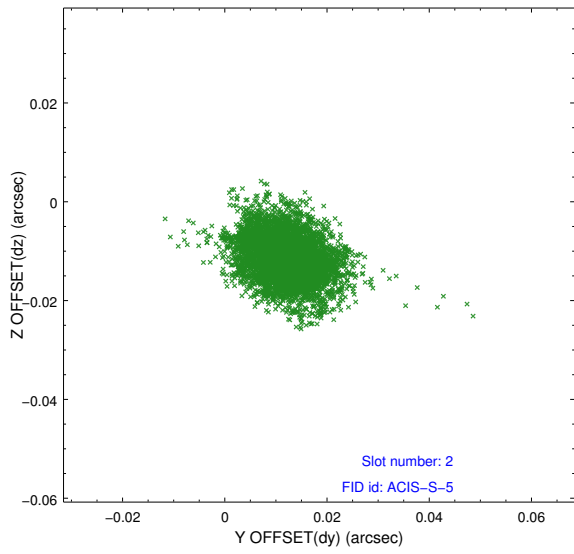
## 2.5.2 Slot 1



Time (s)



### 2.5.3 Slot 2



# A Summary

## A.1 Status

V&V Scientist	Jen Lauer
V&V Date (YYYY-MM-DD)	2012.09.28
V&V Edition	1
V&V Disposition and Status	OK
V&V Charge Time	21.22

## A.2 Comments