

# V&V Reference Report

## L2 ASCDS Version : 8.4.5

Observation 3185 - L2 Version 3  
Chandra X-Ray Center

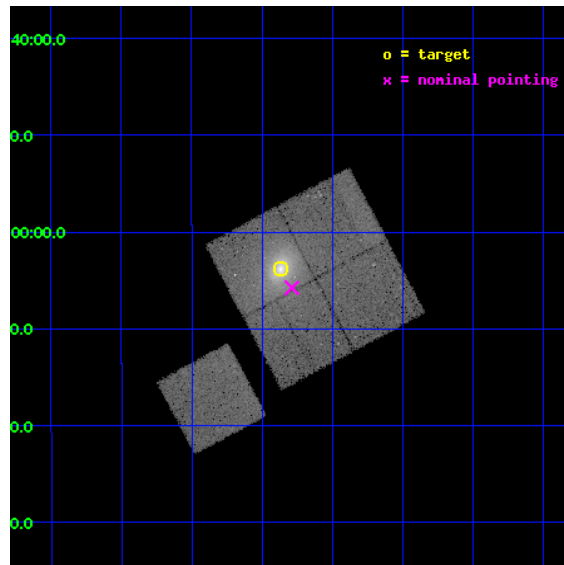
L2 Processing Date : Oct 9 2012

## Contents

<b>1</b>	<b>Front</b>	<b>2</b>
<b>2</b>	<b>OBI</b>	<b>3</b>
2.1	OBI . . . . .	3
2.1.1	Images . . . . .	3
2.1.2	Bias . . . . .	3
2.1.3	Parameters . . . . .	4
2.1.4	Events . . . . .	4
2.2	Compared Parameters . . . . .	5
2.3	Aspect . . . . .	6
2.4	Star Slots . . . . .	9
2.4.1	Slot 3 . . . . .	9
2.4.2	Slot 4 . . . . .	10
2.4.3	Slot 5 . . . . .	11
2.4.4	Slot 6 . . . . .	12
2.4.5	Slot 7 . . . . .	13
2.5	FID Slots . . . . .	14
2.5.1	Slot 0 . . . . .	14
2.5.2	Slot 1 . . . . .	15
2.5.3	Slot 2 . . . . .	16
<b>A</b>	<b>Summary</b>	<b>17</b>
A.1	Status . . . . .	17
A.2	Comments . . . . .	17

# 1 Front

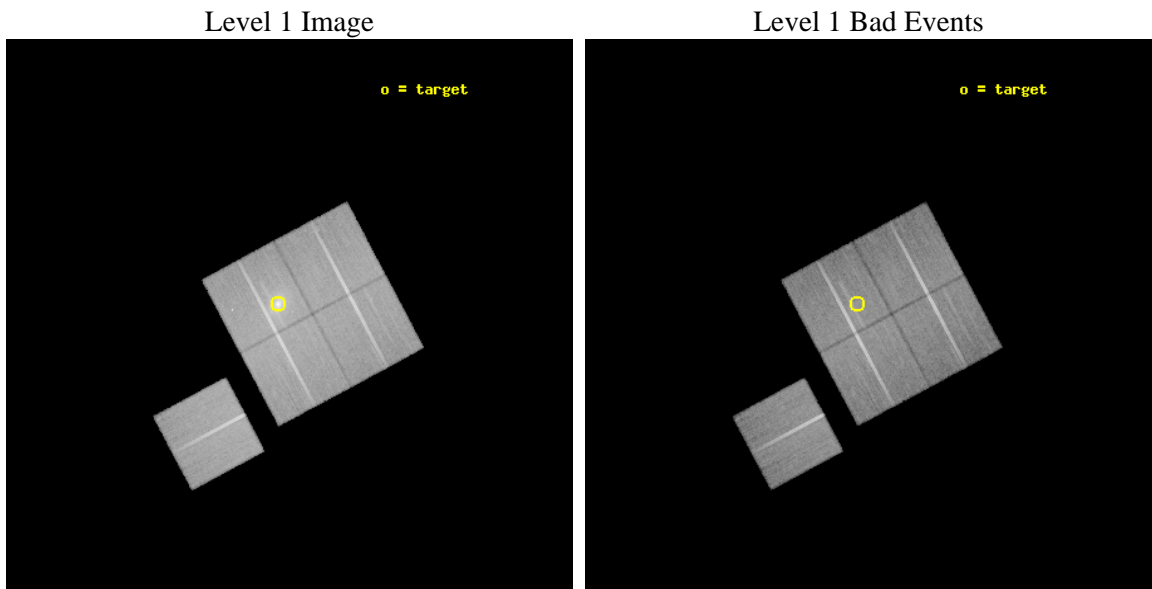
seq_num	800185	Sequence number
obs_id	3185	Observation id
title	A DETAILED STUDY OF THE CLUSTER A907	Proposal title
observer	Dr. Stephen Murray	Principal investigator
object	A907	Source name
dtycle	0	&#160
cycle	P	events from which exps? Prim/Second/Both
ra_targ	149.591667	Observer's specified target RA [deg]
dec_targ	-11.064	Observer's specified target Dec [deg]
ra_nom	149.57188025109	Nominal RA [deg]
dec_nom	-11.096278306375	Nominal Dec [deg]
roll_nom	241.93303524045	Nominal Roll [deg]
revision	3	Processing version of data
ontime	48669.87701565	Sum of GTIs [s]
liveltime	48033.969242199	Livetime [s]
ontime0	48679.299906373	Sum of GTIs [s]
ontime1	48673.017975867	Sum of GTIs [s]
ontime2	48666.736015558	Sum of GTIs [s]
ontime3	48669.87701565	Sum of GTIs [s]
ontime6	48676.158936173	Sum of GTIs [s]
l2events	167740	Number of level 2 events



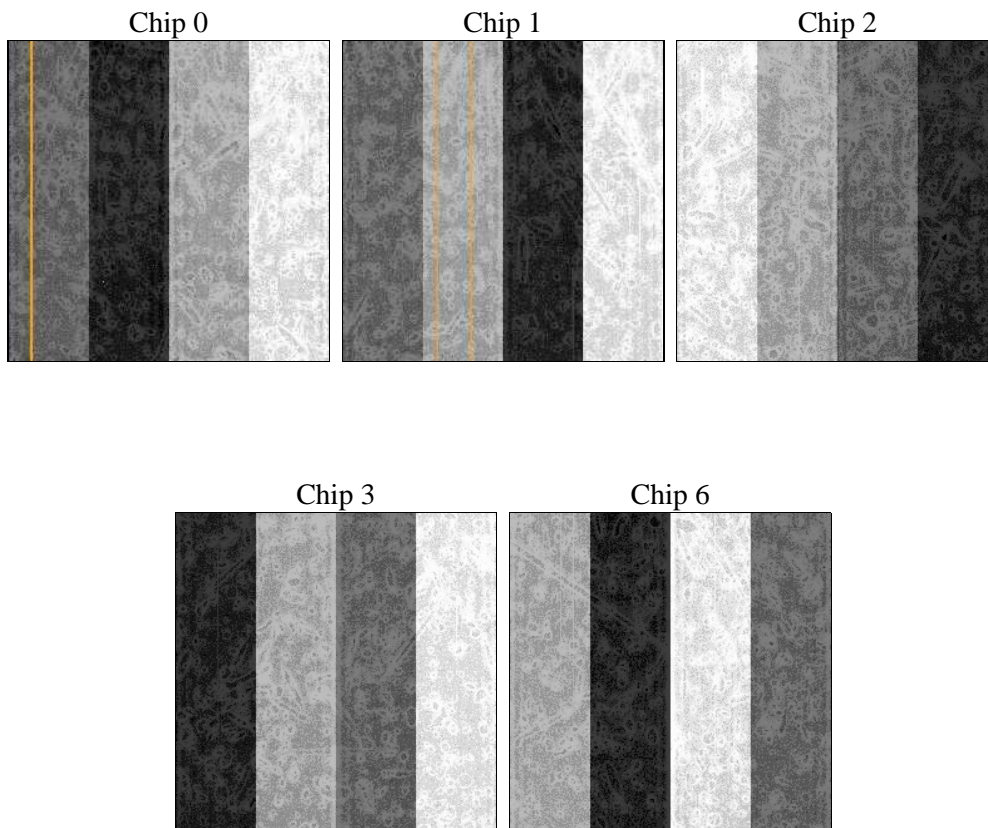
## 2 OBI

### 2.1 OBI

#### 2.1.1 Images



#### 2.1.2 Bias



### 2.1.3 Parameters

obi_num	0	Obi number	sched_exp_time	48500.000000	[s] Scheduled observation exposure time
ascdsver	8.4.5	Processing system revision	ontime	48669.87701565	Sum of GTIs [s]
caldsver	4.5.2	&#160	ontime0	48679.299906373	Sum of GTIs [s]
date	2012-10-09T05:53:58	Date and time of file creation	ontime1	48673.017975867	Sum of GTIs [s]
revision	3	Processing version of data	ontime2	48666.736015558	Sum of GTIs [s]
			ontime3	48669.87701565	Sum of GTIs [s]
			ontime6	48676.158936173	Sum of GTIs [s]
			l1events	1372654	Number of level 1 events

### 2.1.4 Events

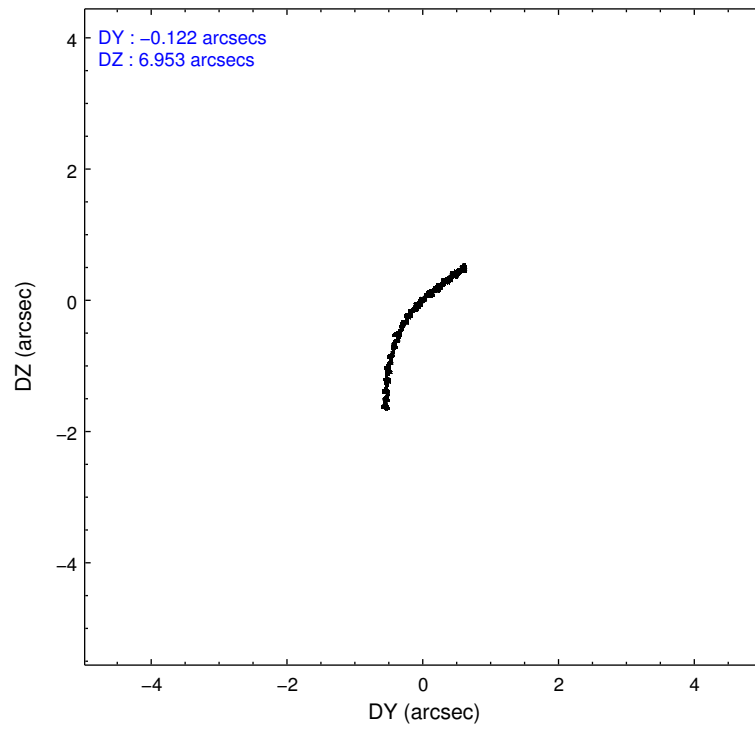
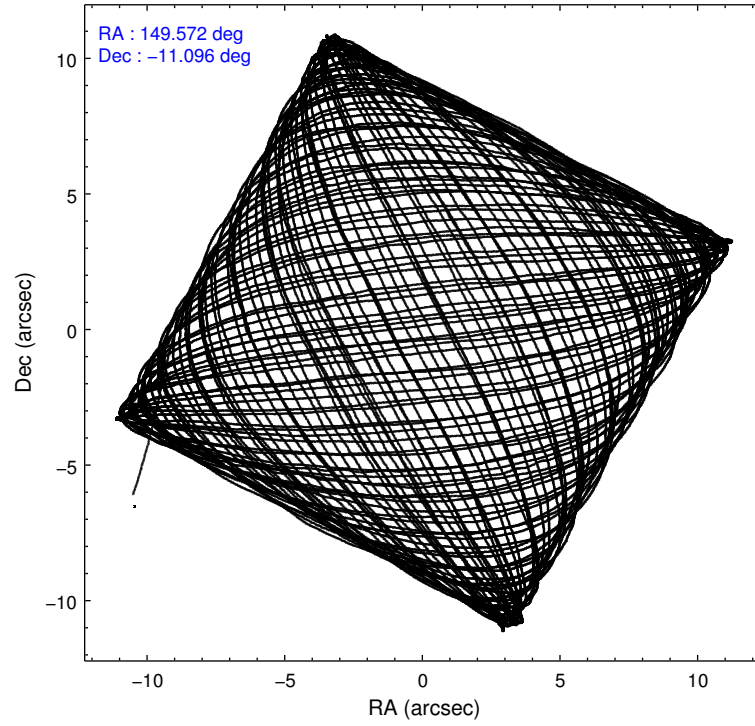
	ccd 0	ccd 1	ccd 2	ccd 3	ccd 6
level 1 events	248155	250299	277869	325878	270453
rejected events	221936	219268	250410	244342	244165
rejected %	89%	87%	90%	74%	90%

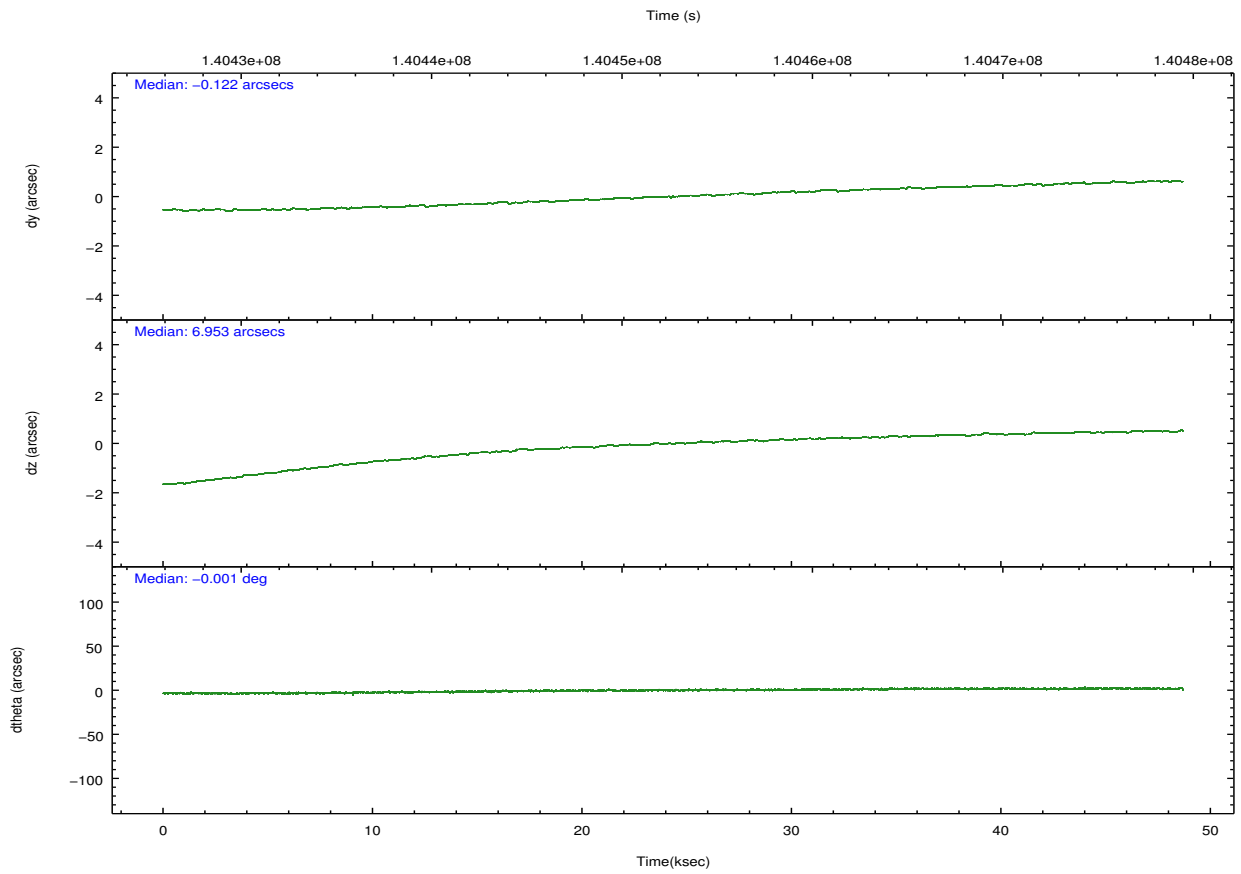
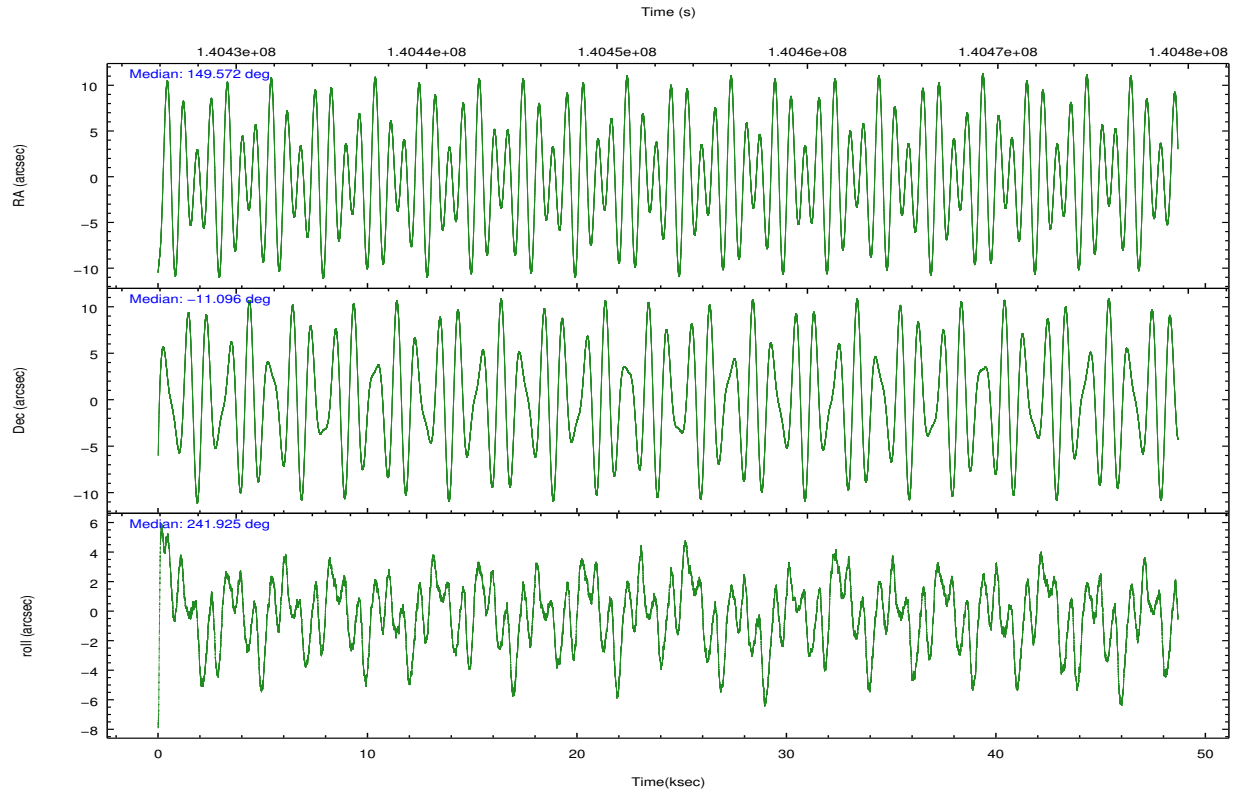
	ccd 0	ccd 1	ccd 2	ccd 3	ccd 6
grade 0 events	9334	12461	10937	55786	9024
	3%	4%	3%	17%	3%
grade 1 events	87	119	92	312	119
	0%	0%	0%	0%	0%
grade 2 events	6031	6312	6114	10963	5649
	2%	2%	2%	3%	2%
grade 3 events	3170	3487	2872	4460	3238
	1%	1%	1%	1%	1%
grade 4 events	2838	3350	2880	4478	2992
	1%	1%	1%	1%	1%
grade 5 events	8802	9327	8157	9671	9881
	3%	3%	2%	2%	3%
grade 6 events	5072	5726	4906	6248	5625
	2%	2%	1%	1%	2%
grade 7 events	212821	209517	241911	233960	233925
	85%	83%	87%	71%	86%

## 2.2 Compared Parameters

Parameter	Planned	Actual	Parameter	Planned	Actual
Instrument	ACIS	ACIS	Obspar format version number	7	7
Detector	ACIS-01236	ACIS-01236	Obspar file type	PREDICTED	ACTUAL
Grating	NONE	NONE	Obspar update status	NONE	UPDATED
Data mode	VFAINT	VFAINT	Number of optional ACIS chips dropped	0	0
Observation mode	POINTING	POINTING	On-chip summing requested	N	N
[deg] Pointing RA	149.570846	149.571880251088	Subarray requested	NONE	NONE
[deg] Pointing Dec	-11.068910	-11.09627830637464	Alternating exposures requested	N	N
[deg] Pointing Roll	241.724154	241.9330352404489	[s] Primary exposure time	0.000000	3.1
[mm] SIM focus pos	-0.782348	-0.7809083437167272			
[mm] SIM defocus	0	0.001439871863259334			
[mm] SIM translation stage pos	-227.592463	-227.5958210972112			
[mm] SIM translation stage offset	-6	-5.996631905718488			
[s] Observation start time (MET)	140428526.184000	140427312.36243			
Observation start date	2002-06-14T07:54:22	2002-06-14T07:35:12			
[s] Observation end time (MET)	140477026.184000	140477511.22698			
Observation end date	2002-06-14T21:22:42	2002-06-14T21:31:51			
Read mode	TIMED	TIMED			

## 2.3 Aspect





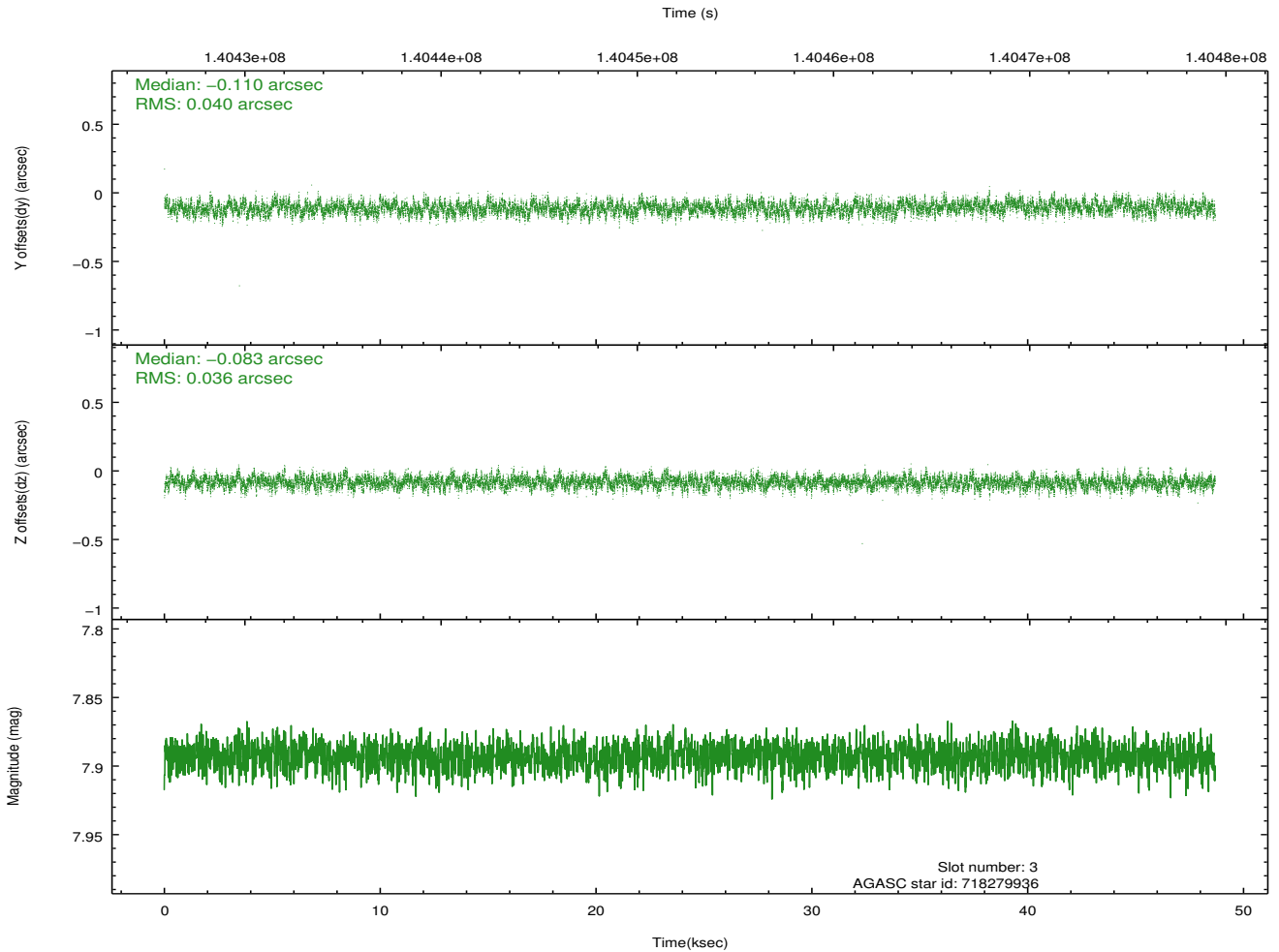
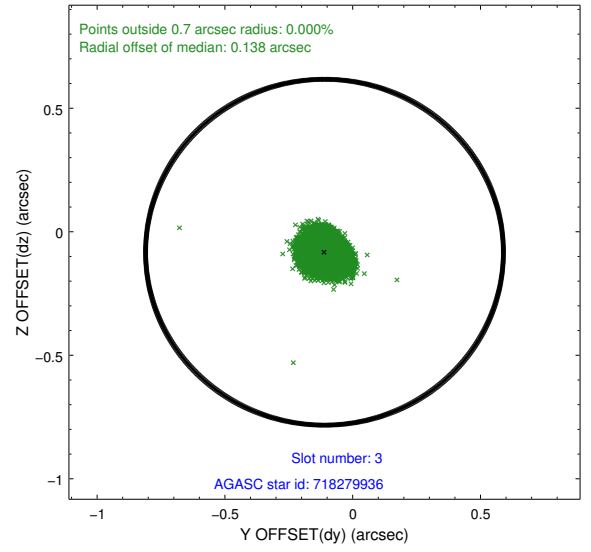
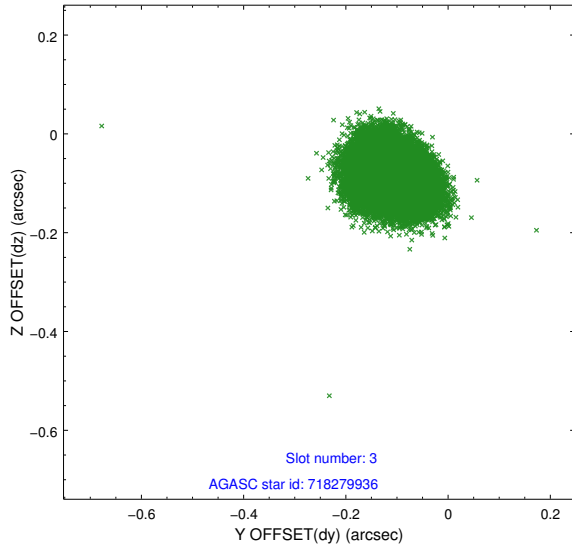
### Slot Statistics

slot	status	id	mag	n_pts	med_dy	med_dz	dr1	dr2	ra	dec	mean_y	mean_z
0	FID	ACIS-I-1	7.24	11873	0.055	-0.029	0.023	0.051	0.000000	0.000000	939.91	-953.27
1	FID	ACIS-I-5	7.23	11872	-0.177	0.064	0.021	0.031	0.000000	0.000000	-1808.39	944.36
2	FID	ACIS-I-6	7.25	11872	0.041	0.039	0.023	0.035	0.000000	0.000000	405.52	1588.78
3	GUIDE	718279936	7.89	23747	-0.110	-0.083	0.058	0.093	149.904611	-10.701814	-1721.69	414.07
4	GUIDE	718149728	8.94	23742	0.164	-0.098	0.066	0.107	148.975070	-11.248777	1570.00	-1544.47
5	GUIDE	718280536	9.75	23723	-0.183	0.129	0.130	0.211	150.321636	-10.752976	-2255.99	1801.54
6	GUIDE	718281352	9.60	23730	0.091	0.112	0.123	0.196	150.146622	-10.890852	-1526.22	1490.18
7	GUIDE	718150168	7.01	23744	0.036	-0.062	0.068	0.110	148.806680	-11.034344	1174.01	-2434.84

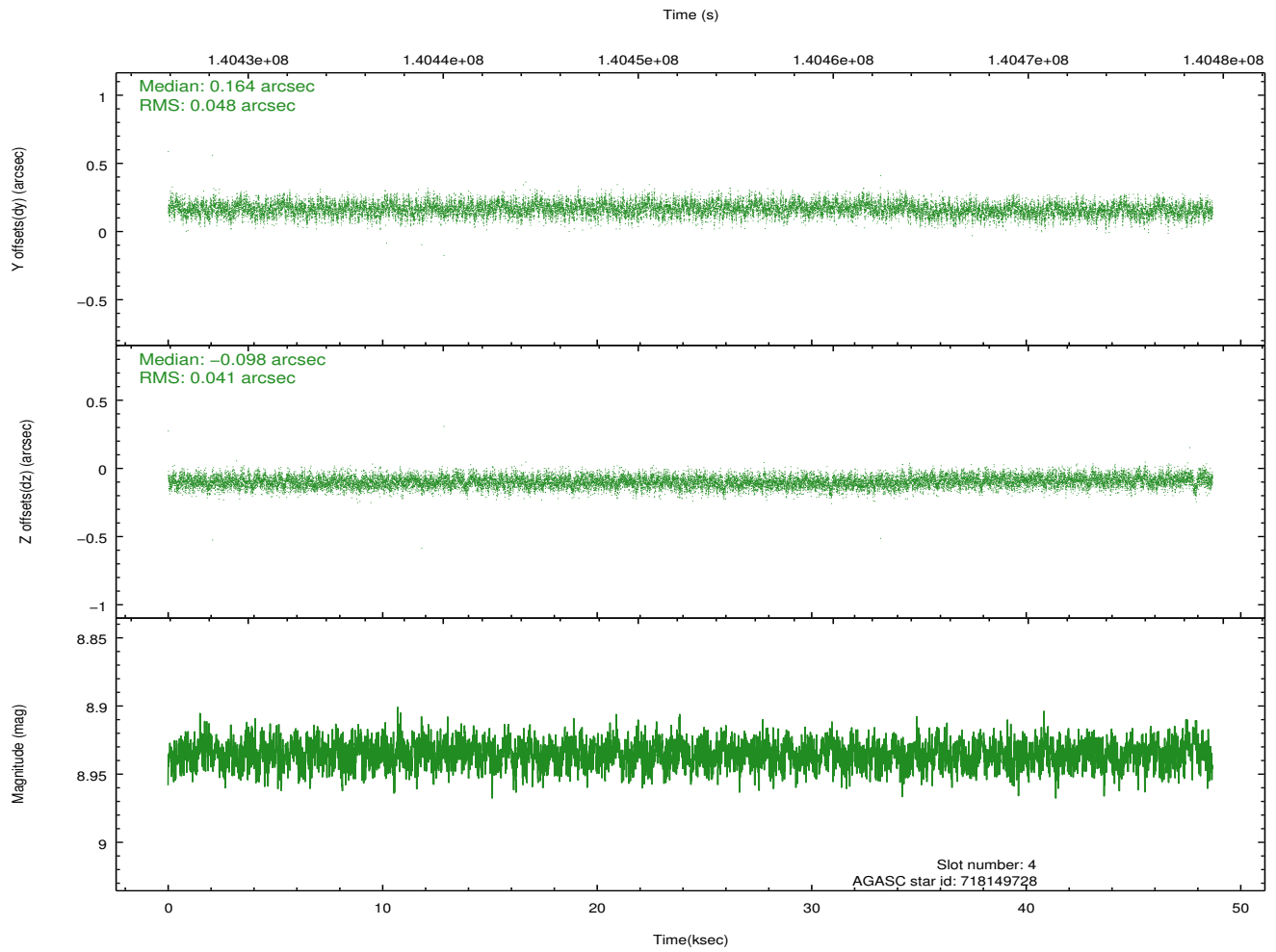
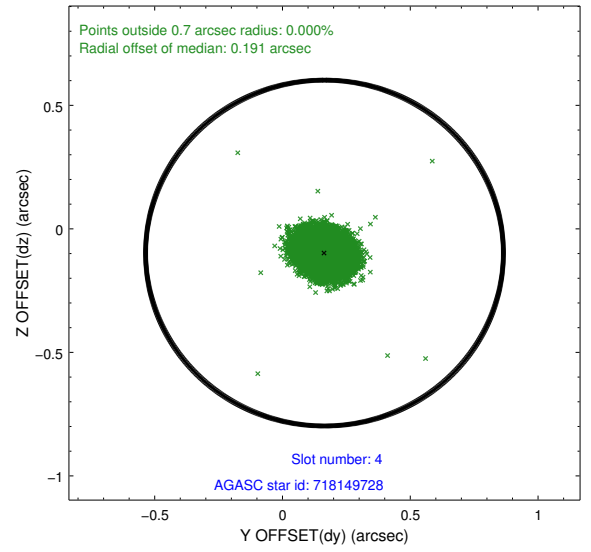
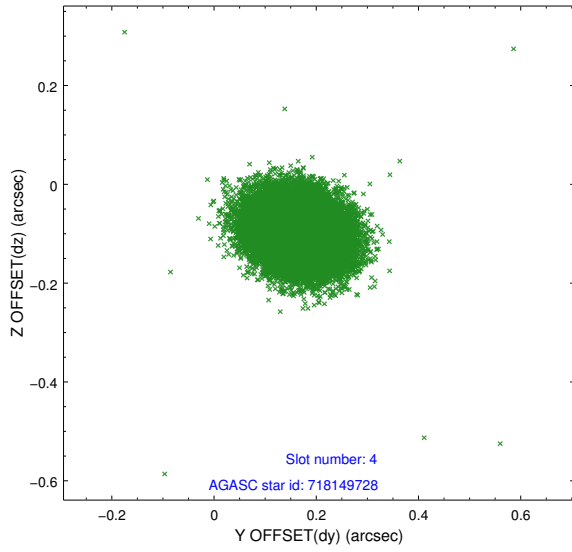
∞

## 2.4 Star Slots

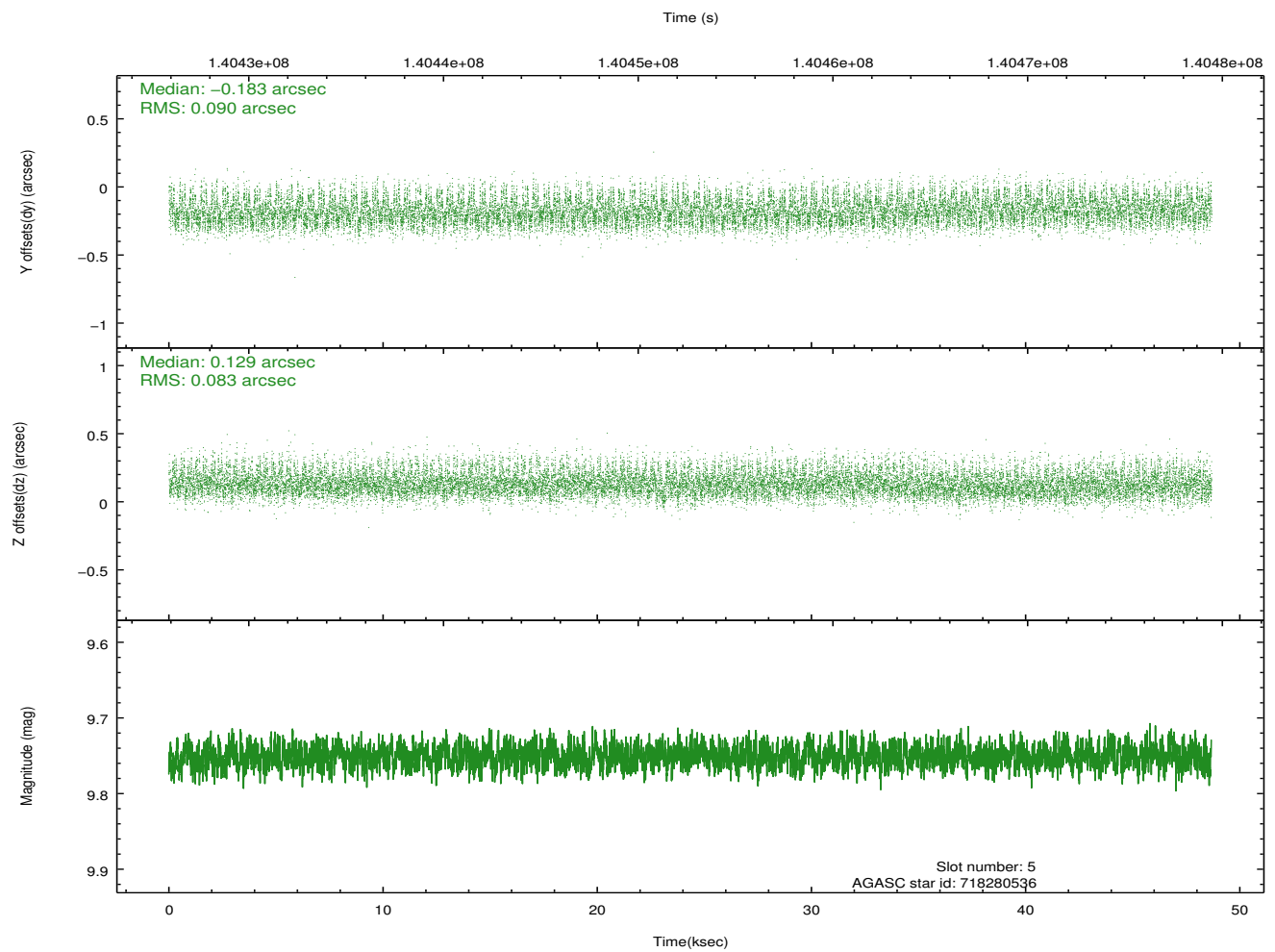
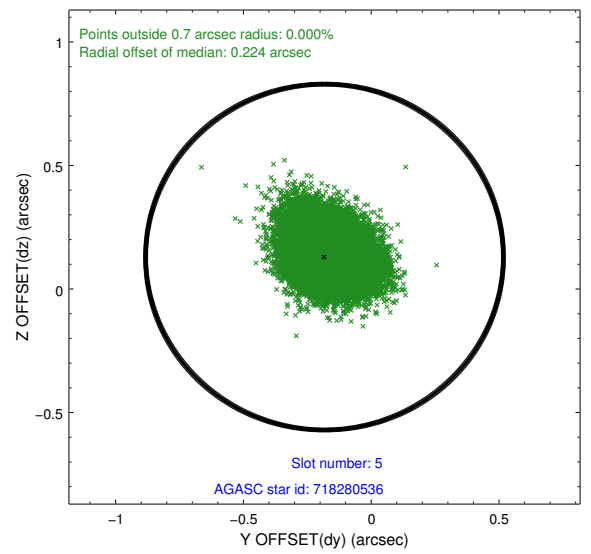
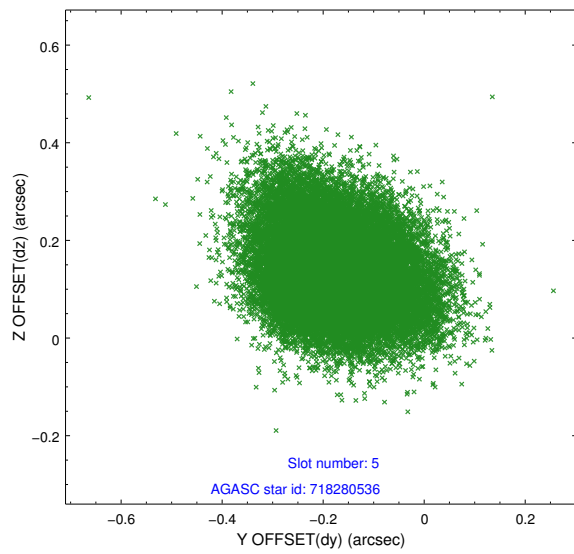
### 2.4.1 Slot 3



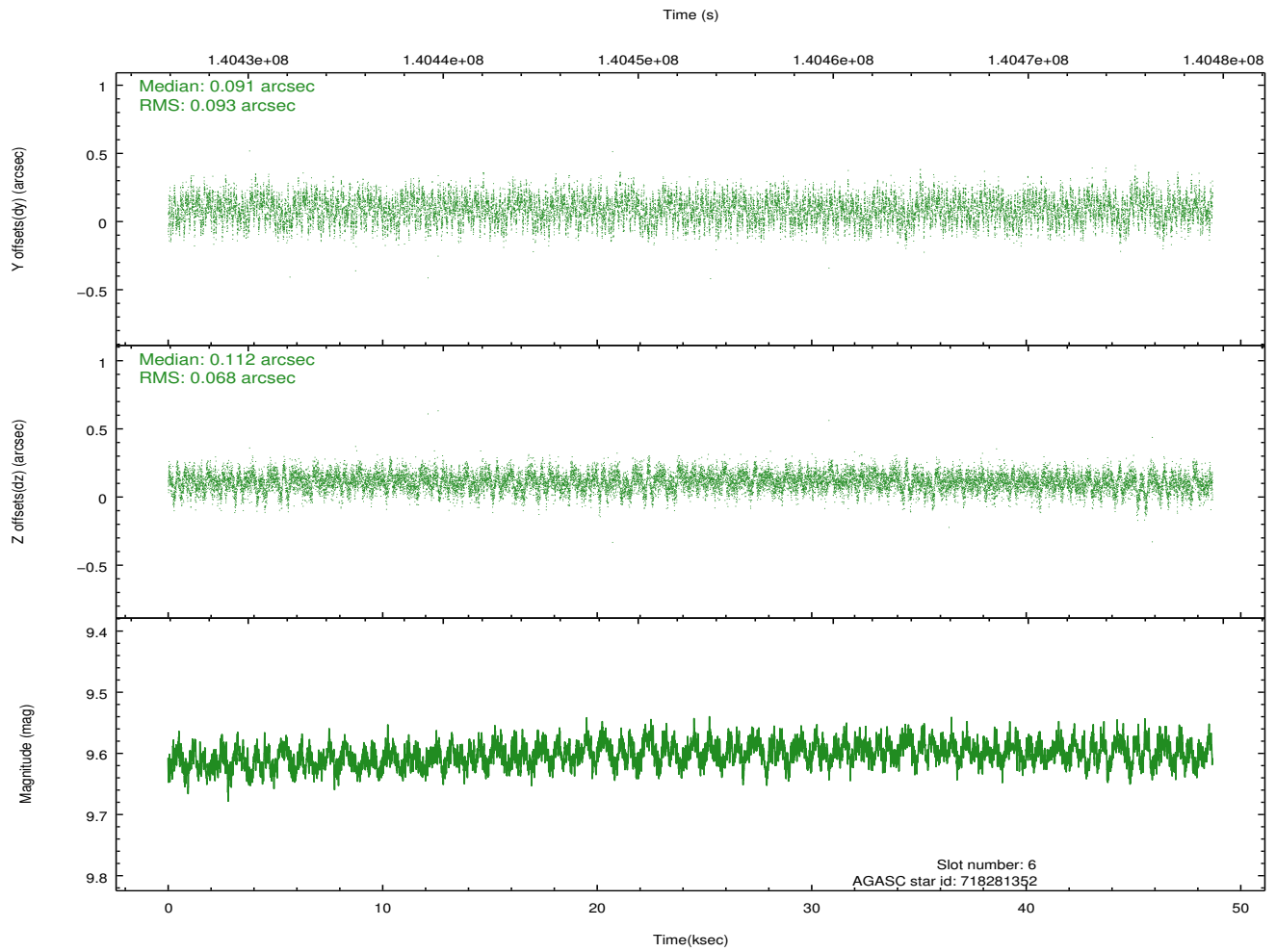
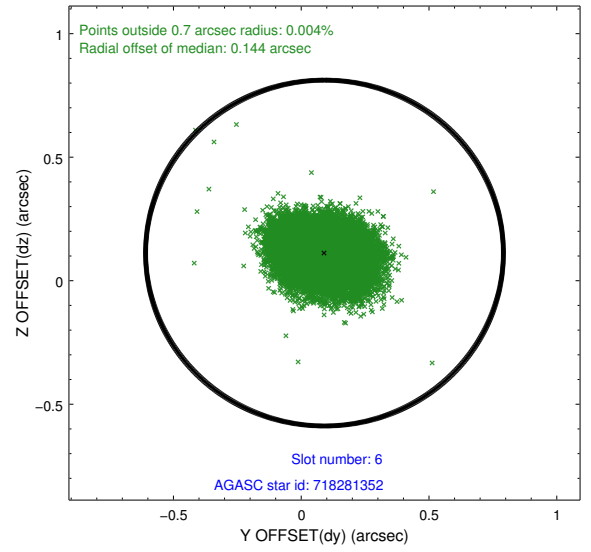
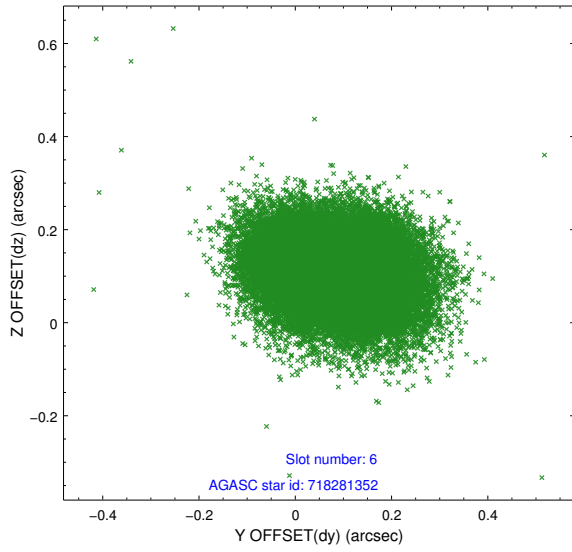
## 2.4.2 Slot 4



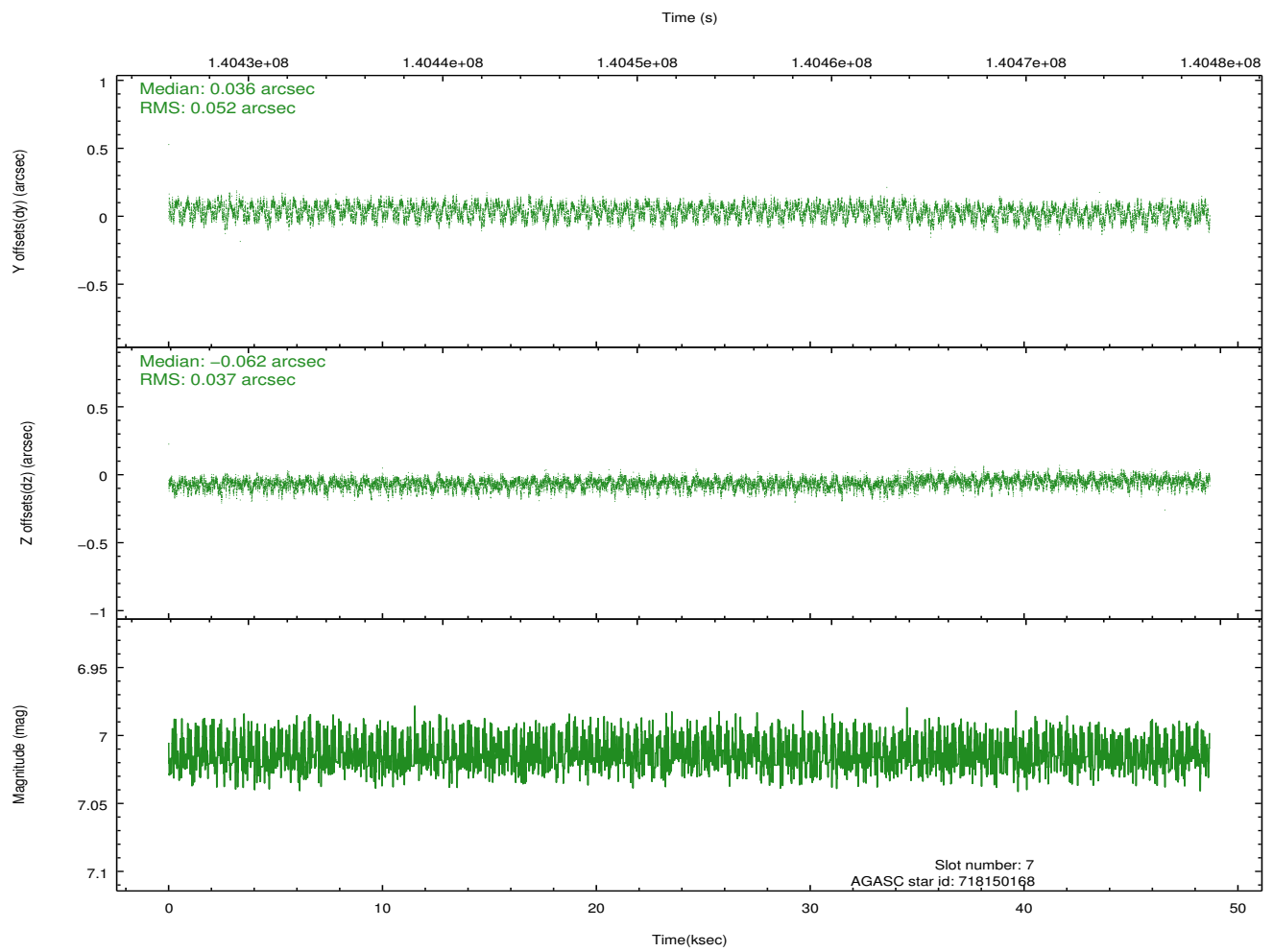
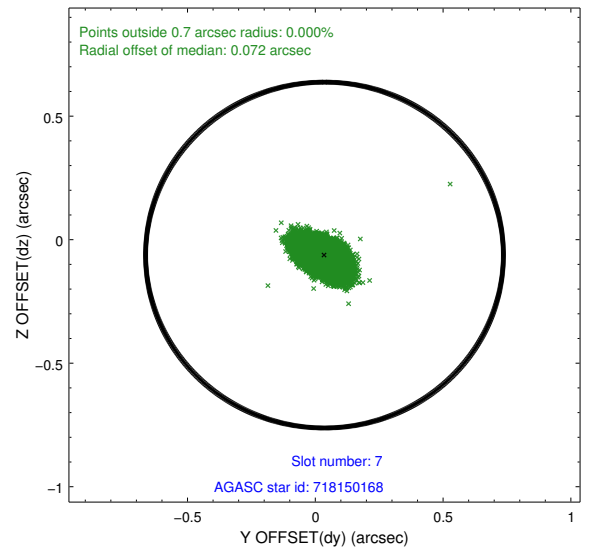
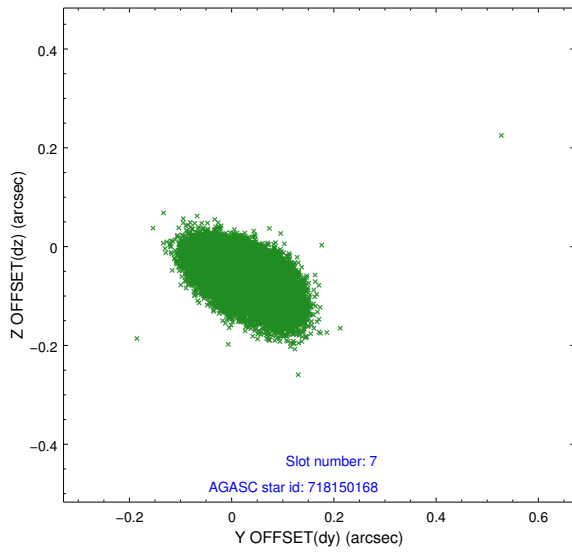
### 2.4.3 Slot 5



### 2.4.4 Slot 6

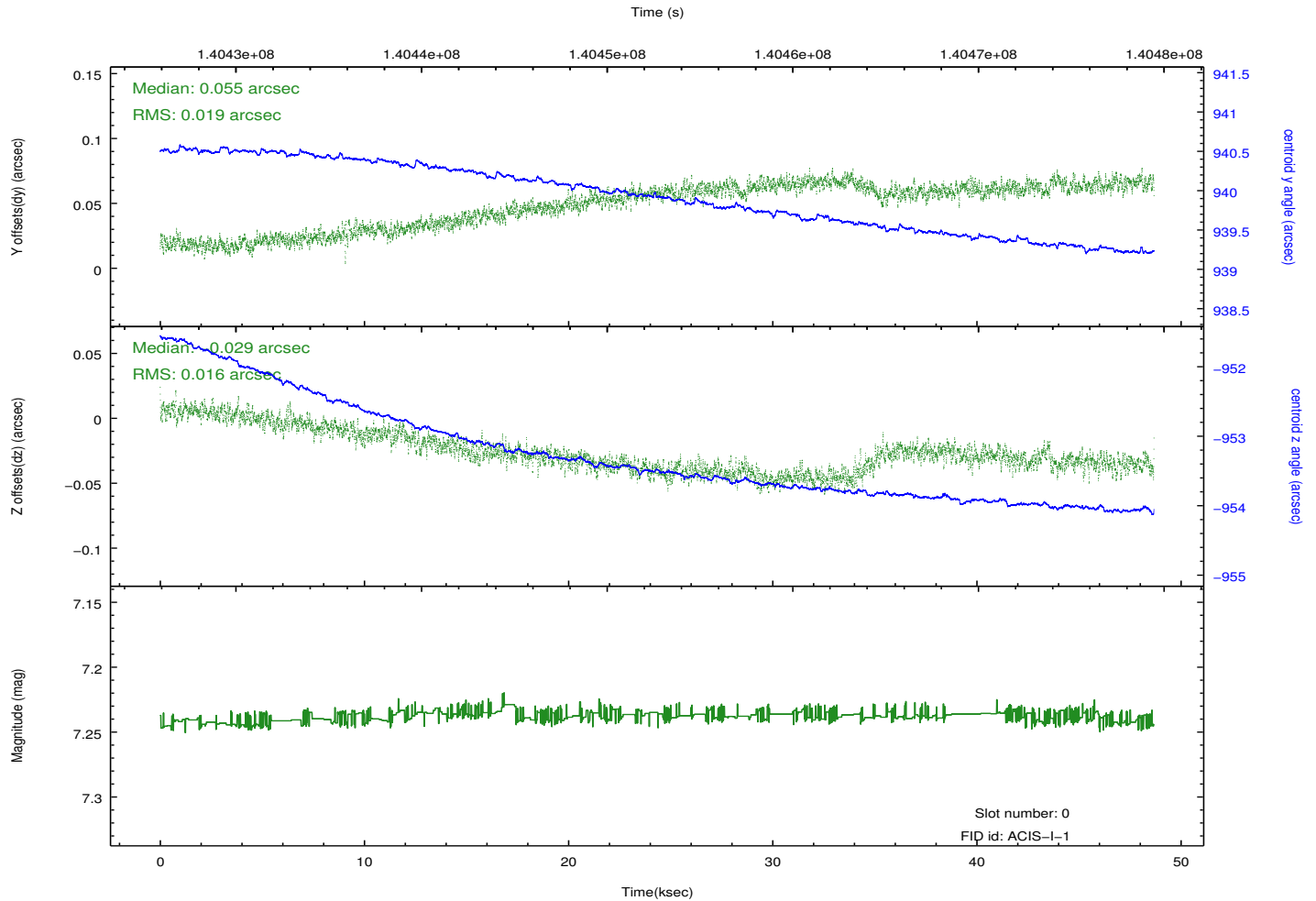
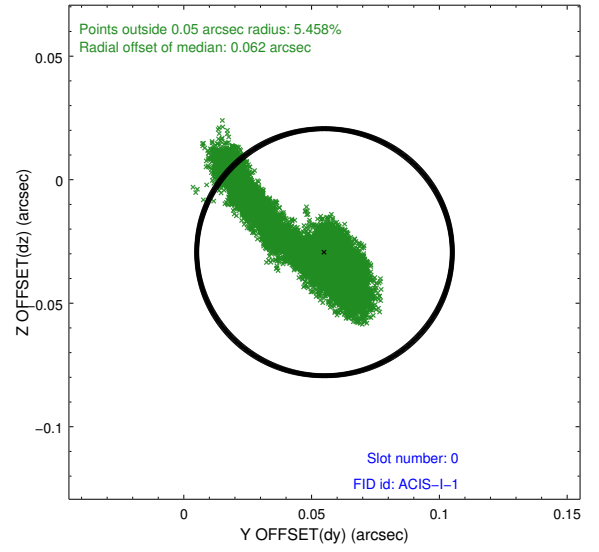
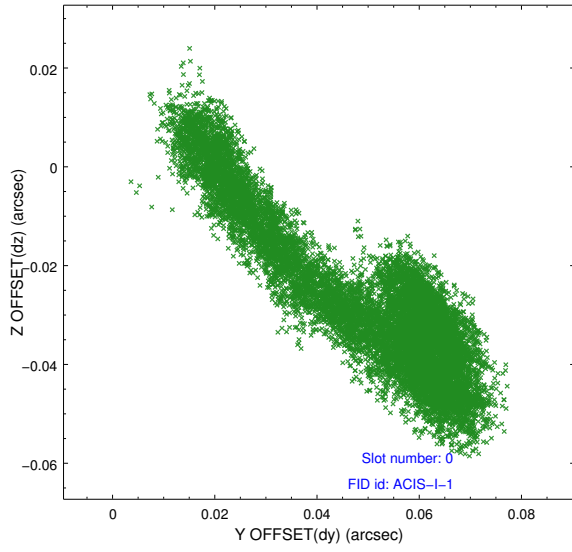


## 2.4.5 Slot 7

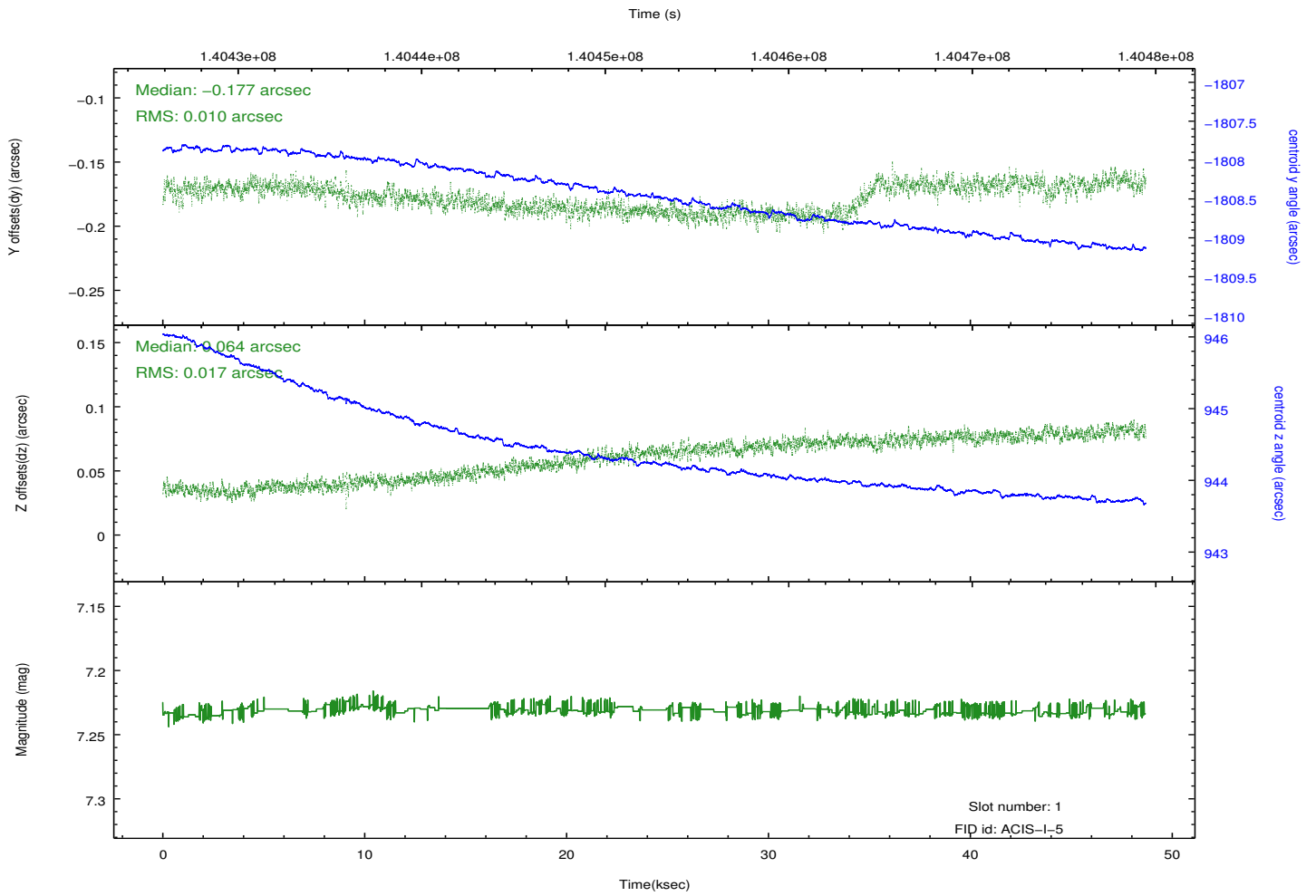
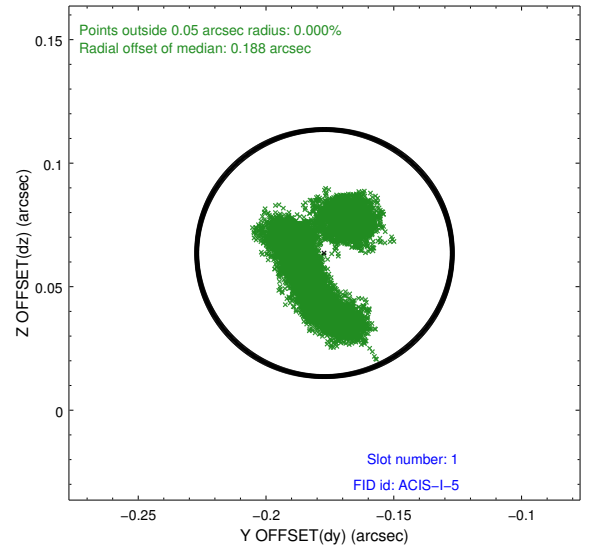
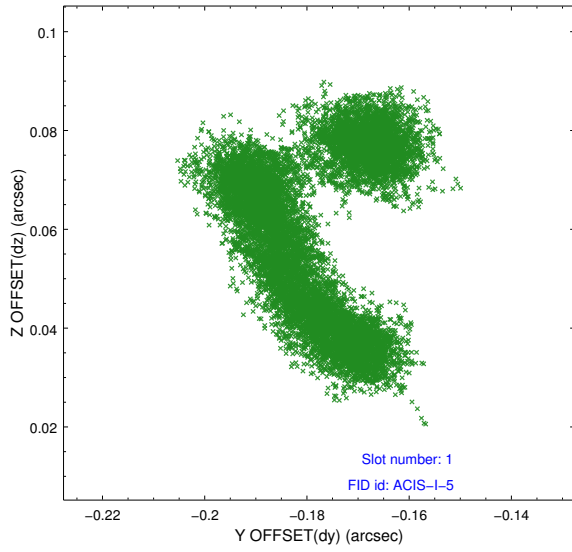


## 2.5 FID Slots

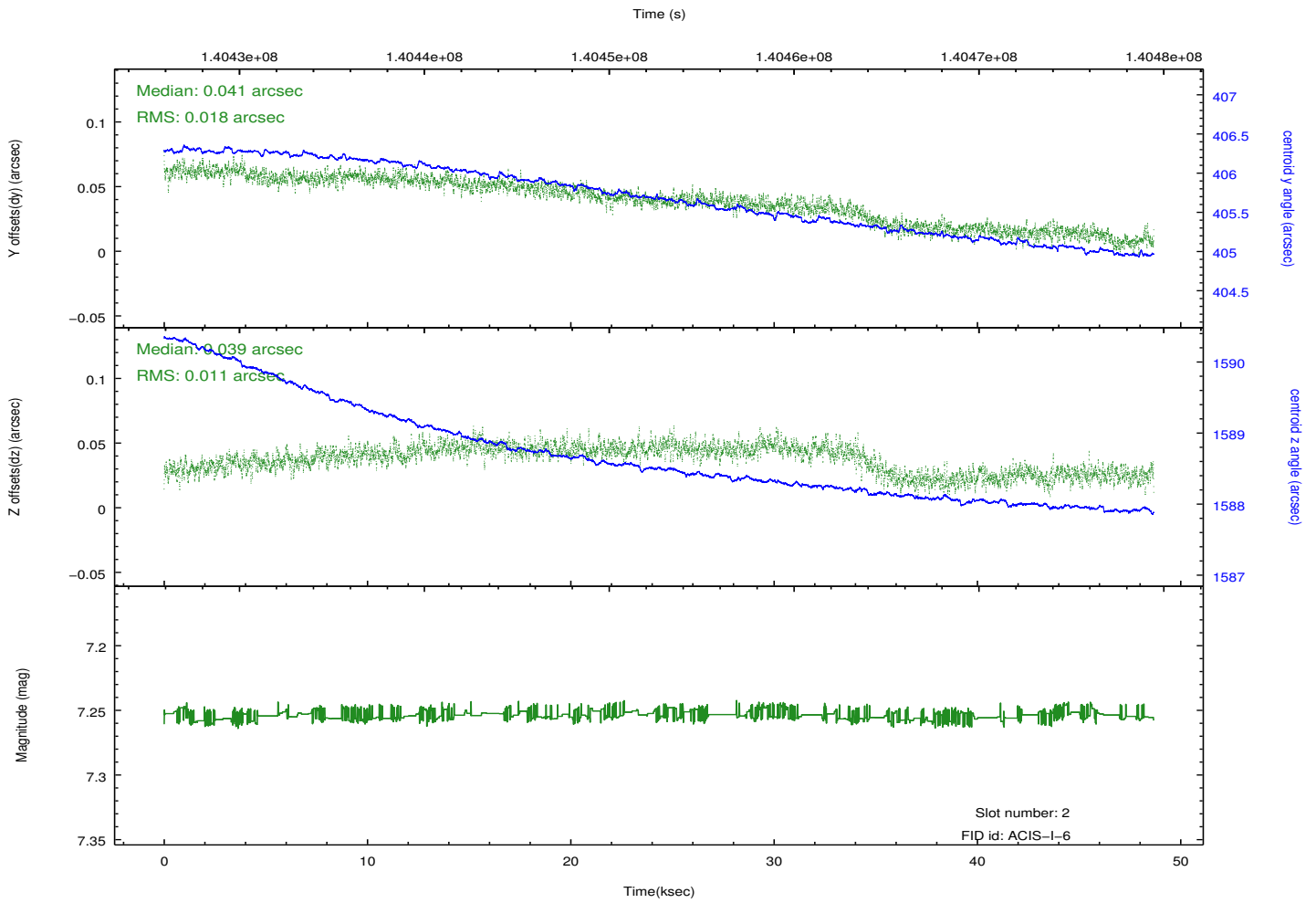
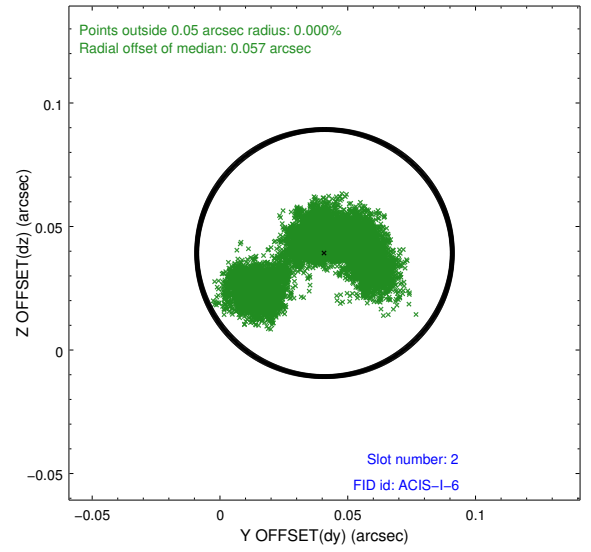
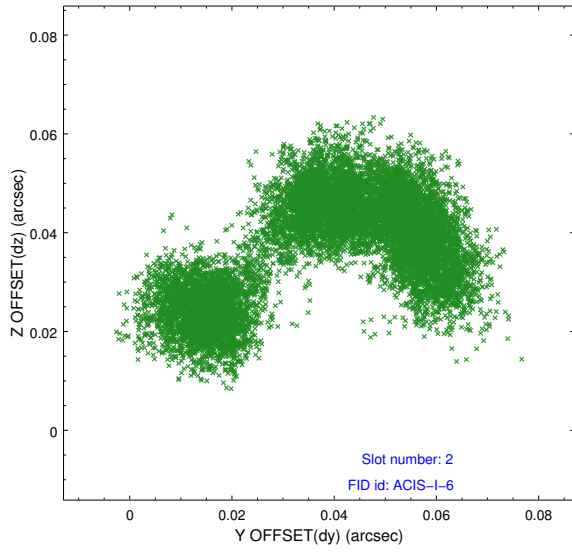
### 2.5.1 Slot 0



## 2.5.2 Slot 1



### 2.5.3 Slot 2



## A Summary

### A.1 Status

V&V Scientist	Jen Lauer
V&V Date (YYYY-MM-DD)	2012.10.18
V&V Edition	1
V&V Disposition and Status	OK
V&V Charge Time	48.669

### A.2 Comments