

V&V Reference Report

L2 ASCDS Version : 8.4.5

Observation 3675 - L2 Version 3
Chandra X-Ray Center

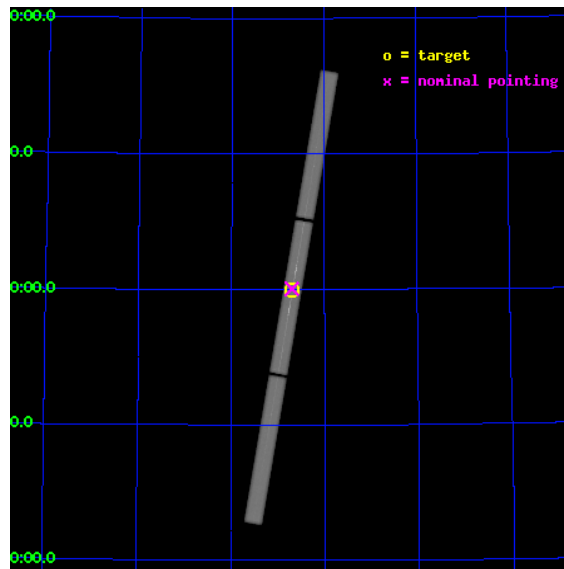
L2 Processing Date : Nov 4 2012

Contents

1	Front	2
2	OBI	3
2.1	OBI	3
2.1.1	Images	3
2.1.2	Parameters	4
2.1.3	Events	4
2.2	Compared Parameters	5
2.3	Aspect	6
2.4	Star Slots	9
2.4.1	Slot 3	9
2.4.2	Slot 4	10
2.4.3	Slot 5	11
2.4.4	Slot 6	12
2.4.5	Slot 7	13
2.5	FID Slots	14
2.5.1	Slot 1	14
2.5.2	Slot 2	15
3	Gratings	16
3.1	LETG Arm	16
A	Summary	18
A.1	Status	18
A.2	Comments	18

1 Front

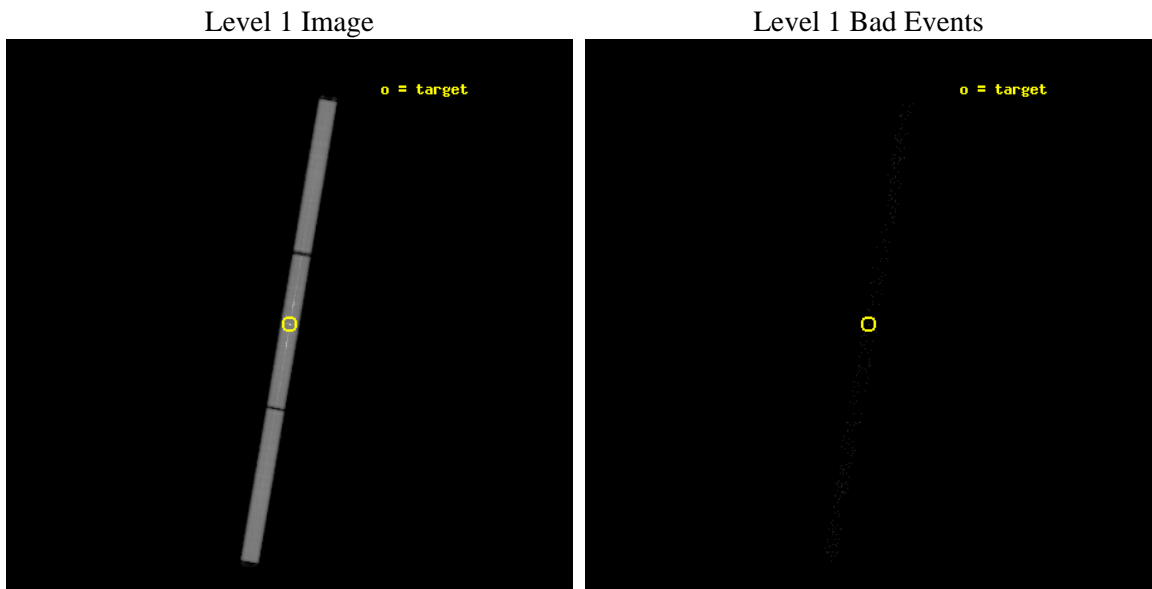
seq_num	290229	Sequence number
obs_id	3675	Observation id
title	AO4 CALIBRATION OBSERVATIONS OF CAPELLA	Proposal title
observer	Dr. CXC Calibration	Principal investigator
object	Capella	Source name
ra_targ	79.17625	Observer's specified target RA [deg]
dec_targ	45.997889	Observer's specified target Dec [deg]
ra_nom	79.175222324526	Nominal RA [deg]
dec_nom	46.002520837532	Nominal Dec [deg]
roll_nom	99.684300878073	Nominal Roll [deg]
revision	3	Processing version of data
ontime	27157.376165628	[s]
livetime	26963.782736926	Ontime multiplied by DTCOR
l2events	1688602	Number of level 2 events



2 OBI

2.1 OBI

2.1.1 Images



2.1.2 Parameters

obi_num	0	Obi number	sched_exp_time	27000.000000	[s] Scheduled observation exposure time
ascdsver	8.4.5	Processing system revision	ontime	27157.376165628	[s]
caldbver	4.5.2	 	l1events	2216374	Number of level 1 events
date	2012-11-04T12:10:09	Date and time of file creation			
revision	3	Processing version of data			

2.1.3 Events

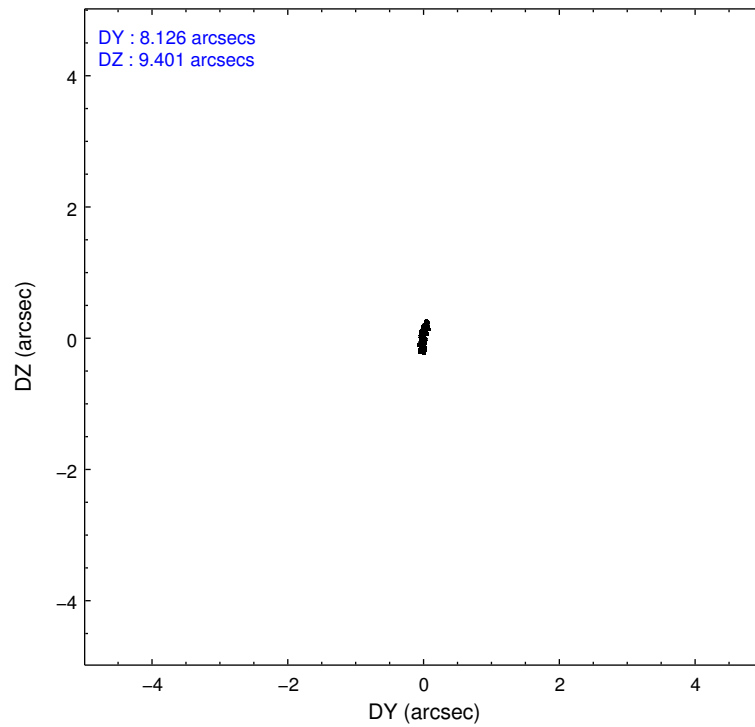
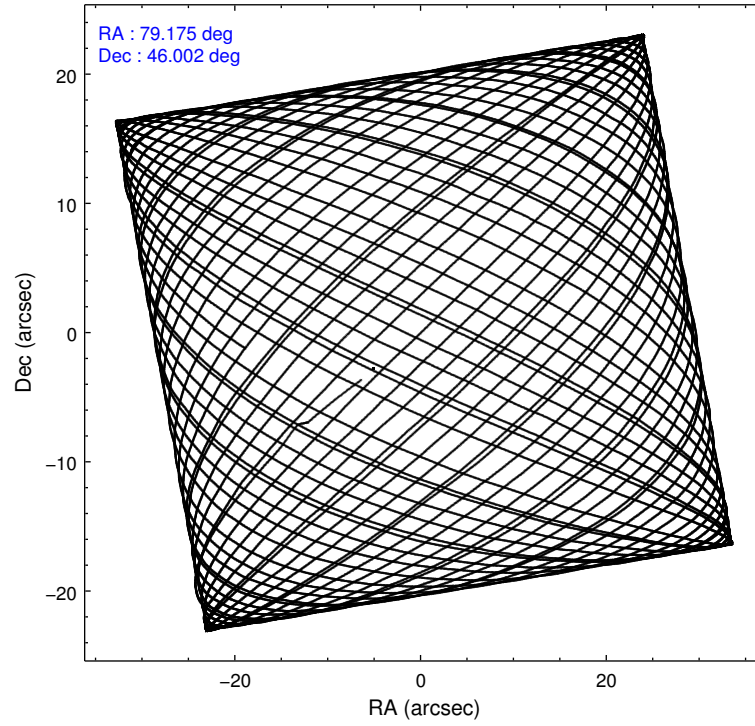
Level 1 Events

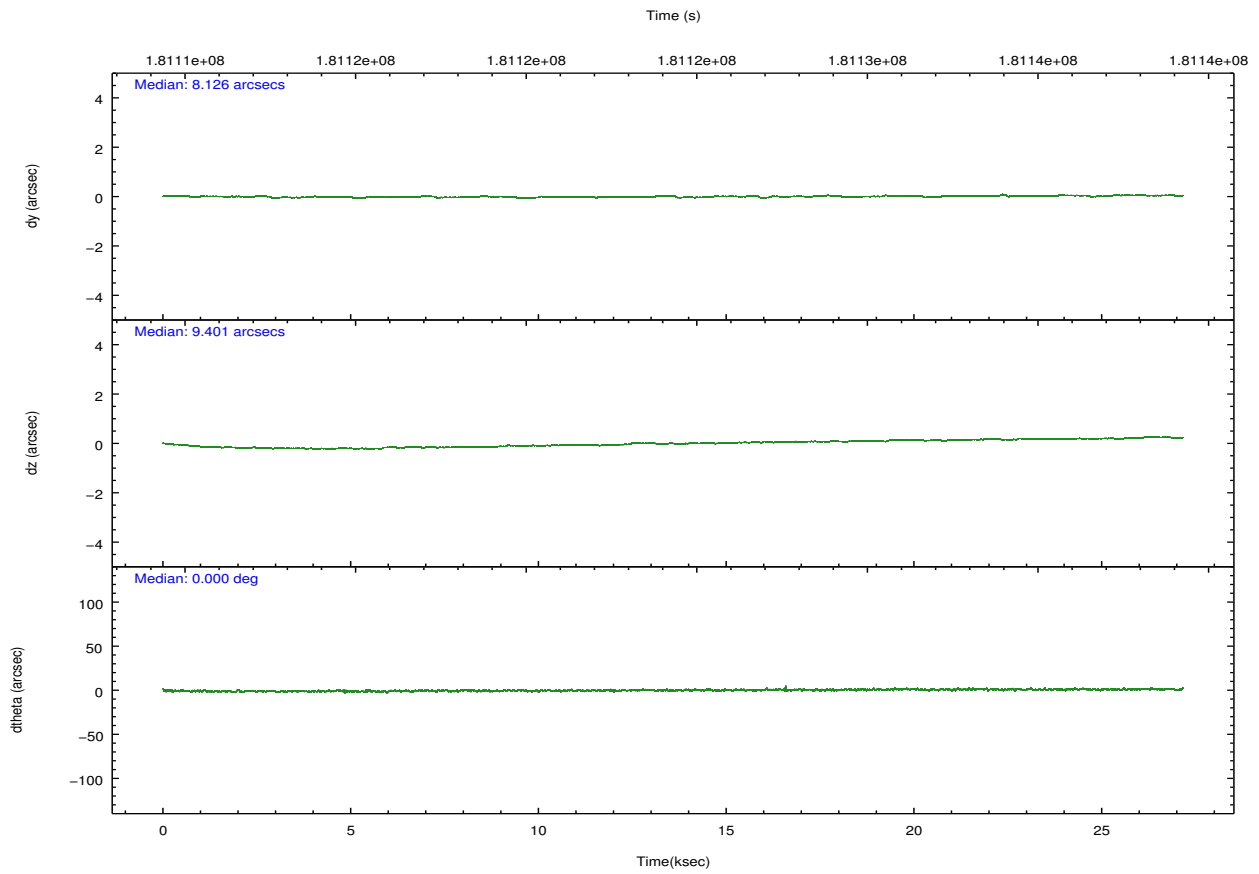
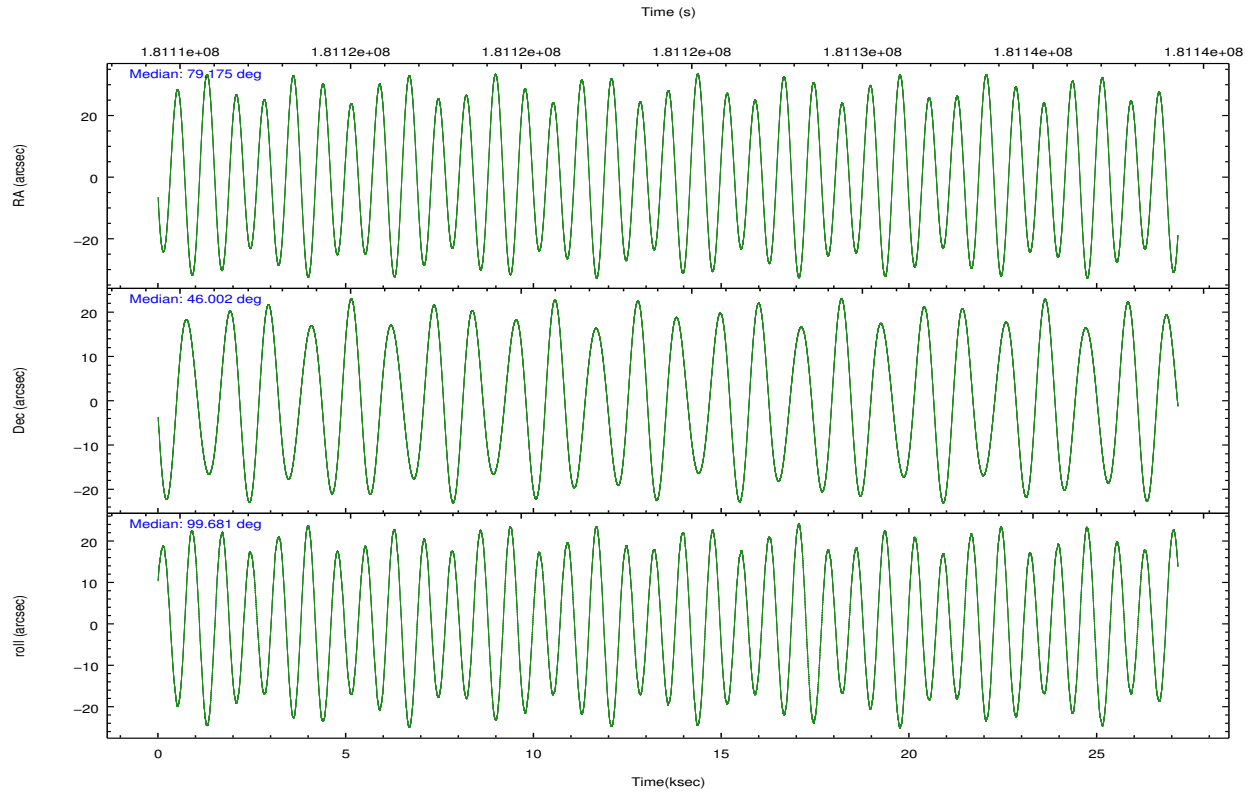
	segment 1	segment 2	segment 3
level 1 events	717101	802619	696654
rejected events	3048	16348	3003
rejected %	0%	2%	0%

2.2 Compared Parameters

Parameter	Planned	Actual	Parameter	Planned	Actual
Instrument	HRC	HRC	Obspar format version number	7	7
Detector	HRC-S	HRC-S	Obspar file type	PREDICTED	ACTUAL
Grating	LETG	LETG	Obspar update status	NONE	UPDATED
Data mode	OBSERVING	OBSERVING			
Observation mode	POINTING	POINTING			
[deg] Pointing RA	79.203122	79.17522232452613			
[deg] Pointing Dec	45.981443	46.00252083753195			
[deg] Pointing Roll	99.596894	99.68430087807316			
[s] Window start time (MET)	178761664.184000	178761664.184000			
[s] Window stop time (MET)	183945664.184000	183945664.184000			
[mm] SIM focus pos	-1.429586	-1.428180813131781			
[mm] SIM defocus	0.1037507710433287	0.1051558262725154			
[mm] SIM translation stage pos	250.455976	250.466033080201			
[mm] SIM translation stage offset	0	-0.01005468664627074			
[s] Observation start time (MET)	181110885.184000	181110190.85618			
Observation start date	2003-09-28T04:33:41	2003-09-28T04:23:10			
[s] Observation end time (MET)	181137885.184000	181138885.73241			
Observation end date	2003-09-28T12:03:41	2003-09-28T12:21:25			

2.3 Aspect



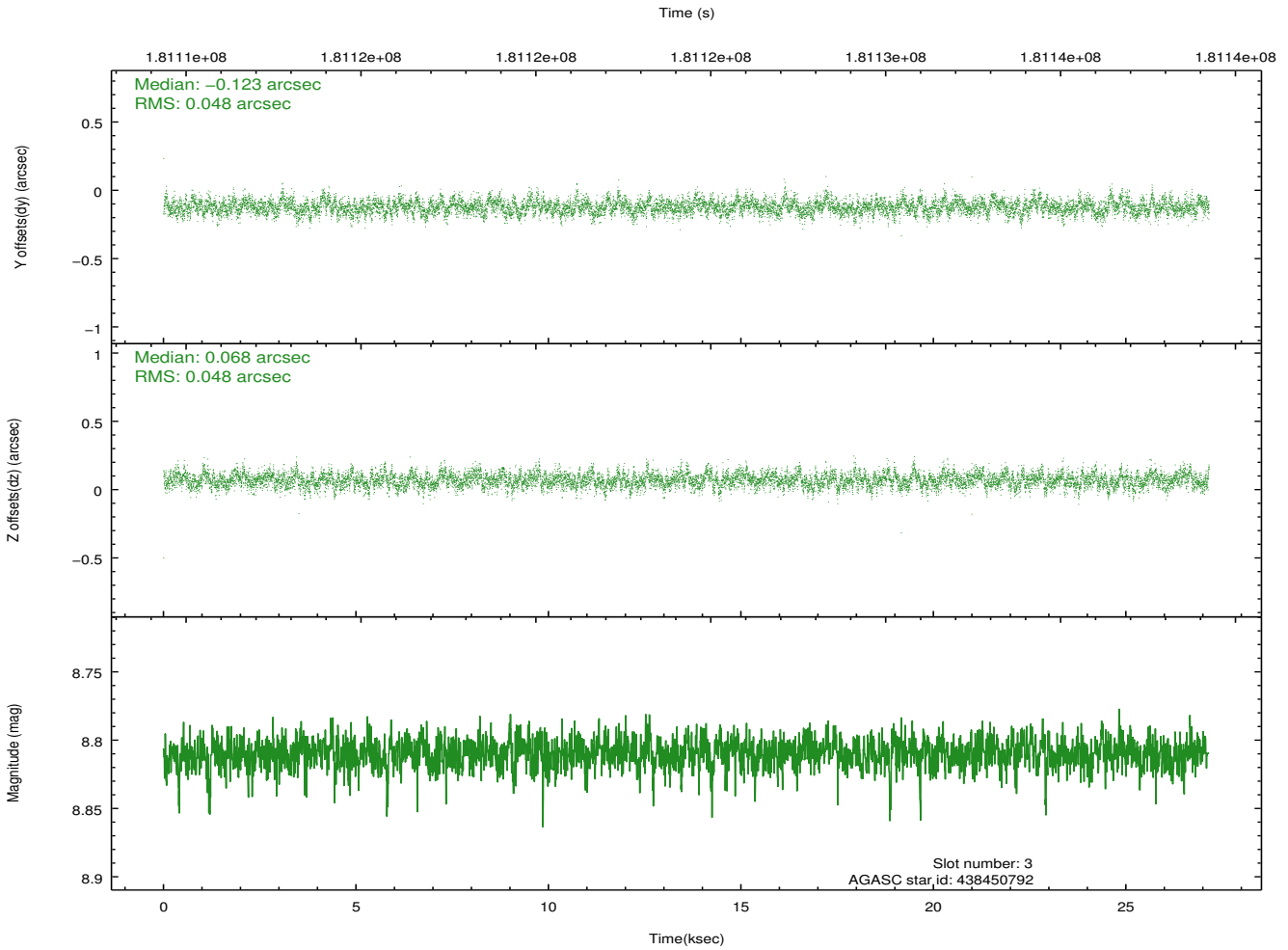
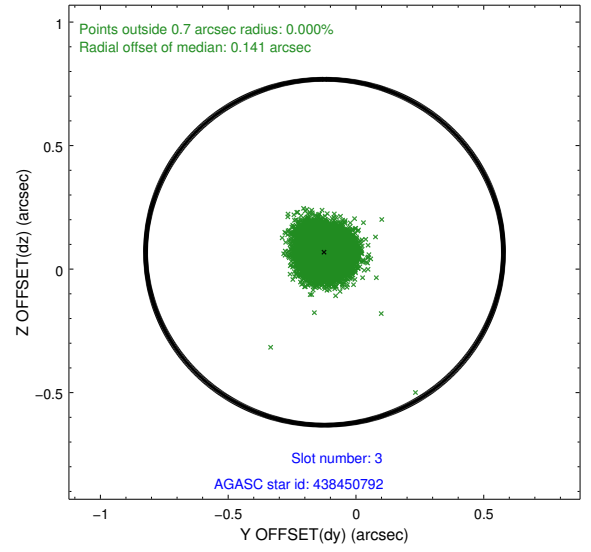
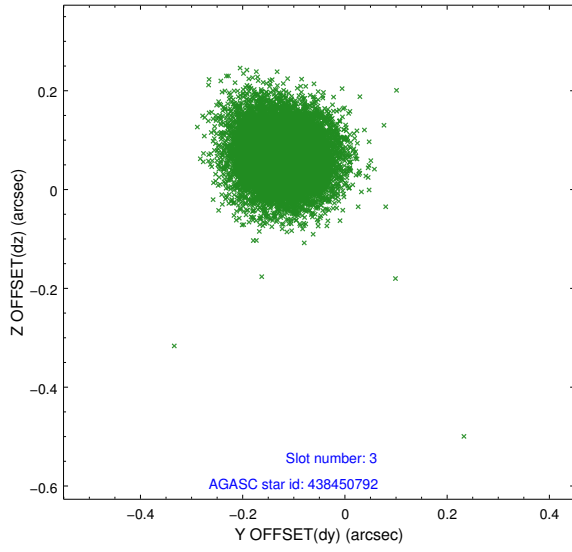


Slot Statistics

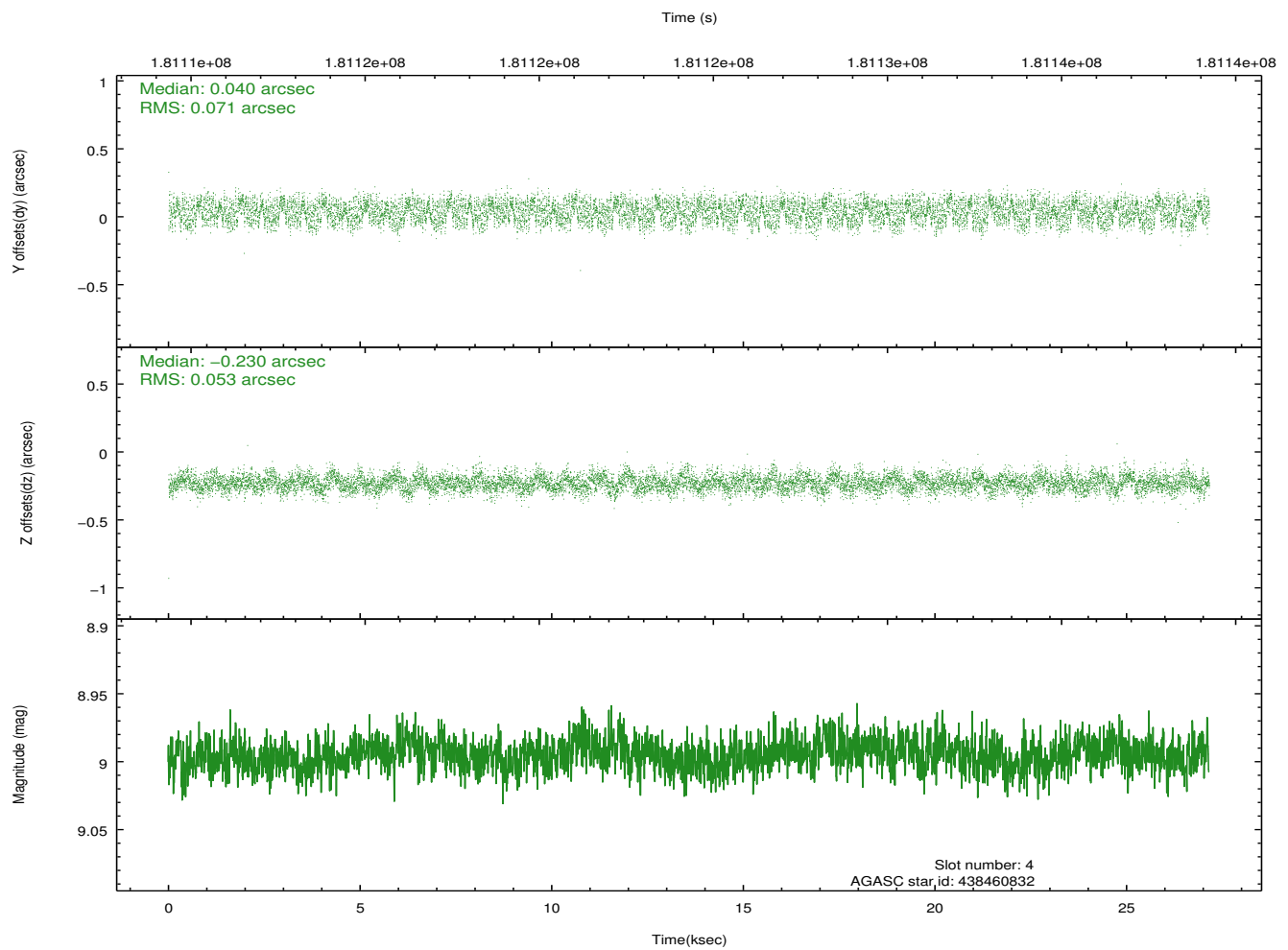
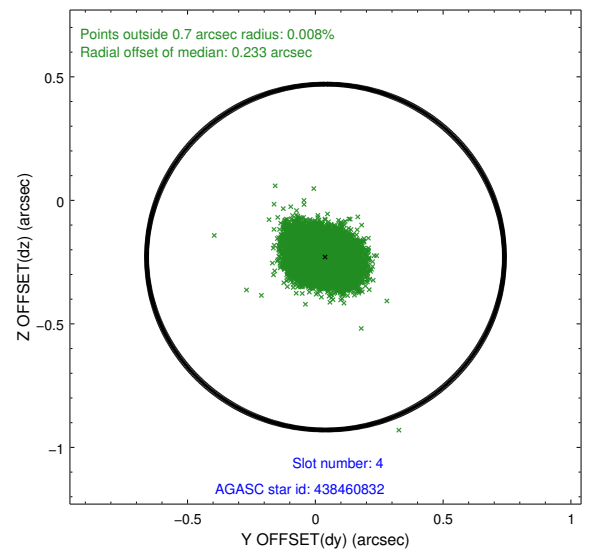
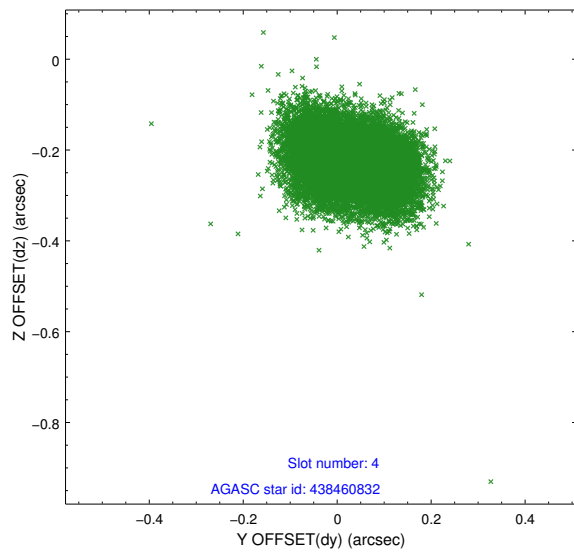
slot	status	id	mag	n_pts	med_dy	med_dz	dr1	dr2	ra	dec	mean_y	mean_z
0	UNUSED		0.00	0	0.000	0.000	0.000	0.000	0.000000	0.000000	0.00	0.00
1	FID	HRC-S-2	7.02	6623	0.166	-0.113	0.004	0.009	0.000000	0.000000	1237.38	-450.73
2	FID	HRC-S-3	7.04	6623	0.100	-0.085	0.004	0.009	0.000000	0.000000	-1164.84	571.54
3	GUIDE	438450792	8.81	13246	-0.123	0.068	0.072	0.117	78.654240	46.382628	1655.41	1102.58
4	GUIDE	438460832	9.00	13243	0.040	-0.230	0.095	0.149	78.414614	45.554782	-1173.40	2214.02
5	GUIDE	440145944	9.09	13243	0.103	0.295	0.089	0.141	80.083717	45.428844	-2320.09	-1863.85
6	GUIDE	440149808	8.43	13246	-0.069	0.098	0.067	0.110	78.873930	46.405955	1644.66	550.70
7	GUIDE	440164960	8.31	13246	0.052	-0.232	0.077	0.127	79.132526	46.140947	595.74	77.68

2.4 Star Slots

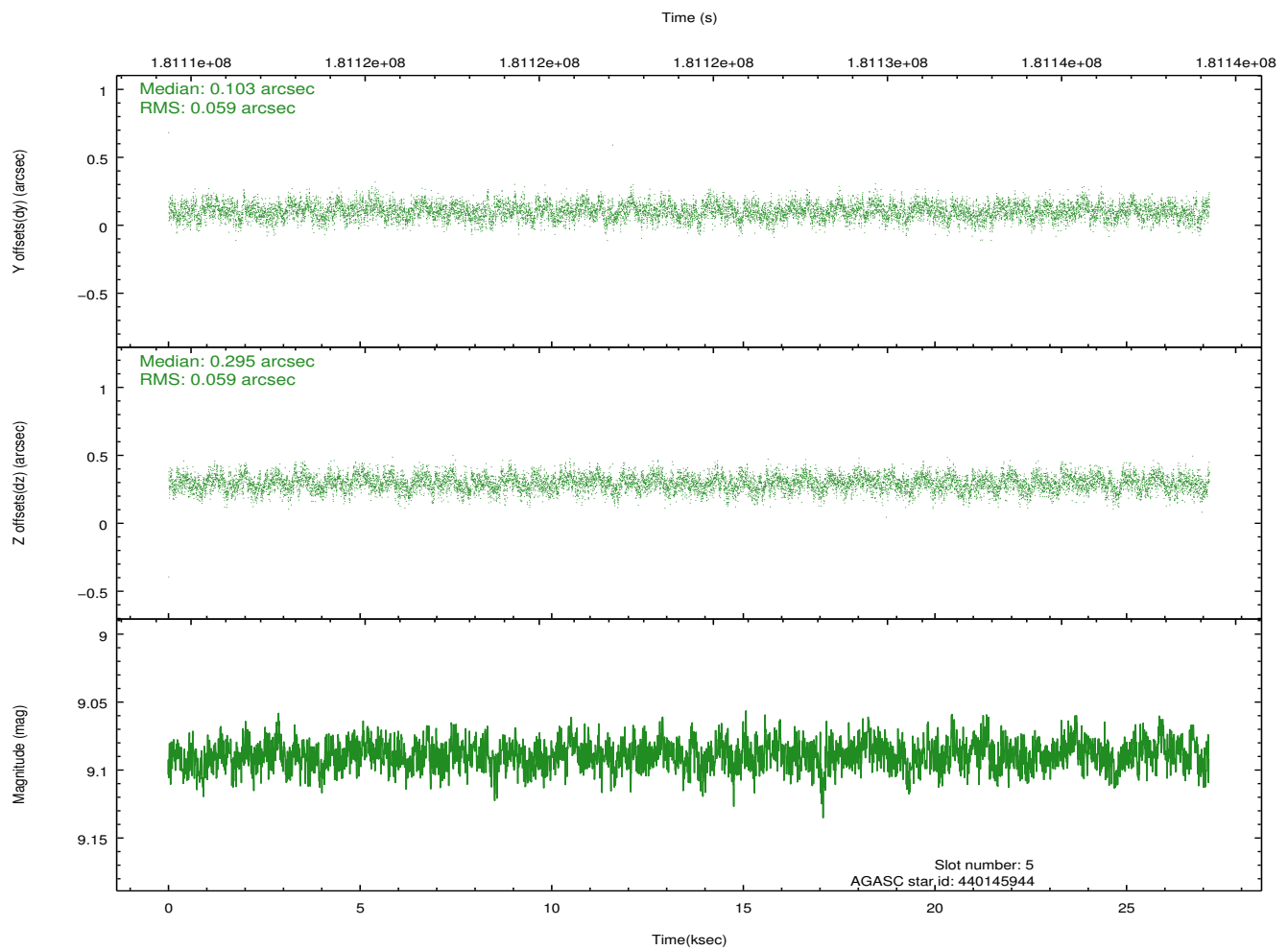
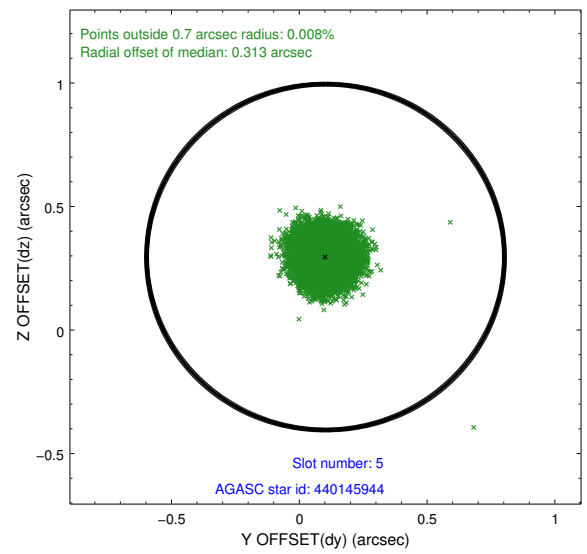
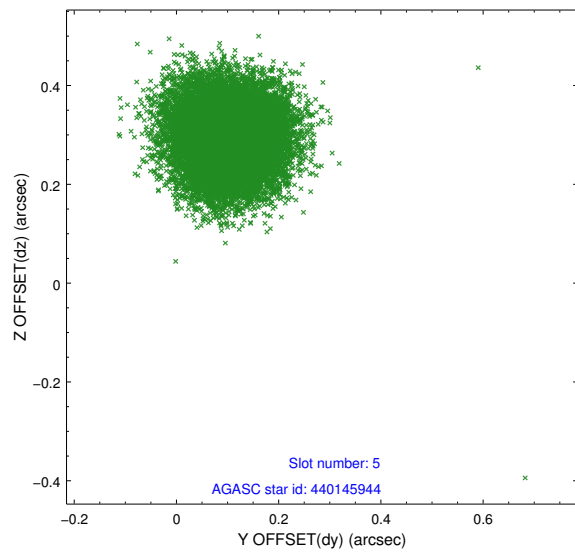
2.4.1 Slot 3



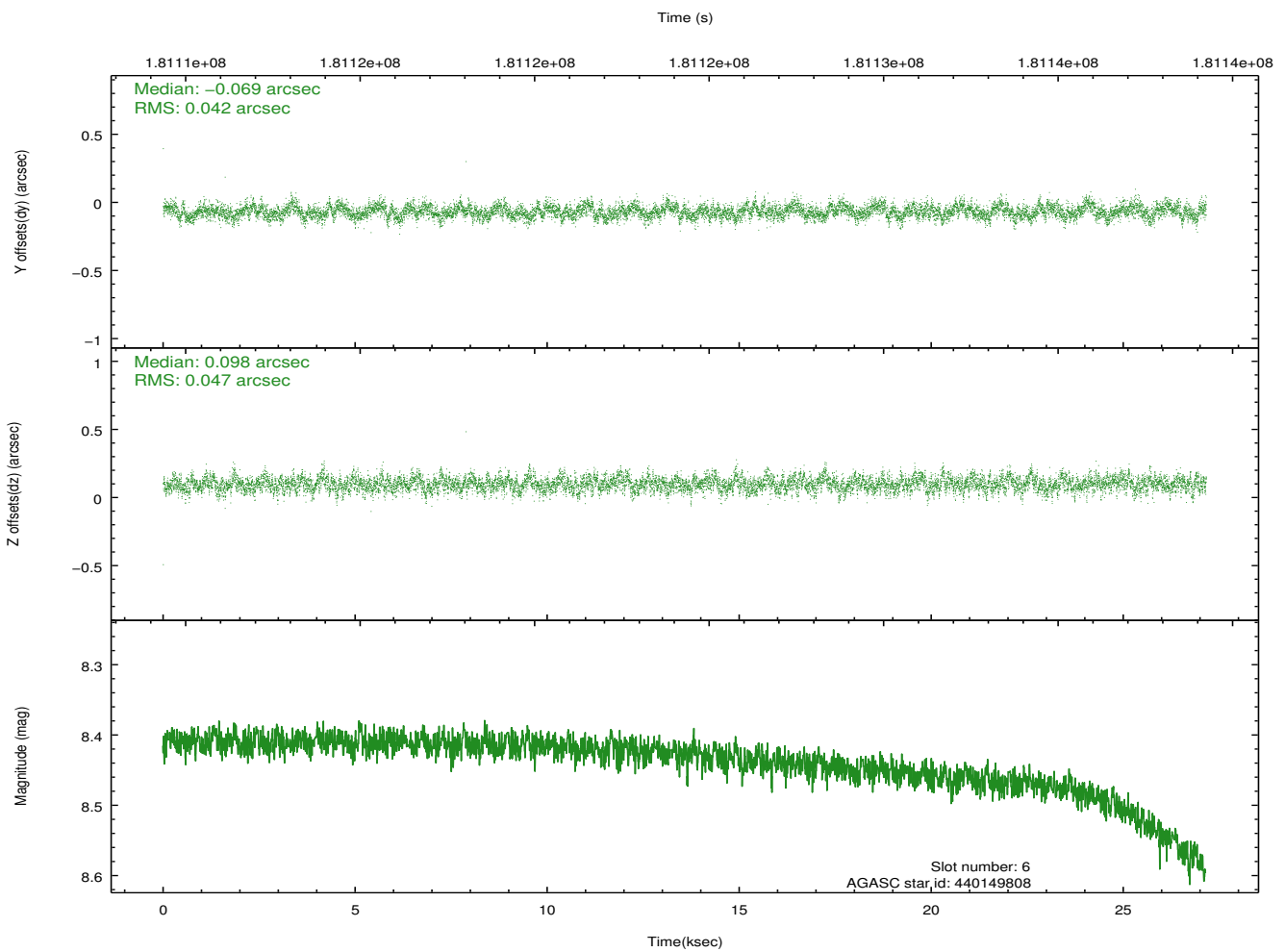
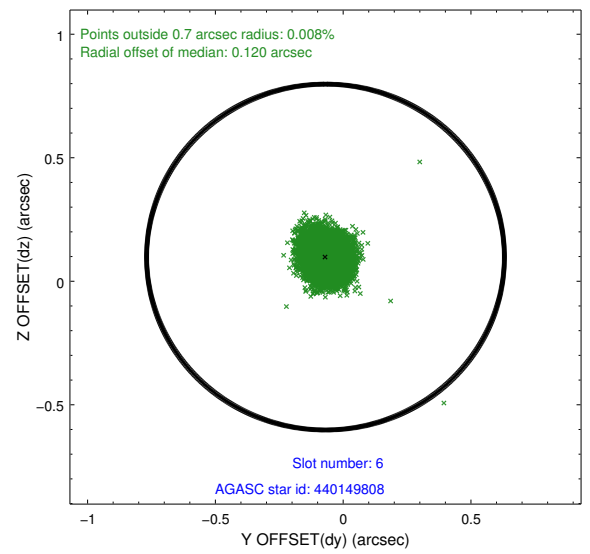
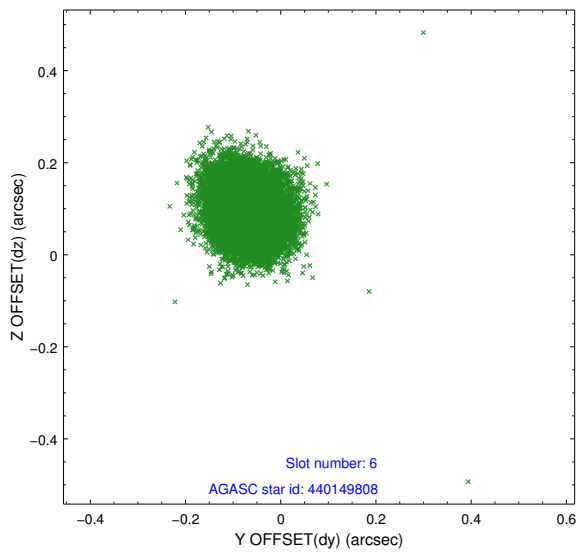
2.4.2 Slot 4



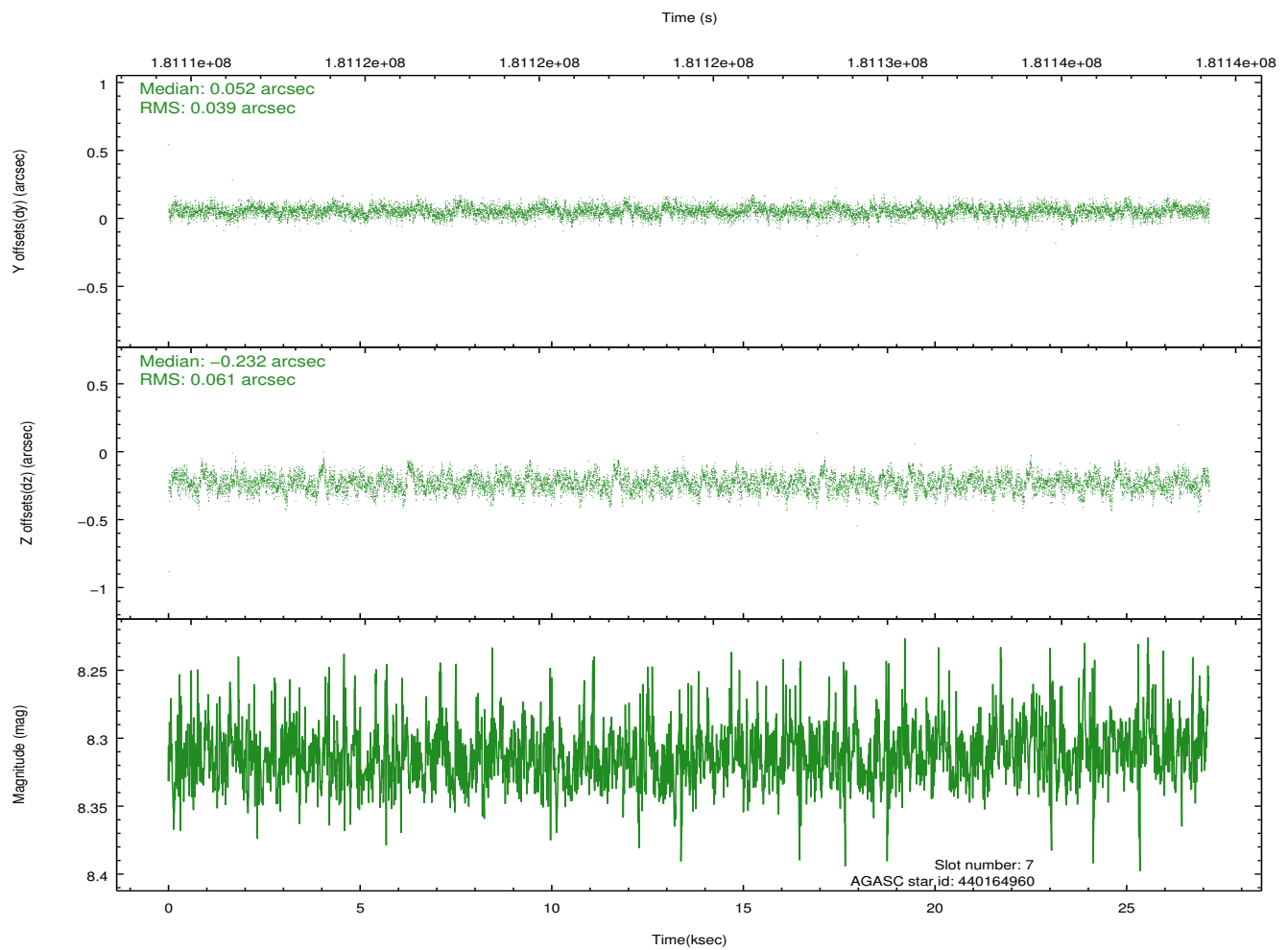
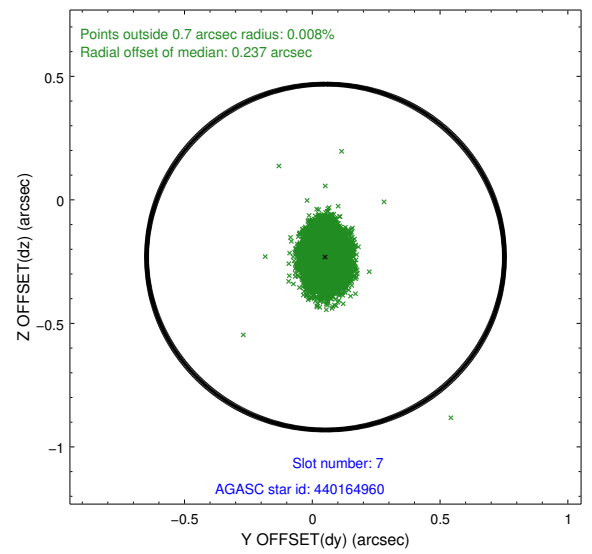
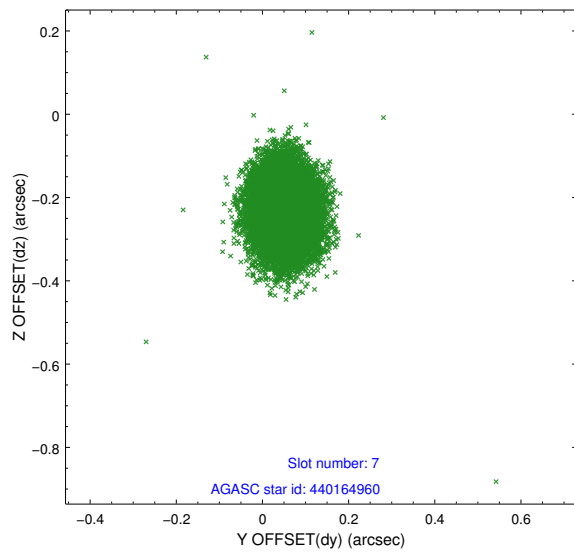
2.4.3 Slot 5



2.4.4 Slot 6

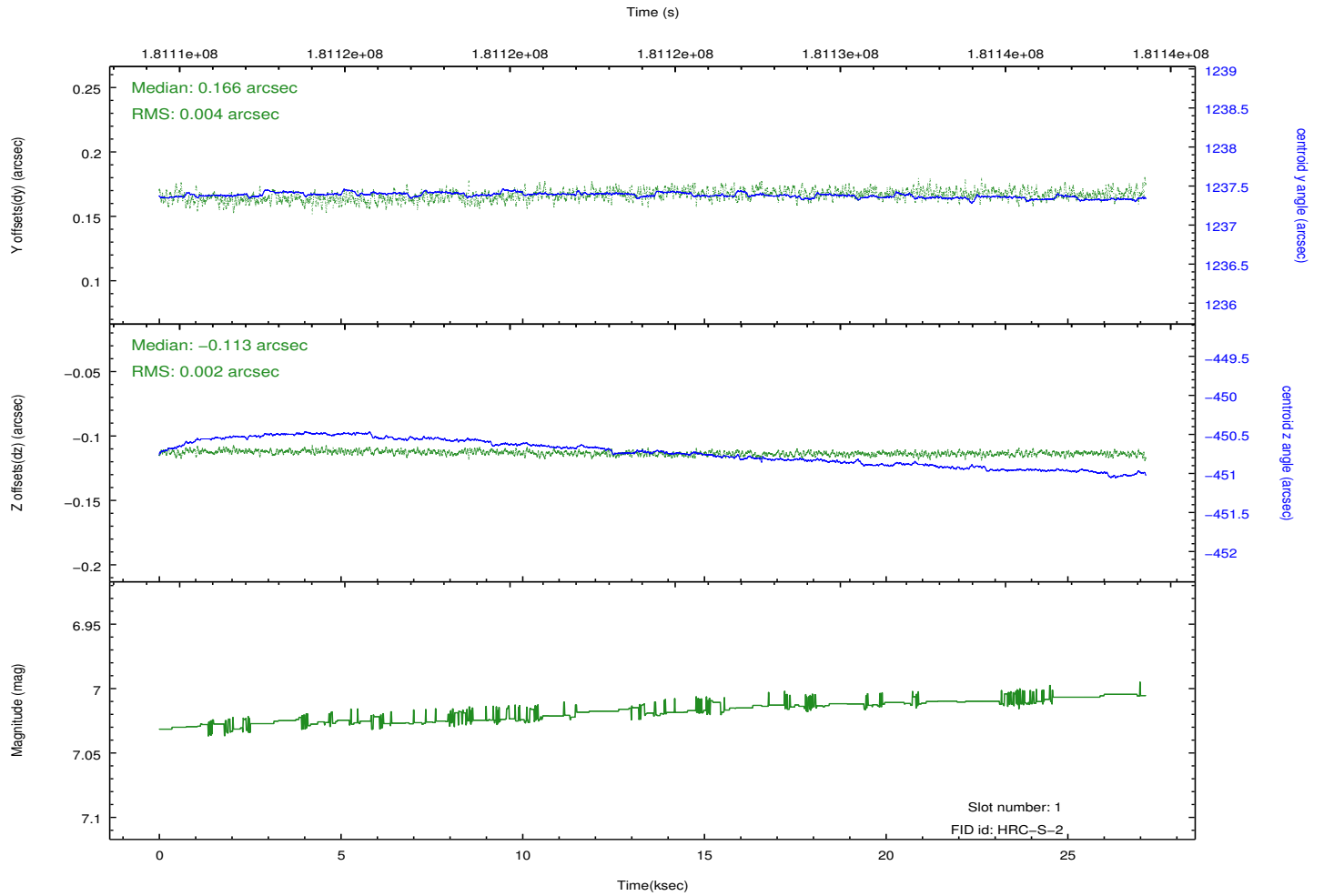
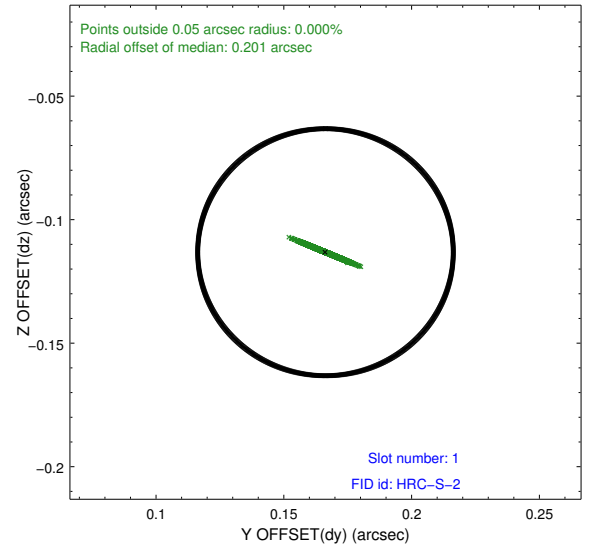
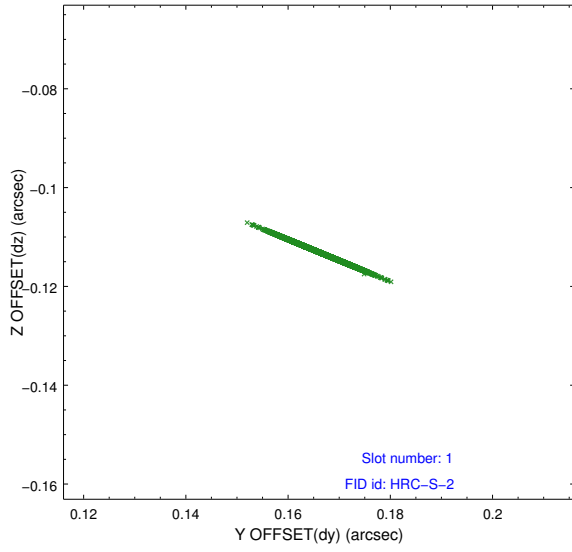


2.4.5 Slot 7

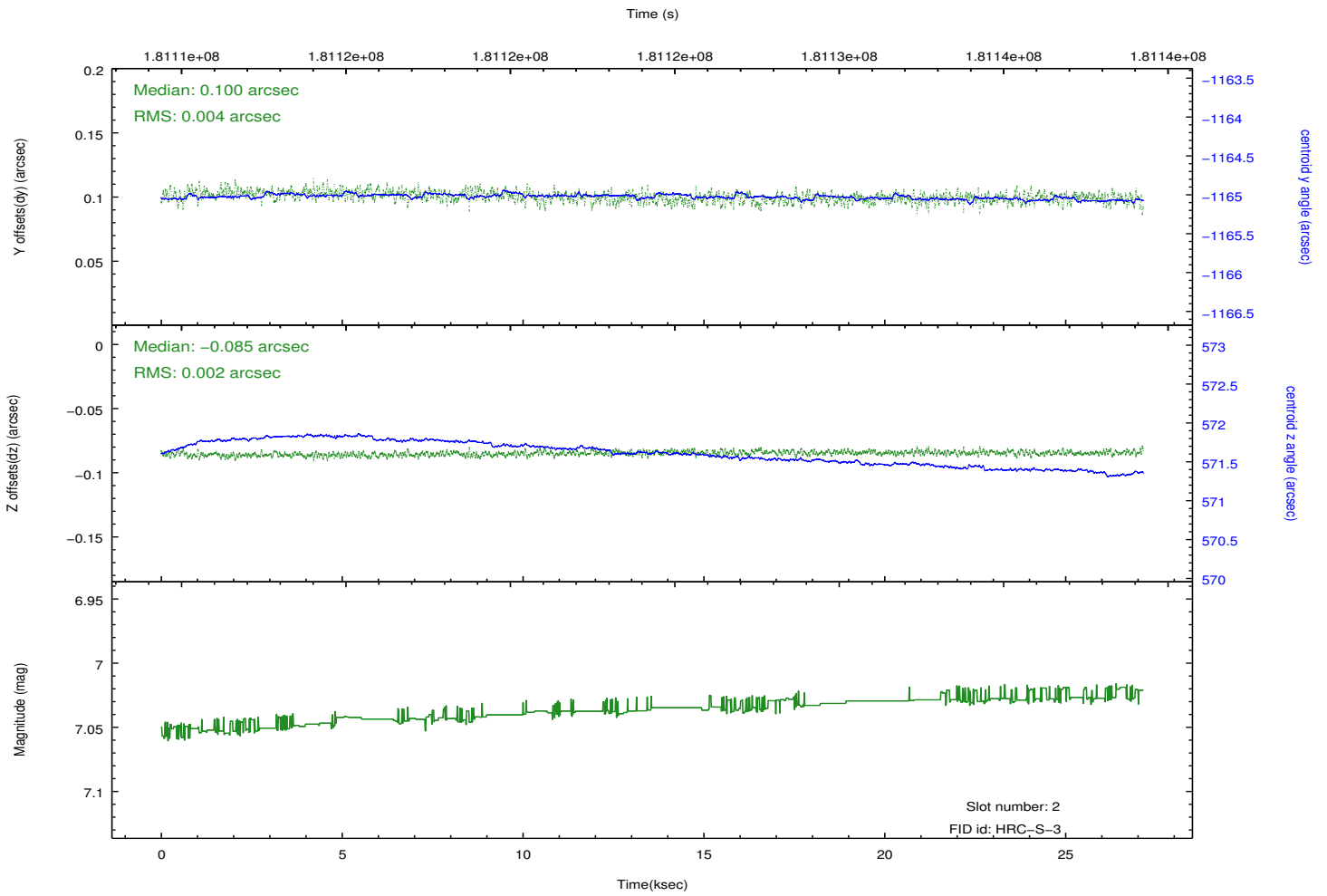
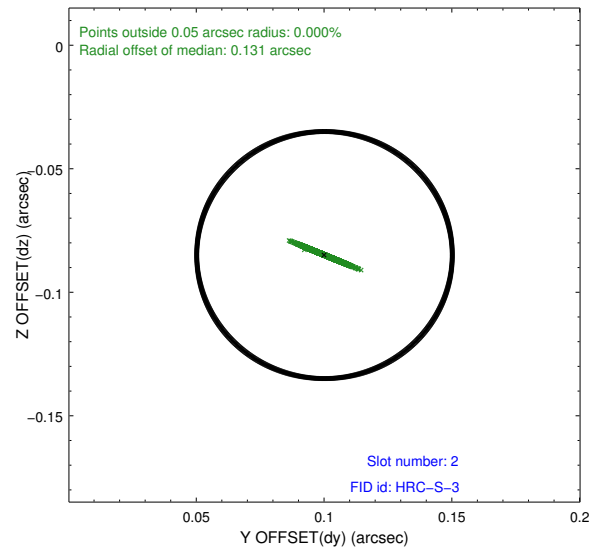
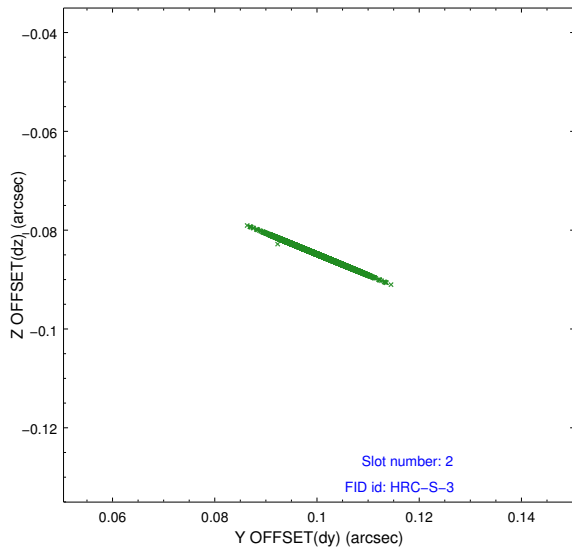


2.5 FID Slots

2.5.1 Slot 1

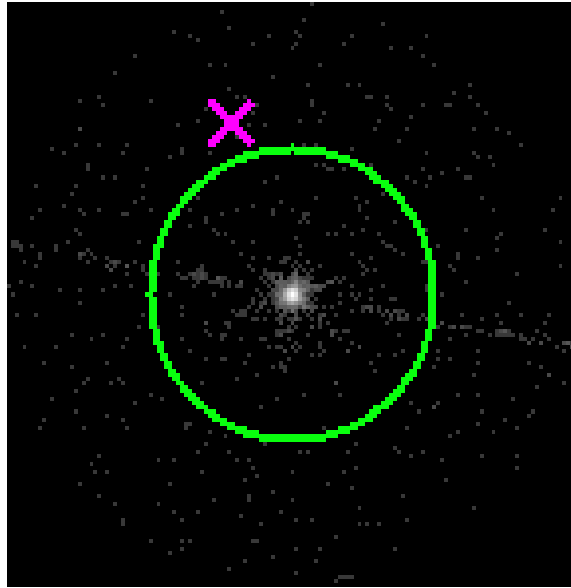


2.5.2 Slot 2

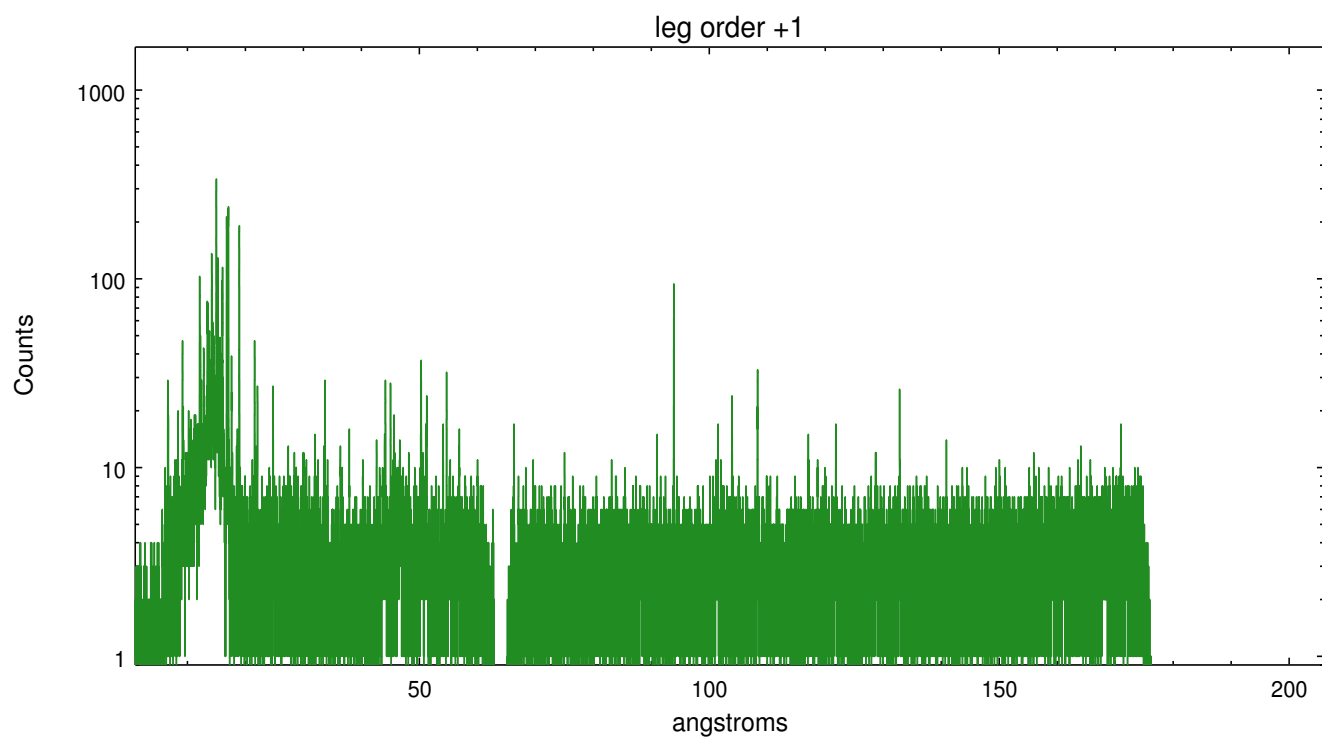
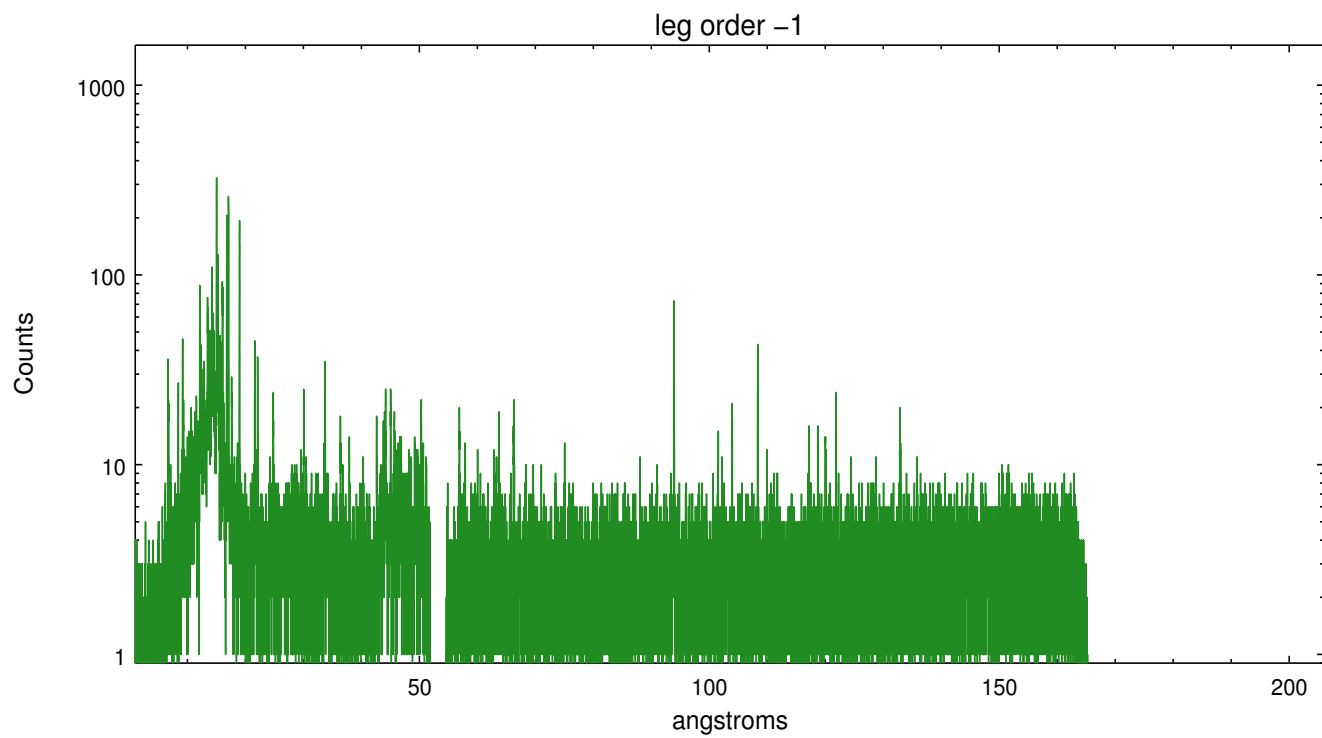


3 Gratings

3.1 LETG Arm



LETG Zero Order



A Summary

A.1 Status

V&V Scientist	Joy Nichols
V&V Date (YYYY-MM-DD)	2012.12.13
V&V Edition	1
V&V Disposition and Status	OK
V&V Charge Time	27.157

A.2 Comments

The fid light in slot 0 has no data because the previous instrumental setup had the HRC shutters closed. The fid light setup for this observation occurred before the shutters were reopened fully.