

V&V Reference Report

L2 ASCDS Version : 8.4.5

Observation 3855 - L2 Version 3
Chandra X-Ray Center

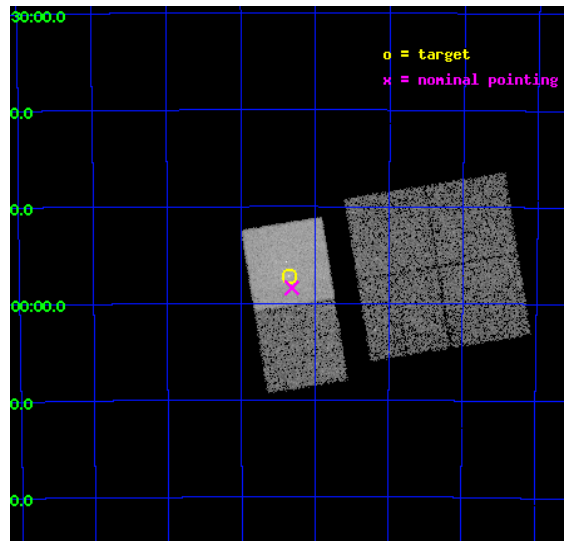
L2 Processing Date : Oct 28 2012

Contents

1	Front	2
2	OBI	3
2.1	OBI	3
2.1.1	Images	3
2.1.2	Bias	3
2.1.3	Parameters	4
2.1.4	Events	4
2.2	Compared Parameters	5
2.3	Aspect	6
2.4	Star Slots	9
2.4.1	Slot 3	9
2.4.2	Slot 4	10
2.4.3	Slot 5	11
2.4.4	Slot 6	12
2.4.5	Slot 7	13
2.5	FID Slots	14
2.5.1	Slot 0	14
2.5.2	Slot 1	15
2.5.3	Slot 2	16
A	Summary	17
A.1	Status	17
A.2	Comments	17

1 Front

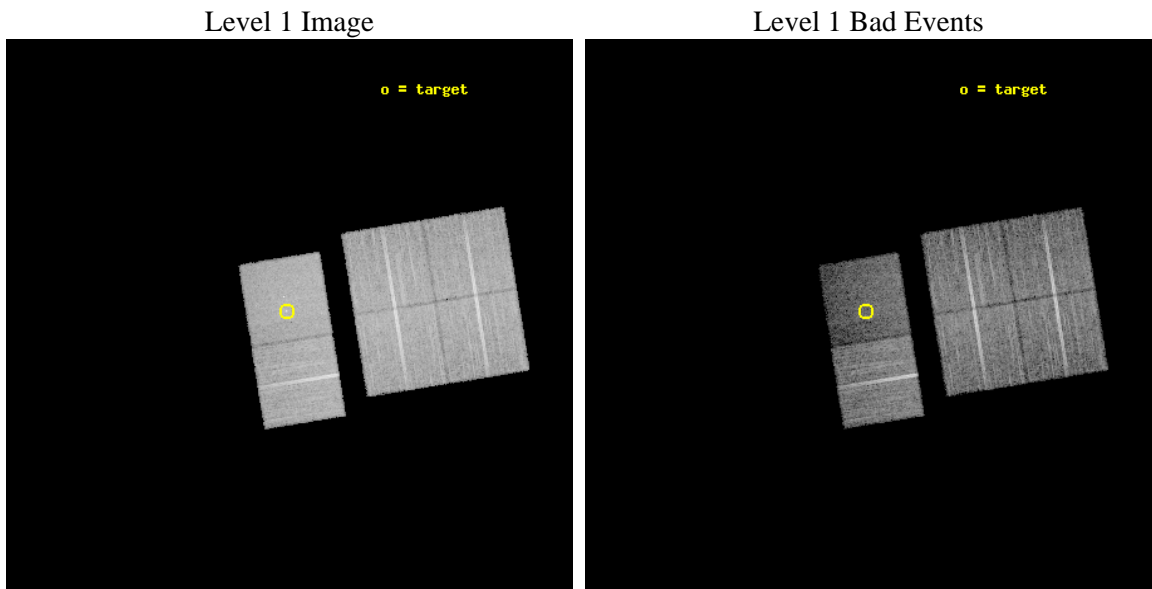
seq_num	500334	Sequence number
obs_id	3855	Observation id
title	FREE AT LAST: AN ENERGETIC PULSAR ESCAPES ITS SUPERNOVA REMNANT	Pr
observer	Dr Fernando Camilo	Principal investigator
object	PSR J1016-5857	Source name
dtcycle	0	
cycle	P	events from which exps? Prim/Second/Both
ra_targ	154.088333	Observer's specified target RA [deg]
dec_targ	-58.953333	Observer's specified target Dec [deg]
ra_nom	154.07867239696	Nominal RA [deg]
dec_nom	-58.973436613978	Nominal Dec [deg]
roll_nom	260.821753212	Nominal Roll [deg]
revision	3	Processing version of data
ontime	18959.999929368	Sum of GTIs [s]
livetime	18719.916993921	Livetime [s]
ontime0	18959.999929368	Sum of GTIs [s]
ontime1	18959.999929368	Sum of GTIs [s]
ontime2	18959.999929368	Sum of GTIs [s]
ontime3	18959.999929368	Sum of GTIs [s]
ontime6	18959.999929368	Sum of GTIs [s]
ontime7	18959.999929368	Sum of GTIs [s]
l2events	87548	Number of level 2 events



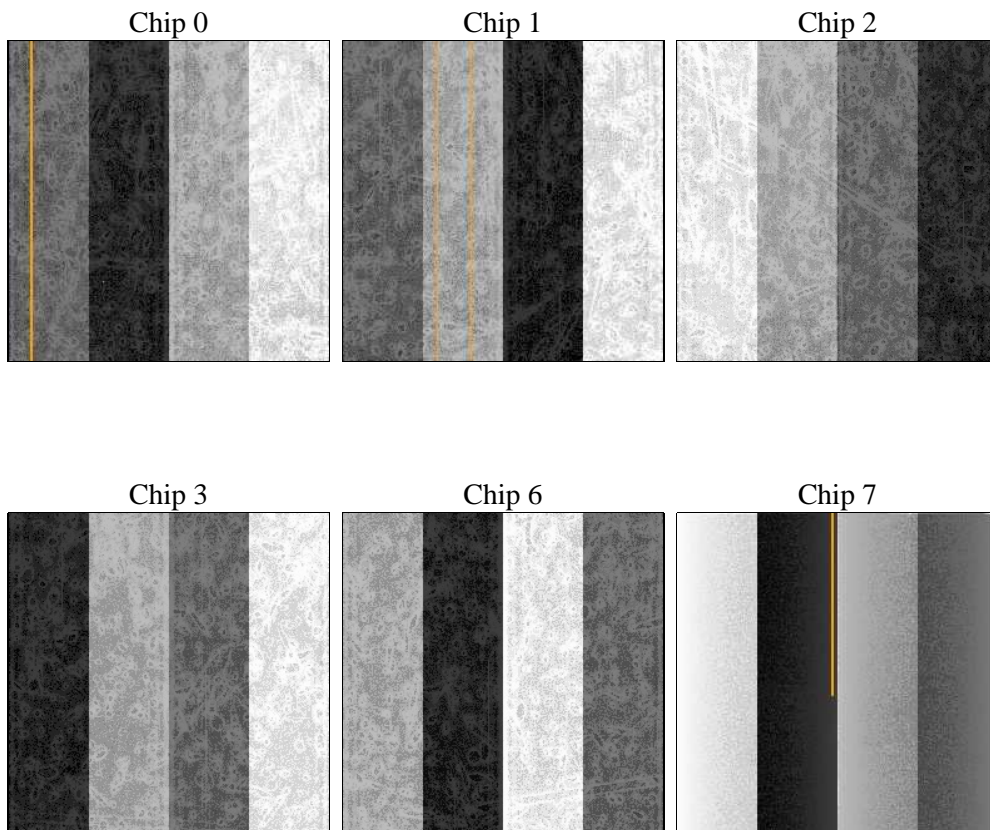
2 OBI

2.1 OBI

2.1.1 Images



2.1.2 Bias



2.1.3 Parameters

obi_num	2	Obi number	sched_exp_time	19000.000000	[s] Scheduled observation exposure time
ascdsver	8.4.5	Processing system revision	ontime	18959.999929368	Sum of GTIs [s]
caldbver	4.5.2	 	ontime0	18959.999929368	Sum of GTIs [s]
date	2012-10-28T13:47:39	Date and time of file creation	ontime1	18959.999929368	Sum of GTIs [s]
revision	3	Processing version of data	ontime2	18959.999929368	Sum of GTIs [s]
			ontime3	18959.999929368	Sum of GTIs [s]
			ontime6	18959.999929368	Sum of GTIs [s]
			ontime7	18959.999929368	Sum of GTIs [s]
			l1events	558893	Number of level 1 events

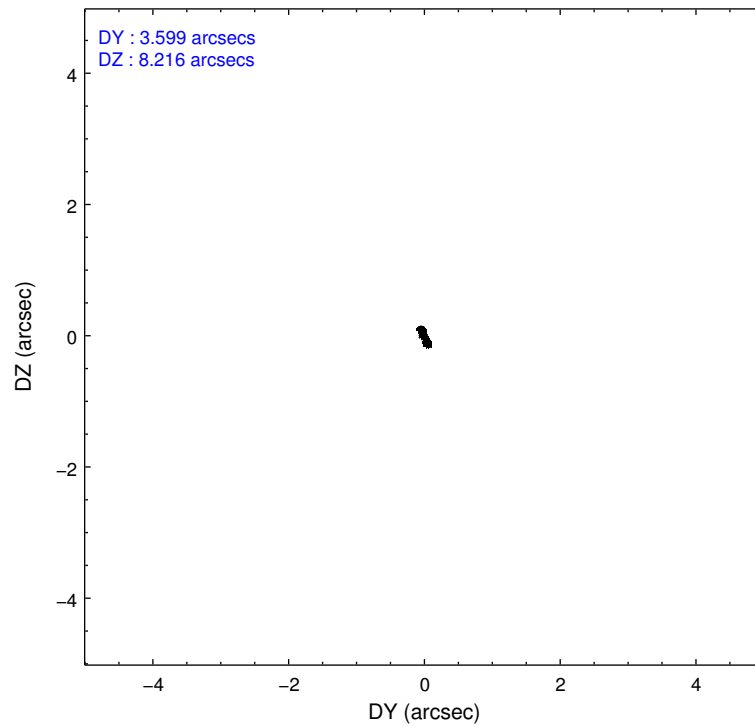
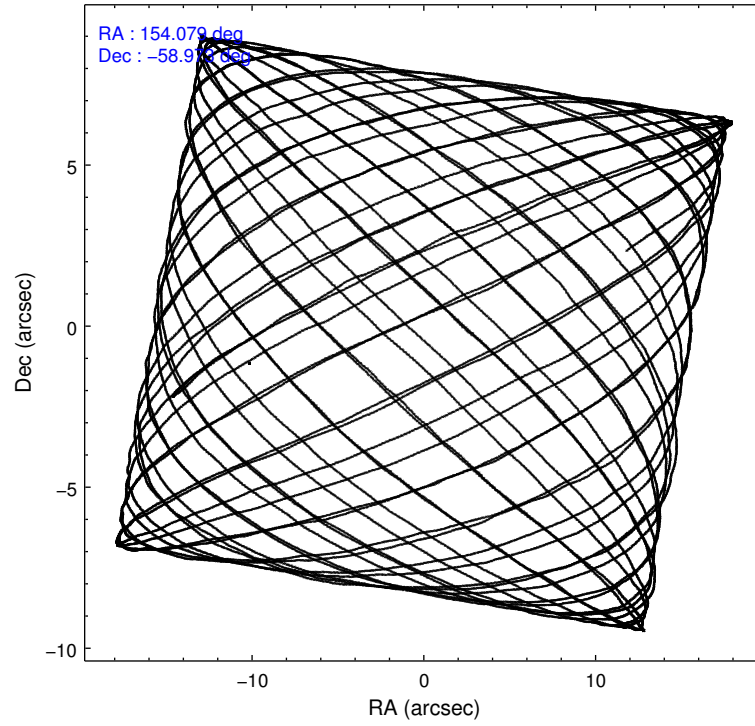
2.1.4 Events

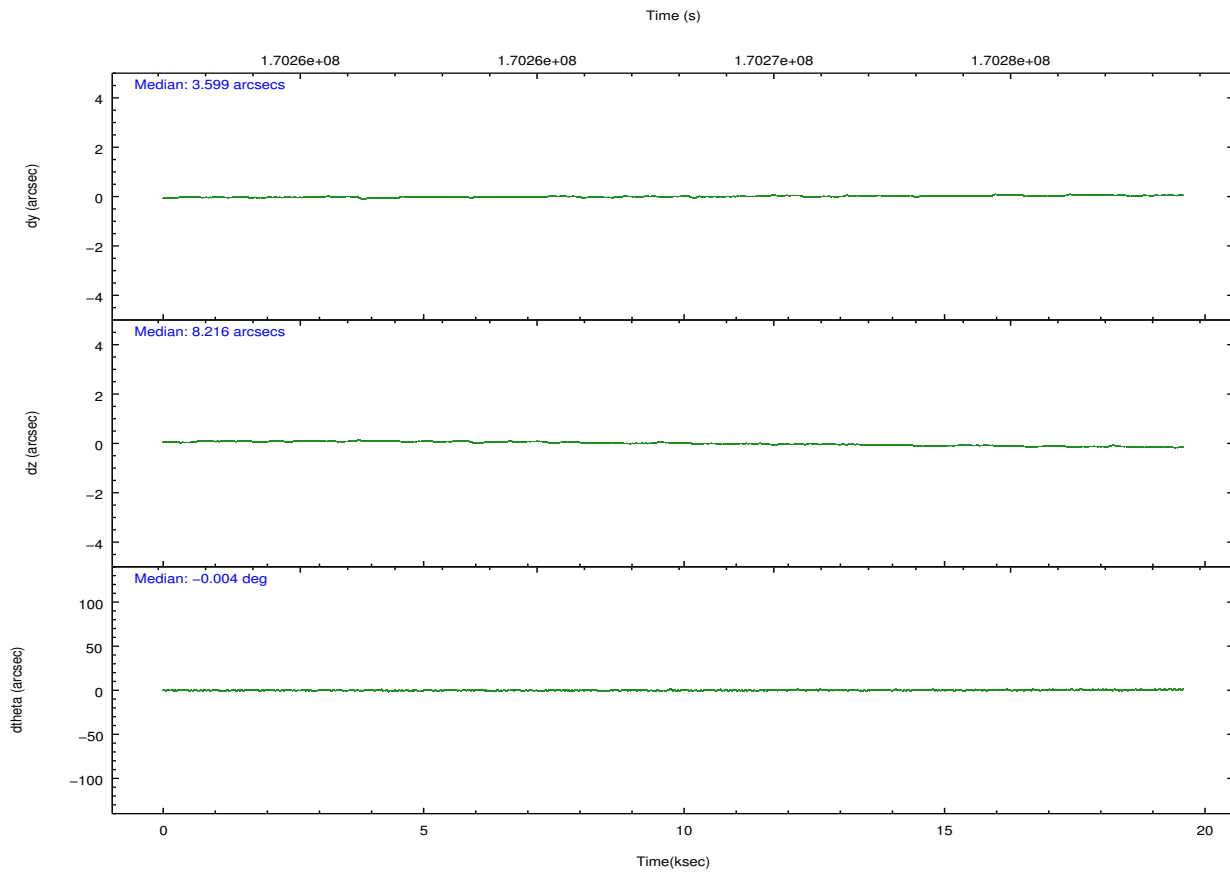
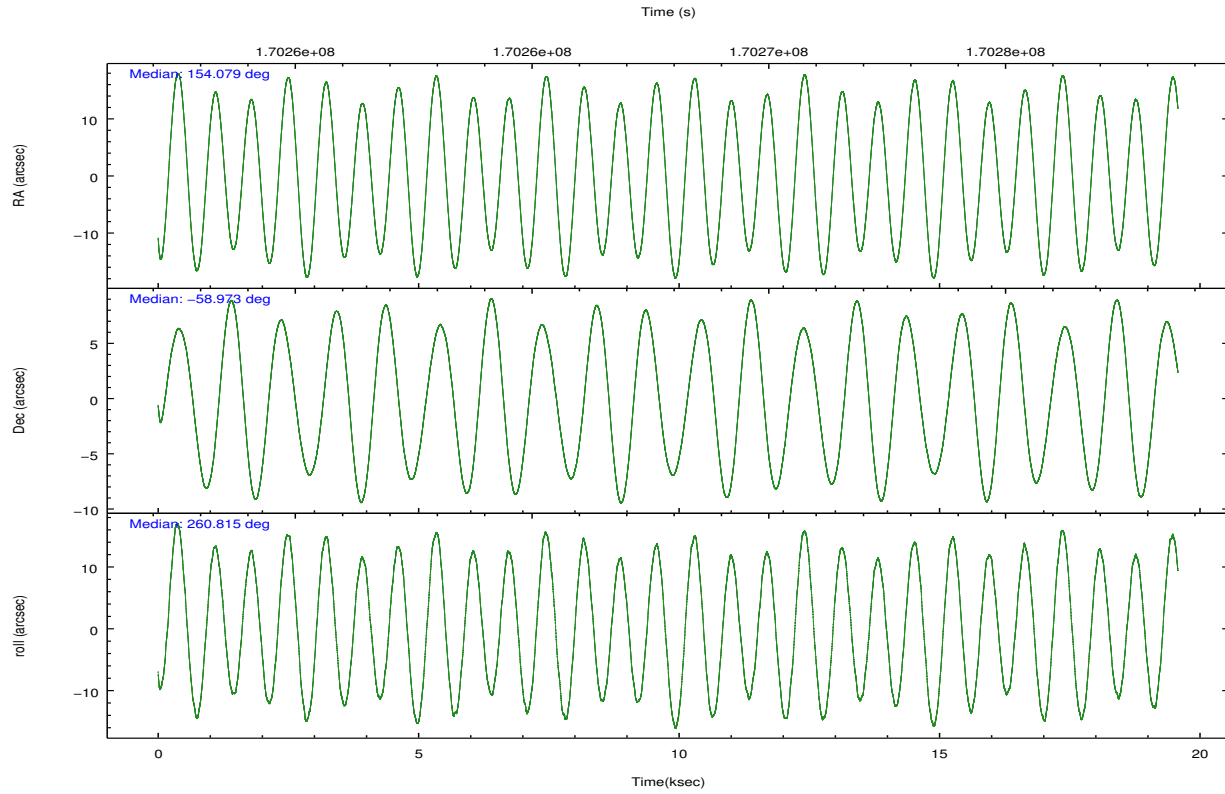
	ccd 0	ccd 1	ccd 2	ccd 3	ccd 6	ccd 7		ccd 0	ccd 1	ccd 2	ccd 3	ccd 6	ccd 7
level 1 events	91151	84439	98264	92452	99417	93170	grade 0 events	3315	3396	3829	3702	4818	5861
rejected events	81738	74836	88703	83286	88301	44454		3%	4%	3%	4%	4%	6%
rejected %	89%	88%	90%	90%	88%	47%	grade 1 events	54	49	45	53	58	88
								0%	0%	0%	0%	0%	0%
							grade 2 events	2222	2058	2122	1773	2176	10582
								2%	2%	2%	1%	2%	11%
							grade 3 events	1152	1167	1015	1049	1141	5047
								1%	1%	1%	1%	1%	5%
							grade 4 events	1025	1106	1067	1044	1122	4878
								1%	1%	1%	1%	1%	5%
							grade 5 events	2884	2883	2448	3011	3172	9598
								3%	3%	2%	3%	3%	10%
							grade 6 events	1707	1882	1529	1600	1860	22357
								1%	2%	1%	1%	1%	23%
							grade 7 events	78792	71898	86209	80220	85070	34759
								86%	85%	87%	86%	85%	37%

2.2 Compared Parameters

Parameter	Planned	Actual	Parameter	Planned	Actual
Instrument	ACIS	ACIS	Obspar format version number	7	7
Detector	ACIS-012367	ACIS-012367	Obspar file type	PREDICTED	ACTUAL
Grating	NONE	NONE	Obspar update status	NONE	UPDATED
Data mode	VFAINT	VFAINT	Number of optional ACIS chips dropped	0	0
Observation mode	POINTING	POINTING	On-chip summing requested	N	N
[deg] Pointing RA	154.059188	154.0786723969578	Subarray requested	NONE	NONE
[deg] Pointing Dec	-58.948159	-58.97343661397849	Alternating exposures requested	N	N
[deg] Pointing Roll	260.648435	260.8217532120019	[s] Primary exposure time	0.000000	3.2
[mm] SIM focus pos	-0.684267	-0.6828225247311905			
[mm] SIM defocus	0	0.001444936568705701			
[mm] SIM translation stage pos	-190.132523	-190.1400660498719			
[mm] SIM translation stage offset	0	0.00754346686406393			
[s] Observation start time (MET)	170258657.184000	170257498.59322			
Observation start date	2003-05-25T14:03:13	2003-05-25T13:44:58			
[s] Observation end time (MET)	170277657.184000	170278369.6441			
Observation end date	2003-05-25T19:19:53	2003-05-25T19:32:49			
Read mode	TIMED	TIMED			

2.3 Aspect





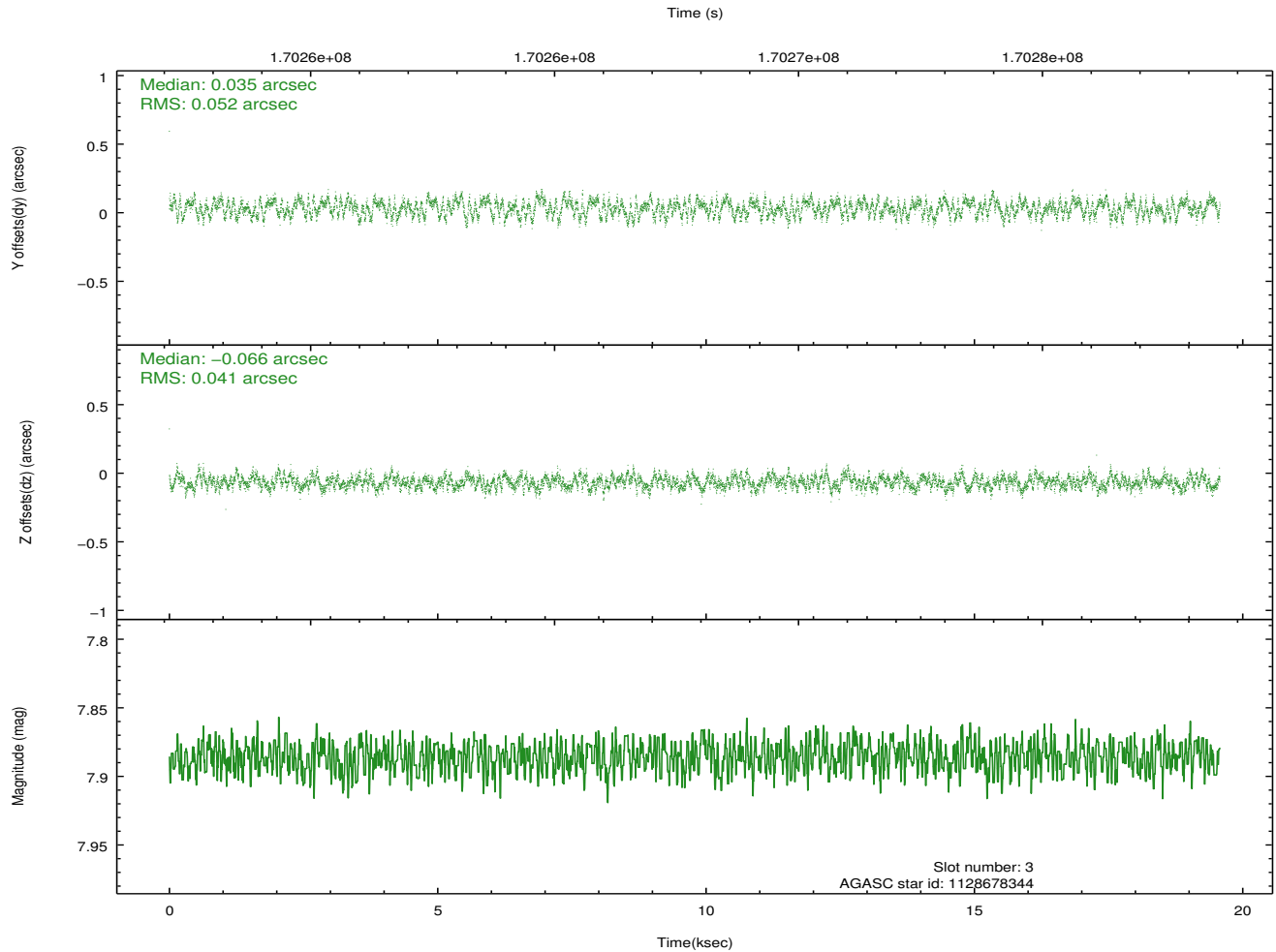
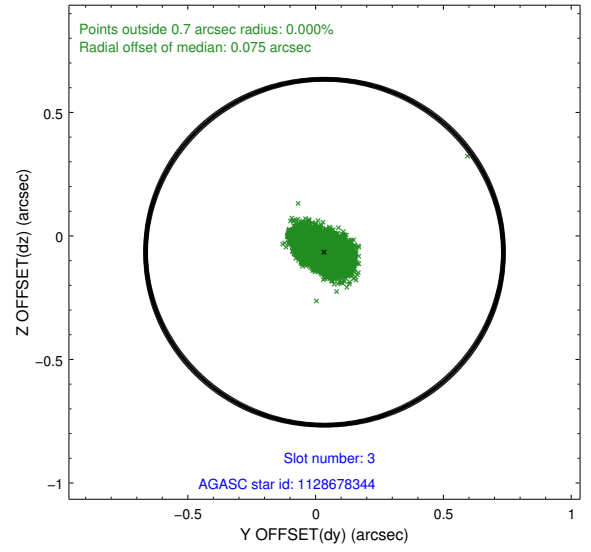
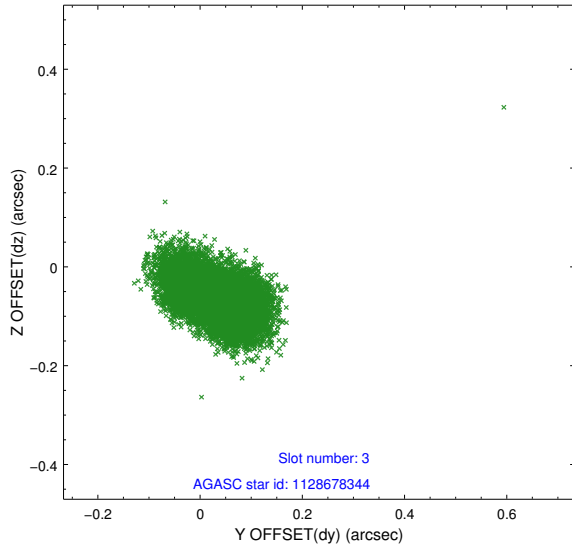
Slot Statistics

slot	status	id	mag	n_pts	med_dy	med_dz	dr1	dr2	ra	dec	mean_y	mean_z
0	FID	ACIS-S-1	7.19	4775	0.042	-0.007	0.009	0.016	0.000000	0.000000	939.78	-1725.06
1	FID	ACIS-S-5	7.25	4776	-0.060	0.041	0.007	0.013	0.000000	0.000000	-1809.17	172.40
2	FID	ACIS-S-6	7.36	4775	-0.003	-0.022	0.009	0.014	0.000000	0.000000	405.14	816.47
3	GUIDE	1128678344	7.89	9551	0.035	-0.066	0.071	0.113	152.732495	-59.154360	1154.86	-2291.47
4	GUIDE	1128802696	7.22	9551	-0.117	-0.029	0.065	0.110	155.284467	-58.483825	-2003.31	2006.50
5	GUIDE	1128798008	8.57	9549	-0.071	-0.002	0.065	0.103	153.338718	-58.362994	-1850.26	-1683.50
6	GUIDE	1128811864	7.61	9550	0.113	0.085	0.059	0.093	155.133167	-59.636346	2142.46	2333.77
7	GUIDE	1128810872	8.98	9544	0.038	0.014	0.083	0.130	155.210227	-59.411993	1323.18	2355.19

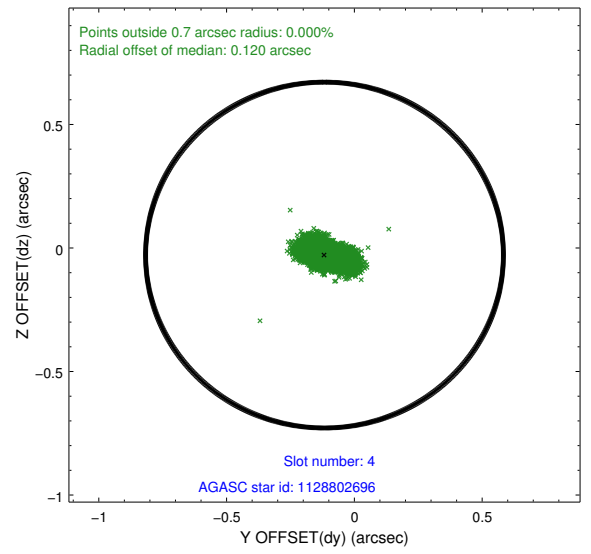
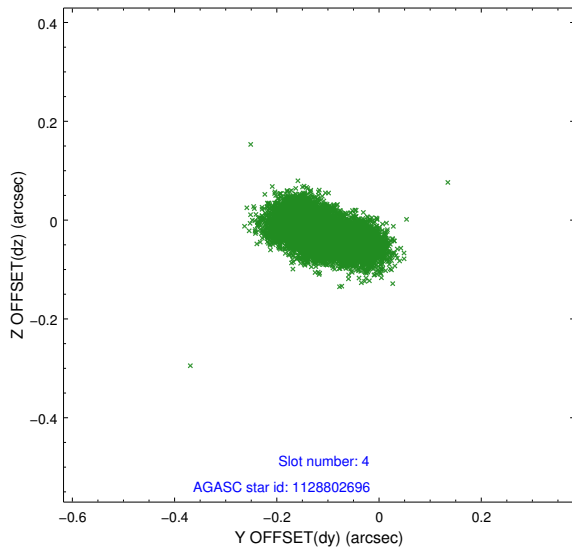
∞

2.4 Star Slots

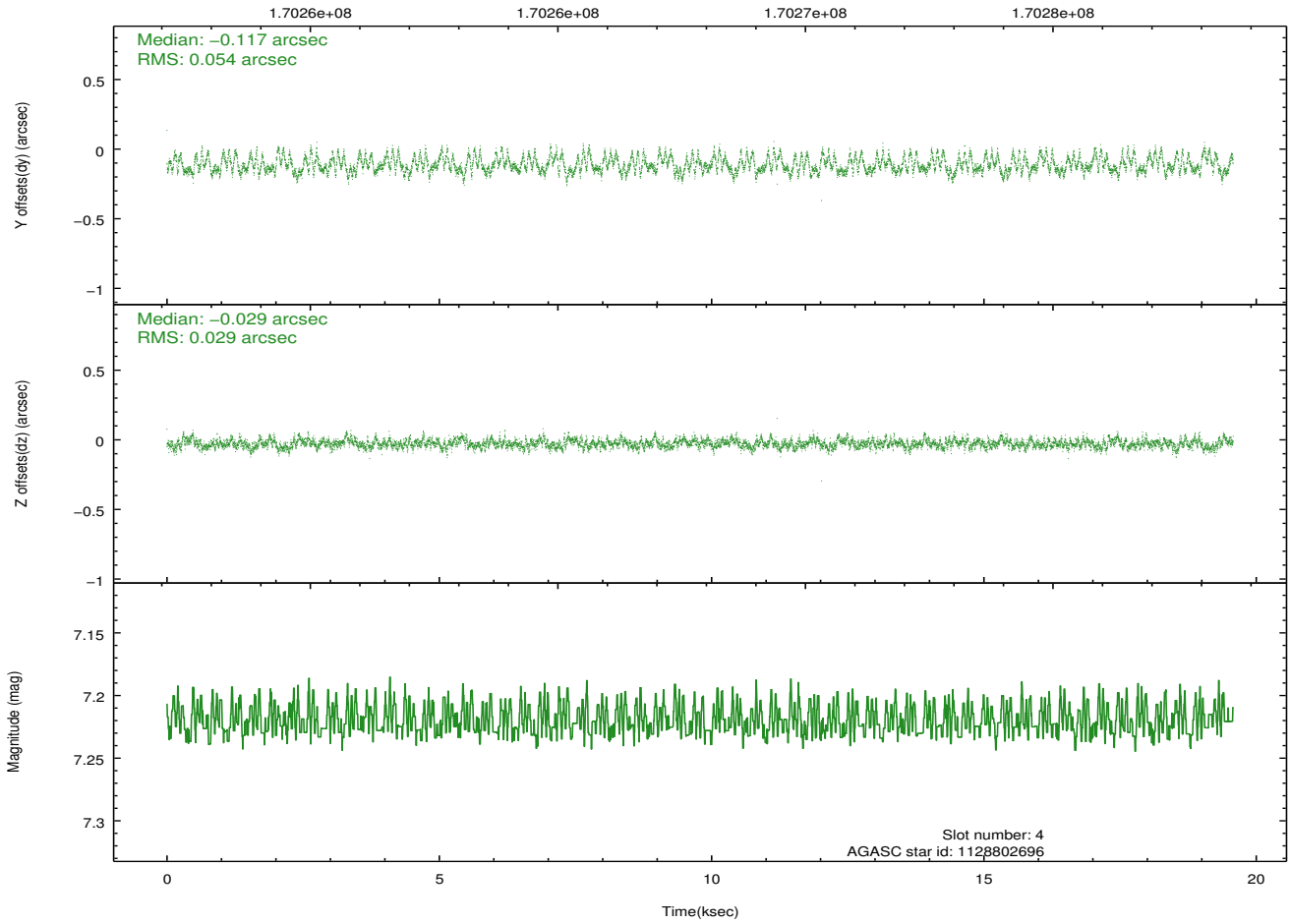
2.4.1 Slot 3



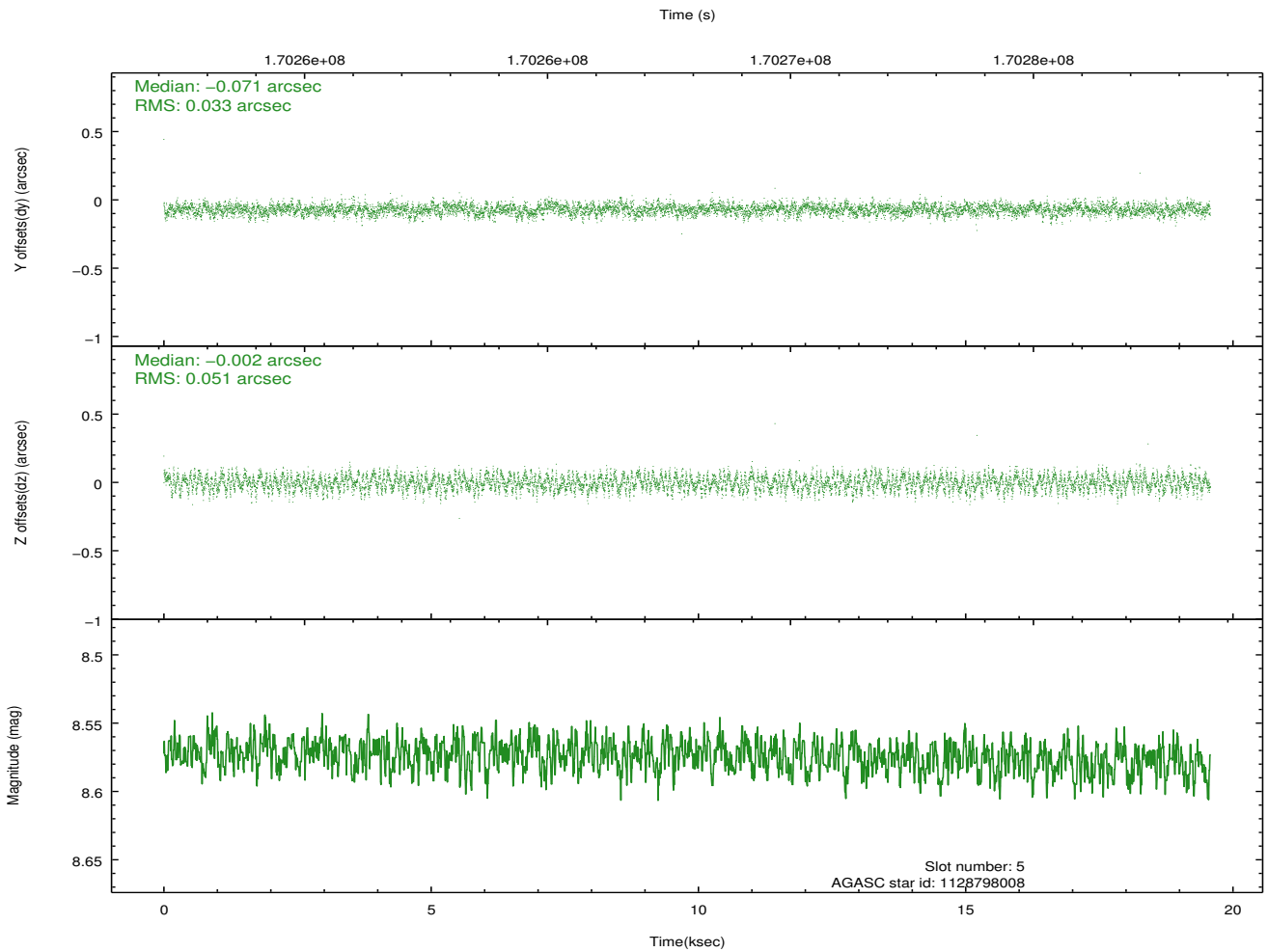
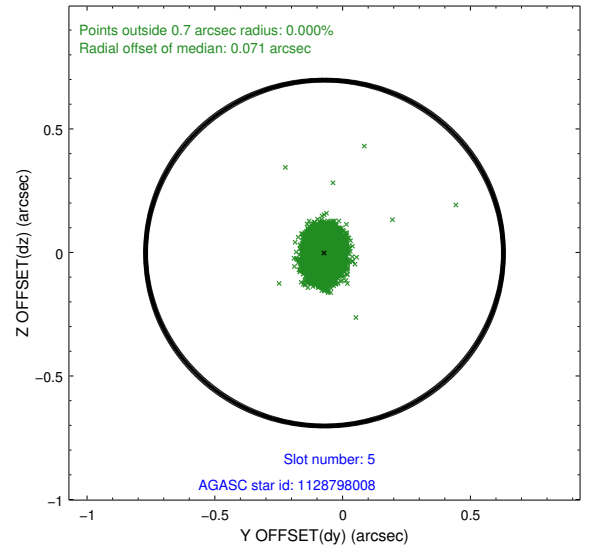
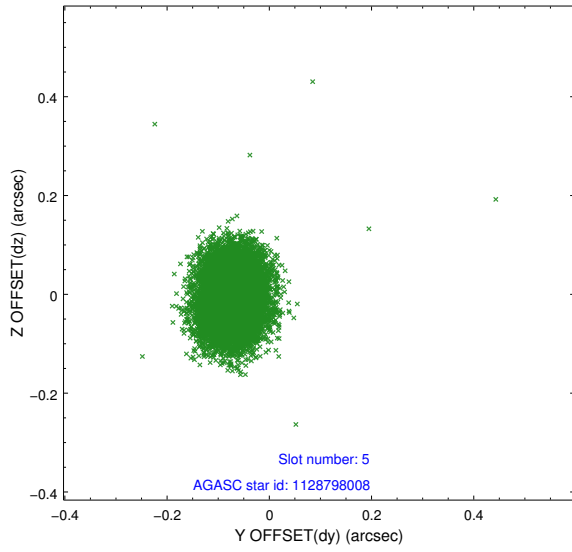
2.4.2 Slot 4



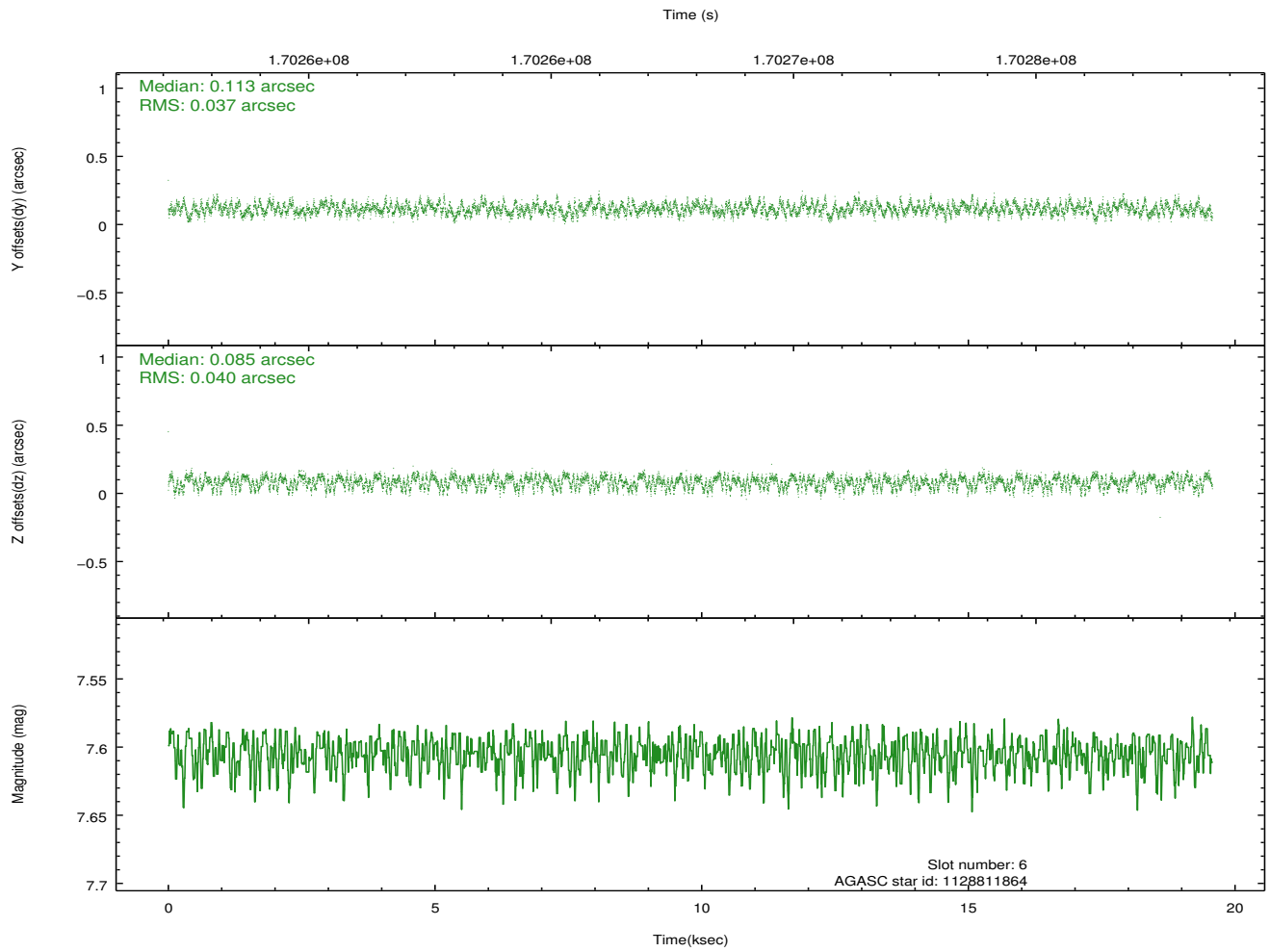
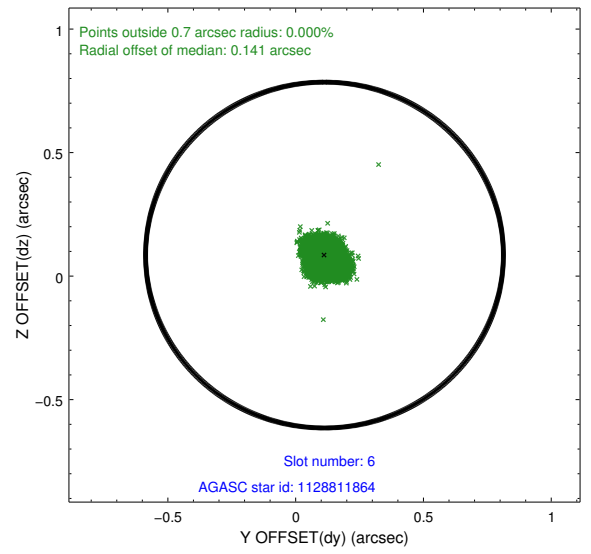
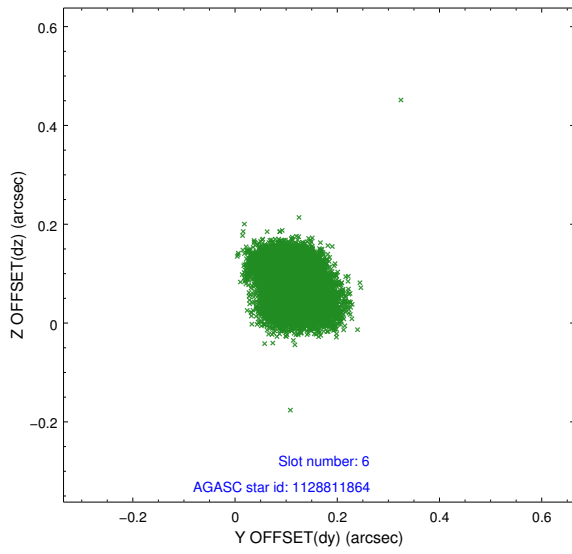
Time (s)



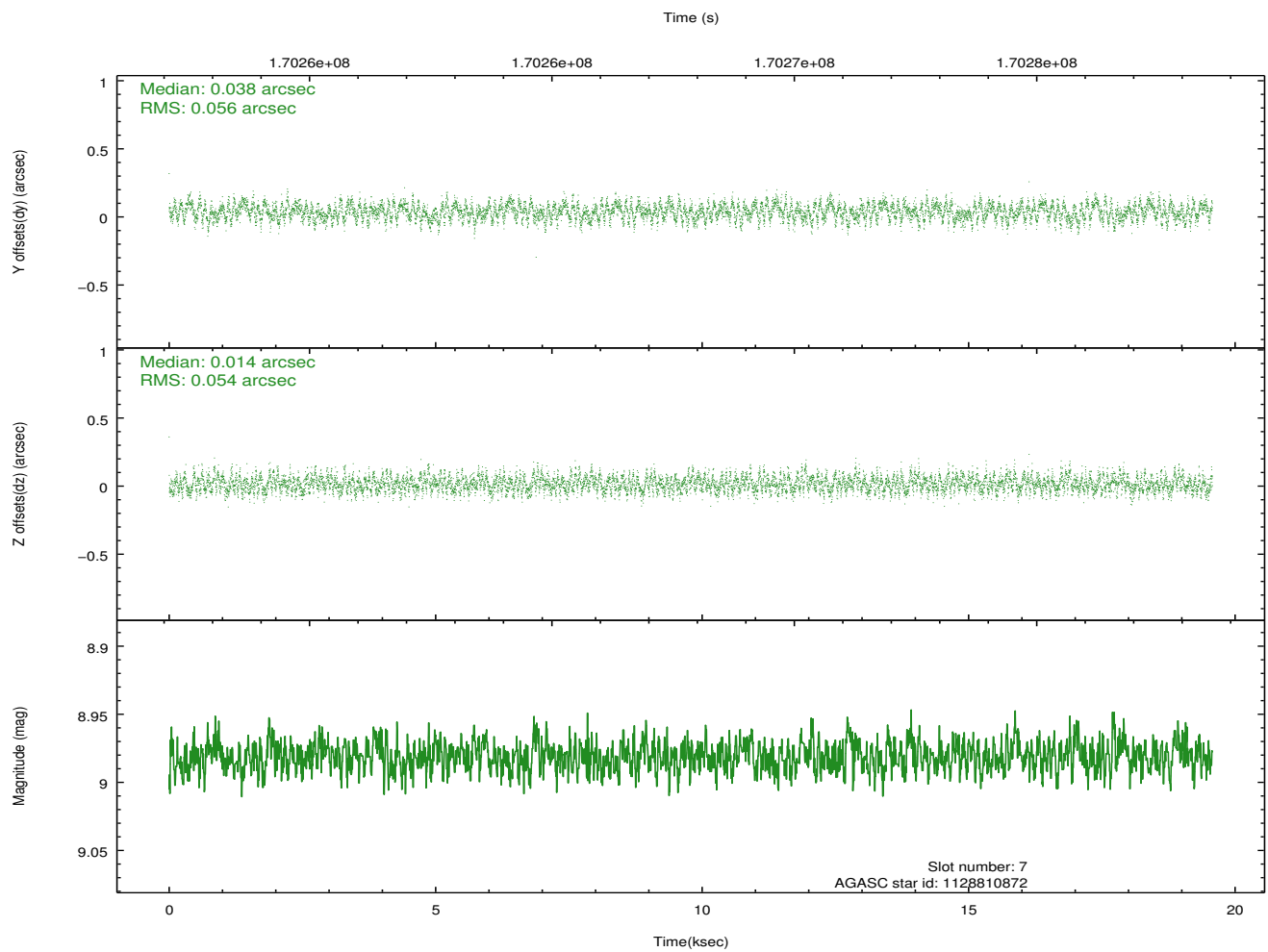
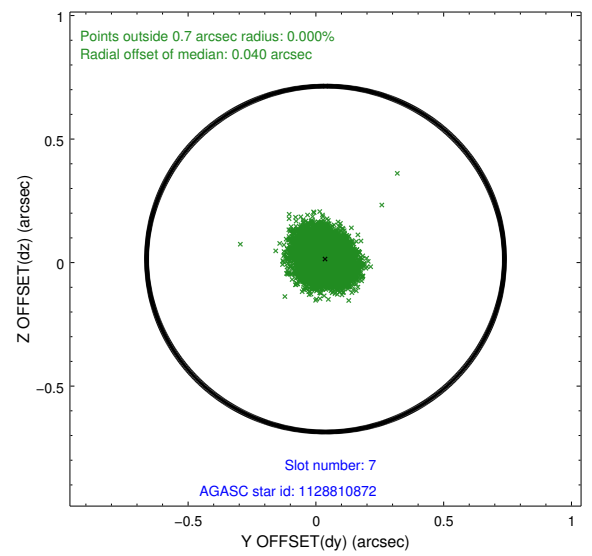
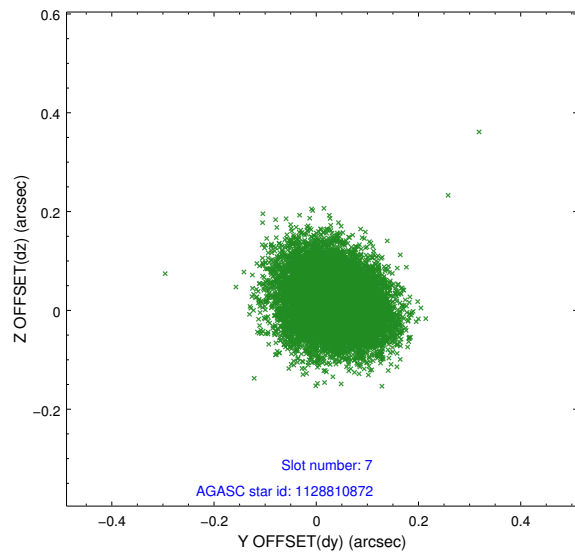
2.4.3 Slot 5



2.4.4 Slot 6

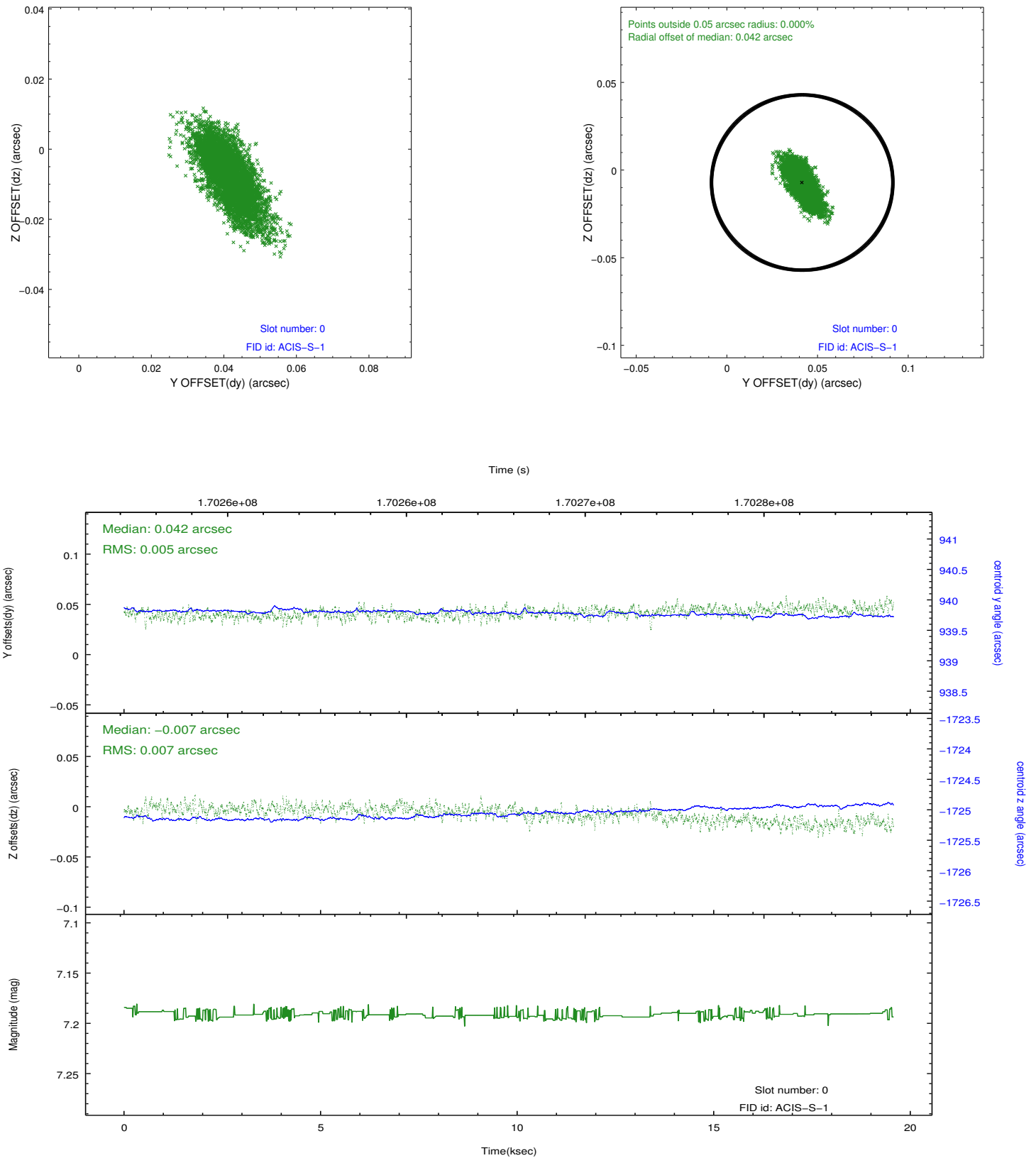


2.4.5 Slot 7

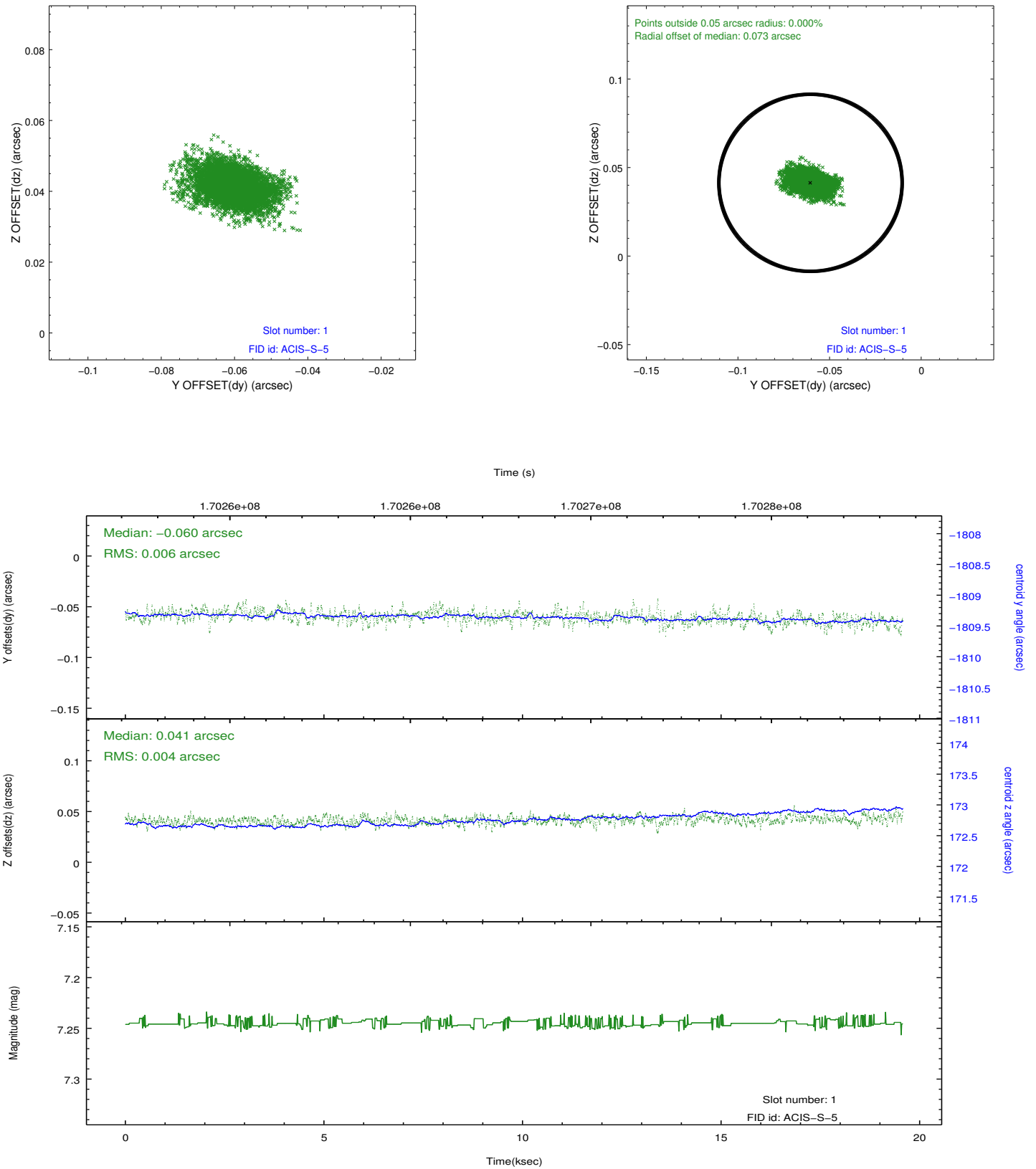


2.5 FID Slots

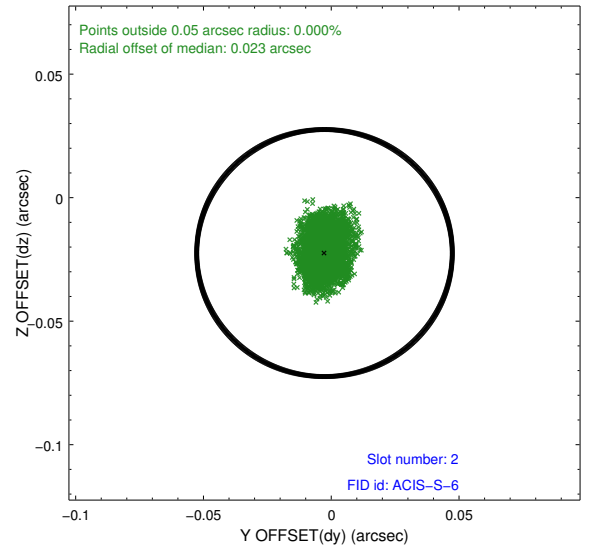
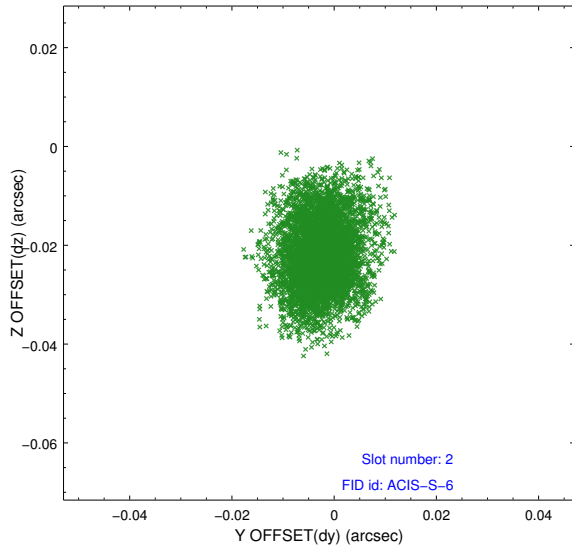
2.5.1 Slot 0



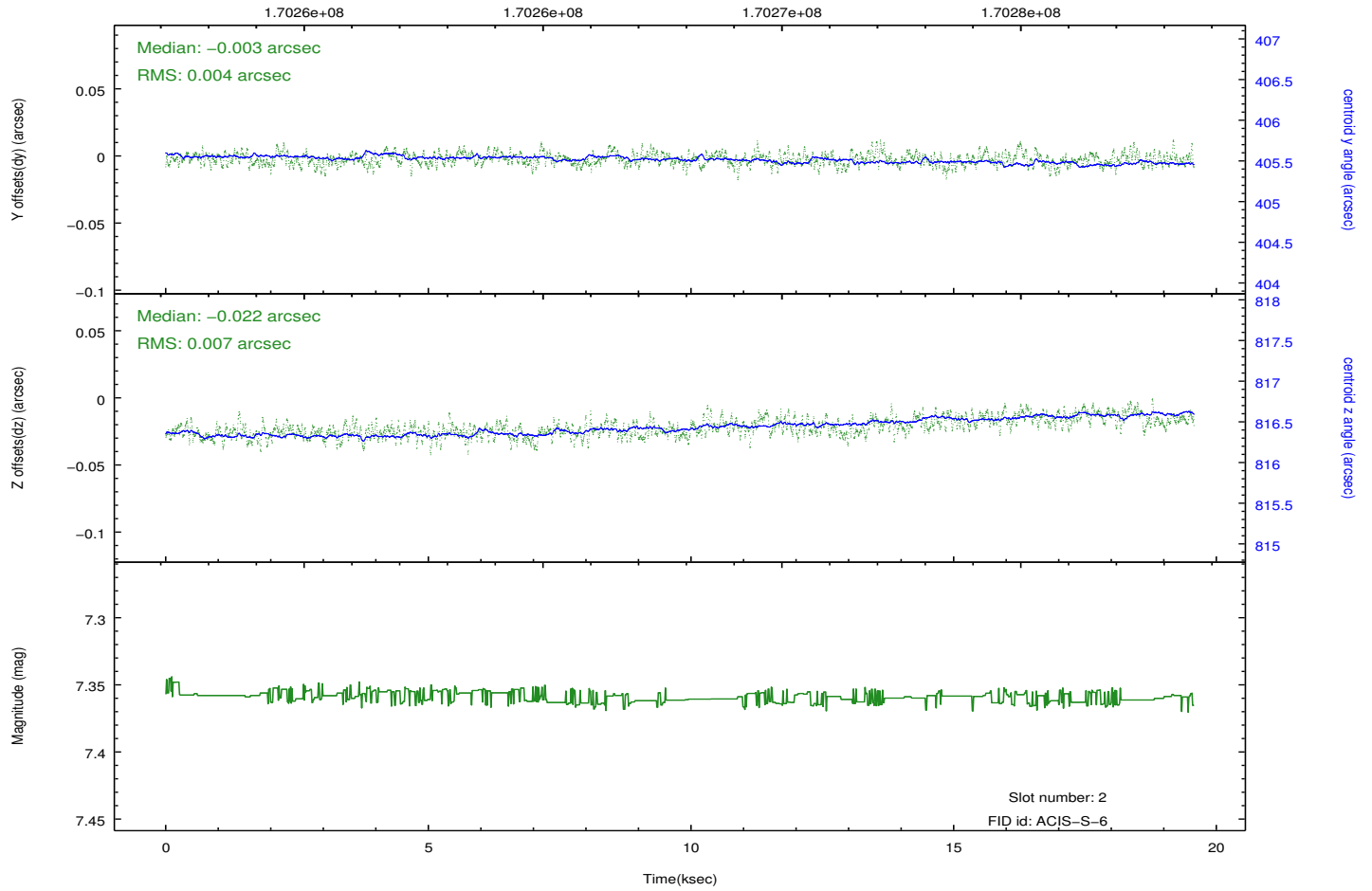
2.5.2 Slot 1



2.5.3 Slot 2



Time (s)



A Summary

A.1 Status

V&V Scientist	Jen Lauer
V&V Date (YYYY-MM-DD)	2012.11.15
V&V Edition	1
V&V Disposition and Status	OK
V&V Charge Time	18.963

A.2 Comments