

V&V Reference Report

L2 ASCDS Version : 8.4.5

Observation 3955 - L2 Version 3
Chandra X-Ray Center

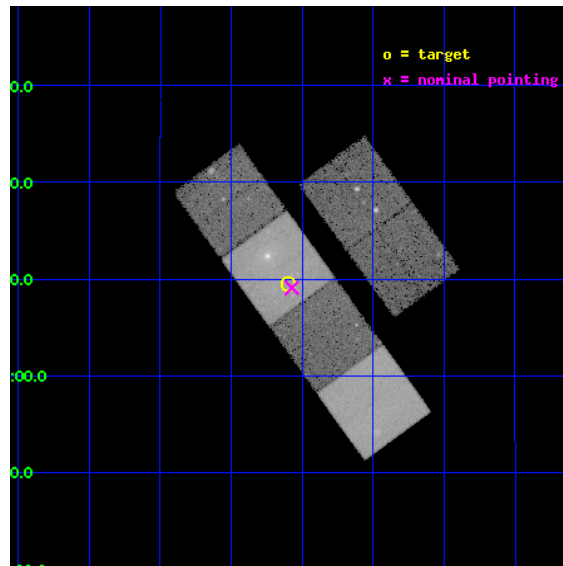
L2 Processing Date : Nov 4 2012

Contents

1	Front	2
2	OBI	3
2.1	OBI	3
2.1.1	Images	3
2.1.2	Bias	3
2.1.3	Parameters	4
2.1.4	Events	4
2.2	Compared Parameters	5
2.3	Aspect	6
2.4	Star Slots	9
2.4.1	Slot 3	9
2.4.2	Slot 4	10
2.4.3	Slot 5	11
2.4.4	Slot 6	12
2.4.5	Slot 7	13
2.5	FID Slots	14
2.5.1	Slot 0	14
2.5.2	Slot 1	15
2.5.3	Slot 2	16
A	Summary	17
A.1	Status	17
A.2	Comments	17

1 Front

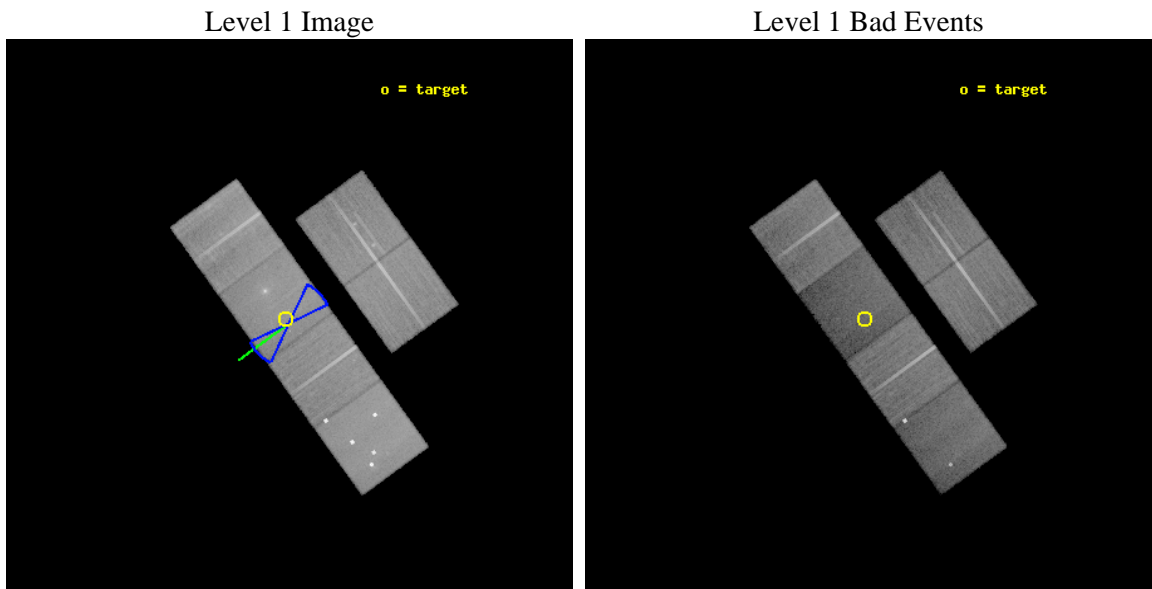
seq_num	600329	Sequence number
obs_id	3955	Observation id
title	X-RAY TAILS IN EARLY TYPE GALAXIES	Proposal title
observer	Dr Dong-Woo Kim	Principal investigator
object	NGC 7619	Source name
dtycycle	0	
cycle	P	events from which exps? Prim/Second/Both
ra_targ	350.025	Observer's specified target RA [deg]
dec_targ	8.158333	Observer's specified target Dec [deg]
ra_nom	350.01796556013	Nominal RA [deg]
dec_nom	8.1516079427475	Nominal Dec [deg]
roll_nom	234.04378443777	Nominal Roll [deg]
revision	3	Processing version of data
ontime	37954.60553968	Sum of GTIs [s]
livetime	37474.001470816	Livetime [s]
ontime2	37961.128540248	Sum of GTIs [s]
ontime3	37957.723399967	Sum of GTIs [s]
ontime5	37957.805460066	Sum of GTIs [s]
ontime6	37948.04147923	Sum of GTIs [s]
ontime7	37954.60553968	Sum of GTIs [s]
ontime8	37957.682359993	Sum of GTIs [s]
l2events	319873	Number of level 2 events



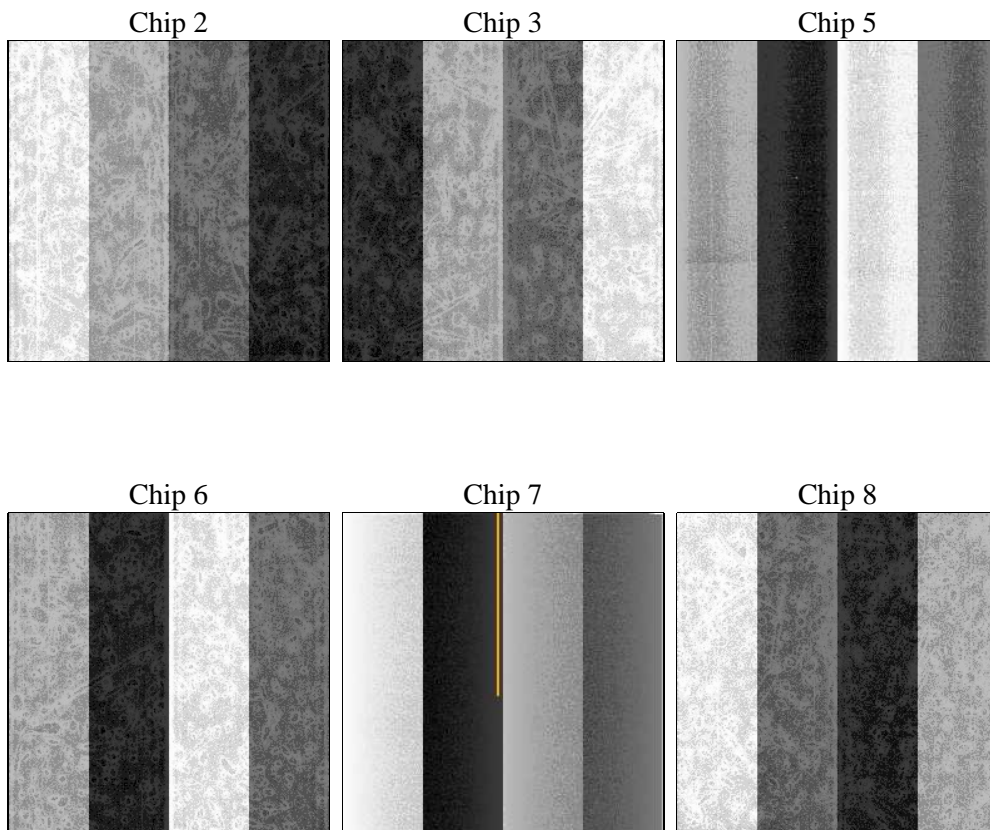
2 OBI

2.1 OBI

2.1.1 Images



2.1.2 Bias



2.1.3 Parameters

obi_num	0	Obi number	sched_exp_time	38000.000000	[s] Scheduled observation exposure time
ascdsver	8.4.5	Processing system revision	ontime	37954.60553968	Sum of GTIs [s]
caldbver	4.5.2	 	ontime2	37961.128540248	Sum of GTIs [s]
date	2012-11-04T12:00:01	Date and time of file creation	ontime3	37957.723399967	Sum of GTIs [s]
revision	3	Processing version of data	ontime5	37957.805460066	Sum of GTIs [s]
			ontime6	37948.04147923	Sum of GTIs [s]
			ontime7	37954.60553968	Sum of GTIs [s]
			ontime8	37957.682359993	Sum of GTIs [s]
			l1events	1342714	Number of level 1 events

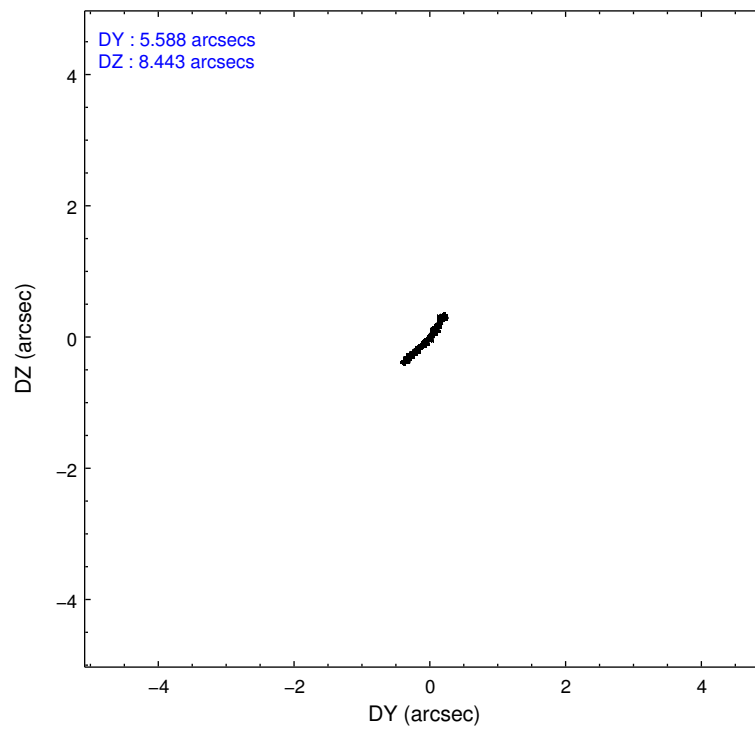
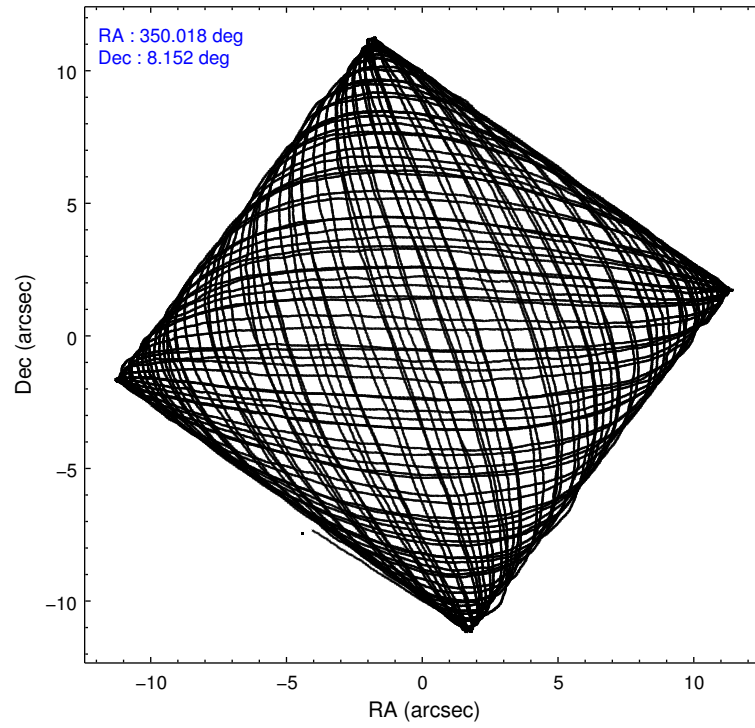
2.1.4 Events

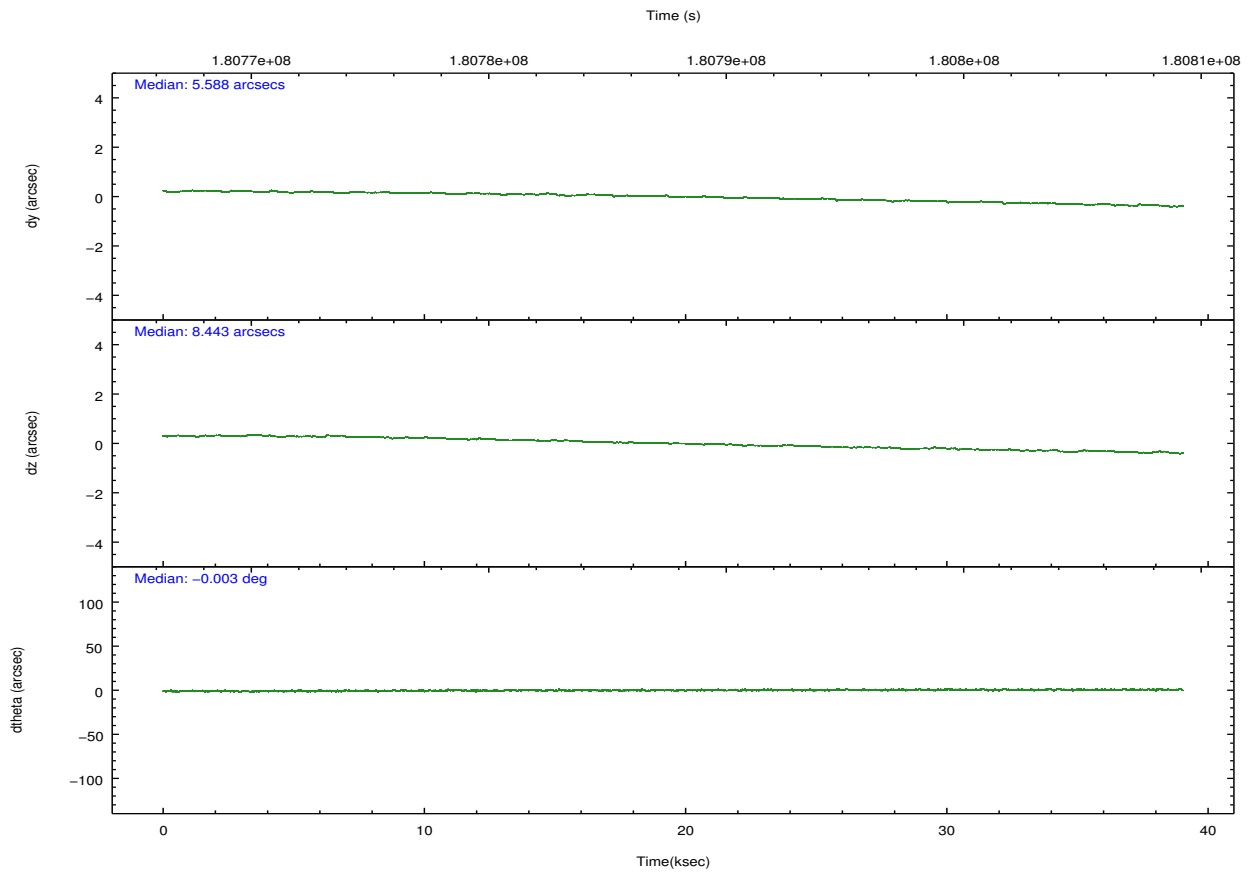
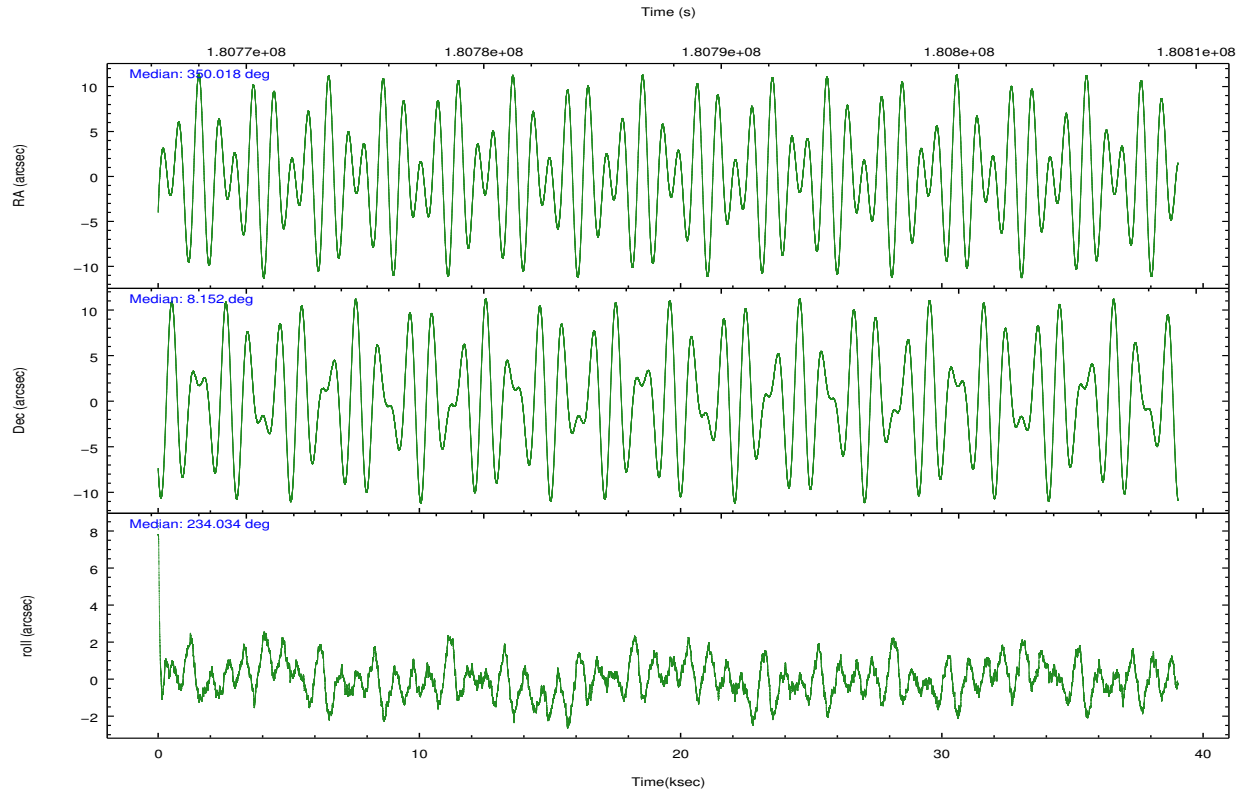
	ccd 2	ccd 3	ccd 5	ccd 6	ccd 7	ccd 8		ccd 2	ccd 3	ccd 5	ccd 6	ccd 7	ccd 8
level 1 events	212213	191535	291627	200324	212095	234920	grade 0 events	7760	8951	43901	10191	16204	16950
rejected events	192773	171190	116849	177231	92021	181907		3%	4%	15%	5%	7%	7%
rejected %	90%	89%	40%	88%	43%	77%	grade 1 events	105	88	5408	99	186	160
								0%	0%	1%	0%	0%	0%
							grade 2 events	4262	3741	48864	4365	25996	11684
								2%	1%	16%	2%	12%	4%
							grade 3 events	2149	2115	7460	2285	12022	5521
								1%	1%	2%	1%	5%	2%
							grade 4 events	2140	2206	7041	2262	11910	5296
								1%	1%	2%	1%	5%	2%
							grade 5 events	5382	6314	20565	6391	19859	9531
								2%	3%	7%	3%	9%	4%
							grade 6 events	3133	3334	67530	3998	53954	13565
								1%	1%	23%	1%	25%	5%
							grade 7 events	187282	164786	90858	170733	71964	172213
								88%	86%	31%	85%	33%	73%

2.2 Compared Parameters

Parameter	Planned	Actual	Parameter	Planned	Actual
Instrument	ACIS	ACIS	Obspar format version number	7	7
Detector	ACIS-235678	ACIS-235678	Obspar file type	PREDICTED	ACTUAL
Grating	NONE	NONE	Obspar update status	NONE	UPDATED
Data mode	VFAINT	VFAINT	Number of optional ACIS chips dropped	0	0
Observation mode	POINTING	POINTING	On-chip summing requested	N	N
[deg] Pointing RA	350.020448	350.0179655601282	Subarray requested	NONE	NONE
[deg] Pointing Dec	8.178740	8.151607942747489	Alternating exposures requested	N	N
[deg] Pointing Roll	233.886807	234.0437844377697	[s] Primary exposure time	0.000000	3.2
[deg] Roll angle	225.000000	225.000000			
[deg] Roll tolerance	20.000000	20.000000			
Roll constraint allows 180D rotation	Y	Y			
[mm] SIM focus pos	-0.684267	-0.6828225247311905			
[mm] SIM defocus	0	0.001444936568705701			
[mm] SIM translation stage pos	-190.132523	-190.1400660498719			
[mm] SIM translation stage offset	0	0.00754346686406393			
[s] Observation start time (MET)	180769278.184000	180767889.52899			
Observation start date	2003-09-24T05:40:14	2003-09-24T05:18:09			
[s] Observation end time (MET)	180807278.184000	180808235.58072			
Observation end date	2003-09-24T16:13:34	2003-09-24T16:30:35			
Read mode	TIMED	TIMED			

2.3 Aspect



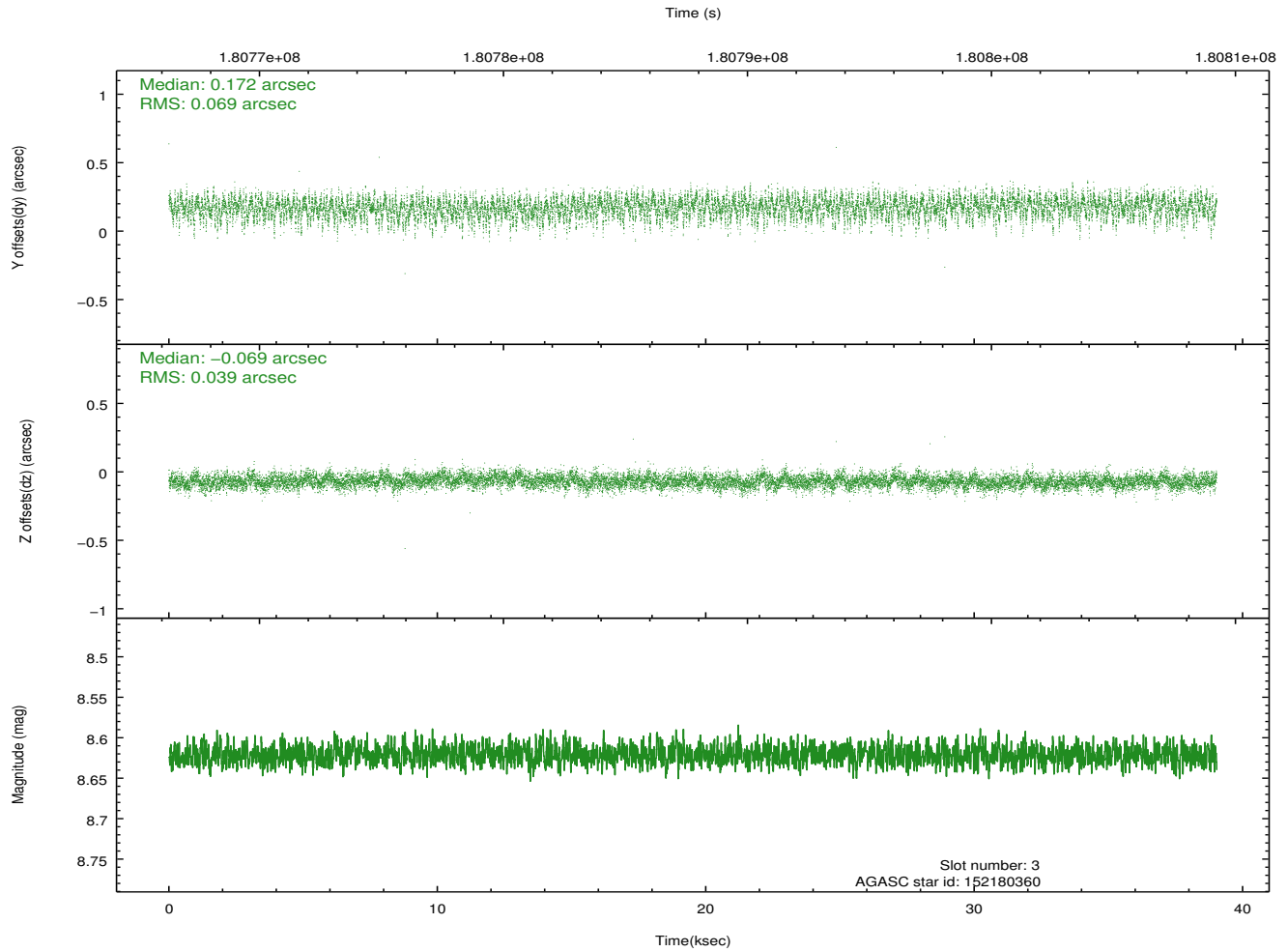
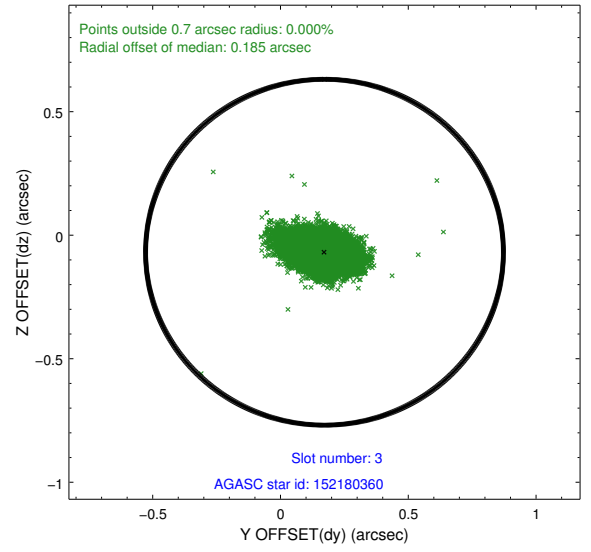
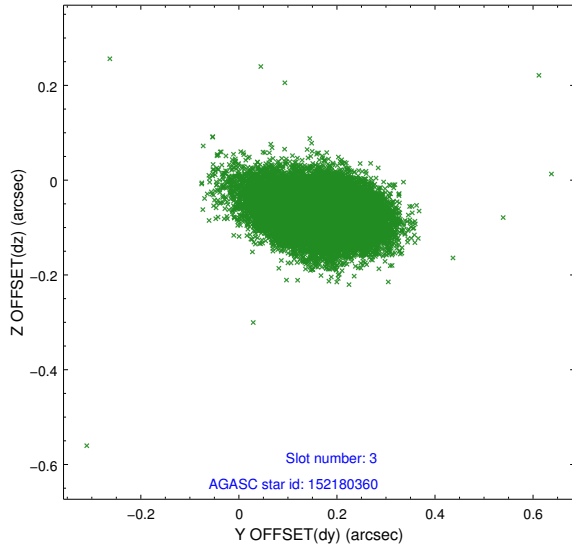


Slot Statistics

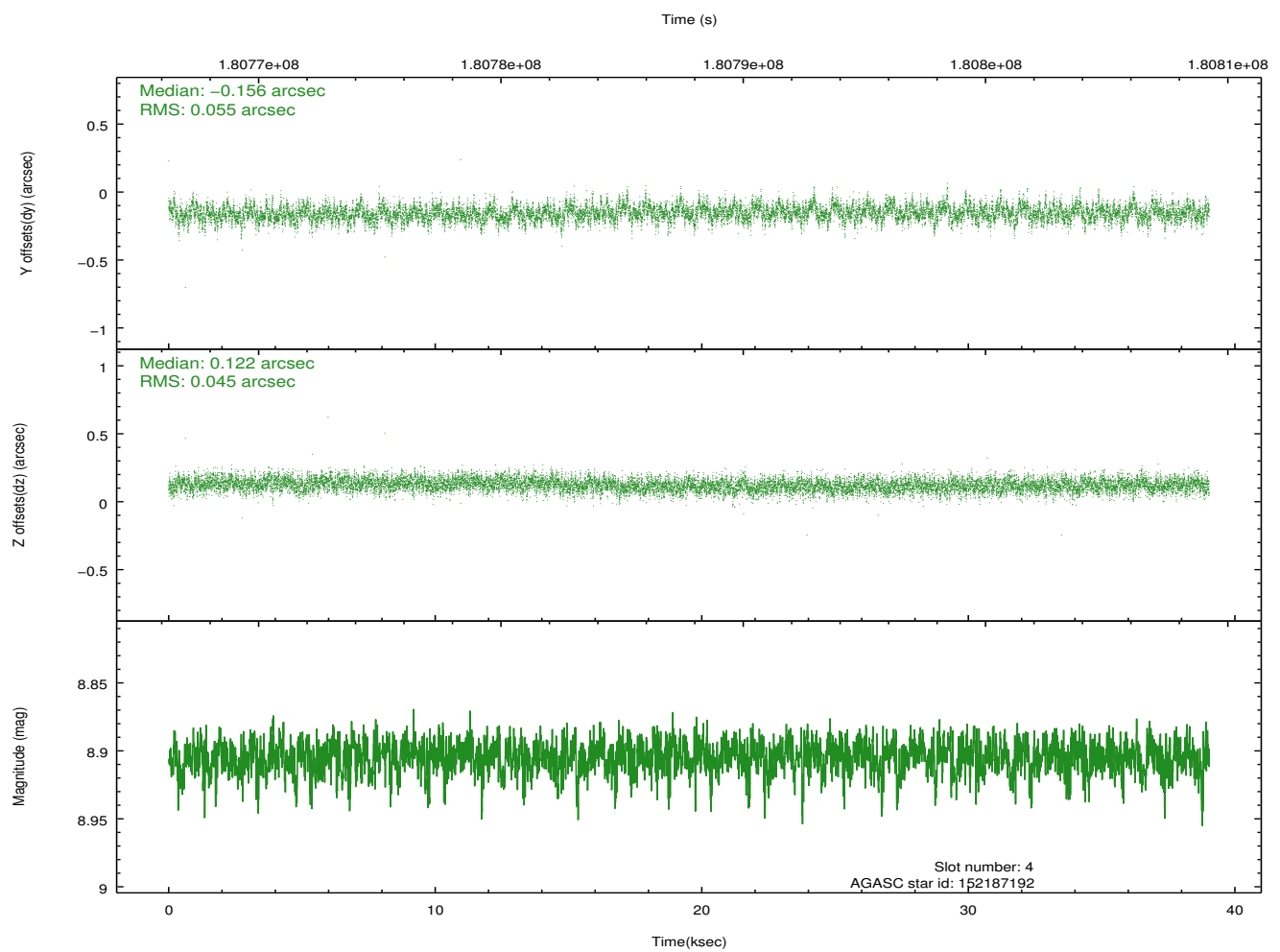
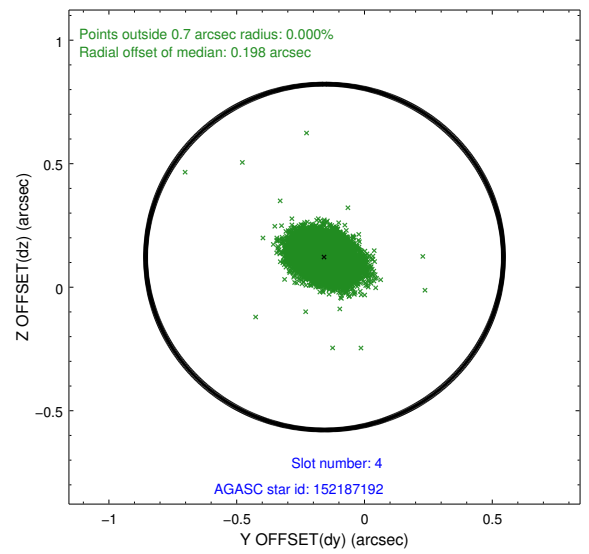
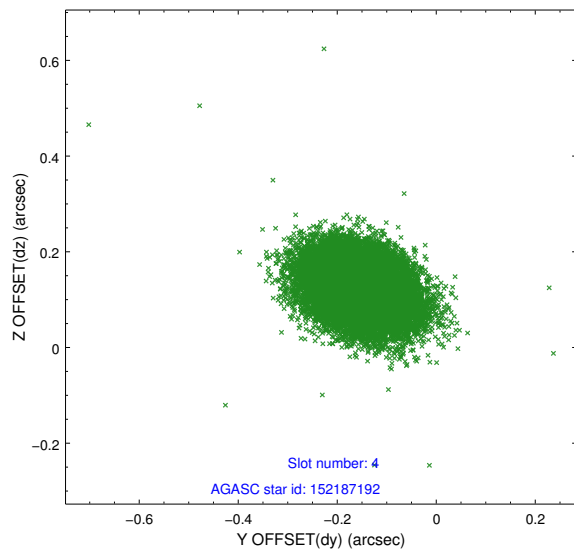
slot	status	id	mag	n_pts	med_dy	med_dz	dr1	dr2	ra	dec	mean_y	mean_z
0	FID	ACIS-S-2	7.11	9519	-0.040	-0.051	0.011	0.018	0.000000	0.000000	-758.34	-1729.68
1	FID	ACIS-S-4	7.20	9518	0.087	0.033	0.016	0.027	0.000000	0.000000	2155.08	178.82
2	FID	ACIS-S-5	7.22	9519	-0.076	0.027	0.016	0.026	0.000000	0.000000	-1811.16	172.56
3	GUIDE	152180360	8.62	19036	0.172	-0.069	0.081	0.140	349.110181	8.037159	2322.05	-2322.41
4	GUIDE	152187192	8.90	19033	-0.156	0.122	0.074	0.124	349.378103	8.213055	1248.16	-1922.32
5	GUIDE	152310496	8.99	19035	-0.013	0.033	0.085	0.137	350.630549	8.225229	-1417.79	1656.54
6	GUIDE	152315576	9.61	19027	-0.011	0.099	0.087	0.143	349.949542	9.018547	-2293.46	-1985.51
7	GUIDE	152320064	9.31	19027	0.009	-0.185	0.101	0.164	350.730376	8.067746	-1171.13	2278.89

2.4 Star Slots

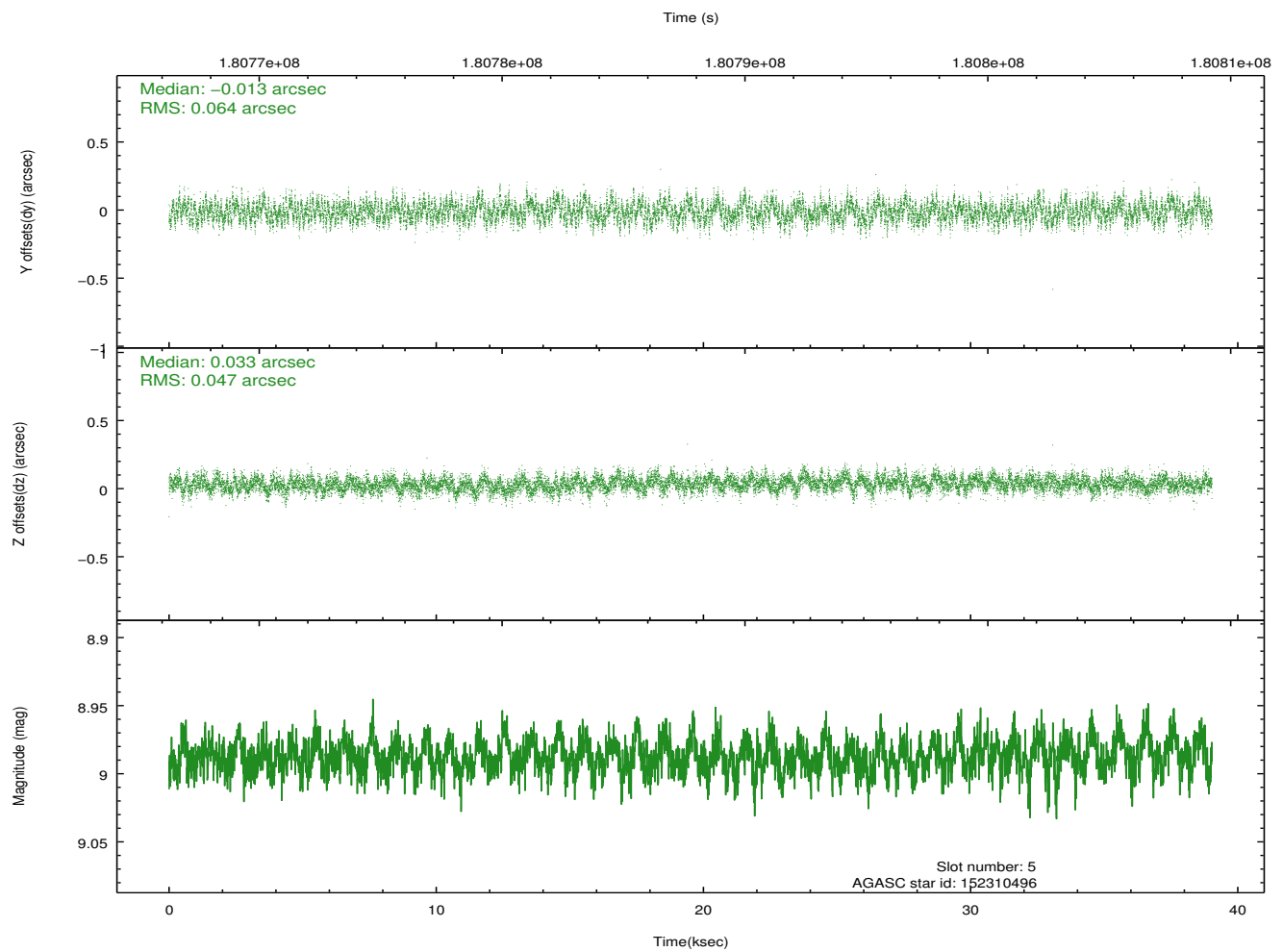
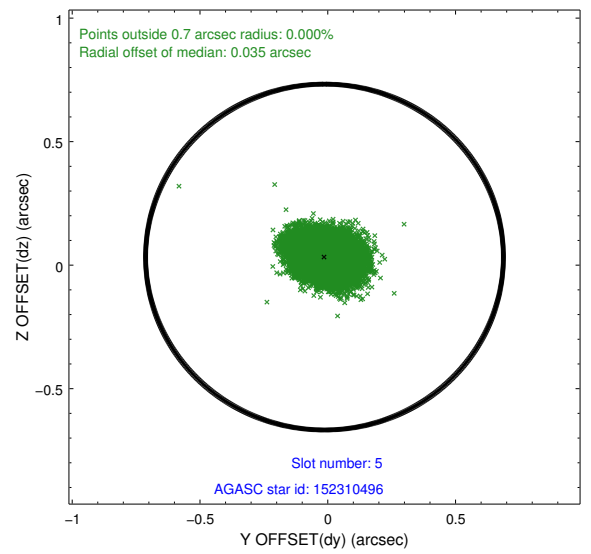
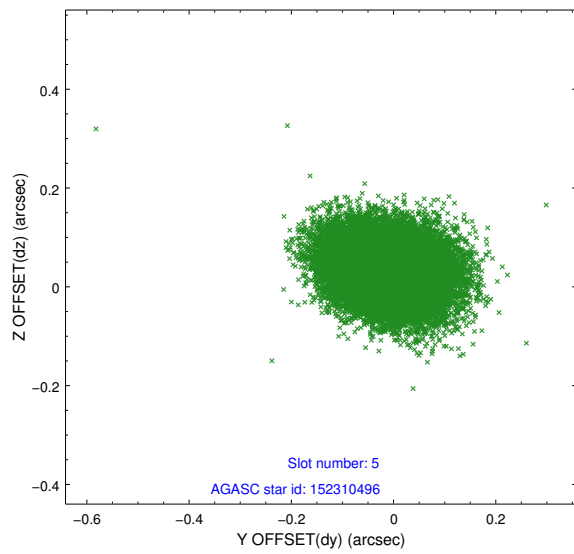
2.4.1 Slot 3



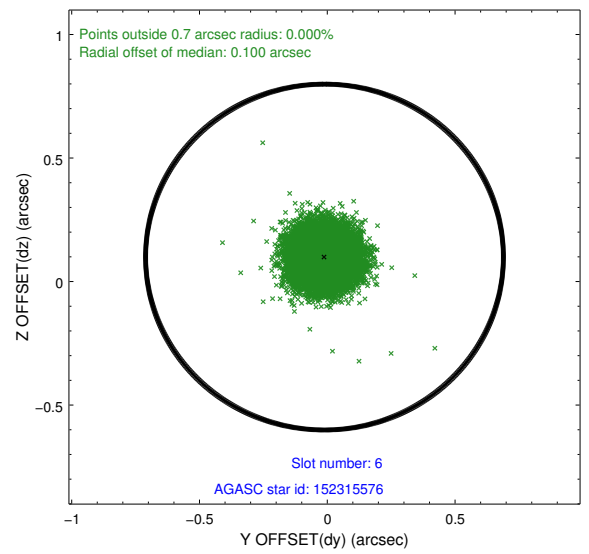
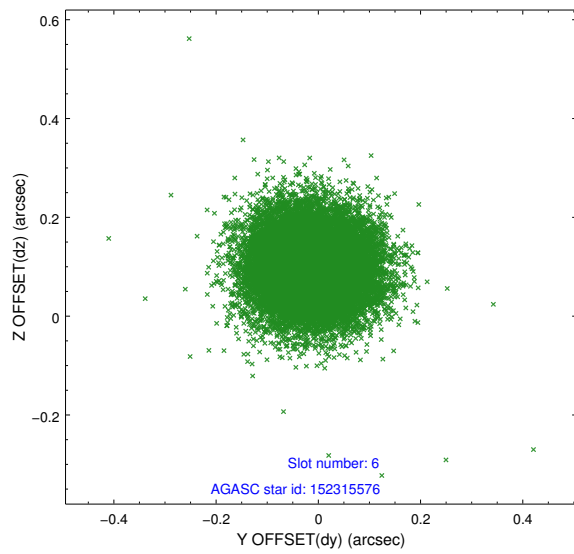
2.4.2 Slot 4



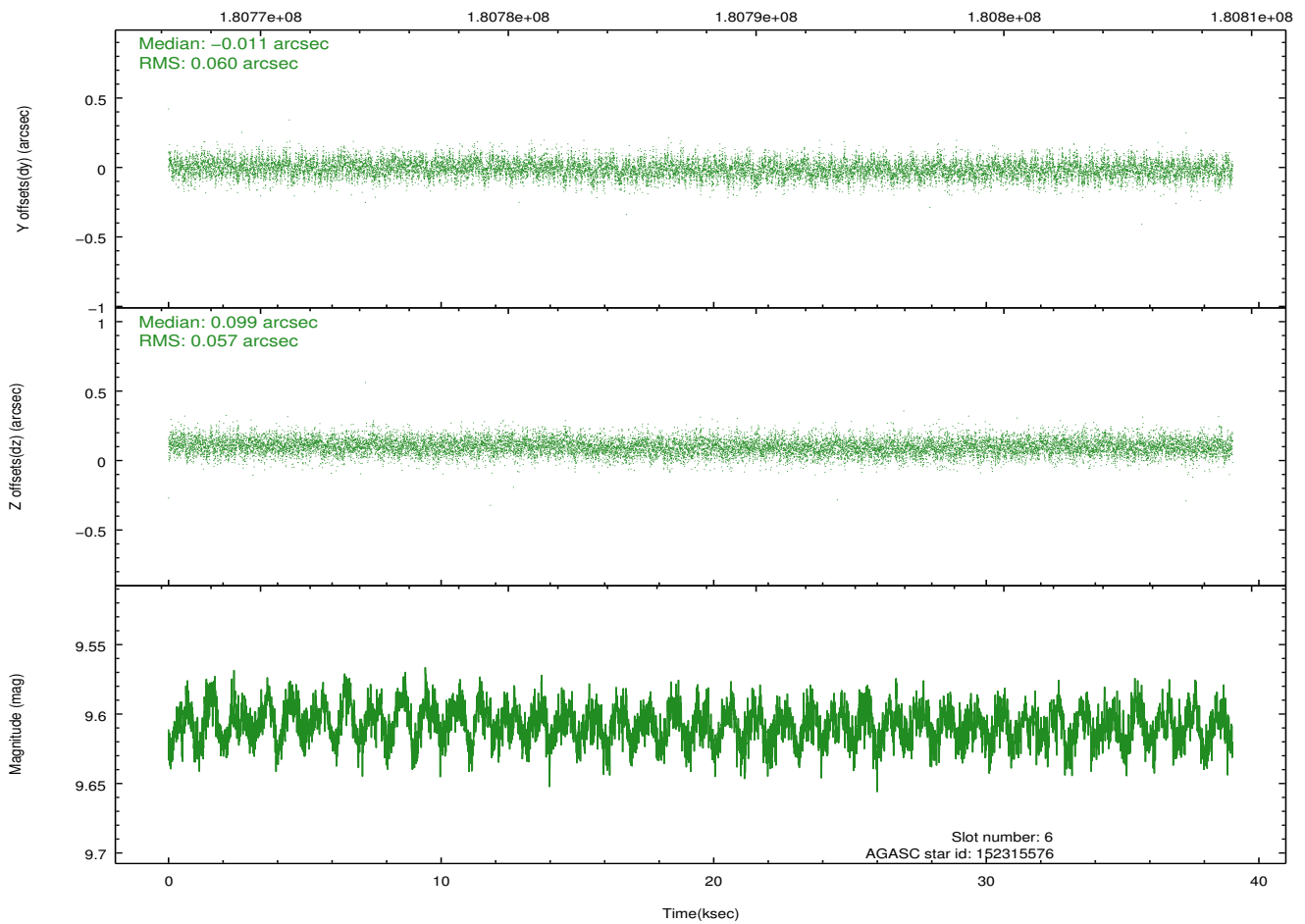
2.4.3 Slot 5



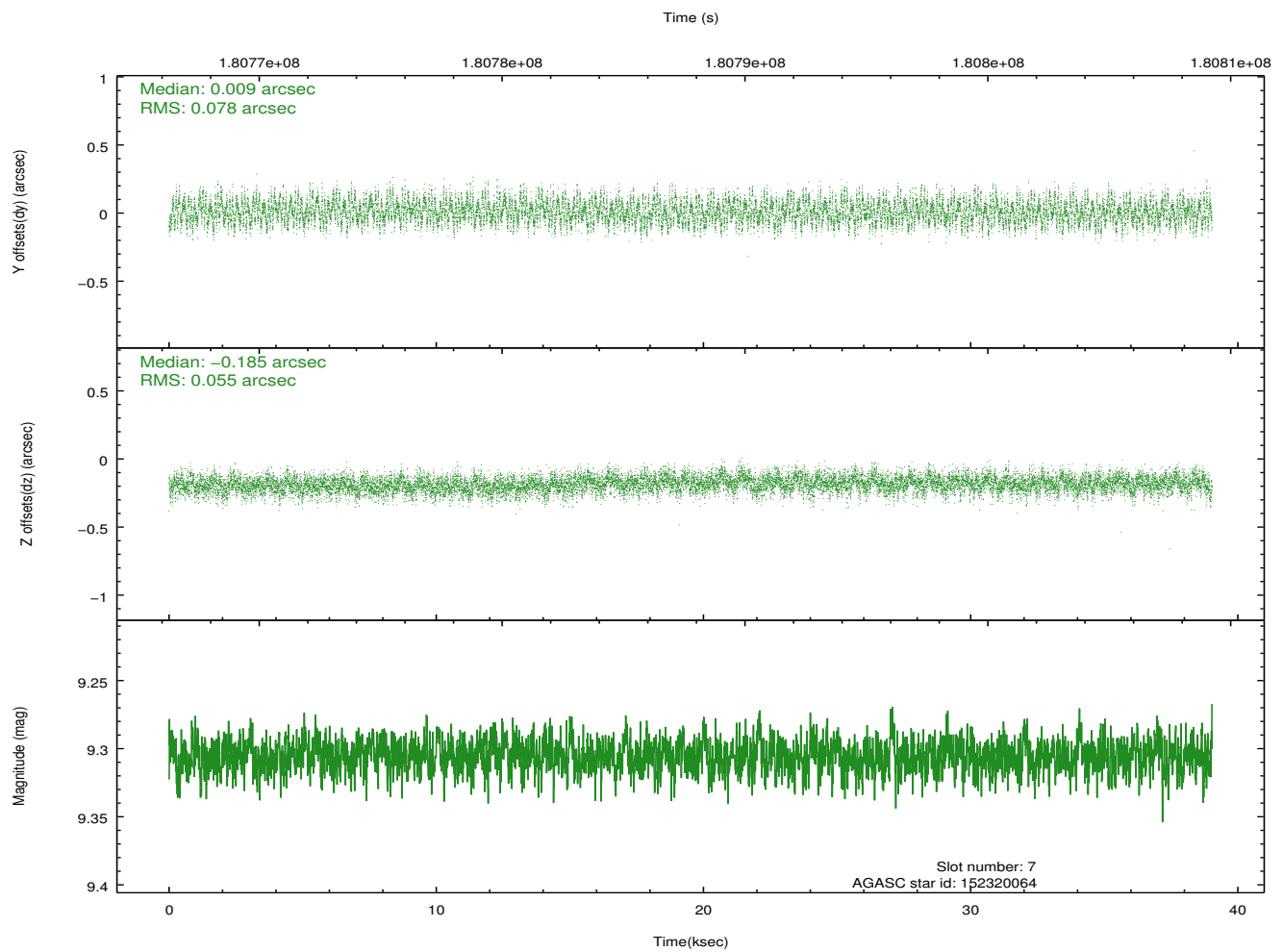
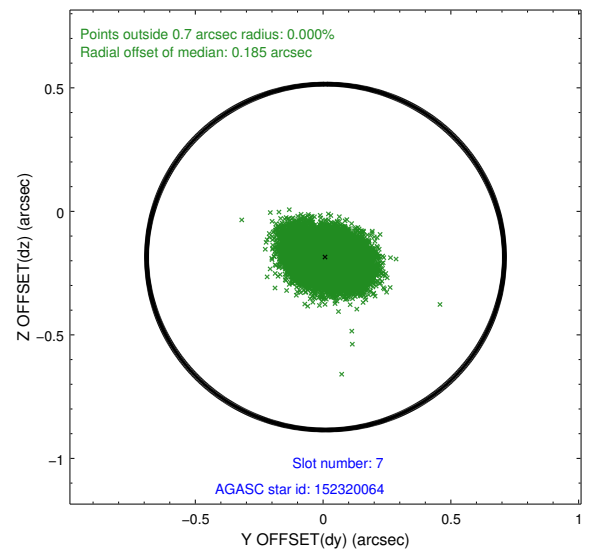
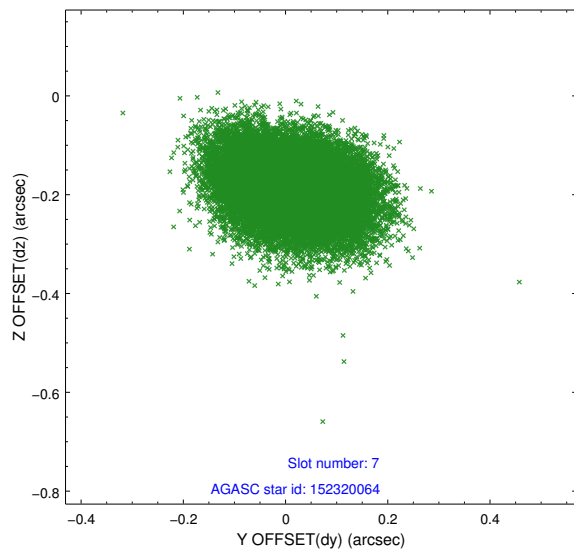
2.4.4 Slot 6



Time (s)

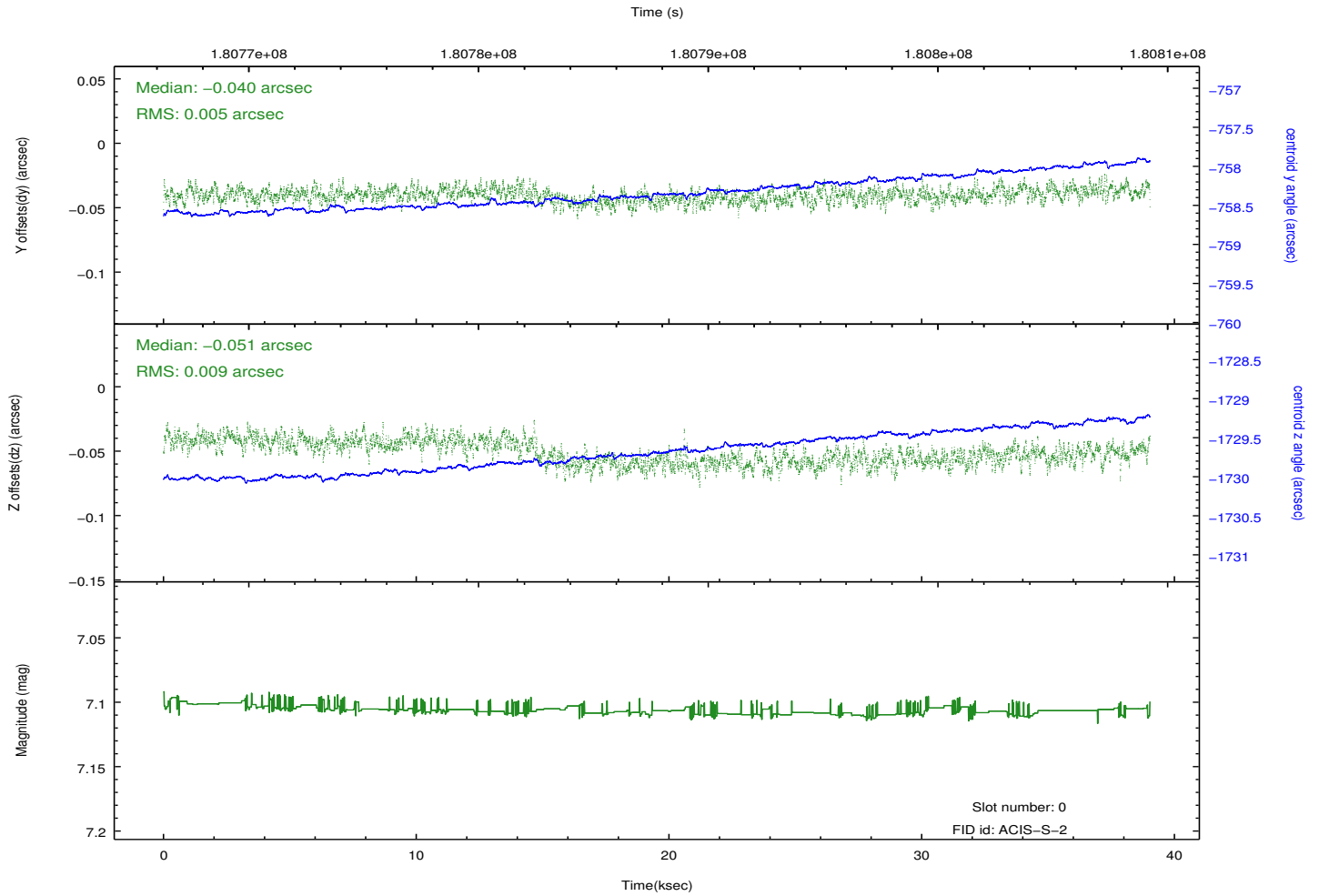
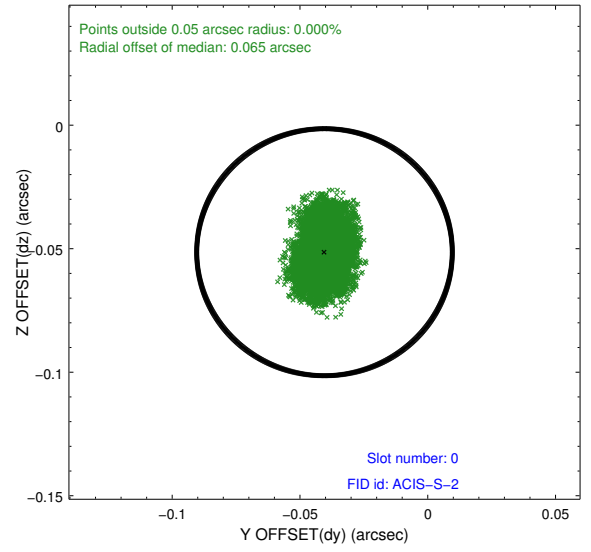
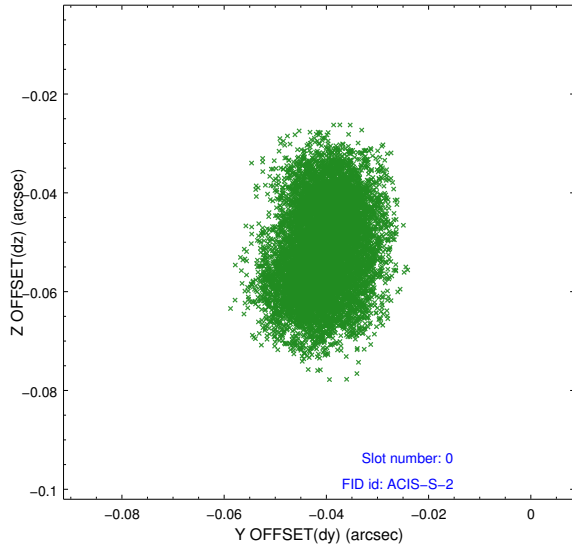


2.4.5 Slot 7

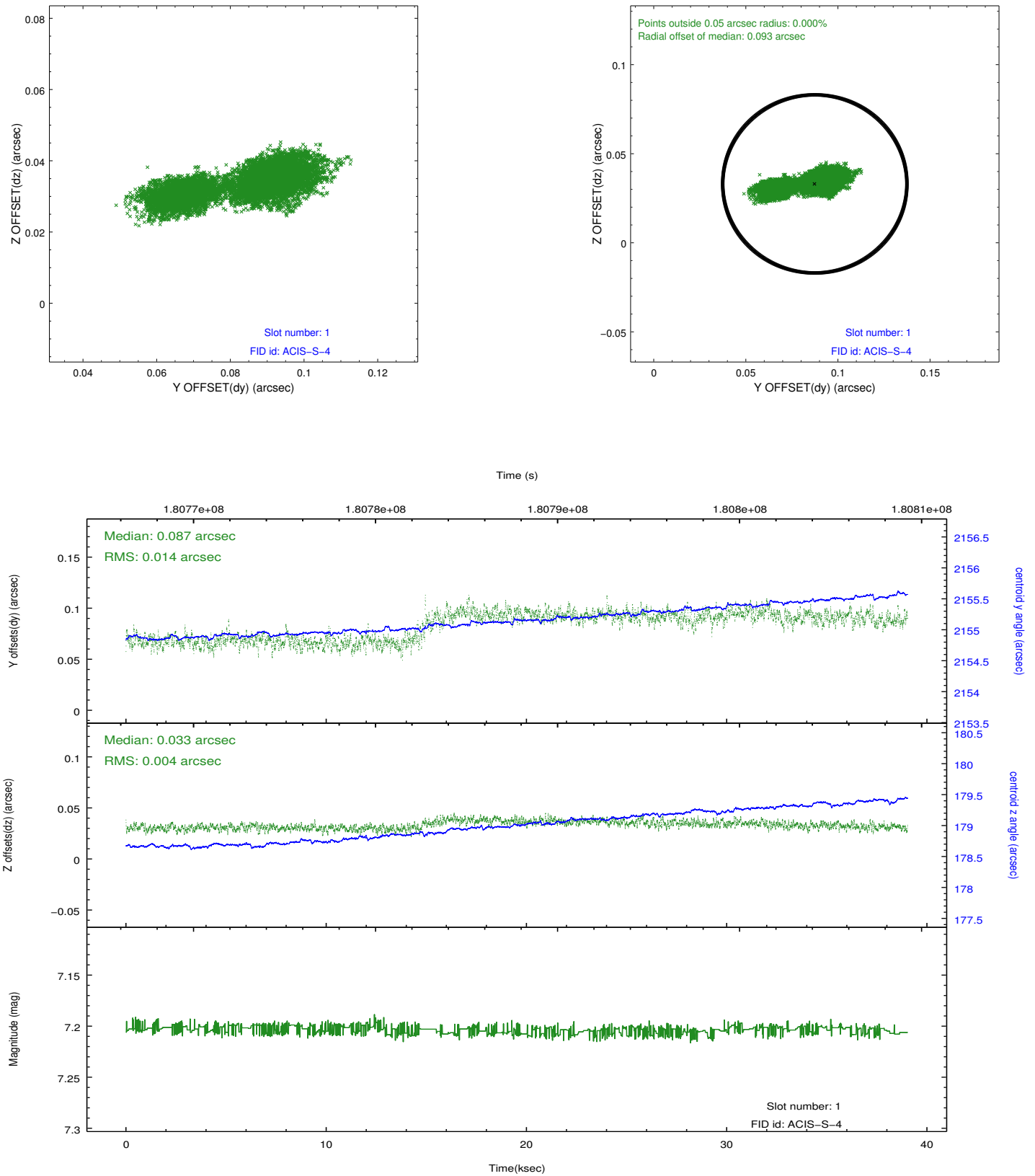


2.5 FID Slots

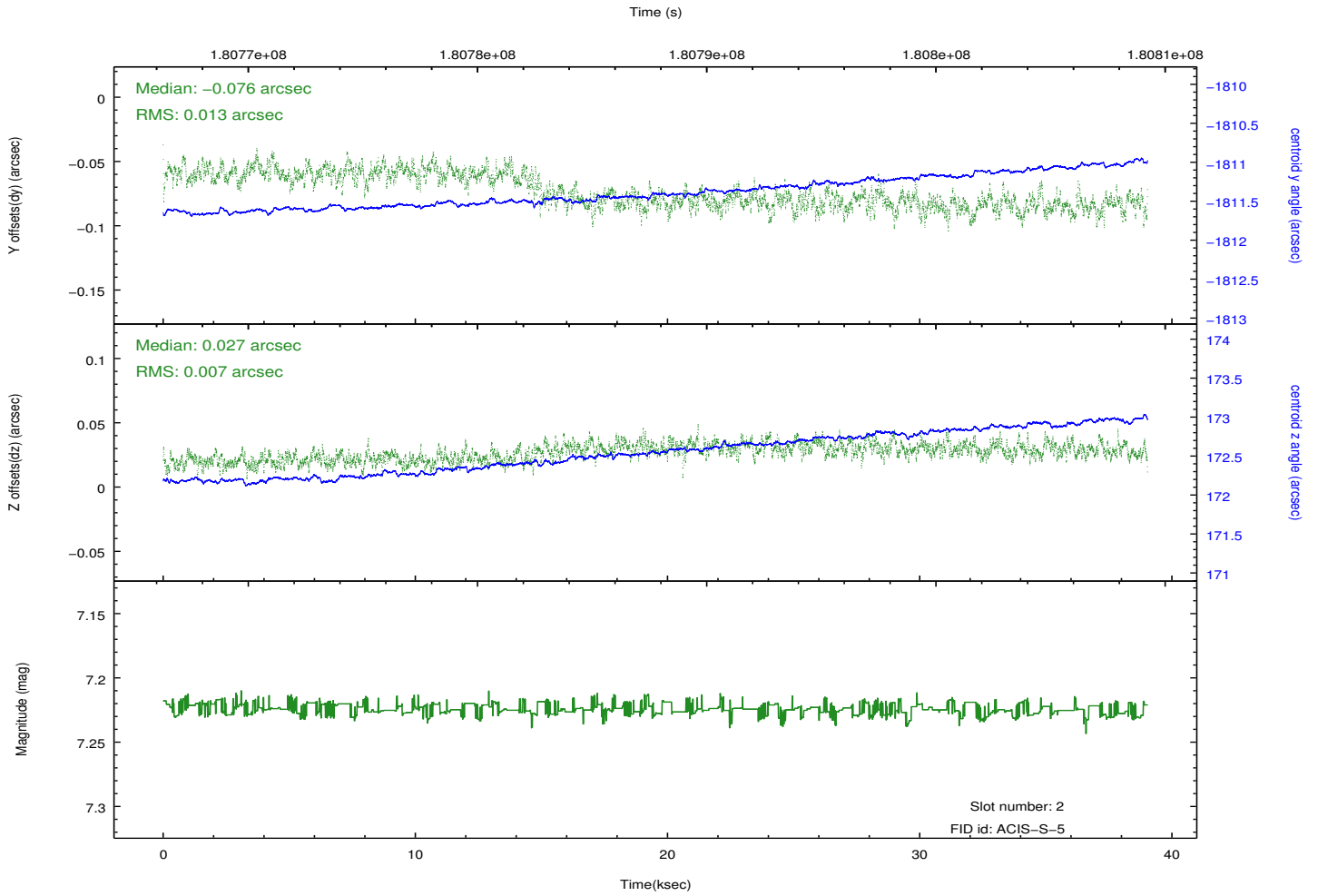
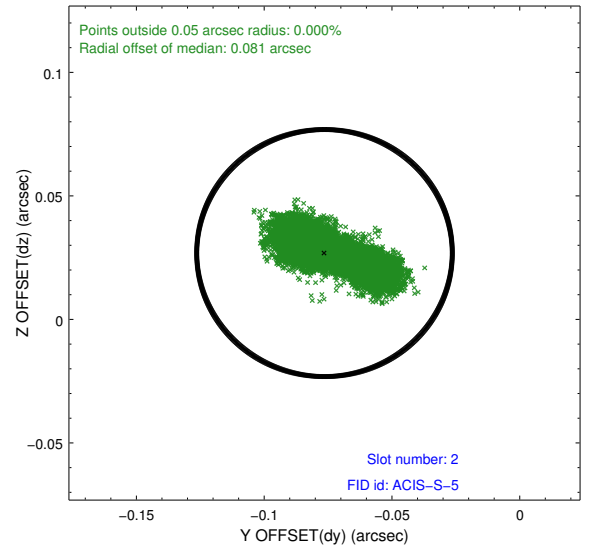
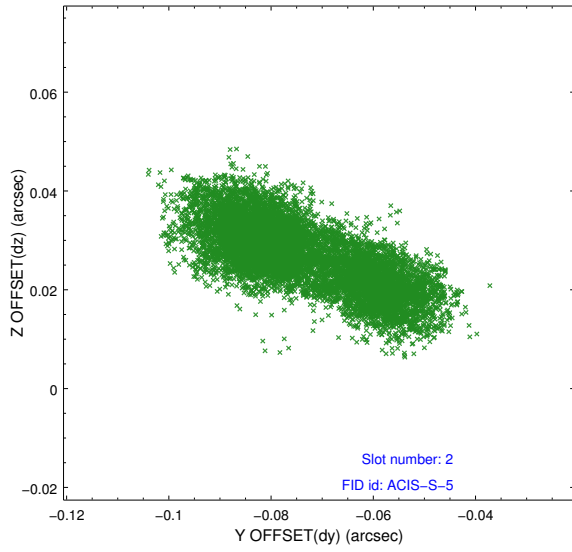
2.5.1 Slot 0



2.5.2 Slot 1



2.5.3 Slot 2



A Summary

A.1 Status

V&V Scientist	Beth Sundheim
V&V Date (YYYY-MM-DD)	2012.11.26
V&V Edition	1
V&V Disposition and Status	OK
V&V Charge Time	37.955

A.2 Comments

Roll preference met.