

V&V Reference Report

L2 ASCDS Version : 8.4.5

Observation 4355 - L2 Version 3
Chandra X-Ray Center

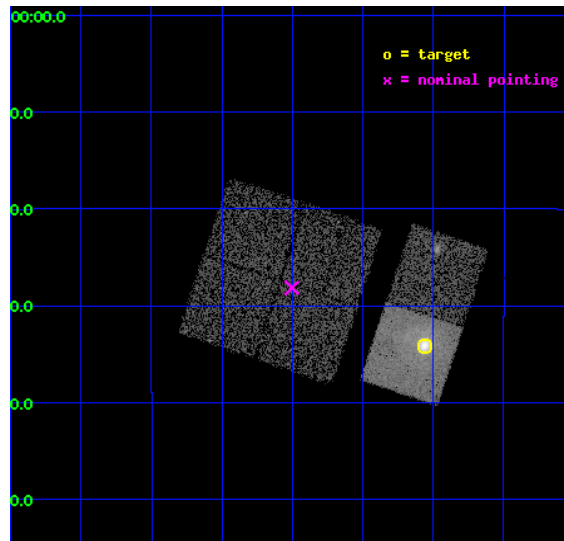
L2 Processing Date : Oct 28 2012

Contents

1	Front	2
2	OBI	3
2.1	OBI	3
2.1.1	Images	3
2.1.2	Bias	3
2.1.3	Parameters	4
2.1.4	Events	4
2.2	Compared Parameters	5
2.3	Aspect	6
2.4	Star Slots	9
2.4.1	Slot 3	9
2.4.2	Slot 4	10
2.4.3	Slot 5	11
2.4.4	Slot 6	12
2.4.5	Slot 7	13
2.5	FID Slots	14
2.5.1	Slot 0	14
2.5.2	Slot 1	15
2.5.3	Slot 2	16
A	Summary	17
A.1	Status	17
A.2	Comments	17

1 Front

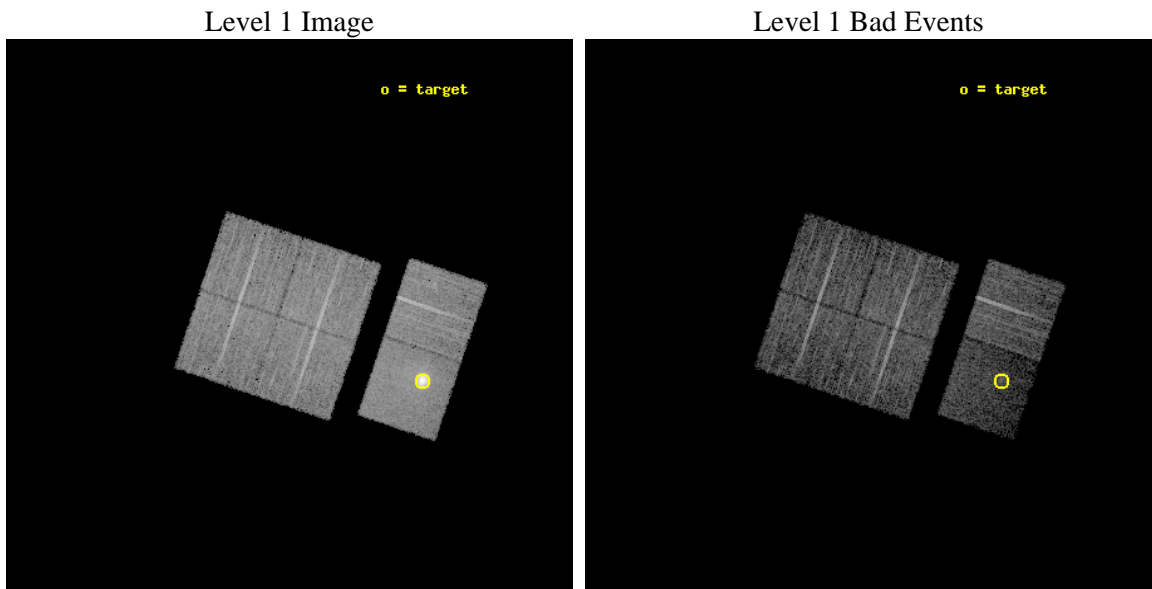
seq_num	590320	Sequence number
obs_id	4355	Observation id
title	AO4 CALIBRATION OBSERVATIONS TO MEASURE THE MIRROR VIGNETTING	Prop
observer	Dr. CXC Calibration	Principal investigator
object	G21.5-0.9[Chip S3, T=120, Offsets=-1,15,-2]	Source name
dtcycle	0	
cycle	P	events from which exps? Prim/Second/Both
ra_targ	278.389583	Observer's specified target RA [deg]
dec_targ	-10.568528	Observer's specified target Dec [deg]
ra_nom	278.62587272427	Nominal RA [deg]
dec_nom	-10.469258746034	Nominal Dec [deg]
roll_nom	108.61512509031	Nominal Roll [deg]
revision	3	Processing version of data
ontime	9558.3999643922	Sum of GTIs [s]
livetime	9437.3657486656	Livetime [s]
ontime0	9551.917983979	Sum of GTIs [s]
ontime1	9558.3999643922	Sum of GTIs [s]
ontime2	9558.3999643922	Sum of GTIs [s]
ontime3	9558.3999643922	Sum of GTIs [s]
ontime6	9558.3999643922	Sum of GTIs [s]
ontime7	9558.3999643922	Sum of GTIs [s]
l2events	67956	Number of level 2 events



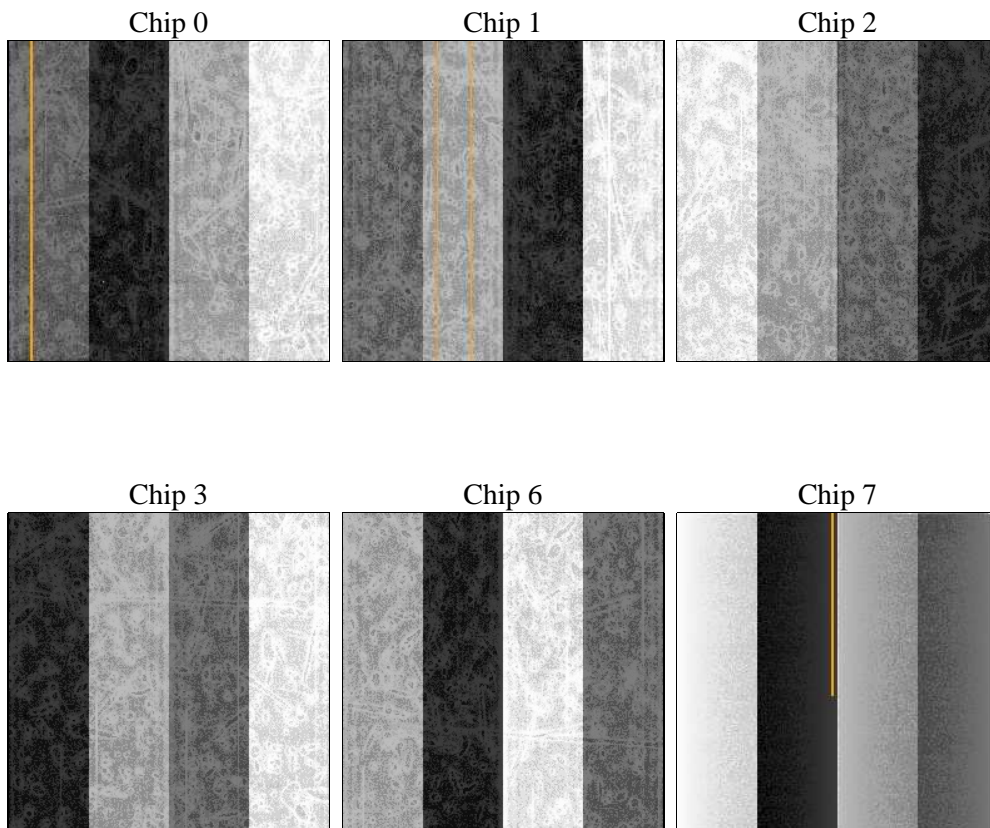
2 OBI

2.1 OBI

2.1.1 Images



2.1.2 Bias



2.1.3 Parameters

obi_num	0	Obi number	sched_exp_time	9806.000000	[s] Scheduled observation exposure time
ascdsver	8.4.5	Processing system revision	ontime	9558.3999643922	Sum of GTIs [s]
caldbver	4.5.2	 	ontime0	9551.917983979	Sum of GTIs [s]
date	2012-10-28T13:31:55	Date and time of file creation	ontime1	9558.3999643922	Sum of GTIs [s]
revision	3	Processing version of data	ontime2	9558.3999643922	Sum of GTIs [s]
			ontime3	9558.3999643922	Sum of GTIs [s]
			ontime6	9558.3999643922	Sum of GTIs [s]
			ontime7	9558.3999643922	Sum of GTIs [s]
			l1events	309043	Number of level 1 events

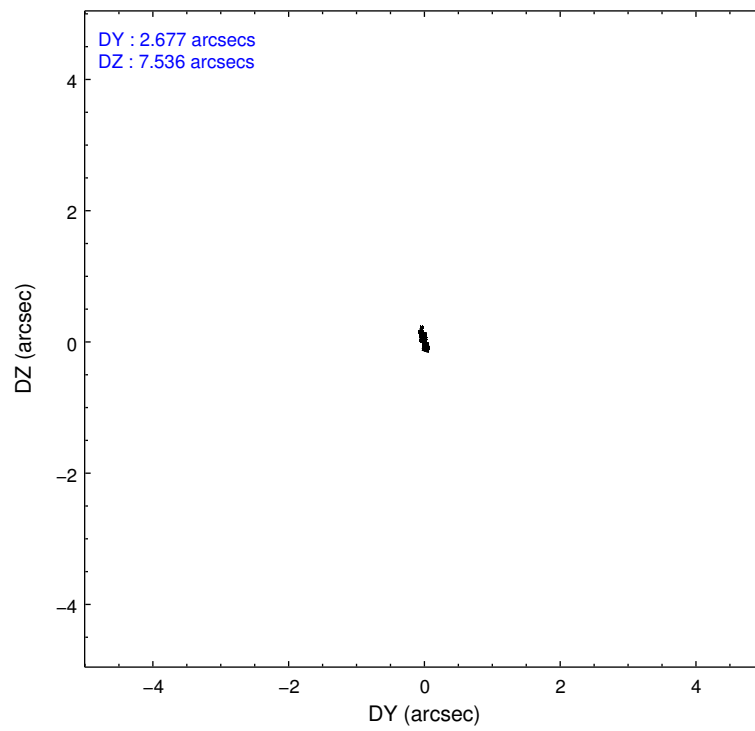
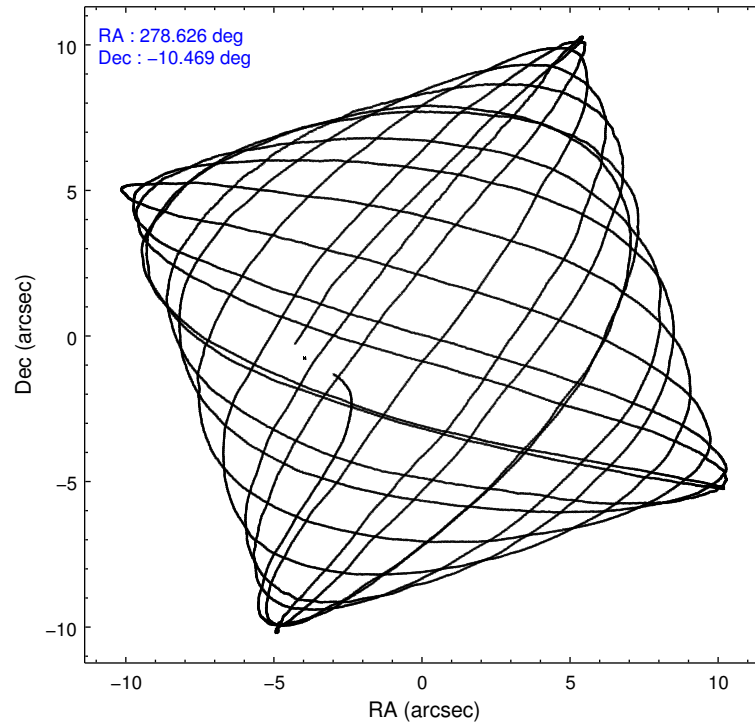
2.1.4 Events

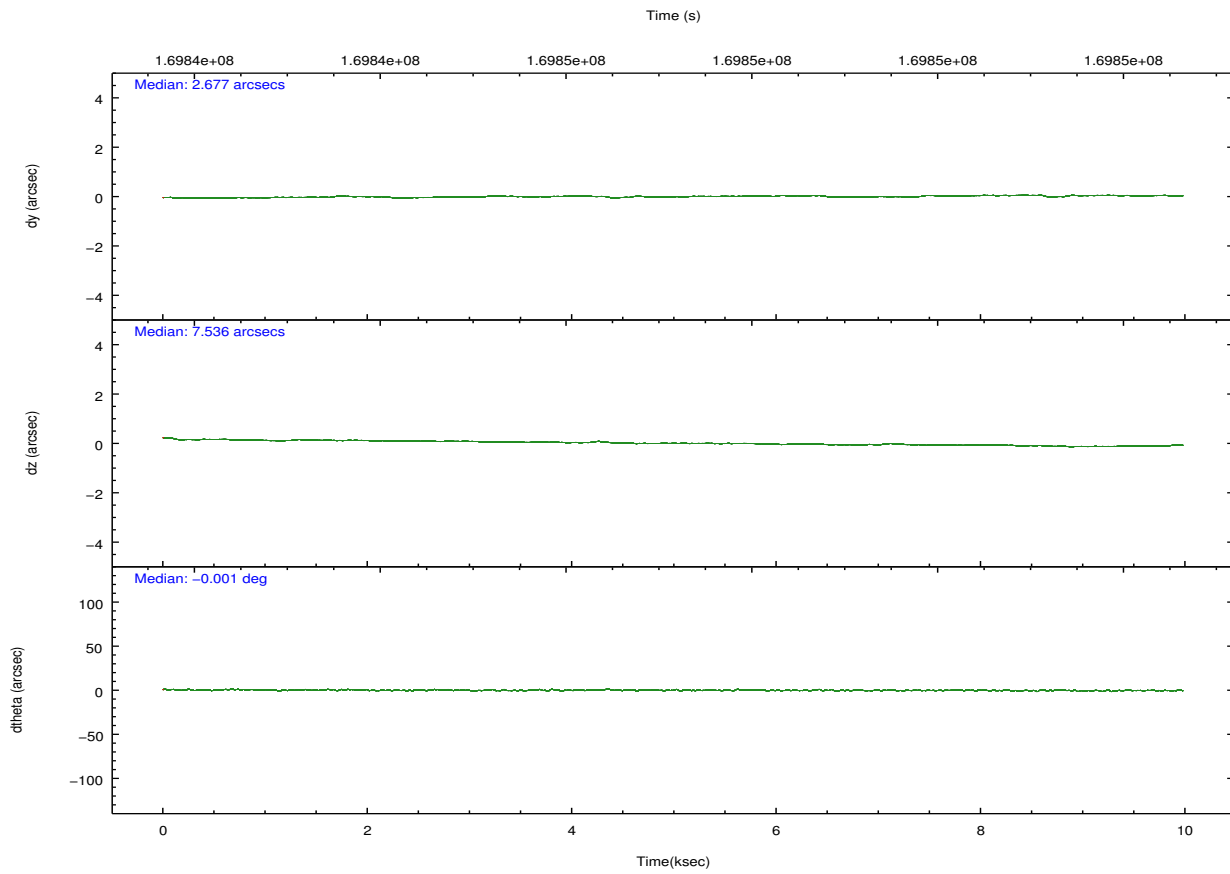
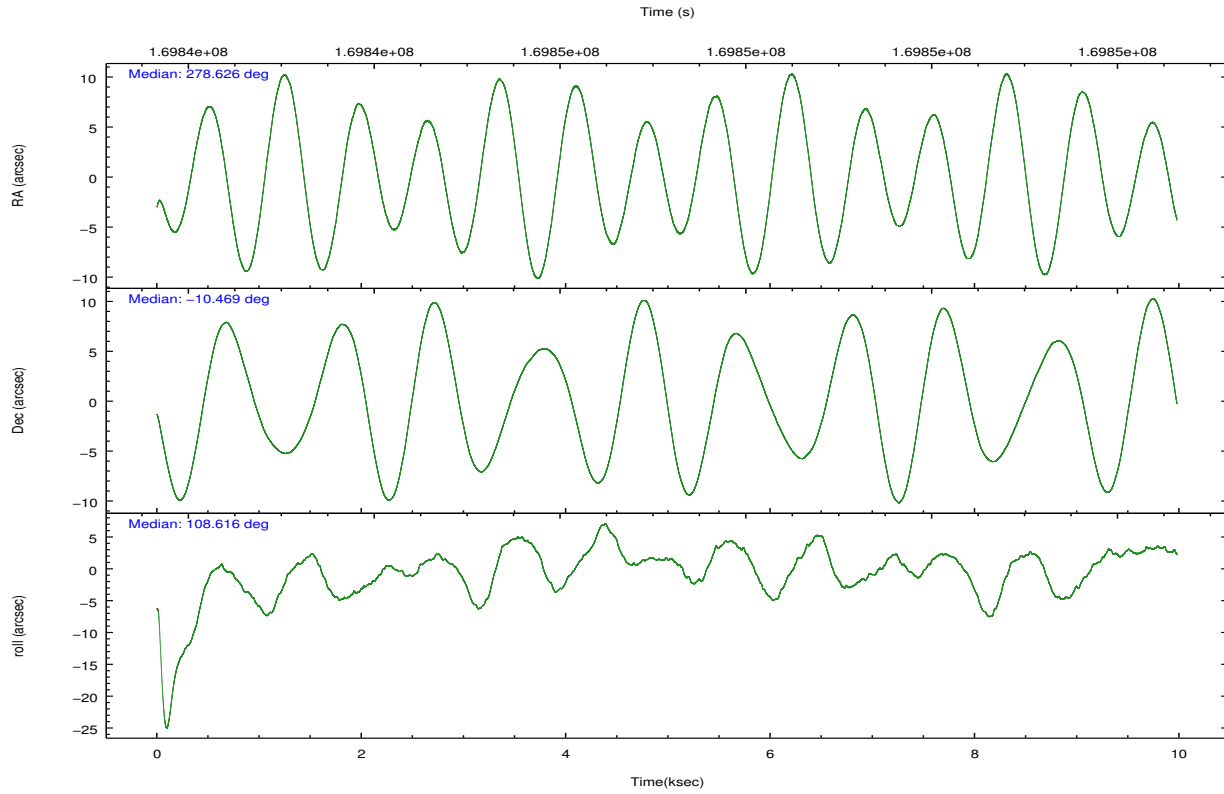
	ccd 0	ccd 1	ccd 2	ccd 3	ccd 6	ccd 7		ccd 0	ccd 1	ccd 2	ccd 3	ccd 6	ccd 7
level 1 events	45240	44304	51795	47103	50023	70578	grade 0 events	1805	1872	2072	1726	2647	7937
rejected events	40427	39247	46816	42614	44050	22863		3%	4%	4%	3%	5%	11%
rejected %	89%	88%	90%	90%	88%	32%	grade 1 events	22	18	21	26	21	50
								0%	0%	0%	0%	0%	0%
							grade 2 events	1107	1084	1054	919	1210	11100
								2%	2%	2%	1%	2%	15%
							grade 3 events	549	602	547	525	609	5219
								1%	1%	1%	1%	1%	7%
							grade 4 events	513	580	575	540	529	5097
								1%	1%	1%	1%	1%	7%
							grade 5 events	1355	1507	1290	1556	1617	5045
								2%	3%	2%	3%	3%	7%
							grade 6 events	846	919	733	781	978	18404
								1%	2%	1%	1%	1%	26%
							grade 7 events	39043	37722	45503	41030	42412	17726
								86%	85%	87%	87%	84%	25%

2.2 Compared Parameters

Parameter	Planned	Actual	Parameter	Planned	Actual
Instrument	ACIS	ACIS	Obspar format version number	7	7
Detector	ACIS-012367	ACIS-012367	Obspar file type	PREDICTED	ACTUAL
Grating	NONE	NONE	Obspar update status	NONE	UPDATED
Data mode	VFAINT	VFAINT	Number of optional ACIS chips dropped	0	0
Observation mode	POINTING	POINTING	On-chip summing requested	N	N
[deg] Pointing RA	278.646859	278.6258727242656	Subarray requested	NONE	NONE
[deg] Pointing Dec	-10.487258	-10.46925874603433	Alternating exposures requested	N	N
[deg] Pointing Roll	108.410237	108.6151250903086	[s] Primary exposure time	0.000000	3.2
[s] Window start time (MET)	168134464.184000	168134464.184000			
[s] Window stop time (MET)	173318464.184000	173318464.184000			
[mm] SIM focus pos	-0.782348	-0.7809083437167272			
[mm] SIM defocus	0	0.001439871863259334			
[mm] SIM translation stage pos	-231.230463	-231.2340353385685			
[mm] SIM translation stage offset	-2.362	-2.358417664361156			
[s] Observation start time (MET)	169842335.184000	169841966.6506			
Observation start date	2003-05-20T18:24:31	2003-05-20T18:19:26			
[s] Observation end time (MET)	169852141.184000	169853066.37607			
Observation end date	2003-05-20T21:07:57	2003-05-20T21:24:26			
Read mode	TIMED	TIMED			

2.3 Aspect



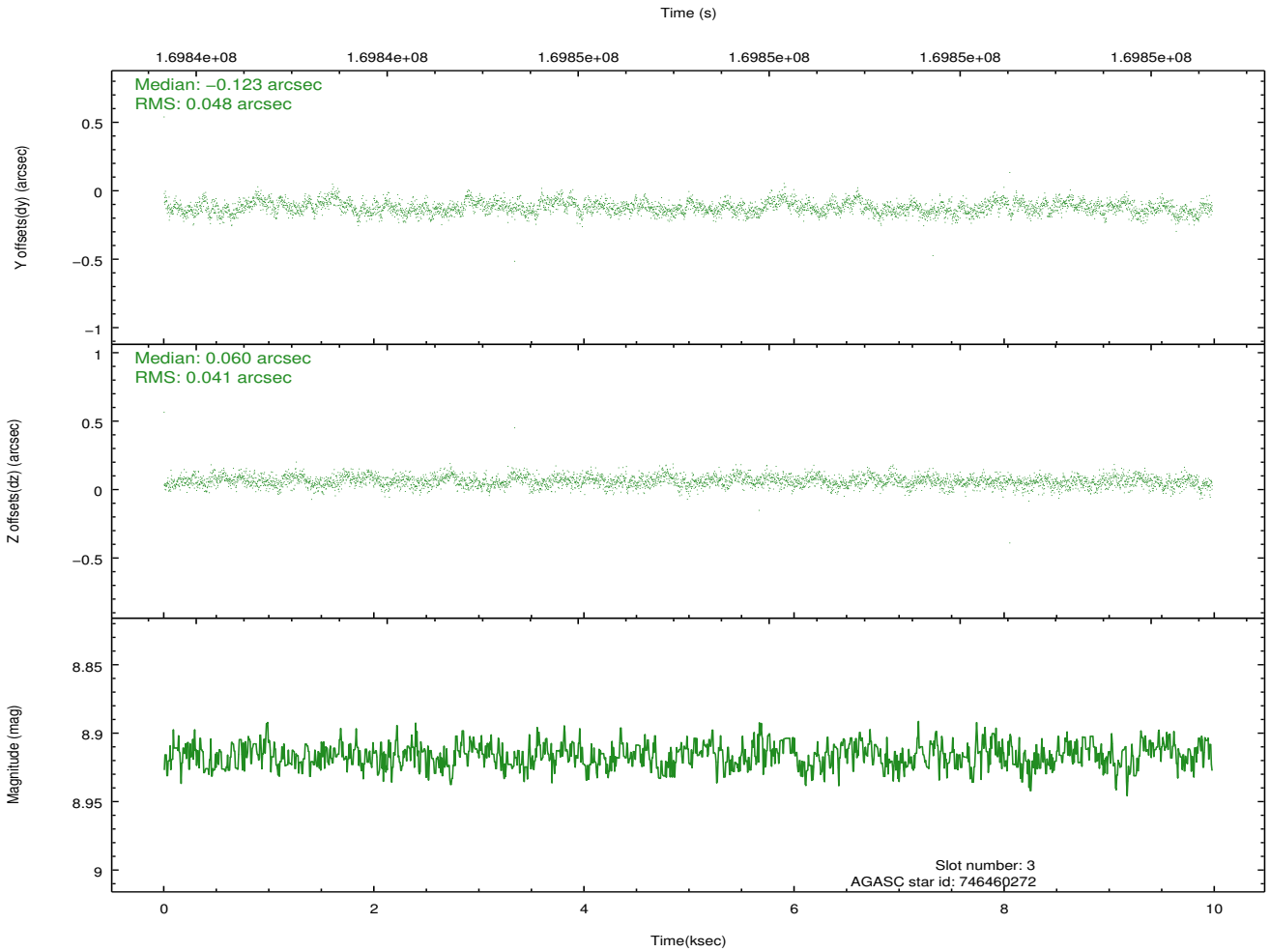
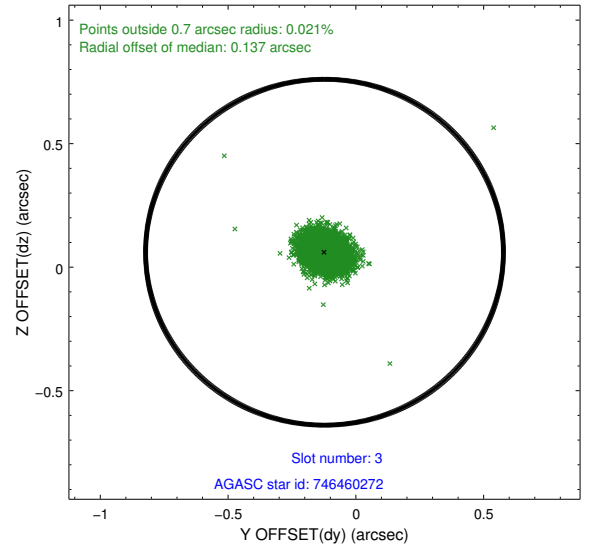
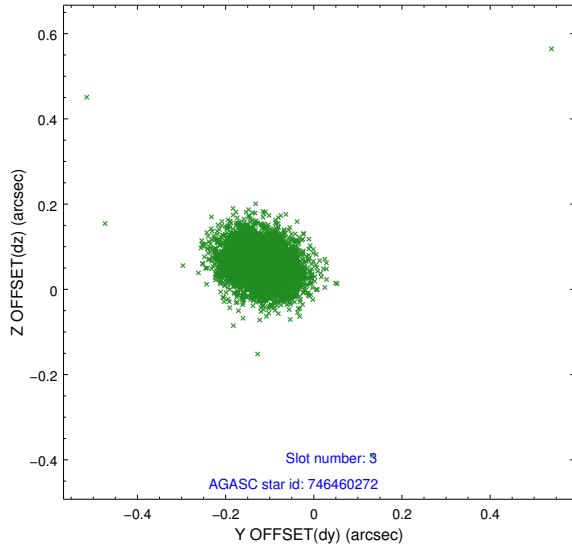


Slot Statistics

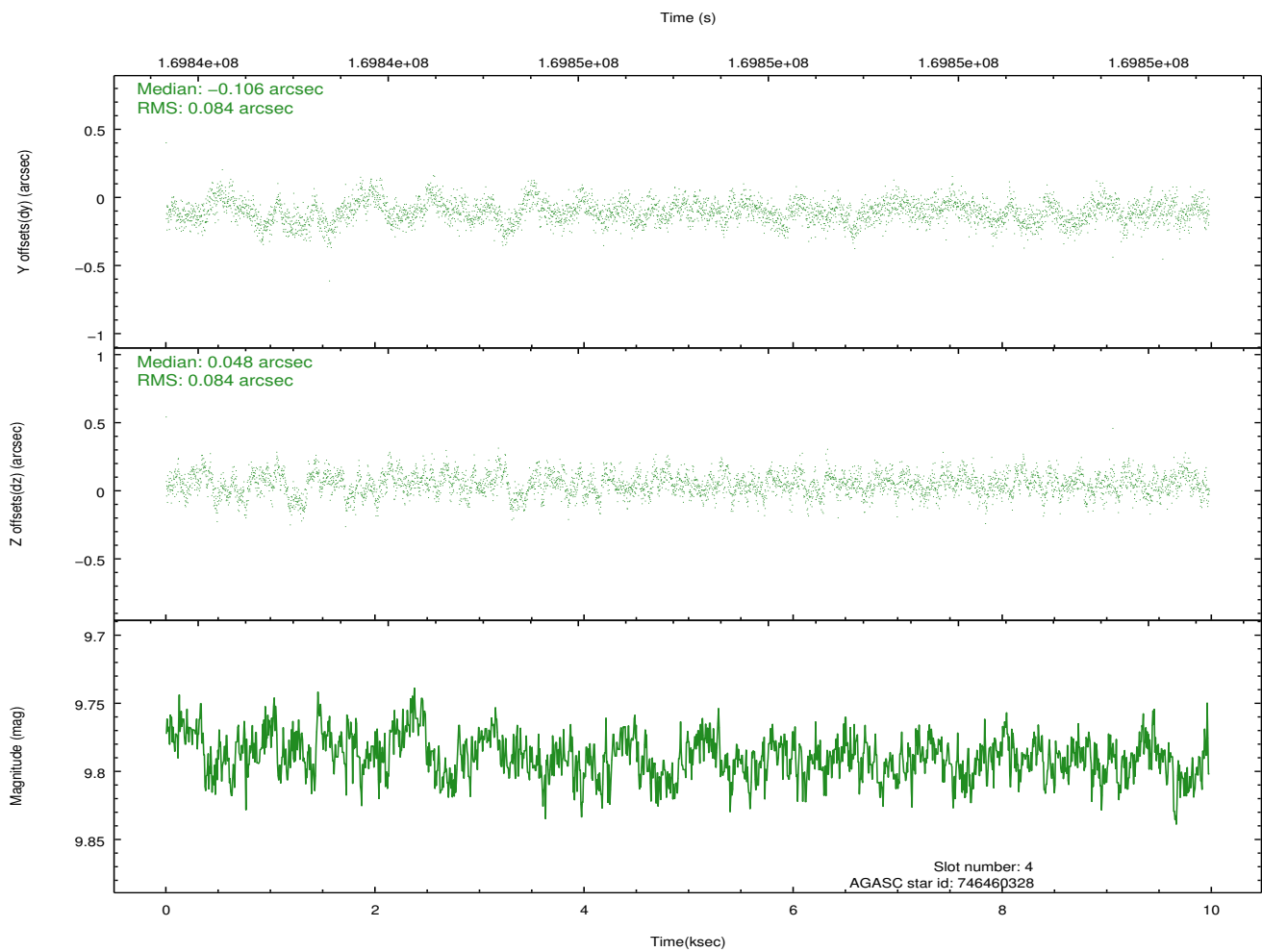
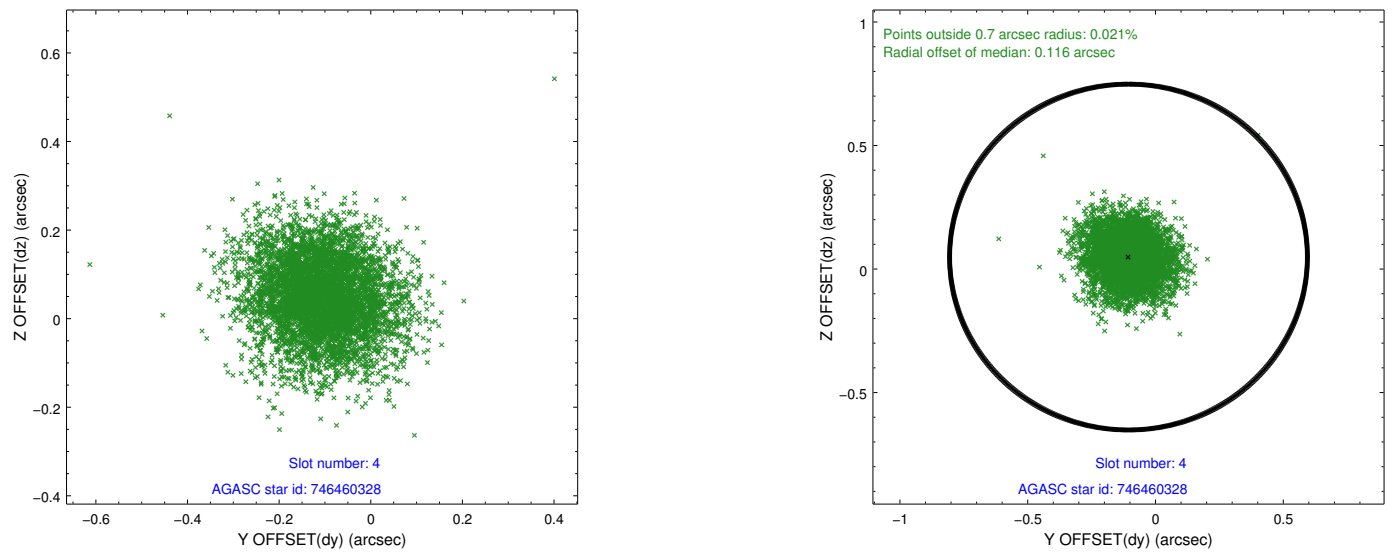
slot	status	id	mag	n_pts	med_dy	med_dz	dr1	dr2	ra	dec	mean_y	mean_z
0	FID	ACIS-I-1	7.25	2434	0.008	-0.008	0.006	0.011	0.000000	0.000000	937.07	-879.33
1	FID	ACIS-I-5	7.23	2433	-0.108	0.039	0.006	0.011	0.000000	0.000000	-1810.82	1017.97
2	FID	ACIS-I-6	7.23	2434	0.009	0.040	0.007	0.012	0.000000	0.000000	402.09	1663.05
3	GUIDE	746460272	8.92	4866	-0.123	0.060	0.065	0.105	278.847488	-10.152127	920.24	-1055.45
4	GUIDE	746460328	9.79	4863	-0.106	0.048	0.125	0.207	278.603974	-9.898096	2060.69	-525.60
5	GUIDE	746462392	8.52	4867	0.110	0.076	0.069	0.112	279.038421	-10.890715	-1815.96	-854.61
6	GUIDE	746462456	8.39	4868	0.063	-0.241	0.064	0.103	278.652171	-10.530173	-152.90	30.63
7	GUIDE	746462896	9.64	4858	0.057	0.056	0.102	0.164	279.425007	-10.726062	-1687.99	-2338.71

2.4 Star Slots

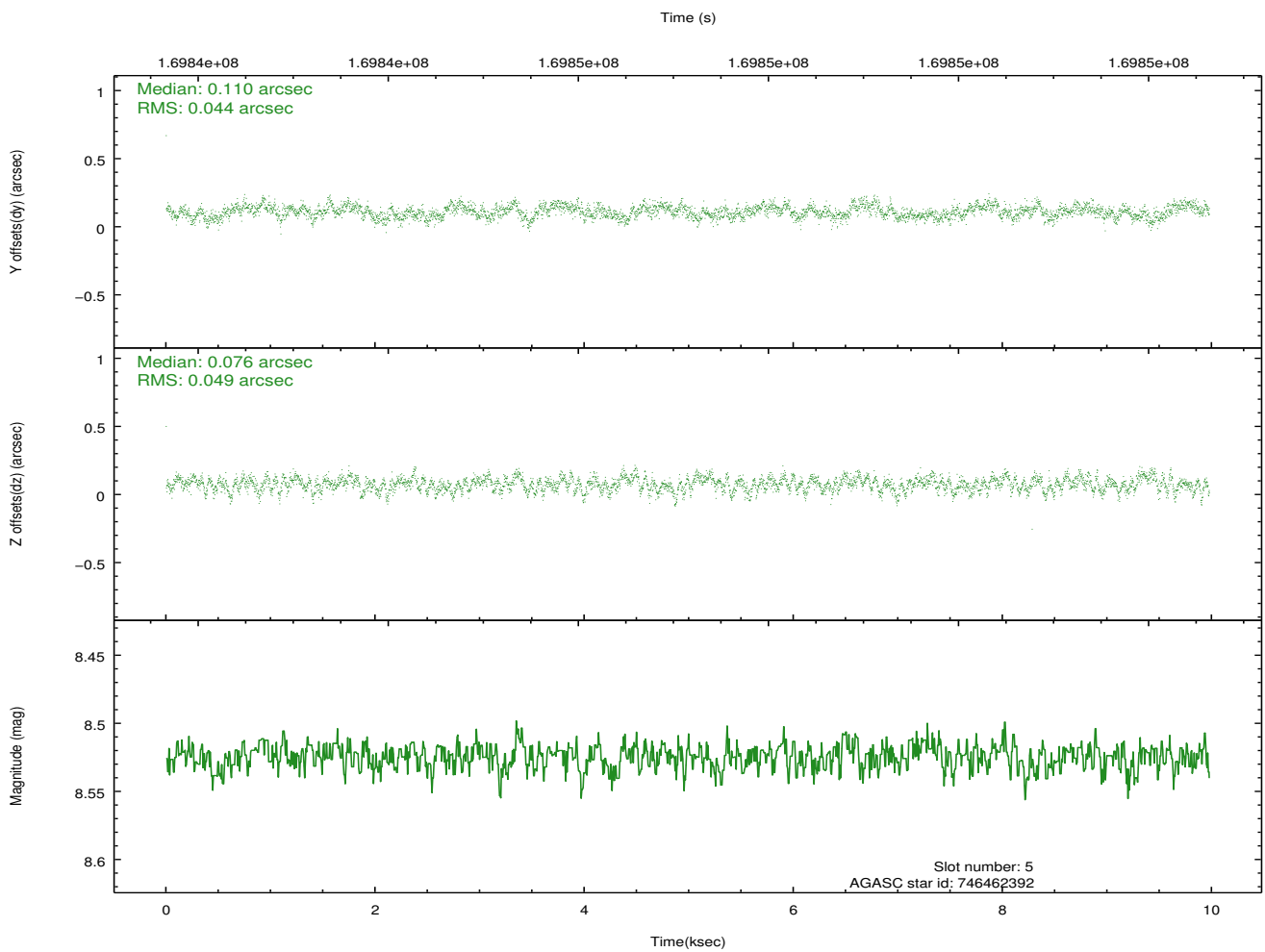
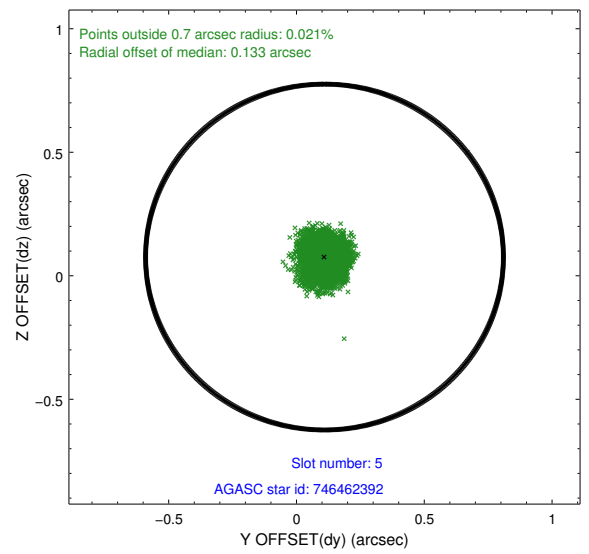
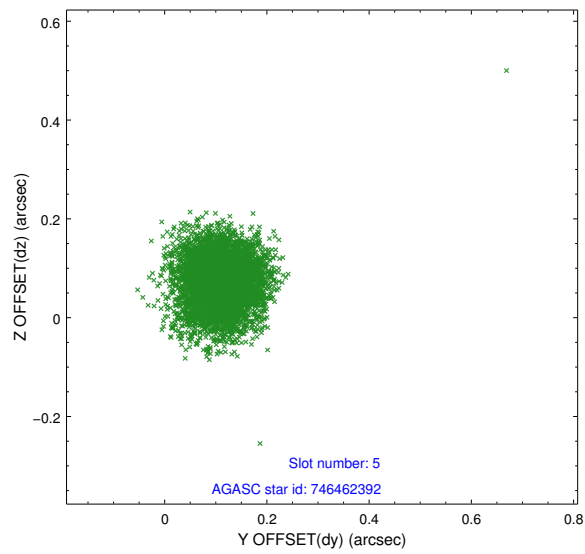
2.4.1 Slot 3



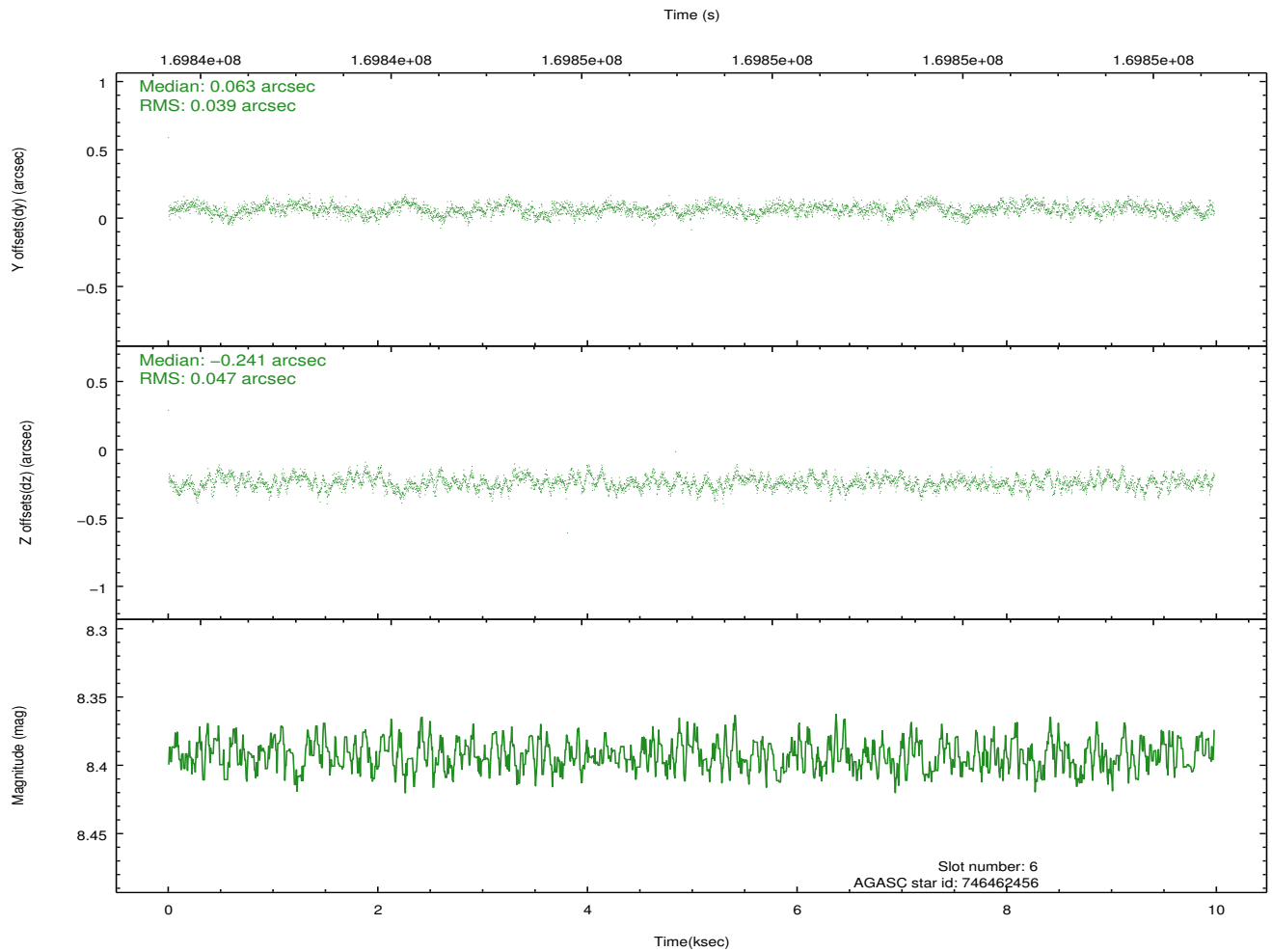
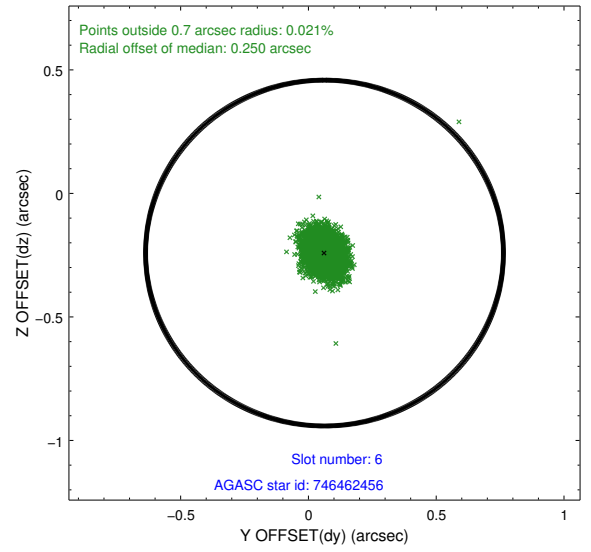
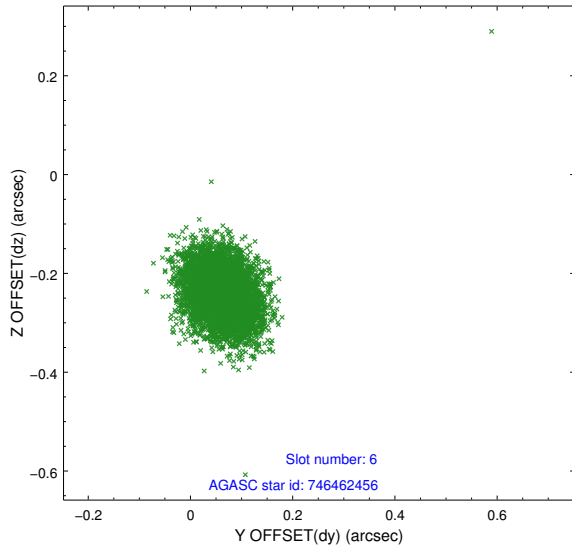
2.4.2 Slot 4



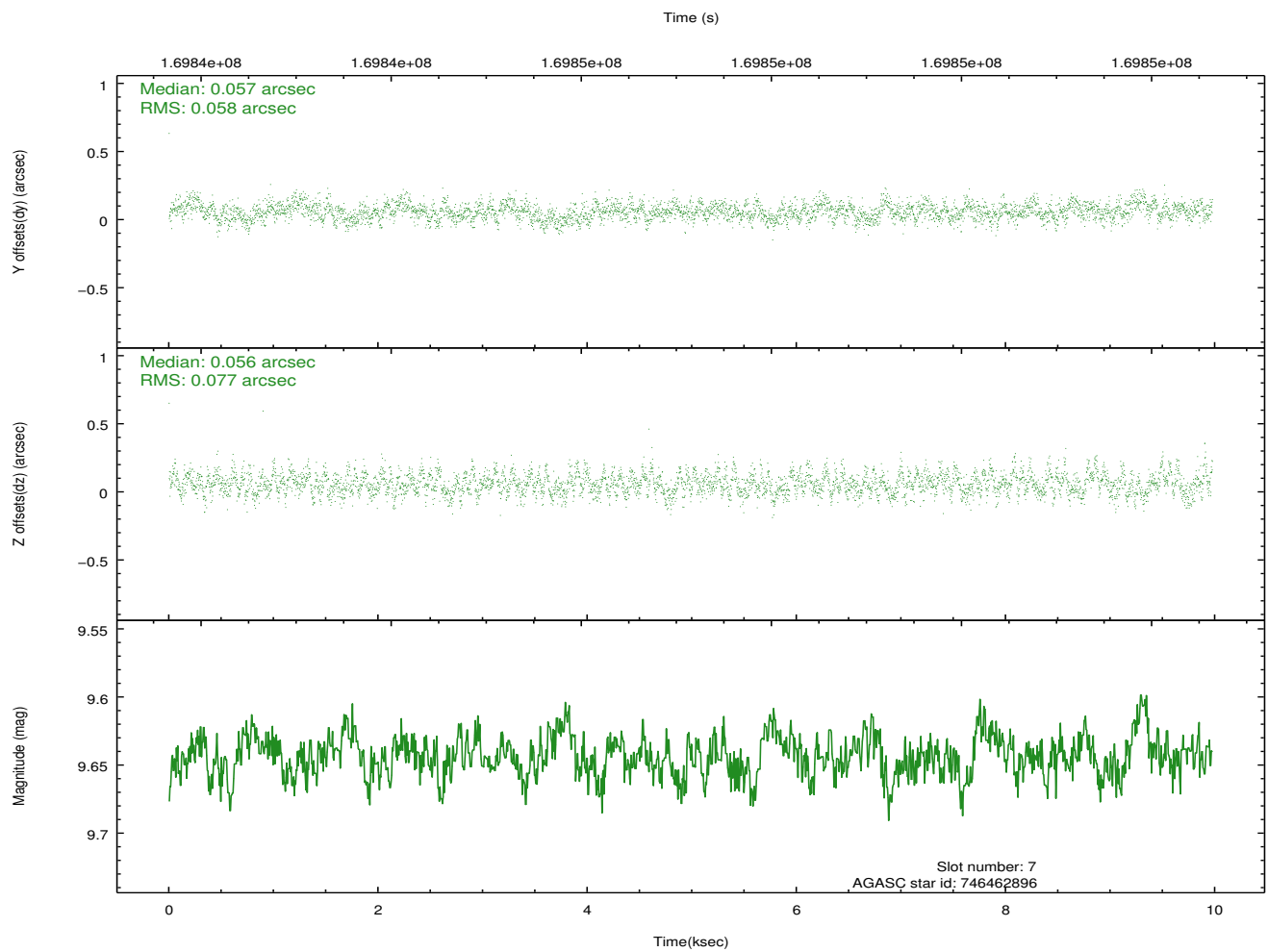
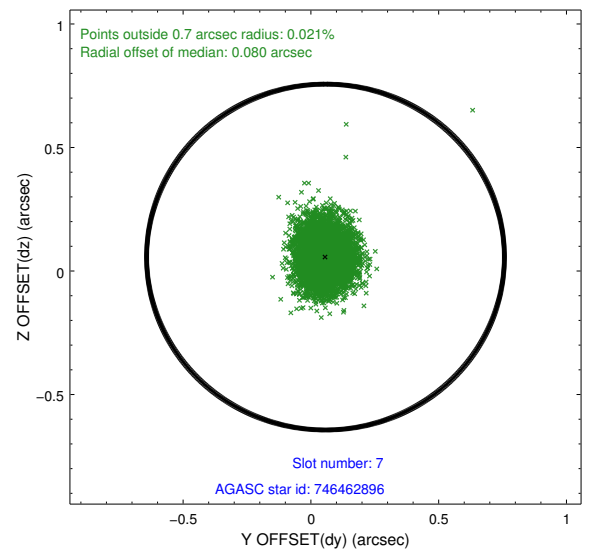
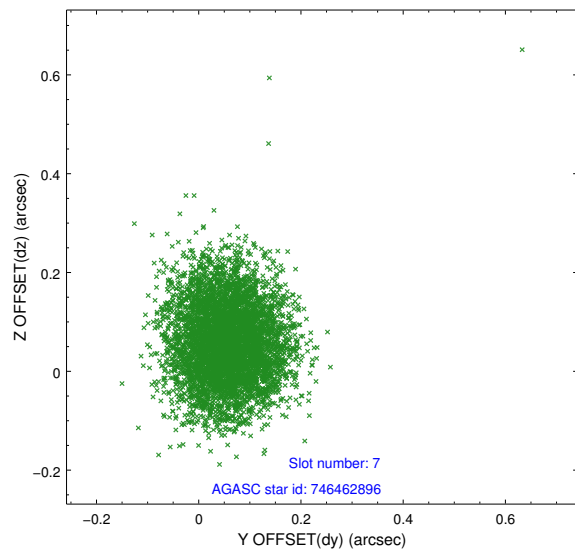
2.4.3 Slot 5



2.4.4 Slot 6

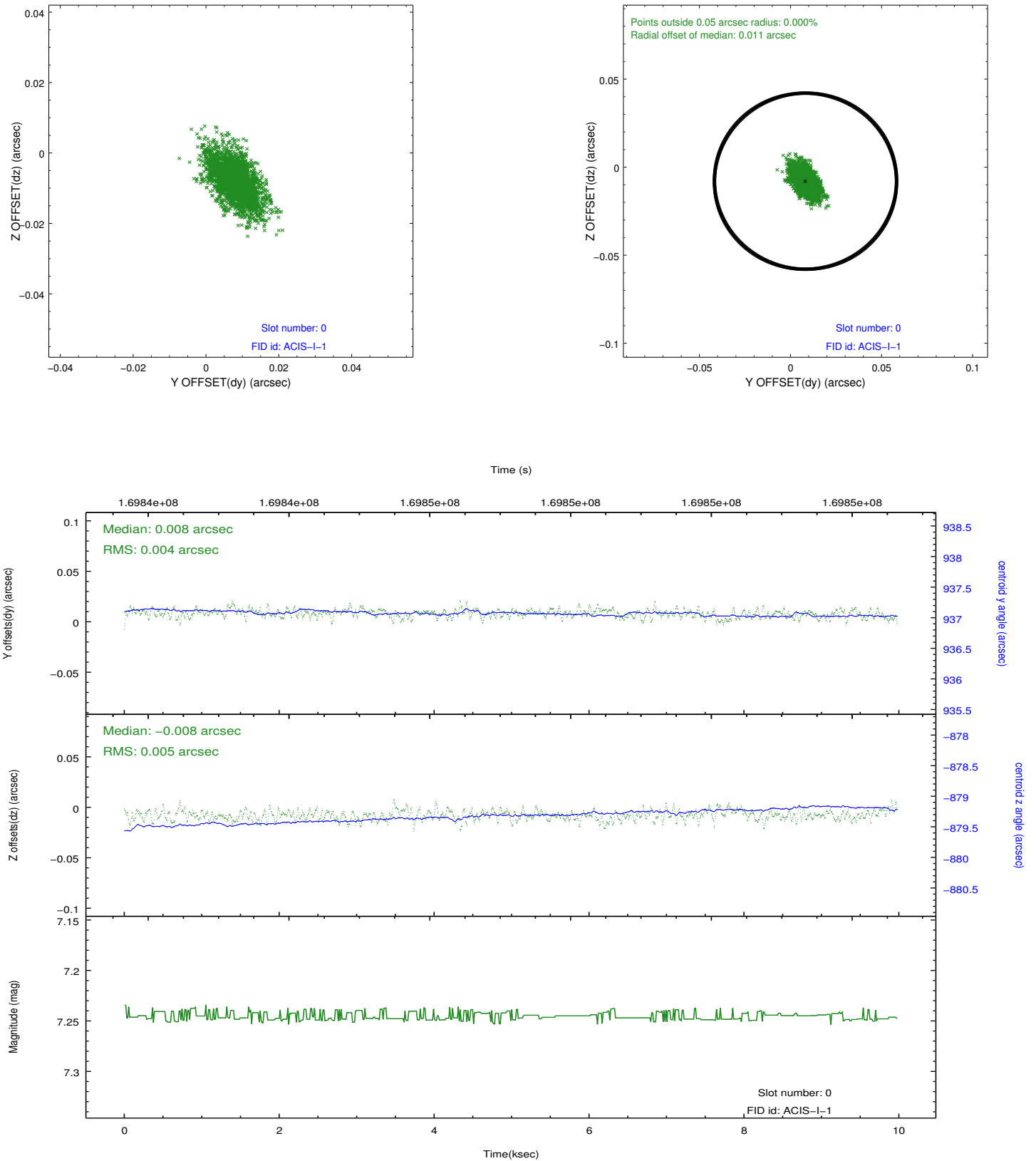


2.4.5 Slot 7

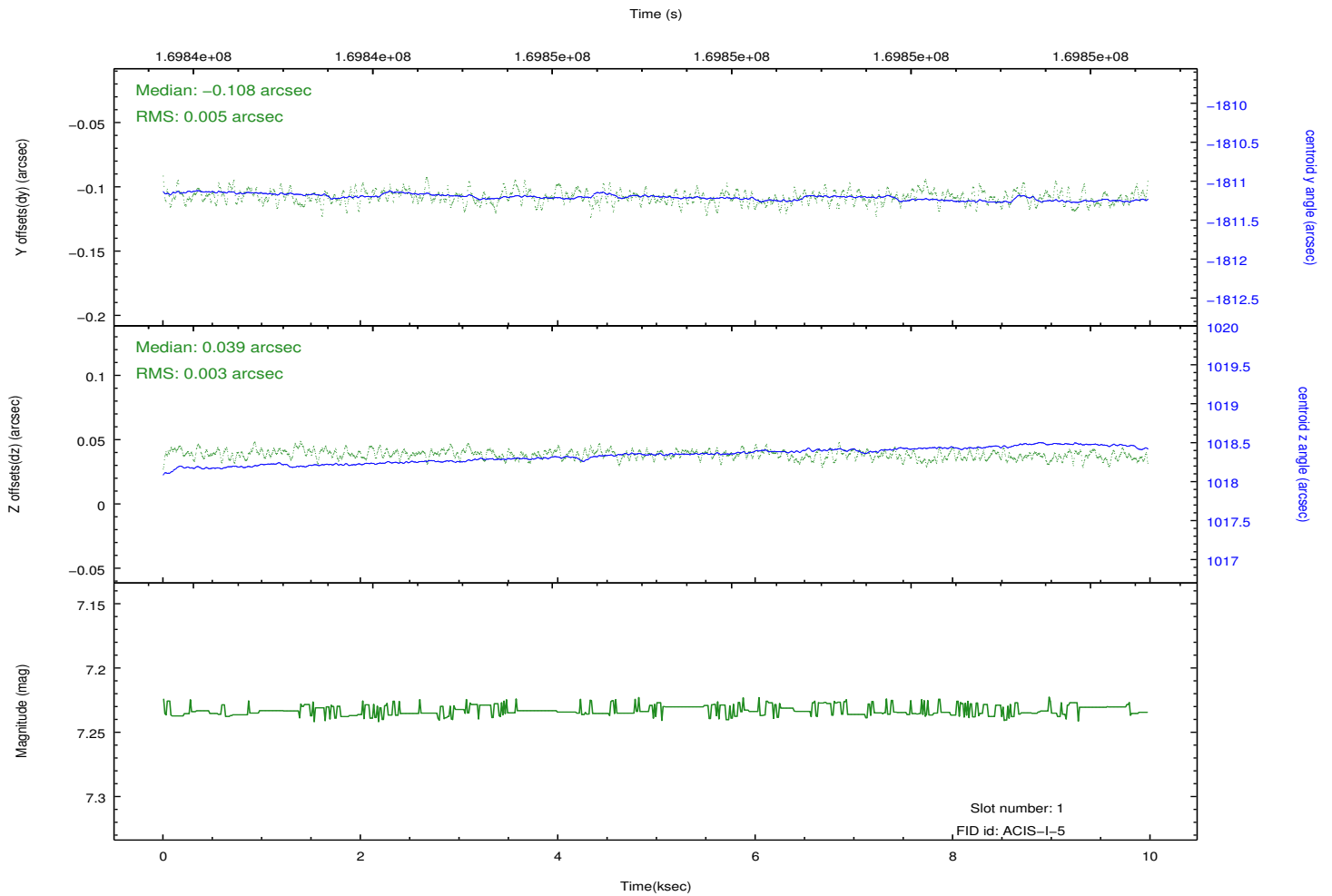
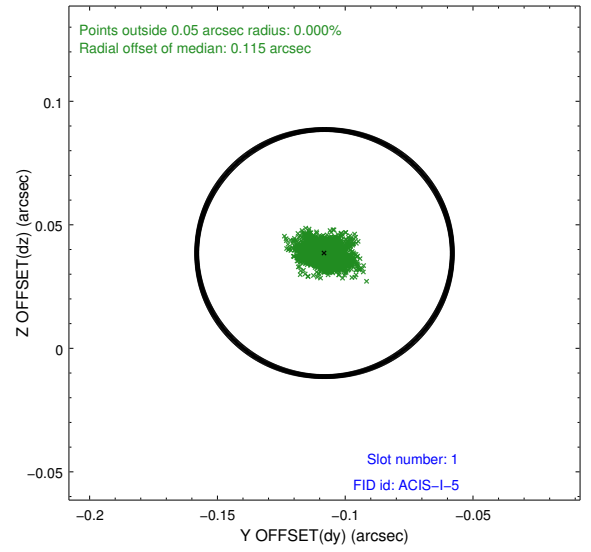
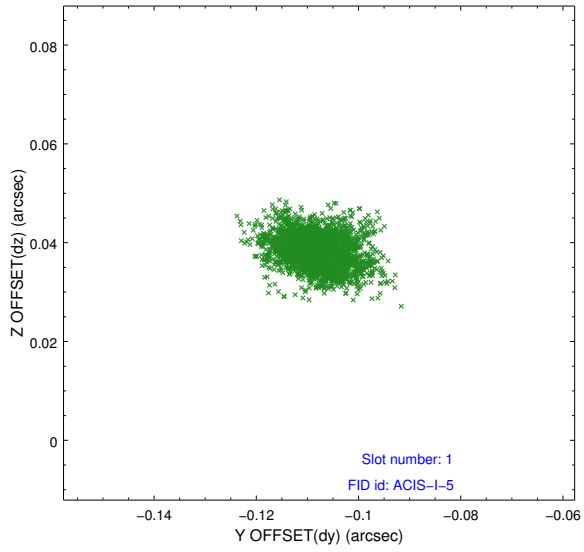


2.5 FID Slots

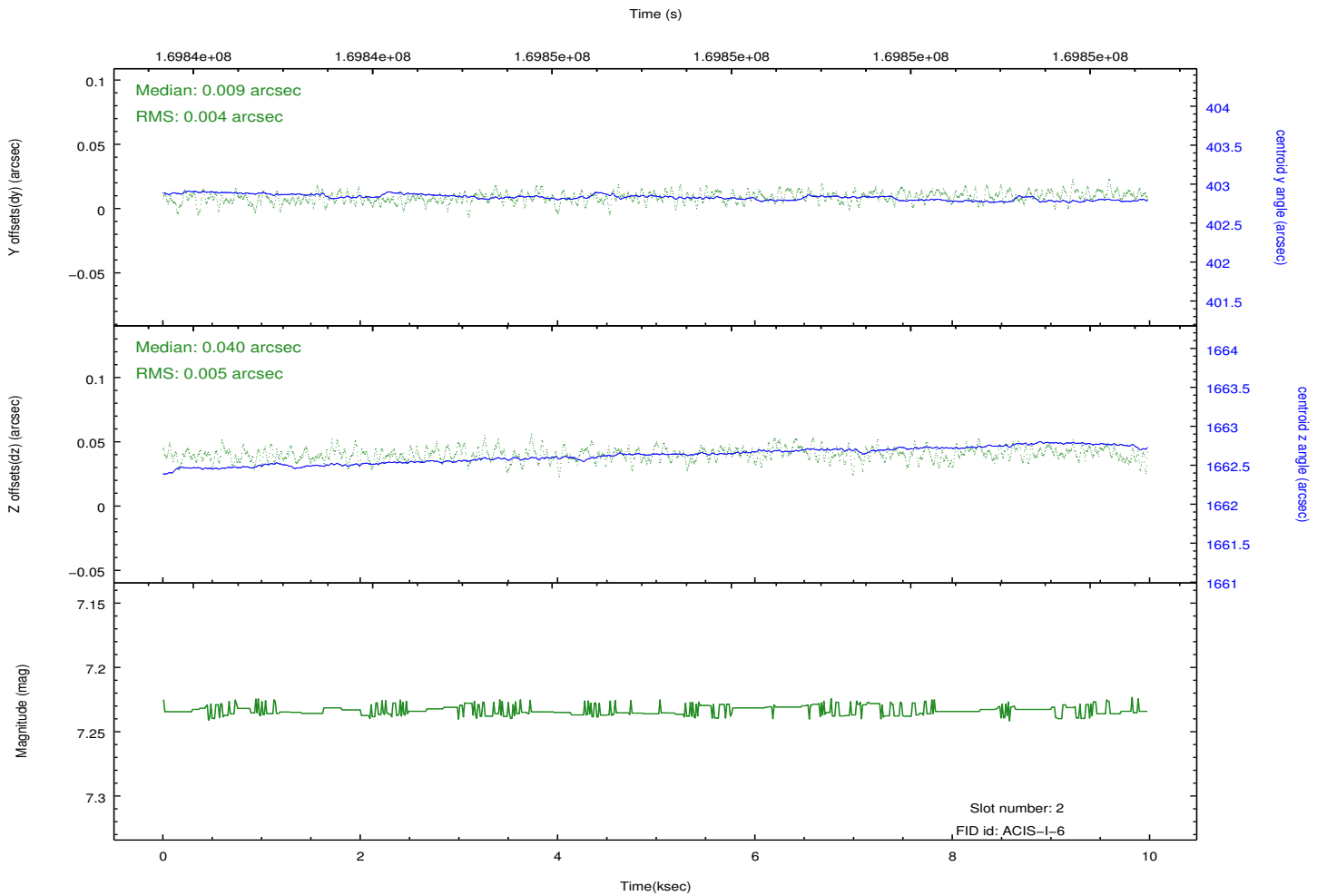
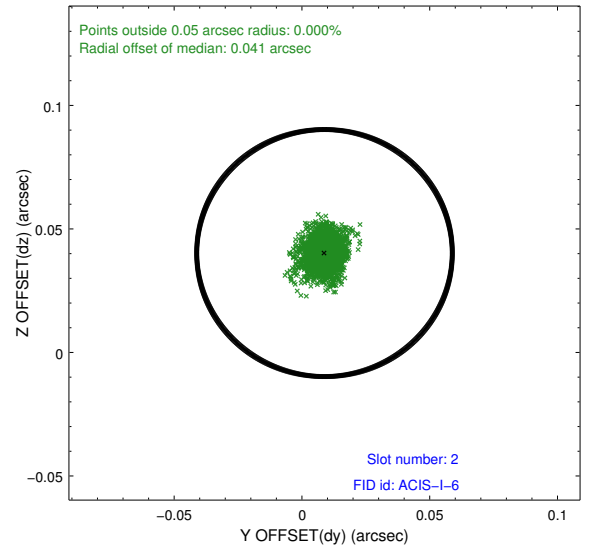
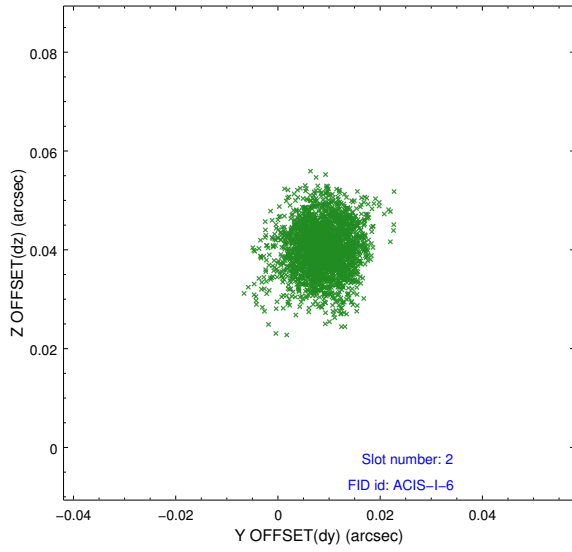
2.5.1 Slot 0



2.5.2 Slot 1



2.5.3 Slot 2



A Summary

A.1 Status

V&V Scientist	Jen Lauer
V&V Date (YYYY-MM-DD)	2012.11.15
V&V Edition	1
V&V Disposition and Status	OK
V&V Charge Time	9.561

A.2 Comments

Window constraint met.