

V&V Reference Report

L2 ASCDS Version : 8.5

Observation 4975 - L2 Version 3
Chandra X-Ray Center

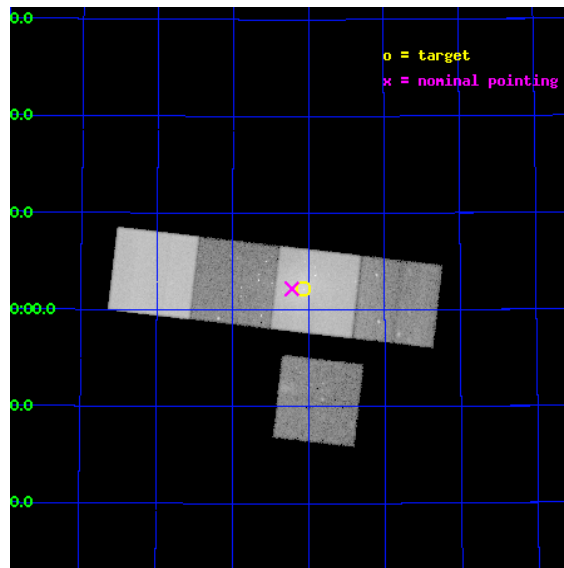
L2 Processing Date : Dec 9 2012

Contents

1	Front	2
2	OBI	3
2.1	OBI	3
2.1.1	Images	3
2.1.2	Bias	3
2.1.3	Parameters	4
2.1.4	Events	4
2.2	Compared Parameters	5
2.3	Aspect	6
2.4	Star Slots	9
2.4.1	Slot 3	9
2.4.2	Slot 4	10
2.4.3	Slot 5	11
2.4.4	Slot 6	12
2.4.5	Slot 7	13
2.5	FID Slots	14
2.5.1	Slot 0	14
2.5.2	Slot 1	15
2.5.3	Slot 2	16
A	Summary	17
A.1	Status	17
A.2	Comments	17

1 Front

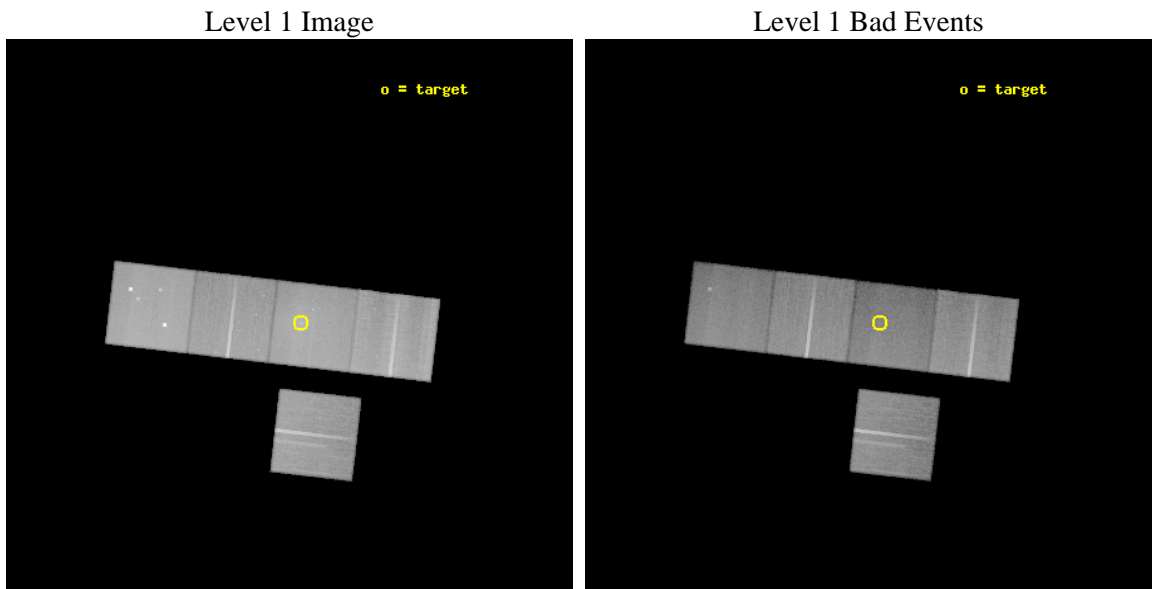
seq_num	800420	Sequence number
obs_id	4975	Observation id
title	The Formation of Wide-Angle Tailed Radio Sources: Interaction Between the Radio Lobes and the Intracluster Medium	Proposal title
observer	Prof. Elizabeth Blanton	Principal investigator
object	A1446	Source name
dtcycle	0	
cycle	P	events from which exps? Prim/Second/Both
ra_targ	180.515833	Observer's specified target RA [deg]
dec_targ	58.035944	Observer's specified target Dec [deg]
ra_nom	180.55502643412	Nominal RA [deg]
dec_nom	58.036617071203	Nominal Dec [deg]
roll_nom	6.5951865315596	Nominal Roll [deg]
revision	3	Processing version of data
ontime	59123.199886292	Sum of GTIs [s]
livetime	58350.711753911	Livetime [s]
ontime3	59120.058926046	Sum of GTIs [s]
ontime5	59123.199886292	Sum of GTIs [s]
ontime6	59104.353945315	Sum of GTIs [s]
ontime7	59123.199886292	Sum of GTIs [s]
ontime8	59123.199886292	Sum of GTIs [s]
l2events	570091	Number of level 2 events



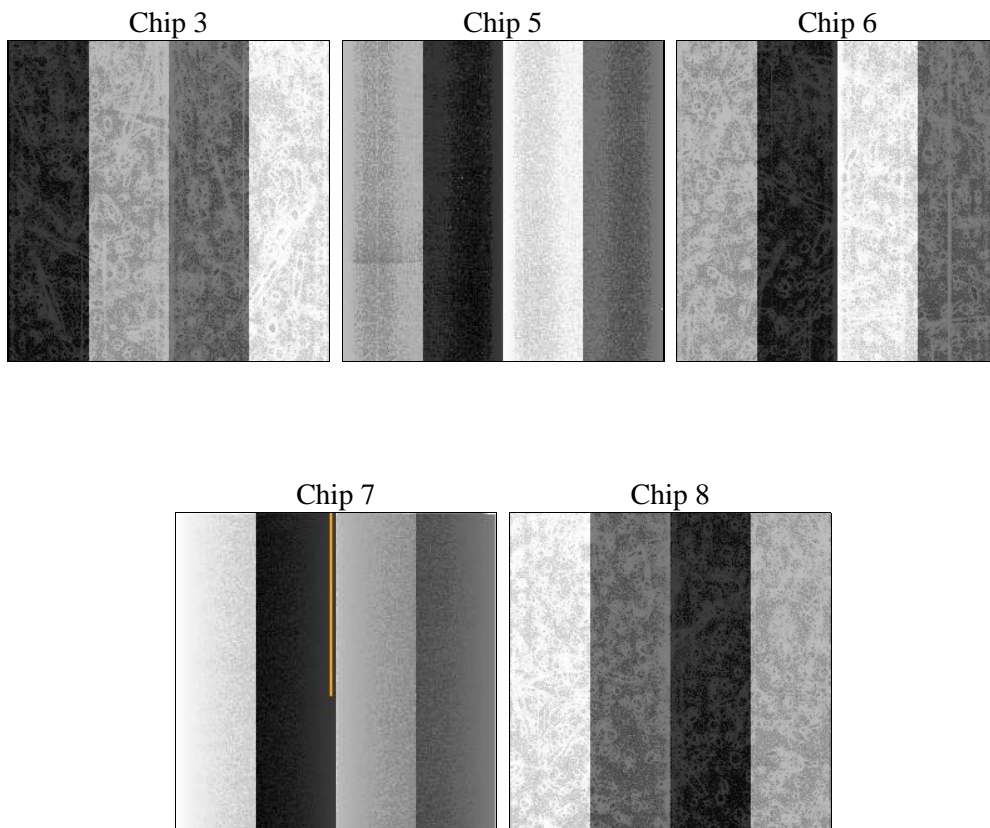
2 OBI

2.1 OBI

2.1.1 Images



2.1.2 Bias



2.1.3 Parameters

obi_num	0	Obi number	sched_exp_time	59087.803000	[s] Scheduled observation exposure time
ascdsver	8.5	Processing system revision	ontime	59123.199886292	Sum of GTIs [s]
caldbver	4.5.4	 	ontime3	59120.058926046	Sum of GTIs [s]
date	2012-12-09T10:29:31	Date and time of file creation	ontime5	59123.199886292	Sum of GTIs [s]
revision	3	Processing version of data	ontime6	59104.353945315	Sum of GTIs [s]
			ontime7	59123.199886292	Sum of GTIs [s]
			ontime8	59123.199886292	Sum of GTIs [s]
			l1events	2217357	Number of level 1 events

2.1.4 Events

	ccd 3	ccd 5	ccd 6	ccd 7	ccd 8
level 1 events	369169	524076	386723	458267	479122
rejected events	333174	257041	344621	228276	368168
rejected %	90%	49%	89%	49%	76%

	ccd 3	ccd 5	ccd 6	ccd 7	ccd 8
grade 0 events	13514	38447	16252	30148	34399
	3%	7%	4%	6%	7%
grade 1 events	210	1541	178	384	344
	0%	0%	0%	0%	0%
grade 2 events	7406	75508	8745	48503	24429
	2%	14%	2%	10%	5%
grade 3 events	4148	11693	4481	22747	12068
	1%	2%	1%	4%	2%
grade 4 events	4088	11275	4467	22381	11208
	1%	2%	1%	4%	2%
grade 5 events	14345	42076	14868	44406	21375
	3%	8%	3%	9%	4%
grade 6 events	6842	130147	8159	106236	28876
	1%	24%	2%	23%	6%
grade 7 events	318616	213389	329573	183462	346423
	86%	40%	85%	40%	72%

2.2 Compared Parameters

Parameter	Planned	Actual	Parameter	Planned	Actual
Instrument	ACIS	ACIS	Obspar format version number	7	7
Detector	ACIS-35678	ACIS-35678	Obspar file type	PREDICTED	ACTUAL
Grating	NONE	NONE	Obspar update status	NONE	UPDATED
Data mode	VFAINT	VFAINT	Number of optional ACIS chips dropped	0	0
Observation mode	POINTING	POINTING	On-chip summing requested	N	N
[deg] Pointing RA	180.514167	180.5550264341163	Subarray requested	NONE	NONE
[deg] Pointing Dec	58.020081	58.03661707120322	Alternating exposures requested	N	N
[deg] Pointing Roll	6.473221	6.595186531559637	[s] Primary exposure time	0.000000	3.1
[mm] SIM focus pos	-0.684267	-0.6828225247311905			
[mm] SIM defocus	0	0.001444936568705701			
[mm] SIM translation stage pos	-190.132523	-190.1425803651734			
[mm] SIM translation stage offset	0	0.01005778216563158			
[s] Observation start time (MET)	212860776.184000	212859630.28758			
Observation start date	2004-09-29T15:58:32	2004-09-29T15:40:30			
[s] Observation end time (MET)	212919864.184000	212920087.86528			
Observation end date	2004-09-30T08:23:20	2004-09-30T08:28:07			
Read mode	TIMED	TIMED			

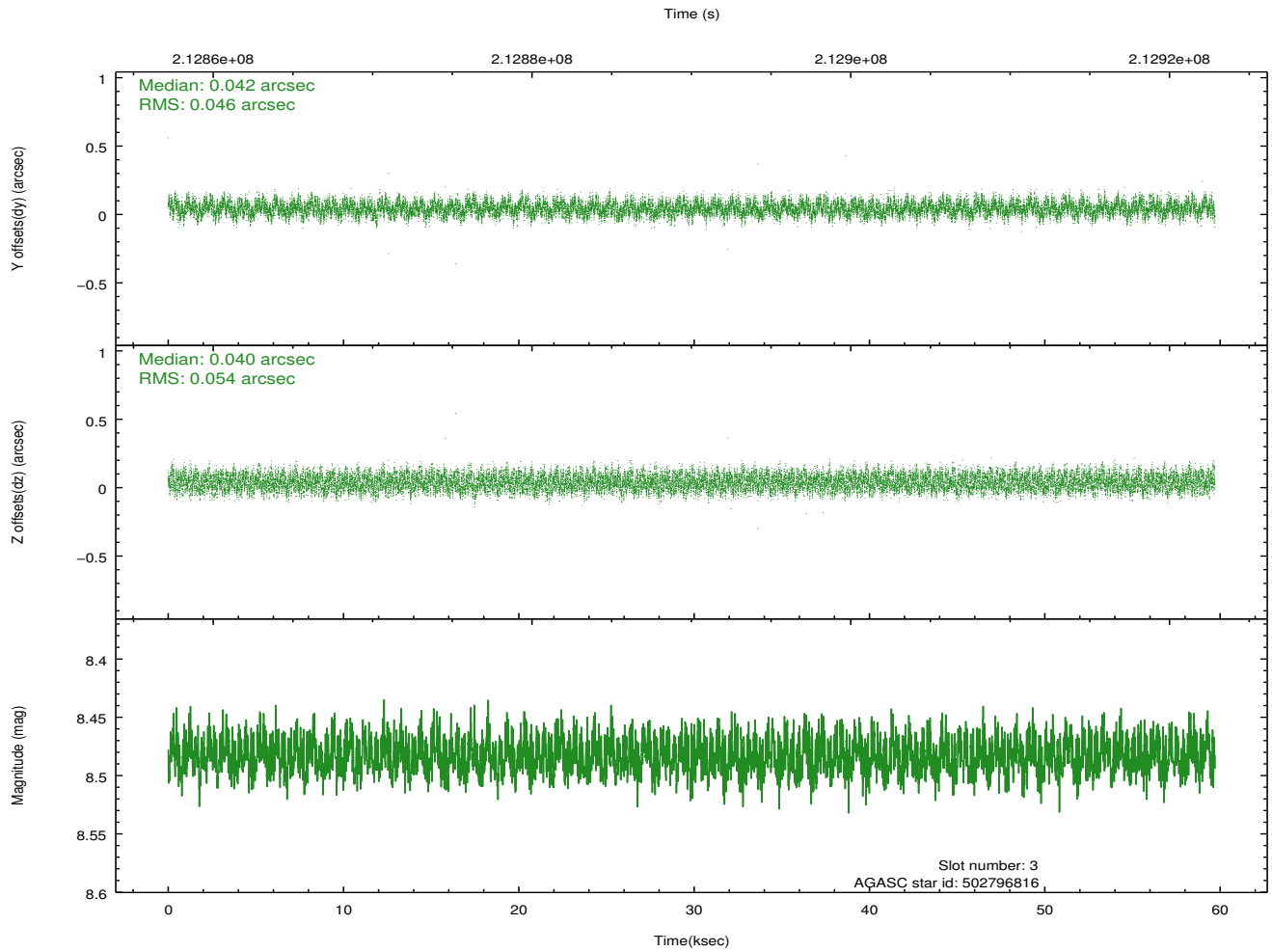
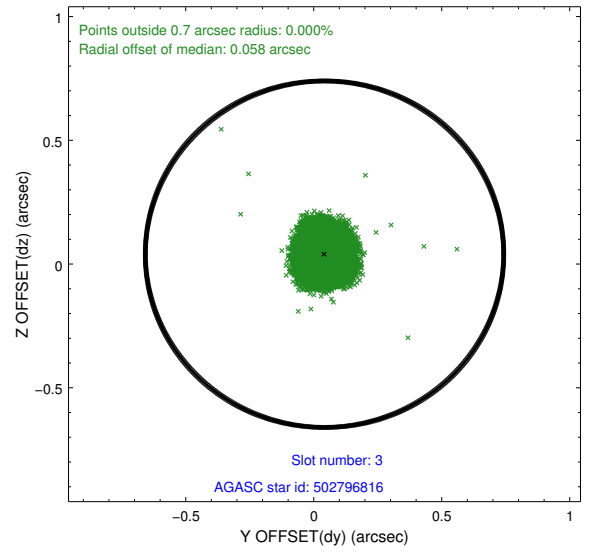
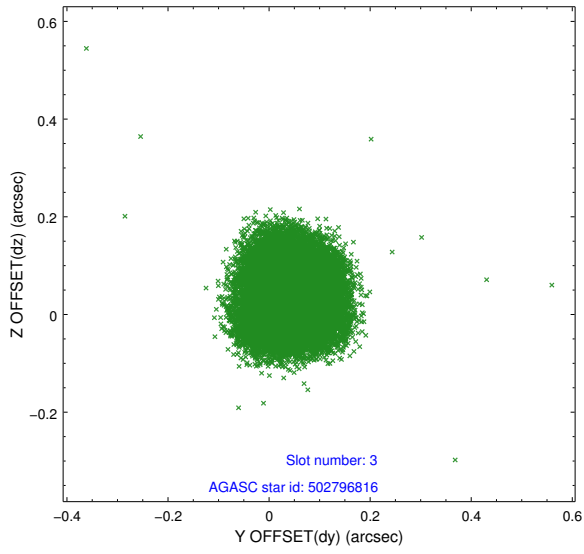
2.3 Aspect

Slot Statistics

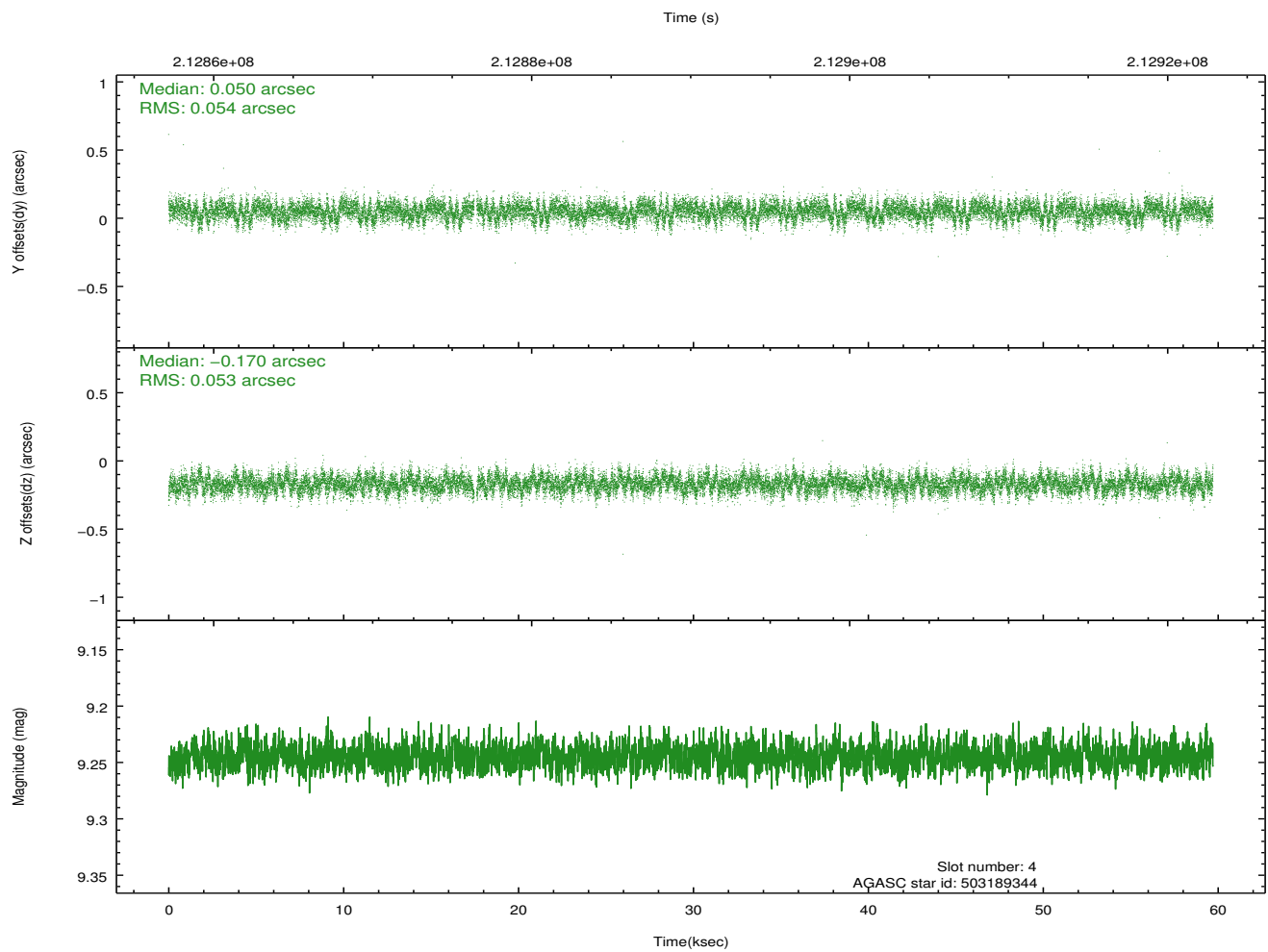
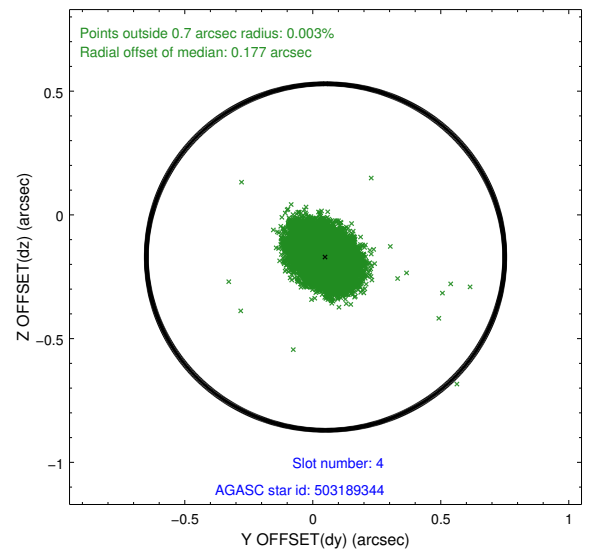
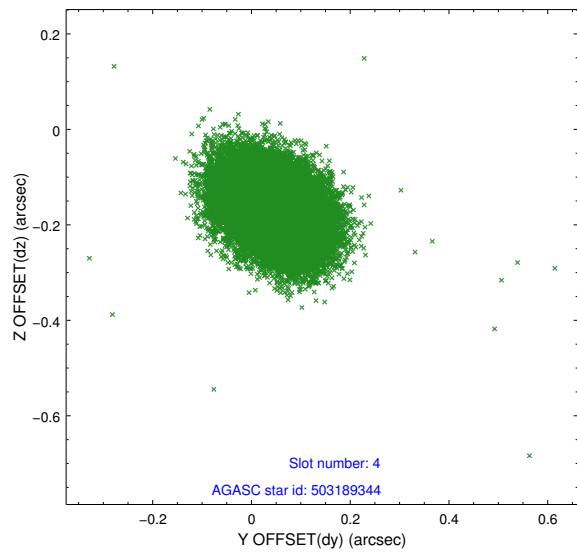
slot	status	id	mag	n_pts	med_dy	med_dz	dr1	dr2	ra	dec	mean_y	mean_z
0	FID	ACIS-S-2	7.10	14564	-0.018	-0.022	0.009	0.023	0.000000	0.000000	-760.30	-1733.22
1	FID	ACIS-S-4	7.20	14562	0.067	0.015	0.013	0.025	0.000000	0.000000	2153.08	175.35
2	FID	ACIS-S-5	7.23	14563	-0.081	0.016	0.010	0.017	0.000000	0.000000	-1813.26	168.96
3	GUIDE	502796816	8.48	29117	0.042	0.040	0.077	0.117	180.073256	57.474716	-1068.85	-1851.83
4	GUIDE	503189344	9.25	29038	0.050	-0.170	0.080	0.132	181.212469	58.115210	1359.07	197.07
5	GUIDE	503189696	9.40	29036	-0.112	-0.067	0.085	0.139	181.462277	58.579031	1996.38	1811.47
6	GUIDE	503191072	7.53	29124	-0.075	0.117	0.067	0.106	181.684877	57.600556	2076.00	-1735.42
7	GUIDE	503191544	9.15	29107	0.098	0.081	0.077	0.126	180.475409	57.943450	-104.10	-265.67

2.4 Star Slots

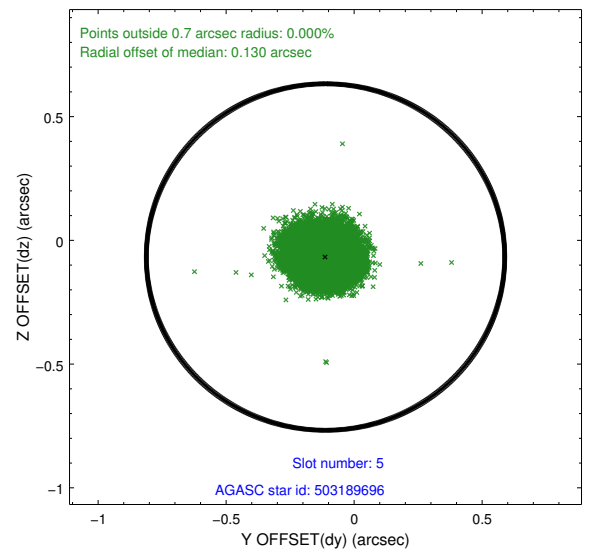
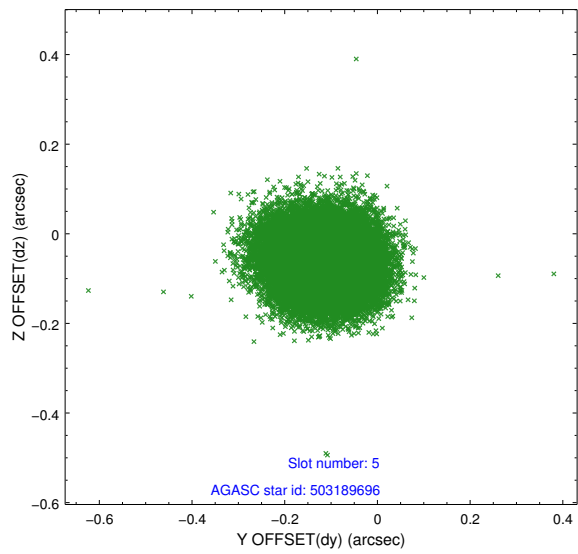
2.4.1 Slot 3



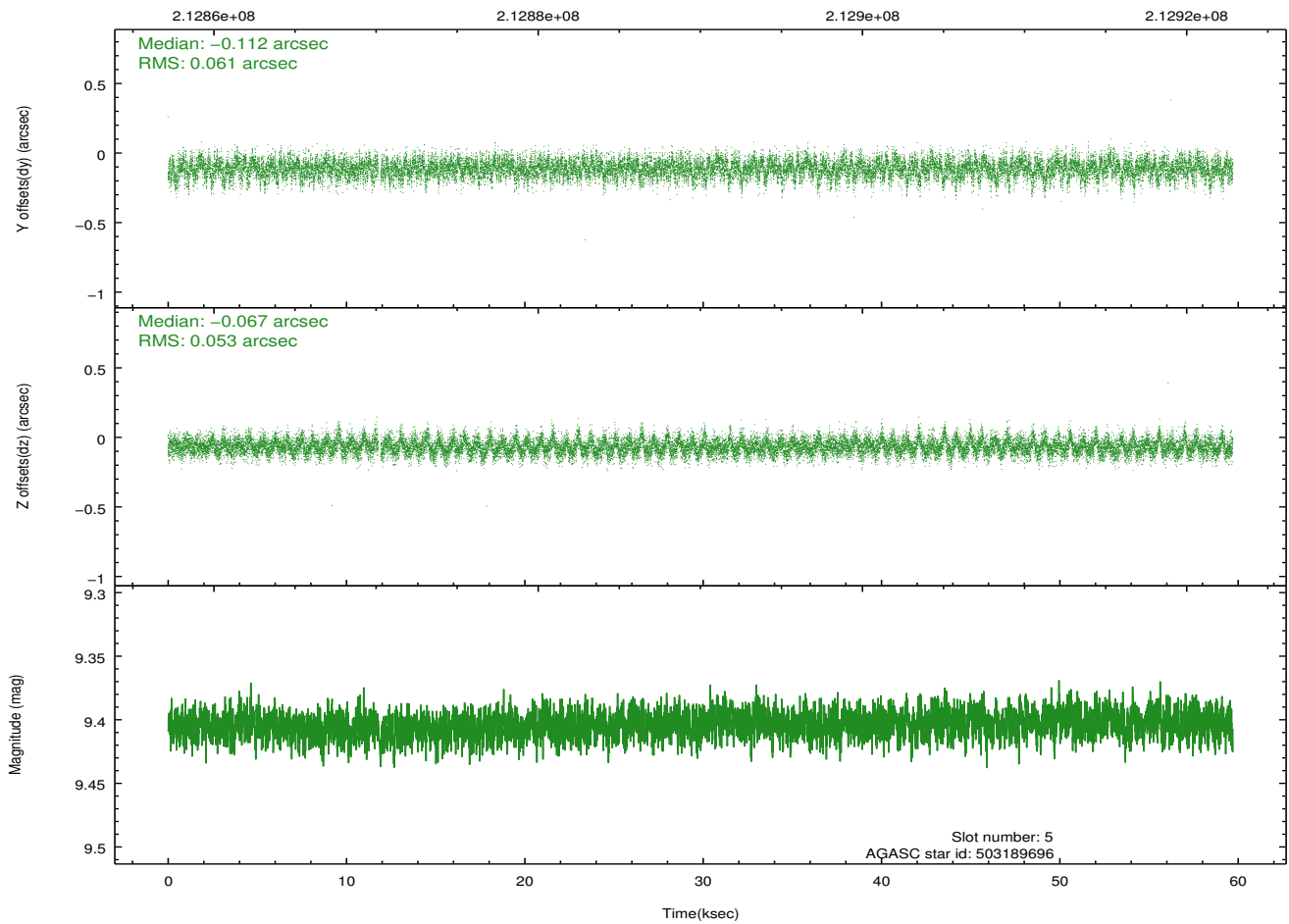
2.4.2 Slot 4



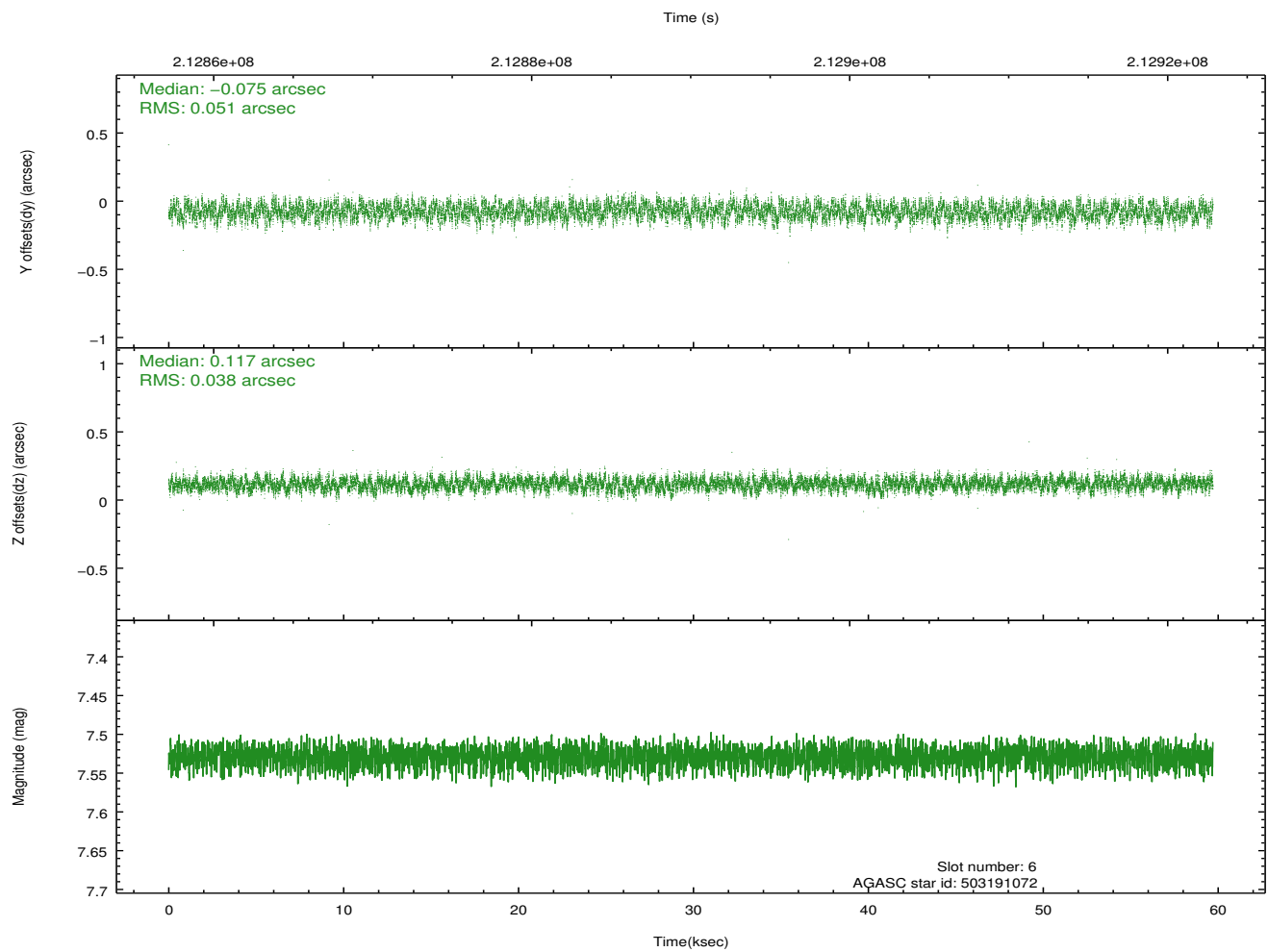
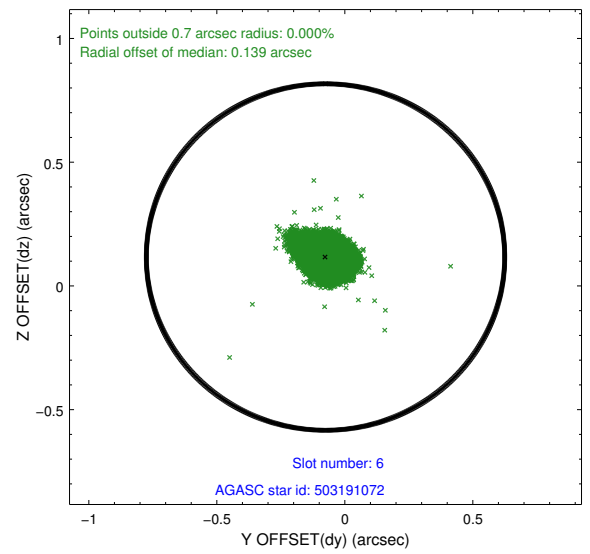
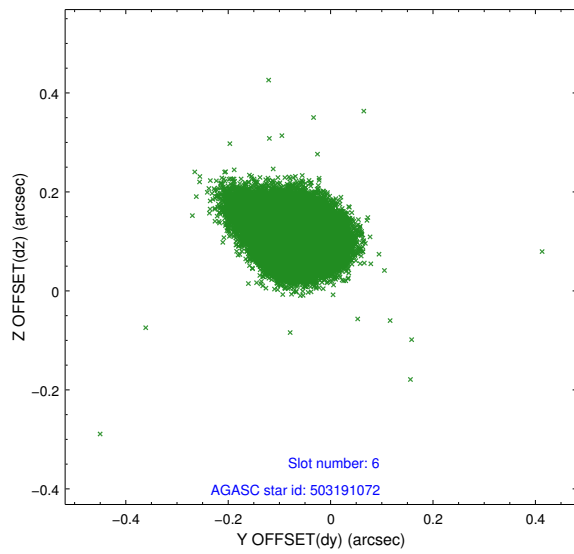
2.4.3 Slot 5



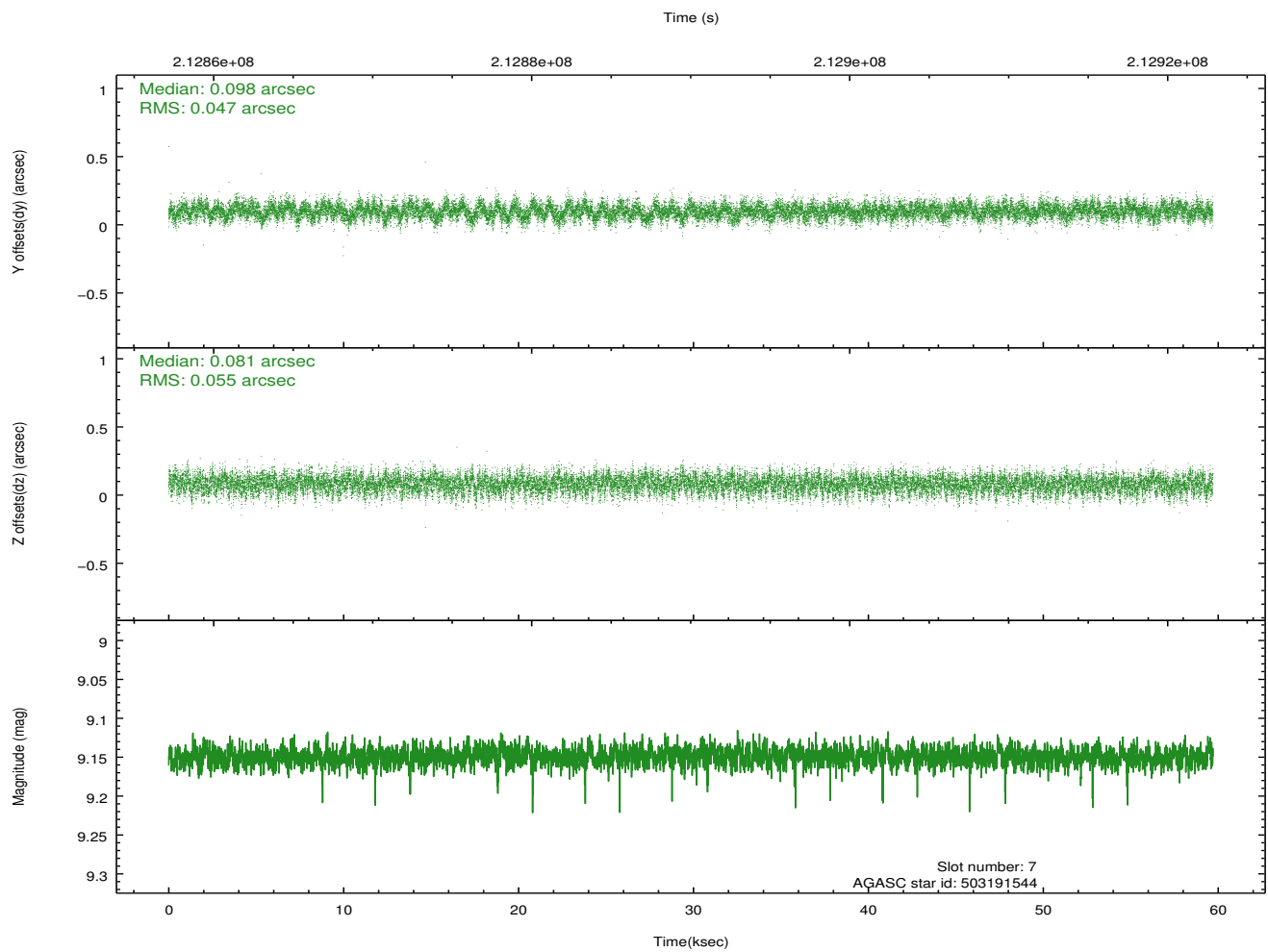
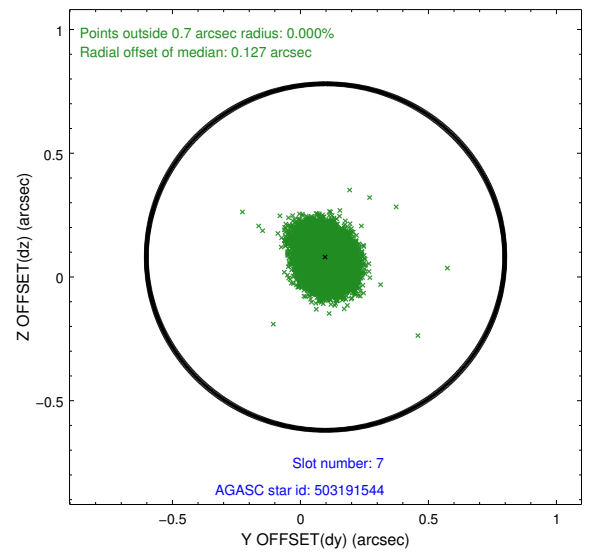
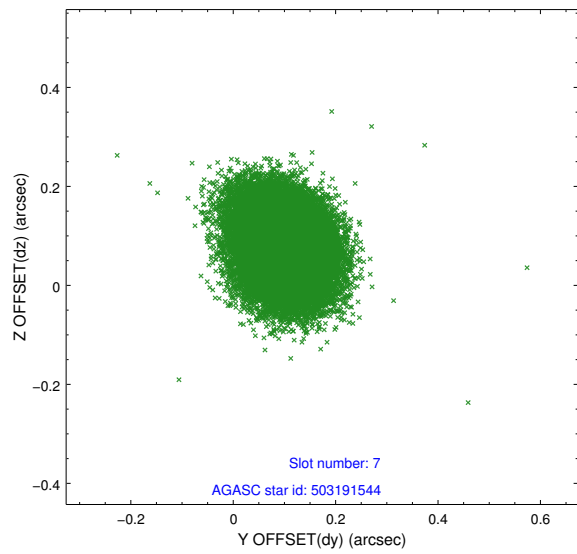
Time (s)



2.4.4 Slot 6

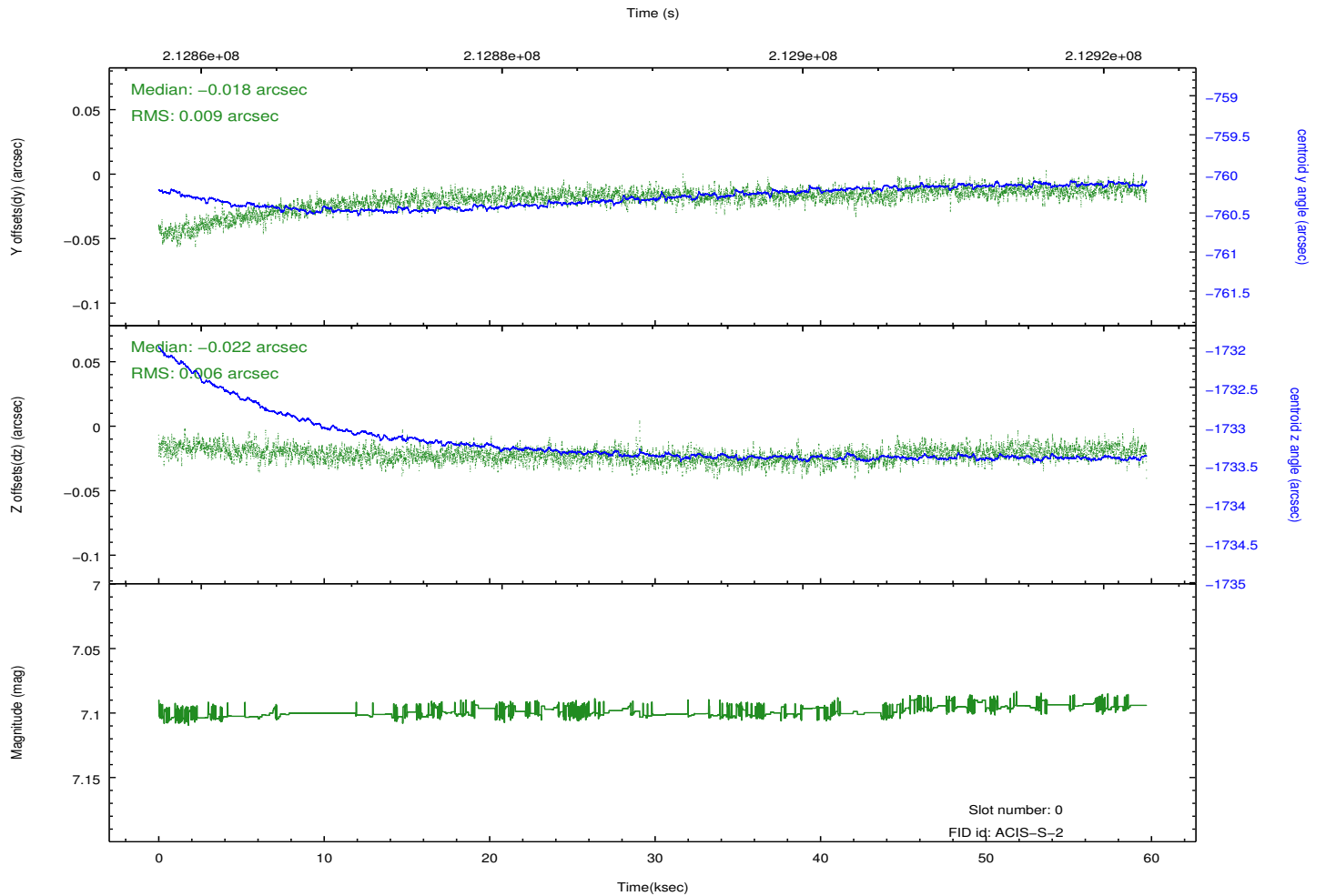
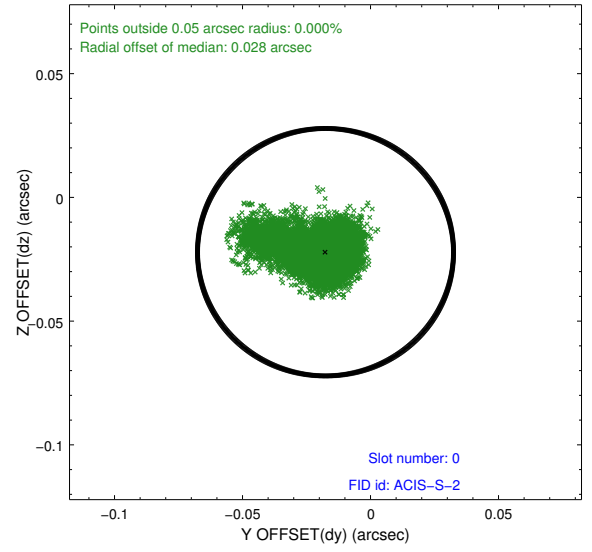
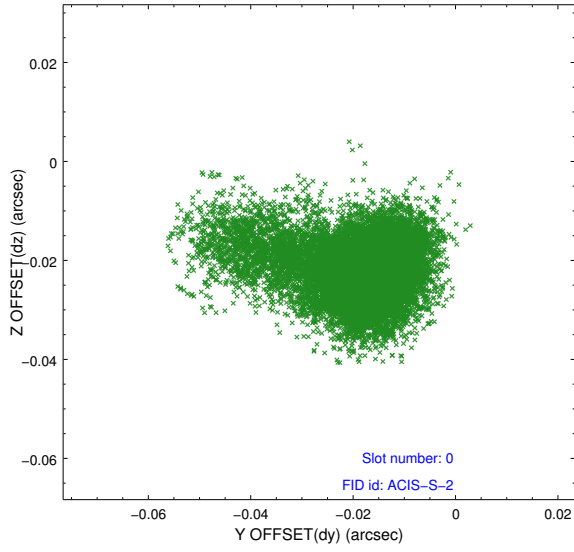


2.4.5 Slot 7

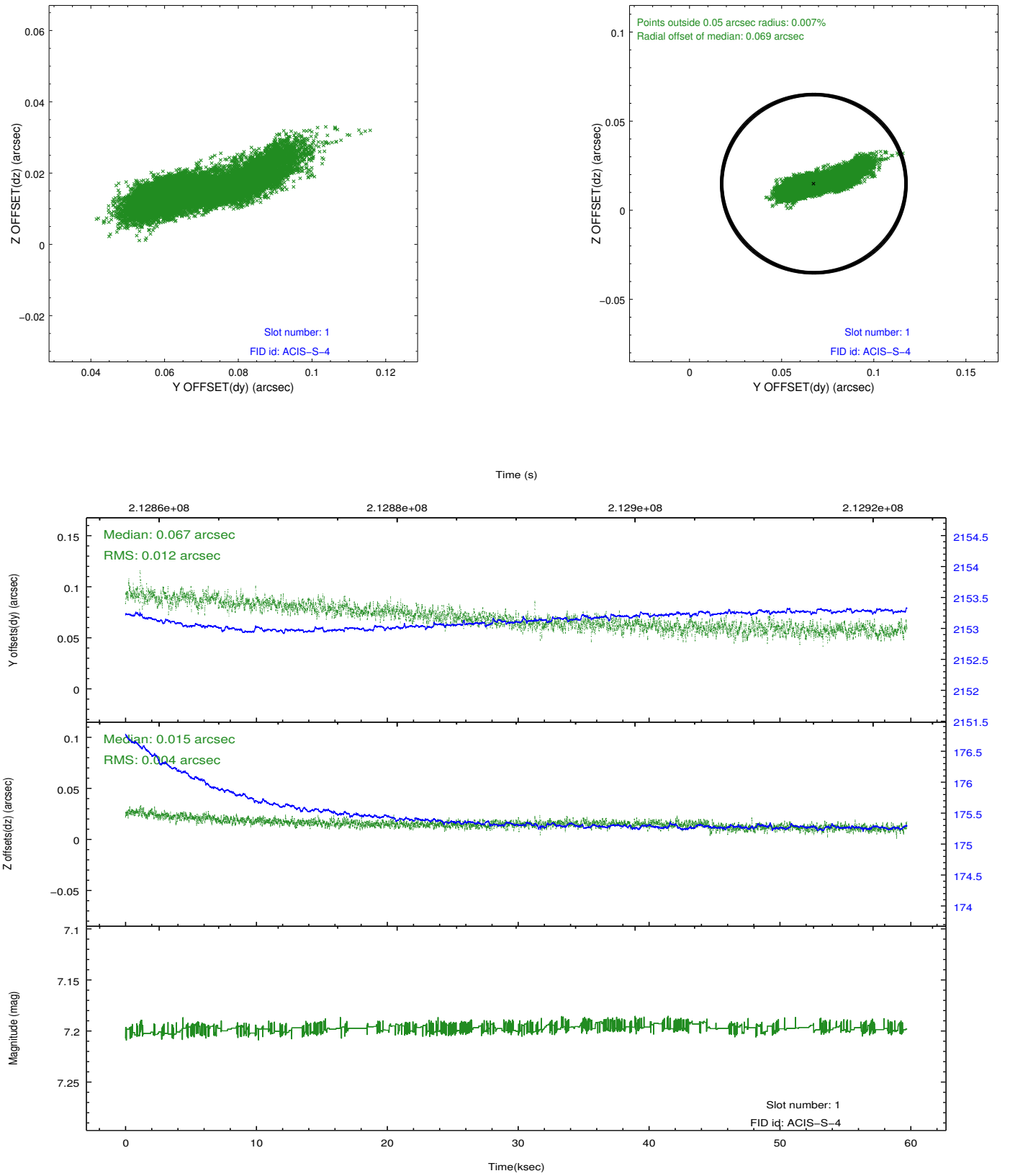


2.5 FID Slots

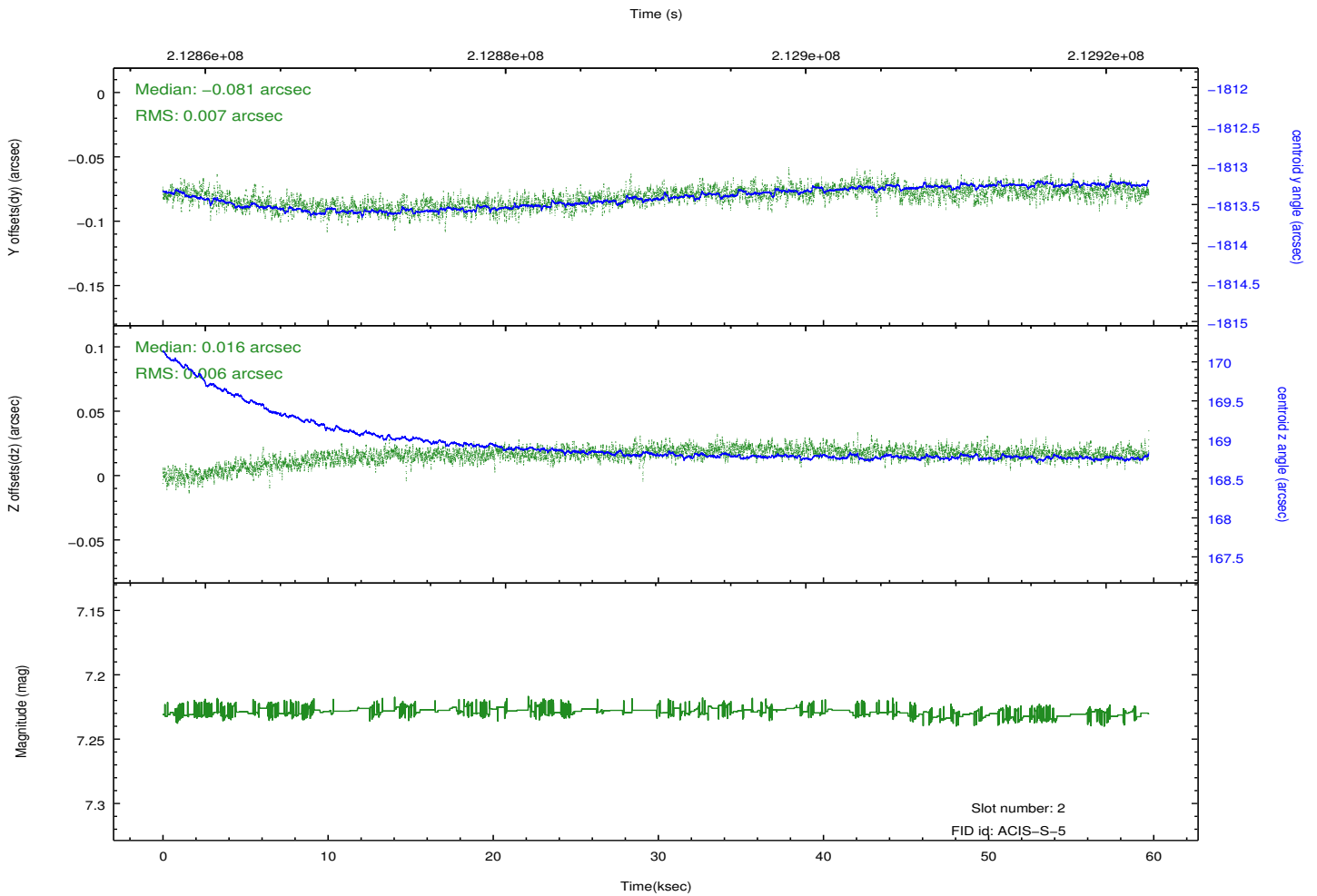
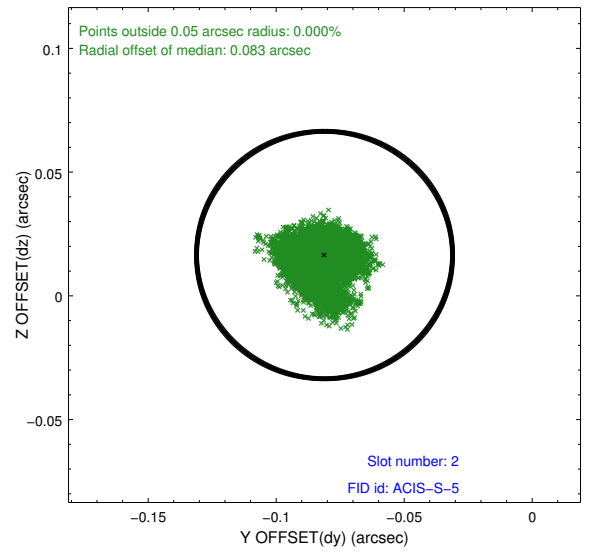
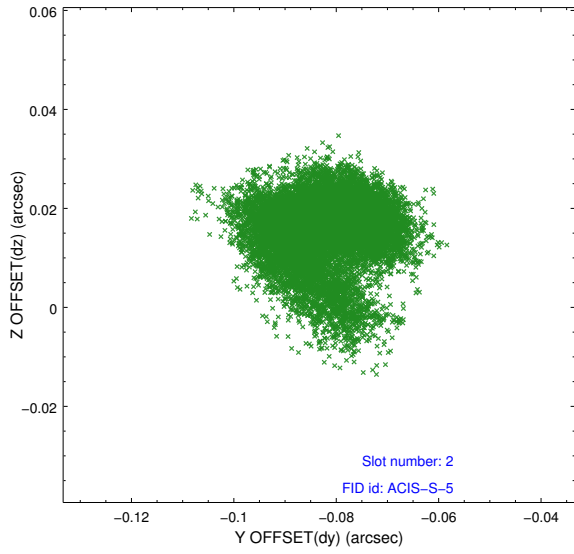
2.5.1 Slot 0



2.5.2 Slot 1



2.5.3 Slot 2



A Summary

A.1 Status

V&V Scientist	Beth Sundheim
V&V Date (YYYY-MM-DD)	2013.01.02
V&V Edition	1
V&V Disposition and Status	OK
V&V Charge Time	59.123

A.2 Comments