

# V&V Reference Report

## L2 ASCDS Version : 8.5

Observation 5025 - L2 Version 3  
Chandra X-Ray Center

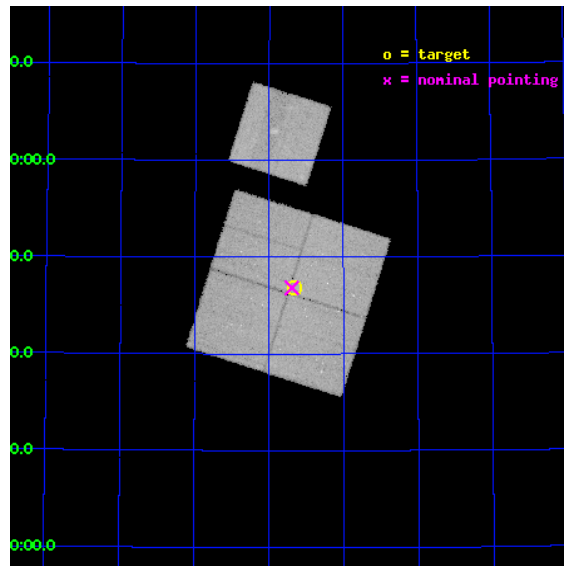
L2 Processing Date : Dec 9 2012

## Contents

<b>1</b>	<b>Front</b>	<b>2</b>
<b>2</b>	<b>OBI</b>	<b>3</b>
2.1	OBI . . . . .	3
2.1.1	Images . . . . .	3
2.1.2	Bias . . . . .	3
2.1.3	Parameters . . . . .	4
2.1.4	Events . . . . .	4
2.2	Compared Parameters . . . . .	5
2.3	Aspect . . . . .	6
2.4	Star Slots . . . . .	9
2.4.1	Slot 3 . . . . .	9
2.4.2	Slot 4 . . . . .	10
2.4.3	Slot 5 . . . . .	11
2.4.4	Slot 6 . . . . .	12
2.4.5	Slot 7 . . . . .	13
2.5	FID Slots . . . . .	14
2.5.1	Slot 0 . . . . .	14
2.5.2	Slot 1 . . . . .	15
2.5.3	Slot 2 . . . . .	16
<b>A</b>	<b>Summary</b>	<b>17</b>
A.1	Status . . . . .	17
A.2	Comments . . . . .	17

# 1 Front

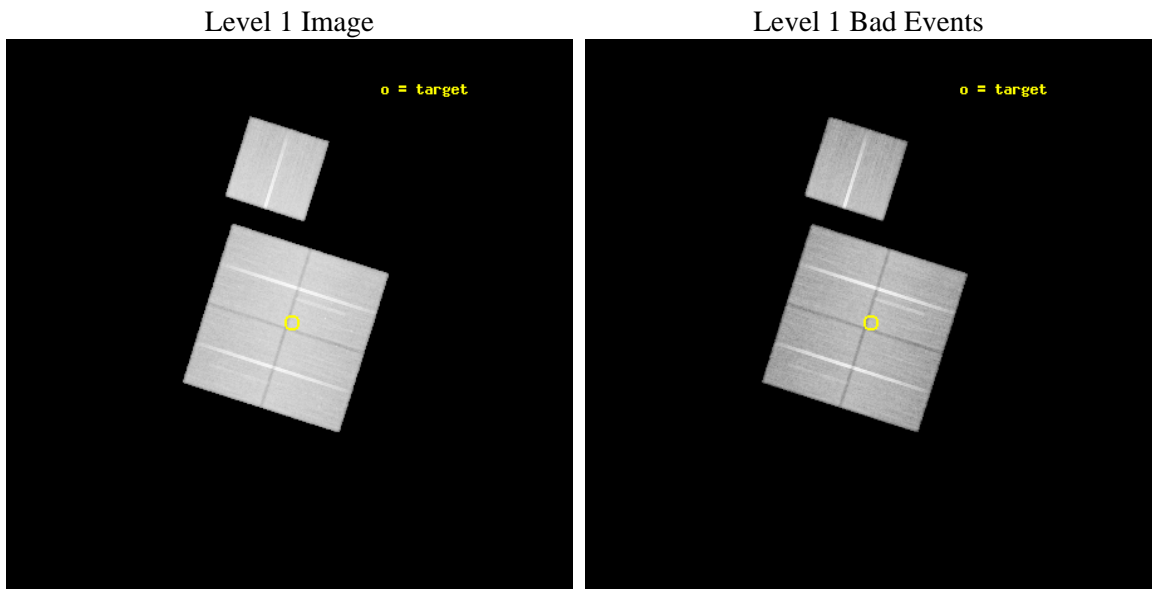
seq_num	900332	Sequence number
obs_id	5025	Observation id
title	The Balance of Power between Starbursts and AGN: a Chandra/SIRTf Survey.	Proposal title
observer	Dr. Belinda Wilkes	Principal investigator
object	SWIRE LOCKMAN 2	Source name
dtcycle	0	&#160
cycle	P	events from which exps? Prim/Second/Both
ra_targ	161.664333	Observer's specified target RA [deg]
dec_targ	58.7809	Observer's specified target Dec [deg]
ra_nom	161.67325698721	Nominal RA [deg]
dec_nom	58.78047059749	Nominal Dec [deg]
roll_nom	17.601056121245	Nominal Roll [deg]
revision	3	Processing version of data
ontime	70174.373607308	Sum of GTIs [s]
livetime	69257.493754506	Livetime [s]
ontime0	70168.335974067	Sum of GTIs [s]
ontime1	70143.208391488	Sum of GTIs [s]
ontime2	70158.913033456	Sum of GTIs [s]
ontime3	70174.373607308	Sum of GTIs [s]
ontime6	70177.758874863	Sum of GTIs [s]
l2events	266574	Number of level 2 events



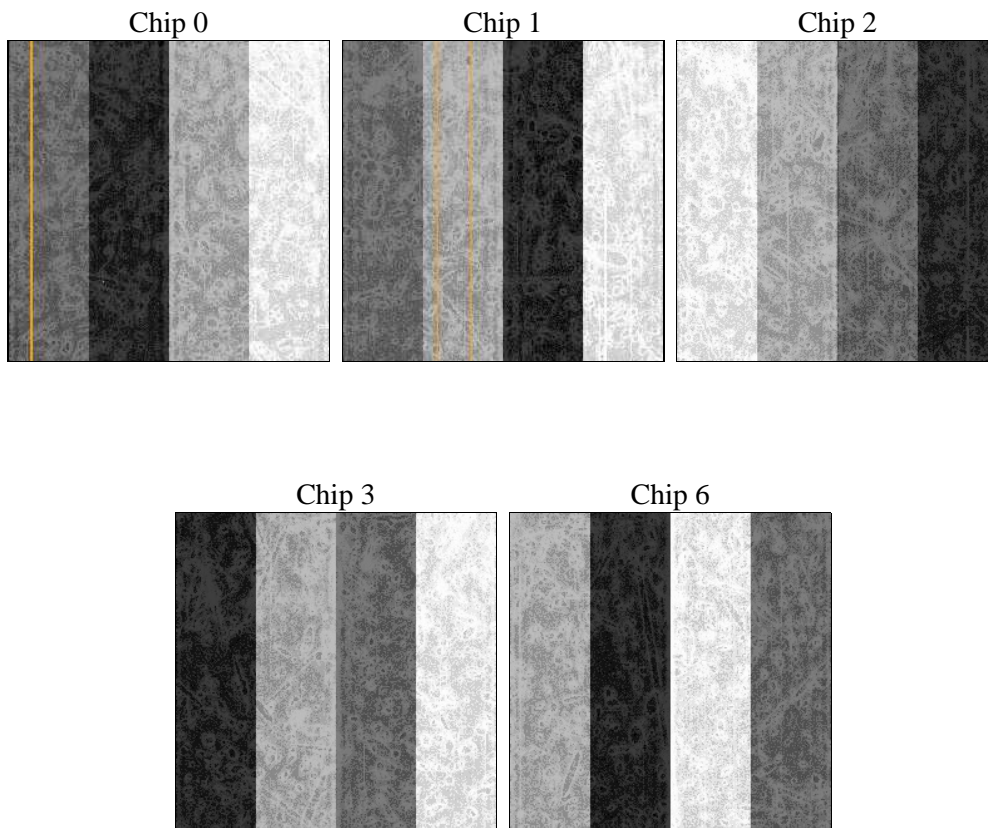
## 2 OBI

### 2.1 OBI

#### 2.1.1 Images



#### 2.1.2 Bias



### 2.1.3 Parameters

obi_num	1	Obi number	sched_exp_time	70000.000000	[s] Scheduled observation exposure time
ascdsver	8.5	Processing system revision	ontime	70174.373607308	Sum of GTIs [s]
caldbver	4.5.4	&#160	ontime0	70168.335974067	Sum of GTIs [s]
date	2012-12-09T03:34:56	Date and time of file creation	ontime1	70143.208391488	Sum of GTIs [s]
revision	3	Processing version of data	ontime2	70158.913033456	Sum of GTIs [s]
			ontime3	70174.373607308	Sum of GTIs [s]
			ontime6	70177.758874863	Sum of GTIs [s]
			l1events	2460514	Number of level 1 events

### 2.1.4 Events

	ccd 0	ccd 1	ccd 2	ccd 3	ccd 6
level 1 events	462994	471652	510947	508563	506358
rejected events	400757	406926	448833	448279	444645
rejected %	86%	86%	87%	88%	87%

	ccd 0	ccd 1	ccd 2	ccd 3	ccd 6
grade 0 events	25769	25081	27643	25733	24552
	5%	5%	5%	5%	4%
grade 1 events	281	256	334	329	250
	0%	0%	0%	0%	0%
grade 2 events	13951	14590	13107	12238	13388
	3%	3%	2%	2%	2%
grade 3 events	6055	6129	5633	5698	5861
	1%	1%	1%	1%	1%
grade 4 events	5534	6137	5781	5769	5777
	1%	1%	1%	1%	1%
grade 5 events	20606	21383	19769	22656	22795
	4%	4%	3%	4%	4%
grade 6 events	11128	12956	10164	11028	12316
	2%	2%	1%	2%	2%
grade 7 events	379670	385120	428516	425112	421419
	82%	81%	83%	83%	83%

## 2.2 Compared Parameters

Parameter	Planned	Actual	Parameter	Planned	Actual
Instrument	ACIS	ACIS	Obspar format version number	7	7
Detector	ACIS-01236	ACIS-01236	Obspar file type	PREDICTED	ACTUAL
Grating	NONE	NONE	Obspar update status	NONE	UPDATED
Data mode	VFAINT	VFAINT	Number of optional ACIS chips dropped	0	0
Observation mode	POINTING	POINTING	On-chip summing requested	N	N
[deg] Pointing RA	161.637789	161.6732569872087	Subarray requested	NONE	NONE
[deg] Pointing Dec	58.760165	58.78047059748977	Alternating exposures requested	N	N
[deg] Pointing Roll	17.422691	17.60105612124542	[s] Primary exposure time	0.000000	3.1
[deg] Roll angle	19.200000	19.200000			
[deg] Roll tolerance	1.800000	1.800000			
Roll constraint allows 180D rotation	Y	Y			
[mm] SIM focus pos	-0.782348	-0.7809083437167272			
[mm] SIM defocus	0	0.001439871863259334			
[mm] SIM translation stage pos	-233.592463	-233.5874344608287			
[mm] SIM translation stage offset	0	-0.005018542100998502			
[s] Observation start time (MET)	211841362.184000	211840267.74201			
Observation start date	2004-09-17T20:48:18	2004-09-17T20:31:07			
[s] Observation end time (MET)	211911362.184000	211911496.0202			
Observation end date	2004-09-18T16:14:58	2004-09-18T16:18:16			
Read mode	TIMED	TIMED			

## 2.3 Aspect

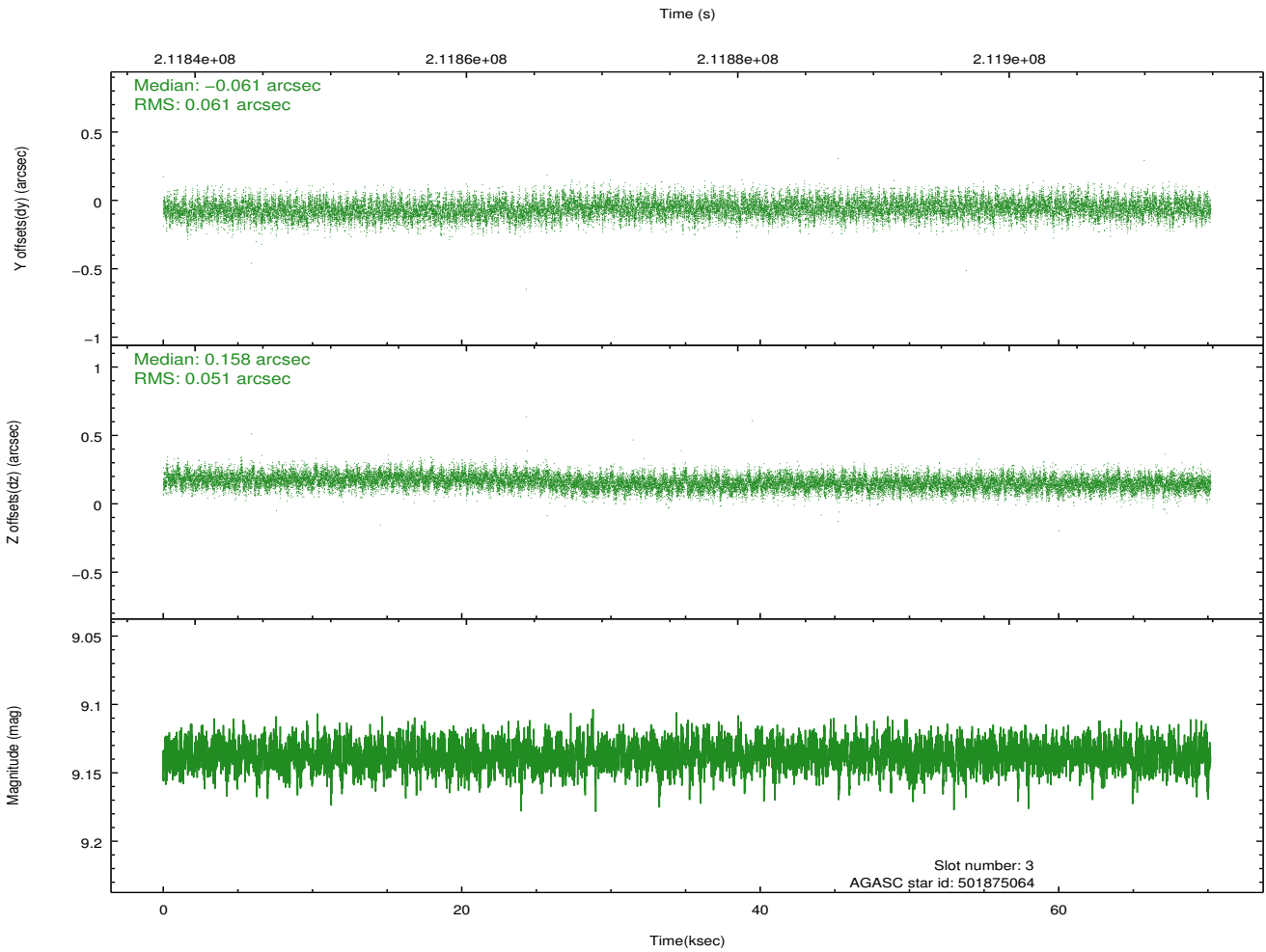
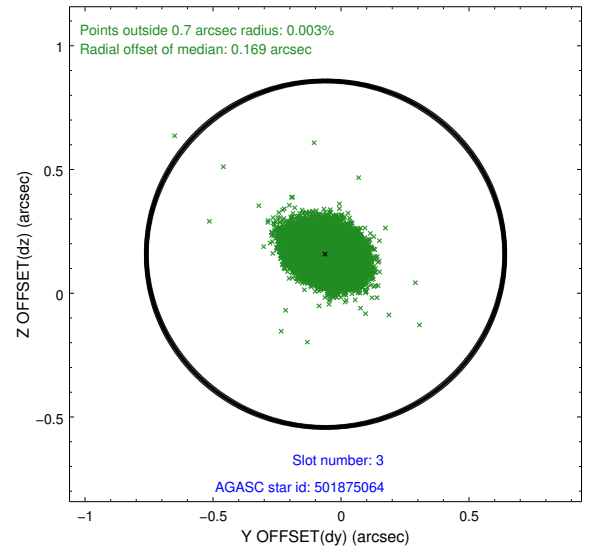
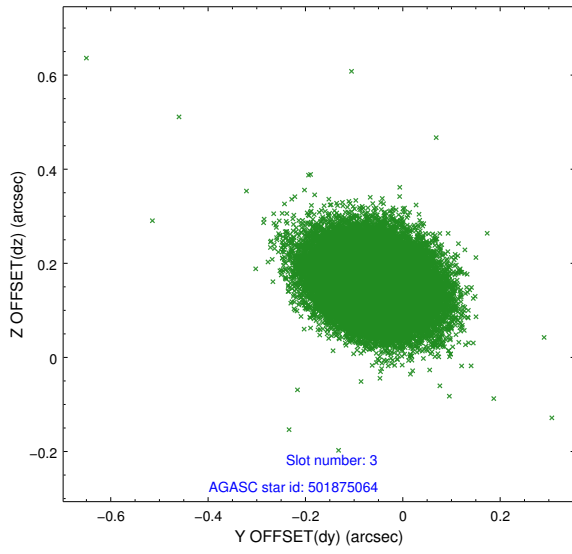


### Slot Statistics

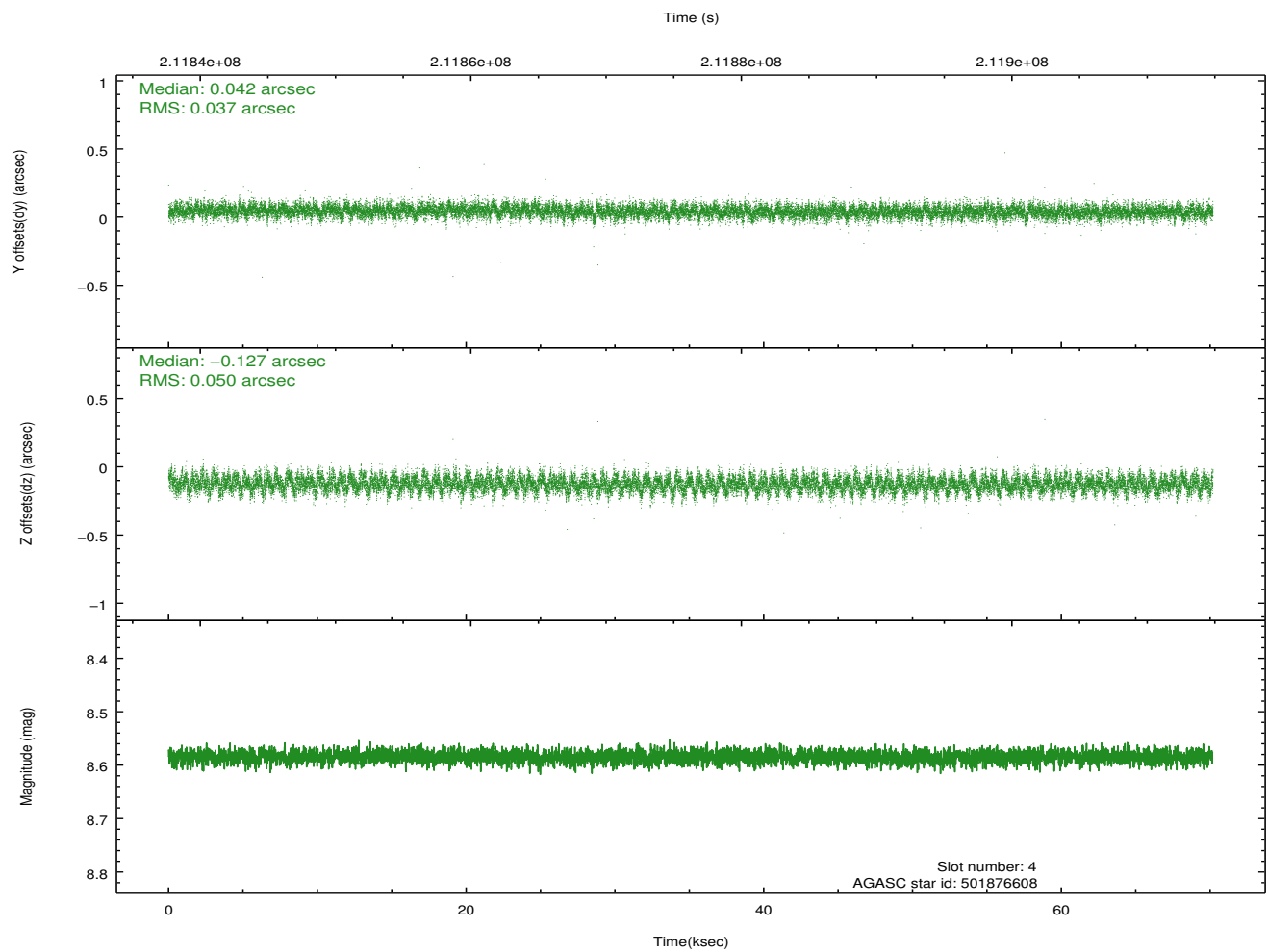
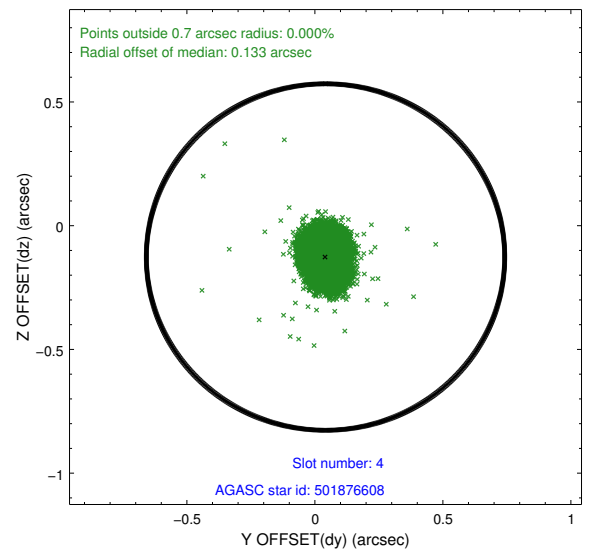
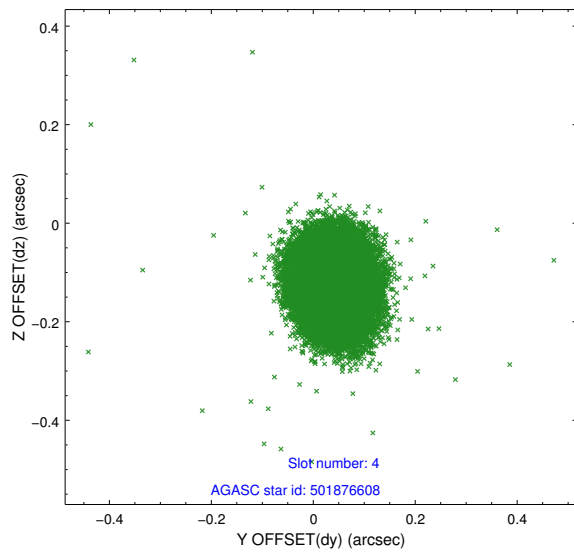
slot	status	id	mag	n_pts	med_dy	med_dz	dr1	dr2	ra	dec	mean_y	mean_z
0	FID	ACIS-I-1	7.24	17117	-0.020	-0.071	0.012	0.033	0.000000	0.000000	932.24	-835.34
1	FID	ACIS-I-4	7.18	17116	0.116	0.082	0.018	0.029	0.000000	0.000000	2152.40	1064.63
2	FID	ACIS-I-5	7.22	17119	-0.192	0.059	0.015	0.023	0.000000	0.000000	-1815.99	1062.43
3	GUIDE	501875064	9.14	34210	-0.061	0.158	0.085	0.138	163.017696	58.369846	2072.23	-2094.81
4	GUIDE	501876608	8.58	34228	0.042	-0.127	0.066	0.106	161.204341	58.717464	-818.14	98.18
5	GUIDE	501878216	8.97	34222	-0.002	-0.051	0.106	0.167	161.663048	59.249982	572.38	1668.69
6	GUIDE	501878576	7.82	34234	-0.107	-0.016	0.059	0.095	161.532118	59.060873	137.63	1091.75
7	GUIDE	501881944	9.69	34208	0.127	0.039	0.114	0.197	160.035064	59.170822	-2367.70	2329.35

## 2.4 Star Slots

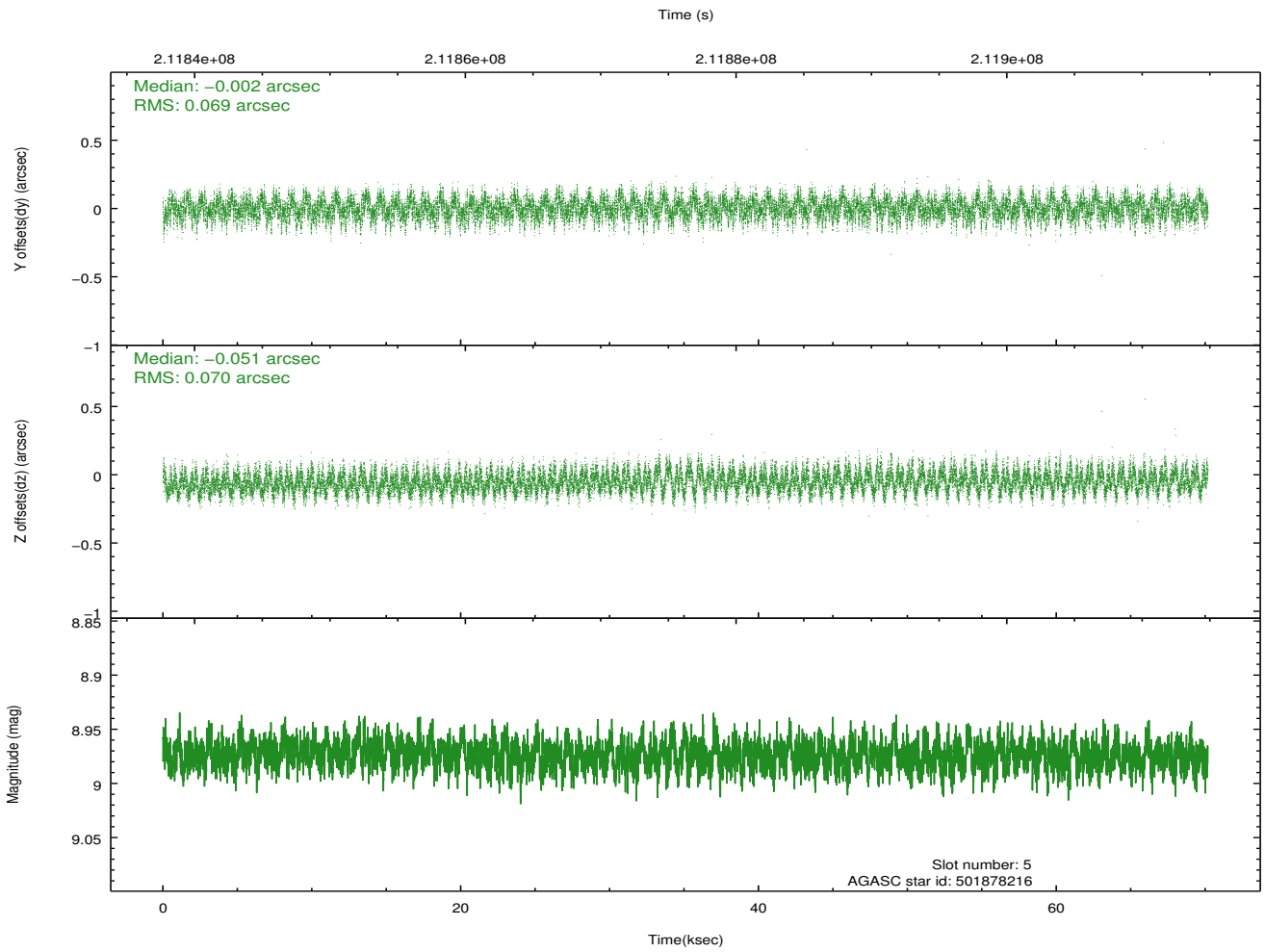
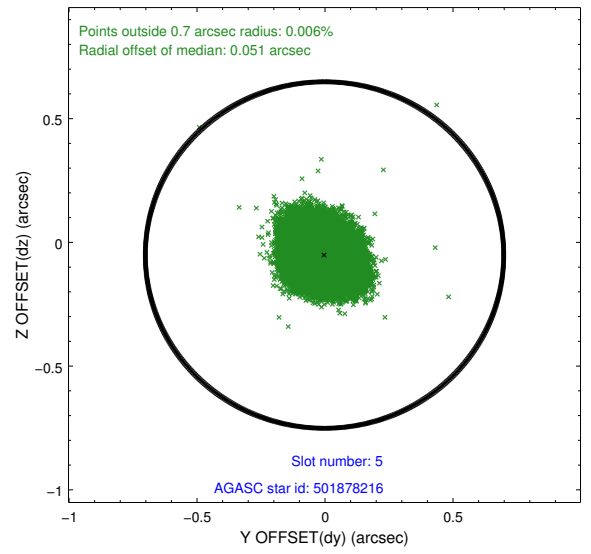
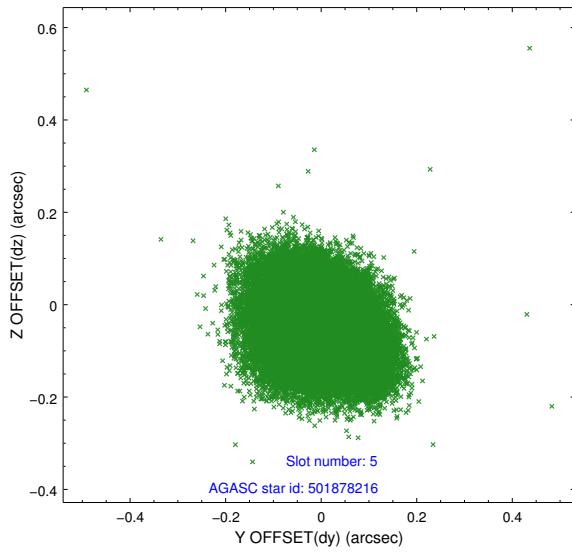
### 2.4.1 Slot 3



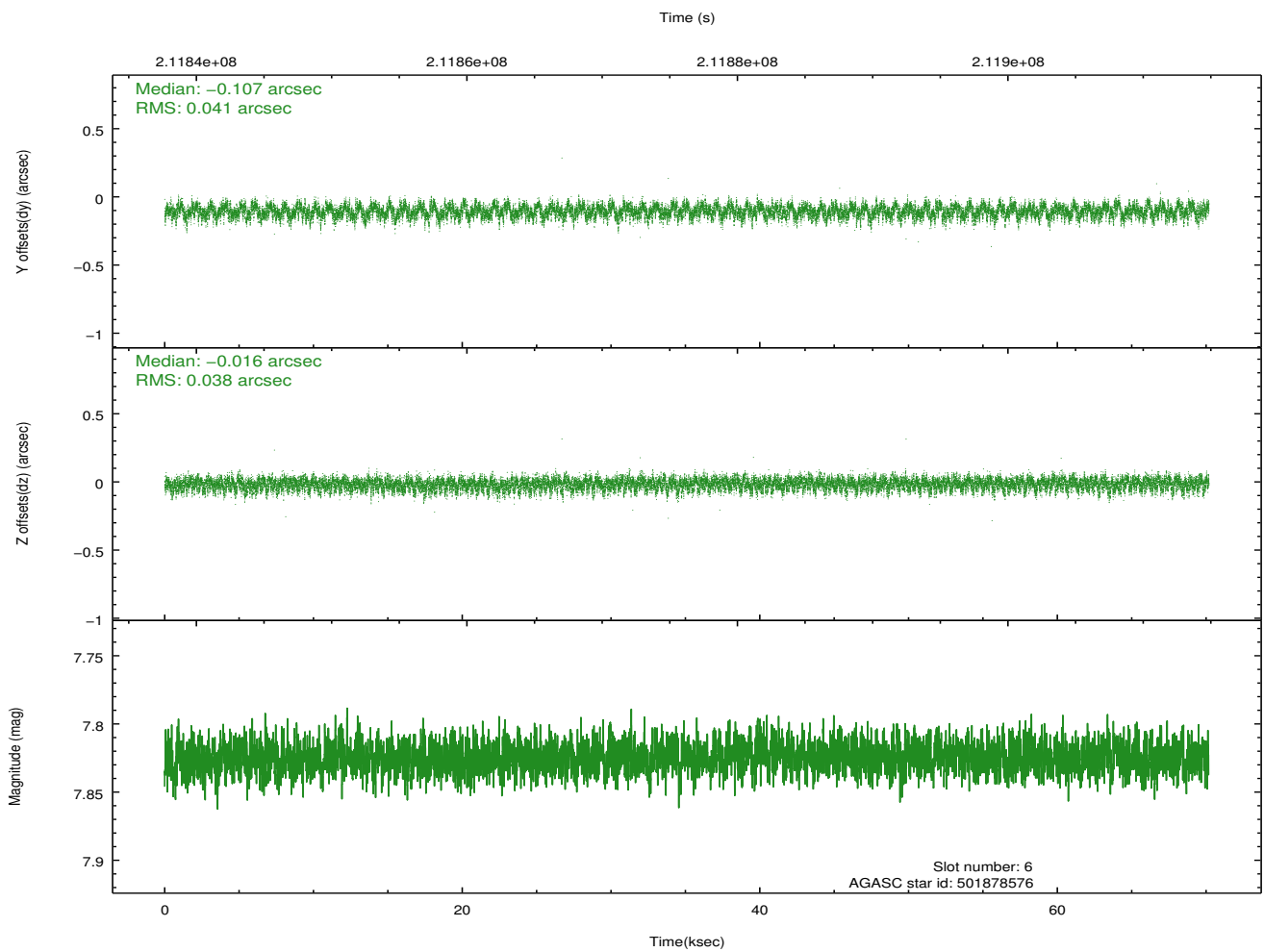
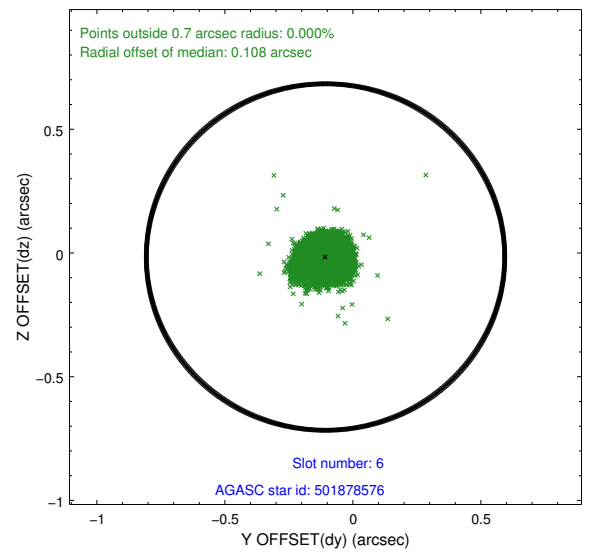
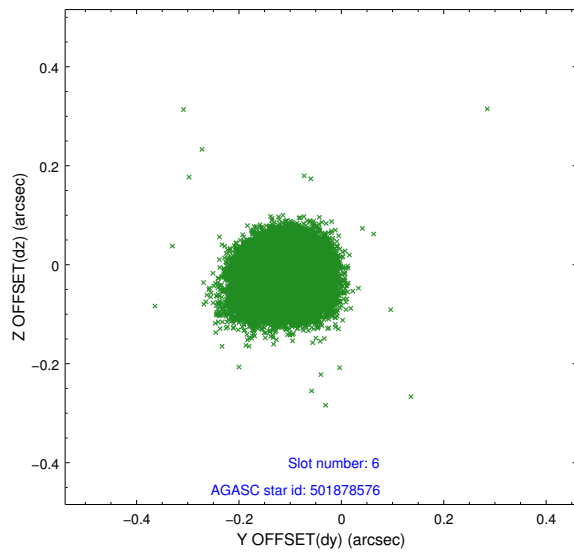
## 2.4.2 Slot 4



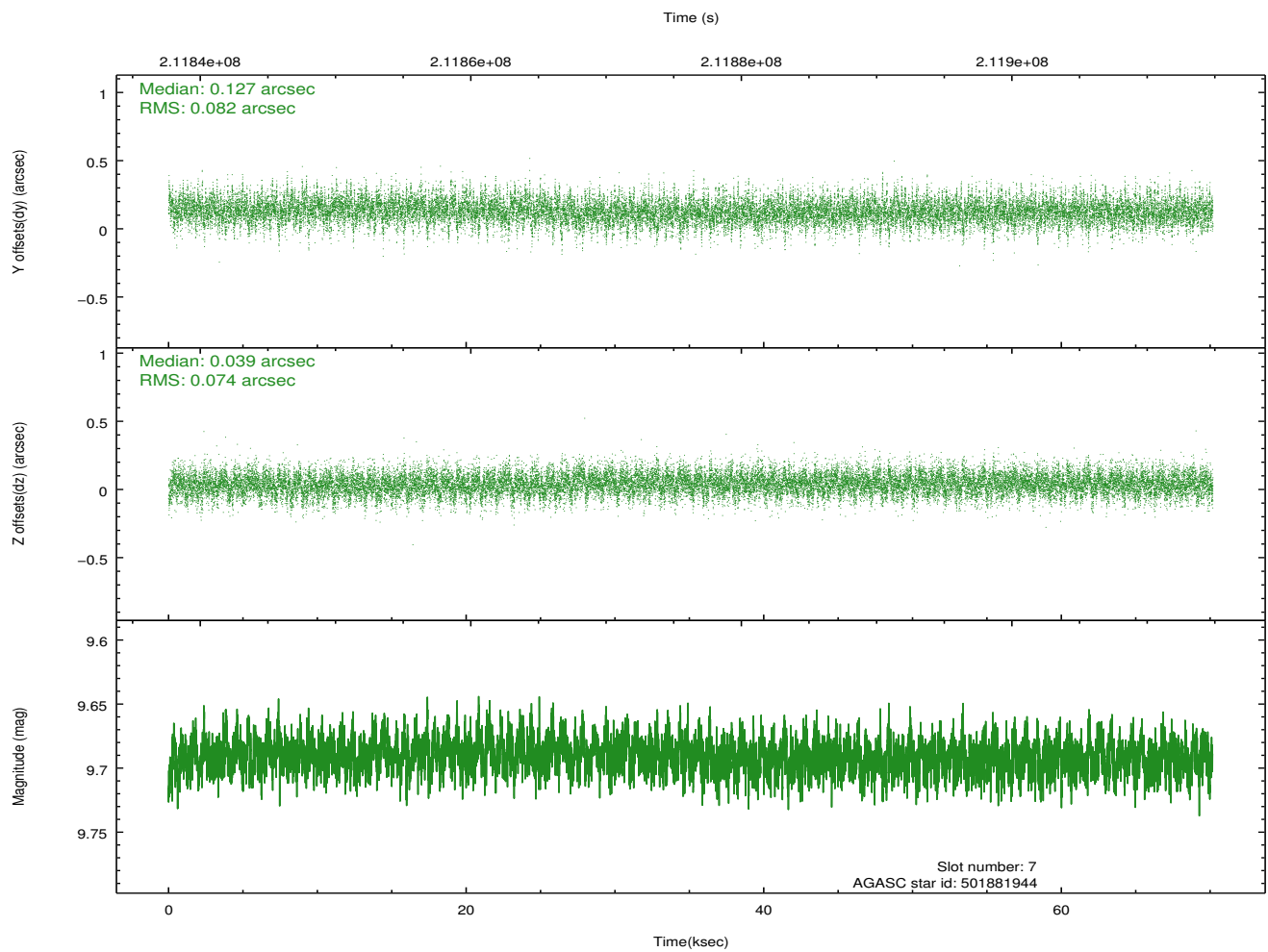
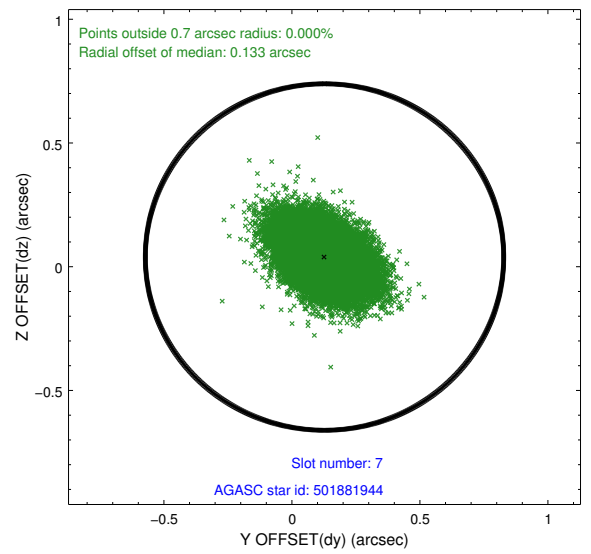
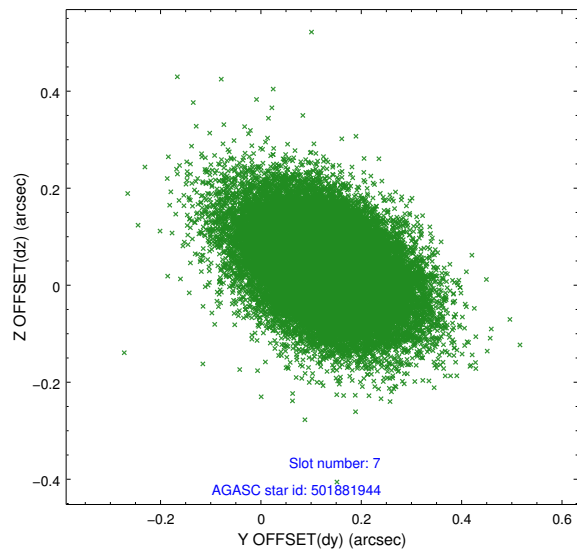
### 2.4.3 Slot 5



## 2.4.4 Slot 6

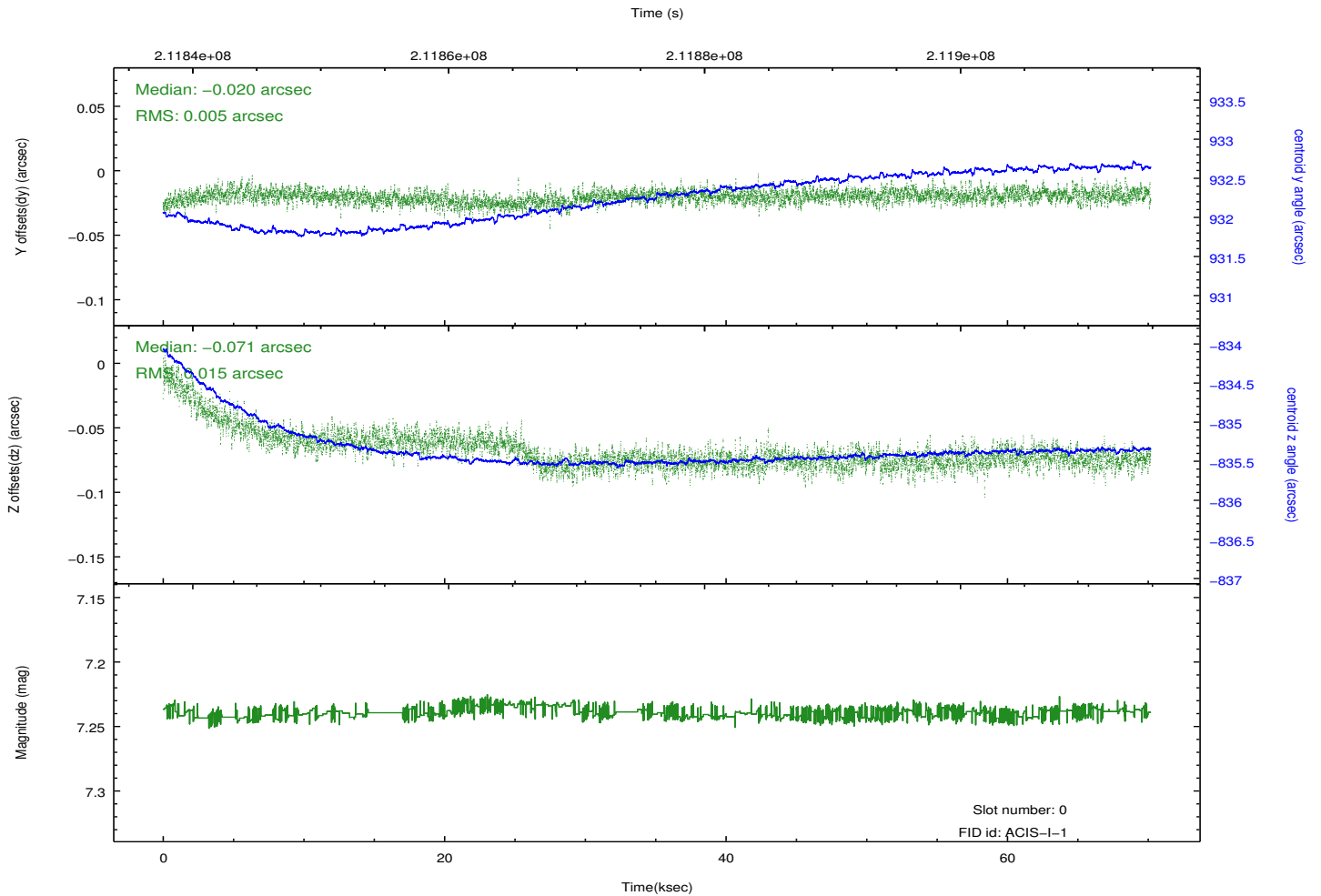
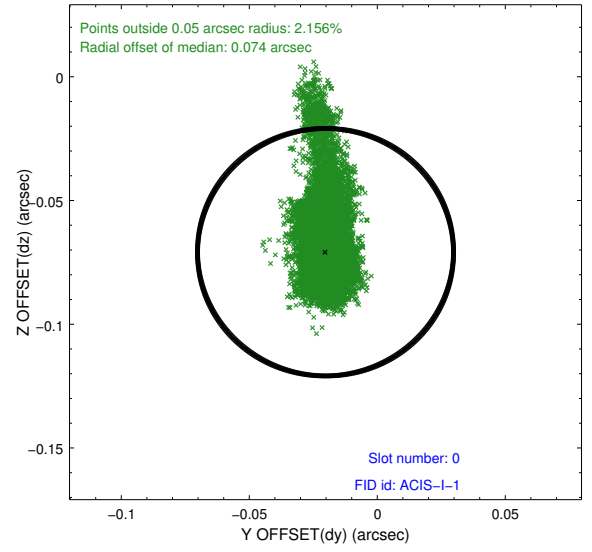
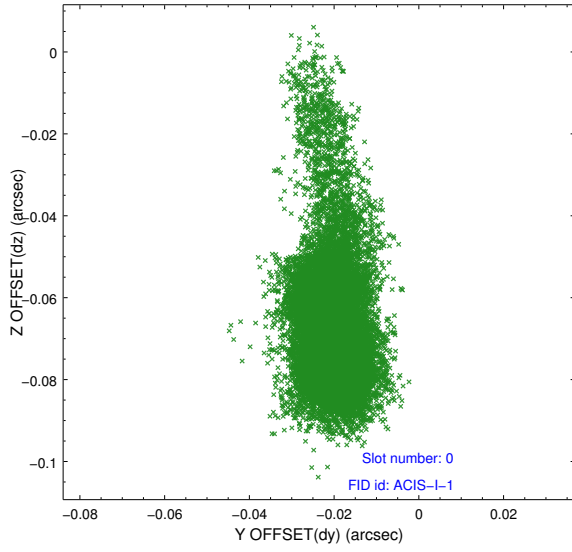


### 2.4.5 Slot 7

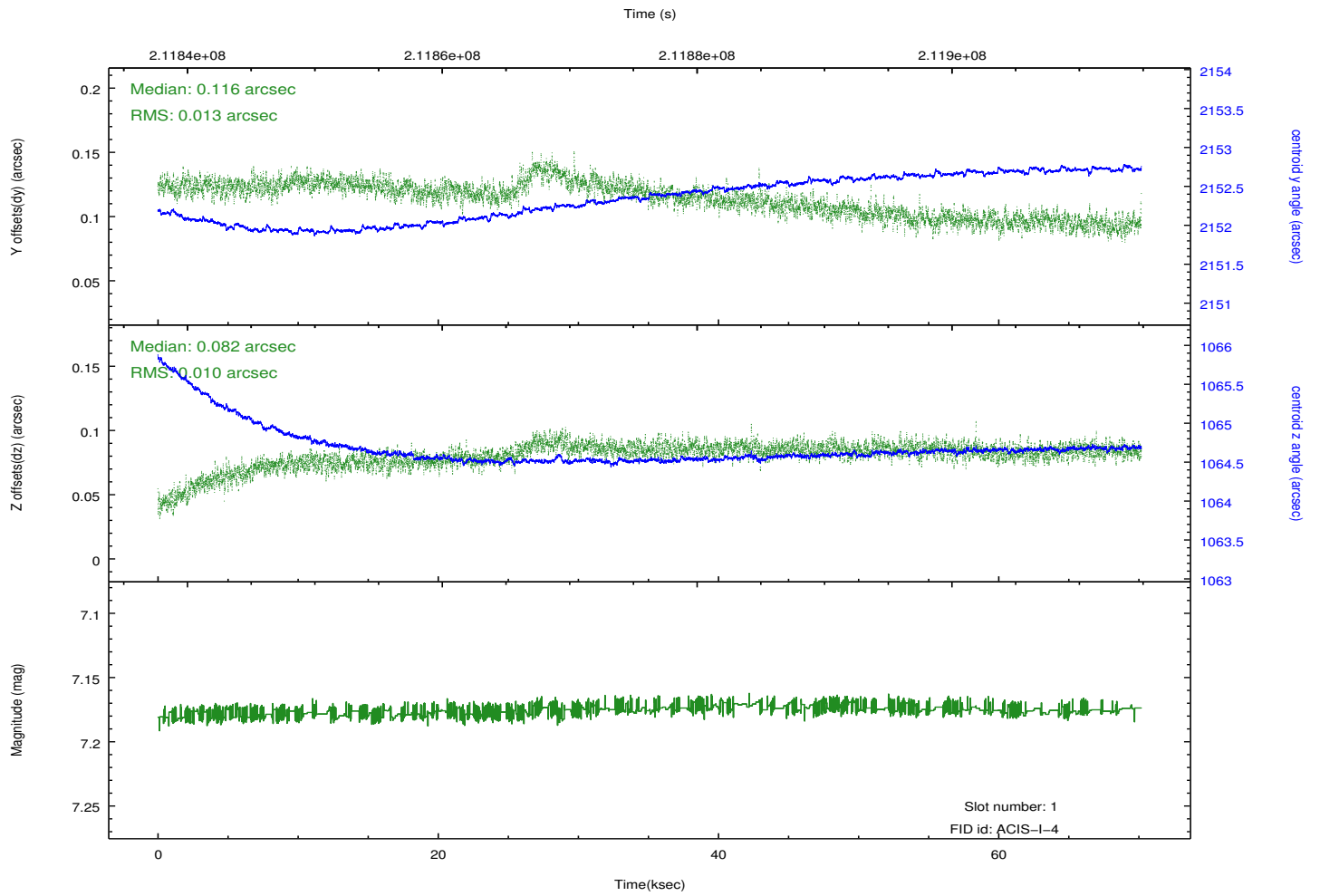
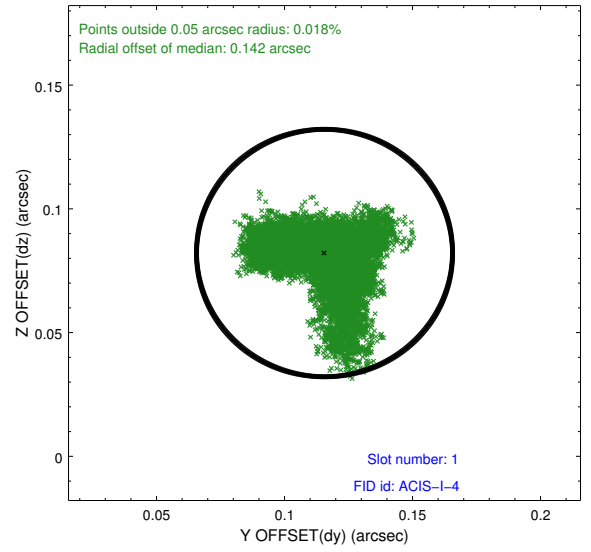
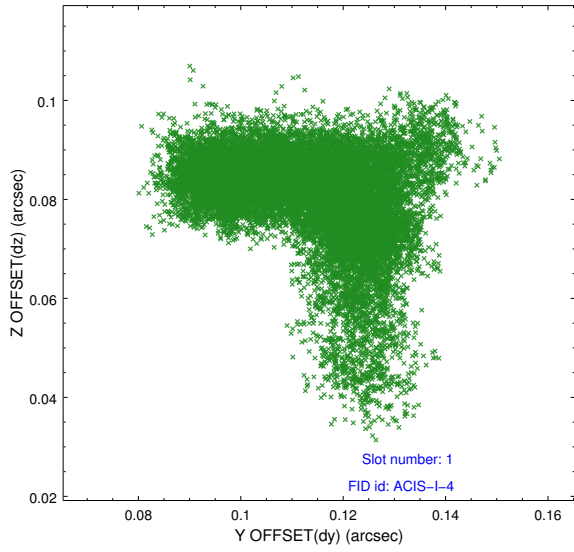


## 2.5 FID Slots

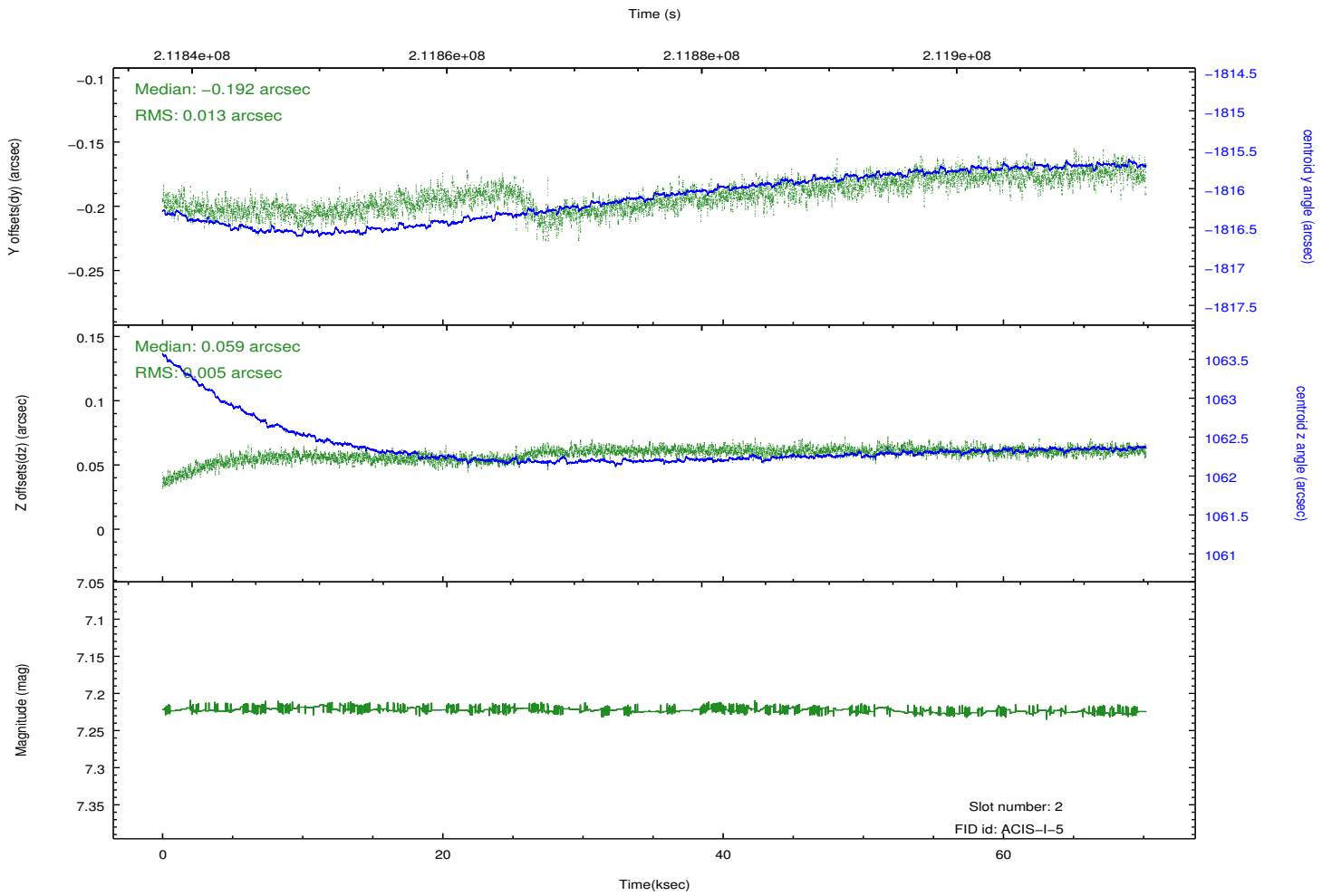
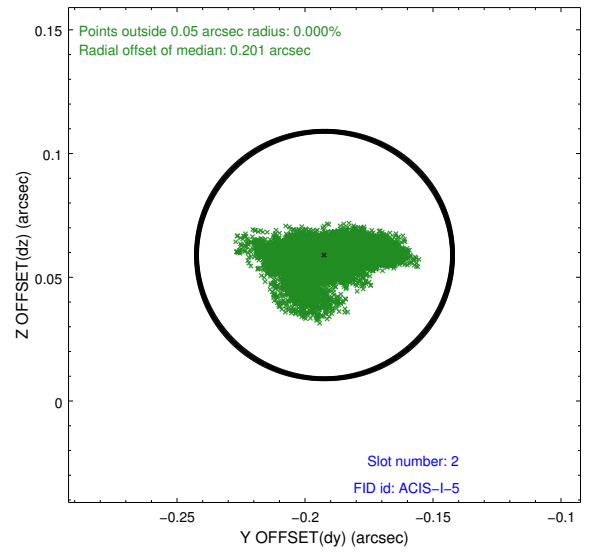
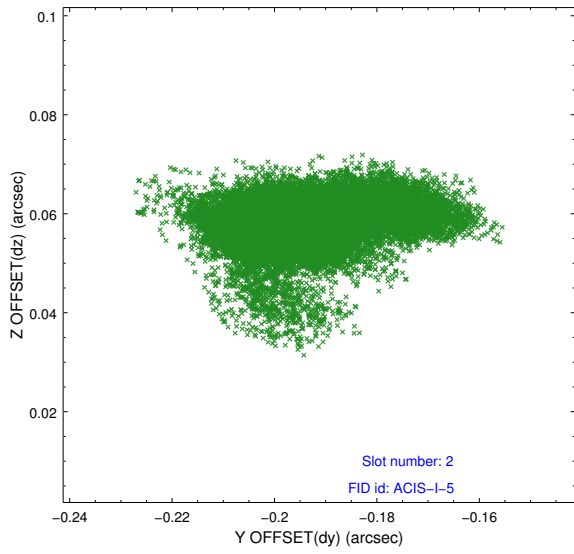
### 2.5.1 Slot 0



## 2.5.2 Slot 1



### 2.5.3 Slot 2



# A Summary

## A.1 Status

V&V Scientist	Beth Sundheim
V&V Date (YYYY-MM-DD)	2012.12.31
V&V Edition	1
V&V Disposition and Status	OK
V&V Charge Time	70.174

## A.2 Comments

Joint proposal with NOAO.

Roll preference met.