

V&V Reference Report

L2 ASCDS Version : 8.5

Observation 5355 - L2 Version 3
Chandra X-Ray Center

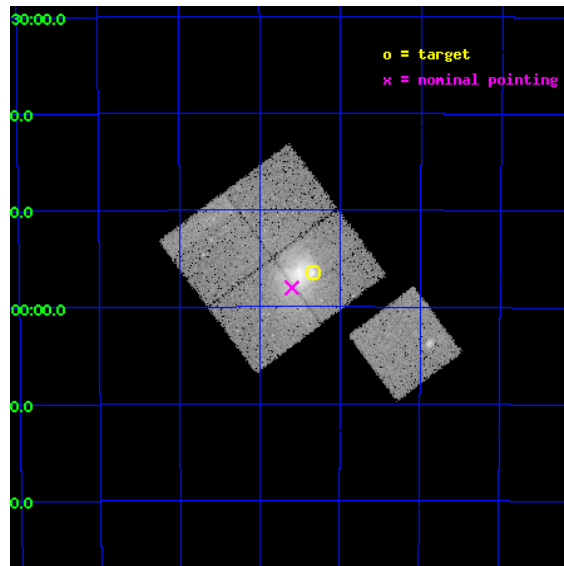
L2 Processing Date : Dec 6 2012

Contents

1	Front	2
2	OBI	3
2.1	OBI	3
2.1.1	Images	3
2.1.2	Bias	3
2.1.3	Parameters	4
2.1.4	Events	4
2.2	Compared Parameters	5
2.3	Aspect	6
2.4	Star Slots	9
2.4.1	Slot 3	9
2.4.2	Slot 4	10
2.4.3	Slot 5	11
2.4.4	Slot 6	12
2.4.5	Slot 7	13
2.5	FID Slots	14
2.5.1	Slot 0	14
2.5.2	Slot 1	15
2.5.3	Slot 2	16
A	Summary	17
A.1	Status	17
A.2	Comments	17

1 Front

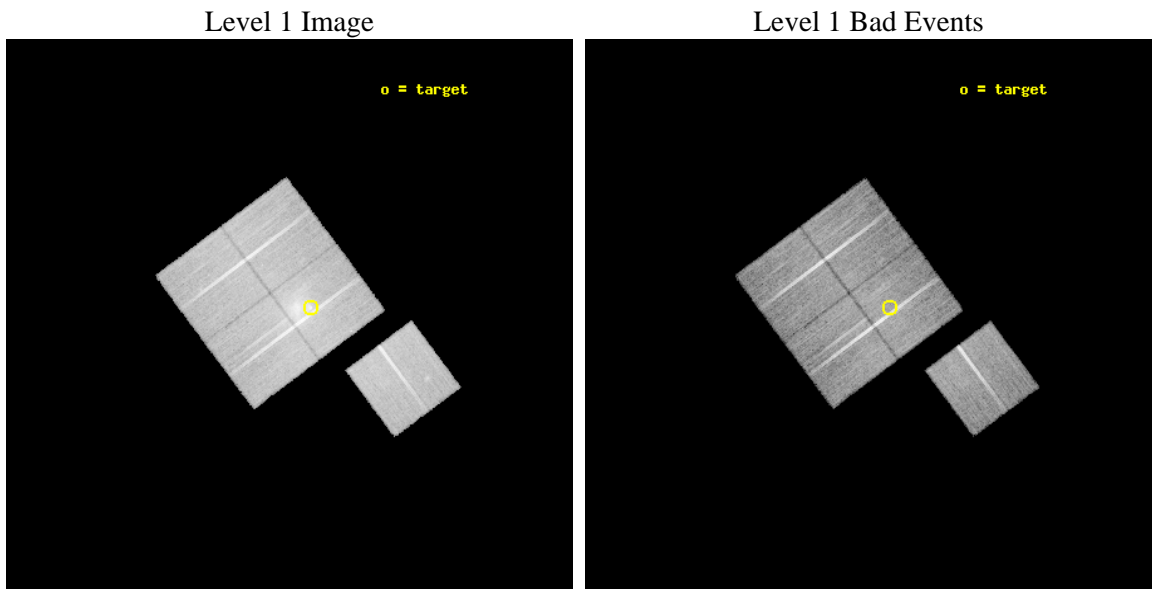
seq_num	800429	Sequence number
obs_id	5355	Observation id
title	THE MOST INTERESTING CLUSTER IN THE UNIVERSE	Proposal title
observer	Dr Maxim Markevitch	Principal investigator
object	1E0657-56	Source name
dtcycle	0	
cycle	P	events from which exps? Prim/Second/Both
ra_targ	104.5827	Observer's specified target RA [deg]
dec_targ	-55.9415	Observer's specified target Dec [deg]
ra_nom	104.64986767858	Nominal RA [deg]
dec_nom	-55.967577126165	Nominal Dec [deg]
roll_nom	143.26433673229	Nominal Roll [deg]
revision	3	Processing version of data
ontime	27772.89994657	Sum of GTIs [s]
livetime	27410.026562657	Livetime [s]
ontime0	27772.89994657	Sum of GTIs [s]
ontime1	27760.336025774	Sum of GTIs [s]
ontime2	27772.89994657	Sum of GTIs [s]
ontime3	27769.758986324	Sum of GTIs [s]
ontime6	27769.75897634	Sum of GTIs [s]
l2events	117464	Number of level 2 events



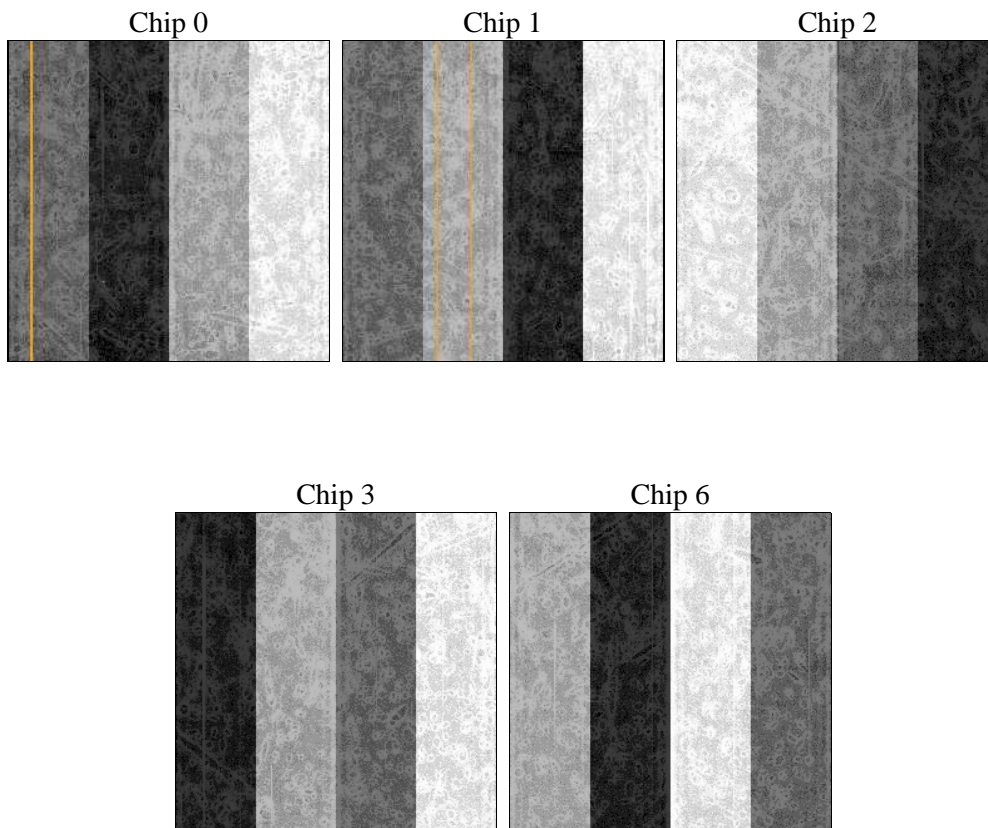
2 OBI

2.1 OBI

2.1.1 Images



2.1.2 Bias



2.1.3 Parameters

obi_num	0	Obi number	sched_exp_time	27631.081000	[s] Scheduled observation exposure time
ascdsver	8.5	Processing system revision	ontime	27772.89994657	Sum of GTIs [s]
caldbver	4.5.4	 	ontime0	27772.89994657	Sum of GTIs [s]
date	2012-12-07T01:14:40	Date and time of file creation	ontime1	27760.336025774	Sum of GTIs [s]
revision	3	Processing version of data	ontime2	27772.89994657	Sum of GTIs [s]
			ontime3	27769.758986324	Sum of GTIs [s]
			ontime6	27769.75897634	Sum of GTIs [s]
			l1events	938704	Number of level 1 events

2.1.4 Events

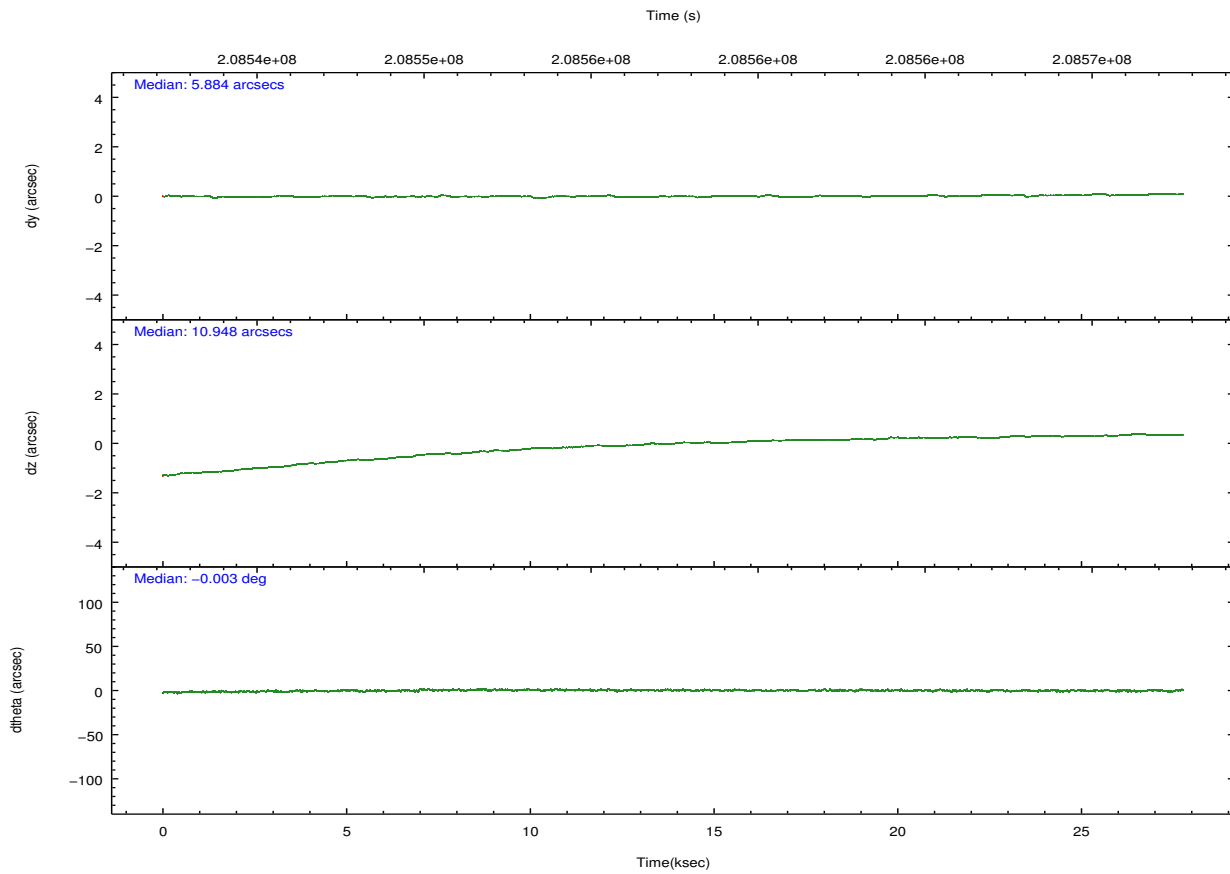
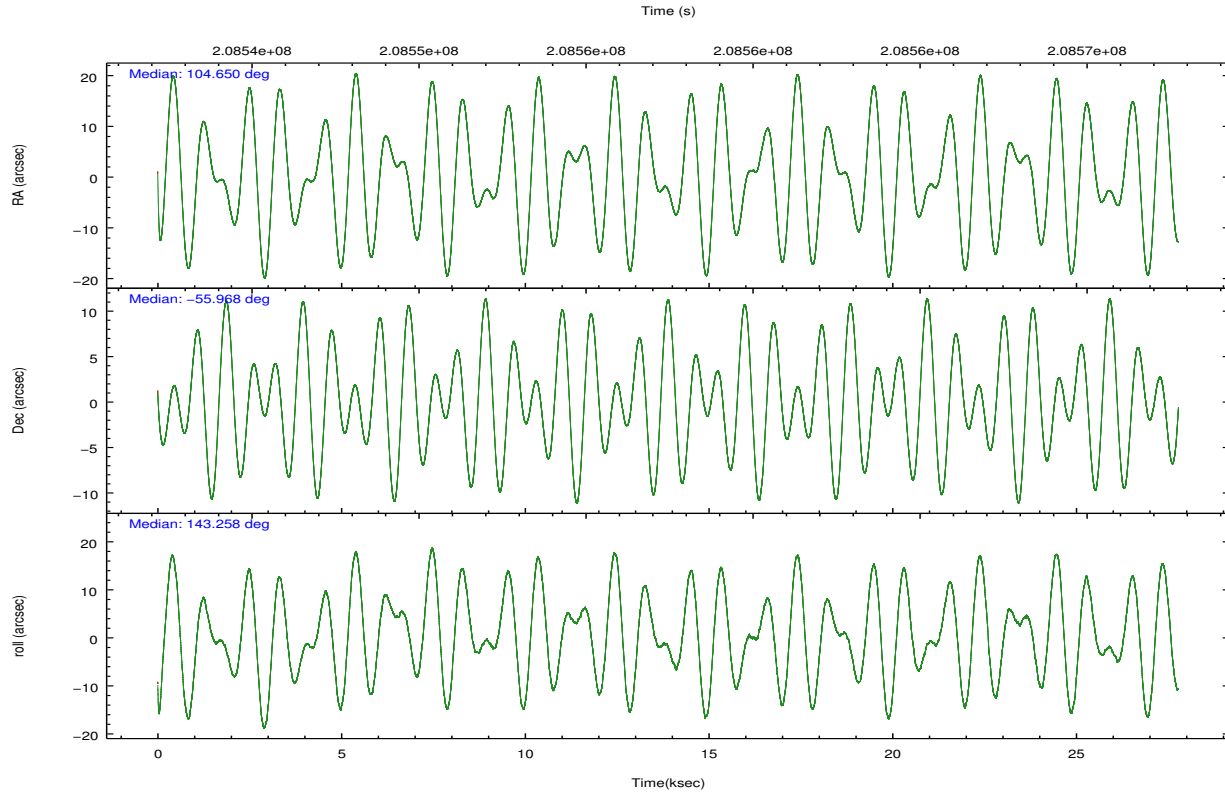
	ccd 0	ccd 1	ccd 2	ccd 3	ccd 6
level 1 events	172496	173447	220089	189543	183129
rejected events	153531	152125	169514	165899	162879
rejected %	89%	87%	77%	87%	88%

	ccd 0	ccd 1	ccd 2	ccd 3	ccd 6
grade 0 events	7915	9101	34558	12233	9022
	4%	5%	15%	6%	4%
grade 1 events	97	93	259	127	90
	0%	0%	0%	0%	0%
grade 2 events	4402	4630	7423	4415	4279
	2%	2%	3%	2%	2%
grade 3 events	2186	2331	2944	2249	2112
	1%	1%	1%	1%	1%
grade 4 events	1997	2261	2898	2226	2104
	1%	1%	1%	1%	1%
grade 5 events	6172	6618	6139	7038	7082
	3%	3%	2%	3%	3%
grade 6 events	3553	4217	4121	3617	3854
	2%	2%	1%	1%	2%
grade 7 events	146174	144196	161747	157638	154586
	84%	83%	73%	83%	84%

2.2 Compared Parameters

Parameter	Planned	Actual	Parameter	Planned	Actual
Instrument	ACIS	ACIS	Obspar format version number	7	7
Detector	ACIS-01236	ACIS-01236	Obspar file type	PREDICTED	ACTUAL
Grating	NONE	NONE	Obspar update status	NONE	UPDATED
Data mode	VFAINT	VFAINT	Number of optional ACIS chips dropped	0	0
Observation mode	POINTING	POINTING	On-chip summing requested	N	N
[deg] Pointing RA	104.698490	104.6498676785836	Subarray requested	NONE	NONE
[deg] Pointing Dec	-55.970654	-55.96757712616481	Alternating exposures requested	N	N
[deg] Pointing Roll	143.095949	143.2643367322946	[s] Primary exposure time	0.000000	3.1
[mm] SIM focus pos	-0.782348	-0.7809083437167272			
[mm] SIM defocus	0	0.001439871863259334			
[mm] SIM translation stage pos	-224.592463	-224.5962429424501			
[mm] SIM translation stage offset	-9	-8.996210060479569			
[s] Observation start time (MET)	208543712.184000	208541800.68254			
Observation start date	2004-08-10T16:47:28	2004-08-10T16:16:40			
[s] Observation end time (MET)	208571343.184000	208571574.37137			
Observation end date	2004-08-11T00:27:59	2004-08-11T00:32:54			
Read mode	TIMED	TIMED			

2.3 Aspect



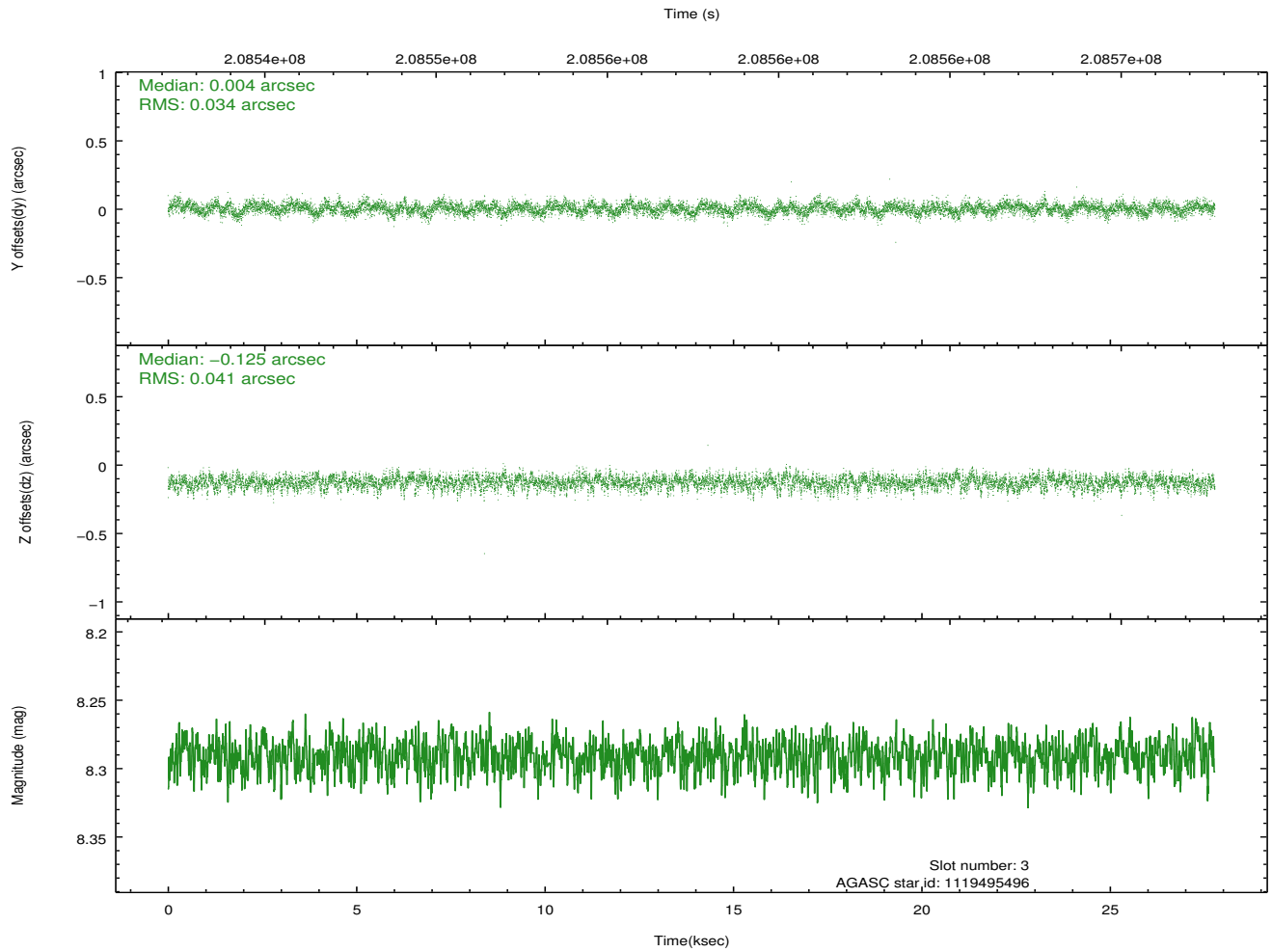
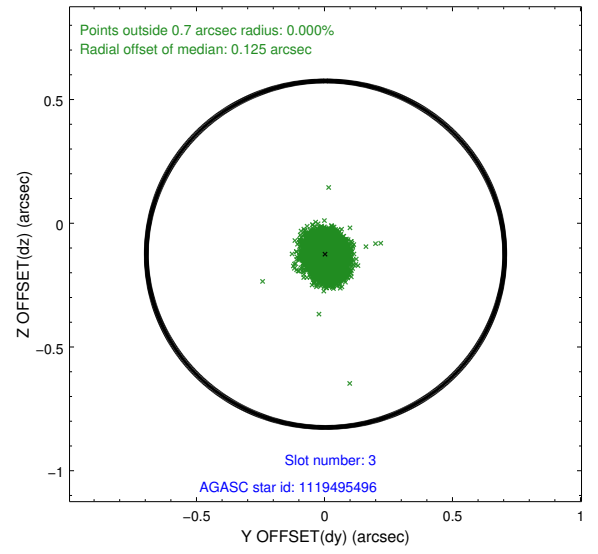
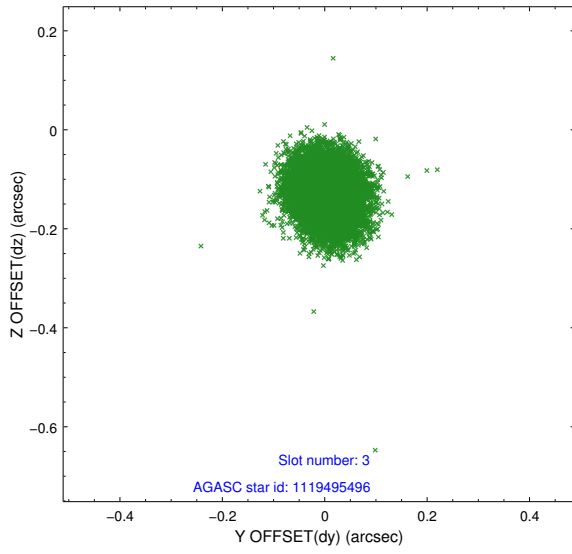
Slot Statistics

slot	status	id	mag	n_pts	med_dy	med_dz	dr1	dr2	ra	dec	mean_y	mean_z
0	FID	ACIS-I-1	7.22	6777	0.133	-0.229	0.011	0.028	0.000000	0.000000	933.80	-1019.18
1	FID	ACIS-I-4	7.14	6776	-0.015	0.120	0.011	0.023	0.000000	0.000000	2153.22	882.04
2	FID	ACIS-I-5	7.21	6777	-0.215	0.180	0.008	0.014	0.000000	0.000000	-1814.45	878.89
3	GUIDE	1119495496	8.29	13551	0.004	-0.125	0.056	0.092	104.298364	-55.915101	764.41	326.73
4	GUIDE	1119495968	7.06	13553	-0.078	0.057	0.060	0.094	105.873528	-55.948238	-1857.19	-1470.88
5	GUIDE	1119496704	7.85	13547	0.096	0.083	0.068	0.109	104.368364	-55.667750	1190.06	-468.02
6	GUIDE	1119500592	8.70	13552	0.046	0.086	0.084	0.143	105.814889	-55.642715	-1114.90	-2291.30
7	GUIDE	1120026344	6.71	13552	-0.070	-0.093	0.062	0.103	104.651539	-56.394853	-842.29	1277.28

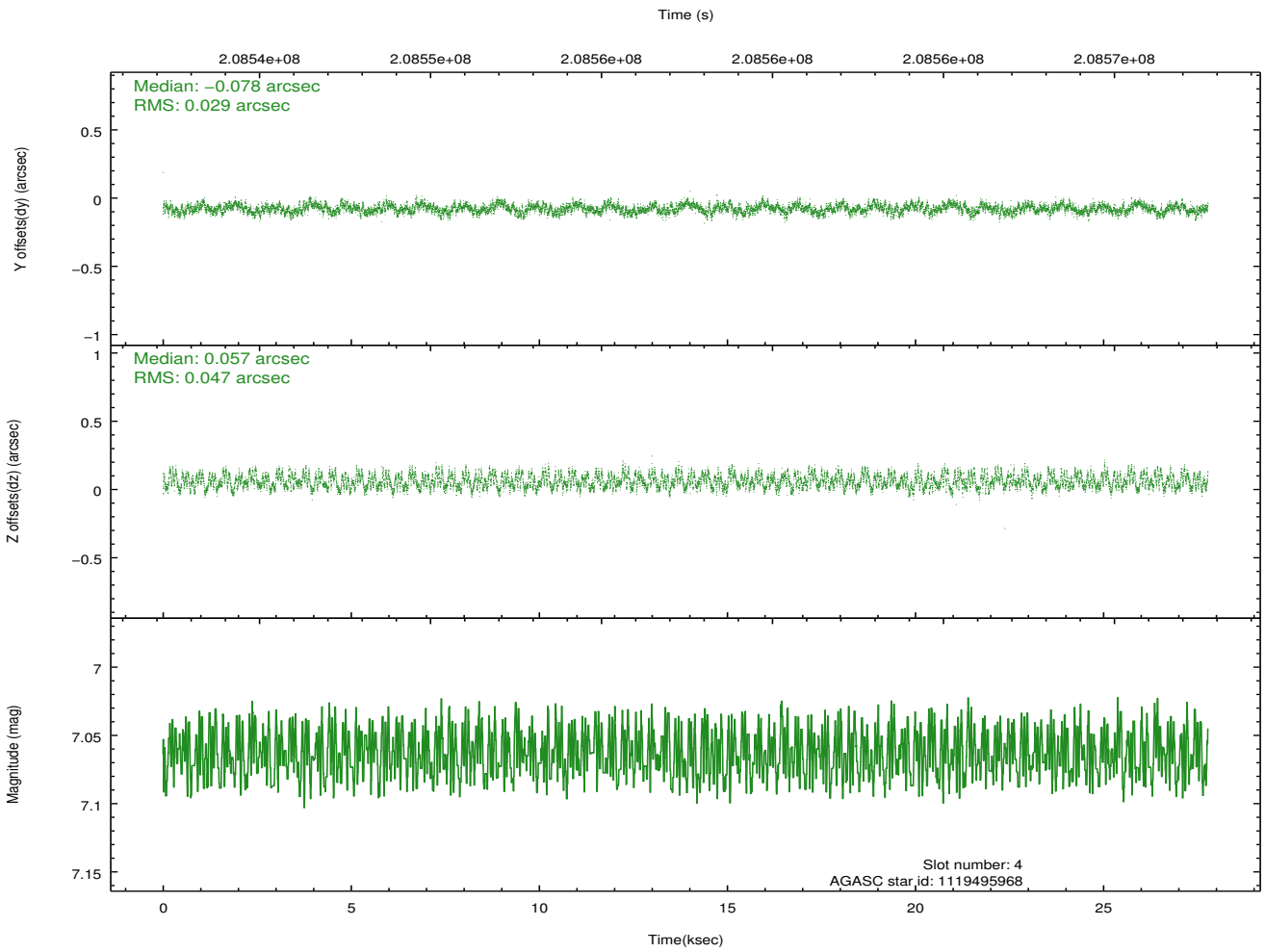
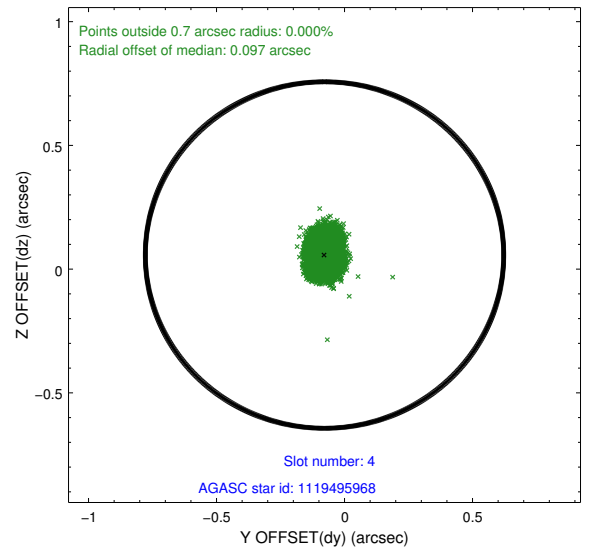
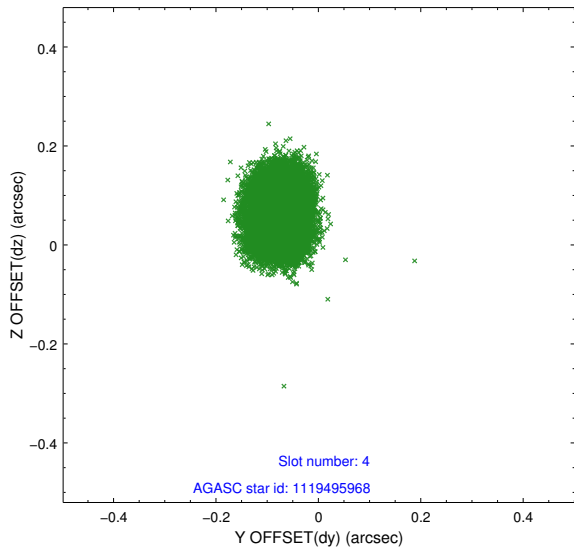
∞

2.4 Star Slots

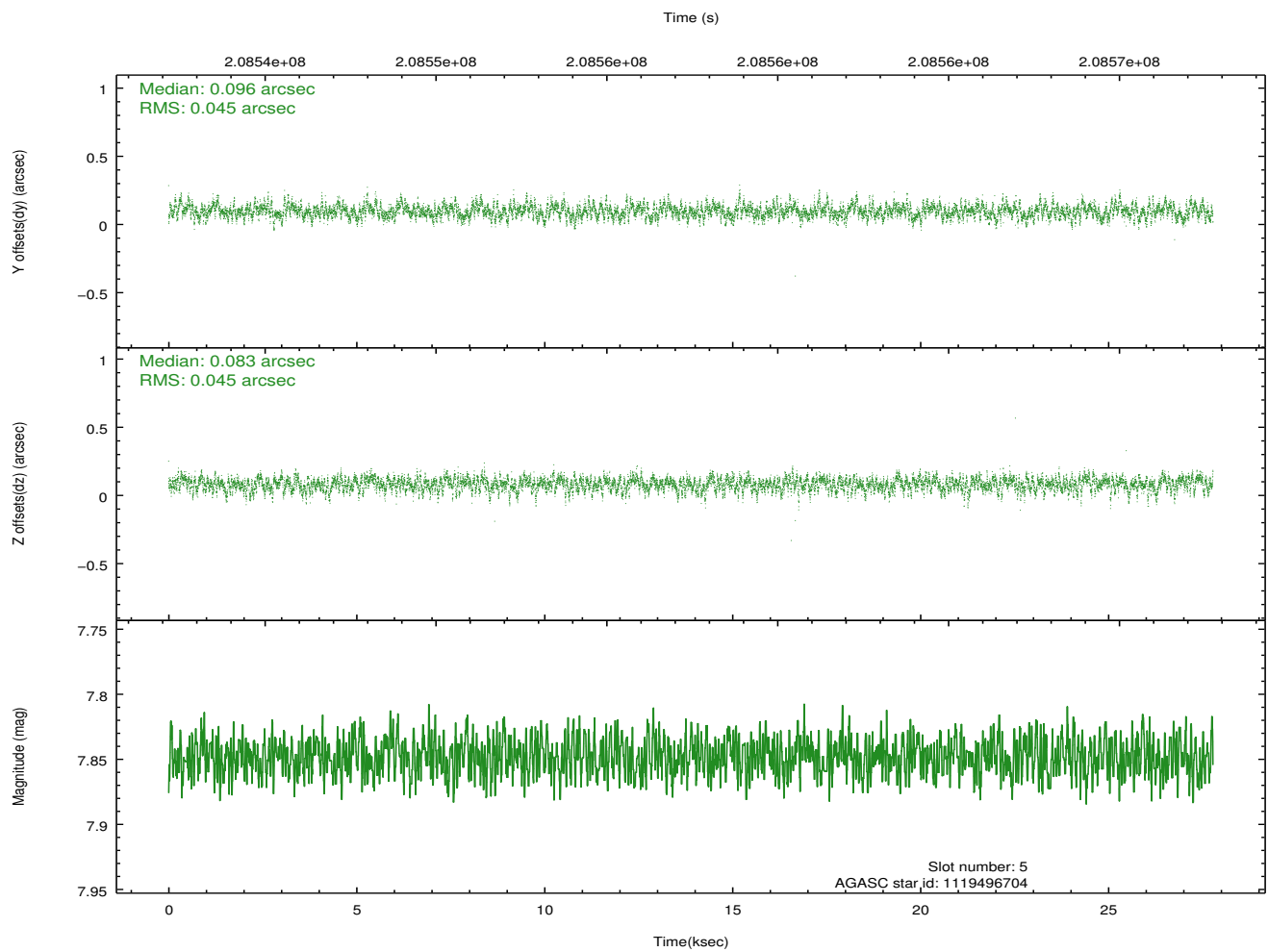
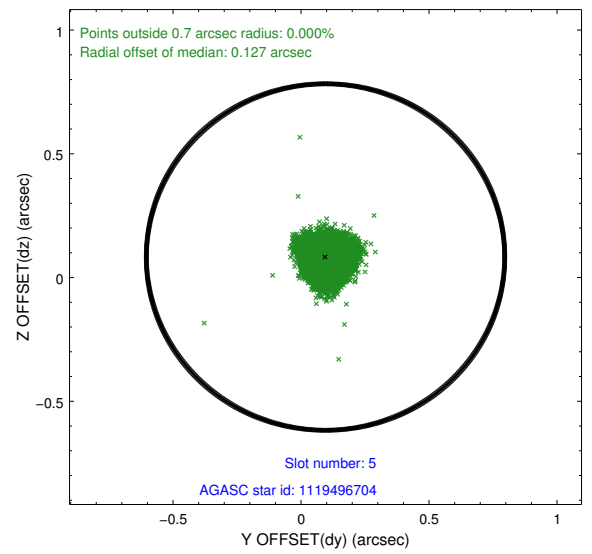
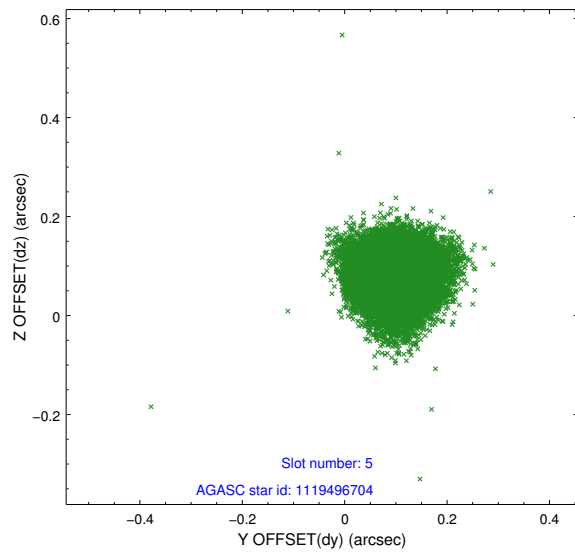
2.4.1 Slot 3



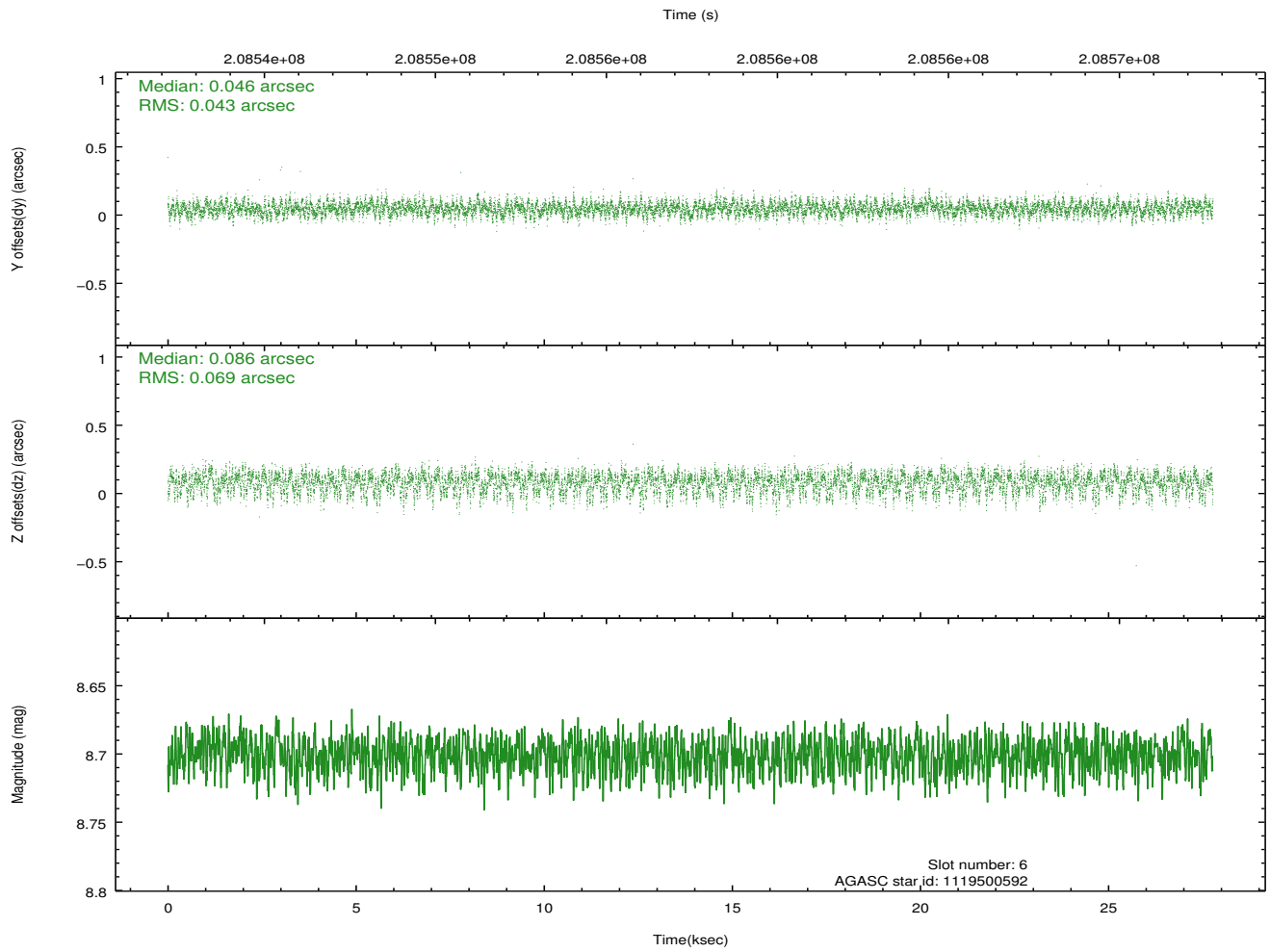
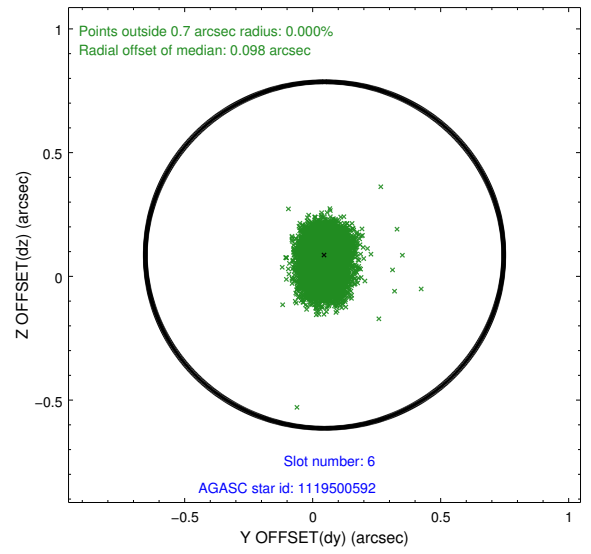
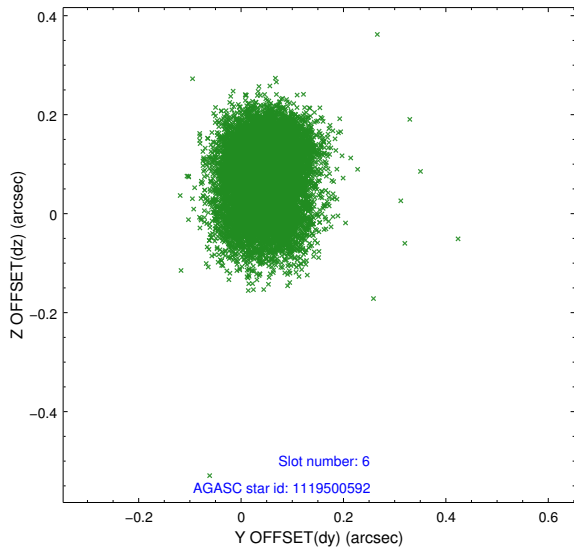
2.4.2 Slot 4



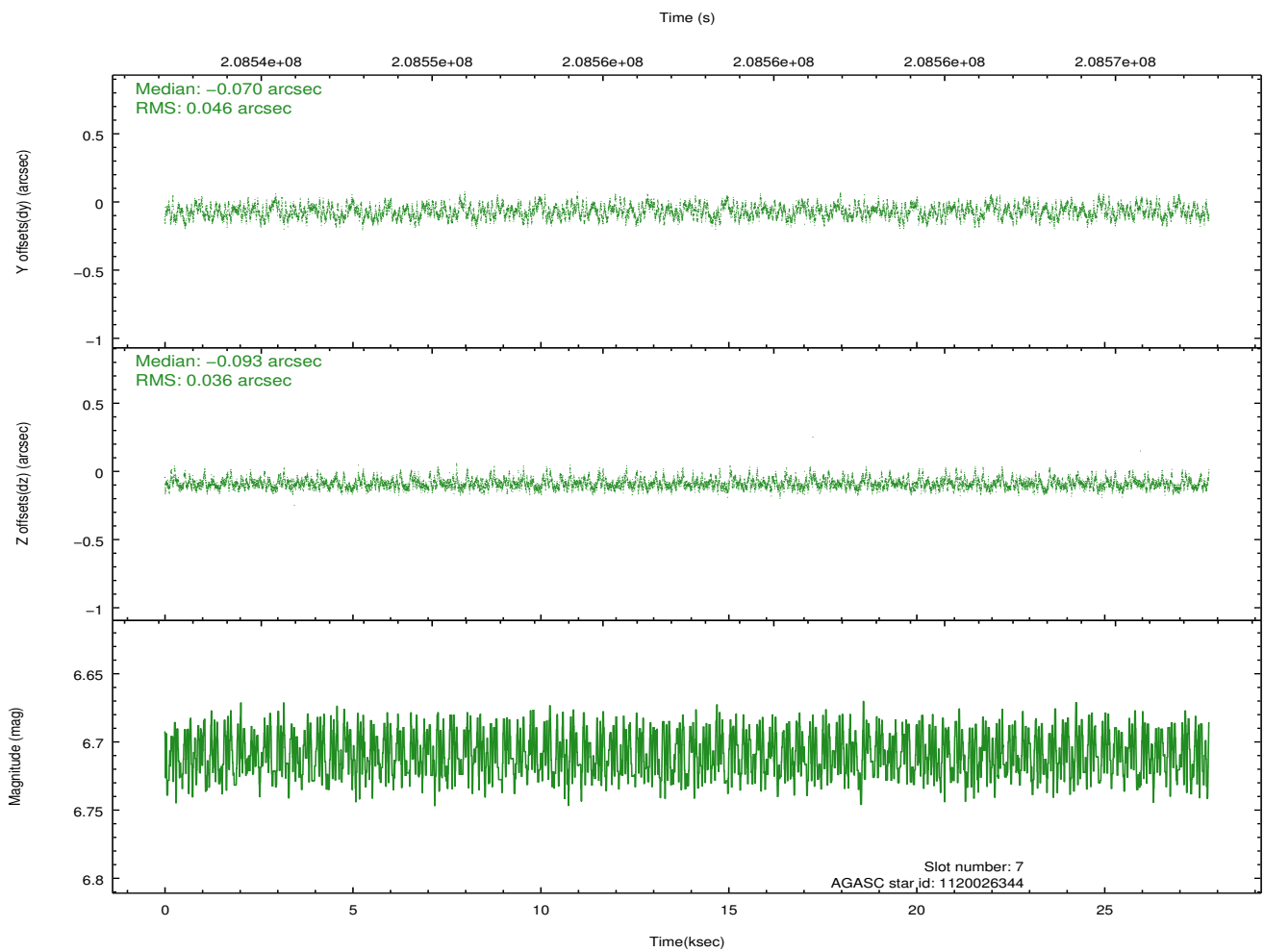
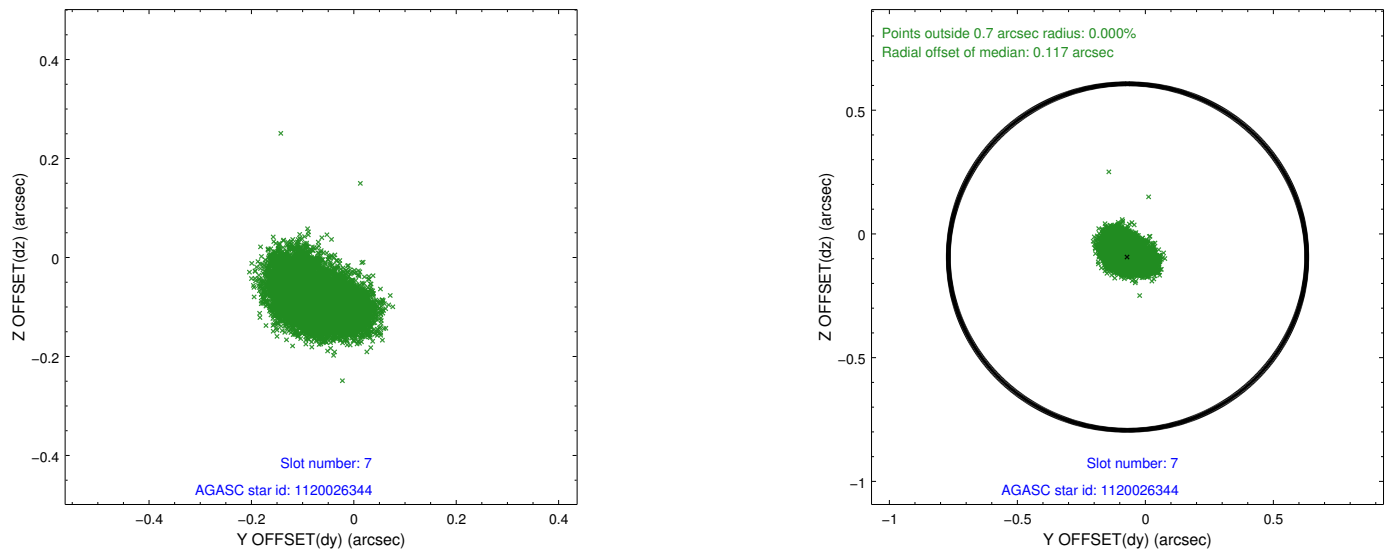
2.4.3 Slot 5



2.4.4 Slot 6

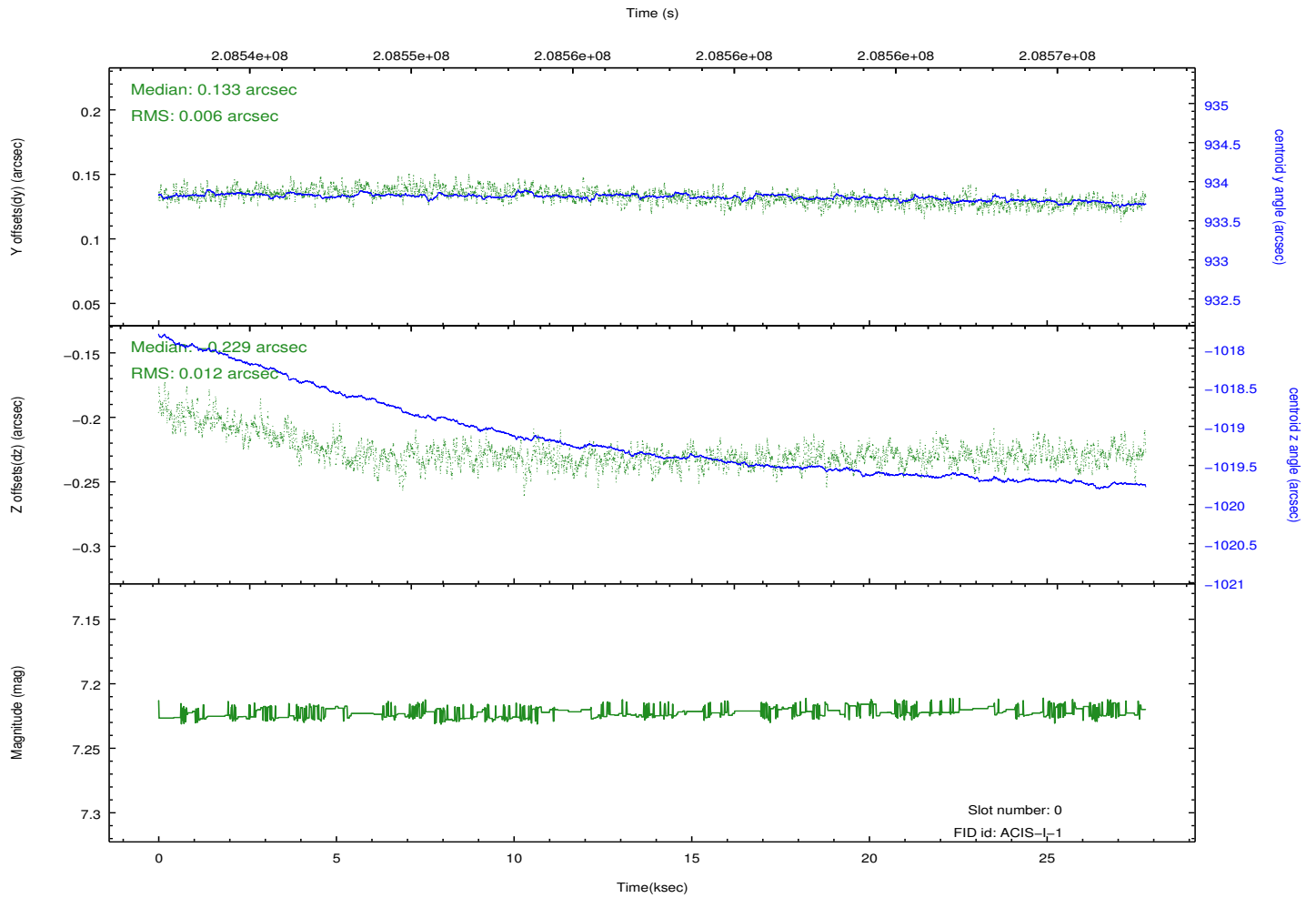
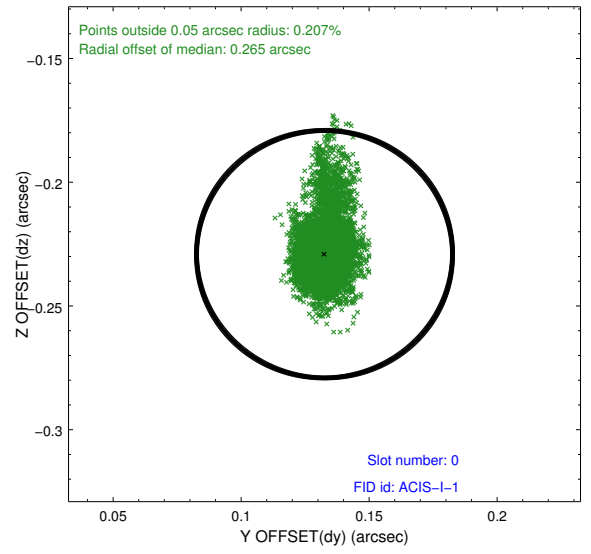
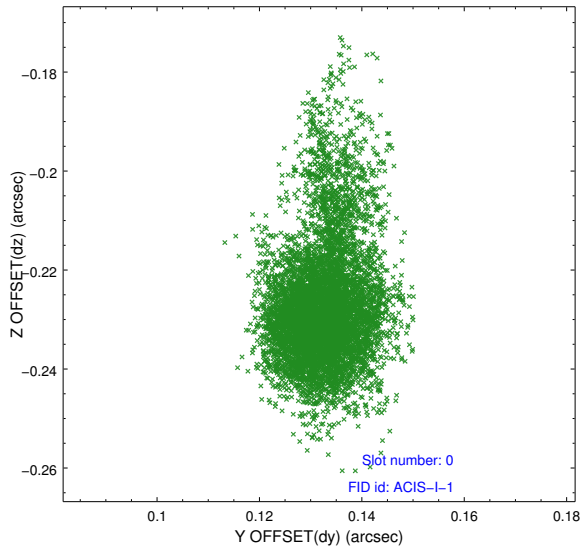


2.4.5 Slot 7

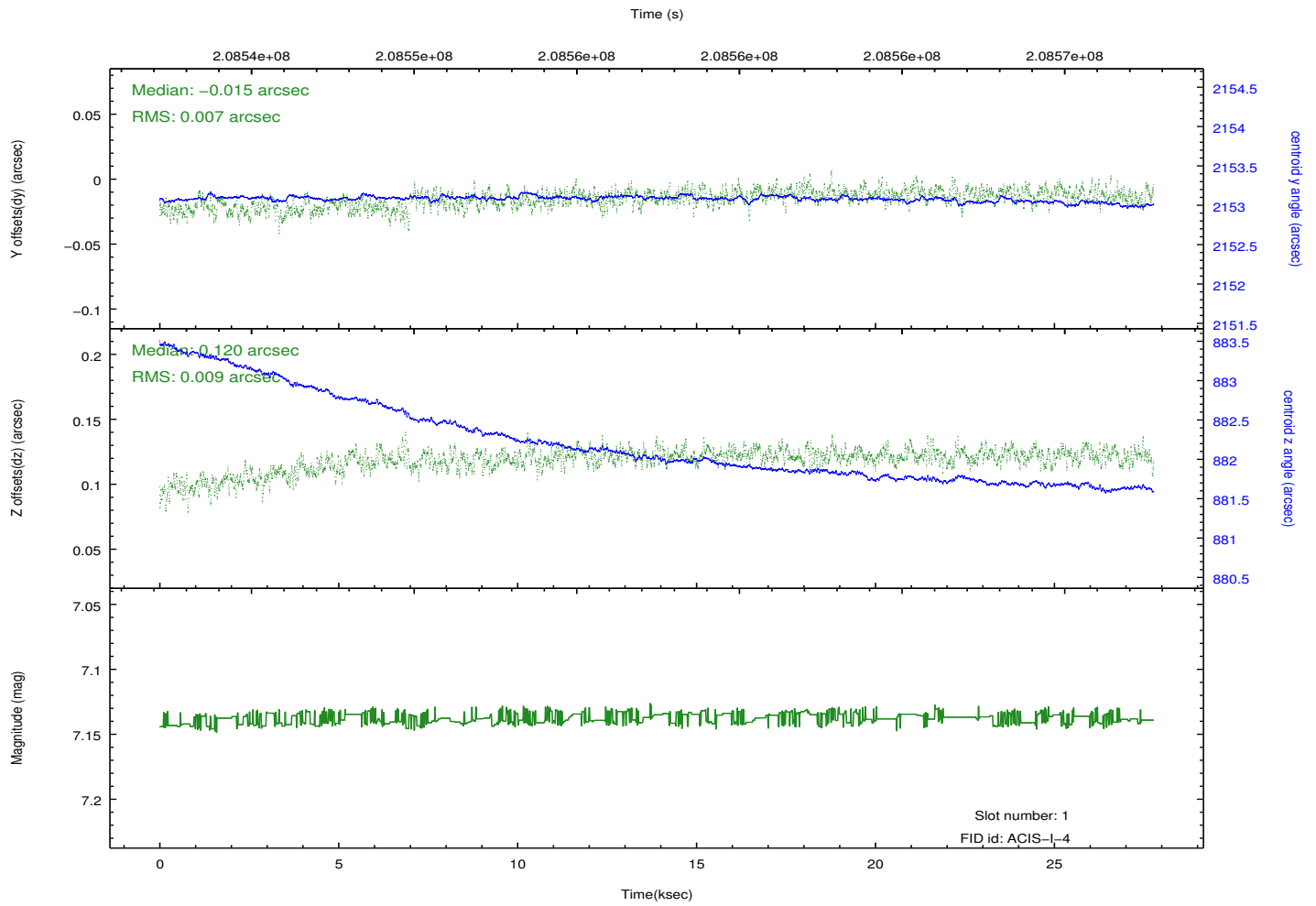
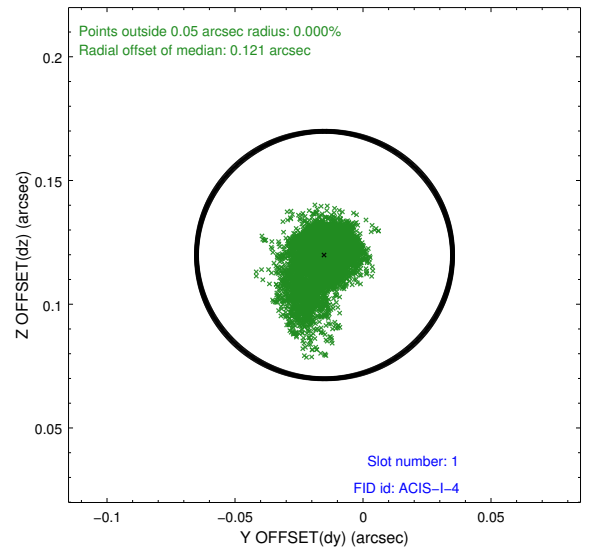
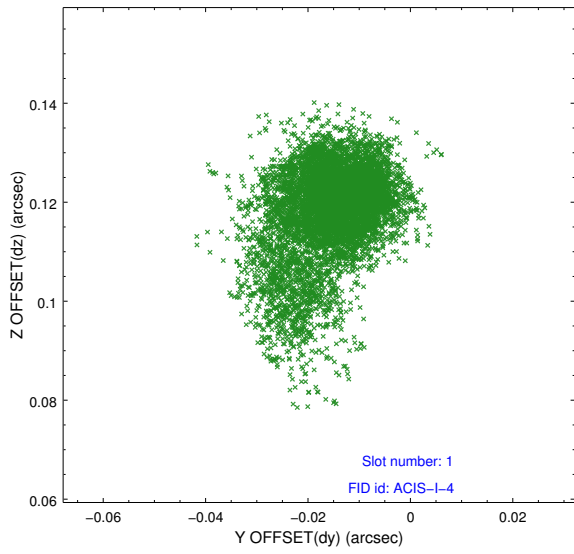


2.5 FID Slots

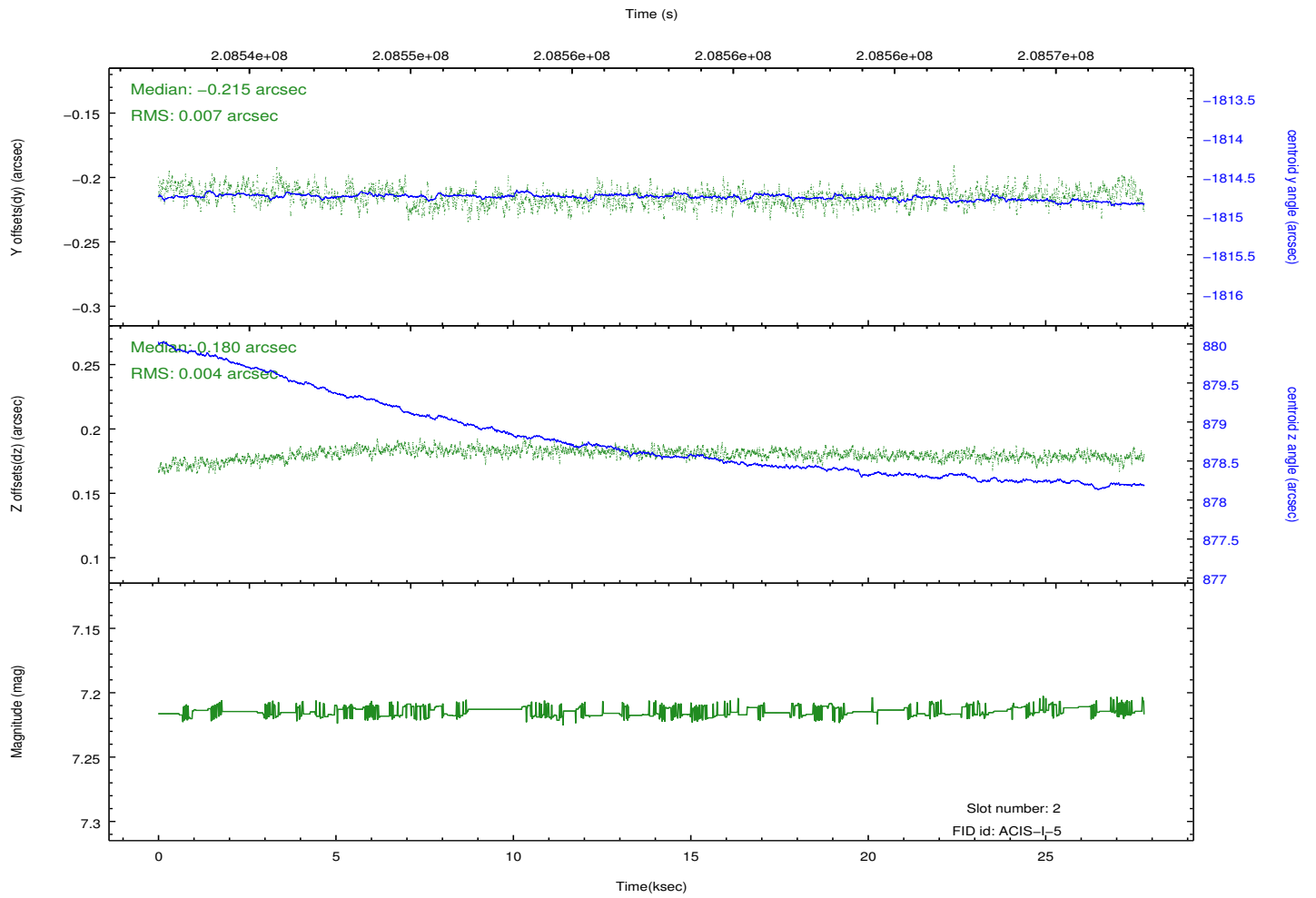
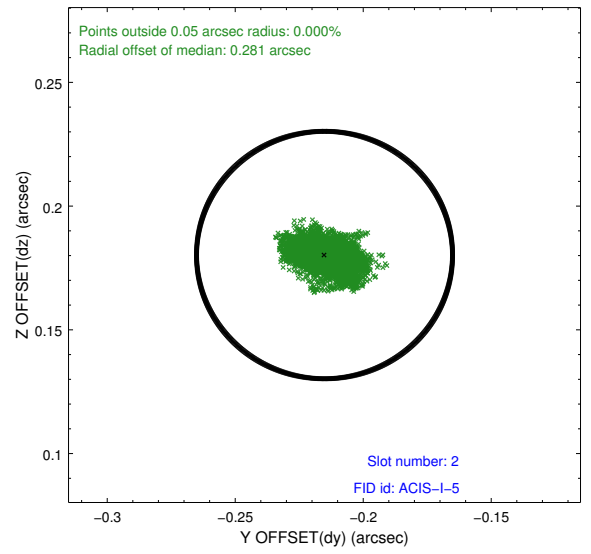
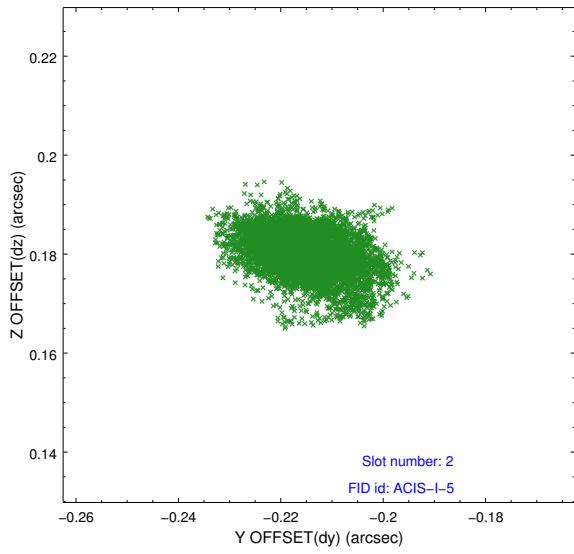
2.5.1 Slot 0



2.5.2 Slot 1



2.5.3 Slot 2



A Summary

A.1 Status

V&V Scientist	Beth Sundheim
V&V Date (YYYY-MM-DD)	2012.12.14
V&V Edition	1
V&V Disposition and Status	OK
V&V Charge Time	27.772

A.2 Comments