

V&V Reference Report

L2 ASCDS Version : 8.5.1.1

Observation 5405 - L2 Version 3
Chandra X-Ray Center

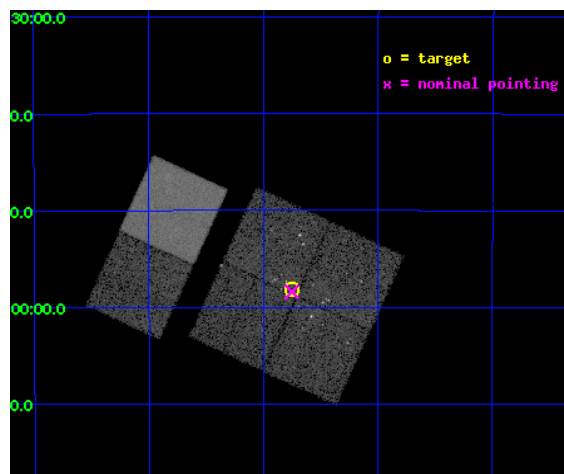
L2 Processing Date : Dec 27 2012

Contents

1	Front	2
2	OBI	3
2.1	OBI	3
2.1.1	Images	3
2.1.2	Bias	3
2.1.3	Parameters	4
2.1.4	Events	4
2.2	Compared Parameters	5
2.3	Aspect	6
2.4	Star Slots	9
2.4.1	Slot 3	9
2.4.2	Slot 4	10
2.4.3	Slot 5	11
2.4.4	Slot 6	12
2.4.5	Slot 7	13
2.5	FID Slots	14
2.5.1	Slot 0	14
2.5.2	Slot 1	15
2.5.3	Slot 2	16
A	Summary	17
A.1	Status	17
A.2	Comments	17

1 Front

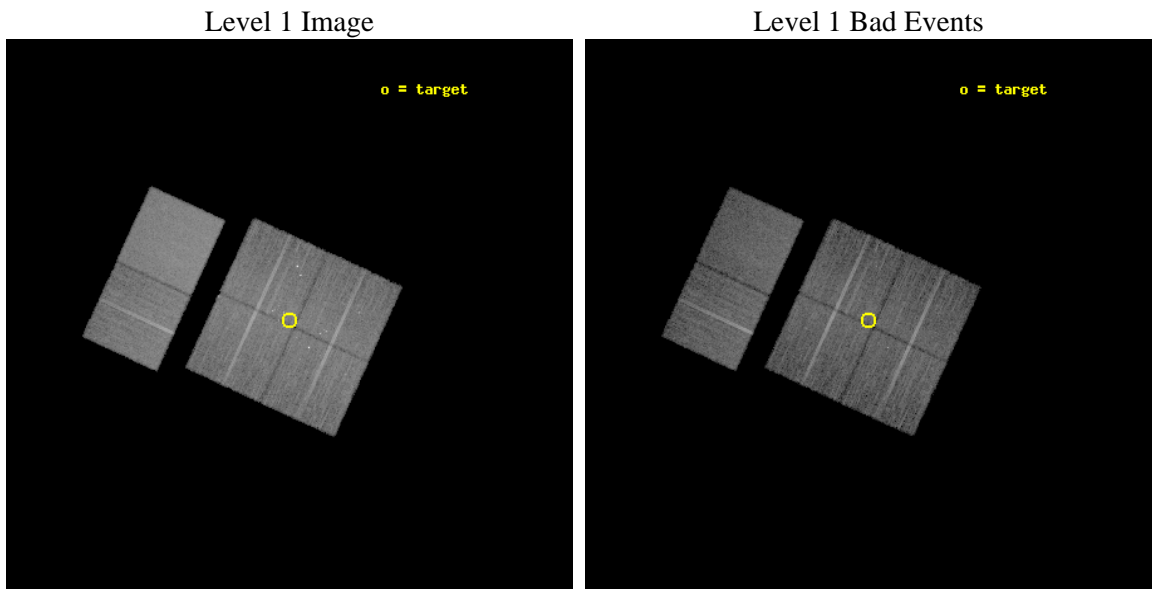
seq_num	200339	Sequence number
obs_id	5405	Observation id
title	Simultaneous X-ray and Radio Monitoring of YSO Activity in the Coronet Cluster	Proposal title
observer	Dr Jan Forbrich	Principal investigator
object	Coronet Cluster	Source name
dtycle	0	
cycle	P	events from which exps? Prim/Second/Both
ra_targ	285.4375	Observer's specified target RA [deg]
dec_targ	-36.969167	Observer's specified target Dec [deg]
ra_nom	285.43770591653	Nominal RA [deg]
dec_nom	-36.973804211924	Nominal Dec [deg]
roll_nom	294.69013084241	Nominal Roll [deg]
revision	3	Processing version of data
ontime	15174.399943471	Sum of GTIs [s]
livetime	14982.25255446	Livetime [s]
ontime0	15174.399943471	Sum of GTIs [s]
ontime1	15174.399943471	Sum of GTIs [s]
ontime2	15174.399943471	Sum of GTIs [s]
ontime3	15174.399943471	Sum of GTIs [s]
ontime6	15174.399943471	Sum of GTIs [s]
ontime7	15174.399943471	Sum of GTIs [s]
l2events	124826	Number of level 2 events



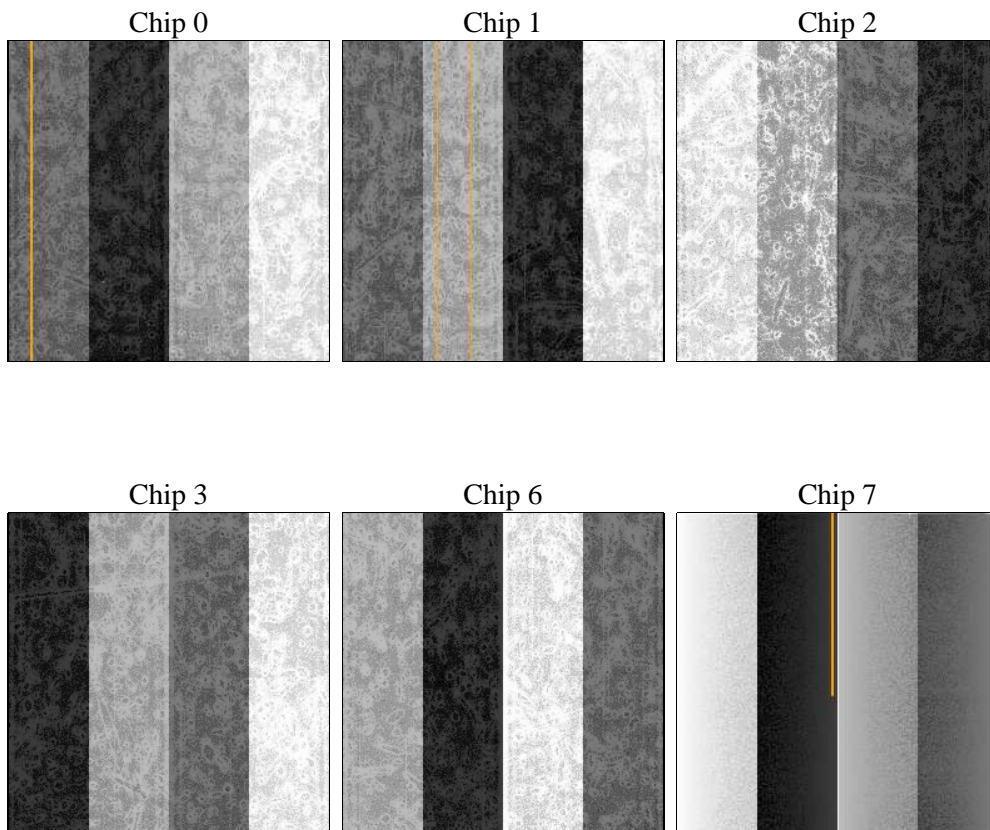
2 OBI

2.1 OBI

2.1.1 Images



2.1.2 Bias



2.1.3 Parameters

obi_num	0	Obi number	sched_exp_time	15000.000000	[s] Scheduled observation exposure time
ascdsver	8.5.1.1	Processing system revision	ontime	15174.399943471	Sum of GTIs [s]
caldsver	4.5.5	 	ontime0	15174.399943471	Sum of GTIs [s]
date	2012-12-27T04:28:08	Date and time of file creation	ontime1	15174.399943471	Sum of GTIs [s]
revision	3	Processing version of data	ontime2	15174.399943471	Sum of GTIs [s]
			ontime3	15174.399943471	Sum of GTIs [s]
			ontime6	15174.399943471	Sum of GTIs [s]
			ontime7	15174.399943471	Sum of GTIs [s]
			l1events	695684	Number of level 1 events

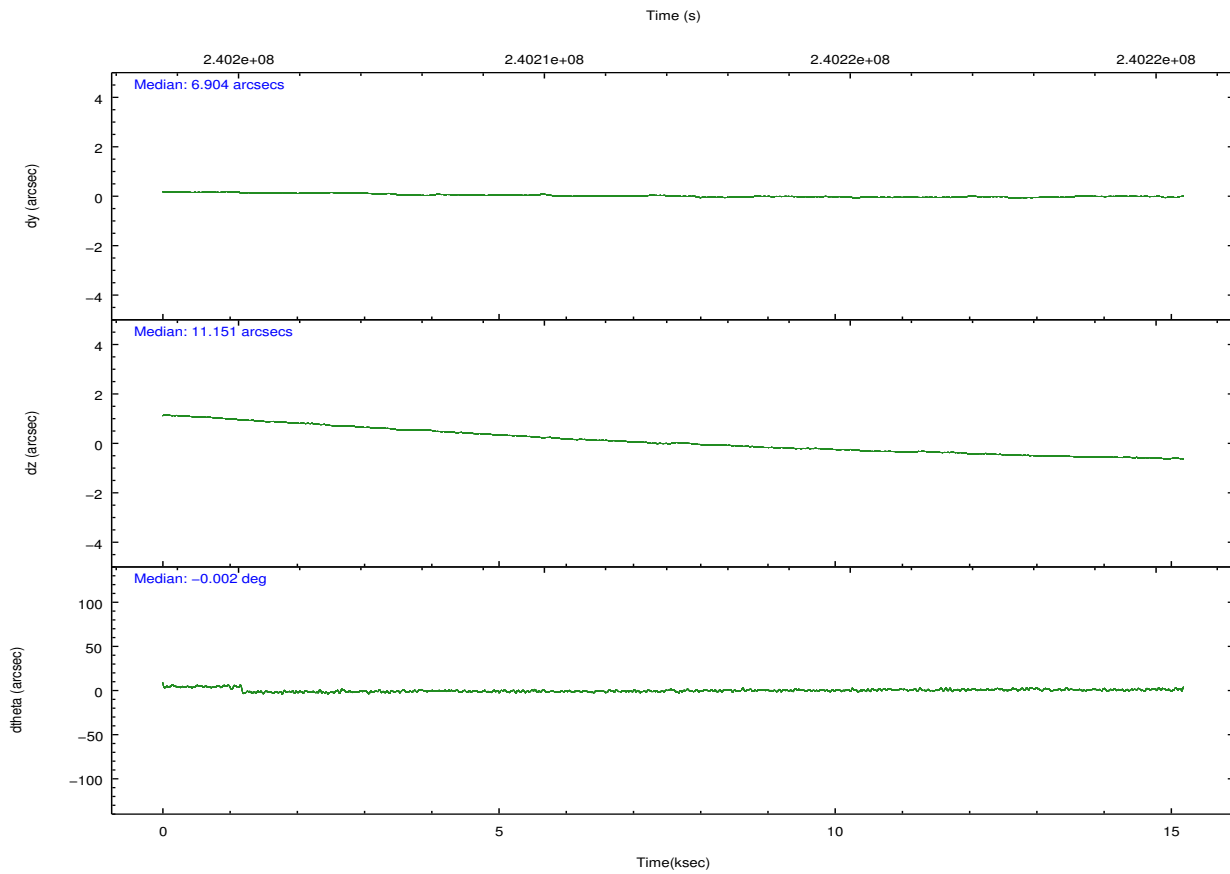
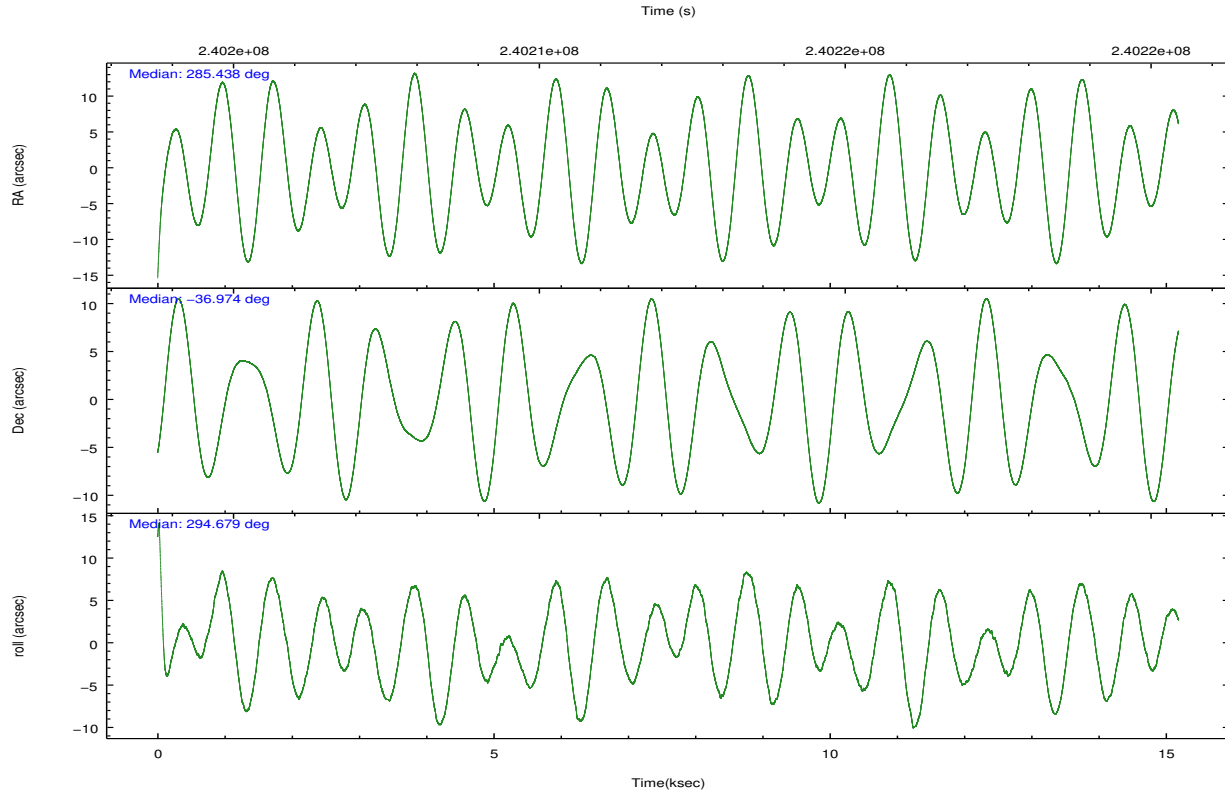
2.1.4 Events

	ccd 0	ccd 1	ccd 2	ccd 3	ccd 6	ccd 7		ccd 0	ccd 1	ccd 2	ccd 3	ccd 6	ccd 7
level 1 events	108420	104356	108004	110412	113016	151476	grade 0 events	8547	6430	5685	8675	4916	5360
rejected events	91677	89299	95177	93727	100081	90018		7%	6%	5%	7%	4%	3%
rejected %	84%	85%	88%	84%	88%	59%	grade 1 events	203	63	74	124	63	160
								0%	0%	0%	0%	0%	0%
							grade 2 events	3188	3156	2622	2899	2781	12258
								2%	3%	2%	2%	2%	8%
							grade 3 events	1397	1379	1238	1417	1323	5327
								1%	1%	1%	1%	1%	3%
							grade 4 events	1310	1419	1205	1391	1256	5422
								1%	1%	1%	1%	1%	3%
							grade 5 events	4556	4778	4244	4936	5438	14418
								4%	4%	3%	4%	4%	9%
							grade 6 events	2423	2765	2167	2416	2744	33496
								2%	2%	2%	2%	2%	22%
							grade 7 events	86796	84366	90769	88554	94495	75035
								80%	80%	84%	80%	83%	49%

2.2 Compared Parameters

Parameter	Planned	Actual	Parameter	Planned	Actual
Instrument	ACIS	ACIS	Obspar format version number	7	7
Detector	ACIS-012367	ACIS-012367	Obspar file type	PREDICTED	ACTUAL
Grating	NONE	NONE	Obspar update status	NONE	UPDATED
Data mode	FAINT	FAINT	Number of optional ACIS chips dropped	0	0
Observation mode	POINTING	POINTING	On-chip summing requested	N	N
[deg] Pointing RA	285.409628	285.4377059165265	Subarray requested	NONE	NONE
[deg] Pointing Dec	-36.958052	-36.97380421192354	Alternating exposures requested	N	N
[deg] Pointing Roll	294.464539	294.6901308424102	[s] Primary exposure time	0.000000	3.2
[mm] SIM focus pos	-0.782348	-0.7823481983384333			
[mm] SIM defocus	0	1.724155329618782e-08			
[mm] SIM translation stage pos	-233.592463	-233.5874344608287			
[mm] SIM translation stage offset	0	-0.005018542100998502			
[s] Observation start time (MET)	240204692.184000	240203577.02611			
Observation start date	2005-08-12T03:30:28	2005-08-12T03:12:57			
[s] Observation end time (MET)	240219692.184000	240220497.21439			
Observation end date	2005-08-12T07:40:28	2005-08-12T07:54:57			
Read mode	TIMED	TIMED			

2.3 Aspect

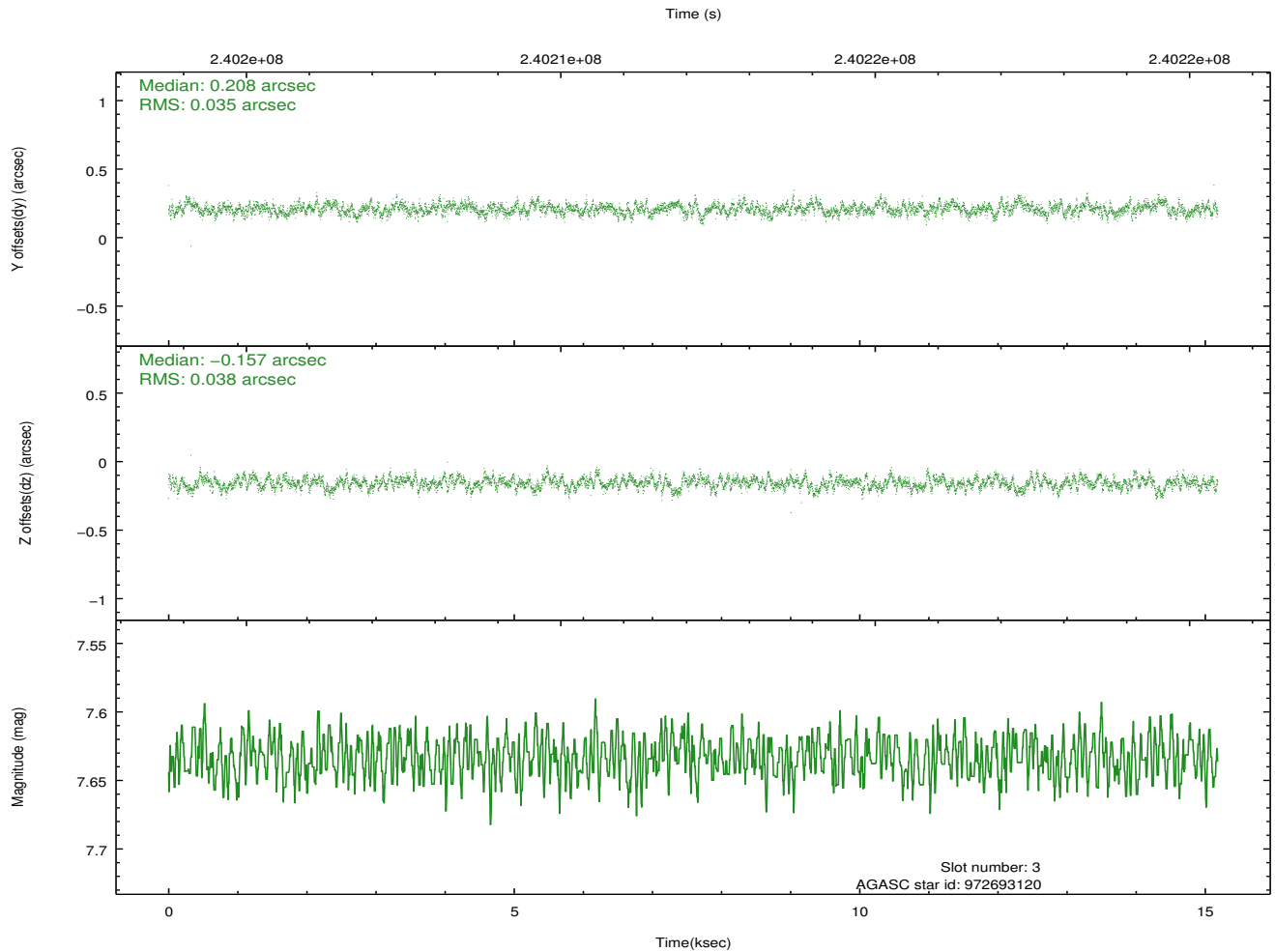
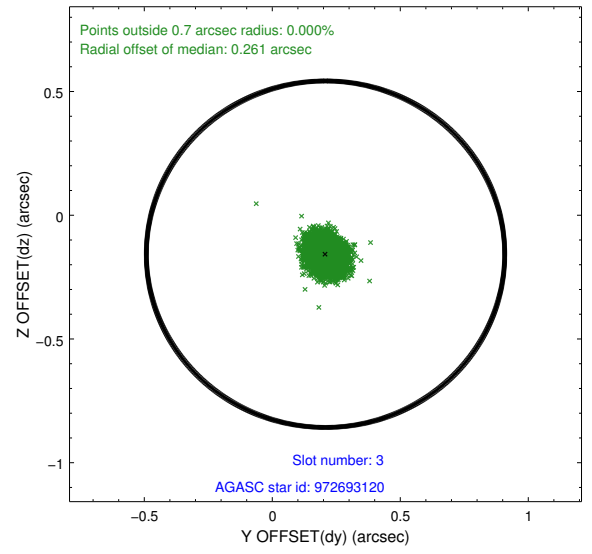
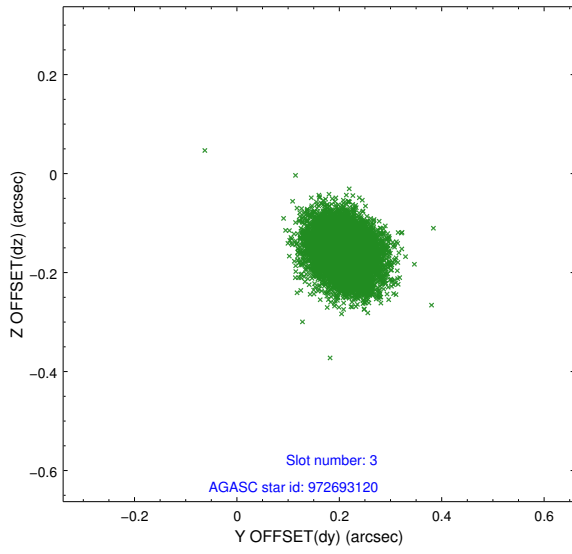


Slot Statistics

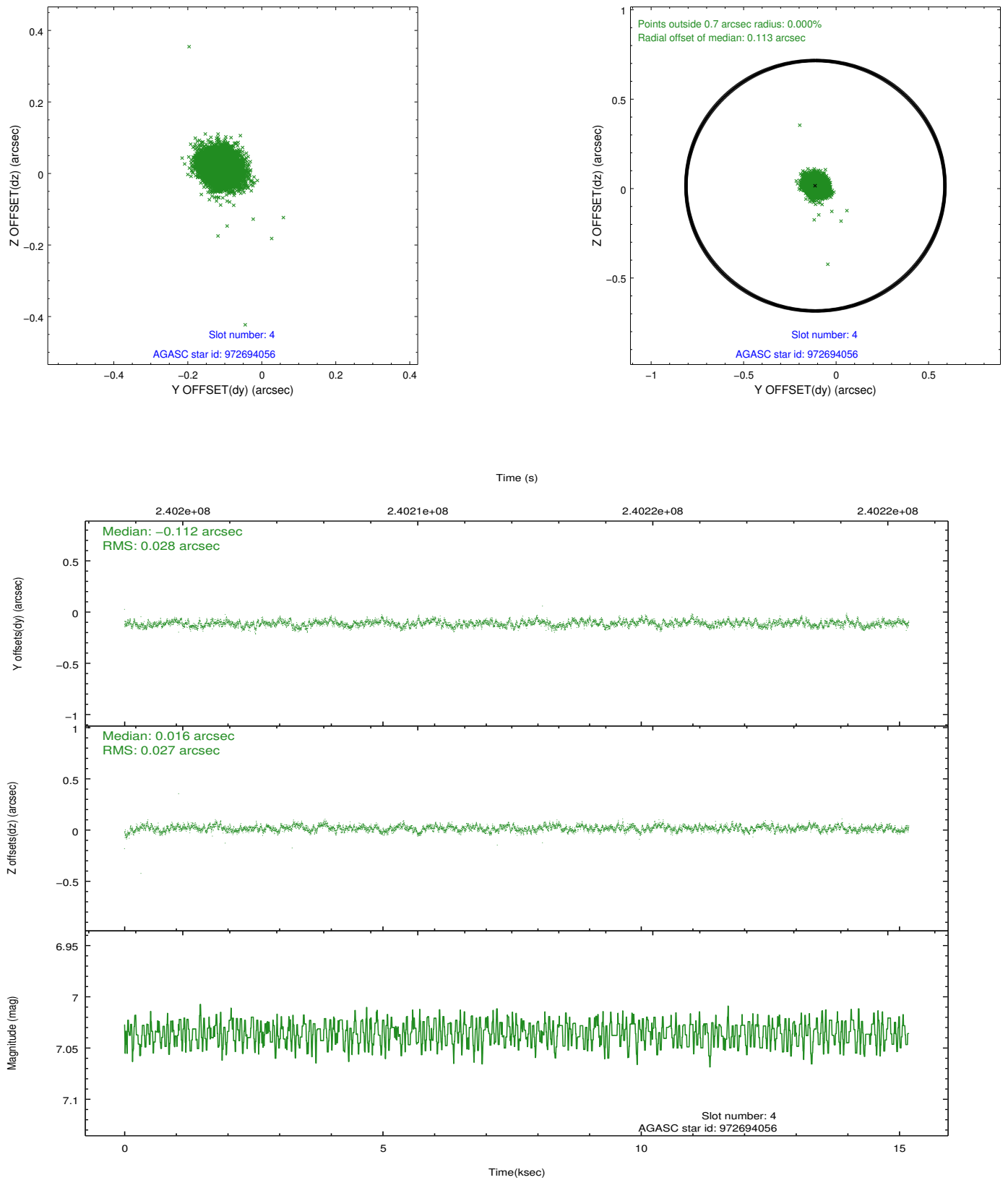
slot	status	id	mag	n_pts	med_dy	med_dz	dr1	dr2	ra	dec	mean_y	mean_z
0	FID	ACIS-I-1	7.24	3702	-0.053	0.011	0.023	0.034	0.000000	0.000000	932.70	-834.73
1	FID	ACIS-I-2	7.14	3702	-0.138	-0.058	0.012	0.019	0.000000	0.000000	-761.31	-841.40
2	FID	ACIS-I-4	7.17	3702	0.092	0.111	0.021	0.032	0.000000	0.000000	2152.60	1065.02
3	GUIDE	972693120	7.63	7404	0.208	-0.157	0.055	0.089	285.412210	-36.890704	-217.07	106.95
4	GUIDE	972694056	7.04	7405	-0.112	0.016	0.041	0.064	285.682787	-36.657985	-655.55	1164.83
5	GUIDE	1037567144	8.75	7401	0.003	0.040	0.073	0.118	284.940440	-37.605390	1570.76	-2184.06
6	GUIDE	972689192	8.92	7401	-0.105	-0.006	0.077	0.130	284.589186	-37.133486	-390.15	-2409.42
7	GUIDE	972816680	9.14	7399	0.002	0.111	0.100	0.156	286.054324	-36.904693	599.42	1766.08

2.4 Star Slots

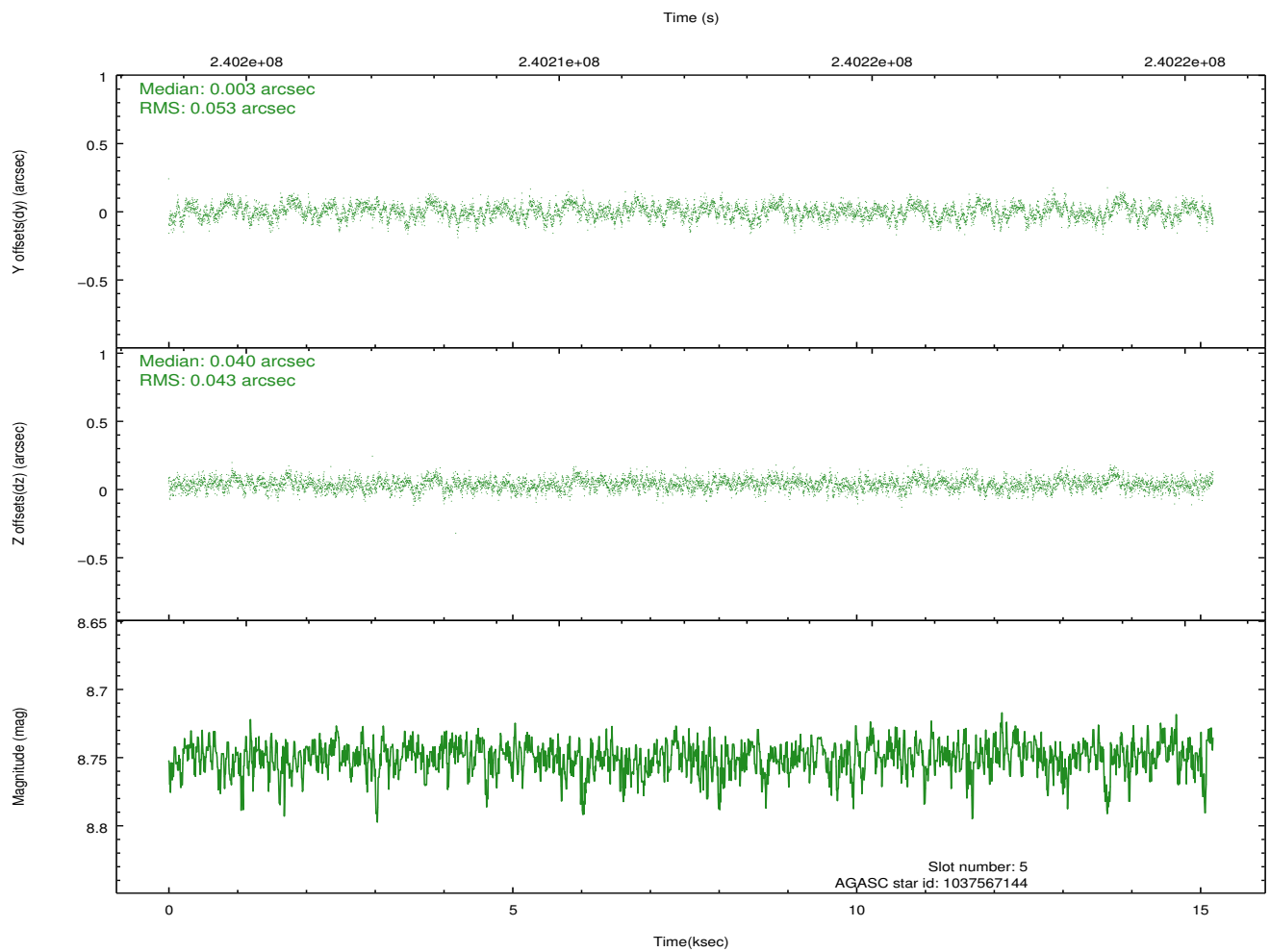
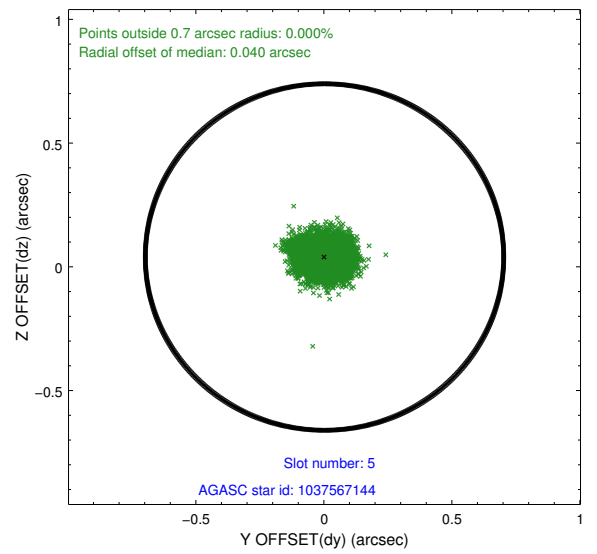
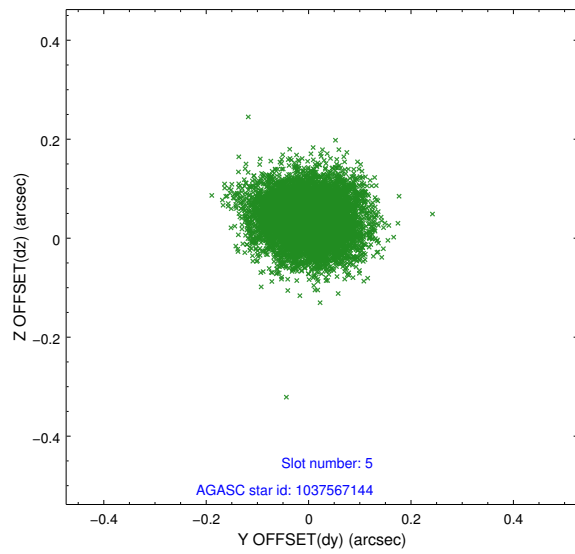
2.4.1 Slot 3



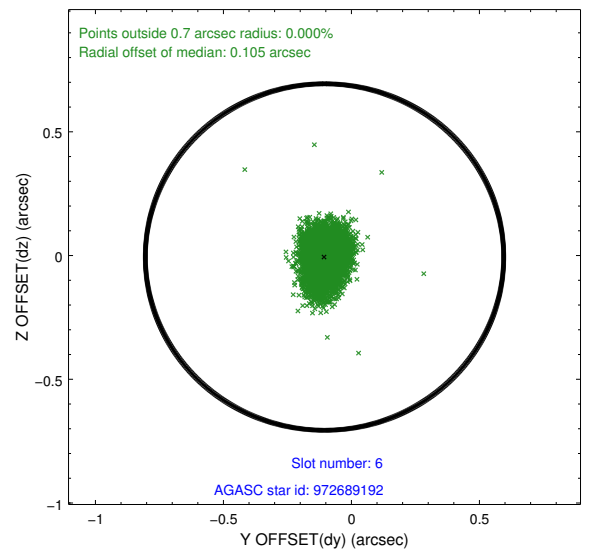
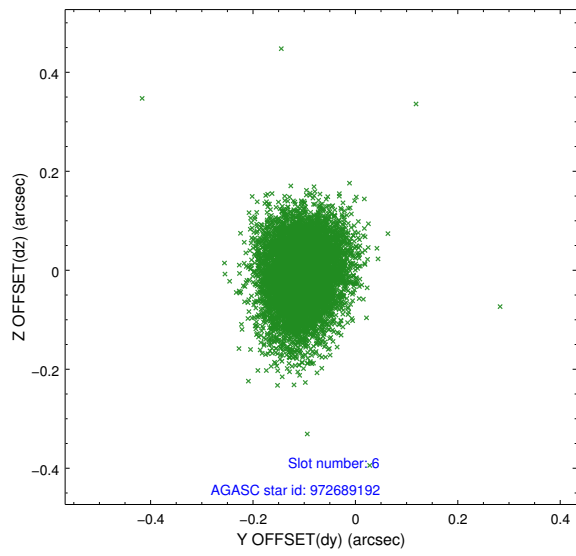
2.4.2 Slot 4



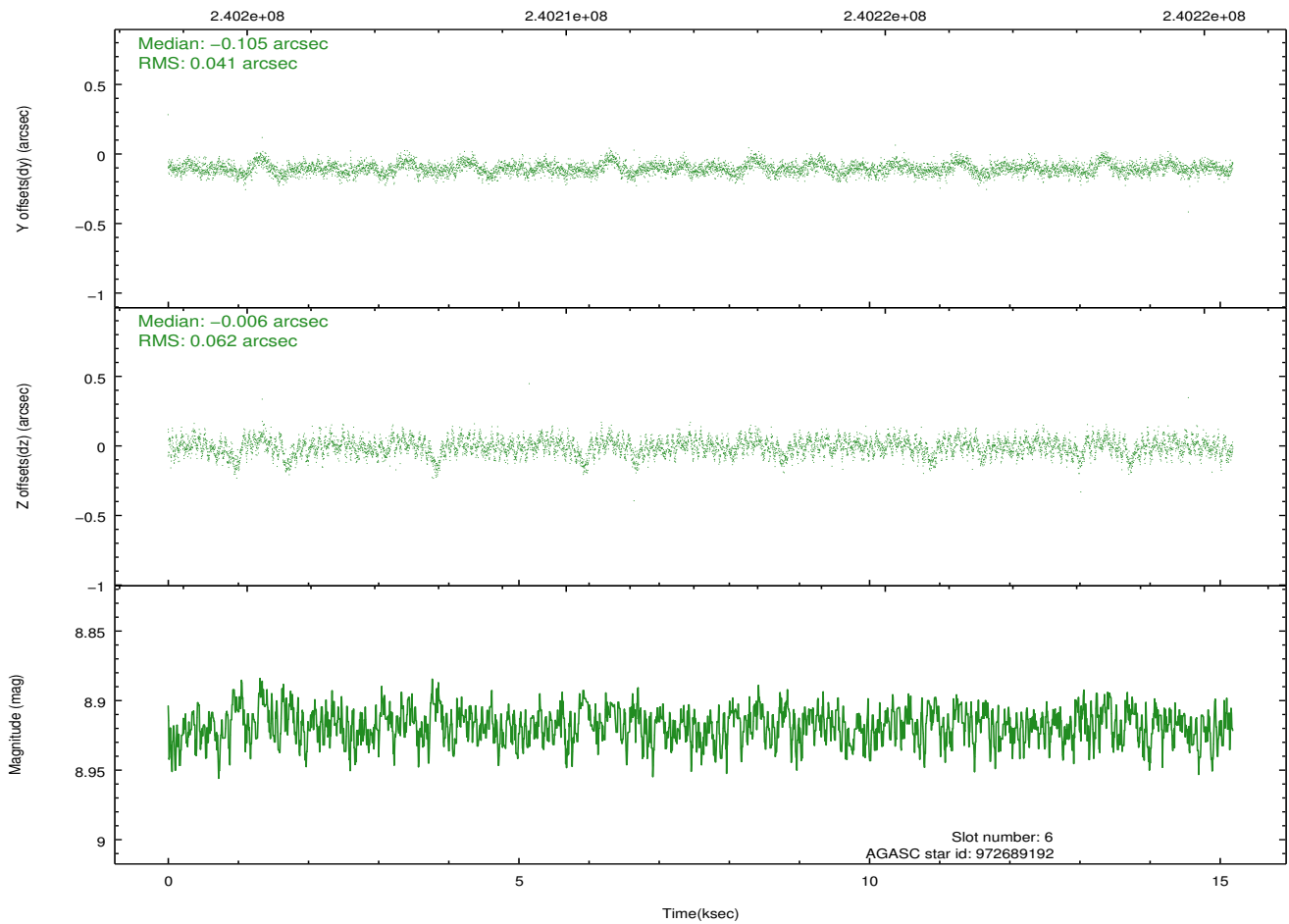
2.4.3 Slot 5



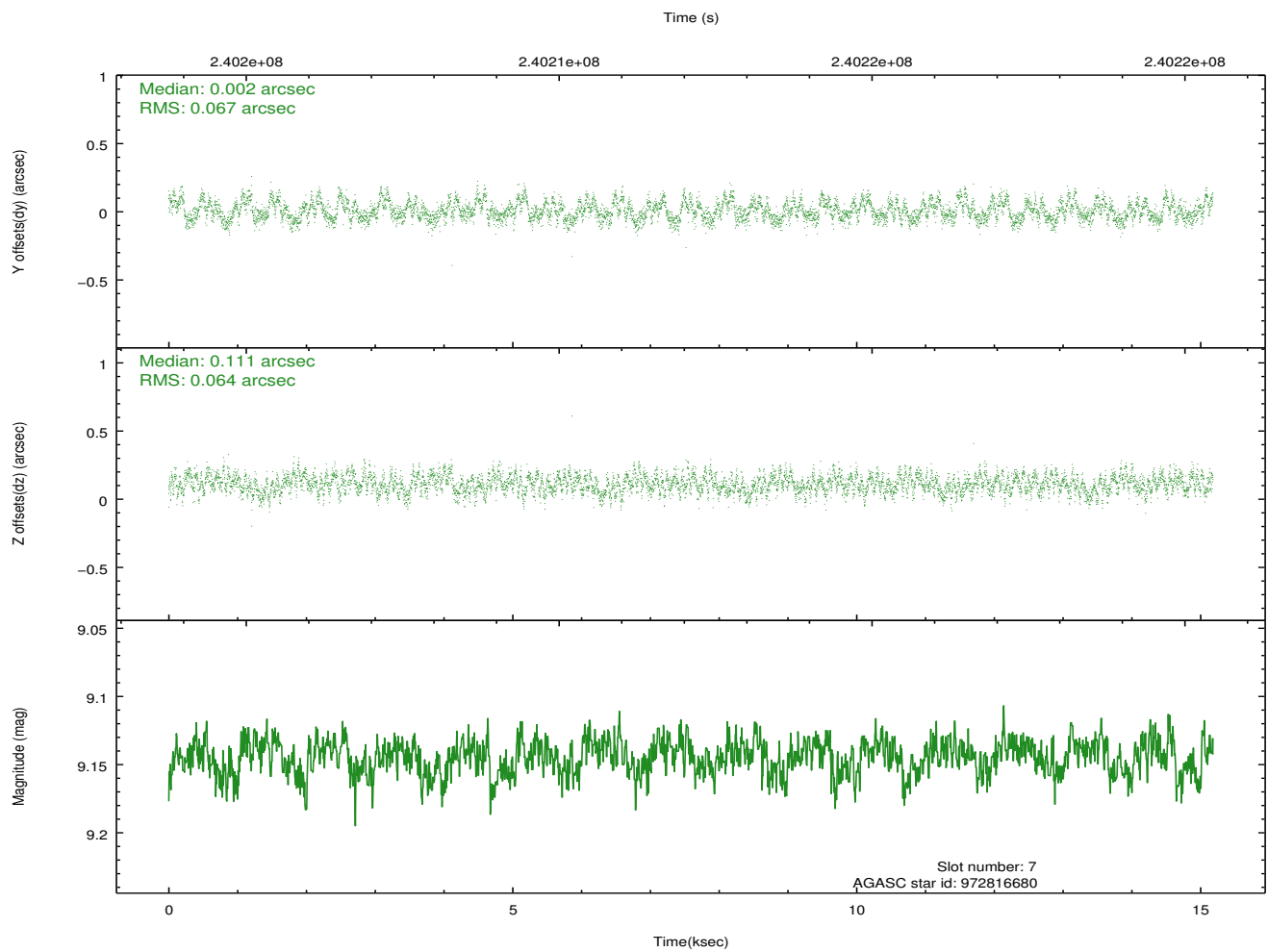
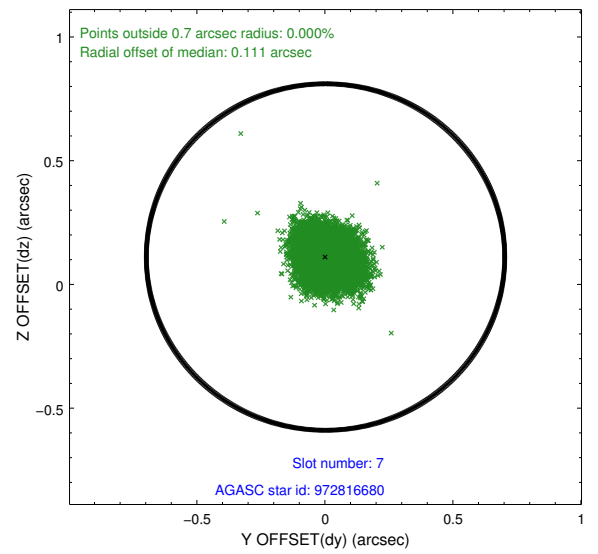
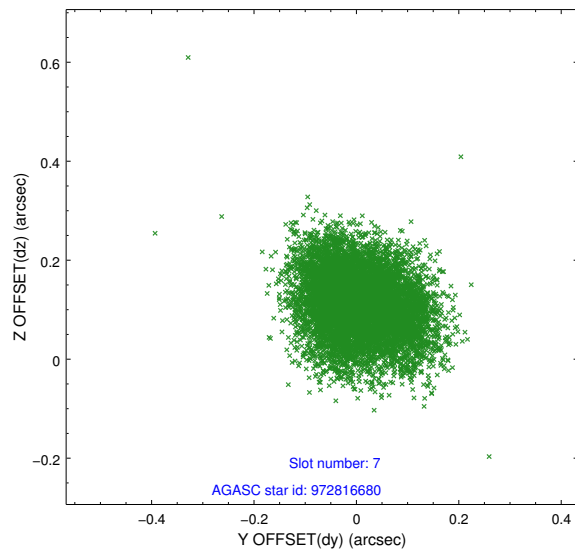
2.4.4 Slot 6



Time (s)

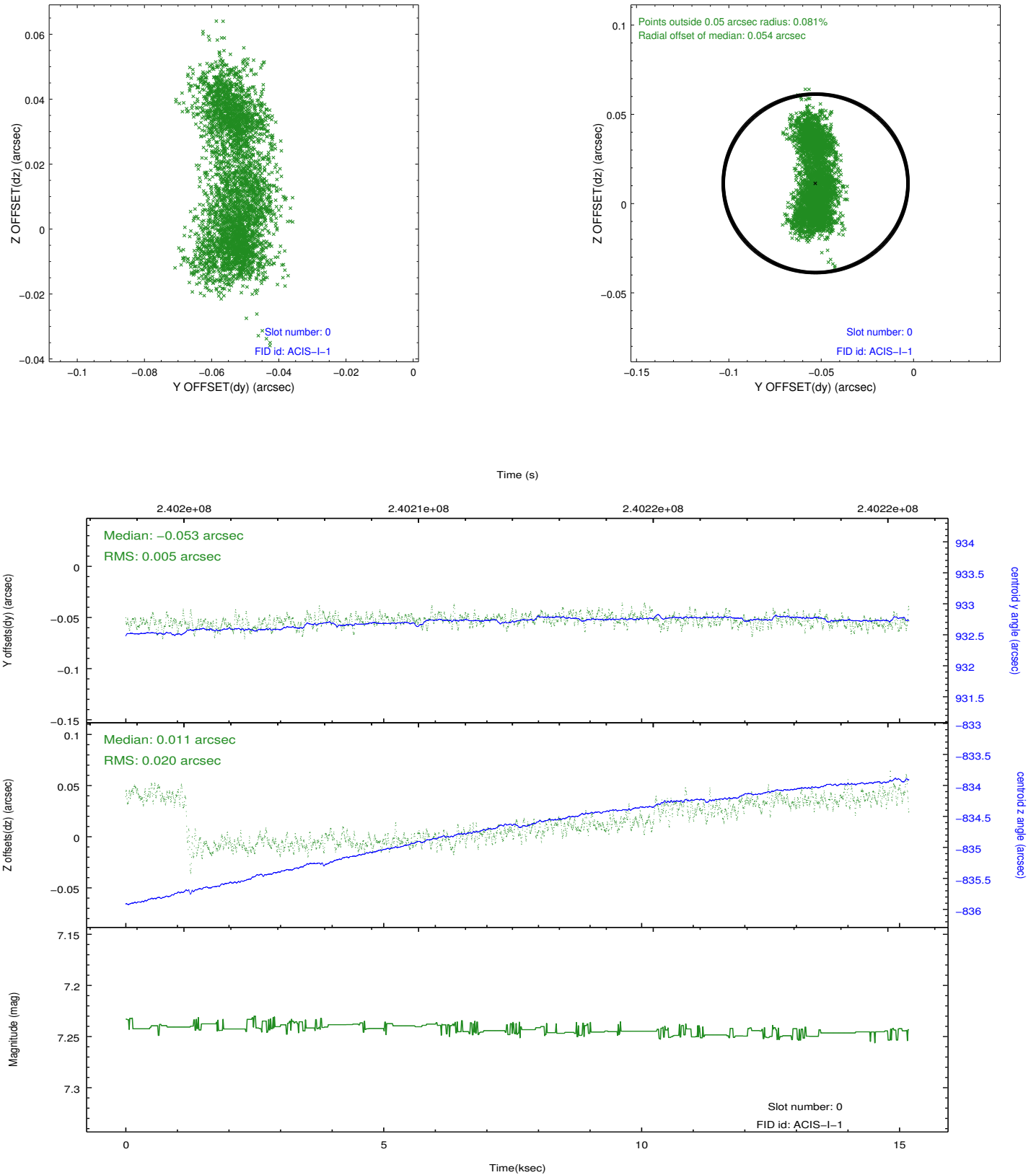


2.4.5 Slot 7

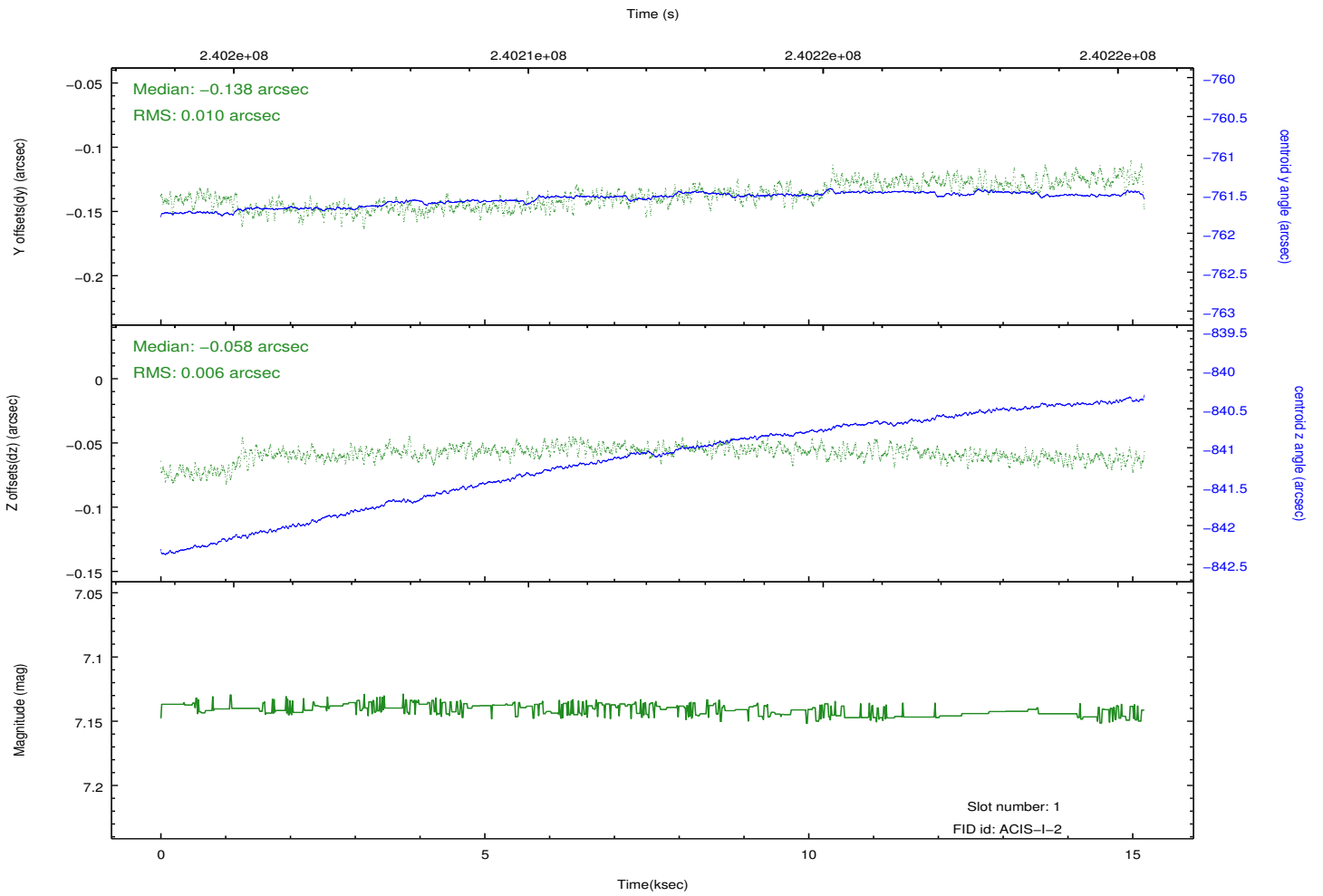
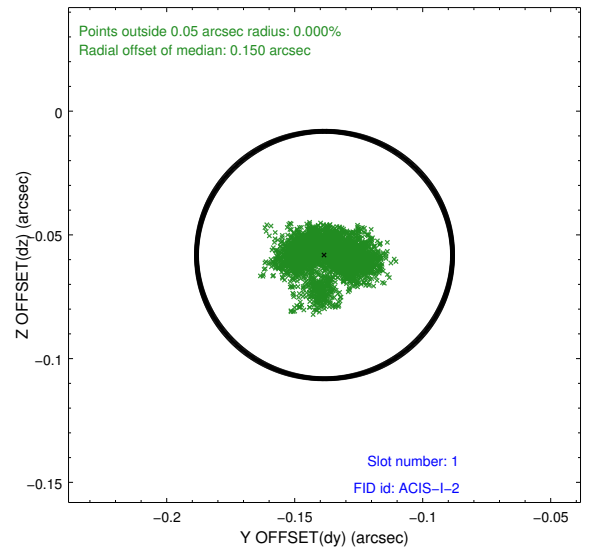
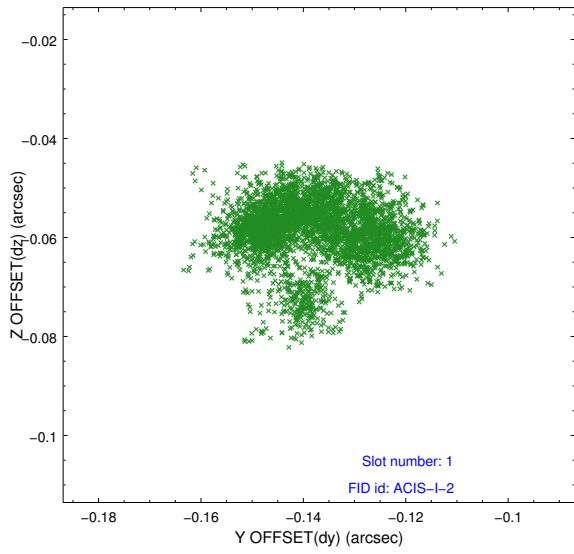


2.5 FID Slots

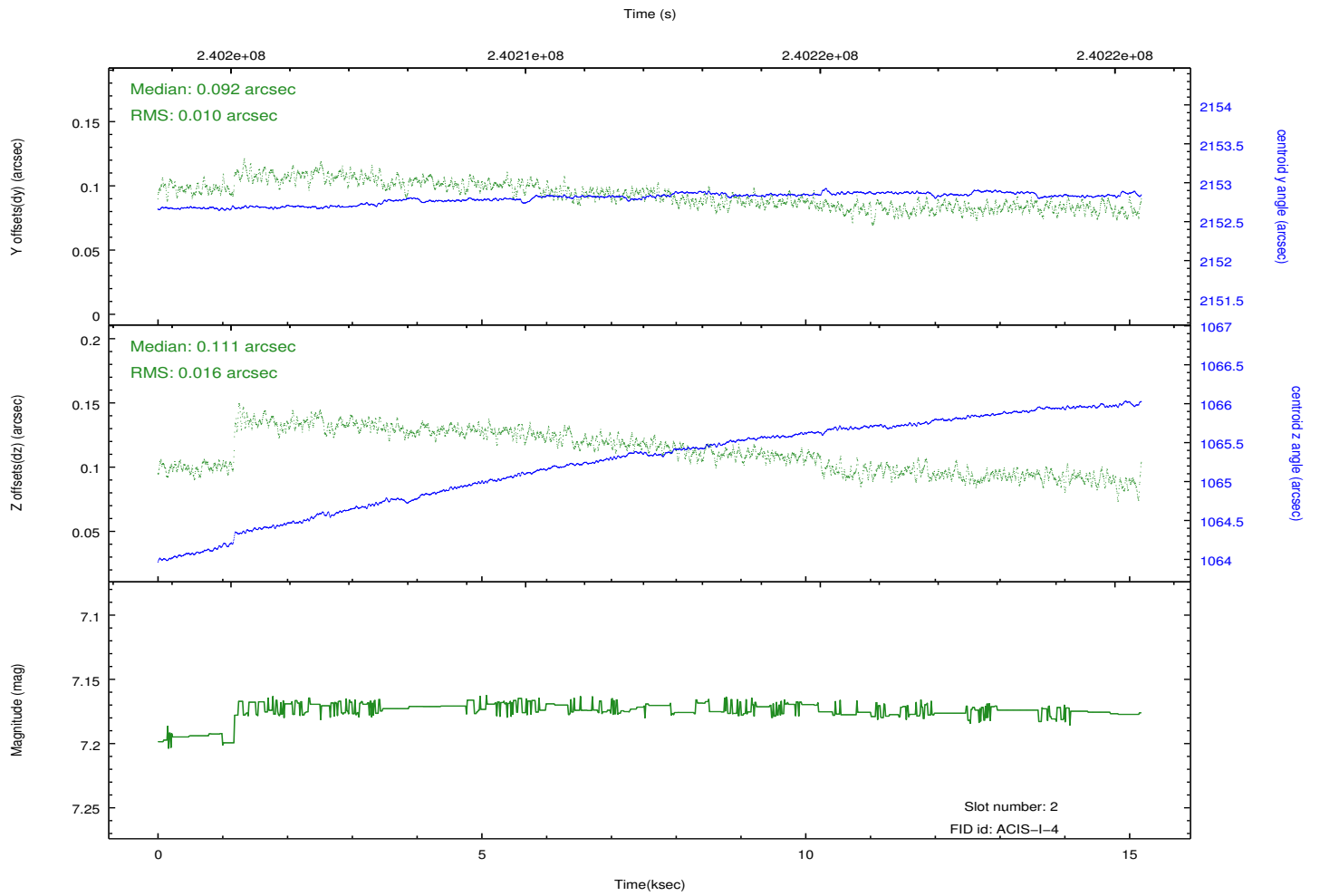
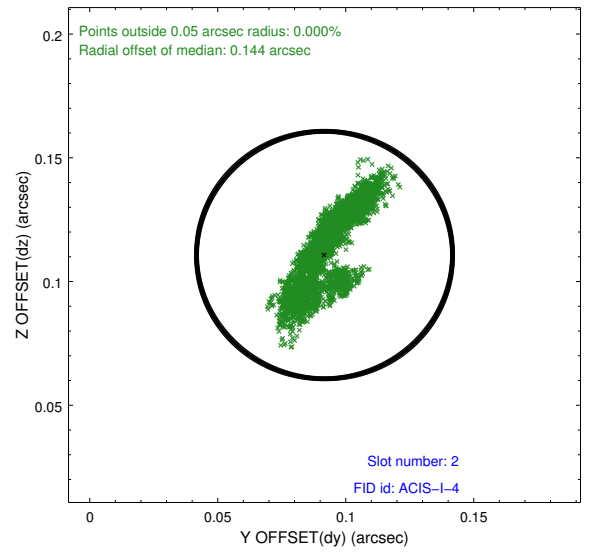
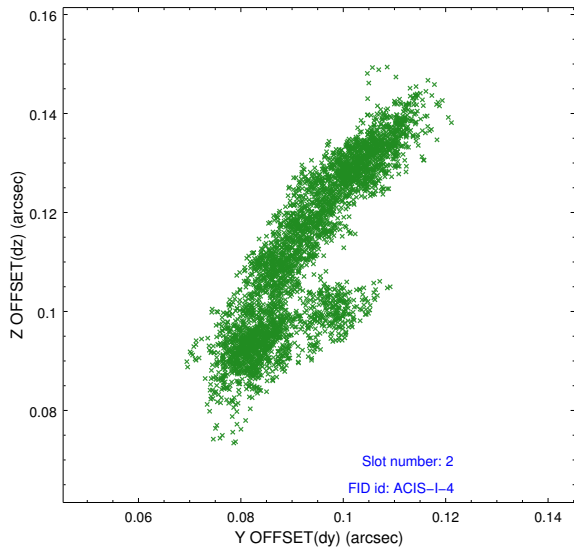
2.5.1 Slot 0



2.5.2 Slot 1



2.5.3 Slot 2



A Summary

A.1 Status

V&V Scientist	Beth Sundheim
V&V Date (YYYY-MM-DD)	2013.01.24
V&V Edition	1
V&V Disposition and Status	OK
V&V Charge Time	15.1744

A.2 Comments

Joint proposal with NRAO.