

V&V Reference Report

L2 ASCDS Version : 8.5.1.1

Observation 5645 - L2 Version 3
Chandra X-Ray Center

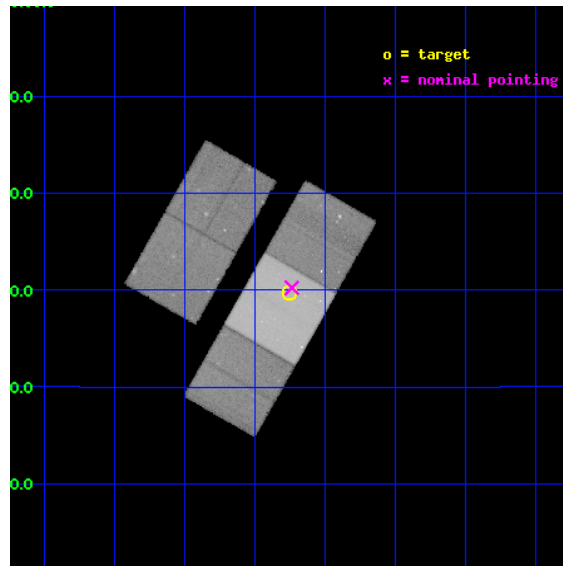
L2 Processing Date : Dec 21 2012

Contents

1	Front	2
2	OBI	3
2.1	OBI	3
2.1.1	Images	3
2.1.2	Bias	3
2.1.3	Parameters	4
2.1.4	Events	4
2.2	Compared Parameters	5
2.3	Aspect	6
2.4	Star Slots	9
2.4.1	Slot 3	9
2.4.2	Slot 4	10
2.4.3	Slot 5	11
2.4.4	Slot 6	12
2.4.5	Slot 7	13
2.5	FID Slots	14
2.5.1	Slot 0	14
2.5.2	Slot 1	15
2.5.3	Slot 2	16
A	Summary	17
A.1	Status	17
A.2	Comments	17

1 Front

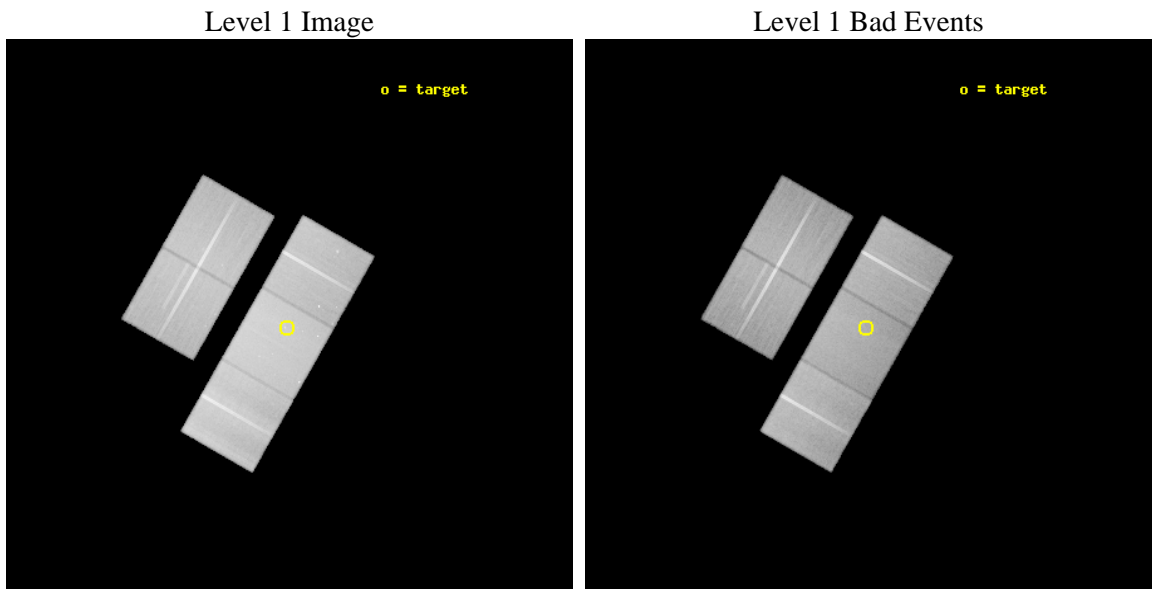
seq_num	701068	Sequence number
obs_id	5645	Observation id
title	MAGNIFIED VIEWS OF THE CLOVERLEAF QSO	Proposal title
observer	Dr. George Chartas	Principal investigator
object	H 1413+117	Source name
dtycycle	0	
cycle	P	events from which exps? Prim/Second/Both
ra_targ	213.9375	Observer's specified target RA [deg]
dec_targ	11.495	Observer's specified target Dec [deg]
ra_nom	213.93417569365	Nominal RA [deg]
dec_nom	11.504108425144	Nominal Dec [deg]
roll_nom	119.75241437984	Nominal Roll [deg]
revision	3	Processing version of data
ontime	90038.333219022	Sum of GTIs [s]
livetime	88861.916110258	Livetime [s]
ontime2	90022.464068025	Sum of GTIs [s]
ontime3	90035.110148787	Sum of GTIs [s]
ontime6	90035.151148945	Sum of GTIs [s]
ontime7	90038.333219022	Sum of GTIs [s]
ontime8	90028.787207901	Sum of GTIs [s]
l2events	669300	Number of level 2 events



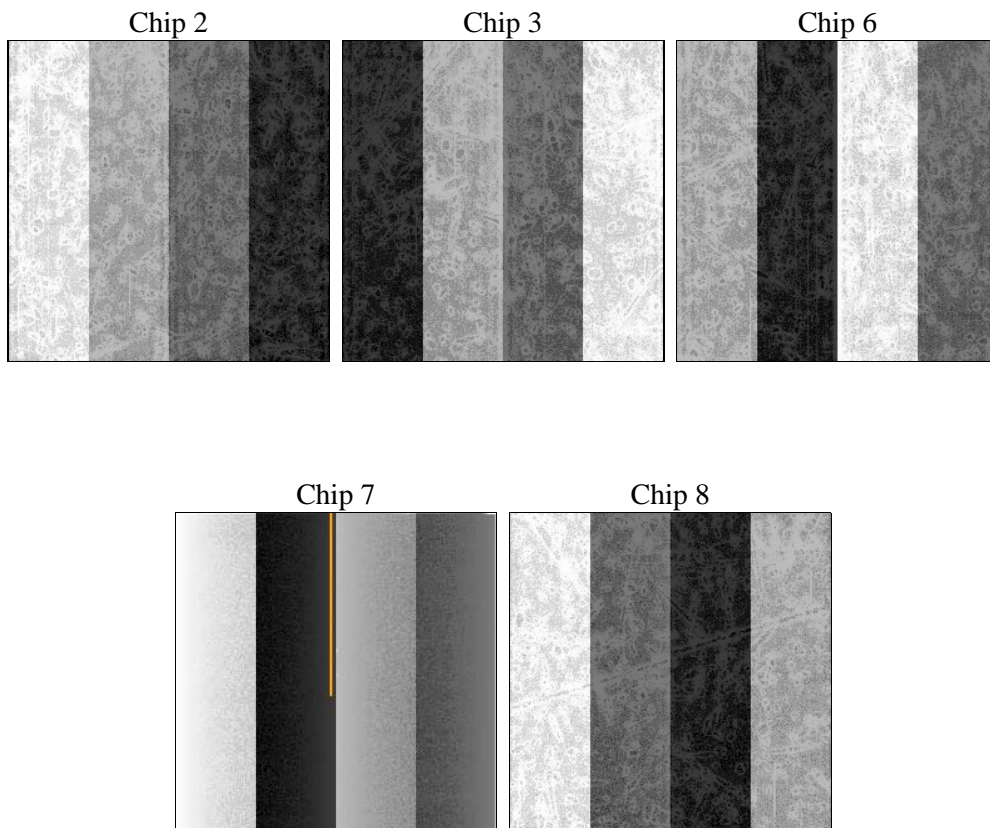
2 OBI

2.1 OBI

2.1.1 Images



2.1.2 Bias



2.1.3 Parameters

obi_num	0	Obi number	sched_exp_time	90000.000000	[s] Scheduled observation exposure time
ascdsver	8.5.1.1	Processing system revision	ontime	90038.333219022	Sum of GTIs [s]
caldbver	4.5.5	 	ontime2	90022.464068025	Sum of GTIs [s]
date	2012-12-21T05:27:04	Date and time of file creation	ontime3	90035.110148787	Sum of GTIs [s]
revision	3	Processing version of data	ontime6	90035.151148945	Sum of GTIs [s]
			ontime7	90038.333219022	Sum of GTIs [s]
			ontime8	90028.787207901	Sum of GTIs [s]
			l1events	3762999	Number of level 1 events

2.1.4 Events

	ccd 2	ccd 3	ccd 6	ccd 7	ccd 8
level 1 events	657407	653960	681687	917728	852217
rejected events	576646	573757	595652	537482	670622
rejected %	87%	87%	87%	58%	78%

	ccd 2	ccd 3	ccd 6	ccd 7	ccd 8
grade 0 events	37203	36128	36786	36541	57998
	5%	5%	5%	3%	6%
grade 1 events	367	443	351	906	572
	0%	0%	0%	0%	0%
grade 2 events	15812	15016	17289	76019	39957
	2%	2%	2%	8%	4%
grade 3 events	7506	7659	7840	33468	18930
	1%	1%	1%	3%	2%
grade 4 events	7493	7726	7811	33247	17556
	1%	1%	1%	3%	2%
grade 5 events	25599	30121	31349	86083	41360
	3%	4%	4%	9%	4%
grade 6 events	12747	13680	16312	200995	47214
	1%	2%	2%	21%	5%
grade 7 events	550680	543187	563949	450469	628630
	83%	83%	82%	49%	73%

2.2 Compared Parameters

Parameter	Planned	Actual	Parameter	Planned	Actual
Instrument	ACIS	ACIS	Obspar format version number	7	7
Detector	ACIS-23678	ACIS-23678	Obspar file type	PREDICTED	ACTUAL
Grating	NONE	NONE	Obspar update status	NONE	UPDATED
Data mode	VFAINT	VFAINT	Number of optional ACIS chips dropped	0	0
Observation mode	POINTING	POINTING	On-chip summing requested	N	N
[deg] Pointing RA	213.958371	213.9341756936496	Subarray requested	NONE	NONE
[deg] Pointing Dec	11.490712	11.50410842514424	Alternating exposures requested	N	N
[deg] Pointing Roll	119.590971	119.7524143798424	[s] Primary exposure time	0.000000	3.1
[mm] SIM focus pos	-0.684267	-0.6828225247311905			
[mm] SIM defocus	0	0.001444936568705701			
[mm] SIM translation stage pos	-190.132523	-190.1400660498719			
[mm] SIM translation stage offset	0	0.00754346686406393			
[s] Observation start time (MET)	228534417.184000	228533250.39366			
Observation start date	2005-03-30T01:45:53	2005-03-30T01:27:30			
[s] Observation end time (MET)	228624417.184000	228624960.22283			
Observation end date	2005-03-31T02:45:53	2005-03-31T02:56:00			
Read mode	TIMED	TIMED			

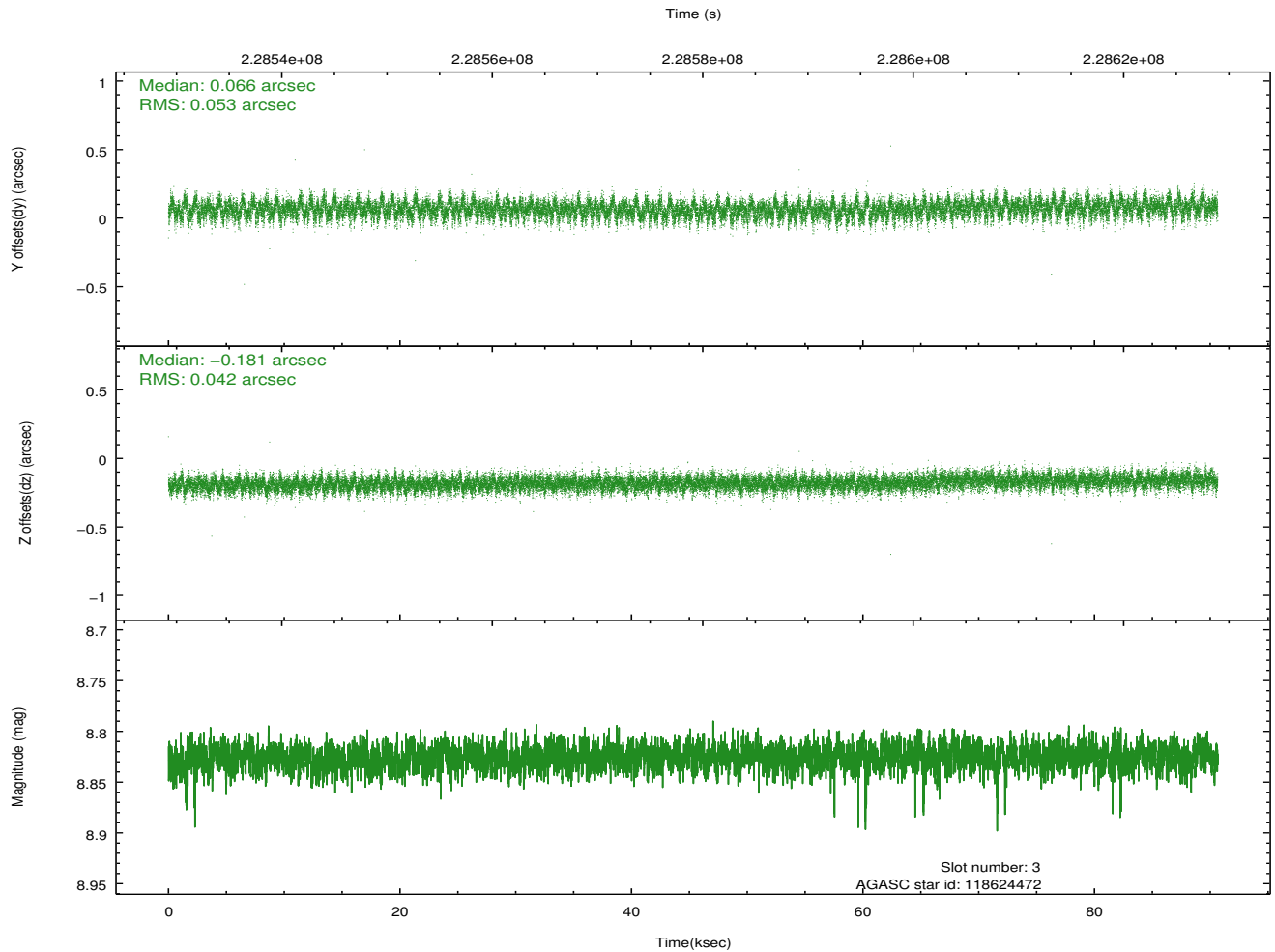
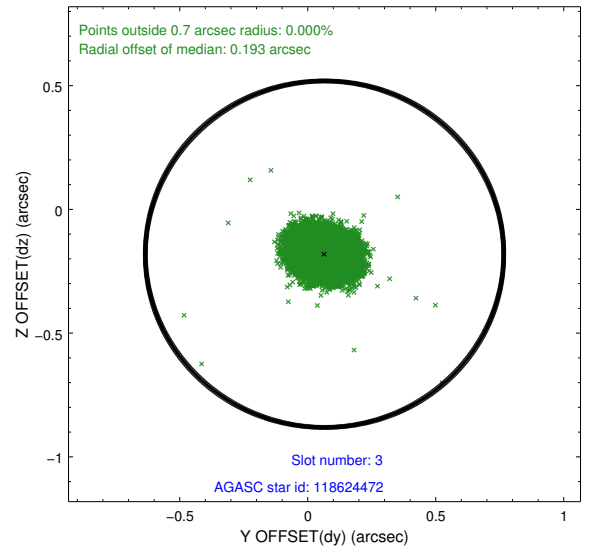
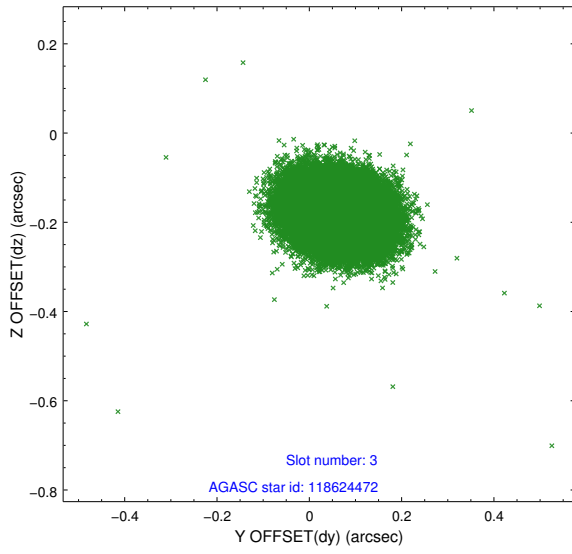
2.3 Aspect

Slot Statistics

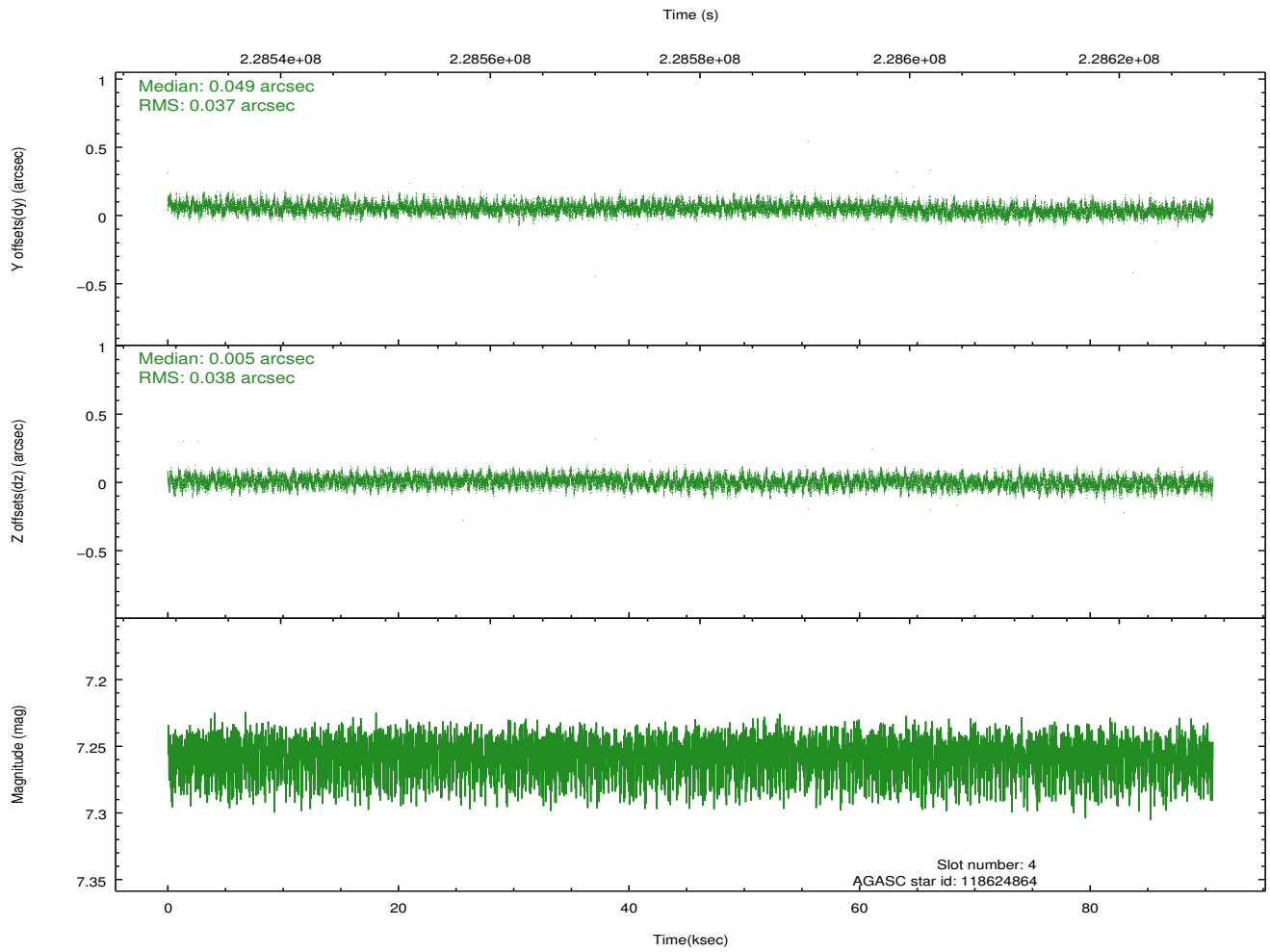
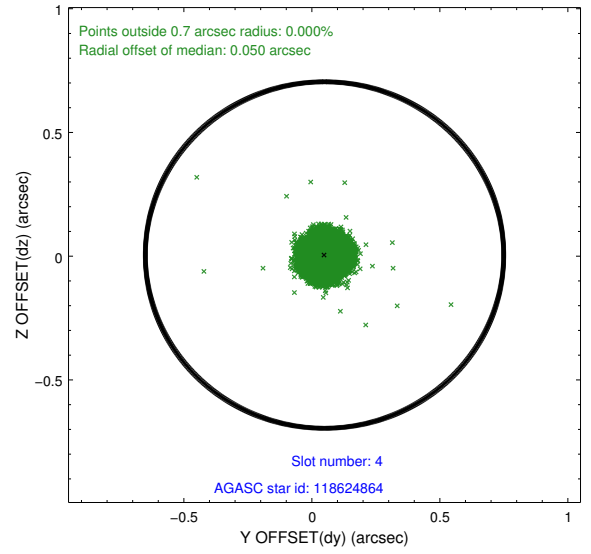
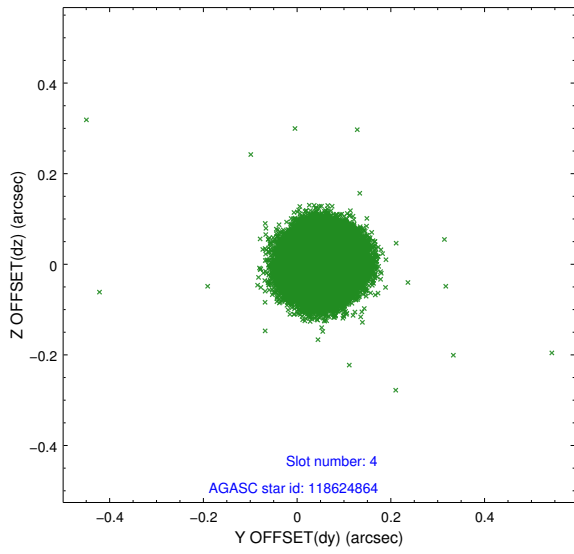
slot	status	id	mag	n_pts	med_dy	med_dz	dr1	dr2	ra	dec	mean_y	mean_z
0	FID	ACIS-S-2	7.10	22110	-0.078	-0.047	0.012	0.030	0.000000	0.000000	-759.06	-1730.45
1	FID	ACIS-S-4	7.21	22109	0.065	0.049	0.011	0.019	0.000000	0.000000	2154.40	178.22
2	FID	ACIS-S-6	7.36	22108	-0.012	0.007	0.009	0.014	0.000000	0.000000	402.88	815.48
3	GUIDE	118624472	8.83	44200	0.066	-0.181	0.072	0.118	213.211383	11.620451	1710.08	2058.34
4	GUIDE	118624864	7.26	44218	0.049	0.005	0.057	0.090	214.403642	11.335239	-1261.37	-1090.66
5	GUIDE	118626032	9.72	44177	0.229	-0.099	0.094	0.154	214.111327	10.931412	-2017.26	524.34
6	GUIDE	118626824	9.29	44187	-0.121	0.117	0.098	0.162	213.749334	12.111955	2308.40	-464.37
7	GUIDE	118628136	8.80	44157	-0.225	0.159	0.073	0.118	213.887181	11.834140	1199.01	-392.10

2.4 Star Slots

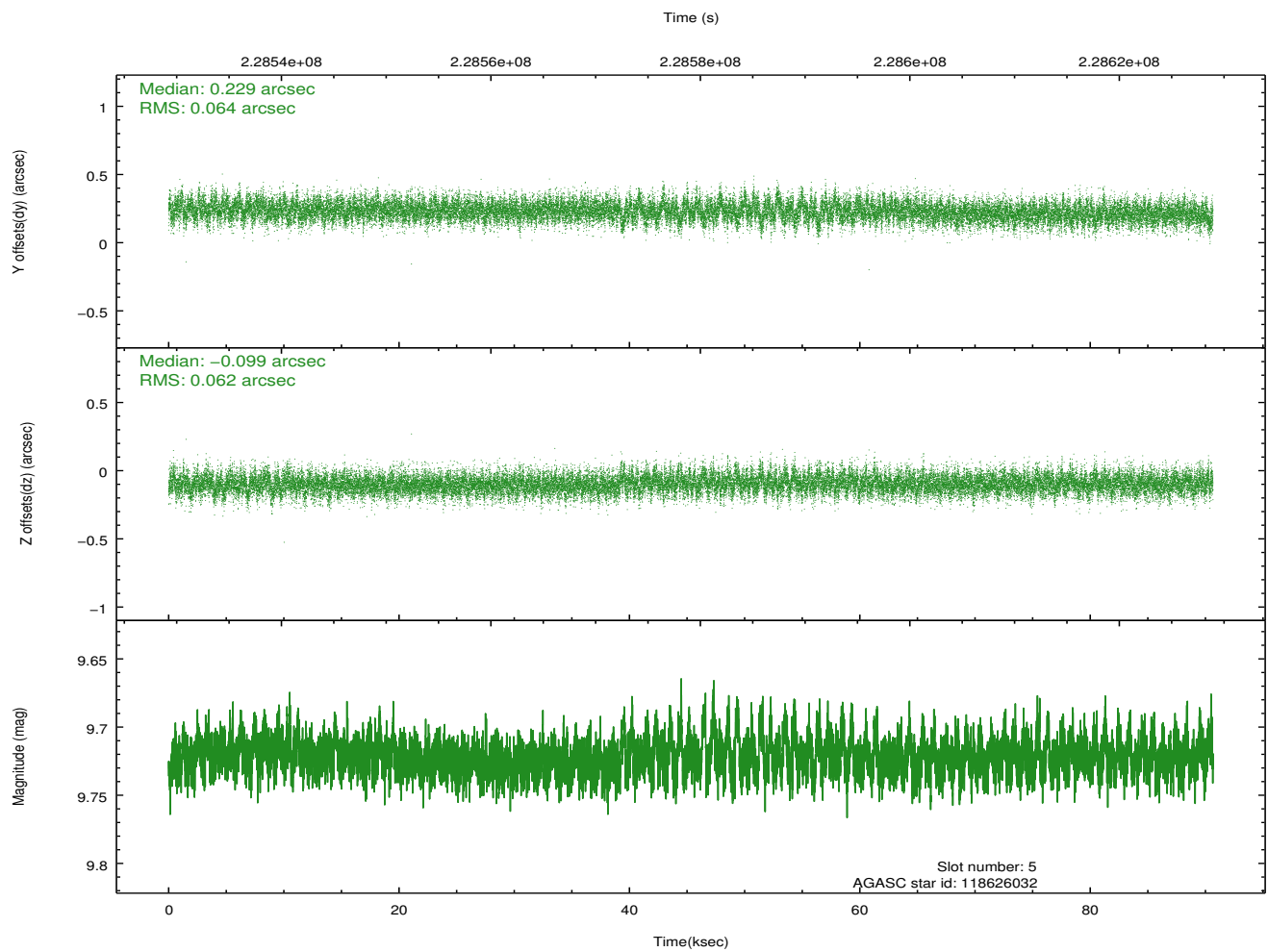
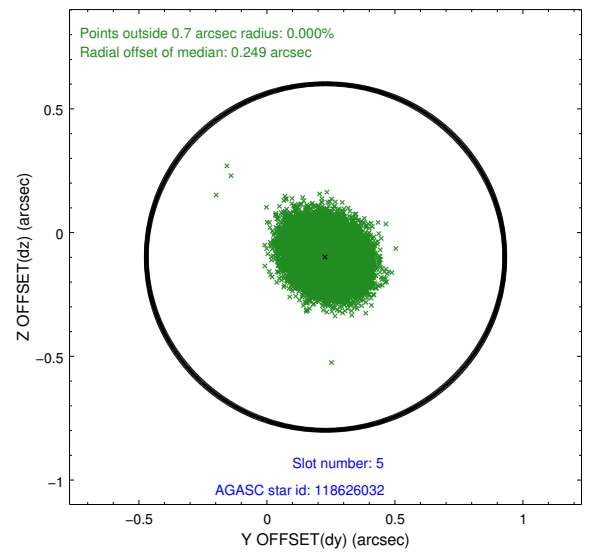
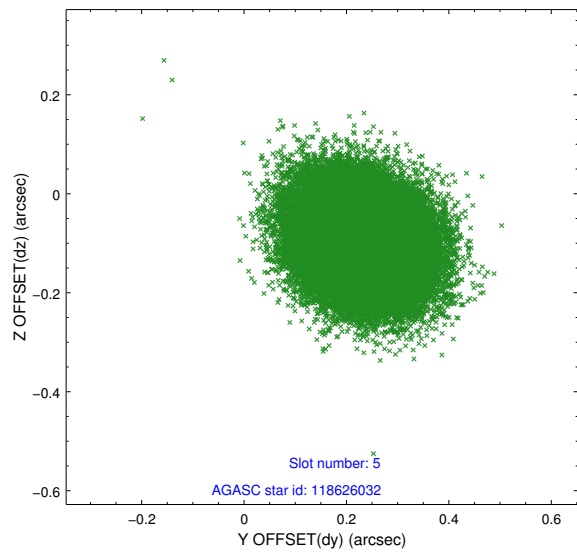
2.4.1 Slot 3



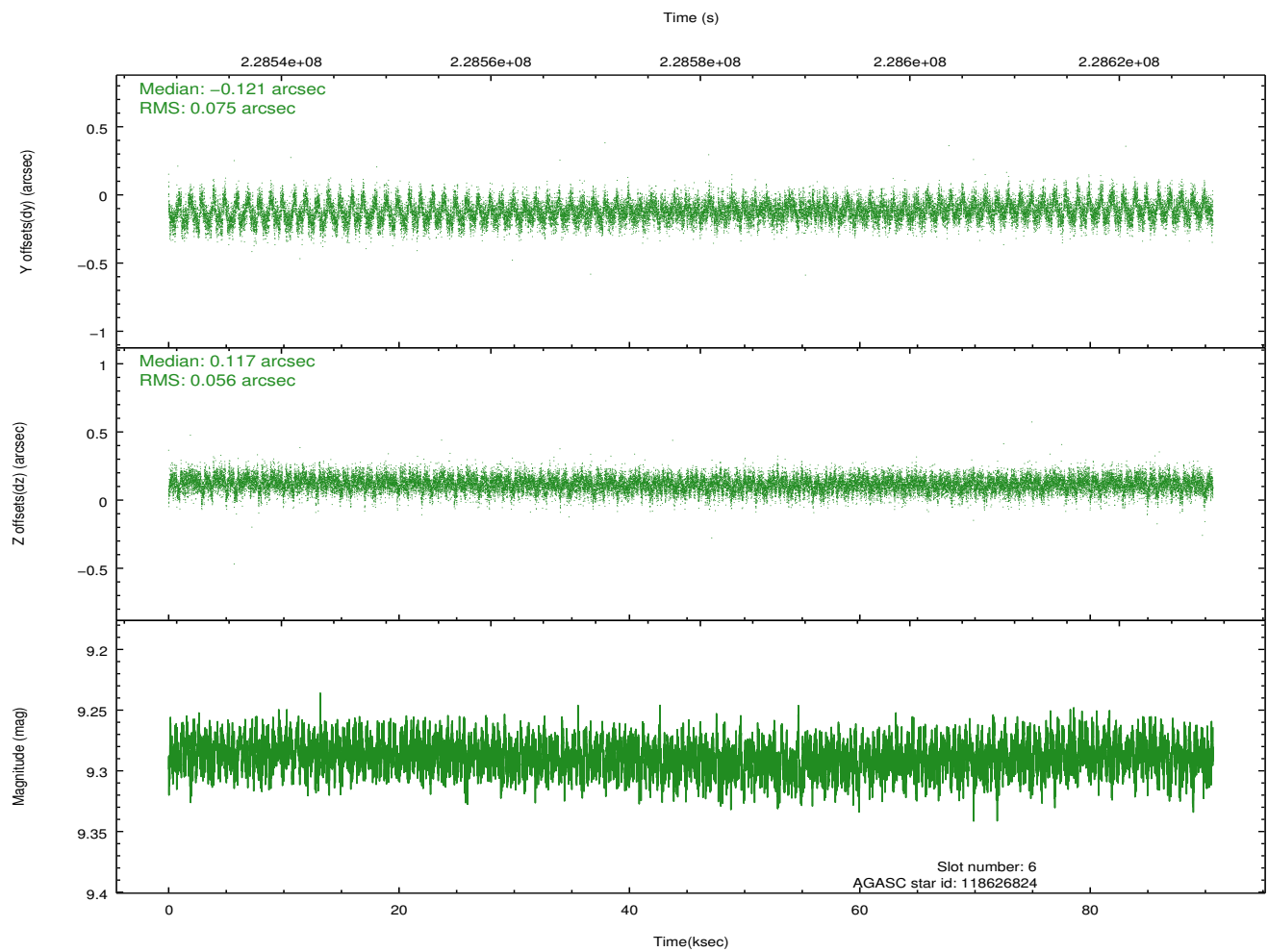
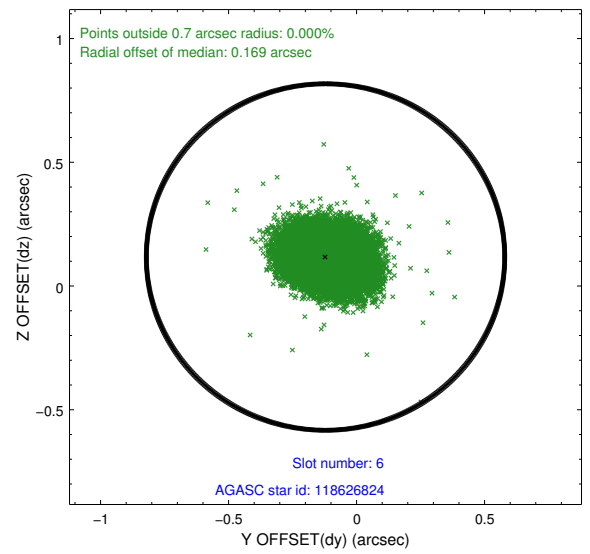
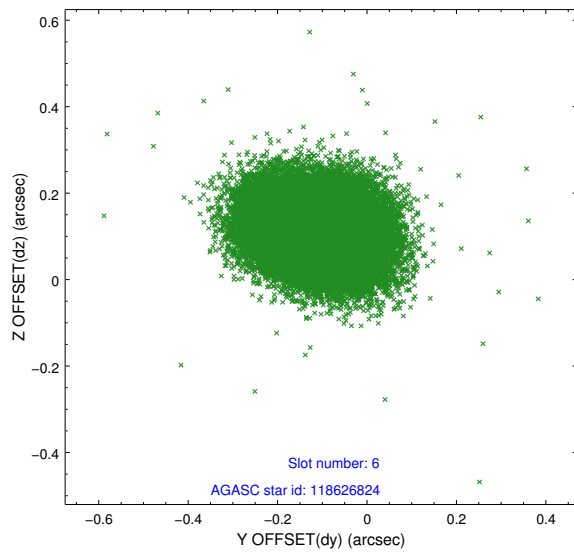
2.4.2 Slot 4



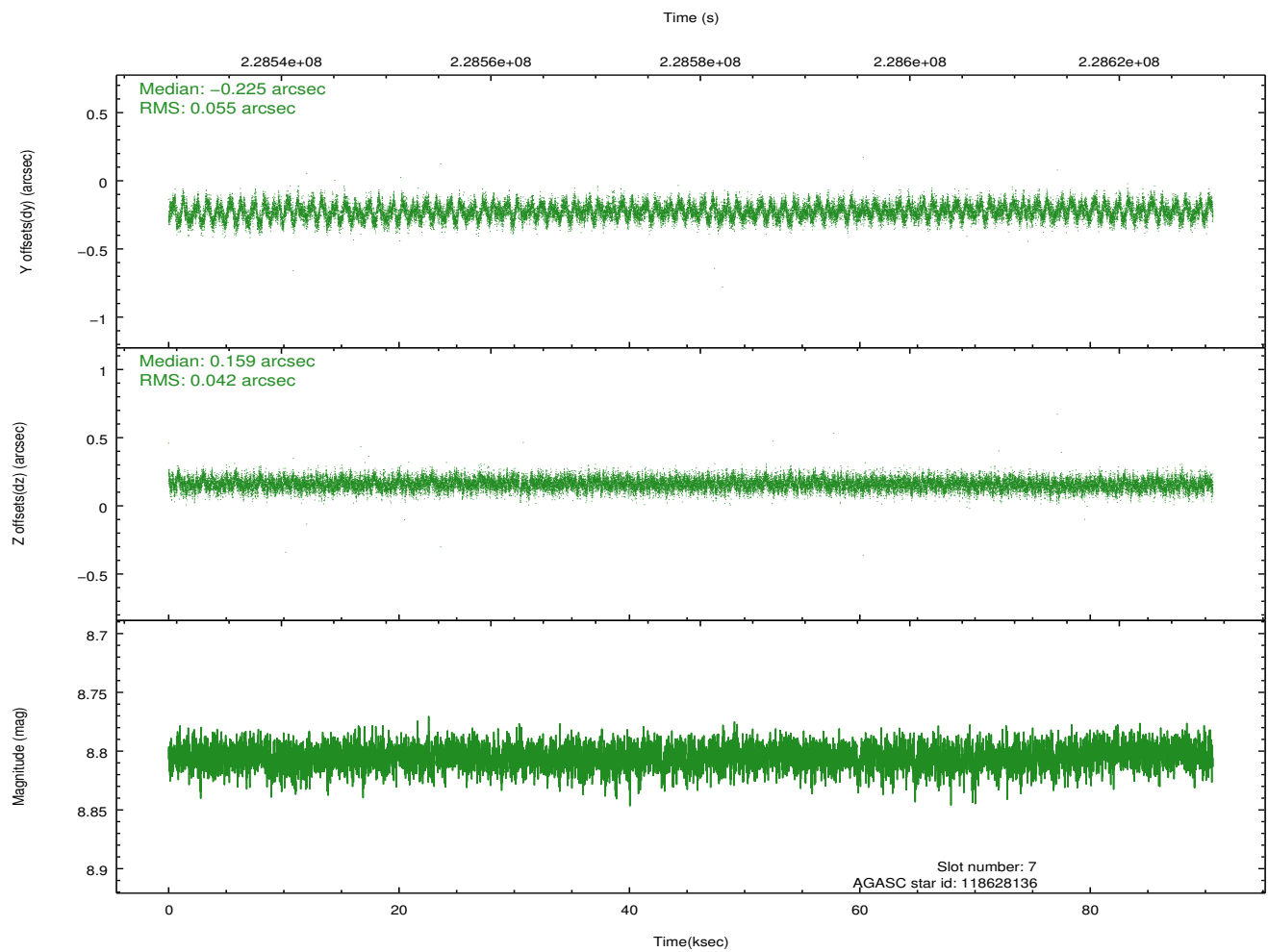
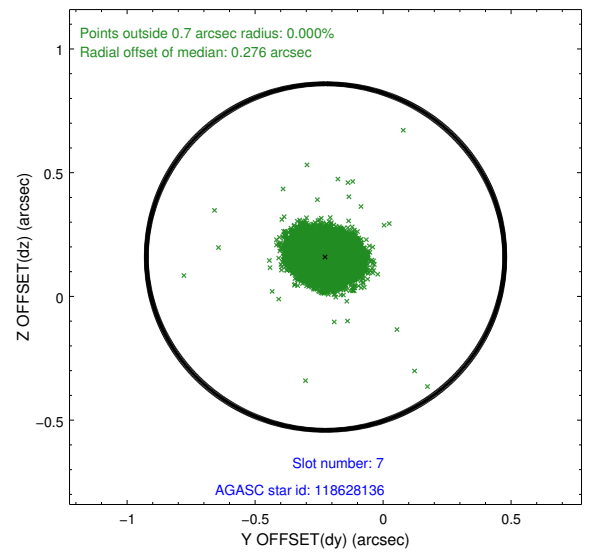
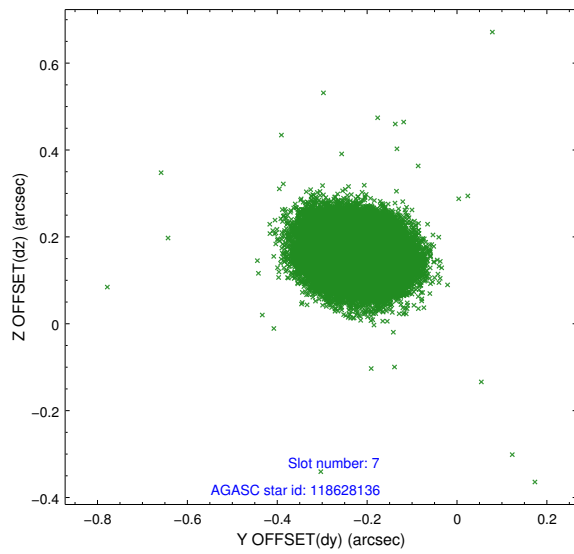
2.4.3 Slot 5



2.4.4 Slot 6

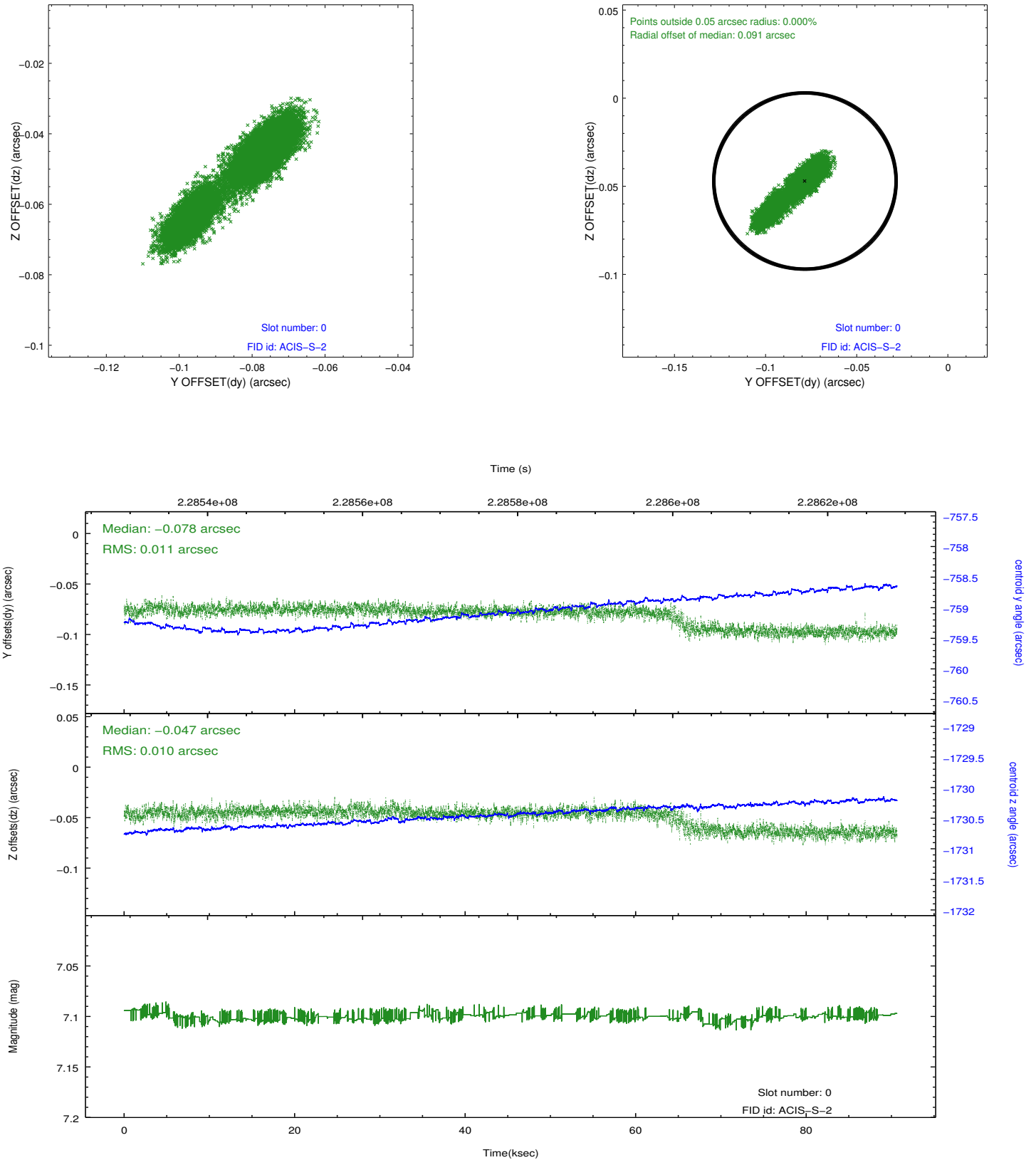


2.4.5 Slot 7

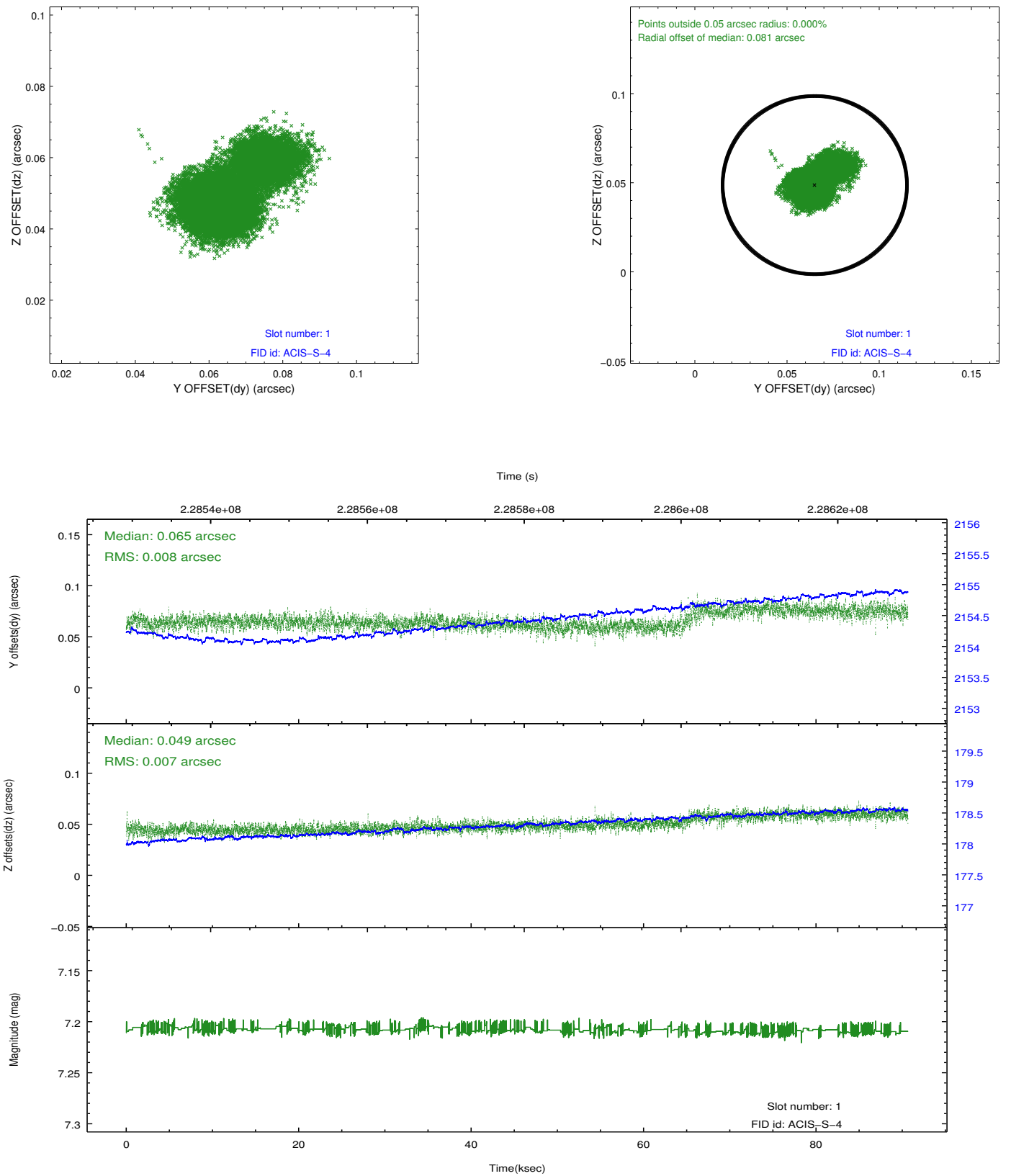


2.5 FID Slots

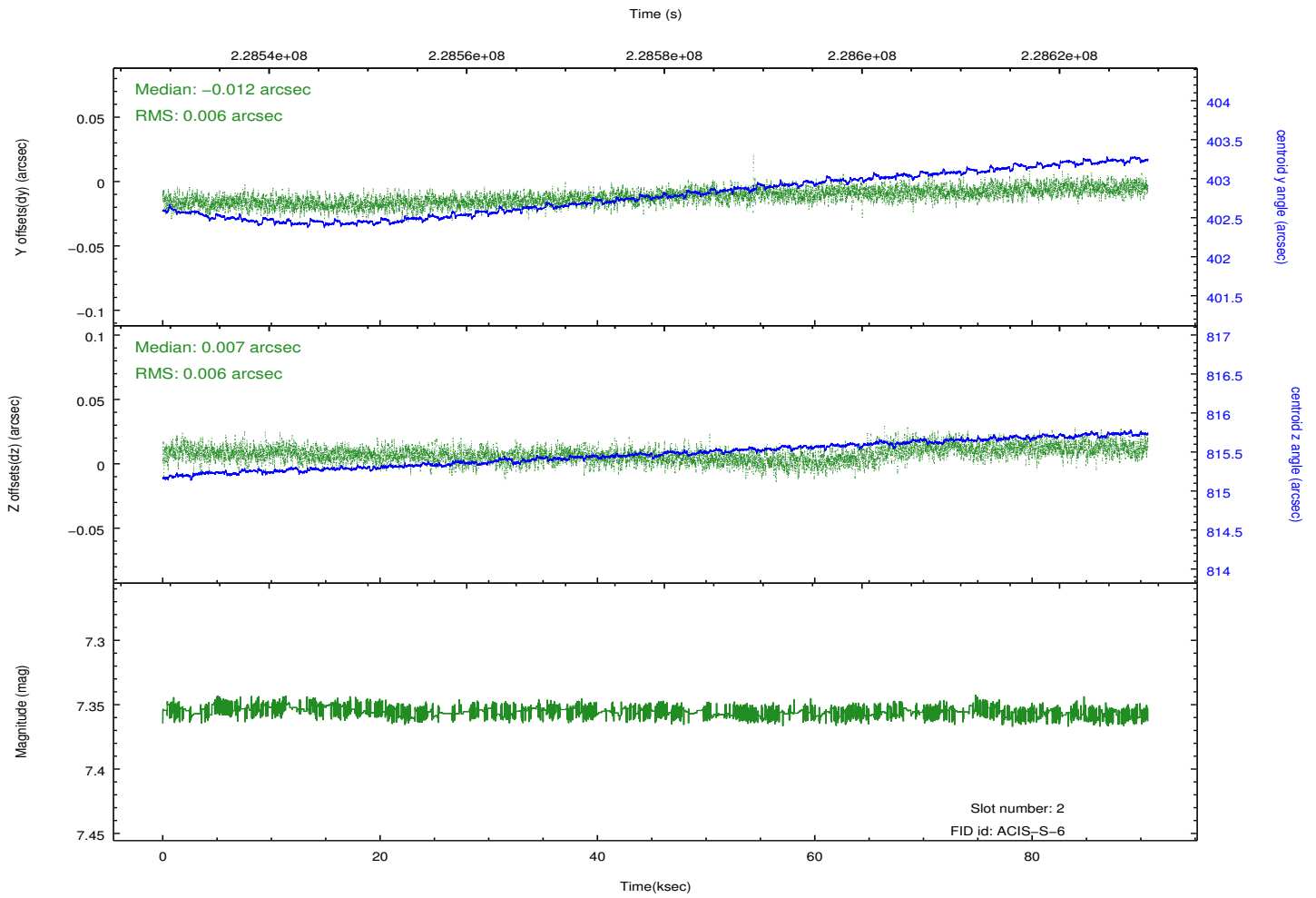
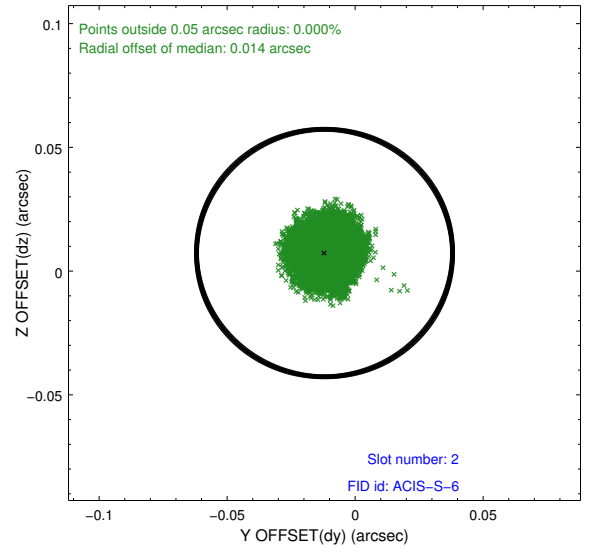
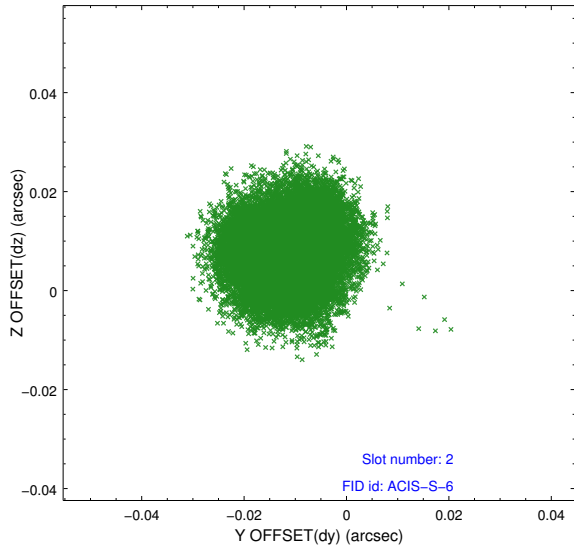
2.5.1 Slot 0



2.5.2 Slot 1



2.5.3 Slot 2



A Summary

A.1 Status

V&V Scientist	Jen Lauer
V&V Date (YYYY-MM-DD)	2013.01.14
V&V Edition	1
V&V Disposition and Status	OK
V&V Charge Time	90.03949

A.2 Comments