

V&V Reference Report

L2 ASCDS Version : 8.5.1.1

Observation 5805 - L2 Version 3
Chandra X-Ray Center

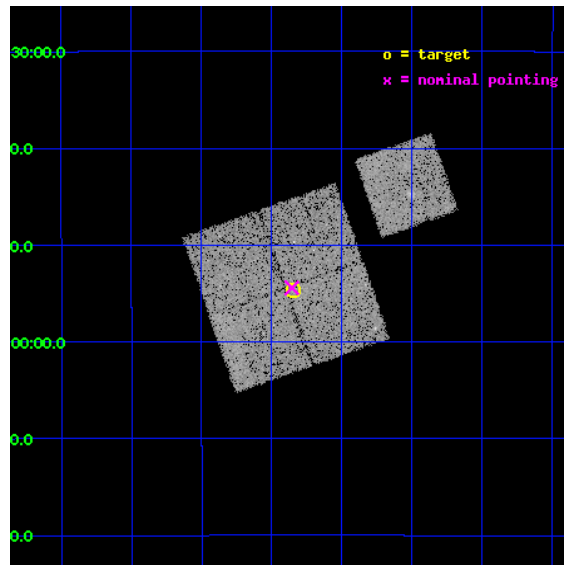
L2 Processing Date : Dec 20 2012

Contents

1	Front	2
2	OBI	3
2.1	OBI	3
2.1.1	Images	3
2.1.2	Bias	3
2.1.3	Parameters	4
2.1.4	Events	4
2.2	Compared Parameters	5
2.3	Aspect	6
2.4	Star Slots	9
2.4.1	Slot 3	9
2.4.2	Slot 4	10
2.4.3	Slot 5	11
2.4.4	Slot 6	12
2.4.5	Slot 7	13
2.5	FID Slots	14
2.5.1	Slot 0	14
2.5.2	Slot 1	15
2.5.3	Slot 2	16
A	Summary	17
A.1	Status	17
A.2	Comments	17

1 Front

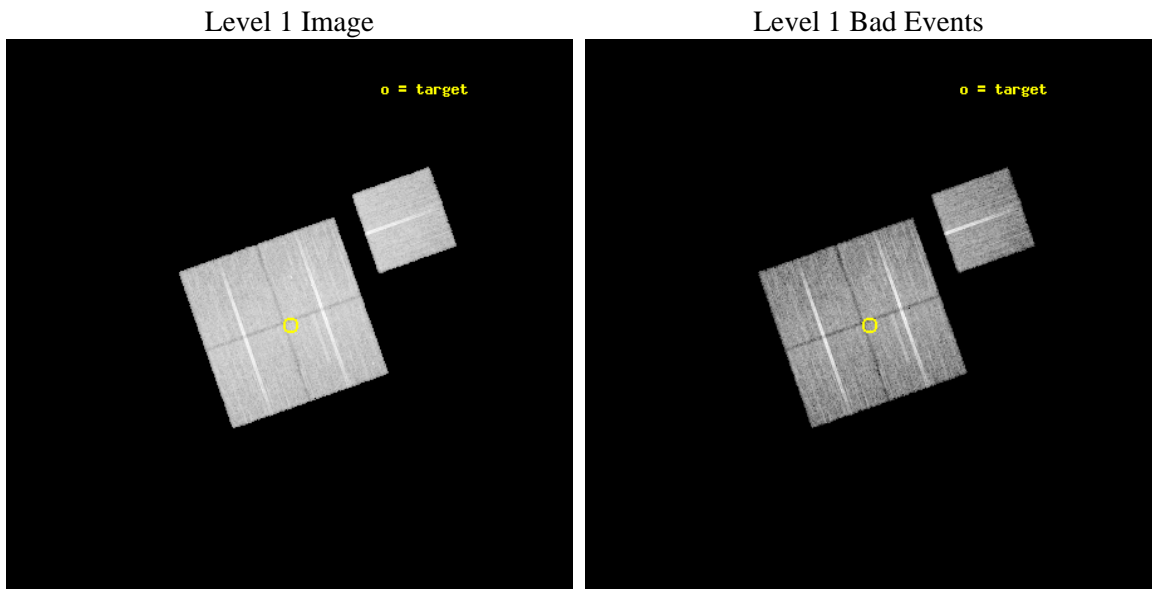
seq_num	800518	Sequence number
obs_id	5805	Observation id
title	Chandra Observations of the DLS Shear-Selected Cluster Survey	Prop
observer	Prof. John Hughes	Principal investigator
object	DLS J1400-1154	Source name
dtcycle	0	
cycle	P	events from which exps? Prim/Second/Both
ra_targ	210.085833	Observer's specified target RA [deg]
dec_targ	-11.9105	Observer's specified target Dec [deg]
ra_nom	210.08903383109	Nominal RA [deg]
dec_nom	-11.907047817831	Nominal Dec [deg]
roll_nom	70.646270408131	Nominal Roll [deg]
revision	3	Processing version of data
ontime	20047.658971161	Sum of GTIs [s]
livetime	19785.721547831	Livetime [s]
ontime0	20047.658961266	Sum of GTIs [s]
ontime1	20050.799961418	Sum of GTIs [s]
ontime2	20044.518010825	Sum of GTIs [s]
ontime3	20047.658971161	Sum of GTIs [s]
ontime6	20047.658981174	Sum of GTIs [s]
l2events	53125	Number of level 2 events



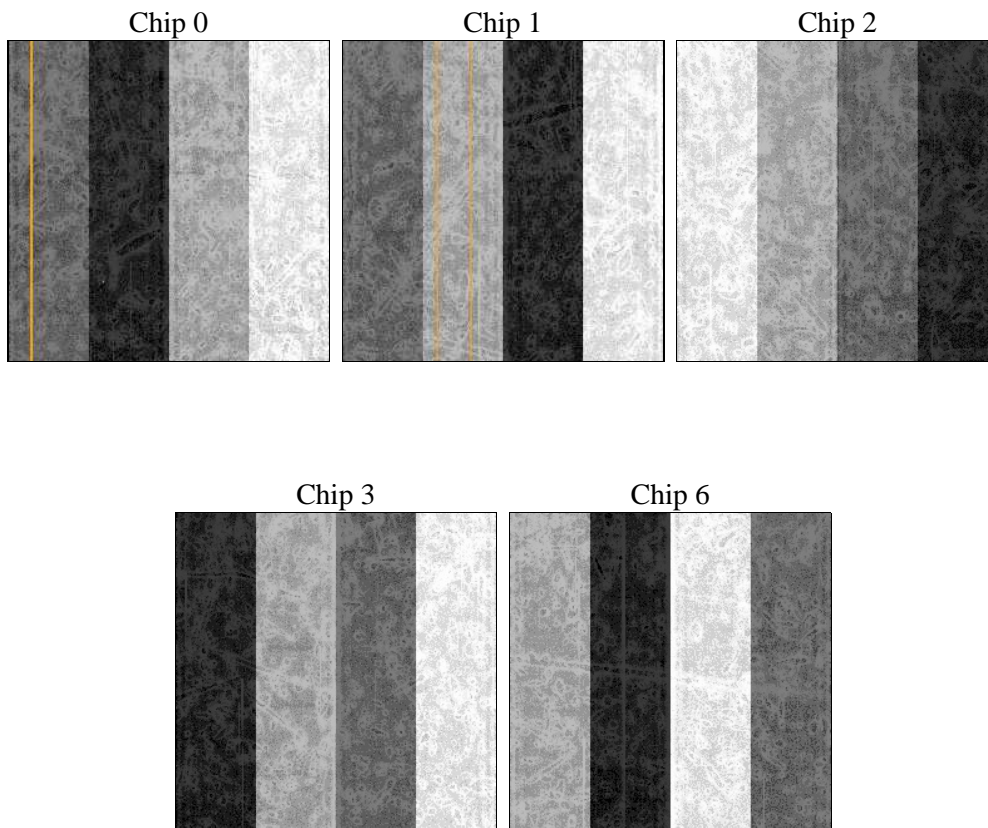
2 OBI

2.1 OBI

2.1.1 Images



2.1.2 Bias



2.1.3 Parameters

obi_num	0	Obi number	sched_exp_time	20000.000000	[s] Scheduled observation exposure time
ascdsver	8.5.1.1	Processing system revision	ontime	20047.658971161	Sum of GTIs [s]
caldbver	4.5.5	 	ontime0	20047.658961266	Sum of GTIs [s]
date	2012-12-21T01:45:50	Date and time of file creation	ontime1	20050.799961418	Sum of GTIs [s]
revision	3	Processing version of data	ontime2	20044.518010825	Sum of GTIs [s]
			ontime3	20047.658971161	Sum of GTIs [s]
			ontime6	20047.658981174	Sum of GTIs [s]
			l1events	610590	Number of level 1 events

2.1.4 Events

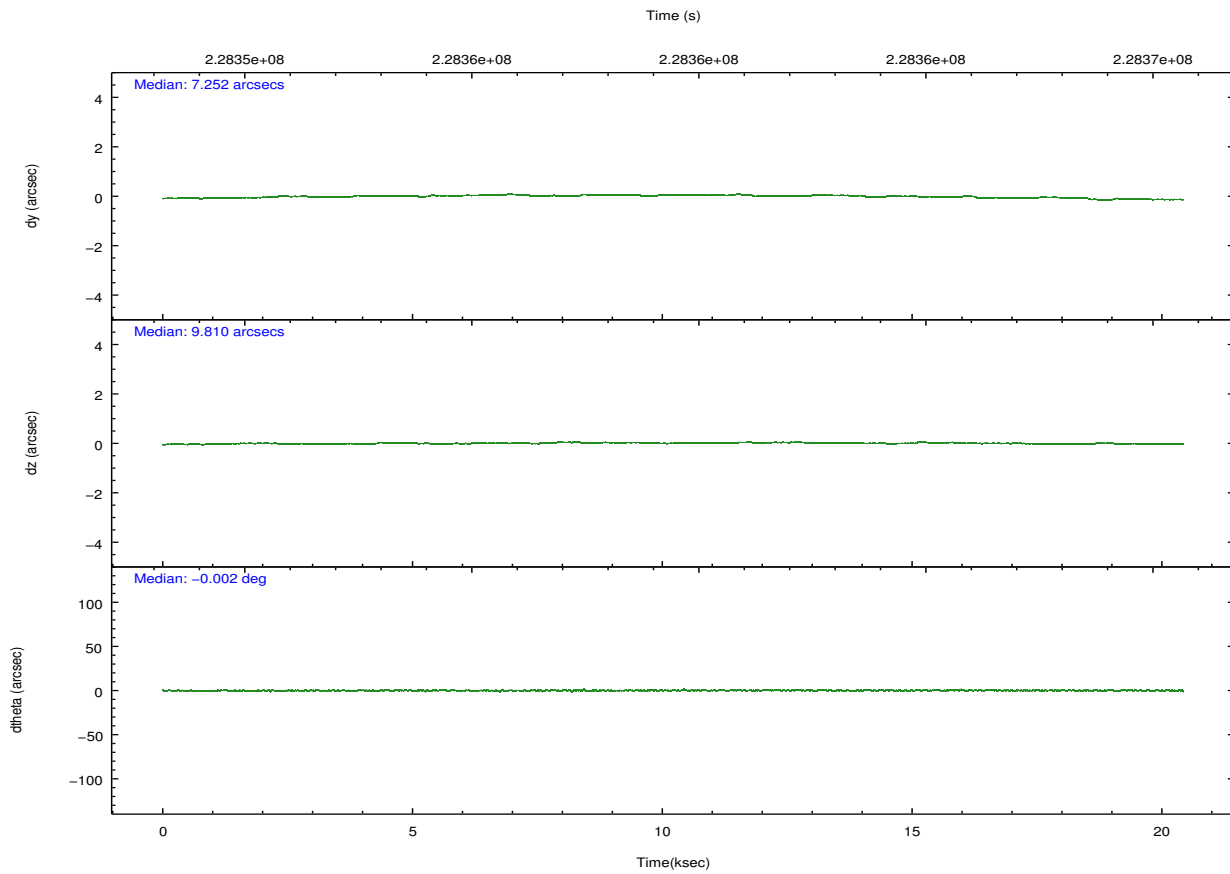
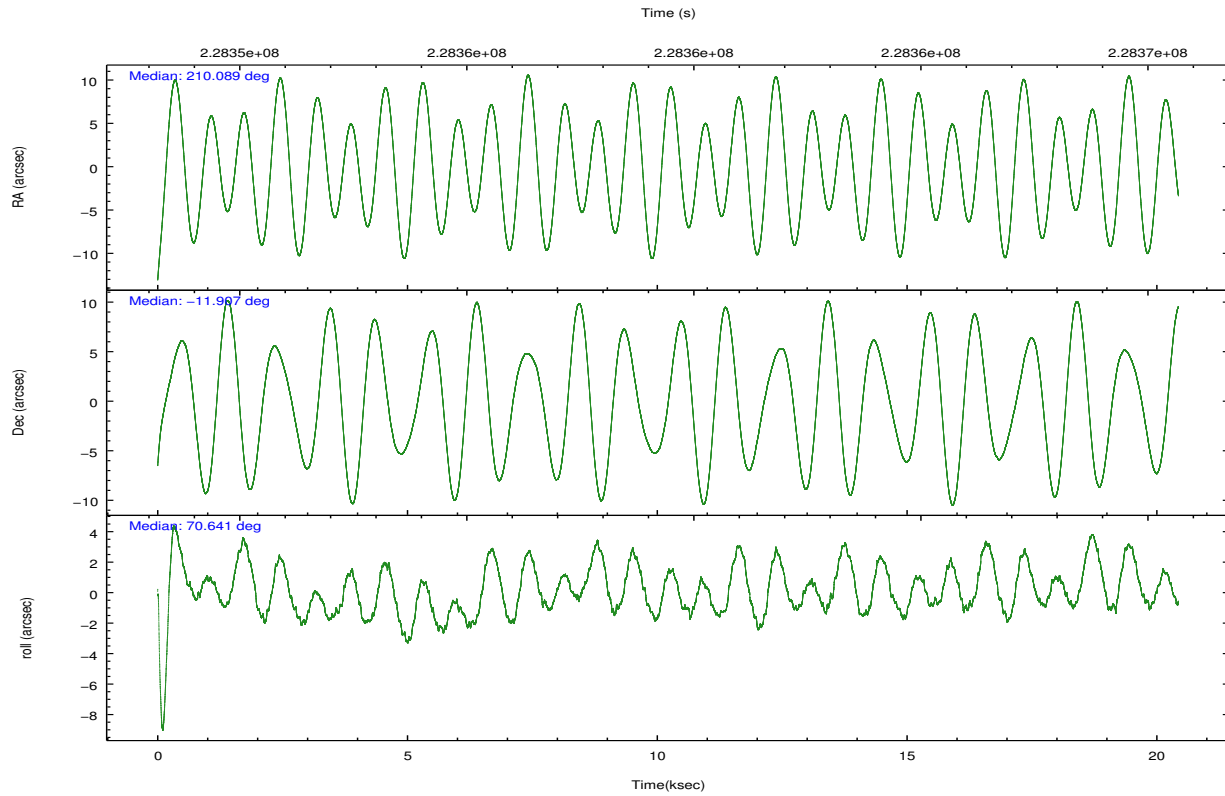
	ccd 0	ccd 1	ccd 2	ccd 3	ccd 6
level 1 events	115628	118933	130034	123875	122120
rejected events	103151	104931	117709	111903	108942
rejected %	89%	88%	90%	90%	89%

	ccd 0	ccd 1	ccd 2	ccd 3	ccd 6
grade 0 events	4300	5021	4532	4261	4960
	3%	4%	3%	3%	4%
grade 1 events	47	69	72	68	62
	0%	0%	0%	0%	0%
grade 2 events	2973	3007	2829	2539	2643
	2%	2%	2%	2%	2%
grade 3 events	1497	1607	1352	1403	1390
	1%	1%	1%	1%	1%
grade 4 events	1365	1588	1389	1381	1462
	1%	1%	1%	1%	1%
grade 5 events	4345	4683	4141	4874	4890
	3%	3%	3%	3%	4%
grade 6 events	2346	2783	2226	2391	2724
	2%	2%	1%	1%	2%
grade 7 events	98755	100175	113493	106958	103989
	85%	84%	87%	86%	85%

2.2 Compared Parameters

Parameter	Planned	Actual	Parameter	Planned	Actual
Instrument	ACIS	ACIS	Obspar format version number	7	7
Detector	ACIS-01236	ACIS-01236	Obspar file type	PREDICTED	ACTUAL
Grating	NONE	NONE	Obspar update status	NONE	UPDATED
Data mode	VFAINT	VFAINT	Number of optional ACIS chips dropped	0	0
Observation mode	POINTING	POINTING	On-chip summing requested	N	N
[deg] Pointing RA	210.094306	210.0890338310851	Subarray requested	NONE	NONE
[deg] Pointing Dec	-11.933957	-11.90704781783139	Alternating exposures requested	N	N
[deg] Pointing Roll	70.438666	70.64627040813127	[s] Primary exposure time	0.000000	3.1
[mm] SIM focus pos	-0.782348	-0.7809083437167272			
[mm] SIM defocus	0	0.001439871863259334			
[mm] SIM translation stage pos	-233.592463	-233.5874344608287			
[mm] SIM translation stage offset	0	-0.005018542100998502			
[s] Observation start time (MET)	228349648.184000	228348593.56029			
Observation start date	2005-03-27T22:26:24	2005-03-27T22:09:53			
[s] Observation end time (MET)	228369648.184000	228370530.09878			
Observation end date	2005-03-28T03:59:44	2005-03-28T04:15:30			
Read mode	TIMED	TIMED			

2.3 Aspect

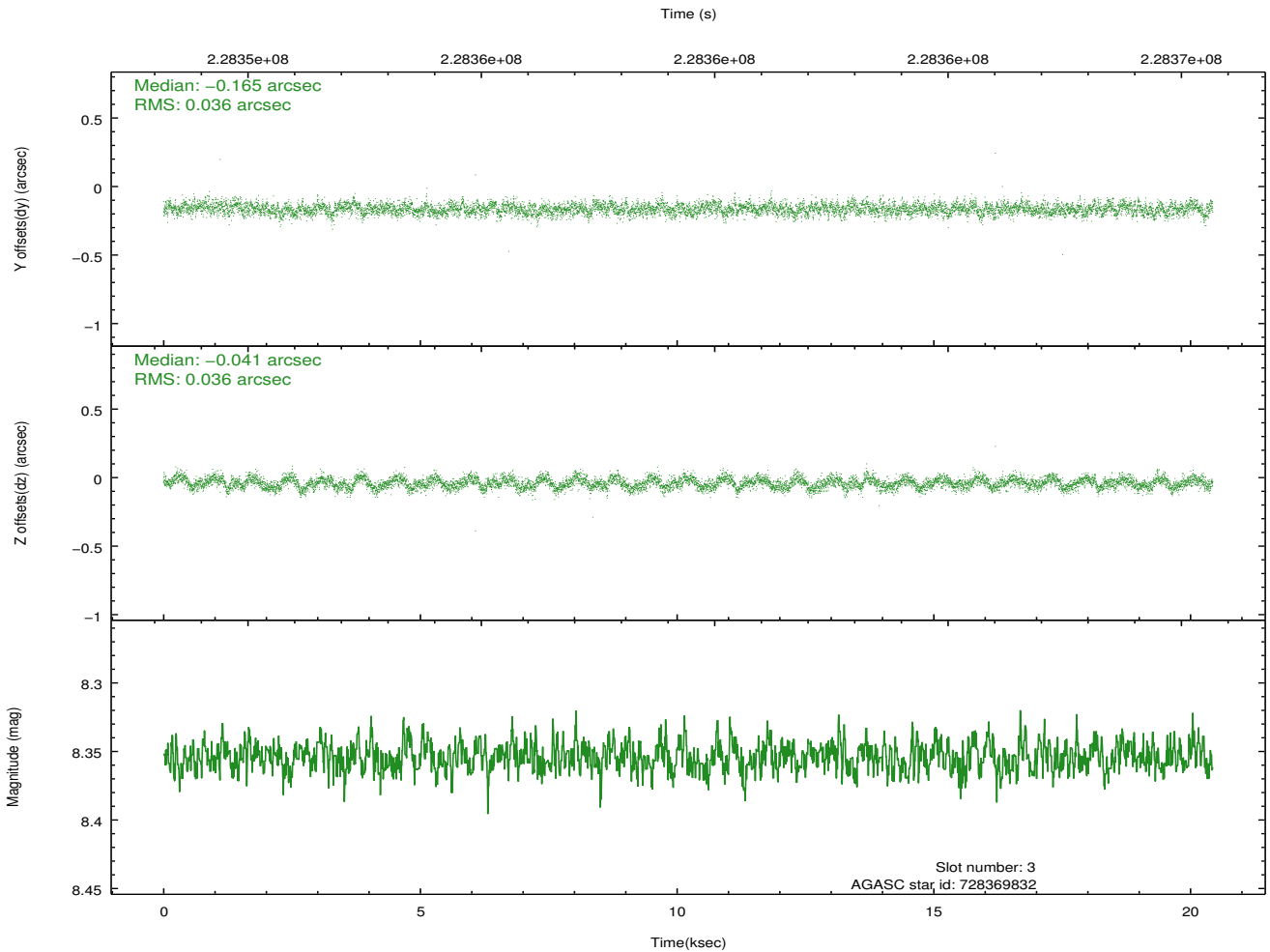
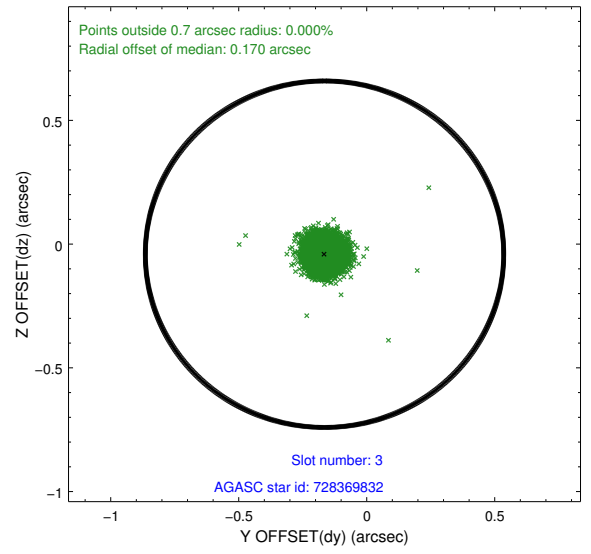
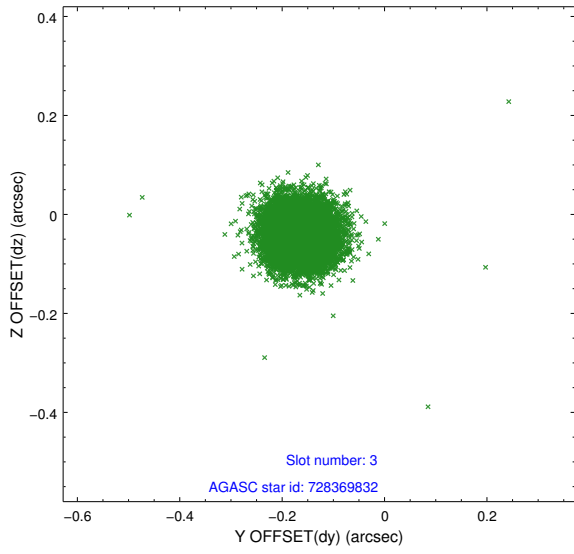


Slot Statistics

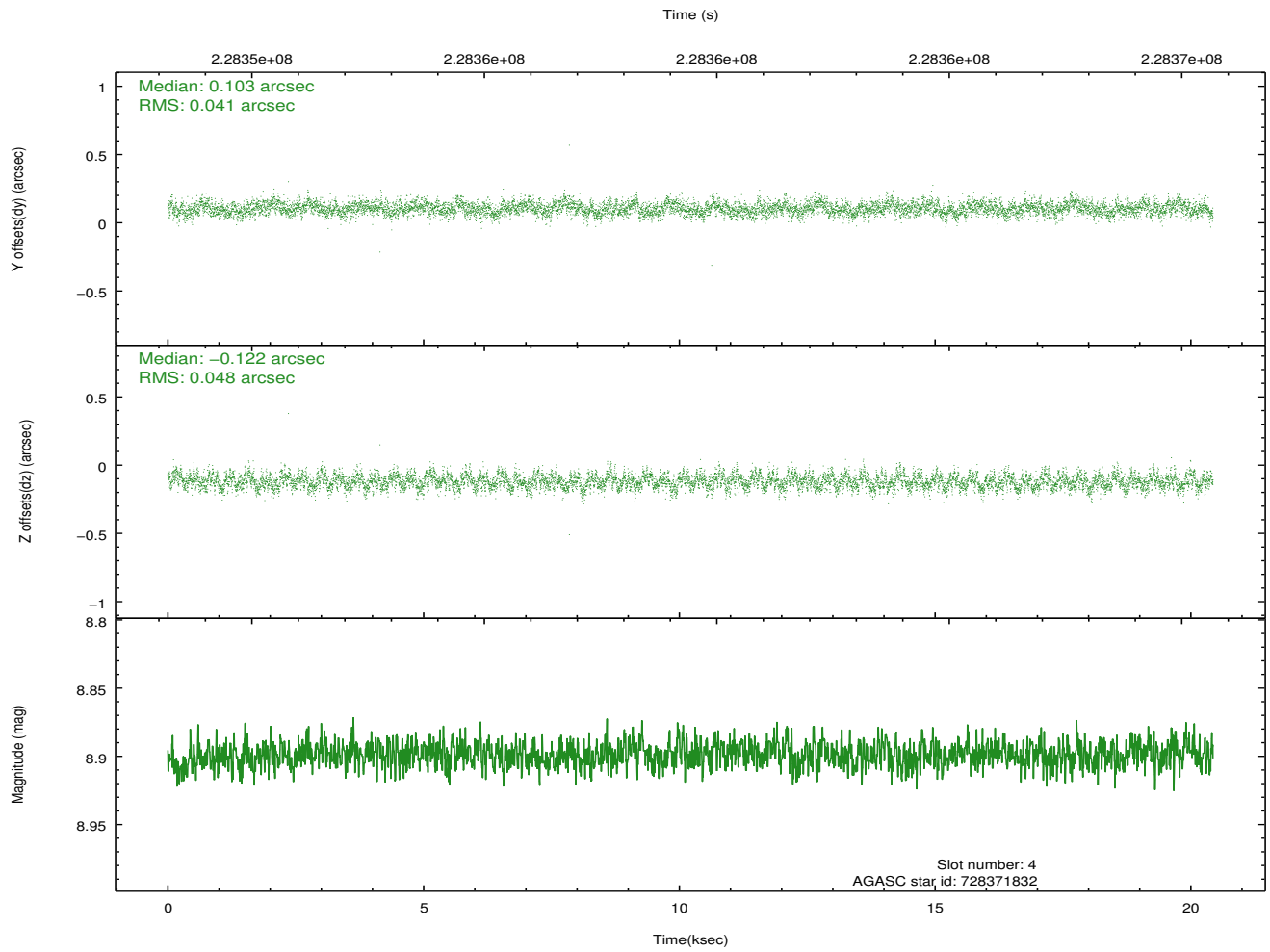
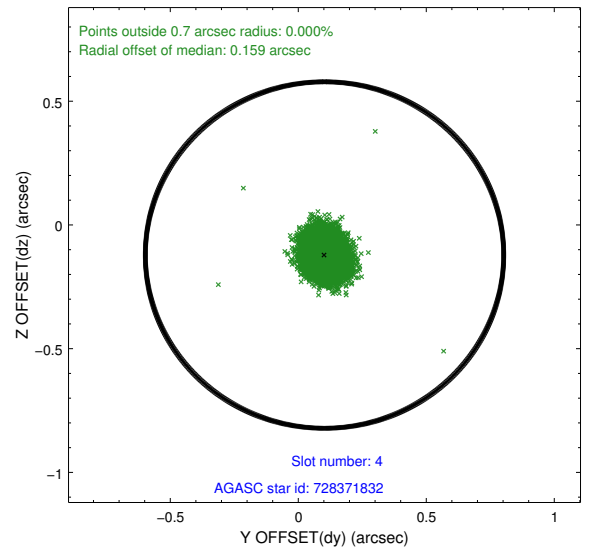
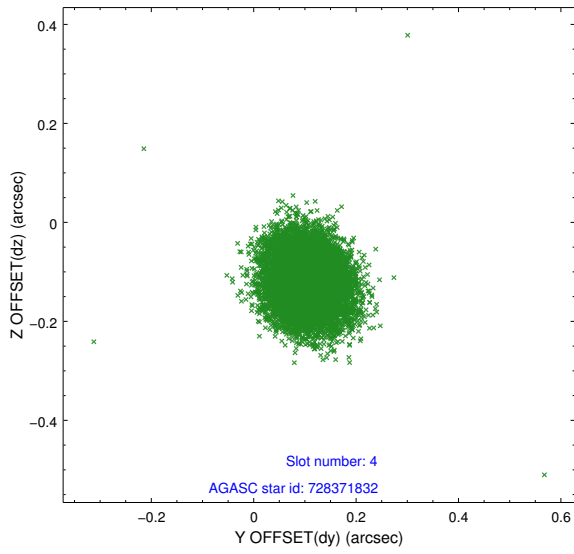
slot	status	id	mag	n_pts	med_dy	med_dz	dr1	dr2	ra	dec	mean_y	mean_z
0	FID	ACIS-I-1	7.24	4983	-0.000	0.027	0.007	0.014	0.000000	0.000000	932.44	-833.25
1	FID	ACIS-I-5	7.23	4984	-0.154	0.024	0.006	0.013	0.000000	0.000000	-1815.73	1064.14
2	FID	ACIS-I-6	7.26	4984	0.063	0.020	0.007	0.013	0.000000	0.000000	397.85	1708.85
3	GUIDE	728369832	8.35	9968	-0.165	-0.041	0.054	0.085	210.251544	-11.309313	2304.67	230.10
4	GUIDE	728371832	8.90	9964	0.103	-0.122	0.067	0.108	209.897863	-12.042023	-597.78	521.33
5	GUIDE	728372656	8.76	9965	0.017	-0.144	0.086	0.134	210.015112	-11.785768	409.05	441.23
6	GUIDE	728379152	8.74	9967	0.005	0.229	0.074	0.117	210.583539	-12.037125	225.84	-1747.57
7	GUIDE	728379784	8.97	9962	0.037	0.079	0.068	0.111	210.298585	-11.930388	253.21	-673.70

2.4 Star Slots

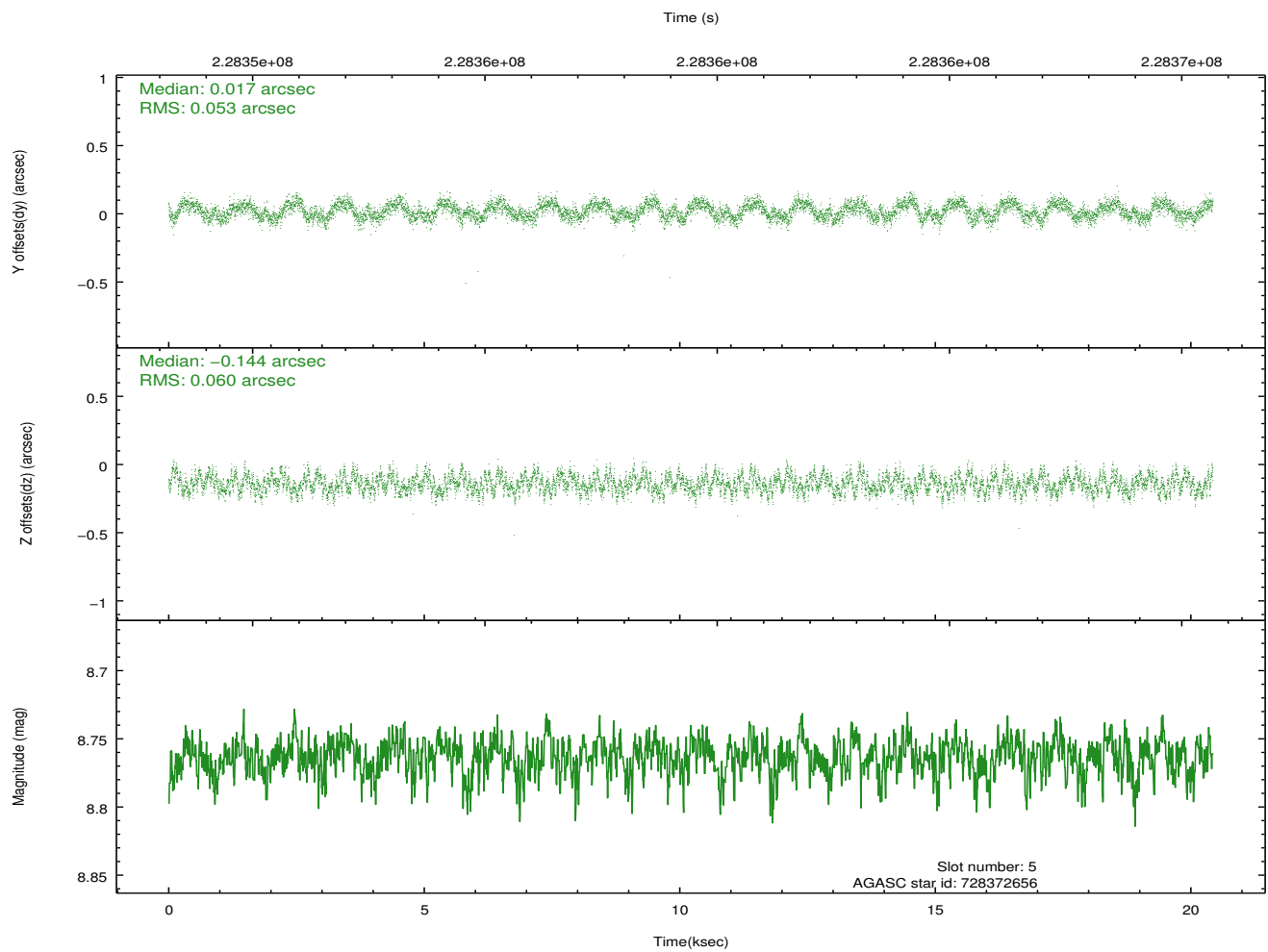
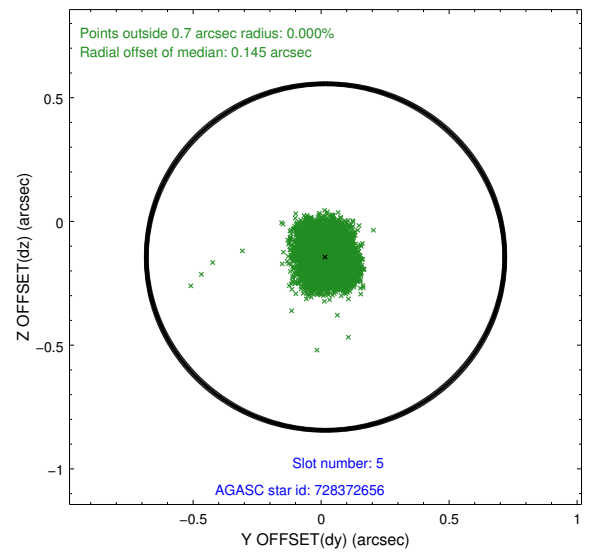
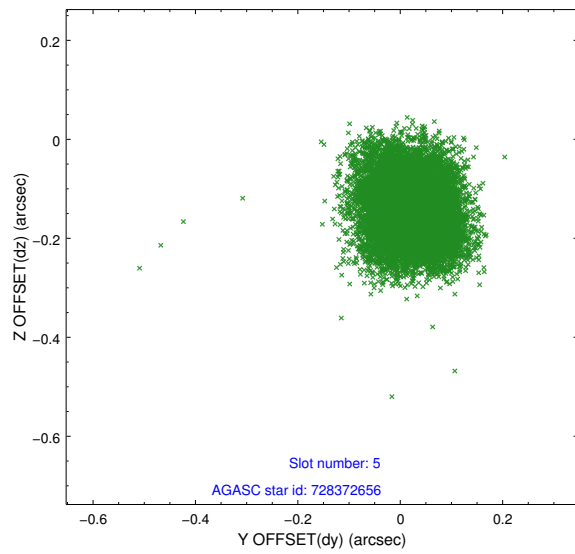
2.4.1 Slot 3



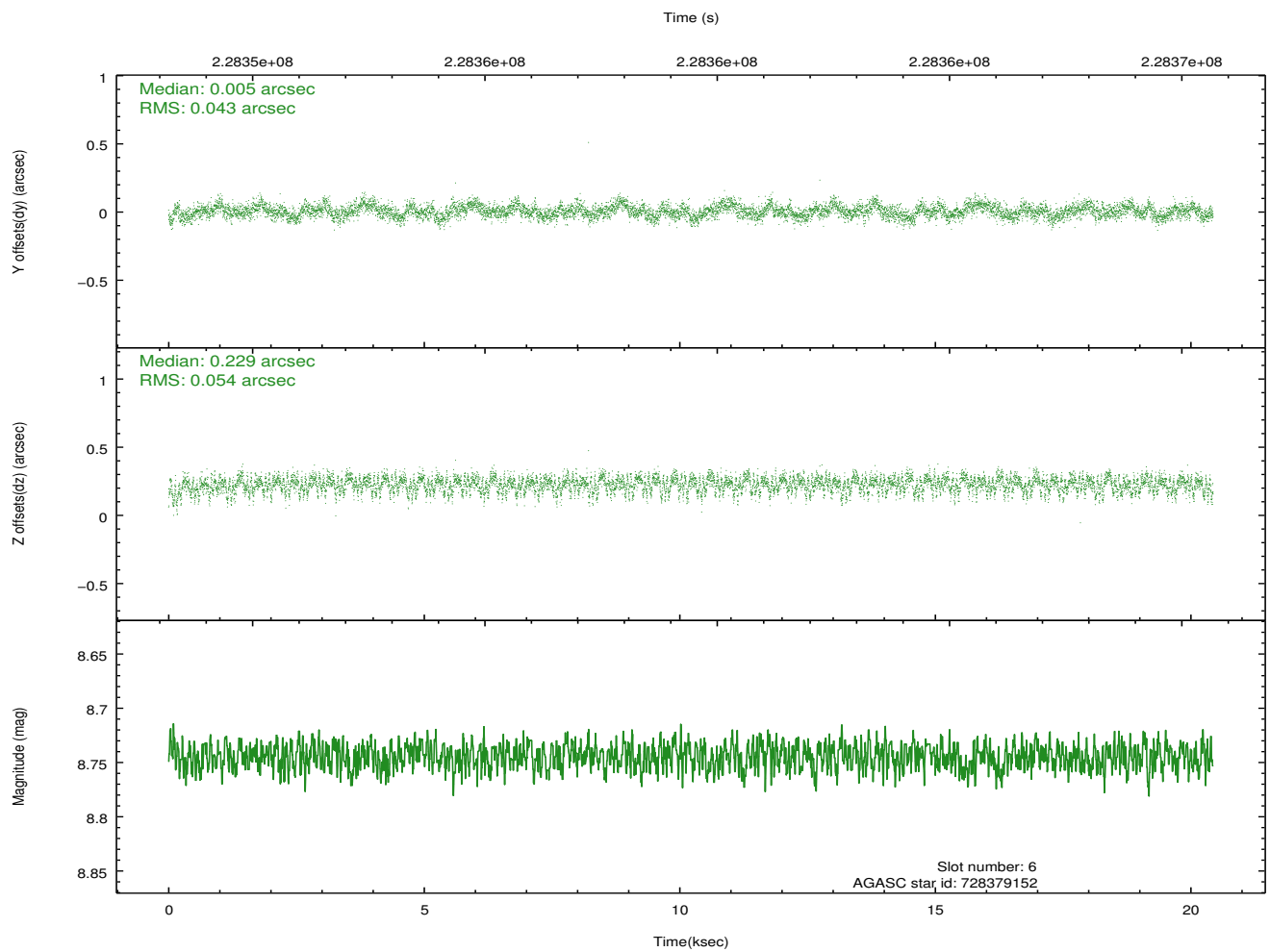
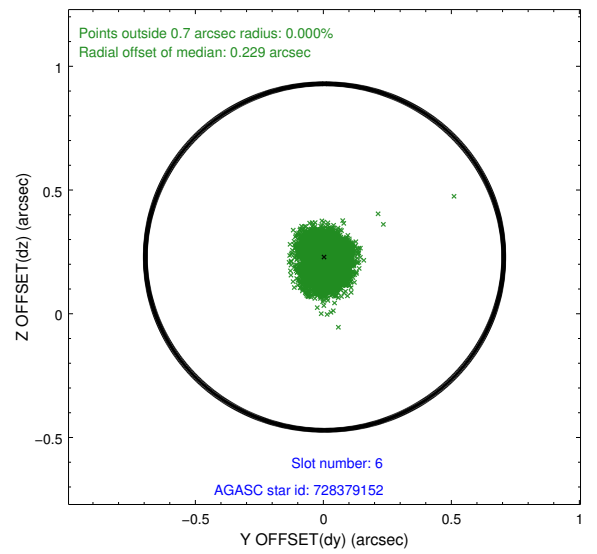
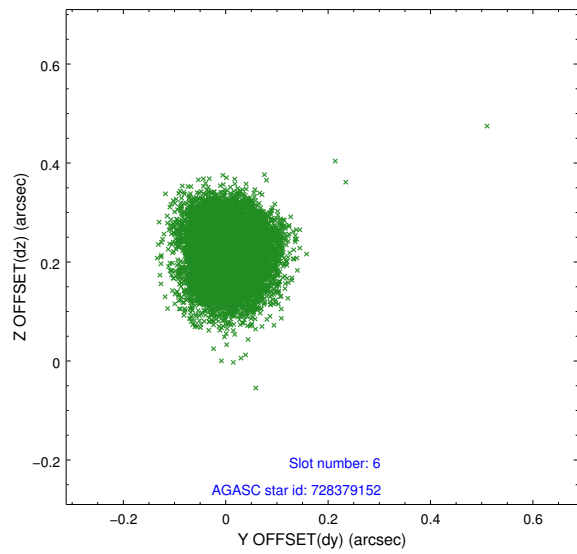
2.4.2 Slot 4



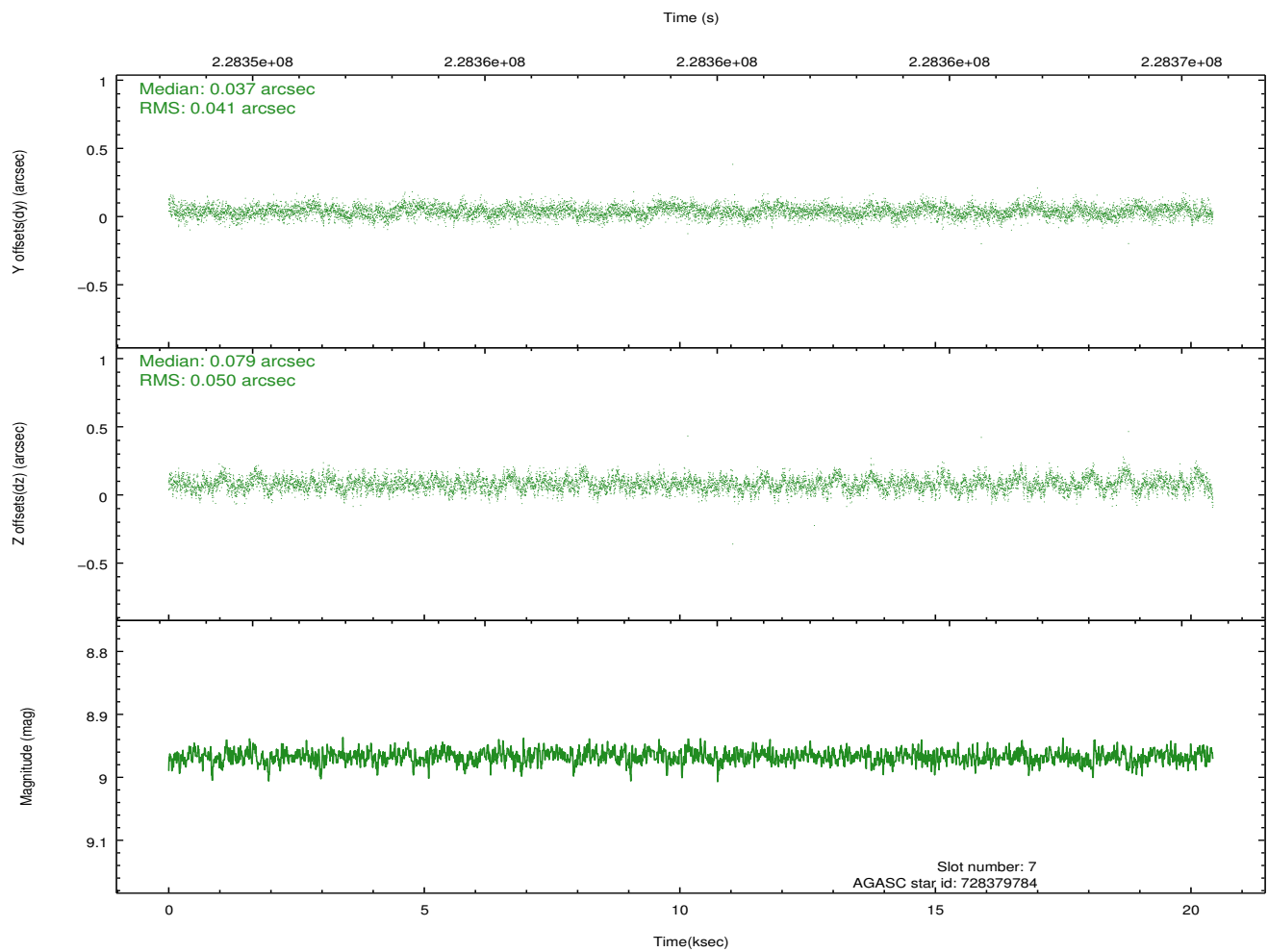
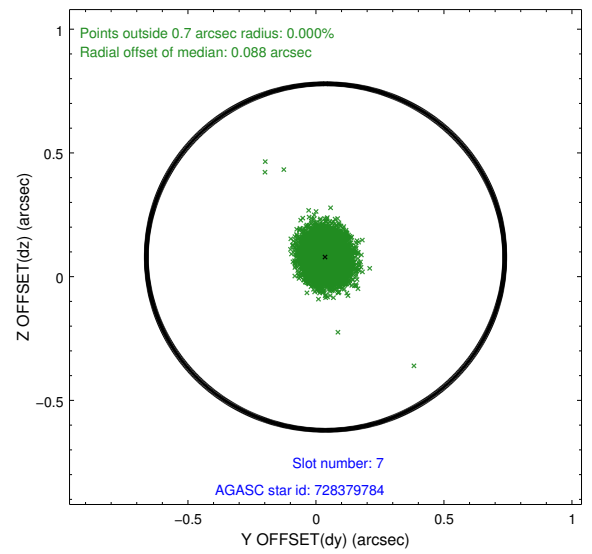
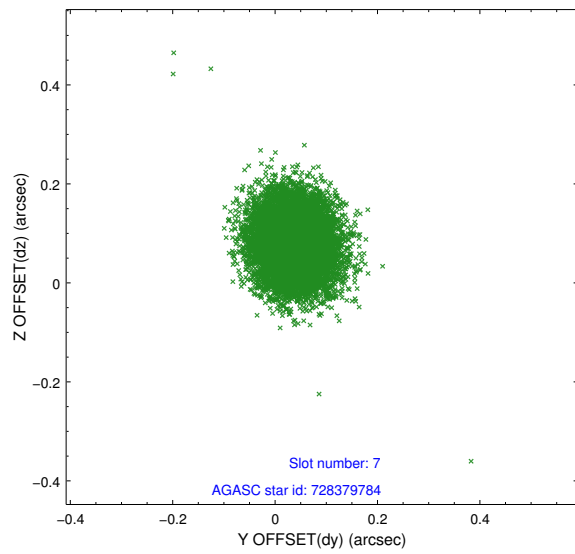
2.4.3 Slot 5



2.4.4 Slot 6

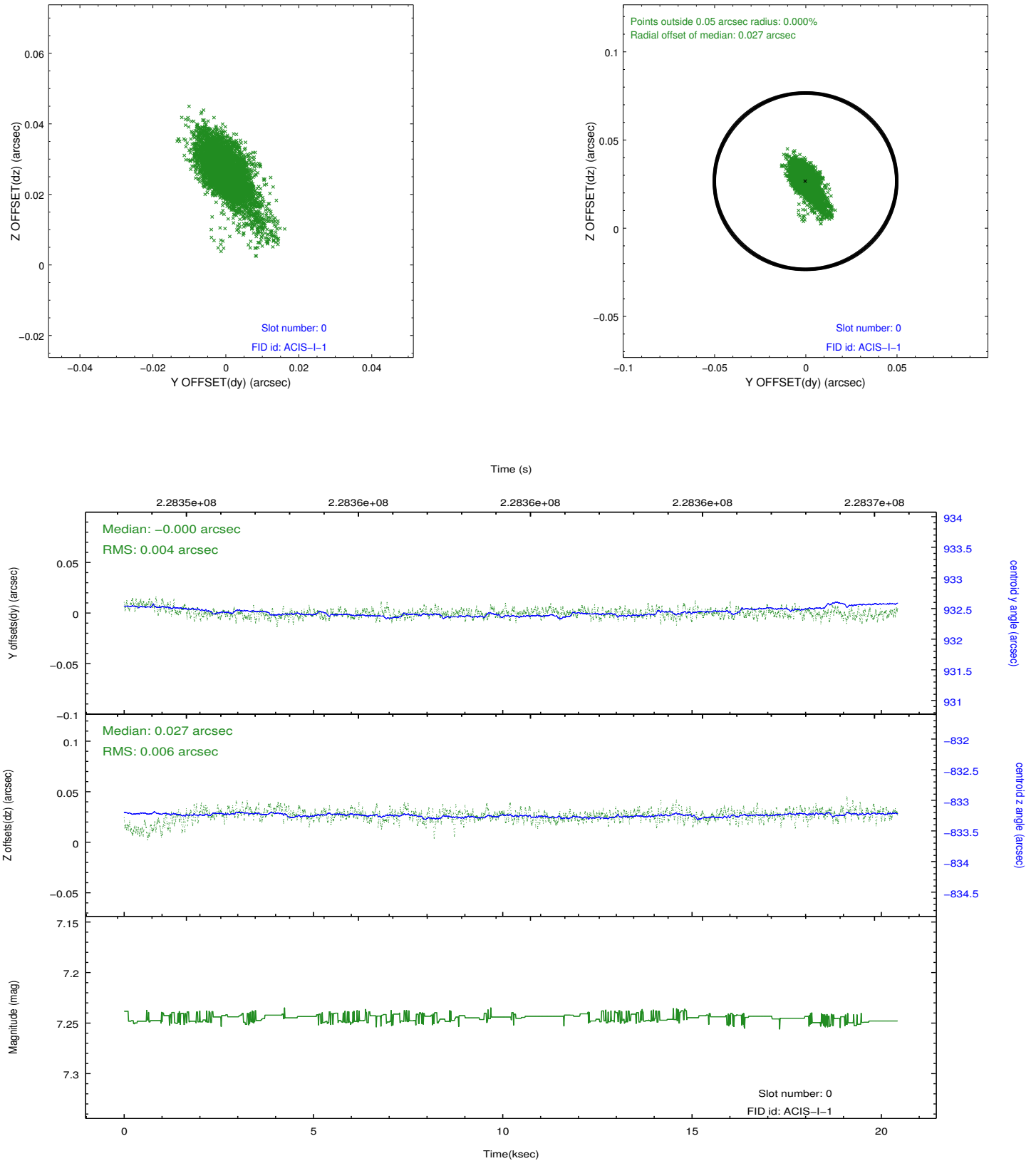


2.4.5 Slot 7

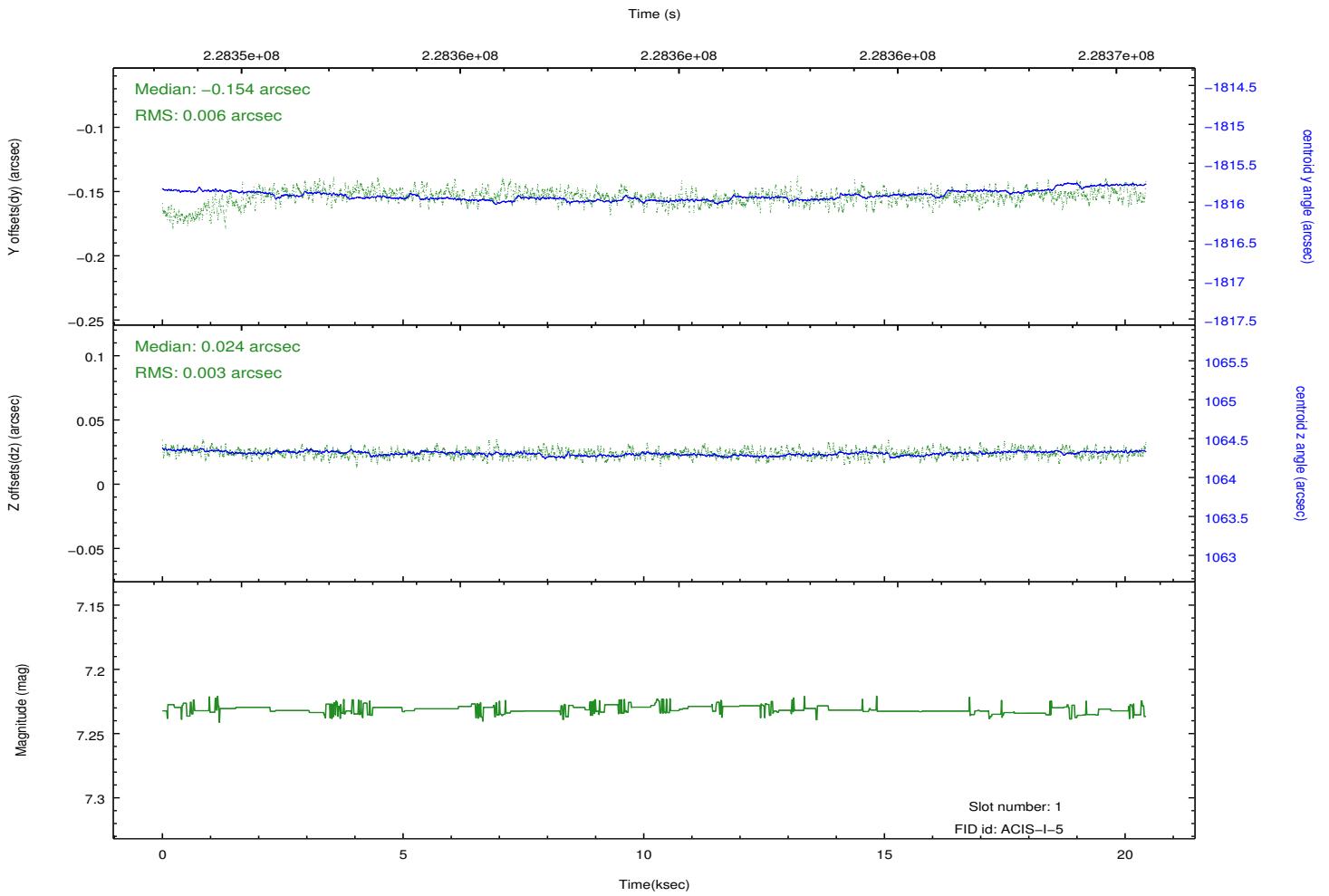
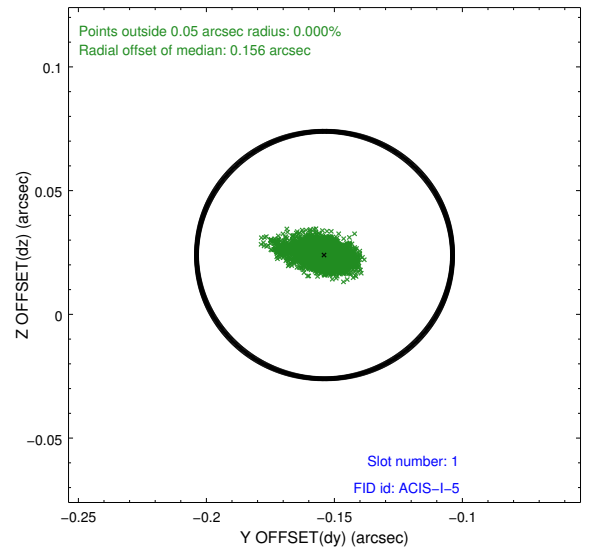
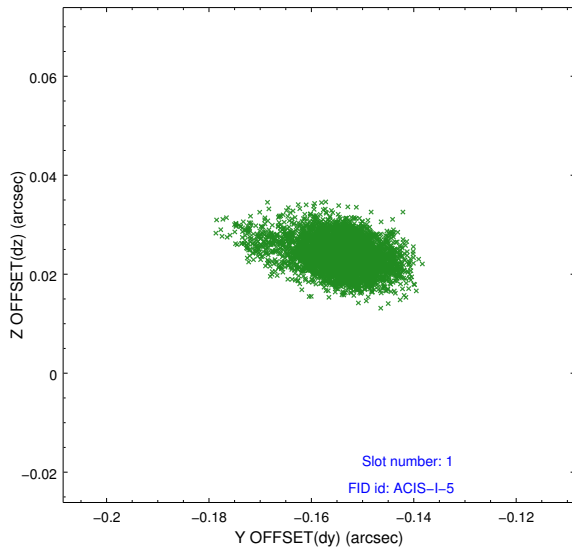


2.5 FID Slots

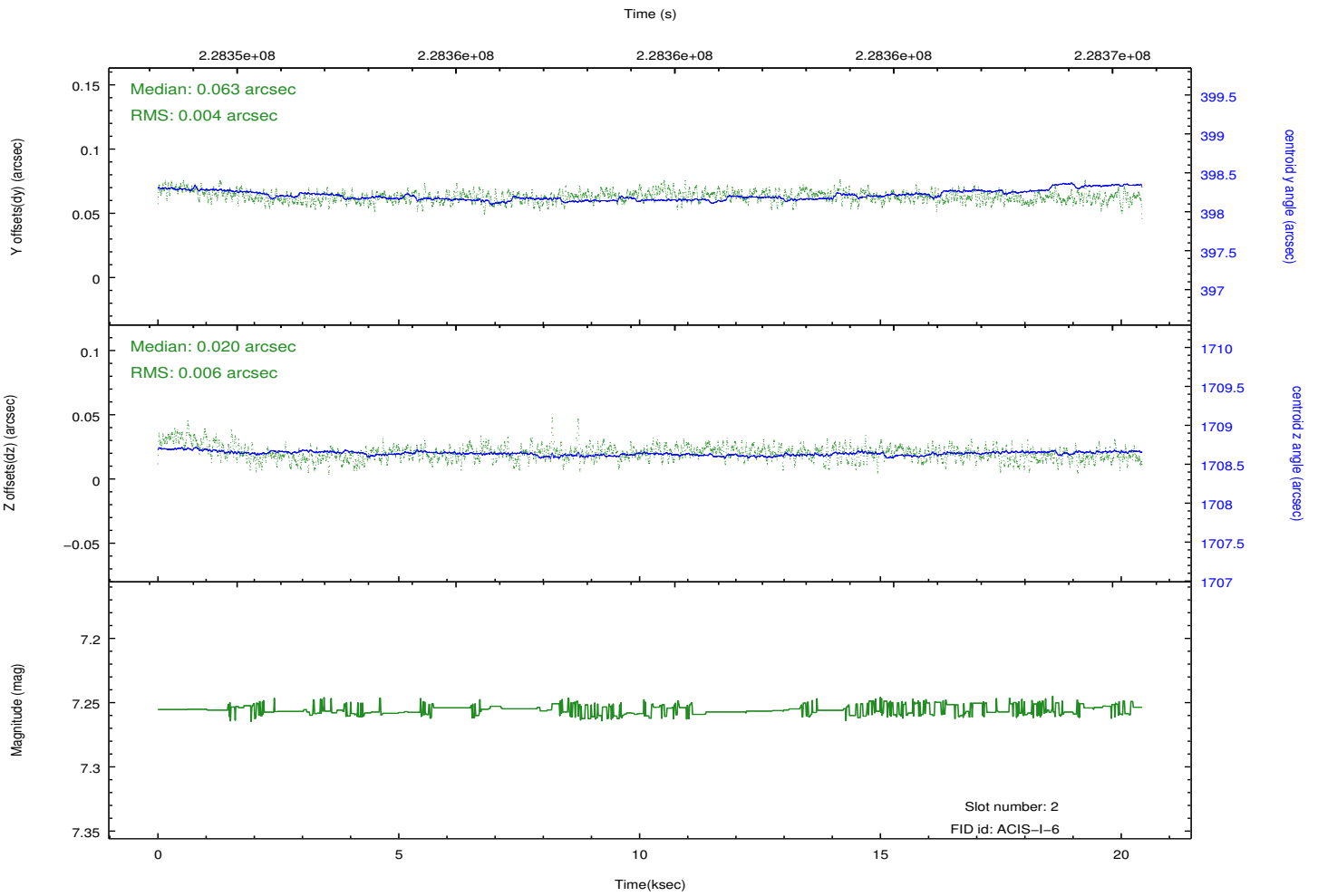
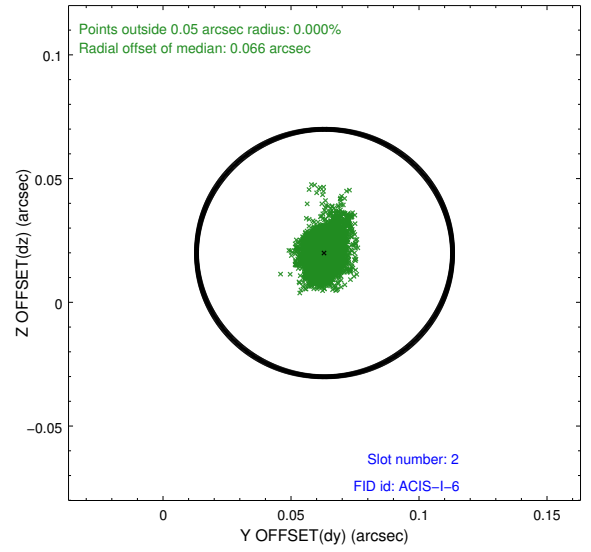
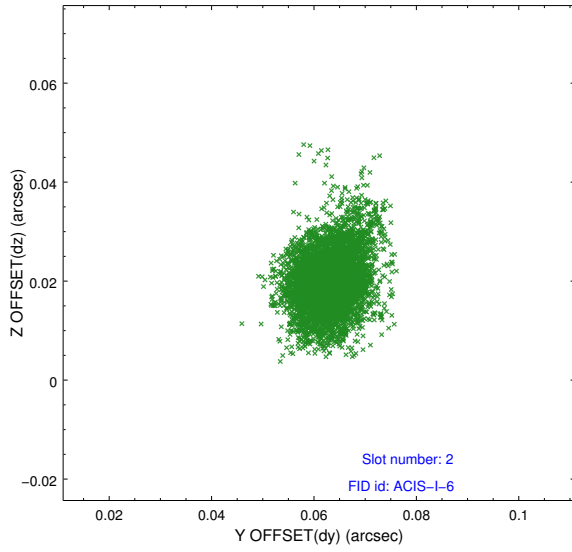
2.5.1 Slot 0



2.5.2 Slot 1



2.5.3 Slot 2



A Summary

A.1 Status

V&V Scientist	Jen Lauer
V&V Date (YYYY-MM-DD)	2013.01.14
V&V Edition	1
V&V Disposition and Status	OK
V&V Charge Time	20.04765

A.2 Comments