

V&V Reference Report

L2 ASCDS Version : 8.5.1.1

Observation 6105 - L2 Version 3
Chandra X-Ray Center

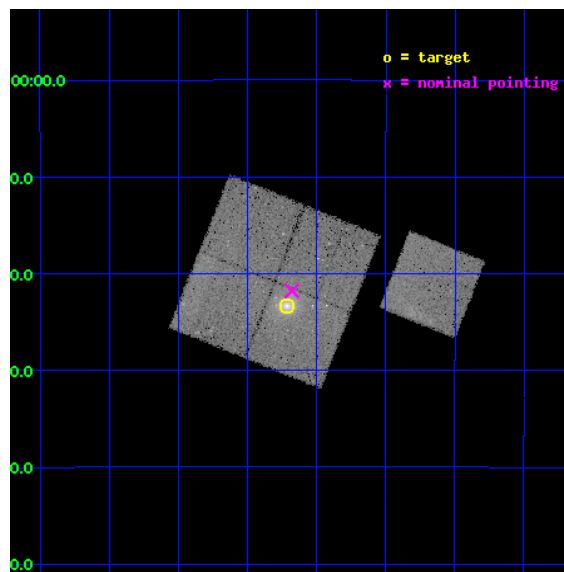
L2 Processing Date : Dec 25 2012

Contents

1	Front	2
2	OBI	3
2.1	OBI	3
2.1.1	Images	3
2.1.2	Bias	3
2.1.3	Parameters	4
2.1.4	Events	4
2.2	Compared Parameters	5
2.3	Aspect	6
2.4	Star Slots	9
2.4.1	Slot 3	9
2.4.2	Slot 4	10
2.4.3	Slot 5	11
2.4.4	Slot 6	12
2.4.5	Slot 7	13
2.5	FID Slots	14
2.5.1	Slot 0	14
2.5.2	Slot 1	15
2.5.3	Slot 2	16
A	Summary	17
A.1	Status	17
A.2	Comments	17

1 Front

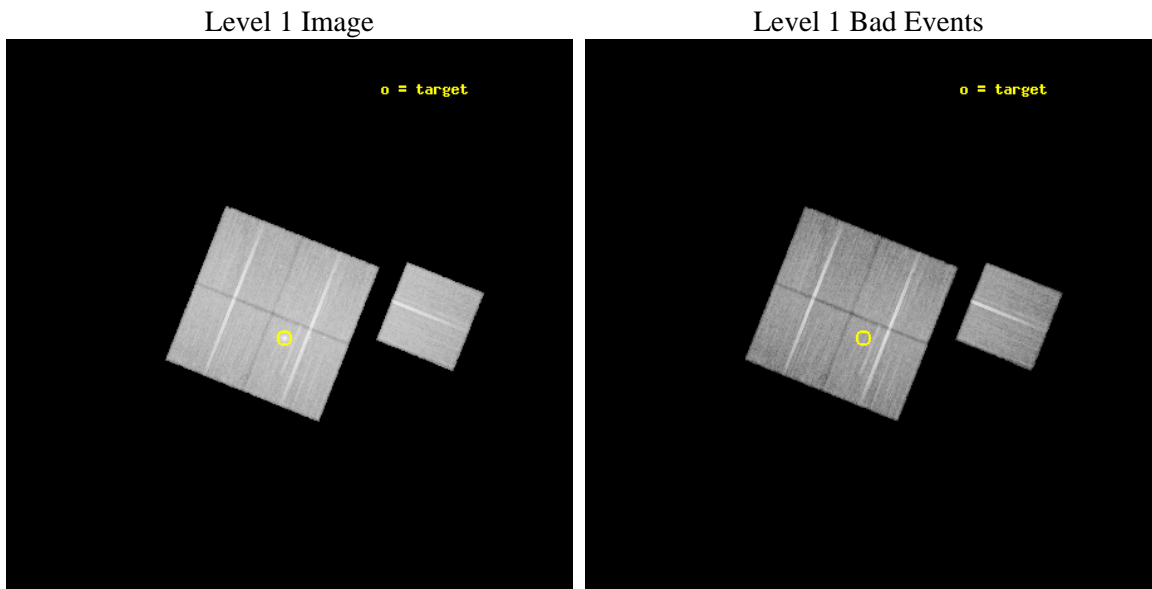
seq_num	800553	Sequence number
obs_id	6105	Observation id
title	Probing dark energy using the X-ray gas mass fraction in dynamically relaxed galaxy clusters	Proposal title
observer	Prof. Steven Allen	Principal investigator
object	MACS0011.7-1523	Source name
dtcycle	0	
cycle	P	events from which exps? Prim/Second/Both
ra_targ	2.92875	Observer's specified target RA [deg]
dec_targ	-15.389444	Observer's specified target Dec [deg]
ra_nom	2.9199759866162	Nominal RA [deg]
dec_nom	-15.363092846572	Nominal Dec [deg]
roll_nom	111.72915168629	Nominal Roll [deg]
revision	3	Processing version of data
ontime	37770.358957082	Sum of GTIs [s]
livetime	37276.861411174	Livetime [s]
ontime0	37763.971627593	Sum of GTIs [s]
ontime1	37757.730707109	Sum of GTIs [s]
ontime2	37767.194687843	Sum of GTIs [s]
ontime3	37770.358957082	Sum of GTIs [s]
ontime6	37767.071577758	Sum of GTIs [s]
l2events	116752	Number of level 2 events



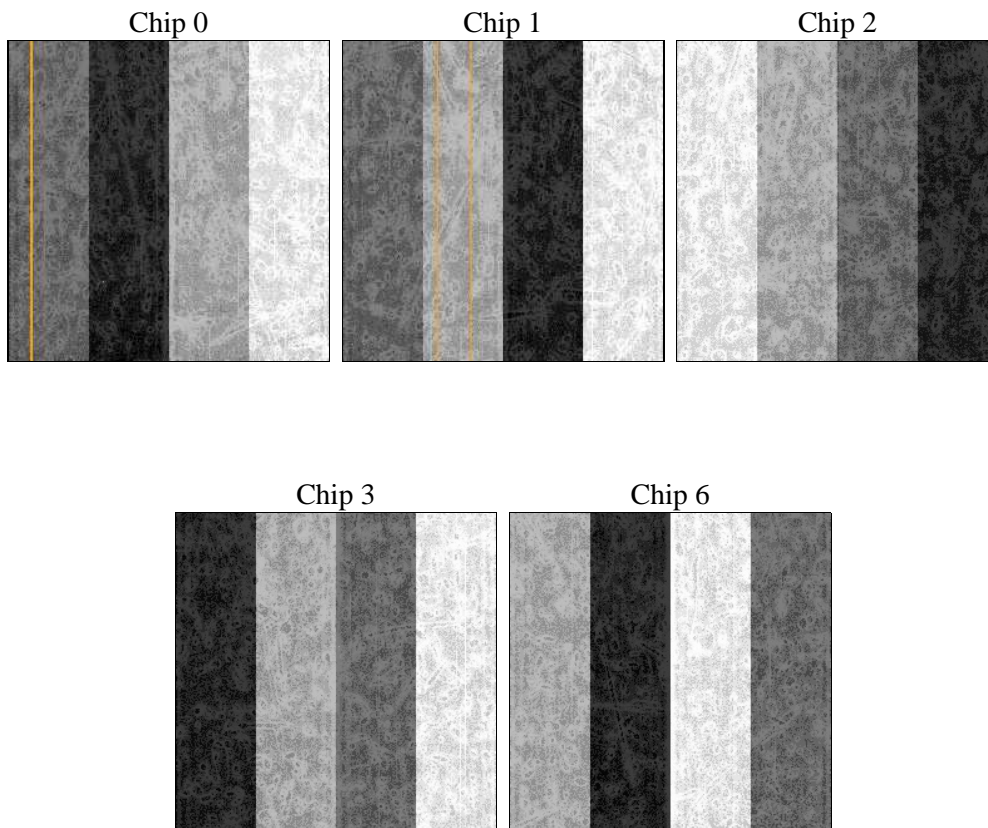
2 OBI

2.1 OBI

2.1.1 Images



2.1.2 Bias



2.1.3 Parameters

obi_num	3	Obi number	sched_exp_time	38000.000000	[s] Scheduled observation exposure time
ascdsver	8.5.1.1	Processing system revision	ontime	37770.358957082	Sum of GTIs [s]
caldbver	4.5.5	 	ontime0	37763.971627593	Sum of GTIs [s]
date	2012-12-25T08:49:02	Date and time of file creation	ontime1	37757.730707109	Sum of GTIs [s]
revision	3	Processing version of data	ontime2	37767.194687843	Sum of GTIs [s]
			ontime3	37770.358957082	Sum of GTIs [s]
			ontime6	37767.071577758	Sum of GTIs [s]
			l1events	1237831	Number of level 1 events

2.1.4 Events

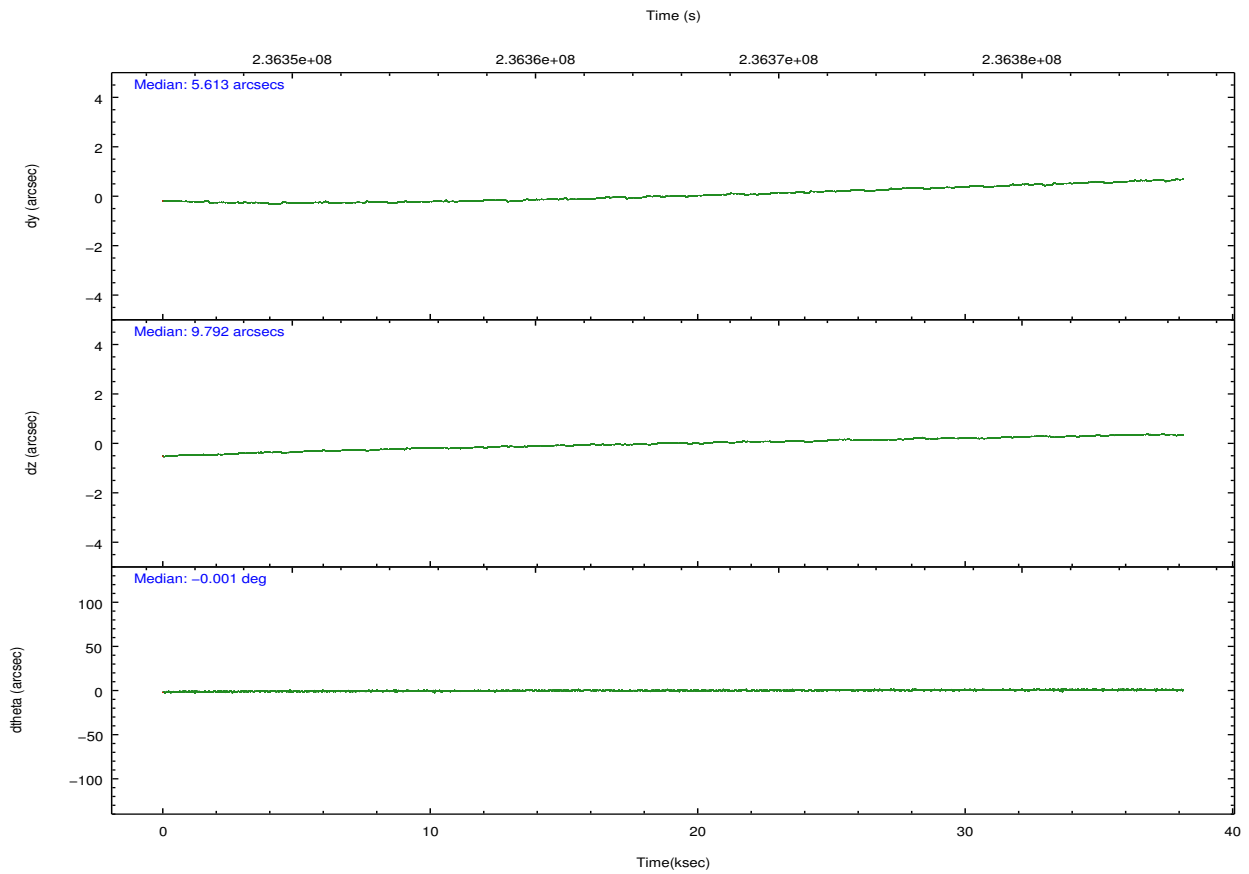
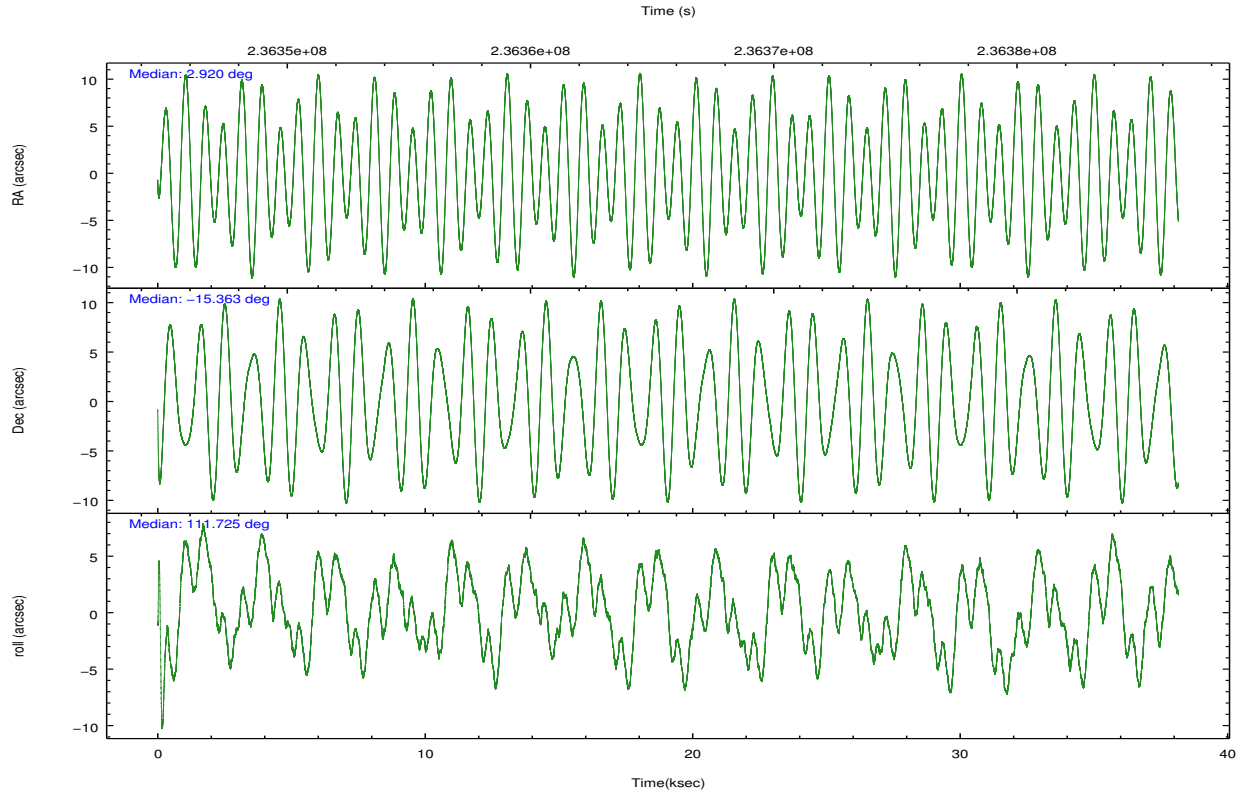
	ccd 0	ccd 1	ccd 2	ccd 3	ccd 6
level 1 events	228259	235383	260820	265785	247584
rejected events	203457	207476	236298	230041	221971
rejected %	89%	88%	90%	86%	89%

	ccd 0	ccd 1	ccd 2	ccd 3	ccd 6
grade 0 events	8512	10293	8993	18455	9122
	3%	4%	3%	6%	3%
grade 1 events	107	133	150	192	103
	0%	0%	0%	0%	0%
grade 2 events	5986	5944	5866	6373	5465
	2%	2%	2%	2%	2%
grade 3 events	2873	3121	2561	3020	2855
	1%	1%	0%	1%	1%
grade 4 events	2594	3013	2679	2965	2810
	1%	1%	1%	1%	1%
grade 5 events	8756	9530	8261	9999	9658
	3%	4%	3%	3%	3%
grade 6 events	4840	5541	4426	4934	5362
	2%	2%	1%	1%	2%
grade 7 events	194591	197808	227884	219847	212209
	85%	84%	87%	82%	85%

2.2 Compared Parameters

Parameter	Planned	Actual	Parameter	Planned	Actual
Instrument	ACIS	ACIS	Obspar format version number	7	7
Detector	ACIS-01236	ACIS-01236	Obspar file type	PREDICTED	ACTUAL
Grating	NONE	NONE	Obspar update status	NONE	UPDATED
Data mode	VFAINT	VFAINT	Number of optional ACIS chips dropped	0	0
Observation mode	POINTING	POINTING	On-chip summing requested	N	N
[deg] Pointing RA	2.942343	2.919975986616237	Subarray requested	NONE	NONE
[deg] Pointing Dec	-15.379975	-15.36309284657237	Alternating exposures requested	N	N
[deg] Pointing Roll	111.526395	111.7291516862916	[s] Primary exposure time	0.000000	3.1
[mm] SIM focus pos	-0.782348	-0.7809083437167272			
[mm] SIM defocus	0	0.001439871863259334			
[mm] SIM translation stage pos	-229.442463	-229.4438428438578			
[mm] SIM translation stage offset	-4.15	-4.148610159071865			
[s] Observation start time (MET)	236346739.184000	236345815.61202			
Observation start date	2005-06-28T11:51:15	2005-06-28T11:36:55			
[s] Observation end time (MET)	236384739.184000	236385654.80135			
Observation end date	2005-06-28T22:24:35	2005-06-28T22:40:54			
Read mode	TIMED	TIMED			

2.3 Aspect

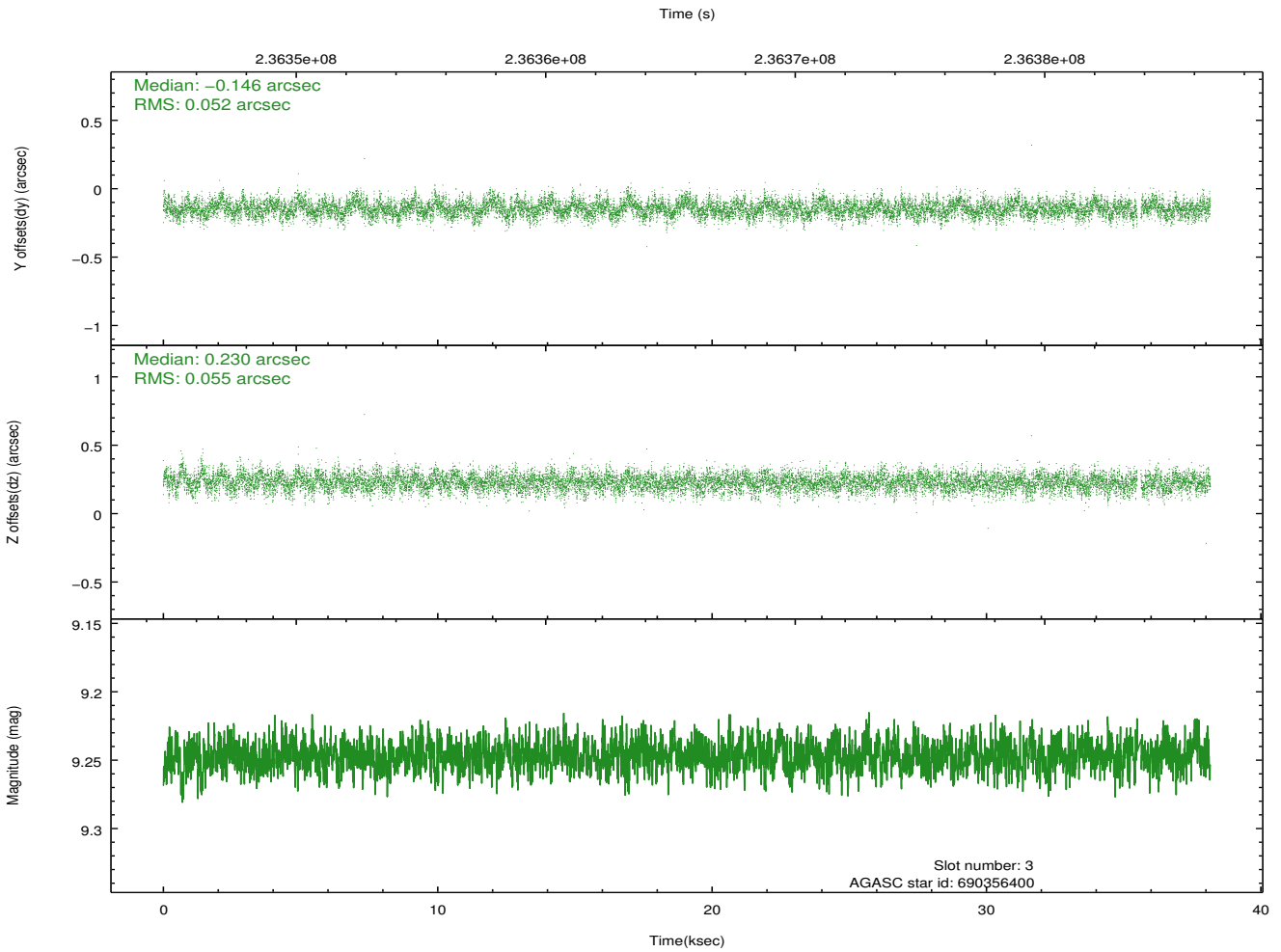
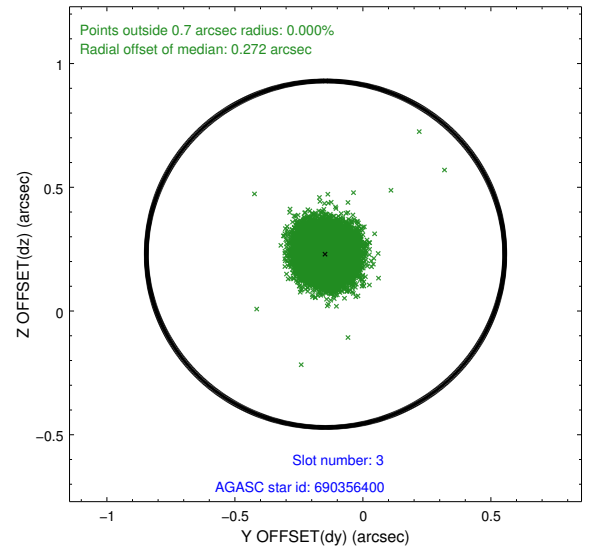
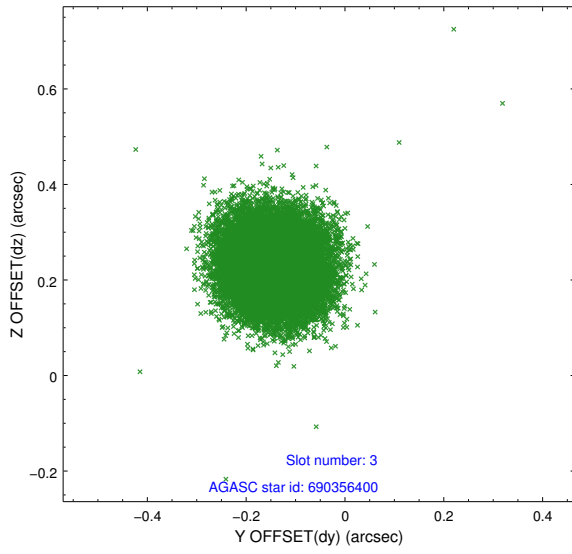


Slot Statistics

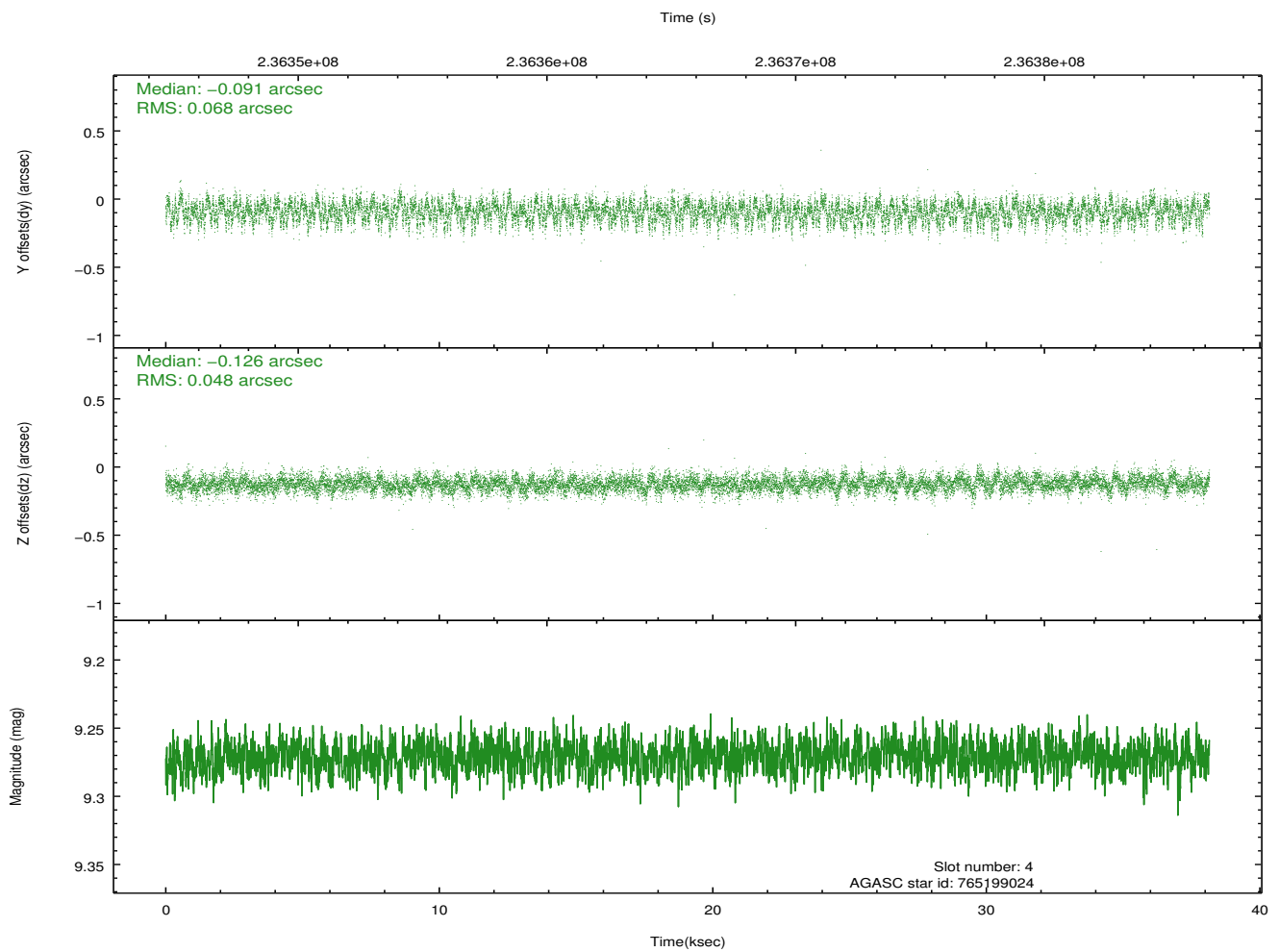
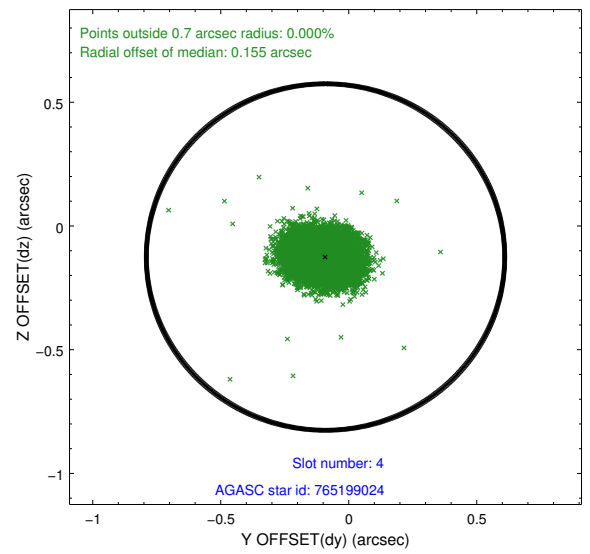
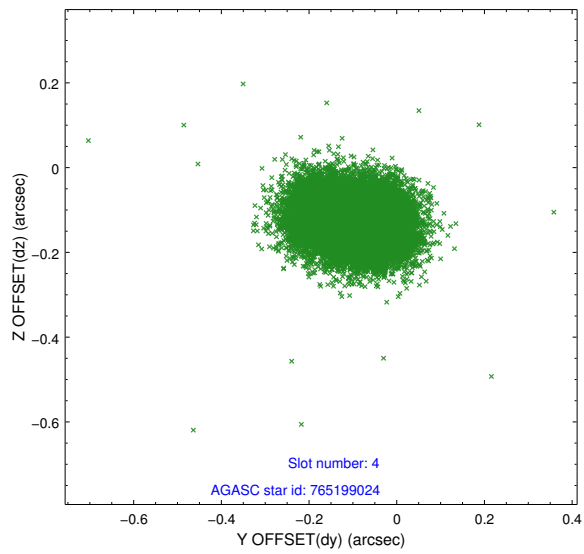
slot	status	id	mag	n_pts	med_dy	med_dz	dr1	dr2	ra	dec	mean_y	mean_z
0	FID	ACIS-I-1	7.24	9308	0.066	-0.024	0.017	0.027	0.000000	0.000000	934.01	-918.38
1	FID	ACIS-I-5	7.22	9307	-0.225	0.068	0.013	0.019	0.000000	0.000000	-1814.35	979.20
2	FID	ACIS-I-6	7.25	9306	0.067	0.027	0.017	0.025	0.000000	0.000000	399.56	1623.67
3	GUIDE	690356400	9.25	18541	-0.146	0.230	0.080	0.130	3.405177	-14.944552	866.30	-2071.59
4	GUIDE	765199024	9.27	18592	-0.091	-0.126	0.088	0.142	2.209547	-15.114434	1819.23	2020.13
5	GUIDE	765332824	8.73	18597	-0.014	0.143	0.058	0.097	3.058070	-15.164622	574.02	-657.96
6	GUIDE	765334176	8.96	18600	0.234	-0.161	0.074	0.118	3.031719	-15.842479	-1662.27	322.63
7	GUIDE	765203584	9.51	18605	0.019	-0.078	0.128	0.208	2.532852	-15.177110	1200.19	1056.33

2.4 Star Slots

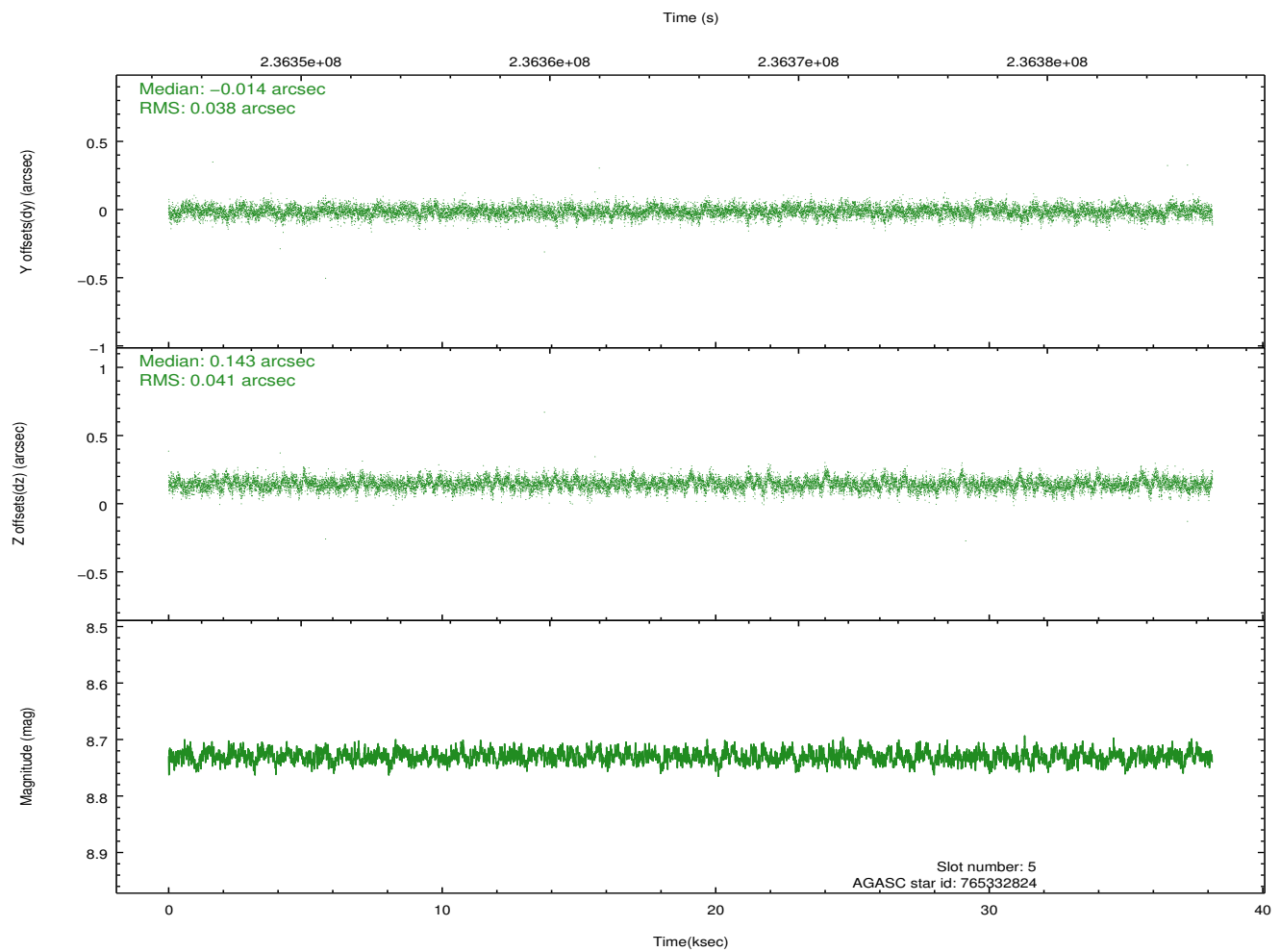
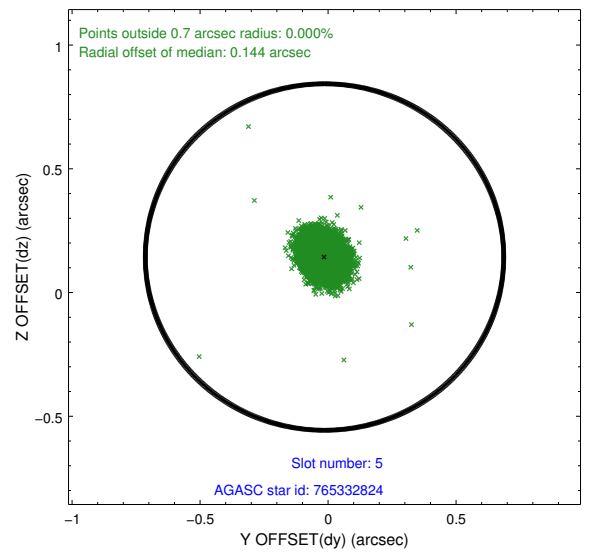
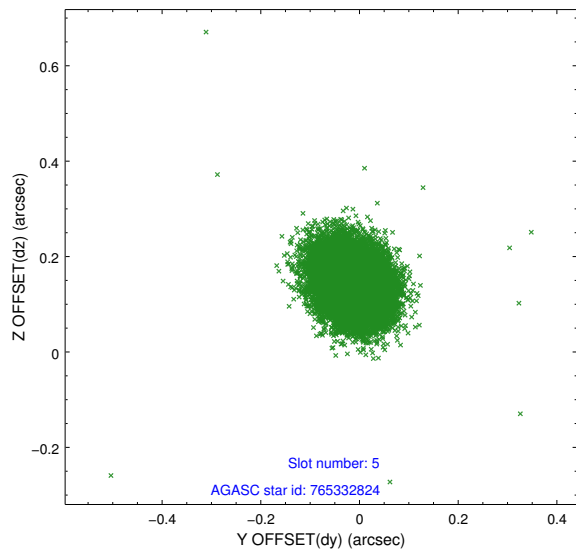
2.4.1 Slot 3



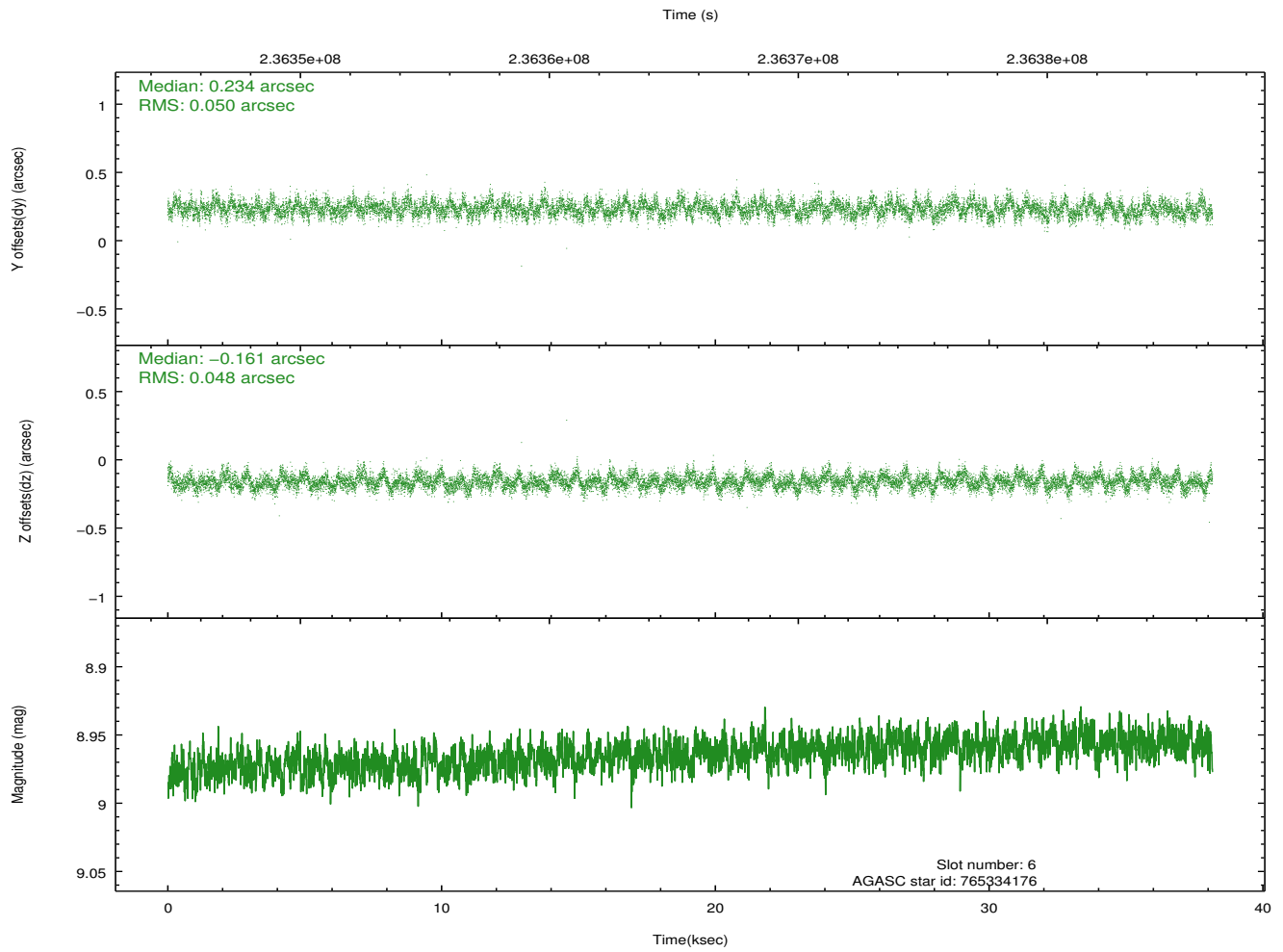
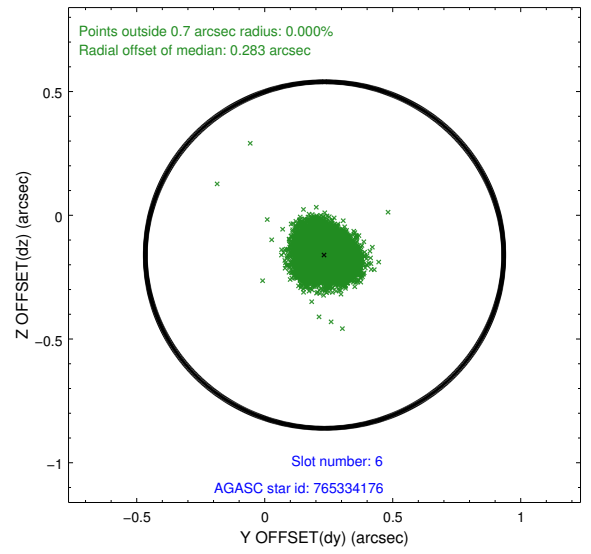
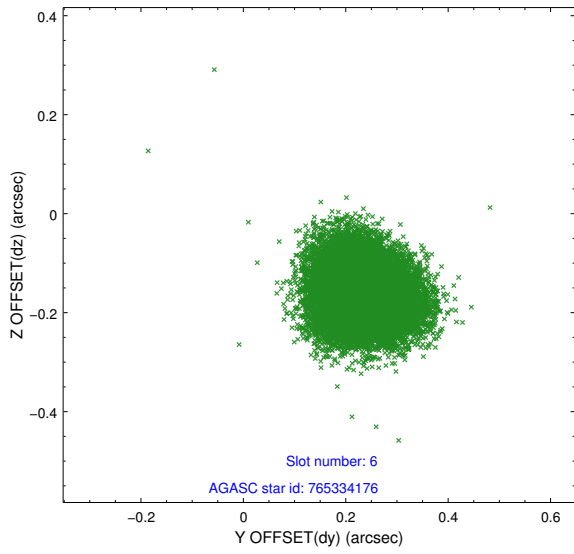
2.4.2 Slot 4



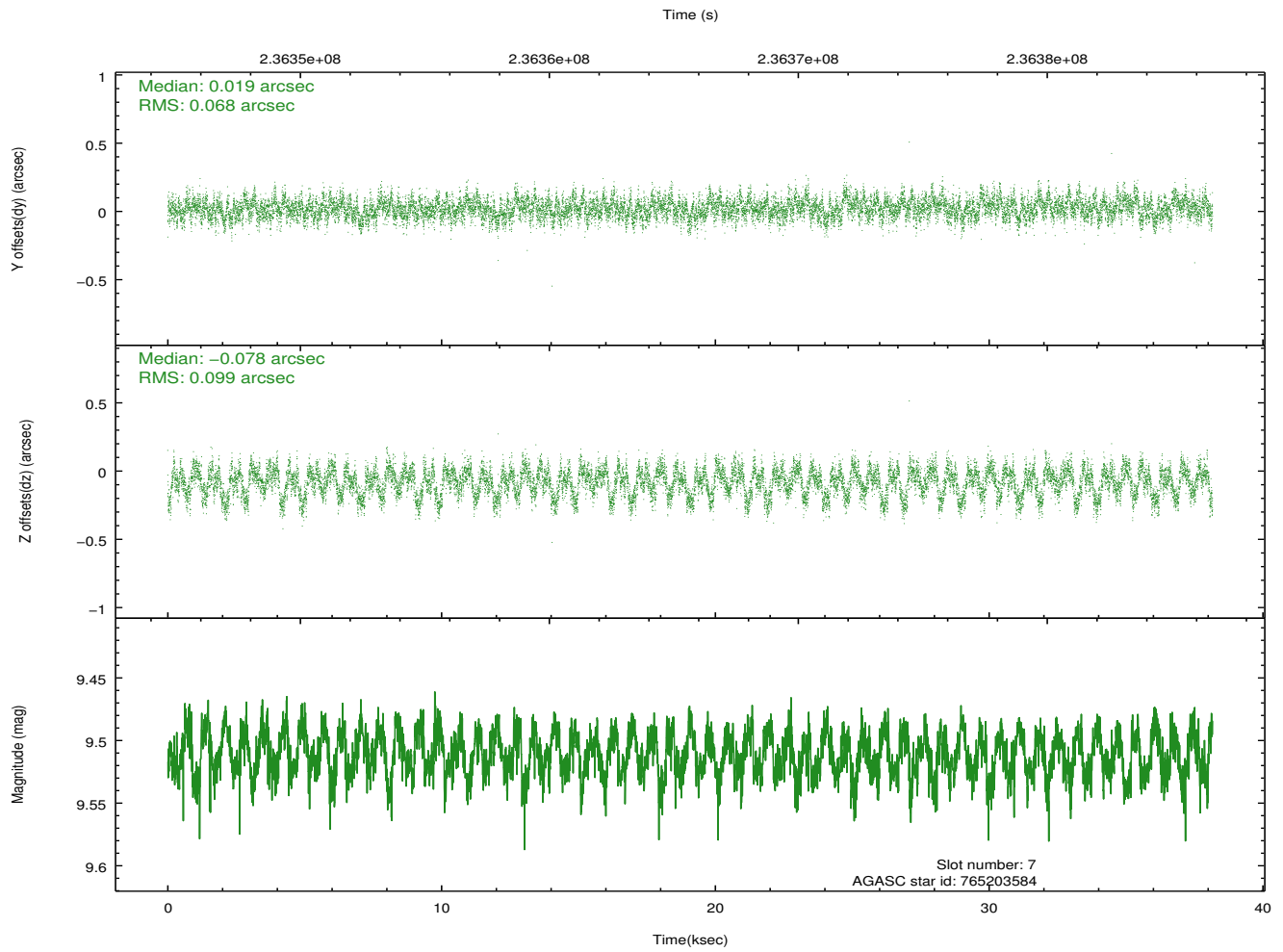
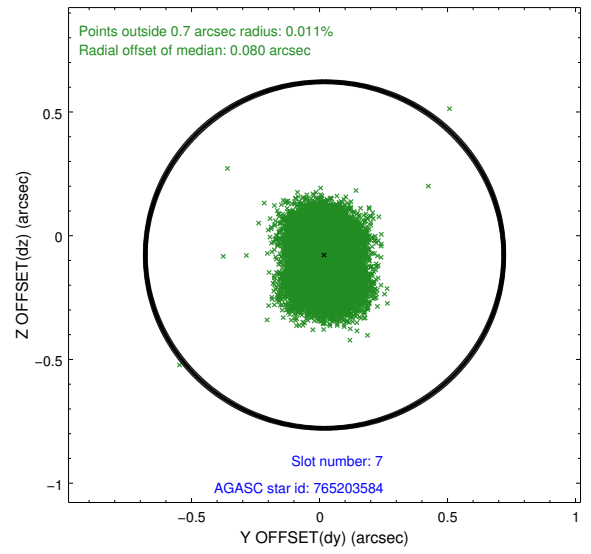
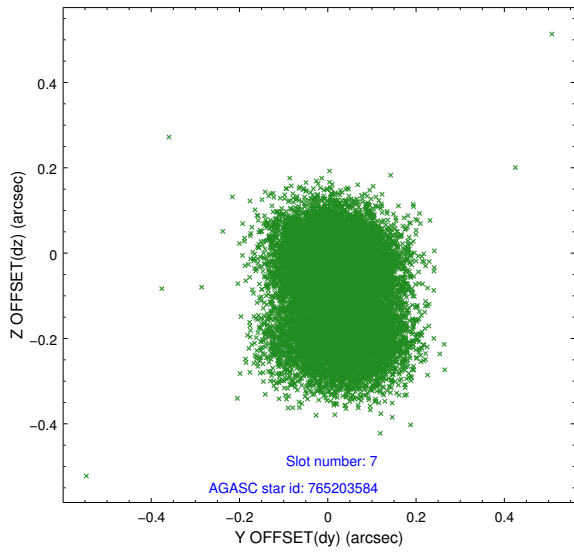
2.4.3 Slot 5



2.4.4 Slot 6

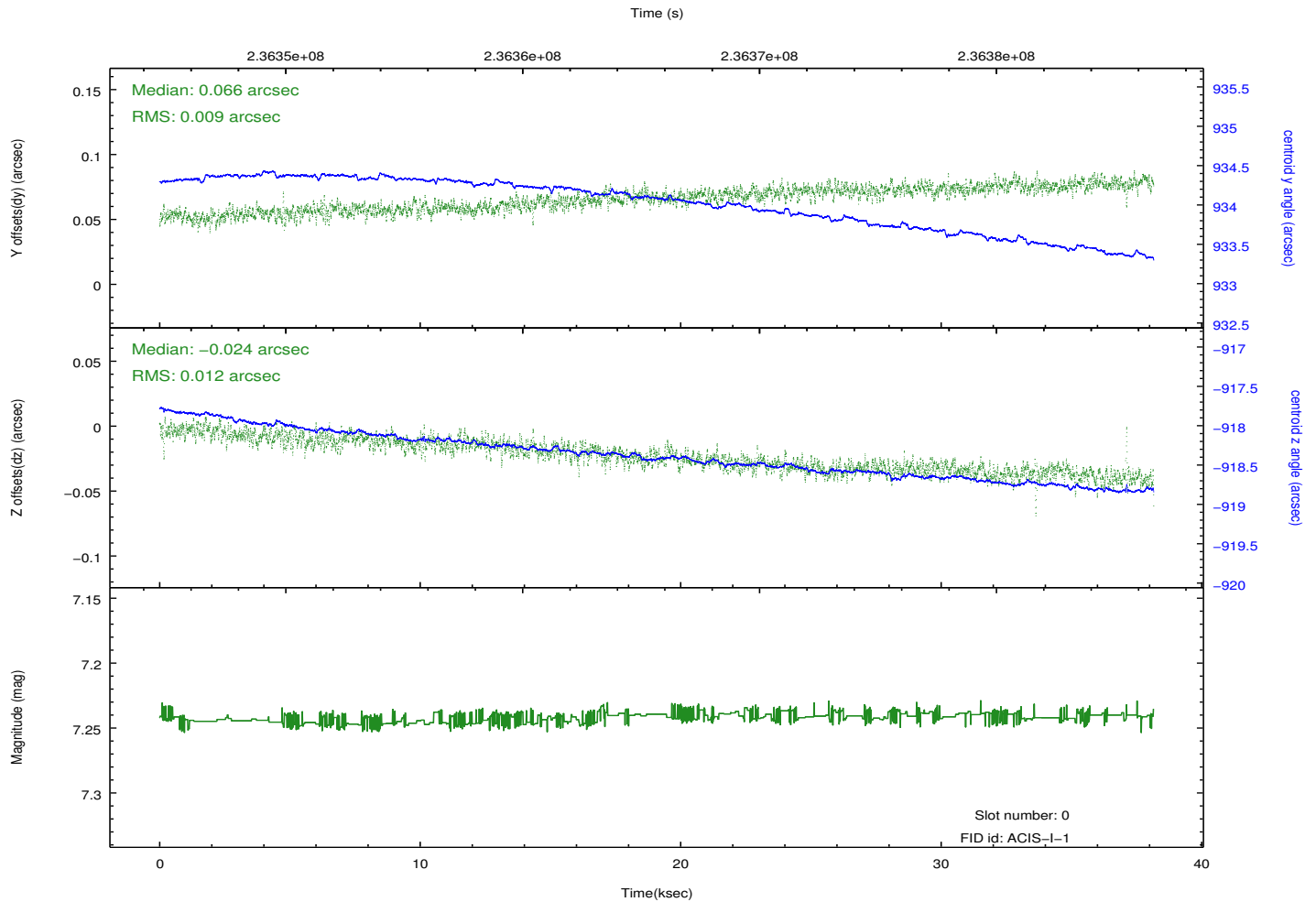
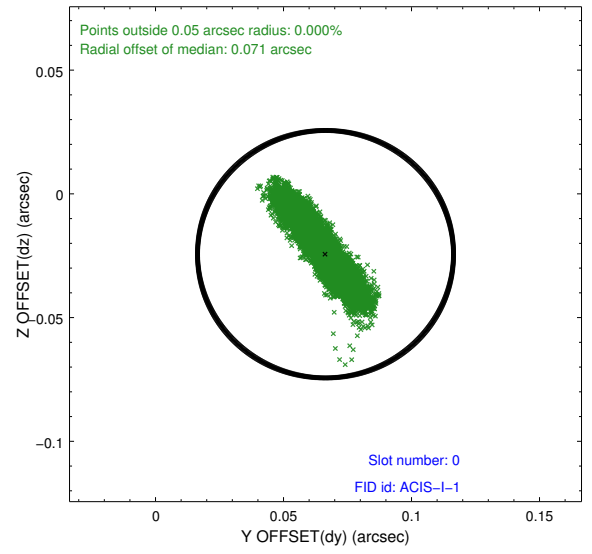
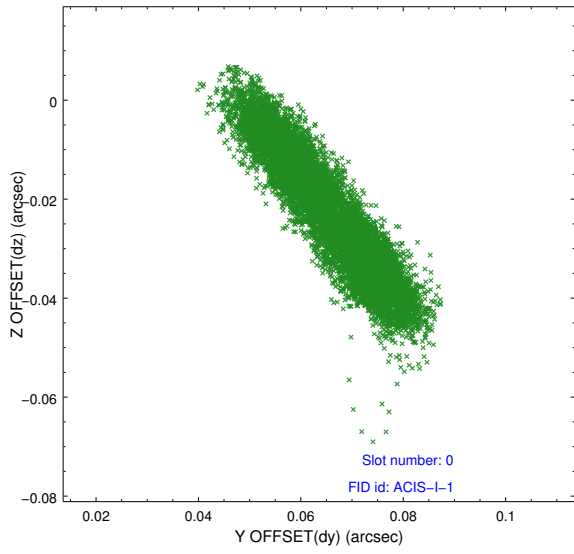


2.4.5 Slot 7

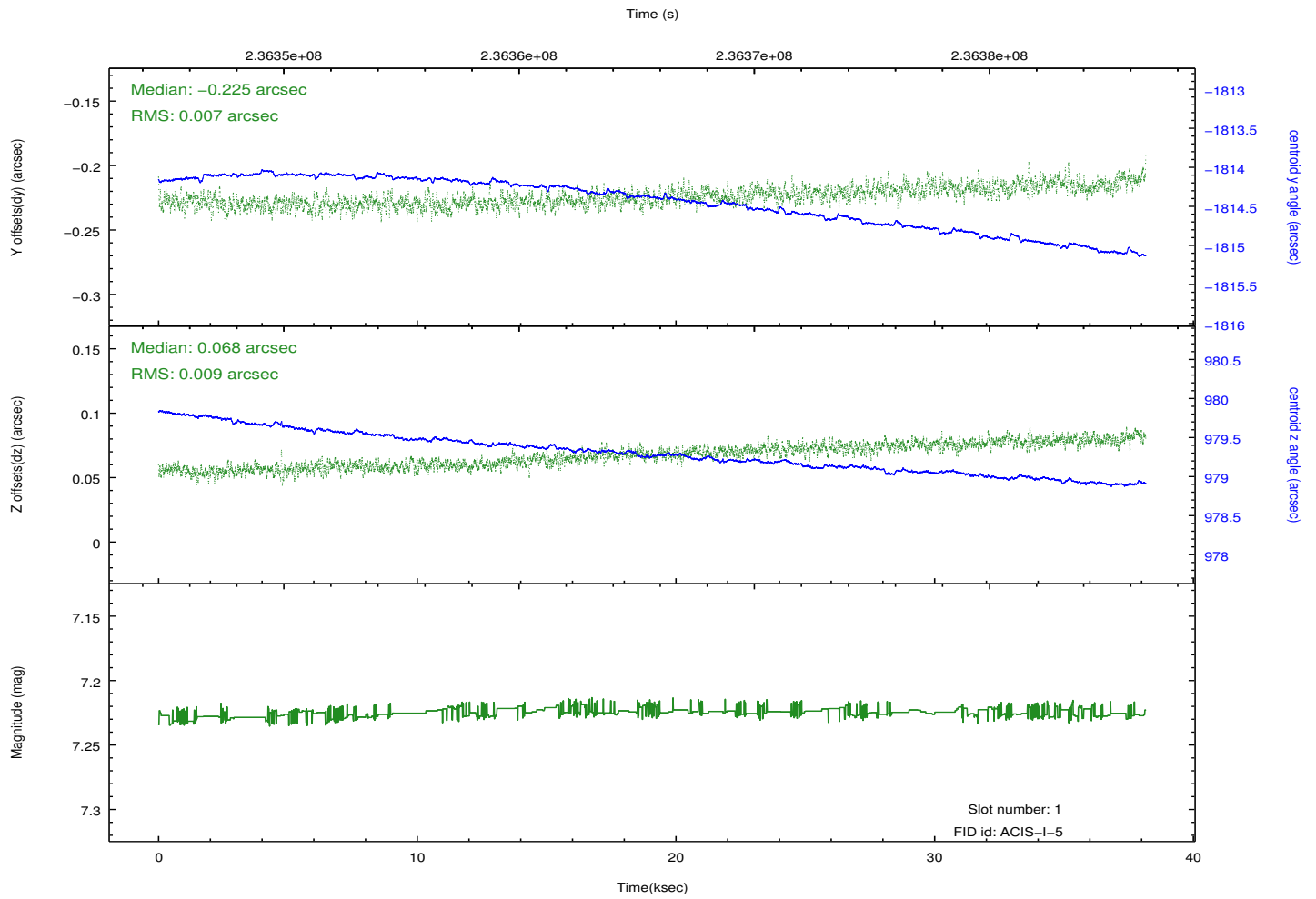
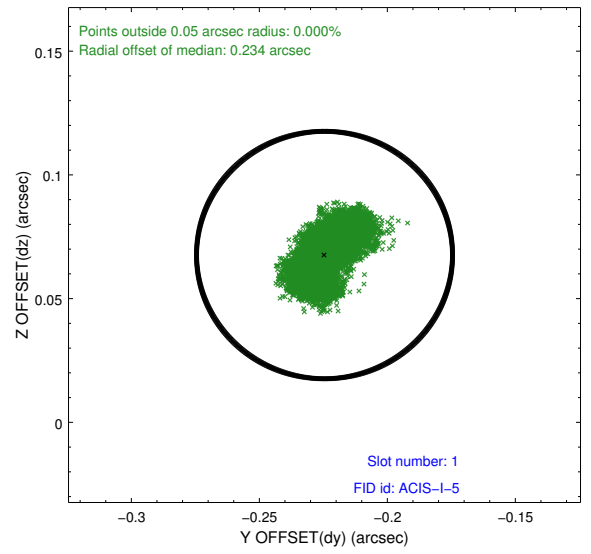
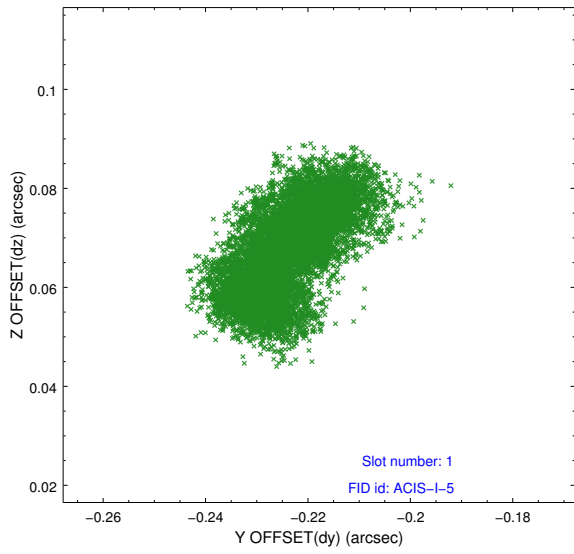


2.5 FID Slots

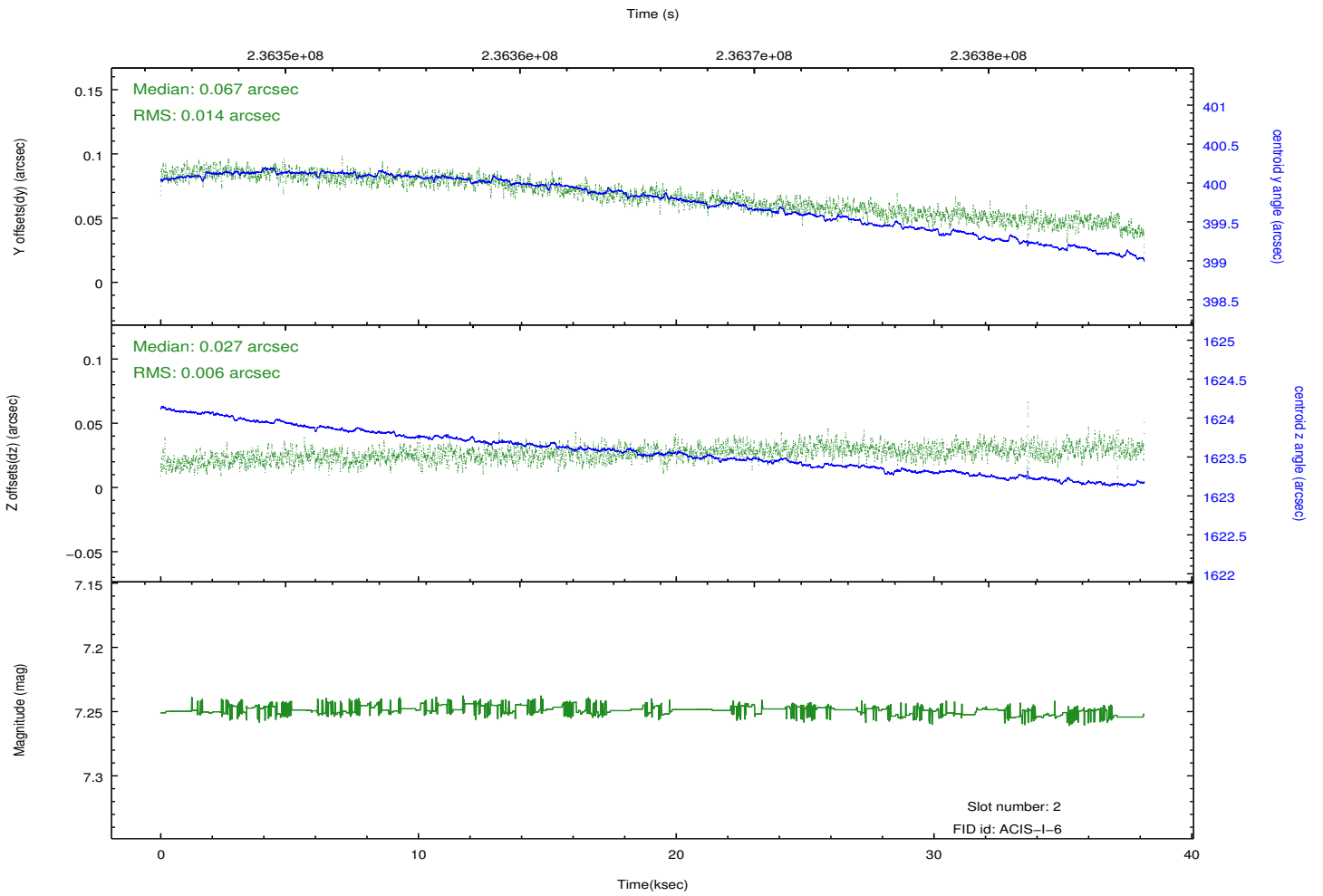
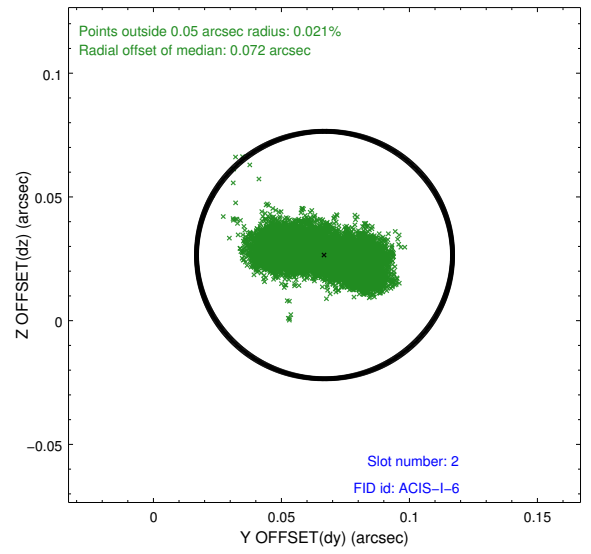
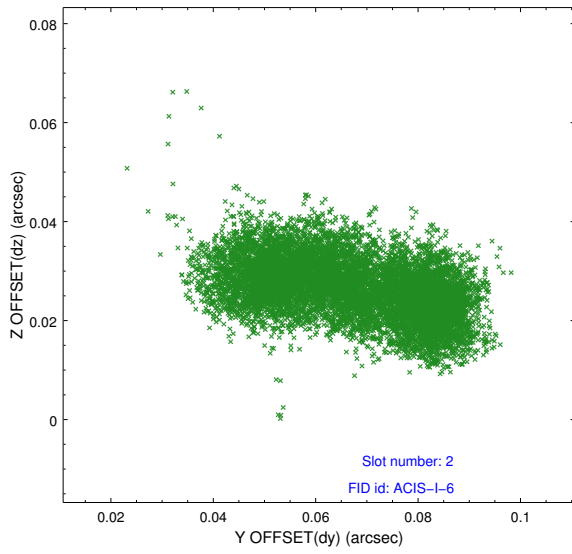
2.5.1 Slot 0



2.5.2 Slot 1



2.5.3 Slot 2



A Summary

A.1 Status

V&V Scientist	Jen Lauer
V&V Date (YYYY-MM-DD)	2013.01.17
V&V Edition	1
V&V Disposition and Status	OK
V&V Charge Time	37.77035

A.2 Comments