

V&V Reference Report

L2 ASCDS Version : 8.4.5

Observation 615 - L2 Version 4
Chandra X-Ray Center

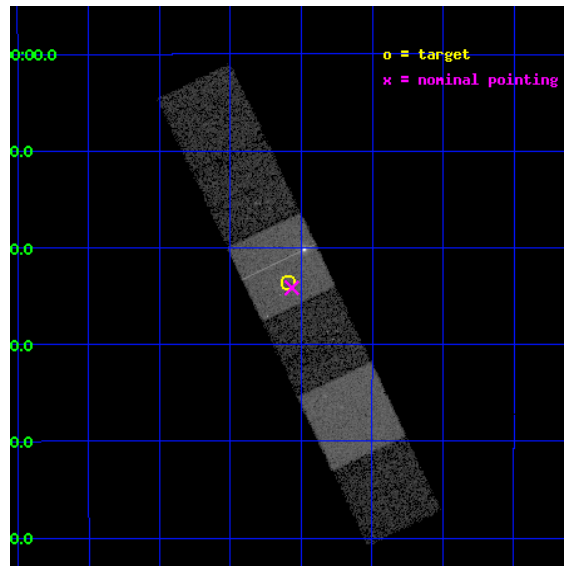
L2 Processing Date : Aug 30 2012

Contents

1	Front	2
2	OBI	3
2.1	OBI	3
2.1.1	Images	3
2.1.2	Bias	3
2.1.3	Parameters	4
2.1.4	Events	4
2.2	Compared Parameters	5
2.3	Aspect	6
2.4	Star Slots	9
2.4.1	Slot 3	9
2.4.2	Slot 4	10
2.4.3	Slot 5	11
2.4.4	Slot 6	12
2.4.5	Slot 7	13
2.5	FID Slots	14
2.5.1	Slot 0	14
2.5.2	Slot 1	15
2.5.3	Slot 2	16
A	Summary	17
A.1	Status	17
A.2	Comments	17

1 Front

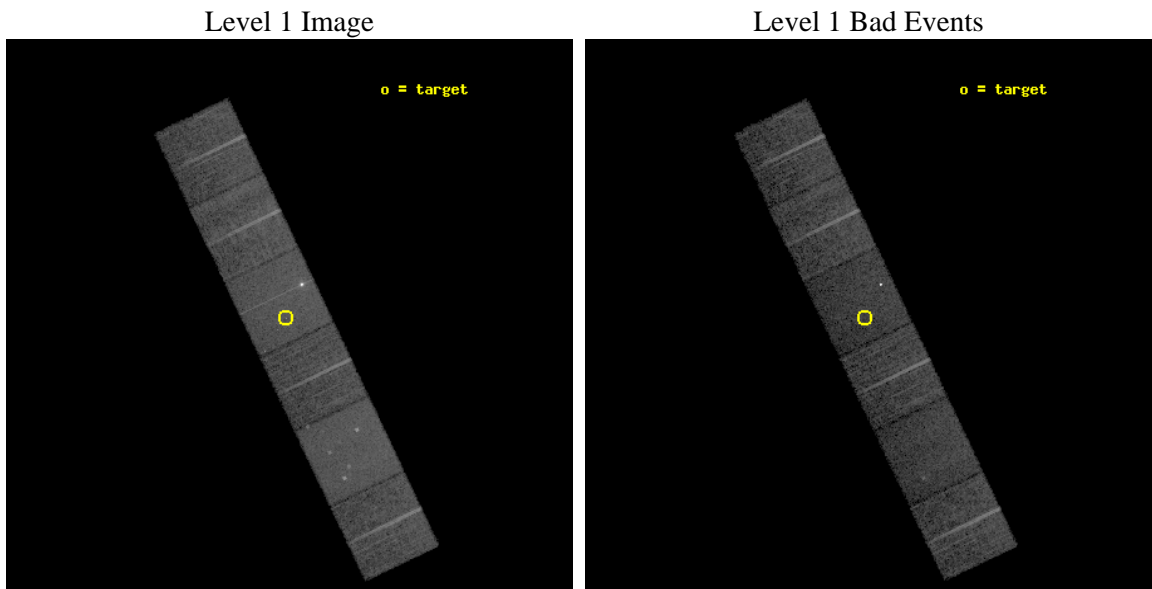
seq_num	200040	Sequence number
obs_id	615	Observation id
title	X-RAY EMISSION AT THE BOTTOM OF THE MAIN SEQUENCE	Proposal title
observer	DR. THOMAS FLEMING	Principal investigator
object	VB 8	Source name
dtcycle	0	
cycle	P	events from which exps? Prim/Second/Both
ra_targ	253.8975	Observer's specified target RA [deg]
dec_targ	-8.394417	Observer's specified target Dec [deg]
ra_nom	253.8916029627	Nominal RA [deg]
dec_nom	-8.402461294282	Nominal Dec [deg]
roll_nom	244.47037416982	Nominal Roll [deg]
revision	4	Processing version of data
ontime	9152.0000085086	Sum of GTIs [s]
livetime	9036.111873728	Livetime [s]
ontime4	9152.0000085086	Sum of GTIs [s]
ontime5	9152.0000085086	Sum of GTIs [s]
ontime6	9152.0000085086	Sum of GTIs [s]
ontime7	9152.0000085086	Sum of GTIs [s]
ontime8	9152.0000085086	Sum of GTIs [s]
ontime9	9152.0000085086	Sum of GTIs [s]
l2events	104189	Number of level 2 events



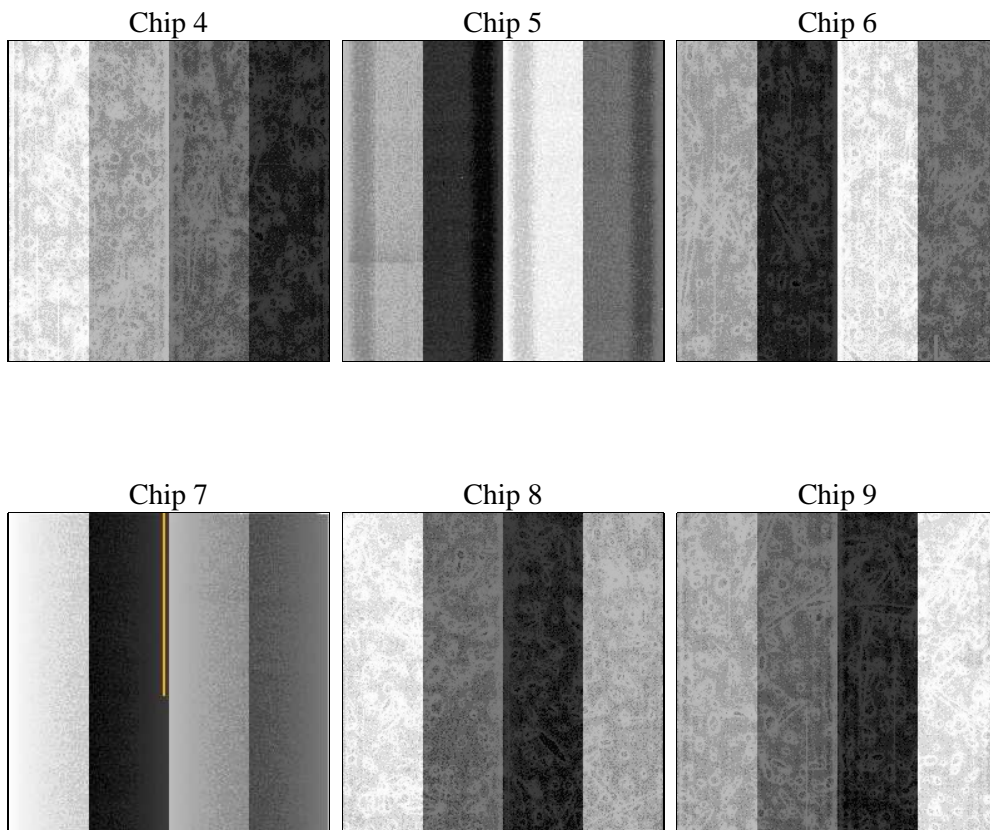
2 OBI

2.1 OBI

2.1.1 Images



2.1.2 Bias



2.1.3 Parameters

obi_num	0	Obi number	sched_exp_time	9000.000000	[s] Scheduled observation exposure time
ascdsver	8.4.5	Processing system revision	ontime	9152.0000085086	Sum of GTIs [s]
caldbver	4.5.1.1	 	ontime4	9152.0000085086	Sum of GTIs [s]
date	2012-08-30T04:11:54	Date and time of file creation	ontime5	9152.0000085086	Sum of GTIs [s]
revision	4	Processing version of data	ontime6	9152.0000085086	Sum of GTIs [s]
			ontime7	9152.0000085086	Sum of GTIs [s]
			ontime8	9152.0000085086	Sum of GTIs [s]
			ontime9	9152.0000085086	Sum of GTIs [s]
			l1events	444273	Number of level 1 events

2.1.4 Events

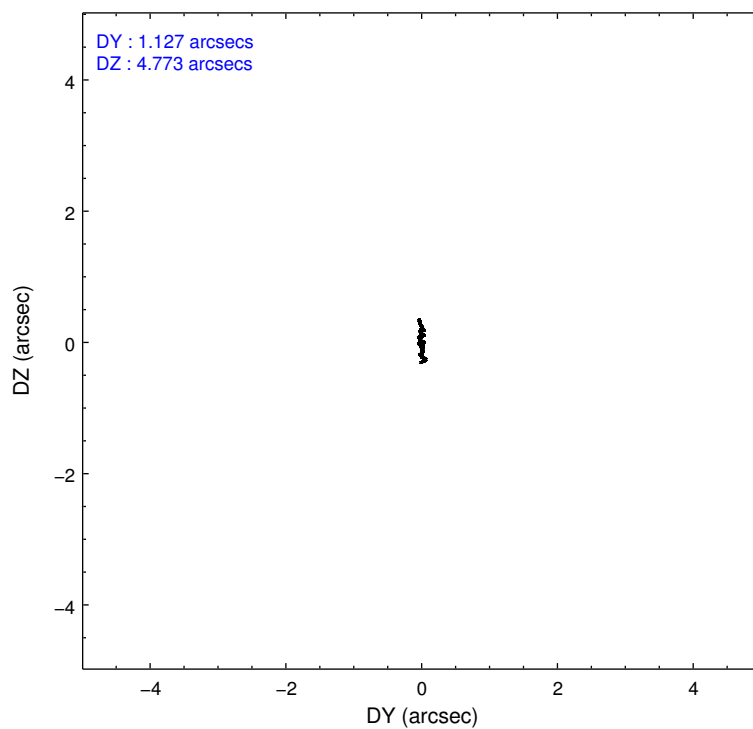
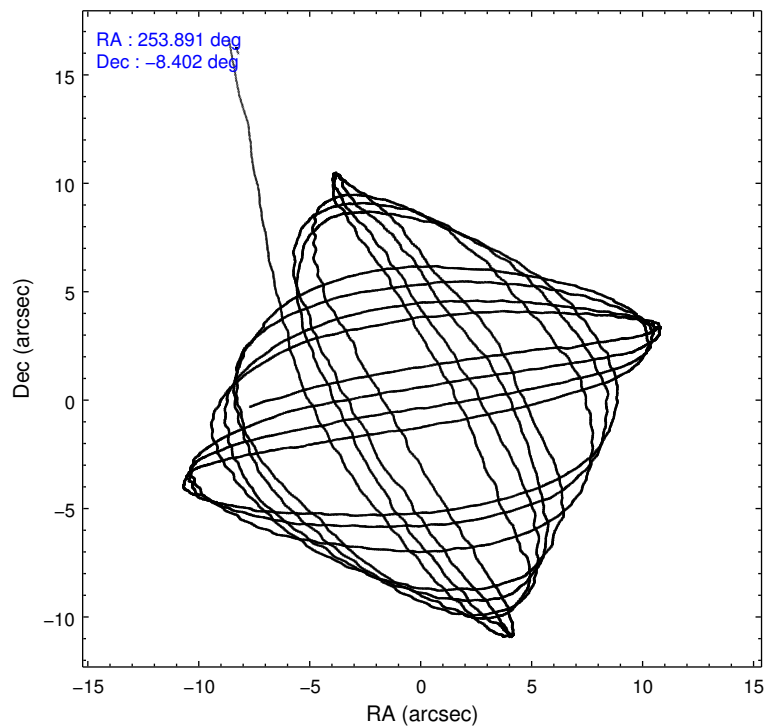
	ccd 4	ccd 5	ccd 6	ccd 7	ccd 8	ccd 9
level 1 events	65626	83459	61212	97939	75436	60601
rejected events	58156	44938	53768	54145	60305	53105
rejected %	88%	53%	87%	55%	79%	87%

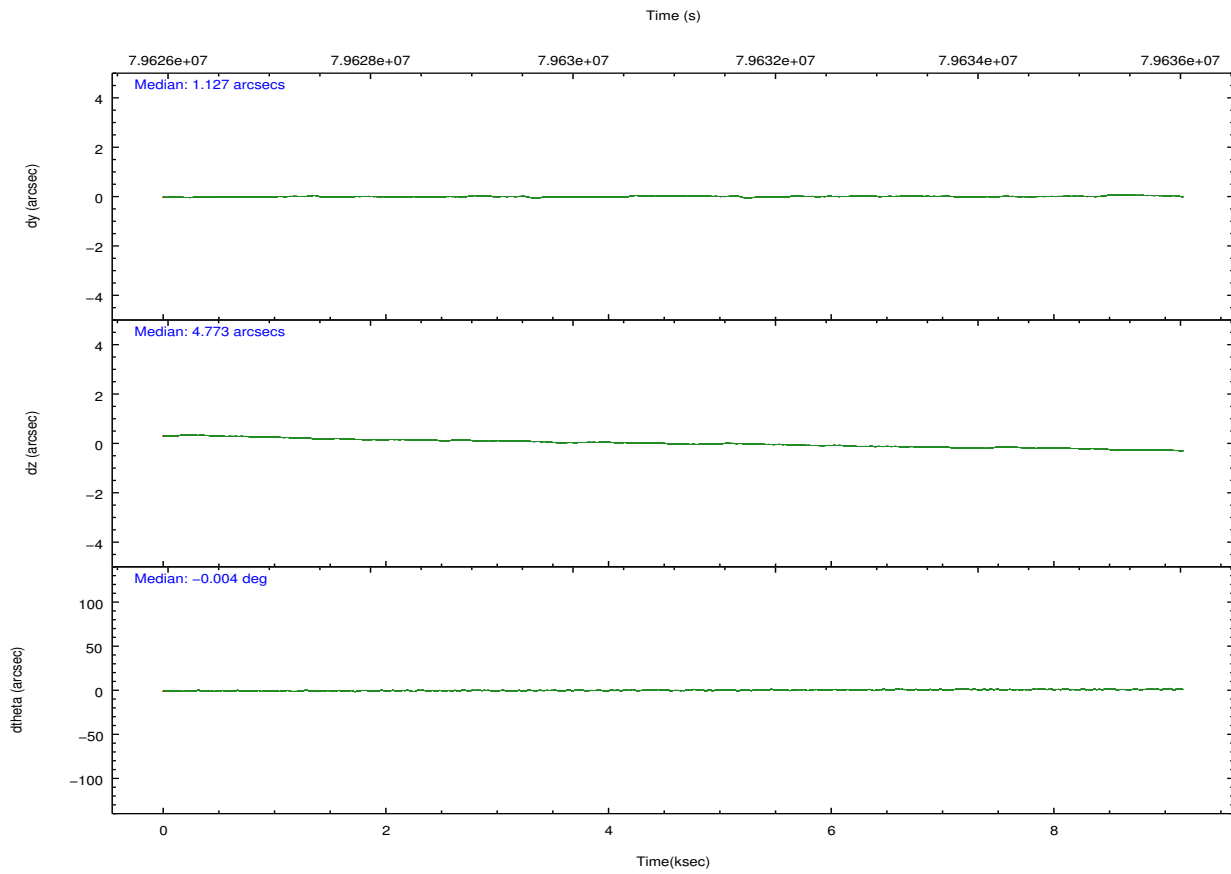
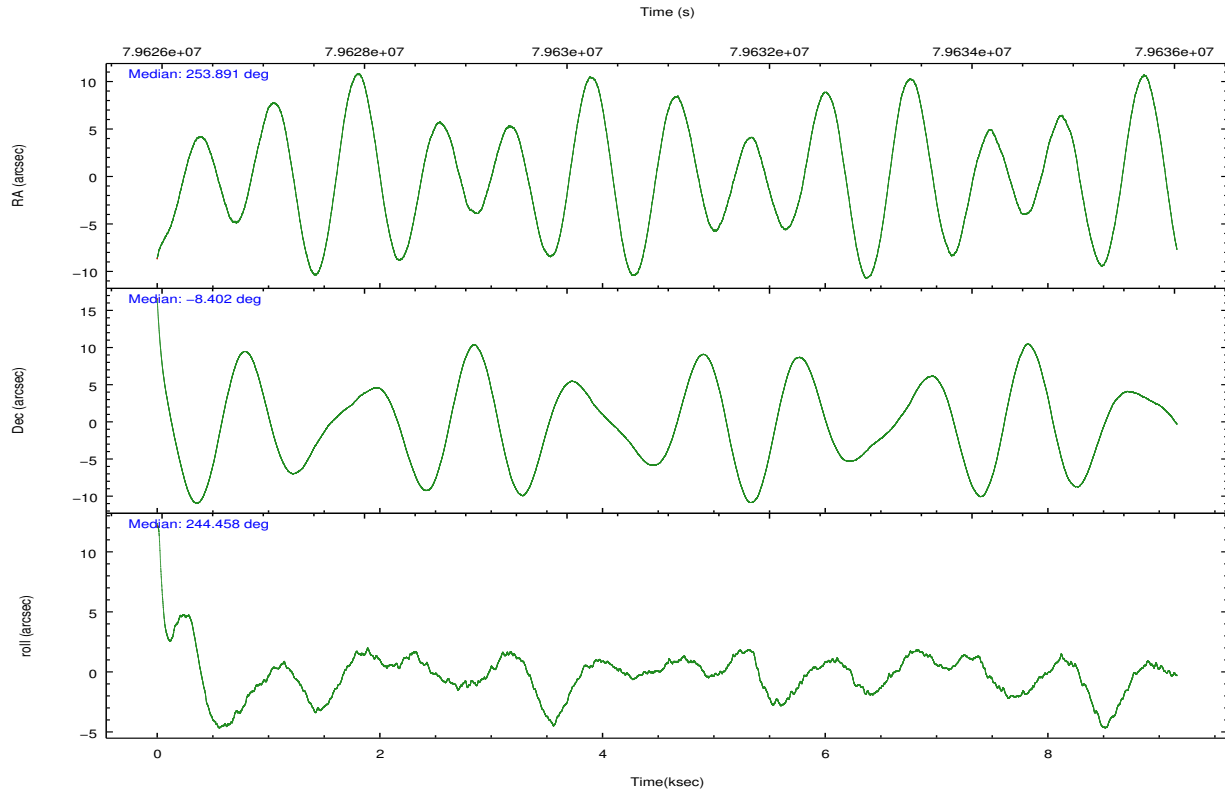
	ccd 4	ccd 5	ccd 6	ccd 7	ccd 8	ccd 9
grade 0 events	3474	5380	3573	7466	5470	3374
	5%	6%	5%	7%	7%	5%
grade 1 events	35	112	22	745	43	29
	0%	0%	0%	0%	0%	0%
grade 2 events	1814	11835	1579	9506	3240	1636
	2%	14%	2%	9%	4%	2%
grade 3 events	671	1956	694	4319	1786	700
	1%	2%	1%	4%	2%	1%
grade 4 events	631	1805	684	4208	1650	679
	0%	2%	1%	4%	2%	1%
grade 5 events	1944	6042	2286	8440	2878	2367
	2%	7%	3%	8%	3%	3%
grade 6 events	1224	19445	1361	20049	3481	1391
	1%	23%	2%	20%	4%	2%
grade 7 events	55833	36884	51013	43206	56888	50425
	85%	44%	83%	44%	75%	83%

2.2 Compared Parameters

Parameter	Planned	Actual	Parameter	Planned	Actual
Instrument	ACIS	ACIS	Obspar format version number	7	7
Detector	ACIS-456789	ACIS-456789	Obspar file type	PREDICTED	ACTUAL
Grating	NONE	NONE	Obspar update status	NONE	UPDATED
Data mode	FAINT	FAINT	Number of optional ACIS chips dropped	0	0
Observation mode	POINTING	POINTING	On-chip summing requested	N	N
[deg] Pointing RA	253.889286	253.8916029627023	Subarray requested	NONE	NONE
[deg] Pointing Dec	-8.375166	-8.402461294281981	Alternating exposures requested	N	N
[deg] Pointing Roll	244.313392	244.4703741698249	[s] Primary exposure time	0.000000	3.2
[mm] SIM focus pos	-0.684267	-0.6828225247311905			
[mm] SIM defocus	0	0.001444936568705701			
[mm] SIM translation stage pos	-190.132523	-190.1400660498719			
[mm] SIM translation stage offset	0	0.00754346686406393			
[s] Observation start time (MET)	79626567.184000	79625358.557781			
Observation start date	2000-07-10T14:28:23	2000-07-10T14:09:18			
[s] Observation end time (MET)	79635567.184000	79636308.120684			
Observation end date	2000-07-10T16:58:23	2000-07-10T17:11:48			
Read mode	TIMED	TIMED			

2.3 Aspect



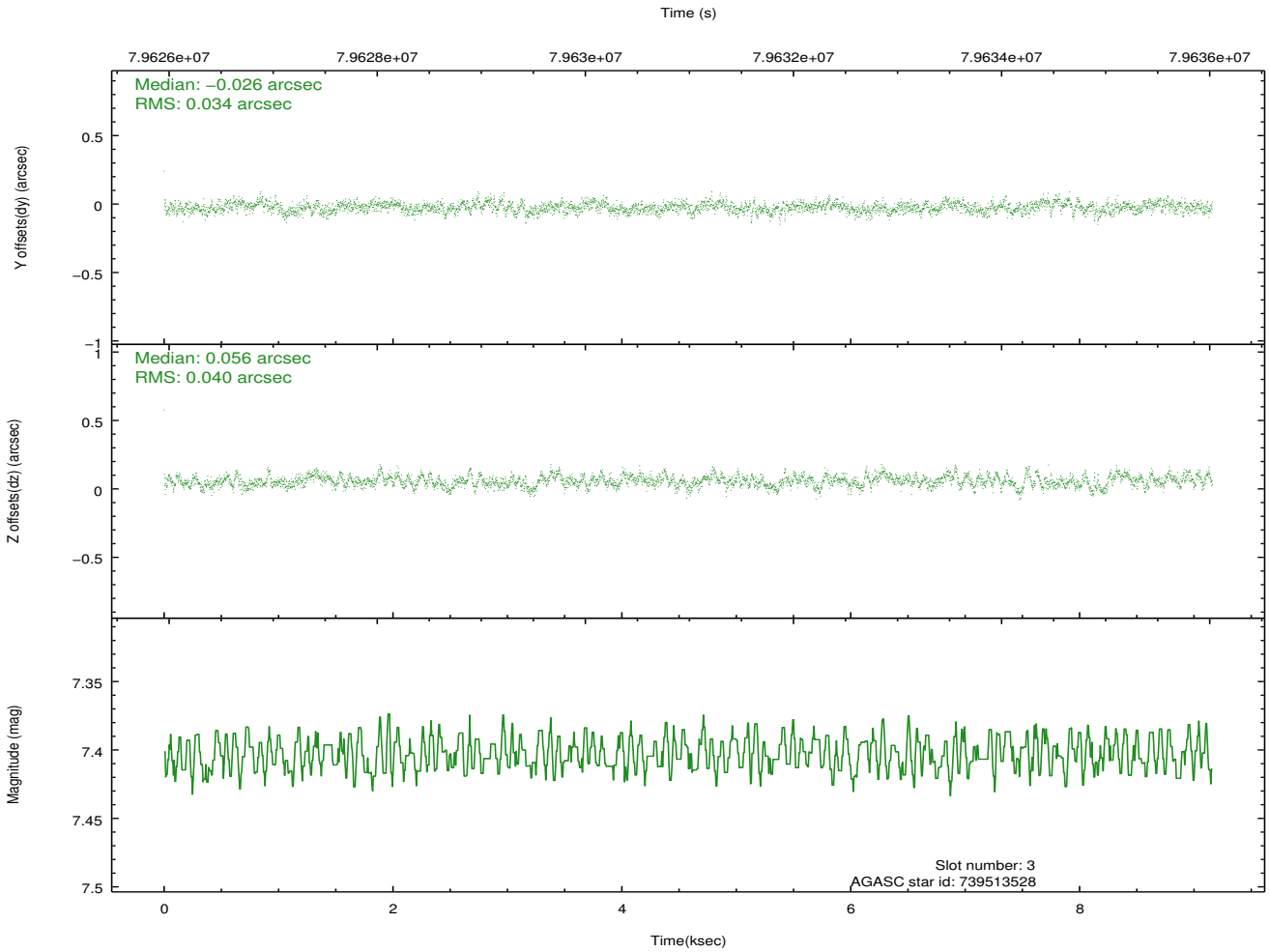
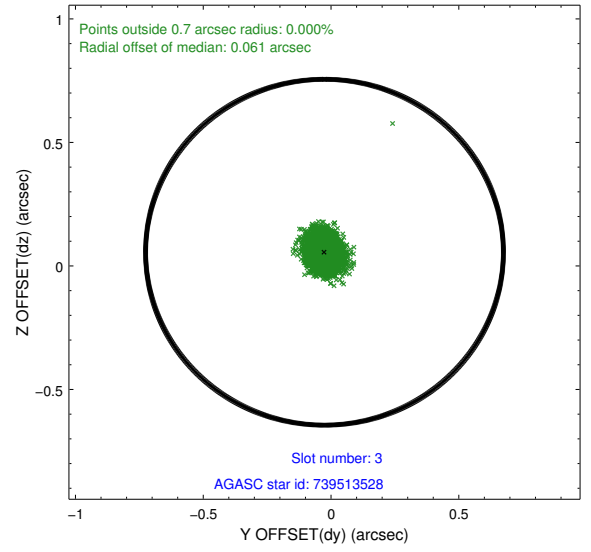
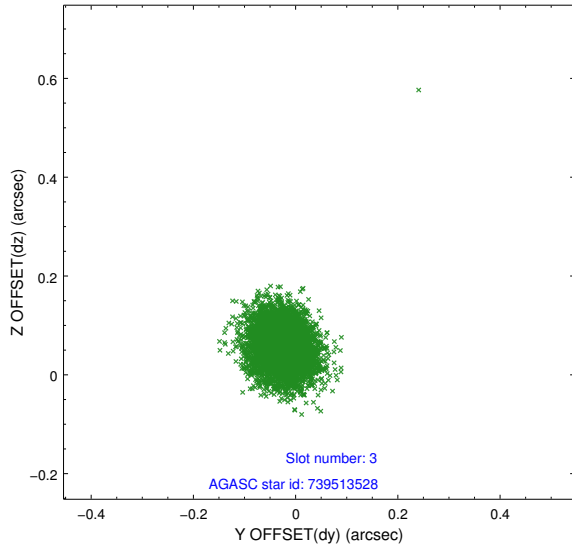


Slot Statistics

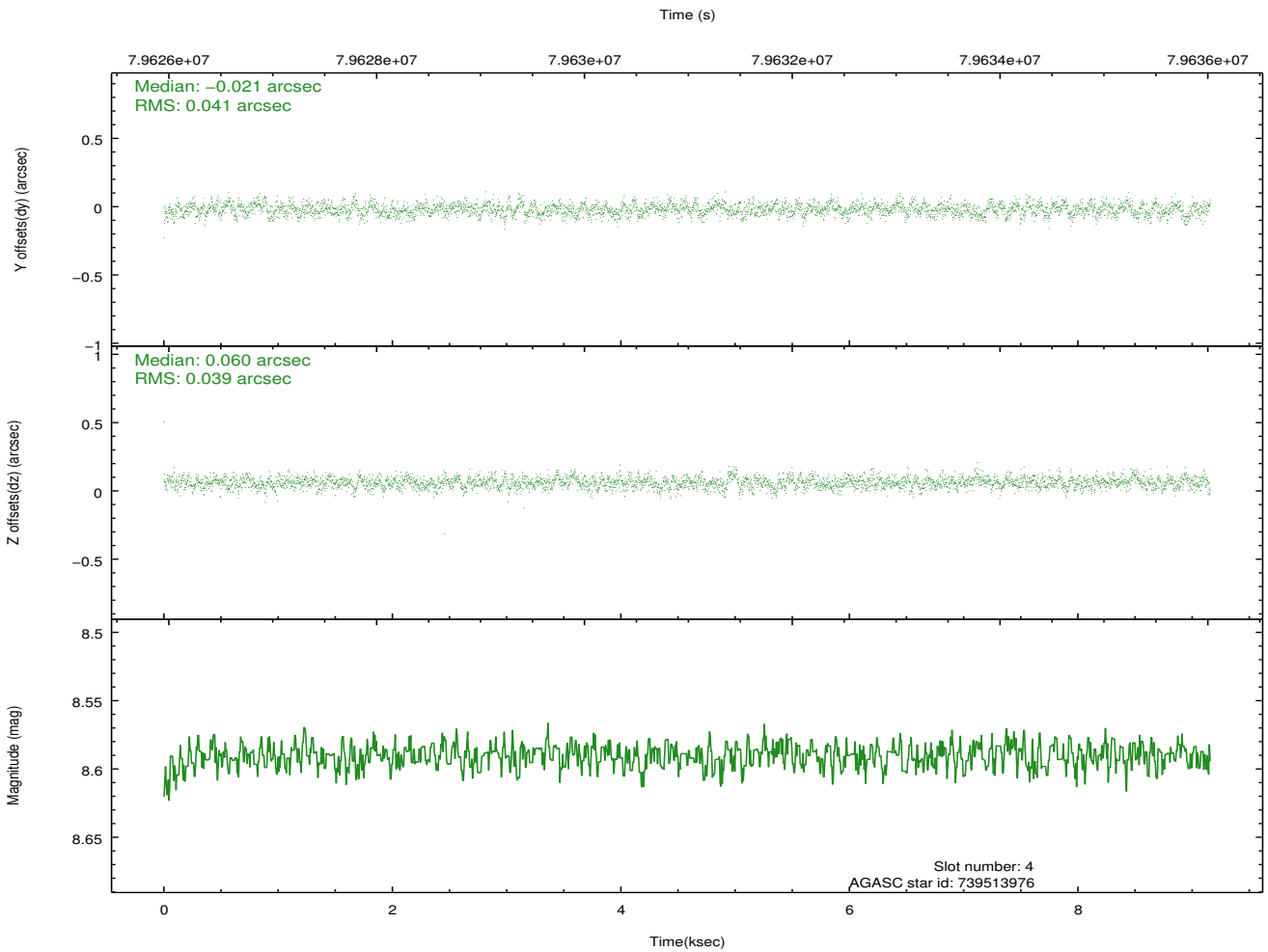
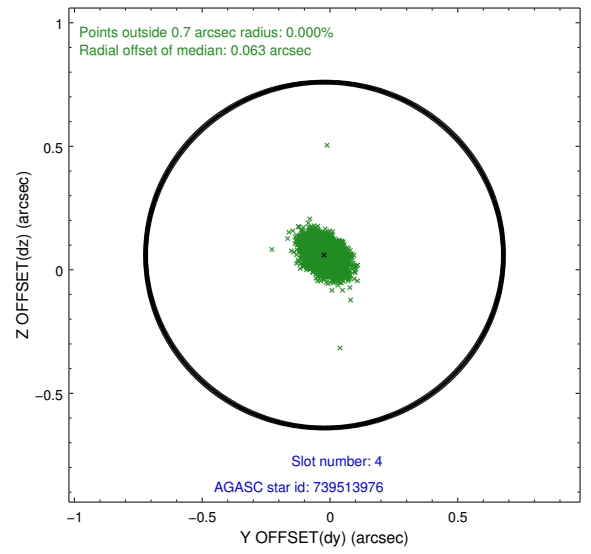
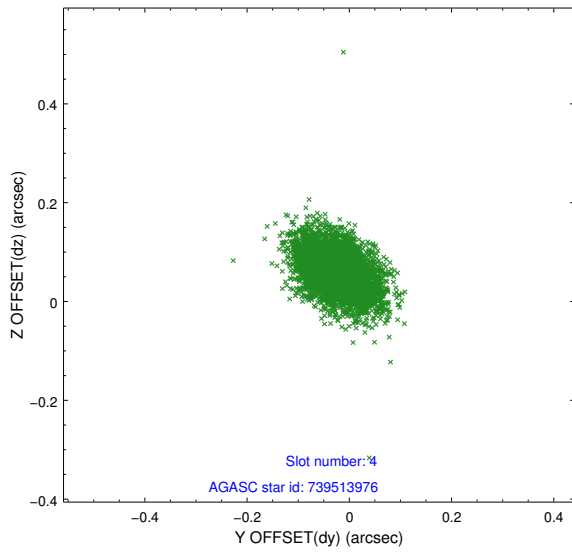
slot	status	id	mag	n_pts	med_dy	med_dz	dr1	dr2	ra	dec	mean_y	mean_z
0	FID	ACIS-S-2	7.11	2235	-0.028	0.001	0.008	0.013	0.000000	0.000000	-753.74	-1725.88
1	FID	ACIS-S-4	7.21	2235	-0.013	0.013	0.005	0.010	0.000000	0.000000	2159.28	182.01
2	FID	ACIS-S-5	7.24	2235	0.009	-0.005	0.008	0.012	0.000000	0.000000	-1805.78	176.33
3	GUIDE	739513528	7.40	4469	-0.026	0.056	0.056	0.089	253.794889	-8.368581	124.75	-312.66
4	GUIDE	739513976	8.59	4467	-0.021	0.060	0.059	0.099	254.317335	-8.384528	-629.67	1389.19
5	GUIDE	739512192	9.23	4468	-0.032	-0.048	0.077	0.130	253.280429	-8.391770	995.86	-1926.54
6	GUIDE	739519240	9.04	4467	0.094	-0.094	0.081	0.134	253.539385	-8.286636	254.47	-1261.18
7	GUIDE	739513864	9.89	4397	-0.016	0.026	0.096	0.158	254.068829	-8.543703	270.15	839.42

2.4 Star Slots

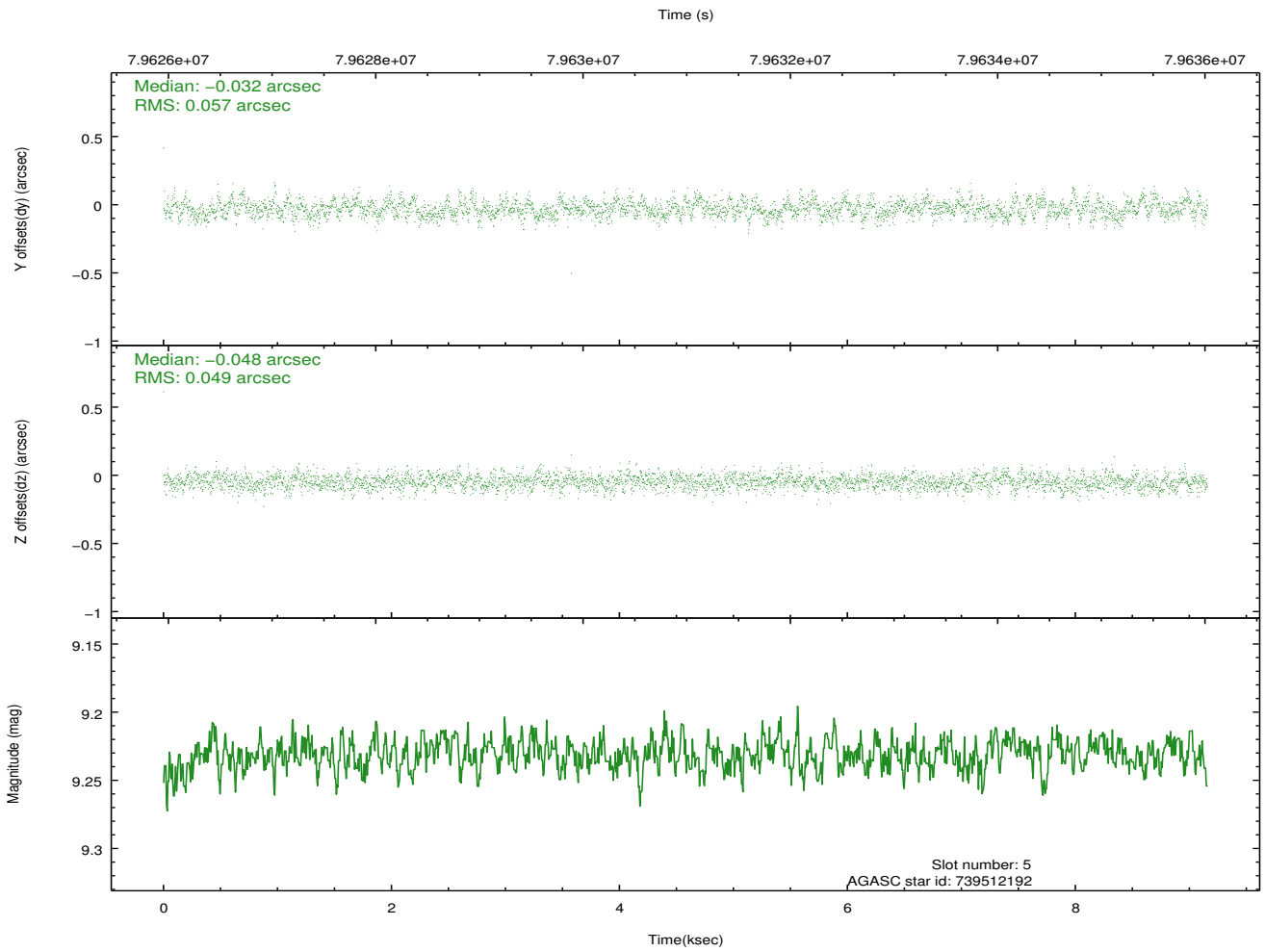
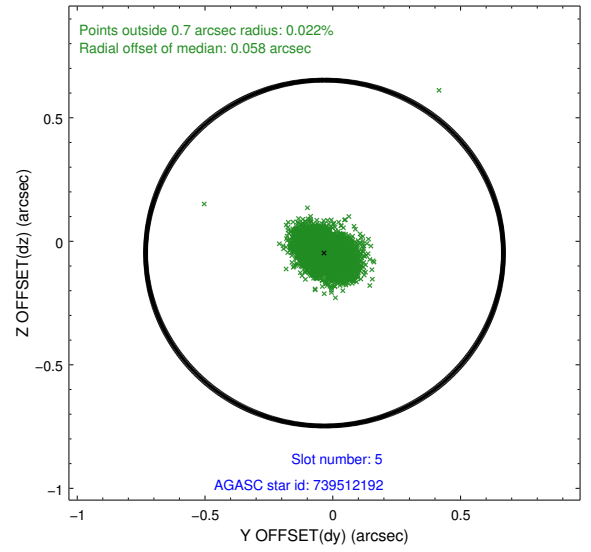
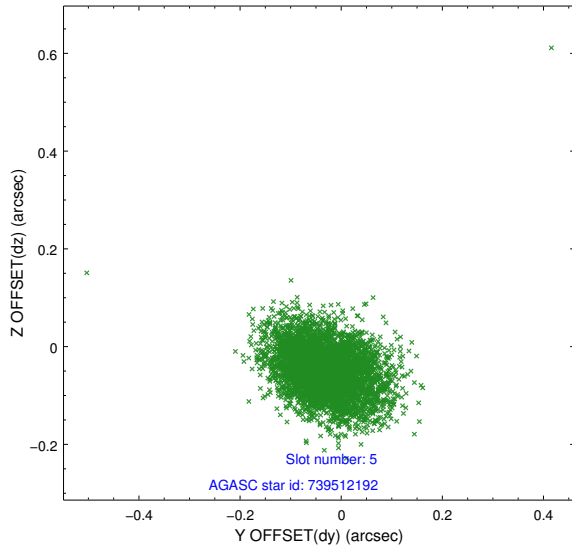
2.4.1 Slot 3



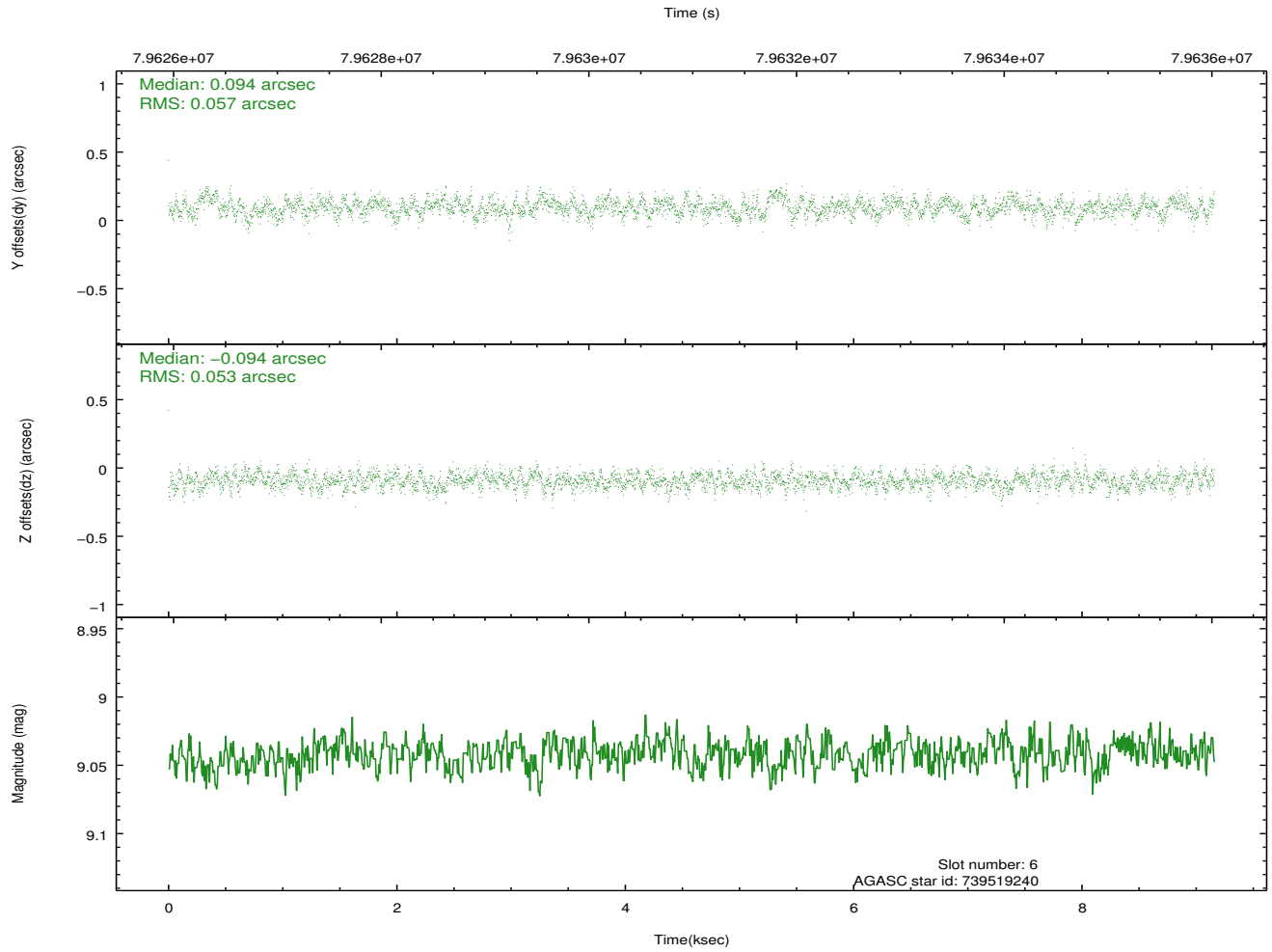
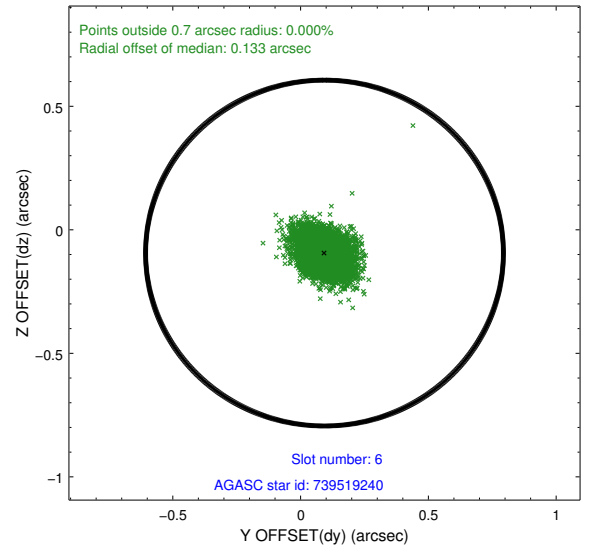
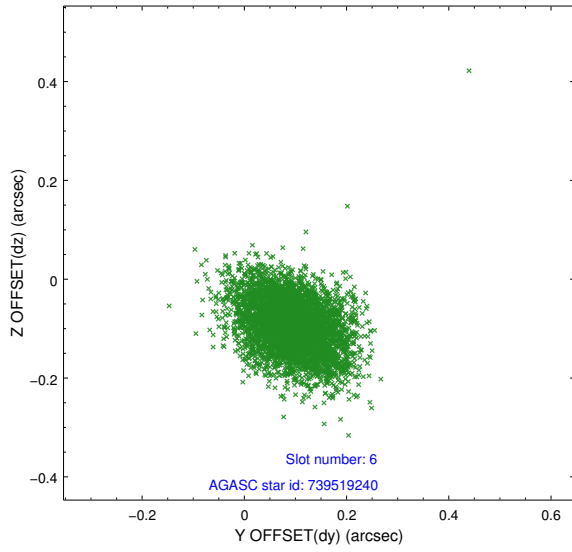
2.4.2 Slot 4



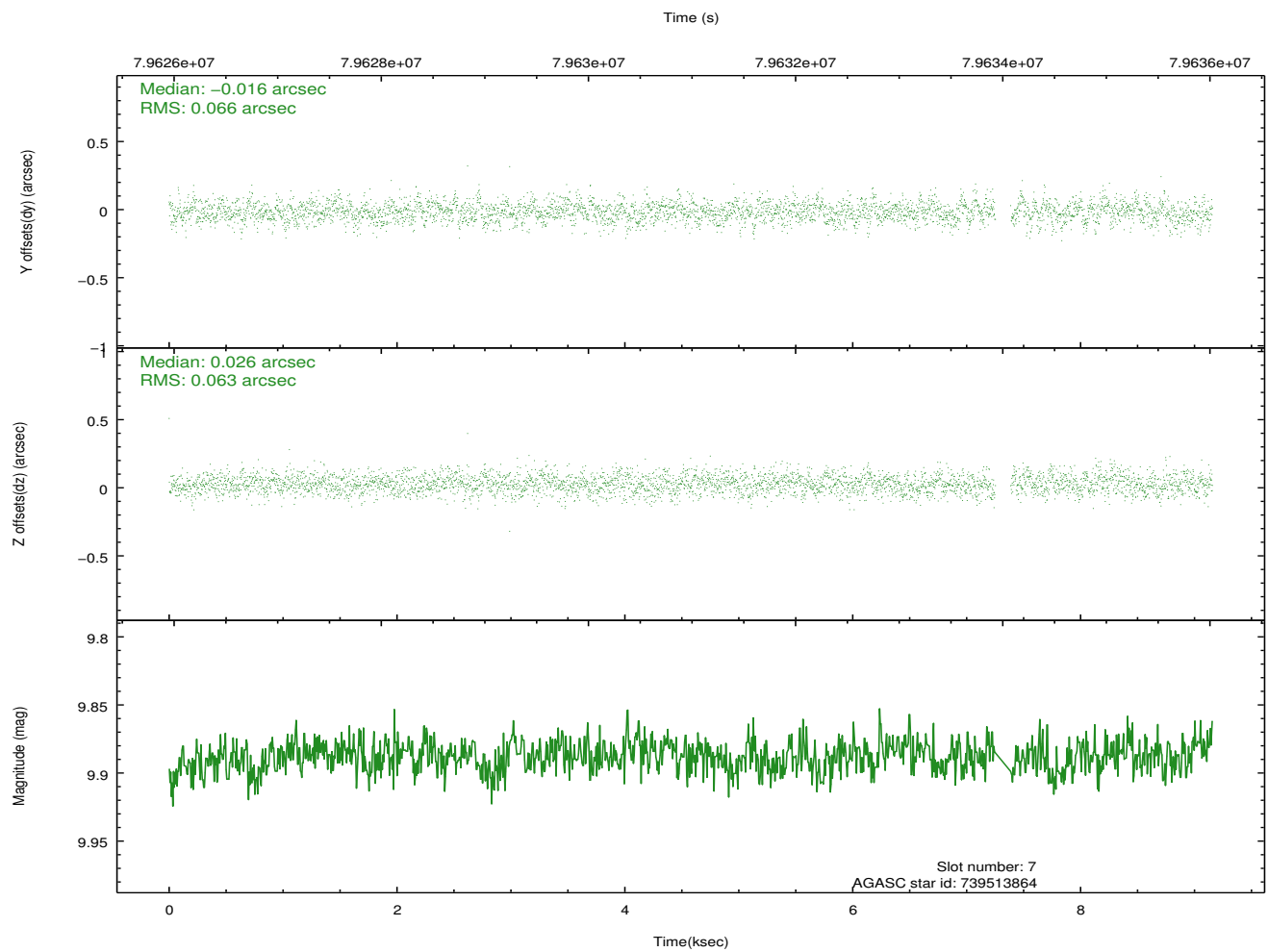
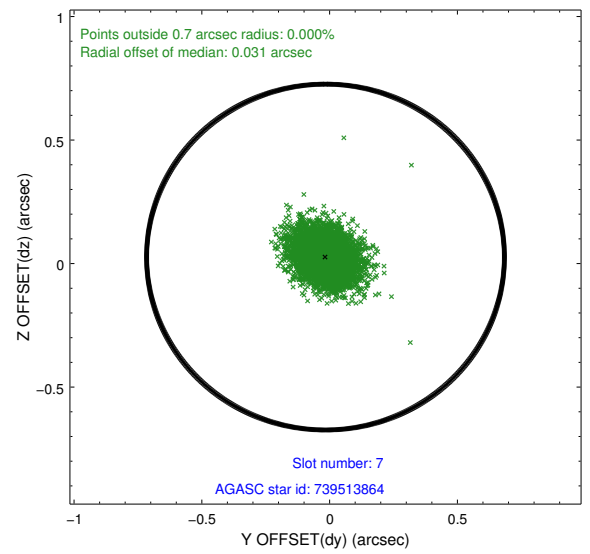
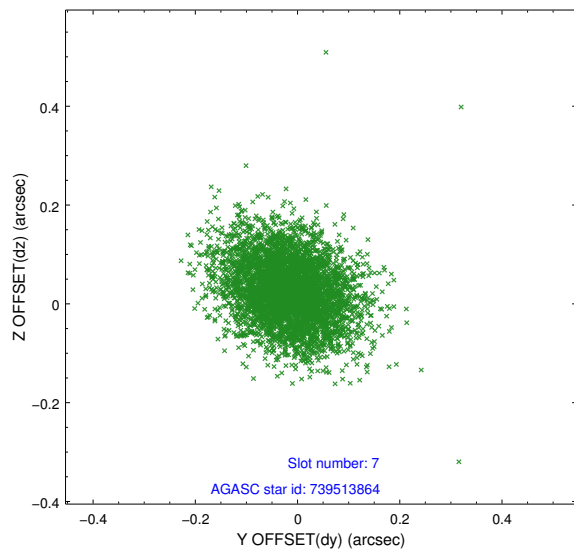
2.4.3 Slot 5



2.4.4 Slot 6

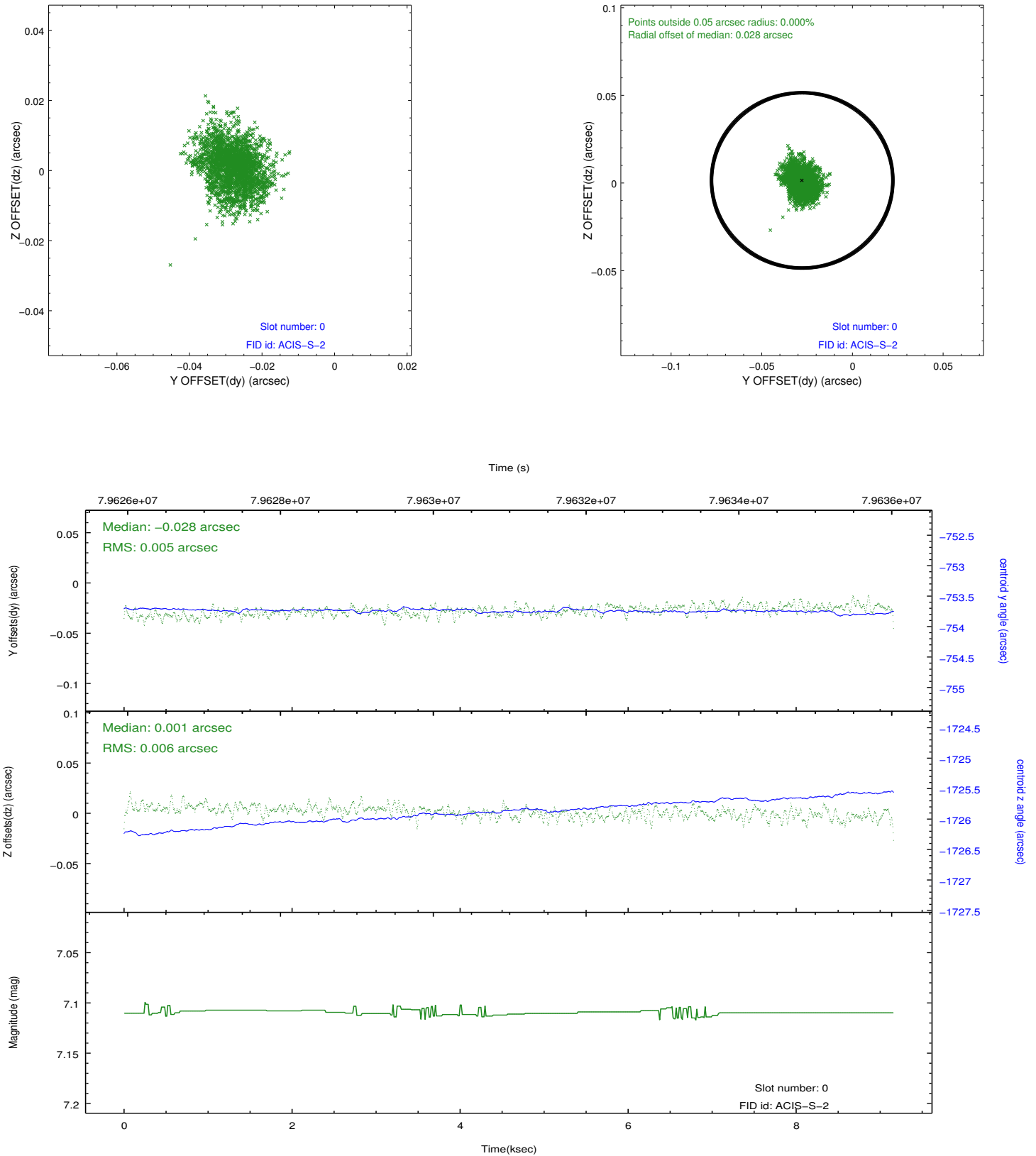


2.4.5 Slot 7

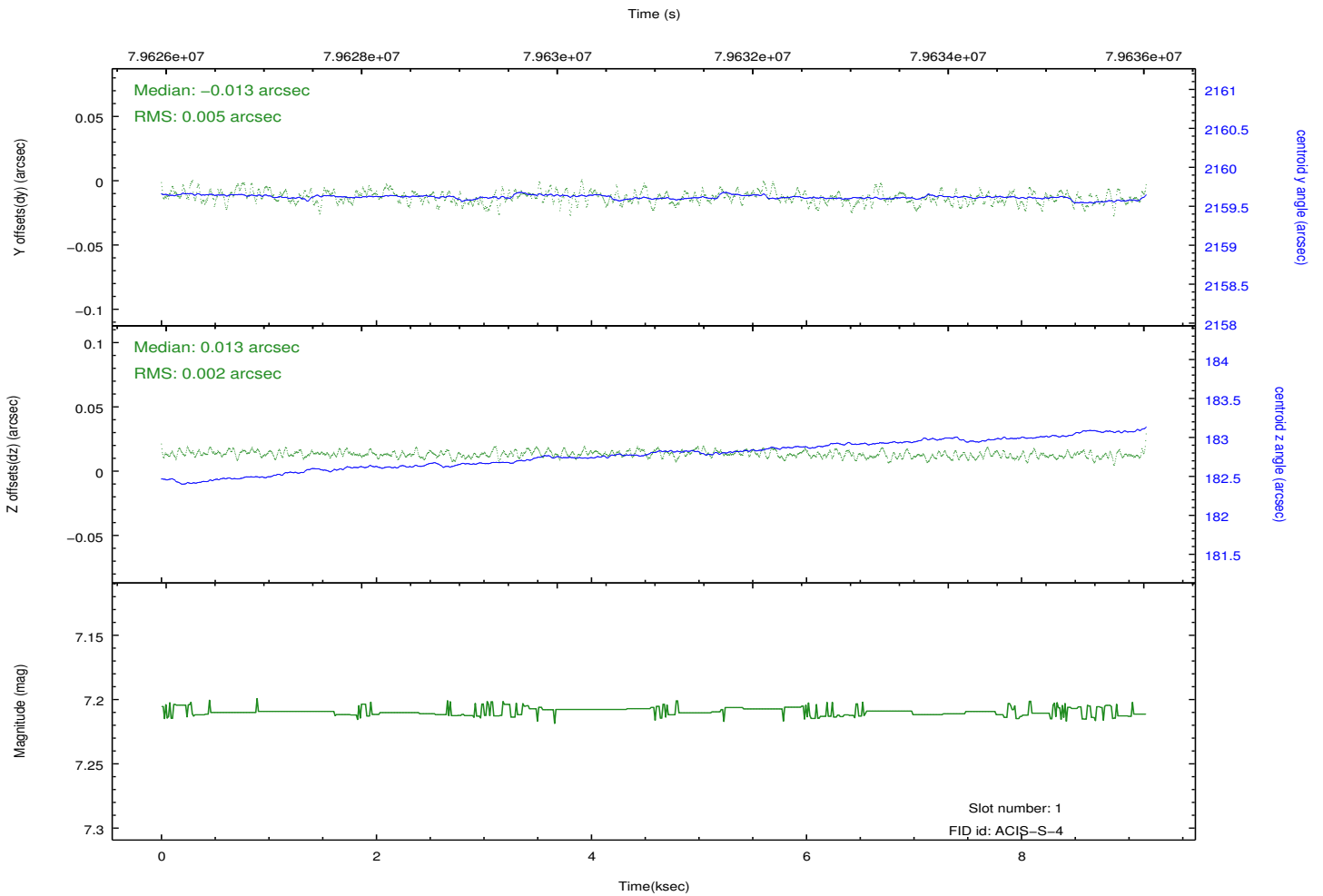
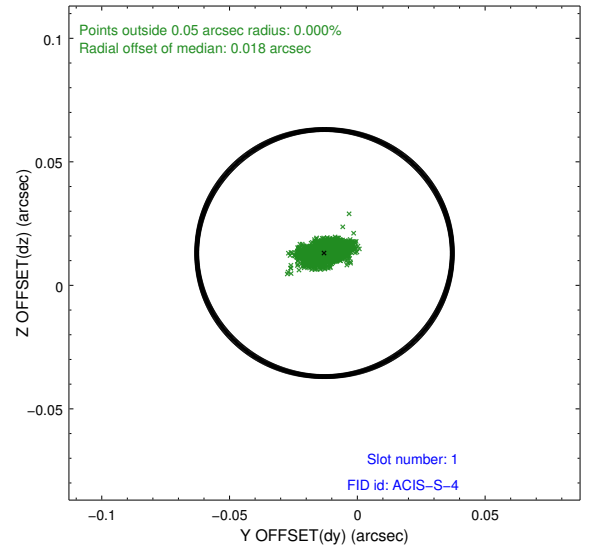
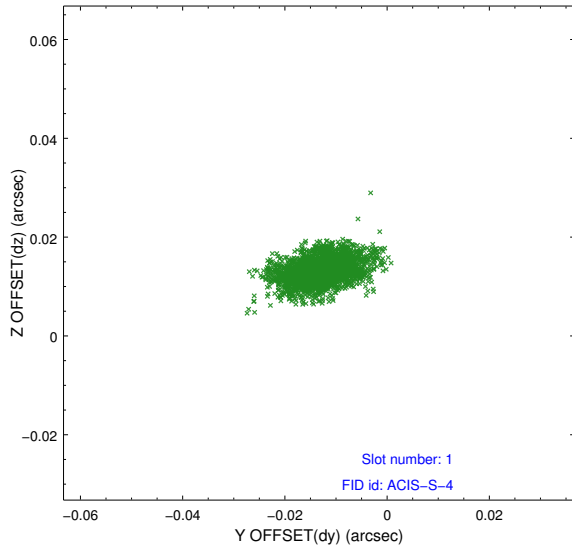


2.5 FID Slots

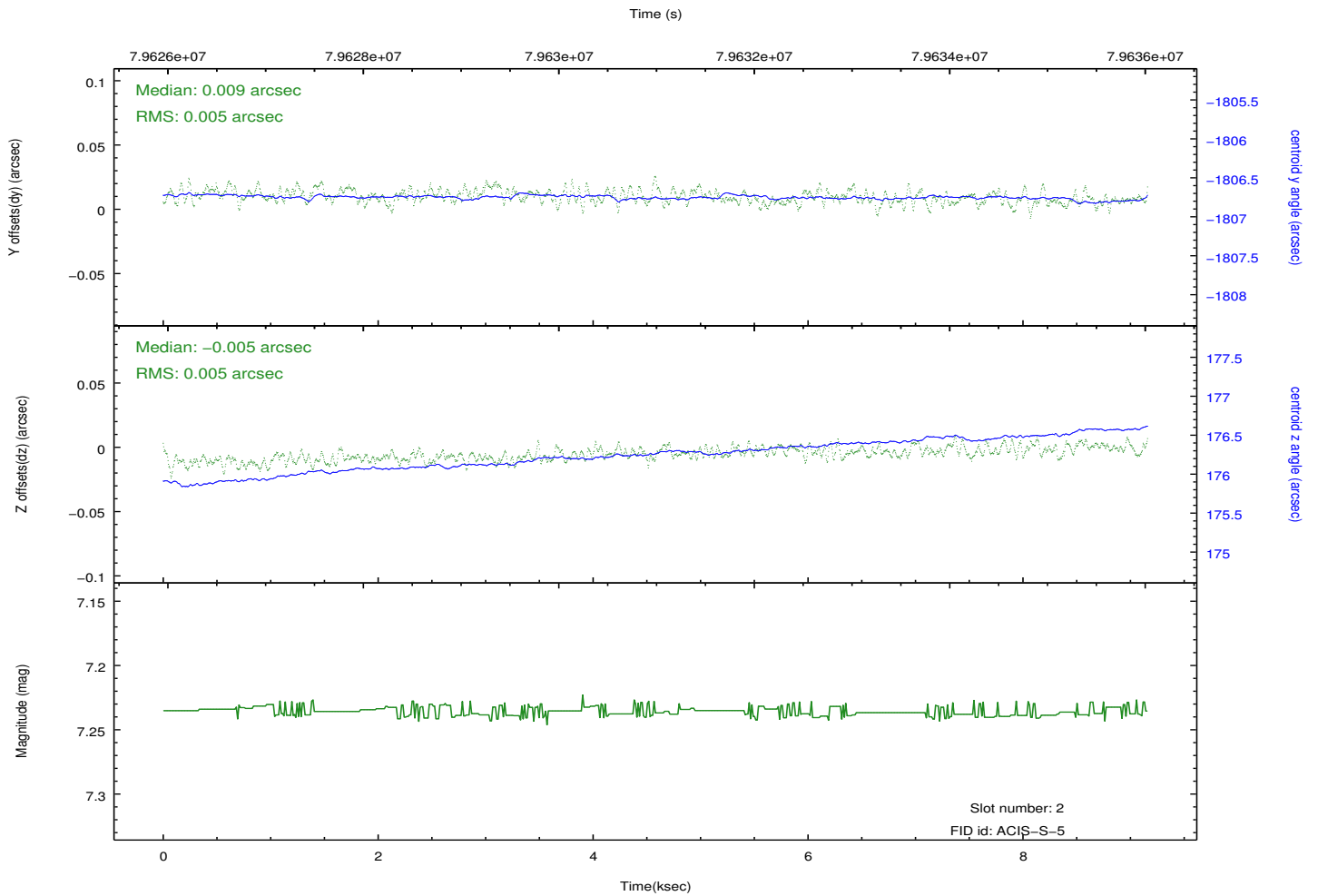
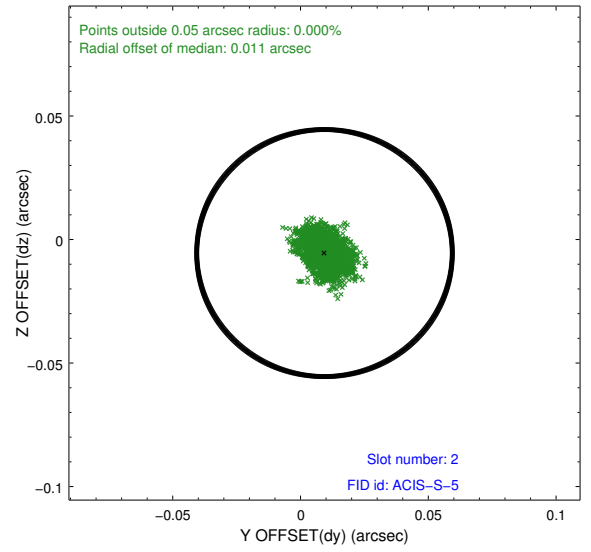
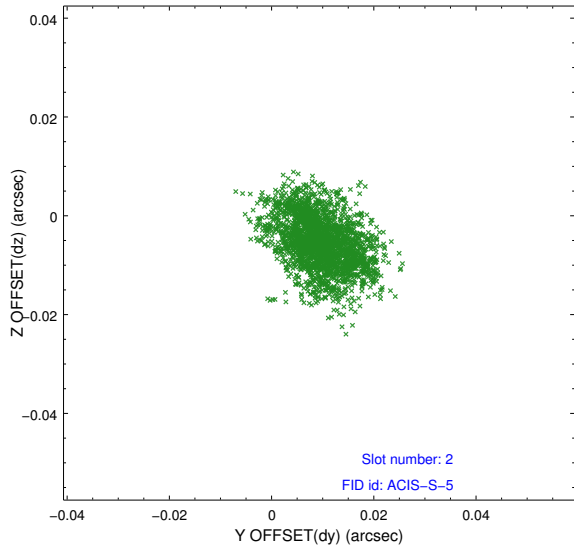
2.5.1 Slot 0



2.5.2 Slot 1



2.5.3 Slot 2



A Summary

A.1 Status

V&V Scientist	Beth Sundheim
V&V Date (YYYY-MM-DD)	2012.09.04
V&V Edition	1
V&V Disposition and Status	OK
V&V Charge Time	9.155

A.2 Comments