

V&V Reference Report

L2 ASCDS Version : 8.2.1

Observation 62435 - L2 Version 3
Chandra X-Ray Center

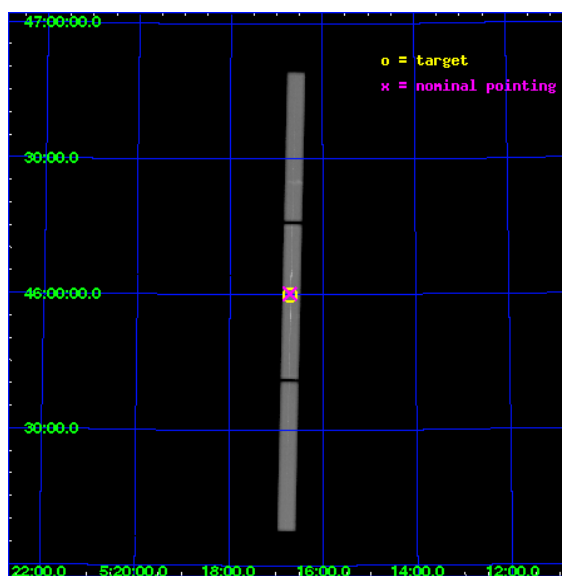
L2 Processing Date : Apr 28 2010

Contents

1	Front	2
2	OBI	3
2.1	OBI	3
2.1.1	Images	3
2.1.2	Parameters	4
2.1.3	Events	4
2.2	Compared Parameters	5
2.3	Aspect	6
2.4	Star Slots	9
2.4.1	Slot 3	9
2.4.2	Slot 4	10
2.4.3	Slot 5	11
2.4.4	Slot 6	12
2.4.5	Slot 7	13
2.5	FID Slots	14
2.5.1	Slot 0	14
2.5.2	Slot 1	15
2.5.3	Slot 2	16
3	Gratings	17
3.1	LETG Arm	17
A	Summary	19
A.1	Status	19
A.2	Comments	19

1 Front

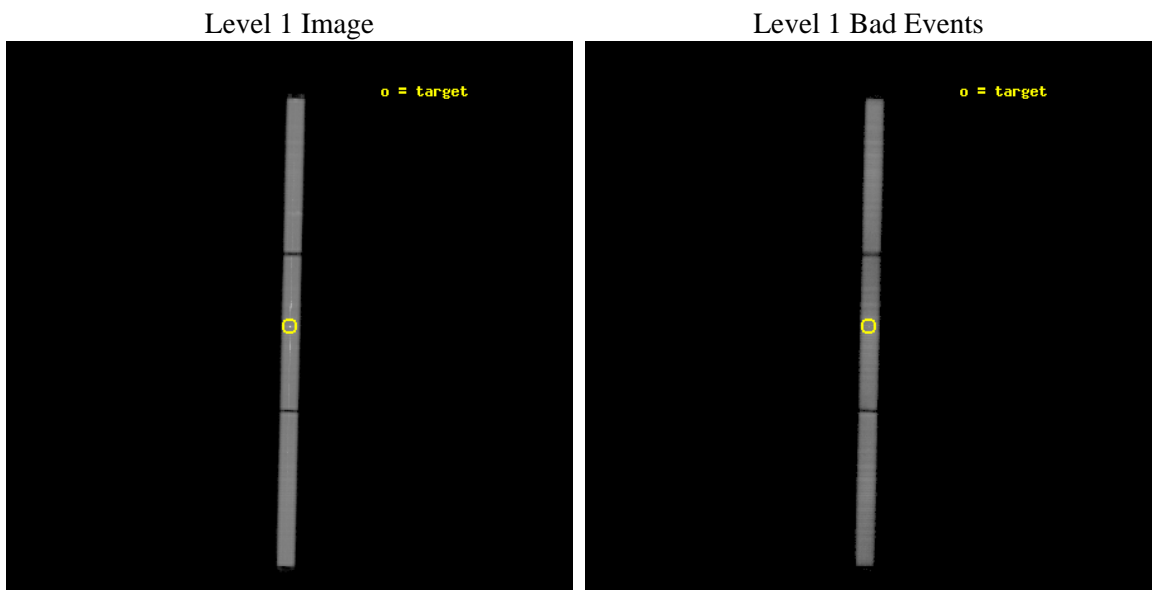
seq_num	290136	Sequence number
obs_id	62435	Observation id
title	 	Proposal title
observer	Dr. CXC Calibration	Principal investigator
object	CAPELLA	Source name
ra_targ	79.17625	Observer's specified target RA
dec_targ	45.997889	Observer's specified target Dec
ra_nom	79.17703469975	Nominal RA
dec_nom	46.003309475666	Nominal Dec
roll_nom	91.185612657607	Nominal Roll
revision	3	Processing version of data
ontime	32781.807426959	[s]
livetime	32457.534536467	Ontime multiplied by DTCOR
l2events	2088710	Number of level 2 events



2 OBI

2.1 OBI

2.1.1 Images



2.1.2 Parameters

obi_num	0	Obi number	sched_exp_time	40000.000000	Scheduled observation exposure time
ascdsver	8.2.1	Processing system revision	ontime	32781.807426959	[s]
caldbver	4.1.5	 	ll events	3229103	Number of level 1 events
date	2010-01-13T08:17:50	Date and time of file creation			
revision	4	Processing version of data			

2.1.3 Events

Level 1 Events

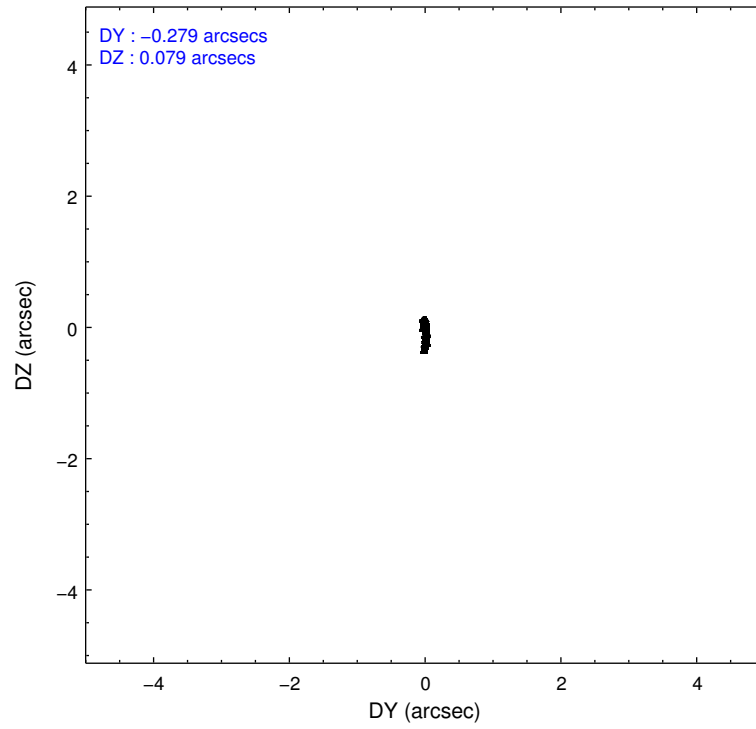
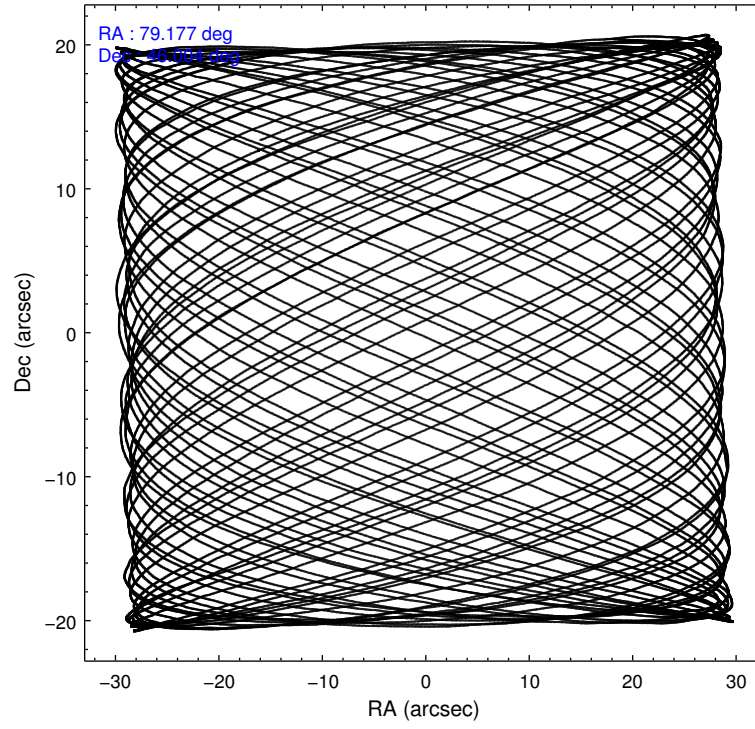
	segment 1	segment 2	segment 3
level 1 events	1046038	1140378	1042687
rejected events	268167	281649	326621
rejected %	25%	24%	31%

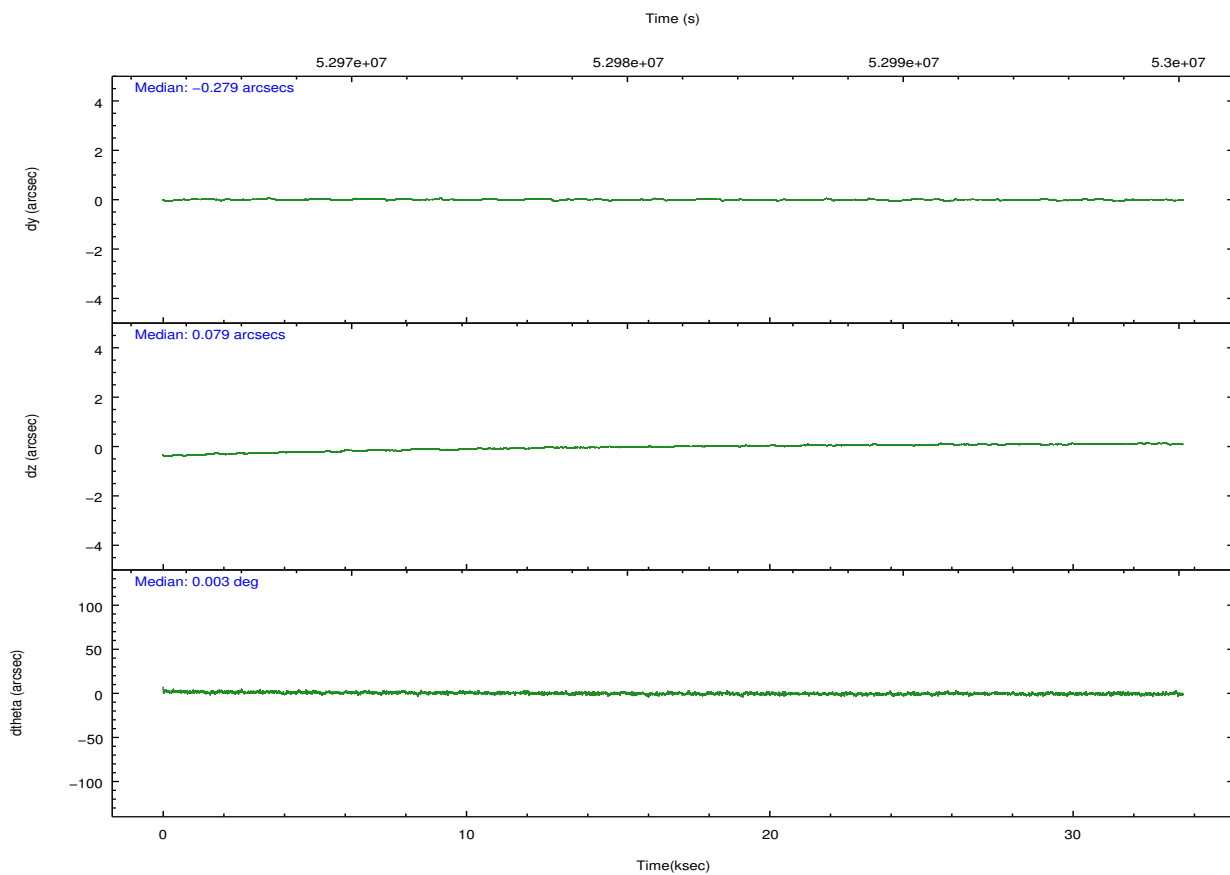
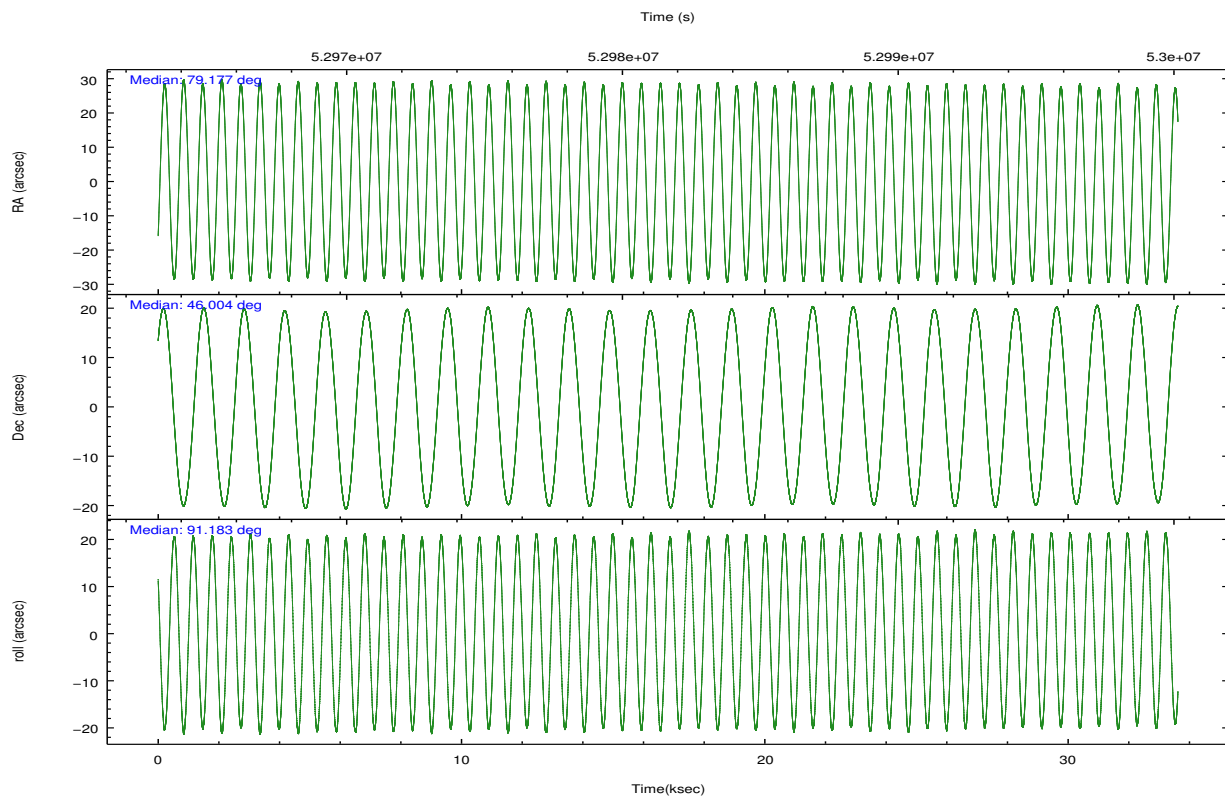
2.2 Compared Parameters

Parameter	Planned	Actual
Instrument	HRC	HRC
Detector	HRC-S	HRC-S
Grating	LETG	LETG
Data mode	OBSERVING	OBSERVING
Observation mode	POINTING	POINTING
Pointing RA	79.199341	79.17703469974971
Pointing Dec	45.978868	46.00330947566582
Pointing Roll	91.102233	91.18561265760742
Window start time	52956664.184000	52956664.184000
Window stop time	52999264.184000	52999264.184000
SIM focus pos (mm)	-1.429586	-1.277397337923587
SIM defocus (mm)	0.1037507710433287	0.2559393014807094
SIM translation stage pos (mm)	250.455976	250.466033080201
SIM translation stage offset (mm)	0	-0.01005468664627074
Observation start time	52958464.184000	52964841.540398
Observation start date	1999-09-05T22:40:00	1999-09-06T00:27:21
Observation end time	52998464.184000	52998599.40411
Observation end date	1999-09-06T09:46:40	1999-09-06T09:49:59

Parameter	Planned	Actual
Obspar format version number	6	6
Obspar file type	PREDICTED	ACTUAL
Obspar update status	NONE	UPDATED

2.3 Aspect



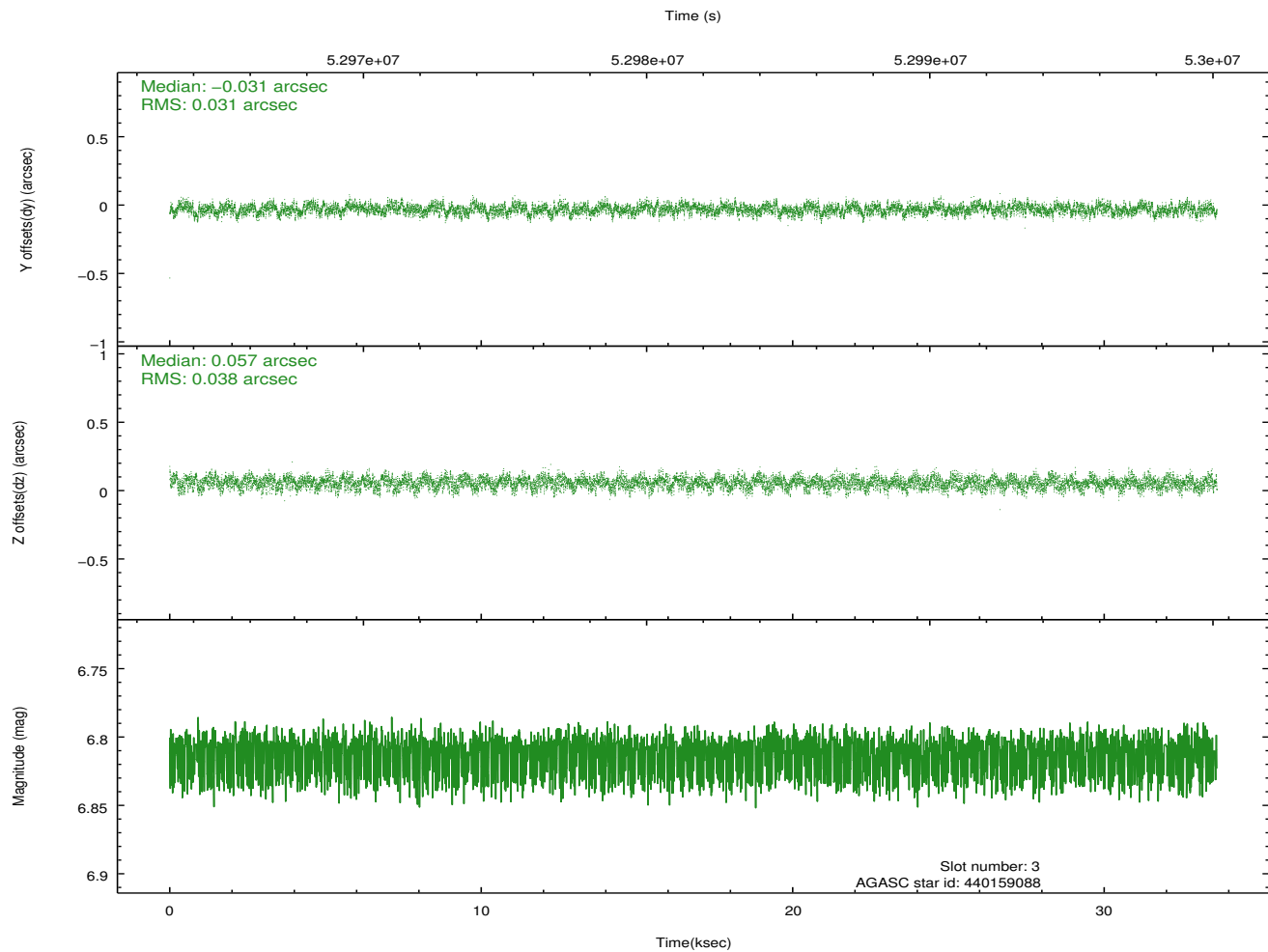
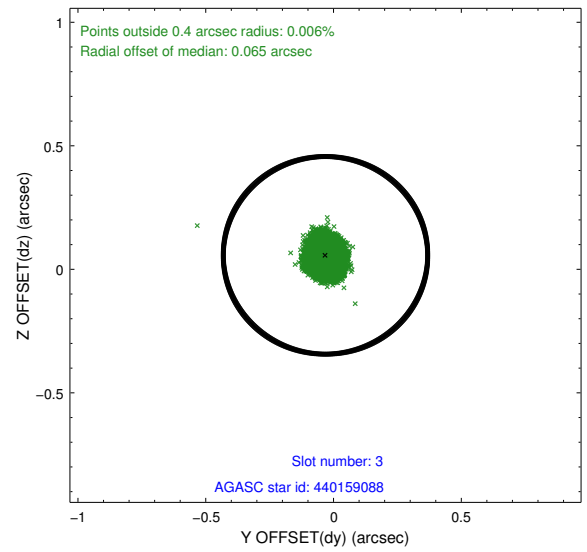
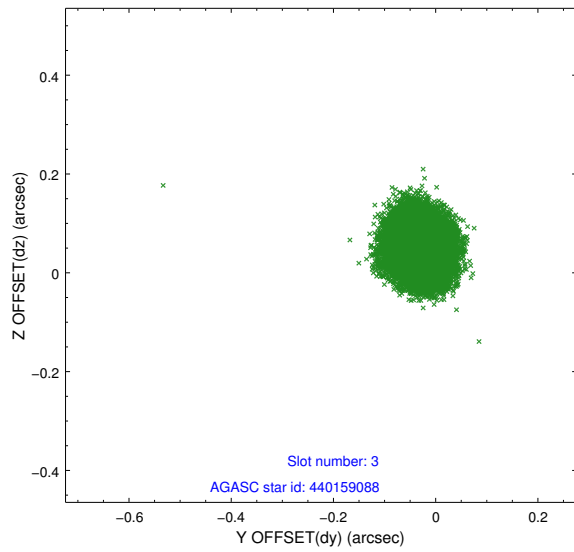


Slot Statistics

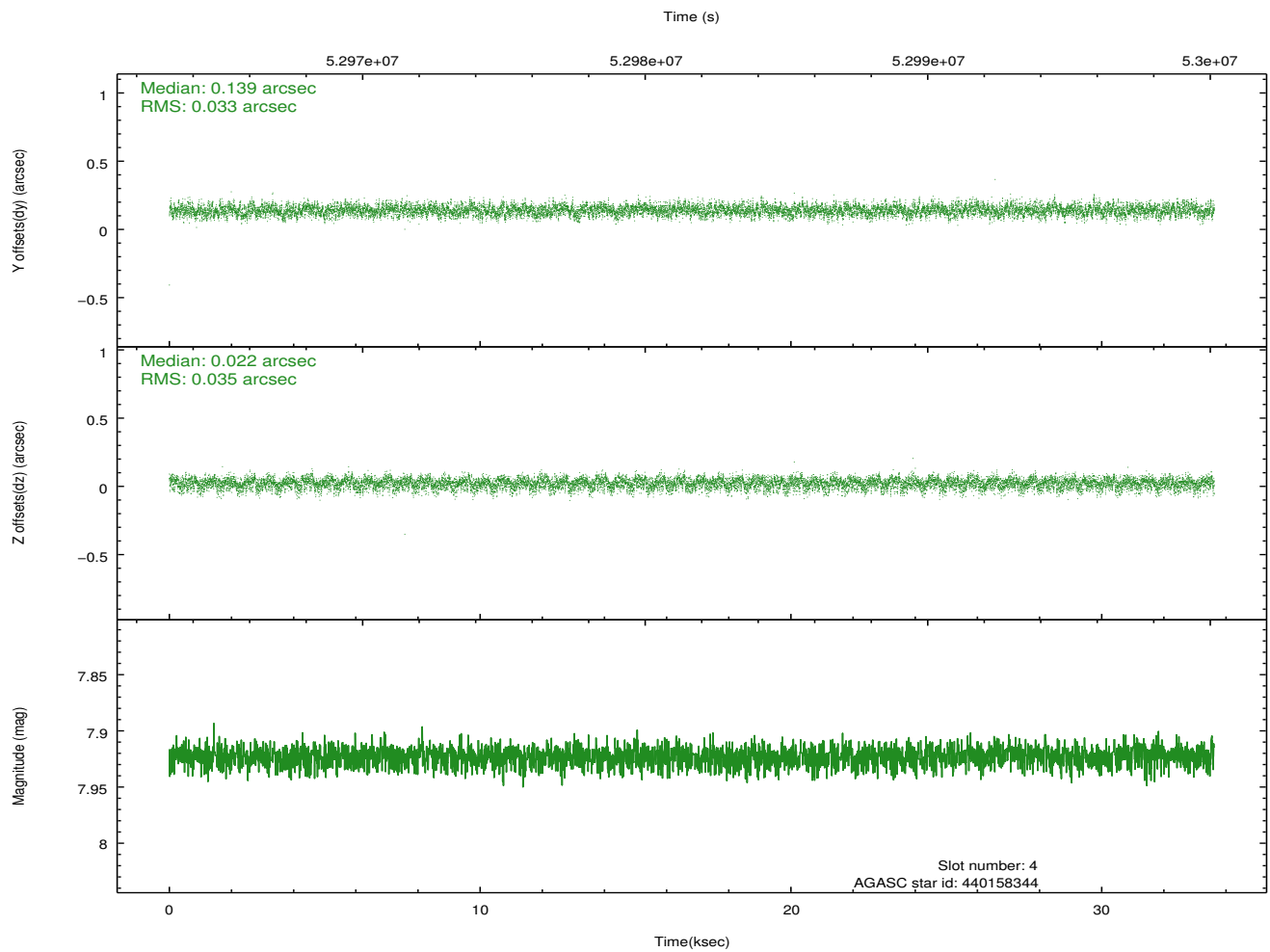
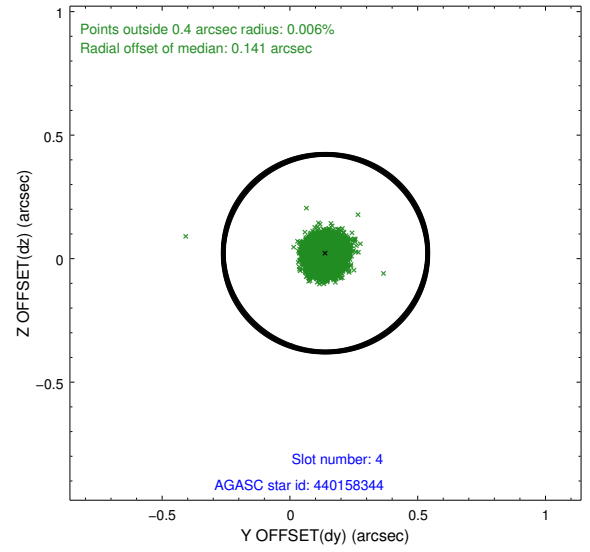
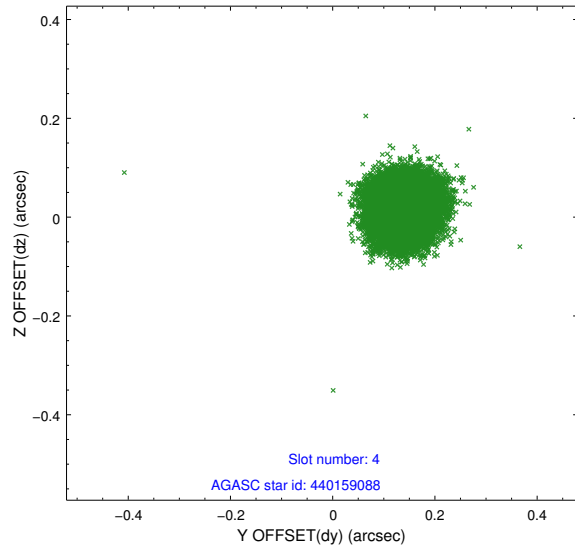
slot	status	id	mag	n_pts	med_dy	med_dz	dr1	dr2	ra	dec	mean_y	mean_z
0	FID	HRC-S-1	7.00	16401	0.146	-0.083	0.007	0.013	0.000000	0.000000	-1153.76	-448.20
1	FID	HRC-S-3	7.01	16401	0.100	-0.107	0.008	0.014	0.000000	0.000000	-1156.48	581.29
2	FID	HRC-S-4	6.98	16400	0.142	-0.107	0.005	0.010	0.000000	0.000000	1244.58	583.63
3	GUIDE	440159088	6.81	16402	-0.031	0.057	0.053	0.083	79.453034	46.128063	524.78	-643.38
4	GUIDE	440158344	7.92	16402	0.139	0.022	0.051	0.082	79.344888	45.394991	-2109.16	-327.83
5	GUIDE	440149808	8.42	16400	-0.066	-0.086	0.055	0.089	78.873930	46.405955	1553.15	777.73
6	GUIDE	440145944	9.10	16396	0.091	0.102	0.075	0.121	80.083717	45.428844	-2011.20	-2196.33
7	GUIDE	438440232	9.47	16384	-0.130	-0.094	0.098	0.155	78.262303	46.626220	2386.96	2270.83

2.4 Star Slots

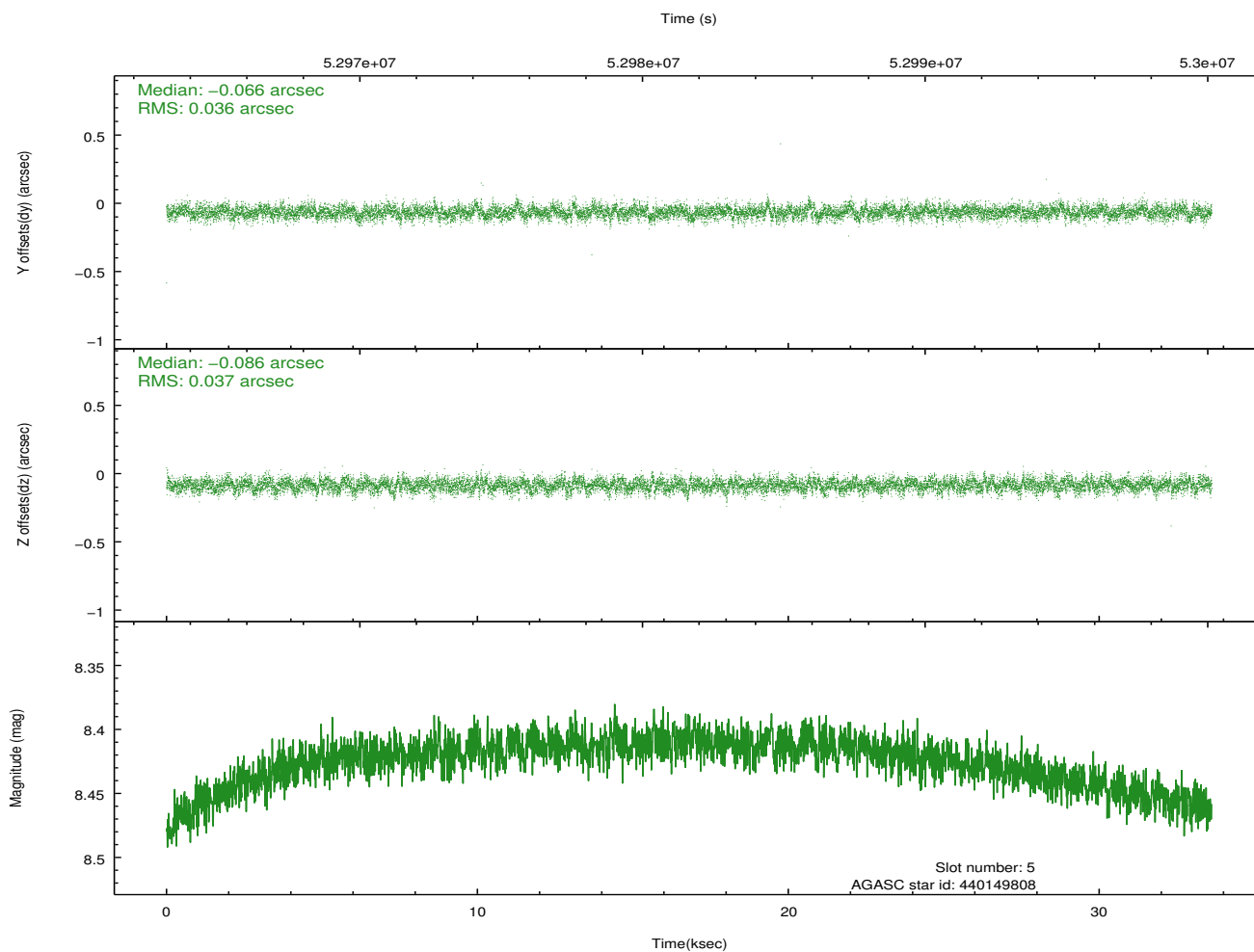
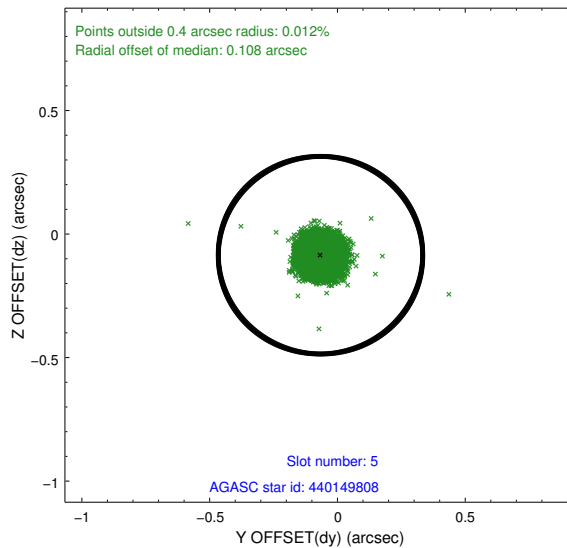
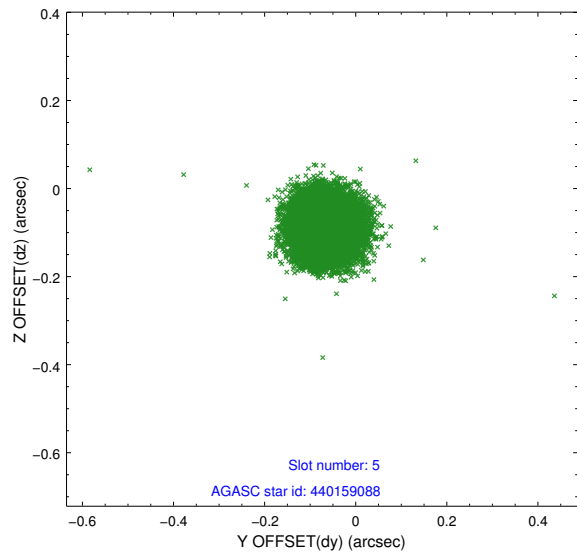
2.4.1 Slot 3



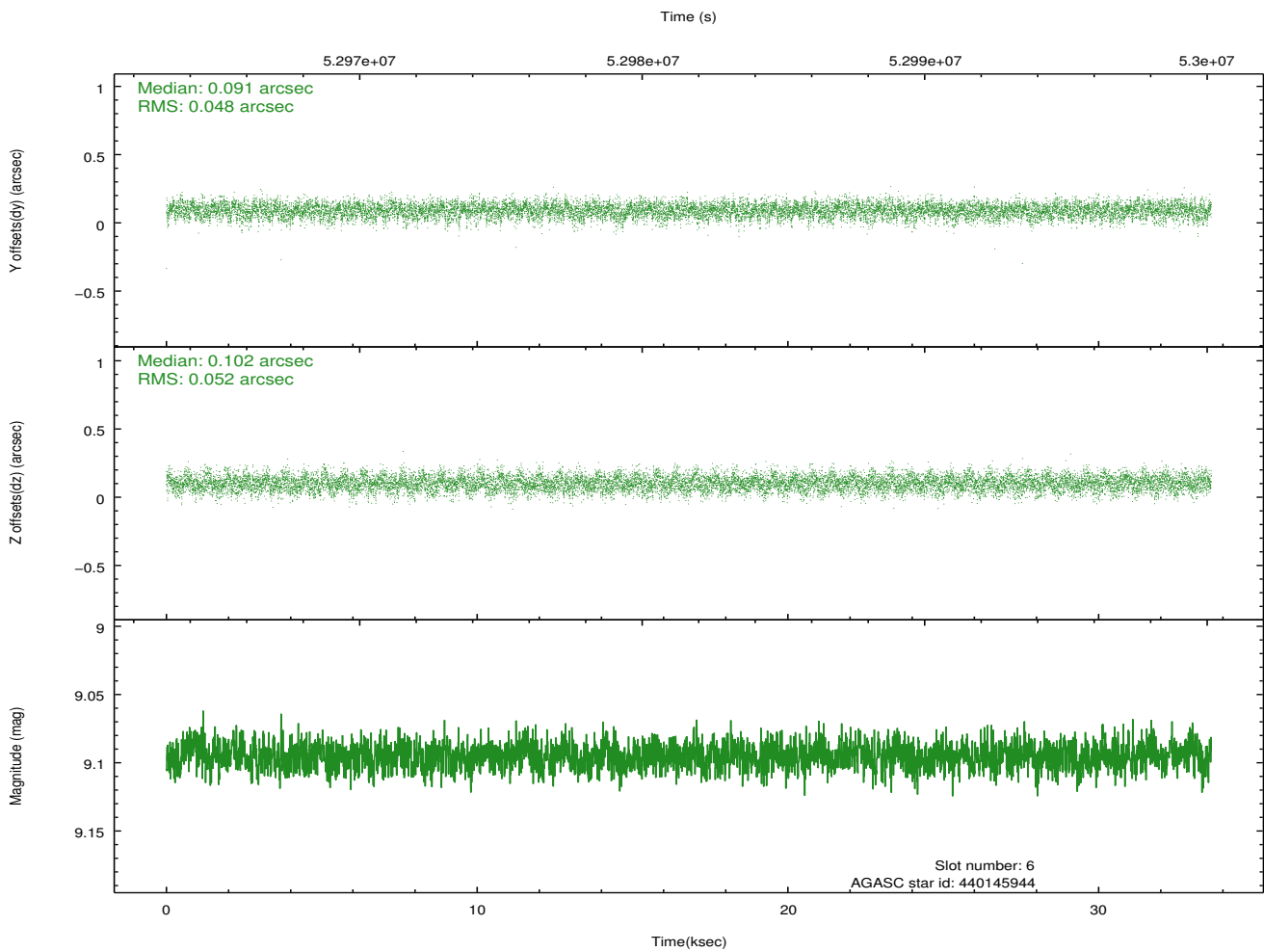
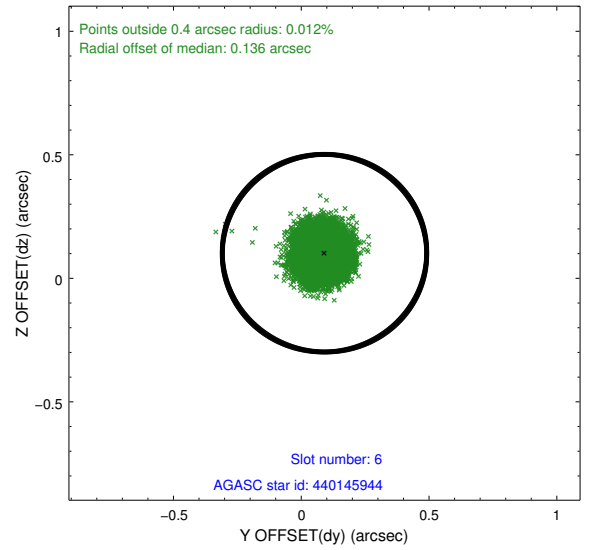
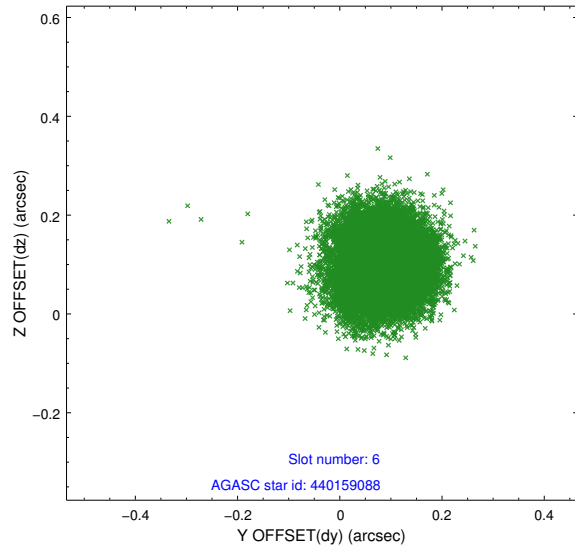
2.4.2 Slot 4



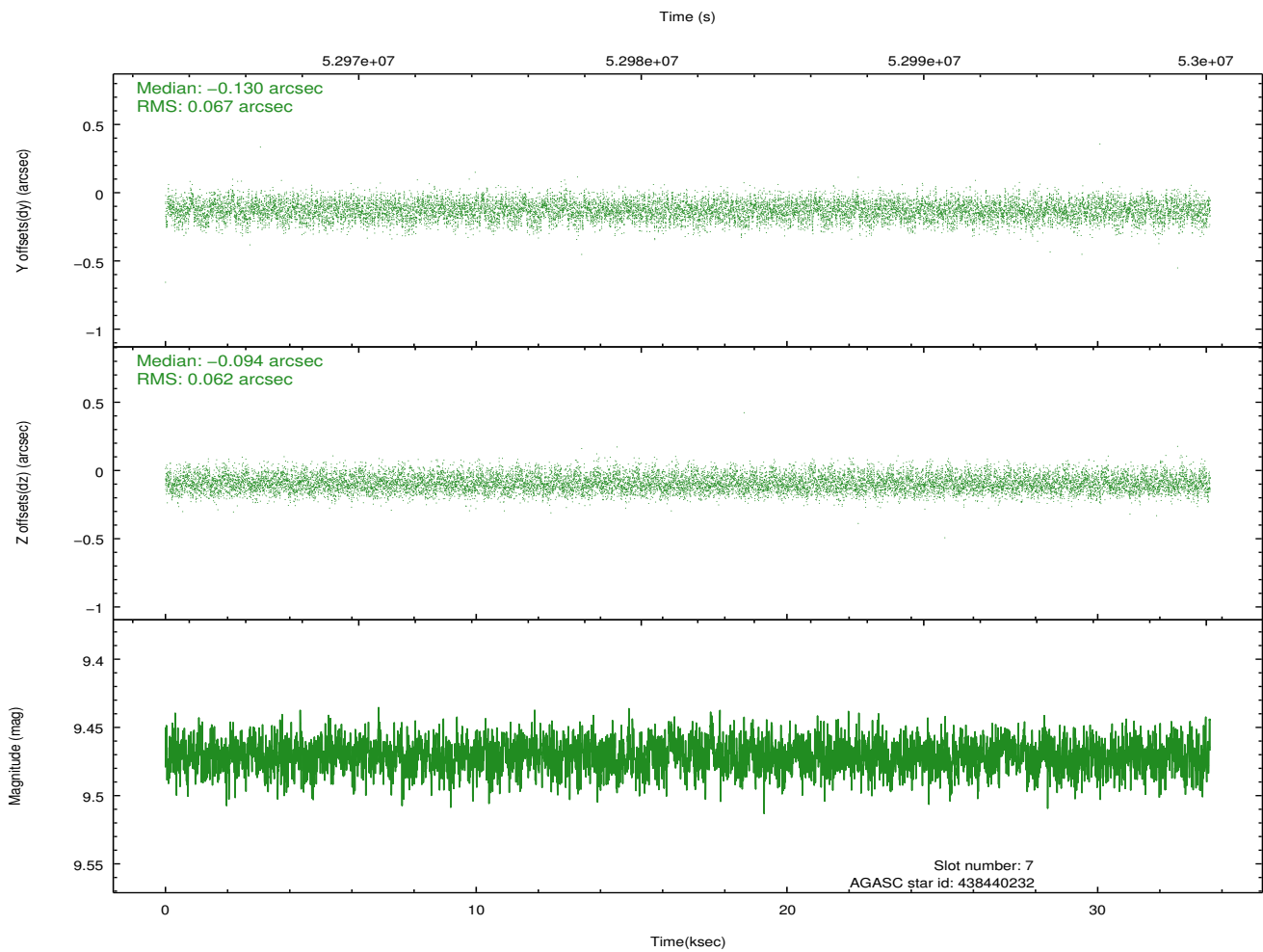
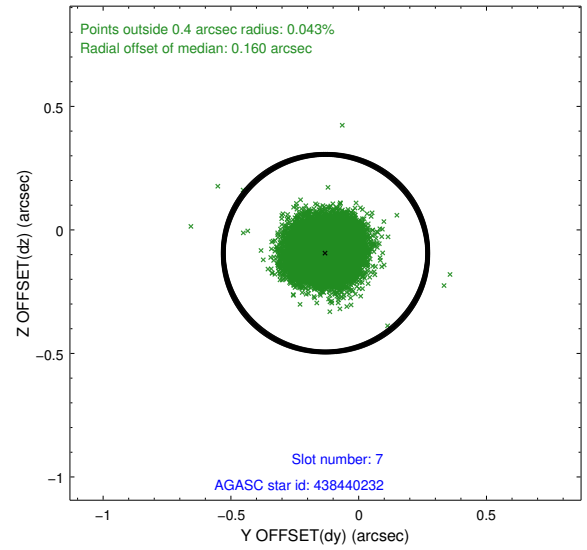
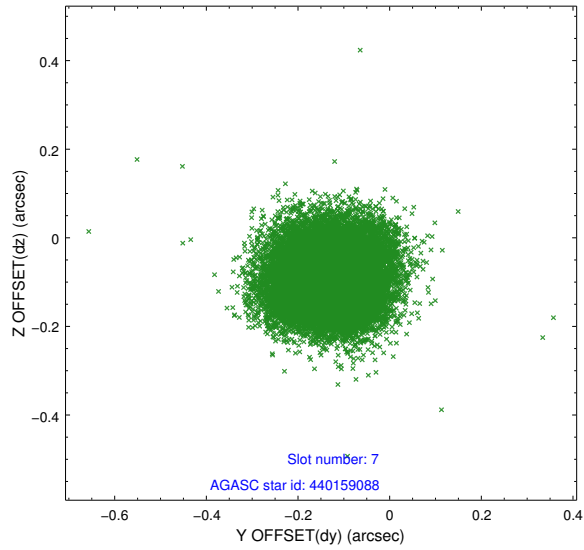
2.4.3 Slot 5



2.4.4 Slot 6

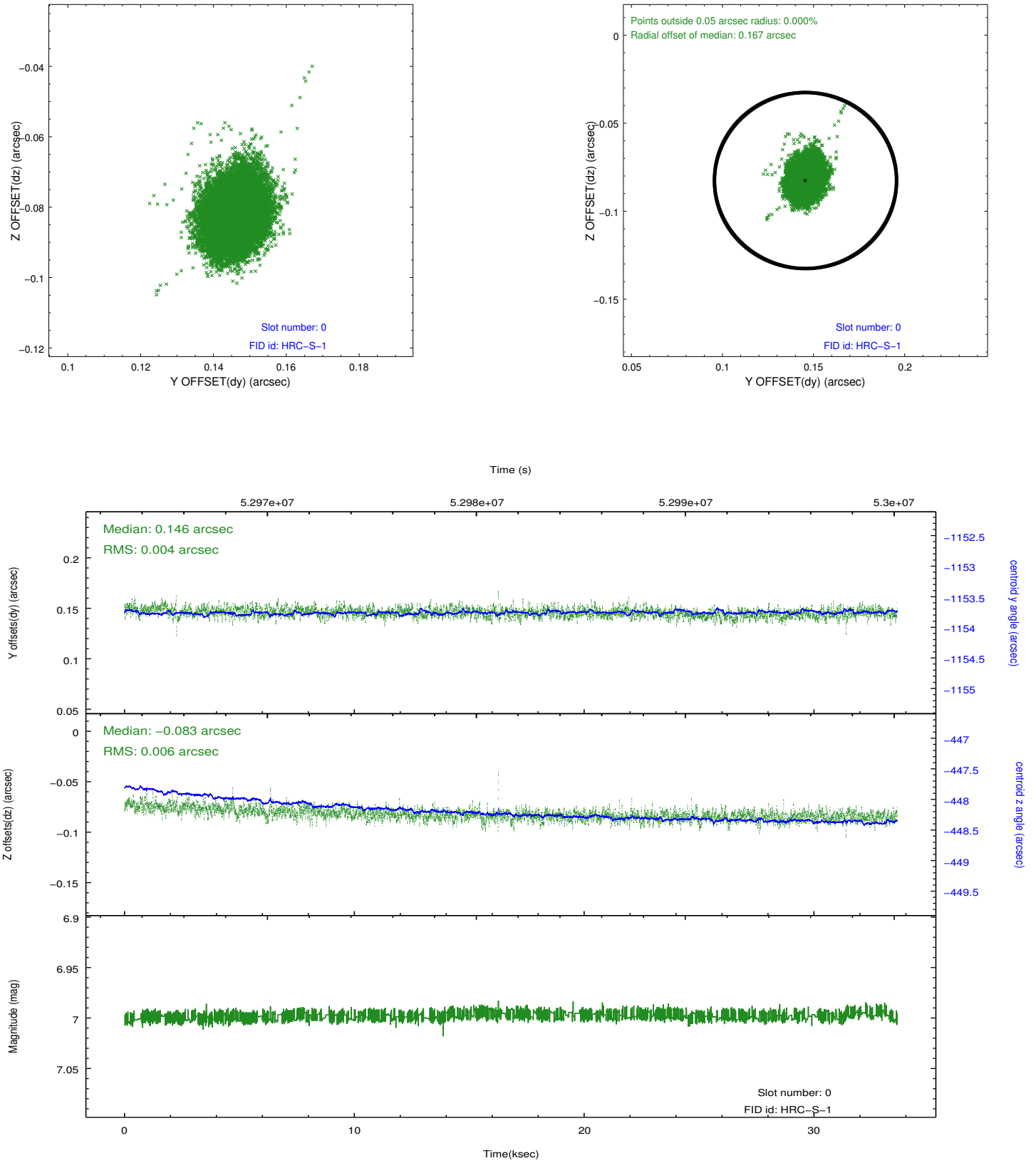


2.4.5 Slot 7

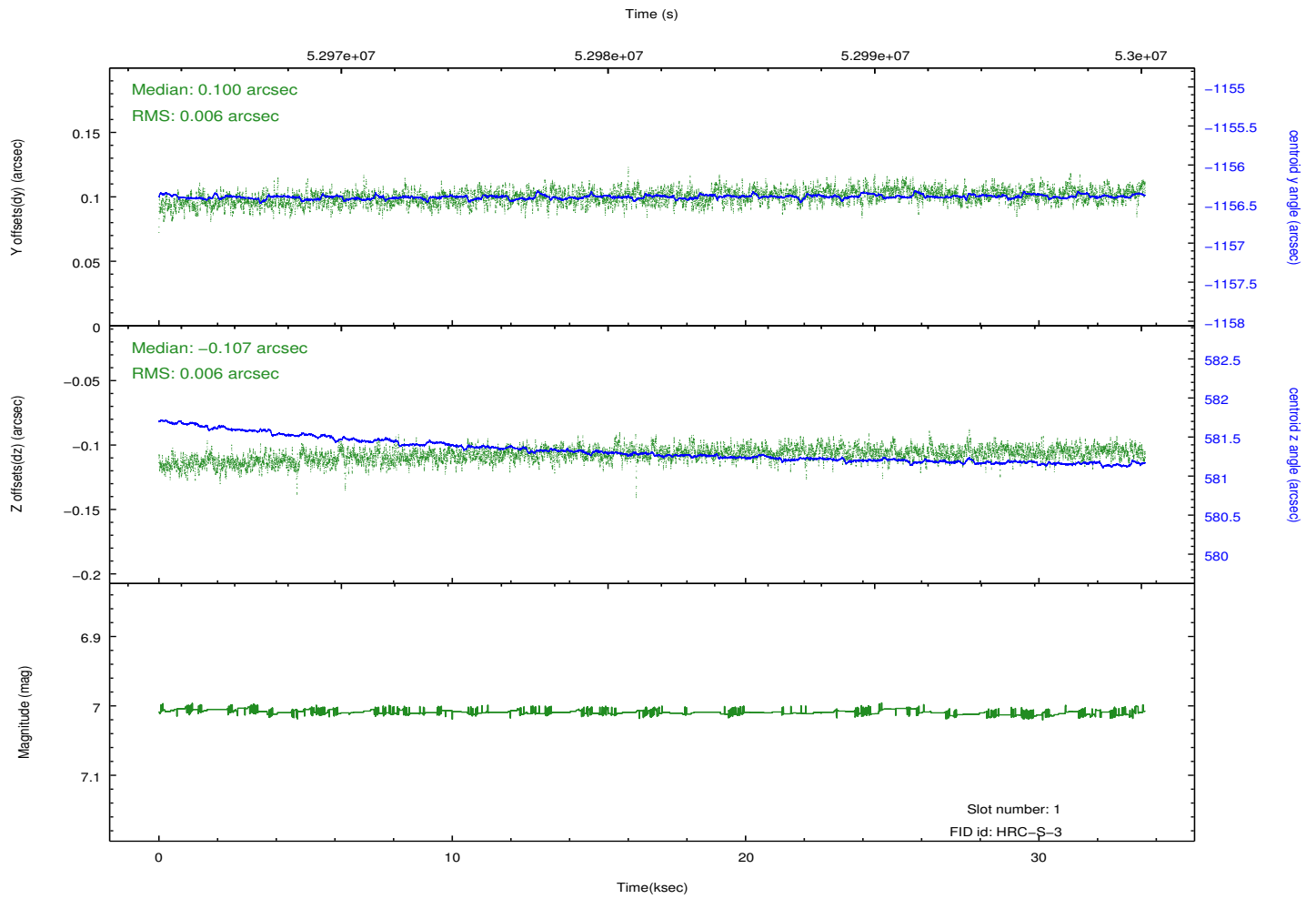
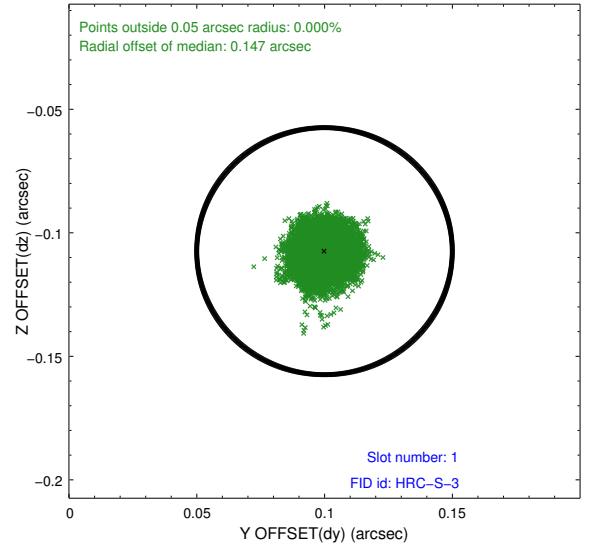
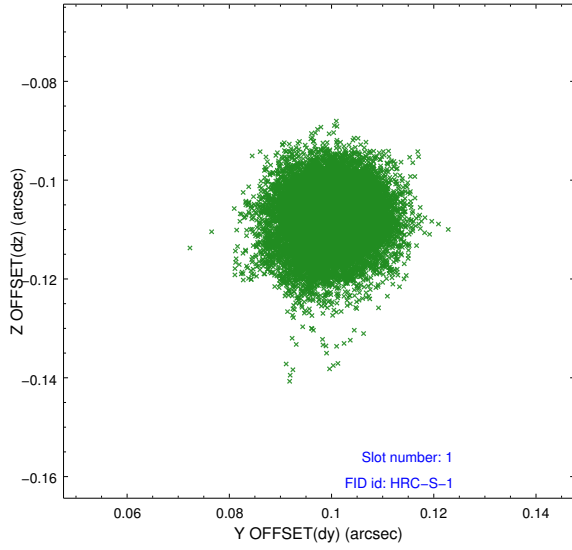


2.5 FID Slots

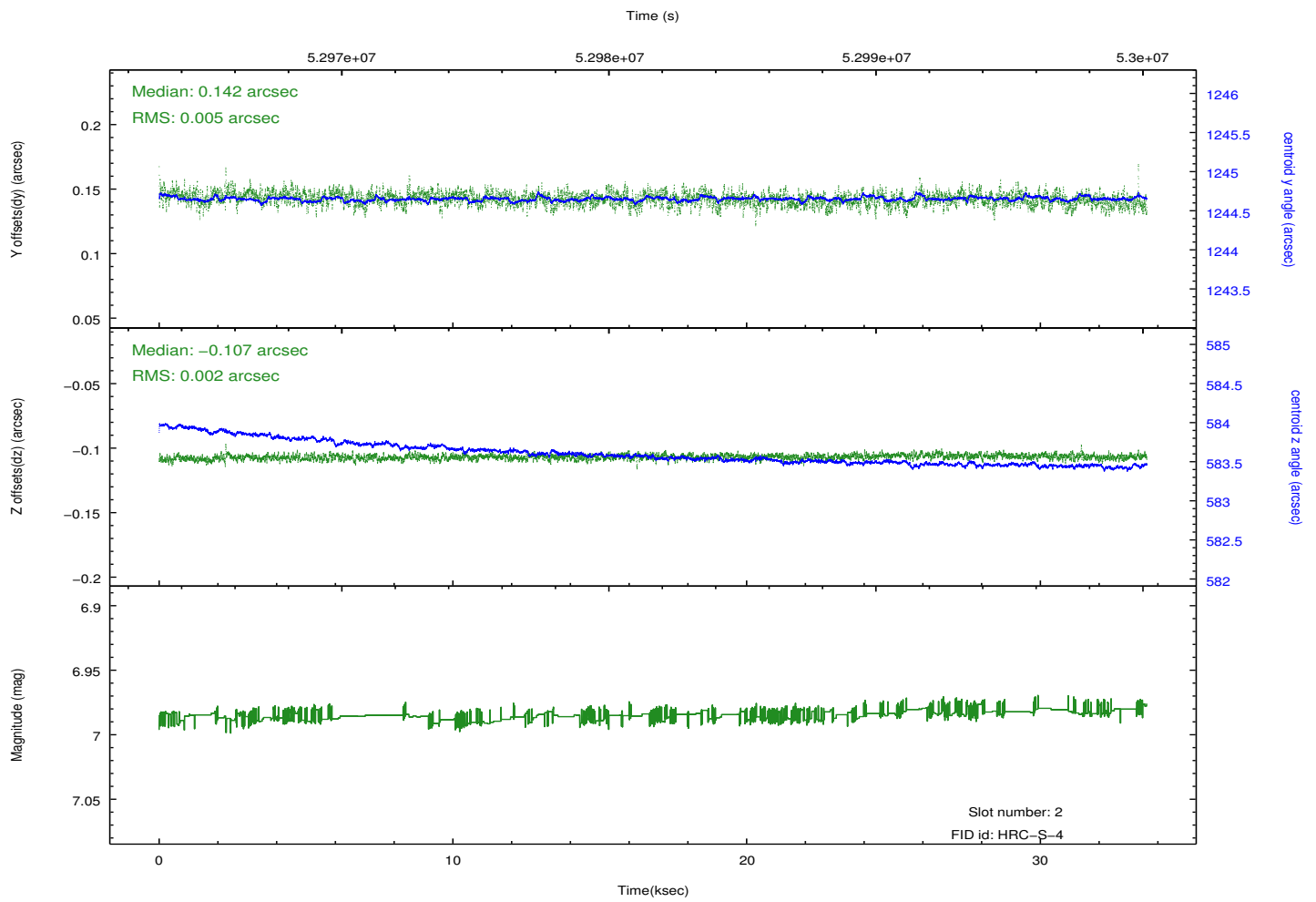
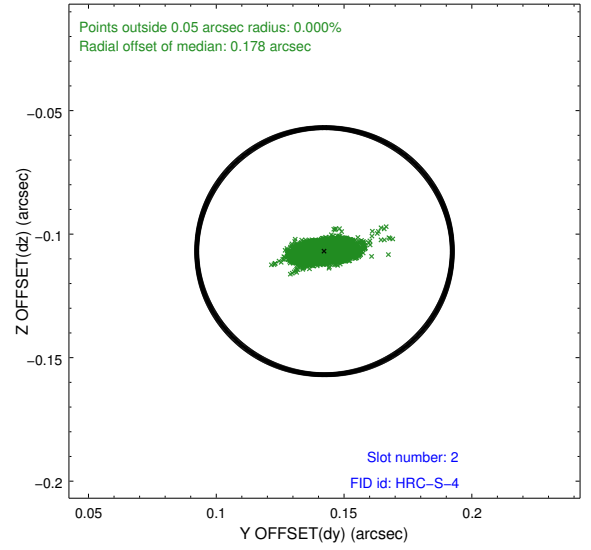
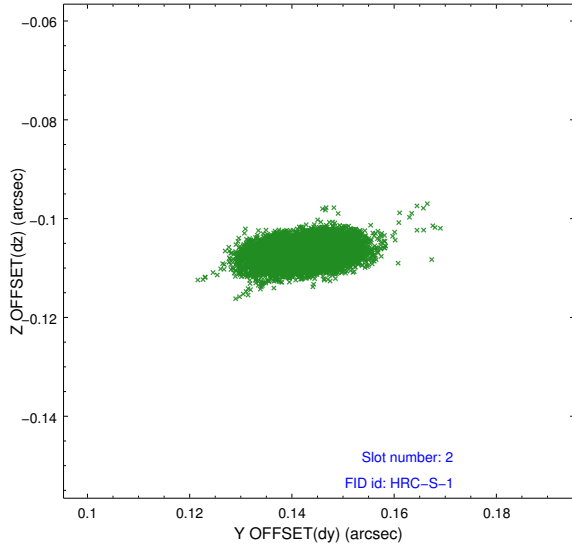
2.5.1 Slot 0



2.5.2 Slot 1

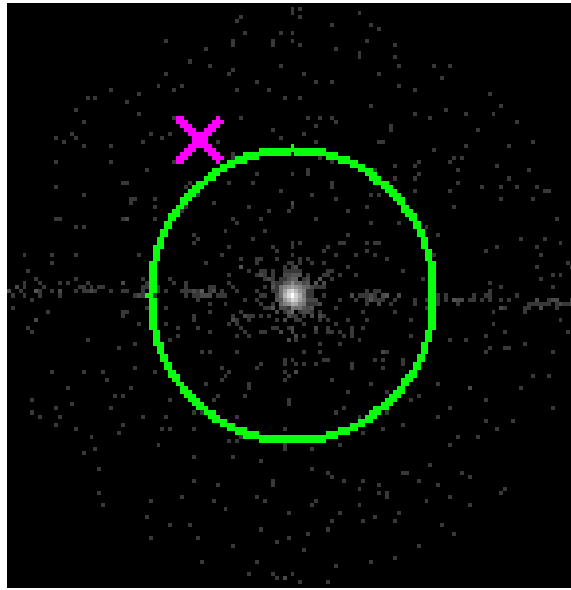


2.5.3 Slot 2

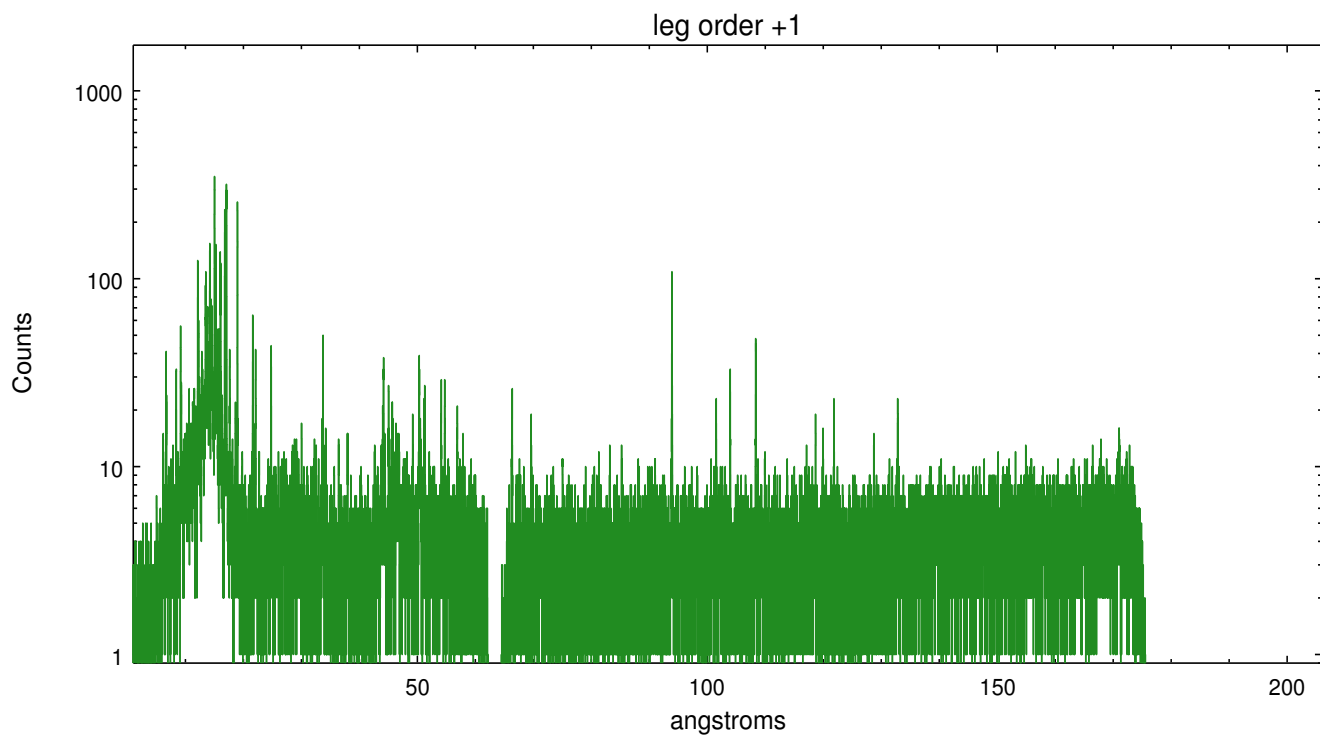
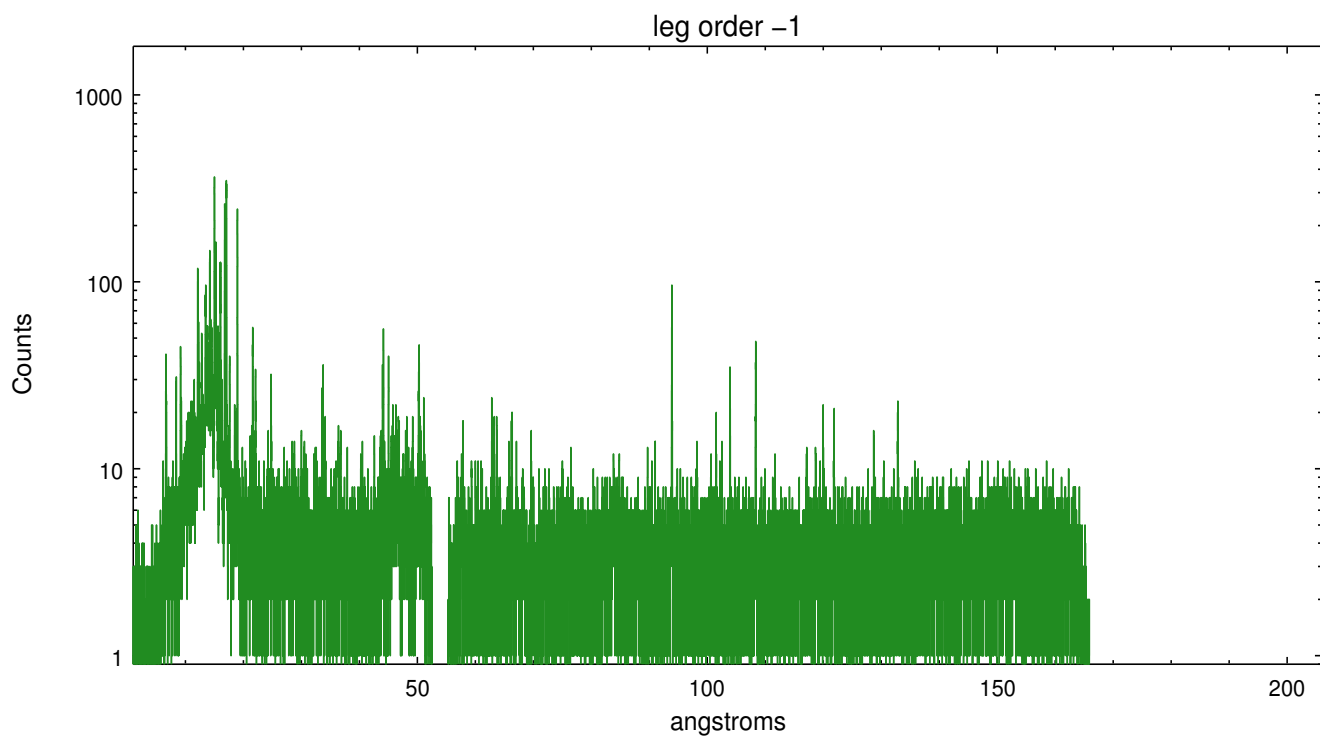


3 Gratings

3.1 LETG Arm



LETG Zero Order



A Summary

A.1 Status

V&V Scientist	Joy Nichols
V&V Date (YYYY-MM-DD)	2010.04.28
V&V Edition	1
V&V Disposition and Status	OK
V&V Charge Time	32.708

A.2 Comments

This is the first observation taken after removing the launch pins and deploying the LETG.

===

Charge time for this ObsId remains at original value of 32.708 ks, although with the current processing the charge time would have been 32.782 ksec.

===

Enhanced count rate near end of observation due to high radiation environment.