

V&V Reference Report

L2 ASCDS Version : 8.5.1.1

Observation 6335 - L2 Version 3
Chandra X-Ray Center

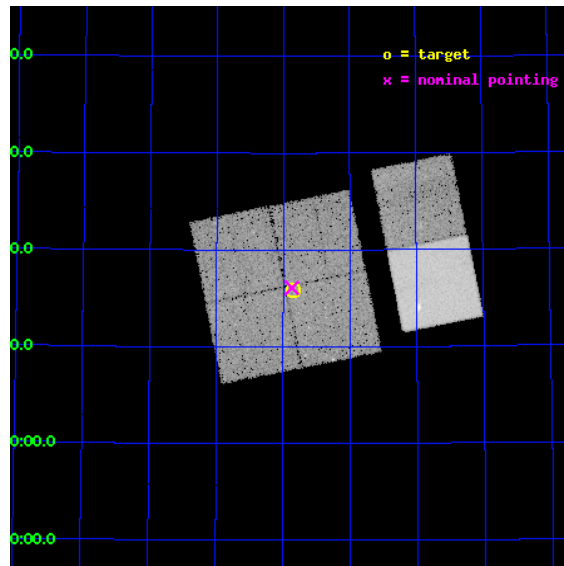
L2 Processing Date : Dec 25 2012

Contents

1	Front	2
2	OBI	3
2.1	OBI	3
2.1.1	Images	3
2.1.2	Bias	3
2.1.3	Parameters	4
2.1.4	Events	4
2.2	Compared Parameters	5
2.3	Aspect	6
2.4	Star Slots	9
2.4.1	Slot 3	9
2.4.2	Slot 4	10
2.4.3	Slot 5	11
2.4.4	Slot 6	12
2.4.5	Slot 7	13
2.5	FID Slots	14
2.5.1	Slot 0	14
2.5.2	Slot 1	15
2.5.3	Slot 2	16
A	Summary	17
A.1	Status	17
A.2	Comments	17

1 Front

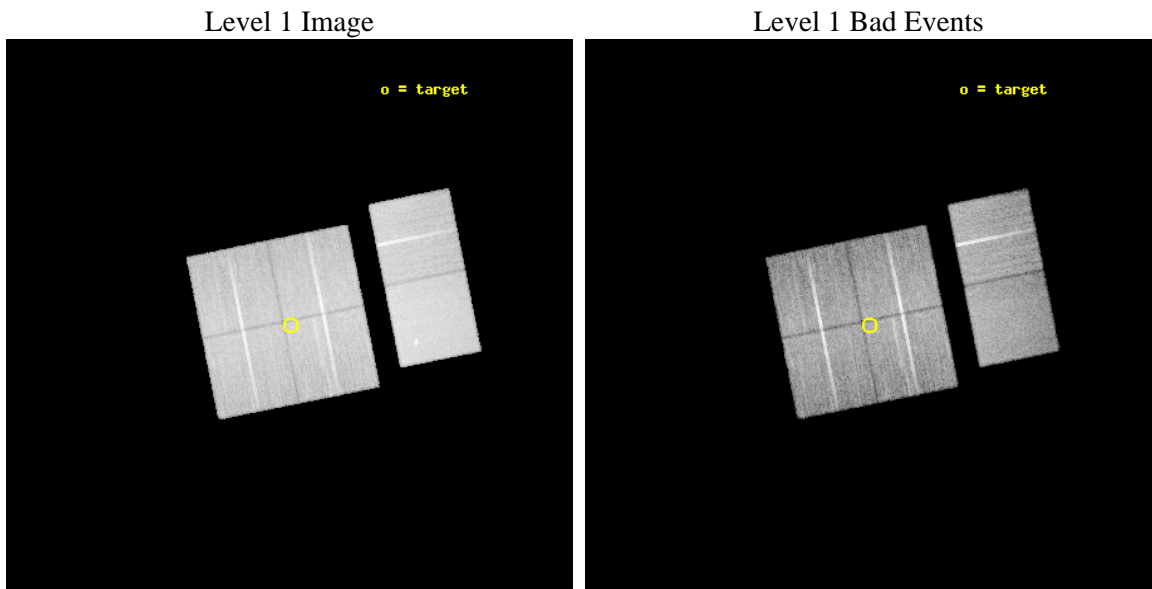
seq_num	900391	Sequence number
obs_id	6335	Observation id
title	Massive Star Life, Death, and Rebirth in the Perseus Arm	Proposal
observer	Dr. Leisa Townsley	Principal investigator
object	W3 North	Source name
dtycycle	0	
cycle	P	events from which exps? Prim/Second/Both
ra_targ	36.711667	Observer's specified target RA [deg]
dec_targ	62.264444	Observer's specified target Dec [deg]
ra_nom	36.717323805521	Nominal RA [deg]
dec_nom	62.268312555547	Nominal Dec [deg]
roll_nom	78.624494224985	Nominal Roll [deg]
revision	3	Processing version of data
ontime	21267.137940377	Sum of GTIs [s]
livetime	20997.840634243	Livetime [s]
ontime0	21267.014820397	Sum of GTIs [s]
ontime1	21267.05586037	Sum of GTIs [s]
ontime2	21263.85593009	Sum of GTIs [s]
ontime3	21267.137940377	Sum of GTIs [s]
ontime6	21267.199920774	Sum of GTIs [s]
ontime7	21267.17898038	Sum of GTIs [s]
l2events	177547	Number of level 2 events



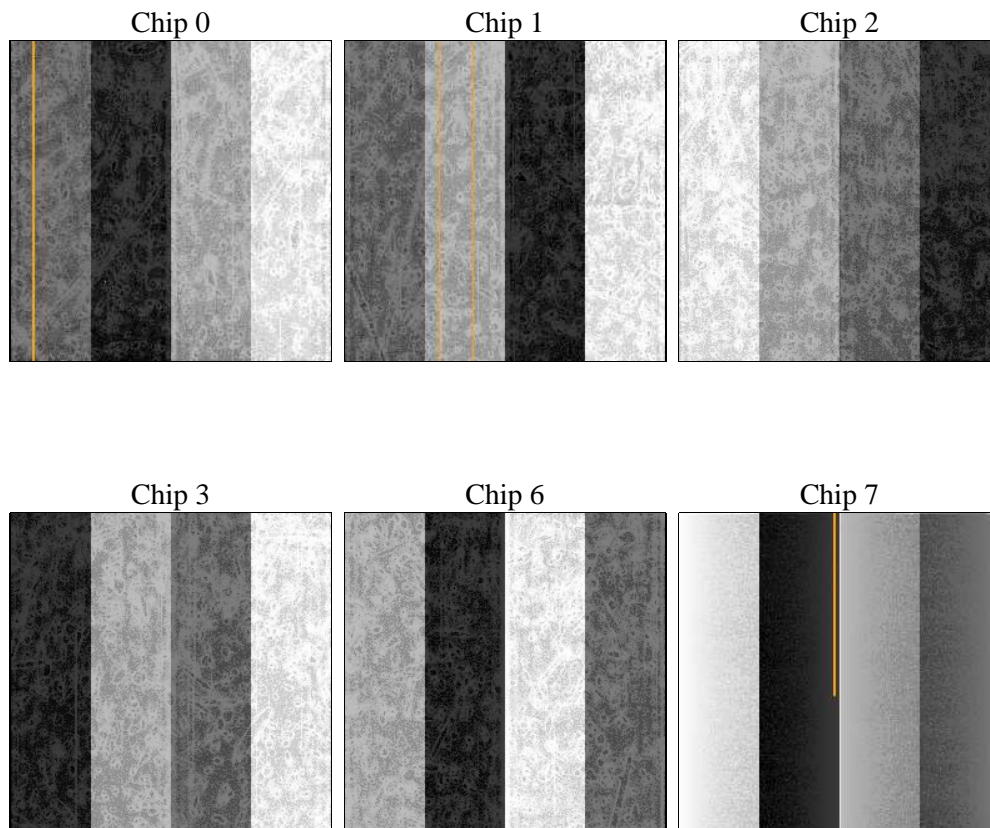
2 OBI

2.1 OBI

2.1.1 Images



2.1.2 Bias



2.1.3 Parameters

obi_num	0	Obi number	sched_exp_time	21307.345000	[s] Scheduled observation exposure time
ascdsver	8.5.1.1	Processing system revision	ontime	21267.137940377	Sum of GTIs [s]
caldbver	4.5.5	 	ontime0	21267.014820397	Sum of GTIs [s]
date	2012-12-25T21:27:48	Date and time of file creation	ontime1	21267.05586037	Sum of GTIs [s]
revision	3	Processing version of data	ontime2	21263.85593009	Sum of GTIs [s]
			ontime3	21267.137940377	Sum of GTIs [s]
			ontime6	21267.199920774	Sum of GTIs [s]
			ontime7	21267.17898038	Sum of GTIs [s]
			l1events	1020017	Number of level 1 events

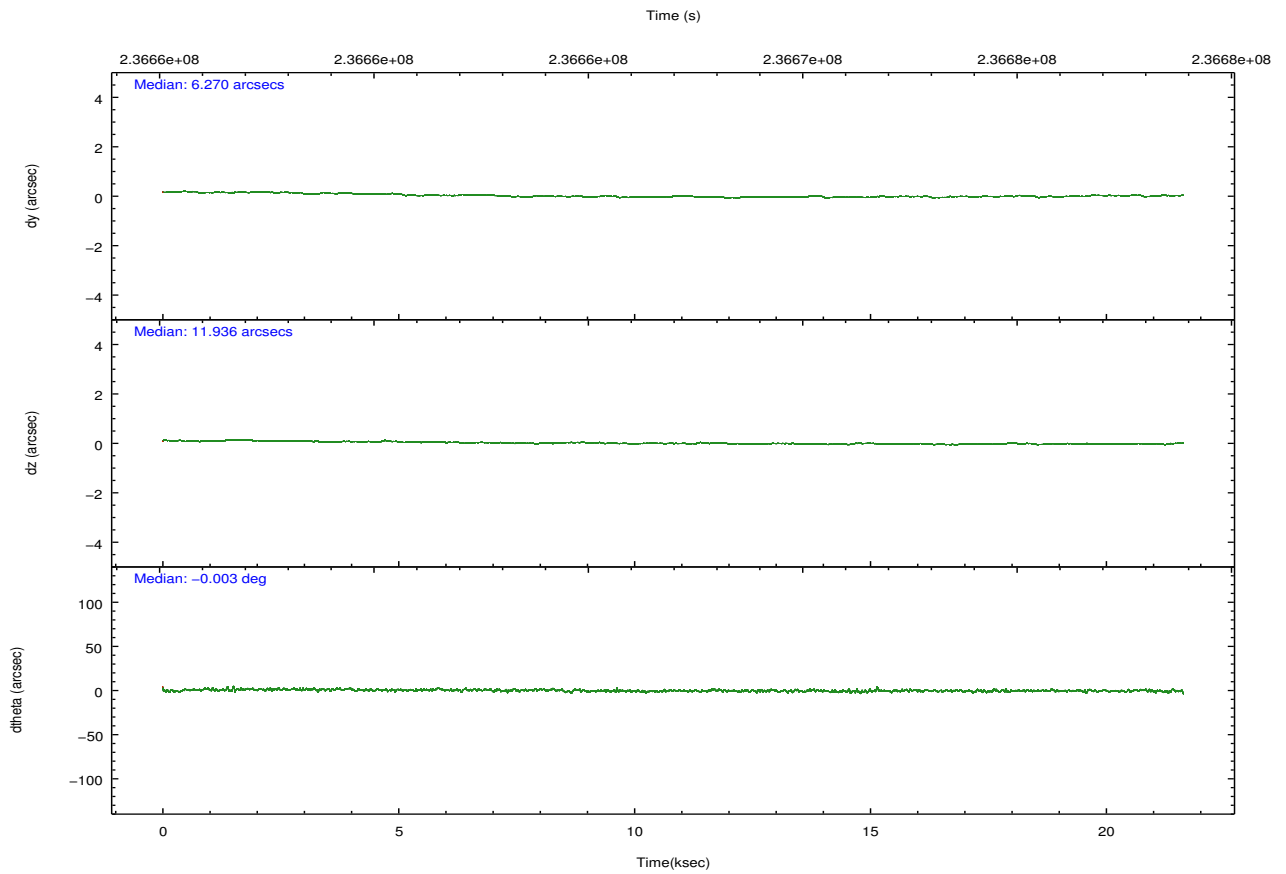
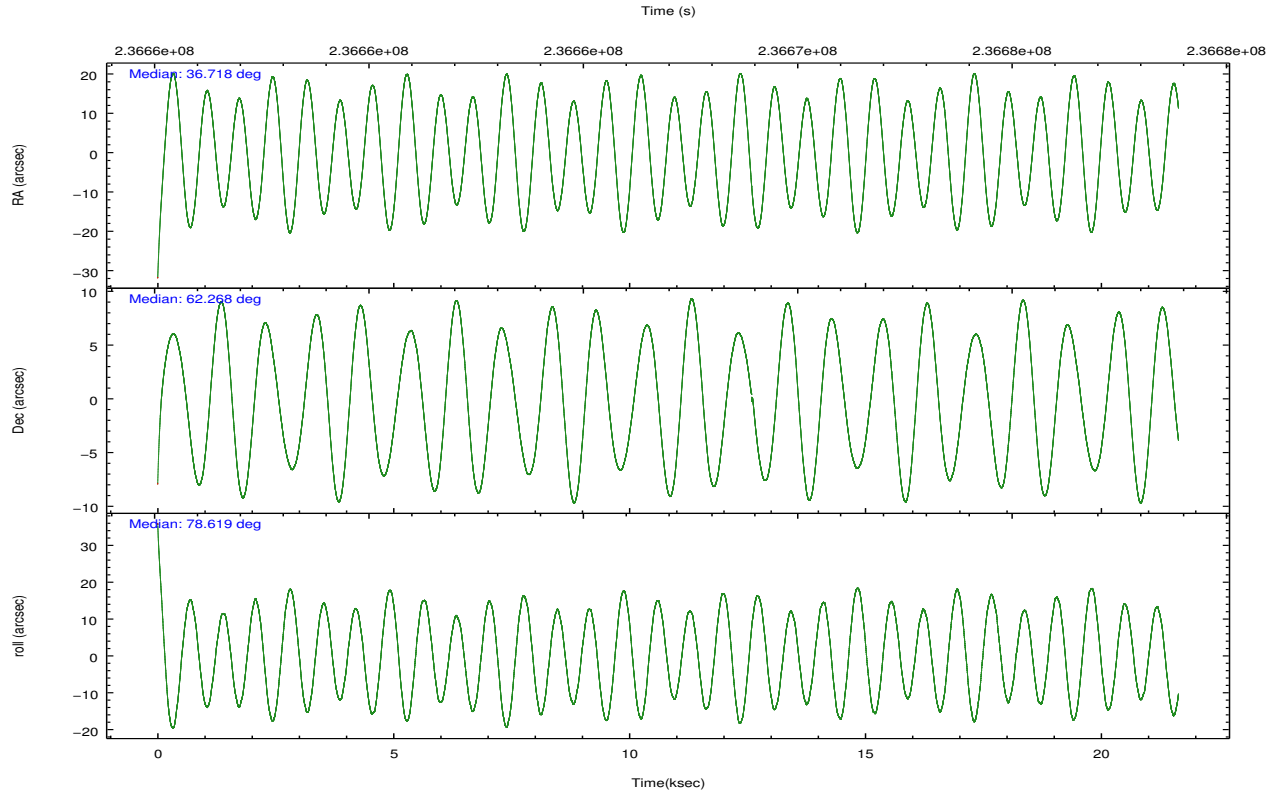
2.1.4 Events

	ccd 0	ccd 1	ccd 2	ccd 3	ccd 6	ccd 7		ccd 0	ccd 1	ccd 2	ccd 3	ccd 6	ccd 7
level 1 events	148641	150637	159152	162864	171980	226743	grade 0 events	8514	7941	8581	8705	7544	8539
rejected events	128480	130032	139748	143092	152399	132619		5%	5%	5%	5%	4%	3%
rejected %	86%	86%	87%	87%	88%	58%	grade 1 events	104	88	90	119	90	232
								0%	0%	0%	0%	0%	0%
							grade 2 events	4339	4673	3992	3825	4218	18802
								2%	3%	2%	2%	2%	8%
							grade 3 events	2005	1985	1838	1915	1920	8199
								1%	1%	1%	1%	1%	3%
							grade 4 events	1832	2034	1849	1934	1926	8376
								1%	1%	1%	1%	1%	3%
							grade 5 events	6649	7086	6319	7583	7940	21540
								4%	4%	3%	4%	4%	9%
							grade 6 events	3475	3972	3150	3395	3974	50223
								2%	2%	1%	2%	2%	22%
							grade 7 events	121723	122858	133333	135388	144368	110832
								81%	81%	83%	83%	83%	48%

2.2 Compared Parameters

Parameter	Planned	Actual	Parameter	Planned	Actual
Instrument	ACIS	ACIS	Obspar format version number	7	7
Detector	ACIS-012367	ACIS-012367	Obspar file type	PREDICTED	ACTUAL
Grating	NONE	NONE	Obspar update status	NONE	UPDATED
Data mode	VFAINT	VFAINT	Number of optional ACIS chips dropped	0	0
Observation mode	POINTING	POINTING	On-chip summing requested	N	N
[deg] Pointing RA	36.736295	36.71732380552137	Subarray requested	NONE	NONE
[deg] Pointing Dec	62.242350	62.26831255554676	Alternating exposures requested	N	N
[deg] Pointing Roll	78.399020	78.62449422498477	[s] Primary exposure time	0.000000	3.2
[mm] SIM focus pos	-0.782348	-0.7809083437167272			
[mm] SIM defocus	0	0.001439871863259334			
[mm] SIM translation stage pos	-233.592463	-233.5874344608287			
[mm] SIM translation stage offset	0	-0.005018542100998502			
[s] Observation start time (MET)	236656486.184000	236655454.80118			
Observation start date	2005-07-02T01:53:42	2005-07-02T01:37:34			
[s] Observation end time (MET)	236677793.184000	236678025.30221			
Observation end date	2005-07-02T07:48:49	2005-07-02T07:53:45			
Read mode	TIMED	TIMED			

2.3 Aspect

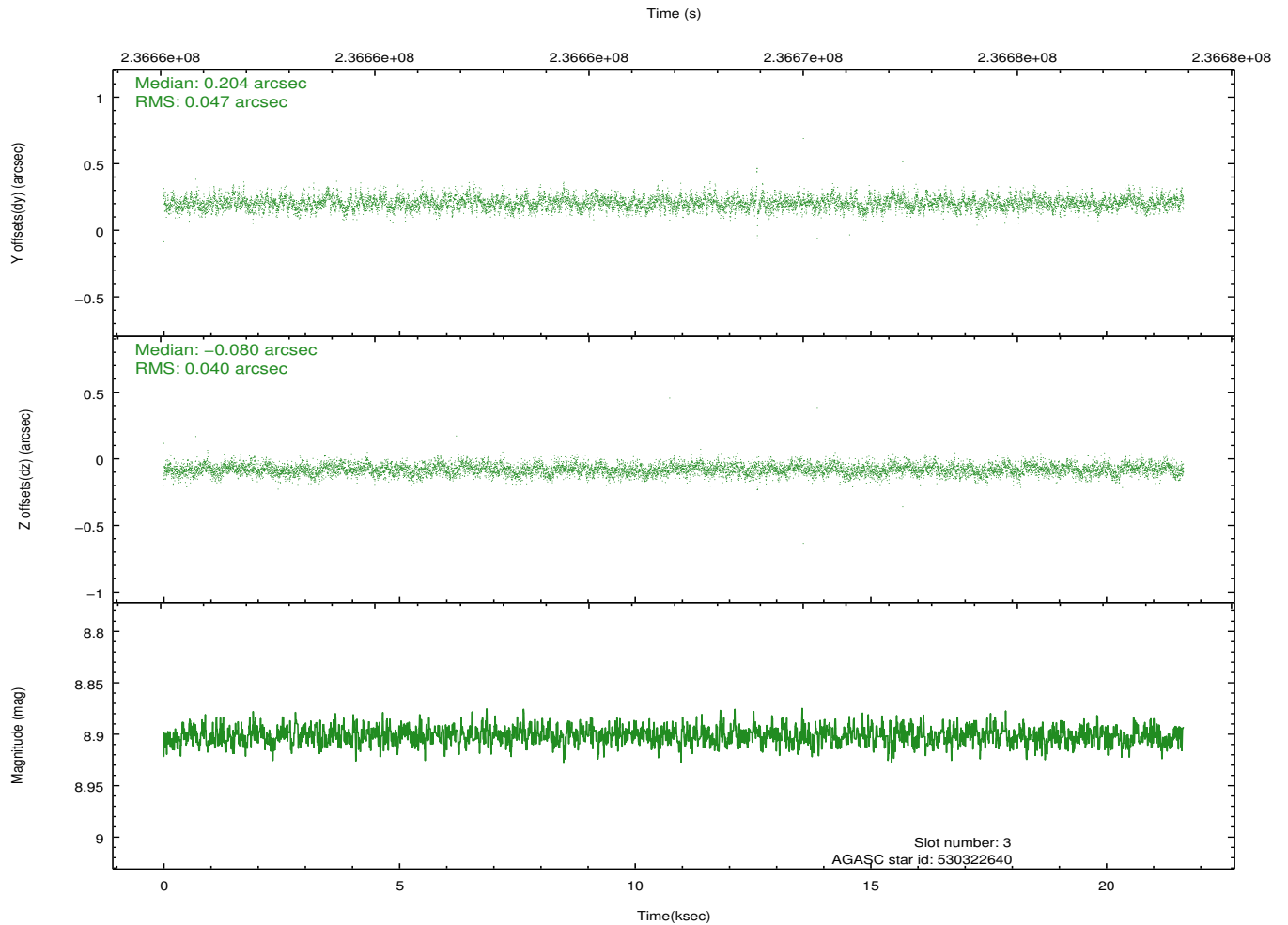
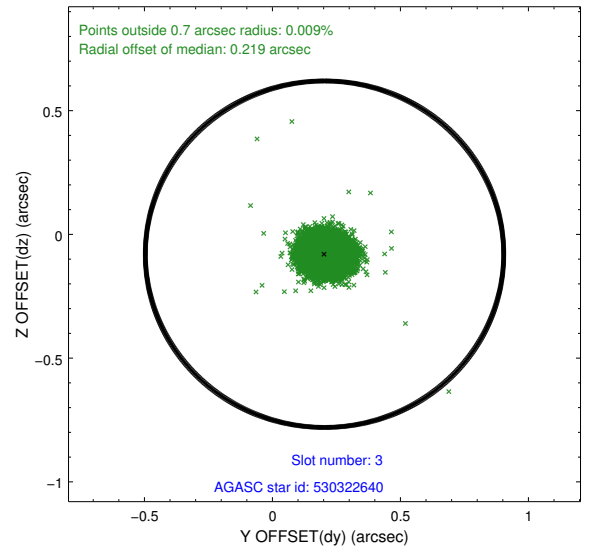
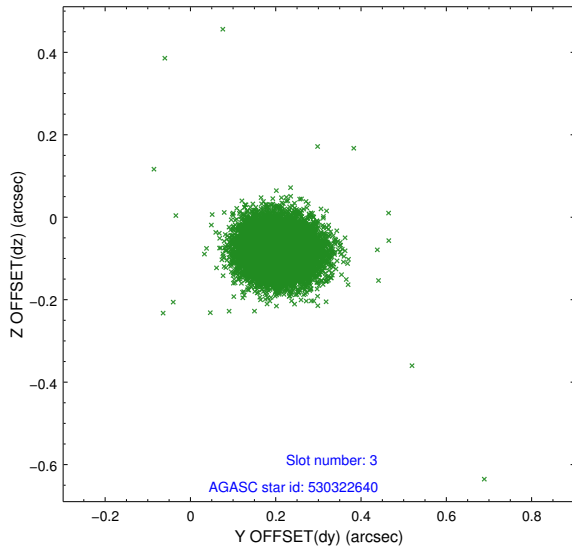


Slot Statistics

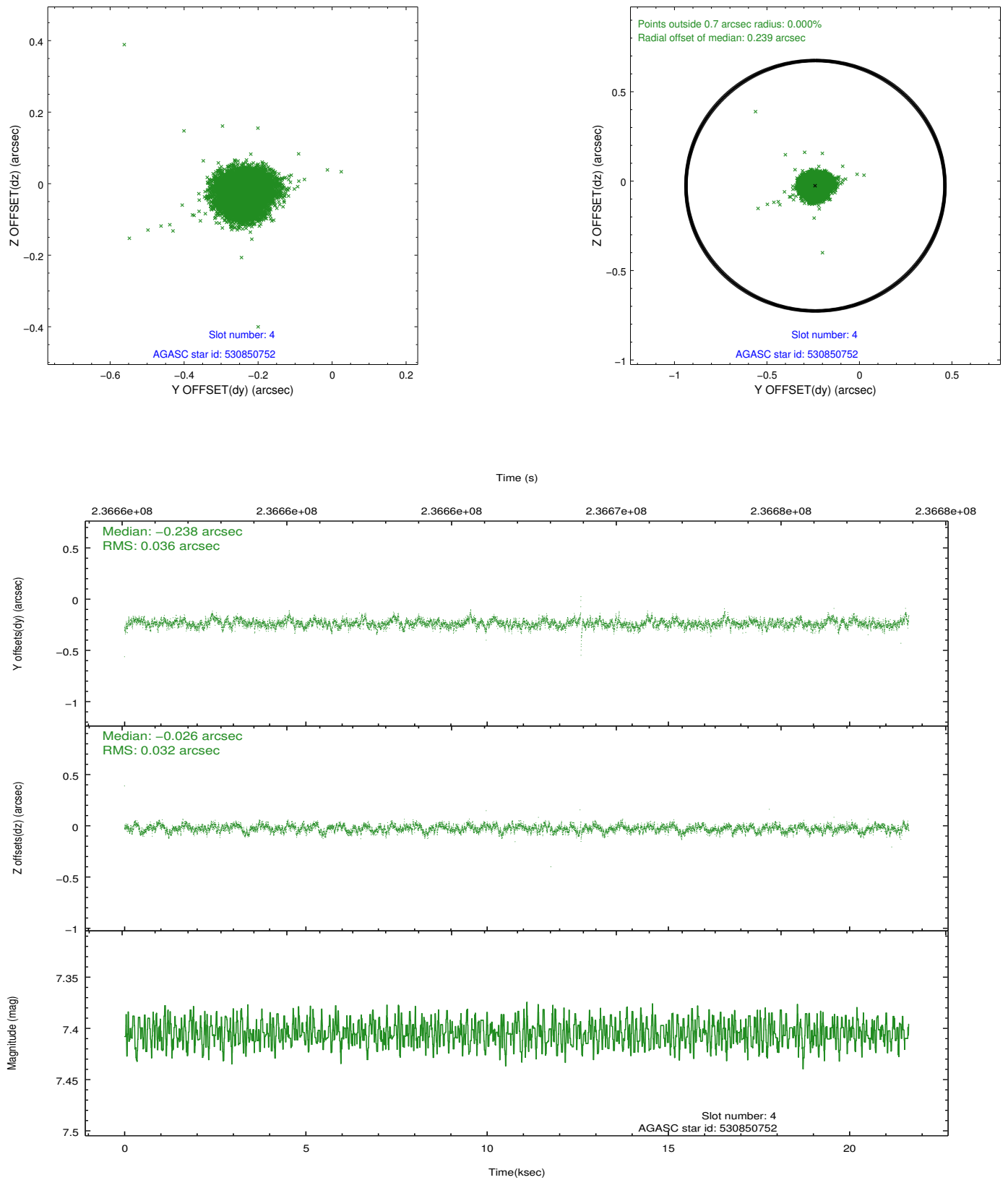
slot	status	id	mag	n_pts	med_dy	med_dz	dr1	dr2	ra	dec	mean_y	mean_z
0	FID	ACIS-I-1	7.24	5278	-0.046	-0.016	0.012	0.021	0.000000	0.000000	933.37	-835.47
1	FID	ACIS-I-2	7.14	5276	-0.123	-0.032	0.008	0.014	0.000000	0.000000	-760.70	-842.04
2	FID	ACIS-I-4	7.17	5277	0.071	0.115	0.009	0.016	0.000000	0.000000	2153.27	1064.40
3	GUIDE	530322640	8.90	10552	0.204	-0.080	0.064	0.104	35.878914	61.773652	-1936.89	1092.44
4	GUIDE	530850752	7.40	10556	-0.238	-0.026	0.050	0.082	36.960051	62.890600	2359.99	110.20
5	GUIDE	530862896	8.90	10550	0.002	-0.071	0.073	0.117	35.753276	62.216485	-410.68	1599.73
6	GUIDE	530863576	9.23	10545	-0.087	0.188	0.086	0.137	38.002549	62.242334	447.37	-2074.68
7	GUIDE	530327200	8.69	10551	0.117	-0.008	0.060	0.097	37.247178	61.519674	-2368.39	-1381.77

2.4 Star Slots

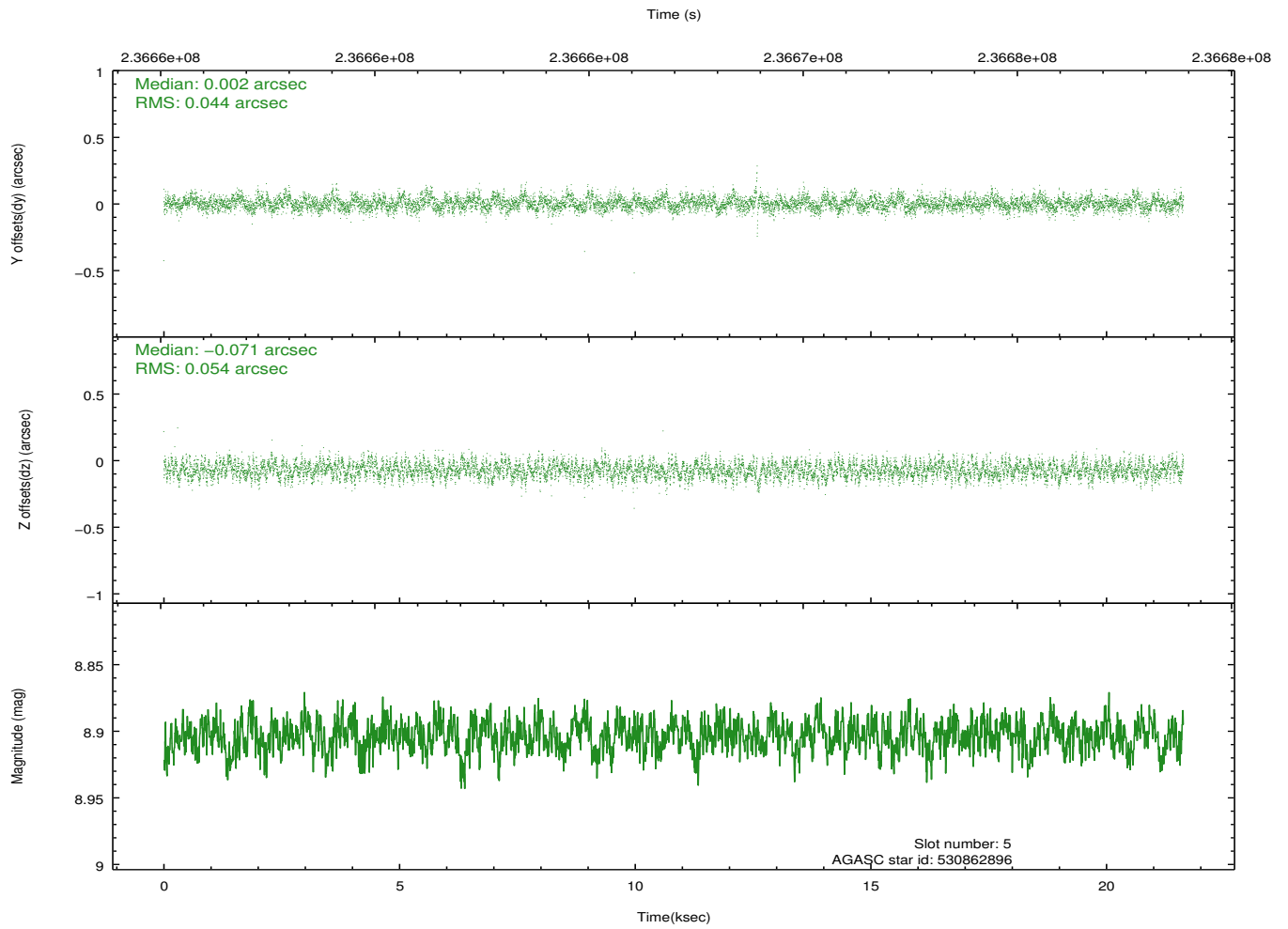
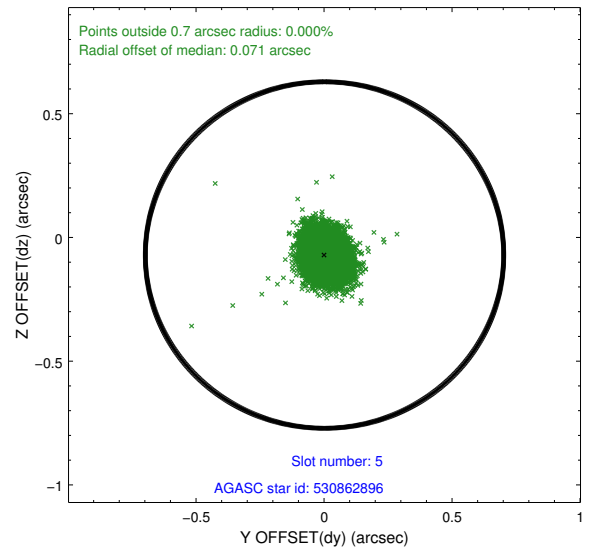
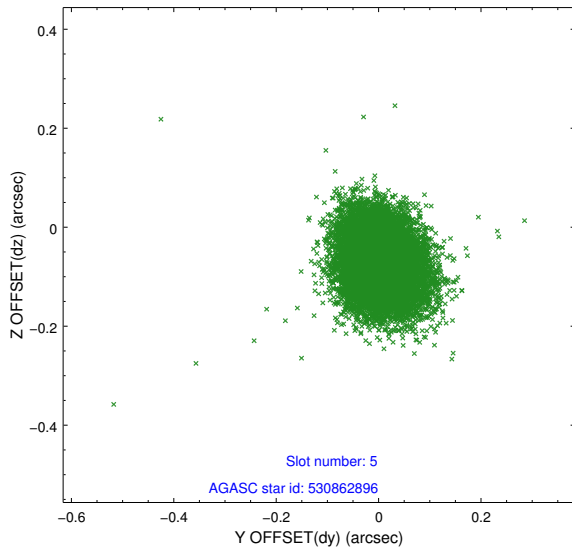
2.4.1 Slot 3



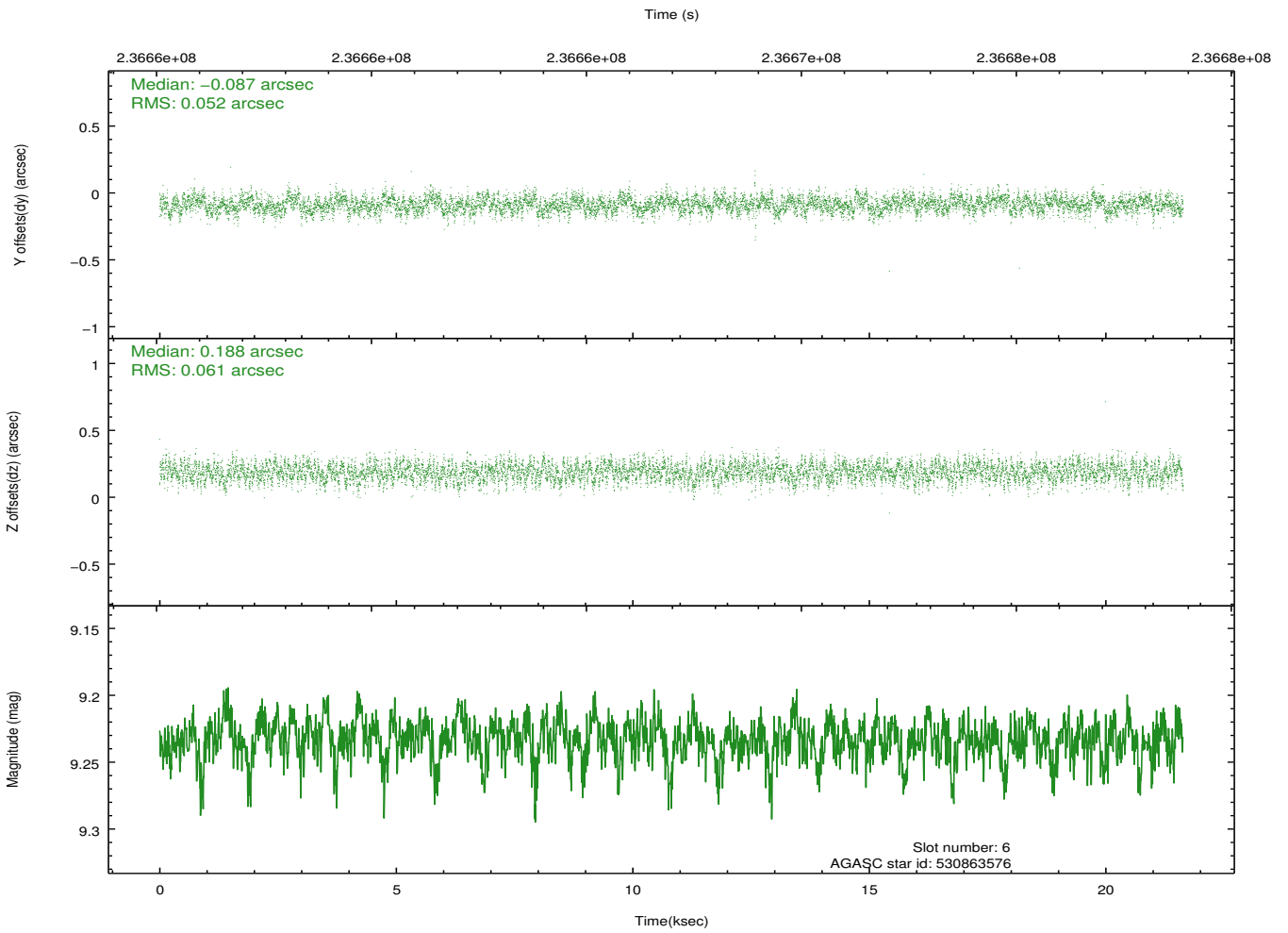
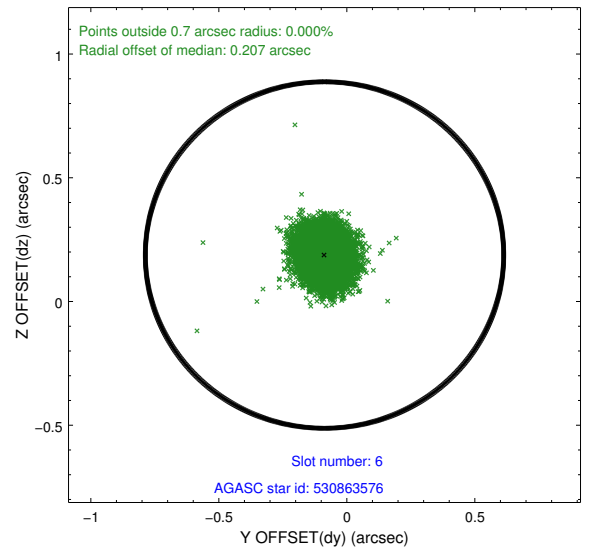
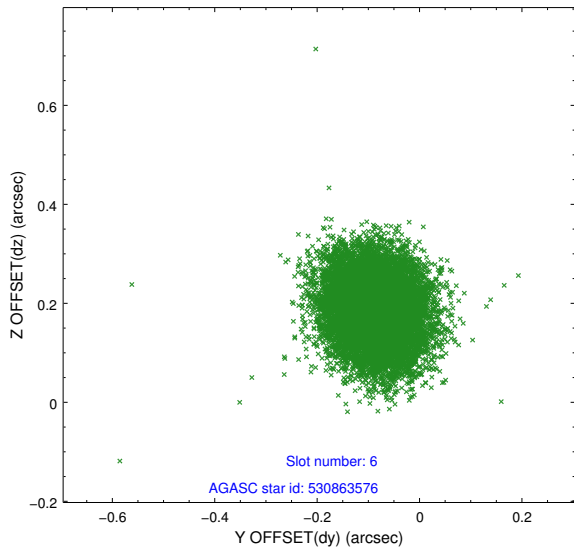
2.4.2 Slot 4



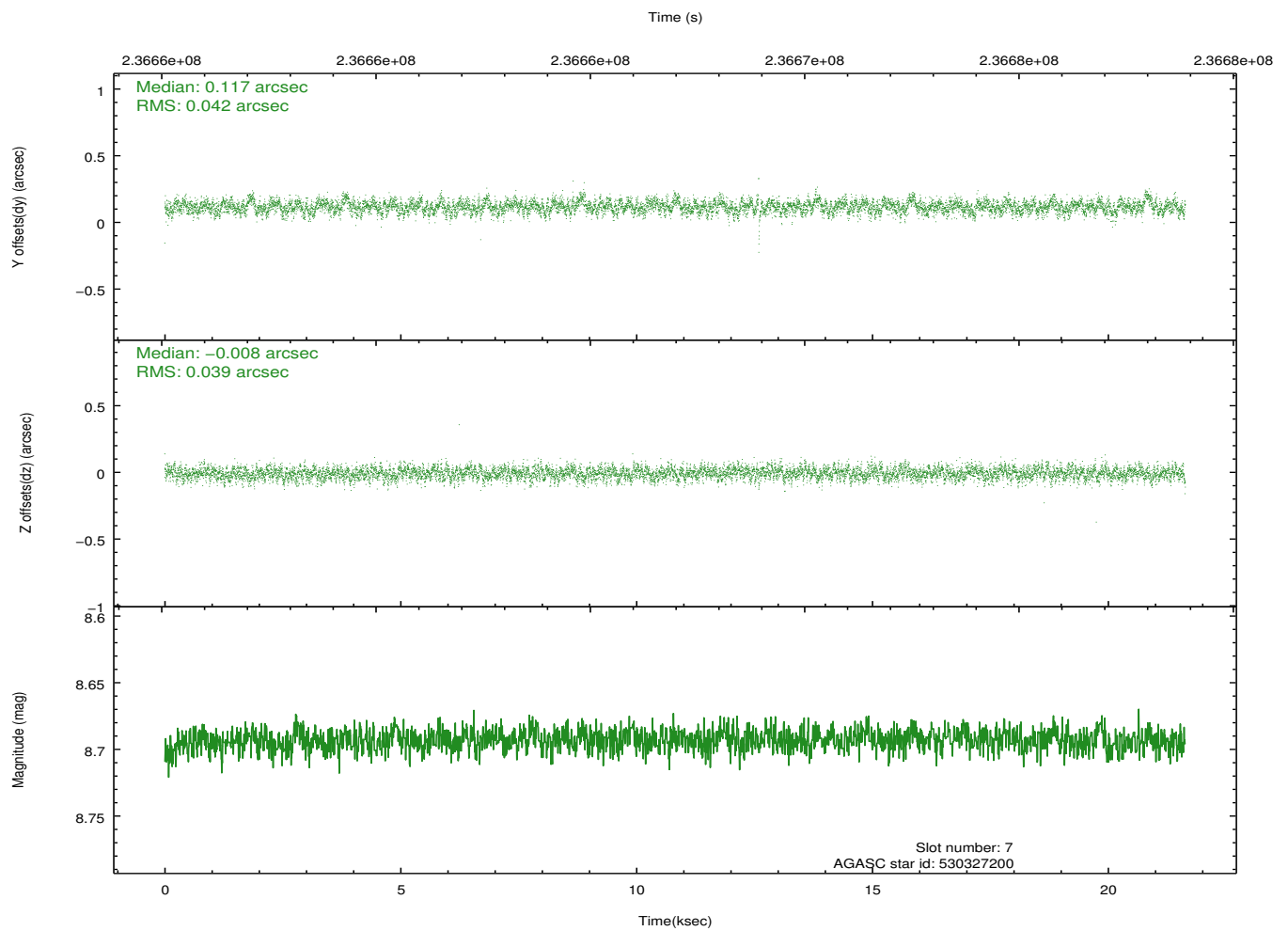
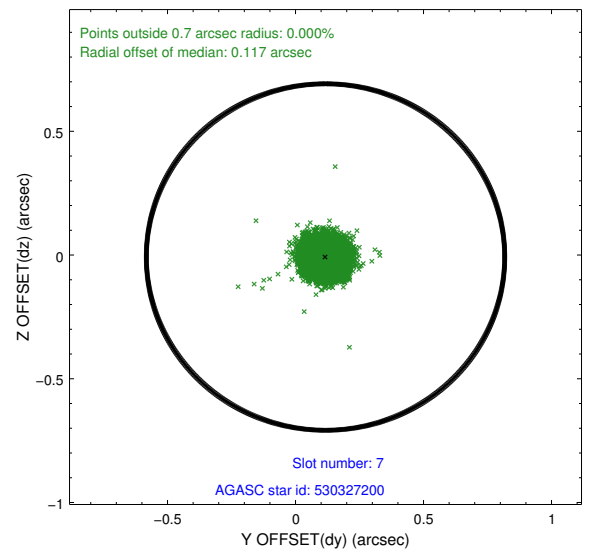
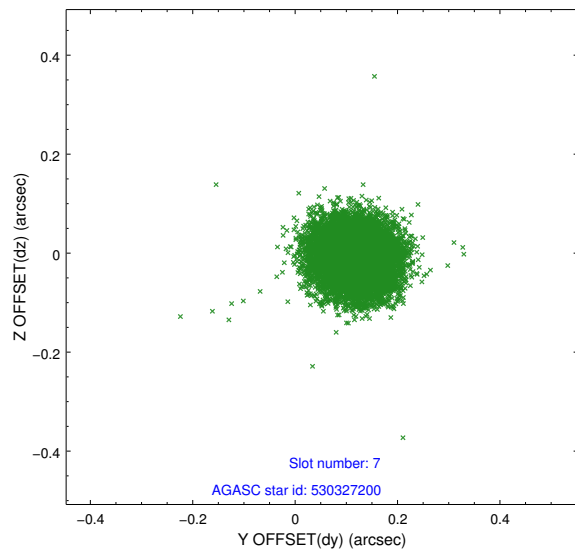
2.4.3 Slot 5



2.4.4 Slot 6

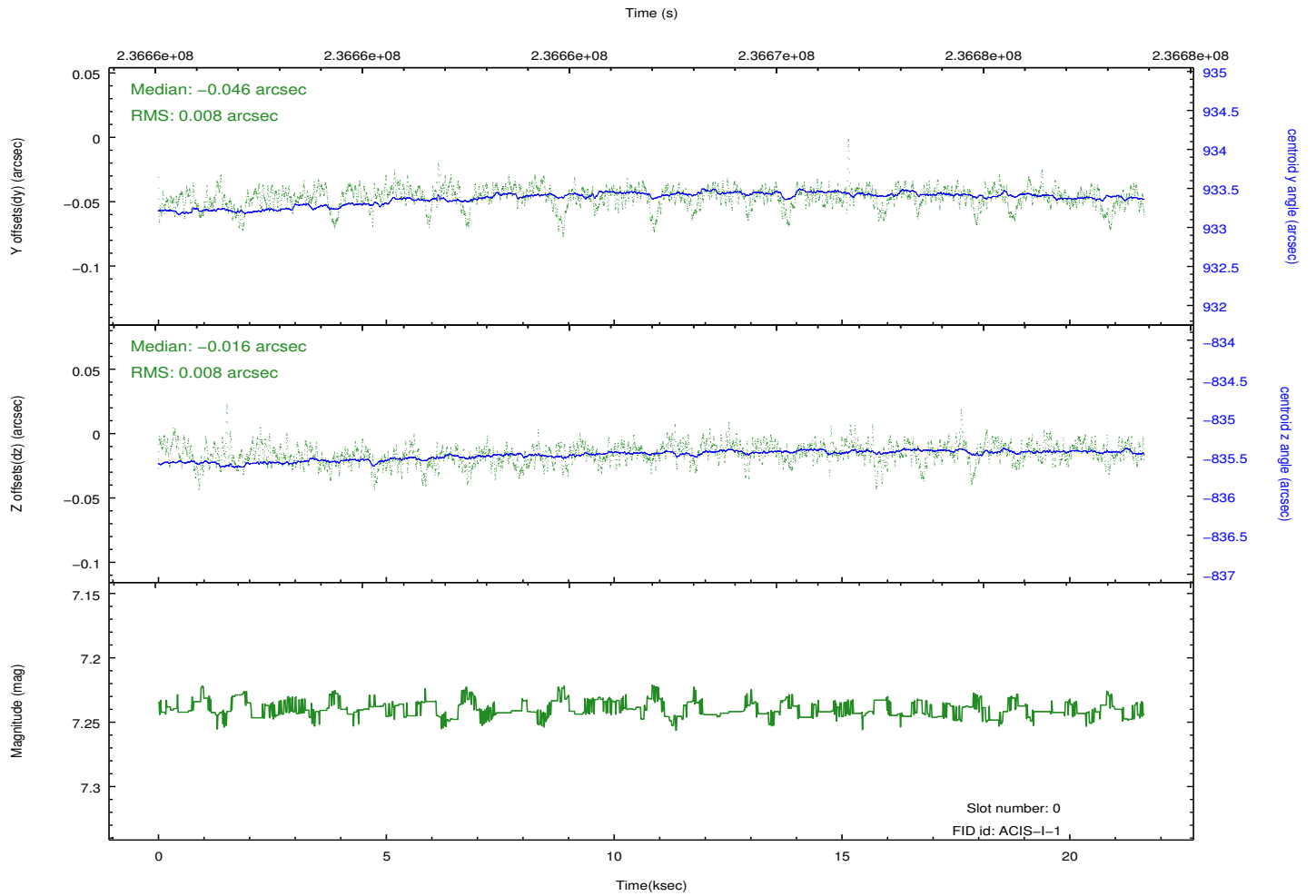
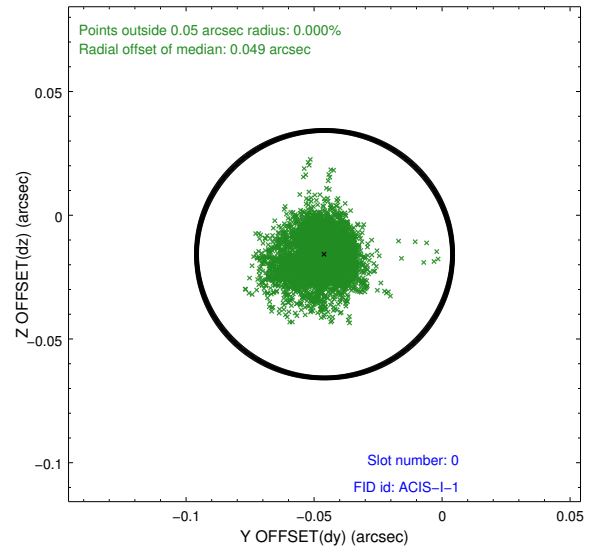
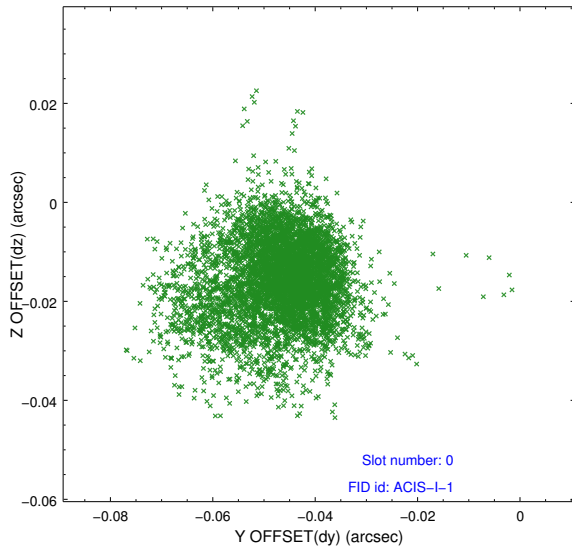


2.4.5 Slot 7

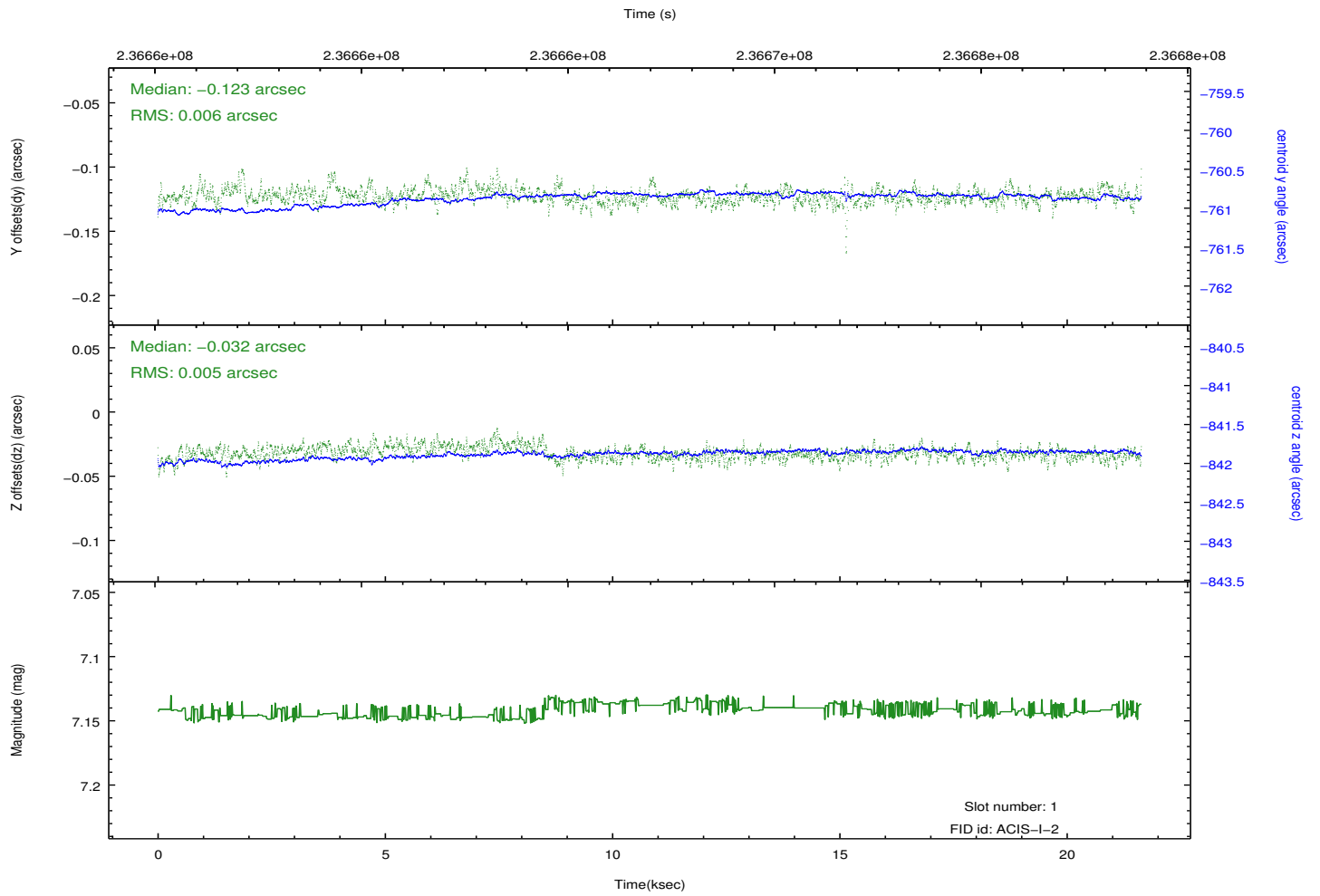
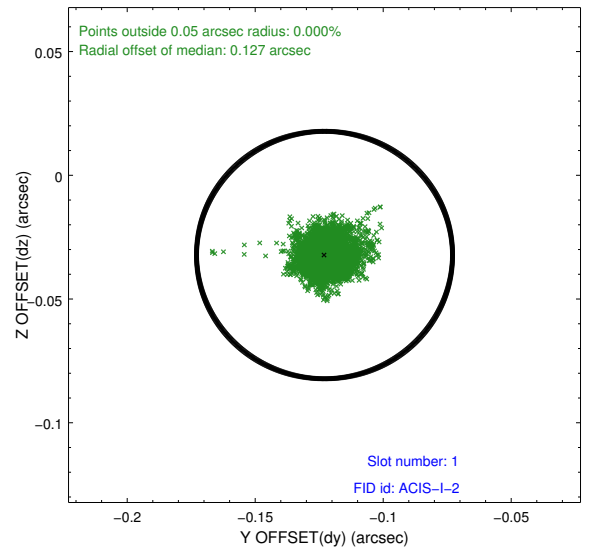
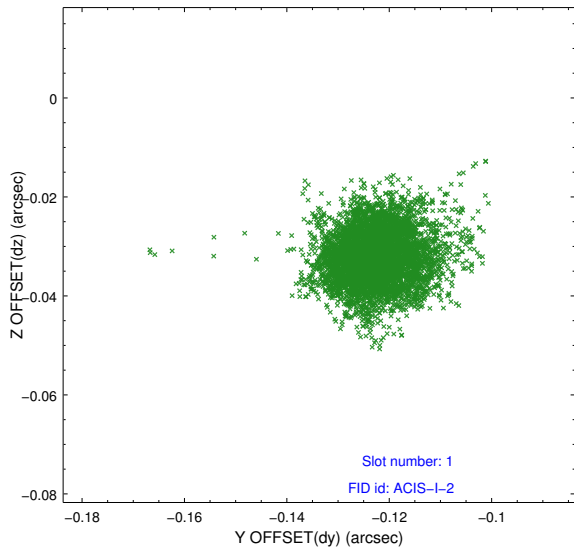


2.5 FID Slots

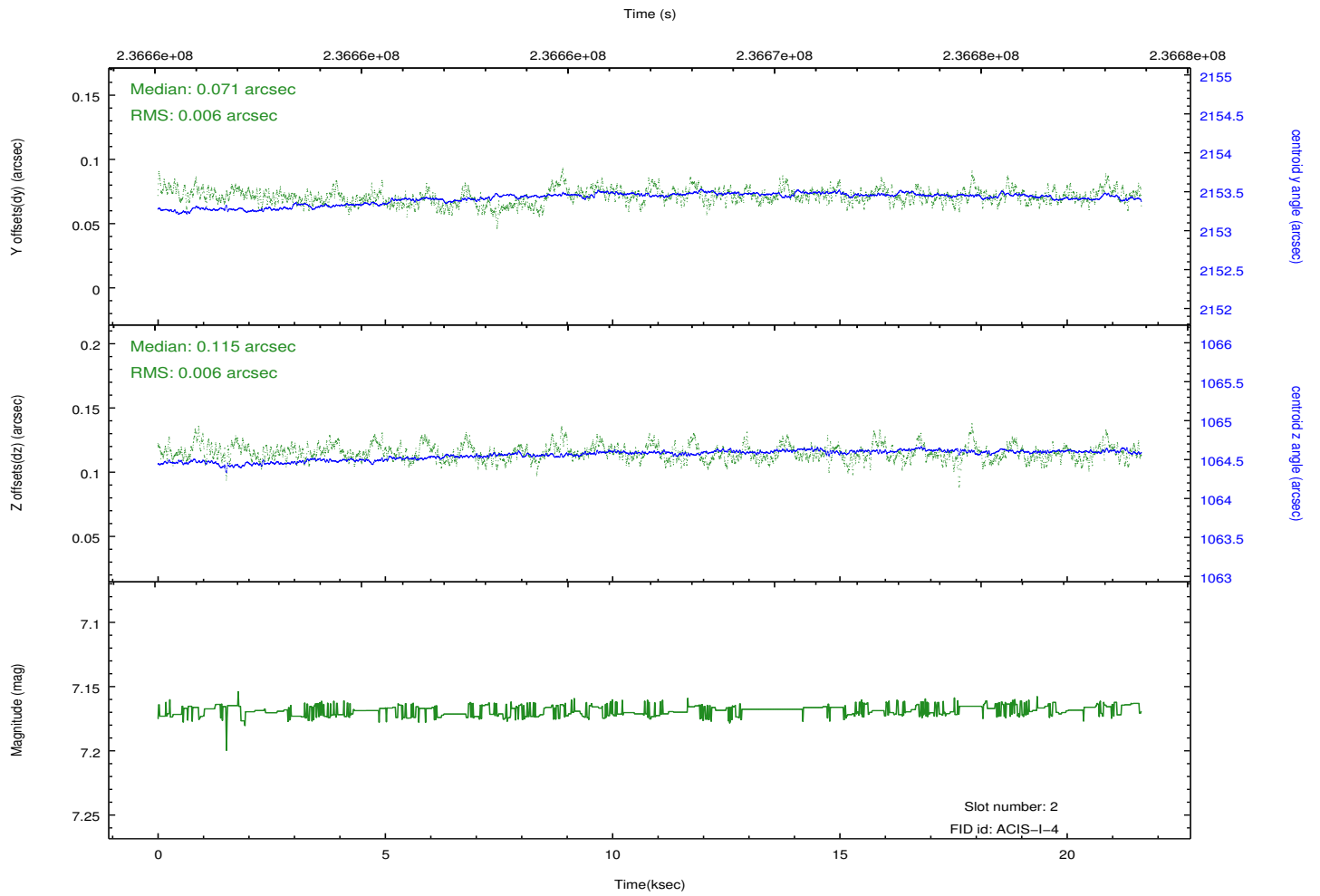
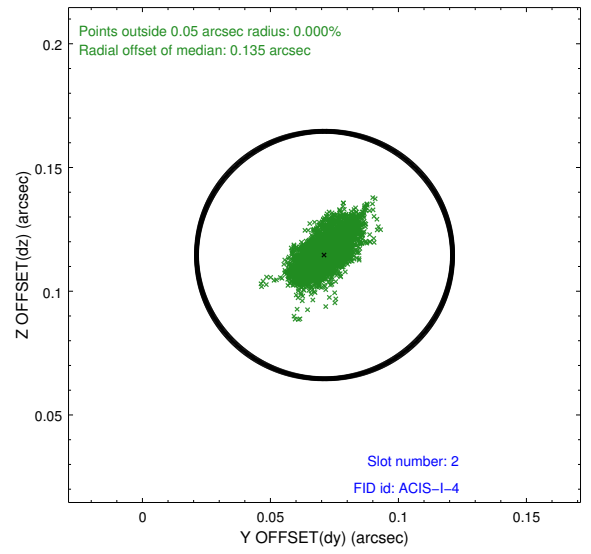
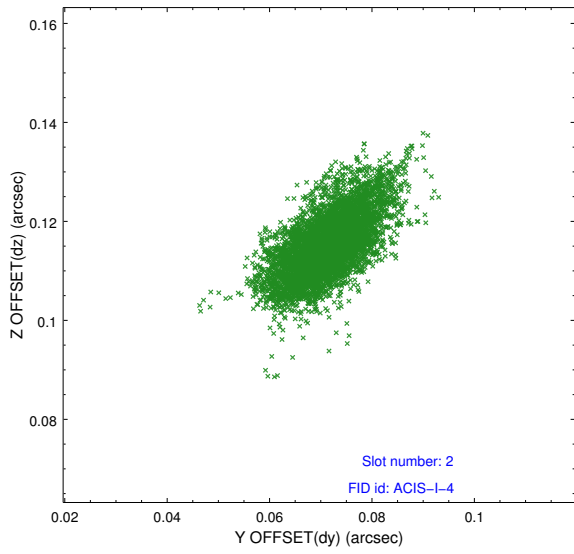
2.5.1 Slot 0



2.5.2 Slot 1



2.5.3 Slot 2



A Summary

A.1 Status

V&V Scientist	Beth Sundheim
V&V Date (YYYY-MM-DD)	2013.01.18
V&V Edition	1
V&V Disposition and Status	OK
V&V Charge Time	21.26719

A.2 Comments

Joint proposal with XMM.