

V&V Reference Report

L2 ASCDS Version : 8.5.1.1

Observation 6995 - L2 Version 3
Chandra X-Ray Center

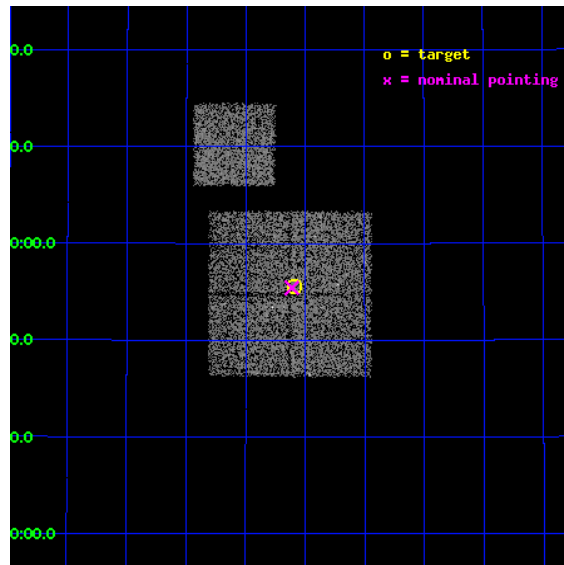
L2 Processing Date : Dec 31 2012

Contents

1	Front	2
2	OBI	3
2.1	OBI	3
2.1.1	Images	3
2.1.2	Bias	3
2.1.3	Parameters	4
2.1.4	Events	4
2.2	Compared Parameters	5
2.3	Aspect	6
2.4	Star Slots	9
2.4.1	Slot 3	9
2.4.2	Slot 4	10
2.4.3	Slot 5	11
2.4.4	Slot 6	12
2.4.5	Slot 7	13
2.5	FID Slots	14
2.5.1	Slot 0	14
2.5.2	Slot 1	15
2.5.3	Slot 2	16
A	Summary	17
A.1	Status	17
A.2	Comments	17

1 Front

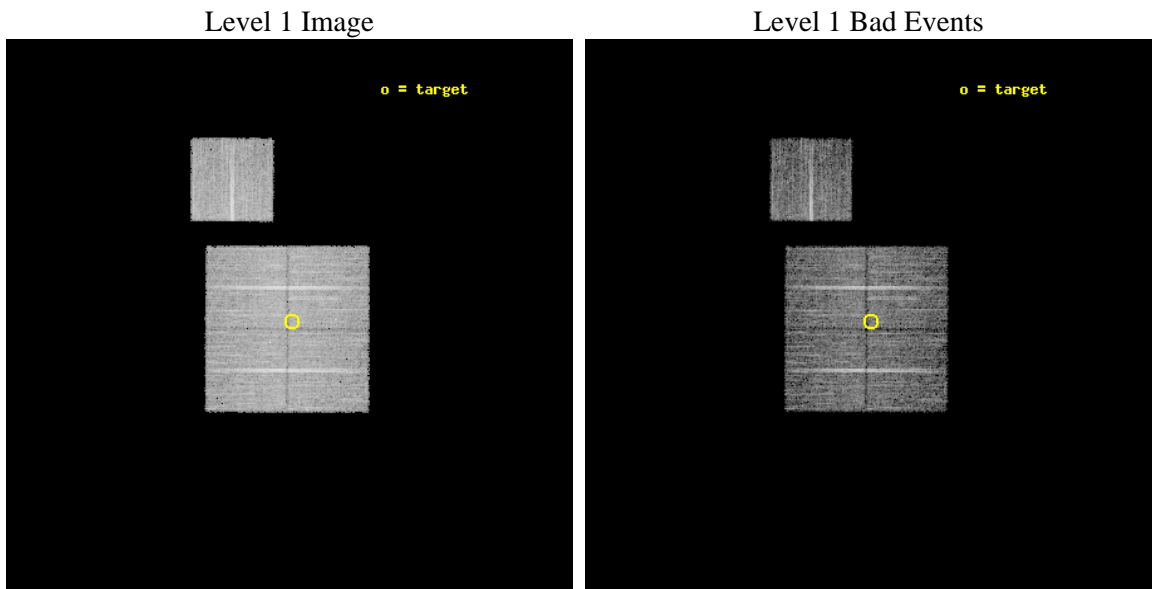
seq_num	900411	Sequence number
obs_id	6995	Observation id
title	Chandra Large Scale Survey of the NOAO Bootes Deep Field (A)	Propo
observer	Dr. Stephen Murray	Principal investigator
object	Bootes2 17	Source name
dtcycle	0	
cycle	P	events from which exps? Prim/Second/Both
ra_targ	216.52275	Observer's specified target RA [deg]
dec_targ	33.925417	Observer's specified target Dec [deg]
ra_nom	216.52784957515	Nominal RA [deg]
dec_nom	33.923628950505	Nominal Dec [deg]
roll_nom	0.20582287187882	Nominal Roll [deg]
revision	3	Processing version of data
ontime	10049.906199694	Sum of GTIs [s]
livetime	9918.5967765614	Livetime [s]
ontime0	10046.642089516	Sum of GTIs [s]
ontime1	10049.824119687	Sum of GTIs [s]
ontime2	10043.583209246	Sum of GTIs [s]
ontime3	10049.906199694	Sum of GTIs [s]
ontime6	10046.60106945	Sum of GTIs [s]
l2events	25698	Number of level 2 events



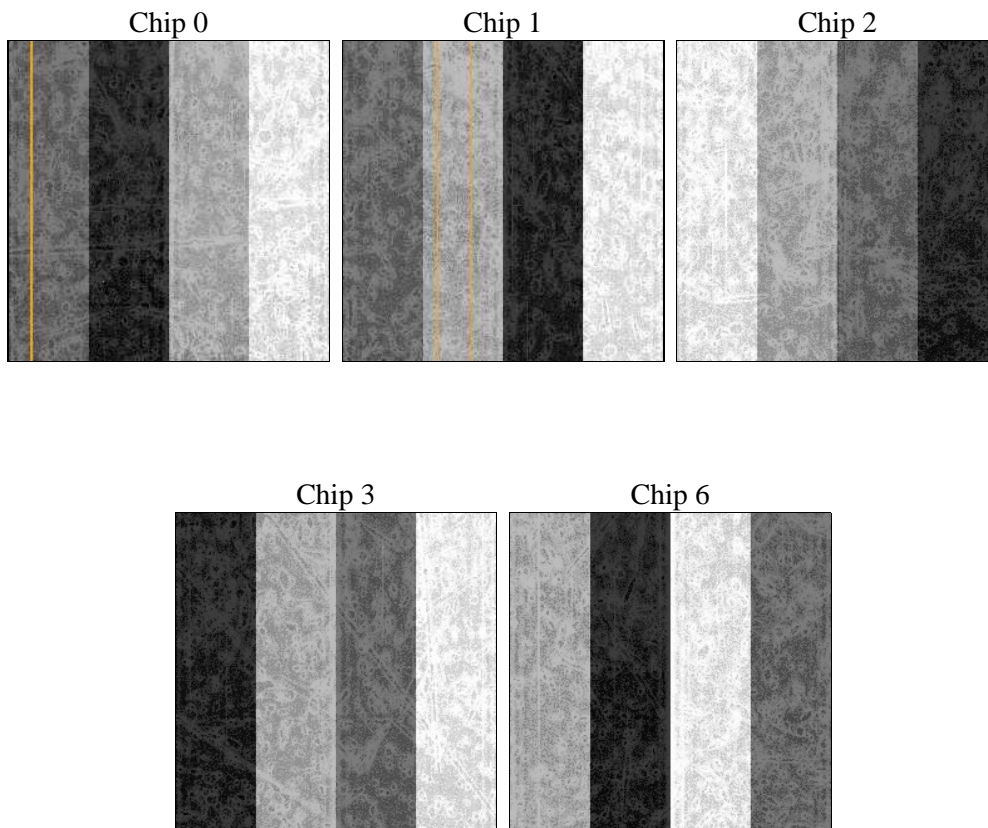
2 OBI

2.1 OBI

2.1.1 Images



2.1.2 Bias



2.1.3 Parameters

obi_num	0	Obi number	sched_exp_time	10000.000000	[s] Scheduled observation exposure time
ascdsver	8.5.1.1	Processing system revision	ontime	10049.906199694	Sum of GTIs [s]
caldbver	4.5.5	 	ontime0	10046.642089516	Sum of GTIs [s]
date	2012-12-31T09:40:20	Date and time of file creation	ontime1	10049.824119687	Sum of GTIs [s]
revision	3	Processing version of data	ontime2	10043.583209246	Sum of GTIs [s]
			ontime3	10049.906199694	Sum of GTIs [s]
			ontime6	10046.60106945	Sum of GTIs [s]
			l1events	304699	Number of level 1 events

2.1.4 Events

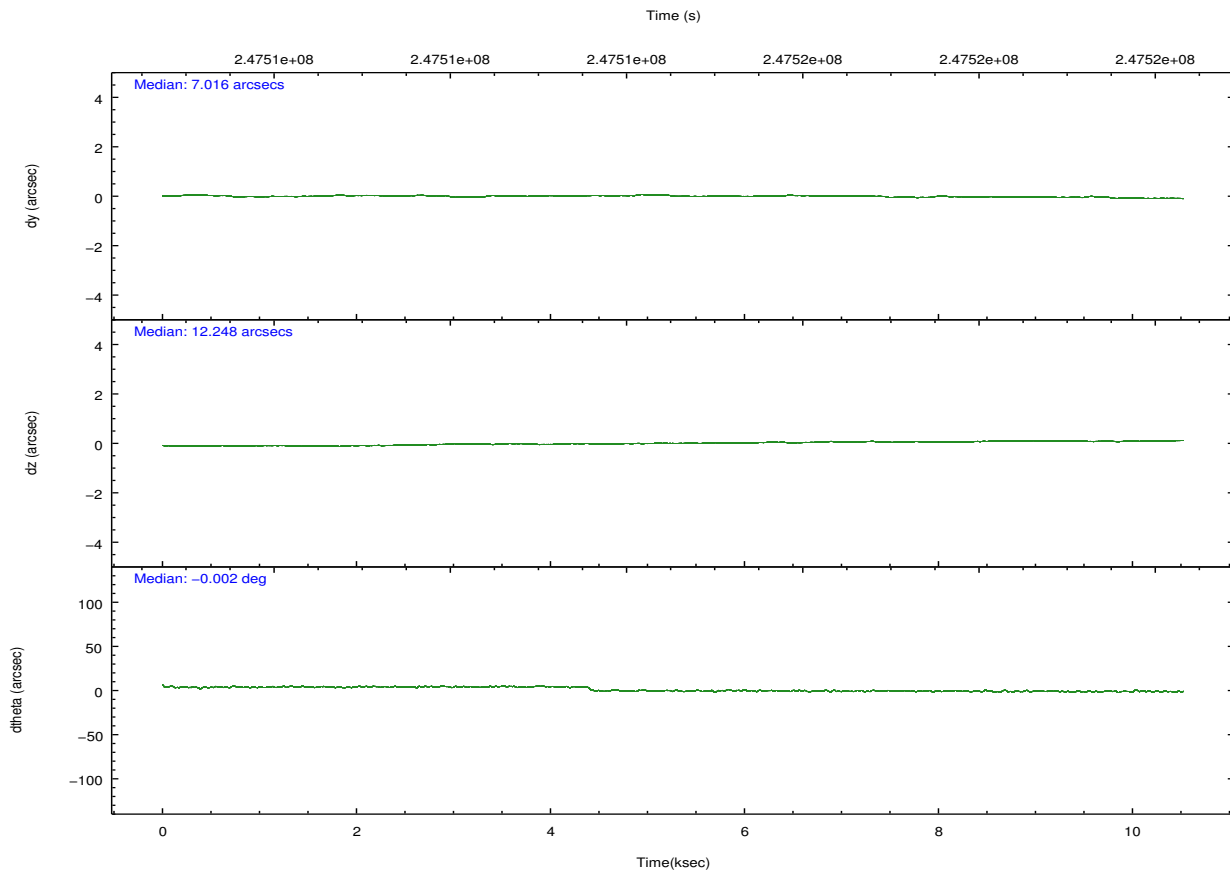
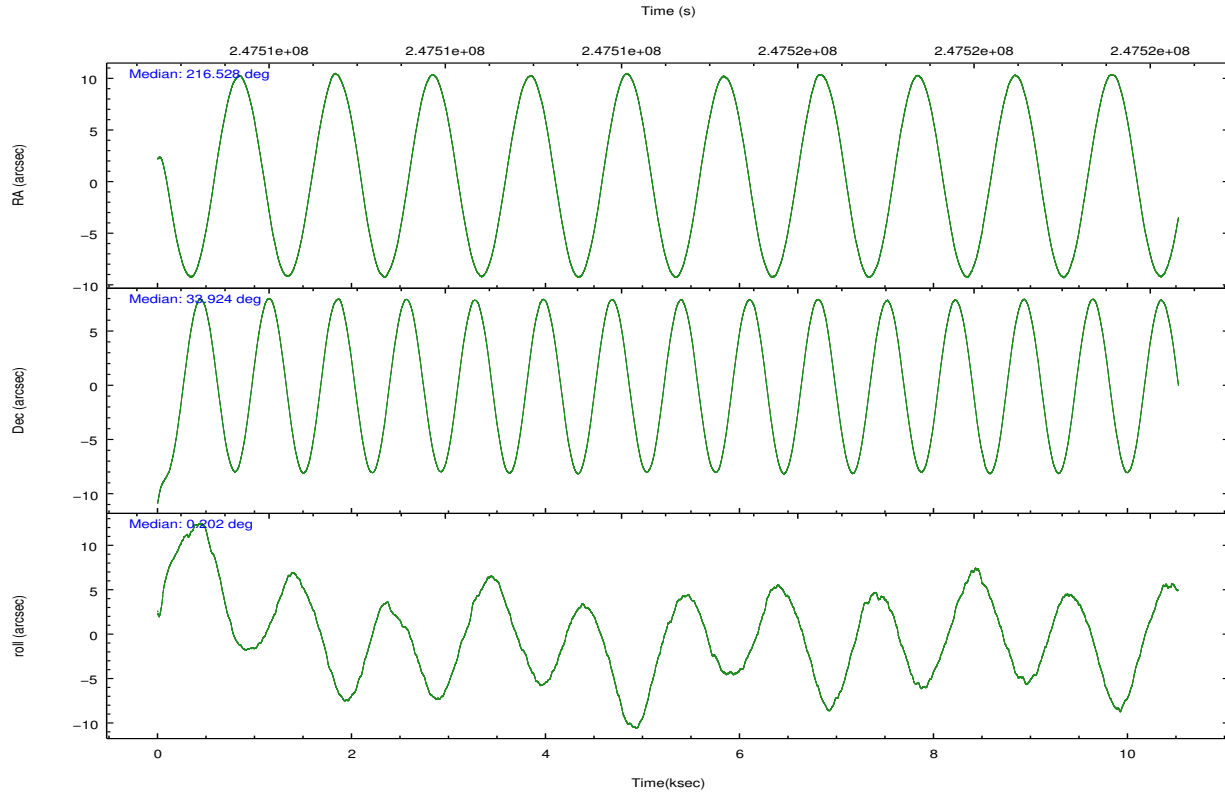
	ccd 0	ccd 1	ccd 2	ccd 3	ccd 6
level 1 events	60386	56670	65205	61888	60550
rejected events	53898	50226	59283	55938	54004
rejected %	89%	88%	90%	90%	89%

	ccd 0	ccd 1	ccd 2	ccd 3	ccd 6
grade 0 events	2414	2176	2236	2287	2455
	3%	3%	3%	3%	4%
grade 1 events	23	28	28	36	28
	0%	0%	0%	0%	0%
grade 2 events	1562	1414	1390	1233	1391
	2%	2%	2%	1%	2%
grade 3 events	705	776	609	657	736
	1%	1%	0%	1%	1%
grade 4 events	686	762	648	655	722
	1%	1%	0%	1%	1%
grade 5 events	1846	2104	1618	2156	2104
	3%	3%	2%	3%	3%
grade 6 events	1122	1317	1039	1119	1244
	1%	2%	1%	1%	2%
grade 7 events	52028	48093	57637	53745	51870
	86%	84%	88%	86%	85%

2.2 Compared Parameters

Parameter	Planned	Actual	Parameter	Planned	Actual
Instrument	ACIS	ACIS	Obspar format version number	7	7
Detector	ACIS-01236	ACIS-01236	Obspar file type	PREDICTED	ACTUAL
Grating	NONE	NONE	Obspar update status	NONE	UPDATED
Data mode	VFAINT	VFAINT	Number of optional ACIS chips dropped	0	0
Observation mode	POINTING	POINTING	On-chip summing requested	N	N
[deg] Pointing RA	216.499449	216.5278495751467	Subarray requested	NONE	NONE
[deg] Pointing Dec	33.909743	33.92362895050524	Alternating exposures requested	N	N
[deg] Pointing Roll	0.012994	0.2058228718788171	[s] Primary exposure time	0.000000	3.1
[mm] SIM focus pos	-0.782348	-0.7809083437167272			
[mm] SIM defocus	0	0.001439871863259334			
[mm] SIM translation stage pos	-233.592463	-233.5874344608287			
[mm] SIM translation stage offset	0	-0.005018542100998502			
[s] Observation start time (MET)	247509790.184000	247508693.93703			
Observation start date	2005-11-04T16:42:06	2005-11-04T16:24:53			
[s] Observation end time (MET)	247519790.184000	247519924.35005			
Observation end date	2005-11-04T19:28:46	2005-11-04T19:32:04			
Read mode	TIMED	TIMED			

2.3 Aspect

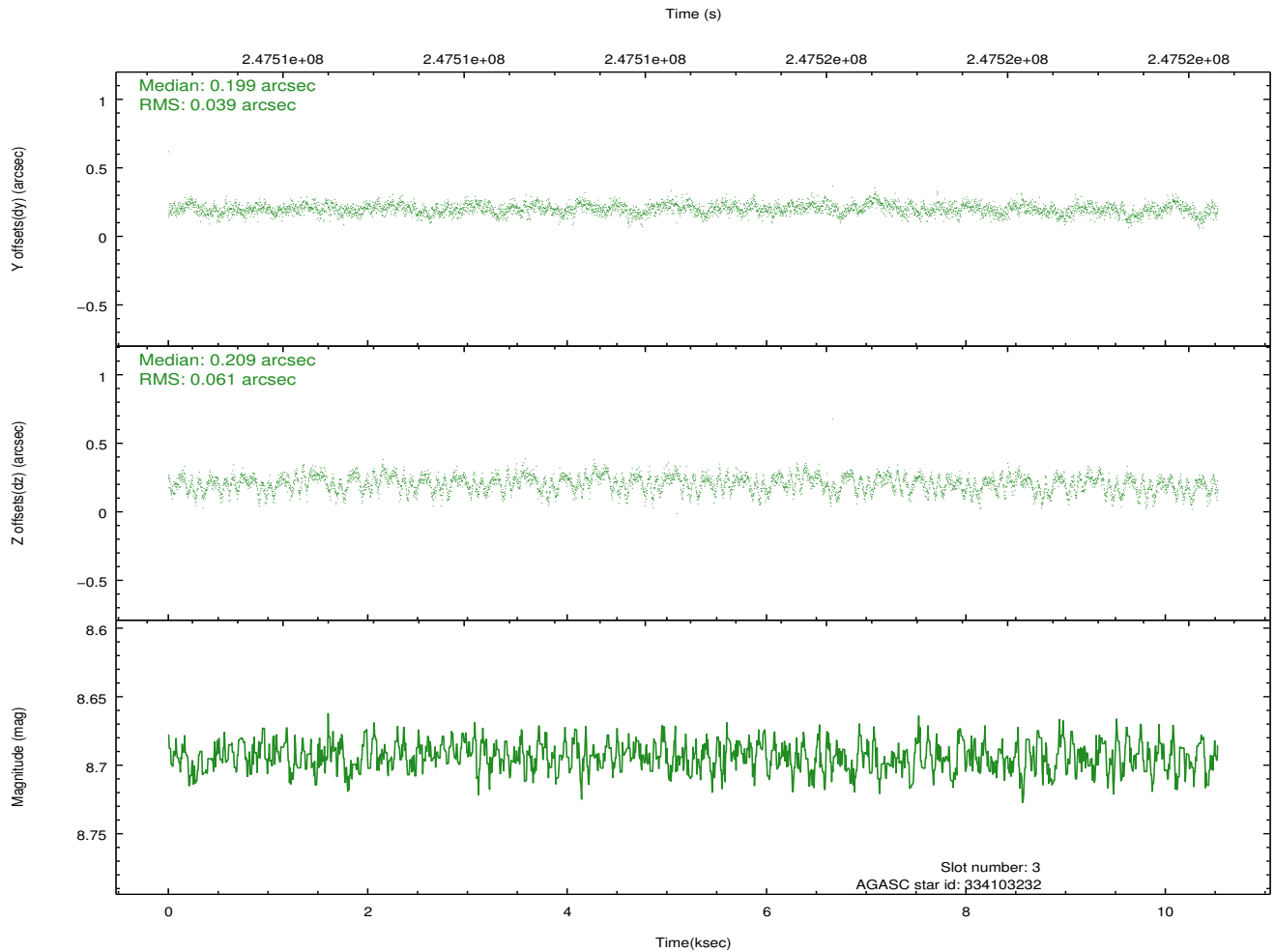
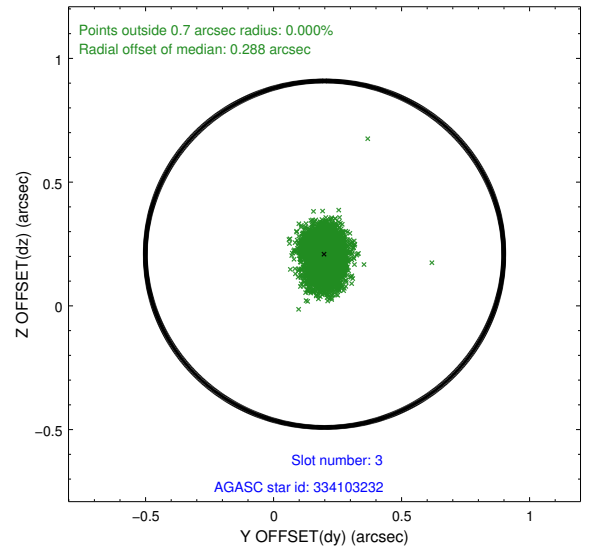
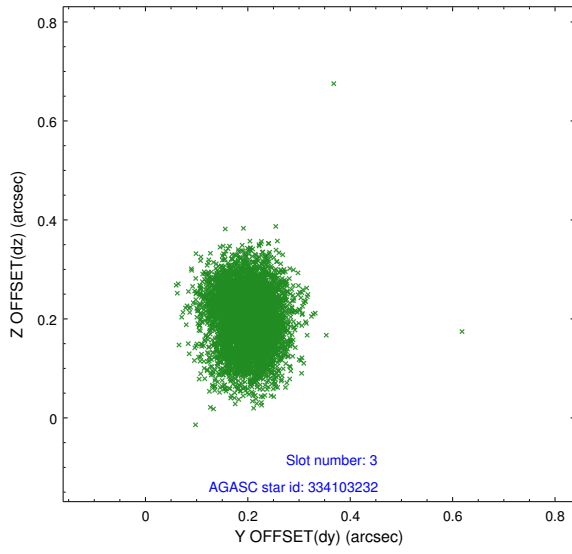


Slot Statistics

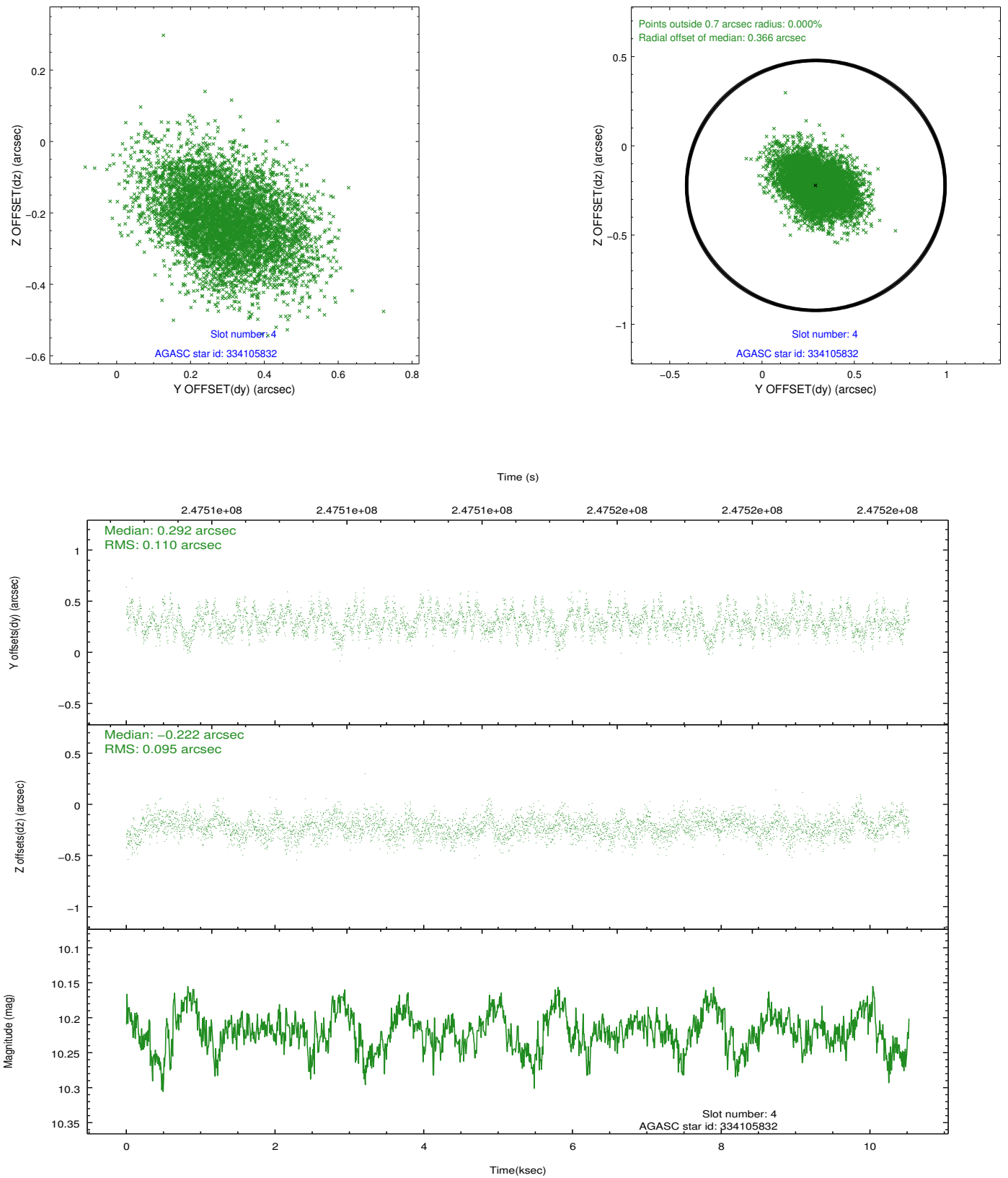
slot	status	id	mag	n_pts	med_dy	med_dz	dr1	dr2	ra	dec	mean_y	mean_z
0	FID	ACIS-I-1	7.24	2567	-0.015	-0.057	0.042	0.054	0.000000	0.000000	932.64	-835.84
1	FID	ACIS-I-4	7.18	2565	0.107	0.072	0.034	0.042	0.000000	0.000000	2153.11	1063.81
2	FID	ACIS-I-5	7.22	2567	-0.193	0.055	0.014	0.020	0.000000	0.000000	-1814.86	1062.28
3	GUIDE	334103232	8.69	5132	0.199	0.209	0.076	0.125	215.850271	33.571936	-1946.77	-1209.27
4	GUIDE	334105832	10.22	5127	0.292	-0.222	0.153	0.254	215.847735	34.556918	-1931.59	2336.14
5	GUIDE	335021128	9.37	5133	-0.076	-0.211	0.104	0.164	216.159551	34.422539	-1009.10	1848.39
6	GUIDE	335028240	9.16	5135	-0.037	0.198	0.081	0.134	216.746851	33.385009	743.28	-1887.31
7	GUIDE	335028696	9.19	5133	-0.382	0.033	0.094	0.158	217.260519	33.844112	2275.77	-228.34

2.4 Star Slots

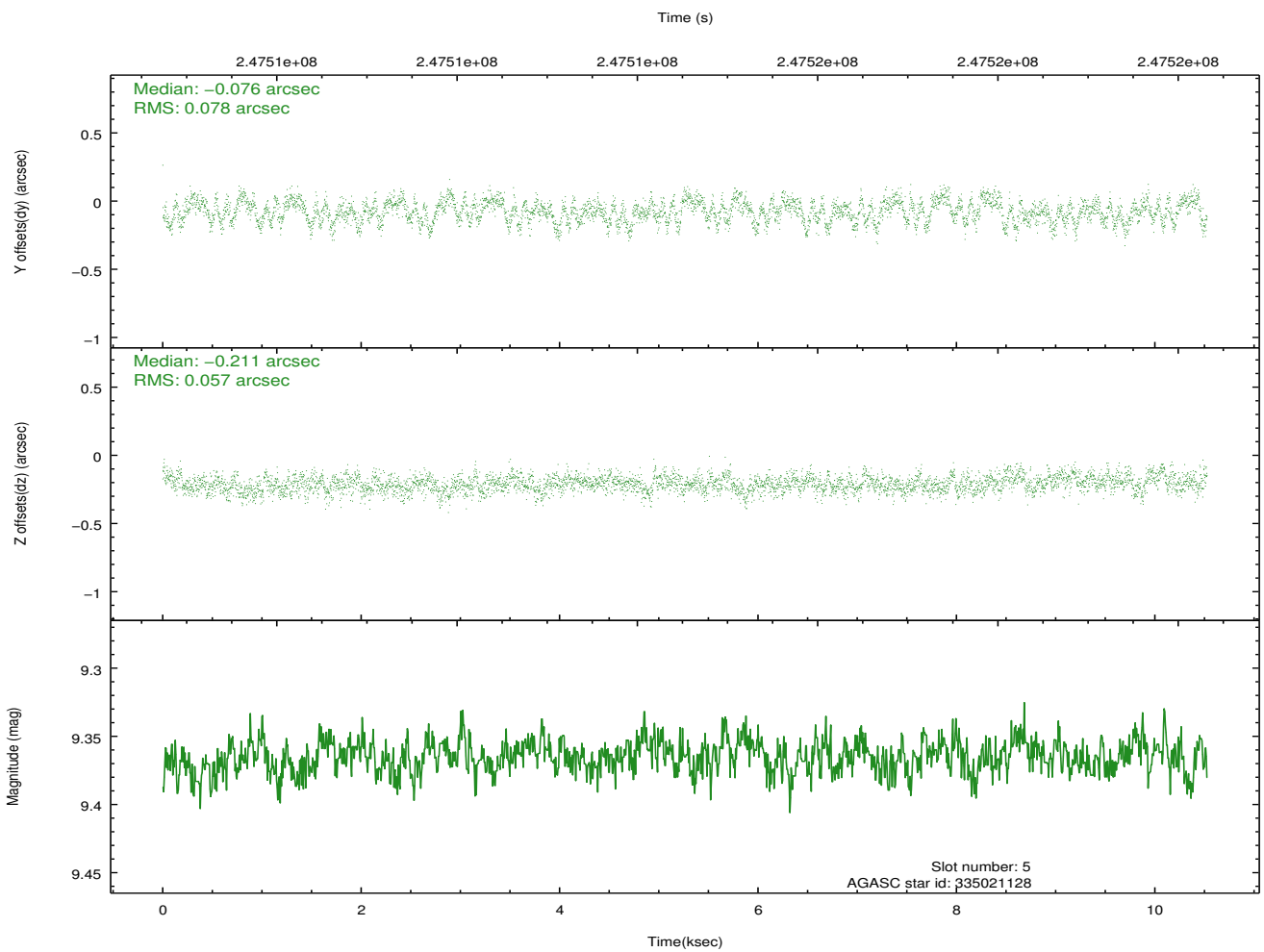
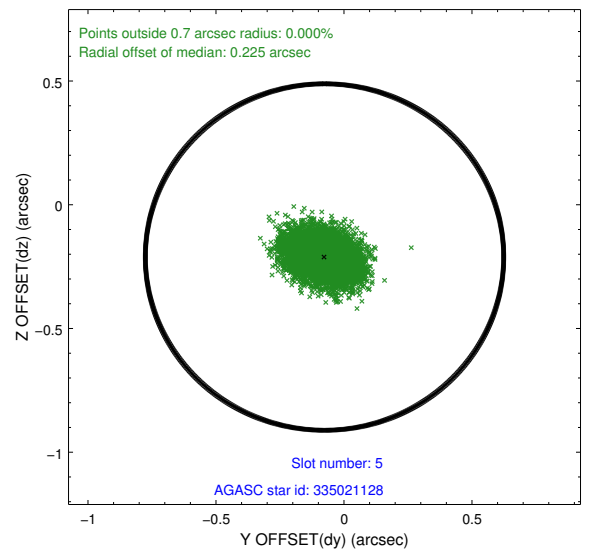
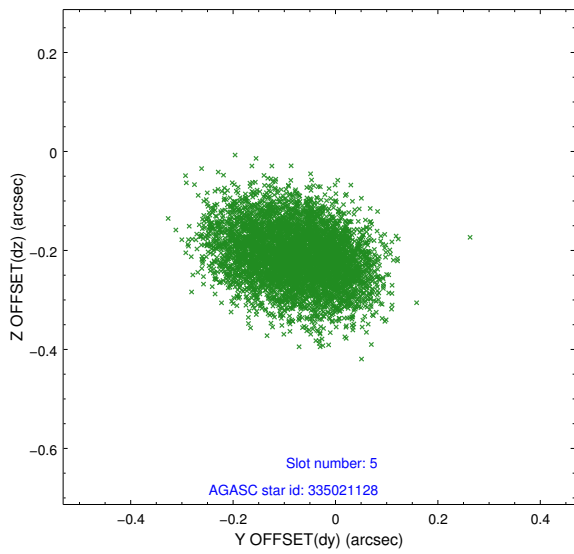
2.4.1 Slot 3



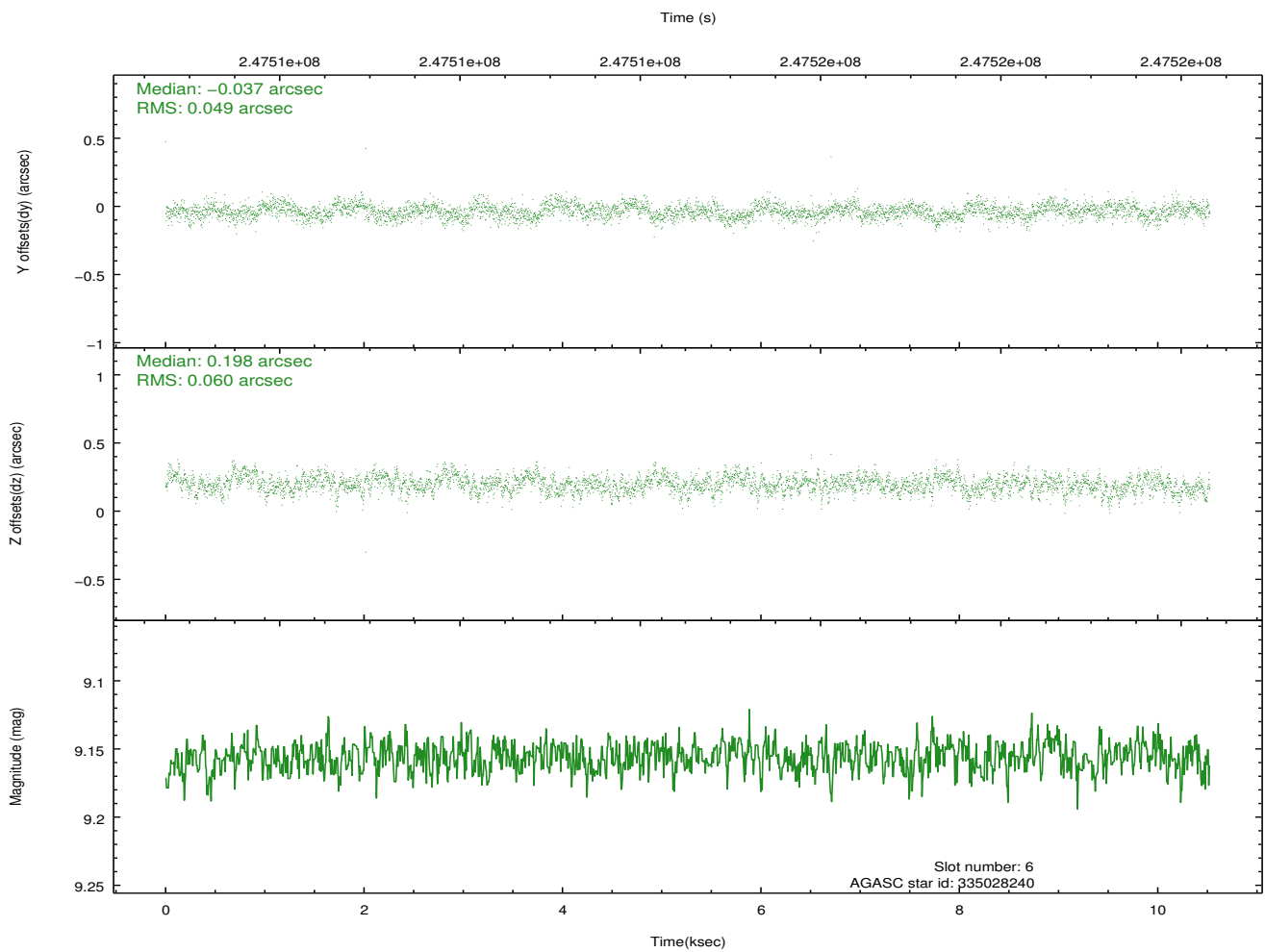
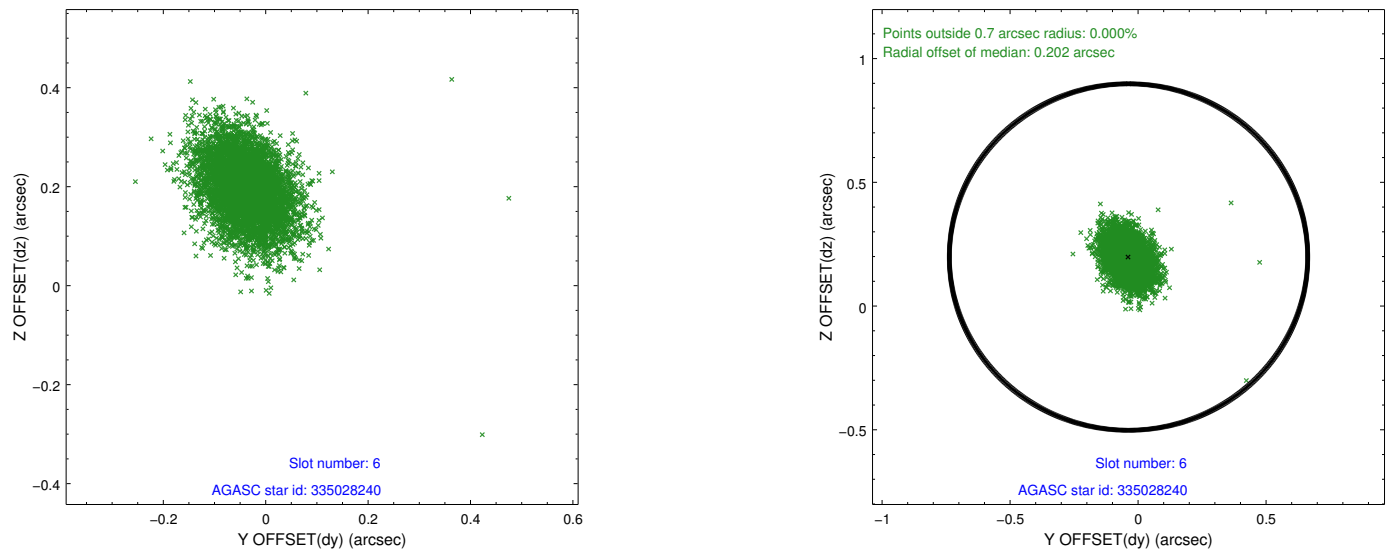
2.4.2 Slot 4



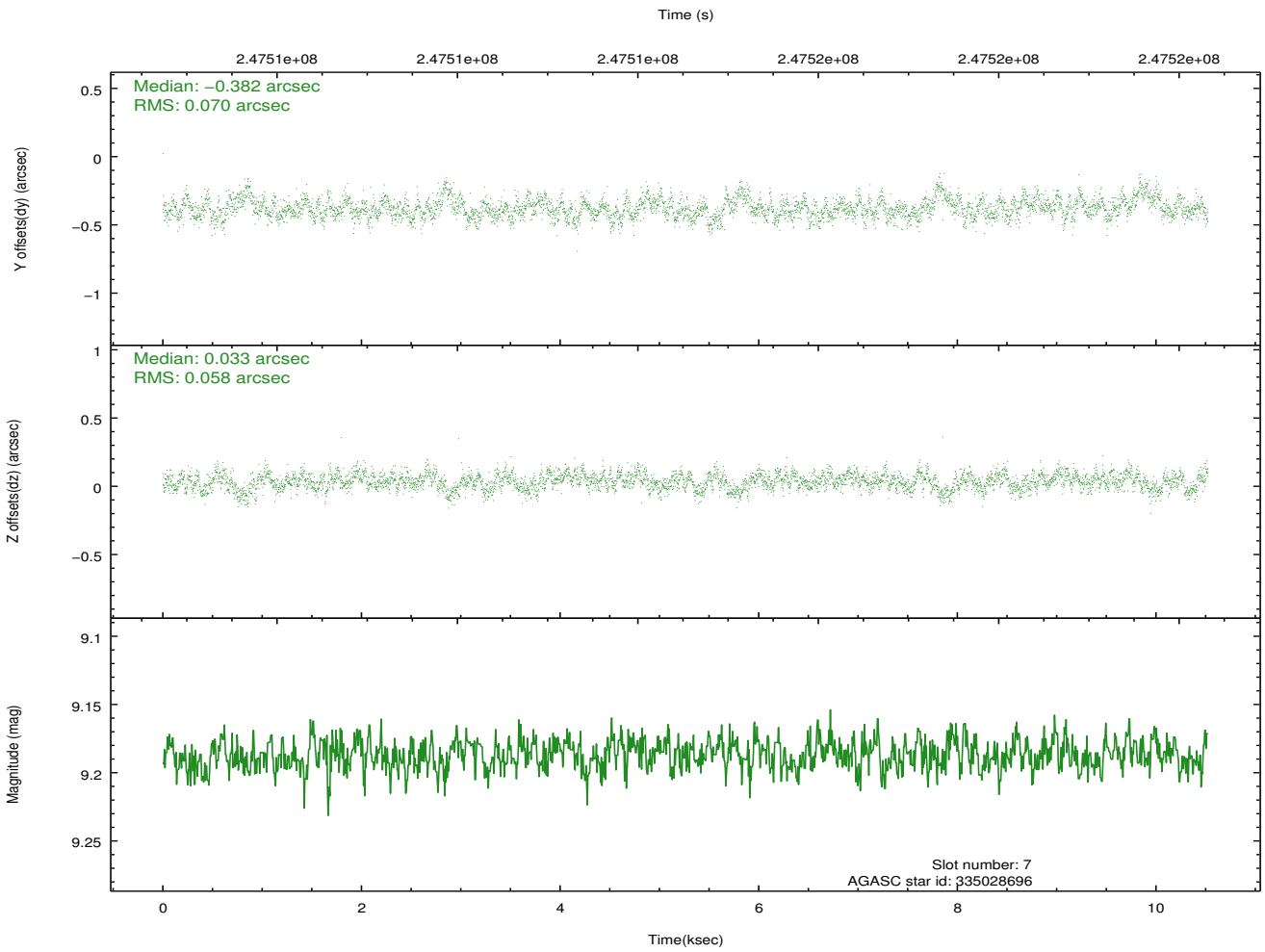
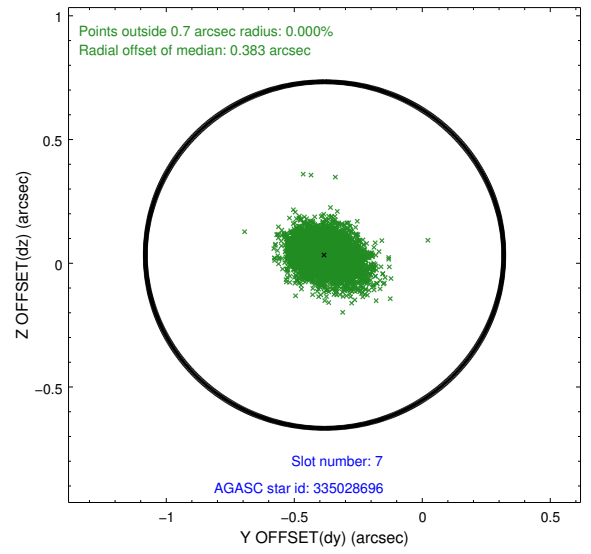
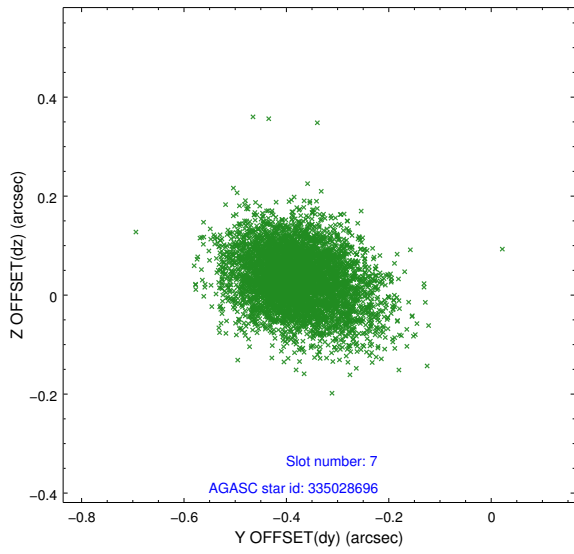
2.4.3 Slot 5



2.4.4 Slot 6

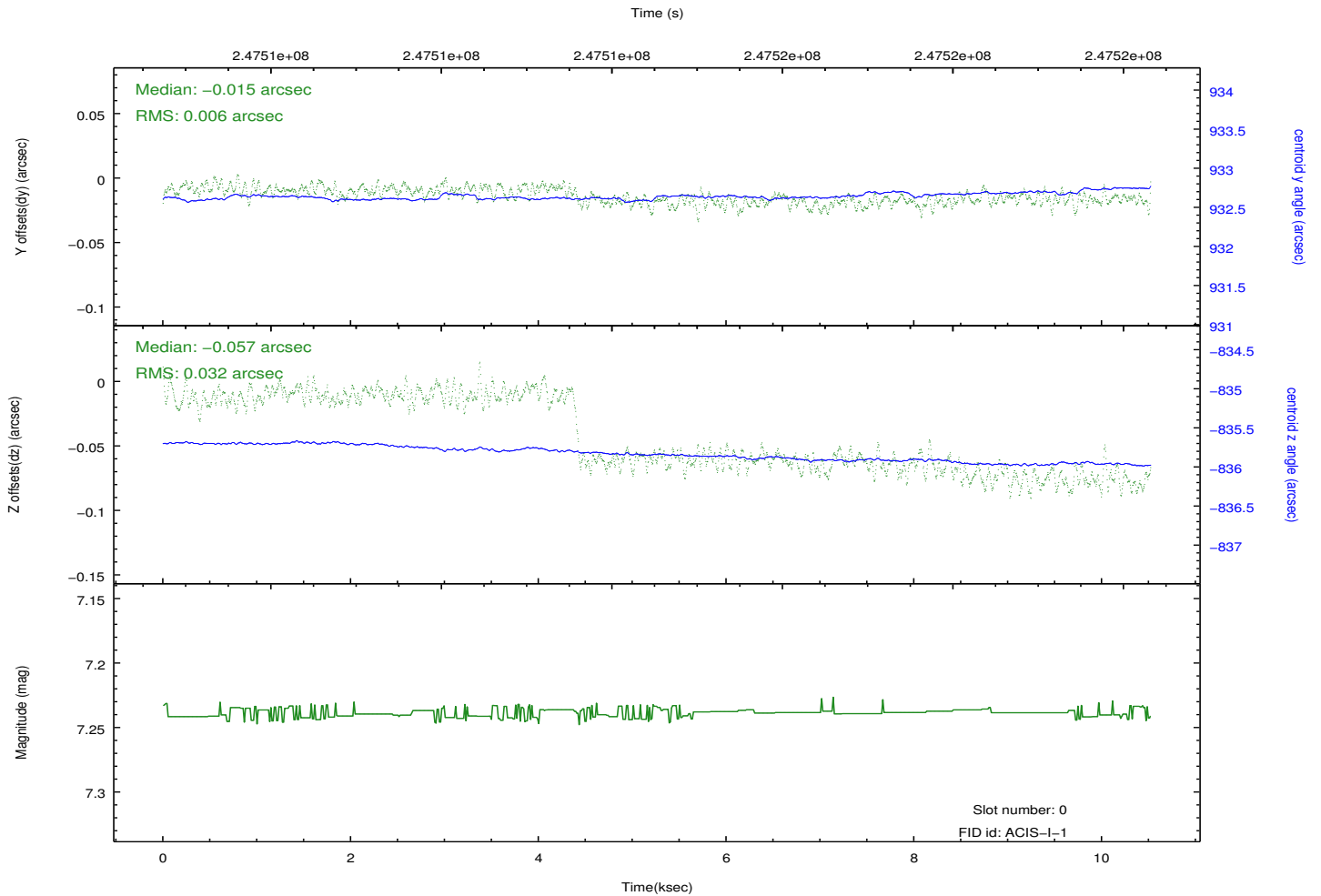
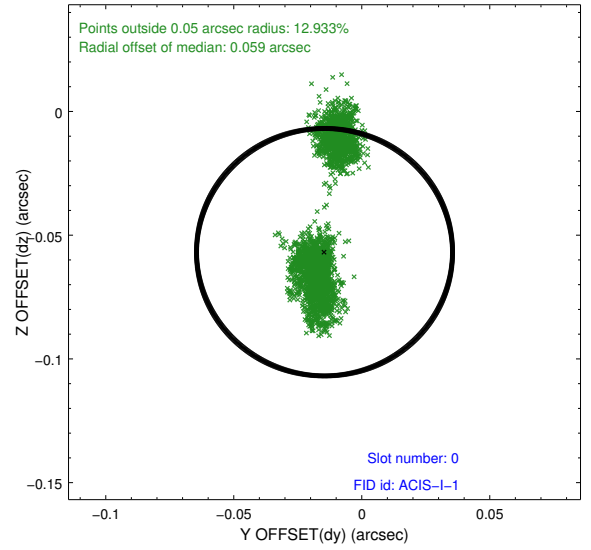
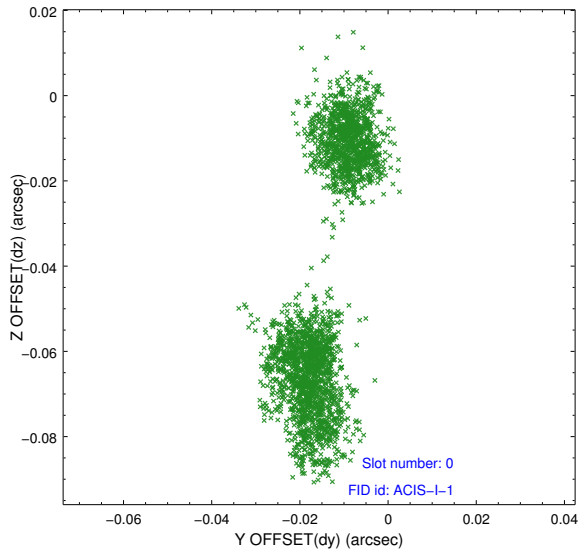


2.4.5 Slot 7

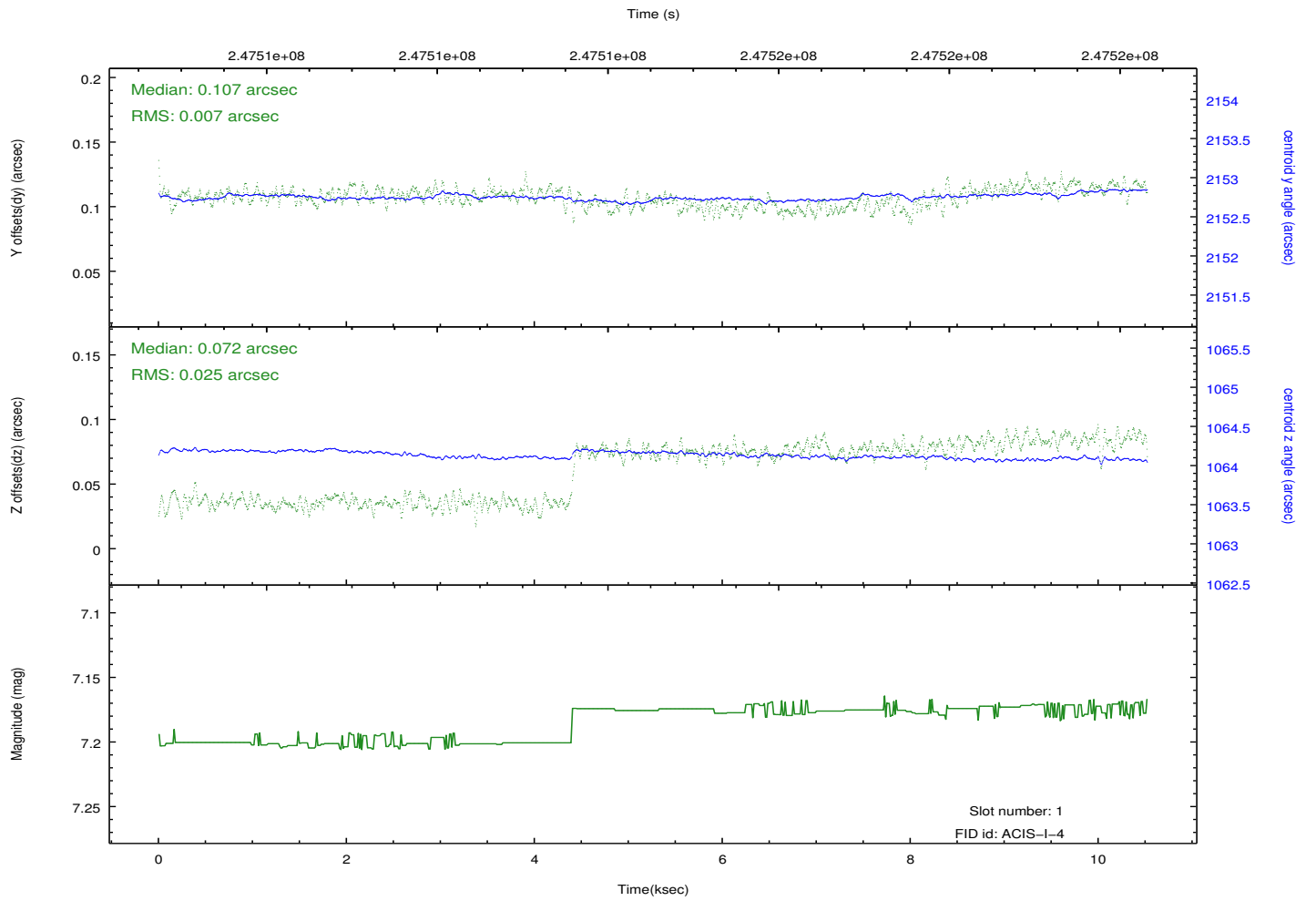
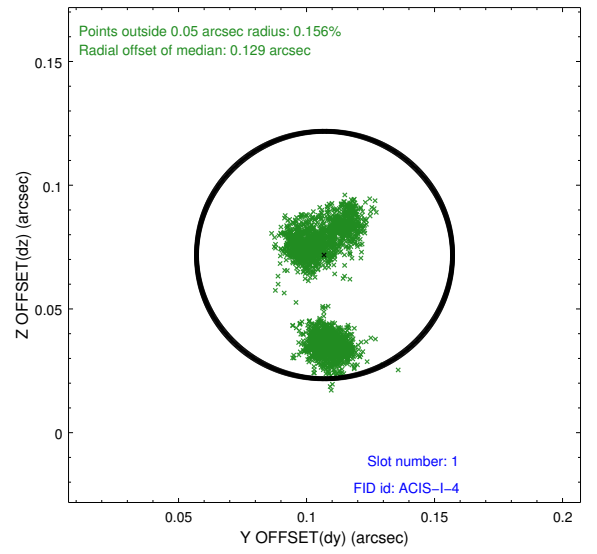
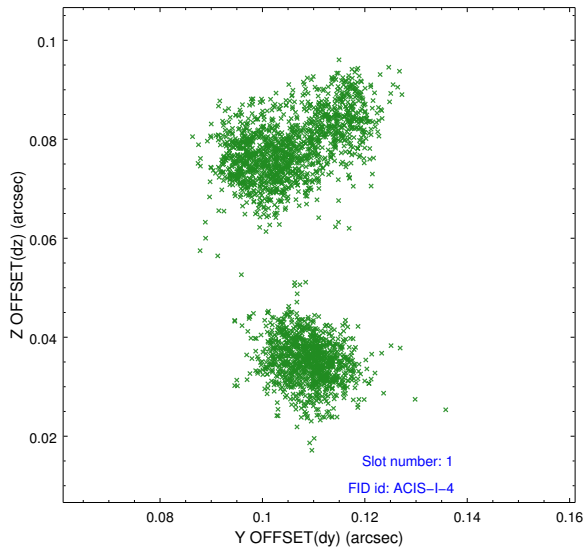


2.5 FID Slots

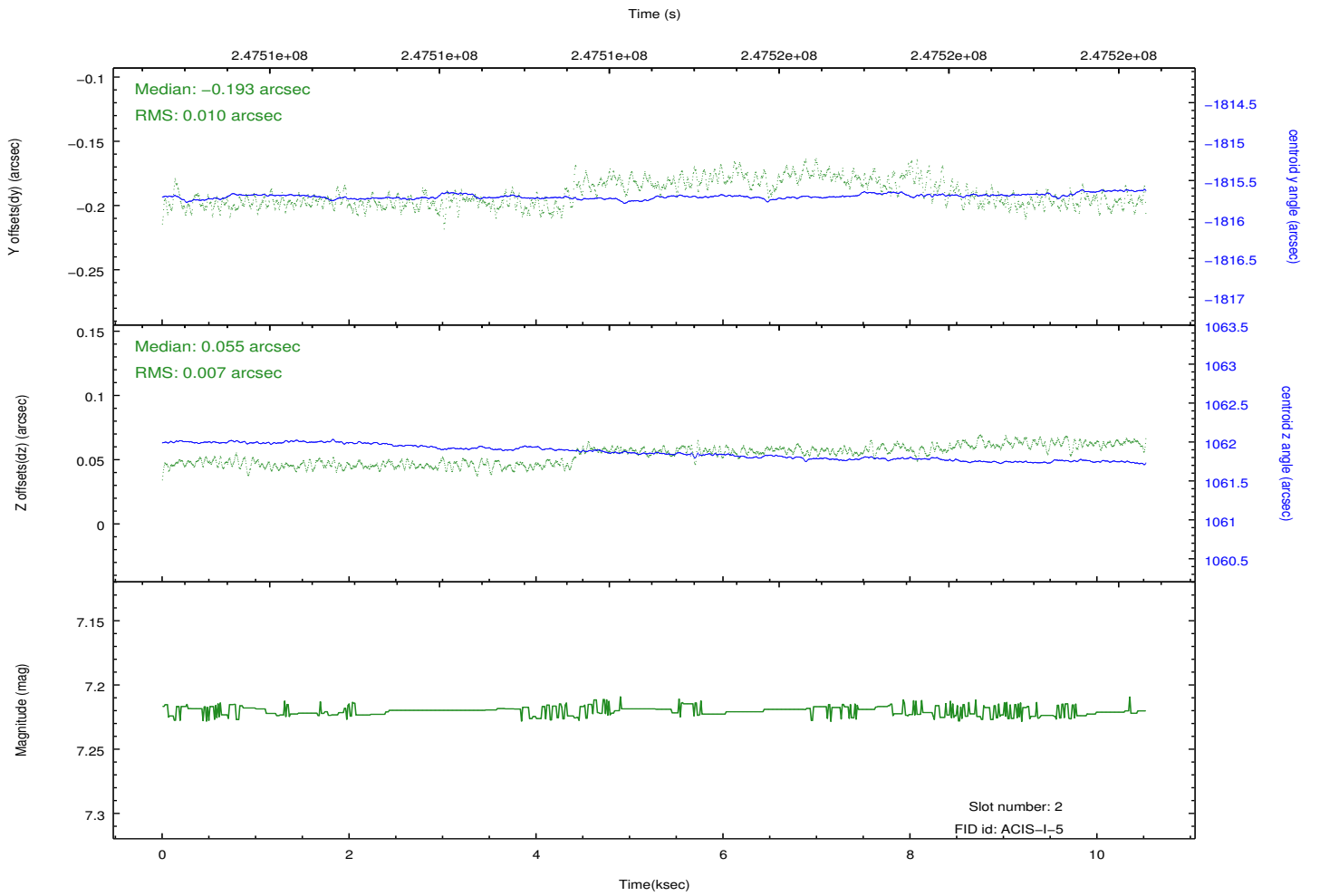
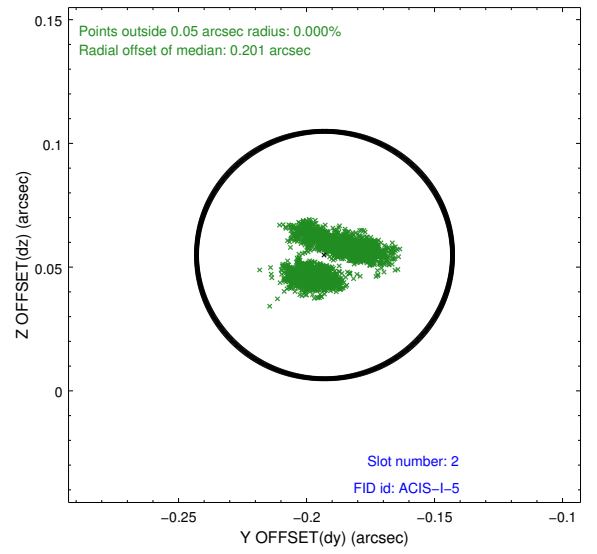
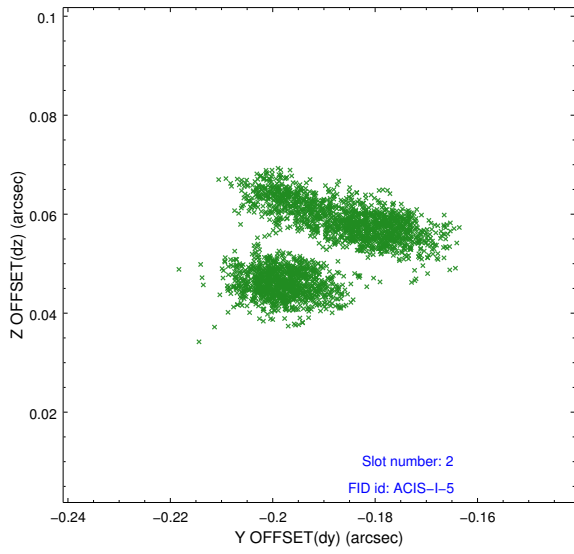
2.5.1 Slot 0



2.5.2 Slot 1



2.5.3 Slot 2



A Summary

A.1 Status

V&V Scientist	Jen Lauer
V&V Date (YYYY-MM-DD)	2013.01.28
V&V Edition	1
V&V Disposition and Status	OK
V&V Charge Time	10.05019

A.2 Comments