

V&V Reference Report

L2 ASCDS Version : 8.4.3.1

Observation 7165 - L2 Version 2
Chandra X-Ray Center

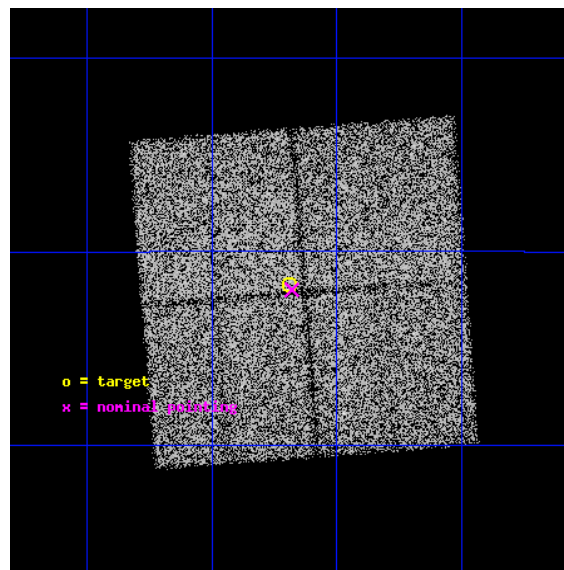
L2 Processing Date : Apr 12 2012

Contents

1	Front	2
2	OBI	3
2.1	OBI	3
2.1.1	Images	3
2.1.2	Bias	3
2.1.3	Parameters	4
2.1.4	Events	4
2.2	Compared Parameters	5
2.3	Aspect	6
2.4	Star Slots	9
2.4.1	Slot 3	9
2.4.2	Slot 4	10
2.4.3	Slot 5	11
2.4.4	Slot 6	12
2.4.5	Slot 7	13
2.5	FID Slots	14
2.5.1	Slot 0	14
2.5.2	Slot 1	15
2.5.3	Slot 2	16
A	Summary	17
A.1	Status	17
A.2	Comments	17

1 Front

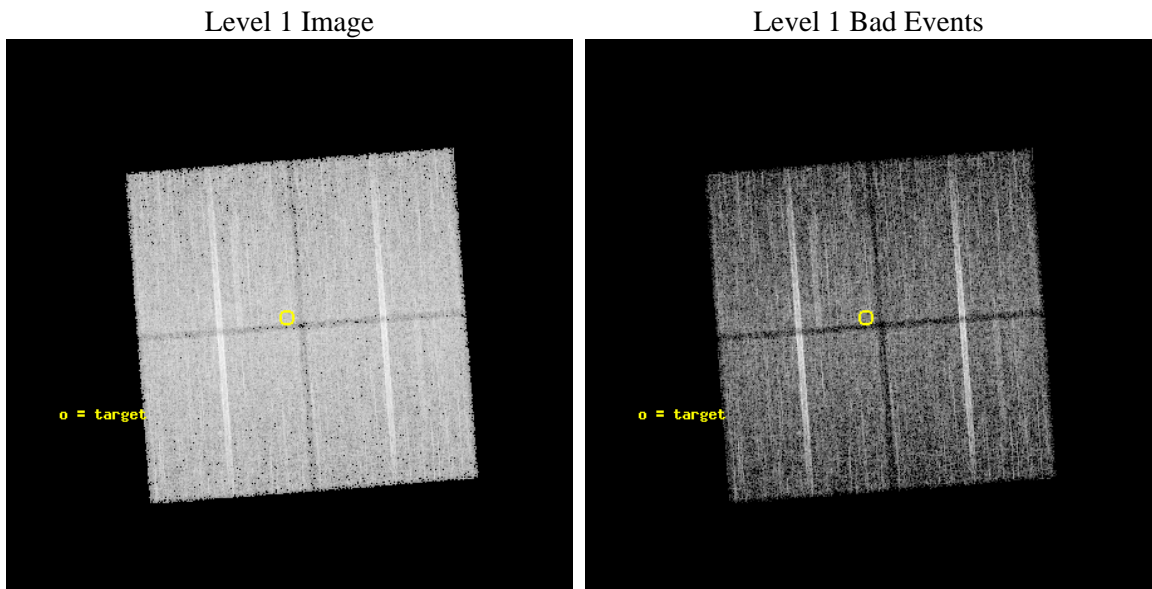
seq_num	600603	Sequence number
obs_id	7165	Observation id
title	Galactic Bulge Latitude Survey	Proposal title
observer	Professor Johnathan Grindlay	Principal investigator
object	GBW9	Source name
dtcycle	0	
cycle	P	events from which exps? Prim/Second/Both
ra_targ	267.1725	Observer's specified target RA [deg]
dec_targ	-29.362194	Observer's specified target Dec [deg]
ra_nom	267.17005758927	Nominal RA [deg]
dec_nom	-29.366314877667	Nominal Dec [deg]
roll_nom	265.59749876712	Nominal Roll [deg]
revision	2	Processing version of data
ontime	14151.500108838	Sum of GTIs [s]
livetime	13966.600341733	Livetime [s]
ontime0	14151.500108838	Sum of GTIs [s]
ontime1	14151.500108838	Sum of GTIs [s]
ontime2	14151.500108838	Sum of GTIs [s]
ontime3	14151.500108838	Sum of GTIs [s]
l2events	65432	Number of level 2 events



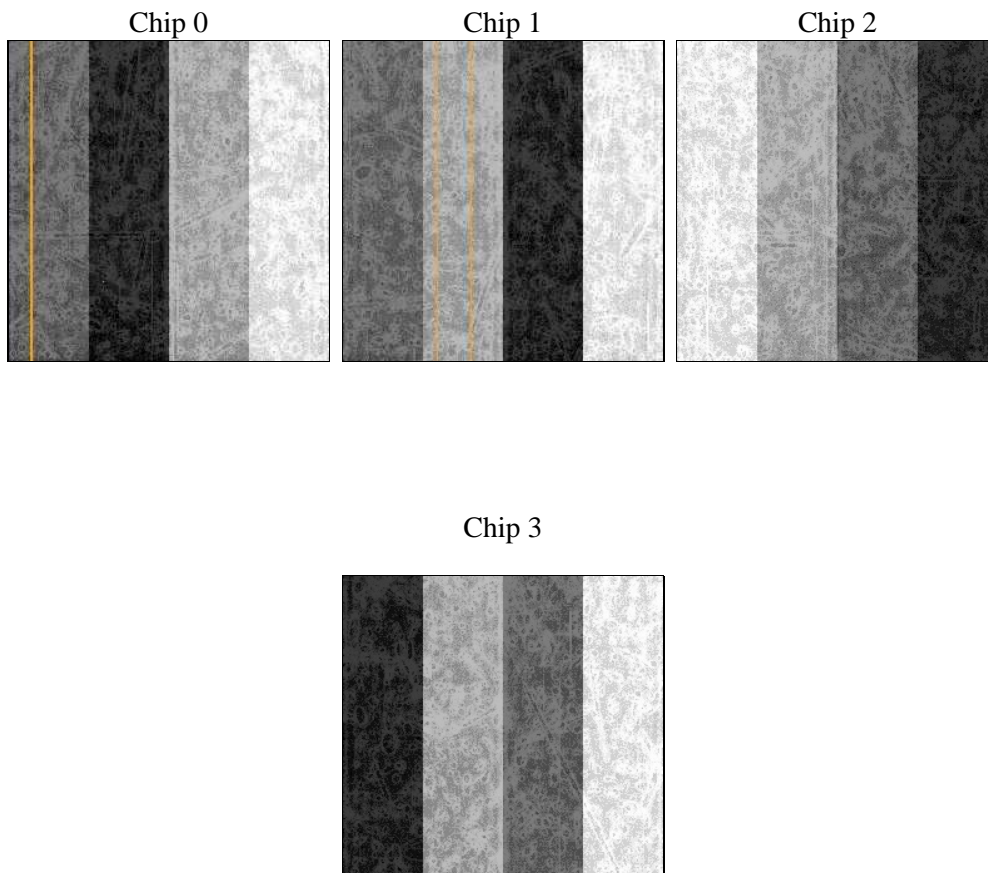
2 OBI

2.1 OBI

2.1.1 Images



2.1.2 Bias



2.1.3 Parameters

obi_num	1	Obi number	sched_exp_time	14000.000000	[s] Scheduled observation exposure time
ascdsver	8.4.3.1	Processing system revision	ontime	14151.500108838	Sum of GTIs [s]
caldsver	4.4.9	 	ontime0	14151.500108838	Sum of GTIs [s]
date	2012-04-12T08:07:44	Date and time of file creation	ontime1	14151.500108838	Sum of GTIs [s]
revision	2	Processing version of data	ontime2	14151.500108838	Sum of GTIs [s]
			ontime3	14151.500108838	Sum of GTIs [s]
			l1events	533797	Number of level 1 events

2.1.4 Events

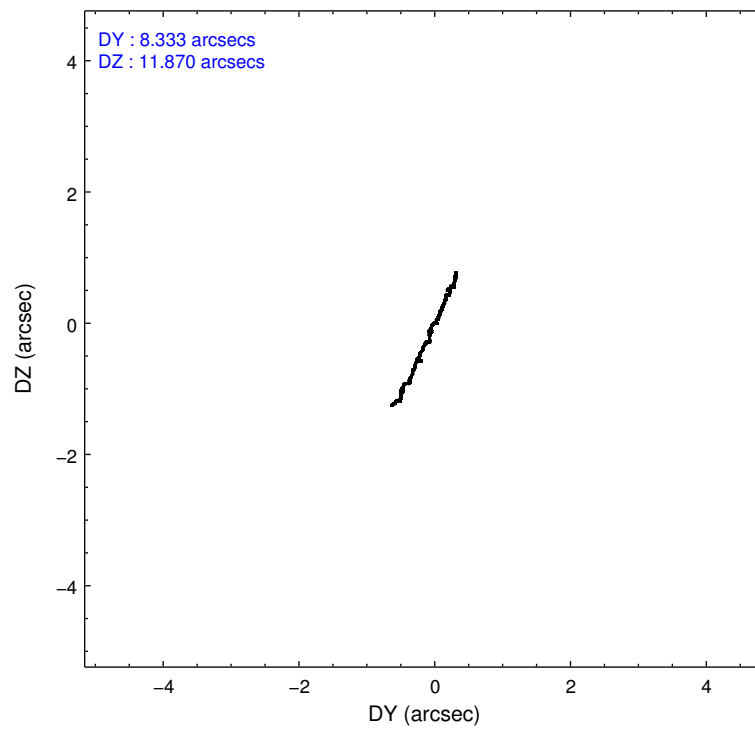
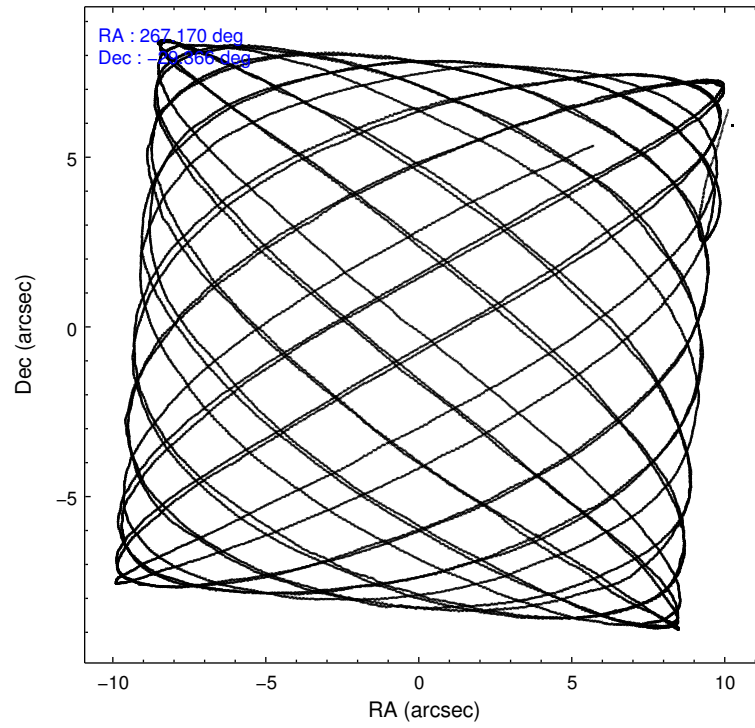
	ccd 0	ccd 1	ccd 2	ccd 3
level 1 events	129893	127977	137550	138377
rejected events	111292	108828	118718	119714
rejected %	85%	85%	86%	86%

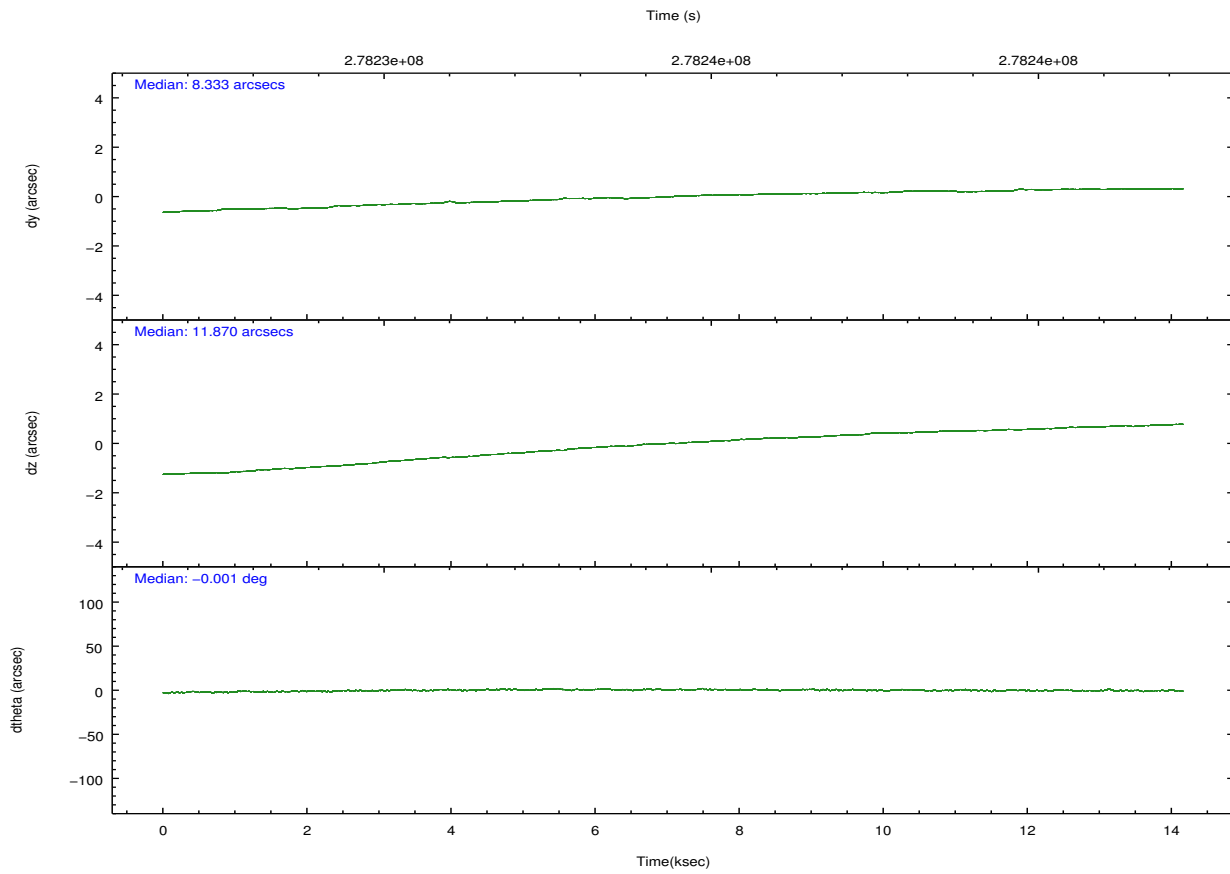
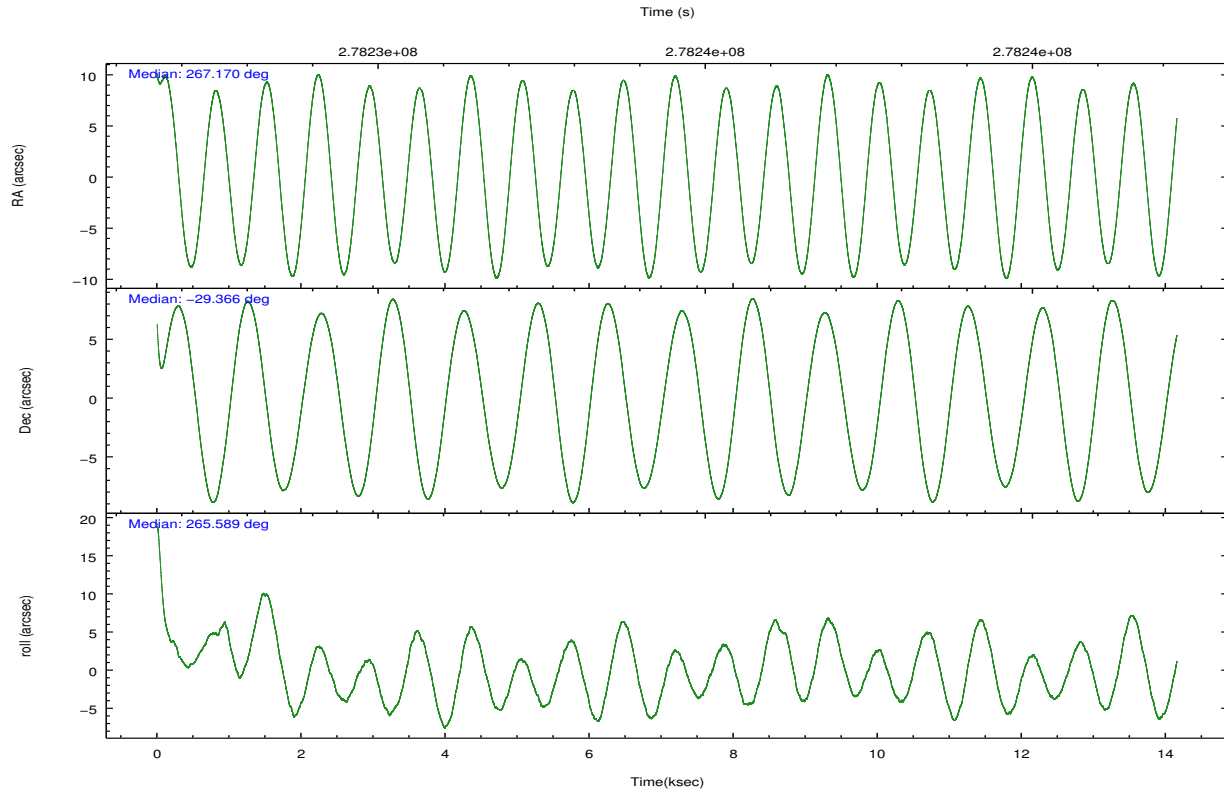
	ccd 0	ccd 1	ccd 2	ccd 3
grade 0 events	9385	8761	9958	9743
	7%	6%	7%	7%
grade 1 events	78	90	92	106
	0%	0%	0%	0%
grade 2 events	3866	4181	3654	3420
	2%	3%	2%	2%
grade 3 events	1644	1759	1602	1631
	1%	1%	1%	1%
grade 4 events	1581	1680	1628	1696
	1%	1%	1%	1%
grade 5 events	5319	5936	5077	6240
	4%	4%	3%	4%
grade 6 events	2902	3542	2705	2838
	2%	2%	1%	2%
grade 7 events	105118	102028	112834	112703
	80%	79%	82%	81%

2.2 Compared Parameters

Parameter	Planned	Actual	Parameter	Planned	Actual
Instrument	ACIS	ACIS	Obspar format version number	7	7
Detector	ACIS-0123	ACIS-0123	Obspar file type	PREDICTED	ACTUAL
Grating	NONE	NONE	Obspar update status	NONE	UPDATED
Data mode	VFAINT	VFAINT	Number of optional ACIS chips dropped	0	0
Observation mode	POINTING	POINTING	On-chip summing requested	N	N
[deg] Pointing RA	267.156370	267.1700575892685	Subarray requested	NONE	NONE
[deg] Pointing Dec	-29.341667	-29.36631487766738	Alternating exposures requested	N	N
[deg] Pointing Roll	265.382098	265.5974987671175	[s] Primary exposure time	0.000000	3.1
[mm] SIM focus pos	-0.782348	-0.7809083437167272			
[mm] SIM defocus	0	0.001439871863259334			
[mm] SIM translation stage pos	-233.592463	-233.5874344608287			
[mm] SIM translation stage offset	0	-0.005018542100998502			
[s] Observation start time (MET)	278227489.184000	278226286.40734			
Observation start date	2006-10-26T05:23:44	2006-10-26T05:04:46			
[s] Observation end time (MET)	278241489.184000	278241622.97057			
Observation end date	2006-10-26T09:17:04	2006-10-26T09:20:22			
Read mode	TIMED	TIMED			

2.3 Aspect





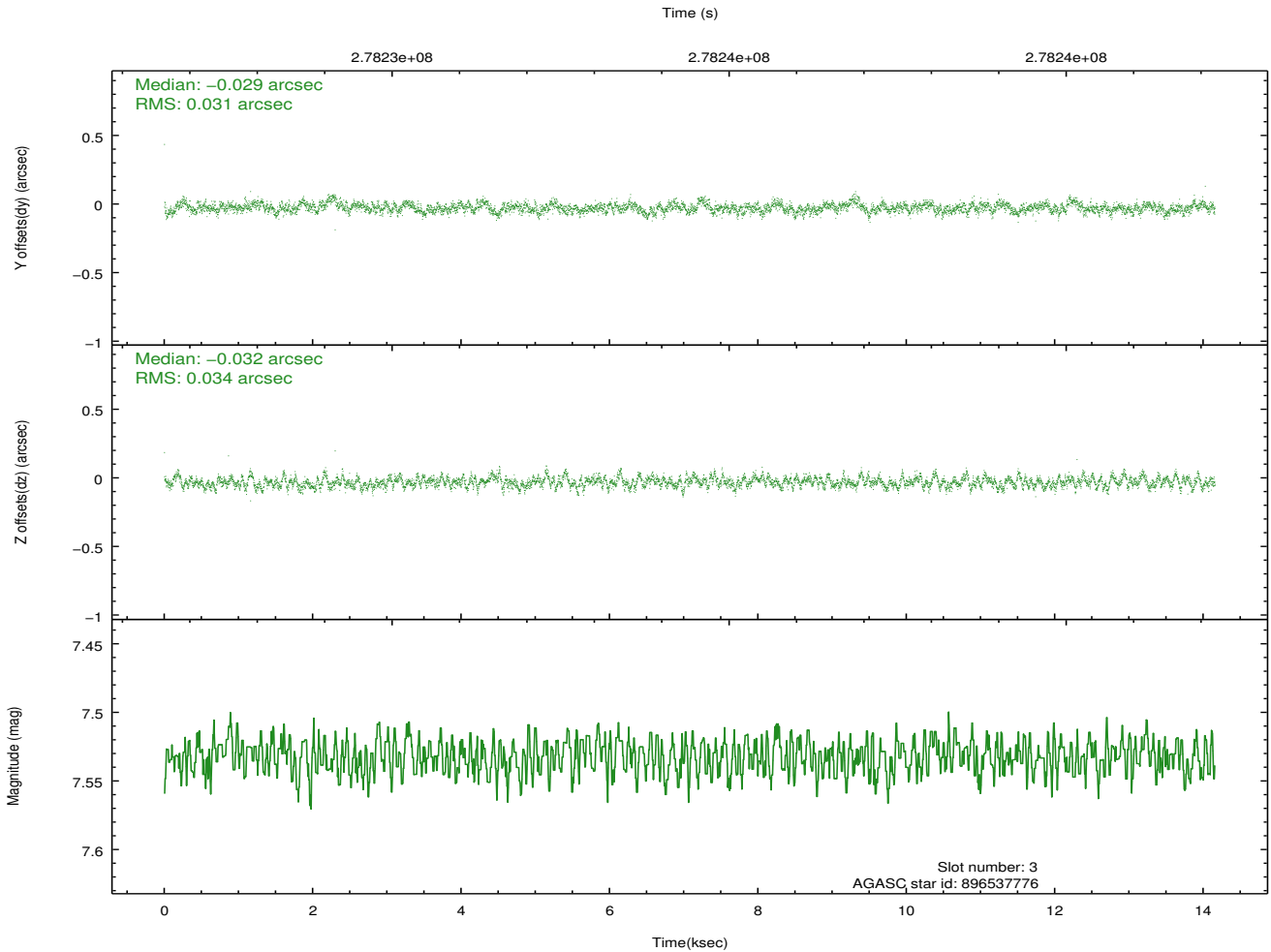
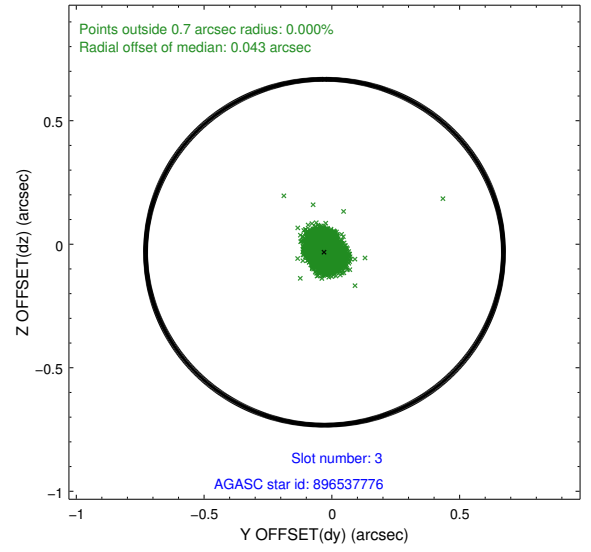
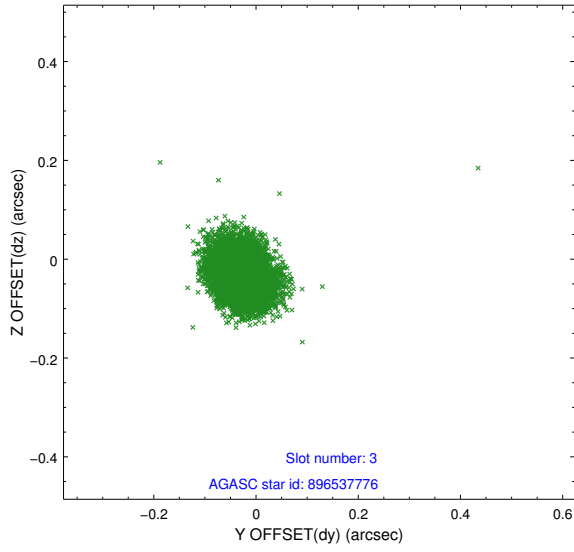
Slot Statistics

slot	status	id	mag	n_pts	med_dy	med_dz	dr1	dr2	ra	dec	mean_y	mean_z
0	FID	ACIS-I-1	7.24	3453	0.056	-0.042	0.015	0.023	0.000000	0.000000	931.41	-835.33
1	FID	ACIS-I-5	7.23	3454	-0.192	0.061	0.013	0.022	0.000000	0.000000	-1816.74	1062.13
2	FID	ACIS-I-6	7.24	3453	0.047	0.050	0.019	0.030	0.000000	0.000000	396.62	1706.97
3	GUIDE	896537776	7.53	6907	-0.029	-0.032	0.048	0.079	266.655684	-29.665673	1292.61	-1466.61
4	GUIDE	896541576	8.18	6905	-0.200	0.106	0.061	0.098	267.051055	-28.762912	-2049.47	-499.27
5	GUIDE	896542048	9.23	6897	-0.146	0.107	0.089	0.145	267.742937	-29.132026	-896.59	1778.23
6	GUIDE	896541168	8.18	6904	0.231	-0.129	0.081	0.132	266.319970	-29.850801	2047.54	-2454.30
7	GUIDE	896540528	8.26	6901	0.135	-0.050	0.063	0.100	267.368305	-29.314773	-148.75	655.43

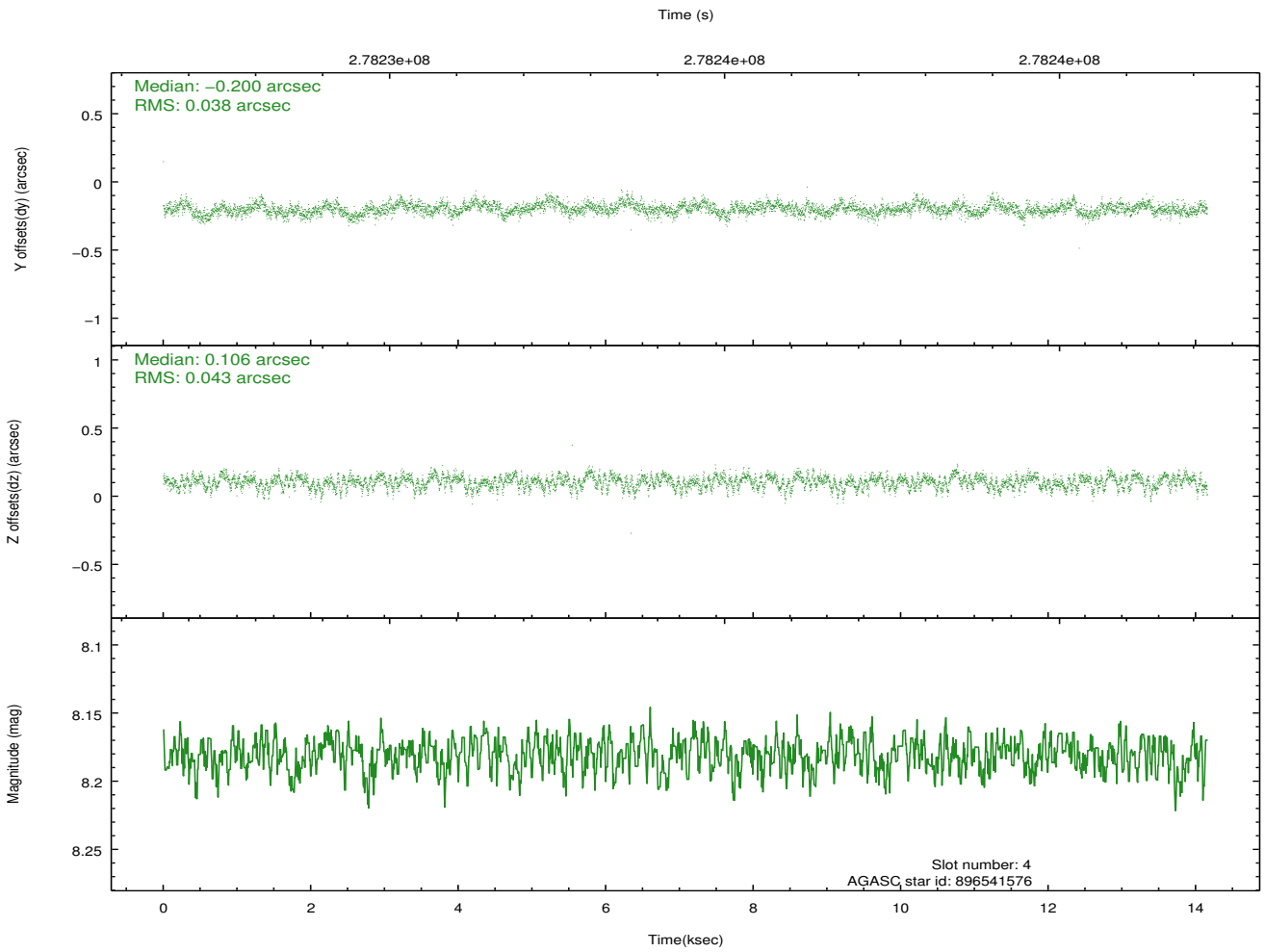
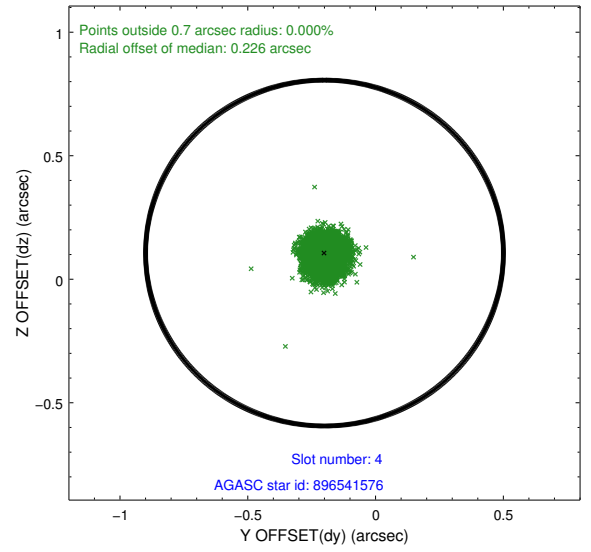
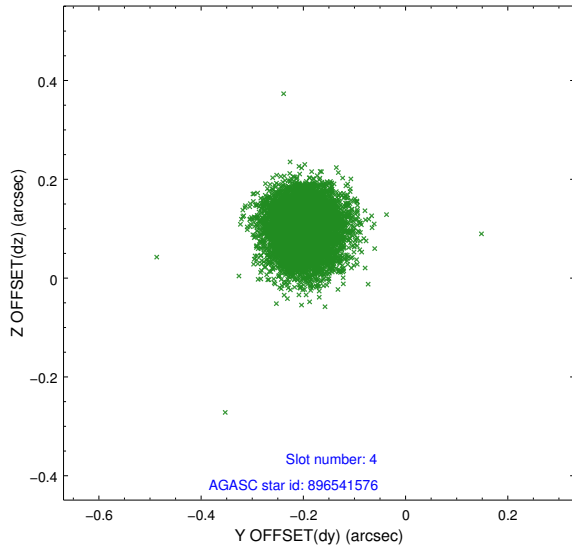
∞

2.4 Star Slots

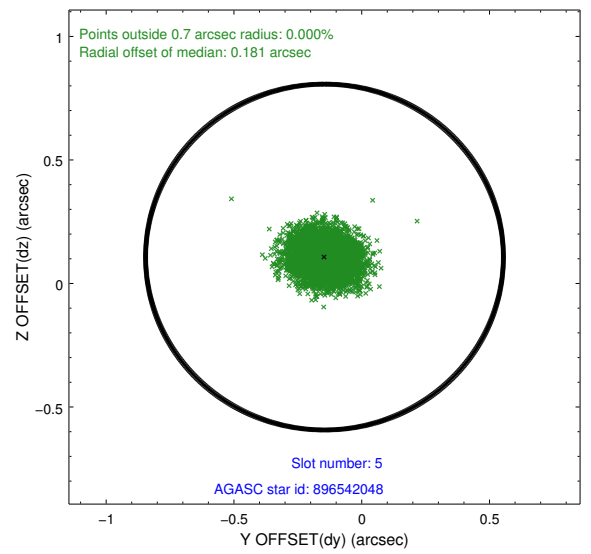
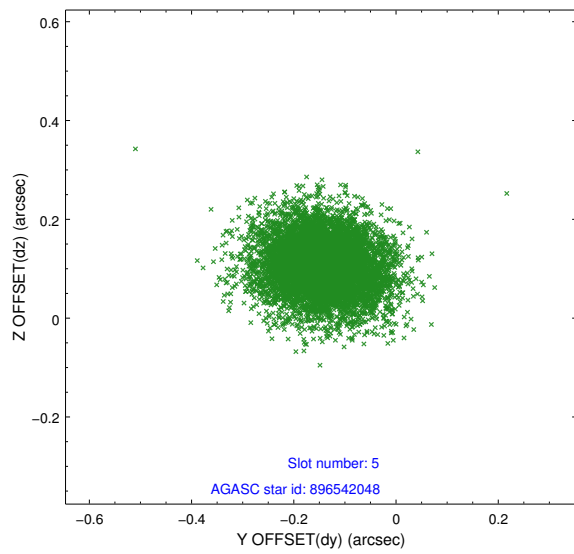
2.4.1 Slot 3



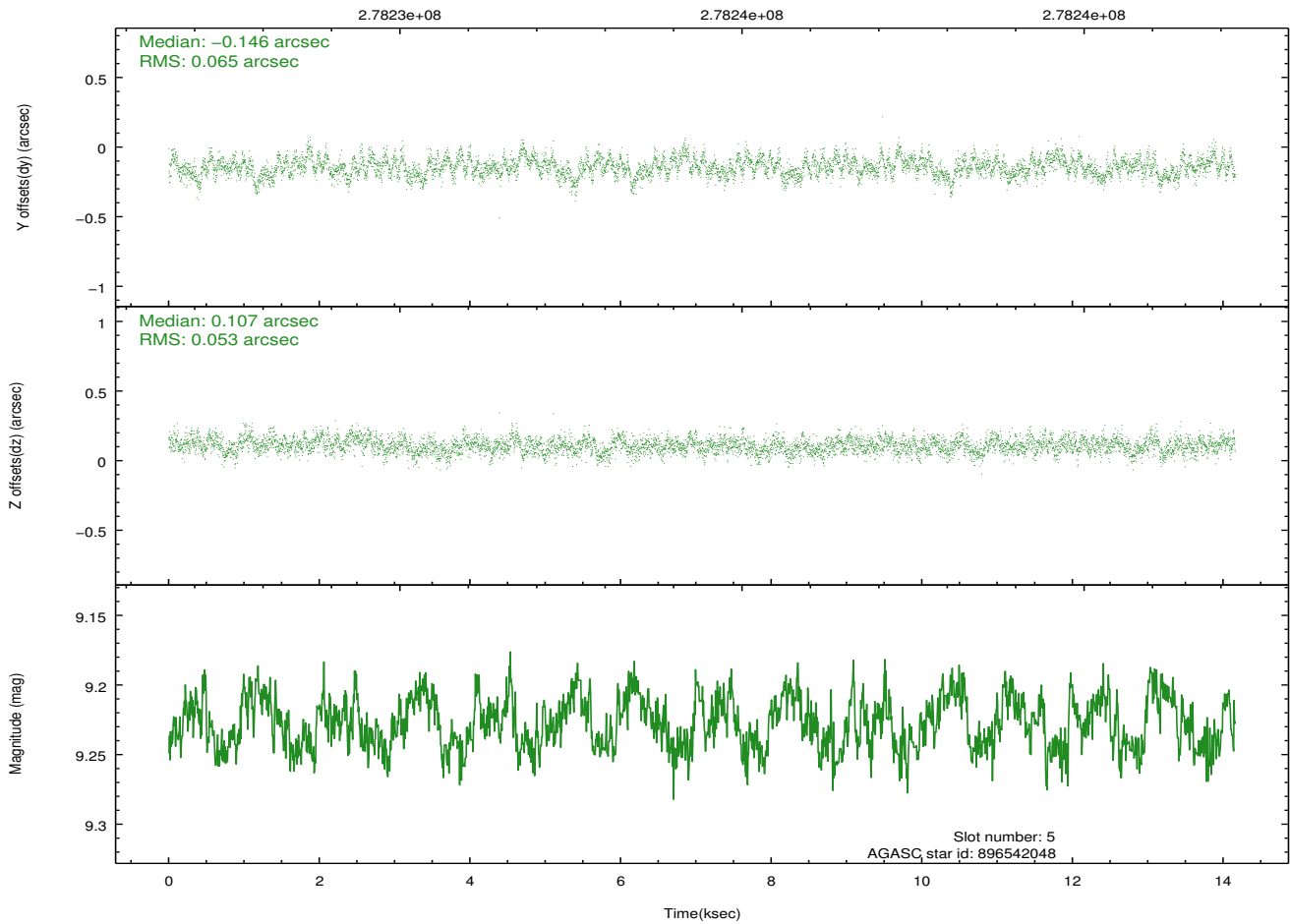
2.4.2 Slot 4



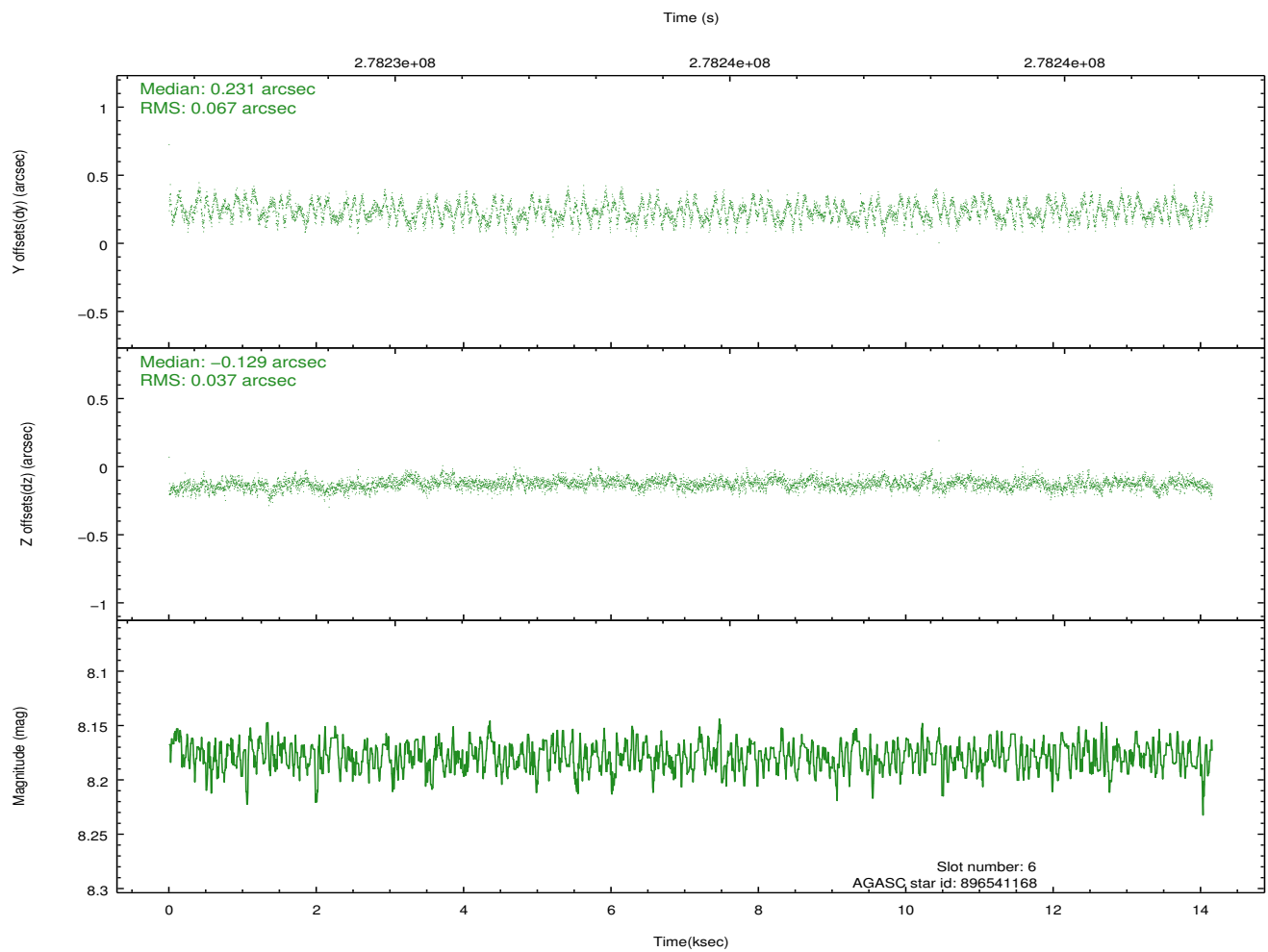
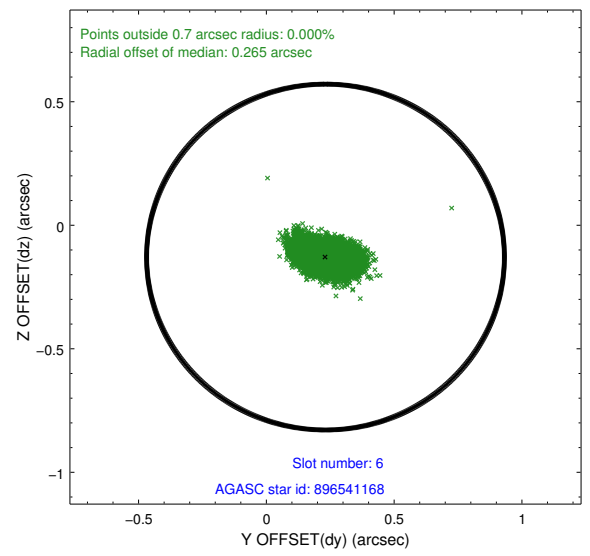
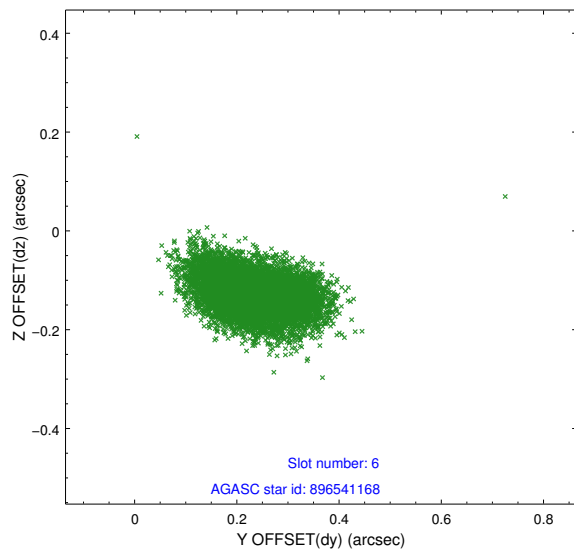
2.4.3 Slot 5



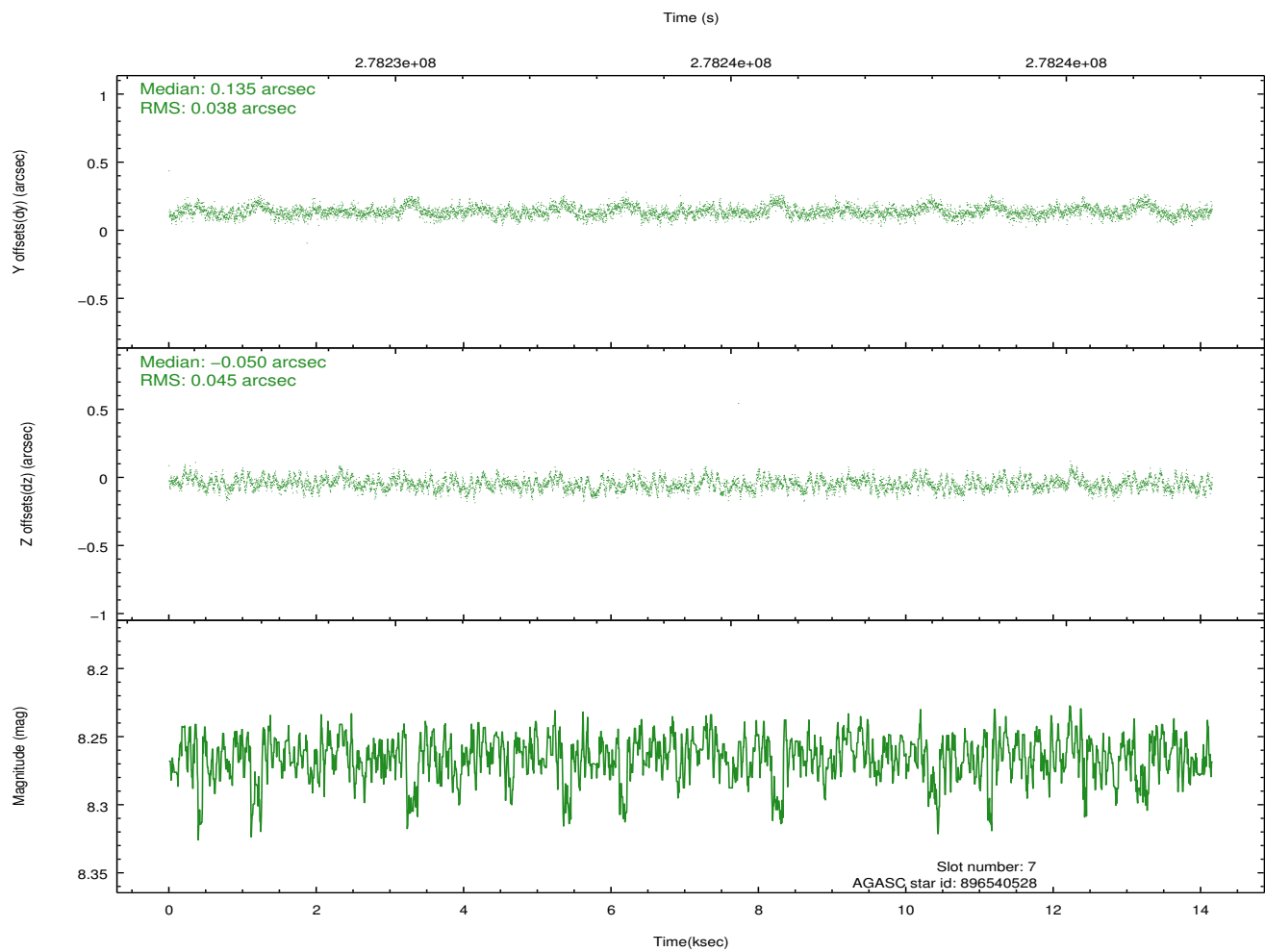
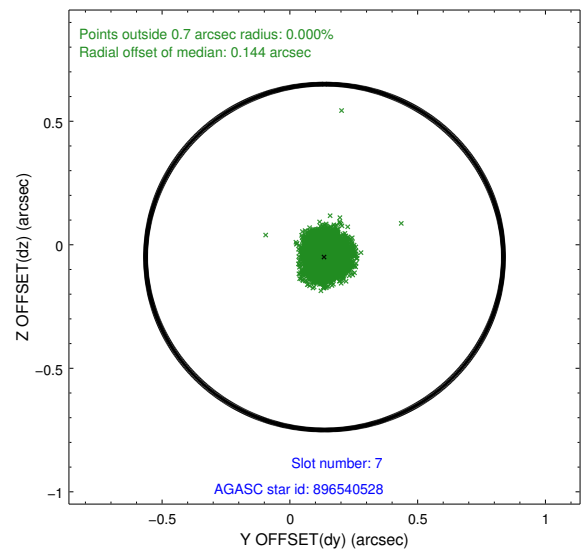
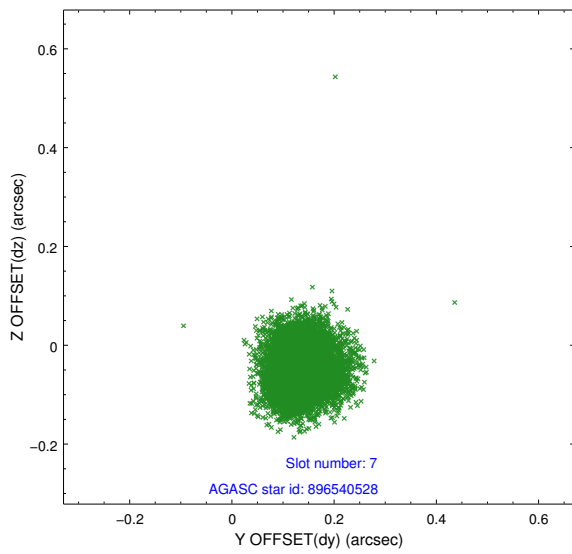
Time (s)



2.4.4 Slot 6

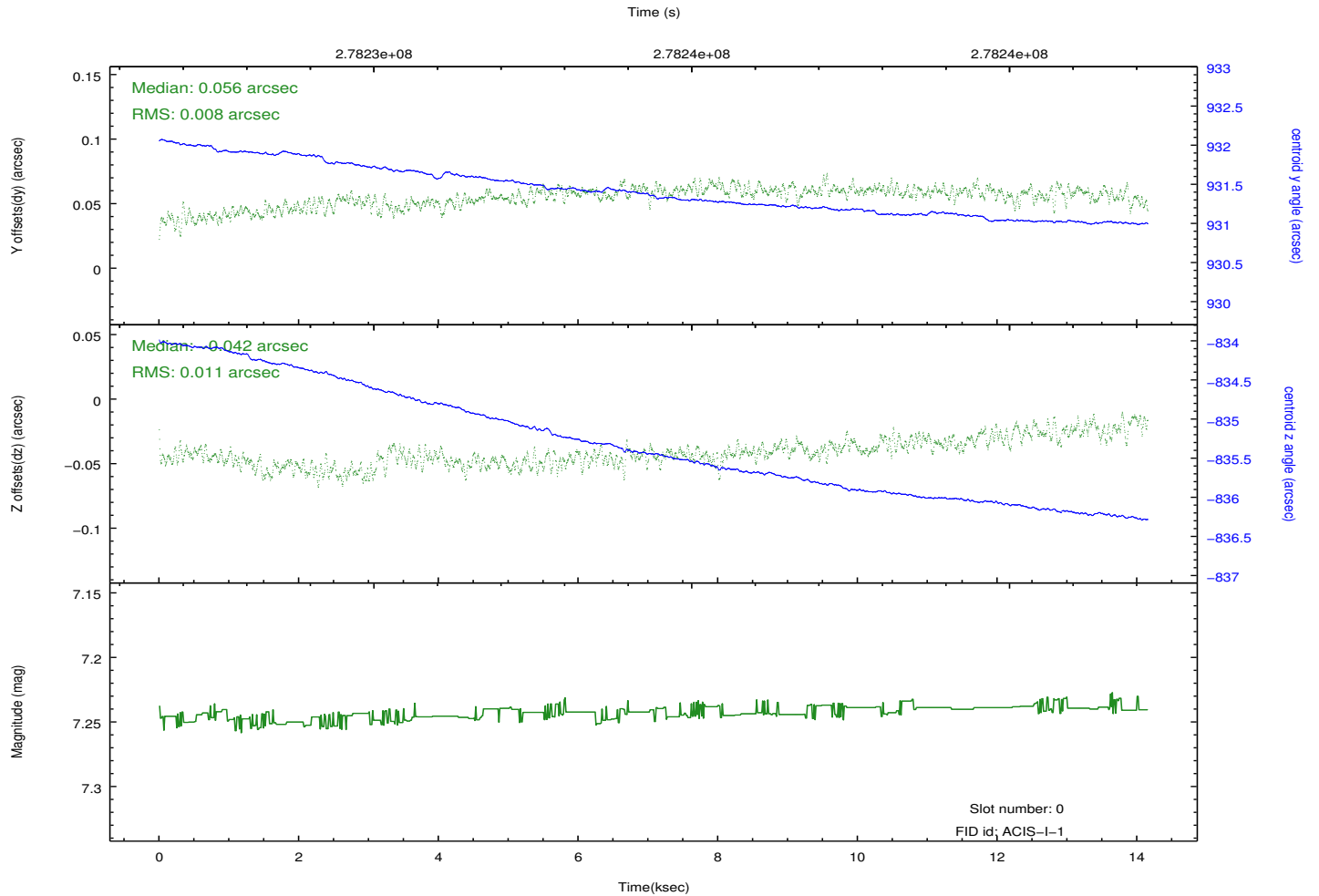
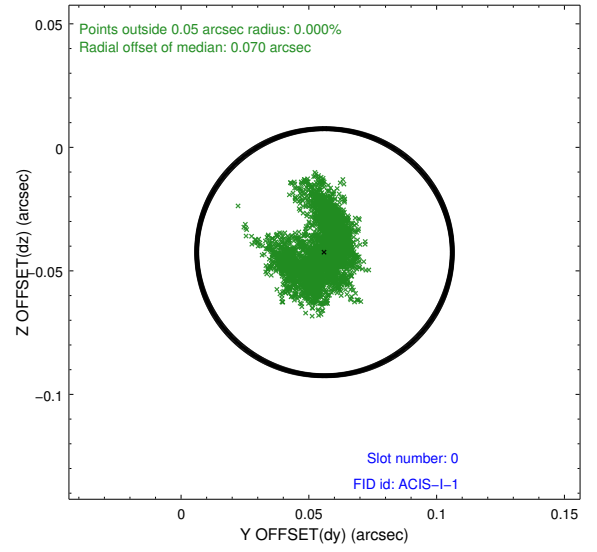
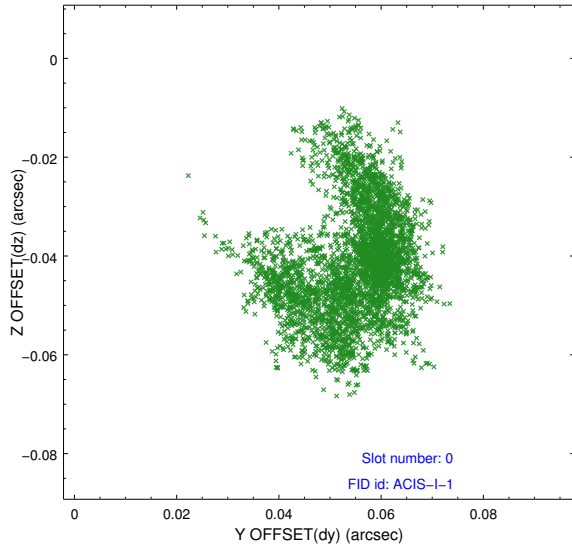


2.4.5 Slot 7

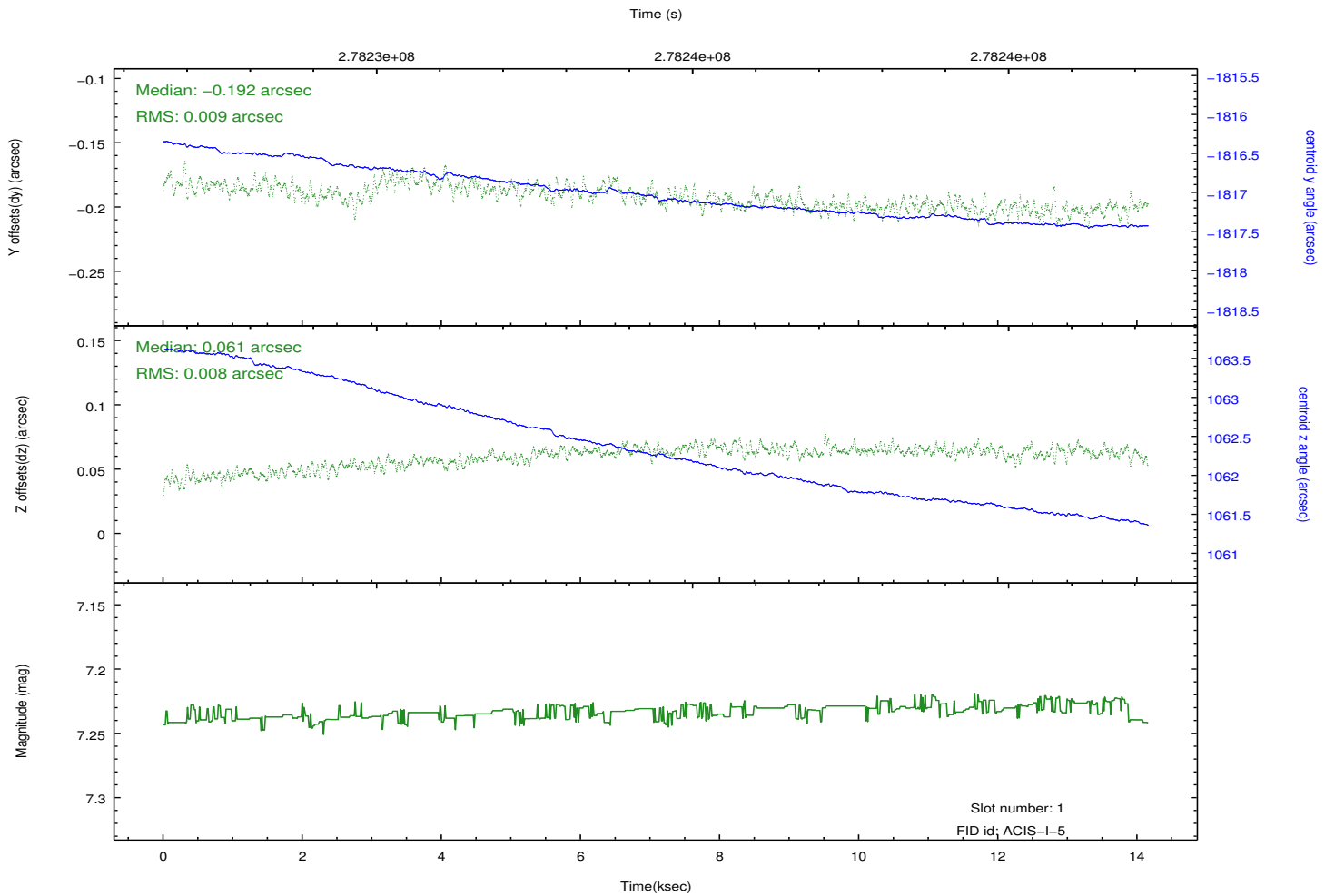
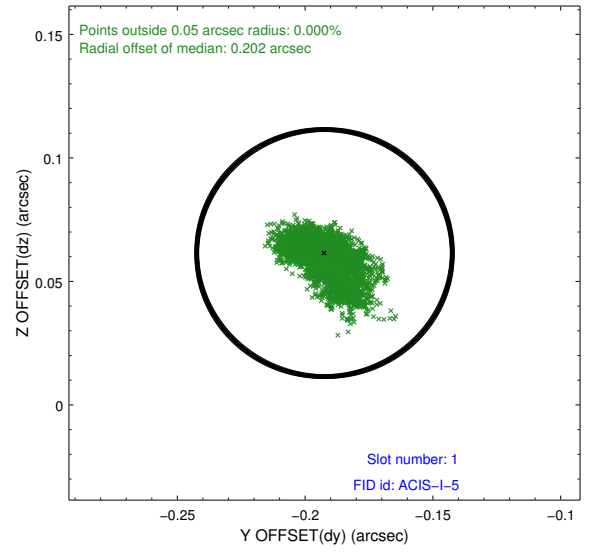
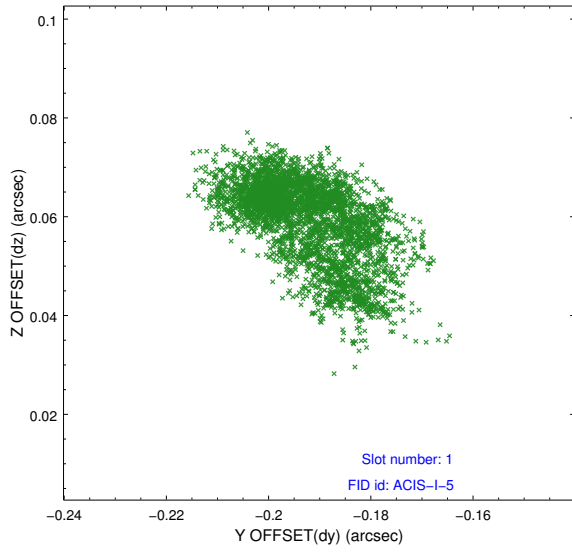


2.5 FID Slots

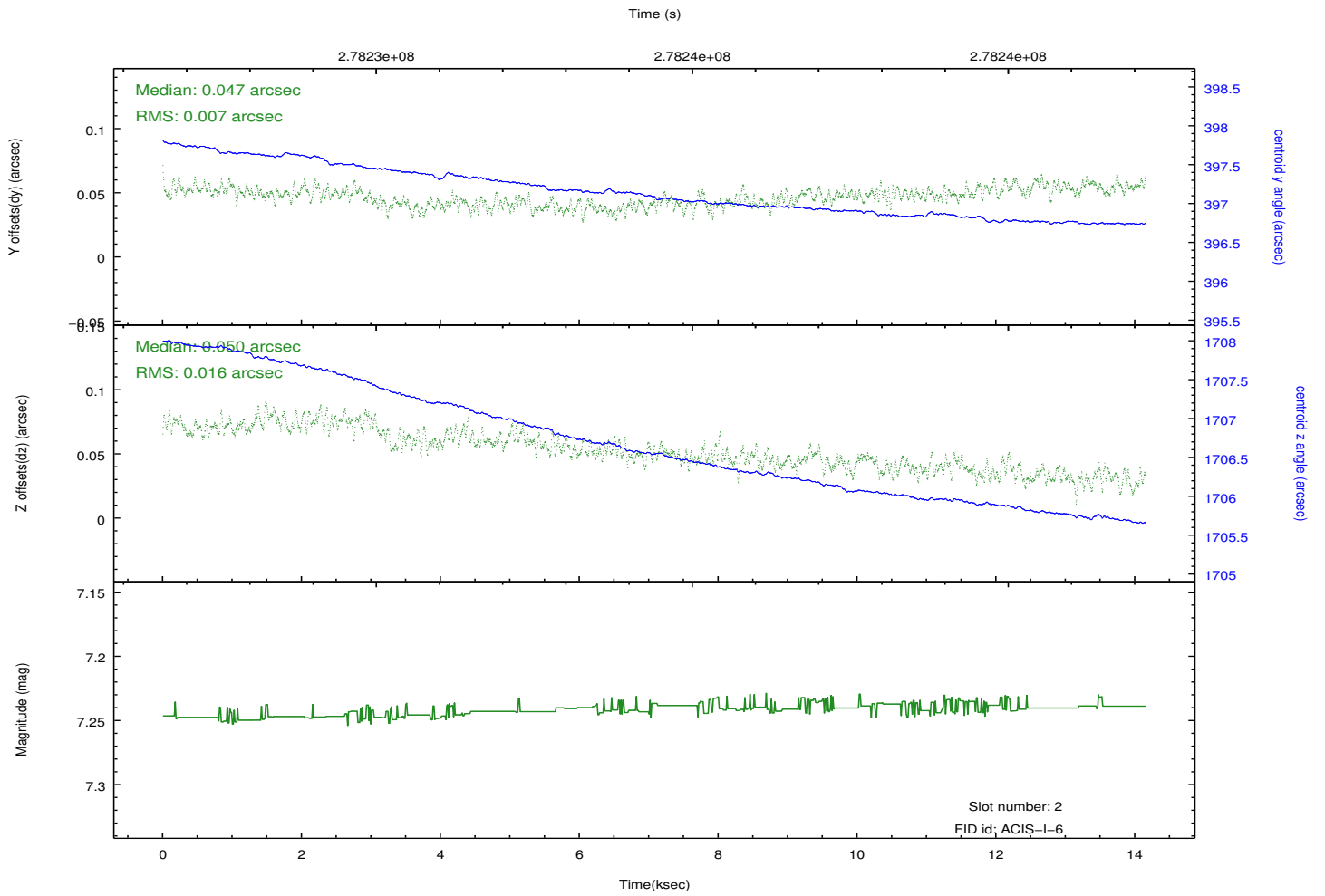
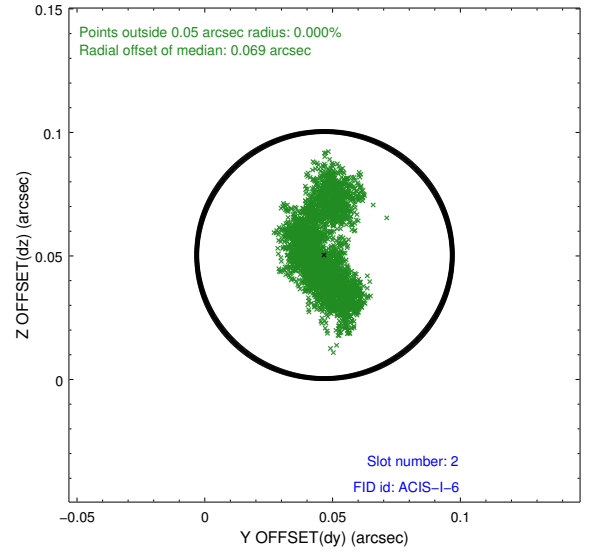
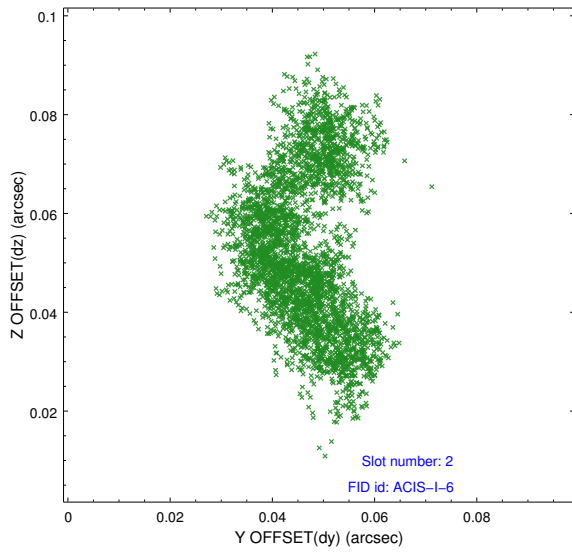
2.5.1 Slot 0



2.5.2 Slot 1



2.5.3 Slot 2



A Summary

A.1 Status

V&V Scientist	Jen Lauer
V&V Date (YYYY-MM-DD)	2012.04.12
V&V Edition	1
V&V Disposition and Status	OK
V&V Charge Time	14.1515001

A.2 Comments

Preferred roll angle of 283 +/- 10 degrees not met. Roll angle is 265.6 degrees.