

V&V Reference Report

L2 ASCDS Version : 8.4.3

Observation 7185 - L2 Version 2
Chandra X-Ray Center

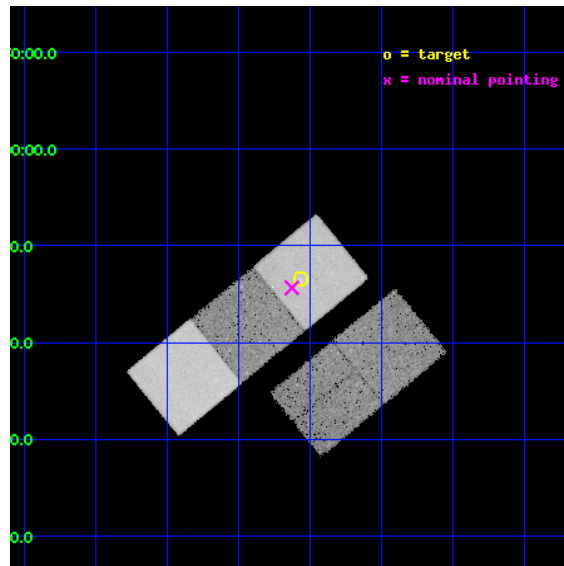
L2 Processing Date : Mar 17 2012

Contents

1	Front	2
2	OBI	3
2.1	OBI	3
2.1.1	Images	3
2.1.2	Bias	3
2.1.3	Parameters	4
2.1.4	Events	4
2.2	Compared Parameters	5
2.3	Aspect	6
2.4	Star Slots	9
2.4.1	Slot 3	9
2.4.2	Slot 4	10
2.4.3	Slot 5	11
2.4.4	Slot 6	12
2.4.5	Slot 7	13
2.5	FID Slots	14
2.5.1	Slot 0	14
2.5.2	Slot 1	15
2.5.3	Slot 2	16
A	Summary	17
A.1	Status	17
A.2	Comments	17

1 Front

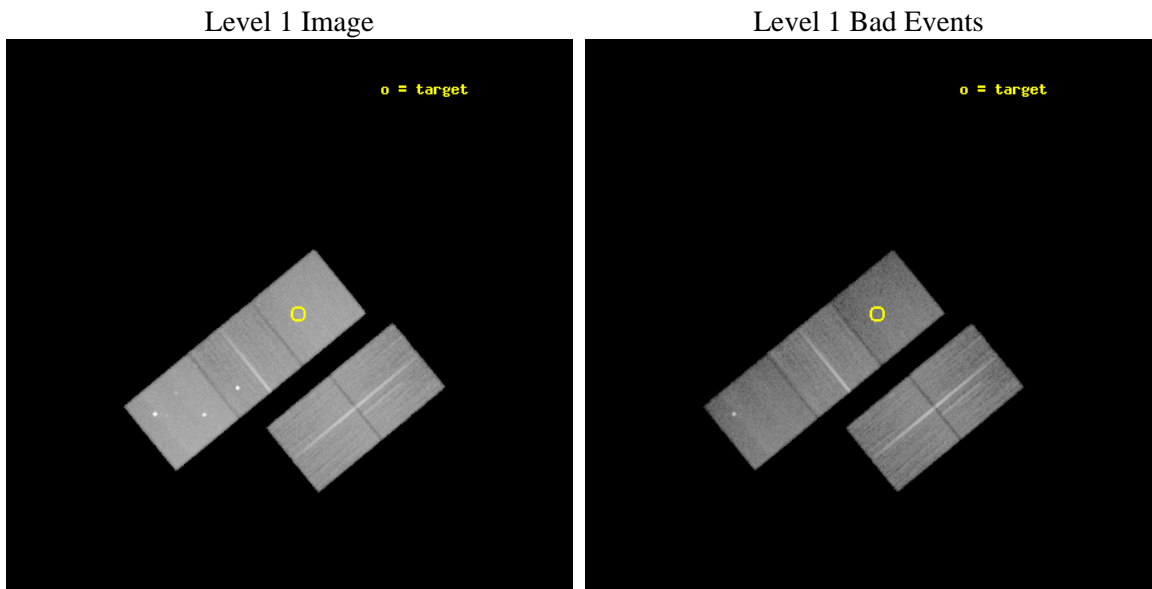
seq_num	800500	Sequence number
obs_id	7185	Observation id
title	A detailed study of a z>1 galaxy cluster	Proposal title
observer	Dr Laurence Jones	Principal investigator
object	XLSSJ022404.0-041328	Source name
dtcycle	0	
cycle	P	events from which exps? Prim/Second/Both
ra_targ	36.017083	Observer's specified target RA [deg]
dec_targ	-4.224694	Observer's specified target Dec [deg]
ra_nom	36.032032904791	Nominal RA [deg]
dec_nom	-4.2391604307558	Nominal Dec [deg]
roll_nom	320.6411139251	Nominal Roll [deg]
revision	2	Processing version of data
ontime	33380.799935788	Sum of GTIs [s]
livetime	32944.655210039	Livetime [s]
ontime2	33380.799935788	Sum of GTIs [s]
ontime3	33377.658945531	Sum of GTIs [s]
ontime5	33380.799935788	Sum of GTIs [s]
ontime6	33380.799935788	Sum of GTIs [s]
ontime7	33380.799935788	Sum of GTIs [s]
l2events	300720	Number of level 2 events



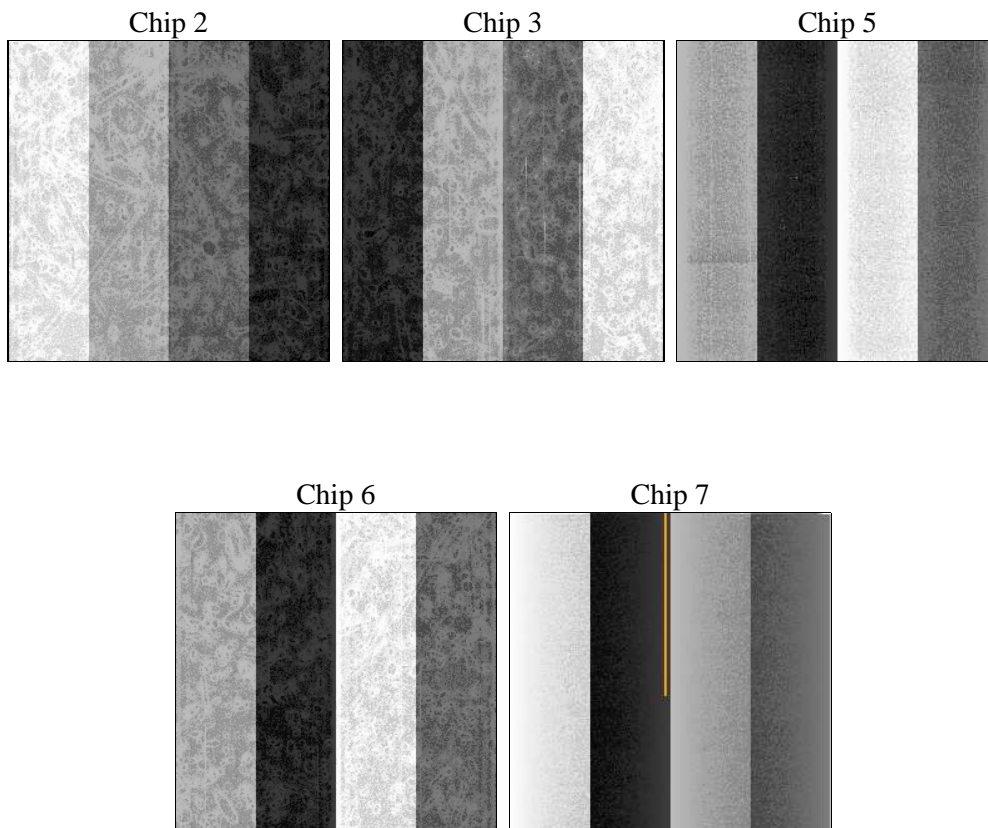
2 OBI

2.1 OBI

2.1.1 Images



2.1.2 Bias



2.1.3 Parameters

obi_num	0	Obi number	sched_exp_time	33200.000000	[s] Scheduled observation exposure time
ascdsver	8.4.3	Processing system revision	ontime	33380.799935788	Sum of GTIs [s]
caldbver	4.4.8	 	ontime2	33380.799935788	Sum of GTIs [s]
date	2012-03-17T03:14:55	Date and time of file creation	ontime3	33377.658945531	Sum of GTIs [s]
revision	2	Processing version of data	ontime5	33380.799935788	Sum of GTIs [s]
			ontime6	33380.799935788	Sum of GTIs [s]
			ontime7	33380.799935788	Sum of GTIs [s]
			l1events	1264654	Number of level 1 events

2.1.4 Events

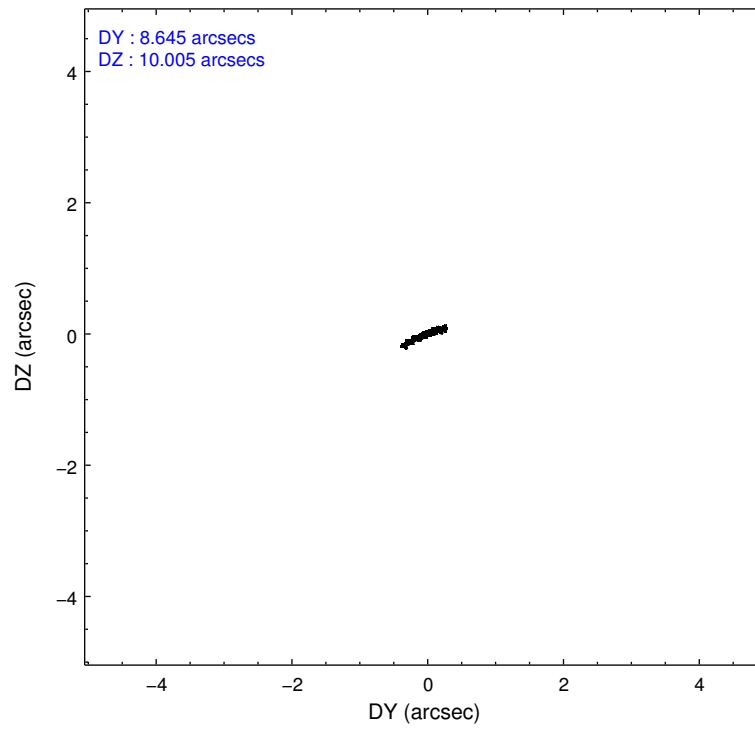
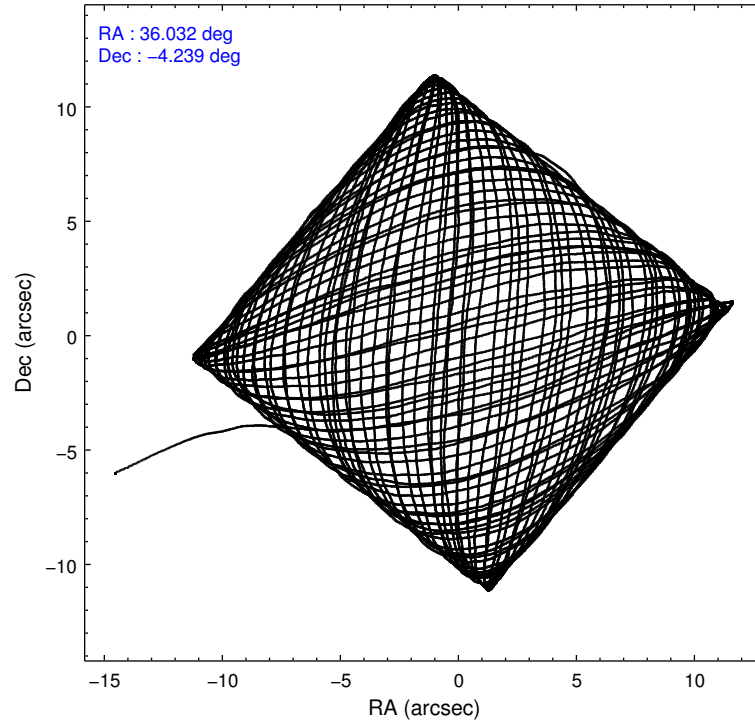
	ccd 2	ccd 3	ccd 5	ccd 6	ccd 7
level 1 events	233437	221784	317736	240020	251677
rejected events	212782	201463	161112	207563	140308
rejected %	91%	90%	50%	86%	55%

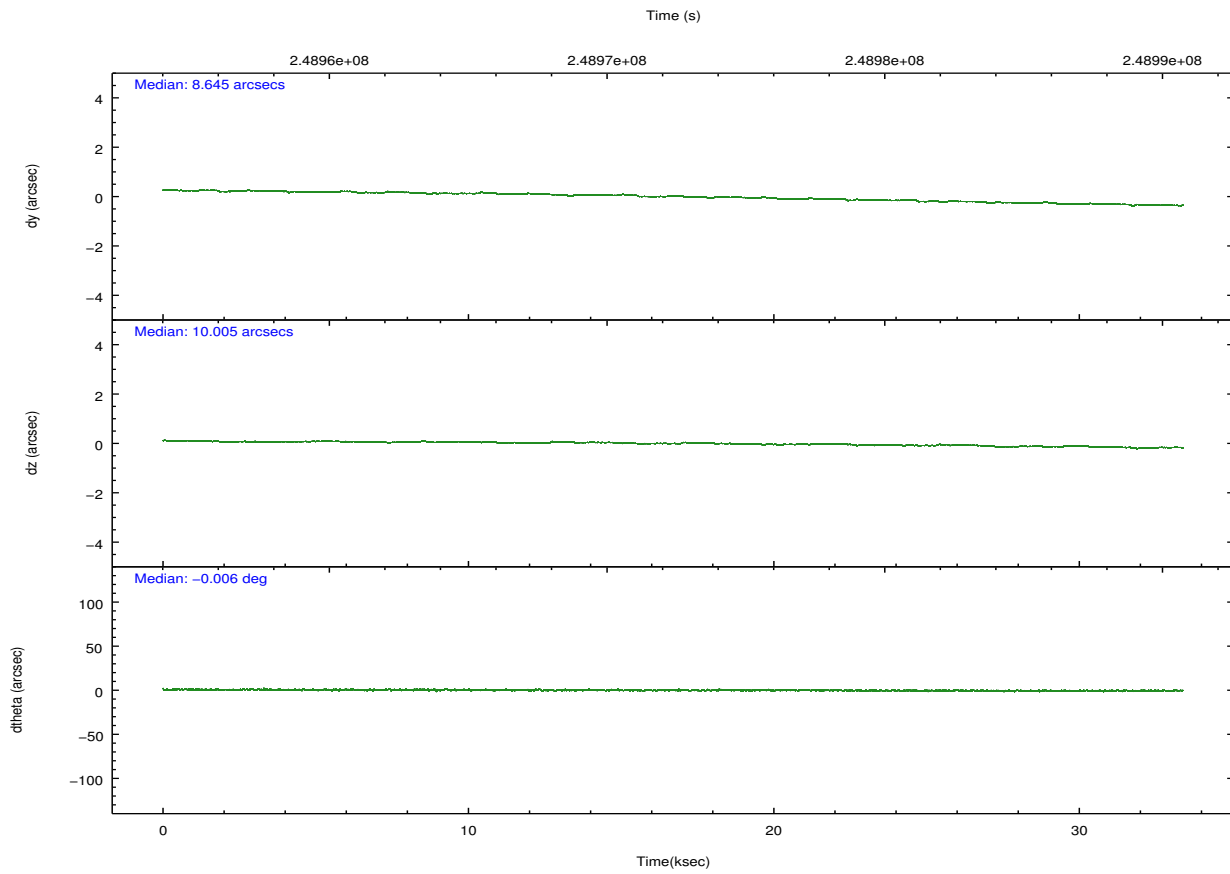
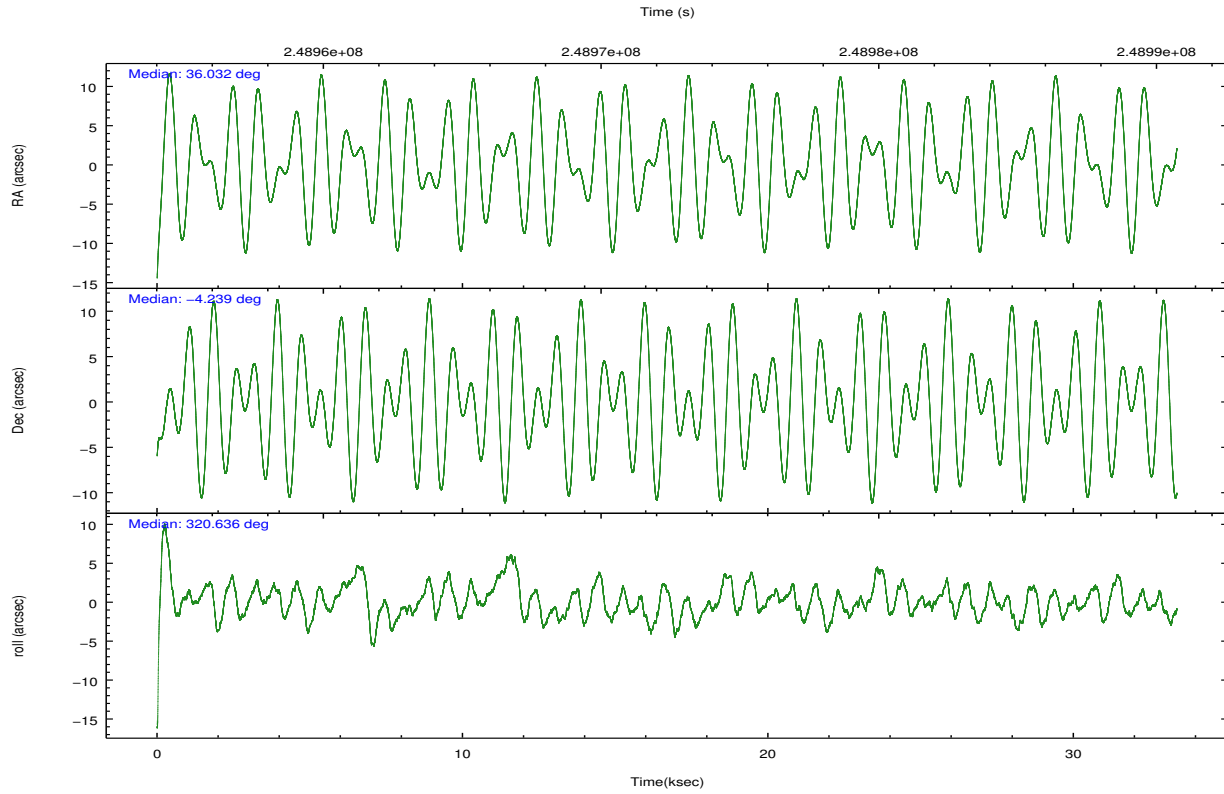
	ccd 2	ccd 3	ccd 5	ccd 6	ccd 7
grade 0 events	7436	7184	17072	17890	9850
	3%	3%	5%	7%	3%
grade 1 events	116	137	2237	151	222
	0%	0%	0%	0%	0%
grade 2 events	4931	4457	50230	4956	23024
	2%	2%	15%	2%	9%
grade 3 events	2330	2467	6639	2709	10588
	0%	1%	2%	1%	4%
grade 4 events	2405	2402	6379	2480	10645
	1%	1%	2%	1%	4%
grade 5 events	6898	8905	24844	9152	27057
	2%	4%	7%	3%	10%
grade 6 events	3929	4151	79023	4978	59081
	1%	1%	24%	2%	23%
grade 7 events	205392	192081	131312	197704	111210
	87%	86%	41%	82%	44%

2.2 Compared Parameters

Parameter	Planned	Actual	Parameter	Planned	Actual
Instrument	ACIS	ACIS	Obspar format version number	7	7
Detector	ACIS-23567	ACIS-23567	Obspar file type	PREDICTED	ACTUAL
Grating	NONE	NONE	Obspar update status	NONE	UPDATED
Data mode	VFAINT	VFAINT	Number of optional ACIS chips dropped	0	0
Observation mode	POINTING	POINTING	On-chip summing requested	N	N
[deg] Pointing RA	36.005020	36.03203290479074	Subarray requested	NONE	NONE
[deg] Pointing Dec	-4.235083	-4.239160430755788	Alternating exposures requested	N	N
[deg] Pointing Roll	320.482492	320.641113925099	[s] Primary exposure time	0.000000	3.1
[mm] SIM focus pos	-0.684267	-0.6828225247311905			
[mm] SIM defocus	0	0.001444936568705701			
[mm] SIM translation stage pos	-190.132523	-190.1400660498719			
[mm] SIM translation stage offset	0	0.00754346686406393			
[s] Observation start time (MET)	248955871.184000	248954445.74128			
Observation start date	2005-11-21T10:23:27	2005-11-21T10:00:45			
[s] Observation end time (MET)	248989071.184000	248990243.86793			
Observation end date	2005-11-21T19:36:47	2005-11-21T19:57:23			
Read mode	TIMED	TIMED			

2.3 Aspect



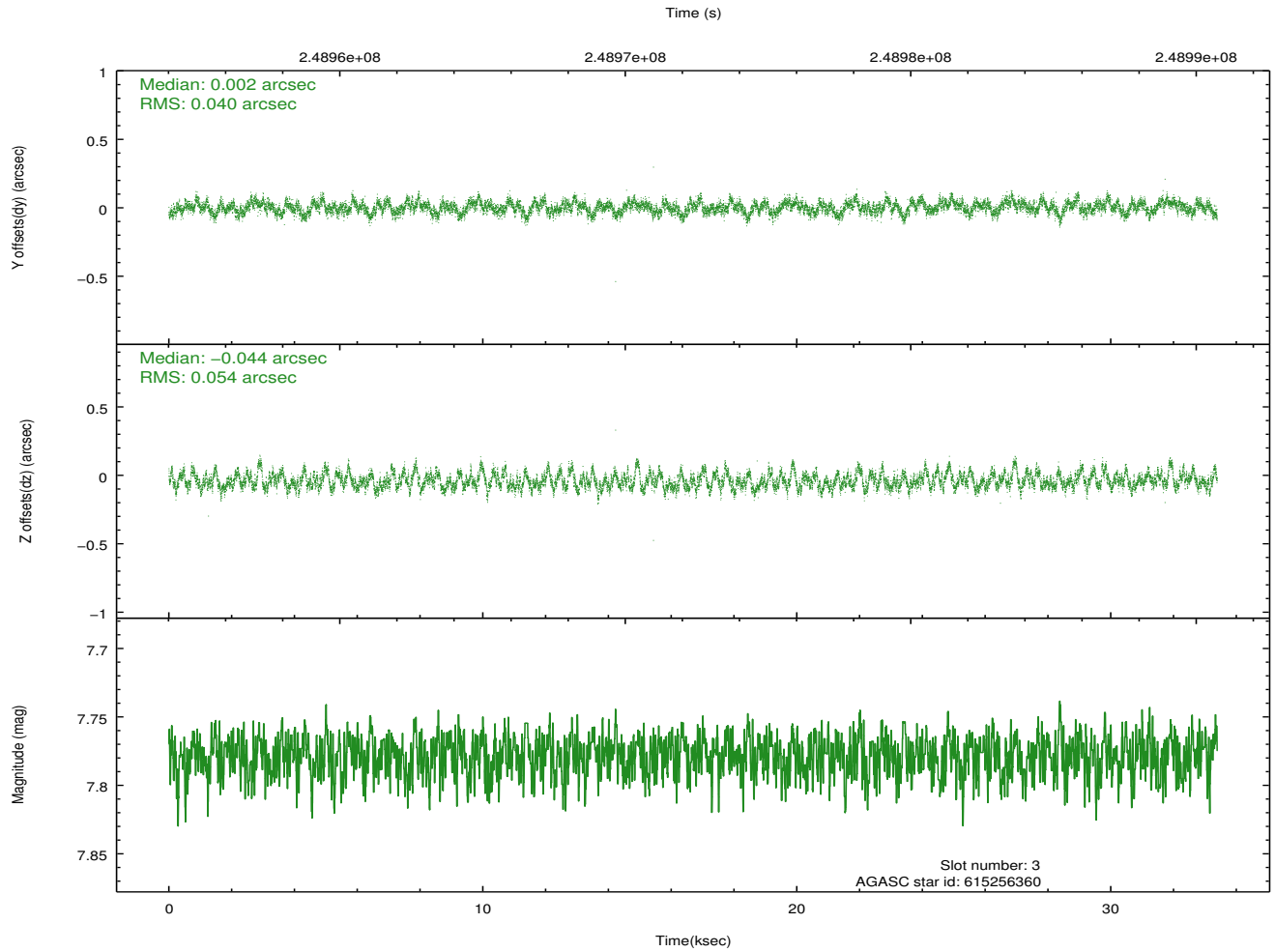
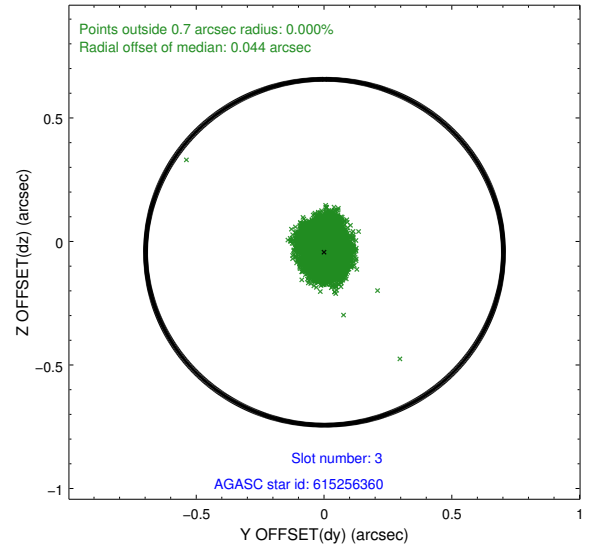
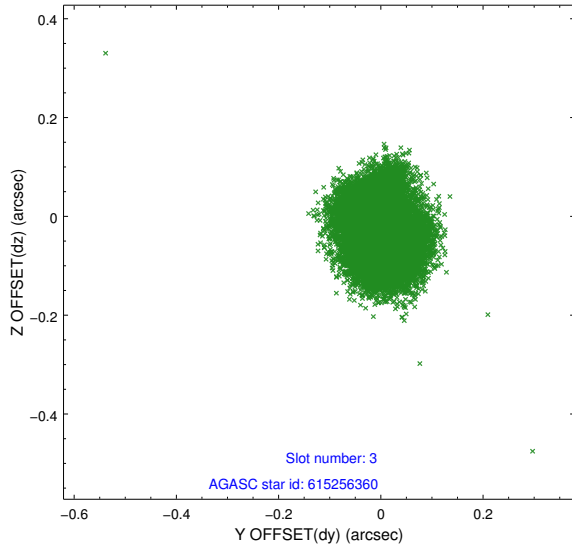


Slot Statistics

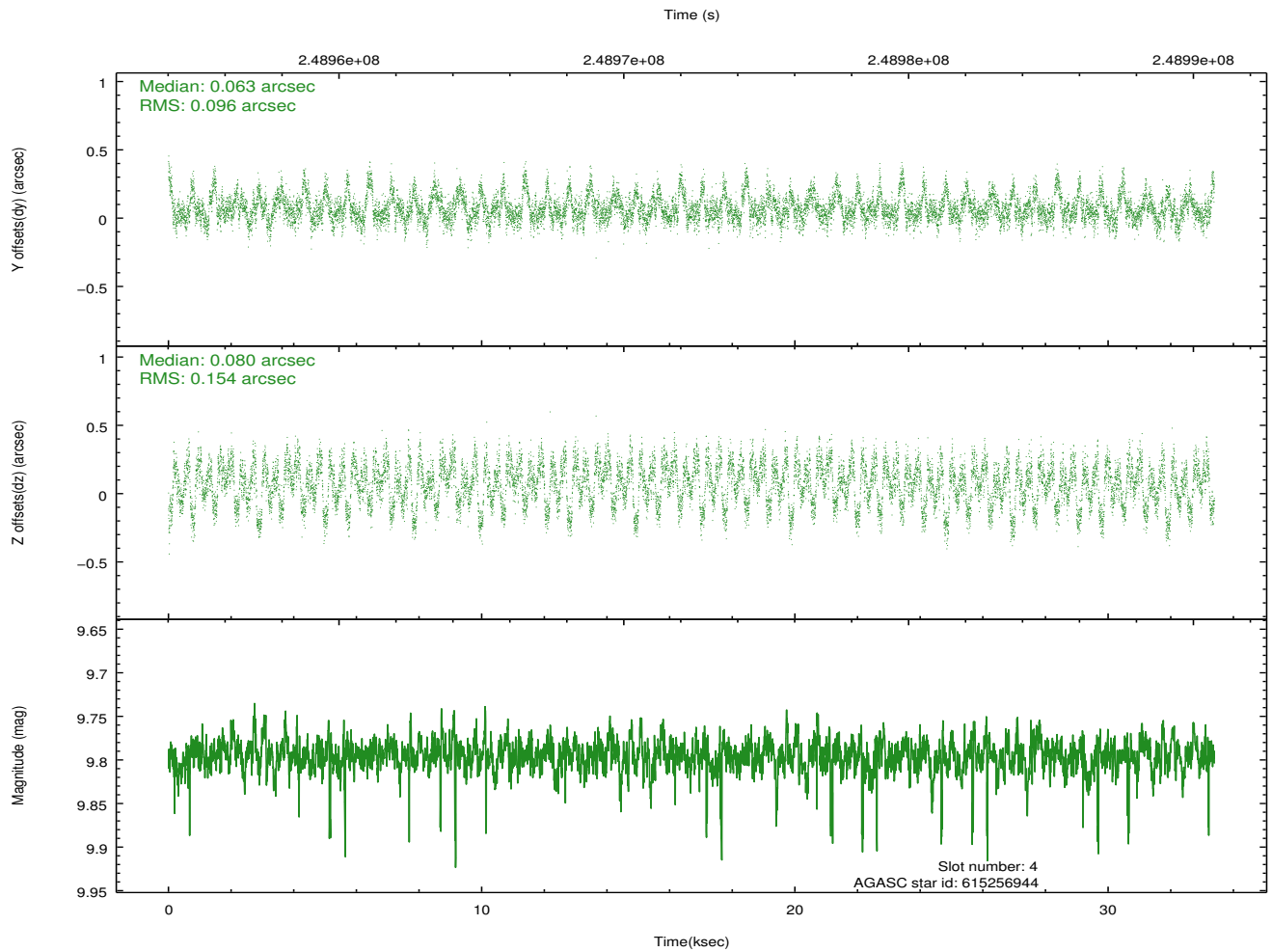
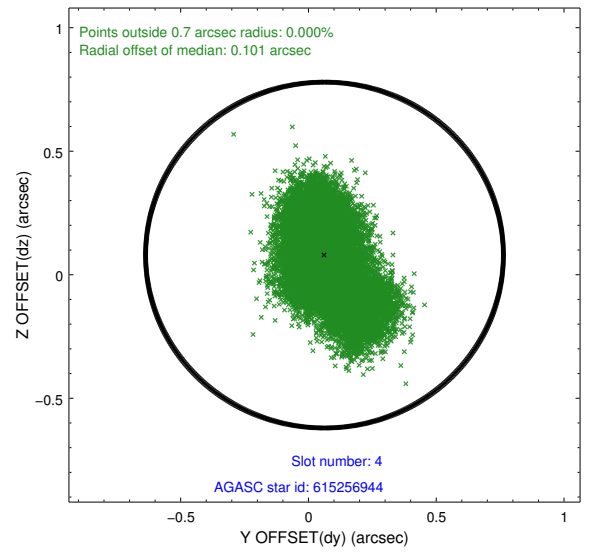
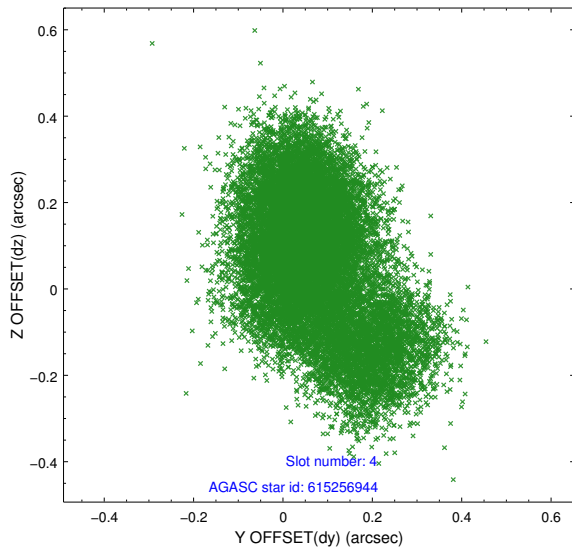
slot	status	id	mag	n_pts	med_dy	med_dz	dr1	dr2	ra	dec	mean_y	mean_z
0	FID	ACIS-S-1	7.19	8144	0.048	-0.040	0.009	0.017	0.000000	0.000000	934.67	-1726.90
1	FID	ACIS-S-5	7.24	8144	-0.127	0.022	0.009	0.014	0.000000	0.000000	-1814.48	170.65
2	FID	ACIS-S-6	7.36	8143	0.056	0.029	0.009	0.014	0.000000	0.000000	400.17	814.69
3	GUIDE	615256360	7.78	16287	0.002	-0.044	0.071	0.114	36.286608	-3.875886	-42.39	1641.37
4	GUIDE	615256944	9.80	16262	0.063	0.080	0.192	0.326	35.497386	-4.510719	-773.37	-1924.89
5	GUIDE	615260160	9.72	16278	-0.037	0.041	0.101	0.165	35.737387	-3.921265	-1459.86	259.44
6	GUIDE	615260392	7.64	16288	-0.098	0.023	0.087	0.141	35.914136	-3.376682	-2218.79	2176.21
7	GUIDE	615254552	9.20	16272	0.060	-0.089	0.117	0.183	36.600600	-3.877551	831.50	2353.84

2.4 Star Slots

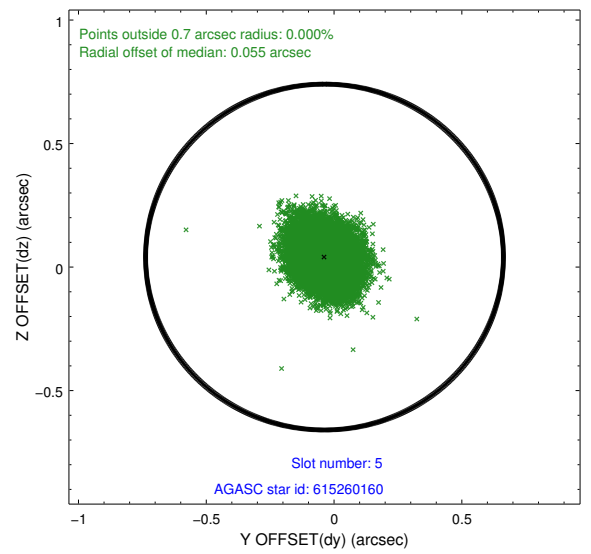
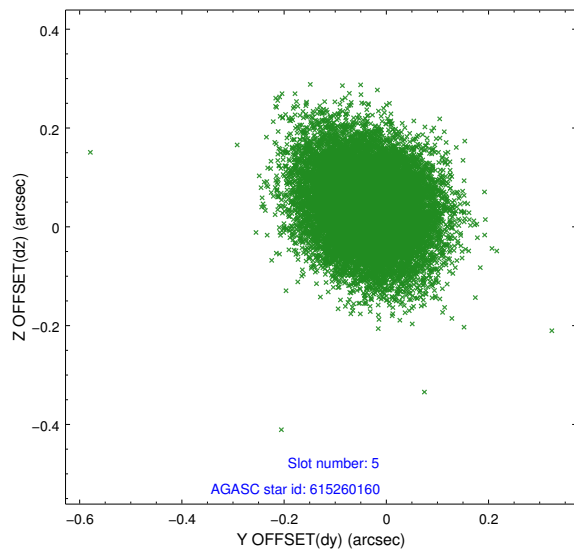
2.4.1 Slot 3



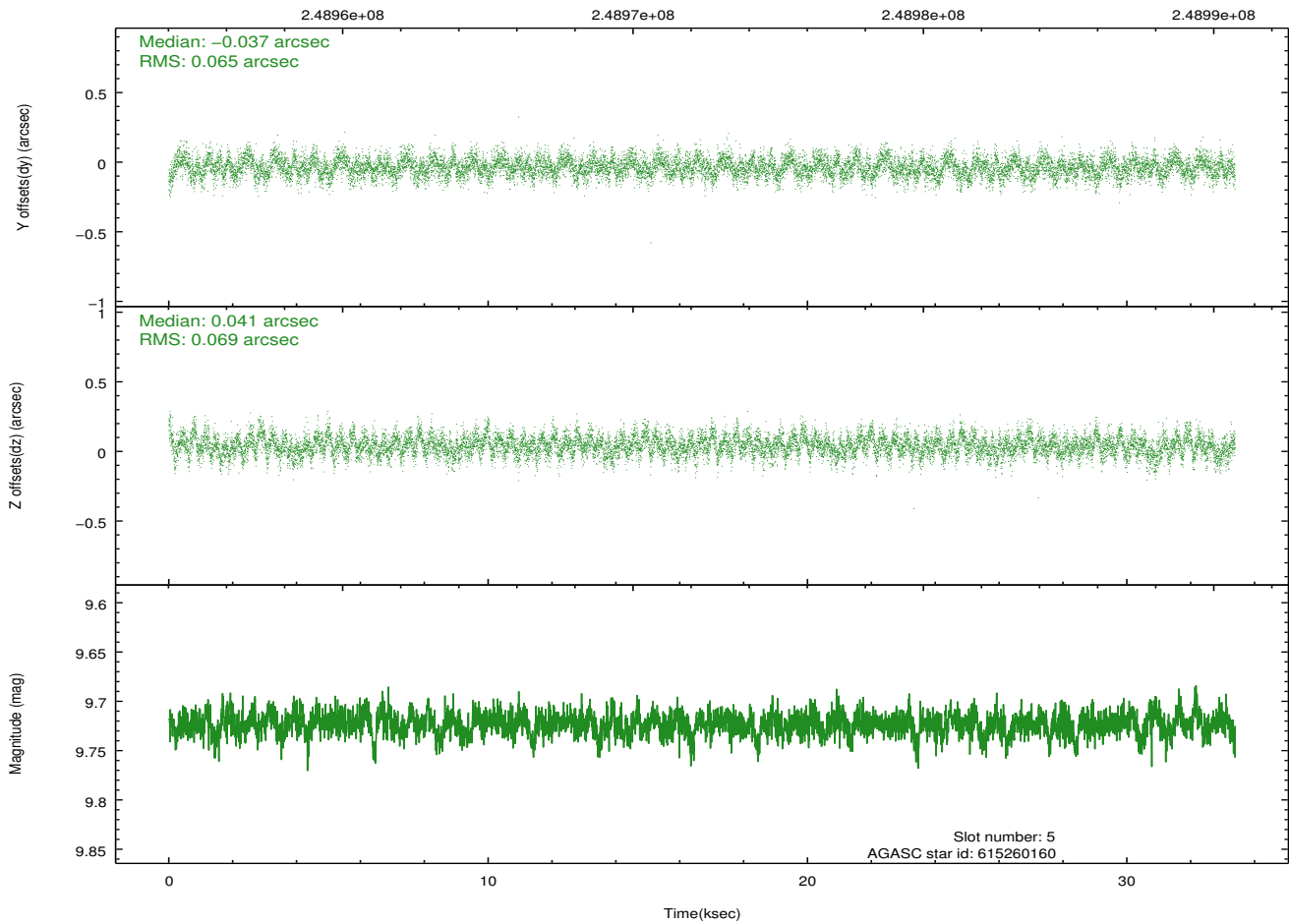
2.4.2 Slot 4



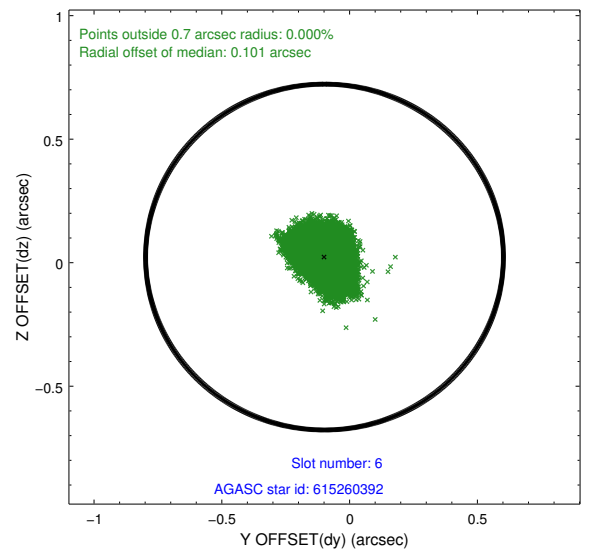
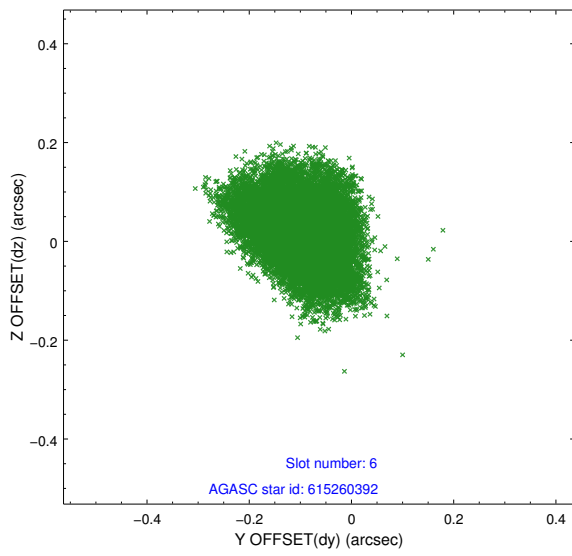
2.4.3 Slot 5



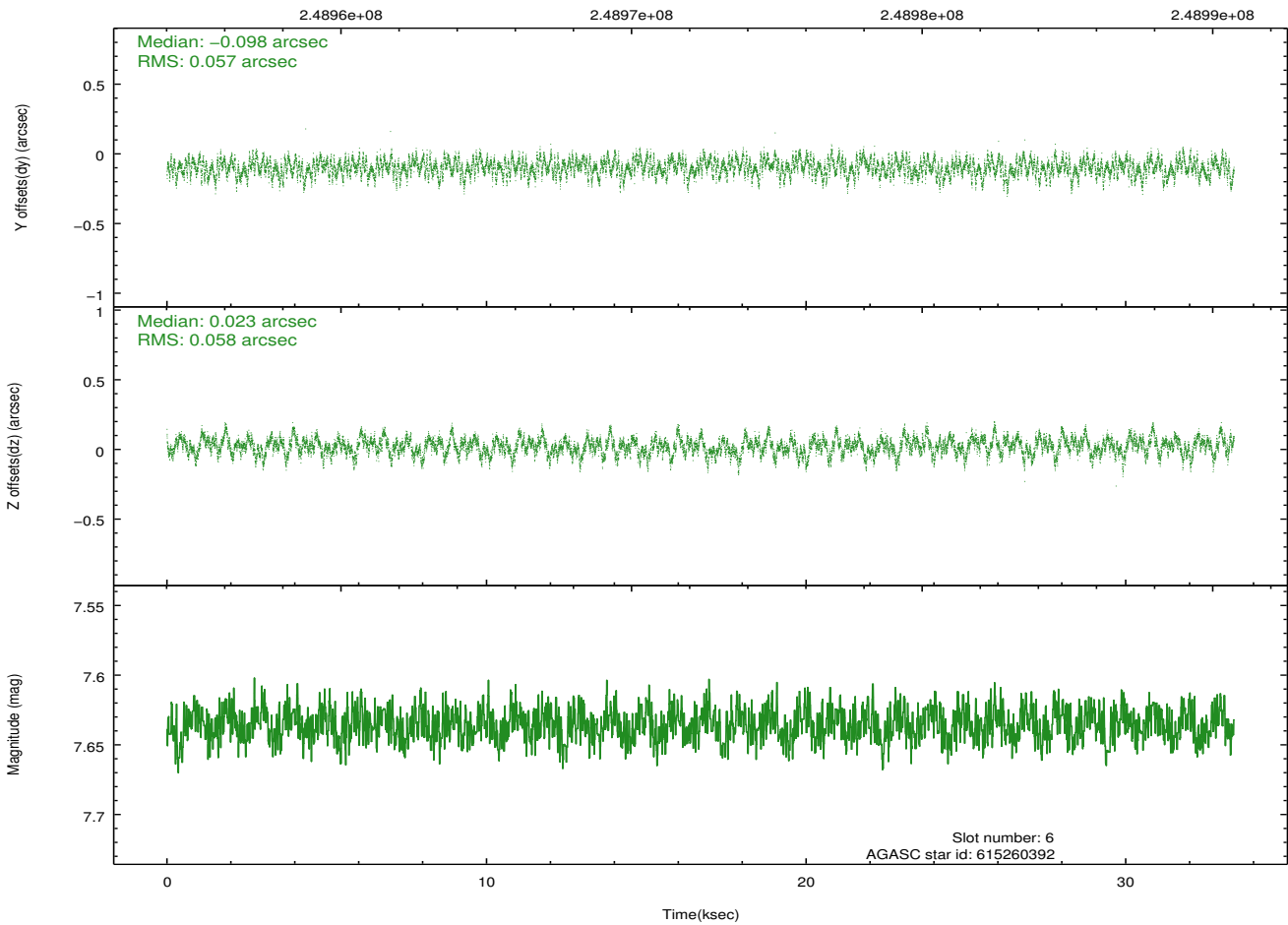
Time (s)



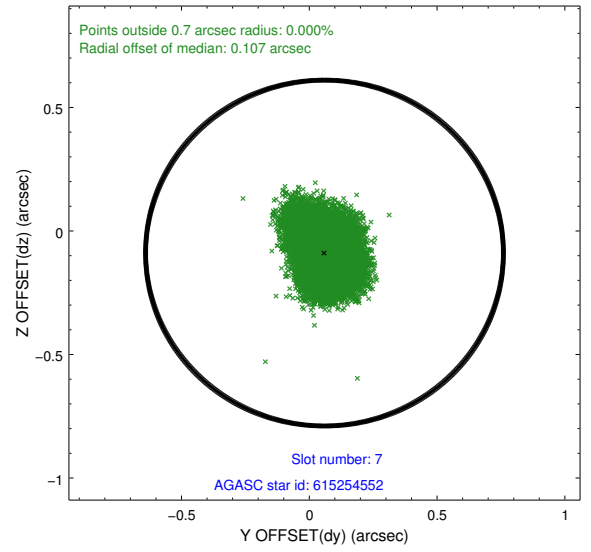
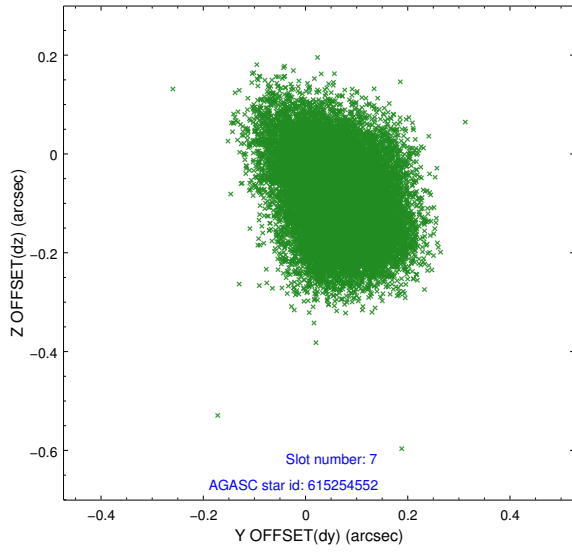
2.4.4 Slot 6



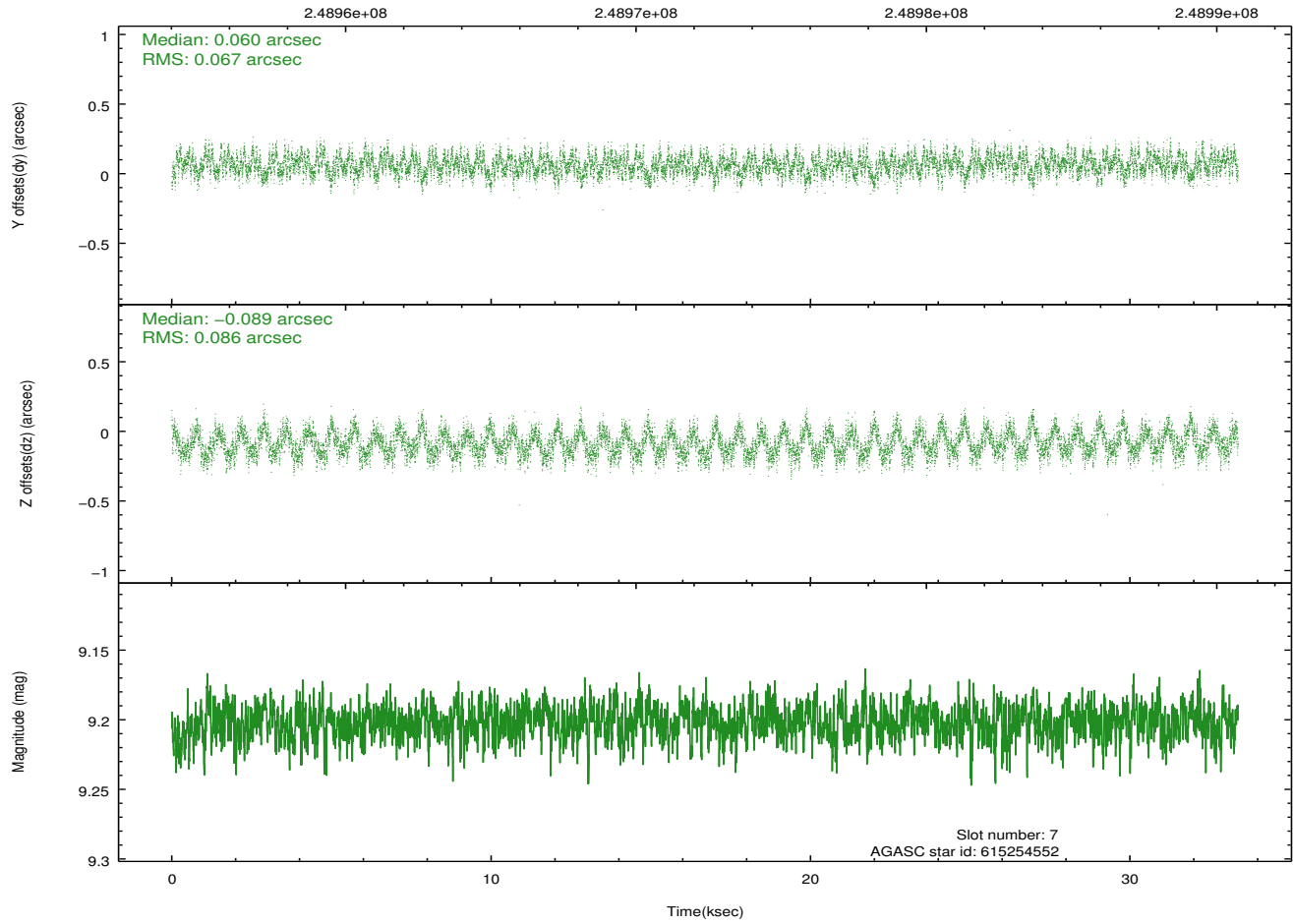
Time (s)



2.4.5 Slot 7

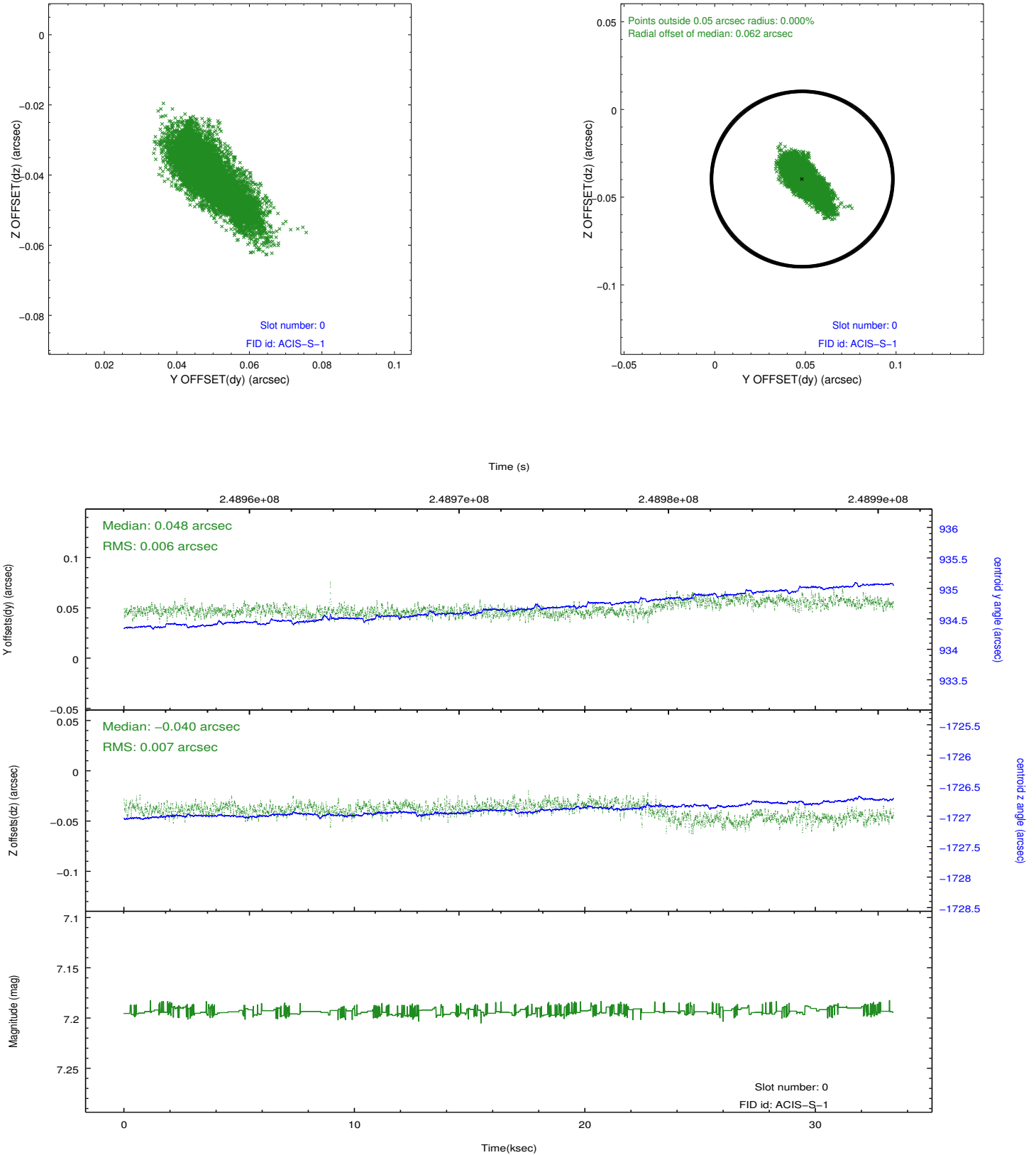


Time (s)

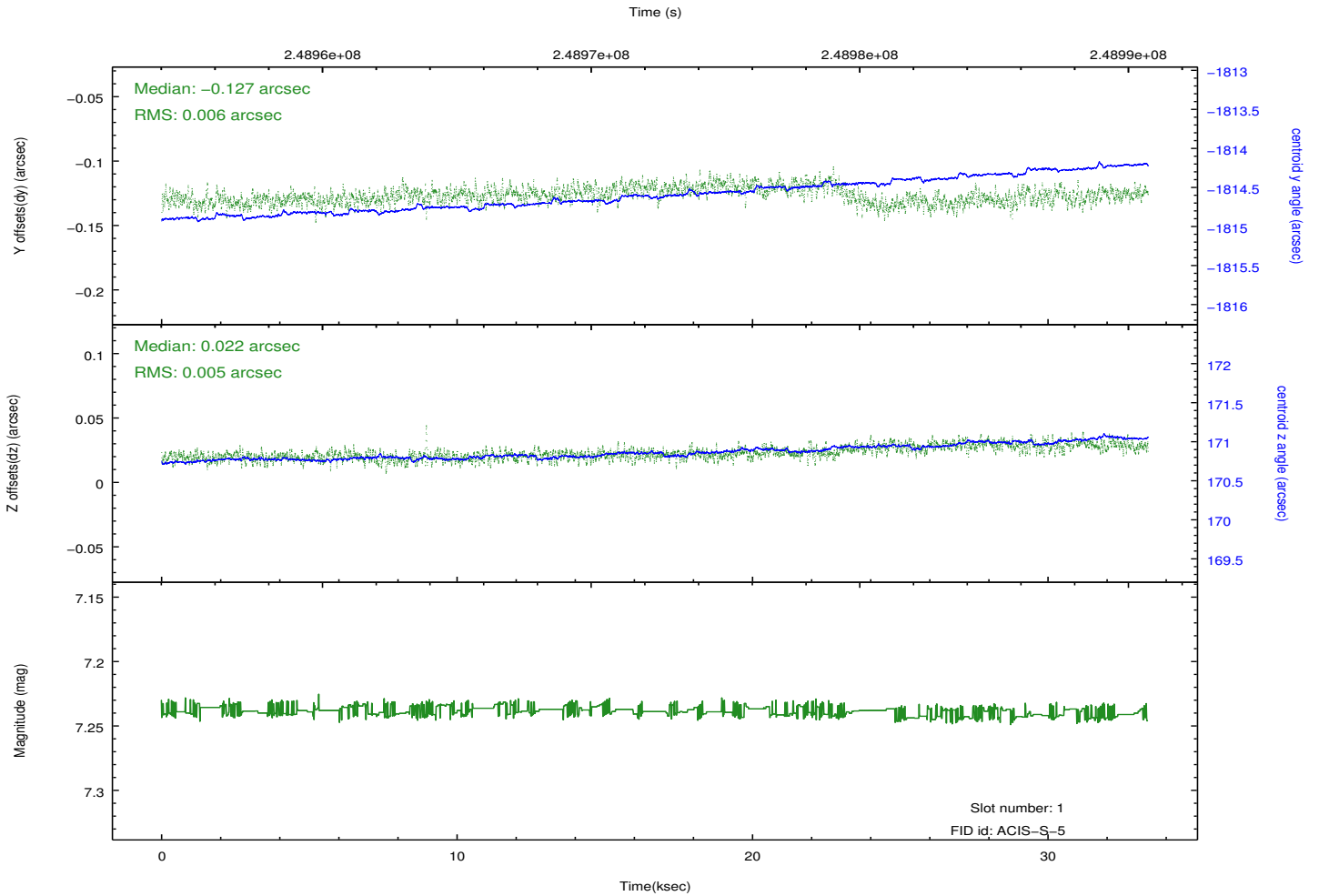
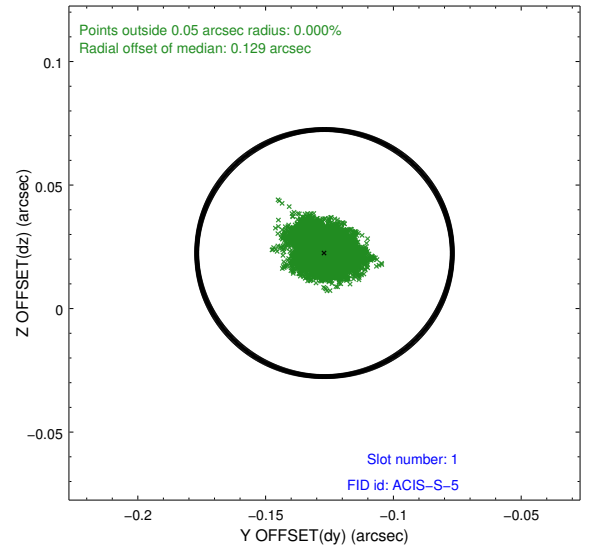
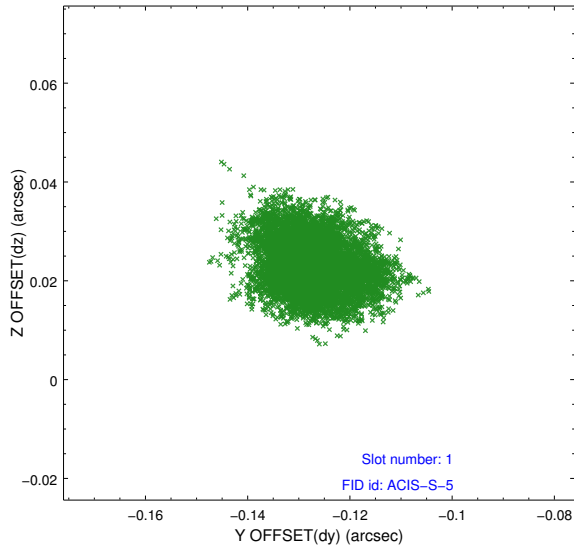


2.5 FID Slots

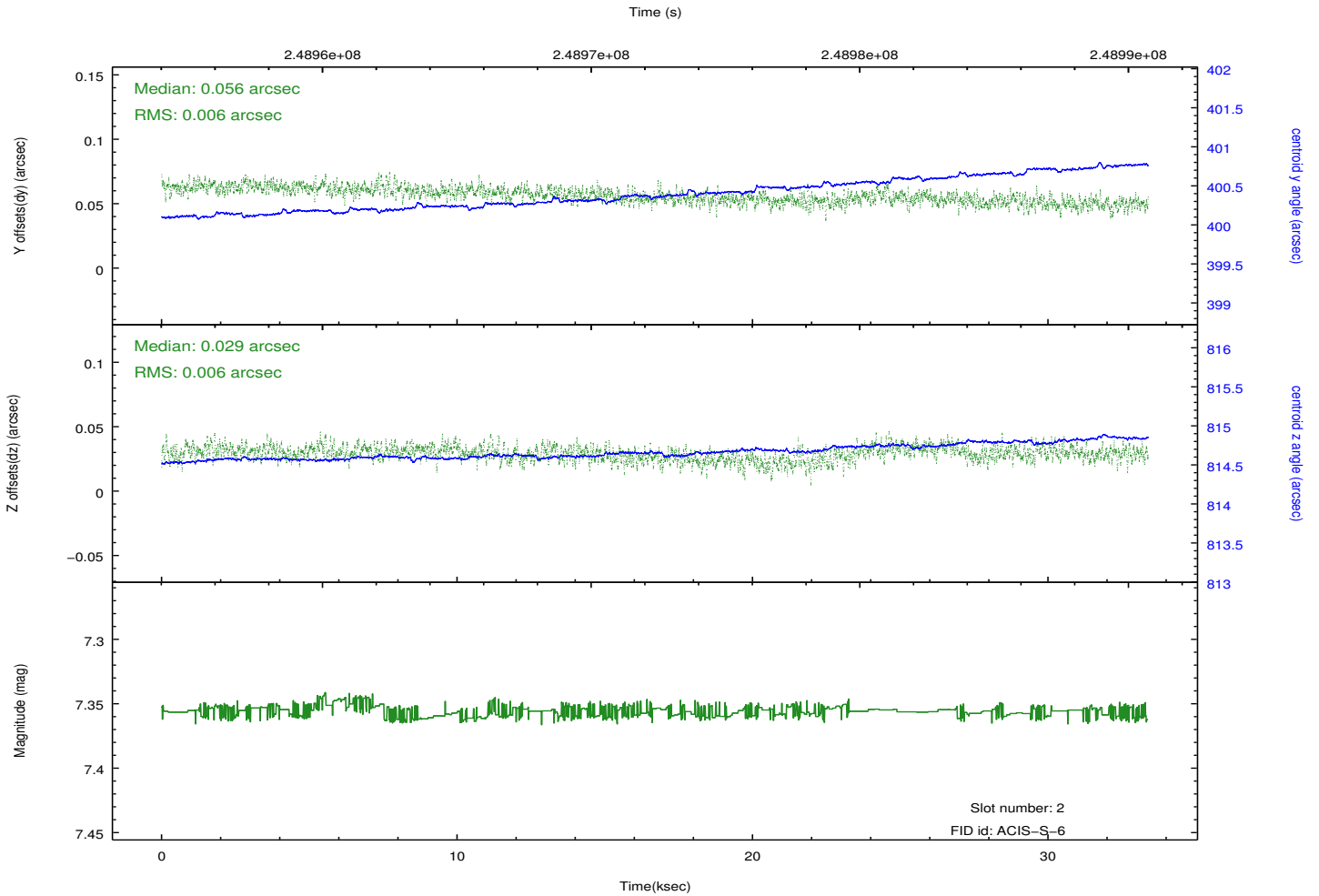
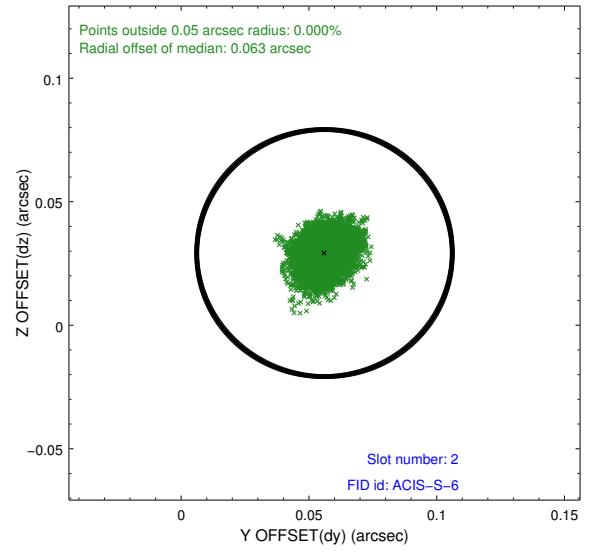
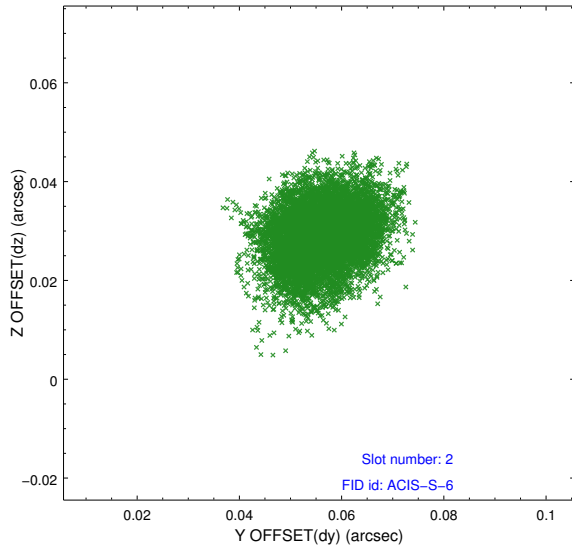
2.5.1 Slot 0



2.5.2 Slot 1



2.5.3 Slot 2



A Summary

A.1 Status

V&V Scientist	Beth Sundheim
V&V Date (YYYY-MM-DD)	2012.03.19
V&V Edition	1
V&V Disposition and Status	OK
V&V Charge Time	33.38079

A.2 Comments

Joint proposal with XMM.