

V&V Reference Report

L2 ASCDS Version : 8.1.2

Observation 725 - L2 Version 5
Chandra X-Ray Center

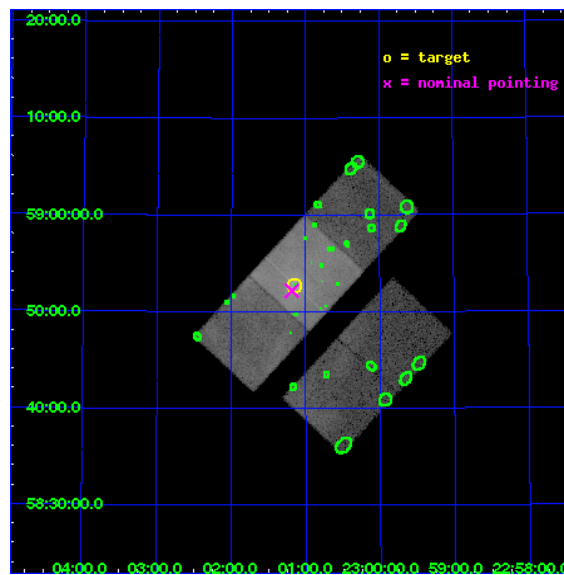
L2 Processing Date : Dec 2 2009

Contents

1	Front	2
2	OBI	3
2.1	OBI	3
2.1.1	Images	3
2.1.2	Bias	3
2.1.3	Parameters	4
2.1.4	Events	4
2.2	Compared Parameters	5
2.3	Aspect	6
2.4	Star Slots	9
2.4.1	Slot 3	9
2.4.2	Slot 4	10
2.4.3	Slot 5	11
2.4.4	Slot 6	12
2.4.5	Slot 7	13
2.5	FID Slots	14
2.5.1	Slot 0	14
2.5.2	Slot 1	15
2.5.3	Slot 2	16
3	Point Sources	17
A	Summary	18
A.1	Status	18
A.2	Comments	18

1 Front

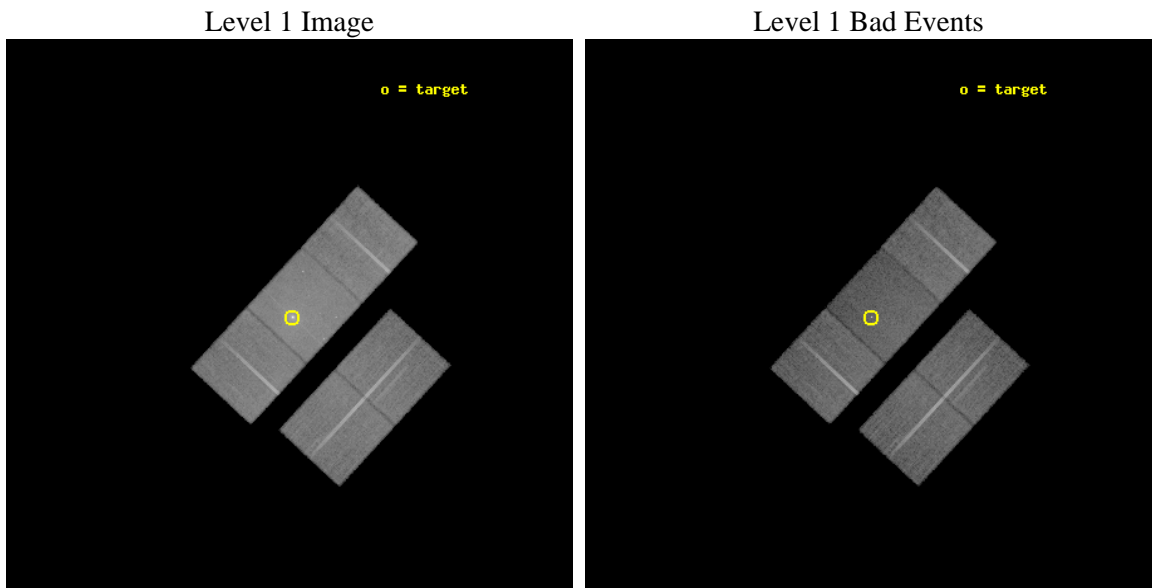
seq_num	500021	Sequence number
obs_id	725	Observation id
title	A STUDY OF ANOMALOUS X-RAY PULSARS	Proposal title
observer	Dr. Chryssa Kouveliotou	Principal investigator
object	1E 2259+586	Source name
dtcycle	0	
cycle	P	events from which exps? Prim/Second/Both
ra_targ	345.285833	Observer's specified target RA
dec_targ	58.878056	Observer's specified target Dec
ra_nom	345.2962941797	Nominal RA
dec_nom	58.869430457078	Nominal Dec
roll_nom	312.79586797027	Nominal Roll
revision	5	Processing version of data
ontime	19132.290213801	Sum of GTIs [s]
livetime	18890.025635032	Livetime [s]
ontime2	19132.249173798	Sum of GTIs [s]
ontime3	19128.926133581	Sum of GTIs [s]
ontime6	19132.208133802	Sum of GTIs [s]
ontime7	19132.290213801	Sum of GTIs [s]
ontime8	19132.126053803	Sum of GTIs [s]
l2events	245306	Number of level 2 events



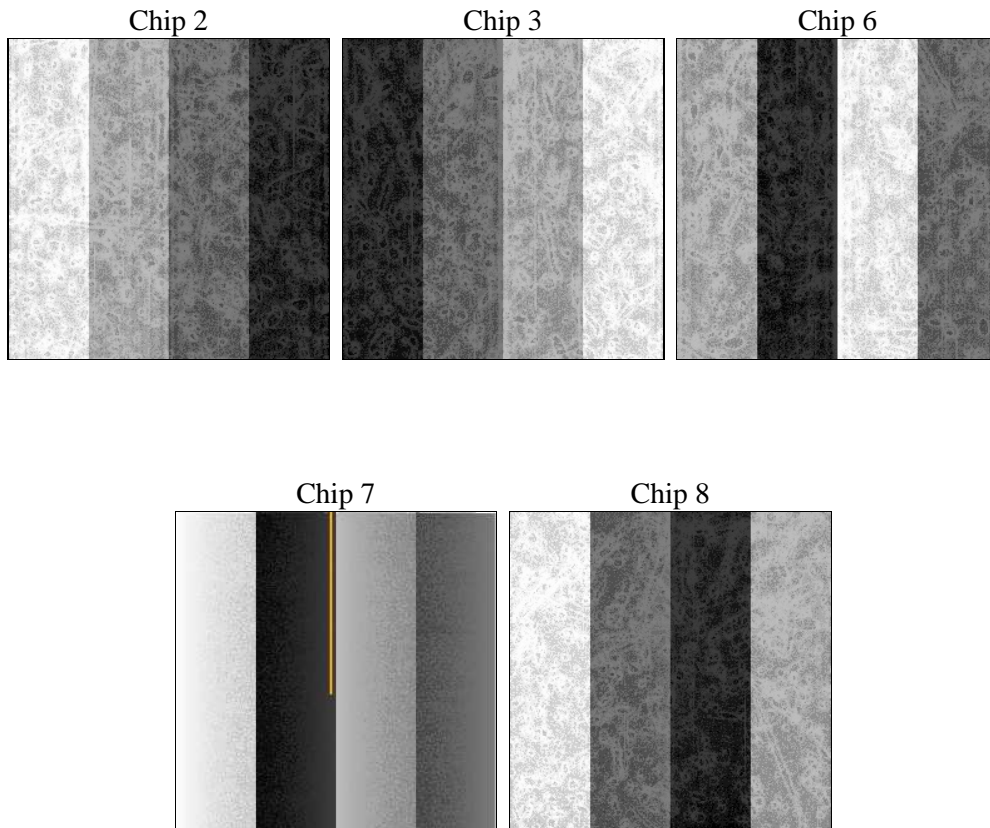
2 OBI

2.1 OBI

2.1.1 Images



2.1.2 Bias



2.1.3 Parameters

obi_num	0	Obi number	sched_exp_time	20000.000000	Scheduled observation exposure time
ascdsver	8.1.2	ASCDS version number	ontime	19132.290213801	Sum of GTIs [s]
caldbver	4.1.4	 	ontime2	19132.249173798	Sum of GTIs [s]
date	2009-12-02T10:56:40	Date and time of file creation	ontime3	19128.926133581	Sum of GTIs [s]
revision	3	Processing version of data	ontime6	19132.208133802	Sum of GTIs [s]
			ontime7	19132.290213801	Sum of GTIs [s]
			ontime8	19132.126053803	Sum of GTIs [s]
			l1events	984419	Number of level 1 events

2.1.4 Events

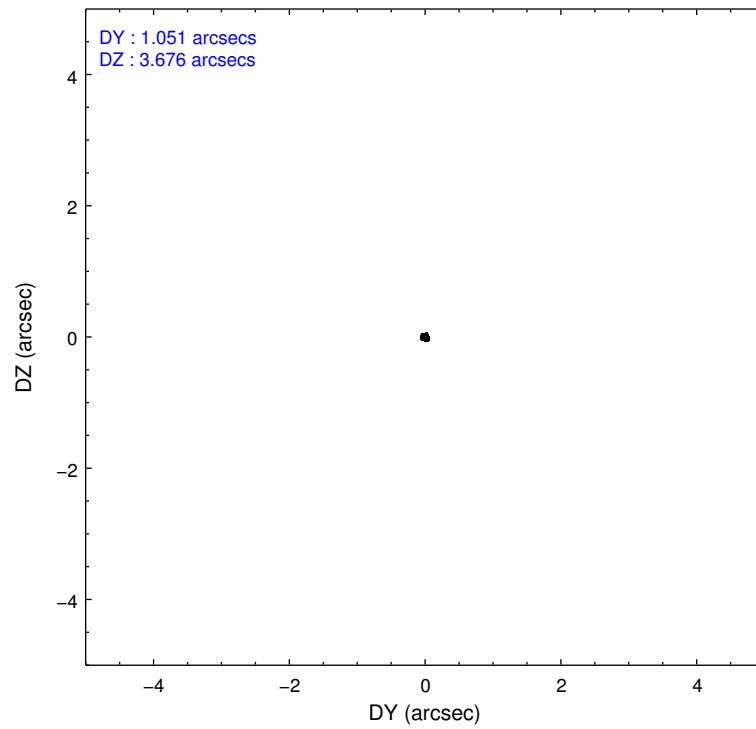
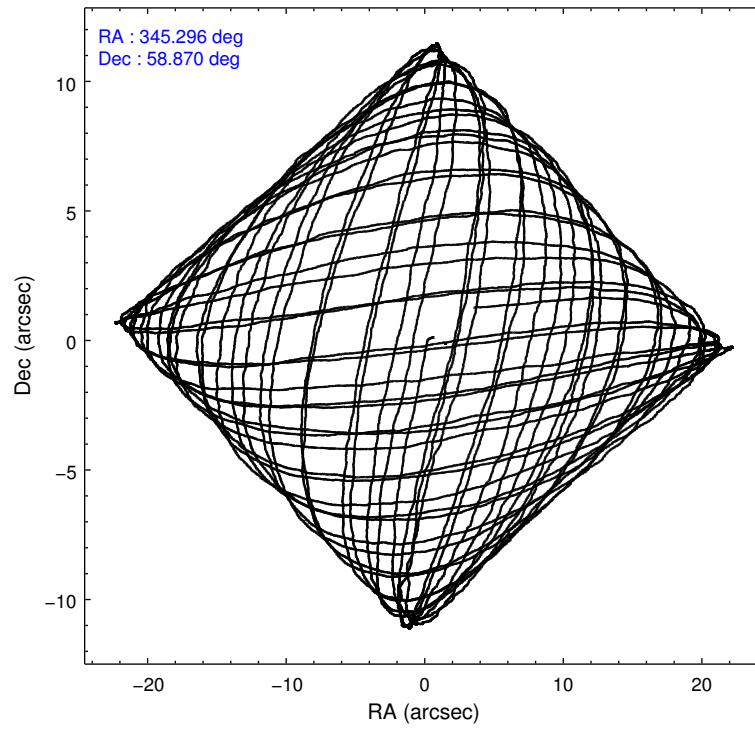
	ccd 2	ccd 3	ccd 6	ccd 7	ccd 8
level 1 events	177205	162351	194986	249808	200069
rejected events	152009	144875	147748	110086	162228
rejected %	85%	89%	75%	44%	81%

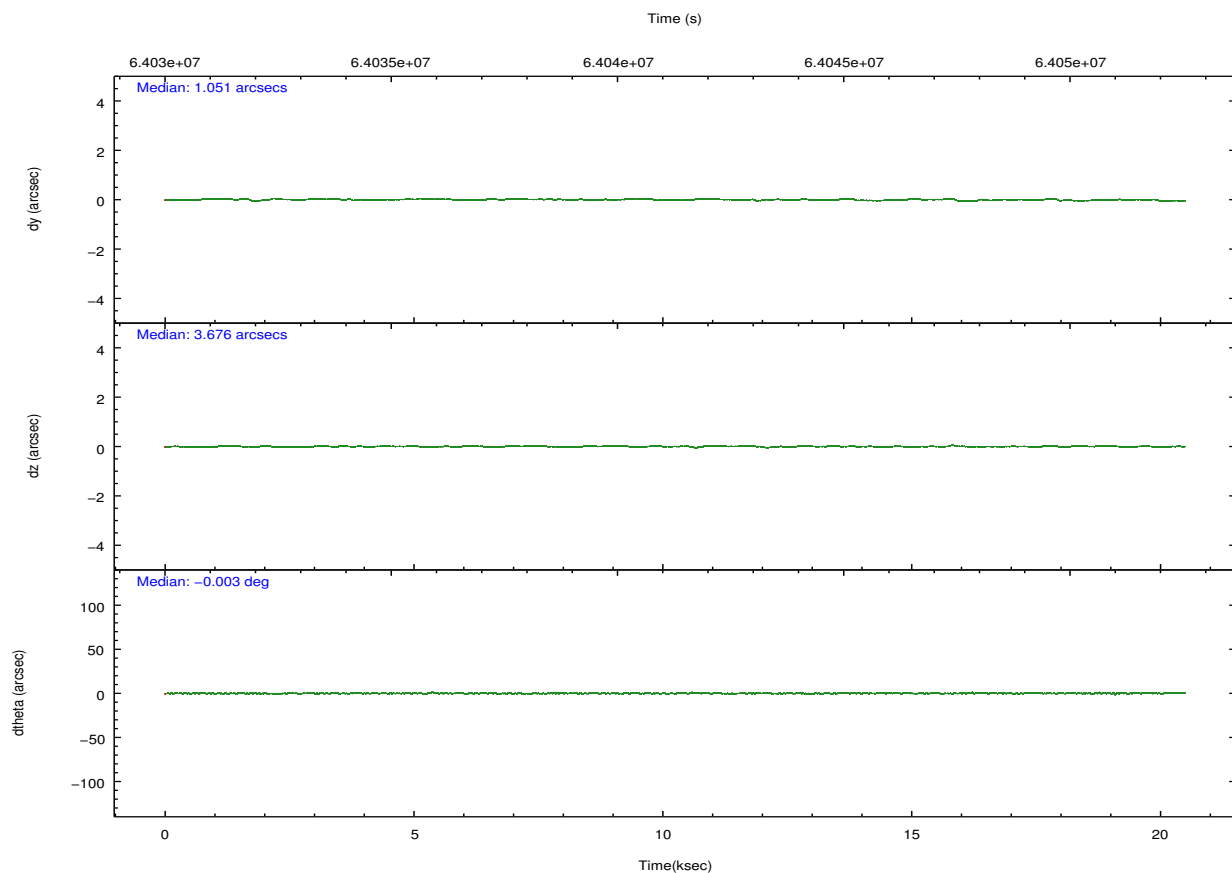
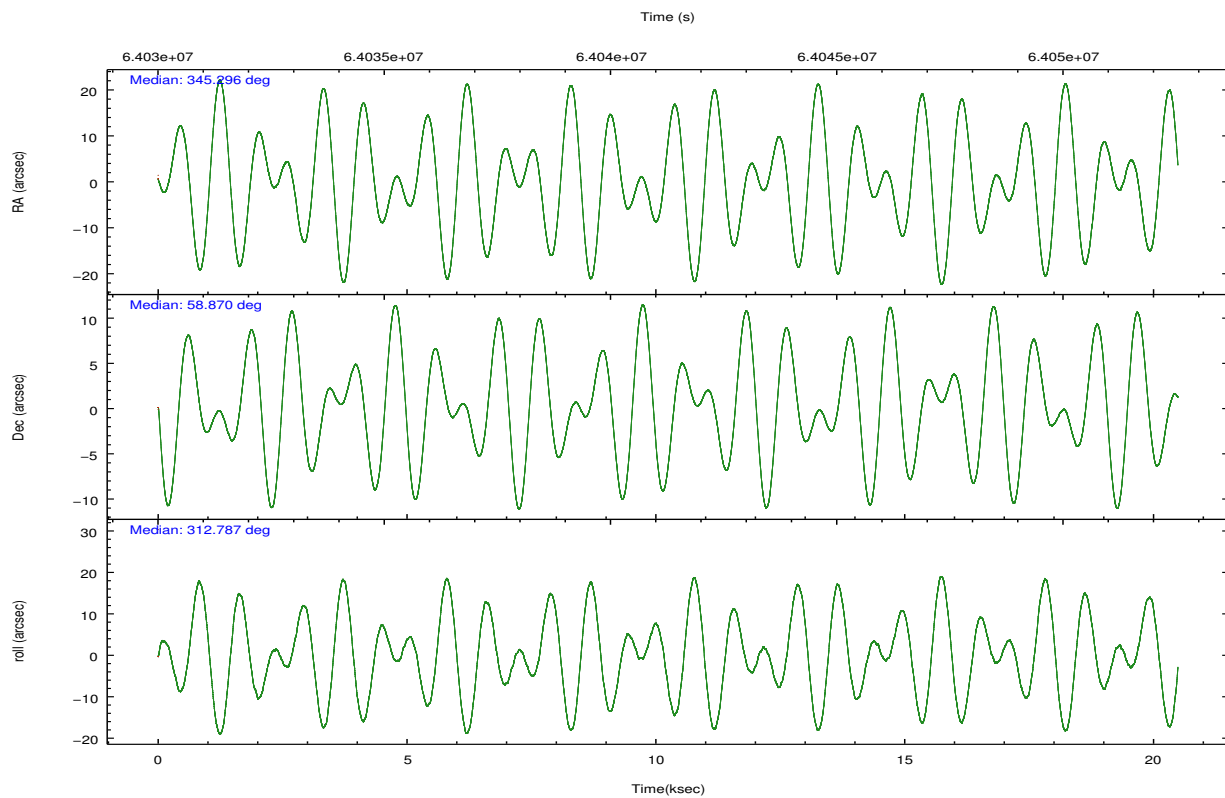
	ccd 2	ccd 3	ccd 6	ccd 7	ccd 8
grade 0 events	11834	5084	26955	22600	11947
	6%	3%	13%	9%	5%
grade 1 events	47	27	86	207	77
	0%	0%	0%	0%	0%
grade 2 events	7290	6569	12493	33736	11176
	4%	4%	6%	13%	5%
grade 3 events	1215	1015	1579	12541	2761
	0%	0%	0%	5%	1%
grade 4 events	1159	960	1489	11619	2604
	0%	0%	0%	4%	1%
grade 5 events	2821	3130	3481	11474	4594
	1%	1%	1%	4%	2%
grade 6 events	3705	3853	4734	59261	9369
	2%	2%	2%	23%	4%
grade 7 events	149134	141713	144169	98370	157541
	84%	87%	73%	39%	78%

2.2 Compared Parameters

Parameter	Planned	Actual	Parameter	Planned	Actual
Instrument	ACIS	ACIS	Obspar format version number	6	6
Detector	ACIS-23678	ACIS-23678	Obspar file type	PREDICTED	ACTUAL
Grating	NONE	NONE	Obspar update status	NONE	UPDATED
Data mode	FAINT	FAINT	Number of optional ACIS chips dropped	0	0
Observation mode	POINTING	POINTING	On-chip summing requested	N	N
Pointing RA	345.245410	345.2962941796994	Subarray requested	NONE	NONE
Pointing Dec	58.877621	58.86943045707795	Alternating exposures requested	N	N
Pointing Roll	312.682801	312.7958679702743	Primary exposure time	0.000000	3.2
SIM focus pos (mm)	-0.684267	-0.6828225247311905			
SIM defocus (mm)	0	0.001444936568705701			
SIM translation stage pos (mm)	-190.132523	-190.1400660498719			
SIM translation stage offset (mm)	0	0.00754346686406393			
Observation start time	64031518.184000	64030852.132678			
Observation start date	2000-01-12T02:30:54	2000-01-12T02:20:52			
Observation end time	64051518.184000	64052116.78345			
Observation end date	2000-01-12T08:04:14	2000-01-12T08:15:16			
Read mode	TIMED	TIMED			

2.3 Aspect



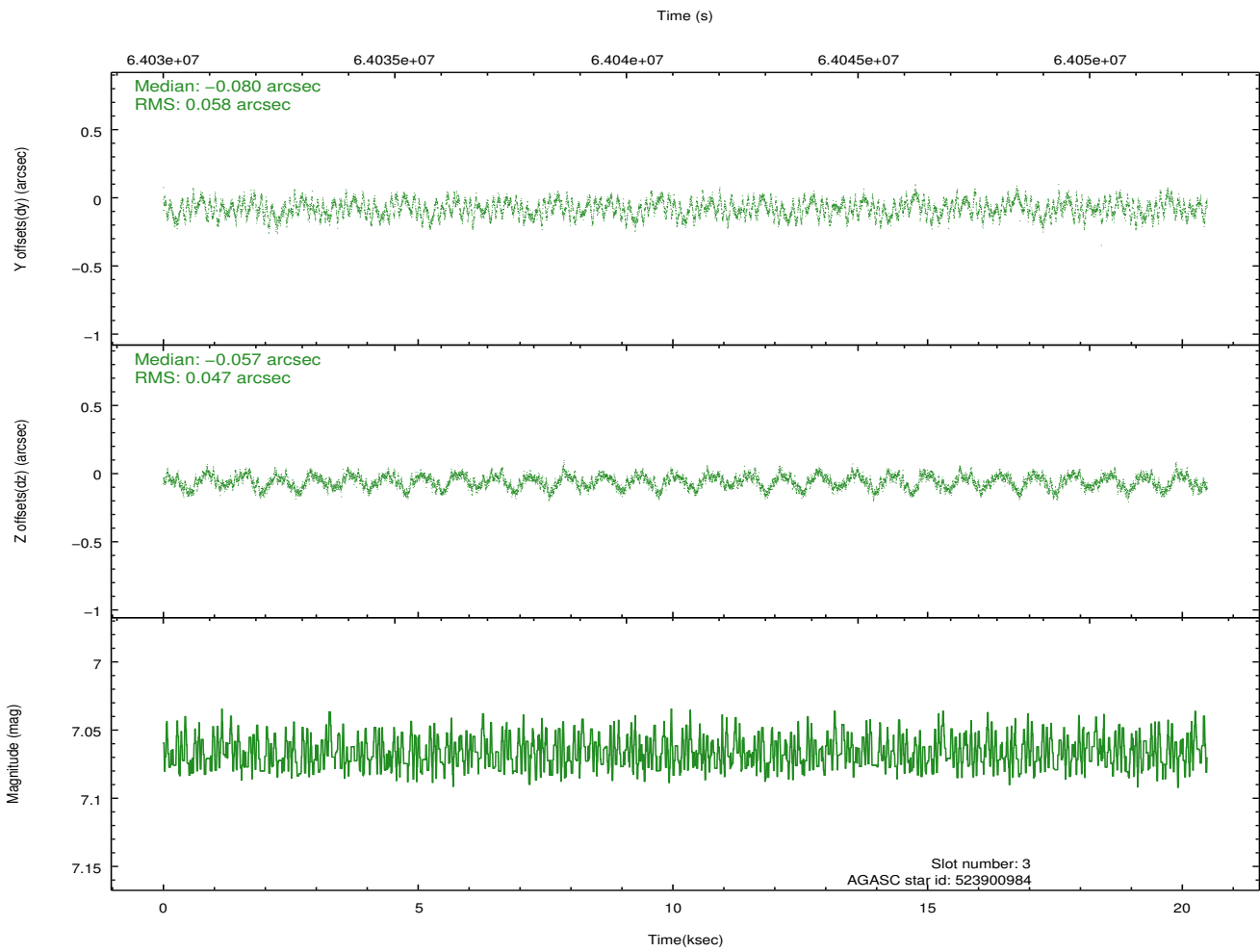
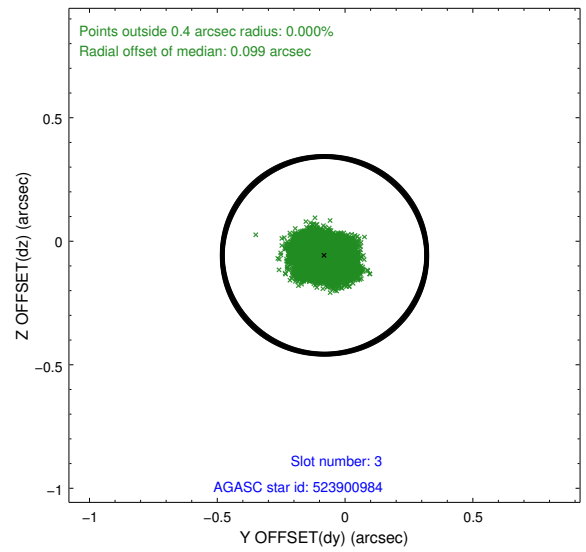
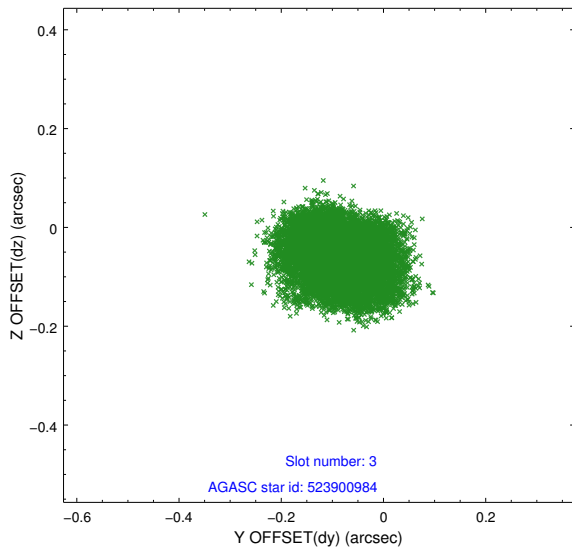


Slot Statistics

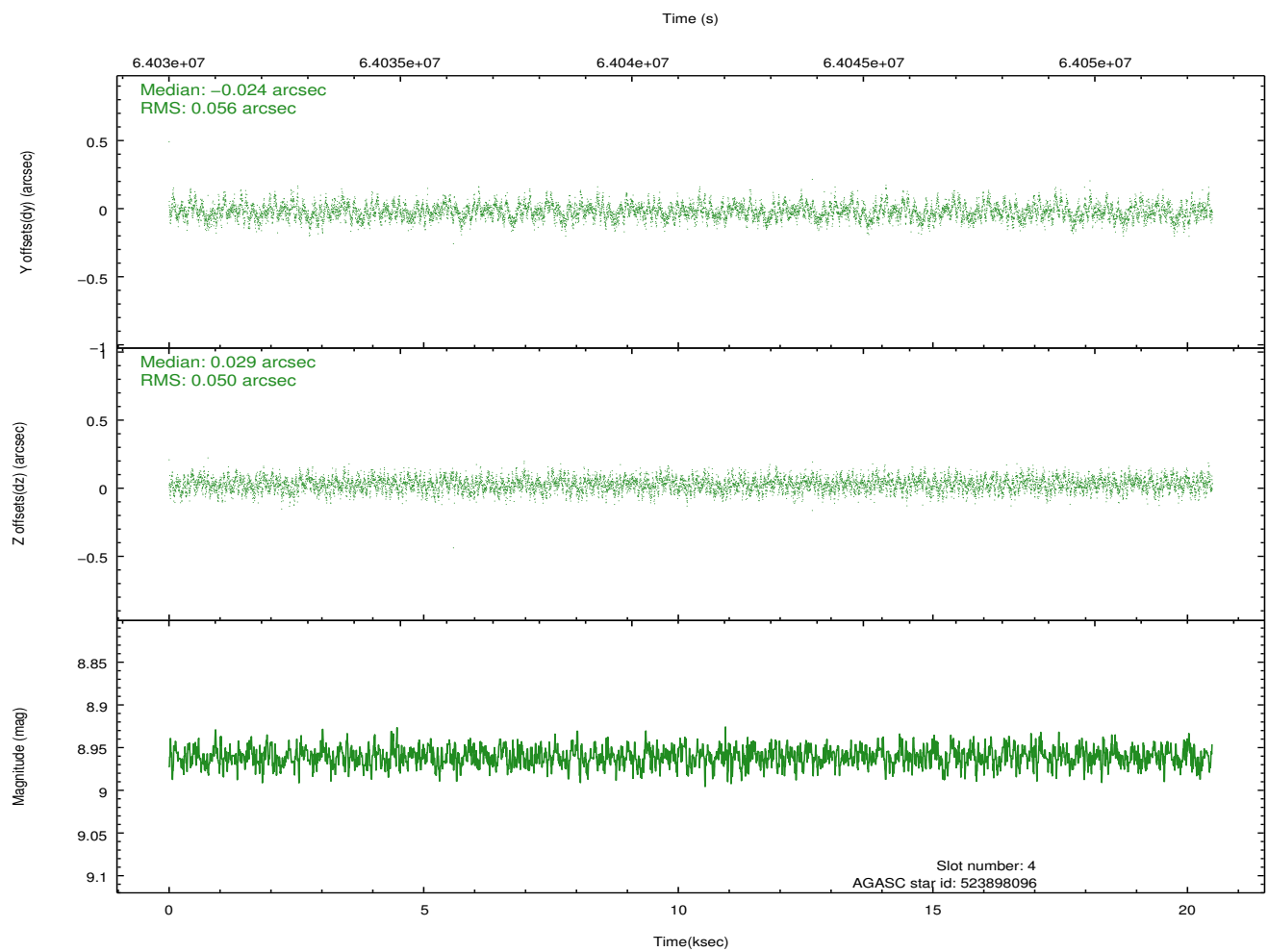
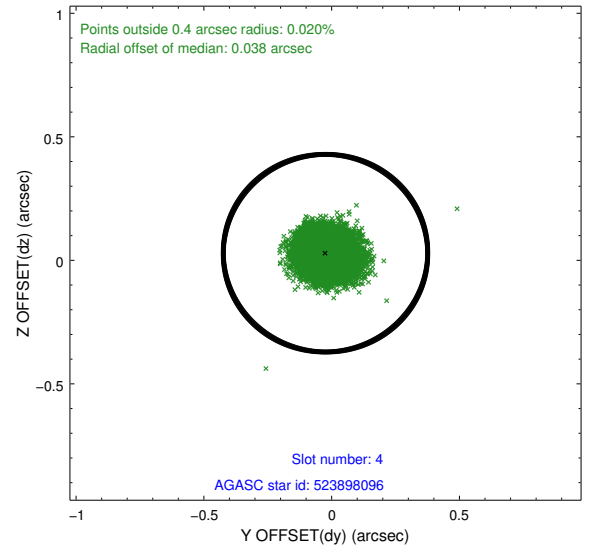
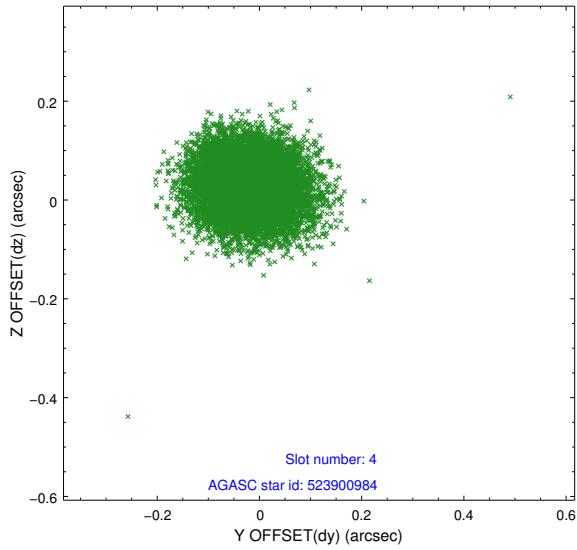
slot	status	id	mag	n_pts	med_dy	med_dz	dr1	dr2	ra	dec	mean_y	mean_z
0	FID	ACIS-S-1	7.19	4998	0.027	0.016	0.007	0.011	0.000000	0.000000	942.34	-1720.41
1	FID	ACIS-S-4	7.21	4998	-0.007	-0.019	0.006	0.011	0.000000	0.000000	2159.89	183.48
2	FID	ACIS-S-5	7.24	4998	-0.046	0.017	0.006	0.010	0.000000	0.000000	-1806.29	177.48
3	GUIDE	523900984	7.07	9996	-0.080	-0.057	0.083	0.124	345.671307	59.557771	-1275.66	2231.94
4	GUIDE	523898096	8.96	9991	-0.024	0.029	0.081	0.129	344.586580	58.320513	625.59	-2271.38
5	GUIDE	523913184	8.69	9991	0.086	-0.016	0.064	0.107	346.255850	58.466726	2366.59	404.96
6	GUIDE	523911376	8.53	9995	0.005	0.074	0.070	0.112	345.037714	59.619889	-2221.24	1533.26
7	GUIDE	523913080	9.63	9989	0.012	-0.026	0.096	0.153	344.537163	58.464670	183.66	-1983.77

2.4 Star Slots

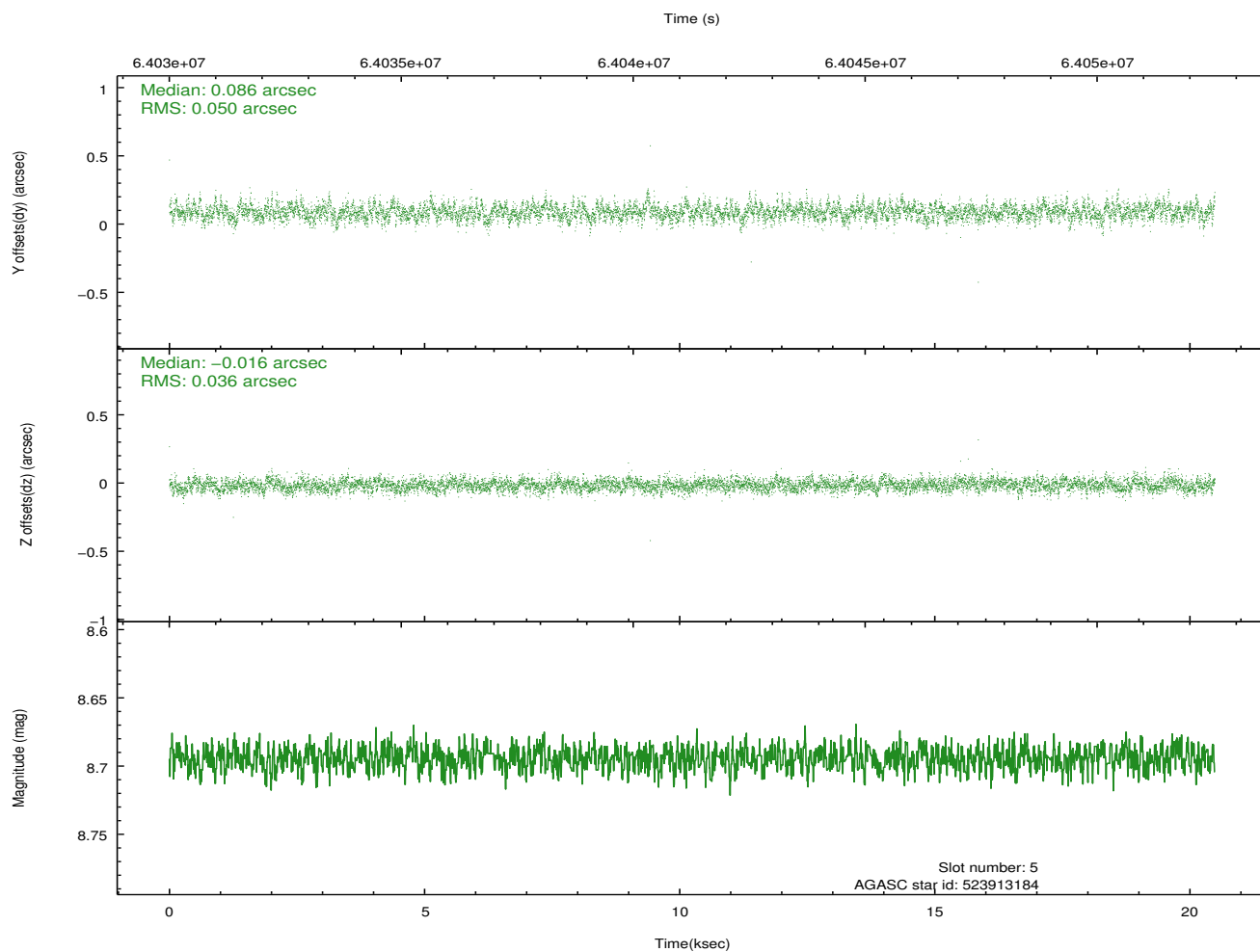
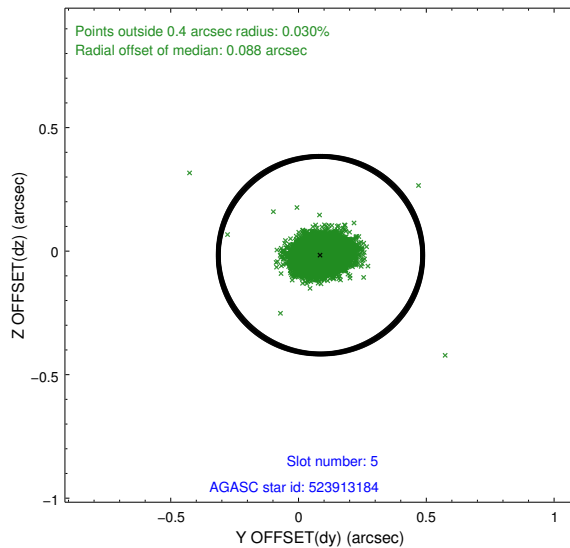
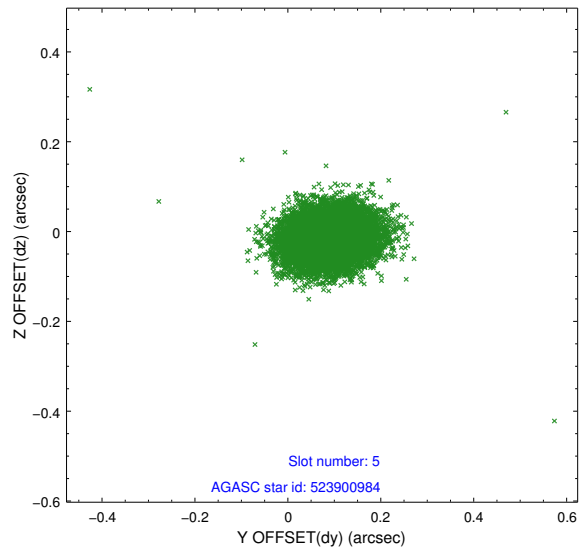
2.4.1 Slot 3



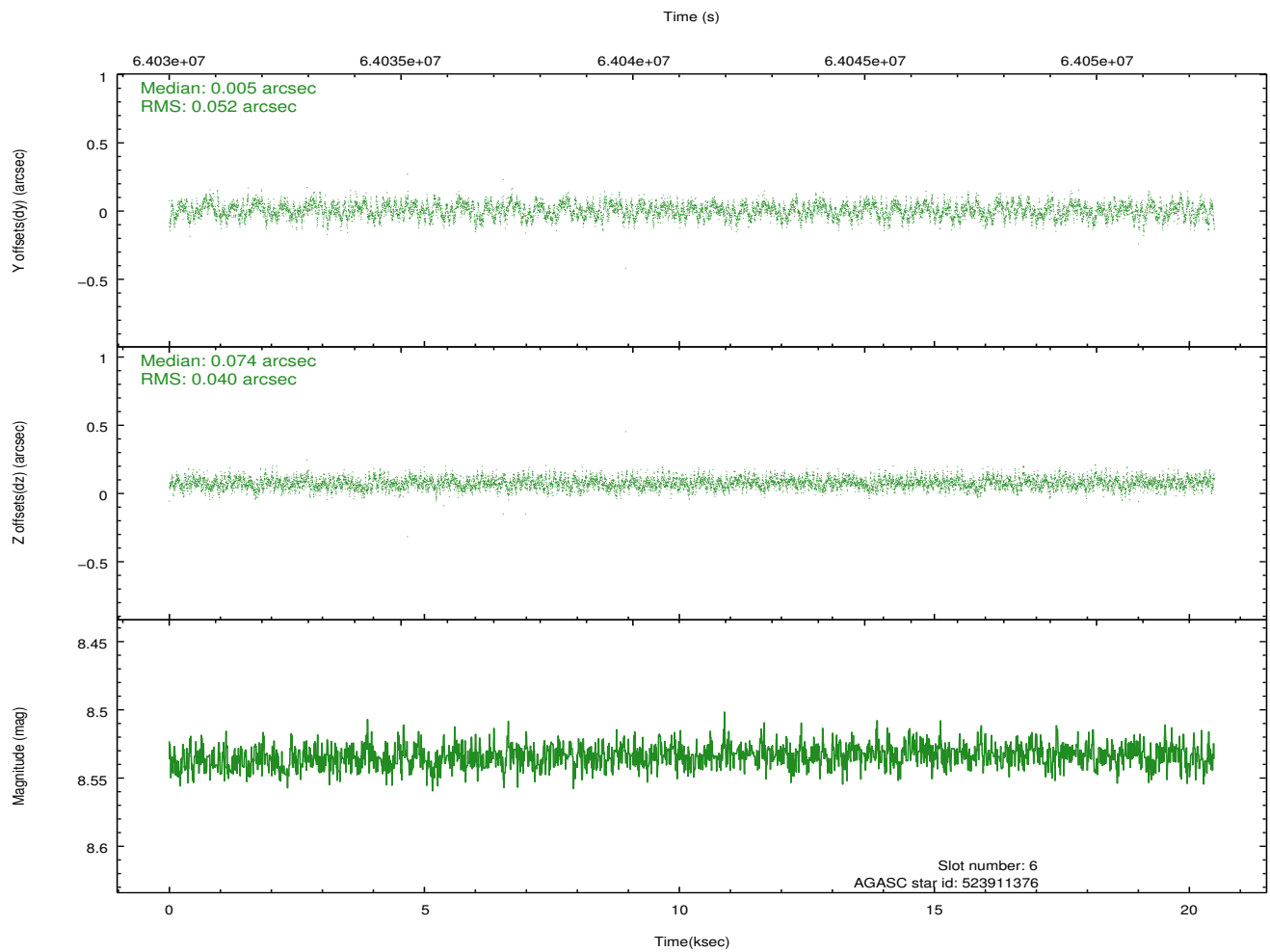
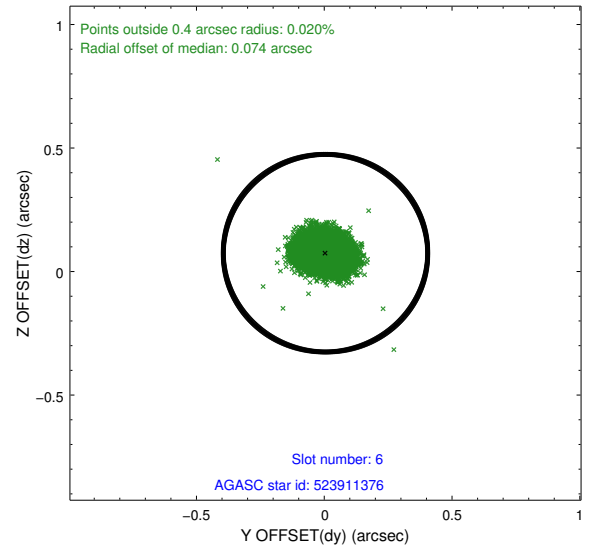
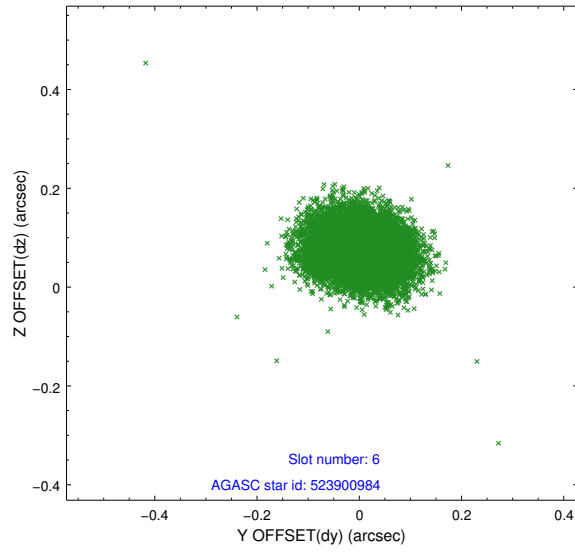
2.4.2 Slot 4



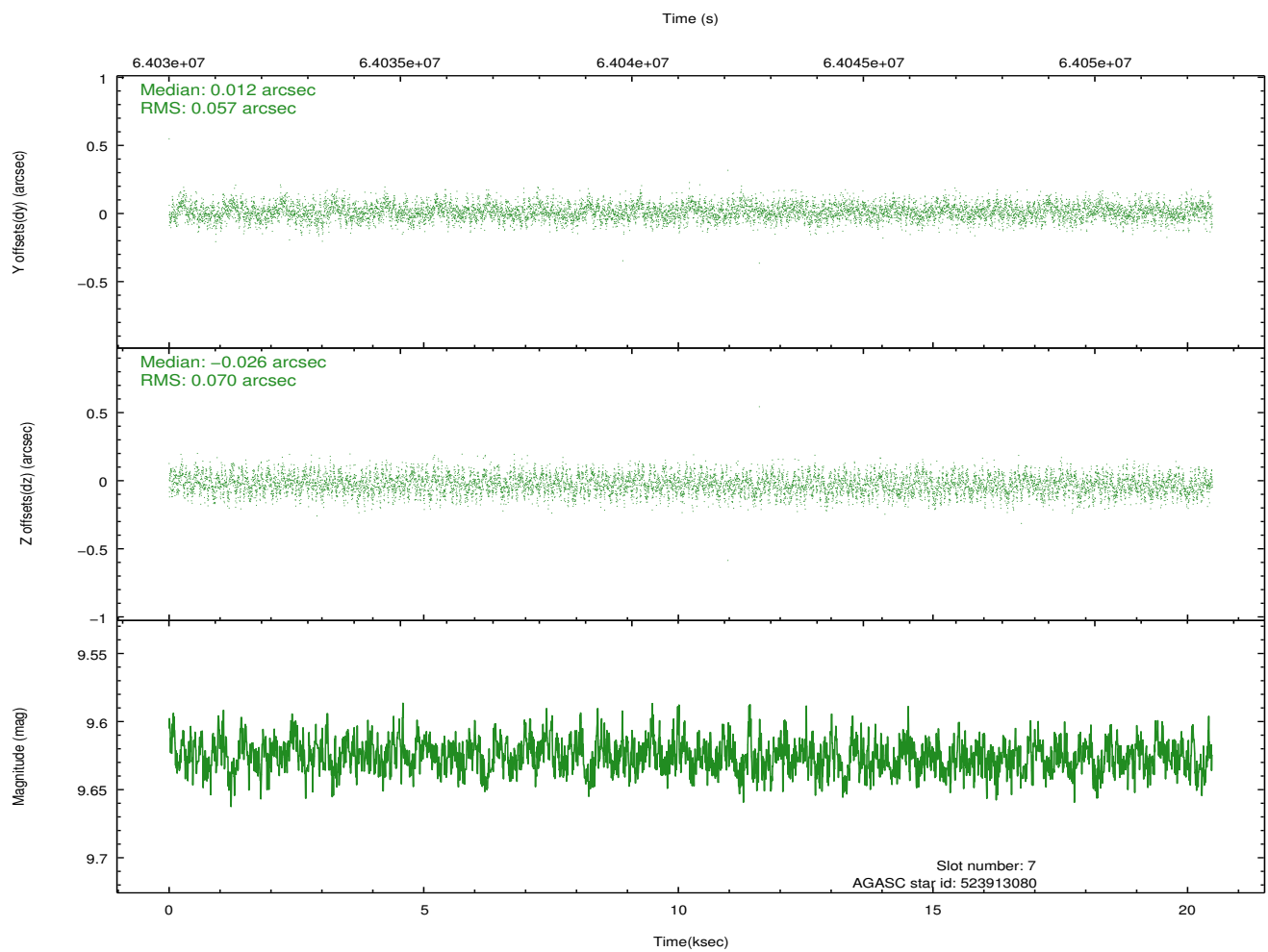
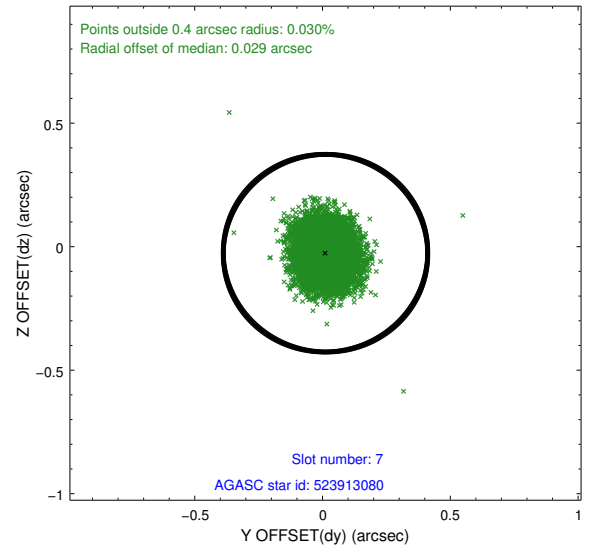
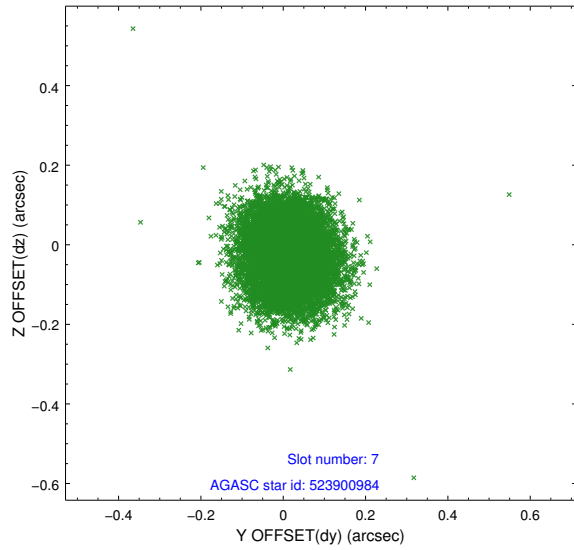
2.4.3 Slot 5



2.4.4 Slot 6

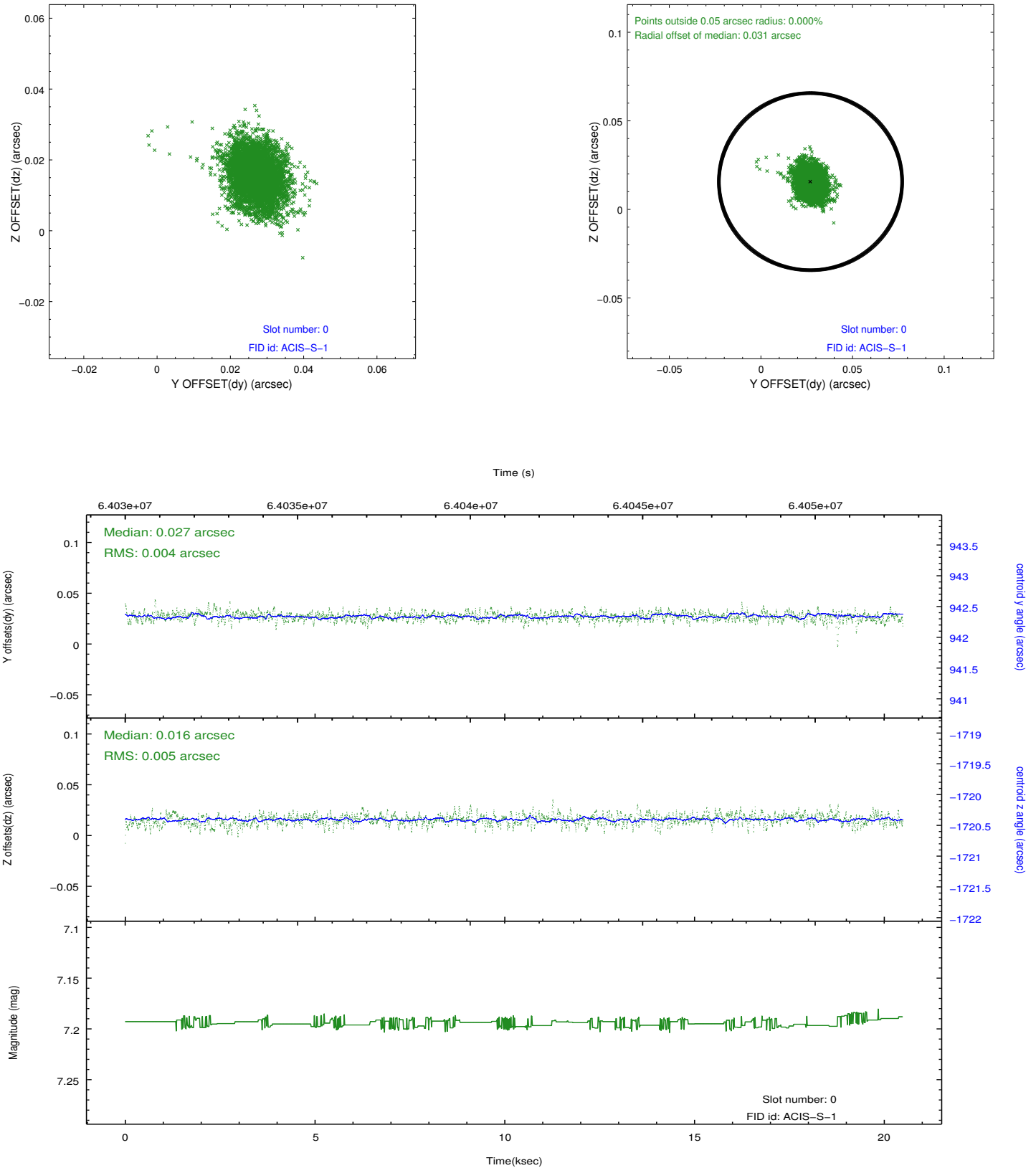


2.4.5 Slot 7

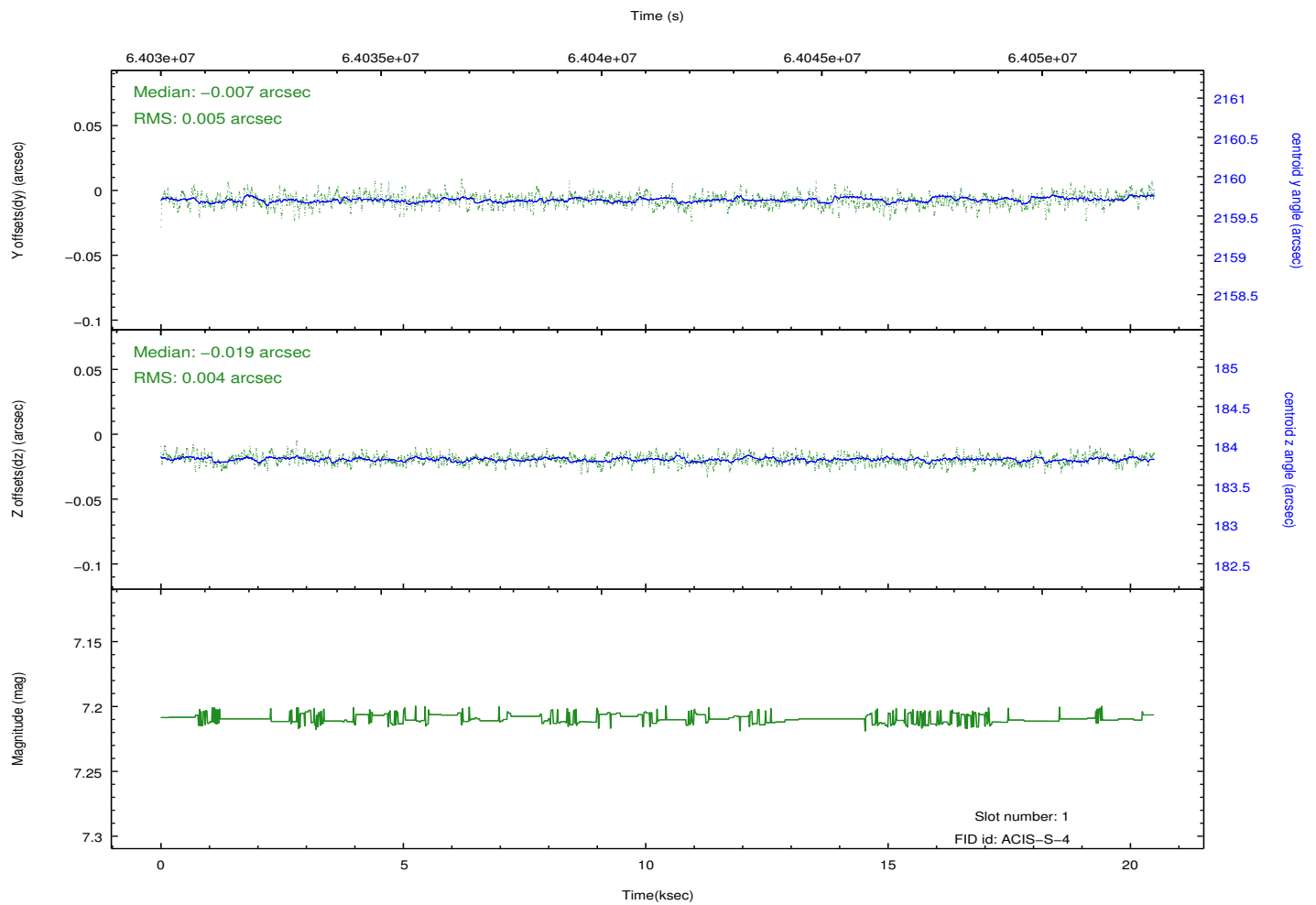
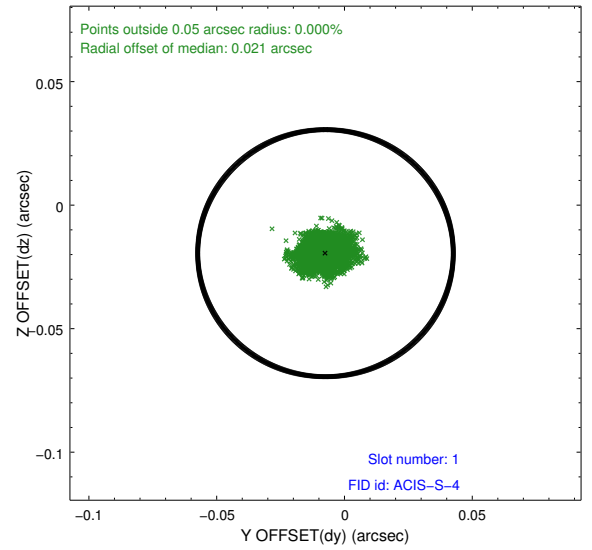
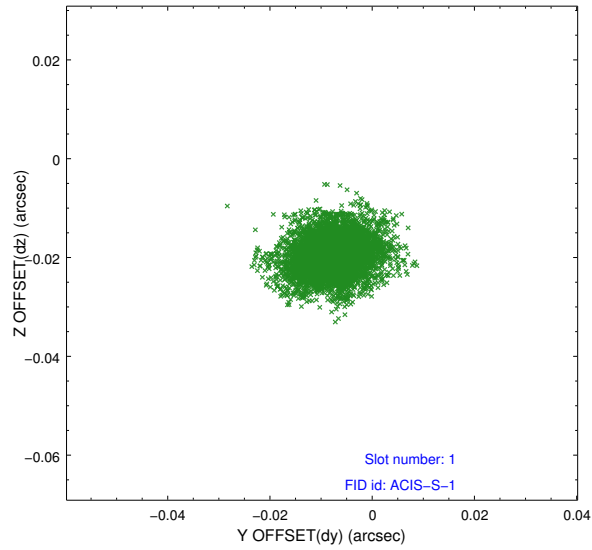


2.5 FID Slots

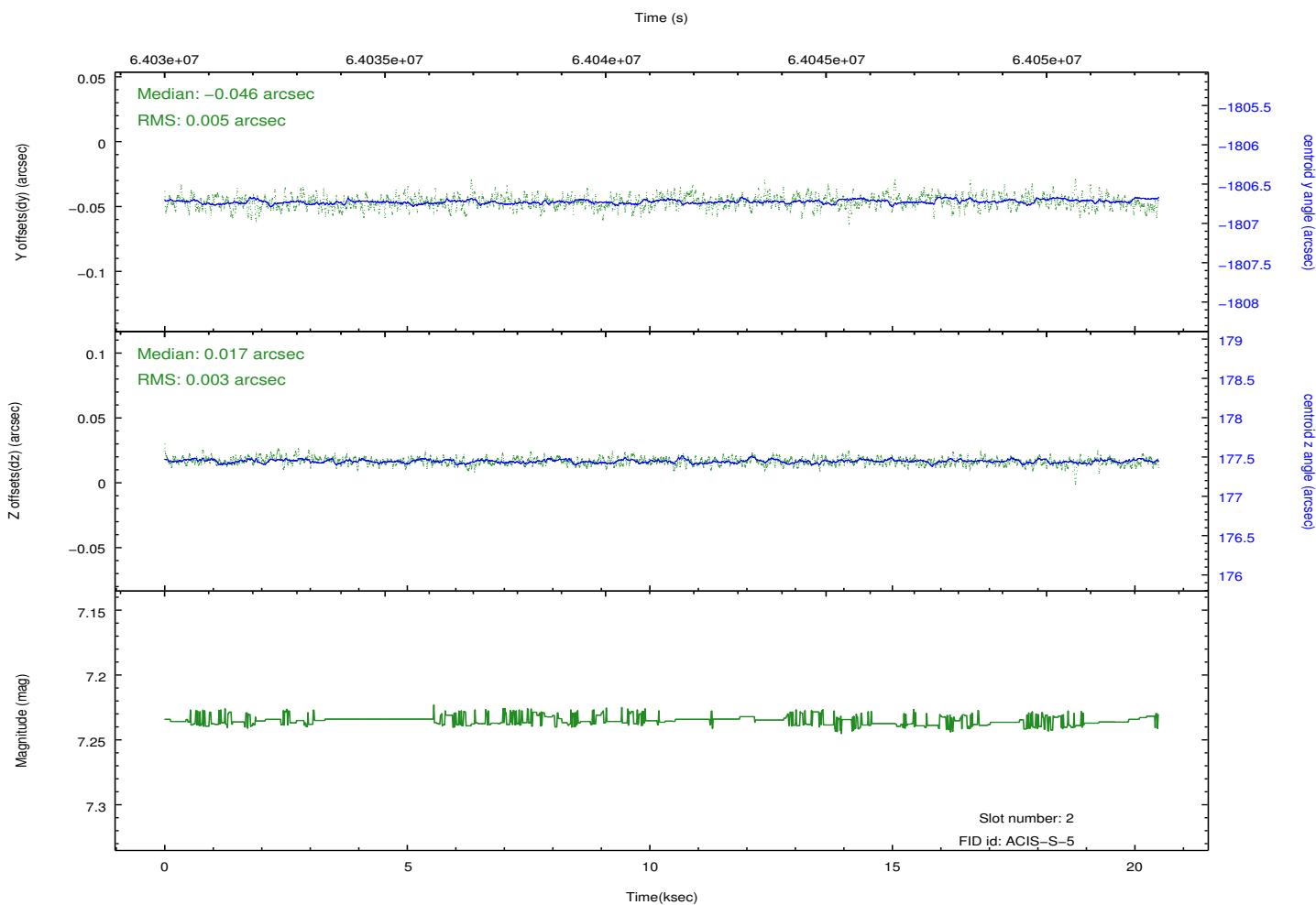
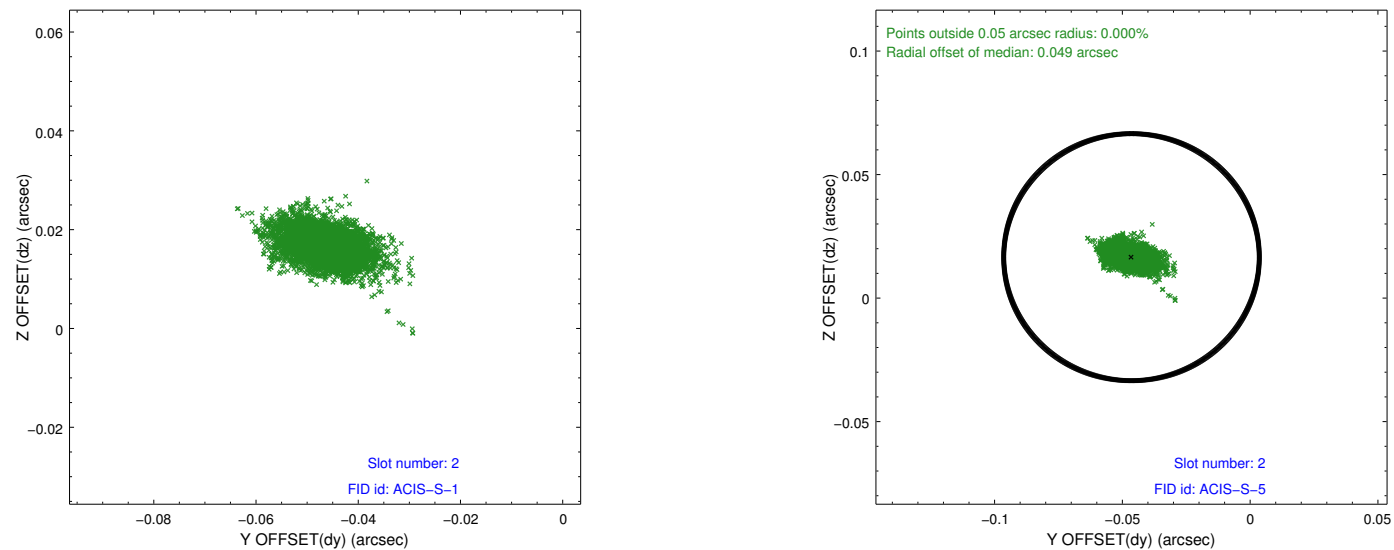
2.5.1 Slot 0



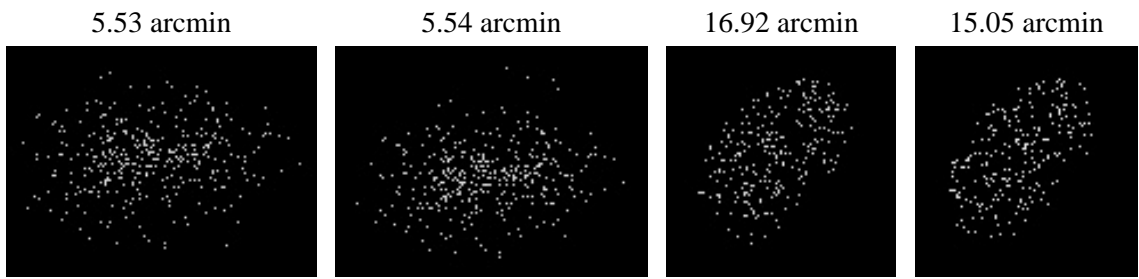
2.5.2 Slot 1



2.5.3 Slot 2



3 Point Sources



A Summary

A.1 Status

V&V Scientist	Beth Sundheim
V&V Date (YYYY-MM-DD)	2009.12.09
V&V Edition	1
V&V Disposition and Status	OK
V&V Charge Time	19.132

A.2 Comments

Focal plane temperature is warmer than -118.7 C degrees during the entire observation. This temperature is the upper limit of the verified ACIS calibration for the front-illuminated chips. The focal plane temperature is also warmer than -116.7 degrees C for the entire observation. This temperature is the upper limit of the verified ACIS calibration for the back-illuminated chips. The ACIS spectral response calibration is less accurate at these warmer temperatures than it is at -119.7 C. Users whose science objectives depend on the most accurate spectral response (ie: fitting line-rich spectra) may notice an effect. Users whose science objectives do not depend on the most accurate spectral response should not notice an effect.