

# V&V Reference Report

## L2 ASCDS Version : 8.4.3.1

Observation 7325 - L2 Version 2  
Chandra X-Ray Center

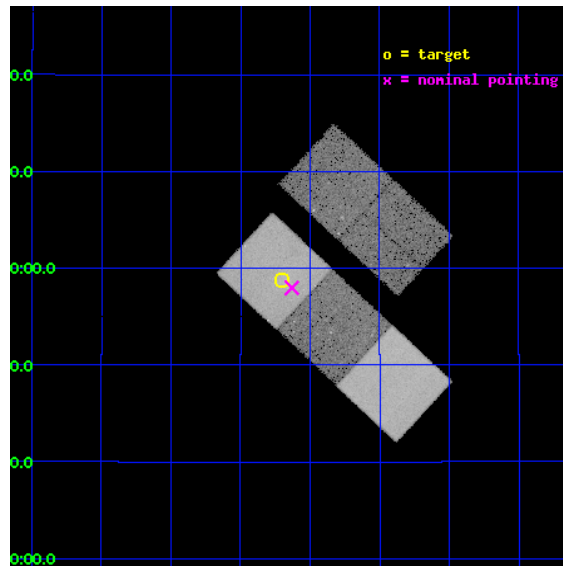
L2 Processing Date : Apr 1 2012

## Contents

<b>1</b>	<b>Front</b>	<b>2</b>
<b>2</b>	<b>OBI</b>	<b>3</b>
2.1	OBI . . . . .	3
2.1.1	Images . . . . .	3
2.1.2	Bias . . . . .	3
2.1.3	Parameters . . . . .	4
2.1.4	Events . . . . .	4
2.2	Compared Parameters . . . . .	5
2.3	Aspect . . . . .	6
2.4	Star Slots . . . . .	9
2.4.1	Slot 3 . . . . .	9
2.4.2	Slot 4 . . . . .	10
2.4.3	Slot 5 . . . . .	11
2.4.4	Slot 6 . . . . .	12
2.4.5	Slot 7 . . . . .	13
2.5	FID Slots . . . . .	14
2.5.1	Slot 0 . . . . .	14
2.5.2	Slot 1 . . . . .	15
2.5.3	Slot 2 . . . . .	16
<b>A</b>	<b>Summary</b>	<b>17</b>
A.1	Status . . . . .	17
A.2	Comments . . . . .	17

# 1 Front

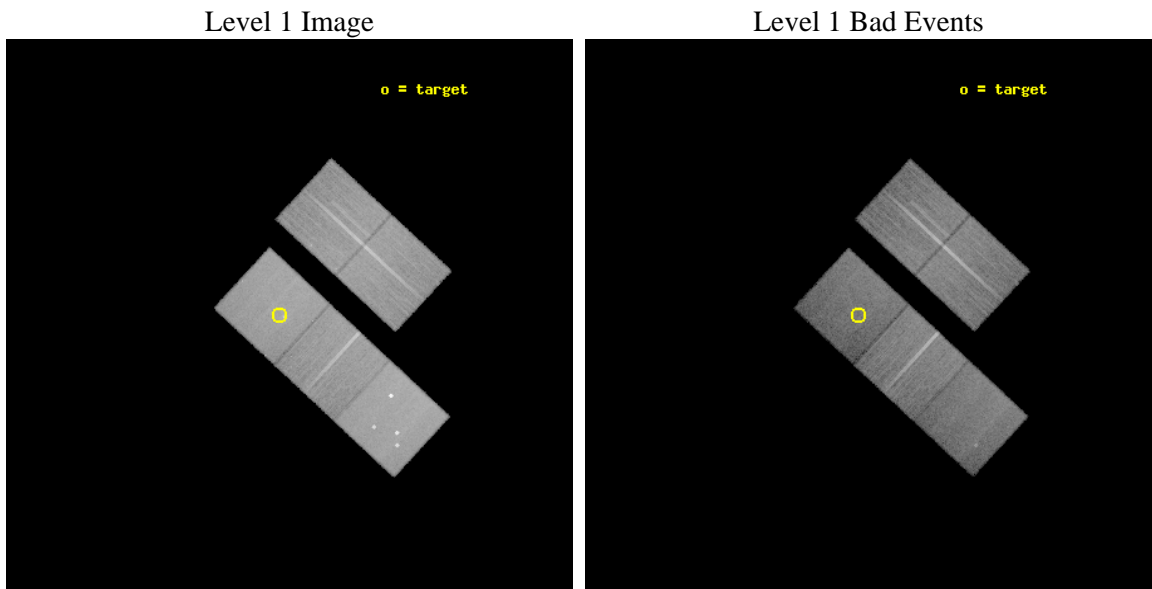
seq_num	800577	Sequence number
obs_id	7325	Observation id
title	The Cosmological Formation of Galaxy Groups	Proposal title
observer	Dr. DAVID BUOTE	Principal investigator
object	RXC J1324.1+1358	Source name
dtcycle	0	&#160
cycle	P	events from which exps? Prim/Second/Both
ra_targ	201.049583	Observer's specified target RA [deg]
dec_targ	13.979167	Observer's specified target Dec [deg]
ra_nom	201.03272557809	Nominal RA [deg]
dec_nom	13.966349154374	Nominal Dec [deg]
roll_nom	222.8316619227	Nominal Roll [deg]
revision	2	Processing version of data
ontime	26182.599949628	Sum of GTIs [s]
livetime	25840.505005937	Livetime [s]
ontime2	26176.317959189	Sum of GTIs [s]
ontime3	26173.176968992	Sum of GTIs [s]
ontime5	26182.599949628	Sum of GTIs [s]
ontime6	26176.318078756	Sum of GTIs [s]
ontime7	26182.599949628	Sum of GTIs [s]
l2events	275642	Number of level 2 events



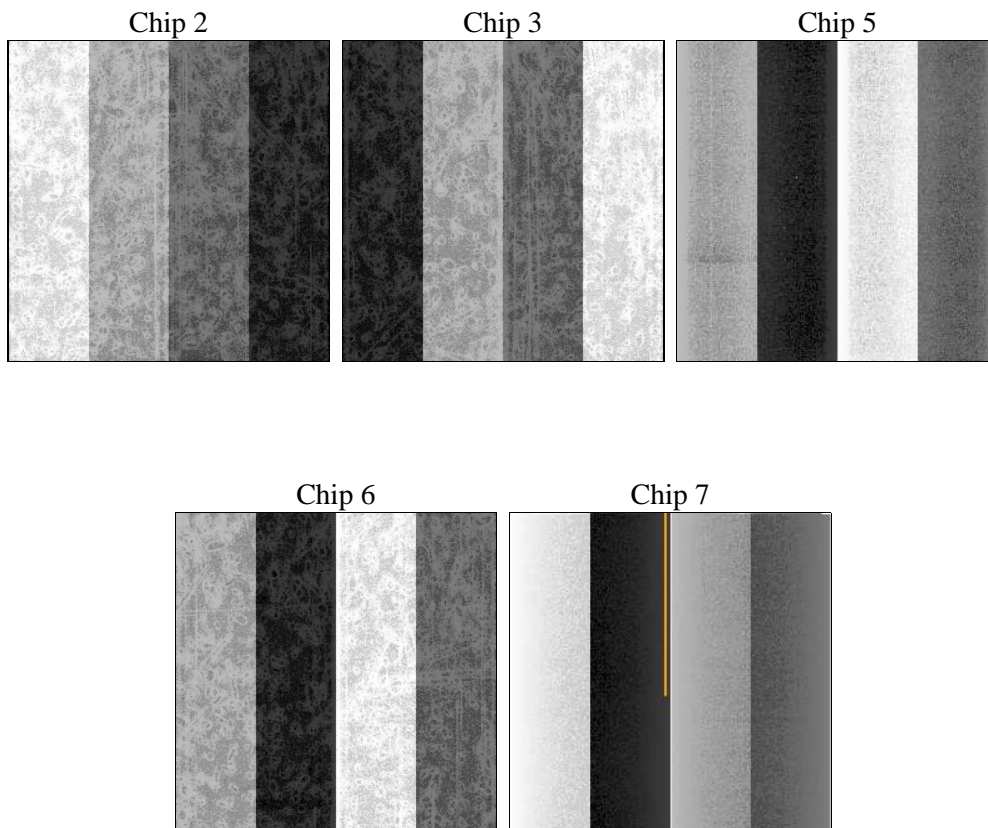
## 2 OBI

### 2.1 OBI

#### 2.1.1 Images



#### 2.1.2 Bias



### 2.1.3 Parameters

obi_num	0	Obi number	sched_exp_time	26000.000000	[s] Scheduled observation exposure time
ascdsver	8.4.3	Processing system revision	ontime	26182.599949628	Sum of GTIs [s]
caldsver	4.4.9	&#160	ontime2	26176.317959189	Sum of GTIs [s]
date	2012-04-01T05:18:51	Date and time of file creation	ontime3	26173.176968992	Sum of GTIs [s]
revision	2	Processing version of data	ontime5	26182.599949628	Sum of GTIs [s]
			ontime6	26176.318078756	Sum of GTIs [s]
			ontime7	26182.599949628	Sum of GTIs [s]
			l1events	1129571	Number of level 1 events

### 2.1.4 Events

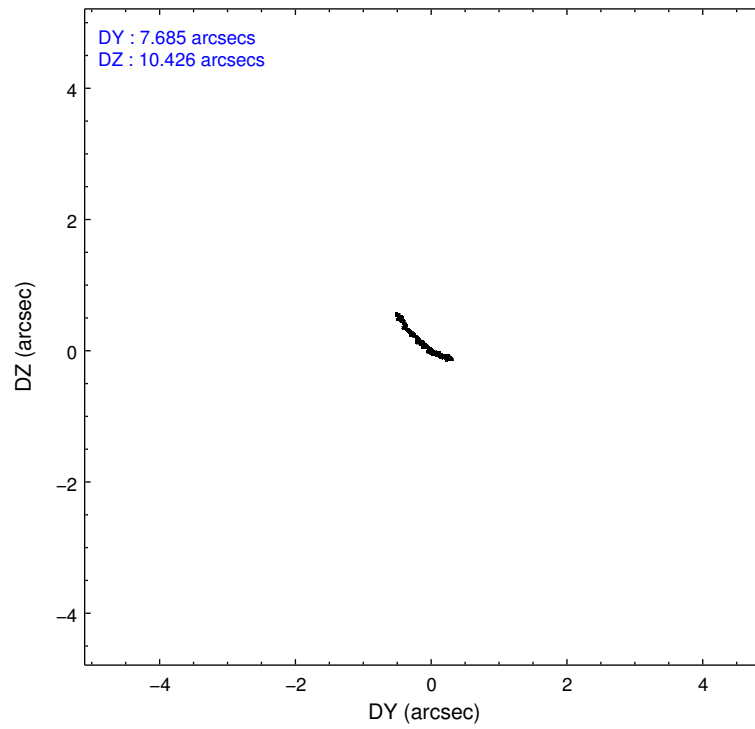
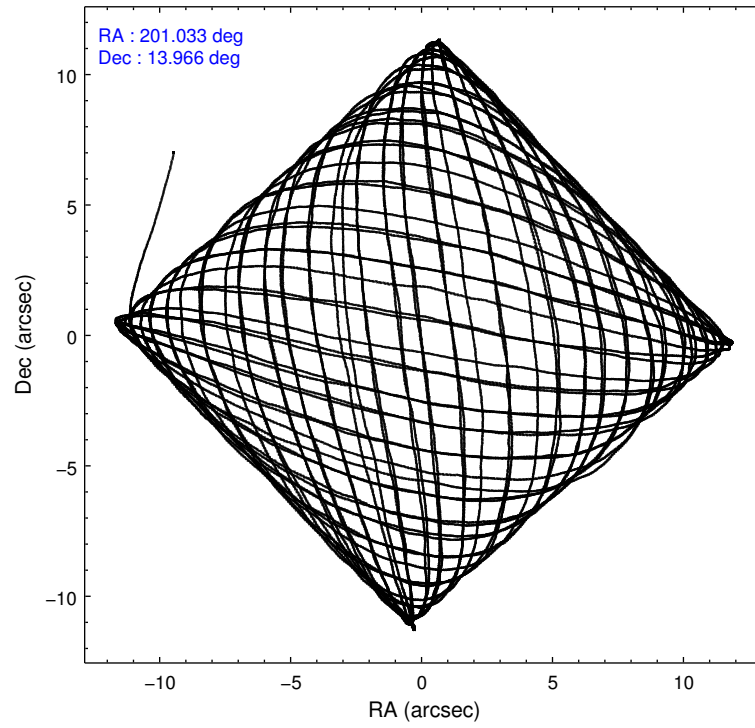
	ccd 2	ccd 3	ccd 5	ccd 6	ccd 7
level 1 events	207822	199639	285943	204426	231741
rejected events	189259	180976	142873	183422	125686
rejected %	91%	90%	49%	89%	54%

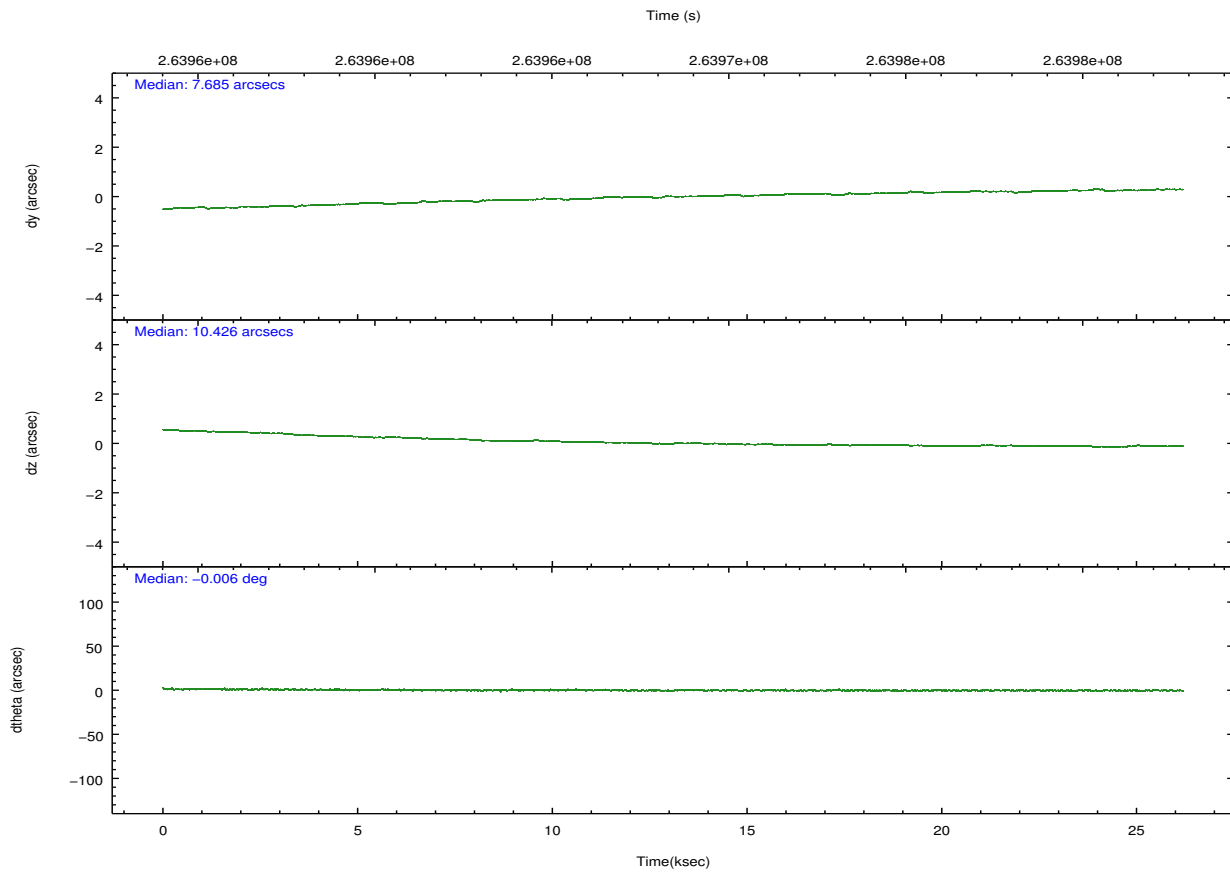
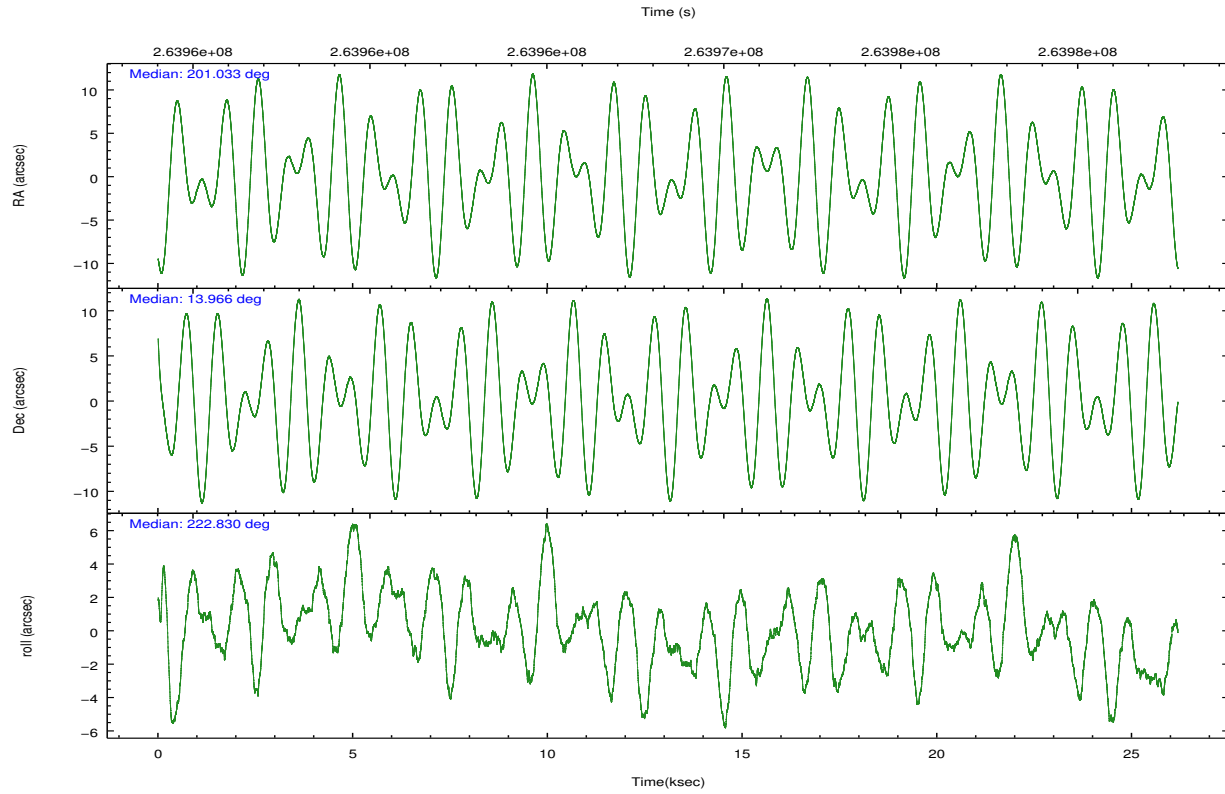
	ccd 2	ccd 3	ccd 5	ccd 6	ccd 7
grade 0 events	7125	7182	25146	8370	12164
	3%	3%	8%	4%	5%
grade 1 events	111	129	380	111	199
	0%	0%	0%	0%	0%
grade 2 events	4383	4009	40926	4505	22801
	2%	2%	14%	2%	9%
grade 3 events	2036	2220	5769	2334	10614
	0%	1%	2%	1%	4%
grade 4 events	2197	2144	5691	2192	10114
	1%	1%	1%	1%	4%
grade 5 events	6181	7867	21772	8074	23335
	2%	3%	7%	3%	10%
grade 6 events	3488	3748	70410	4352	53884
	1%	1%	24%	2%	23%
grade 7 events	182301	172340	115849	174488	98630
	87%	86%	40%	85%	42%

## 2.2 Compared Parameters

Parameter	Planned	Actual	Parameter	Planned	Actual
Instrument	ACIS	ACIS	Obspar format version number	7	7
Detector	ACIS-23567	ACIS-23567	Obspar file type	PREDICTED	ACTUAL
Grating	NONE	NONE	Obspar update status	NONE	UPDATED
Data mode	VFAINT	VFAINT	Number of optional ACIS chips dropped	0	0
Observation mode	POINTING	POINTING	On-chip summing requested	N	N
[deg] Pointing RA	201.040660	201.032725578094	Subarray requested	NONE	NONE
[deg] Pointing Dec	13.992492	13.96634915437356	Alternating exposures requested	N	N
[deg] Pointing Roll	222.673116	222.8316619227011	[s] Primary exposure time	0.000000	3.1
[mm] SIM focus pos	-0.684267	-0.6828225247311905			
[mm] SIM defocus	0	0.001444936568705701			
[mm] SIM translation stage pos	-190.132523	-190.1400660498719			
[mm] SIM translation stage offset	0	0.00754346686406393			
[s] Observation start time (MET)	263955521.184000	263954077.08784			
Observation start date	2006-05-14T00:57:36	2006-05-14T00:34:37			
[s] Observation end time (MET)	263981521.184000	263982254.33916			
Observation end date	2006-05-14T08:10:56	2006-05-14T08:24:14			
Read mode	TIMED	TIMED			

## 2.3 Aspect



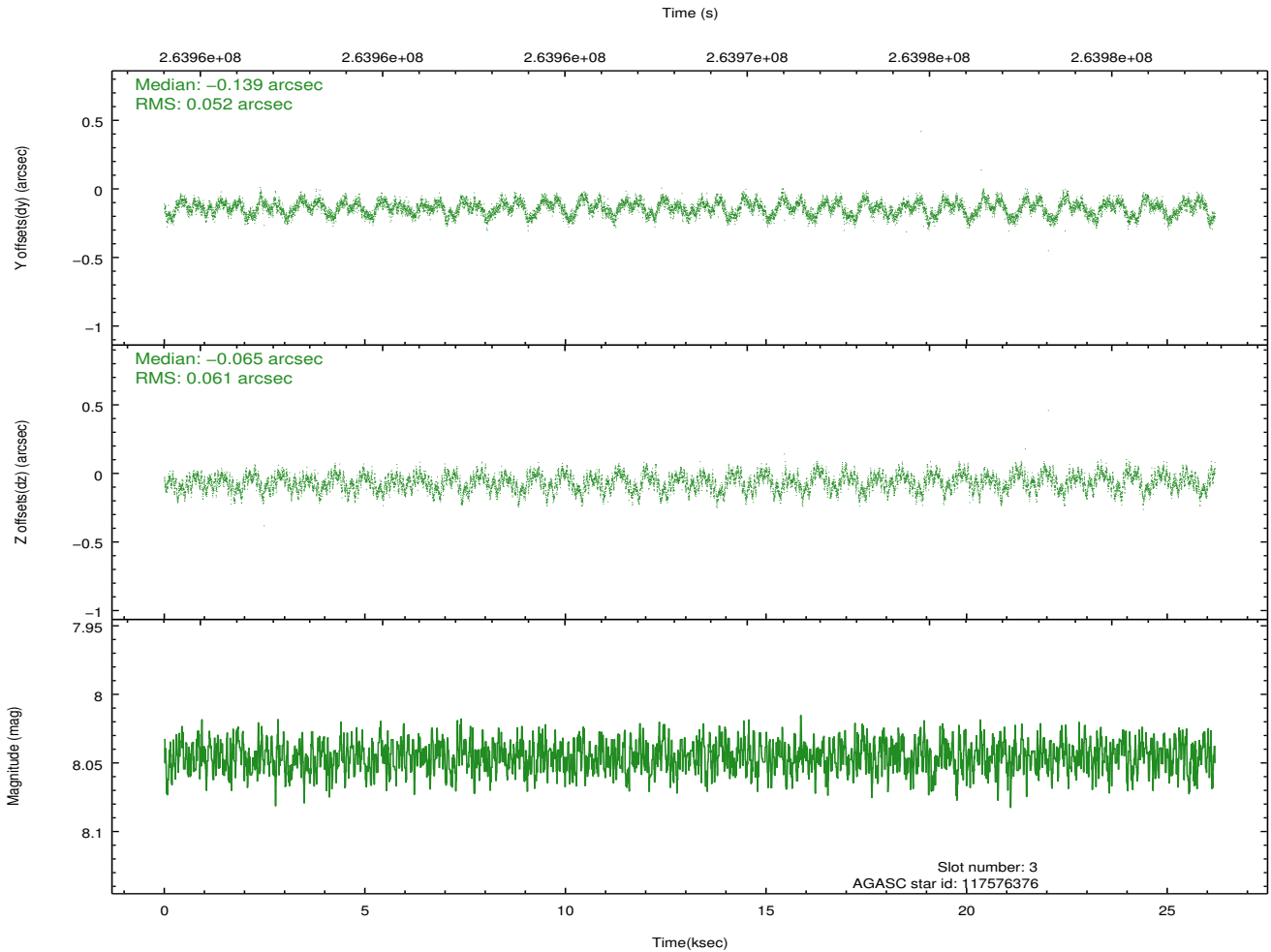
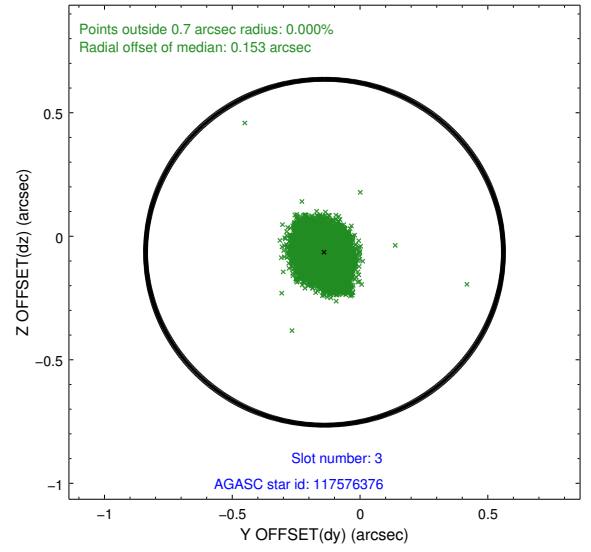
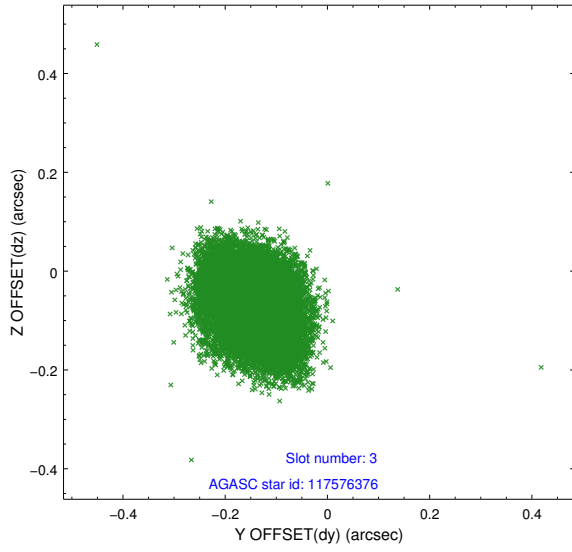


### Slot Statistics

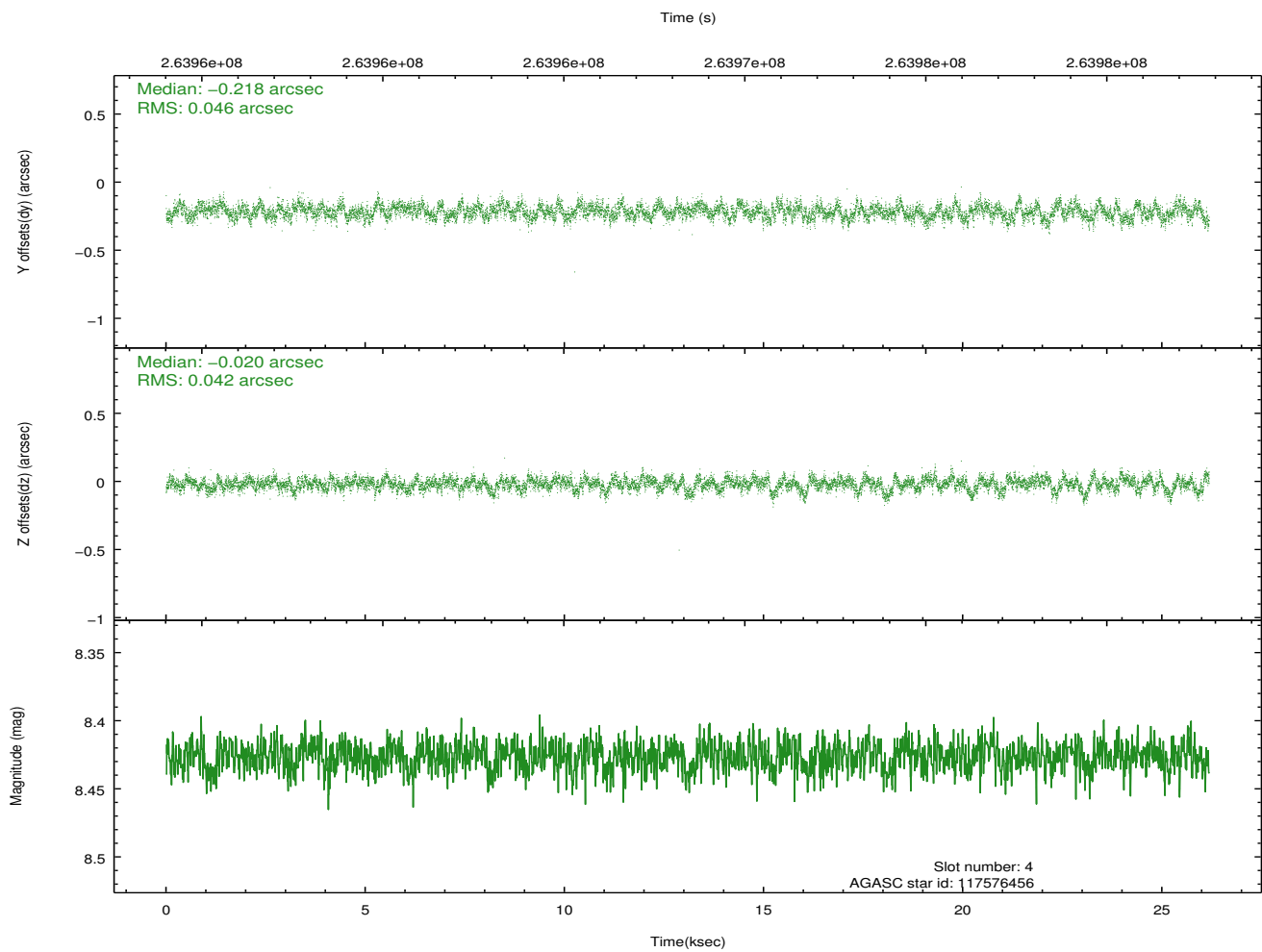
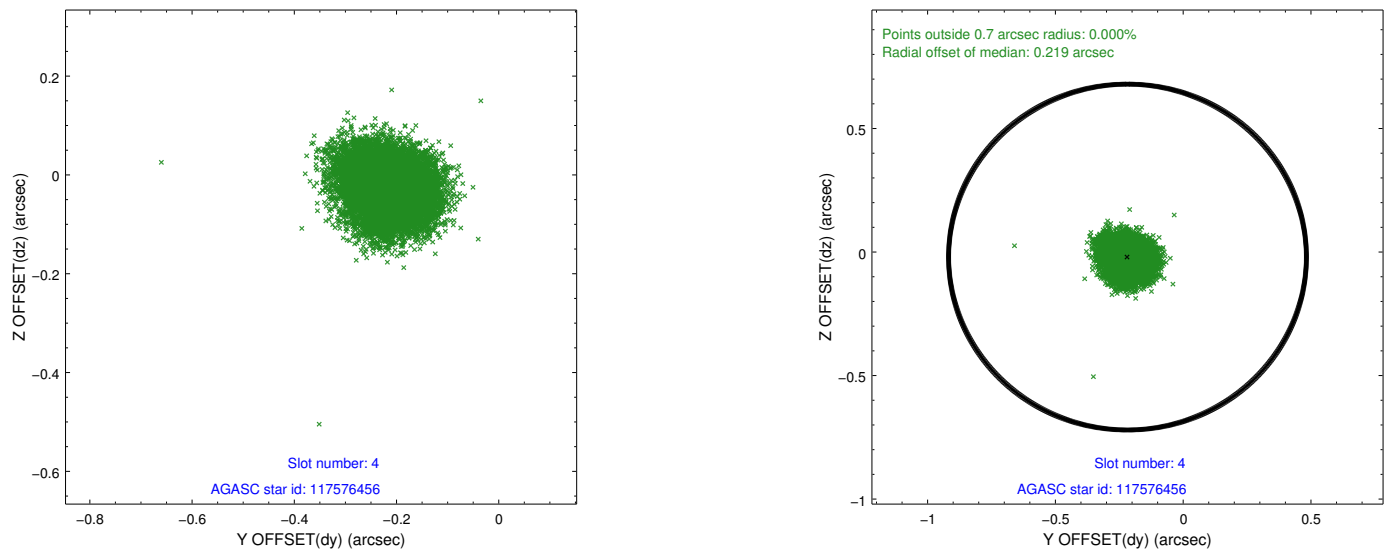
slot	status	id	mag	n_pts	med_dy	med_dz	dr1	dr2	ra	dec	mean_y	mean_z
0	FID	ACIS-S-2	7.11	6387	-0.048	-0.024	0.009	0.015	0.000000	0.000000	-760.41	-1731.80
1	FID	ACIS-S-4	7.21	6387	0.113	0.029	0.015	0.023	0.000000	0.000000	2152.93	176.70
2	FID	ACIS-S-5	7.24	6388	-0.097	0.003	0.015	0.023	0.000000	0.000000	-1813.22	170.36
3	GUIDE	117576376	8.05	12765	-0.139	-0.065	0.086	0.134	201.484124	13.674891	-366.50	1891.15
4	GUIDE	117576456	8.43	12768	-0.218	-0.020	0.067	0.107	201.530586	14.346723	-2121.94	219.57
5	GUIDE	117576784	9.61	12764	0.126	0.062	0.137	0.232	200.692456	13.866260	1202.63	-491.23
6	GUIDE	117577520	8.94	12763	-0.040	0.069	0.069	0.112	201.161935	14.468034	-1470.35	-971.48
7	GUIDE	117572664	9.77	12760	0.274	-0.048	0.139	0.222	200.729003	13.335880	2404.78	997.63

## 2.4 Star Slots

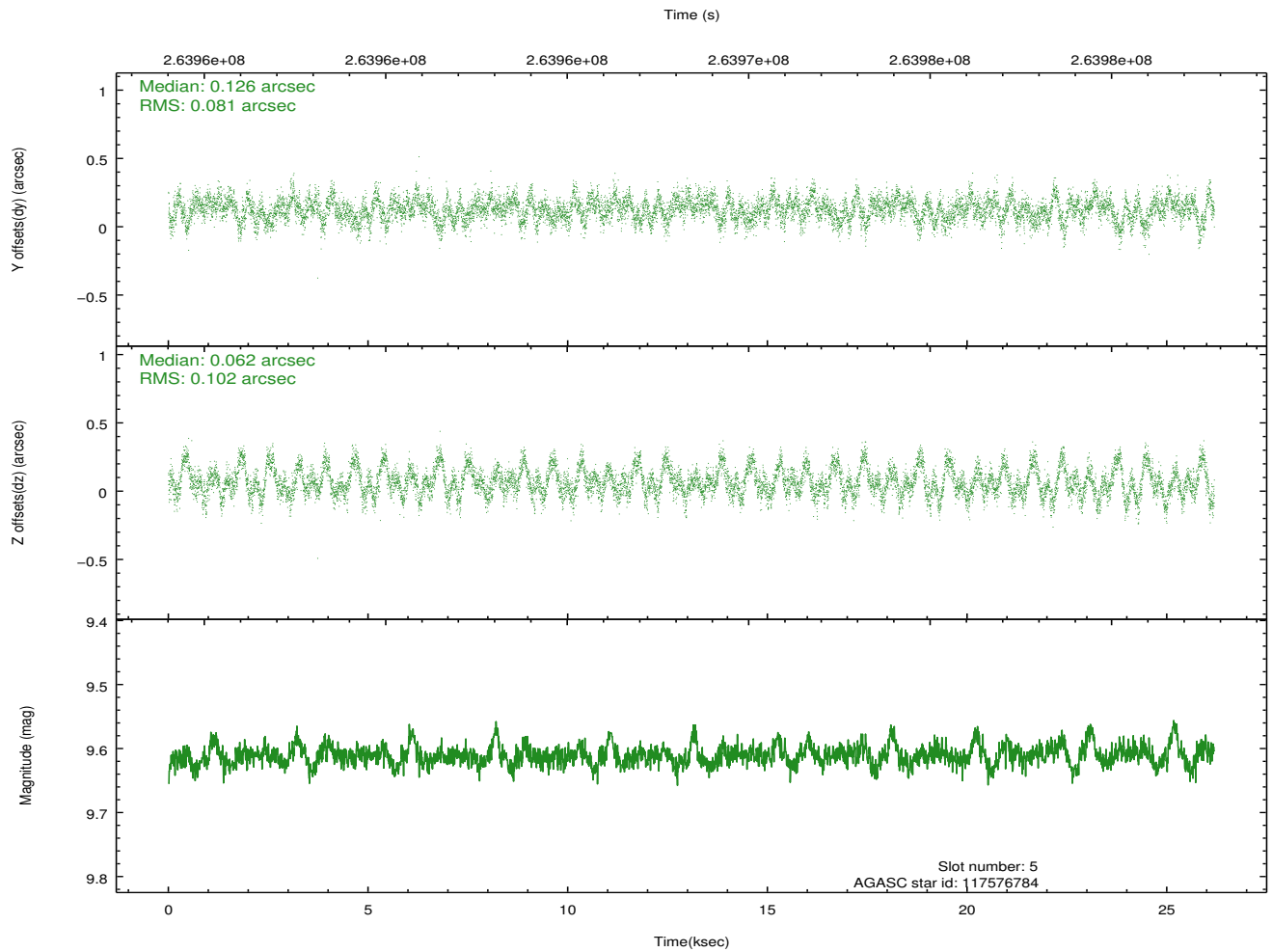
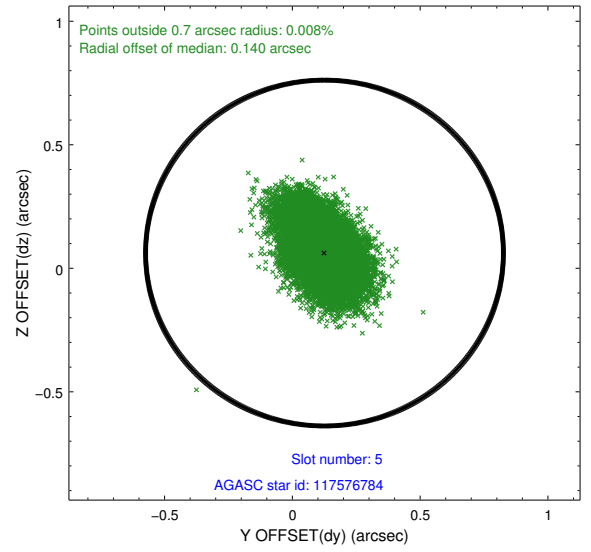
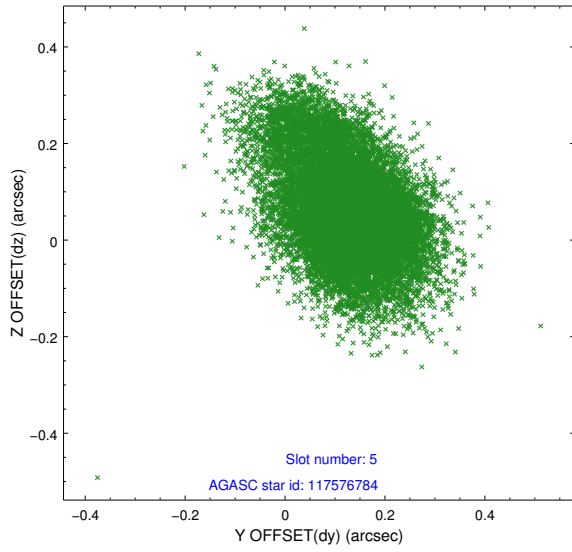
### 2.4.1 Slot 3



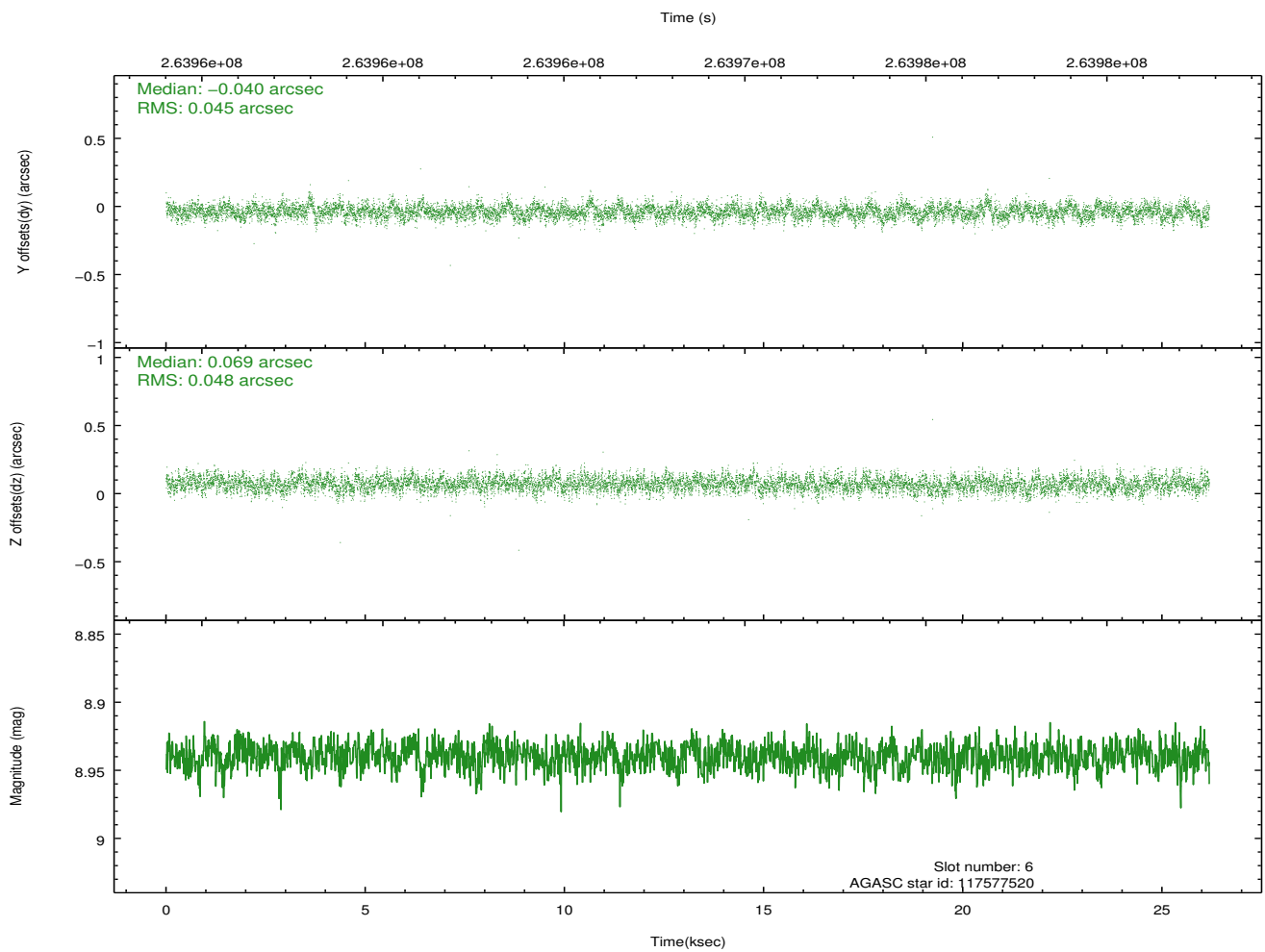
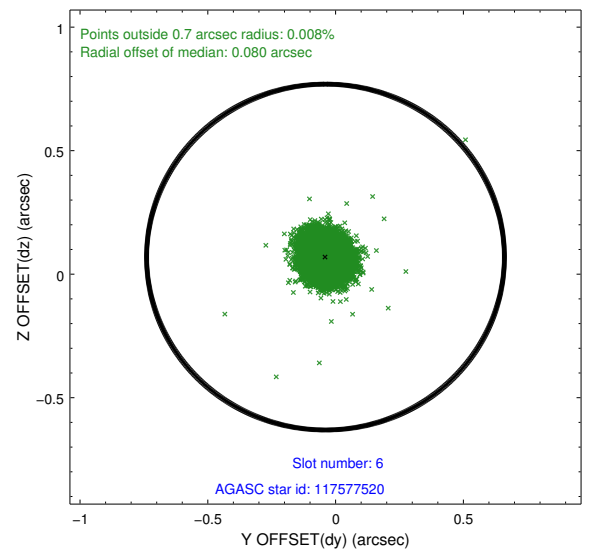
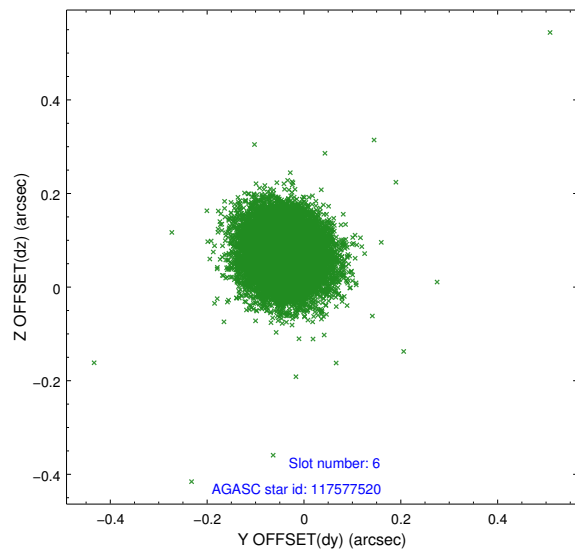
## 2.4.2 Slot 4



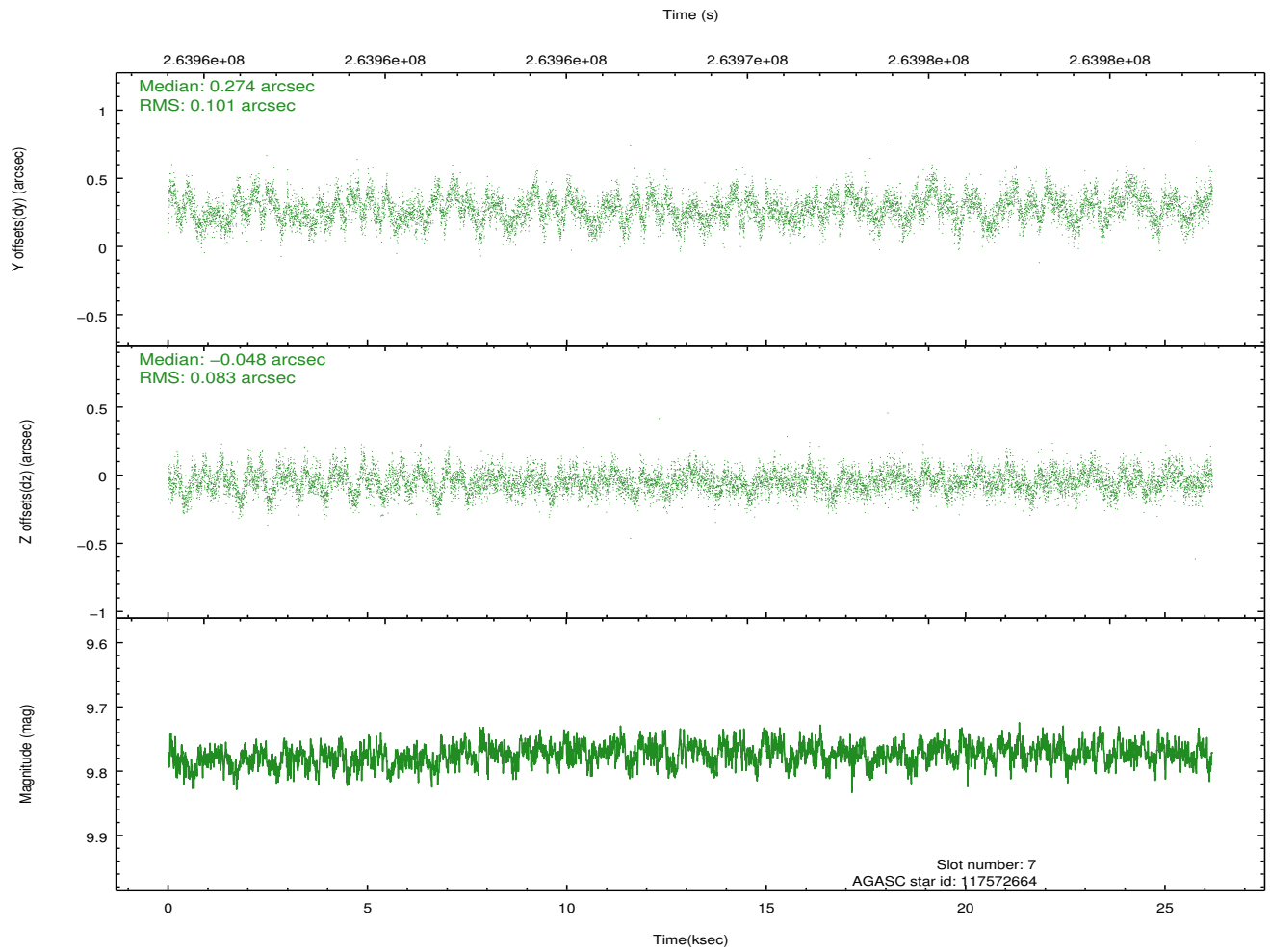
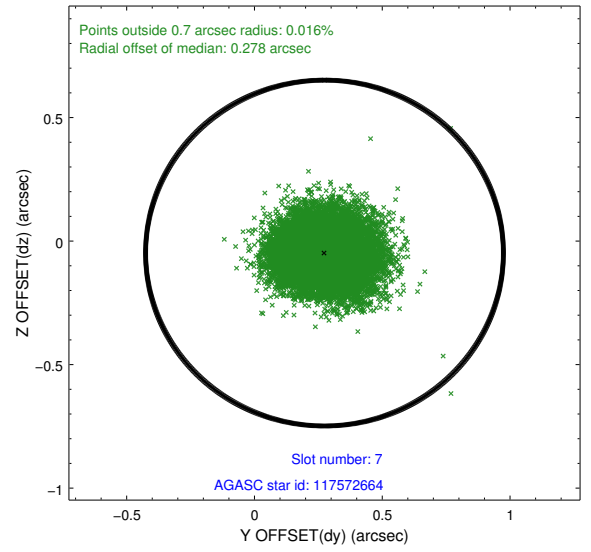
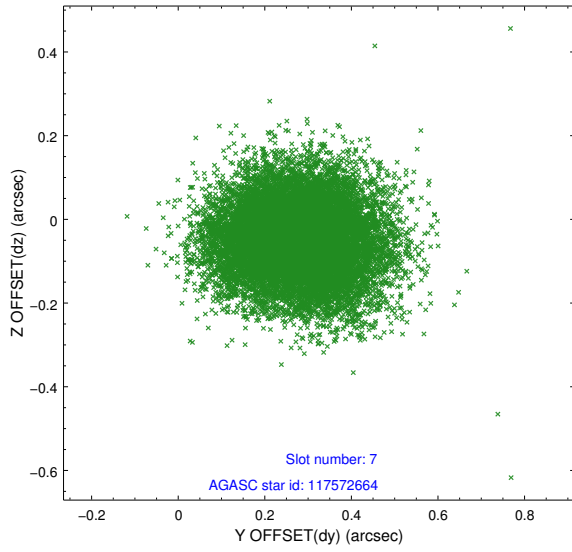
### 2.4.3 Slot 5



## 2.4.4 Slot 6

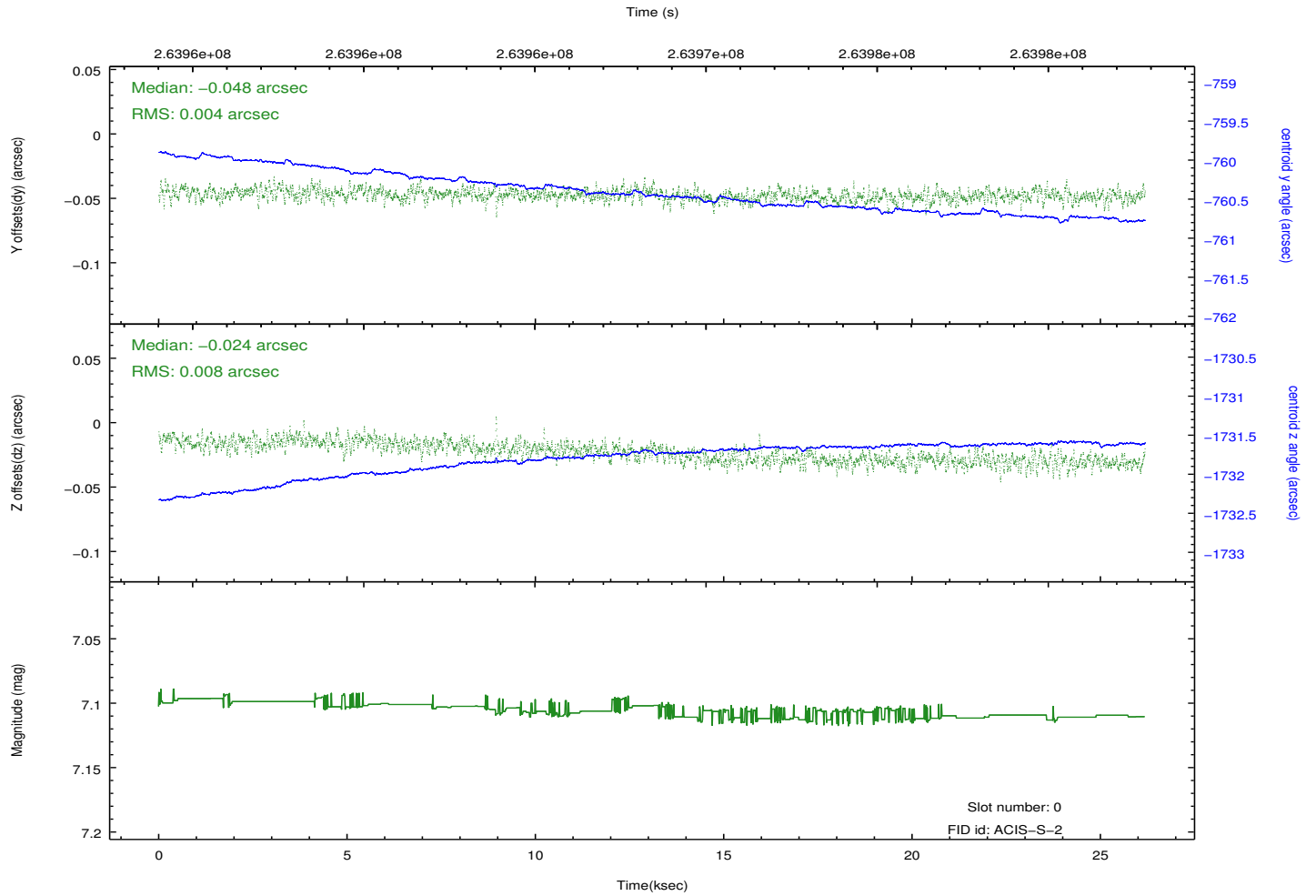
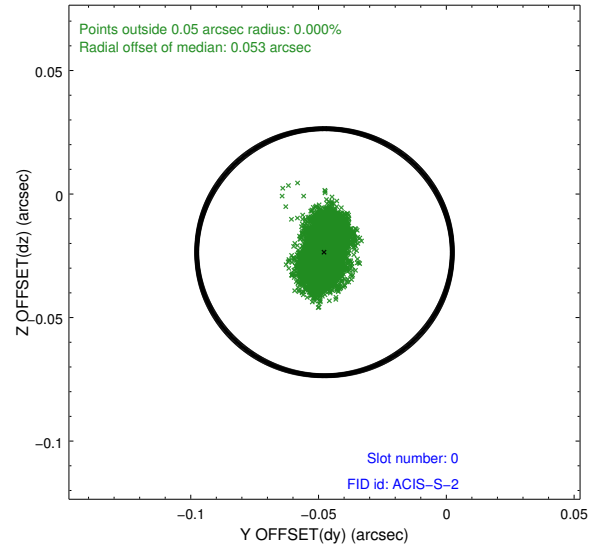
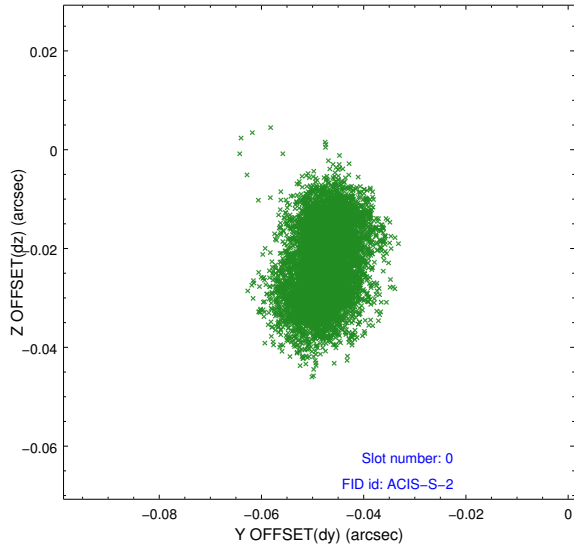


### 2.4.5 Slot 7

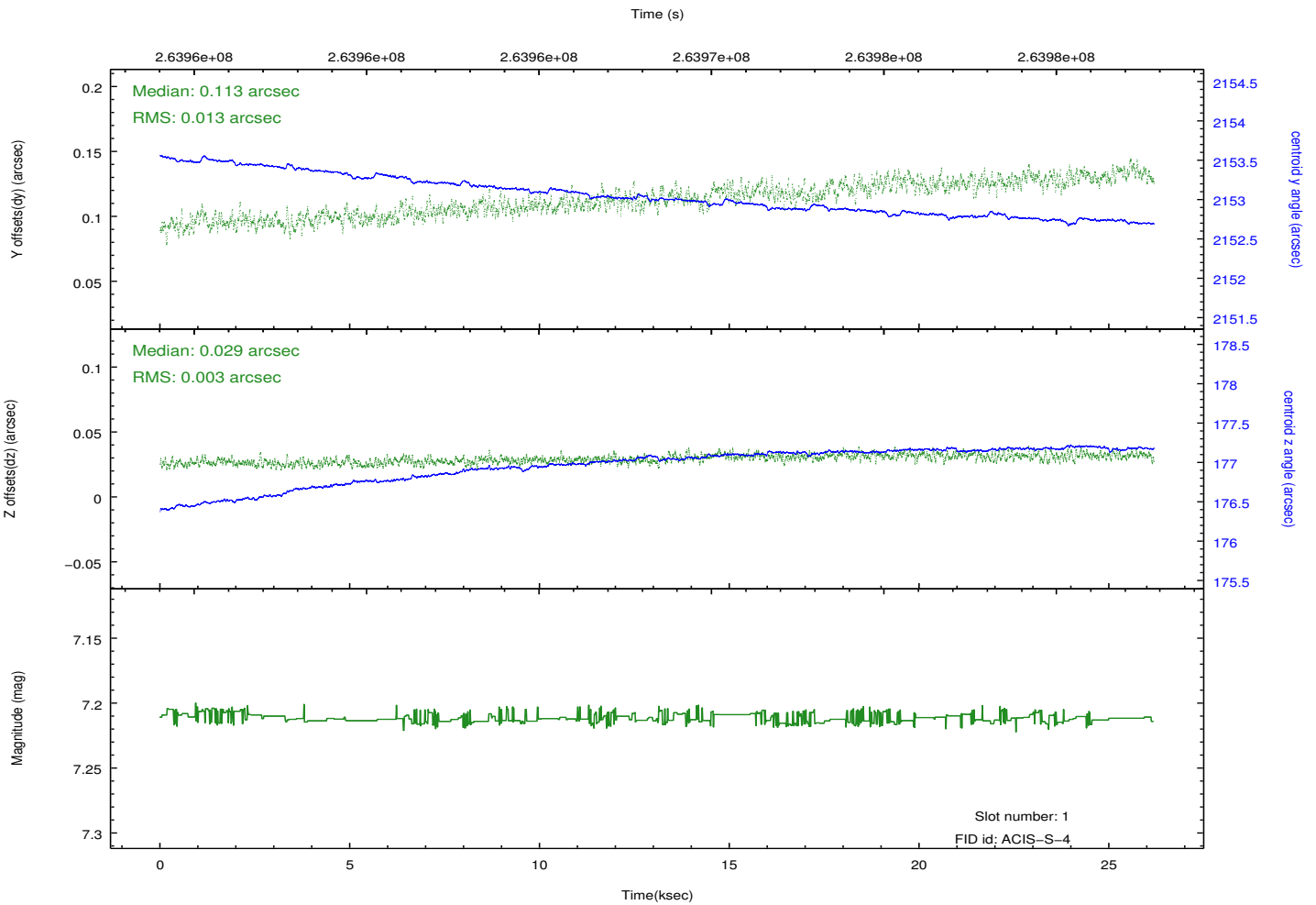
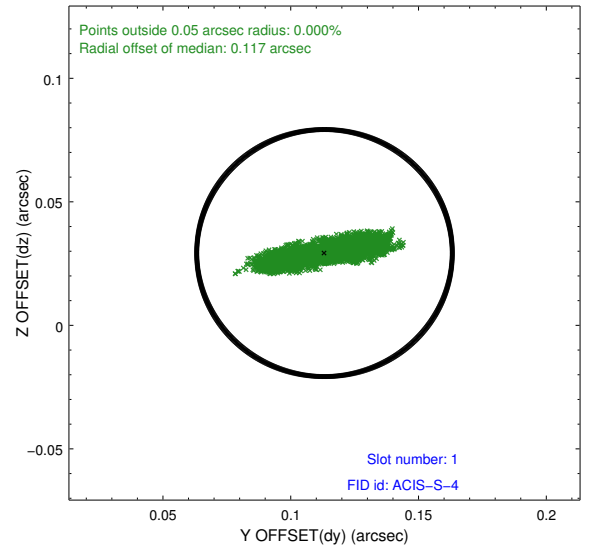
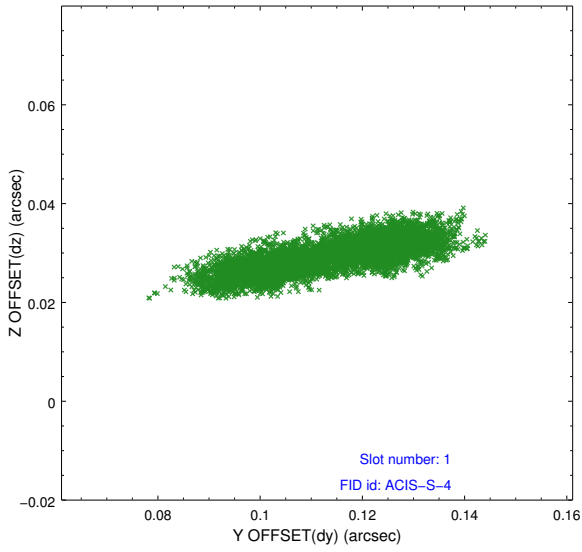


## 2.5 FID Slots

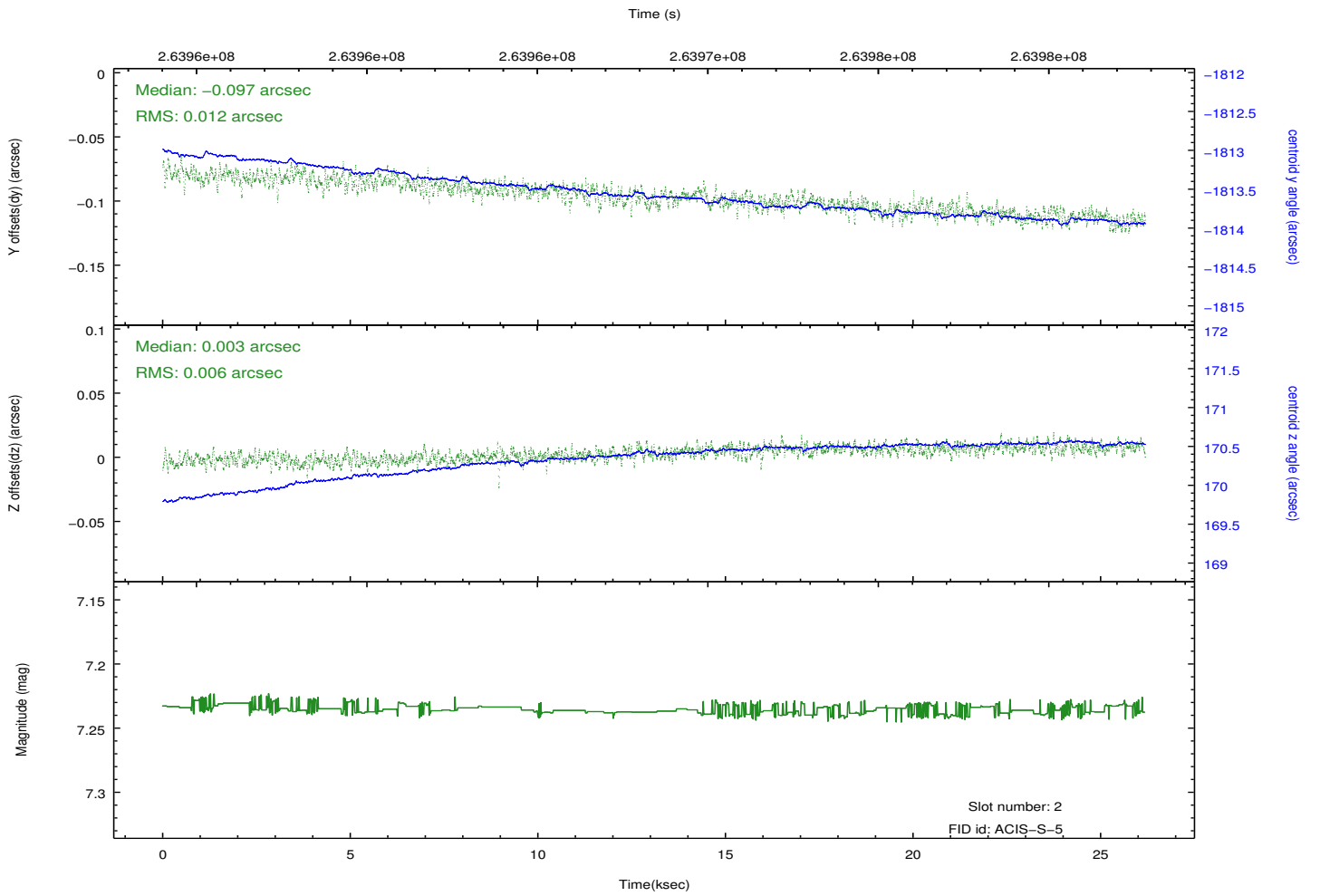
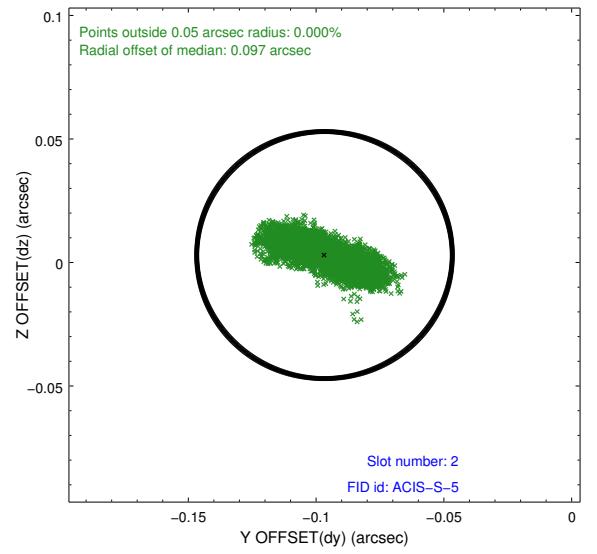
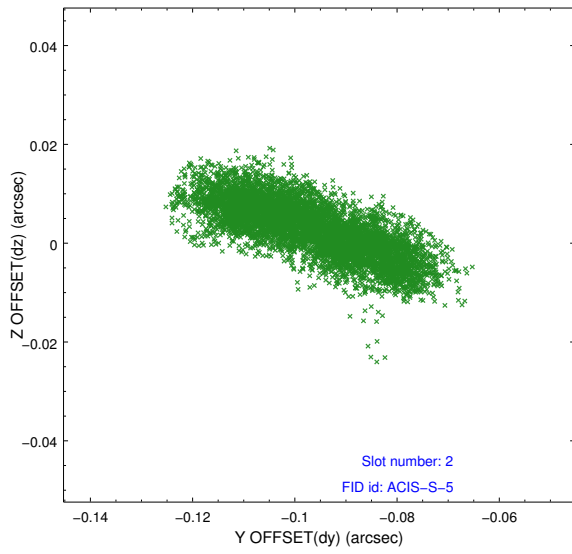
### 2.5.1 Slot 0



## 2.5.2 Slot 1



### 2.5.3 Slot 2



# A Summary

## A.1 Status

V&V Scientist	Jen Lauer
V&V Date (YYYY-MM-DD)	2012.04.03
V&V Edition	1
V&V Disposition and Status	OK
V&V Charge Time	26.1825999

## A.2 Comments