

# V&V Reference Report

## L2 ASCDS Version : 8.4.4

Observation 7405 - L2 Version 3  
Chandra X-Ray Center

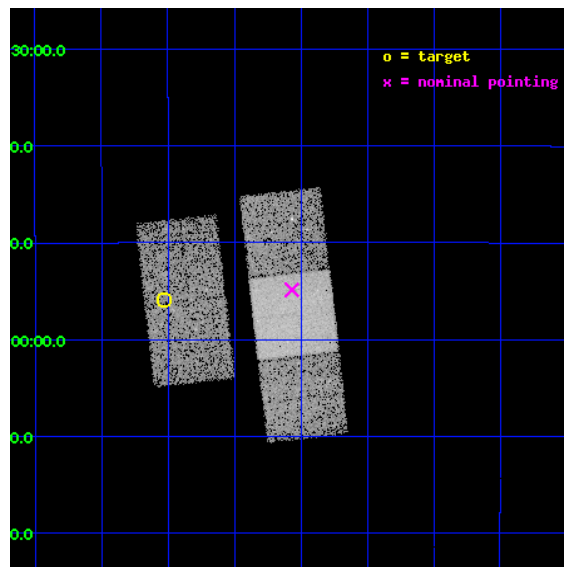
L2 Processing Date : Apr 19 2012

## Contents

<b>1</b>	<b>Front</b>	<b>2</b>
<b>2</b>	<b>OBI</b>	<b>3</b>
2.1	OBI . . . . .	3
2.1.1	Images . . . . .	3
2.1.2	Bias . . . . .	3
2.1.3	Parameters . . . . .	4
2.1.4	Events . . . . .	4
2.2	Compared Parameters . . . . .	5
2.3	Aspect . . . . .	6
2.4	Star Slots . . . . .	9
2.4.1	Slot 3 . . . . .	9
2.4.2	Slot 4 . . . . .	10
2.4.3	Slot 5 . . . . .	11
2.4.4	Slot 6 . . . . .	12
2.4.5	Slot 7 . . . . .	13
2.5	FID Slots . . . . .	14
2.5.1	Slot 0 . . . . .	14
2.5.2	Slot 1 . . . . .	15
2.5.3	Slot 2 . . . . .	16
<b>A</b>	<b>Summary</b>	<b>17</b>
A.1	Status . . . . .	17
A.2	Comments . . . . .	17

# 1 Front

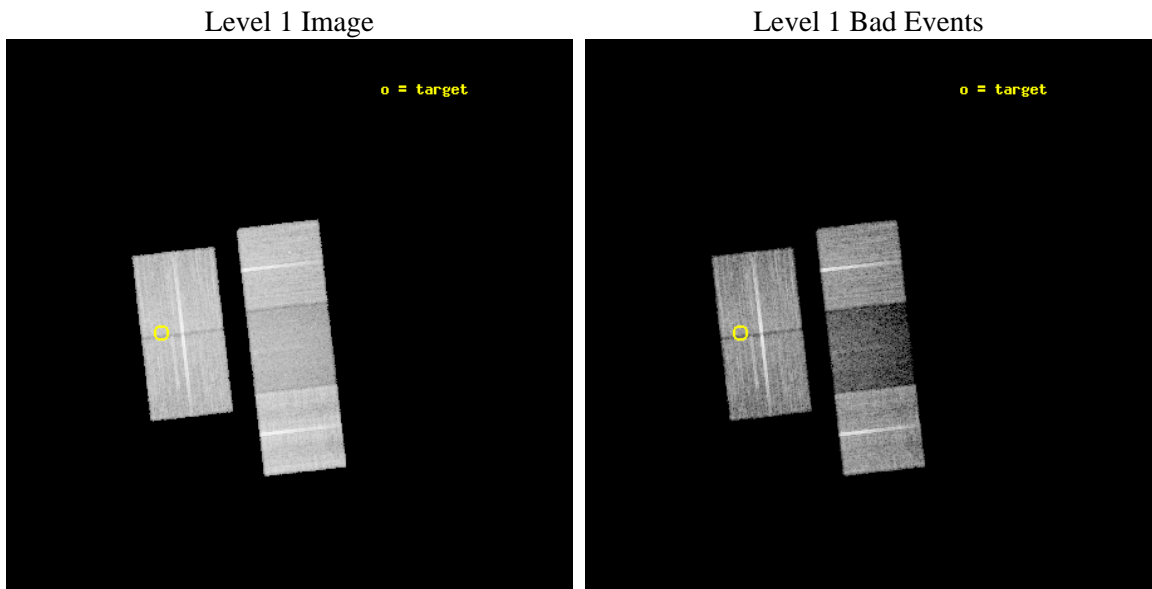
seq_num	100068	Sequence number
obs_id	7405	Observation id
title	X-Ray Observations of Jupiter in Support of the New Horizons Flyby	&#160
observer	Dr. G. Gladstone	Principal investigator
object	Jupiter	Source name
dtcycle	0	&#160
cycle	P	events from which exps? Prim/Second/Both
ra_targ	254.133375	Observer's specified target RA [deg]
dec_targ	-21.932222	Observer's specified target Dec [deg]
ra_nom	253.89226521217	Nominal RA [deg]
dec_nom	-21.914642514796	Nominal Dec [deg]
roll_nom	83.445223033655	Nominal Roll [deg]
revision	3	Processing version of data
ontime	17315.378000259	Sum of GTIs [s]
liveltime	17089.13983929	Livetime [s]
ontime2	17315.378000259	Sum of GTIs [s]
ontime3	17312.31911999	Sum of GTIs [s]
ontime6	17318.642080545	Sum of GTIs [s]
ontime7	17318.683120549	Sum of GTIs [s]
ontime8	17305.996039808	Sum of GTIs [s]
l2events	69547	Number of level 2 events



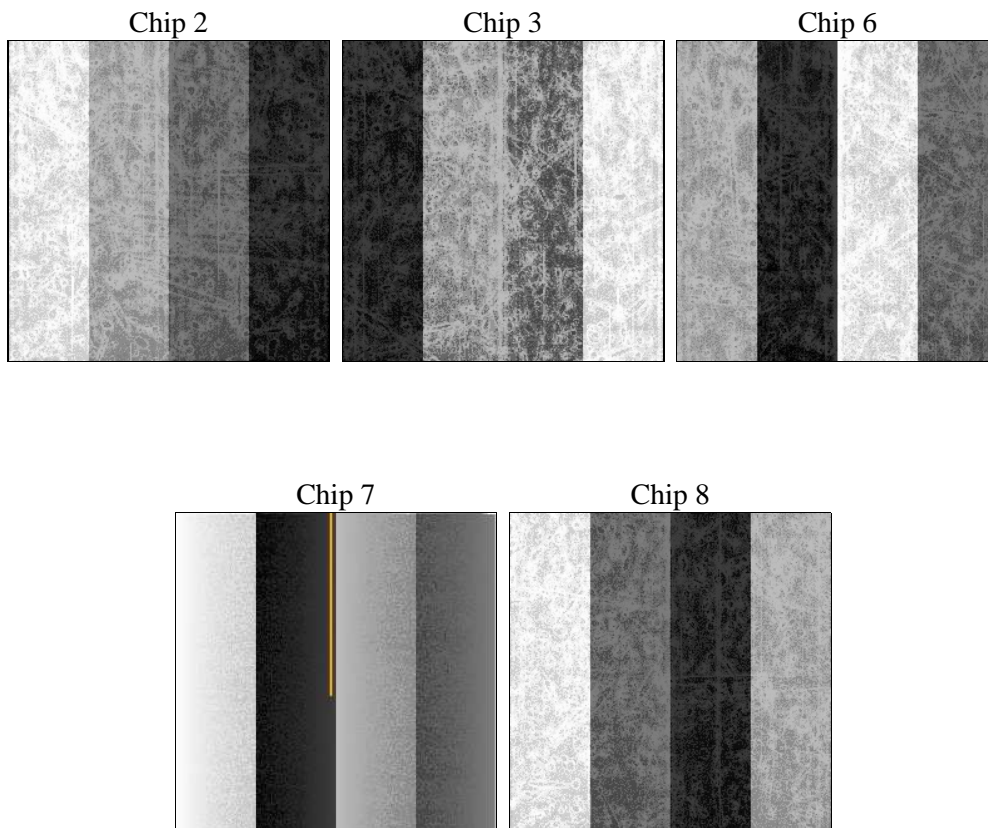
## 2 OBI

### 2.1 OBI

#### 2.1.1 Images



#### 2.1.2 Bias



### 2.1.3 Parameters

obi_num	0	Obi number	sched_exp_time	17544.000000	[s] Scheduled observation exposure time
ascdsver	8.4.4	Processing system revision	ontime	17315.378000259	Sum of GTIs [s]
caldsver	4.4.9	&#160	ontime2	17315.378000259	Sum of GTIs [s]
date	2012-04-19T14:46:07	Date and time of file creation	ontime3	17312.31911999	Sum of GTIs [s]
revision	3	Processing version of data	ontime6	17318.642080545	Sum of GTIs [s]
			ontime7	17318.683120549	Sum of GTIs [s]
			ontime8	17305.996039808	Sum of GTIs [s]
			l1events	541496	Number of level 1 events

### 2.1.4 Events

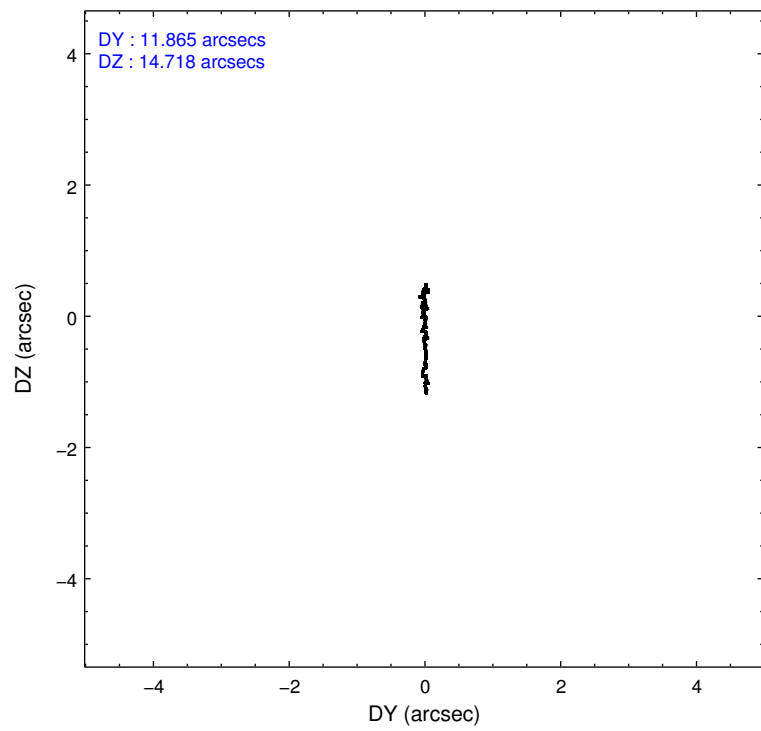
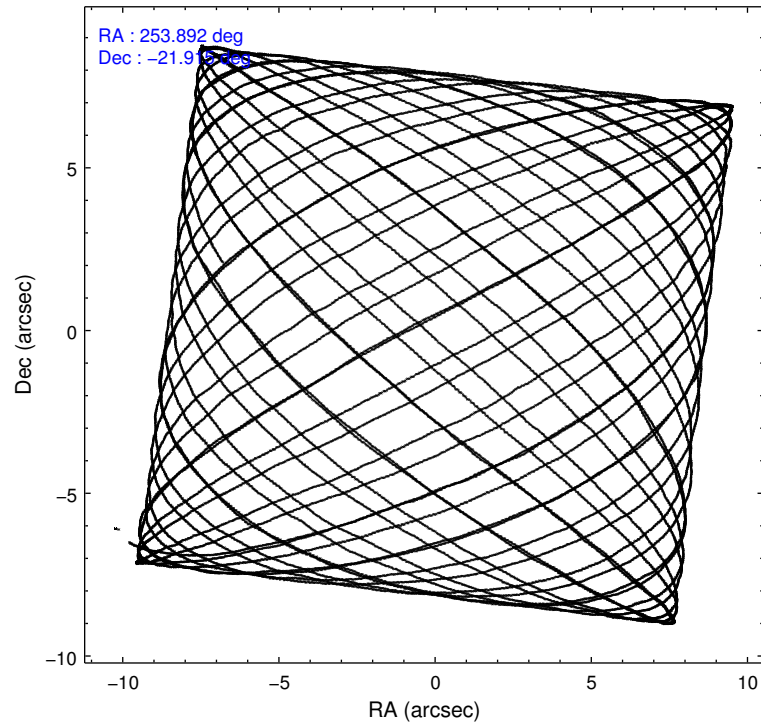
	ccd 2	ccd 3	ccd 6	ccd 7	ccd 8
level 1 events	117823	106520	113558	64611	138984
rejected events	107926	97242	102770	28750	103905
rejected %	91%	91%	90%	44%	74%

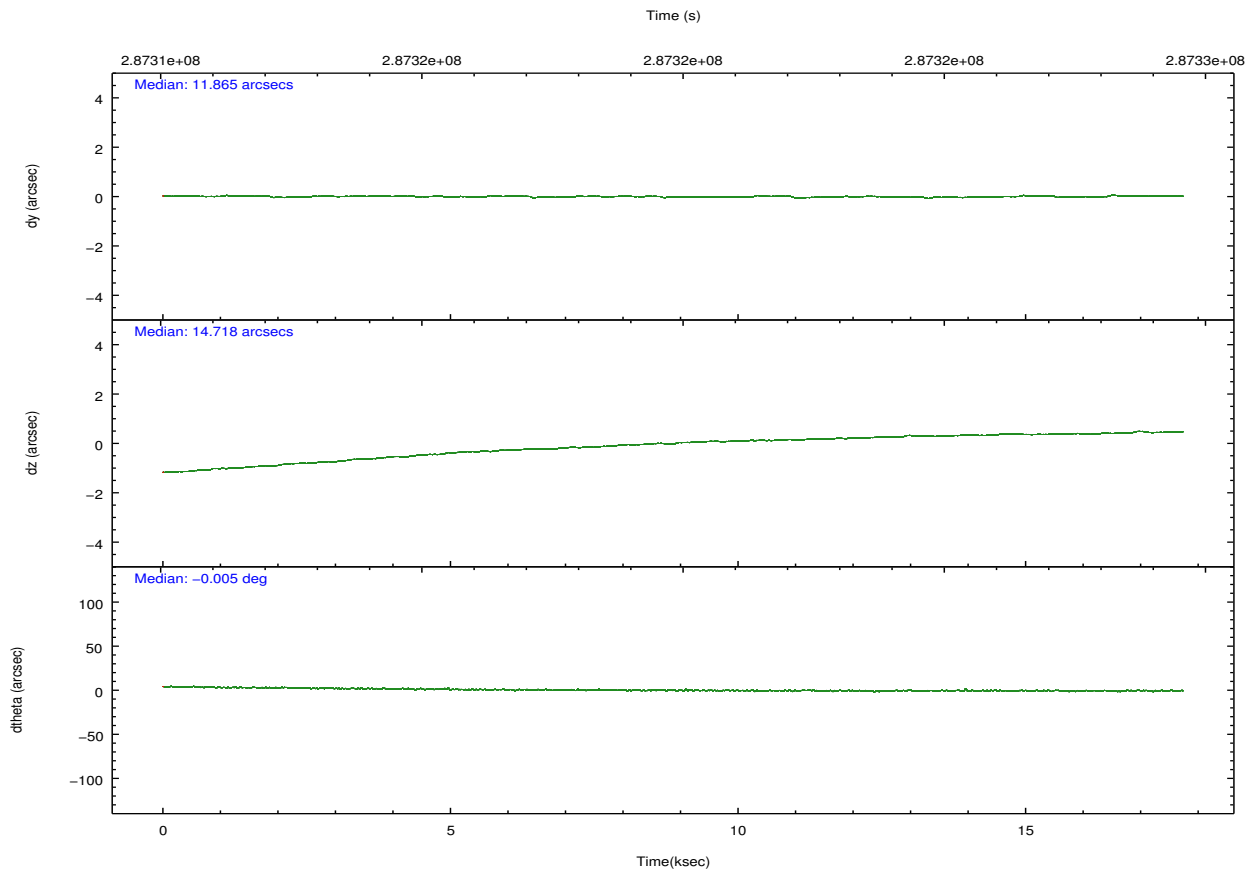
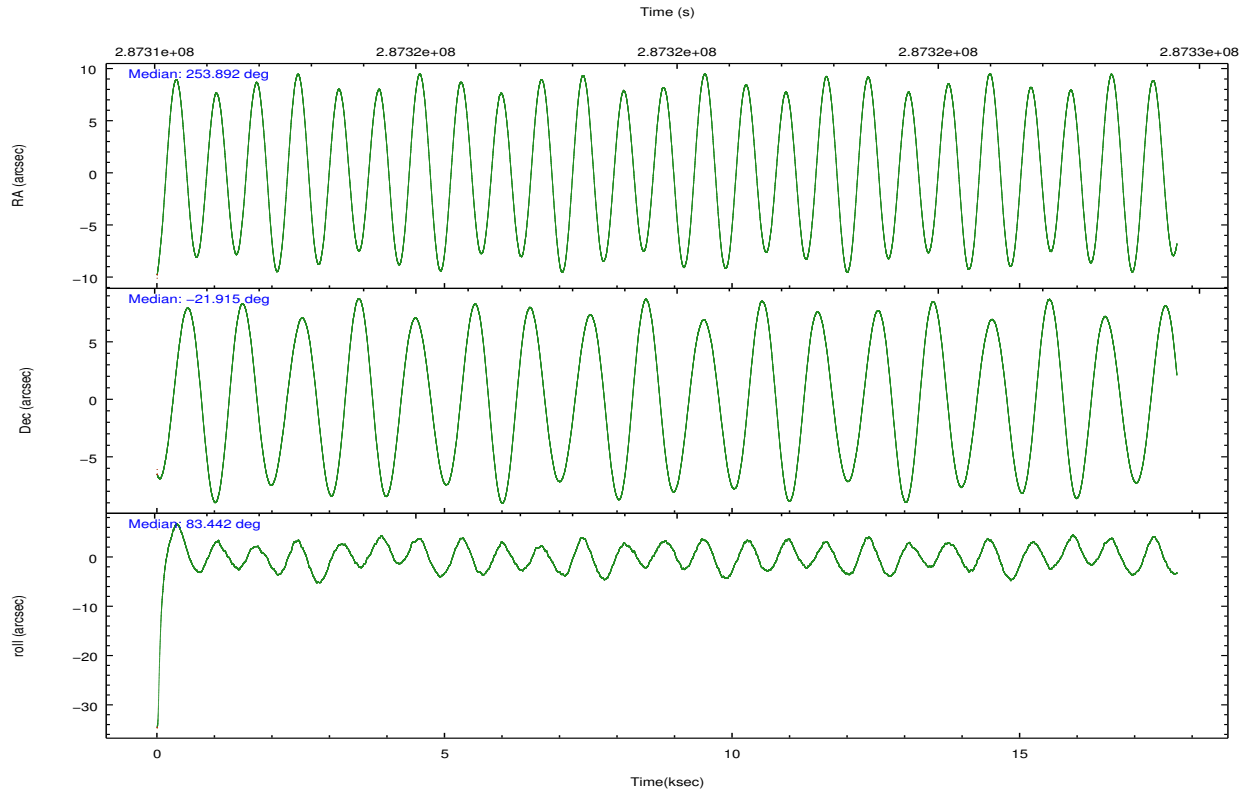
	ccd 2	ccd 3	ccd 6	ccd 7	ccd 8
grade 0 events	4140	3962	4644	4514	10114
	3%	3%	4%	6%	7%
grade 1 events	61	49	65	116	111
	0%	0%	0%	0%	0%
grade 2 events	2195	1835	2292	8484	8406
	1%	1%	2%	13%	6%
grade 3 events	1059	1064	1120	3263	3677
	0%	0%	0%	5%	2%
grade 4 events	1080	1008	1101	3275	3379
	0%	0%	0%	5%	2%
grade 5 events	1788	2231	2214	6512	3853
	1%	2%	1%	10%	2%
grade 6 events	1424	1412	1633	16335	9504
	1%	1%	1%	25%	6%
grade 7 events	106076	94959	100489	22112	99940
	90%	89%	88%	34%	71%

## 2.2 Compared Parameters

Parameter	Planned	Actual	Parameter	Planned	Actual
Instrument	ACIS	ACIS	Obspar format version number	7	7
Detector	ACIS-23678	ACIS-23678	Obspar file type	PREDICTED	ACTUAL
Grating	NONE	NONE	Obspar update status	NONE	UPDATED
Data mode	VFAINT	VFAINT	Number of optional ACIS chips dropped	0	0
Observation mode	POINTING	POINTING	On-chip summing requested	N	N
[deg] Pointing RA	253.904365	253.8922652121693	Subarray requested	NONE	NONE
[deg] Pointing Dec	-21.939594	-21.91464251479556	Alternating exposures requested	N	N
[deg] Pointing Roll	83.293132	83.44522303365486	[s] Primary exposure time	0.000000	3.1
[s] Window start time (MET)	287310665.184000	287310665.184000			
[s] Window stop time (MET)	287542865.184000	287542865.184000			
[mm] SIM focus pos	-0.684267	-0.6828225247311905			
[mm] SIM defocus	0	0.001444936568705701			
[mm] SIM translation stage pos	-190.132523	-190.1400660498719			
[mm] SIM translation stage offset	0	0.00754346686406393			
[s] Observation start time (MET)	287311136.184000	287310649.14968			
Observation start date	2007-02-08T08:37:51	2007-02-08T08:30:49			
[s] Observation end time (MET)	287328680.184000	287329616.77558			
Observation end date	2007-02-08T13:30:15	2007-02-08T13:46:56			
Read mode	TIMED	TIMED			

## 2.3 Aspect



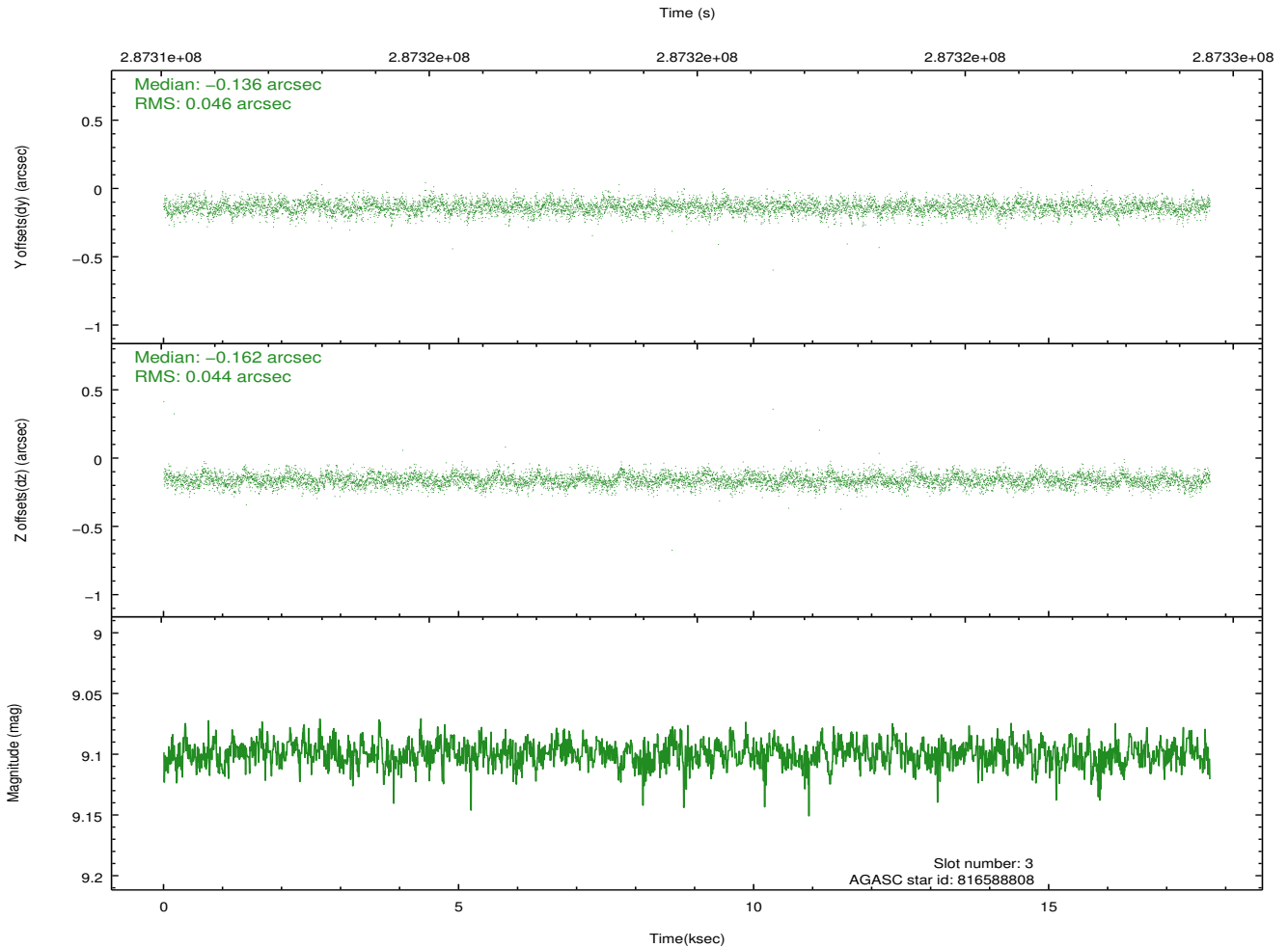
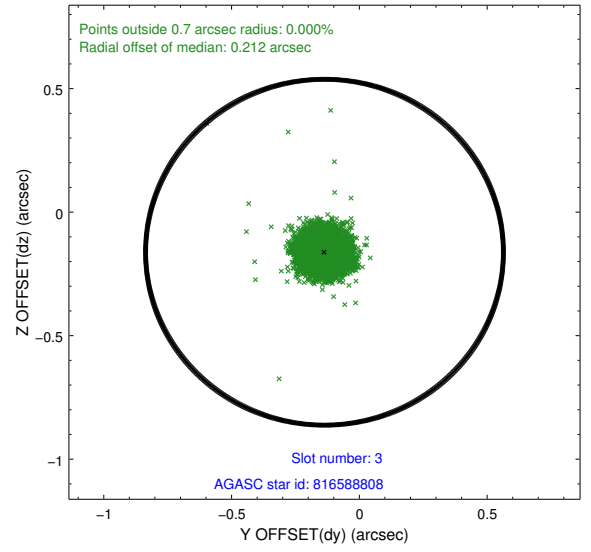
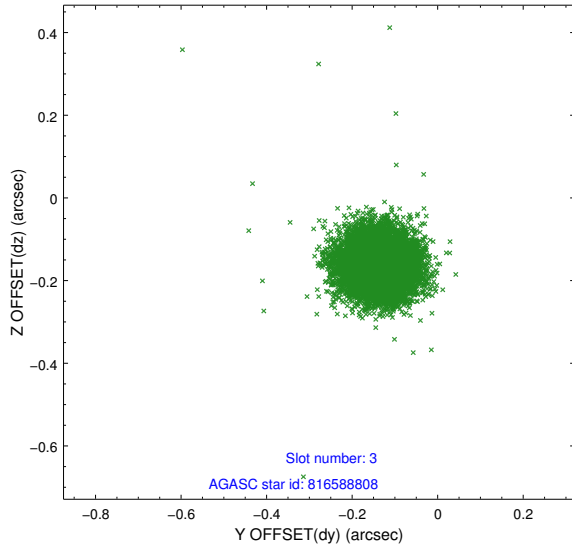


### Slot Statistics

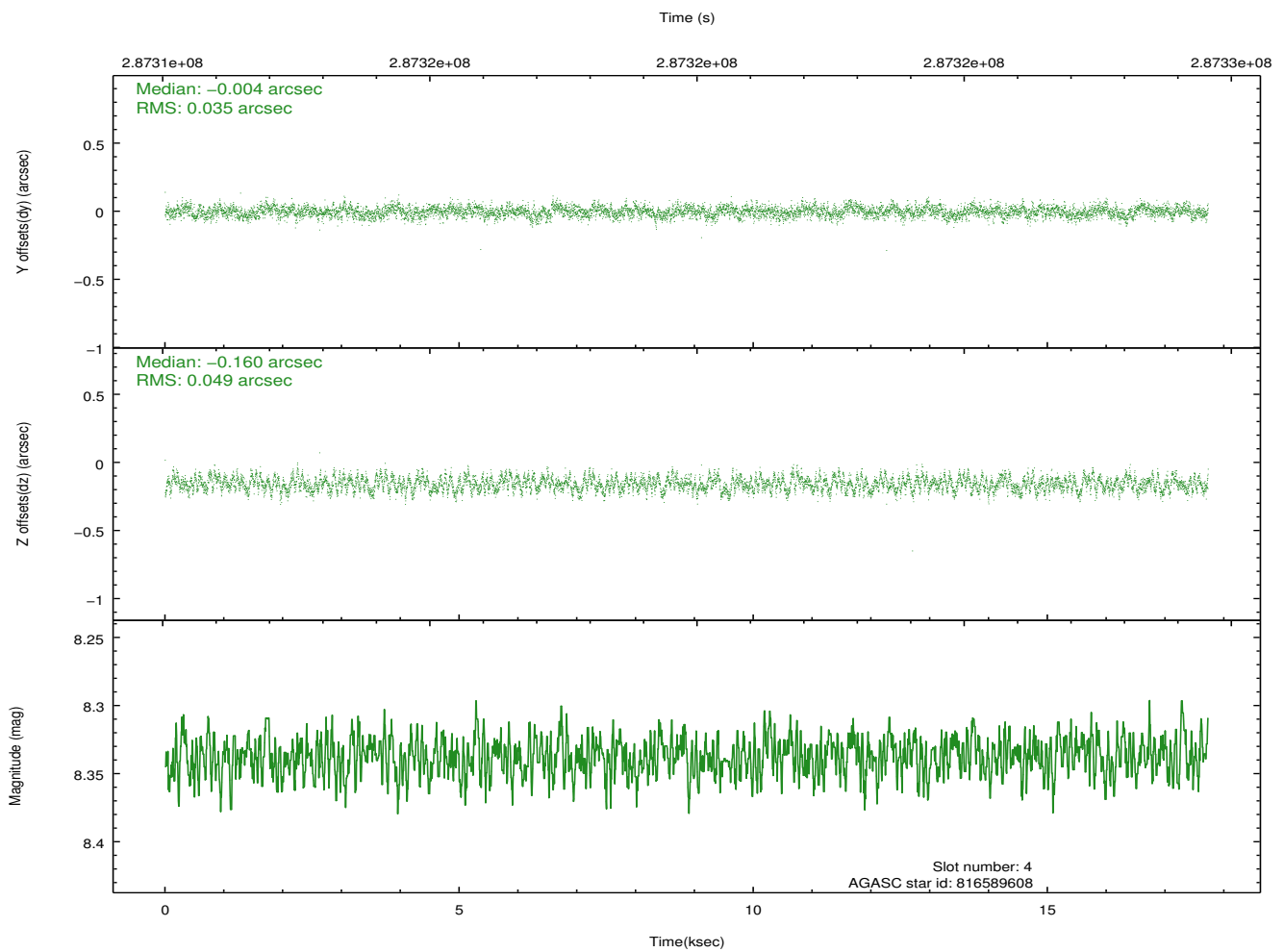
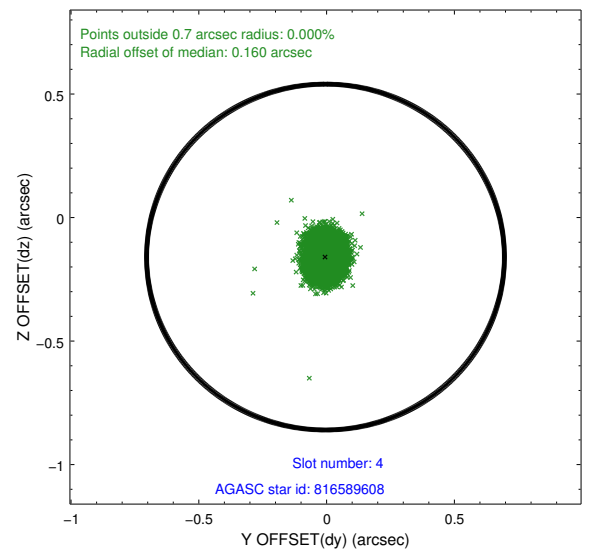
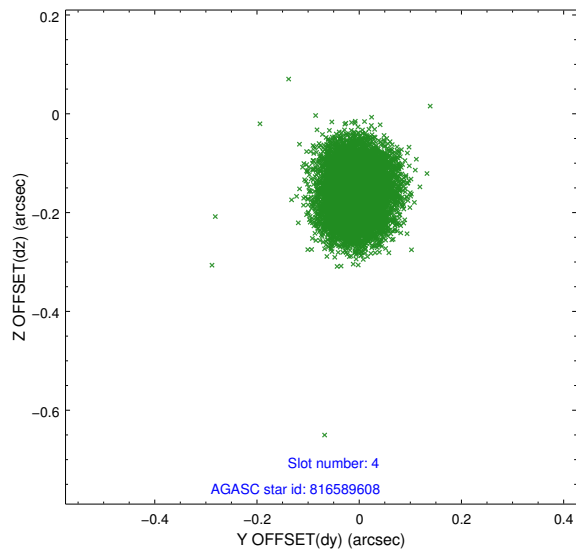
slot	status	id	mag	n_pts	med_dy	med_dz	dr1	dr2	ra	dec	mean_y	mean_z
0	FID	ACIS-S-2	7.09	4325	-0.050	-0.040	0.014	0.026	0.000000	0.000000	-764.78	-1736.01
1	FID	ACIS-S-4	7.20	4325	0.146	0.035	0.006	0.013	0.000000	0.000000	2148.57	172.34
2	FID	ACIS-S-5	7.22	4325	-0.127	0.013	0.013	0.025	0.000000	0.000000	-1817.42	166.22
3	GUIDE	816588808	9.10	8644	-0.136	-0.162	0.066	0.108	253.546492	-21.286182	2194.44	1466.96
4	GUIDE	816589608	8.34	8645	-0.004	-0.160	0.064	0.101	253.659974	-21.879606	118.91	836.10
5	GUIDE	816720016	8.27	8647	-0.210	0.186	0.064	0.105	254.491820	-21.386364	2204.43	-1723.19
6	GUIDE	816723288	7.83	8648	0.049	-0.019	0.059	0.095	254.188785	-21.796597	622.00	-884.29
7	GUIDE	892600464	8.89	8645	0.305	0.156	0.065	0.105	254.248920	-22.576721	-2144.85	-1405.58

## 2.4 Star Slots

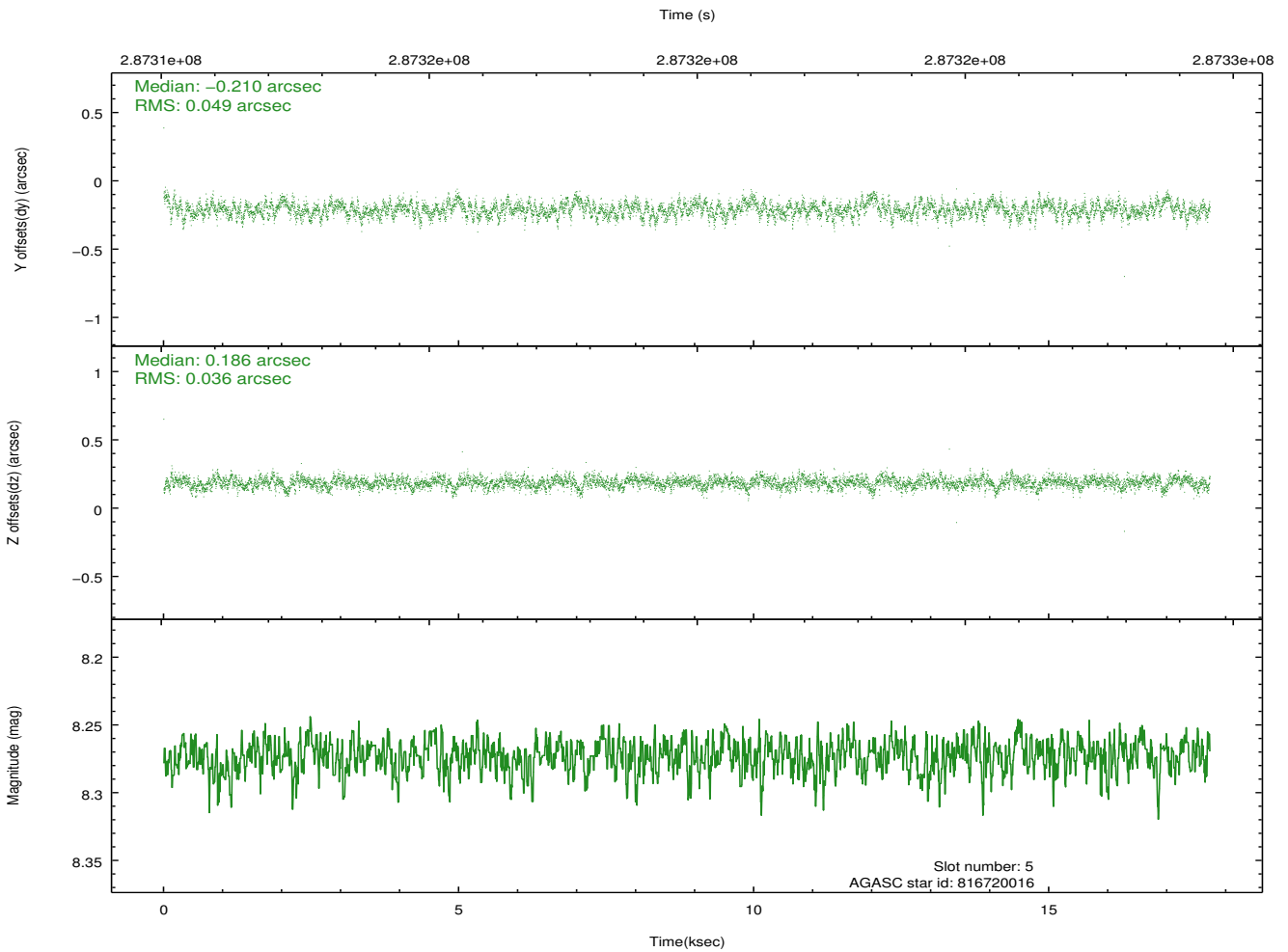
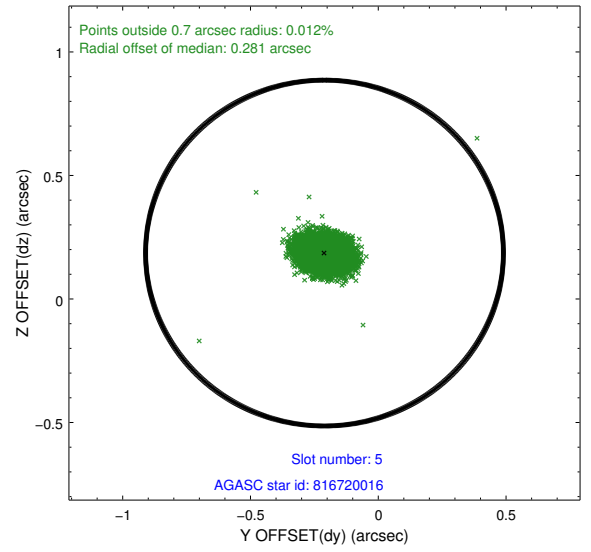
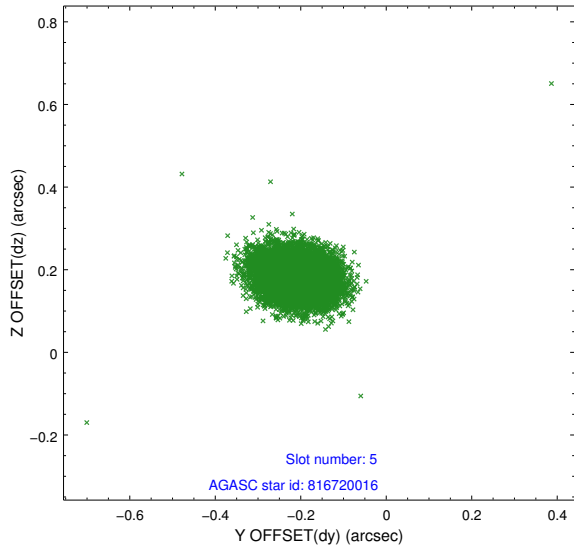
### 2.4.1 Slot 3



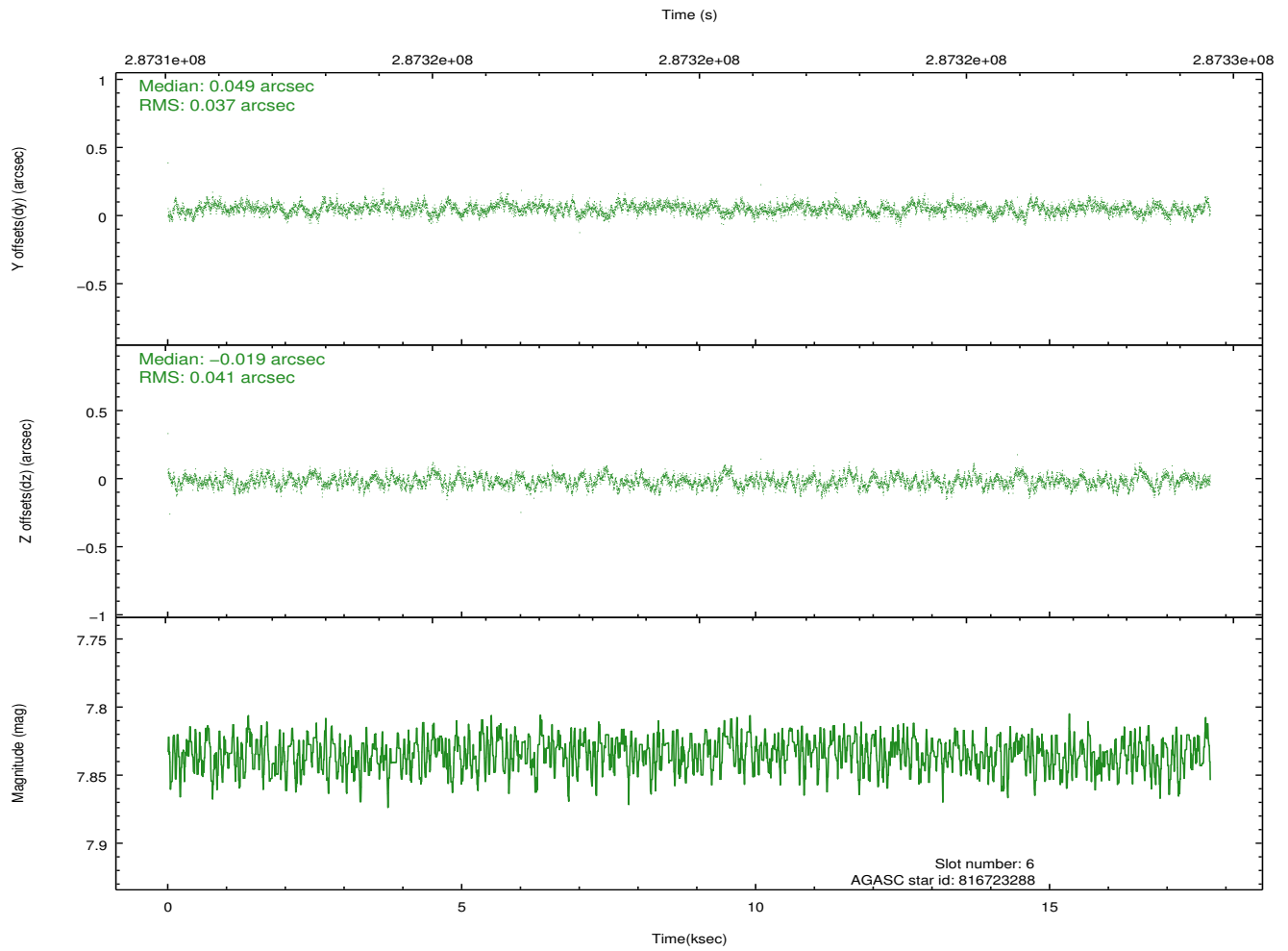
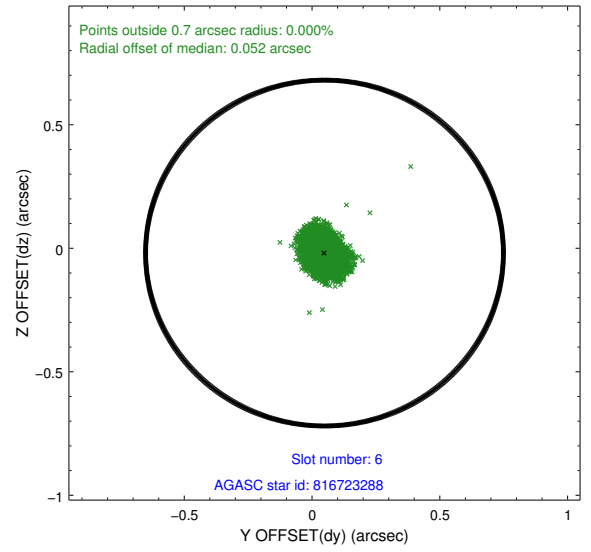
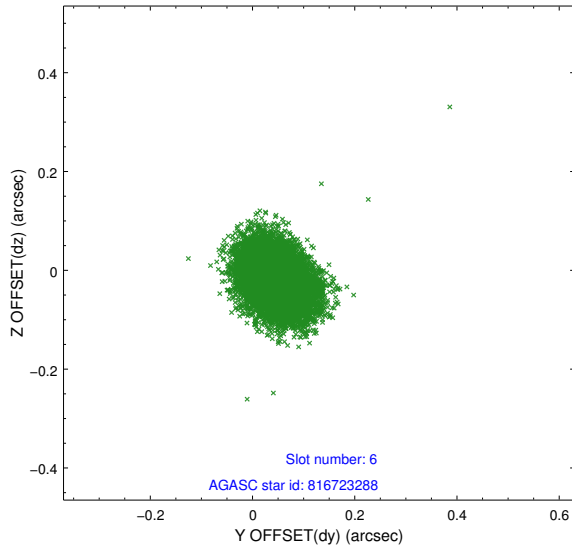
## 2.4.2 Slot 4



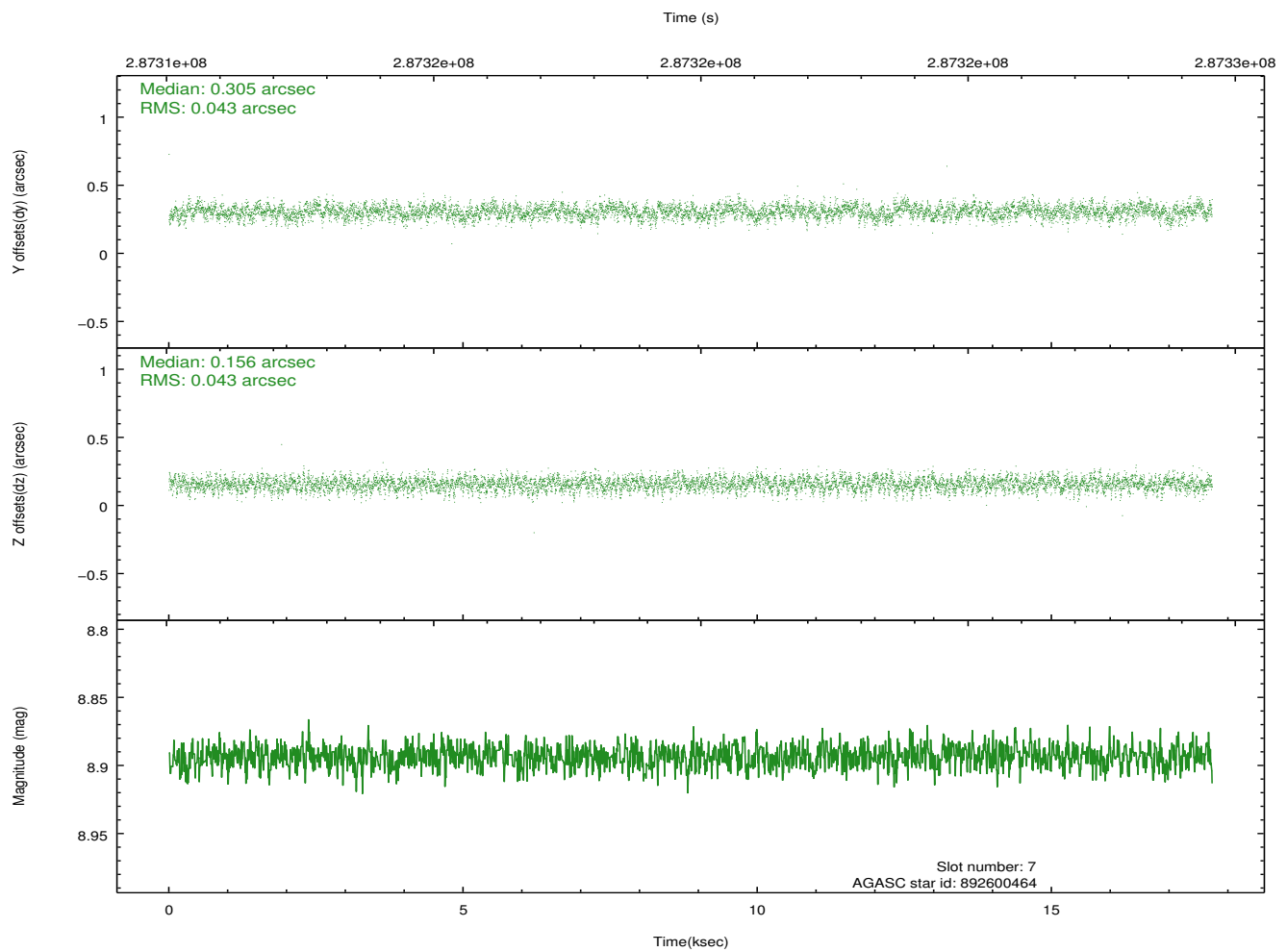
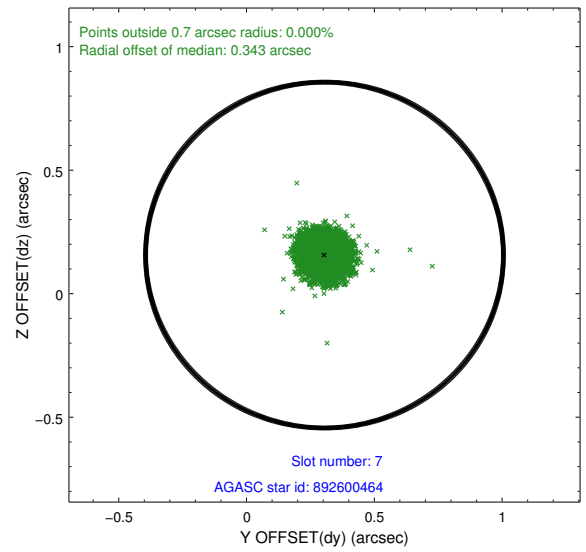
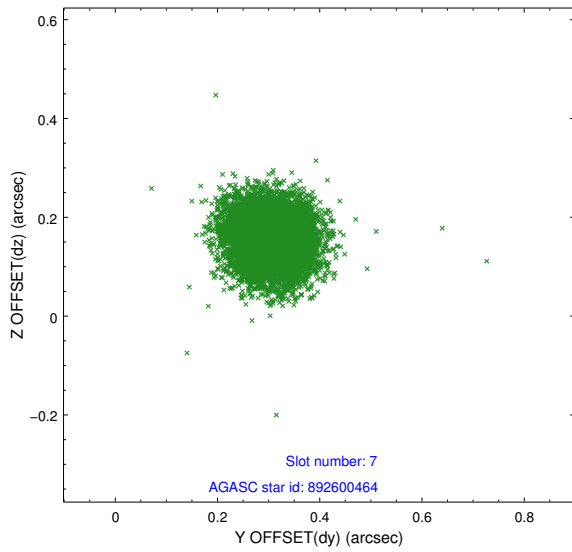
### 2.4.3 Slot 5



### 2.4.4 Slot 6

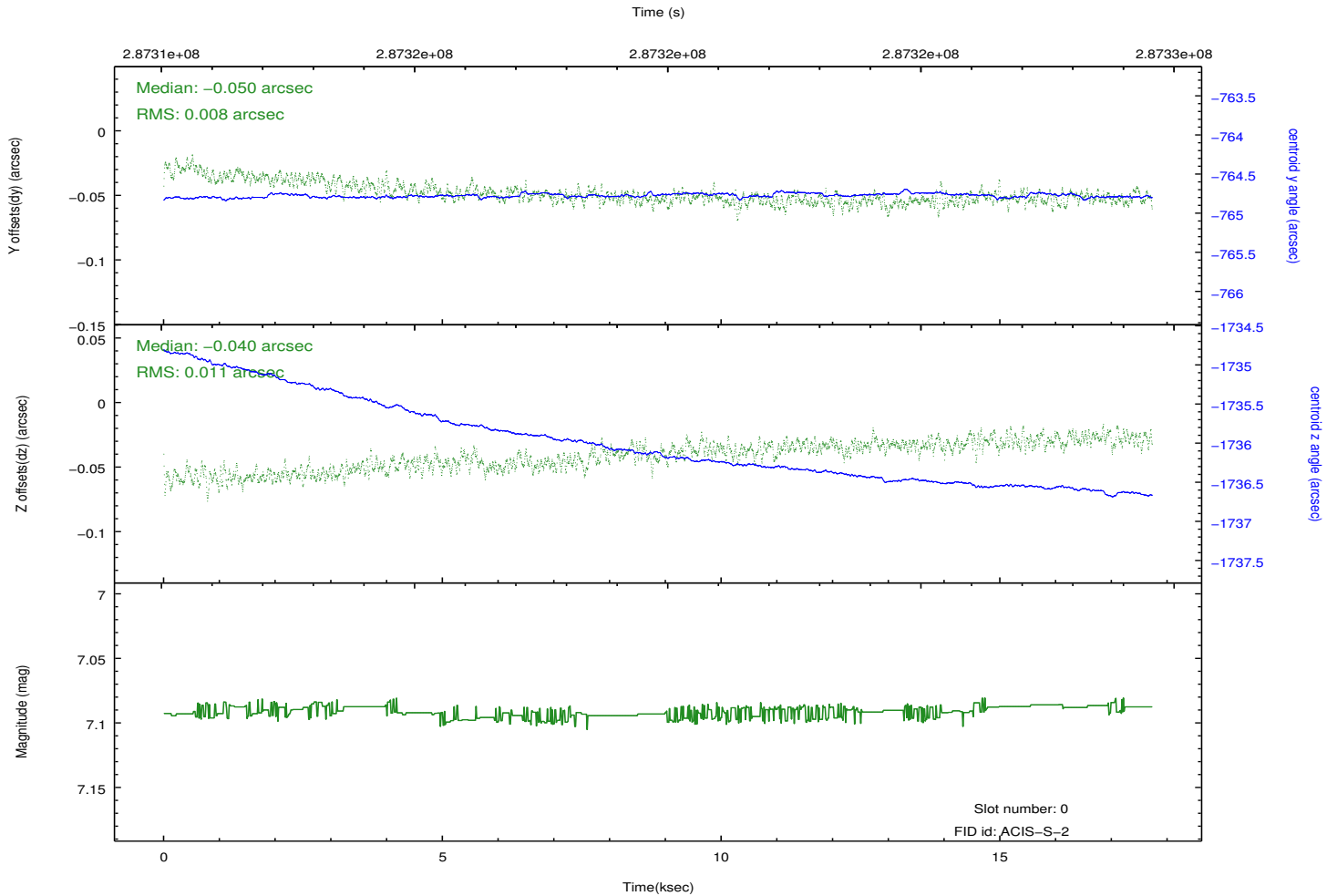
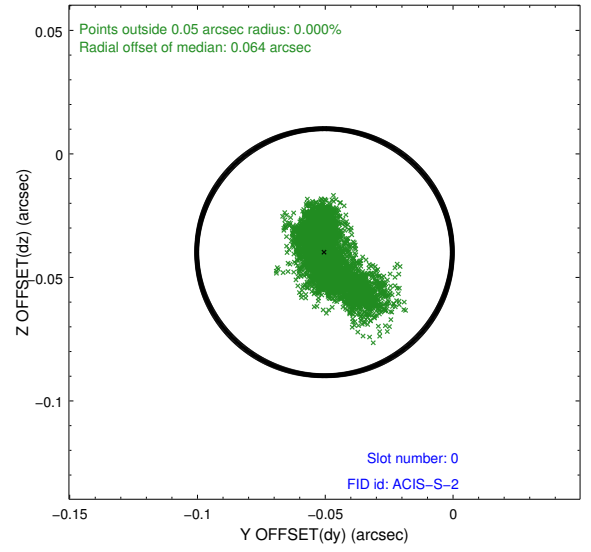
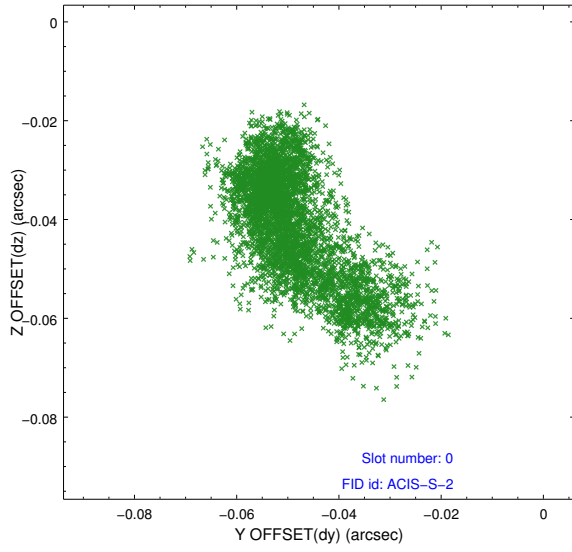


### 2.4.5 Slot 7

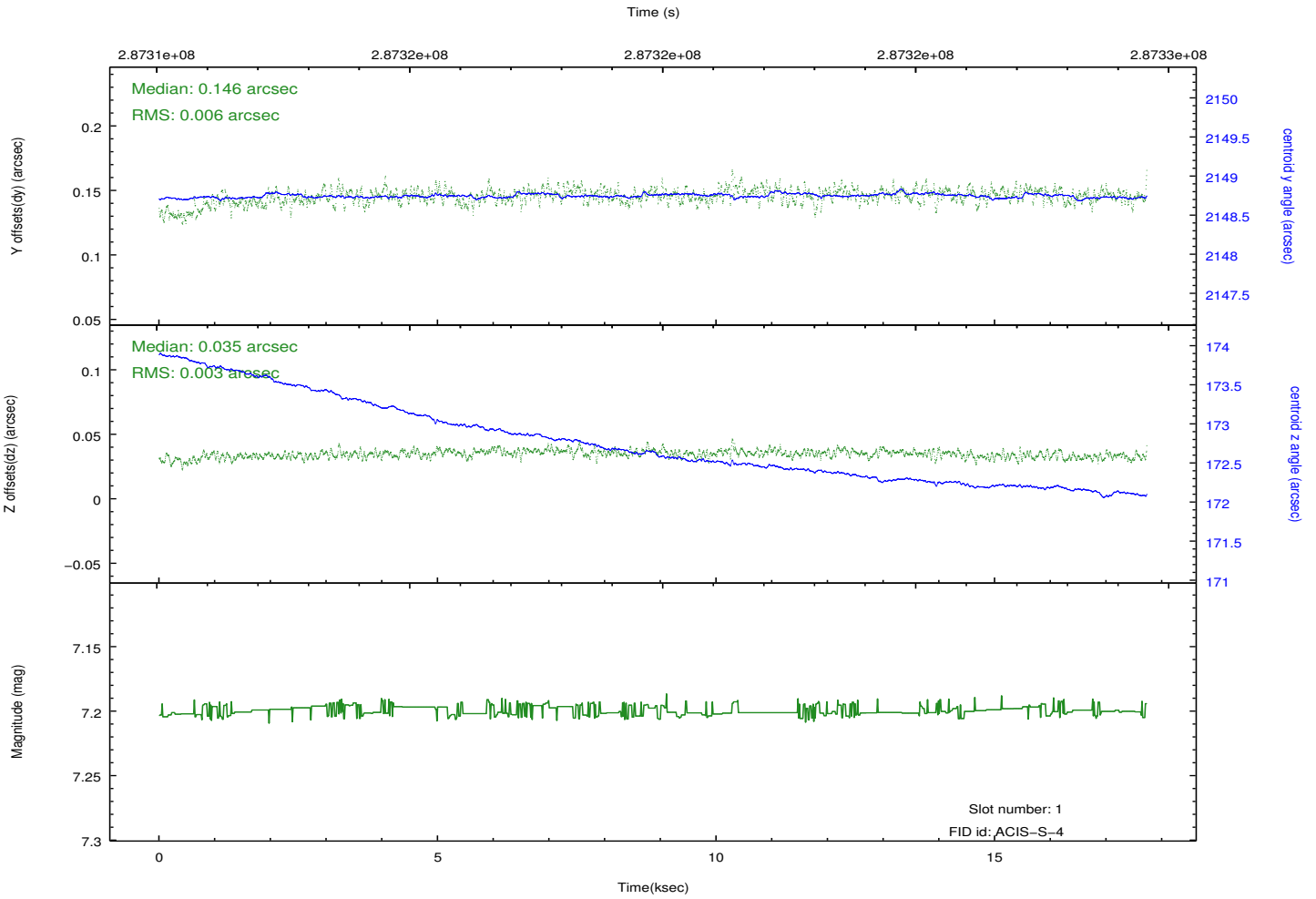
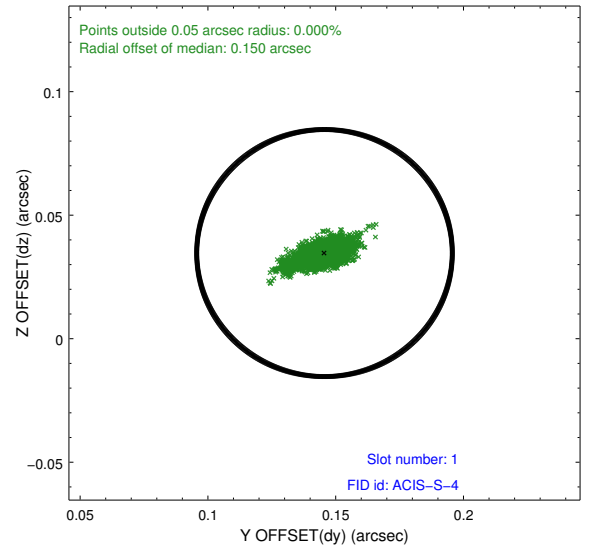
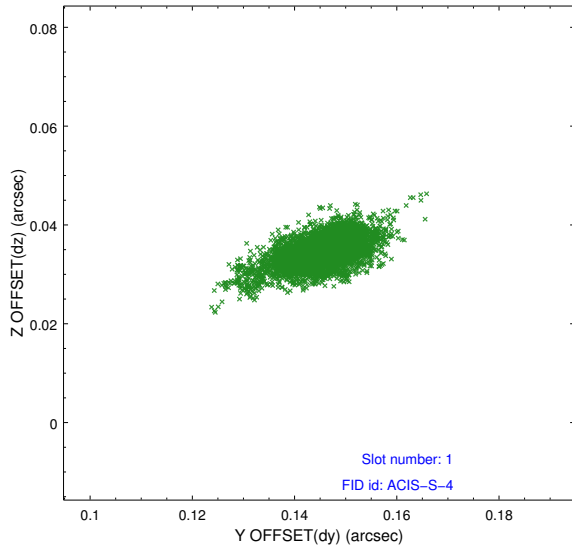


## 2.5 FID Slots

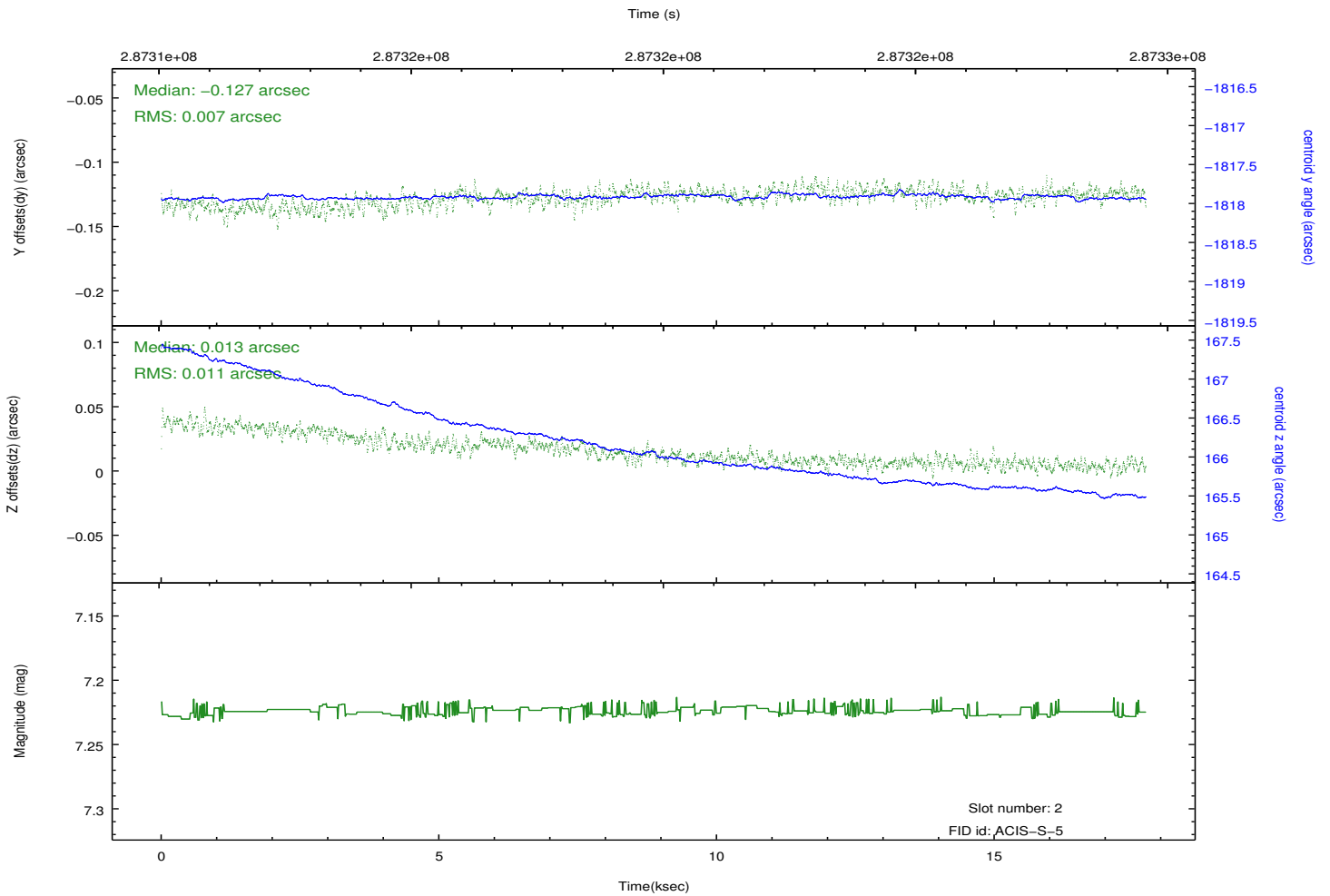
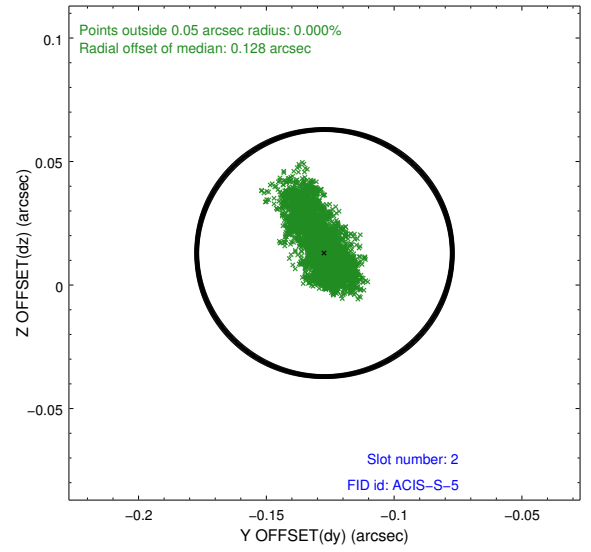
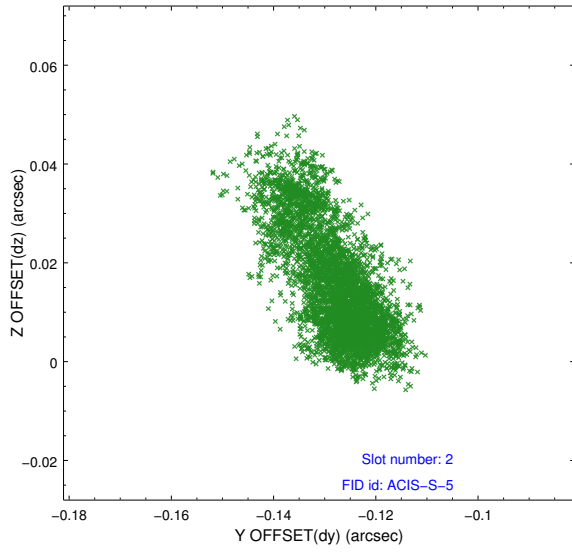
### 2.5.1 Slot 0



## 2.5.2 Slot 1



### 2.5.3 Slot 2



# A Summary

## A.1 Status

V&V Scientist	Beth Sundheim
V&V Date (YYYY-MM-DD)	2012.04.20
V&V Edition	1
V&V Disposition and Status	OK
V&V Charge Time	17.3165591

## A.2 Comments

Joint proposal with XMM.