

V&V Reference Report

L2 ASCDS Version : 8.4.3.1

Observation 7915 - L2 Version 2
Chandra X-Ray Center

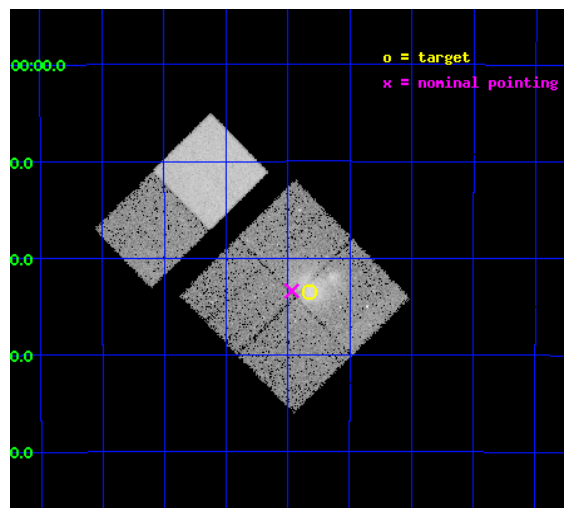
L2 Processing Date : Apr 13 2012

Contents

1	Front	2
2	OBI	3
2.1	OBI	3
2.1.1	Images	3
2.1.2	Bias	3
2.1.3	Parameters	4
2.1.4	Events	4
2.2	Compared Parameters	5
2.3	Aspect	6
2.4	Star Slots	9
2.4.1	Slot 3	9
2.4.2	Slot 4	10
2.4.3	Slot 5	11
2.4.4	Slot 6	12
2.4.5	Slot 7	13
2.5	FID Slots	14
2.5.1	Slot 0	14
2.5.2	Slot 1	15
2.5.3	Slot 2	16
A	Summary	17
A.1	Status	17
A.2	Comments	17

1 Front

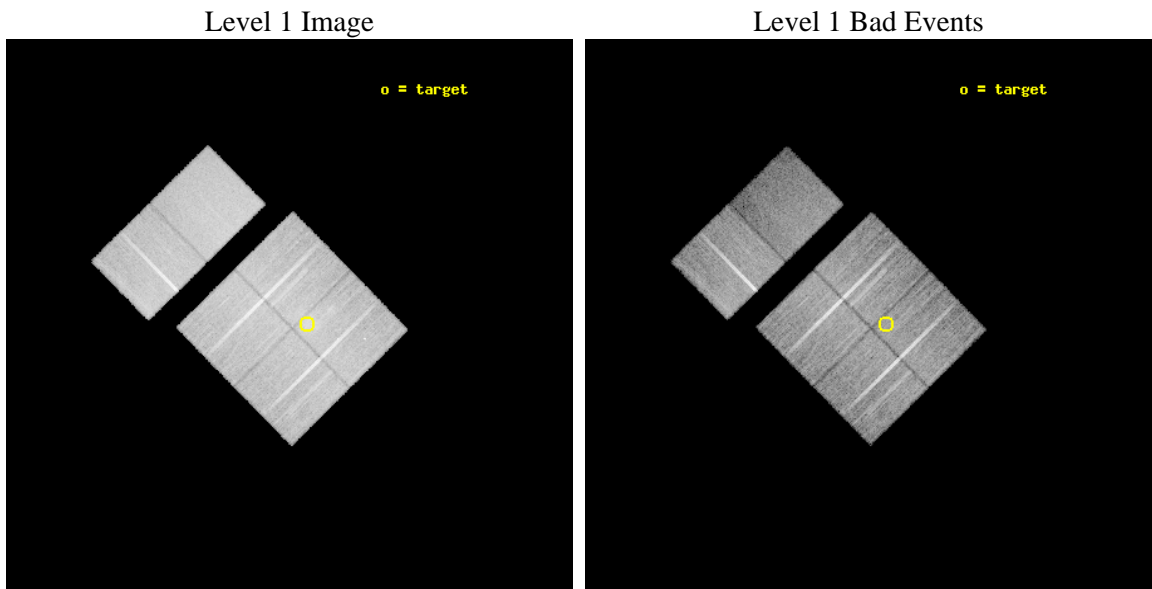
seq_num	800633	Sequence number
obs_id	7915	Observation id
title	The Dynamics of the Unusually Violent Merger in Abell 2744	Proposa
observer	Joshua Kempner	Principal investigator
object	Abell 2744	Source name
dtycycle	0	
cycle	P	events from which exps? Prim/Second/Both
ra_targ	3.580833	Observer's specified target RA [deg]
dec_targ	-30.391528	Observer's specified target Dec [deg]
ra_nom	3.6170007220745	Nominal RA [deg]
dec_nom	-30.389795154797	Nominal Dec [deg]
roll_nom	315.47282728106	Nominal Roll [deg]
revision	2	Processing version of data
ontime	18857.59992981	Sum of GTIs [s]
livetime	18618.813644815	Livetime [s]
ontime0	18857.59992981	Sum of GTIs [s]
ontime1	18857.59992981	Sum of GTIs [s]
ontime2	18857.59992981	Sum of GTIs [s]
ontime3	18857.59992981	Sum of GTIs [s]
ontime6	18857.59992981	Sum of GTIs [s]
ontime7	18857.59992981	Sum of GTIs [s]
l2events	143745	Number of level 2 events



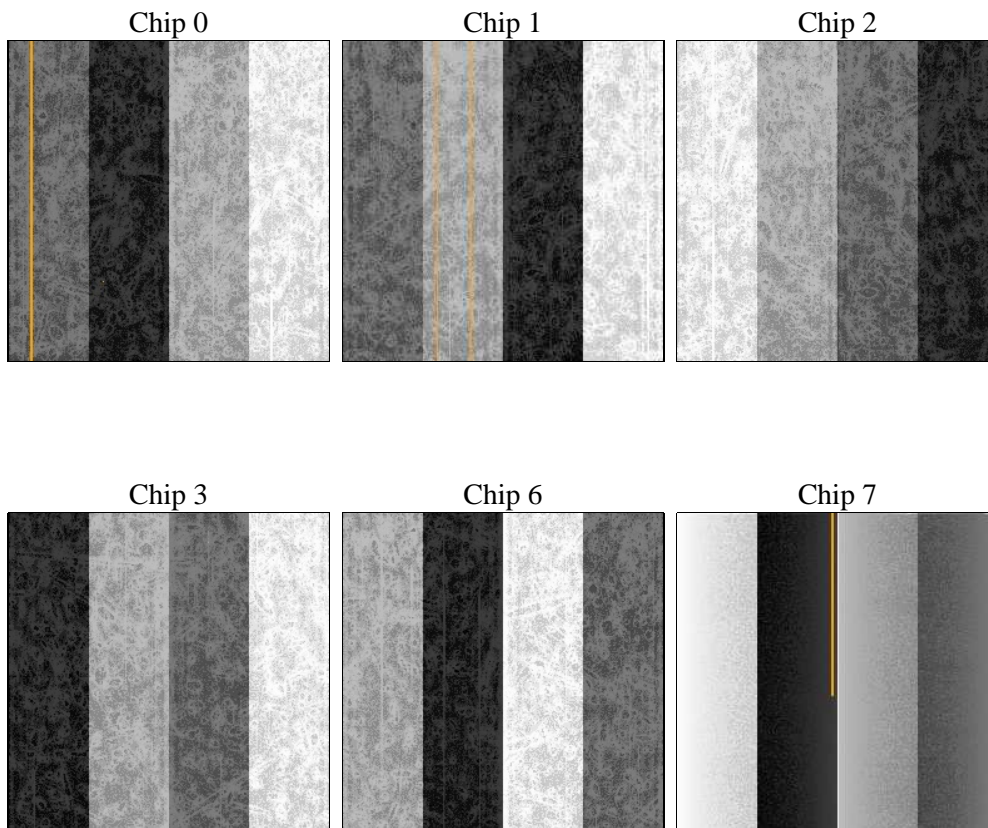
2 OBI

2.1 OBI

2.1.1 Images



2.1.2 Bias



2.1.3 Parameters

obi_num	0	Obi number	sched_exp_time	18693.412000	[s] Scheduled observation exposure time
ascdsver	8.4.3.1	Processing system revision	ontime	18857.59992981	Sum of GTIs [s]
caldbver	4.4.9	 	ontime0	18857.59992981	Sum of GTIs [s]
date	2012-04-13T02:05:26	Date and time of file creation	ontime1	18857.59992981	Sum of GTIs [s]
revision	2	Processing version of data	ontime2	18857.59992981	Sum of GTIs [s]
			ontime3	18857.59992981	Sum of GTIs [s]
			ontime6	18857.59992981	Sum of GTIs [s]
			ontime7	18857.59992981	Sum of GTIs [s]
			l1events	896700	Number of level 1 events

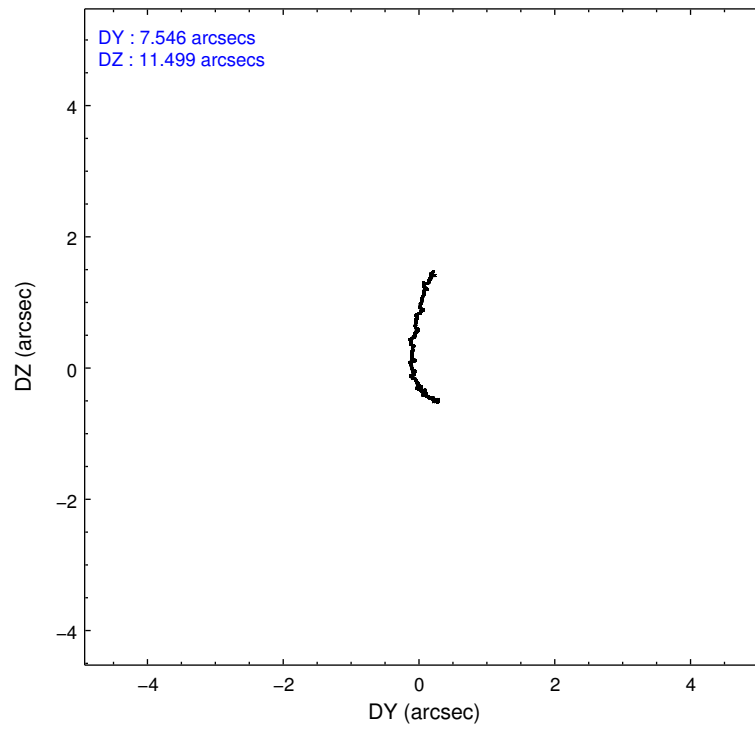
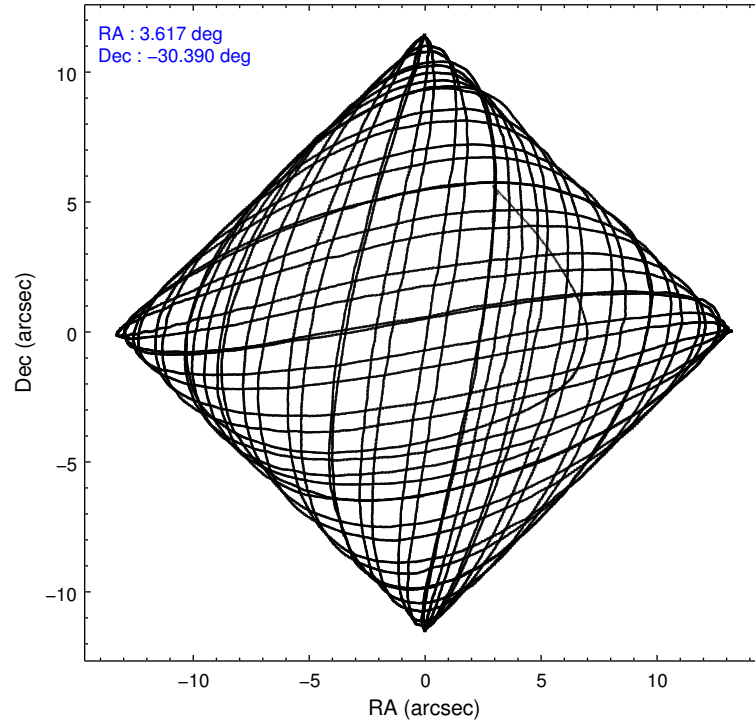
2.1.4 Events

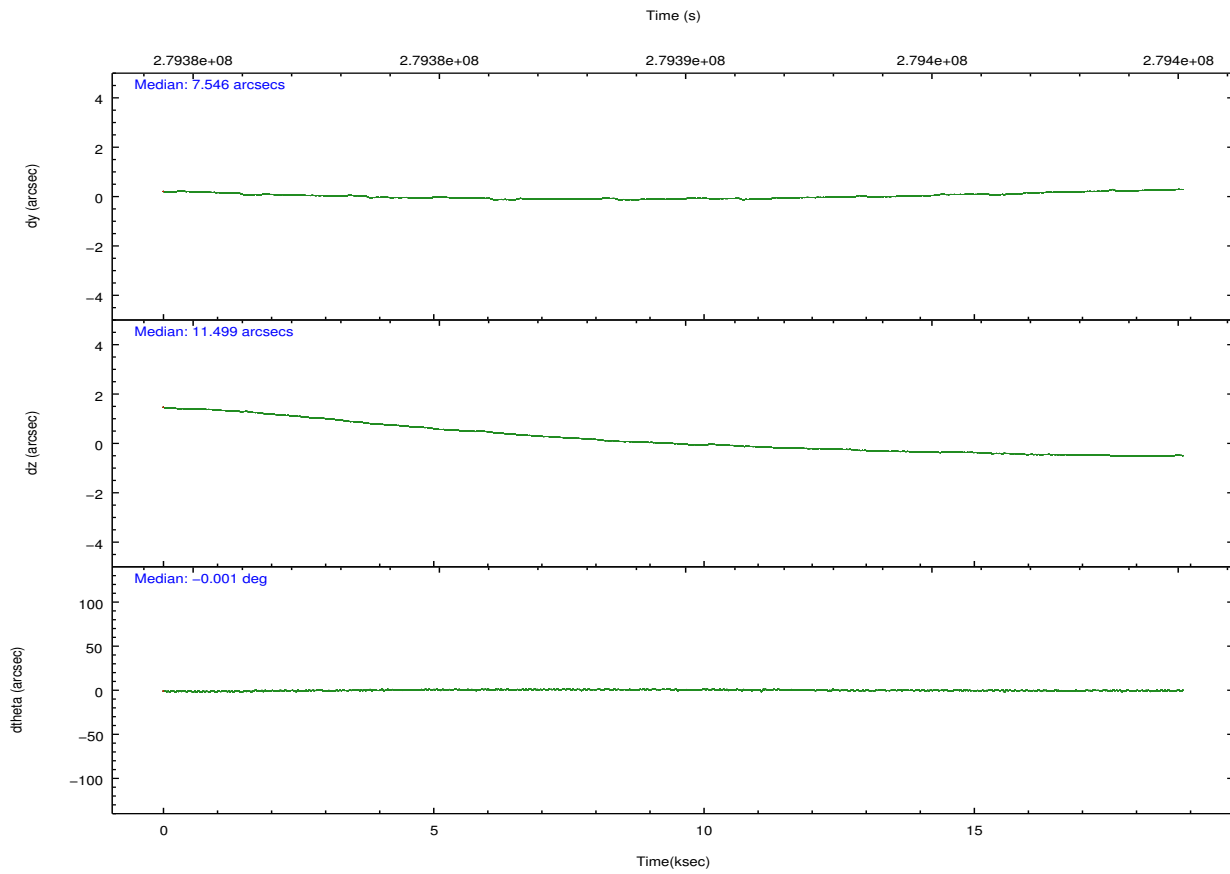
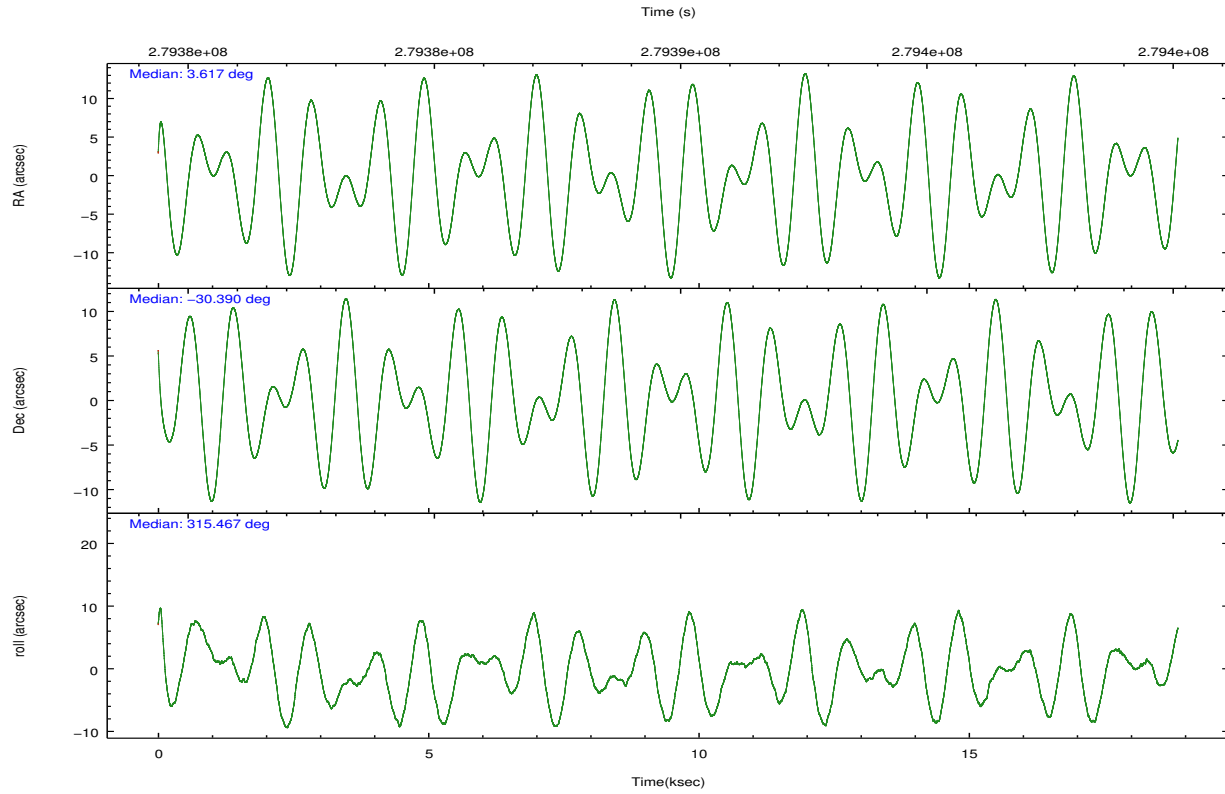
	ccd 0	ccd 1	ccd 2	ccd 3	ccd 6	ccd 7		ccd 0	ccd 1	ccd 2	ccd 3	ccd 6	ccd 7
level 1 events	138854	146407	154407	147979	151463	157590	grade 0 events	5348	14639	5406	7516	5096	6812
rejected events	124384	119466	139989	131138	136790	85564		3%	9%	3%	5%	3%	4%
rejected %	89%	81%	90%	88%	90%	54%	grade 1 events	90	145	98	106	69	210
								0%	0%	0%	0%	0%	0%
							grade 2 events	3432	4814	3414	3296	3325	14715
								2%	3%	2%	2%	2%	9%
							grade 3 events	1593	2128	1538	1664	1638	6687
								1%	1%	0%	1%	1%	4%
							grade 4 events	1530	2011	1567	1619	1531	6774
								1%	1%	1%	1%	1%	4%
							grade 5 events	4755	5289	4237	5652	5855	17016
								3%	3%	2%	3%	3%	10%
							grade 6 events	2679	3531	2584	2853	3176	37518
								1%	2%	1%	1%	2%	23%
							grade 7 events	119427	113850	135563	125273	130773	67858
								86%	77%	87%	84%	86%	43%

2.2 Compared Parameters

Parameter	Planned	Actual	Parameter	Planned	Actual
Instrument	ACIS	ACIS	Obspar format version number	7	7
Detector	ACIS-012367	ACIS-012367	Obspar file type	PREDICTED	ACTUAL
Grating	NONE	NONE	Obspar update status	NONE	UPDATED
Data mode	VFAINT	VFAINT	CCD I0 on	Y	Y
Observation mode	POINTING	POINTING	CCD I1 on	Y	Y
[deg] Pointing RA	3.586264	3.617000722074522	CCD I2 on	Y	Y
[deg] Pointing Dec	-30.383020	-30.38979515479718	CCD I3 on	Y	Y
[deg] Pointing Roll	315.248593	315.4728272810591	CCD S0 on	N	N
[mm] SIM focus pos	-0.782348	-0.7809083437167272	CCD S1 on	N	N
[mm] SIM defocus	0	0.001439871863259334	CCD S2 on	Y	Y
[mm] SIM translation stage pos	-233.592463	-233.5874344608287	CCD S3 on	O1	Y
[mm] SIM translation stage offset	0	-0.005018542100998502	CCD S4 on	N	N
[s] Observation start time (MET)	279380486.184000	279379362.26178	CCD S5 on	N	N
Observation start date	2006-11-08T13:40:21	2006-11-08T13:22:42	Number of optional ACIS chips dropped	0	0
[s] Observation end time (MET)	279399180.184000	279399415.87523	On-chip summing requested	N	N
Observation end date	2006-11-08T18:51:55	2006-11-08T18:56:55	Subarray requested	NONE	NONE
Read mode	TIMED	TIMED	Alternating exposures requested	N	N
			[s] Primary exposure time	0.000000	3.2

2.3 Aspect



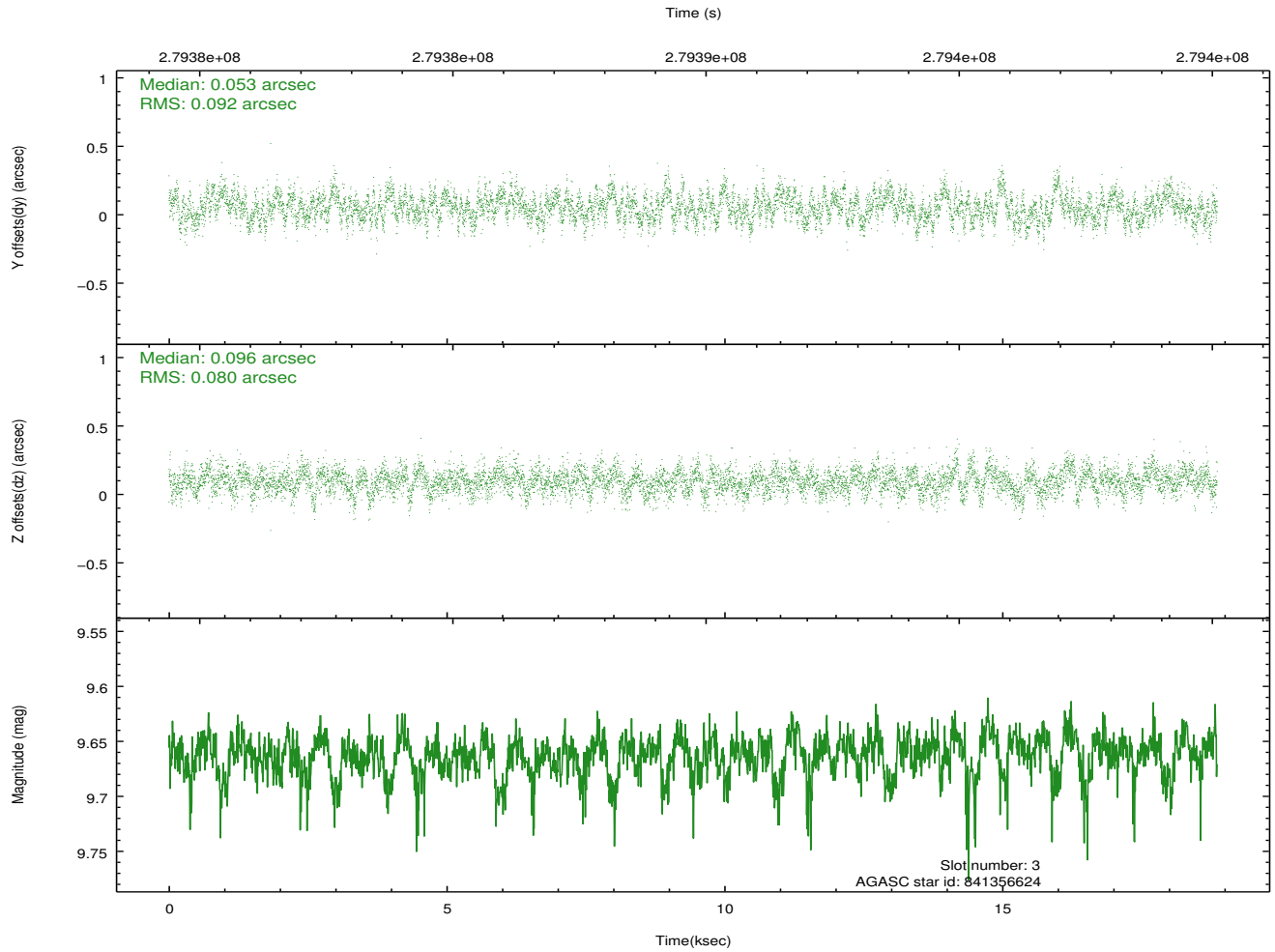
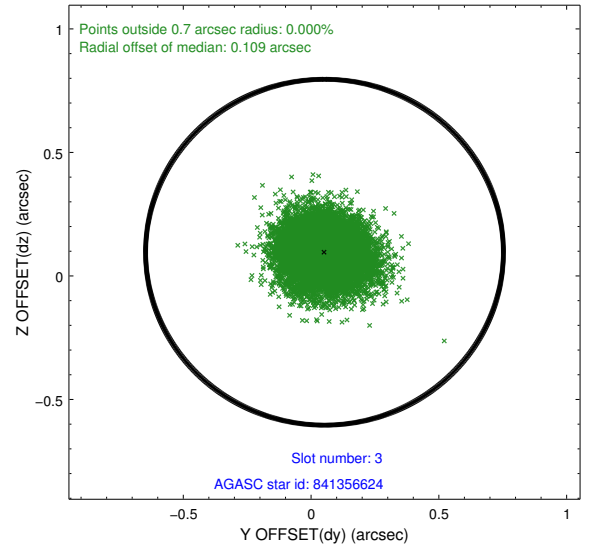
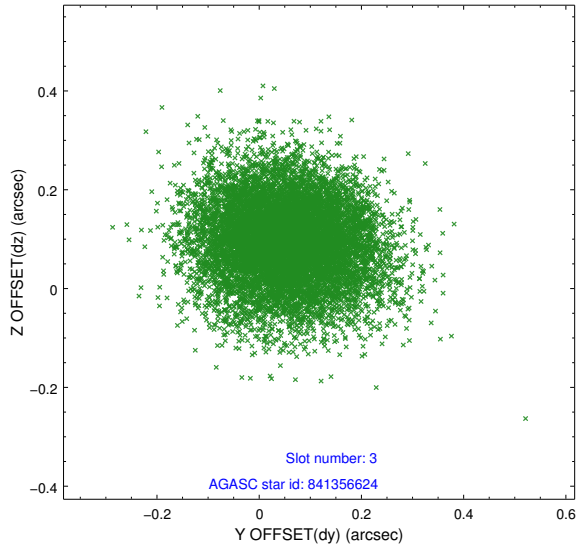


Slot Statistics

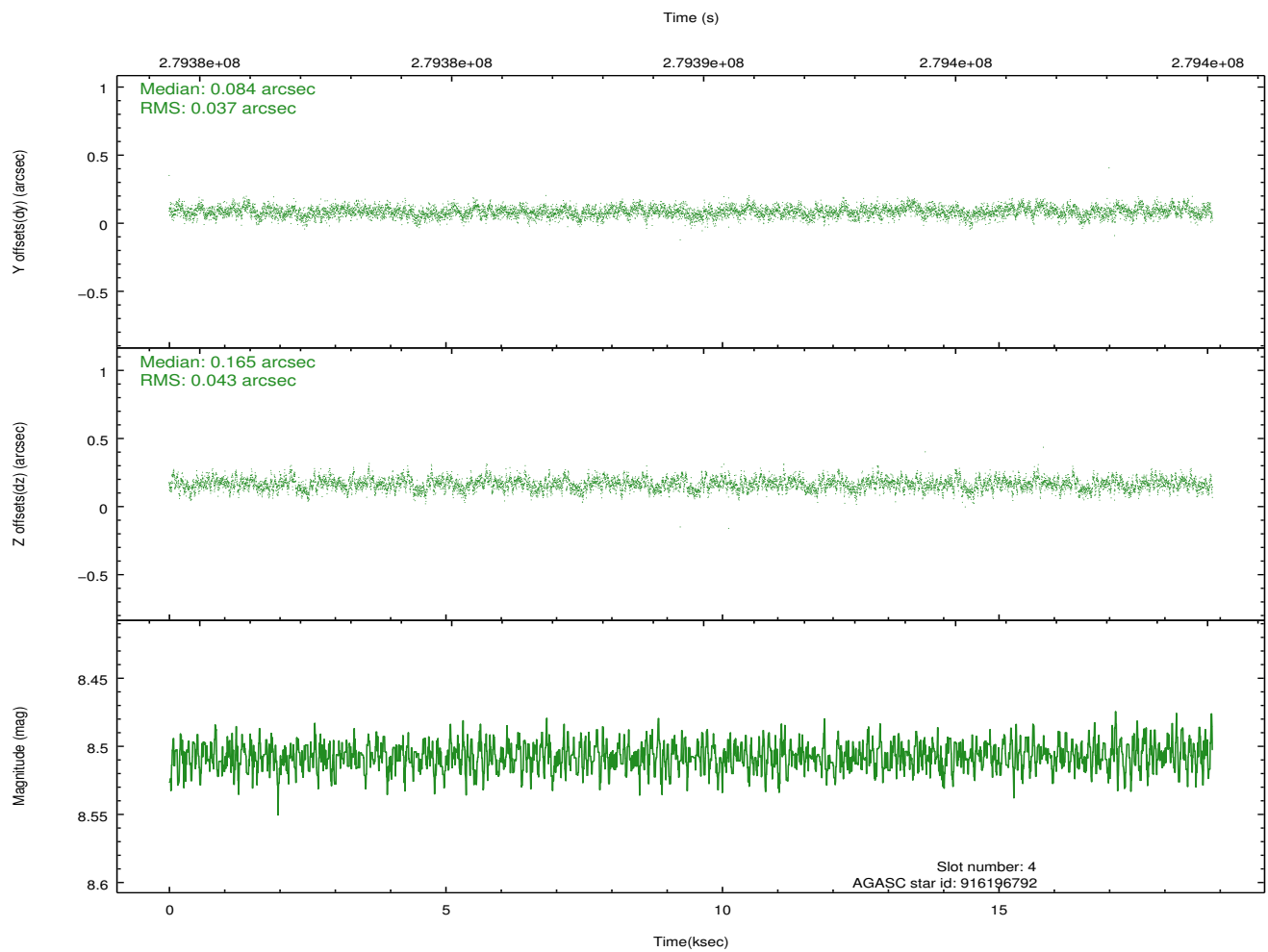
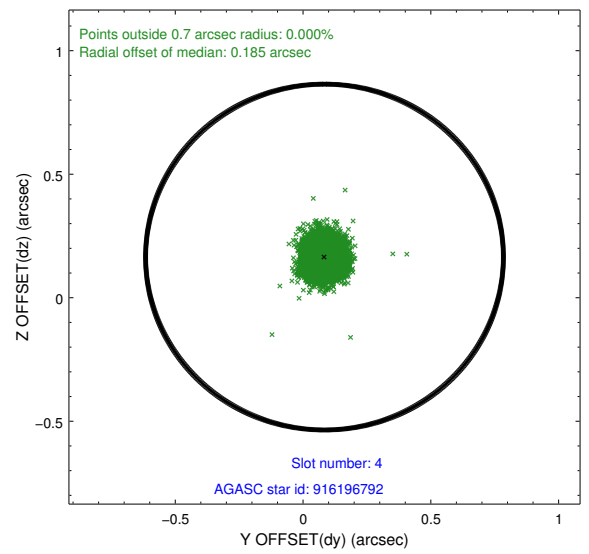
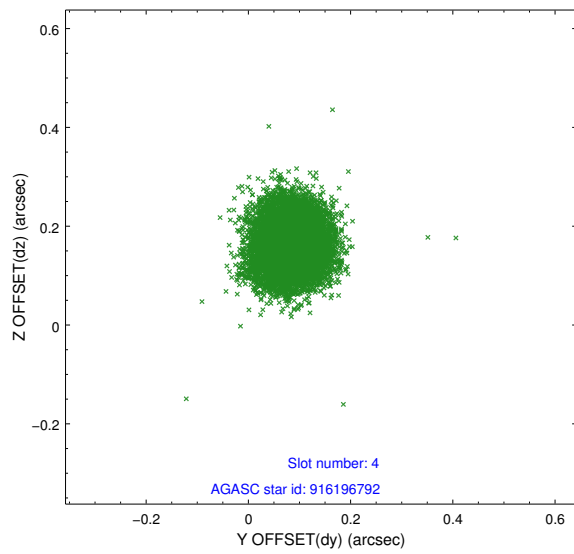
slot	status	id	mag	n_pts	med_dy	med_dz	dr1	dr2	ra	dec	mean_y	mean_z
0	FID	ACIS-I-1	7.24	4601	0.053	-0.053	0.013	0.037	0.000000	0.000000	932.13	-835.26
1	FID	ACIS-I-5	7.23	4601	-0.176	0.060	0.010	0.016	0.000000	0.000000	-1816.07	1062.26
2	FID	ACIS-I-6	7.25	4601	0.032	0.063	0.020	0.036	0.000000	0.000000	397.46	1706.97
3	GUIDE	841356624	9.66	9194	0.053	0.096	0.131	0.208	3.564472	-29.566469	-2117.96	2039.82
4	GUIDE	916196792	8.51	9201	0.084	0.165	0.060	0.098	4.170313	-30.434617	1421.71	1141.96
5	GUIDE	916200592	8.68	9130	0.060	-0.072	0.075	0.116	3.136714	-30.859834	225.62	-2199.89
6	GUIDE	916201520	8.10	9199	-0.082	-0.098	0.057	0.091	3.245363	-30.057887	-1577.01	82.25
7	GUIDE	916068920	9.15	9194	-0.114	-0.088	0.097	0.152	2.606959	-30.479090	-1904.78	-2394.02

2.4 Star Slots

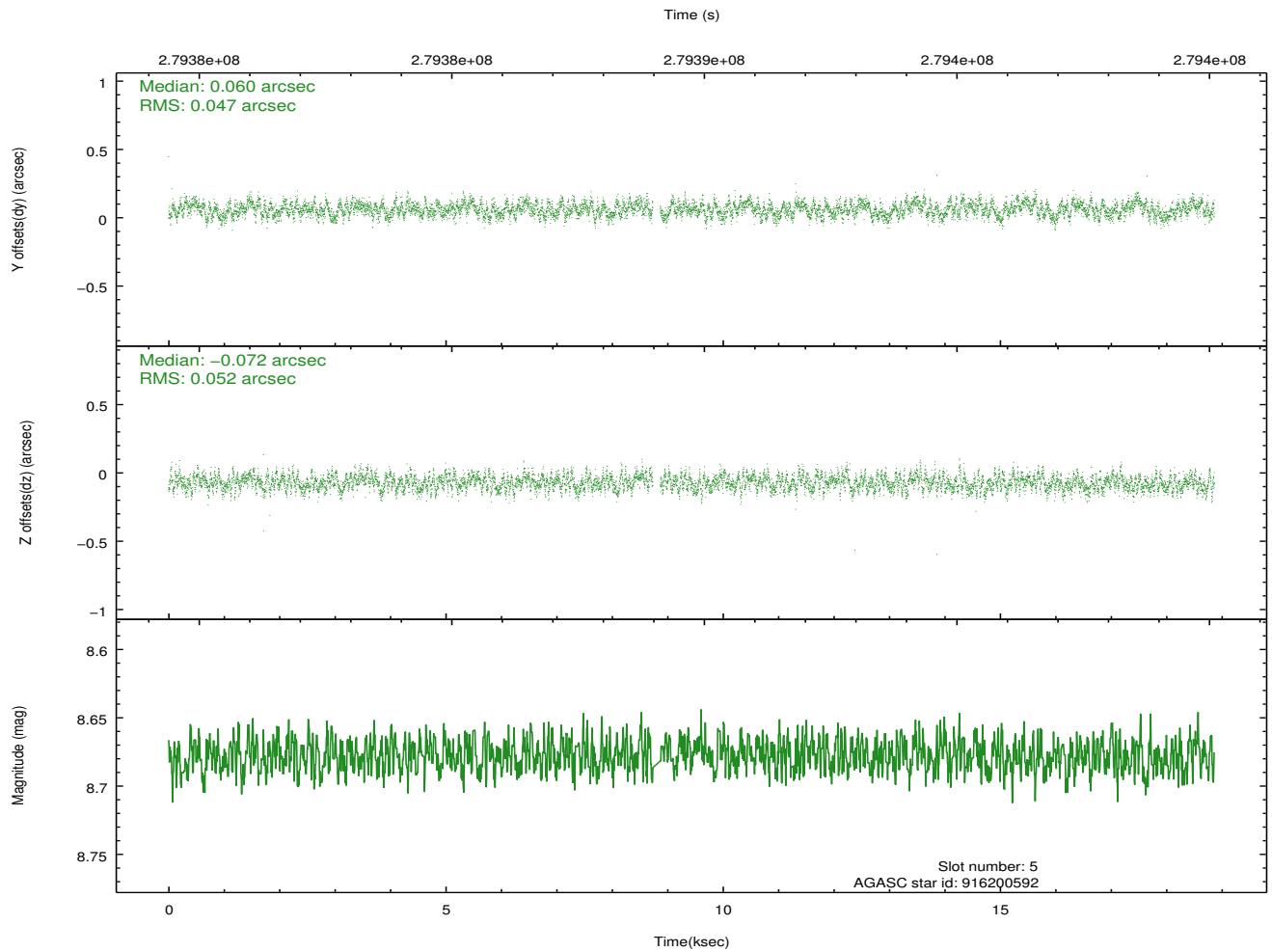
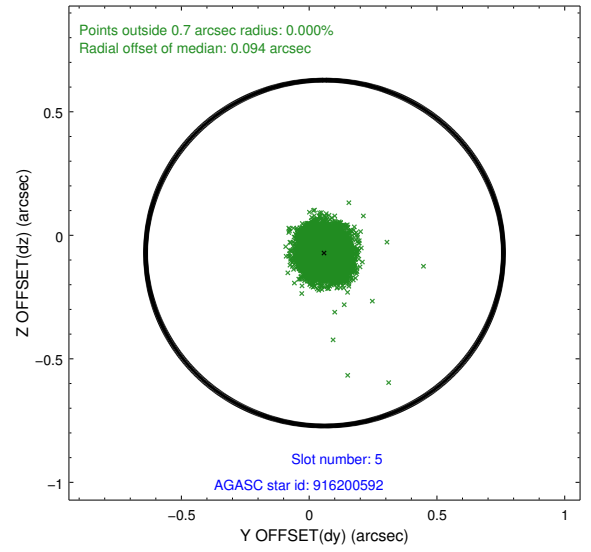
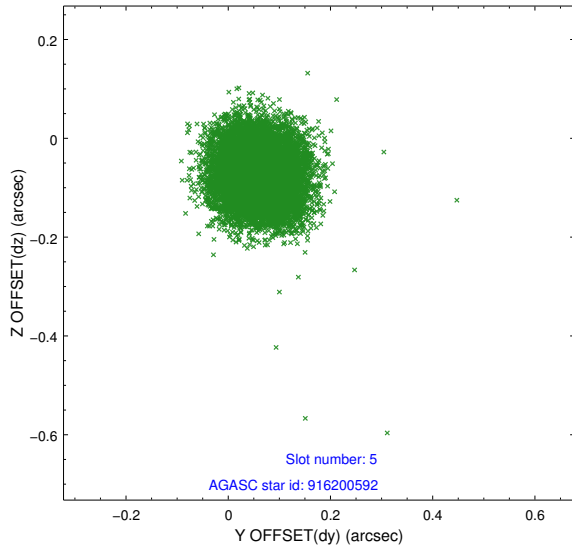
2.4.1 Slot 3



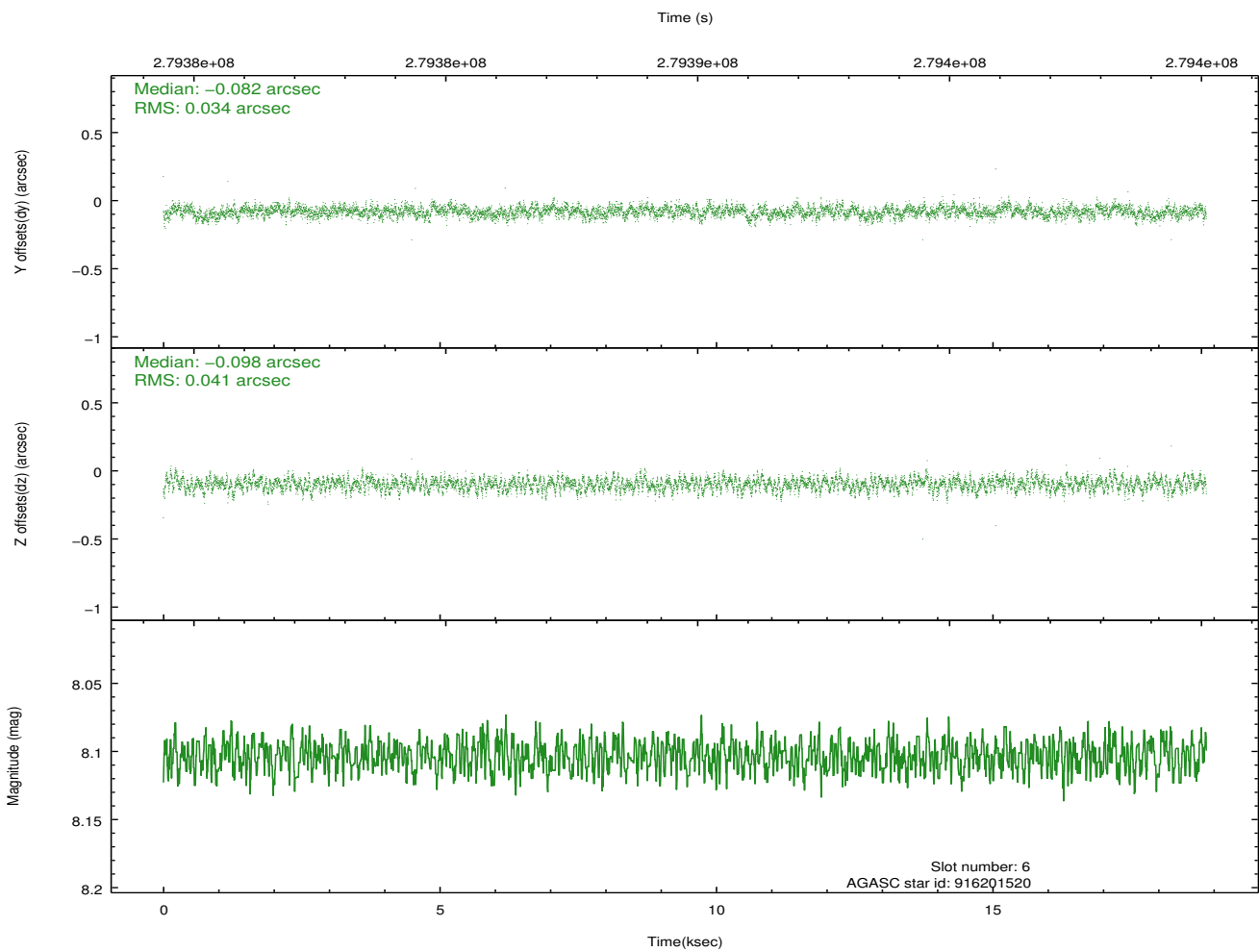
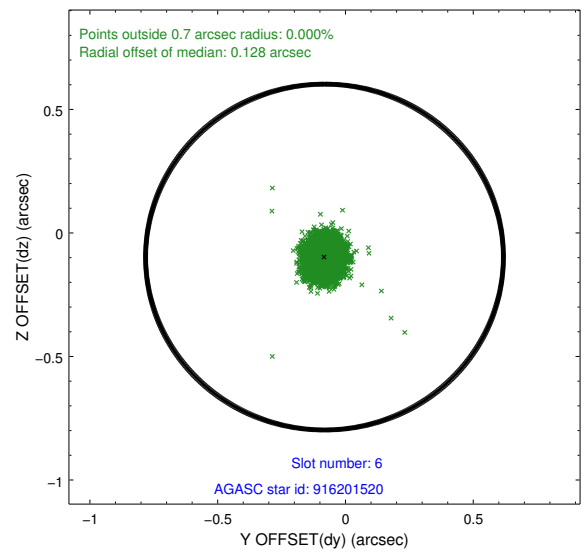
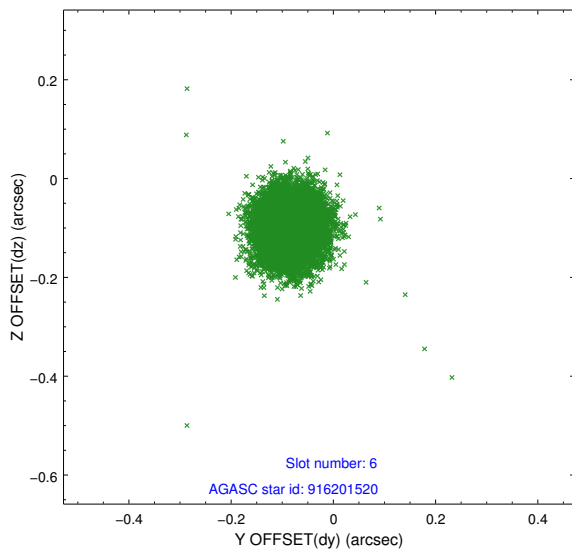
2.4.2 Slot 4



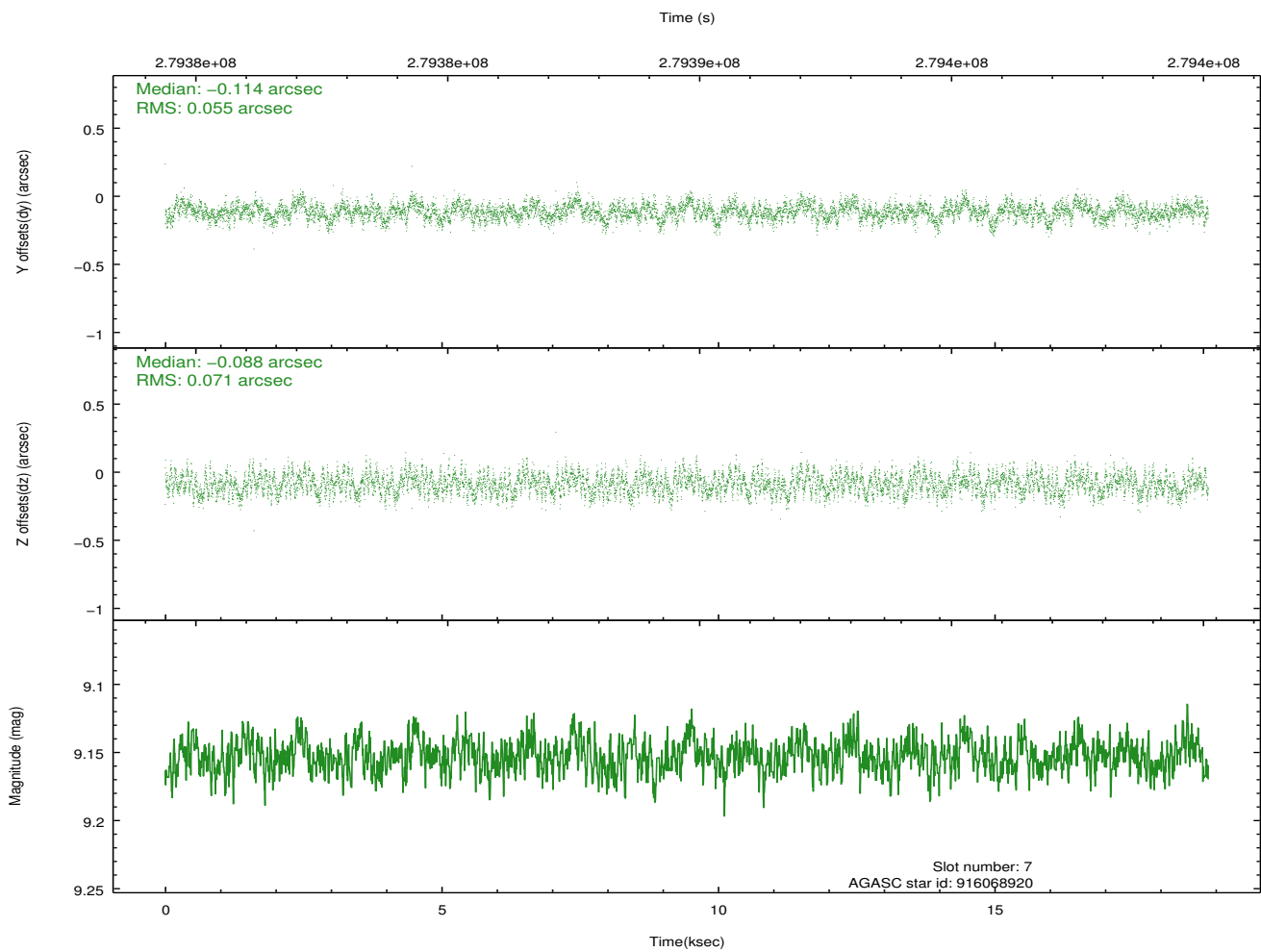
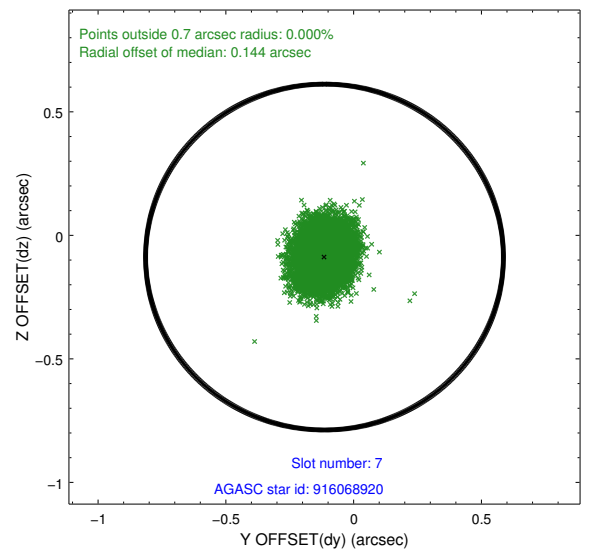
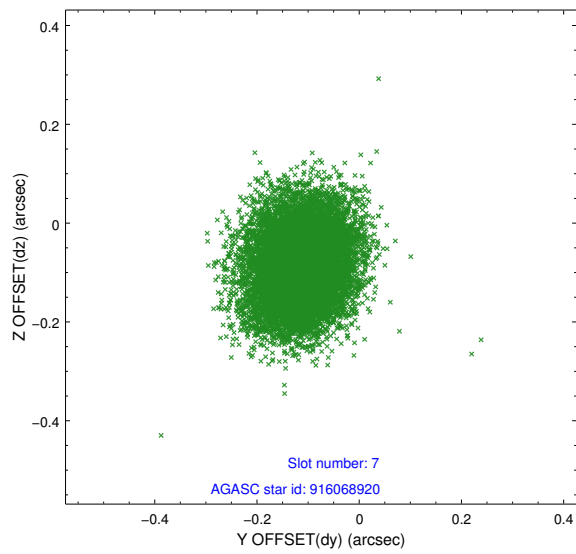
2.4.3 Slot 5



2.4.4 Slot 6

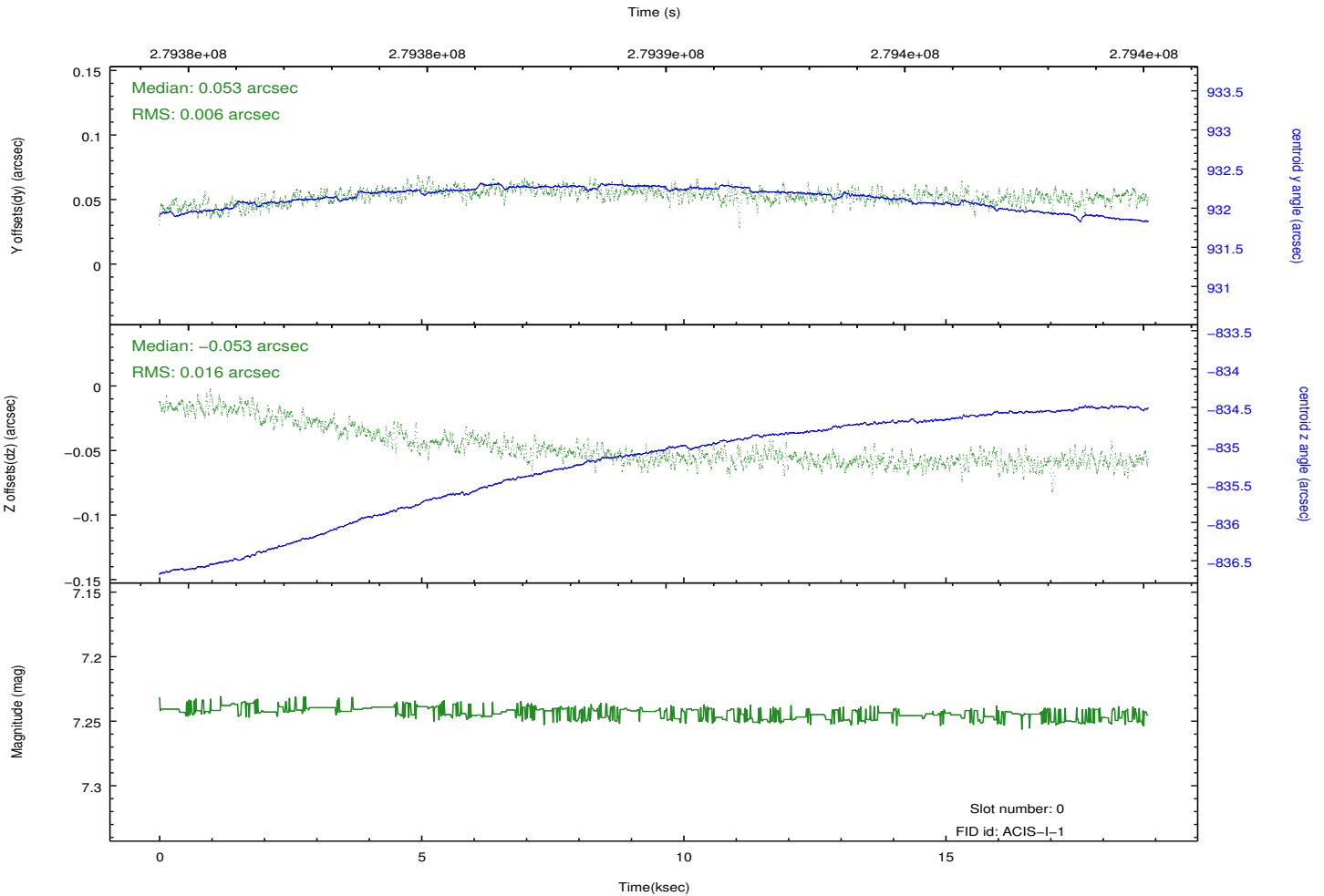
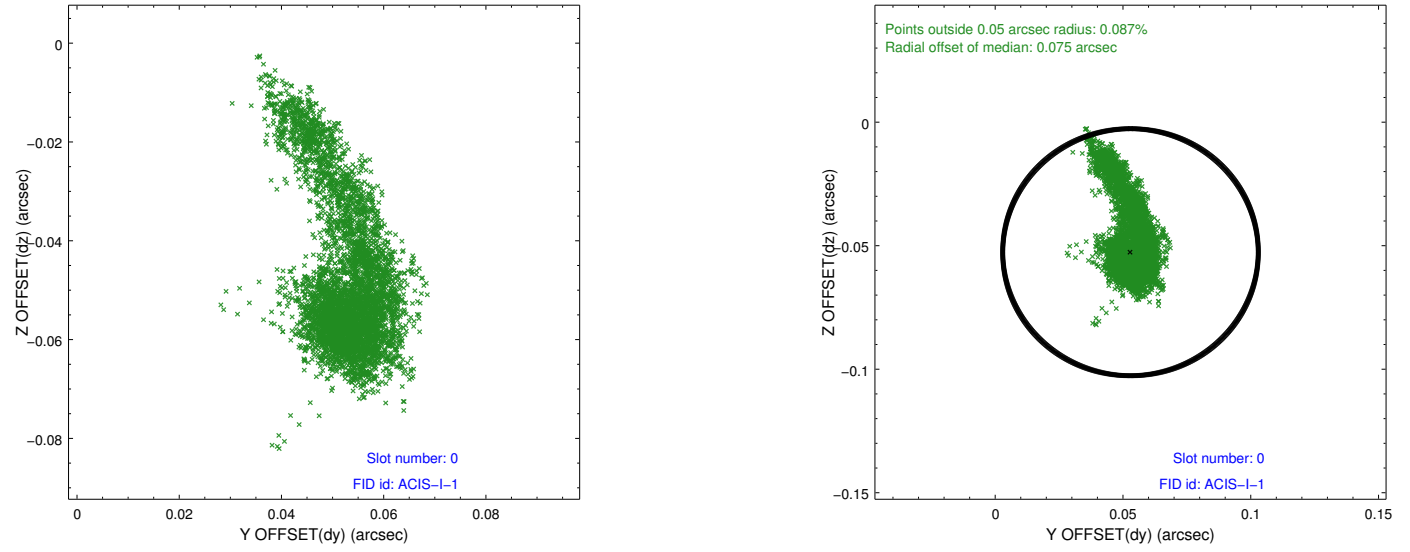


2.4.5 Slot 7

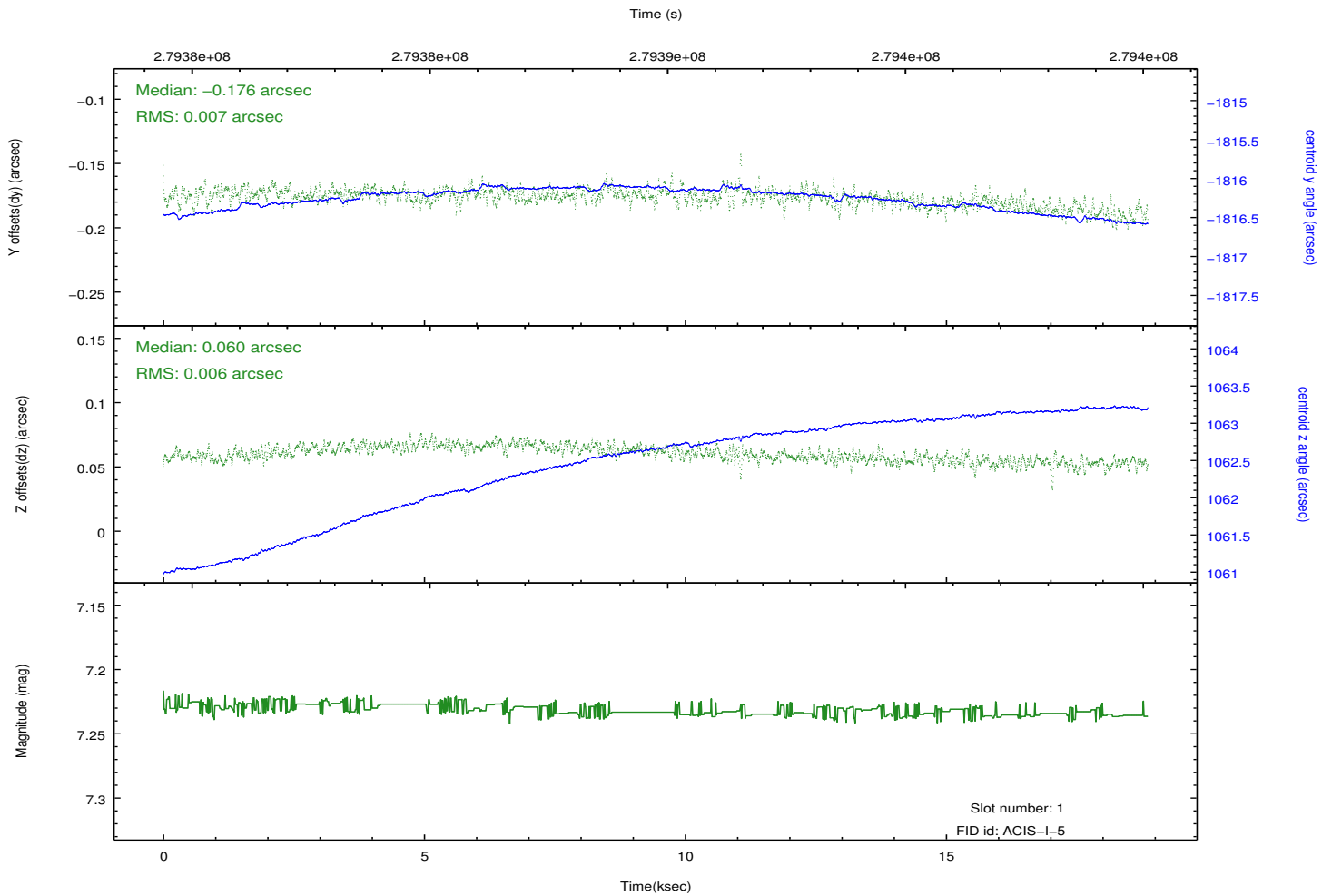
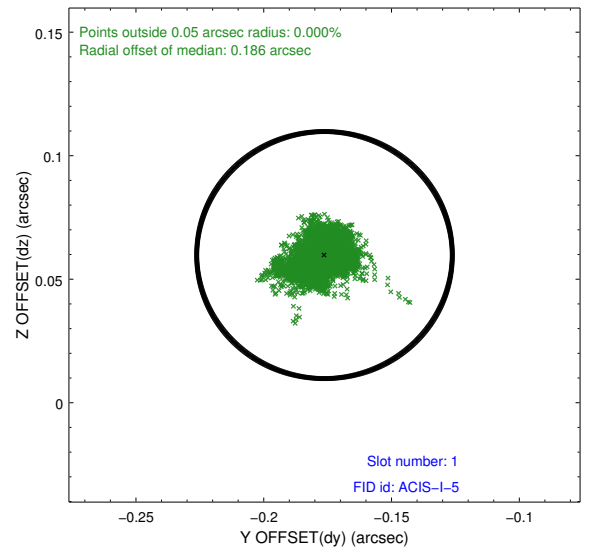
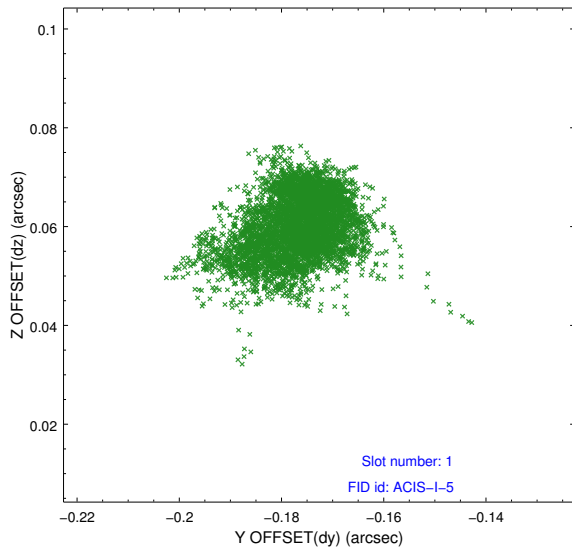


2.5 FID Slots

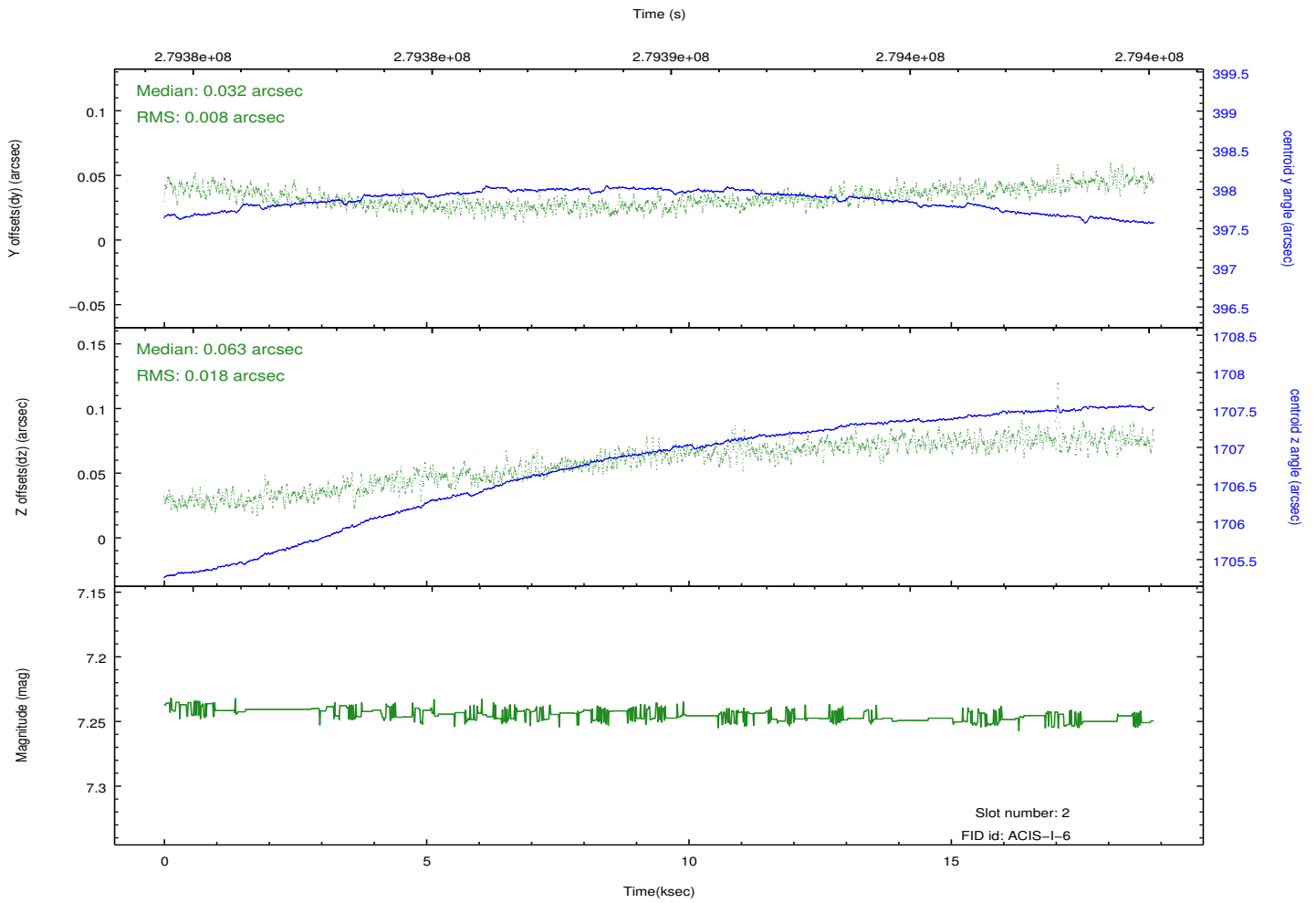
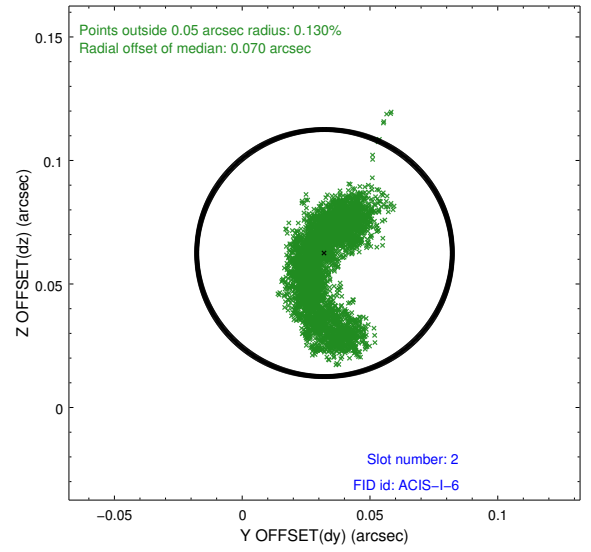
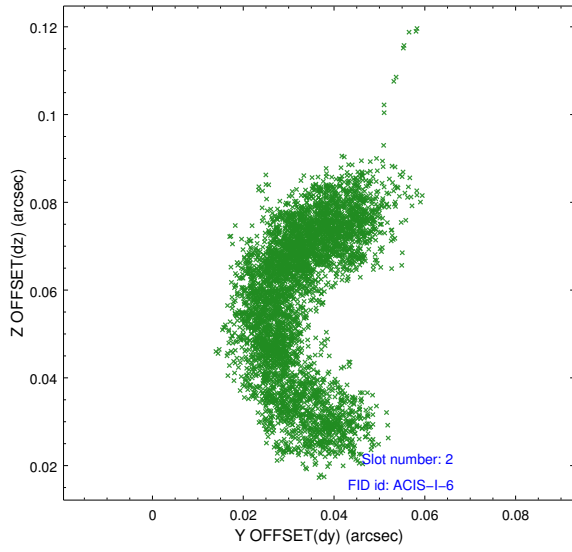
2.5.1 Slot 0



2.5.2 Slot 1



2.5.3 Slot 2



A Summary

A.1 Status

V&V Scientist	Beth Sundheim
V&V Date (YYYY-MM-DD)	2012.04.13
V&V Edition	1
V&V Disposition and Status	OK
V&V Charge Time	18.8575999

A.2 Comments