

V&V Reference Report

L2 ASCDS Version : 8.4.4

Observation 7925 - L2 Version 2
Chandra X-Ray Center

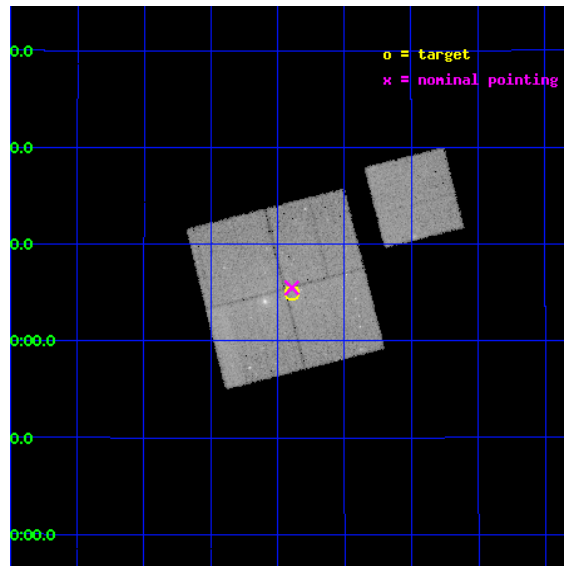
L2 Processing Date : May 1 2012

Contents

1	Front	2
2	OBI	3
2.1	OBI	3
2.1.1	Images	3
2.1.2	Bias	3
2.1.3	Parameters	4
2.1.4	Events	4
2.2	Compared Parameters	5
2.3	Aspect	6
2.4	Star Slots	9
2.4.1	Slot 3	9
2.4.2	Slot 4	10
2.4.3	Slot 5	11
2.4.4	Slot 6	12
2.4.5	Slot 7	13
2.5	FID Slots	14
2.5.1	Slot 0	14
2.5.2	Slot 1	15
2.5.3	Slot 2	16
A	Summary	17
A.1	Status	17
A.2	Comments	17

1 Front

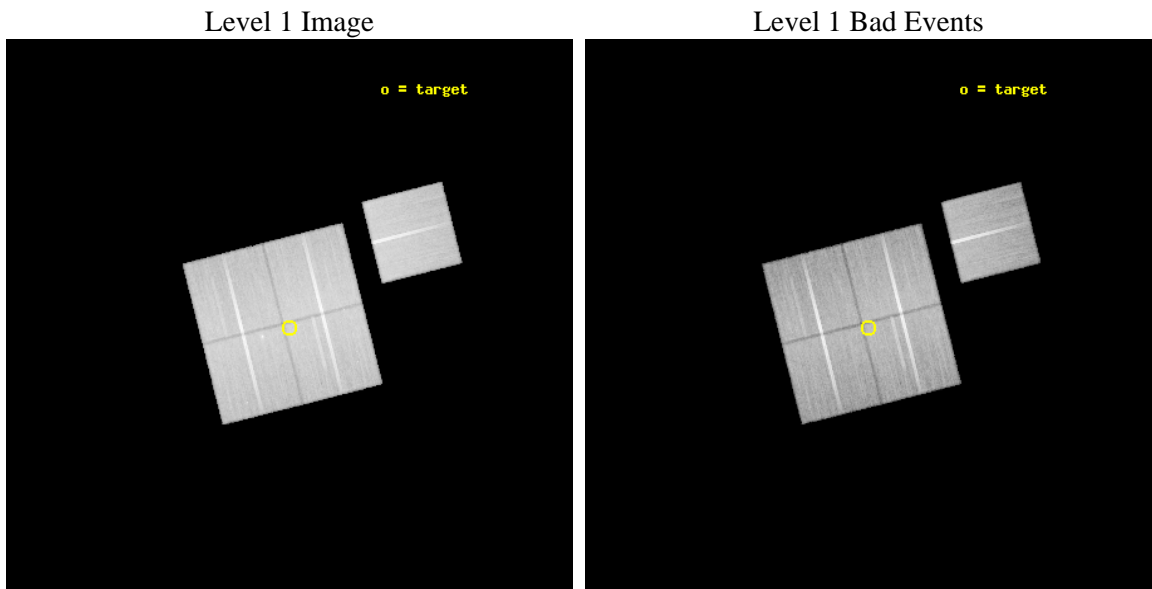
seq_num	800643	Sequence number
obs_id	7925	Observation id
title	A Complete Baryon Census in a Nearby Galaxy Group	Proposal title
observer	Dr. John Mulchaey	Principal investigator
object	NGC2563-P1	Source name
dtycycle	0	
cycle	P	events from which exps? Prim/Second/Both
ra_targ	125.09875	Observer's specified target RA [deg]
dec_targ	21.083472	Observer's specified target Dec [deg]
ra_nom	125.09828022688	Nominal RA [deg]
dec_nom	21.091535058955	Nominal Dec [deg]
roll_nom	75.801102619841	Nominal Roll [deg]
revision	2	Processing version of data
ontime	48747.418424368	Sum of GTIs [s]
liveltime	48110.497515326	Livetime [s]
ontime0	48734.854632914	Sum of GTIs [s]
ontime1	48747.41845423	Sum of GTIs [s]
ontime2	48747.418424428	Sum of GTIs [s]
ontime3	48747.418424368	Sum of GTIs [s]
ontime6	48750.559414685	Sum of GTIs [s]
l2events	180741	Number of level 2 events



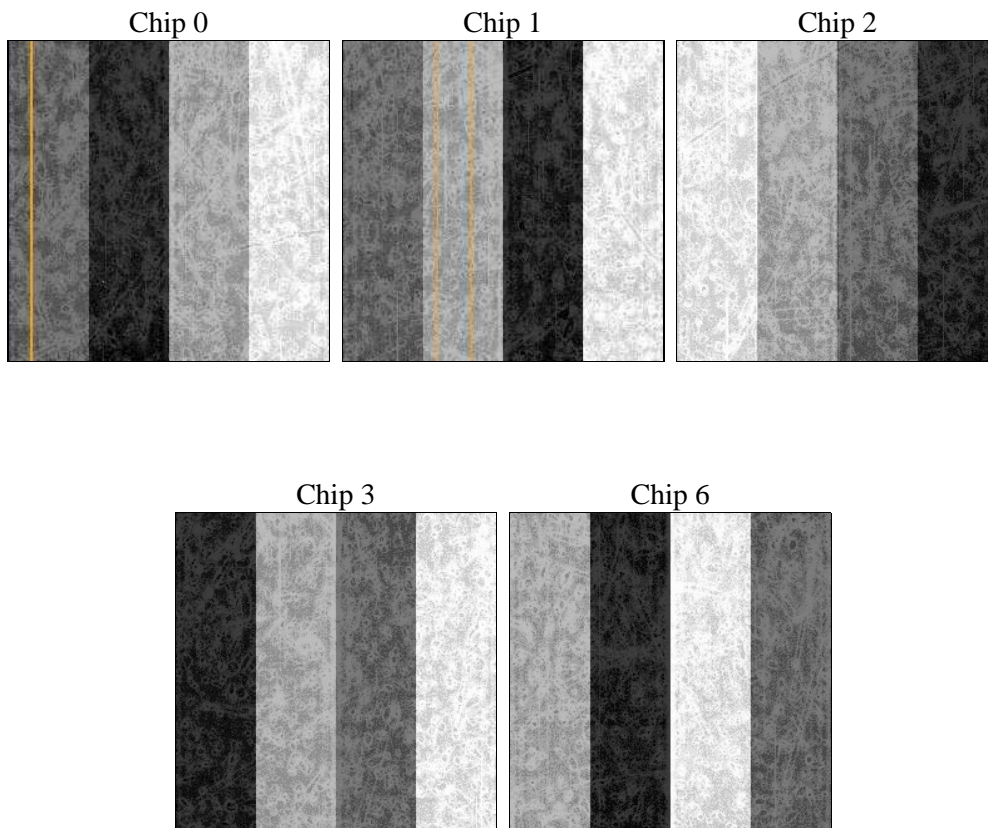
2 OBI

2.1 OBI

2.1.1 Images



2.1.2 Bias



2.1.3 Parameters

obi_num	1	Obi number	sched_exp_time	48594.281000	[s] Scheduled observation exposure time
ascdsver	8.4.4	Processing system revision	ontime	48747.418424368	Sum of GTIs [s]
caldbver	4.4.9	 	ontime0	48734.854632914	Sum of GTIs [s]
date	2012-05-01T07:03:15	Date and time of file creation	ontime1	48747.41845423	Sum of GTIs [s]
revision	2	Processing version of data	ontime2	48747.418424428	Sum of GTIs [s]
			ontime3	48747.418424368	Sum of GTIs [s]
			ontime6	48750.559414685	Sum of GTIs [s]
			l1events	2036063	Number of level 1 events

2.1.4 Events

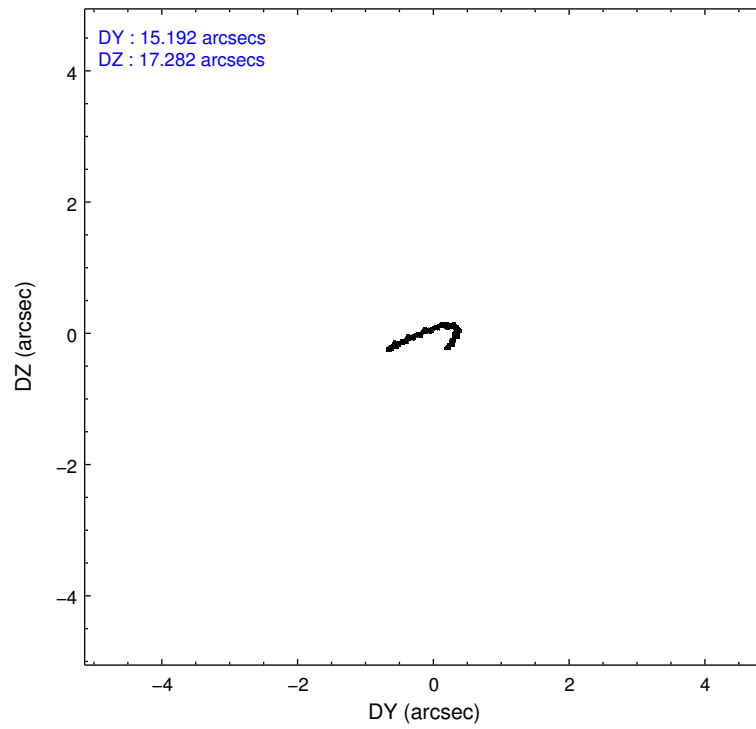
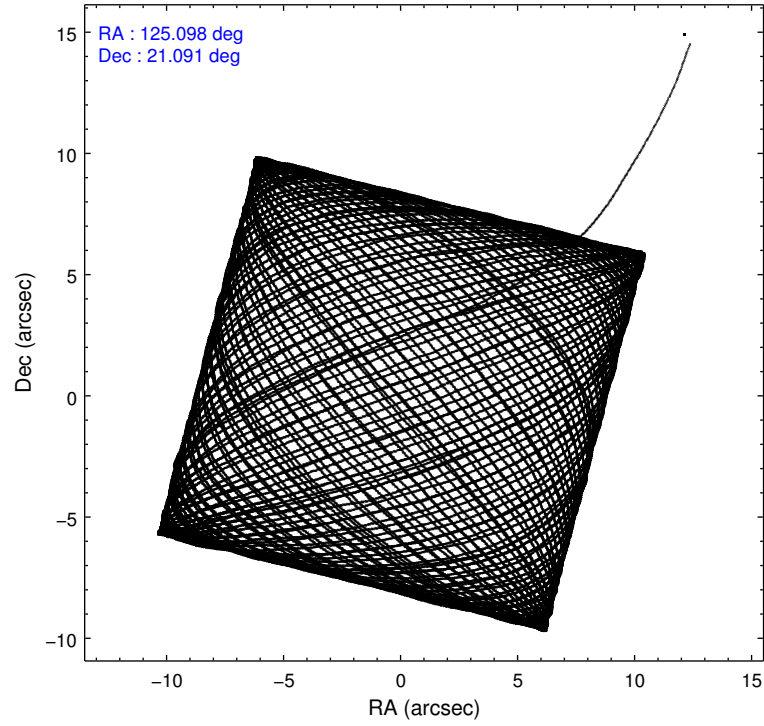
	ccd 0	ccd 1	ccd 2	ccd 3	ccd 6
level 1 events	389128	389913	432282	412396	412344
rejected events	346142	339200	391251	371791	371593
rejected %	88%	86%	90%	90%	90%

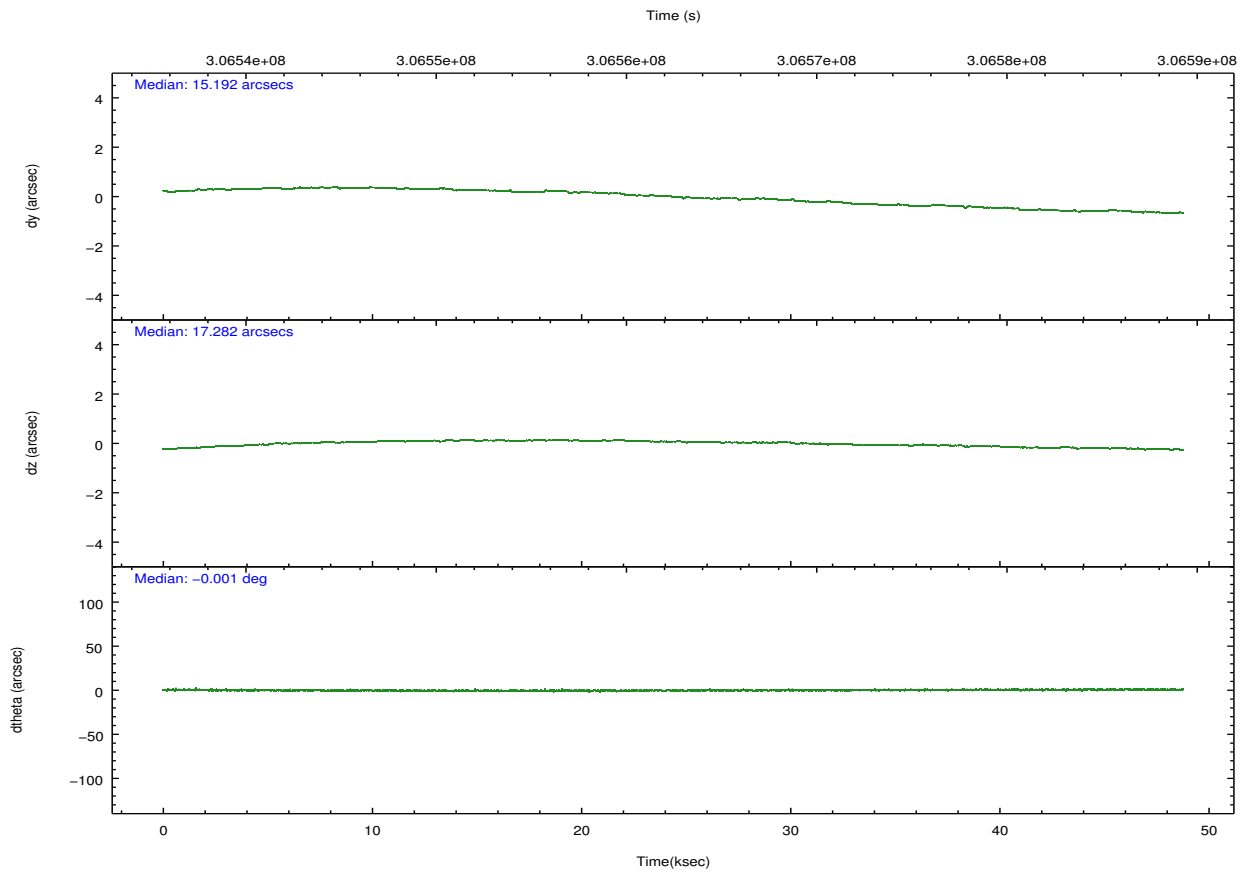
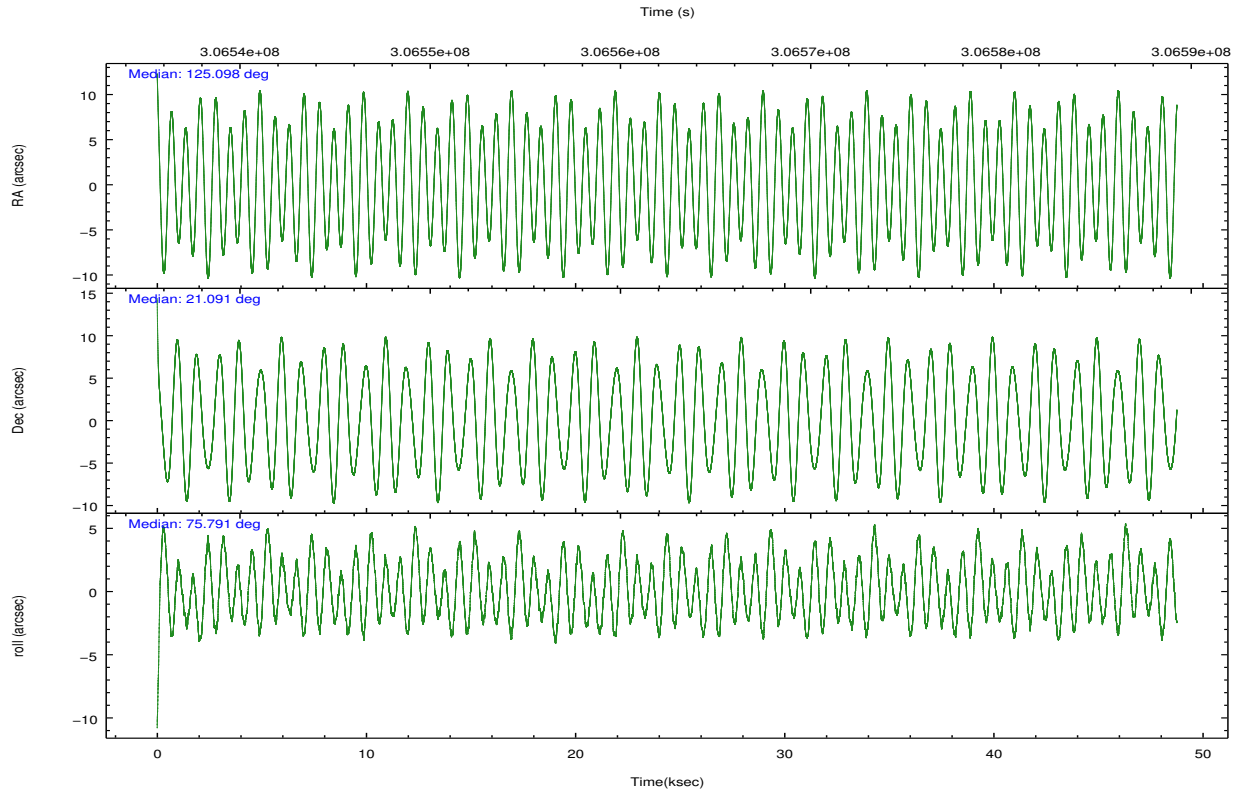
	ccd 0	ccd 1	ccd 2	ccd 3	ccd 6
grade 0 events	16723	21470	16004	15984	14587
	4%	5%	3%	3%	3%
grade 1 events	228	241	254	287	209
	0%	0%	0%	0%	0%
grade 2 events	9884	10617	9828	8758	8979
	2%	2%	2%	2%	2%
grade 3 events	4712	5042	4290	4403	4531
	1%	1%	0%	1%	1%
grade 4 events	4279	4956	4277	4364	4670
	1%	1%	0%	1%	1%
grade 5 events	13932	15514	12978	16279	15822
	3%	3%	3%	3%	3%
grade 6 events	7987	9304	7220	7655	8577
	2%	2%	1%	1%	2%
grade 7 events	331383	322769	377431	354666	354969
	85%	82%	87%	86%	86%

2.2 Compared Parameters

Parameter	Planned	Actual	Parameter	Planned	Actual
Instrument	ACIS	ACIS	Obspar format version number	7	7
Detector	ACIS-01236	ACIS-01236	Obspar file type	PREDICTED	ACTUAL
Grating	NONE	NONE	Obspar update status	NONE	UPDATED
Data mode	VFAINT	VFAINT	CCD I0 on	Y	Y
Observation mode	POINTING	POINTING	CCD I1 on	Y	Y
[deg] Pointing RA	125.106416	125.0982802268764	CCD I2 on	Y	Y
[deg] Pointing Dec	21.065115	21.09153505895456	CCD I3 on	Y	Y
[deg] Pointing Roll	75.589494	75.80110261984075	CCD S0 on	N	N
[mm] SIM focus pos	-0.782348	-0.7809083437167272	CCD S1 on	N	N
[mm] SIM defocus	0	0.001439871863259334	CCD S2 on	O1	Y
[mm] SIM translation stage pos	-233.592463	-233.5874344608287	CCD S3 on	N	N
[mm] SIM translation stage offset	0	-0.005018542100998502	CCD S4 on	N	N
[s] Observation start time (MET)	306538236.184000	306536900.50611	CCD S5 on	N	N
Observation start date	2007-09-18T21:29:31	2007-09-18T21:08:20	Number of optional ACIS chips dropped	0	0
[s] Observation end time (MET)	306586831.184000	306587065.03353	On-chip summing requested	N	N
Observation end date	2007-09-19T10:59:26	2007-09-19T11:04:25	Subarray requested	NONE	NONE
Read mode	TIMED	TIMED	Alternating exposures requested	N	N
			[s] Primary exposure time	0.000000	3.1

2.3 Aspect



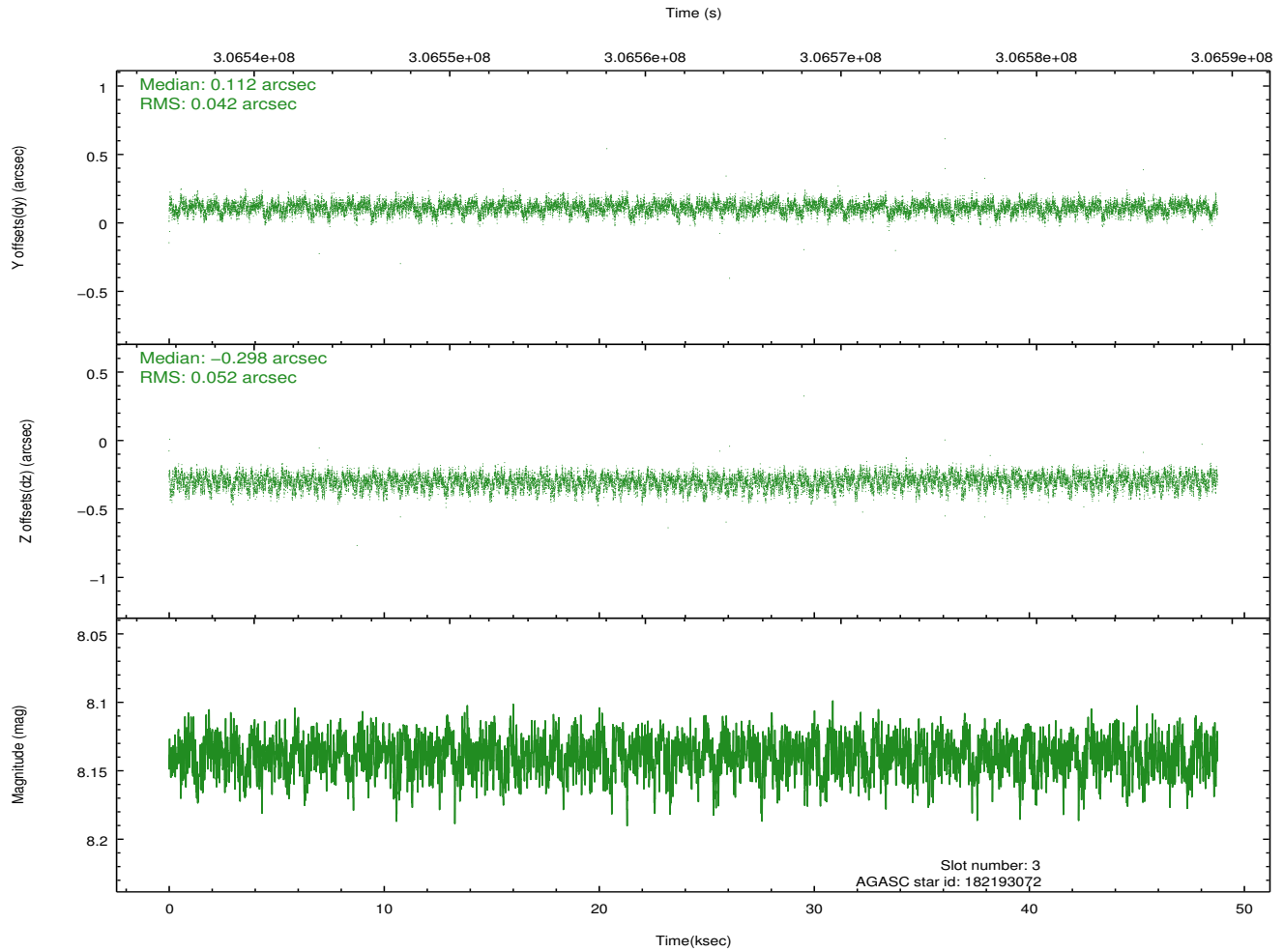
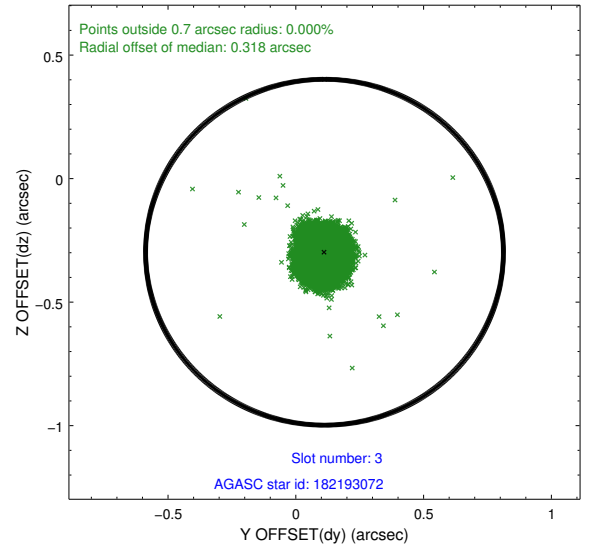
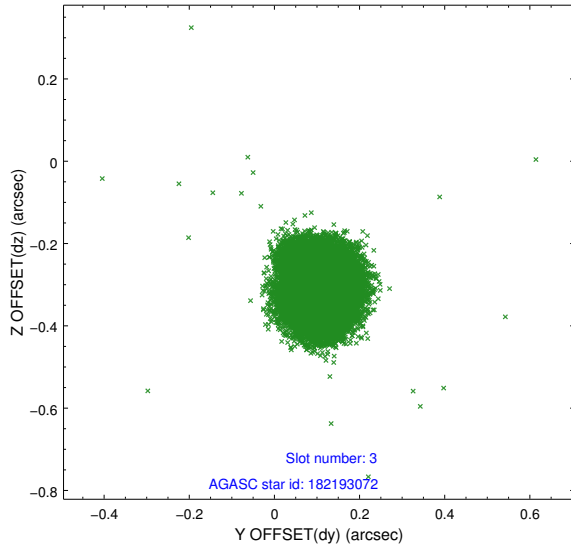


Slot Statistics

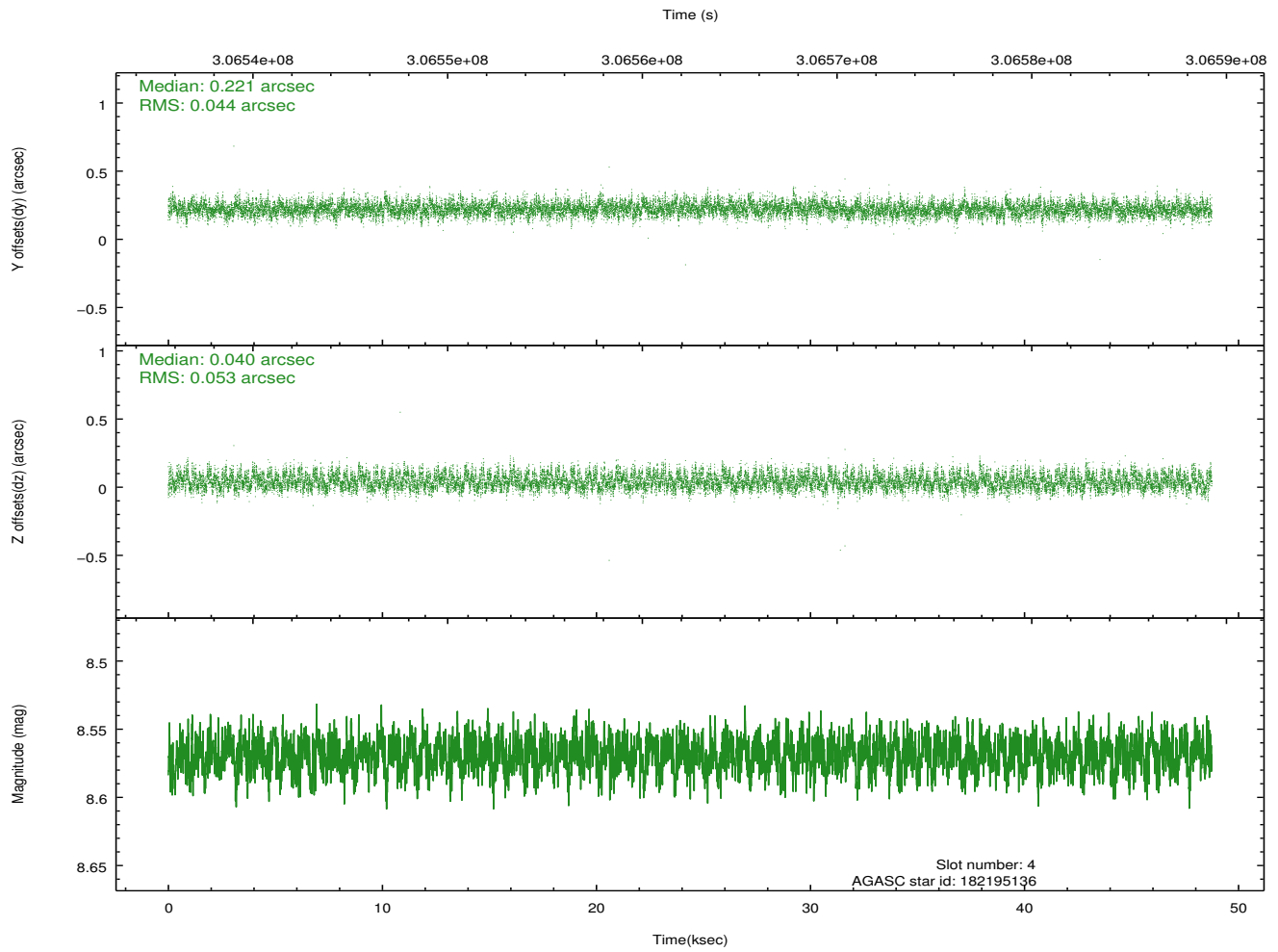
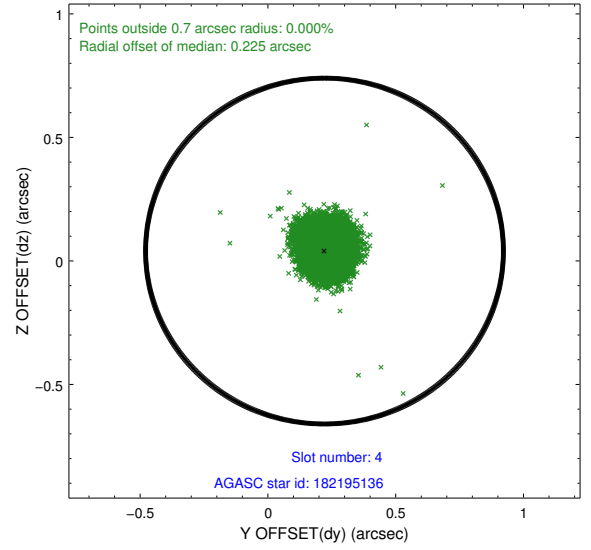
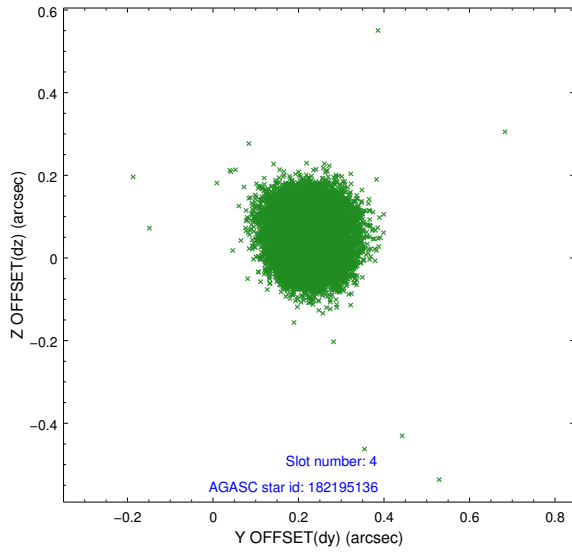
slot	status	id	mag	n_pts	med_dy	med_dz	dr1	dr2	ra	dec	mean_y	mean_z
0	FID	ACIS-I-1	7.23	11891	0.053	-0.002	0.017	0.030	0.000000	0.000000	924.35	-840.94
1	FID	ACIS-I-5	7.22	11892	-0.206	0.064	0.011	0.019	0.000000	0.000000	-1823.99	1056.68
2	FID	ACIS-I-6	7.24	11893	0.061	0.011	0.012	0.019	0.000000	0.000000	389.97	1701.07
3	GUIDE	182193072	8.14	23777	0.112	-0.298	0.070	0.114	124.468170	21.177590	-136.82	2176.55
4	GUIDE	182195136	8.57	23770	0.221	0.040	0.073	0.118	124.931899	20.918080	-657.95	436.70
5	GUIDE	182196376	8.99	23731	-0.168	0.153	0.077	0.129	125.557315	21.603160	2253.92	-978.65
6	GUIDE	182202928	9.07	23748	-0.133	0.175	0.091	0.146	125.551699	21.434953	1663.32	-1113.06
7	GUIDE	182202936	7.80	23781	-0.032	-0.068	0.053	0.084	124.849962	21.257255	456.53	1005.37

2.4 Star Slots

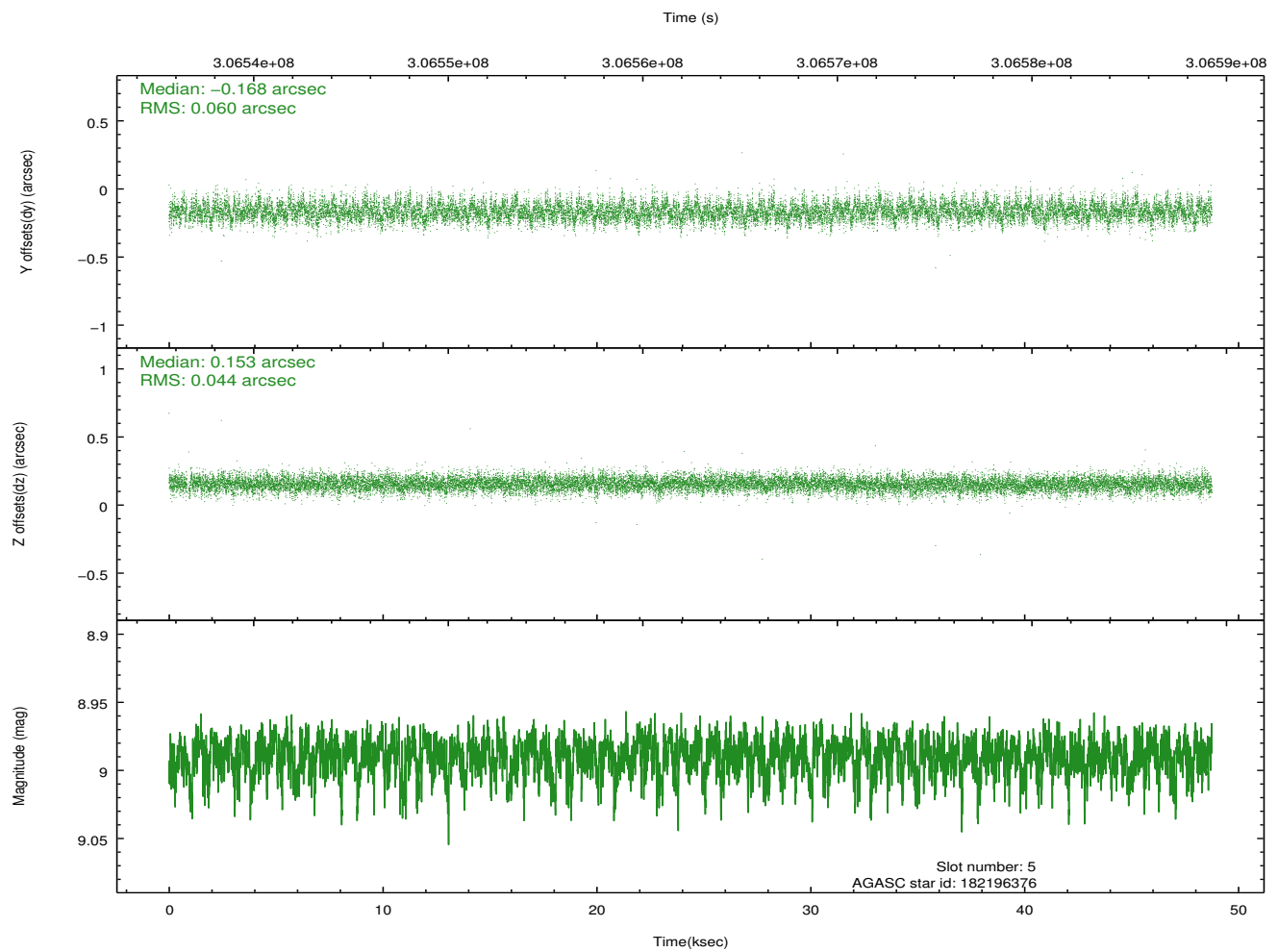
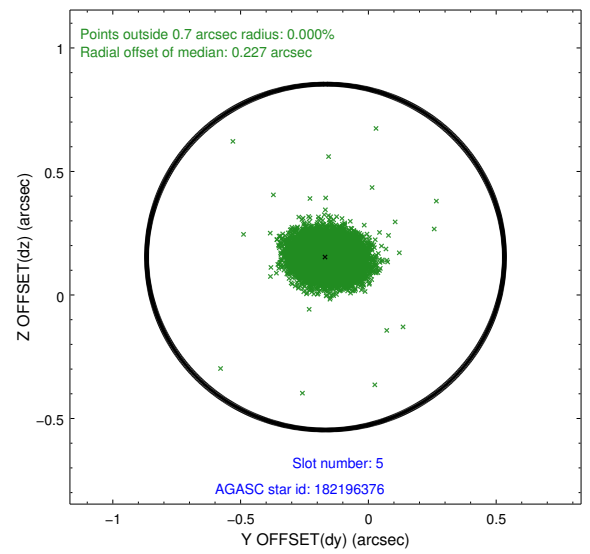
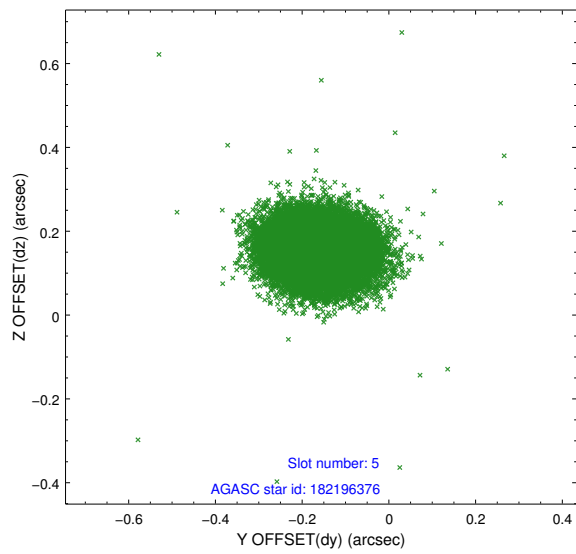
2.4.1 Slot 3



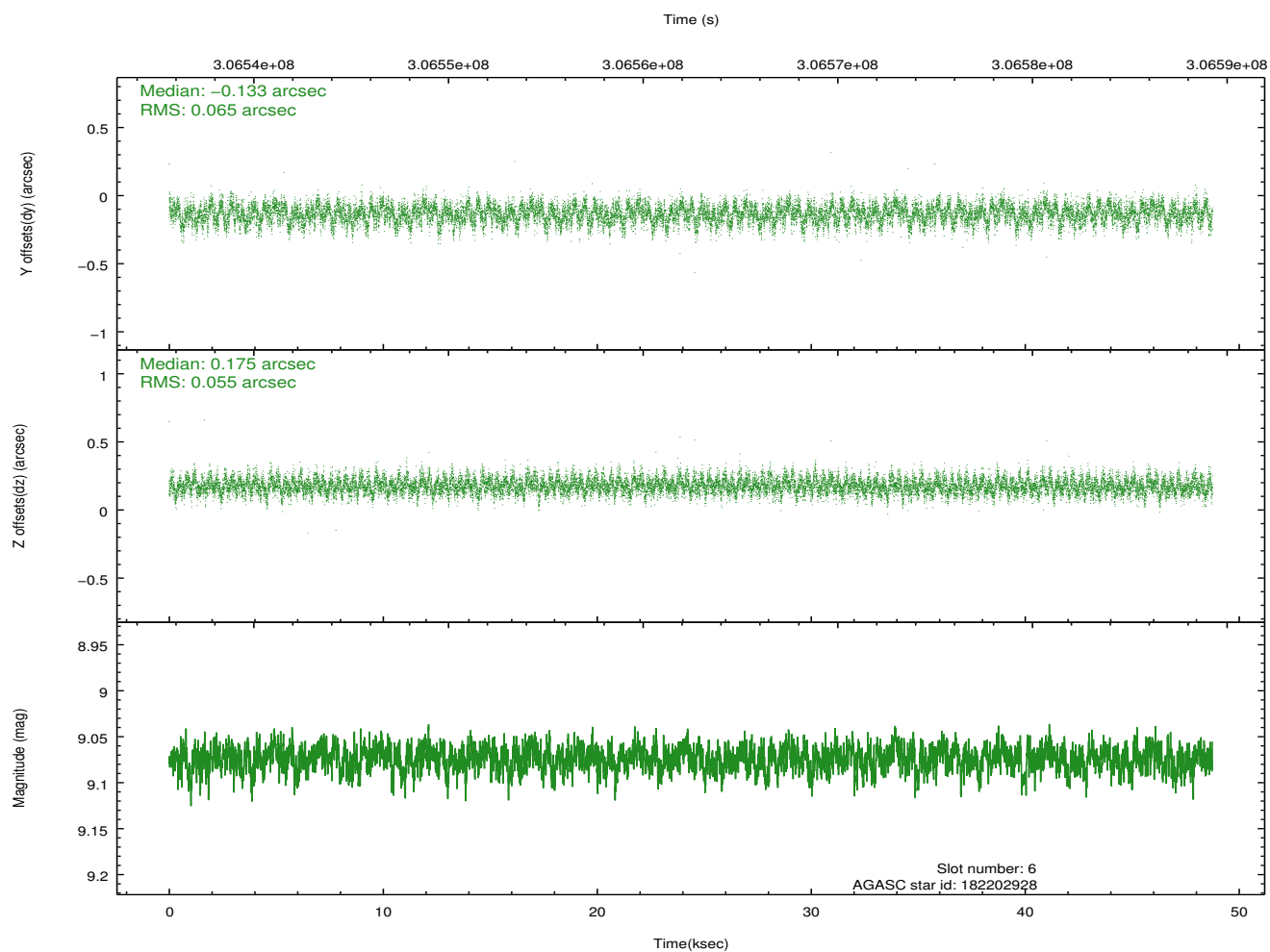
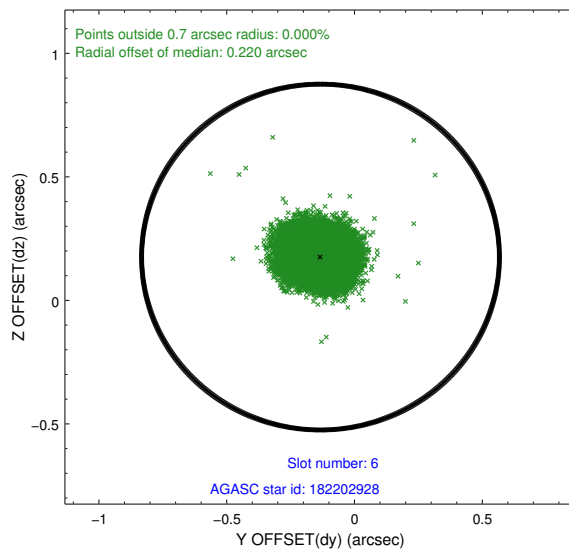
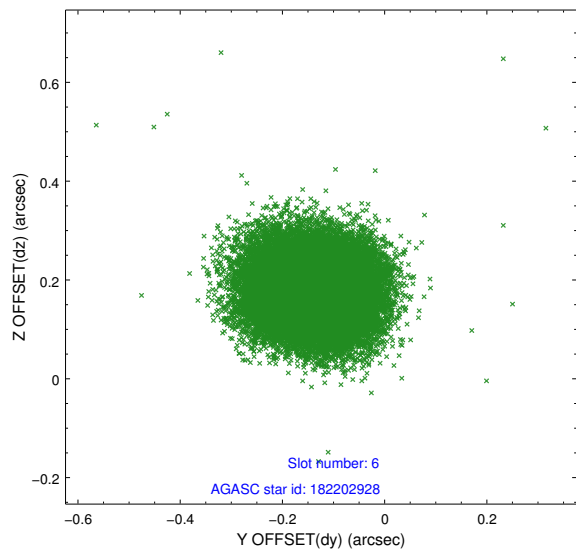
2.4.2 Slot 4



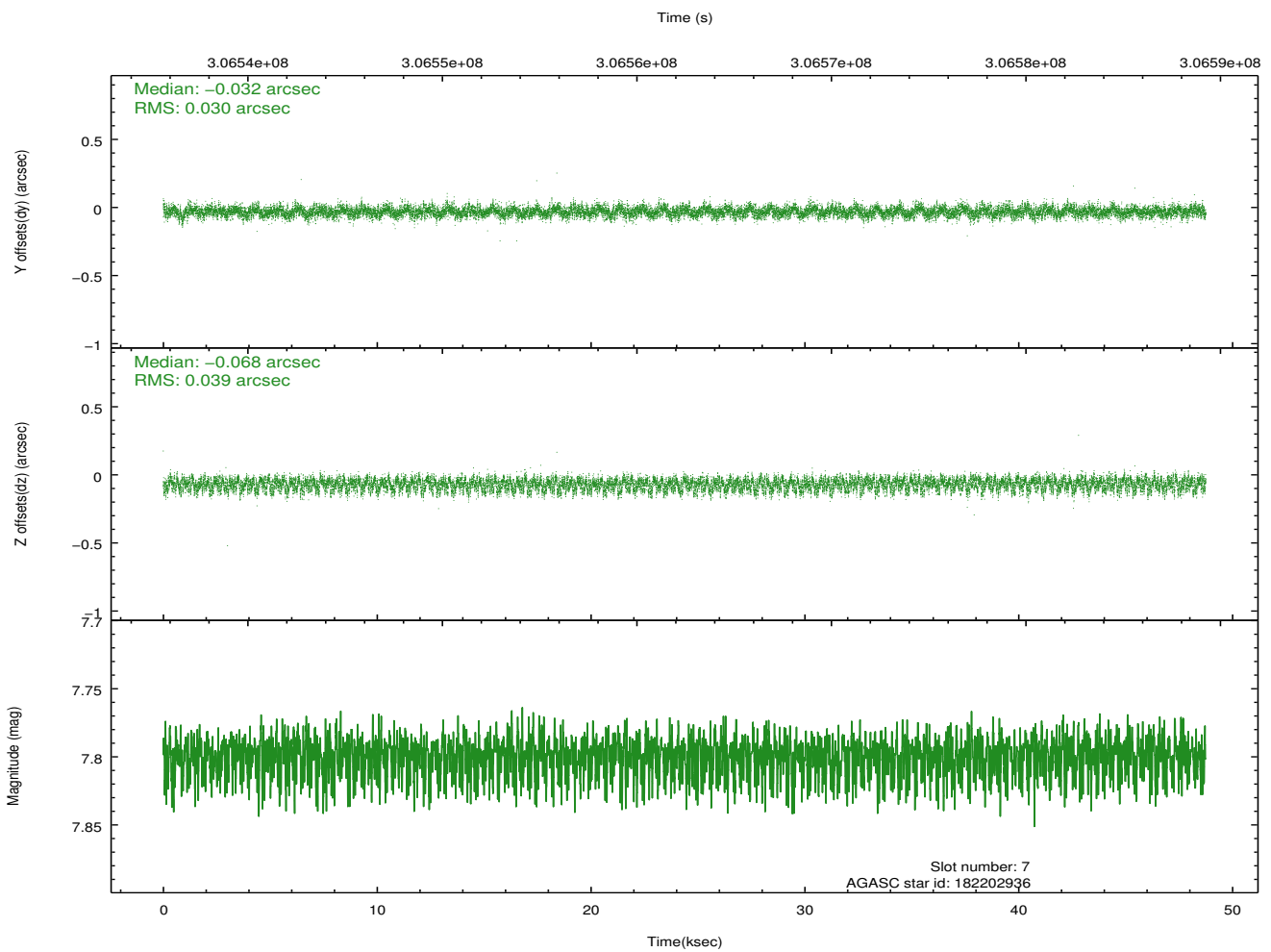
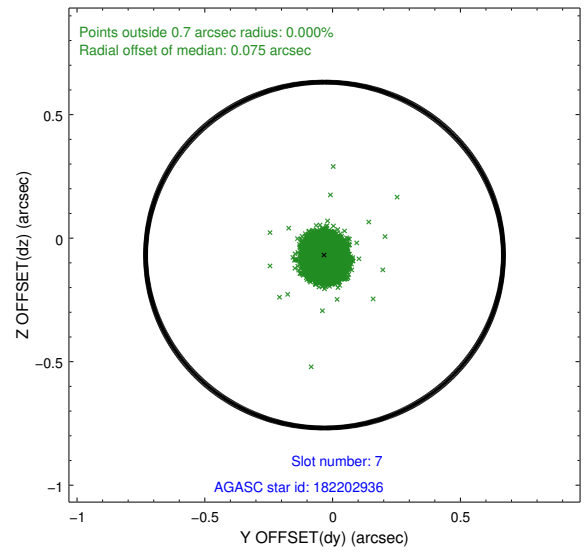
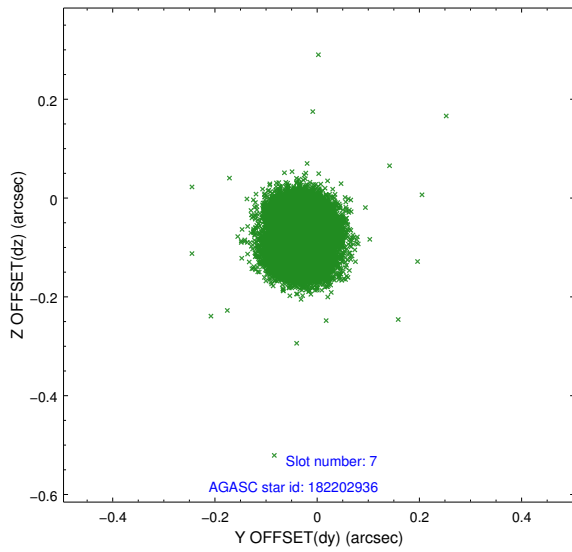
2.4.3 Slot 5



2.4.4 Slot 6

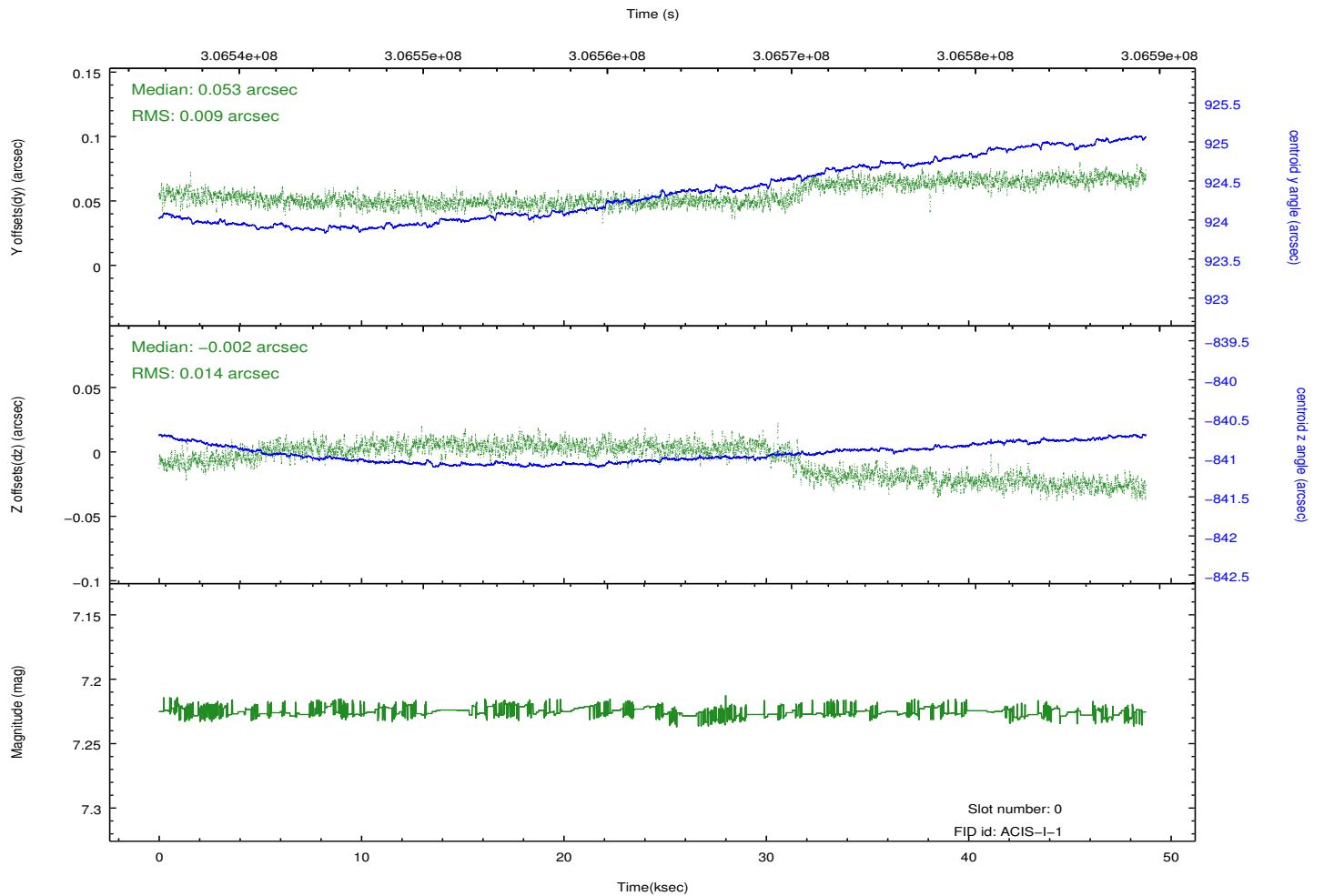
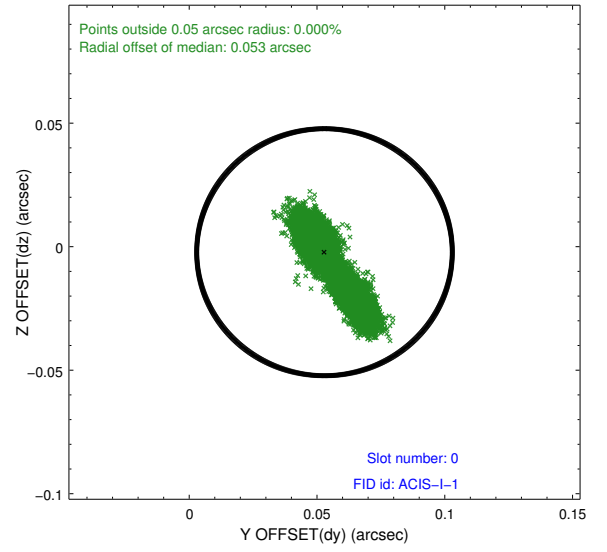
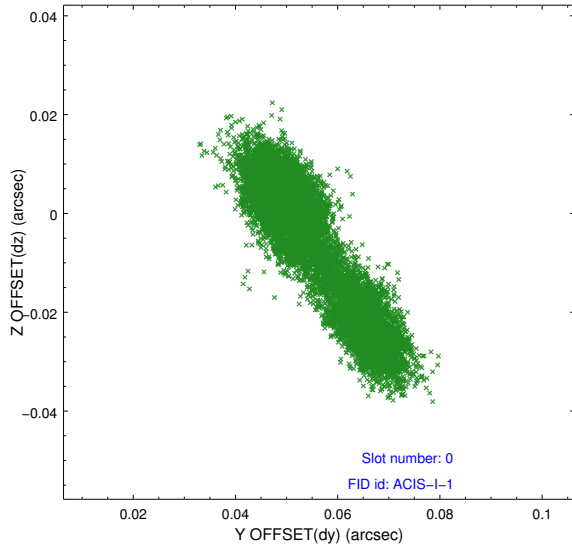


2.4.5 Slot 7

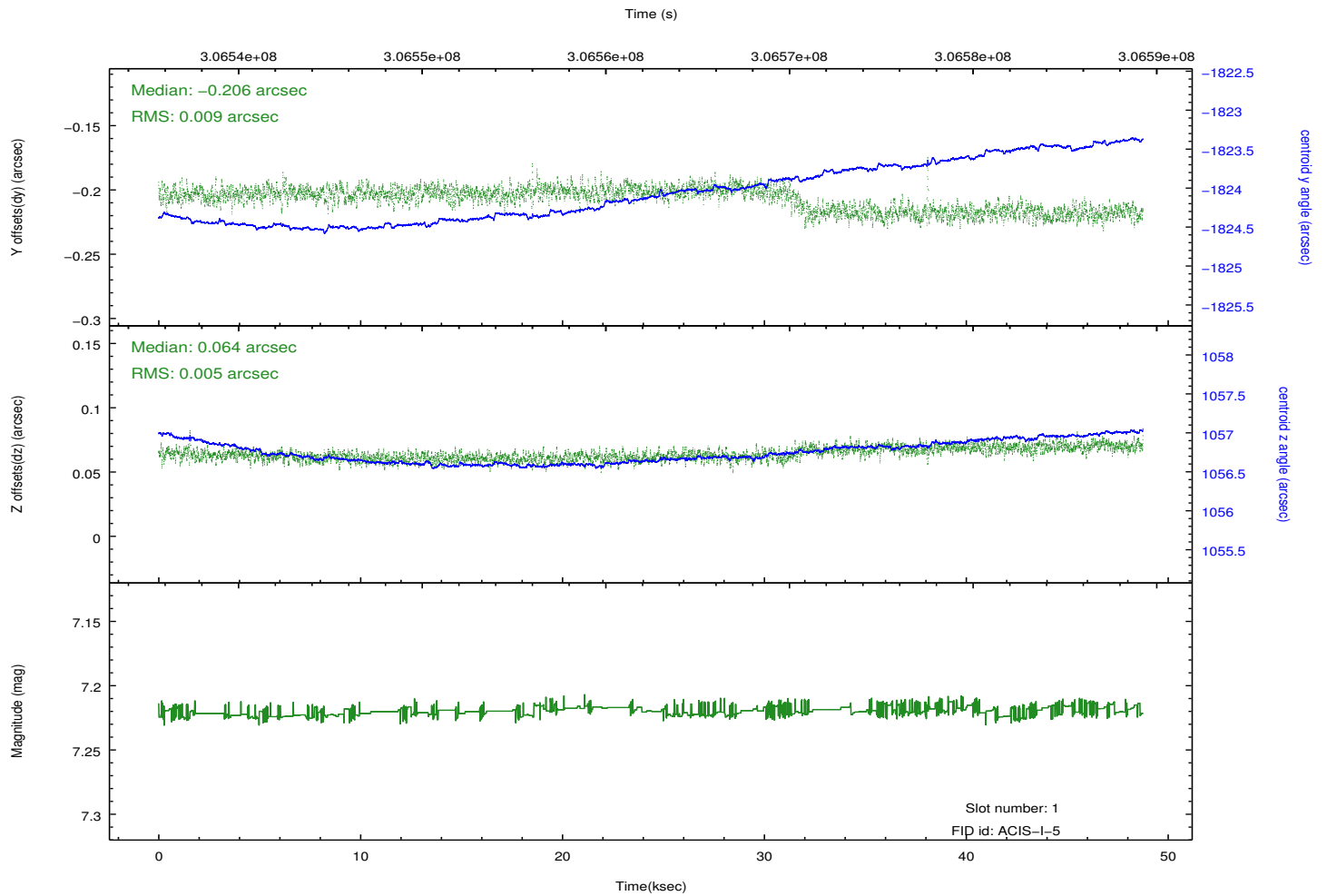
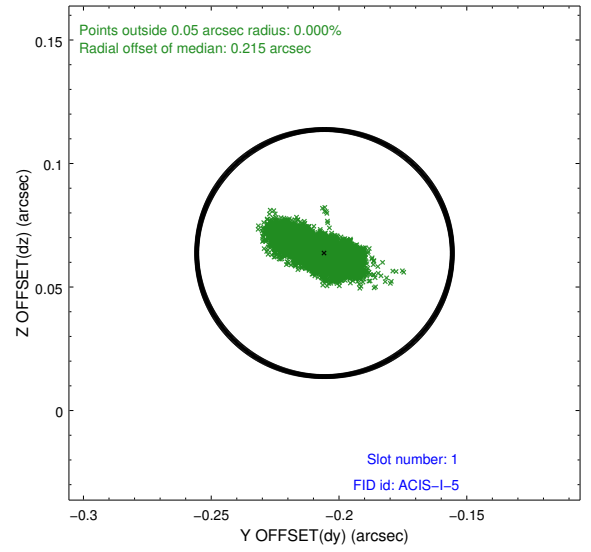
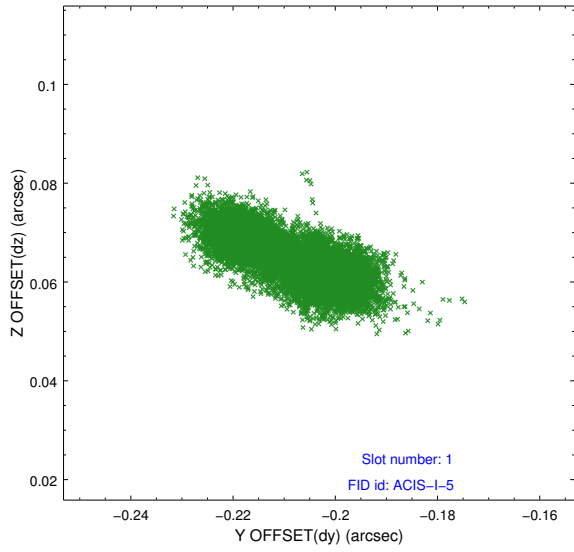


2.5 FID Slots

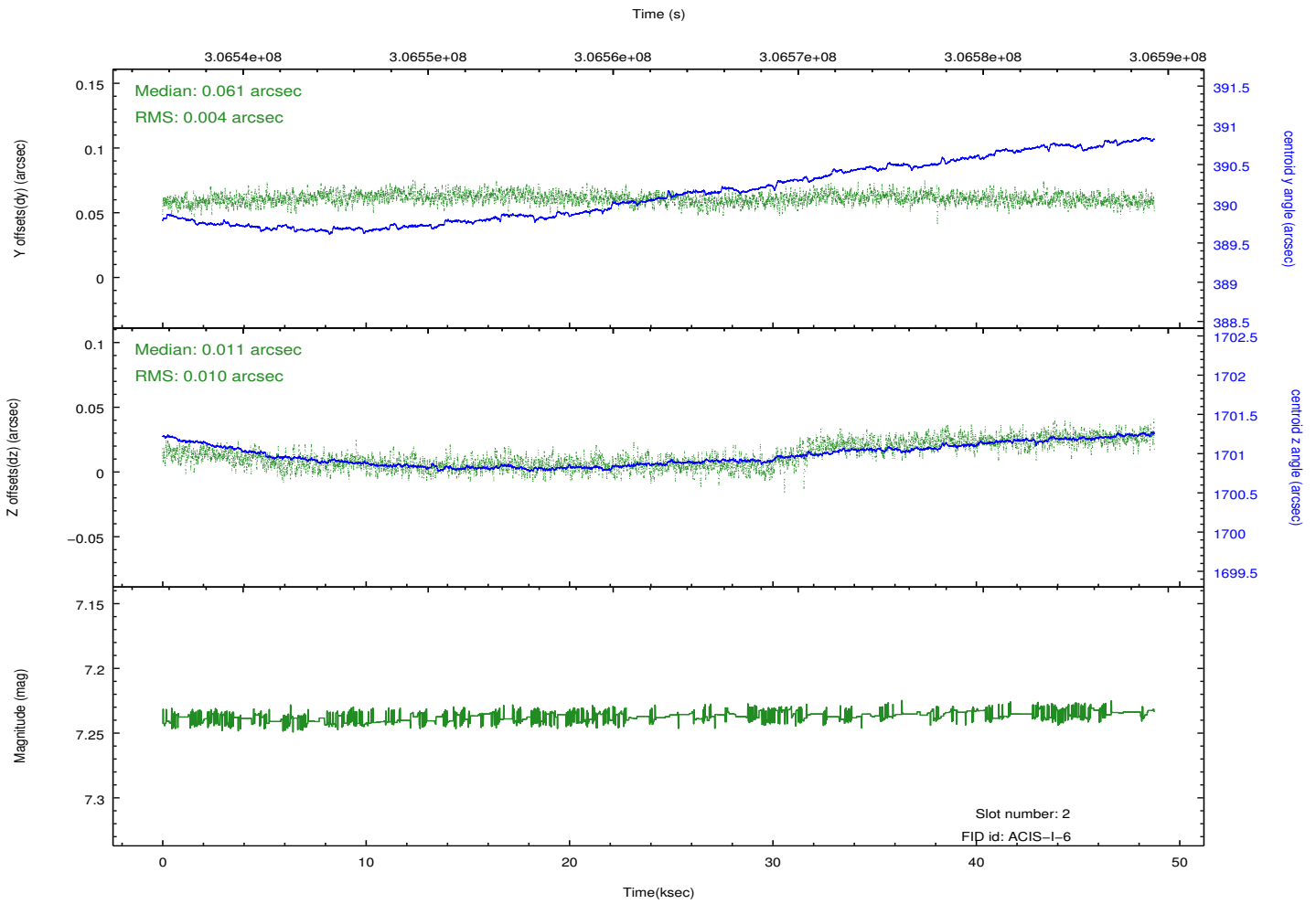
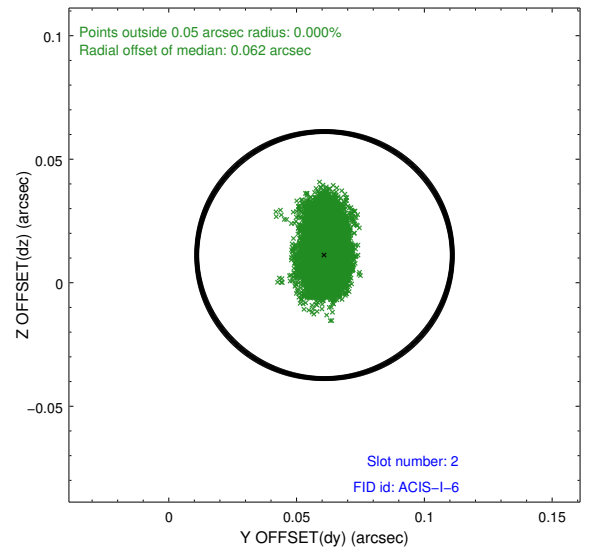
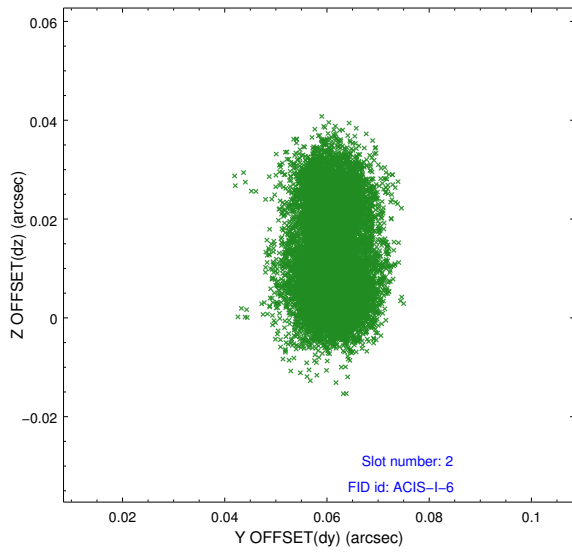
2.5.1 Slot 0



2.5.2 Slot 1



2.5.3 Slot 2



A Summary

A.1 Status

V&V Scientist	Jen Lauer
V&V Date (YYYY-MM-DD)	2012.05.03
V&V Edition	1
V&V Disposition and Status	OK
V&V Charge Time	48.7474184

A.2 Comments