

V&V Reference Report

L2 ASCDS Version : 8.4.4

Observation 8015 - L2 Version 3
Chandra X-Ray Center

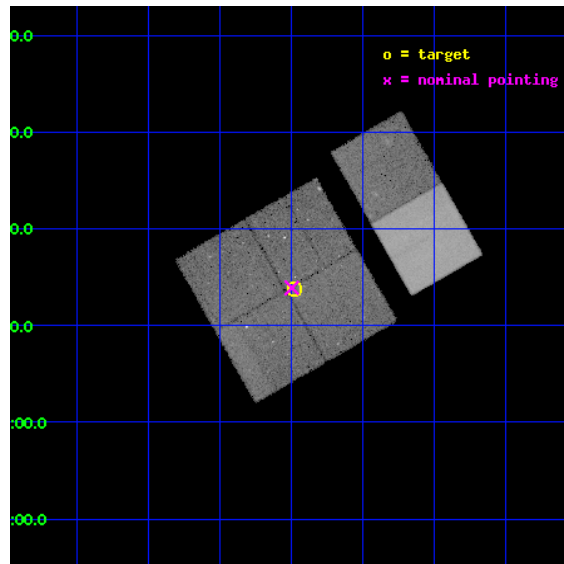
L2 Processing Date : Apr 17 2012

Contents

1	Front	2
2	OBI	3
2.1	OBI	3
2.1.1	Images	3
2.1.2	Bias	3
2.1.3	Parameters	4
2.1.4	Events	4
2.2	Compared Parameters	5
2.3	Aspect	6
2.4	Star Slots	9
2.4.1	Slot 3	9
2.4.2	Slot 4	10
2.4.3	Slot 5	11
2.4.4	Slot 6	12
2.4.5	Slot 7	13
2.5	FID Slots	14
2.5.1	Slot 0	14
2.5.2	Slot 1	15
2.5.3	Slot 2	16
A	Summary	17
A.1	Status	17
A.2	Comments	17

1 Front

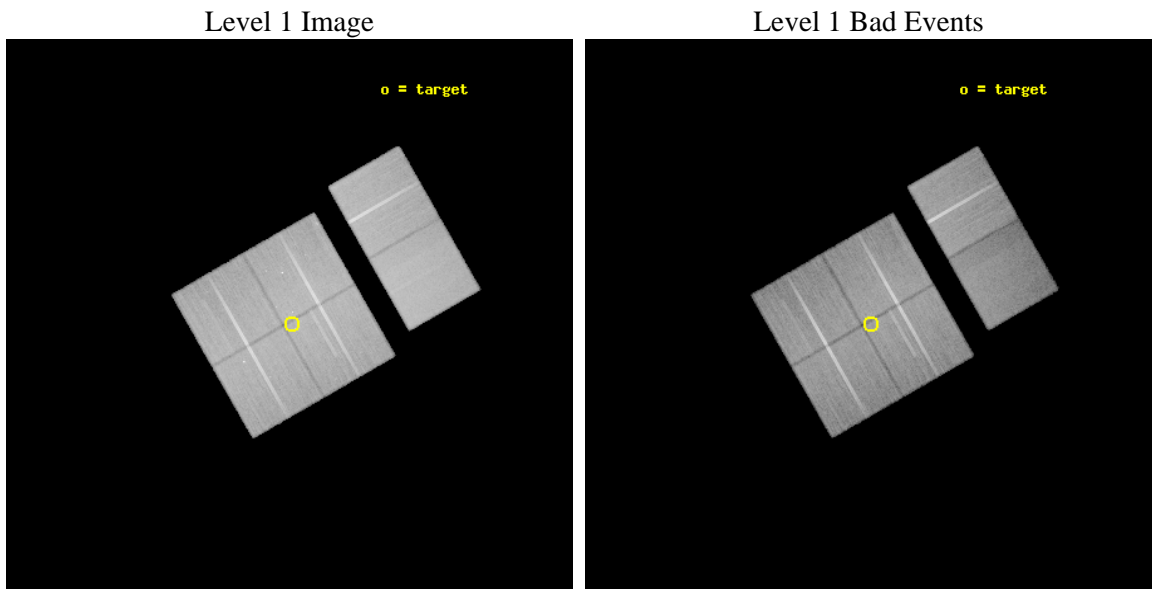
seq_num	900559	Sequence number
obs_id	8015	Observation id
title	THE CHANDRA-COSMOS SURVEY	Proposal title
observer	Dr. Martin Elvis	Principal investigator
object	C-COSMOS4-6	Source name
dtcycle	0	
cycle	P	events from which exps? Prim/Second/Both
ra_targ	149.745217	Observer's specified target RA [deg]
dec_targ	2.228728	Observer's specified target Dec [deg]
ra_nom	149.74890326832	Nominal RA [deg]
dec_nom	2.2316432418667	Nominal Dec [deg]
roll_nom	60.217825680677	Nominal Roll [deg]
revision	3	Processing version of data
ontime	46063.958828151	Sum of GTIs [s]
livetime	45480.669245083	Livetime [s]
ontime0	46057.47679776	Sum of GTIs [s]
ontime1	46067.199828446	Sum of GTIs [s]
ontime2	46067.199828446	Sum of GTIs [s]
ontime3	46063.958828151	Sum of GTIs [s]
ontime6	46067.199828446	Sum of GTIs [s]
ontime7	46067.199828446	Sum of GTIs [s]
l2events	317090	Number of level 2 events



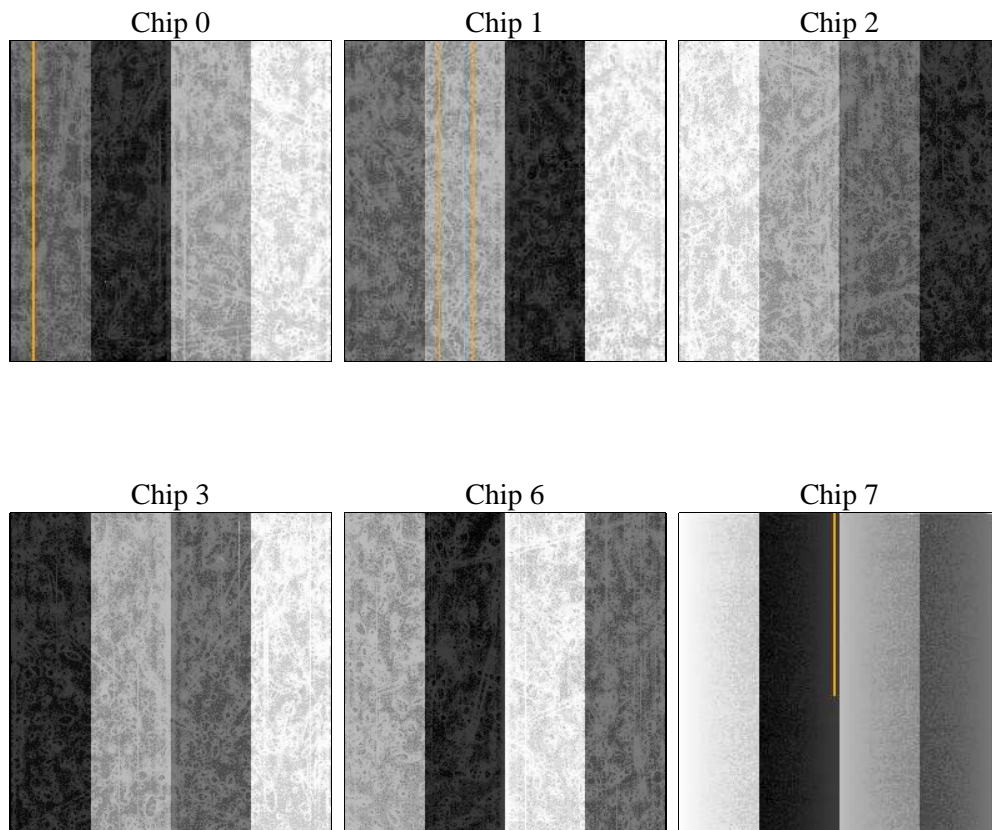
2 OBI

2.1 OBI

2.1.1 Images



2.1.2 Bias



2.1.3 Parameters

obi_num	1	Obi number	sched_exp_time	46000.000000	[s] Scheduled observation exposure time
ascdsver	8.4.4	Processing system revision	ontime	46063.958828151	Sum of GTIs [s]
caldbver	4.4.9	 	ontime0	46057.47679776	Sum of GTIs [s]
date	2012-04-17T23:30:53	Date and time of file creation	ontime1	46067.199828446	Sum of GTIs [s]
revision	3	Processing version of data	ontime2	46067.199828446	Sum of GTIs [s]
			ontime3	46063.958828151	Sum of GTIs [s]
			ontime6	46067.199828446	Sum of GTIs [s]
			ontime7	46067.199828446	Sum of GTIs [s]
			l1events	2110856	Number of level 1 events

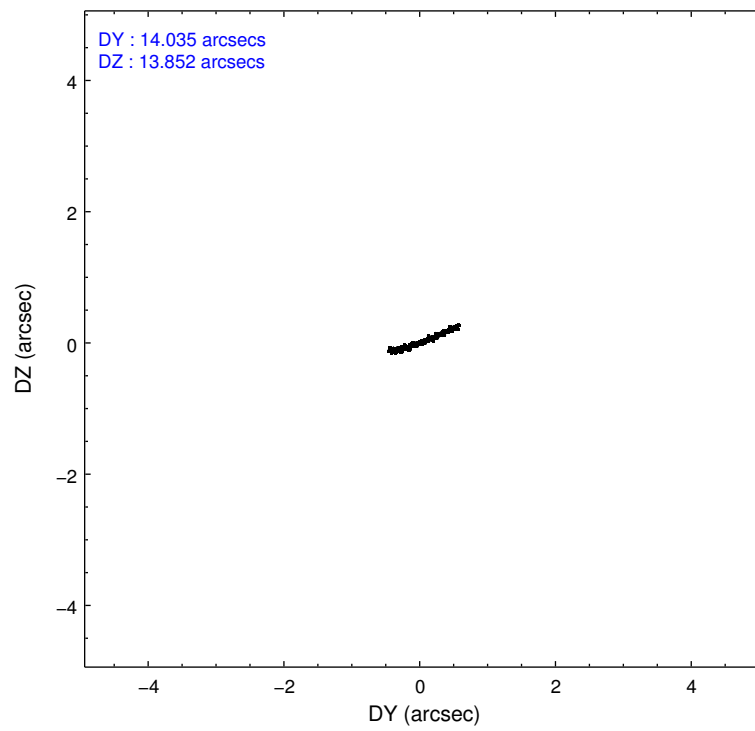
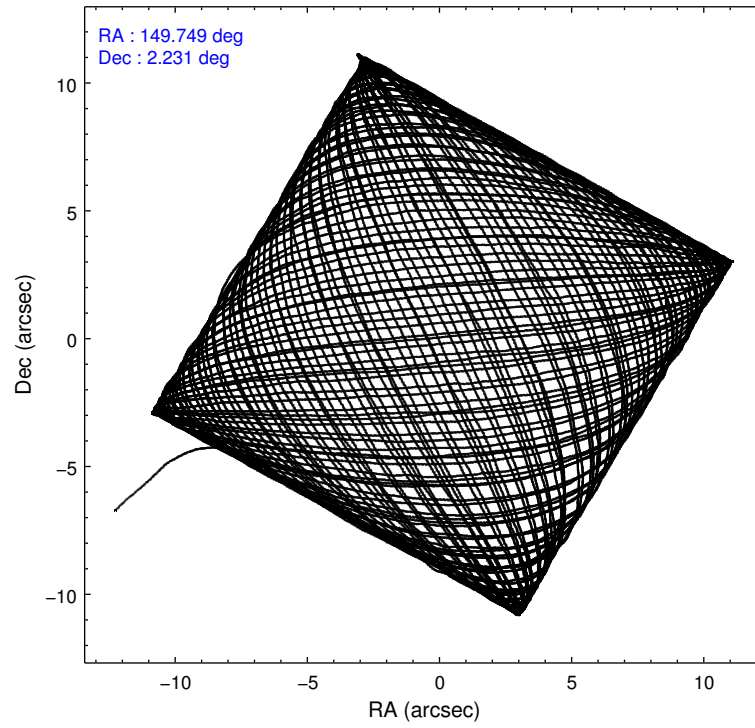
2.1.4 Events

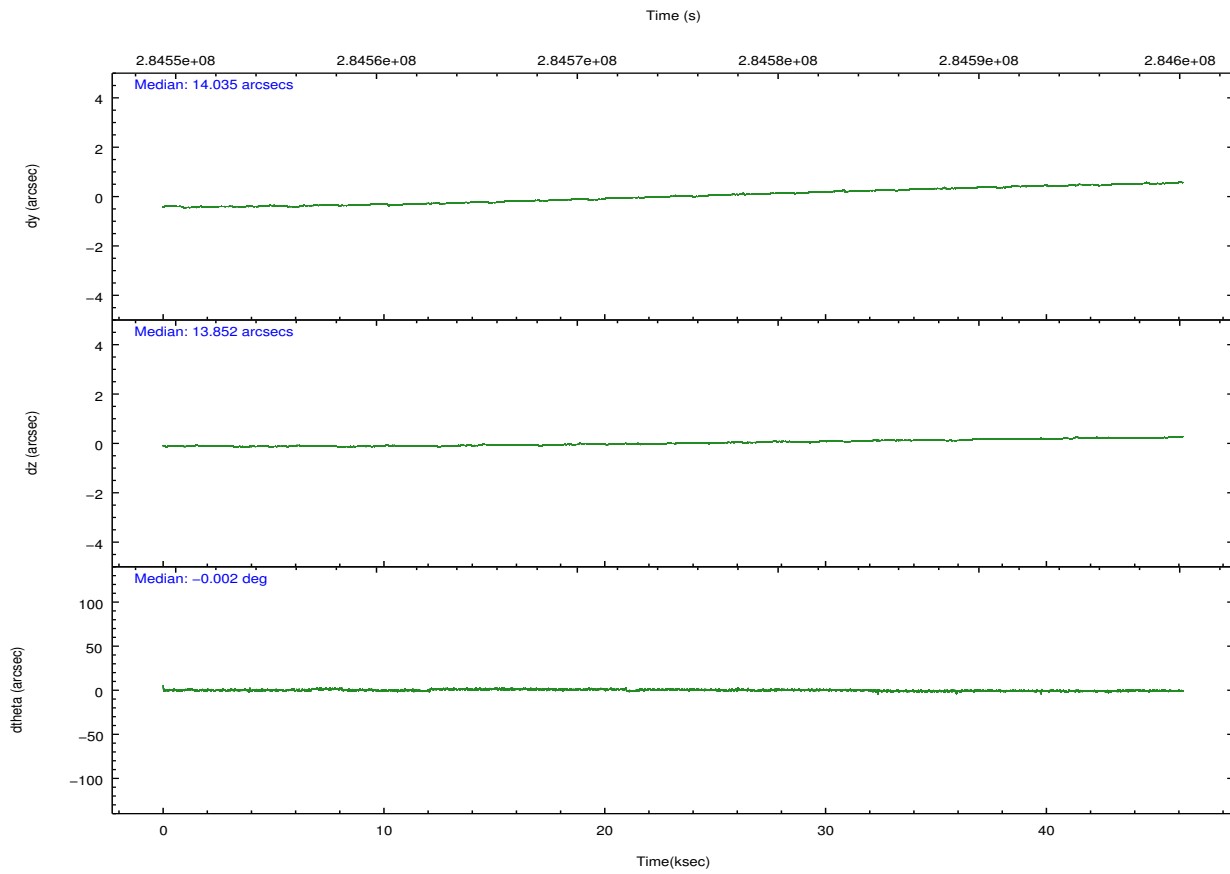
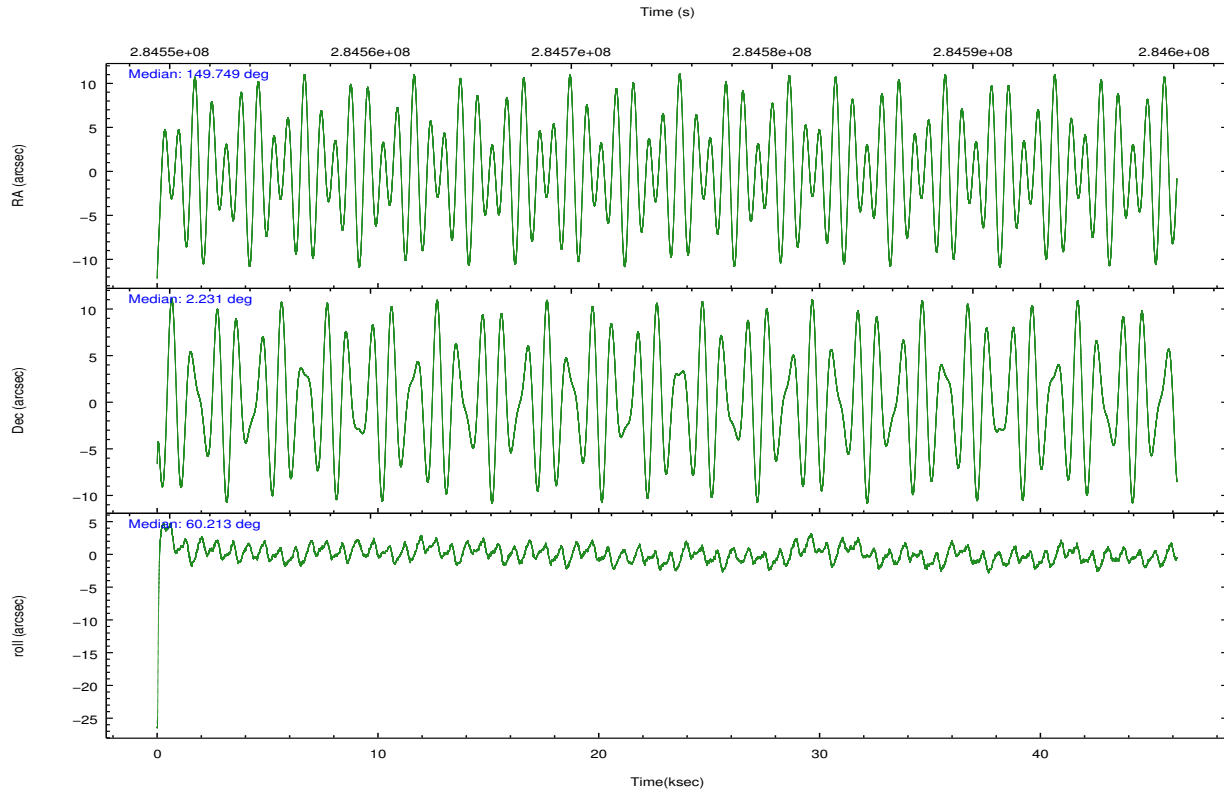
	ccd 0	ccd 1	ccd 2	ccd 3	ccd 6	ccd 7		ccd 0	ccd 1	ccd 2	ccd 3	ccd 6	ccd 7
level 1 events	323420	326265	365446	345506	366284	383935	grade 0 events	11472	14178	13929	12117	12526	16139
rejected events	290010	287382	329828	312498	330177	209835		3%	4%	3%	3%	3%	4%
rejected %	89%	88%	90%	90%	90%	54%	grade 1 events	162	190	214	194	178	454
								0%	0%	0%	0%	0%	0%
							grade 2 events	7935	8472	8021	7012	8095	35022
								2%	2%	2%	2%	2%	9%
							grade 3 events	3726	4199	3657	3658	3955	16073
								1%	1%	1%	1%	1%	4%
							grade 4 events	3605	4188	3807	3673	3810	15881
								1%	1%	1%	1%	1%	4%
							grade 5 events	11593	13143	11127	13808	14193	40428
								3%	4%	3%	3%	3%	10%
							grade 6 events	6674	7850	6217	6556	7727	91013
								2%	2%	1%	1%	2%	23%
							grade 7 events	278253	274045	318474	298488	315800	168925
								86%	83%	87%	86%	86%	43%

2.2 Compared Parameters

Parameter	Planned	Actual	Parameter	Planned	Actual
Instrument	ACIS	ACIS	Obspar format version number	7	7
Detector	ACIS-012367	ACIS-012367	Obspar file type	PREDICTED	ACTUAL
Grating	NONE	NONE	Obspar update status	NONE	UPDATED
Data mode	VFAINT	VFAINT	CCD I0 on	Y	Y
Observation mode	POINTING	POINTING	CCD I1 on	Y	Y
[deg] Pointing RA	149.749129	149.7489032683173	CCD I2 on	Y	Y
[deg] Pointing Dec	2.204153	2.231643241866738	CCD I3 on	Y	Y
[deg] Pointing Roll	60.009142	60.21782568067658	CCD S0 on	N	N
[mm] SIM focus pos	-0.782348	-0.7809083437167272	CCD S1 on	N	N
[mm] SIM defocus	0	0.001439871863259334	CCD S2 on	O1	Y
[mm] SIM translation stage pos	-233.592463	-233.5874344608287	CCD S3 on	O2	Y
[mm] SIM translation stage offset	0	-0.005018542100998502	CCD S4 on	N	N
[s] Observation start time (MET)	284551864.184000	284550845.23134	CCD S5 on	N	N
Observation start date	2007-01-07T10:09:59	2007-01-07T09:54:05	Number of optional ACIS chips dropped	0	0
[s] Observation end time (MET)	284597864.184000	284598560.5211	On-chip summing requested	N	N
Observation end date	2007-01-07T22:56:39	2007-01-07T23:09:20	Subarray requested	NONE	NONE
Read mode	TIMED	TIMED	Alternating exposures requested	N	N
			[s] Primary exposure time	0.000000	3.2

2.3 Aspect



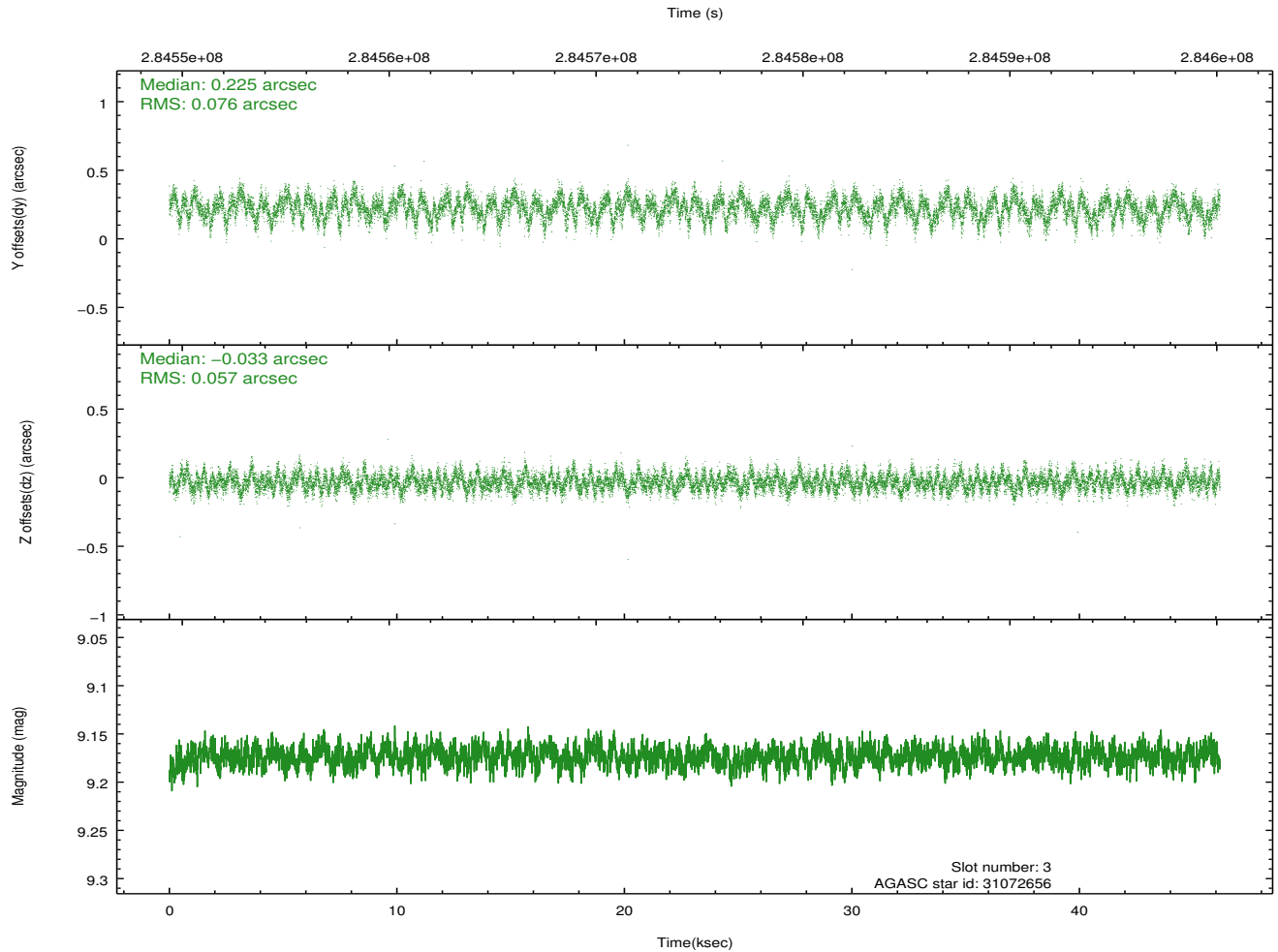
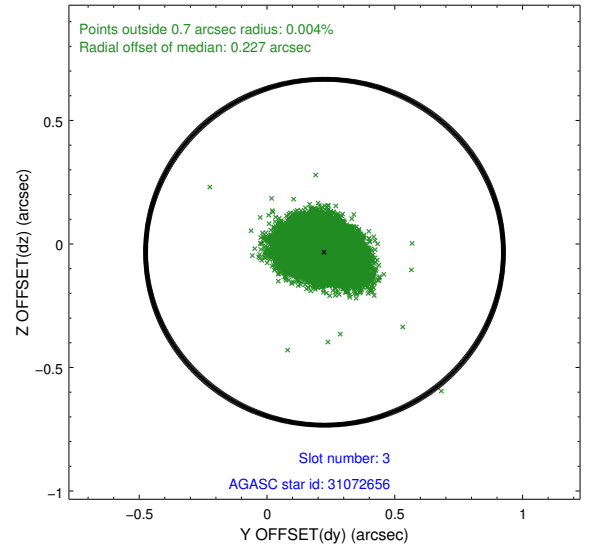
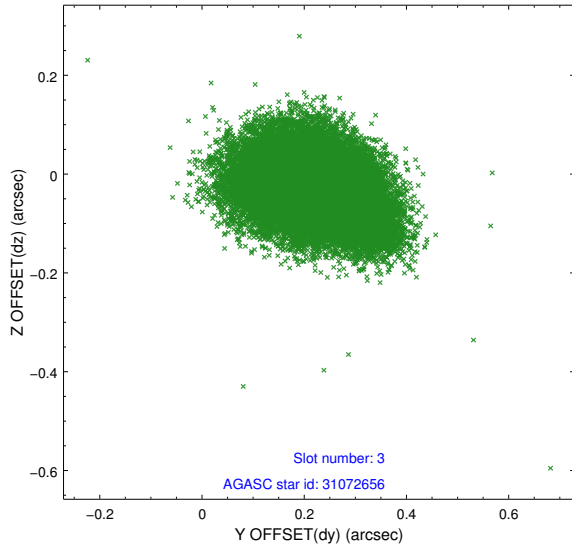


Slot Statistics

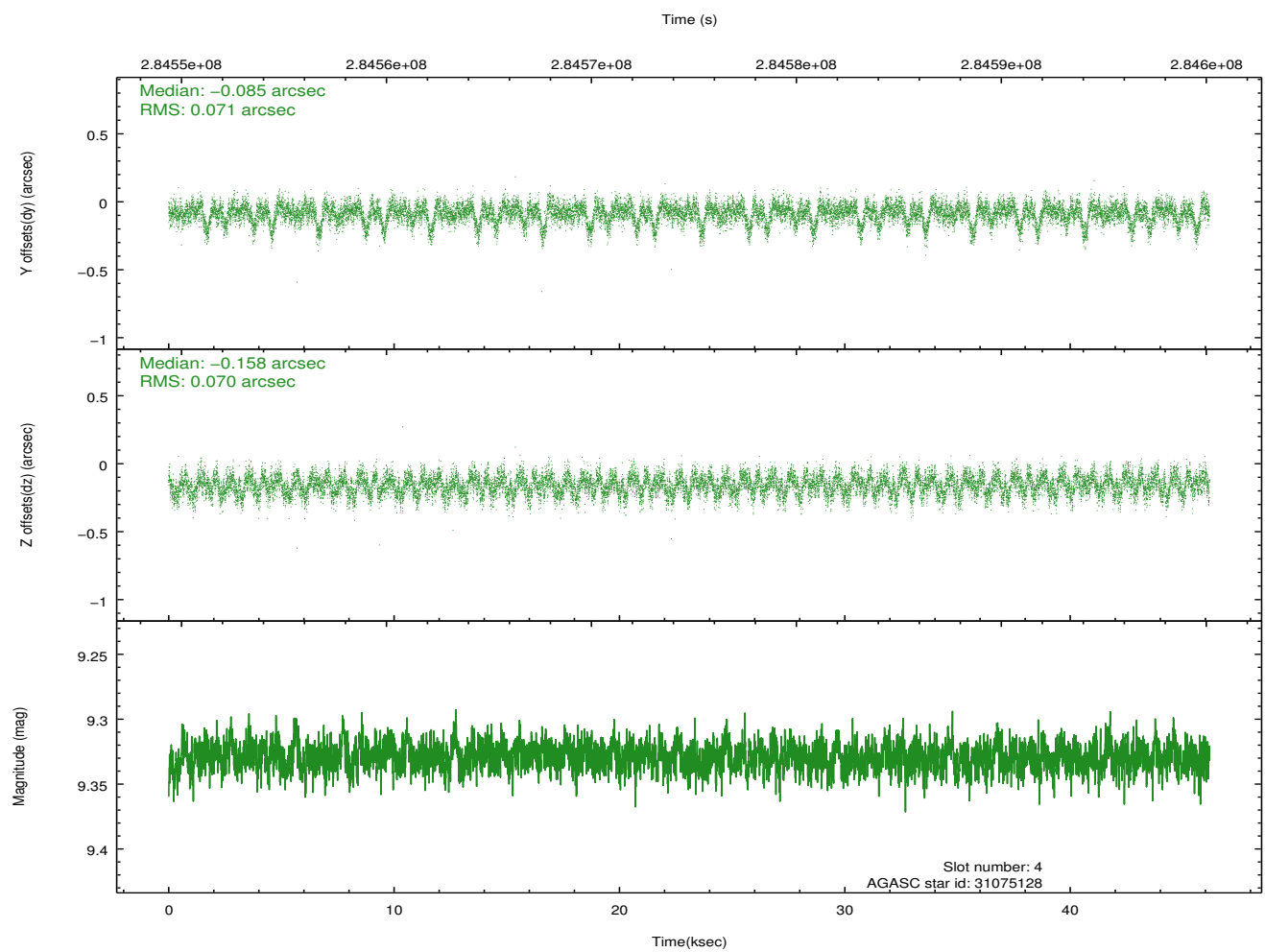
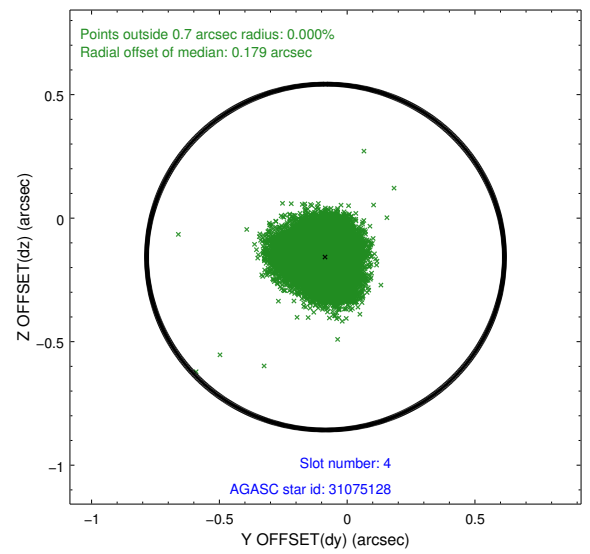
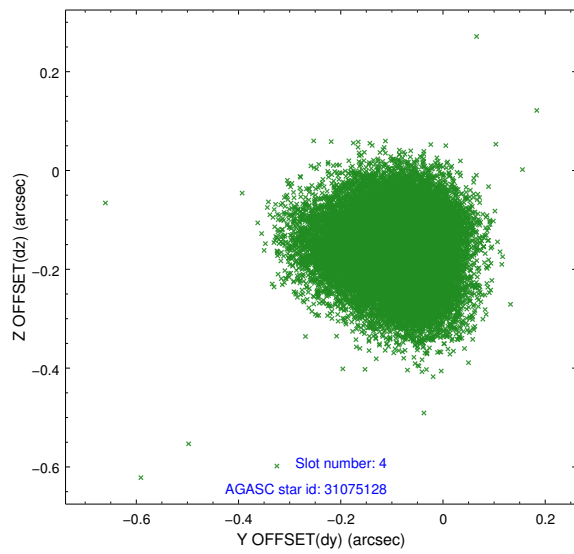
slot	status	id	mag	n_pts	med_dy	med_dz	dr1	dr2	ra	dec	mean_y	mean_z
0	FID	ACIS-I-1	7.24	11264	-0.003	0.017	0.013	0.020	0.000000	0.000000	925.43	-837.43
1	FID	ACIS-I-4	7.17	11261	0.211	0.013	0.015	0.022	0.000000	0.000000	2145.69	1062.37
2	FID	ACIS-I-5	7.22	11264	-0.305	0.040	0.009	0.016	0.000000	0.000000	-1822.87	1060.26
3	GUIDE	31072656	9.17	22513	0.225	-0.033	0.101	0.165	149.313368	1.815013	-1996.36	657.68
4	GUIDE	31075128	9.33	22505	-0.085	-0.158	0.106	0.171	149.584516	2.364347	203.79	801.15
5	GUIDE	31076560	9.65	22496	0.115	0.074	0.137	0.216	149.884782	2.009277	-363.15	-773.39
6	GUIDE	31983336	8.60	22515	-0.024	0.101	0.094	0.148	150.429924	2.291234	1496.78	-1963.72
7	GUIDE	32375384	9.96	22492	-0.223	0.020	0.172	0.275	150.238117	2.622063	2182.64	-770.37

2.4 Star Slots

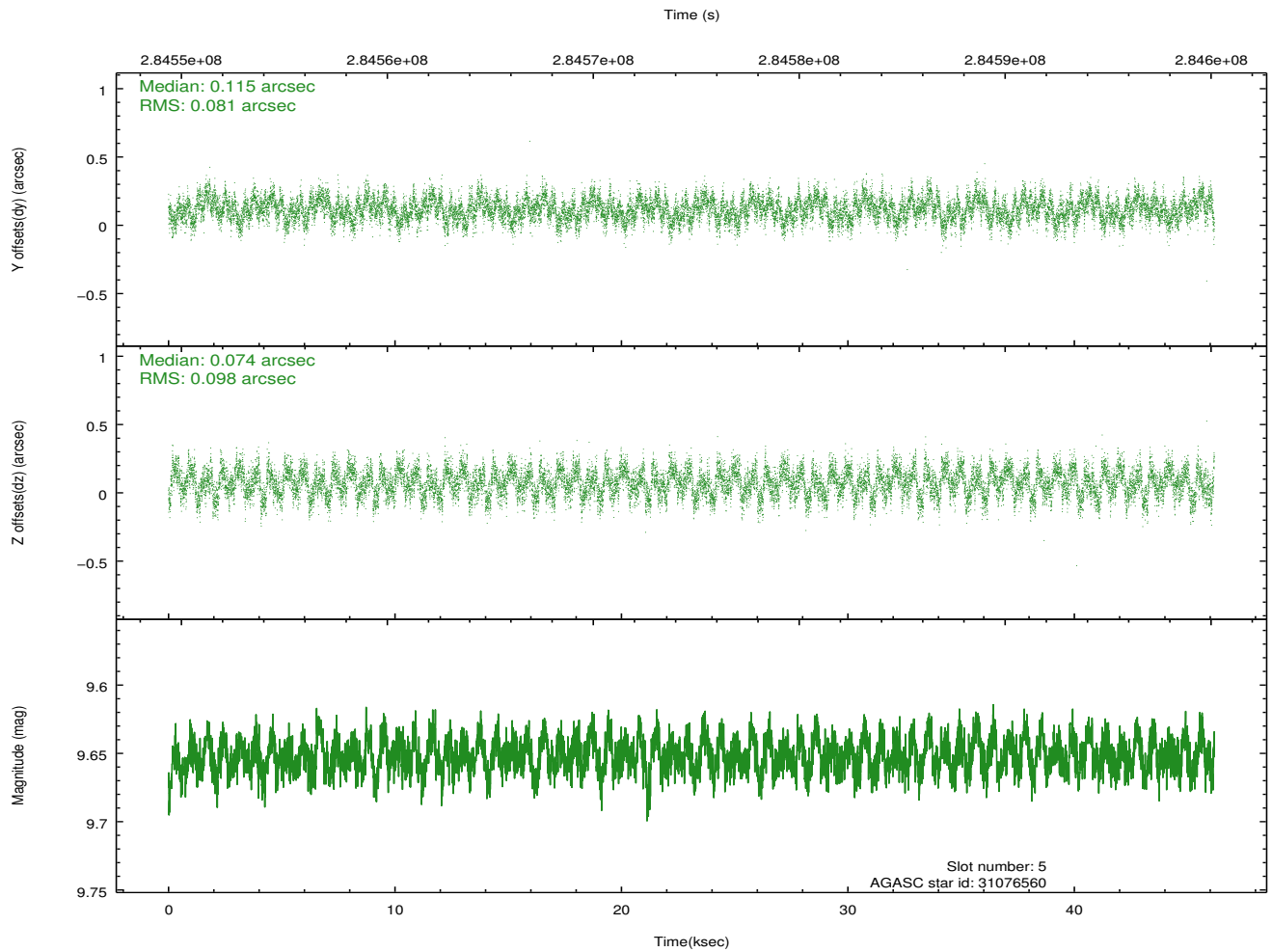
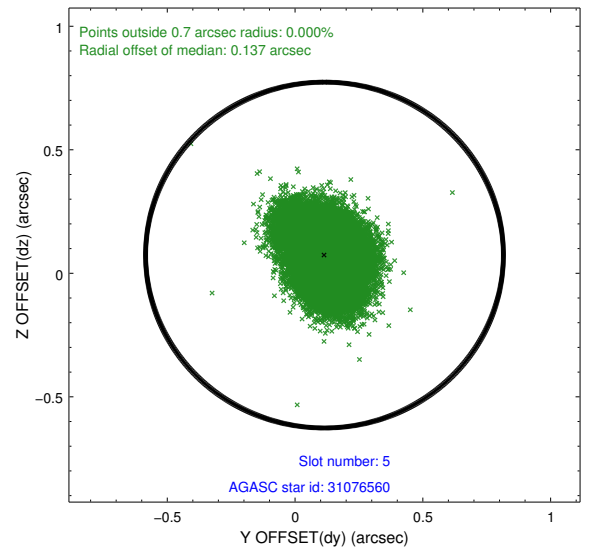
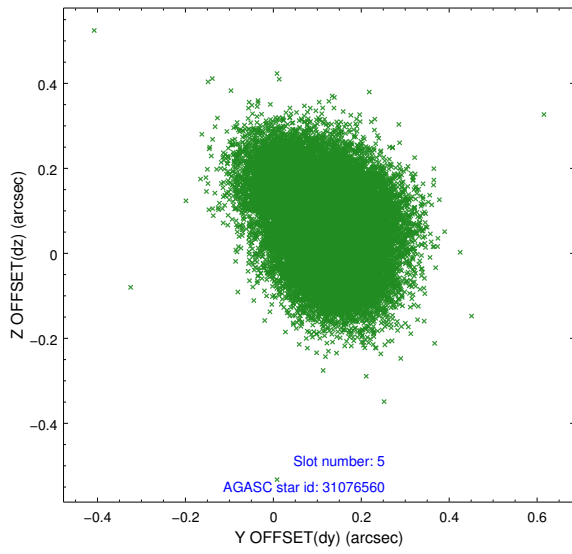
2.4.1 Slot 3



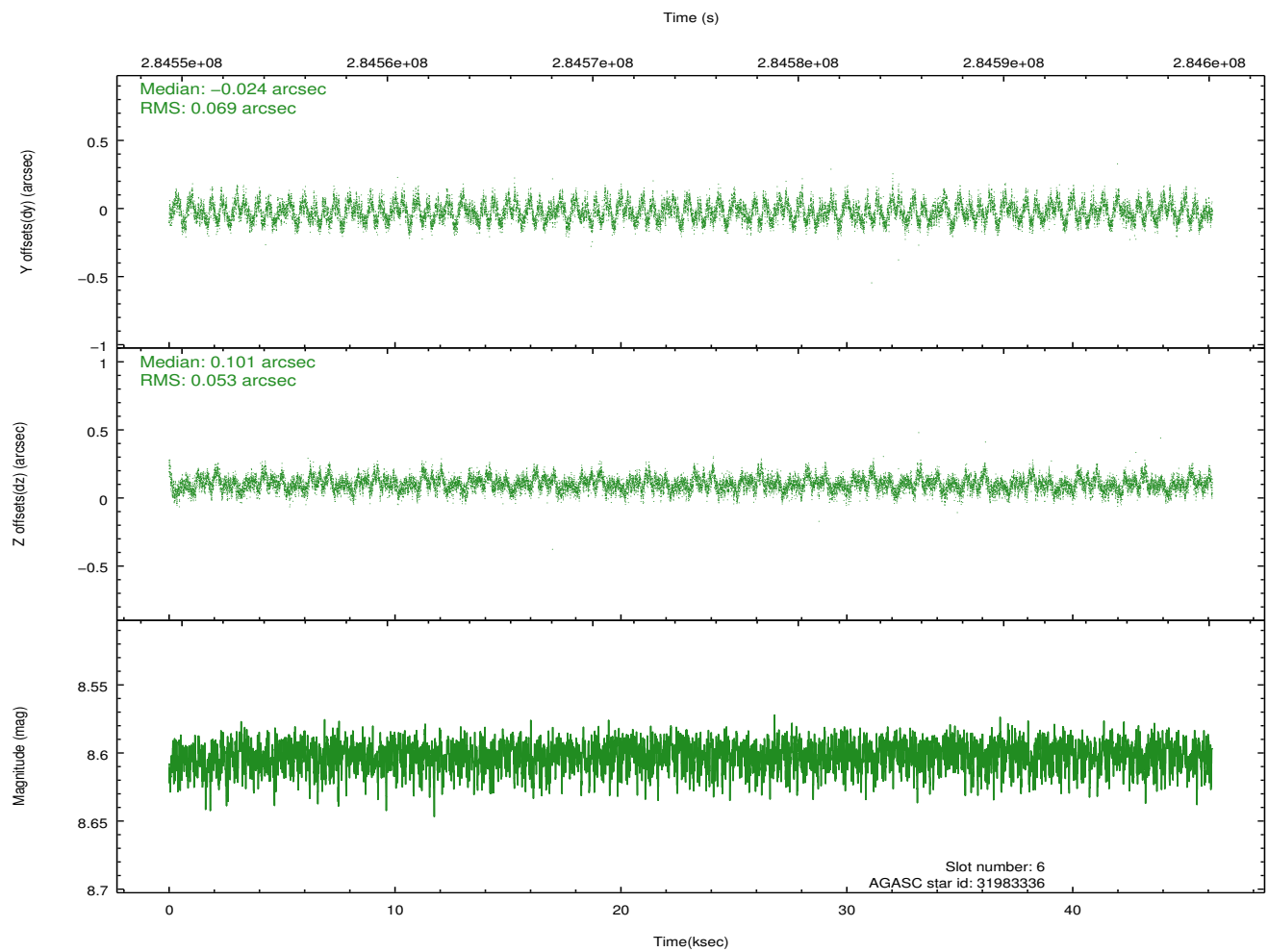
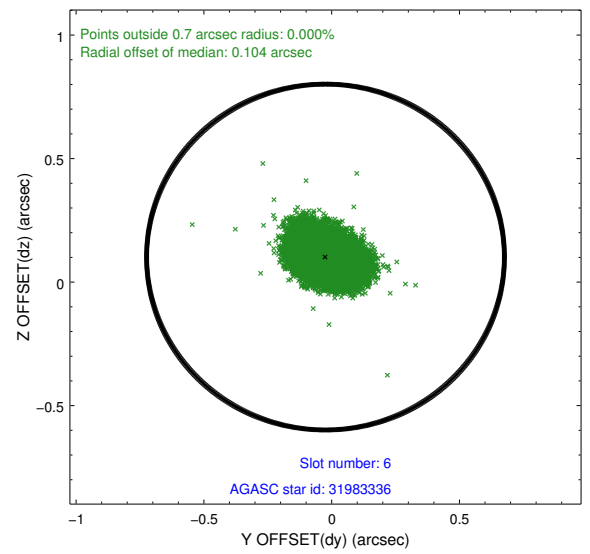
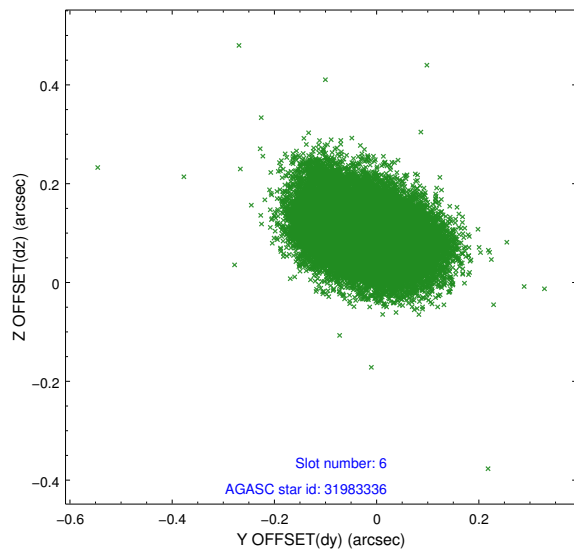
2.4.2 Slot 4



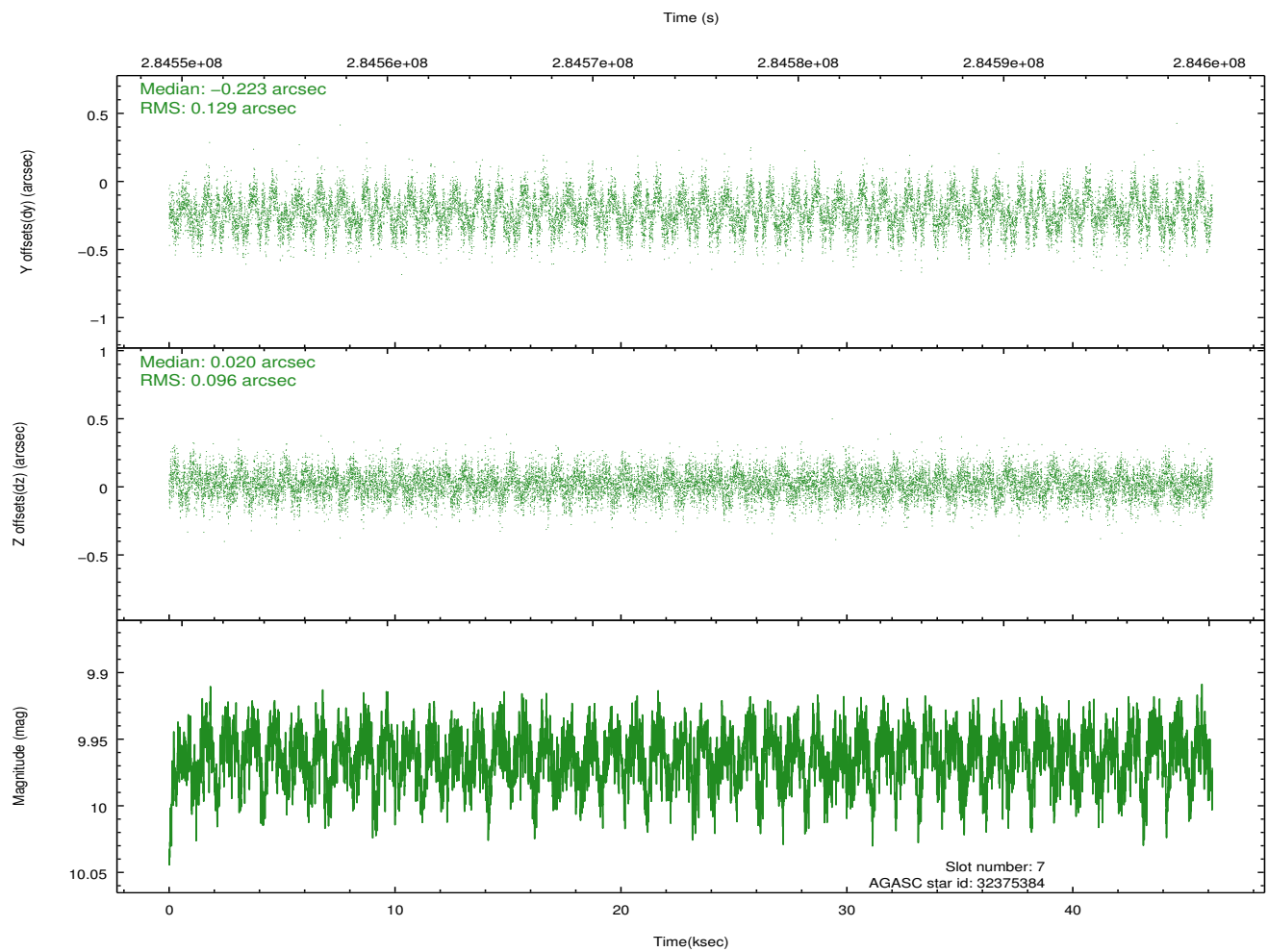
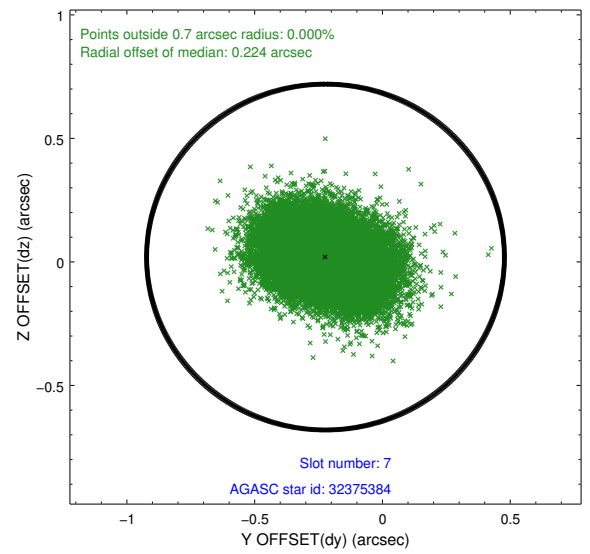
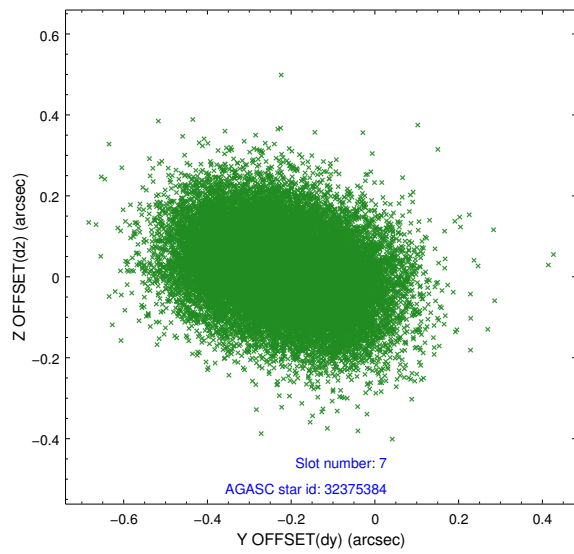
2.4.3 Slot 5



2.4.4 Slot 6

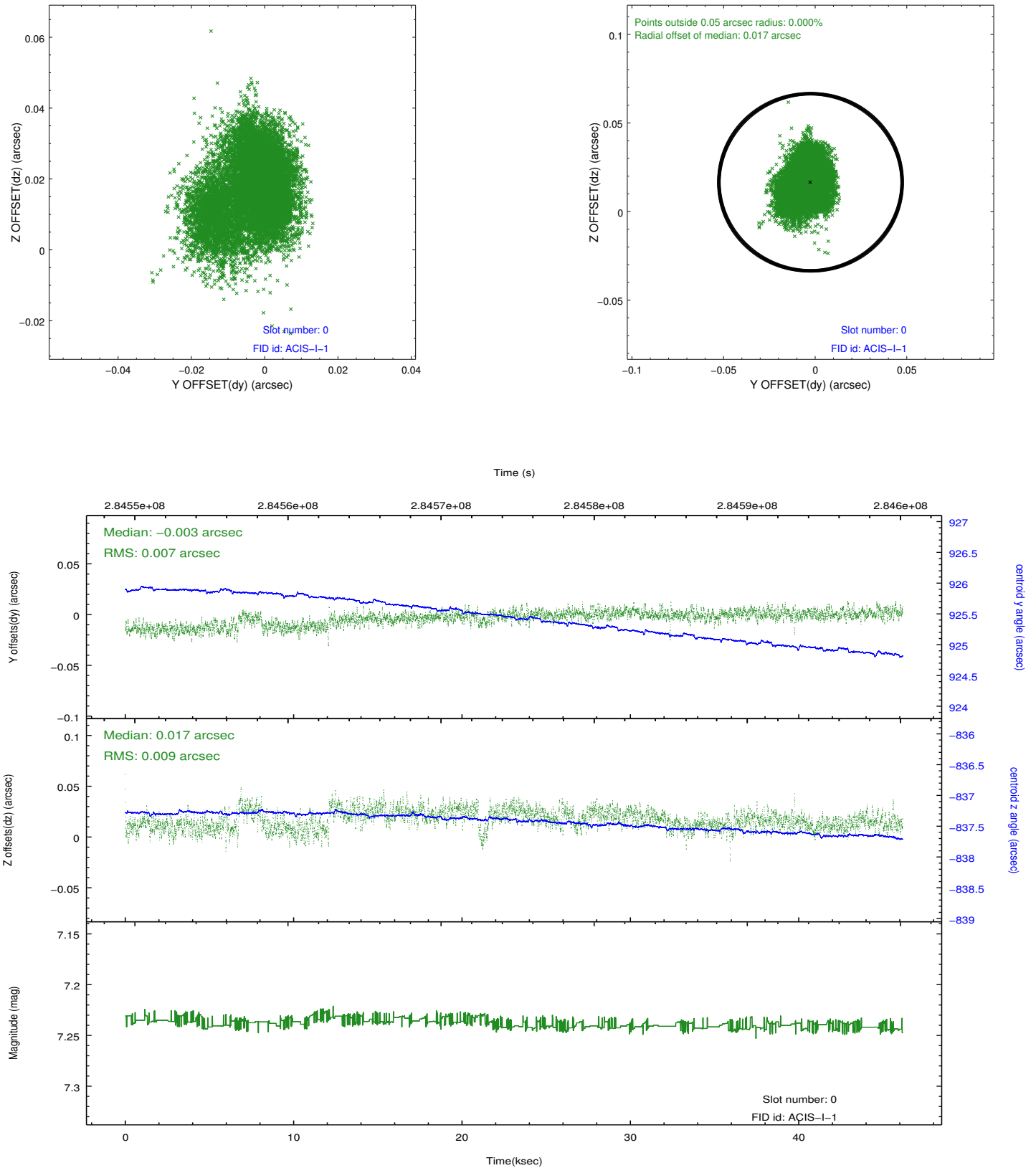


2.4.5 Slot 7

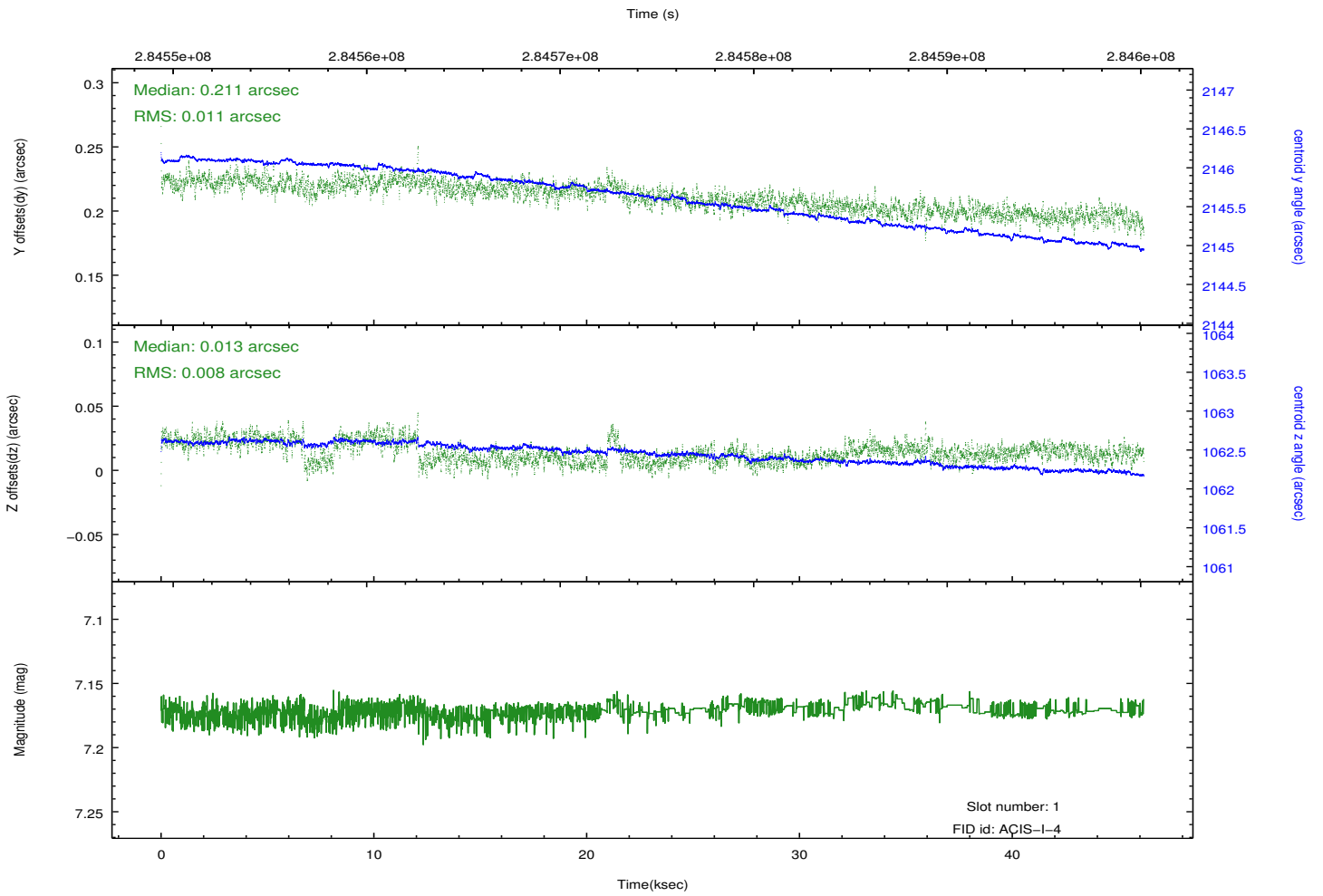
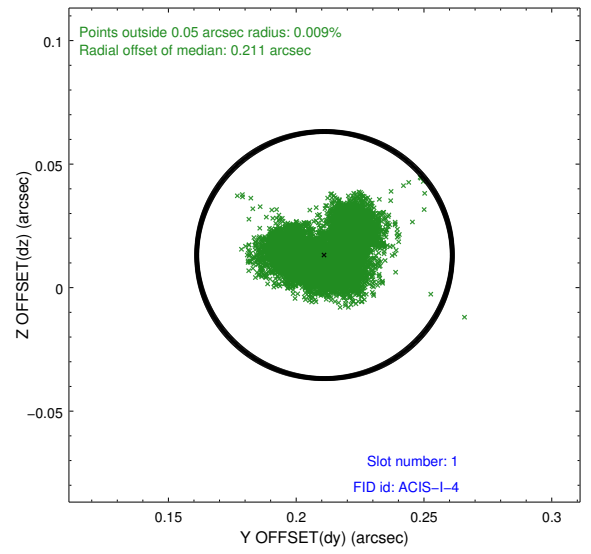
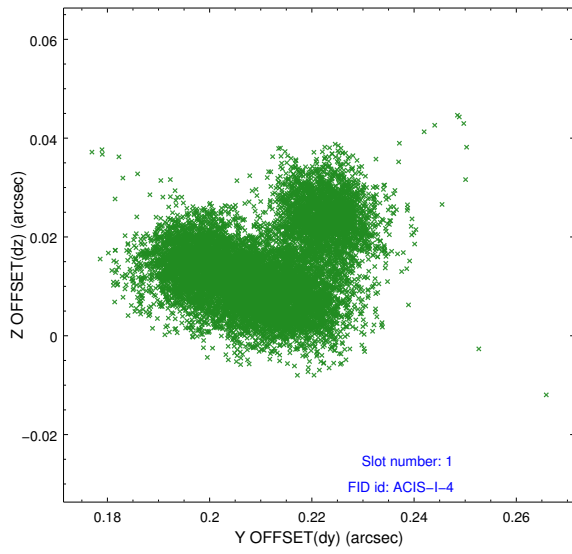


2.5 FID Slots

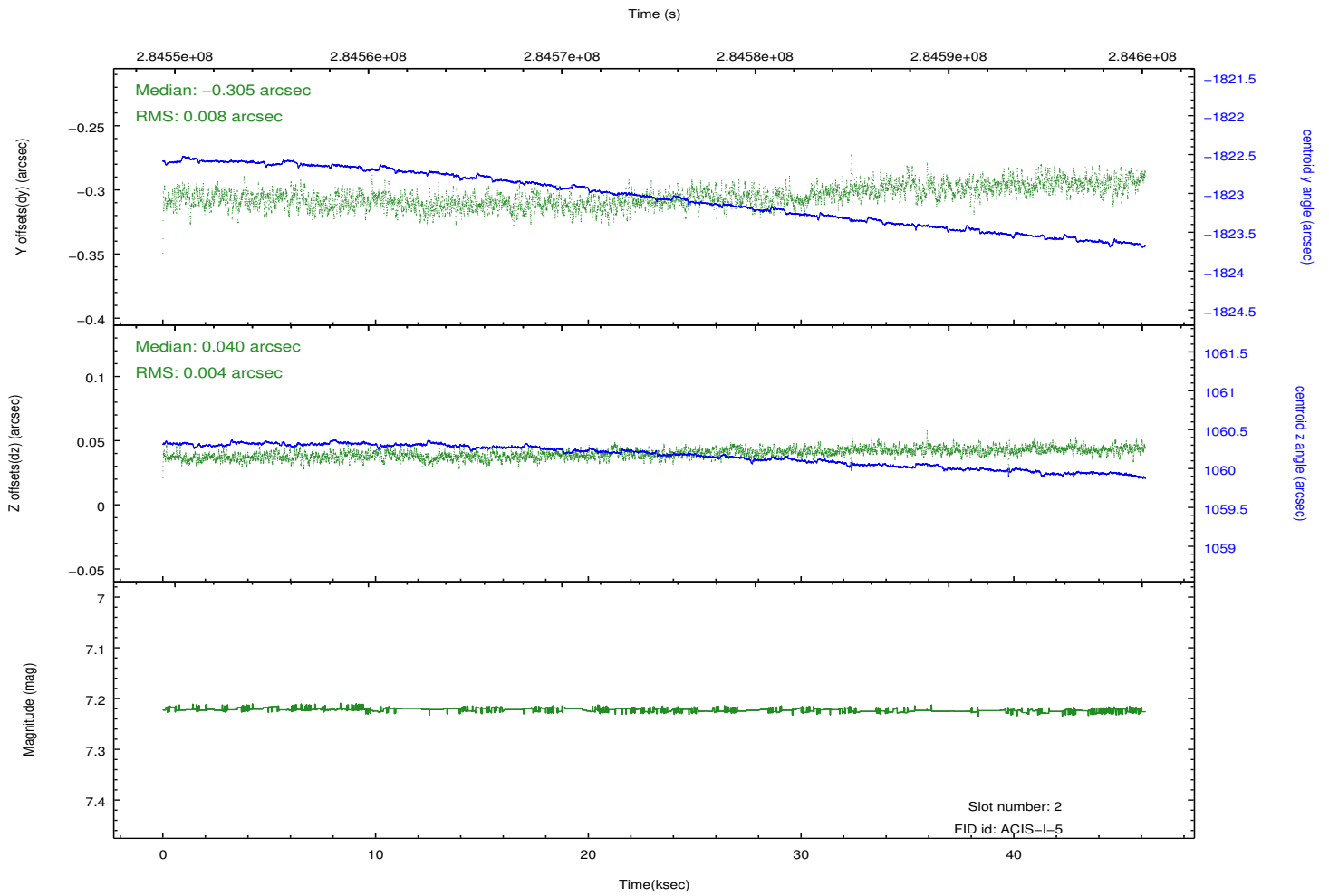
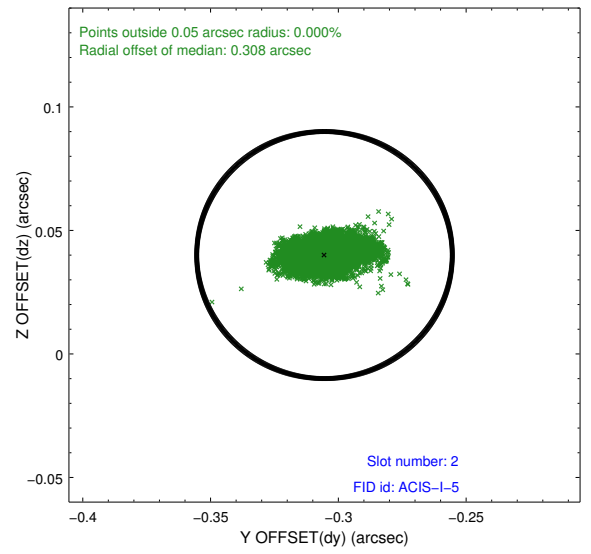
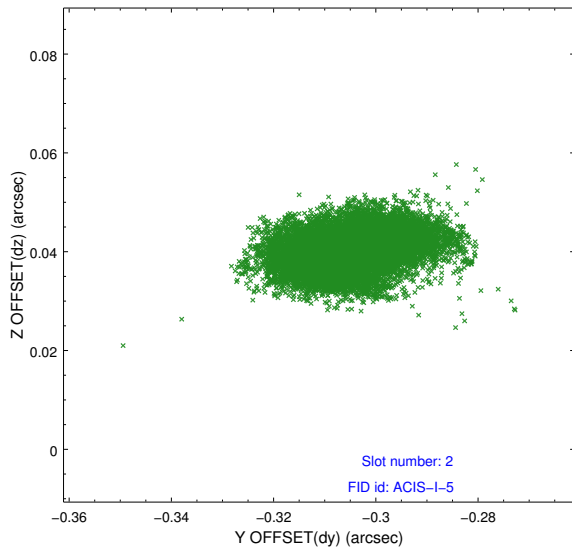
2.5.1 Slot 0



2.5.2 Slot 1



2.5.3 Slot 2



A Summary

A.1 Status

V&V Scientist	Beth Sundheim
V&V Date (YYYY-MM-DD)	2012.04.19
V&V Edition	1
V&V Disposition and Status	OK
V&V Charge Time	46.0639588

A.2 Comments